

Introducing the New RPIJ Measure of Consumer Price Inflation

Derek Bird

Summary

Following a consultation on options for improving the Retail Prices Index (RPI)¹, the National Statistician, Jil Matheson, concluded that one of the formulae used to produce the RPI does not meet international standards and recommended that a new index be published. This article explains the basis for the new index and provides a historical time series in advance of its routine production.

Introduction

The National Statistician's consultation was prompted by the need to address the gap between the estimates produced by the RPI and the Consumer Prices Index (CPI). An ONS research programme found that the use of the arithmetic formulation (known as the 'Carli' index formula) at the lowest level of aggregation in the RPI is the primary source of the formula effect difference between the RPI and the CPI, and that this formulation does not meet current international standards. Therefore, an improved variant of the RPI will be published from March 2013 using a geometric formulation (Jevons), known as RPIJ.

In light of the National Statistician's work programme and the methodological shortcomings now known to be associated with the RPI, the statistics are being re-assessed by the UK Statistics Authority (UKSA) to determine whether or not they merit continued designation as National Statistics.

The production of RPIJ will be subject to the same processes as for RPI to ensure that its quality is maintained. RPIJ will initially be published as an experimental statistic² until its assessment by the UK Statistics Authority is completed in the summer of 2013.

¹ National Statistician's consultation on options for improving the Retail Prices Index, ONS; <http://www.ons.gov.uk/ons/about-ons/user-engagement/consultations-and-surveys/archived-consultations/2012/national-statistician-s-consultation-on-options-for-improving-the-retail-prices-index/index.html>

² Experimental statistics are new official statistics undergoing evaluation.

Construction of RPIJ

Consumer price statistics measure changes in the cost of a representative basket of goods and services in the UK. This involves weighting together aggregated prices for different categories of goods and services so that each takes its appropriate share within household budgets. For example, as most people spend far more on electricity than on dry cleaning a price rise for electricity should have more effect on overall price rises than a similar-sized increase for dry cleaning. Giving a greater weight to electricity ensures its effects are reflected appropriately in the index.

The RPI, and hence RPIJ, is produced in stages, with indices derived at each stage weighted together to give higher level indices. A sample of prices is collected for a selection of items that are representative of UK consumer expenditure. There are currently almost 700 representative goods and service in the RPI basket.

Strata indices are combined (using expenditure weights) to produce an overall index for each item. Indices for items are then weighted together into broader categories called sections, which are themselves weighted together into broader categories called groups. 'Food', 'Alcoholic Drink' and 'Clothing & Footwear' are groups. 'Home-Killed Lamb', 'Beer On [Licence] Sales' and 'Women's Outerwear' are sections. Items 'Loin Chops' and 'Shoulder With Bone' are selected to represent the section 'Home-Killed Lamb'.

The lowest level of aggregation (ie the first point at which individual price quotes are combined into an index), is termed the 'elementary aggregate'. There is typically no information available on households' expenditure at this level and therefore it is necessary to average prices of items together using an unweighted approach.

For the RPI, the elementary aggregates are calculated using one of two approaches, Carli or Dutot, For RPIJ, the use of the Carli formula has been replaced with the Jevons formula (see Annex A for a list of items where the replacement has occurred). The following section looks at these three approaches to averaging prices. All other aspects of RPIJ are the same as for the RPI and readers interested in detailed explanations about its construction and basis should refer to ONS's Consumer Price Indices Technical Manual³.

Averaging prices

When looking at inflation we are interested in changes in prices between two periods. Therefore we can look at how average prices change or the average of price change. These two concepts sound similar but are quite different. Price changes are often referred to as price relatives, because they show a price for one period relative to a different period.

Suppose we want to measure inflation for apples and we collect prices for apples in four supermarkets (A, B, C and D) over a two month period, noting that these are illustrative examples and do not show what the differences are in practice.

³ The Consumer Price Indices Technical Manual, 2012 ONS: <http://www.ons.gov.uk/ons/rel/cpi/consumer-price-indices---technical-manual/2012-edition/index.html>

Table 1: Price of apples in four supermarkets

Price (£) per kg		
Store	Period 0	Period 1
A	1.20	1.20
B	0.85	0.80
C	1.00	0.90
D	0.78	0.85
Total	3.83	3.75

For the Carli formula, we look at the rate of change in each store and then take the average of those changes (also known as the ‘average of price relatives’). The Carli is the average rate of change (multiplied by 100 to create an index) calculated as follows:

$$\begin{aligned}
 I_{t,0} &= \frac{1}{n} \sum_{i=1}^n \frac{p_{i,t}}{p_{i,0}} \\
 &= \frac{1}{4} \left(\frac{1.20}{1.20} + \frac{0.80}{0.85} + \frac{0.90}{1.00} + \frac{0.85}{0.78} \right) \times 100 \\
 &= \frac{1}{4} 1.00 + 0.94 + 0.90 + 1.09 \times 100 \\
 &= 98.3
 \end{aligned}$$

This gives a decrease in price of 1.7 per cent from Period 0 to Period 1 (where Period 0 is the ‘base’ month which is set to equal 100.0).

For the Dutot formula we average the prices in each period and then calculate the rate of change. The Dutot is the ratio of average prices (multiplied by 100 to create an index) calculated as follows:

$$I_{t,0} = \frac{\sum_{i=1}^n \frac{p_{i,t}}{n}}{\sum_{i=1}^n \frac{p_{i,0}}{n}}$$

$$\begin{aligned}
 &= \frac{\frac{1}{4} (1.20 + 0.80 + 0.90 + 0.85)}{\frac{1}{4} (1.20 + 0.85 + 1.00 + 0.78)} \times 100 \\
 &= \frac{\frac{1}{4} (3.75)}{\frac{1}{4} (3.83)} \times 100 \\
 &= 97.9
 \end{aligned}$$

This gives a decrease in price of 2.1 per cent from Period 0 to Period 1.

Both the Carli and Dutot formulae are used in the RPI. The National Statistician's consultation concluded that the Carli does not meet international standards and recommended that a new index be published, using a geometric approach. This approach, known as the Jevons, takes the geometric mean of the rate of change (also known as the 'geometric mean of price relatives') or the ratio of the geometric mean prices. Both of these calculations produce the same result.

The Jevons therefore can be calculated as:

$$\begin{aligned}
 I_{t,0} &= \sqrt[n]{\prod_{i=1}^n \frac{p_{i,t}}{p_{i,0}}} & I_{t,0} &= \frac{\sqrt[n]{\prod_{i=1}^n p_{i,t}}}{\sqrt[n]{\prod_{i=1}^n p_{i,0}}} \\
 &= \sqrt[4]{\frac{1.20}{1.20} \times \frac{0.80}{0.85} \times \frac{0.90}{1.00} \times \frac{0.85}{0.78}} \times 100 \\
 &= \sqrt[4]{0.92} \times 100 \\
 &= 98.0
 \end{aligned}$$

Or,

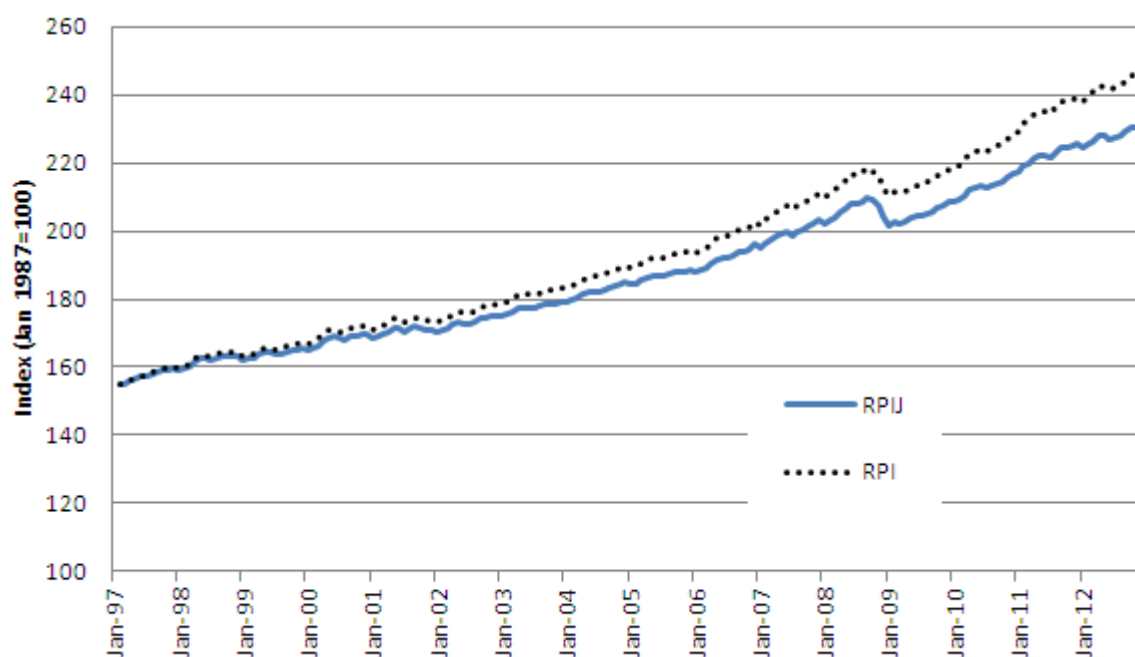
$$\begin{aligned}
 &= \frac{\sqrt[4]{1.20 \times 0.80 \times 0.90 \times 0.85}}{\sqrt[4]{1.20 \times 0.85 \times 1.00 \times 0.78}} \times 100 \\
 &= \frac{\sqrt[4]{0.73}}{\sqrt[4]{0.80}} \times 100 \\
 &= 98.0
 \end{aligned}$$

This gives a decrease in price of 2.0 per cent from Period 0 to Period 1.

RPIJ compared with RPI

Replacing the Carli with the Jevons in RPIJ will result in it generating estimates of inflation that are lower than or equal to the RPI because of the mathematical relationship between the two formulae. To allow RPIJ to meet its primary objective, which is to show the impact of the use of the Carli in the RPI, it has been developed with the same base period as the RPI, so January 1987=100. Figure 1 shows how RPIJ compares with the all items RPI for the period 1997 to 2012. This is the period for which historical estimates of RPIJ have been produced since it is the timeframe over which the necessary microdata that allow replication of the RPI to take place are available. Similarly, ONS will be providing RPIJ at the all items level only.

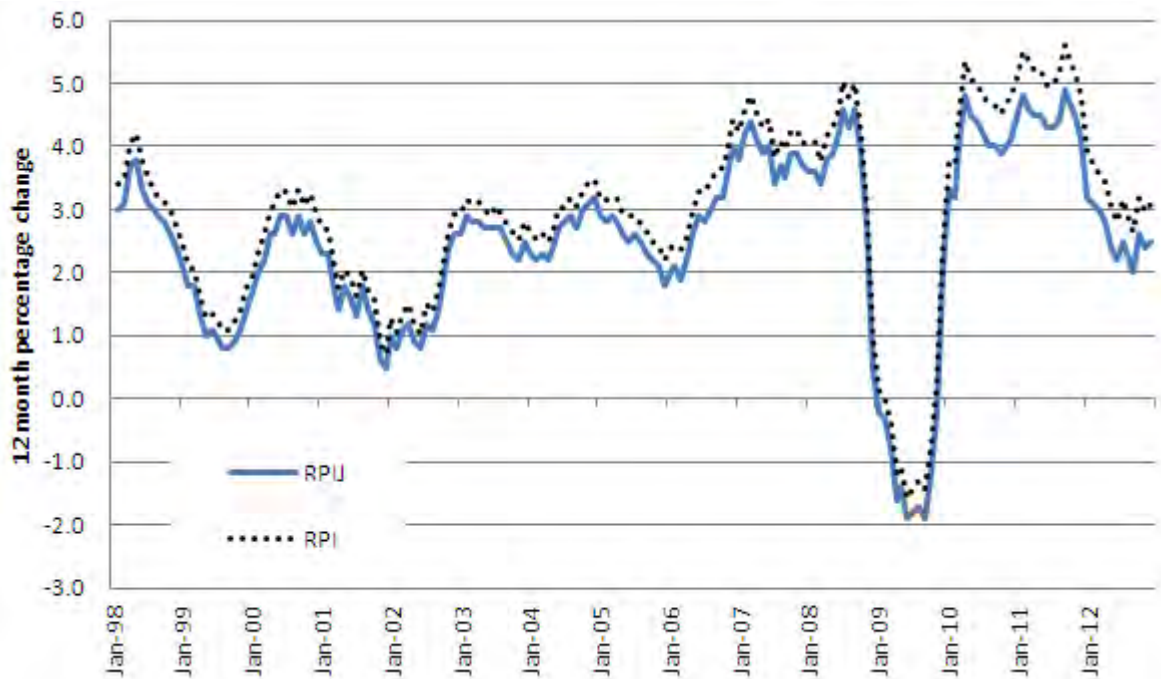
Figure 1: RPIJ and RPI index (Jan 1987 = 100), 1997-2012



In December 2013 the index level for RPIJ is 231.5 compared to 246.8 for RPI, thus after a 16 year period (1997 to 2012) the RPI is nearly 7 per cent higher than RPIJ.

Users will also be interested in the differences in the growth rates that exist between RPIJ and RPI, and these are shown in Figure 2, below. The data underpinning these charts are available for download alongside this article.

Figure 2: RPIJ and RPI 12-month change, 1998-2012



Uses

As noted above, RPIJ has been produced to allow users to understand the impact that the use of the Carli formula at the elementary level has when constructing the RPI. The Carli's substitution by the Jevons means that RPIJ is closer to international standards than the RPI, but users should note that RPIJ's scope, weights and use of the Dutot for elementary aggregates are the same as in the RPI. In particular, users should recall that the weights for RPIJ explicitly exclude data on households where the head of the household is retired (at least 65 years of age for men and 60 years or more for women) and economically inactive, and where at least three quarters of the household's income is from state benefits; and high-income households, defined as those households whose total household income lies within the top 4% of all households (see the Technical Manual for further information). Effectively, RPIJ is weighted to reflect a subset of the UK population.

Future Developments

Beginning on 19 March 2013, RPIJ will be released alongside RPI in the Consumer Price Indices Bulletin.

Annex A: List of items where the Carli formula has been replaced with the Jevons formula in RPIJ

Table A1: Items where the Carli formula has been replaced with the Jevons formula in RPIJ

Item ID	Item Description	Weight (parts per thousand)	Formula RPIJ	Formula RPI
410101	PRIV RENTD UNFURNISHD PROPERTY	27.000	Jevons	Carli
410103	PRIVATE RENTED FURNISHED PRPTY	18.000	Jevons	Carli
410301	COUNCIL TAX GREAT BRITAIN	40.180	Jevons	Carli
410302	NORTHERN IRELAND RATES	0.820	Jevons	Carli
410401	E & W SEWERAGE CHARGE	5.980	Part Weighted - Jevons	Part Weighted - Carli
410402	ENGLAND & WALES WATER CHARGES	5.720	Part Weighted - Jevons	Part Weighted - Carli
410508	PLUMBER DAYTIME HOURLY RATE	1.800	Jevons	Carli
410509	ELECTRICIAN DAYTIME RATE/HOUR	1.890	Jevons	Carli
410516	GAS SERVICE CHARGE LOCAL	1.710	Jevons	Carli
410517	DECORATOR DAILY RATE SPEC HRS	1.800	Jevons	Carli
410518	CARPENTER HOURLY RATE	1.800	Jevons	Carli
410605	PAINT EMULSION WHITE 2.5-5LTR	0.560	Jevons	Carli
410610	POWER POINT DOUBLE SOCKET	0.560	Jevons	Carli
410611	DOOR HANDLE PACK FOR ONE DOOR	0.640	Jevons	Carli
410614	POWER DRILL HAMMER ACTION	0.240	Jevons	Carli
410622	GLOSS PAINT WHITE 750ML-2.5LTR	0.560	Jevons	Carli
410625	SCREWDRIVER	0.400	Jevons	Carli
410626	CERAMIC TILE PLAIN BOX OF 6-44	0.240	Jevons	Carli
410628	PAIR OF BASIN TAPS (NOT MIXER)	0.640	Jevons	Carli
410631	SHOWER HEAD	0.560	Jevons	Carli
410701	DWELLING INSURANCE	4.140	Part Weighted - Jevons	Part Weighted - Carli
420405	KEROSENE 1000L DELIVERED	2.550	Jevons	Carli
430101	DOUBLE WARDROBE	1.100	Jevons	Carli
430104	ARMCHAIR UPHOLSTERED	1.100	Jevons	Carli
430108	DOUBLE BED WIDTH APPROX 135CM	1.540	Jevons	Carli
430112	SOFA BED	1.100	Jevons	Carli
430118	SINK SINGLE DRAINER 1-1.5 BOWL	2.420	Jevons	Carli
430119	KITCHEN BASE UNIT SELF ASSMBLY	2.420	Jevons	Carli
430120	COFFEE TABLE	0.880	Jevons	Carli

Item ID	Item Description	Weight (parts per thousand)	Formula RPIJ	Formula RPI
430122	SINGLE BED WIDTH 90CM/3FT	1.540	Jevons	Carli
430127	CHEST OF DRAWERS	1.100	Jevons	Carli
430129	DINING ROOM TABLE & 4-6 CHAIRS	1.320	Jevons	Carli
430132	MATTRESS 3FT/90CM	0.660	Jevons	Carli
430133	BOOKCASE	0.660	Jevons	Carli
430134	TABLE LAMP	0.660	Jevons	Carli
430135	3 PIECE NON-LEATHER SUITE	1.100	Jevons	Carli
430136	PATIO TABLE & CHAIRS-SEASONAL	0.440	Jevons	Carli
430137	LEATHER SETTEE	3.080	Jevons	Carli
430138	HOME OFFICE DESK	0.880	Jevons	Carli
430204	CARPET TUFTED PER SQ M	1.890	Jevons	Carli
430206	CURTAINS READY MADE SPEC SIZE	0.540	Jevons	Carli
430211	DUVET DOUBLE TOG 10-13.5	0.360	Jevons	Carli
430216	DUVET COVER	0.450	Jevons	Carli
430224	FITTED BED SHEET	0.450	Jevons	Carli
430226	FLOOR RUG	1.800	Jevons	Carli
430227	LAMINATE FLOORING PER SQ M	0.270	Jevons	Carli
430228	BATH SHEET	0.540	Jevons	Carli
430229	FABRIC ROLLER BLIND 120-180CM	0.540	Jevons	Carli
430230	CARPET AXMINSTER MIN 80% WOOL	1.890	Jevons	Carli
430232	HARDWOOD FLOORING	0.270	Jevons	Carli
430304	ELECTRIC COOKER	0.540	Jevons	Carli
430307	ELECTRIC KETTLE 1.5-1.7L	0.420	Jevons	Carli
430317	ELECTRIC IRON	0.240	Jevons	Carli
430321	ELECTRIC RAZOR	0.120	Jevons	Carli
430323	PHONE NT MOBILE SPEC DIG/ANAL	0.180	Jevons	Carli
430325	ELECTRIC HEATER	0.480	Jevons	Carli
430334	MOBILE PHONE HANDSET	0.540	Jevons	Carli
430339	ELECTRIC COOLING FAN	0.480	Jevons	Carli
430351	ELECTRIC HAIR STYLING APP	0.180	Jevons	Carli
430352	FRIDGE FREEZER RS 2010-12	0.660	Jevons	Carli
430354	WASHING MACHINE RS 2010-12	0.960	Jevons	Carli

Item ID	Item Description	Weight (parts per thousand)	Formula RPIJ	Formula RPI
430355	VACUUM CLEANER	0.420	Jevons	Carli
430356	DISH WASHER 12 SETTINGS	0.240	Jevons	Carli
430357	SMART PHONE HANDSETS	0.540	Jevons	Carli
430407	SMALL SAUCEPAN MILK NON STICK	0.560	Jevons	Carli
430409	SCISSORS HOUSEHOLD	0.520	Jevons	Carli
430413	GAS FIRE	0.440	Jevons	Carli
430414	GAS COOKERS SPECIFY MAKE & MOD	0.280	Jevons	Carli
430419	STAINLESS STEEL CUTLERY SET	0.160	Jevons	Carli
430420	CROCKERY SET SPECIFY CONTENTS	0.360	Jevons	Carli
430423	FRYING PAN 24-30CM	0.520	Jevons	Carli
430530	BLACK INKJET CARTRIDGE	0.520	Jevons	Carli
430617	ANIMAL CAGE (E.G FOR GERBIL)	0.400	Jevons	Carli
430622	DOG KENNEL FEES DAILY CHARGE	1.200	Jevons	Carli
430623	SMALL CAGED MAMMAL	1.120	Jevons	Carli
440101	DOMESTIC CLEANER HOURLY RATE	1.170	Jevons	Carli
440112	ELECTRICAL SERVICE CHARGE	0.130	Jevons	Carli
440113	WINDOW CLEAN 3-BED SEMI	0.910	Jevons	Carli
440116	WASHING MACHINE REPAIR	0.130	Jevons	Carli
440118	PC REPAIR	0.260	Jevons	Carli
440121	CATERING 50 SET MENU PER HEAD	1.170	Jevons	Carli
440122	HOME DELIVERY CHARGES	0.130	Jevons	Carli
440123	HOME REMOVAL 1 VAN	0.260	Jevons	Carli
440125	GARDENER HOURLY RATE	0.910	Jevons	Carli
440126	WEEKLY NANNY FEES	1.950	Jevons	Carli
440127	MONTHLY SELF STORAGE FEE	0.260	Jevons	Carli
440128	HOME CARE ASSISTANT HRLY RATE	1.170	Jevons	Carli
440129	PLAYGROUP FEES PER SESSION	0.520	Jevons	Carli
440130	AFTER SCHOOL CLUB CHARGES	0.520	Jevons	Carli
440131	WATCH BATTERY REPLACEMENT	0.260	Jevons	Carli
440208	HOUSE CONTENTS INSURANCE	4.640	Part Weighted - Jevons	Part Weighted - Carli
440226	HOME BUYERS SURVEY RSDNTL PPTY	0.290	Jevons	Carli
440227	FUNERAL CREMATION	0.580	Jevons	Carli

Item ID	Item Description	Weight (parts per thousand)	Formula RPIJ	Formula RPI
440232	NURSERY FEES CHILD 0-4	0.290	Jevons	Carli
440233	NEWSPAPER AD NON TRADE 20 WORD	0.290	Jevons	Carli
440239	UK UNIVERSITY TUITION FEES	6.380	Part Weighted - Jevons & Fully Weighted (Laspeyres Type)	Part Weighted - Carli & Fully Weighted (Laspeyres Type)
440240	BASIC WILL FOR A SINGLE PERSON	0.290	Jevons	Carli
440246	PET INSURANCE	0.580	Part Weighted - Jevons	Part Weighted - Carli
440249	HOUSE CONVEYANCING	0.870	Jevons	Carli
440254	HOURLY RATE FOR SOLICITOR	0.290	Jevons	Carli
440257	HOUSEHLD SERVICES MAINT POLICY	1.450	Jevons	Carli
440258	DATING AGENCY FEES	0.290	Jevons	Carli
510101	MENS SUIT READY MADE	0.900	Jevons	Carli
510104	MENS JACKET/COAT	0.720	Jevons	Carli
510106	MEN'S JEANS	0.720	Jevons	Carli
510108	MEN'S JUMPER KNITTED	0.540	Jevons	Carli
510109	MEN'S FORMAL SHIRT LONG SLEEVE	0.720	Jevons	Carli
510113	MEN'S CASUAL S/SLEEVE TOP	0.450	Jevons	Carli
510117	MEN'S FORMAL RDY MADE TROUSERS	0.270	Jevons	Carli
510118	MEN'S CASUAL TROUSERS	0.630	Jevons	Carli
510120	MEN'S JUMPER OR SWEATSHIRT	0.720	Jevons	Carli
510122	MEN'S TRACKSUIT/JOGGIN BOTTOMS	0.450	Jevons	Carli
510124	MEN'S SHORTS	0.450	Jevons	Carli
510126	MEN'S BRANDED T-SHIRT	0.720	Jevons	Carli
510127	ADULT OFFICIAL FOOTBALL SHIRT	0.450	Jevons	Carli
510128	MEN'S BRANDED SPORT SWEATSHIRT	0.450	Jevons	Carli
510130	MEN'S 3/4 TO FULL LENGTH COAT	0.360	Jevons	Carli
510131	MENS CASUAL SHIRT	0.450	Jevons	Carli
510206	WOMEN'S BLOUSE/SHIRT 1	0.480	Jevons	Carli
510207	WOMEN'S SHORT SLEEVE TOP	0.800	Jevons	Carli
510208	WOMEN'S FORMAL JACKET	0.960	Jevons	Carli
510212	WOMEN'S JUMPER	0.640	Jevons	Carli
510215	WOMENS BASIC PLAIN T-SHIRT	0.800	Jevons	Carli
510219	WOMEN'S CASUAL OUTER JACKET	1.280	Jevons	Carli
510223	WOMEN'S LONG SLV TOP NT BLOUSE	0.640	Jevons	Carli

Item ID	Item Description	Weight (parts per thousand)	Formula RPIJ	Formula RPI
510233	WOMEN'S CARDIGAN	1.120	Jevons	Carli
510235	WOMEN'S TROUSERS CASUAL	0.960	Jevons	Carli
510236	WOMEN'S TROUSERS FORMAL	1.600	Jevons	Carli
510237	WOMEN'S SKIRT CASUAL	0.320	Jevons	Carli
510238	WOMEN'S SKIRT WORK/FORMAL	0.960	Jevons	Carli
510244	WOMEN'S VEST/STRAPPY TOP	0.320	Jevons	Carli
510245	WOMEN'S DRESS CASUAL/FORMAL	0.640	Jevons	Carli
510246	WOMEN'S SHORT SLEEVE SPORTS TOP	0.320	Jevons	Carli
510248	WOMEN'S JEANS OWN BRAND	0.320	Jevons	Carli
510249	WOMEN'S JEANS BRANDED	0.320	Jevons	Carli
510250	WOMEN'S COAT	0.800	Jevons	Carli
510252	WOMEN'S CASUAL TROUSERS 2	0.960	Jevons	Carli
510254	WOMEN'S SHORTS	0.320	Jevons	Carli
510255	WOMEN'S SWIMWEAR	0.160	Jevons	Carli
510256	WOMEN'S SHOWERPROOF JACKET	0.800	Jevons	Carli
510257	WOMENS BLOUSE / SHIRT 2	0.480	Jevons	Carli
510324	TROUSERS SUITABLE FOR SCHOOL	0.550	Jevons	Carli
510328	BOY'S JEANS (5 -15 YEARS)	0.550	Jevons	Carli
510330	BABYGRO OR SLEEPSUIT	0.450	Jevons	Carli
510336	GIRL'S SKIRT (5-15 YEARS)	0.500	Jevons	Carli
510340	GIRL'S FASHION TOP (12-15Y)	0.500	Jevons	Carli
510341	CHILD'S TROUSERS (18MTHS-4YR)	0.450	Jevons	Carli
510344	GIRL'S TROUSERS NOT DENIM	0.500	Jevons	Carli
510345	BOY'S BRANDED SPORTS TOP	0.550	Jevons	Carli
510346	CHILD'S JUMPER	0.450	Jevons	Carli
510347	GIRL'S JACKET (5-15 YEARS)	0.500	Jevons	Carli
510402	MEN'S PANTS/BOXER SHORTS	0.480	Jevons	Carli
510405	WOMEN'S NIGHTDRESS/PYJAMAS	0.600	Jevons	Carli
510406	WOMEN'S PANTS	0.600	Jevons	Carli
510407	BRA, CUP SIZE A-D RANGE	0.600	Jevons	Carli
510410	CHILD'S PYJAMAS	0.300	Jevons	Carli
510413	MEN'S SOCKS	0.480	Jevons	Carli

Item ID	Item Description	Weight (parts per thousand)	Formula RPIJ	Formula RPI
510415	WOMEN'S TIGHTS	0.600	Jevons	Carli
510419	MEN'S TIE	0.540	Jevons	Carli
510432	LADY'S SCARF	0.720	Jevons	Carli
510501	MEN'S SHOE FORMAL STYLE	0.360	Jevons	Carli
510506	WOMEN'S SANDALS	0.540	Jevons	Carli
510507	BOY'S SHOES	0.450	Jevons	Carli
510508	GIRL'S SHOES SCHOOL	0.450	Jevons	Carli
510515	MEN'S SHOE CASUAL STYLE	0.810	Jevons	Carli
510516	MEN'S TRAINING SHOE SPORTSWEAR	1.260	Jevons	Carli
510517	WOMEN'S TRAINING SHOES	0.630	Jevons	Carli
510528	CHILD'S TRAINERS SPORTS	0.810	Jevons	Carli
510529	WOMEN'S BOOTS	0.540	Jevons	Carli
510530	WOMEN'S SHOES FLAT MAX 1" HEEL	1.080	Jevons	Carli
510533	WOMEN'S SHOE	1.080	Jevons	Carli
510534	WALKING/HIKING BOOT	0.990	Jevons	Carli
520103	WOMEN'S UMBRELLA FOLDING	0.300	Jevons	Carli
520106	9CT GOLD CHAIN 16-18"/40-46CM	0.600	Jevons	Carli
520109	WOMEN'S HAND/SHLDER BAG	0.800	Jevons	Carli
520115	CONTACT LENS SOFT PER PAIR	0.800	Jevons	Carli
520118	FLOWER VASE	0.700	Jevons	Carli
520123	EARRINGS FASHION	0.400	Jevons	Carli
520129	PRESCRIPTION LENSES	0.800	Jevons	Carli
520130	SOLID GOLD RING 9CT	0.400	Jevons	Carli
520131	MEN'S WATCH ANALOGUE FACE	0.700	Jevons	Carli
520132	WALL HANGING MIRROR UPTO 1.5M	0.700	Jevons	Carli
520134	LUGGAGE TROLLEY CASE 60-70CM	0.800	Jevons	Carli
520135	DIAMOND SOLITAIRE RING	1.000	Jevons	Carli
520136	PHOTO FRAME	0.700	Jevons	Carli
520137	STERLING SILVER EARRINGS	0.300	Jevons	Carli
520138	SPECTACLE FRAMES WITH LENSE	1.000	Jevons	Carli
520215	MOISTURISER FACIAL 50-150ML	0.600	Jevons	Carli
520223	MASCARA	0.600	Jevons	Carli

Item ID	Item Description	Weight (parts per thousand)	Formula RPIJ	Formula RPI
520230	CONDOMS PACK OF 3-12	0.300	Jevons	Carli
520234	PERFUME/EUD DE TOILETTE	0.750	Jevons	Carli
520235	SUNSCREEN SPEC SIZE/SPF	0.600	Jevons	Carli
520243	LIQUID FOUNDATION SPECIFY SIZE	0.600	Jevons	Carli
520246	LIP GLOSS	0.600	Jevons	Carli
520301	MAN'S HAIRCUT	1.400	Jevons	Carli
520303	WOMEN'S HRDRESSING CUT/BLOWDRY	2.100	Jevons	Carli
520305	PRIVATE HEALTH CARE 1	1.260	Jevons	Carli
520311	WOMEN'S HIGHLIGHTING	0.980	Jevons	Carli
520313	NON-NHS MEDICINE PHYSIOTHERAPY	0.420	Jevons	Carli
520323	FULL LEG WAX (BOTH LEGS)	0.700	Jevons	Carli
520324	RESIDENTIAL HOME	0.140	Jevons	Carli
520325	NURSING HOME	0.140	Jevons	Carli
520326	PRIVATE DENTAL EXAMINATION	1.120	Jevons	Carli
520331	BASIC MANICURE	0.700	Jevons	Carli
520332	NON NHS CHIROPRACTOR	0.420	Jevons	Carli
610204	TYRES TUBELESS RADIAL	0.800	Jevons	Carli
610207	MOTOR CAR SPARE PARTS	0.800	Jevons	Carli
610212	CAR BATTERY	0.600	Jevons	Carli
610217	OIL FILTER	0.600	Jevons	Carli
610221	WINDSCREEN WIPER BLADES	0.600	Jevons	Carli
610226	BRAKE PADS 2 FRONT PAIRS	0.800	Jevons	Carli
610227	CAR MOT TEST FEE VAT EXEMPT	0.800	Jevons	Carli
610231	CAR SERVICE LOCAL GARAGE	1.600	Jevons	Carli
610232	CAR SERVICE MAIN DEALER	1.600	Jevons	Carli
610233	EXHAUST FITTING IN FAST FIT	1.600	Jevons	Carli
610234	BRAKE FITTING IN FAST FIT	1.600	Jevons	Carli
610235	CAR REPAIRS MAIN DEALER	3.400	Jevons	Carli
610236	CAR REPAIRS LOCAL GARAGE	3.400	Jevons	Carli
610417	CAR INSURANCE	18.750	Part Weighted - Jevons	Part Weighted - Carli
620302	TAXI FARES	1.430	Part Weighted - Jevons	Part Weighted - Carli
620303	SELF-DRIVE VAN HIRE	0.260	Jevons	Carli

Item ID	Item Description	Weight (parts per thousand)	Formula RPIJ	Formula RPI
620304	PUSH-CHAIR	0.260	Jevons	Carli
620307	SELF-DRIVE CAR HIRE BASIC 24HR	0.260	Jevons	Carli
620315	CAR PARK CHARGES	1.040	Jevons	Carli
620317	CHILDS BICYCLE	0.520	Jevons	Carli
620318	ADULT BIKE	0.520	Jevons	Carli
630123	DVD PLAYER NOT PORTABLE	0.070	Jevons	Carli
630126	DVD RECORDER	0.070	Jevons	Carli
630127	PERSONAL COMPUTERS (CPI)	0.700	Jevons	Carli
630129	LAPTOP COMPUTERS	1.540	Jevons	Carli
630138	DIGITAL RADIO (DAB)	0.140	Jevons	Carli
630143	FREEVIEW BOX	0.140	Jevons	Carli
630146	BLU-RAY PLAYER	0.070	Jevons	Carli
630147	HI-FI RS 2010-12	0.560	Jevons	Carli
630149	FLAT PANEL TV 14"-22"	0.140	Jevons	Carli
630150	FLAT PANEL TV 23"-32"	0.770	Jevons	Carli
630151	FLAT PANEL TV 33" +	1.050	Jevons	Carli
630152	MP4 PLAYER	0.280	Jevons	Carli
630153	TABLET COMPUTERS	0.140	Jevons	Carli
630220	CD ROM	0.210	Part Weighted - Jevons	Part Weighted - Carli
630226	RECORDABLE CD	0.090	Jevons	Carli
630227	REWRITABLE DVD	0.060	Jevons	Carli
630228	PRE-RECORDED DVD (FILM)	0.780	Jevons	Carli
630229	PRE-RECORDED DVD (NON-FILM)	0.330	Jevons	Carli
630233	BLU RAY DISC (FILM) FROM CHART	0.060	Jevons	Carli
630309	BOXED BOARD GAME NOT TRAVEL	0.300	Jevons	Carli
630312	CHILD'S PLASTIC DOLL	0.300	Jevons	Carli
630314	CONSTRUCTION TOY SPEC KIT NO	0.400	Jevons	Carli
630317	SLEEPING BAG	0.200	Jevons	Carli
630332	CHILD'S SOFT TOY/TEDDY BEAR	0.300	Jevons	Carli
630333	COMPUTER GAMES CONSOLE	1.100	Part Weighted - Jevons	Part Weighted - Carli
630336	FOOTBALL	0.200	Jevons	Carli
630340	CARBON FIBRE FISHING ROD	0.200	Jevons	Carli

Item ID	Item Description	Weight (parts per thousand)	Formula RPIJ	Formula RPI
630341	PRESCHOOL ACTIVITY TOY	0.600	Jevons	Carli
630342	BEGINNER'S ACOUSTIC GUITAR	0.400	Jevons	Carli
630343	MEN'S FOOTBALL BOOTS	0.200	Jevons	Carli
630344	DIGITAL CAMERAS	0.700	Jevons	Carli
630346	GAS BBQ	0.100	Jevons	Carli
630347	CHILD'S BABY DOLL	0.300	Jevons	Carli
630348	WATERSPORTS EQUIPMENT	0.300	Jevons	Carli
630352	CHILD'S SWING	0.100	Jevons	Carli
630353	CHILD'S TRIKE FOR UNDER 5'S	0.300	Jevons	Carli
630357	SQUASH/TENNIS RACQUET	0.200	Jevons	Carli
630358	PORTABLE DIGITAL STORAGE DEVIC	0.200	Jevons	Carli
630359	DIGITAL DEVELOPMENT PER PRINT	0.600	Jevons	Carli
630362	COMPUTER GAME TOP 20 CHART	0.900	Jevons	Carli
630365	CRAFT KIT FOR CHILD 5 YRS+	0.300	Jevons	Carli
630367	DIGITAL CAMCORDER	0.500	Jevons	Carli
630422	BOOK REFERENCE (EG ATLAS/DICT)	0.080	Jevons	Carli
630424	BOOK FICTION PAPERBACK TOP 10	0.480	Jevons	Carli
630425	BOOK NON-FICTION HARDCOVER	0.560	Jevons	Carli
630435	BOOK FICTION HARD COVER	0.400	Jevons	Carli
630437	BOOK TEENAGE FICTION	0.240	Jevons	Carli
630505	GARDEN SPADE	0.400	Jevons	Carli
630519	POTTED SHRUB	1.450	Jevons	Carli
630520	MOWER ELECTRIC	0.350	Jevons	Carli
640126	DVD RENTAL INTERNET SUB	0.120	Part Weighted - Jevons	Part Weighted - Carli
640207	NIGHTCLUB ENTRY SATURDAY	1.190	Jevons	Carli
640212	THEATRE ADULT EVES-FRONT STLLS	1.190	Jevons	Carli
640217	ATTRACTIONS	0.340	Part Weighted - Jevons	Part Weighted - Carli
640226	PRIVATE HEALTH CLUB ANNUAL FEE	2.040	Jevons	Carli
640234	CINEMA ADMISSION	1.360	Jevons	Carli
640238	ADMISSION TO CULTURAL EVENT	0.510	Jevons	Carli
640240	LIVERY CHARGES PER WEEK	0.510	Jevons	Carli
640303	FOREIGN HOLIDAYS INSURANCE	0.990	Part Weighted - Jevons	Part Weighted - Carli

Item ID	Item Description	Weight (parts per thousand)	Formula RPIJ	Formula RPI
640304	FOREIGN HOLIDAYS LATE BOOKING	6.270	Part Weighted - Jevons	Part Weighted - Carli
640305	FOREIGN HOLIDAYS SELF CATERING	9.240	Part Weighted - Jevons	Part Weighted - Carli
640306	FOREIGN HOLIDAYS HOTELS	11.550	Part Weighted - Jevons	Part Weighted - Carli
640307	FOREIGN HOLIDAYS CRUISES	2.310	Part Weighted - Jevons	Part Weighted - Carli
640308	FOREIGN HOLIDAYS CITY BREAKS	1.650	Part Weighted - Jevons	Part Weighted - Carli
640309	FOREIGN HOLIDAYS COACH HOLIDAY	0.990	Part Weighted - Jevons	Part Weighted - Carli
640404	UK HOLIDAYS SELF CATERING	4.140	Part Weighted - Jevons	Part Weighted - Carli
640405	UK HOLIDAYS EXCL SELF CATERING	3.600	Part Weighted - Jevons	Part Weighted - Carli
640406	HOTEL 1 NIGHT PRICE	1.170	Jevons	Carli