

# Swine-lineage Influenza A H1N1 UK update

08/06/2009

## A: UK epidemiology - latest summary of UK cases

As of 08/06/2009 621 cases have been confirmed in the UK since 27 April 2009: 426 in England, four in Northern Ireland, 189 in Scotland and two in Wales (Table 1, Figure 1). No deaths have been reported from these cases.

Cases assumed to have acquired their infection as a result of travel - 128

Cases assumed to have acquired their infection in the UK – 254

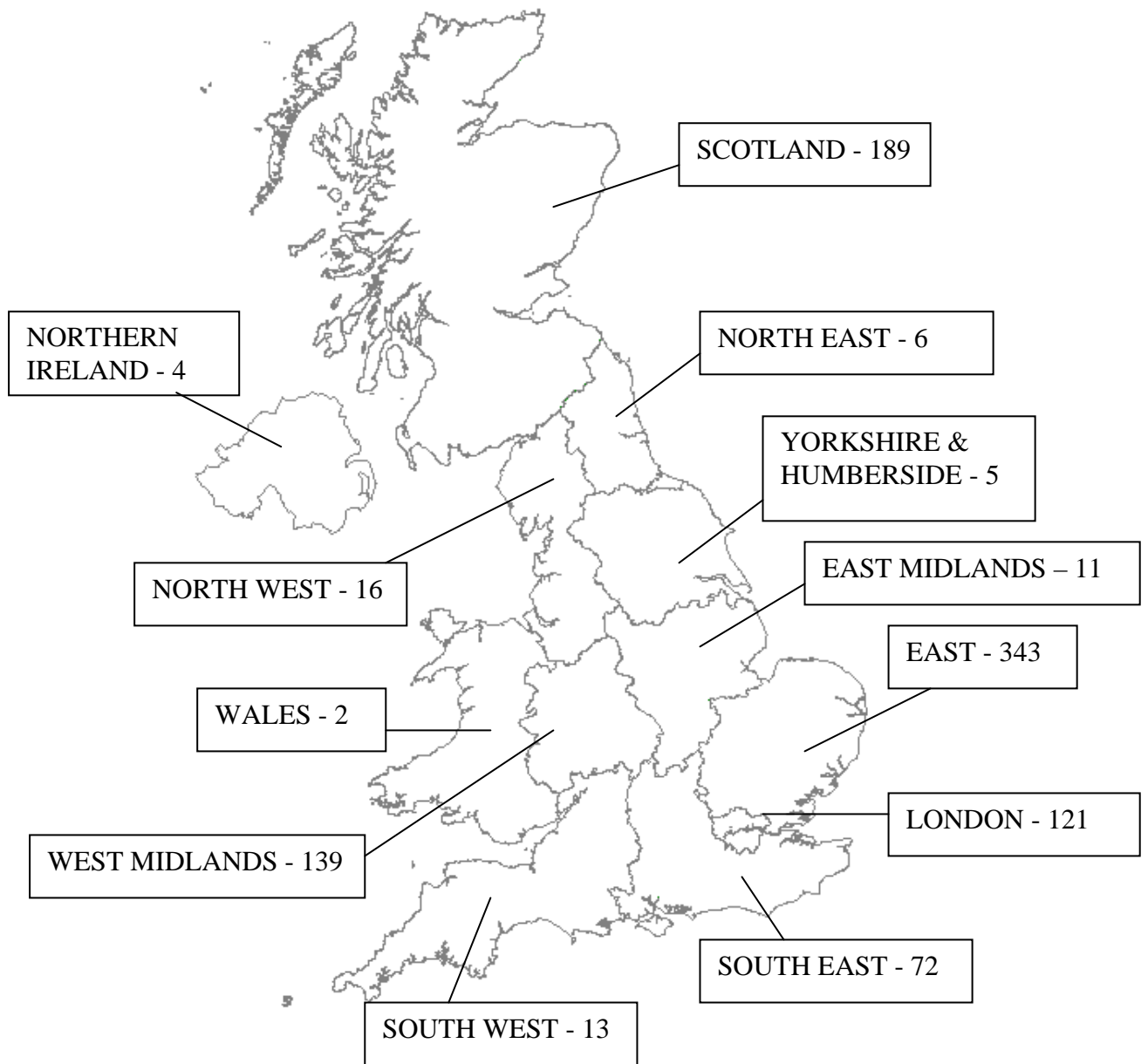
Data is still being followed up on 239 cases.

The majority of cases are in school age children and young adults.

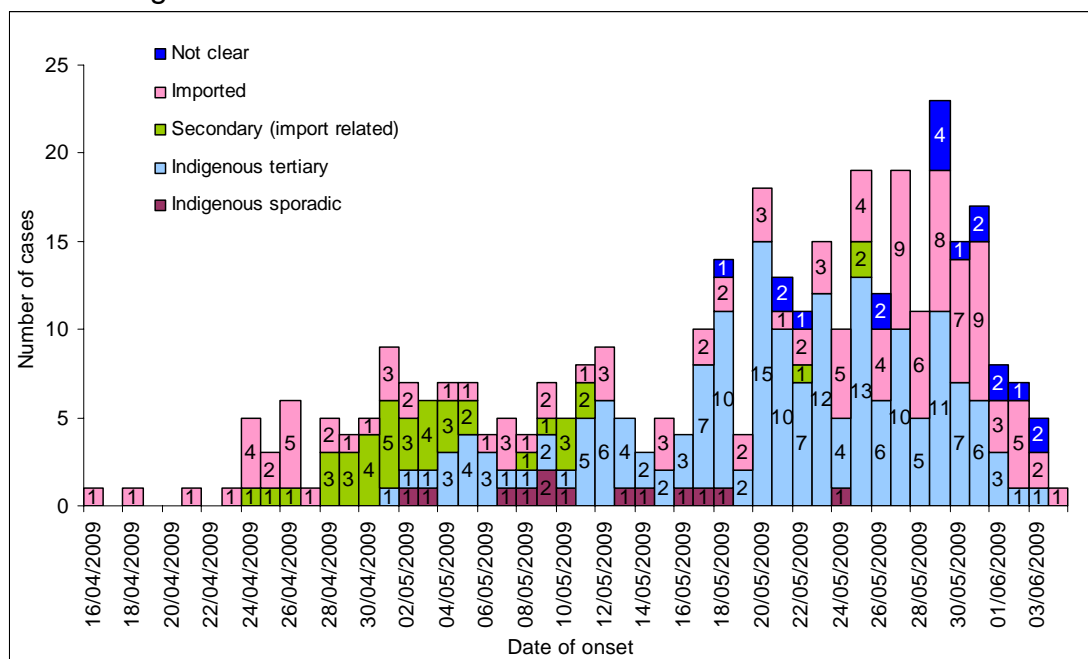
**Table 1:** Confirmed cases by Region and Devolved Administration, United Kingdom as reported by 08 June 2009.

Region	Confirmed
EAST	43
EAST MIDLANDS	11
LONDON	121
NORTH EAST	6
NORTH WEST	16
SOUTH EAST	72
SOUTH WEST	13
WEST MIDLANDS	139
YORKSHIRE & HUMBERSIDE	5
<b>Total England</b>	<b>426</b>
NORTHERN IRELAND	4
SCOTLAND	189
WALES	2
<b>Total UK</b>	<b>621</b>

**Figure 1:** Map of confirmed cases by Region and Devolved Administration, United Kingdom as reported by 08 June 2009.



**Figure 2:** Cases of laboratory confirmed swine-lineage influenza A H1N1 by day of onset and assumed mode of transmission, 08 June 2009 (n=360\*), United Kingdom



\* 261 cases with unknown date of illness onset (including 163 from Scotland).

## B. UK surveillance

### *Syndromic Surveillance*

#### **NHS Direct/HPA Syndromic Surveillance System 'swine/flu' and cold/flu algorithm calls (updated to 04 June)**

NHS Direct has an existing algorithm for cold/flu calls. In addition, a separate algorithm has been set up for swine flu calls. Both indices are shown on Figure 3. When both indices are added together, they show that the total proportion of calls to NHS Direct for cold/flu increased slightly on Wednesday 03 June.

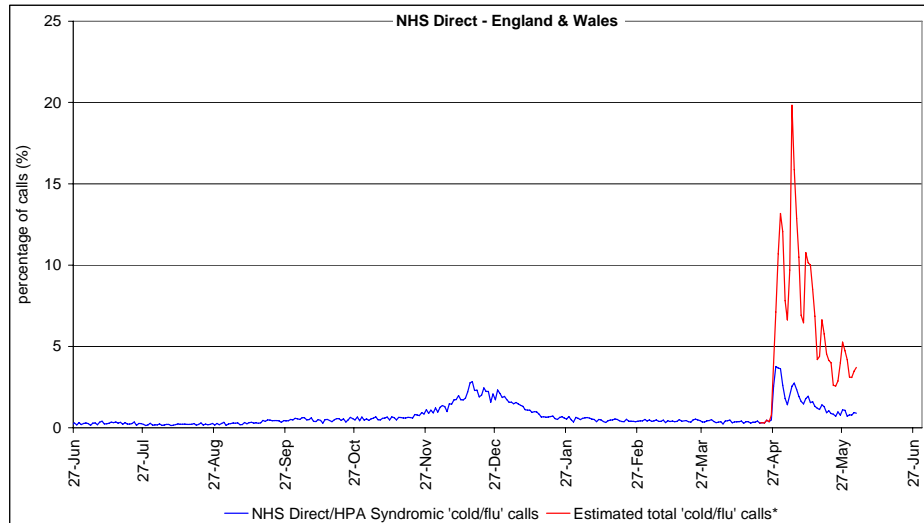
The total 'swine flu' algorithm calls increased to 587 calls on Thurs 4 June (compared to 564 calls on Wed 3 June) of which 341 (58.1%) were 'cold/flu' related. Adding these 'swine flu' algorithm 'cold/flu' calls to the NHS Direct/HPA Syndromic Surveillance 'cold/flu' calls (see paragraph below) reveals that the proportion of estimated total 'cold/flu' calls increased slightly from 4.0% on Wed 3 June to 4.1% on Thurs 4 June. At SHA level, the West Midlands showed an increase in cold/flu calls (8.0%; 84 calls) on Thurs 4 June.

June and now has the highest proportion of these calls compared to other SHAs. Cold/flu calls decreased in London SHA (4.8%, 94 calls).

June and now has the highest proportion of these calls compared to other SHAs. Cold/flu calls decreased in London SHA (4.8%, 94 calls).

There continue to be significantly high proportions of 'cold/flu' calls across most of England and Wales. Nationally call proportions remained at 0.99% on Thurs 4 June with the highest proportions in West Midlands (2.2%) and East of England (1.32%).

**Figure 3:** Daily NHS Direct/HPA Syndromic Surveillance System cold/flu calls 2008-2009 and daily NHS Direct adjusted total 'cold/flu' calls\*.

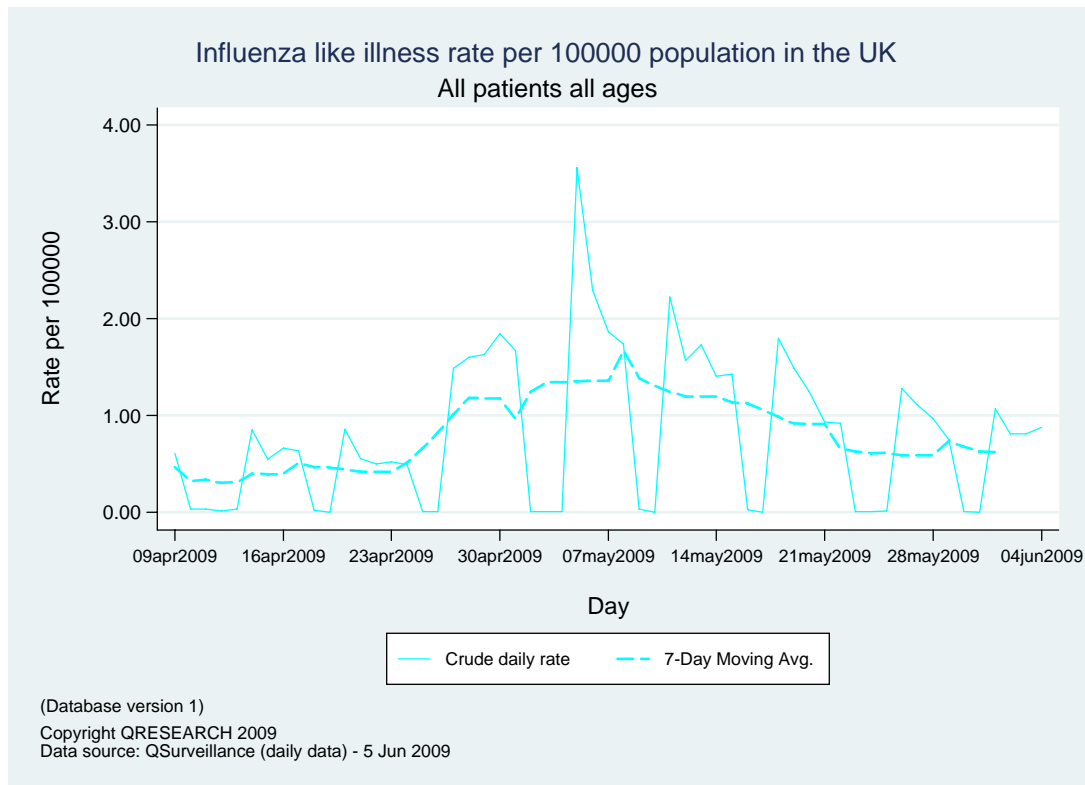


*\*Estimated total 'cold/flu' calls calculated by adding NHS Direct/HPA Syndromic 'cold/flu' calls to NHS Direct 'swine flu' algorithm 'cold/flu' calls (and calculating percentage using all NHS Direct calls as the denominator).*

### Daily QSurveillance® (updated to 04 June)

There was no change in the national consultation rate of ILI on Thurs 4 June compared to Wed 3 June (0.8 per 100,000 ). This rate was lower than the previous five Thursdays (Figure 7). At SHA level London, South Central and East of England had highest rates. London SHA recorded a rate significantly higher than UK. The consultation rate in the West Midlands increased from 0.5 per 100,000 on Wed 3 June to 0.8 per 100,000 on Thurs 4 June. In South Central SHA consultation rates increased from 0.9 per 100,000 to 1.1 per 100,000. In both SHAs consultation rates were not significantly higher than UK. Highest consultation rates (UK) were in the 25-44, 45-64 and 15-24 years age groups (1.3, 1.0, and 1.0 per 100,000 respectively).

**Figure 4:** QSurveillance® – daily consultation rate for influenza-like illness in UK (all ages)

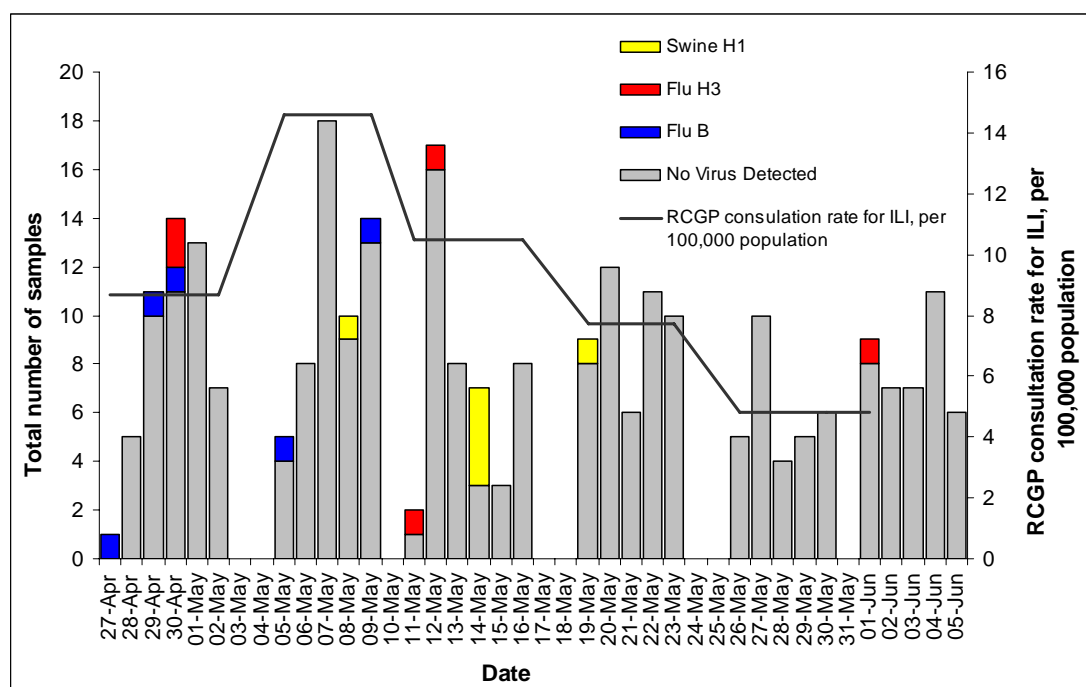


\* Bank holidays affected GP incidence rates due to the limited availability of GPs over these periods

### Enhanced virological surveillance

Primary care data are being supported by enhanced virological surveillance schemes whereby sentinel general practices are submitting samples from patients with flu-like illness (ILI) for testing for evidence of the new swine-lineage influenza A H1N1 (Figure 5). These data are in addition to the samples collected through follow up of persons with ILI symptoms who are known to be at risk due to travel in affected countries or are contacts of cases.

**Figure 6:** Data from the RCGP community based surveillance scheme (27/04/09 – 05/06/09)



## C: International situation

**WHO (update no. 39) at 06:00 GMT, 08 June 2009**

Cases have now been confirmed from 73 countries resulting in a total of 25,288 confirmed cases of Influenza A/H1N1 infection worldwide, and 139 deaths. The USA has reported 13,217 cases including 27 deaths.

[http://www.who.int/csr/don/2009\\_06\\_08/en/index.html](http://www.who.int/csr/don/2009_06_08/en/index.html)

For further information on the situation in the USA and Europe please see the following websites:

USA Center for Disease Control <http://www.cdc.gov/h1n1flu/update.htm>

European Centre for Disease Prevention and Control <http://ecdc.europa.eu/>