



NHS Referral to Treatment (RTT) Waiting Times Statistics for England

2009 Annual Report



Contents

Summary	3
Introduction	4
Methodology	5
Analysis – Current Performance	6
Analysis – Time Series	10
Annex A – Data Completeness	14
Annex B – Detailed Tables	15

Summary

Admitted Patients

- In total, 279,000 admitted patients, for whom English commissioners are responsible, completed their Referral to Treatment (RTT) pathway during December 2009. Of these, 93.3% were treated within 18 weeks, compared to 92.8% in December 2008.
- The average (median) waiting time for admitted patients in December 2009 was 7.7 weeks, compared to 7.6 weeks a year earlier.
- 15 Trusts and 13 PCTs had admitted performance below the national standard of 90% in December 2009. Nationally, admitted performance was below 90% for the neurosurgery and trauma & orthopaedics treatment functions.

Non-admitted Patients

- In total, 810,000 non-admitted patients, for whom English commissioners are responsible, completed their Referral to Treatment (RTT) pathway during December 2009. Of these, 97.9% were treated within 18 weeks, compared to 97.1% in December 2008.
- The average (median) waiting time for non-admitted patients in December 2009 was 4.2 weeks, compared to 4.1 weeks a year earlier.
- Two Trusts and two PCTs had non-admitted performance below the national standard of 95% in December 2009. Nationally, non-admitted performance was below 95% for the neurosurgery treatment function.

Incomplete Pathways

- At the end of December 2009, there were 2,370,000 patients on incomplete RTT pathways. Of these, 90.0% had been waiting less than 18 weeks. At the end of December 2008, there were 2,350,000 patients on incomplete pathways, of which 85.2% had been waiting less than 18 weeks.

1. Introduction

- 1.1. This report presents a summary of English NHS performance against the 18 weeks referral to treatment waiting times standards up to December 2009.
- 1.2. The NHS Improvement Plan (June 2004) set out the requirement that, by December 2008, no one should wait more than 18 weeks from the time they are referred to the start of their consultant-led treatment, unless it is clinically appropriate to do so or they choose to wait longer. From 1 January 2009, and as set out in the Handbook to the NHS Constitution, 'patients can expect to start their consultant-led treatment within a maximum of 18 weeks from referral for non-urgent conditions unless they choose to wait longer or it is clinically appropriate that they do so'¹. There should be no other reasons for patients waiting longer than 18 weeks across all services and specialties.
- 1.3. The national 18 weeks performance standards for admitted and non-admitted patients are 90% and 95% respectively. This allows for waits of longer than 18 weeks due to clinical complexity or patient choice.
- 1.4. This new set of statistics has not been formally assessed for compliance with the Code of Practice for Official Statistics. However, the UK Statistics Authority has agreed that, in view of the fact that the report is secondary analysis of existing official statistics (which have been assessed, and whose designation as National Statistics is dependent upon meeting certain requirements - one of which includes the release of just the type of information included in this publication), that it can be designated as National Statistics. The producer body has confirmed that the new statistics are produced to the same standards as the existing ones.
- 1.5. The Government Statistical Service (GSS) statistician responsible for producing the data in this report is:
Rob Stones
Knowledge and Intelligence, the Department of Health
Room 4E63, Quarry House, Quarry Hill, Leeds LS2 7UE
Email: data18weeks@dh.gsi.gov.uk

¹ "The NHS Constitution - A consultation on new patient rights", launched on 10 November 2009, brought forward proposals for binding commitments to patients on maximum waiting times, including starting treatment by a consultant within 18 weeks of GP referral. Further details can be found at: http://www.dh.gov.uk/en/Consultations/Liveconsultations/DH_108012

2. Methodology

- 2.1. The Department of Health (DH) compiles monthly Referral To Treatment (RTT) data to monitor the length of time from referral through to treatment and to assess performance against the 18 weeks standard. There are three central returns:
- **Unadjusted.** This return has been collected since January 2007 and was first published for March 2007. The return covers admitted patients (since January 2007), non-admitted patients (since August 2007) and patients on incomplete pathways (since August 2007)
 - **Adjusted.** Data in this return has been collected and published since March 2008, and includes data on admitted patients on an adjusted basis (i.e. excluding legitimate pauses of patients' waiting times clocks). The non-admitted and incomplete pathways data collected in this return are the same as in the unadjusted return.
 - **Performance Sharing.** This return enables the sharing of 18 week breaches where admitted patients are transferred from one NHS provider to another. This return has been collected, and provider-level data for admitted patients have been published on a performance-shared basis, since October 2008.
- 2.2. Data is submitted monthly to DH by all providers of NHS-funded, consultant-led services, via Unify2². The data is reviewed and signed off by NHS commissioners (Primary Care Trusts) before DH performs central validation checks on the data. Final figures are published to a pre-announced timetable, roughly 7 weeks after the end of the reference month³.
- 2.3. Further papers describing the methodology for monitoring of RTT waiting times can be found on the DH website⁴.
- 2.4. Data quality is assessed using a data completeness measure, which provides an estimate of data coverage for each organisation. It is given as a percentage, comparing the number of completed RTT periods with the expected number of completed periods based on other DH data sources. This is used to highlight organisations submitting unusual numbers of RTT periods. Further details of the data completeness methodology can be found in Annex A.
- 2.5. Revisions to published figures are released on a six-monthly basis and in accordance with the DH Knowledge and Intelligence team's policy⁵.

² Unify2 is DH's standard online tool for the collection and sharing of NHS performance data.

³ Figures are published according to an agreed formula: publication occurs on or after the 31st working day after the reporting month end.

⁴

http://www.dh.gov.uk/en/Publicationsandstatistics/Statistics/Perfomancedataandstatistics/18WeeksReferraltoTreatmentstatistics/DH_089757

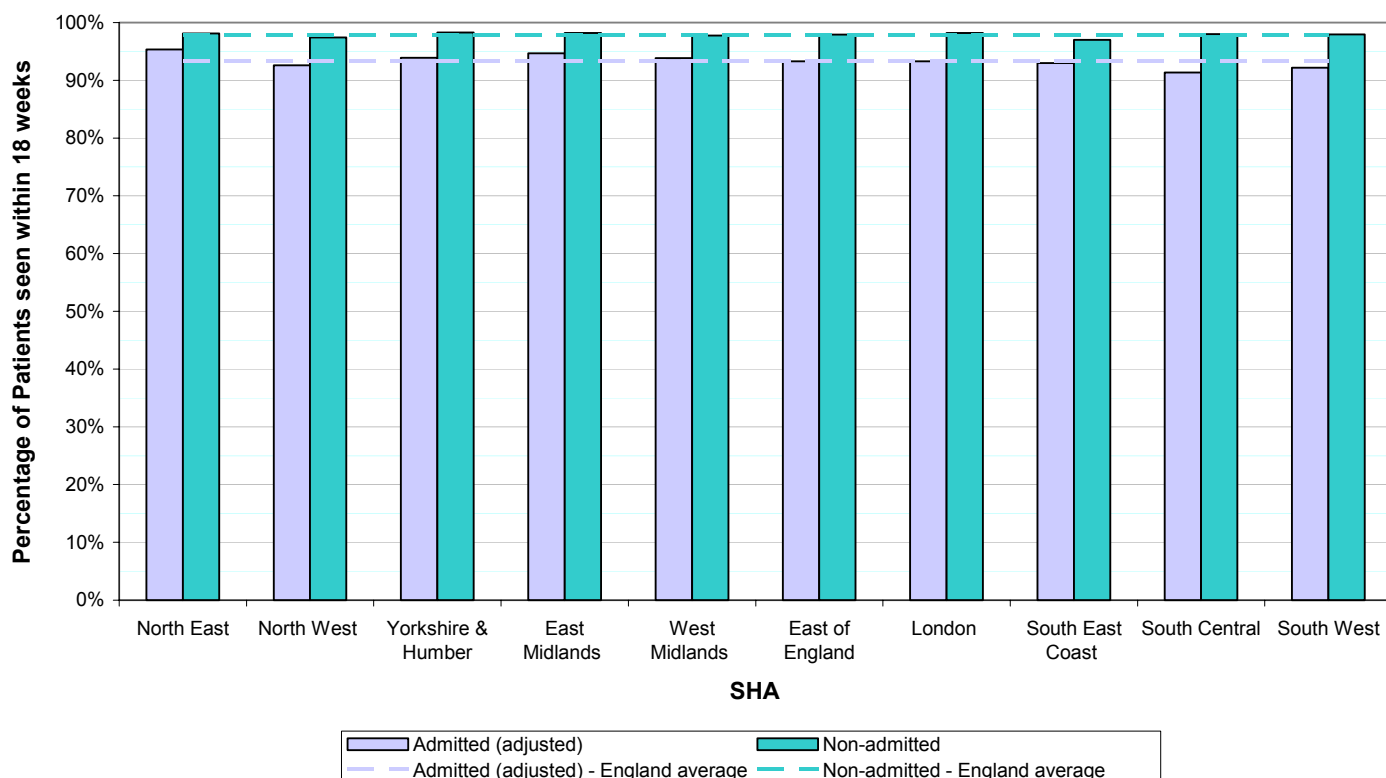
⁵

http://www.dh.gov.uk/dr_consum_dh/groups/dh_digitalassets/@dh/@en/@ps/@sta/@perf/documents/digitalasset/dh_105088.pdf

3. Analysis – Current Performance

3.1. Chart 1 shows headline performance across the ten English Strategic Health Authorities (SHAs) in December 2009:

Chart 1 - Admitted and Non-Admitted Performance by Strategic Health Authority, December 2009

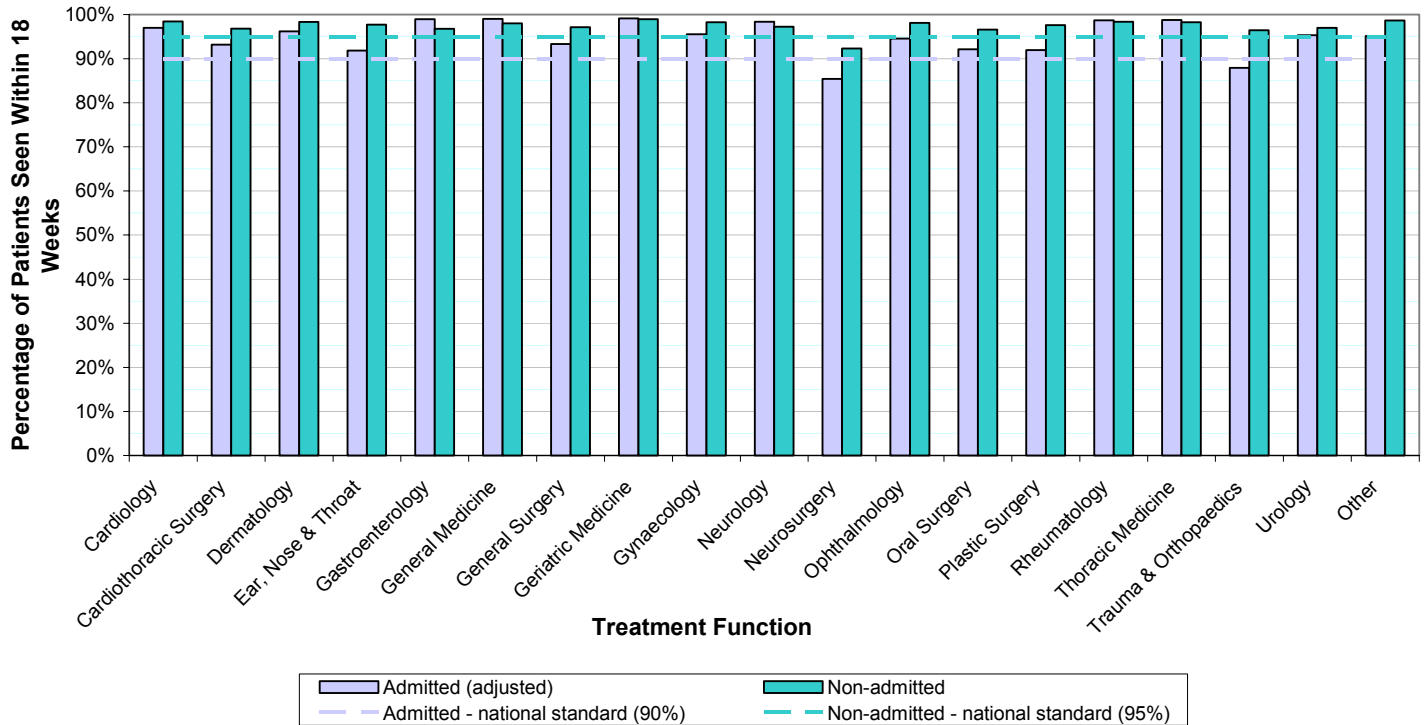


3.2. Chart 1 shows that the admitted and non-admitted standards of 90% and 95% were met by all ten SHAs in December 2009. All ten SHAs had performance close to the England average of 93.3% for admitted and 97.9% for non-admitted patients.

3.3. Annex B contains breakdowns of admitted and non-admitted performance by provider (NHS Trusts and other providers) and commissioner (Primary Care Trusts (PCTs)).

3.4. Chart 2 shows headline performance by treatment function⁶ in December 2009:

Chart 2 - Admitted and Non-admitted Performance by Treatment Function, December 2009

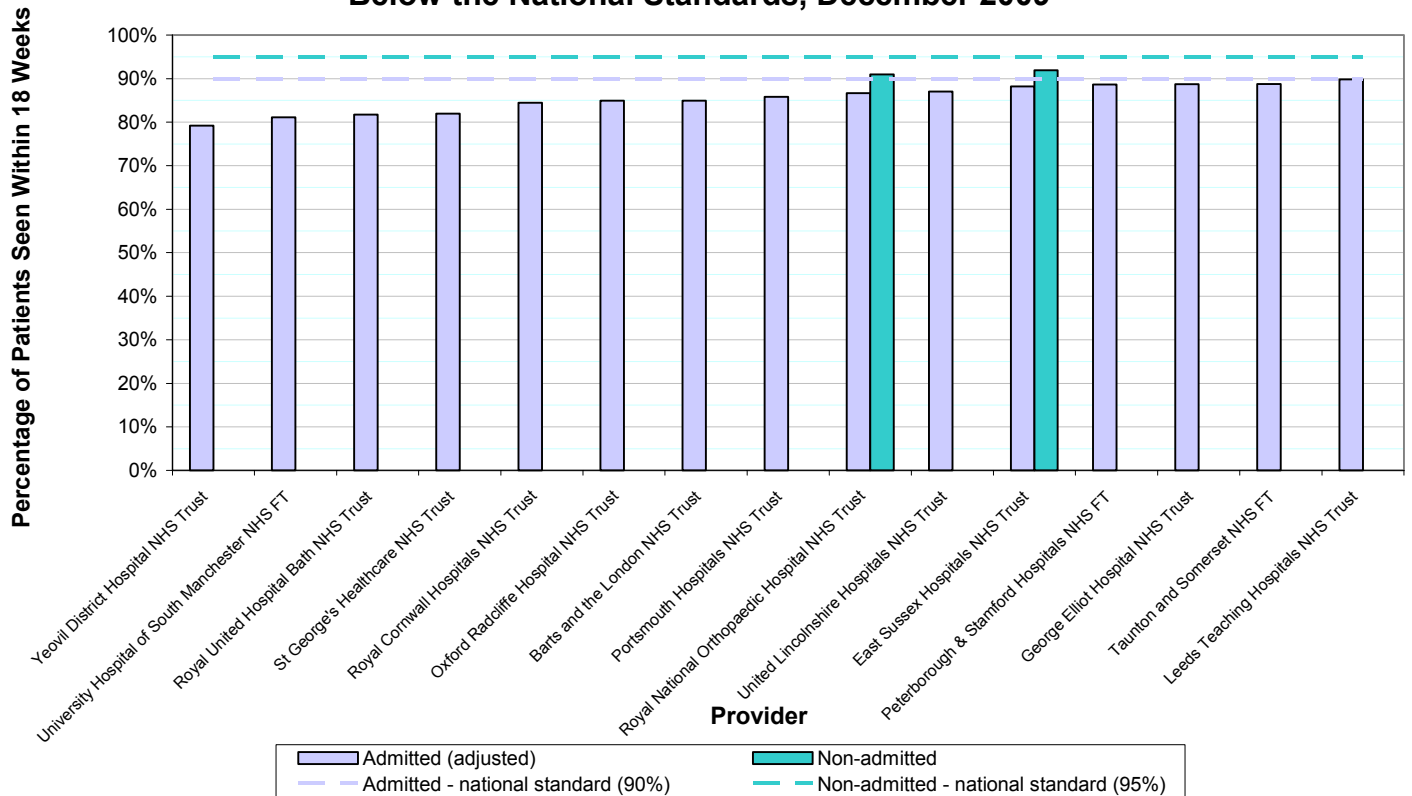


3.5. In December 2009, the admitted standard (90%) was met for all treatments functions except neurosurgery and trauma & orthopaedics, where performance stood at 85.4% and 87.9% respectively. The non-admitted standard (95%) was met for all treatment functions except neurosurgery, where performance was 92.3%.

⁶ Treatment functions are based on specialities. There are 19 treatment functions in total, which have been chosen to capture the main treatment areas.

3.6. Chart 3 shows those acute providers⁷ where admitted performance was below 90% and/or non-admitted performance was below 95% in December 2009. Admitted or non-admitted performance is only shown for each organisation if it fell below the relevant national standard.

Chart 3 - Acute Providers with Admitted and/or Non-admitted Performance Below the National Standards, December 2009

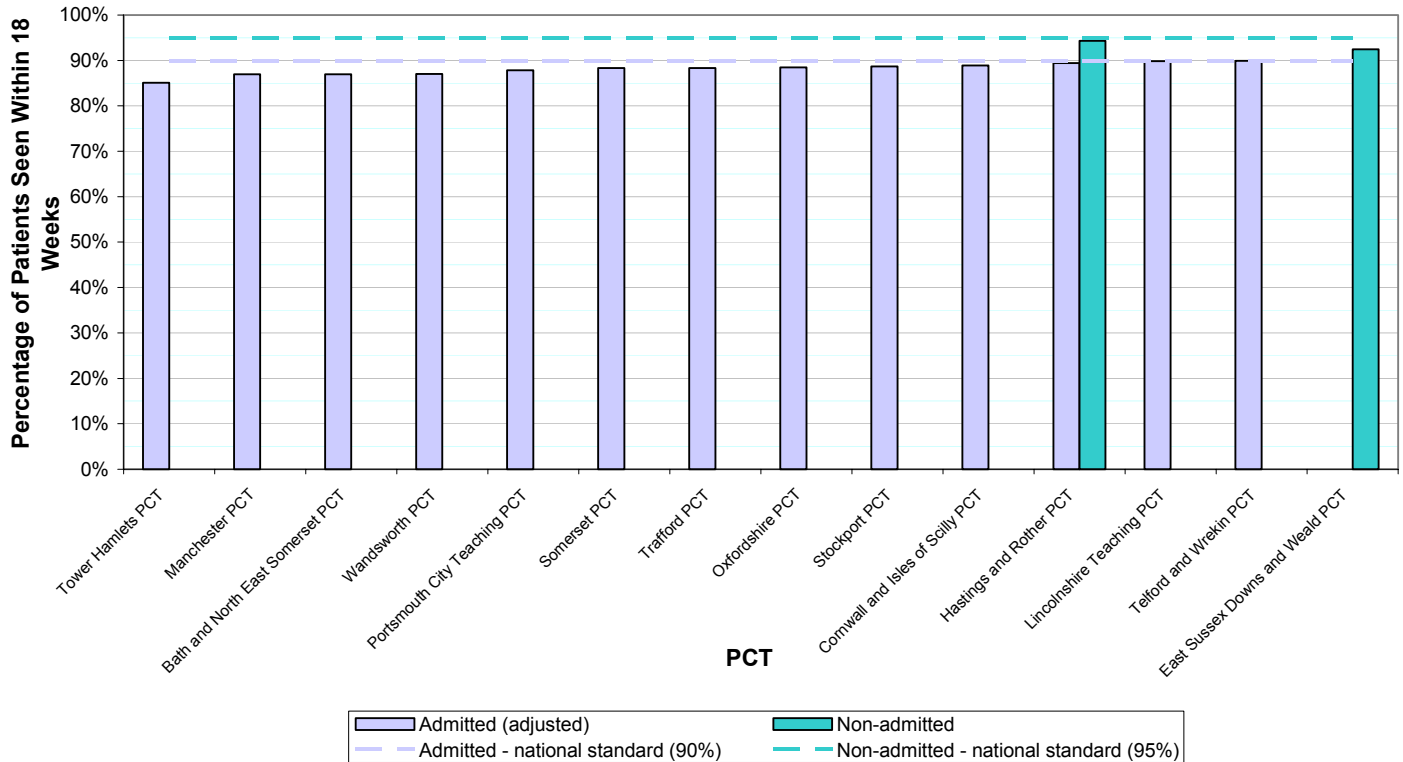


3.7. Chart 3 shows that 15 acute providers had admitted performance below 90% and that 2 had non-admitted performance below 95% in December 2009.

⁷ In 2009/10, there were 167 major providers (NHS Trusts) of acute services in England.

3.8. Chart 4 shows those NHS commissioners⁸ – Primary Care Trusts (PCTs) – where admitted performance was below 90% and /or non-admitted performance was below 95% in December 2009. Admitted or non-admitted performance is only shown for an organisation if it fell below the relevant national standard.

Chart 4 - PCTs with Admitted and/or Non-admitted Performance Below the National Standards, December 2009



3.9. In December 2009, there were 13 PCTs with admitted performance below 90% and 2 with non-admitted performance below 95%.

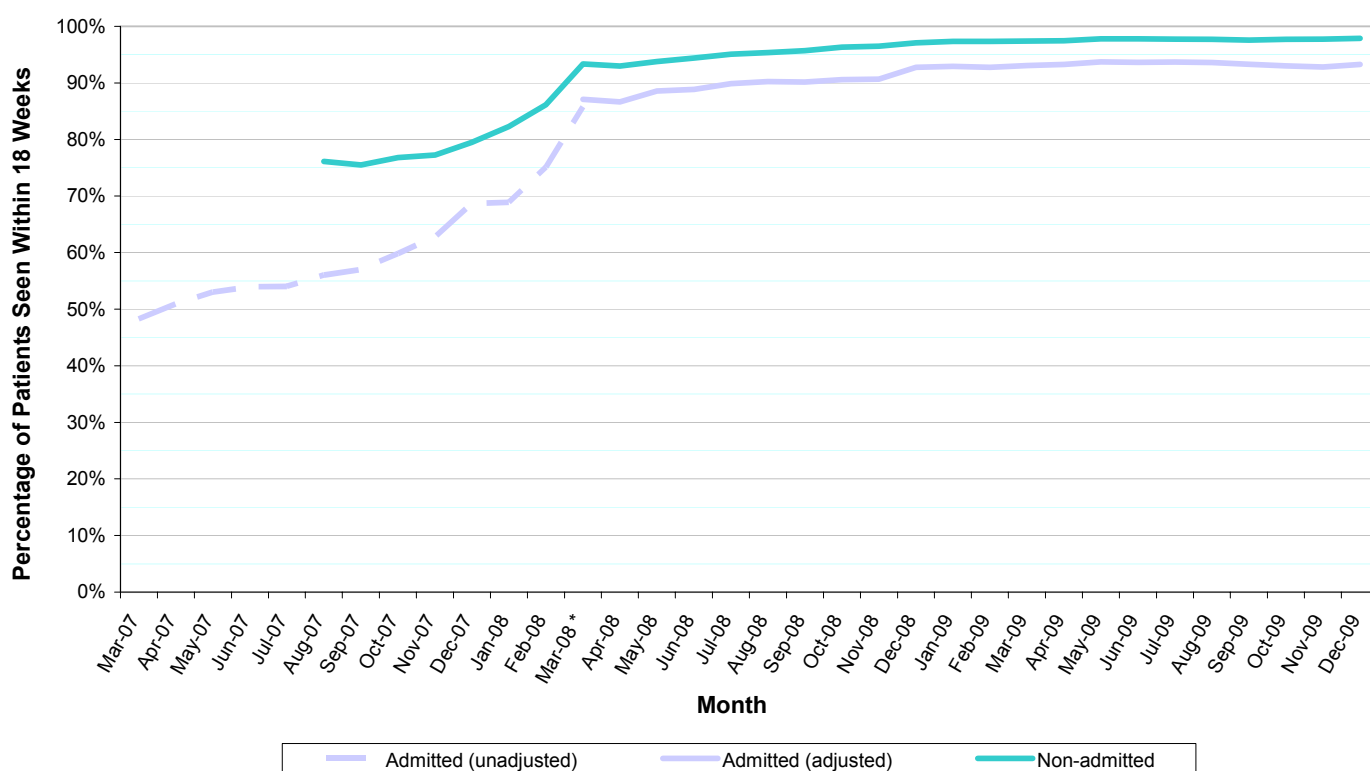
⁸ Primary Care Trusts (PCTs) are responsible for commissioning NHS services on behalf of patients who are registered with a GP practice in England. In 2009/10, there were 152 PCTs.

4. Analysis – Time Series

4.1. This section analyses 18 weeks performance over time. RTT waiting times data on admitted patients have been published on an unadjusted basis since March 2007, and on an adjusted basis since March 2008. Data on non-admitted patients have been published since August 2007.

4.2. Chart 5 shows how admitted and non-admitted performance have changed over time:

Chart 5 - 18 Weeks Performance Over Time, England

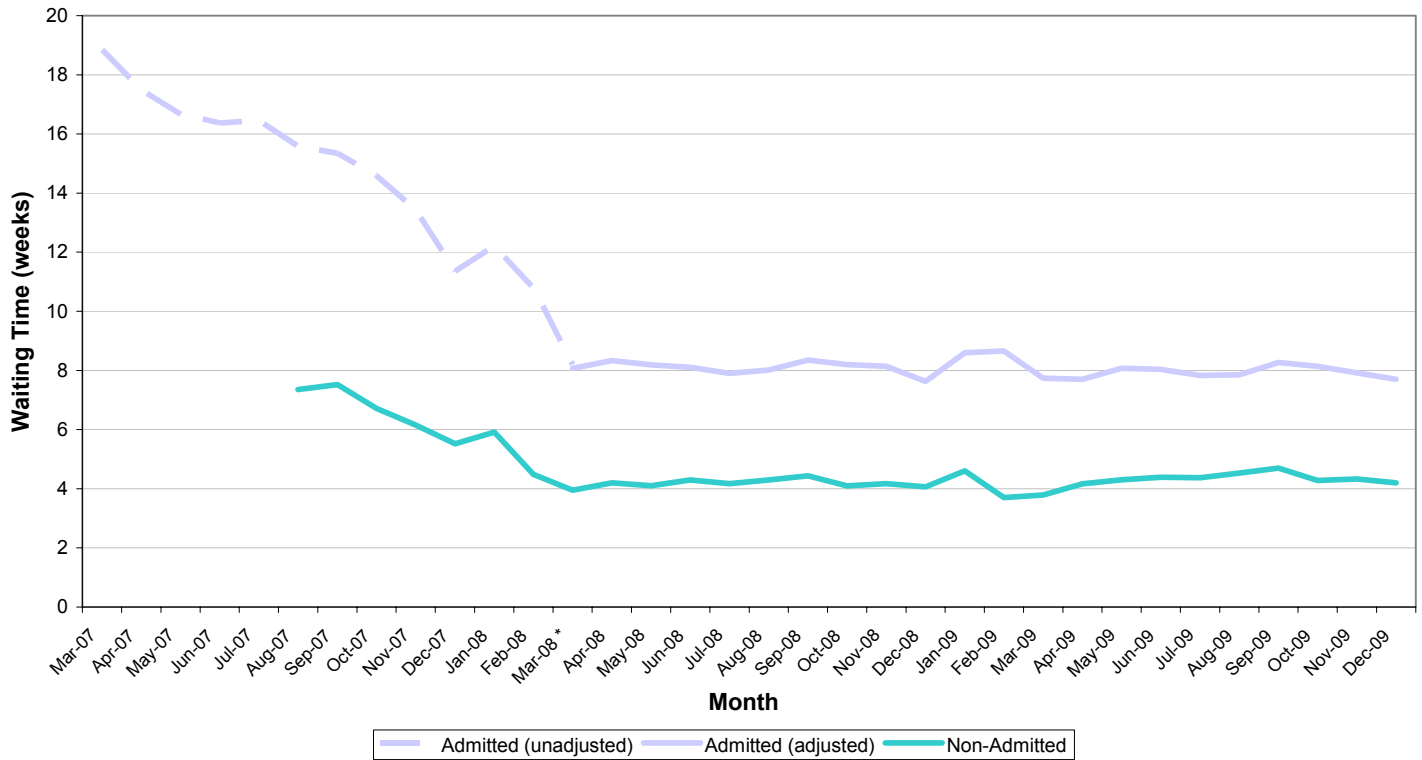


*Admitted data was reported on an unadjusted basis until March 2008, when adjustments were introduced. Non-admitted data have always been collected on an unadjusted basis.

4.3. The percentage of admitted patients treated within 18 weeks increased from 48% to 86% between March 2007 and March 2008. Non-admitted performance increased from 76% to 93% between August 2007 and March 2008. Both series showed a further, steady increase between March 2008 and January 2009, since when performance has been relatively stable at around 93% for admitted patients and 98% for non-admitted patients.

4.4. Chart 6 shows how average (median⁹) RTT waiting times have changed over time:

Chart 6 - Average (Median) RTT Waiting Times, England

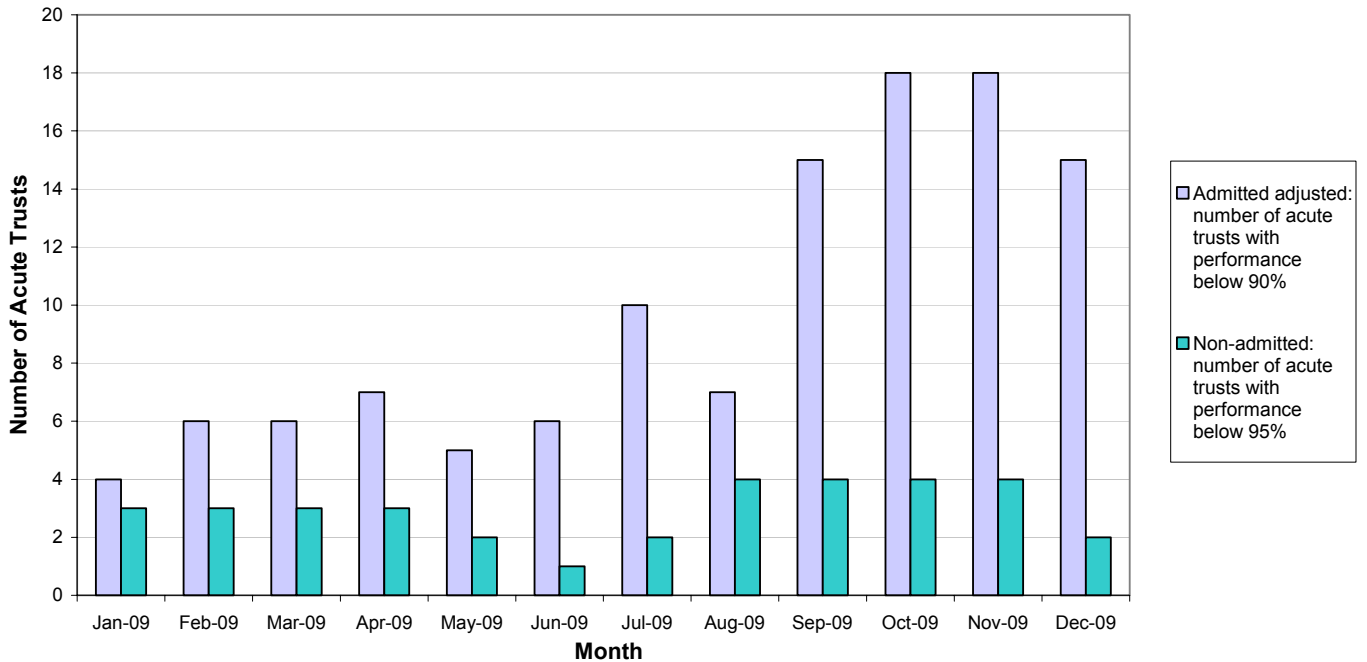


4.5. The average waiting time for admitted patients fell from just under 19 weeks in March 2007 to around 8 weeks in March 2008, and has levelled off since. The average for non-admitted patients fell from just under 8 weeks in August 2007 to around 4 weeks in March 2008, and has also been broadly level since.

⁹ The median waiting time is the middle value when all patients are ordered by length of wait. This is the preferred measure of the average waiting time, as it is less susceptible to extreme values than the mean.

4.6. Chart 7 shows the numbers of acute trusts with performance below 90% for admitted patients and 95% for non-admitted.

Chart 7 - Acute Providers with Performance Below the National Standards for 18 Weeks

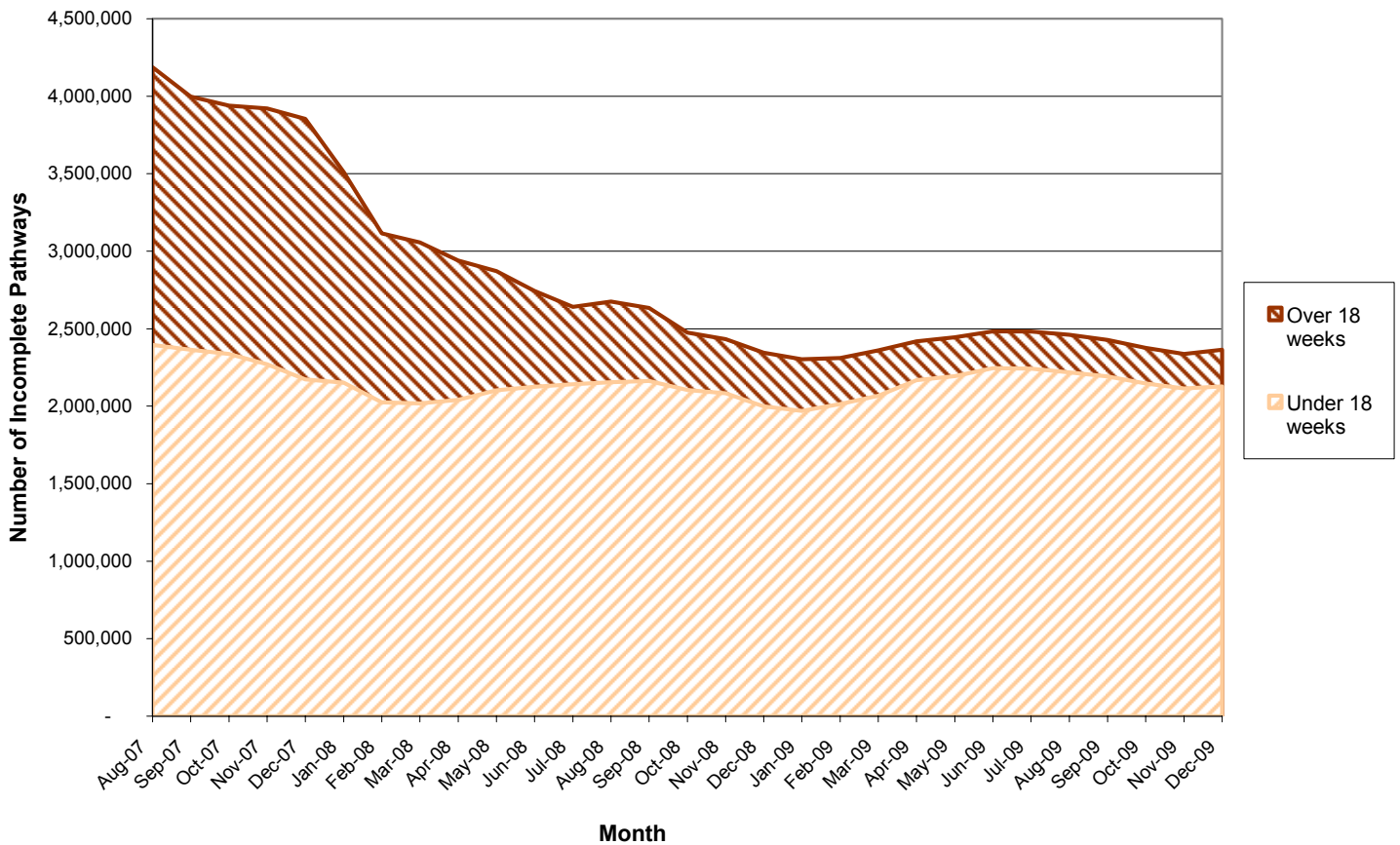


Note: Barts and the London NHS Trust submitted no 18 weeks RTT data between January and June 2009

4.7. Chart 7 shows that the number of acute trusts with admitted performance below the national standard (90%) increased from 4 in January 2009 to 18 in October and November 2009, before falling back to 15 in December 2009. In June 2009, only 1 trust fell below the non-admitted standard (95%), and in December 2009 there were 2 trusts falling below the standard.

4.8. Chart 8 shows the total number of patients on incomplete RTT pathways¹⁰ and, of these, the number who had been waiting less than 18 weeks:

Chart 8 - Incomplete RTT Pathways Over Time, England



4.9. The total number of incomplete pathways fell from just over 4 million at the end of August 2007 to around 2.4 million at the end of December 2009. Over the same period, the percentage of patients who had been waiting less than 18 weeks increased from 57% to 90%.

¹⁰ These are patients who were still awaiting treatment at the end of the month. Lengths of wait for incomplete pathways do not take into account adjustments (see section 2).

Annex A – Data Completeness

- An assessment of data completeness is made for each organisation by comparing the reported number of completed RTT periods with the expected number of completed RTT periods from other sources of activity data.
- Table 1: shows the national data completeness figures for 2009.

Table 1: RTT Data Completeness, January–December 2009

	Admitted Adjusted Pathways	Non-Admitted Pathways
Jan-09	98%	98%
Feb-09	98%	100%
Mar-09	99%	98%
Apr-09	98%	99%
May-09	97%	100%
Jun-09	99%	98%
Jul-09	98%	100%
Aug-09	97%	98%
Sep-09	101%	97%
Oct-09	98%	99%
Nov-09	99%	98%
Dec-09	96%	97%

- Table 1 shows how national data completeness has been consistently close to 100% throughout 2009. This shows that the activity reported has been broadly as expected, indicating a good level of data quality.
- Where data completeness is below 100%, this means that either the number of reported RTT pathways is too low and/or the expected number of pathways is too high. Where data completeness is greater than 100%, this means that either the number of reported RTT pathways is too high and/or the expected number of pathways is too low. DH works with NHS providers each month to ensure data completeness is accurately assessed and is as close to 100% as possible.
- Further details on the data completeness methodology can be found at: http://www.dh.gov.uk/en/Publicationsandstatistics/Statistics/Performanceandstatistics/18WeeksReferraltoTreatmentstatistics/DH_089757

Annex B – Detailed Tables

Notes:

1. All admitted data in the detailed tables below are presented on an adjusted basis, i.e. excluding legitimate pauses of patients' waiting times clocks.
2. Organisation-level performance figures (percentages completed within 18 weeks) are rounded to one decimal place for presentation. However, it should be noted that organisational performance is assessed based on unrounded figures.

Table 2 - Admitted (adjusted) and Non-admitted Performance by Strategic Health Authority

Strategic Health Authority	Admitted Patients				Non-admitted Patients			
	Dec-08		Dec-09		Dec-08		Dec-09	
	% of patients seen within 18 weeks	Average (median) waiting time (weeks)	% of patients seen within 18 weeks	Average (median) waiting time (weeks)	% of patients seen within 18 weeks	Average (median) waiting time (weeks)	% of patients seen within 18 weeks	Average (median) waiting time (weeks)
North East	93.4%	6.6	95.3%	7.1	96.8%	3.7	98.1%	3.6
North West	92.2%	7.4	92.6%	7.5	96.6%	4.2	97.4%	4.0
Yorkshire & Humber	92.9%	6.6	93.9%	6.5	97.2%	3.6	98.3%	3.7
East Midlands	94.9%	7.7	94.7%	7.5	97.7%	4.5	98.2%	4.7
West Midlands	93.2%	7.6	93.8%	7.7	96.7%	3.9	97.7%	4.0
East of England	92.1%	8.7	93.3%	8.5	97.4%	4.3	97.9%	4.5
London	90.9%	7.4	93.3%	7.7	96.8%	3.9	98.2%	4.0
South East Coast	90.7%	9.6	93.0%	9.4	96.9%	4.7	97.0%	5.2
South Central	92.8%	8.6	91.4%	8.9	97.6%	4.2	98.0%	4.2
South West	94.9%	7.0	92.2%	7.2	97.8%	3.8	97.9%	4.2
Other	100%	-	100.0%	-		-	82.5%	-
England	92.8%	7.6	93.3%	7.7	97.1%	4.1	97.9%	4.2

Table 3 – Admitted and Non-admitted Performance by Treatment Function

Treatment Function	Admitted Patients				Non-admitted Patients			
	Dec-08		Dec-09		Dec-08		Dec-09	
	% of patients seen within 18 weeks	Average (median) waiting time (weeks)	% of patients seen within 18 weeks	Average (median) waiting time (weeks)	% of patients seen within 18 weeks	Average (median) waiting time (weeks)	% of patients seen within 18 weeks	Average (median) waiting time (weeks)
Cardiology	95.61%	5.9	96.98%	5.2	97.38%	4.2	98.46%	4.3
Cardiothoracic Surgery	90.95%	7.7	93.20%	6.6	96.70%	4.4	96.81%	3.9
Dermatology	94.56%	7.1	96.20%	6.8	97.60%	5.9	98.35%	6.1
Ear, Nose & Throat	92.21%	8.2	91.82%	8.4	97.30%	4.5	97.74%	4.9
Gastroenterology	98.35%	3.8	98.97%	3.6	95.82%	5.4	96.80%	5.7
General Medicine	97.95%	3.4	99.06%	3.1	97.24%	3.9	98.04%	3.8
General Surgery	93.12%	7.4	93.31%	7.4	96.44%	4.0	97.13%	3.5
Geriatric Medicine	99.63%	0.8	99.15%	1.0	98.11%	3.7	99.00%	3.4
Gynaecology	95.84%	5.7	95.52%	6.1	97.75%	3.7	98.27%	3.7
Neurology	95.89%	3.7	98.38%	3.3	96.93%	5.6	97.27%	6.6
Neurosurgery	82.45%	9.3	85.45%	9.5	86.22%	7.8	92.31%	7.3
Ophthalmology	94.66%	8.8	94.58%	9.3	97.27%	4.5	98.13%	5.0
Oral Surgery	92.64%	9.5	92.18%	10.5	94.27%	5.5	96.63%	5.9
Plastic Surgery	92.96%	7.9	91.95%	7.5	97.14%	4.1	97.66%	4.3
Rheumatology	97.88%	3.4	98.70%	3.2	97.38%	5.3	98.37%	5.9
Thoracic Medicine	98.52%	2.9	98.77%	2.6	97.11%	4.4	98.28%	4.3
Trauma & Orthopaedics	86.28%	10.8	87.93%	10.9	95.50%	4.5	96.47%	4.8
Urology	94.70%	6.2	95.32%	6.2	95.92%	4.7	97.00%	4.9
Other	94.70%	5.3	95.15%	5.4	98.06%	2.3	98.64%	2.1
Total	92.78%	7.6	93.26%	7.7	97.06%	4.1	97.87%	4.2

Table 4 – Admitted and Non-admitted Performance by Commissioner (PCT)

PCT	Admitted Patients			Non-admitted Patients		
	Data completeness	% of patients seen within 18 weeks		Data completeness	% of patients seen within 18 weeks	
	Dec-09	Dec-08	Dec-09	Dec-09	Dec-08	Dec-09
England	95.6%	92.8%	93.3%	96.7%	97.1%	97.9%
<i>Ashton, Leigh And Wigan</i>	99%	92.8%	92.3%	101%	96.2%	96.7%
<i>Barking And Dagenham</i>	105%	87.4%	91.7%	103%	96.0%	98.5%
<i>Barnet</i>	107%	88.6%	95.1%	103%	95.6%	98.9%
<i>Barnsley</i>	100%	95.4%	95.1%	101%	98.0%	98.9%
<i>Bassetlaw</i>	102%	93.8%	95.8%	101%	98.2%	99.3%
<i>Bath & NE Somerset</i>	91%	95.2%	87.0%	100%	97.9%	98.2%
<i>Bedfordshire</i>	104%	88.3%	92.2%	101%	96.6%	97.5%
<i>Berkshire East</i>	100%	91.6%	92.0%	100%	97.1%	97.0%
<i>Berkshire West</i>	97%	93.7%	90.5%	100%	99.4%	99.4%
<i>Bexley Care</i>	107%	89.0%	95.4%	103%	94.8%	97.8%
<i>Birmingham East & North</i>	103%	91.2%	94.1%	102%	95.2%	97.2%
<i>Blackburn With Darwen</i>	99%	92.4%	91.6%	102%	97.4%	99.3%
<i>Blackpool</i>	104%	93.0%	96.3%	101%	96.6%	98.0%
<i>Bolton</i>	99%	92.1%	90.8%	100%	97.2%	96.9%
<i>Bournemouth And Poole</i>	100%	96.0%	95.6%	100%	98.7%	98.8%
<i>Bradford And Airedale</i>	101%	92.9%	94.0%	102%	96.0%	98.3%
<i>Brent Teaching</i>	100%	93.5%	93.2%	101%	97.7%	98.2%
<i>Brighton And Hove City</i>	101%	91.2%	92.2%	102%	96.3%	97.8%
<i>Bristol</i>	97%	93.4%	90.9%	99%	97.9%	97.1%
<i>Bromley</i>	115%	79.8%	92.1%	102%	94.0%	96.1%
<i>Buckinghamshire</i>	100%	92.1%	91.9%	99%	98.6%	98.0%
<i>Bury</i>	102%	88.9%	90.4%	101%	96.2%	96.7%
<i>Calderdale</i>	101%	93.2%	94.0%	100%	98.9%	99.2%
<i>Cambridgeshire</i>	99%	95.9%	94.8%	100%	98.8%	98.5%
<i>Camden</i>	111%	85.2%	94.8%	102%	96.3%	98.4%
<i>Central & E Cheshire</i>	102%	91.7%	93.4%	102%	96.2%	98.0%
<i>Central Lancashire</i>	103%	92.7%	95.6%	101%	95.6%	97.0%
<i>City & Hackney Teaching</i>	99%	94.4%	93.8%	102%	96.7%	98.3%
<i>Cornwall & Isles Of Scilly</i>	95%	93.6%	88.9%	101%	98.0%	98.7%
<i>County Durham</i>	102%	93.6%	95.0%	101%	97.0%	98.3%
<i>Coventry Teaching</i>	106%	90.7%	95.8%	101%	96.8%	98.1%
<i>Croydon</i>	99%	94.1%	93.0%	103%	96.1%	98.6%
<i>Cumbria</i>	102%	90.1%	92.0%	100%	96.6%	96.9%
<i>Darlington</i>	101%	94.6%	95.9%	101%	97.7%	98.3%
<i>Derby City</i>	101%	95.6%	96.3%	100%	98.7%	99.0%
<i>Derbyshire County</i>	101%	95.3%	96.0%	101%	97.7%	98.7%
<i>Devon</i>	99%	95.1%	94.6%	100%	97.5%	97.7%
<i>Doncaster</i>	100%	95.4%	95.1%	101%	98.5%	99.1%
<i>Dorset</i>	98%	95.2%	93.0%	100%	97.9%	98.1%
<i>Dudley</i>	103%	91.6%	94.7%	102%	97.3%	99.0%
<i>Ealing</i>	102%	94.4%	95.8%	101%	97.0%	98.4%
<i>E & N Hertfordshire</i>	102%	91.7%	93.6%	100%	96.4%	96.7%
<i>East Lancashire</i>	102%	91.6%	93.6%	101%	98.4%	99.3%
<i>East Riding Of Yorkshire</i>	101%	91.7%	92.5%	101%	96.7%	97.8%

	Admitted Patients			Non-admitted Patients		
	Data completeness	% of patients seen within 18 weeks		Data completeness	% of patients seen within 18 weeks	
<i>E Sussex Downs & Weald</i>	100%	90.8%	90.6%	98%	94.7%	92.4%
<i>Eastern And Coastal Kent</i>	107%	87.0%	92.7%	102%	96.9%	98.5%
<i>Enfield</i>	104%	91.6%	95.6%	102%	96.3%	98.1%
<i>Gateshead</i>	103%	93.6%	96.7%	103%	95.8%	98.3%
<i>Gloucestershire</i>	101%	90.3%	91.3%	101%	96.1%	96.8%
<i>Gt Yarmouth & Waveney</i>	99%	93.4%	92.3%	100%	97.0%	96.7%
<i>Greenwich Teaching</i>	117%	79.7%	93.2%	102%	96.8%	98.4%
<i>Halton And St Helens</i>	99%	93.6%	92.6%	102%	95.6%	97.2%
<i>Hammersmith & Fulham</i>	103%	93.1%	96.2%	101%	97.1%	98.3%
<i>Hampshire</i>	99%	92.6%	91.7%	101%	97.4%	98.0%
<i>Haringey Teaching</i>	104%	90.1%	93.4%	101%	97.3%	98.7%
<i>Harrow</i>	100%	93.4%	93.0%	101%	97.3%	98.0%
<i>Hartlepool</i>	104%	93.4%	96.7%	100%	99.0%	98.7%
<i>Hastings And Rother</i>	96%	93.0%	89.4%	97%	97.5%	94.3%
<i>Havering¹</i>	105%	88.8%	93.6%	102%	96.2%	98.2%
<i>Heart Of Birm Teaching</i>	97%	94.5%	91.2%	102%	95.6%	97.5%
<i>Herefordshire</i>	104%	93.7%	97.9%	101%	98.3%	99.2%
<i>Heywood, M'ton & Roch.</i>	105%	88.2%	92.7%	100%	96.8%	97.0%
<i>Hillingdon</i>	98%	97.6%	95.4%	100%	98.7%	98.8%
<i>Hounslow</i>	101%	93.6%	94.5%	100%	97.1%	97.5%
<i>Hull</i>	103%	90.8%	93.5%	102%	96.7%	98.5%
<i>Isle Of Wight Healthcare</i>	97%	95.1%	92.0%	102%	96.2%	98.4%
<i>Islington</i>	108%	87.0%	94.4%	102%	96.9%	98.8%
<i>Kensington And Chelsea</i>	100%	95.1%	94.8%	100%	98.8%	99.0%
<i>Kingston</i>	102%	90.2%	92.1%	101%	97.9%	99.0%
<i>Kirklees</i>	103%	92.2%	95.3%	101%	97.6%	98.8%
<i>Knowsley</i>	101%	93.3%	94.3%	101%	96.3%	97.7%
<i>Lambeth</i>	101%	92.0%	92.8%	102%	96.1%	97.8%
<i>Leeds</i>	102%	89.6%	91.2%	102%	96.3%	98.2%
<i>Leicester City</i>	99%	96.7%	95.4%	100%	98.1%	98.5%
<i>Leics Co. & Rutland</i>	99%	95.9%	95.0%	100%	98.3%	98.5%
<i>Lewisham</i>	104%	91.2%	94.4%	101%	96.6%	97.2%
<i>Lincolnshire</i>	98%	92.1%	89.8%	101%	96.0%	96.9%
<i>Liverpool</i>	101%	94.2%	95.5%	102%	96.4%	98.2%
<i>Luton</i>	110%	83.4%	92.0%	101%	95.9%	96.9%
<i>Manchester</i>	97%	89.8%	86.9%	100%	97.2%	97.3%
<i>Medway</i>	99%	95.7%	95.2%	99%	96.9%	96.2%
<i>Mid Essex</i>	103%	92.2%	94.9%	101%	98.6%	99.4%
<i>Middlesbrough</i>	100%	93.9%	93.5%	99%	98.9%	98.4%
<i>Milton Keynes</i>	98%	95.9%	93.7%	99%	98.7%	97.9%
<i>Newcastle</i>	105%	90.2%	94.8%	103%	95.3%	97.7%
<i>Newham</i>	101%	91.9%	92.5%	101%	96.4%	97.6%
<i>Norfolk</i>	101%	91.0%	91.6%	102%	96.4%	98.4%
<i>North East Essex</i>	102%	90.7%	92.2%	102%	94.5%	96.6%
<i>North East Lincolnshire</i>	100%	98.8%	98.6%	101%	98.3%	98.8%
<i>North Lancashire</i>	102%	92.4%	94.6%	100%	96.5%	97.0%
<i>North Lincolnshire</i>	101%	97.4%	98.1%	100%	97.7%	97.7%
<i>North Somerset</i>	97%	96.0%	92.9%	100%	98.1%	98.0%
<i>North Staffordshire</i>	100%	92.4%	92.2%	101%	96.3%	97.2%

	Admitted Patients			Non-admitted Patients		
	Data completeness	% of patients seen within 18 weeks		Data completeness	% of patients seen within 18 weeks	
<i>North Tyneside</i>	104%	91.6%	94.9%	102%	95.1%	97.2%
<i>North Yorkshire And York</i>	100%	92.3%	92.4%	100%	97.8%	97.7%
<i>Northamptonshire</i>	100%	95.4%	95.0%	100%	97.4%	97.3%
<i>Northumberland Care</i>	102%	93.4%	95.5%	101%	96.3%	97.2%
<i>Nottingham City</i>	102%	95.9%	97.5%	101%	98.7%	99.2%
<i>Nottinghamshire County</i>	101%	95.4%	96.3%	101%	98.2%	98.7%
<i>Oldham</i>	101%	90.5%	91.8%	101%	96.1%	97.2%
<i>Oxfordshire</i>	94%	94.0%	88.5%	101%	96.7%	97.5%
<i>Peterborough</i>	95%	95.8%	90.6%	99%	99.3%	97.9%
<i>Plymouth Teaching</i>	99%	96.6%	95.9%	99%	98.8%	98.1%
<i>Portsmouth City Teaching</i>	94%	93.3%	87.9%	101%	97.5%	98.3%
<i>Redbridge</i>	103%	91.2%	93.5%	101%	96.7%	98.1%
<i>Redcar And Cleveland</i>	99%	94.4%	93.2%	100%	98.7%	98.8%
<i>Richmond & Twickenham</i>	101%	92.8%	93.4%	101%	97.8%	98.8%
<i>Rotherham</i>	103%	94.9%	97.9%	101%	98.2%	99.0%
<i>Salford</i>	104%	89.2%	93.0%	101%	97.0%	97.9%
<i>Sandwell</i>	100%	94.1%	93.7%	101%	96.5%	97.8%
<i>Sefton</i>	101%	94.2%	94.8%	103%	96.0%	98.6%
<i>Sheffield</i>	98%	94.8%	92.5%	101%	96.2%	97.4%
<i>Shropshire County</i>	100%	93.0%	92.7%	100%	97.0%	96.5%
<i>Solihull Care</i>	103%	92.0%	94.3%	101%	95.3%	96.0%
<i>Somerset</i>	93%	95.4%	88.3%	100%	97.5%	97.4%
<i>South Birmingham</i>	101%	93.0%	94.2%	102%	96.0%	97.9%
<i>South East Essex</i>	100%	94.9%	94.9%	101%	97.9%	98.8%
<i>South Gloucestershire</i>	97%	94.8%	92.0%	101%	97.4%	98.3%
<i>South Staffordshire</i>	100%	96.2%	96.1%	101%	97.9%	98.8%
<i>South Tyneside</i>	102%	95.0%	97.2%	102%	96.7%	99.0%
<i>South West Essex</i>	101%	93.6%	94.9%	99%	97.6%	97.1%
<i>Southampton City</i>	105%	88.9%	93.6%	101%	96.9%	98.2%
<i>Southwark</i>	103%	90.0%	92.5%	102%	95.8%	97.8%
<i>Stockport</i>	95%	93.4%	88.7%	100%	96.2%	96.4%
<i>Stockton-on-Tees Teaching</i>	98%	96.3%	94.0%	100%	98.3%	98.6%
<i>Stoke On Trent</i>	98%	92.9%	91.4%	100%	97.0%	96.7%
<i>Suffolk</i>	100%	94.4%	94.6%	100%	97.4%	97.8%
<i>Sunderland Teaching</i>	104%	92.7%	96.4%	101%	96.9%	98.1%
<i>Surrey</i>	103%	91.9%	94.6%	101%	97.5%	98.2%
<i>Sutton And Merton</i>	96%	93.8%	90.2%	101%	96.6%	97.9%
<i>Swindon</i>	96%	99.2%	94.9%	98%	99.6%	97.8%
<i>Tameside And Glossop</i>	98%	94.8%	93.1%	101%	95.2%	96.3%
<i>Telford And Wrekin</i>	98%	91.6%	89.9%	98%	97.6%	95.7%
<i>Torbay Care</i>	98%	96.9%	94.9%	101%	97.8%	98.3%
<i>Tower Hamlets</i>	92%	92.5%	85.1%	104%	92.4%	96.3%
<i>Trafford</i>	95%	92.8%	88.3%	100%	96.5%	96.1%
<i>Wakefield District</i>	104%	92.1%	95.6%	102%	96.7%	98.5%
<i>Walsall Teaching</i>	97%	97.1%	93.9%	102%	96.5%	98.8%
<i>Waltham Forest</i>	100%	94.2%	93.9%	101%	97.8%	98.9%
<i>Wandsworth</i>	92%	94.5%	87.0%	100%	98.3%	98.0%
<i>Warrington</i>	98%	96.4%	94.3%	102%	96.7%	98.2%
<i>Warwickshire</i>	104%	89.4%	93.4%	100%	97.1%	97.3%

	Admitted Patients			Non-admitted Patients		
	Data completeness	% of patients seen within 18 weeks		Data completeness	% of patients seen within 18 weeks	
<i>West Essex</i>	101%	91.5%	92.0%	100%	97.1%	97.5%
<i>West Hertfordshire</i>	103%	90.5%	93.5%	100%	98.4%	98.5%
<i>West Kent</i>	102%	91.2%	93.0%	101%	96.0%	96.9%
<i>West Sussex</i>	103%	90.1%	92.6%	99%	97.6%	96.7%
<i>Western Cheshire</i>	98%	94.4%	92.6%	99%	98.1%	97.3%
<i>Westminster</i>	100%	93.9%	93.5%	100%	98.5%	98.9%
<i>Wiltshire</i>	97%	95.9%	92.7%	101%	97.3%	98.4%
<i>Wirral</i>	102%	90.5%	92.2%	99%	98.2%	97.3%
<i>Wolverhampton City</i>	94%	96.8%	91.0%	99%	97.4%	96.9%
<i>Worcestershire</i>	99%	94.6%	93.9%	102%	96.7%	98.4%
<i>National Commissioning Group</i>	100%	100.0%	100.0%	-	0.0%	82.5%

Table 5 – Admitted and Non-admitted Performance by Provider

Provider	Admitted Patients			Non-admitted Patients		
	Data completeness	% of patients seen within 18 weeks		Data completeness	% of patients seen within 18 weeks	
	Dec-09	Dec-08	Dec-09	Dec-09	Dec-08	Dec-09
<i>Aintree University Hospitals NHS Foundation Trust</i>	93.7%	96.1%	94.2%	100.4%	96.0%	98.7%
<i>Airedale NHS Trust</i>	97.4%	92.0%	93.0%	91.0%	96.4%	98.0%
<i>Alder Hey Children's NHS Foundation Trust</i>	92.5%	90.3%	90.3%	94.5%	96.4%	98.0%
<i>Ashford and St Peter's Hospitals NHS Trust</i>	89.8%	93.1%	92.7%	95.2%	96.9%	98.2%
<i>Barking, Havering and Redbridge University Hospitals NHS Trust</i>	100.7%	86.7%	91.7%	90.6%	96.1%	98.5%
<i>Barnet and Chase Farm Hospitals NHS Trust</i>	98.9%	95.0%	95.1%	103.6%	97.8%	99.1%
<i>Barnsley Hospital NHS Foundation Trust</i>	87.5%	98.5%	99.4%	101.0%	99.1%	99.2%
<i>Barts and The London NHS Trust</i>	93.2%	92.4%	85.0%	82.4%	91.8%	95.2%
<i>Basildon and Thurrock University Hospitals NHS Foundation Trust</i>	85.2%	95.5%	94.4%	99.4%	96.7%	95.1%
<i>Basingstoke and North Hampshire NHS Foundation Trust</i>	100.0%	93.6%	92.2%	92.3%	98.8%	98.2%
<i>Bedford Hospital NHS Trust</i>	93.5%	89.8%	92.8%	109.5%	97.1%	98.0%
<i>Birmingham Children's Hospital NHS Foundation Trust</i>	99.6%	98.9%	95.0%	108.8%	98.8%	99.6%
<i>Birmingham Women's NHS Foundation Trust</i>	97.7%	95.4%	93.9%	107.0%	95.0%	97.0%
<i>Blackpool, Fylde and Wyre Hospitals NHS Foundation Trust</i>	99.2%	91.5%	97.0%	92.5%	95.5%	97.6%
<i>Bradford Teaching Hospitals NHS Foundation Trust</i>	88.8%	91.0%	94.1%	92.0%	95.1%	98.3%
<i>Brighton and Sussex University Hospitals NHS Trust</i>	97.2%	95.7%	94.2%	92.5%	96.0%	97.8%
<i>Buckinghamshire Hospitals NHS Trust</i>	94.9%	90.4%	91.3%	93.5%	98.8%	98.3%
<i>Burton Hospitals NHS Foundation Trust</i>	96.2%	94.5%	95.3%	100.2%	98.5%	99.8%
<i>Calderdale and Huddersfield NHS Foundation Trust</i>	86.7%	94.2%	95.6%	96.8%	98.9%	99.4%
<i>Cambridge University Hospitals NHS Foundation Trust</i>	101.3%	95.9%	92.9%	102.5%	98.4%	97.3%
<i>Central Manchester University Hospitals NHS Foundation Trust</i>	87.7%	90.7%	91.7%	101.7%	97.3%	97.9%
<i>Chelsea and Westminster Hospital NHS Foundation Trust</i>	90.4%	90.6%	94.9%	93.5%	98.7%	98.8%
<i>Chesterfield Royal Hospital NHS Foundation Trust</i>	90.3%	97.3%	99.2%	94.9%	97.5%	99.9%
<i>City Hospitals Sunderland NHS Foundation Trust</i>	98.0%	92.1%	96.6%	90.0%	97.1%	98.0%
<i>Clatterbridge Centre for Oncology NHS Foundation Trust</i>	80.4%	99.1%	98.8%	98.4%	98.3%	100.0%
<i>Colchester Hospital University NHS Foundation Trust</i>	94.6%	89.3%	91.1%	101.2%	95.1%	96.5%
<i>Countess of Chester Hospital NHS Foundation Trust</i>	94.8%	94.2%	91.2%	98.3%	98.1%	97.5%

Provider	Admitted Patients			Non-admitted Patients		
	Data completeness	% of patients seen within 18 weeks		Data completeness	% of patients seen within 18 weeks	
	Dec-09	Dec-08	Dec-09	Dec-09	Dec-08	Dec-09
County Durham and Darlington NHS Foundation Trust	94.6%	95.0%	94.5%	100.8%	98.7%	98.7%
Dartford and Gravesham NHS Trust	92.0%	94.4%	92.8%	99.5%	96.4%	98.2%
Derby Hospitals NHS Foundation Trust	93.5%	94.0%	95.7%	101.7%	98.4%	99.0%
Doncaster and Bassetlaw Hospitals NHS Foundation Trust	99.4%	94.9%	95.9%	90.4%	98.9%	99.2%
Dorset County Hospital NHS Foundation Trust	103.6%	93.4%	90.8%	103.0%	97.3%	97.9%
Ealing Hospital NHS Trust	91.2%	95.2%	96.5%	109.6%	96.7%	98.7%
East and North Hertfordshire NHS Trust	98.4%	90.0%	93.1%	93.9%	96.4%	96.0%
East Cheshire NHS Trust	91.9%	90.8%	96.5%	96.7%	95.7%	98.5%
East Kent Hospitals University NHS Foundation Trust	94.8%	86.1%	92.5%	95.6%	97.1%	98.9%
East Lancashire Hospitals NHS Trust	104.6%	91.6%	92.3%	109.2%	99.0%	99.9%
East Sussex Hospitals NHS Trust	107.9%	90.7%	88.2%	85.4%	96.1%	91.9%
Epsom and St Helier University Hospitals NHS Trust	102.6%	92.8%	94.6%	90.8%	95.7%	97.9%
Frimley Park Hospital NHS Foundation Trust	95.6%	88.3%	92.6%	92.4%	95.8%	96.6%
Gateshead Health NHS Foundation Trust	92.1%	95.1%	98.4%	98.3%	98.3%	99.0%
George Eliot Hospital NHS Trust	82.0%	89.1%	88.7%	72.1%	96.9%	96.1%
Gloucestershire Hospitals NHS Foundation Trust	91.8%	90.0%	90.8%	82.8%	95.2%	96.3%
Great Ormond Street Hospital for Children NHS Trust	106.6%	89.1%	96.2%	89.8%	90.8%	96.0%
Great Western Hospitals NHS Foundation Trust	92.4%	99.9%	94.6%	91.0%	99.7%	98.2%
Guy's and St Thomas' NHS Foundation Trust	92.1%	88.9%	90.4%	95.4%	94.7%	96.7%
Harrogate and District NHS Foundation Trust	90.1%	96.0%	94.8%	95.6%	98.5%	97.9%
Heart of England NHS Foundation Trust	116.1%	91.3%	93.8%	70.0%	95.3%	96.2%
Heatherwood and Wexham Park Hospitals NHS Foundation Trust	103.5%	90.8%	90.1%	99.6%	95.9%	95.5%
Hereford Hospitals NHS Trust	116.3%	93.9%	98.5%	103.8%	98.6%	99.3%
Hinchingbrooke Health Care NHS Trust	100.1%	96.0%	98.9%	98.8%	99.6%	99.5%
Homerton University Hospital NHS Foundation Trust	89.8%	98.1%	97.8%	90.1%	99.1%	99.1%
Hull and East Yorkshire Hospitals NHS Trust	99.3%	90.5%	92.3%	108.7%	95.5%	98.3%
Imperial College Healthcare NHS Trust	91.0%	95.7%	94.9%	91.7%	97.4%	98.3%
Ipswich Hospital NHS Trust	85.2%	93.3%	90.8%	96.2%	96.6%	96.5%
Isle of Wight NHS Pct	99.3%	97.0%	93.5%	90.9%	96.3%	98.5%
James Paget University Hospitals NHS Foundation Trust	101.5%	93.3%	92.2%	95.3%	97.6%	96.9%
Kettering General Hospital NHS Foundation Trust	102.7%	99.3%	93.7%	98.4%	96.7%	96.3%
King's College Hospital NHS	94.1%	92.1%	96.2%	86.7%	96.2%	98.6%

Provider	Admitted Patients			Non-admitted Patients		
	Data completeness	% of patients seen within 18 weeks		Data completeness	% of patients seen within 18 weeks	
	Dec-09	Dec-08	Dec-09	Dec-09	Dec-08	Dec-09
<i>Foundation Trust</i>						
<i>Kingston Hospital NHS Trust</i>	112.6%	89.8%	91.3%	77.5%	98.6%	99.8%
<i>Lancashire Teaching Hospitals NHS Foundation Trust</i>	84.9%	92.1%	94.6%	95.2%	95.2%	96.7%
<i>Leeds Teaching Hospitals NHS Trust</i>	93.0%	90.2%	89.8%	90.4%	95.6%	97.7%
<i>Liverpool Heart and Chest NHS Foundation Trust</i>	94.8%	95.0%	95.4%	94.0%	96.9%	98.0%
<i>Liverpool Women's NHS Foundation Trust</i>	100.5%	91.0%	99.2%	94.3%	95.0%	97.7%
<i>Luton and Dunstable Hospital NHS Foundation Trust</i>	100.0%	82.6%	91.5%	95.4%	95.4%	96.7%
<i>Maidstone and Tunbridge Wells NHS Trust</i>	99.6%	90.6%	92.1%	101.2%	95.4%	95.9%
<i>Mayday Healthcare NHS Trust</i>	84.9%	95.4%	92.3%	98.8%	95.7%	98.9%
<i>Medway NHS Foundation Trust</i>	104.6%	96.4%	95.8%	94.0%	97.9%	98.9%
<i>Mid Cheshire Hospitals NHS Foundation Trust</i>	88.8%	90.2%	93.5%	95.1%	97.0%	97.9%
<i>Mid Essex Hospital Services NHS Trust</i>	94.0%	91.3%	94.8%	107.1%	98.6%	99.6%
<i>Mid Staffordshire NHS Foundation Trust</i>	99.4%	98.8%	98.7%	113.7%	99.0%	99.8%
<i>Mid Yorkshire Hospitals NHS Trust</i>	108.2%	91.4%	95.9%	93.5%	96.4%	98.7%
<i>Milton Keynes Hospital NHS Foundation Trust</i>	103.2%	96.6%	92.6%	103.9%	99.4%	98.7%
<i>Moorfields Eye Hospital NHS Foundation Trust</i>	100.4%	93.4%	94.1%	93.2%	96.5%	98.1%
<i>Newham University Hospital NHS Trust</i>	110.6%	93.3%	95.8%	95.8%	97.8%	98.8%
<i>Norfolk and Norwich University Hospitals NHS Foundation Trust</i>	95.0%	91.4%	91.4%	93.9%	95.9%	98.5%
<i>North Bristol NHS Trust</i>	96.9%	94.5%	92.9%	87.9%	96.8%	98.0%
<i>North Cumbria University Hospitals NHS Trust</i>	90.6%	89.2%	90.2%	101.0%	96.3%	96.5%
<i>North Middlesex University Hospital NHS Trust</i>	92.5%	90.6%	93.9%	99.2%	94.9%	97.8%
<i>North Tees and Hartlepool NHS Foundation Trust</i>	93.0%	93.4%	95.0%	97.5%	98.3%	98.1%
<i>North West London Hospitals NHS Trust</i>	98.3%	95.2%	94.3%	101.7%	97.8%	98.2%
<i>Northampton General Hospital NHS Trust</i>	90.3%	92.9%	96.1%	92.2%	98.1%	97.9%
<i>Northern Devon Healthcare NHS Trust</i>	93.4%	94.9%	97.1%	91.5%	99.5%	99.5%
<i>Northern Lincolnshire and Goole Hospitals NHS Foundation Trust</i>	89.7%	99.2%	99.7%	93.5%	98.2%	98.2%
<i>Northumbria Healthcare NHS Foundation Trust</i>	107.7%	92.7%	95.1%	108.3%	97.0%	96.9%
<i>Nottingham University Hospitals NHS Trust</i>	85.3%	95.9%	97.0%	91.6%	98.8%	99.0%
<i>Nuffield Orthopaedic Centre NHS Trust</i>	90.5%	95.1%	93.7%	88.2%	97.2%	97.5%
<i>Oxford Radcliffe Hospitals NHS Trust</i>	43.7%	95.4%	84.9%	95.8%	96.8%	96.8%
<i>Papworth Hospital NHS Foundation Trust</i>	103.7%	94.3%	97.0%	103.8%	95.9%	95.2%

Provider	Admitted Patients			Non-admitted Patients		
	Data completeness	% of patients seen within 18 weeks		Data completeness	% of patients seen within 18 weeks	
	Dec-09	Dec-08	Dec-09	Dec-09	Dec-08	Dec-09
<i>Pennine Acute Hospitals NHS Trust</i>	92.9%	89.0%	91.4%	102.0%	95.9%	97.0%
<i>Peterborough and Stamford Hospitals NHS Foundation Trust</i>	100.0%	95.3%	88.7%	107.3%	96.0%	97.7%
<i>Plymouth Hospitals NHS Trust</i>	99.1%	96.6%	95.3%	105.5%	98.4%	97.9%
<i>Poole Hospital NHS Foundation Trust</i>	100.4%	97.3%	97.8%	81.8%	99.0%	99.0%
<i>Portsmouth Hospitals NHS Trust</i>	97.4%	92.4%	85.9%	111.7%	97.2%	98.3%
<i>Queen Victoria Hospital NHS Foundation Trust</i>	97.8%	96.0%	95.6%	99.0%	98.2%	97.2%
<i>Robert Jones and Agnes Hunt Orthopaedic and District Hospital NHS Trust</i>	92.9%	95.7%	95.2%	108.3%	95.9%	98.9%
<i>Royal Berkshire NHS Foundation Trust</i>	89.6%	94.7%	92.3%	98.1%	99.8%	99.8%
<i>Royal Bolton Hospital NHS Foundation Trust</i>	104.9%	93.4%	90.7%	106.2%	96.9%	96.3%
<i>Royal Brompton and Harefield NHS Foundation Trust</i>	105.7%	98.4%	96.8%	98.0%	98.3%	99.4%
<i>Royal Cornwall Hospitals NHS Trust</i>	88.4%	91.3%	84.4%	100.4%	98.0%	98.9%
<i>Royal Devon and Exeter NHS Foundation Trust</i>	104.2%	93.4%	93.3%	109.2%	96.5%	96.3%
<i>Royal Free Hampstead NHS Trust</i>	92.7%	78.2%	94.8%	108.6%	93.5%	98.6%
<i>Royal Liverpool and Broadgreen University Hospitals NHS Trust</i>	85.9%	94.0%	95.8%	92.3%	96.5%	98.0%
<i>Royal National Hospital for Rheumatic Diseases NHS Foundation Trust</i>	100.0%	100.0%	100.0%	96.2%	99.7%	99.5%
<i>Royal National Orthopaedic Hospital NHS Trust</i>	99.1%	77.8%	86.7%	99.1%	83.9%	91.0%
<i>Royal Surrey County NHS Foundation Trust</i>	92.9%	92.5%	98.4%	94.3%	97.9%	98.8%
<i>Royal United Hospital Bath NHS Trust</i>	84.0%	95.5%	81.8%	96.6%	97.6%	97.8%
<i>Salford Royal NHS Foundation Trust</i>	100.2%	89.1%	91.5%	104.1%	95.2%	96.8%
<i>Salisbury NHS Foundation Trust</i>	91.5%	94.4%	95.8%	100.0%	95.4%	98.7%
<i>Sandwell and West Birmingham Hospitals NHS Trust</i>	99.7%	94.4%	93.1%	90.9%	96.8%	96.8%
<i>Scarborough and North East Yorkshire Health Care NHS Trust</i>	95.6%	92.3%	90.9%	142.3%	97.2%	97.0%
<i>Sheffield Children's NHS Foundation Trust</i>	101.2%	93.5%	95.2%	106.1%	96.8%	96.8%
<i>Sheffield Teaching Hospitals NHS Foundation Trust</i>	64.9%	93.5%	91.2%	119.1%	96.2%	97.8%
<i>Sherwood forest Hospitals NHS Foundation Trust</i>	99.5%	95.7%	94.7%	100.5%	97.8%	98.2%
<i>Shrewsbury and Telford Hospital NHS Trust</i>	107.7%	91.6%	90.5%	91.6%	97.6%	95.2%
<i>South Devon Healthcare NHS Foundation Trust</i>	92.8%	97.5%	94.4%	94.7%	97.4%	98.6%
<i>South London Healthcare NHS Trust</i>	87.5%	N/A	93.2%	92.1%	N/A	97.1%
<i>South Tees Hospitals NHS Foundation Trust</i>	88.2%	94.8%	92.8%	111.7%	98.4%	98.5%
<i>South Tyneside NHS Foundation Trust</i>	97.3%	96.3%	99.2%	90.1%	98.4%	99.7%
<i>South Warwickshire General Hospitals</i>	99.9%	85.0%	92.3%	107.9%	97.6%	97.5%

Provider	Admitted Patients			Non-admitted Patients		
	Data completeness	% of patients seen within 18 weeks		Data completeness	% of patients seen within 18 weeks	
	Dec-09	Dec-08	Dec-09	Dec-09	Dec-08	Dec-09
<i>NHS Trust</i>						
<i>Southampton University Hospitals NHS Trust</i>	94.4%	90.2%	91.5%	108.2%	96.7%	96.6%
<i>Southend University Hospital NHS Foundation Trust</i>	98.0%	96.2%	94.6%	96.2%	99.0%	99.5%
<i>Southport and Ormskirk Hospital NHS Trust</i>	77.5%	93.0%	94.8%	90.5%	95.6%	97.6%
<i>St George's Healthcare NHS Trust</i>	105.9%	96.8%	81.9%	105.6%	98.9%	97.8%
<i>St Helens and Knowsley Hospitals NHS Trust</i>	102.1%	90.2%	91.7%	102.5%	95.0%	96.8%
<i>Stockport NHS Foundation Trust</i>	98.4%	94.5%	90.5%	98.8%	95.7%	95.7%
<i>Surrey and Sussex Healthcare NHS Trust</i>	103.8%	89.9%	91.5%	73.1%	97.6%	96.5%
<i>Tameside Hospital NHS Foundation Trust</i>	95.3%	94.7%	94.5%	89.5%	95.0%	95.8%
<i>Taunton and Somerset NHS Foundation Trust</i>	103.7%	94.3%	88.8%	95.7%	97.6%	97.6%
<i>The Christie NHS Foundation Trust</i>	94.7%	97.7%	98.1%	109.9%	98.4%	97.8%
<i>The Dudley Group of Hospitals NHS Foundation Trust</i>	91.4%	90.5%	95.4%	101.8%	97.0%	99.5%
<i>The Hillingdon Hospital NHS Trust</i>	90.6%	99.6%	96.5%	90.7%	99.0%	99.1%
<i>The Lewisham Hospital NHS Trust</i>	97.8%	92.1%	95.7%	91.2%	98.3%	98.8%
<i>The Newcastle Upon Tyne Hospitals NHS Foundation Trust</i>	95.0%	91.1%	94.7%	105.5%	92.6%	96.9%
<i>The Princess Alexandra Hospital NHS Trust</i>	99.1%	89.8%	90.4%	102.5%	96.5%	95.8%
<i>The Queen Elizabeth Hospital King's Lynn NHS Trust</i>	98.7%	92.1%	93.6%	90.0%	97.0%	99.2%
<i>The Rotherham NHS Foundation Trust</i>	100.8%	94.2%	97.1%	107.9%	97.7%	99.0%
<i>The Royal Bournemouth and Christchurch Hospitals NHS Foundation Trust</i>	102.9%	96.0%	95.4%	90.8%	99.0%	99.5%
<i>The Royal Marsden NHS Foundation Trust</i>	91.9%	96.5%	95.0%	95.2%	97.5%	98.7%
<i>The Royal Orthopaedic Hospital NHS Foundation Trust</i>	90.6%	92.0%	91.6%	94.9%	91.8%	96.2%
<i>The Royal Wolverhampton Hospitals NHS Trust</i>	101.4%	97.7%	91.0%	102.8%	97.8%	97.0%
<i>The Walton Centre NHS Foundation Trust</i>	104.1%	94.2%	93.7%	92.8%	97.4%	98.3%
<i>The Whittington Hospital NHS Trust</i>	94.3%	90.9%	93.2%	100.5%	96.2%	98.7%
<i>Trafford Healthcare NHS Trust</i>	95.3%	94.8%	95.7%	103.7%	98.2%	96.9%
<i>United Lincolnshire Hospitals NHS Trust</i>	93.5%	90.4%	87.0%	102.5%	95.1%	96.3%
<i>University College London Hospitals NHS Foundation Trust</i>	93.9%	92.8%	95.2%	90.7%	95.4%	96.9%
<i>University Hospital Birmingham NHS Foundation Trust</i>	95.9%	93.1%	93.9%	98.0%	95.4%	97.9%
<i>University Hospital of North Staffordshire NHS Trust</i>	98.9%	91.5%	91.2%	99.8%	96.9%	96.8%

Provider	Admitted Patients			Non-admitted Patients		
	Data completeness	% of patients seen within 18 weeks		Data completeness	% of patients seen within 18 weeks	
	Dec-09	Dec-08	Dec-09	Dec-09	Dec-08	Dec-09
<i>University Hospital of South Manchester NHS Foundation Trust</i>	102.4%	90.1%	81.1%	94.9%	95.0%	95.3%
<i>University Hospitals Bristol NHS Foundation Trust</i>	94.9%	93.8%	90.3%	90.8%	98.0%	96.8%
<i>University Hospitals Coventry and Warwickshire NHS Trust</i>	95.3%	91.2%	96.1%	89.6%	96.2%	97.8%
<i>University Hospitals of Leicester NHS Trust</i>	92.5%	96.3%	94.8%	106.5%	98.1%	98.4%
<i>University Hospitals of Morecambe Bay NHS Trust</i>	95.7%	94.3%	93.2%	104.1%	97.6%	97.3%
<i>Walsall Hospitals NHS Trust</i>	92.4%	98.1%	94.0%	92.0%	96.7%	99.0%
<i>Warrington and Halton Hospitals NHS Foundation Trust</i>	99.3%	97.1%	92.2%	93.3%	96.9%	98.5%
<i>West Hertfordshire Hospitals NHS Trust</i>	90.4%	90.2%	92.6%	90.0%	99.3%	98.5%
<i>West Middlesex University Hospital NHS Trust</i>	98.9%	91.9%	94.1%	93.8%	97.7%	97.8%
<i>West Suffolk Hospitals NHS Trust</i>	96.0%	95.8%	99.8%	87.4%	97.9%	99.9%
<i>Western Sussex Hospitals NHS Trust</i>	116.4%	N/A	91.4%	78.6%	N/A	96.5%
<i>Weston Area Health NHS Trust</i>	99.8%	97.6%	95.1%	67.7%	99.3%	98.8%
<i>Whipps Cross University Hospital NHS Trust</i>	92.0%	95.3%	95.3%	107.5%	99.0%	98.2%
<i>Winchester and Eastleigh Healthcare NHS Trust</i>	85.0%	93.3%	90.7%	96.5%	97.8%	97.4%
<i>Wirral University Teaching Hospital NHS Foundation Trust</i>	99.5%	88.5%	91.5%	95.1%	98.7%	97.1%
<i>Worcestershire Acute Hospitals NHS Trust</i>	98.2%	93.9%	93.9%	99.7%	96.7%	98.6%
<i>Wrightington, Wigan and Leigh NHS Foundation Trust</i>	102.3%	93.2%	92.4%	96.3%	95.6%	96.3%
<i>Yeovil District Hospital NHS Foundation Trust</i>	87.4%	95.7%	79.2%	106.2%	97.3%	96.1%
<i>York Hospitals NHS Foundation Trust</i>	101.7%	90.0%	91.2%	96.6%	97.4%	97.4%