

## CYNWYL GAEO WARD: ELECTORAL DIVISION PROFILE

Policy Research and Information Section, Carmarthenshire County Council, May 2012

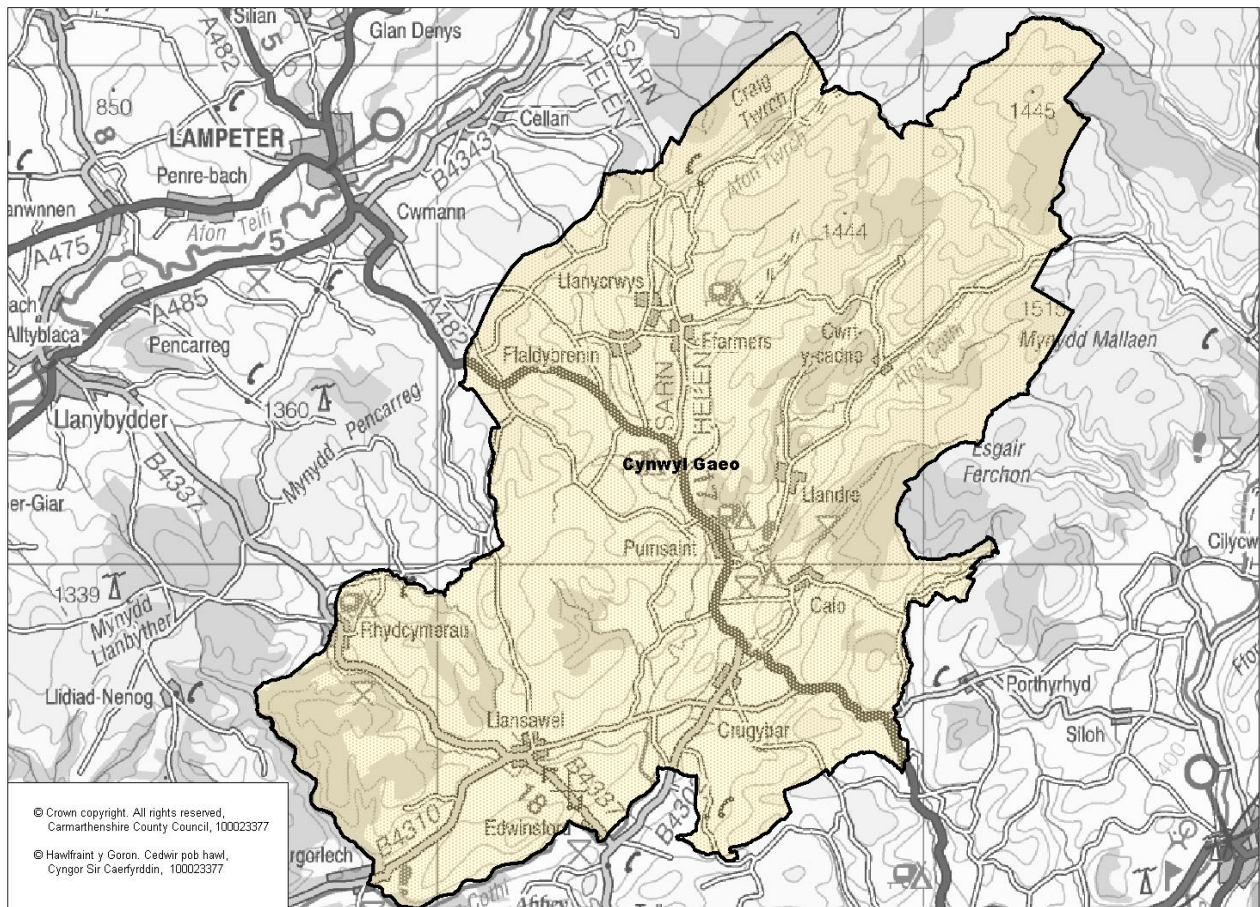
**Councillors (Electoral Vote 2012):** Eirwyn Williams (Plaid Cymru). Turnout = 48.27%

**Electorate (October 2011):** 1302

**Population:** 1,609 (mid -2010 Estimate)

**Welsh Assembly and UK Parliamentary Constituency:** Carmarthenshire East & Dinefwr

**Council owned Facilities:** Llansawel C.P. School, Cao C.P. School, Ysgol Carreg Hirfaen, Edwinsford Picnic Site, Talley



**Location: Approximately 50.7 km from Carmarthen Town**

- ⇒ Regeneration Designations: Rural Development Plan 2007-2013 eligible ward
- ⇒ Area: 162.30km<sup>2</sup>
- ⇒ Population Density: 10 people per km<sup>2</sup>
- ⇒ Population Change: 2001-2010: +58 (+3.6%)
- ⇒ Major Employers: Carmarthenshire County Council (schools and leisure)

## POPULATION STATISTICS

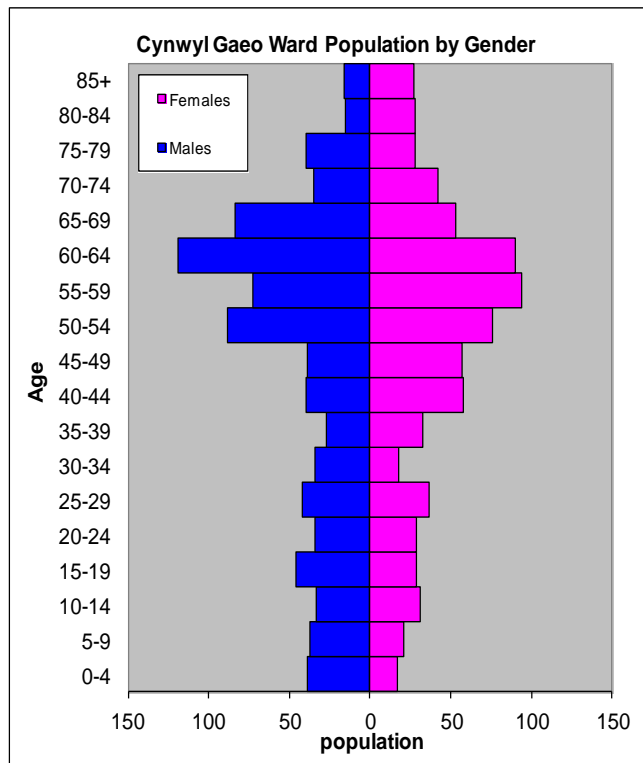
### 2010 Small Area Population Estimates

Age Structure	Cynwyl Gaeo Population	Cynwyl Gaeo %	Carmarthenshire %
Aged: 0-4	53	3.4	5.4
5-14	130	8.2	11.2
15-24	140	8.9	11.8
25-44	271	17.2	22.3
45-64	638	40.4	28.3
65-74	206	13.1	11.2
75+	140	8.9	11.5
<b>Total</b>	<b>1,609</b>	<b>100</b>	<b>100</b>

Births & Deaths	Cynwyl Gaeo	Carmarthenshire
Birth (2010)	13	1,963
Births Rate	8.2	10.9
Deaths (2010)	9	2077
Death Rate	5.7	11.5

Source: Vital Statistics 2010, ONS.

Note: birth/death rates expressed per '000 population.



Source: aggregated lower Super Output Area (LSOA) Small Area Population Estimates, 2010, Office for National Statistics (ONS)

- ⇒ 2<sup>nd</sup> lowest ward population in Carmarthenshire, and the lowest population density.
- ⇒ Highest proportion of people aged over 45, proportion aged 65-74 slightly higher than the Carmarthenshire average.
- ⇒ Higher proportion of people with no qualifications
- ⇒ Higher proportion of Welsh Speakers than the Carmarthenshire average.

## 2001 Census Data

Population: Key Facts	Cynwyl Gaeo	Cynwyl Gaeo %	Carmarthenshire
<b>People:</b> born in Wales	940	60.57	80.07
born outside UK	37	2.39	1.93
in non-white ethnic groups	8	0.51	0.94
with limiting long-term illness	309	19.88	26.27
with no qualifications (aged 16-74)	392	33.88	34.04
with higher level qualifications (aged 16-74)	224	19.36	17.24
able to speak Welsh	891	58.36	50.07

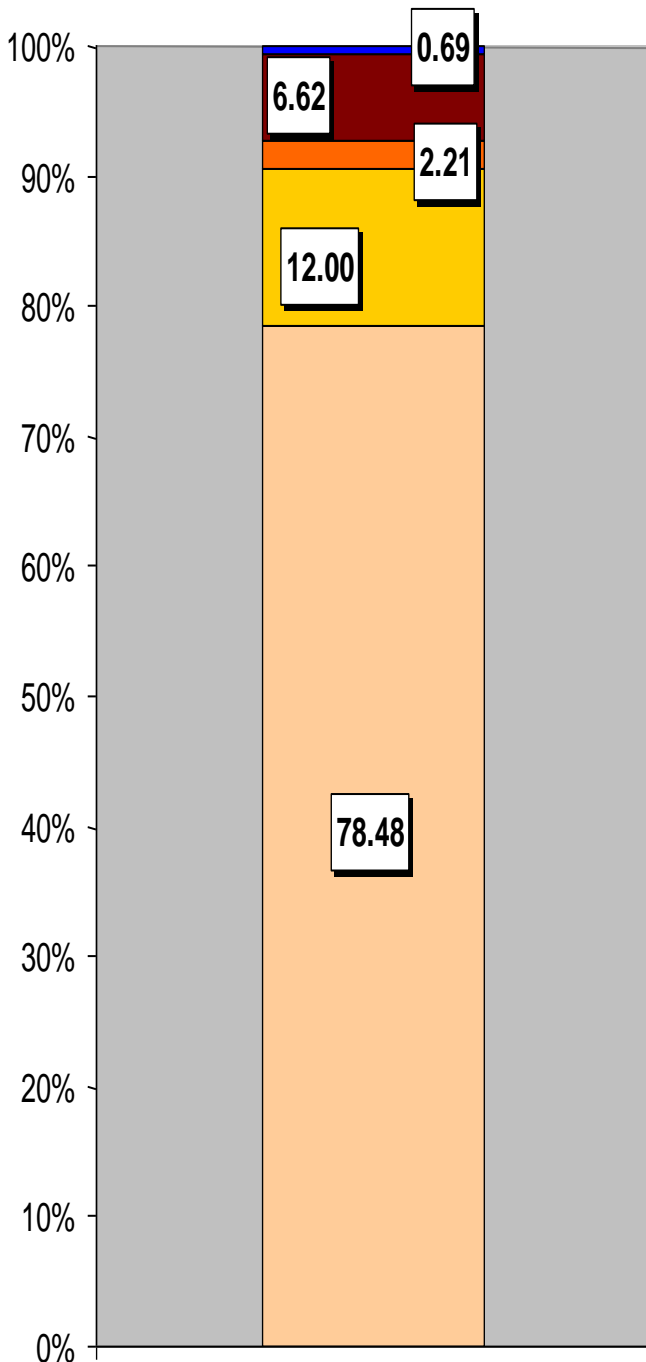
Household Composition	Cynwyl Gaeo	Cynwyl Gaeo %	Carmarthenshire
<b>Total Households/</b> (Average Household Size)	652	(2.38)	(2.33)
Household Type: one person: pensioner	87	13.34	17.15
one person: other	72	11.04	12.81
one family: all pensioners	78	11.96	10.38
one family: married couple	279	42.79	37.35
one family: cohabiting couple	33	5.06	6.26
one family: lone parent	60	9.2	10.29
one family: other	43	6.59	5.79

Source: Census 2001, ONS

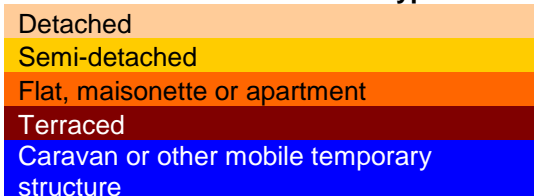
## HOUSING

The area's housing consists largely of detached housing, which is coming up to 80% of the housing stock. Semi-detached and terraced groups are the next largest, with caravan or other mobile temporary structure the smallest. The ward consists of 13 local authority owned properties and 1 Housing Association property.

### Household Accommodation Types



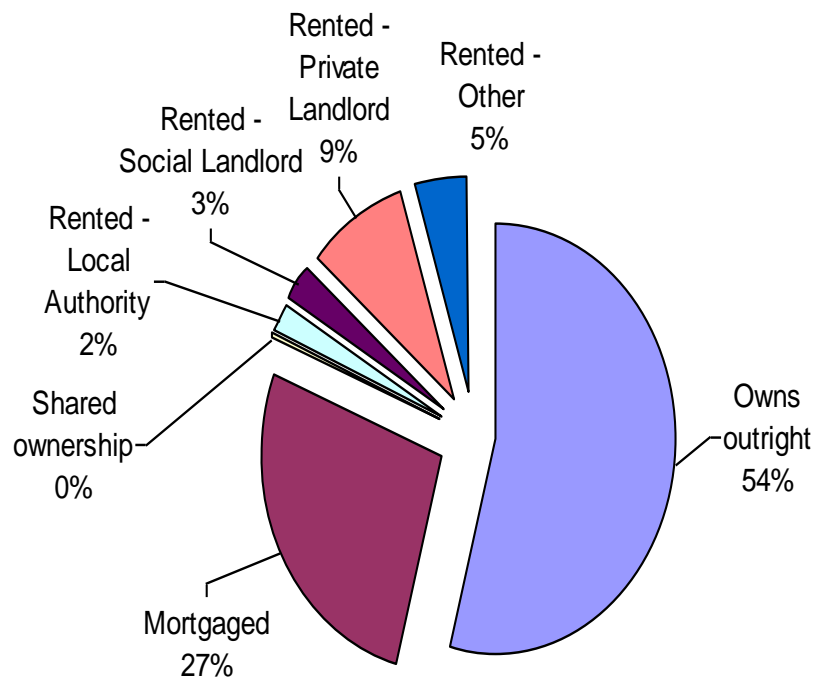
### Household Accommodation Types



### Household Tenure

Owns outright	54%
Mortgaged	27%
Shared Ownership	0%
Rented from Local Authority	2%
Rented from Registered Social Landlord	3%
Rented from Private Landlord	9%
Rented from other	5%

### Household Tenure



## SOCIO-ECONOMIC CHARACTERISTICS

- ⇒ The estimated median household income for Cynwyl Gaeo, based on CACI's 2011 'PayCheck' data, is £23,916 which is the 25<sup>th</sup> lowest (of 58 wards) in Carmarthenshire and 18% below the Carmarthenshire mean of £29,156.
- ⇒ The social profile information indicates a higher than average level of people in supervisory, clerical, junior managerial professions (grade C1) and lower level of people on state benefit, unemployed, lowest grade workers (grade E).

Social Profile	Cynwyl Gaeo	%	Carmarthenshire %
<i>All people aged 16-74 in households</i>	1277	100	100
<b>AB:</b> Higher and intermediate managerial/professional	187	14.64	16.42
<b>C1:</b> Supervisory, clerical, junior managerial/professional	383	29.99	28.5
<b>C2:</b> Skilled manual workers	366	28.66	18.81
<b>D:</b> Semi-skilled and unskilled manual workers	182	14.25	17.88
<b>E:</b> On state benefit, unemployed, lowest grade workers	159	12.45	18.38

Source: 2001 Census, ONS

## ECONOMY AND LABOUR MARKET

Benefit Claimants	Cynwyl Gaeo	Rate %	Carmarthenshire Working Population %
Unemployment Benefit (JSA): March 2012	17	1.6	3.4
Incapacity Benefits (ESA/IB/SDA) August 2011	70	6.7	10.6
Income Support: August 2011	35	3.4	4.8
Disability Living Allowance: August 2011	80	7.7	14.6
Pension Credit: August 2011	80	7.7	9.1
State Pension Claimants: August 2011	445	42.6	38.8

Source: Jobcentre Plus administrative system Dept. for Work & Pensions

Economic Status (people aged 16-74)	Cynwyl Gaeo	Cynwyl Gaeo %	Carmarthenshire %
<b>Economically Active</b>	754	65.17	58.6
Employees: Part-time	129	11.15	10.75
Employees: Full-time	254	21.95	32.67
Self-employed	317	27.4	10.02
Unemployed	33	2.85	3.37
Full-time Student	21	1.82	1.78
<b>Economically Inactive</b>	403	34.84	41.4
Retired	175	15.13	16.12
Student	50	4.32	4.51
Looking after home/family	68	5.88	6.23
Permanently sick/disabled	67	5.79	11.07
Other	43	3.72	3.47

Source: 2001 Census, ONS

## WELSH INDEX OF MULTIPLE DEPRIVATION (WIMD)

WIMD 2011 based on fine-grained geography of lower Super Output Areas (LSOAs). The WIMD 2011 is compiled from eight domains, Income, Employment, Health, Education, Housing, Access to Services, Physical Environment and Community Safety and is published at Lower Super Output Area of which there are 112 in Carmarthenshire. Under WIMD, where Rank 1 is the most deprived, **Cynwyl Gaeo** ranks 54 out of 112 LSOAs in Carmarthenshire and is ranked 892 in Wales from 1896 LSOAs.

The highest level of deprivation attributed to **Cynwyl Gaeo** is the Access to Services domain, being ranked 1<sup>st</sup> in Carmarthenshire and 3<sup>rd</sup> in Wales for this domain.

LSOA	Overall Index		Domains: Income		Employment		Health		Education		Housing		Access to Services		Physical Environment		Community Safety	
	54	892	63	1082	80	1111	109	1710	77	1202	41	857	1	3	93	1412	103	1869
Cynwyl Gaeo																		

Source: Welsh Index of Multiple Deprivation 2011 (released August 2011), Welsh Assembly Government.

Note: LSOAs ranked 1-112 (Carmarthenshire), 1-1896 (Wales).

## CRIME

Cynwyl Gaeo	Offence Group										Annual Total
	Violence against the Person	Sexual Offences	Robbery	Burglary	Auto crime	General Theft	Fraud and Forgery	Criminal Damage	Drug Offences	Other	
<b>Fiscal Year (1st April to 31st March)</b>											
<b>2008/2009</b>	7	0	0	4	1	7	1	6	1	1	28
<b>2009/2010</b>	0	0	0	0	2	9	1	7	2	0	21
<b>2010/2011</b>	3	0	0	9	0	5	2	2	5	0	26

Source: Dyfed Powys Police, Headquarters, Llangunor.

### For further information please contact:

Lesley Rees, Policy & Research Officer

01267 224462

llrees@carmarthenshire.gov.uk