

## Marine Conservation Zone: Selection Assessment Document

<b>Version and Issue date</b>	<b>Amendments made</b>
V1.0 07.09.11	Draft final recommendations refined by the RSG and Local groups in July 2011 and finalised by the RSG 2/3 August 2011.

<b>1. Site name</b> Turner Contemporary recommended Reference Area no. 5	<b>3. Site surface area</b> 38 ha                      0.38 km <sup>2</sup>
<b>2. Site centre location</b> ETRS89 N51 23' 39.987" E1 23' 1.561" N51 23.666' E1 23.026' (N.B. WGS 84 UTM 31N coordinates are provided in the map vertices)	<b>4. Biogeographic region</b> Southern North Sea

### 5. Features identified for specific protection within the Turner Contemporary rRA <sup>1</sup>

Feature type	Feature name	Area / No. of records <sup>2</sup>
Broad-scale habitats	A1.2 Moderate energy intertidal rock	0.07 km <sup>2</sup>
	A2.2 Intertidal sand and muddy sand	4.4 m <sup>2</sup>
	A2.3 Intertidal mud	0.04 km <sup>2</sup>
Habitat FOCI	Littoral chalk communities	0.08 km <sup>2</sup>
	Subtidal sands and gravels	0.02 km <sup>2</sup>
	Subtidal chalk	0.04 km <sup>2</sup>
Species FOCI Low	St John's Jellyfish ( <i>Lucernariopsis cruxmelitensis</i> )	1 record

### 6. Other features occurring within the Turner Contemporary rRA (to be protected)

Feature type	Feature name	Reason not specifically identified for reference area protection
Broad-scale habitats	A3.2 Moderate energy infralittoral rock	Not viable for subtidal Broad Scale Habitat RA
	A4.2 Moderate energy circalittoral rock	Not viable for subtidal Broad Scale Habitat RA
	A5.2 Subtidal sand	Not viable for subtidal Broad Scale Habitat RA
	A5.4 Subtidal mixed sediments	Not viable for subtidal Broad Scale Habitat RA

### 7. Map of site (see below)

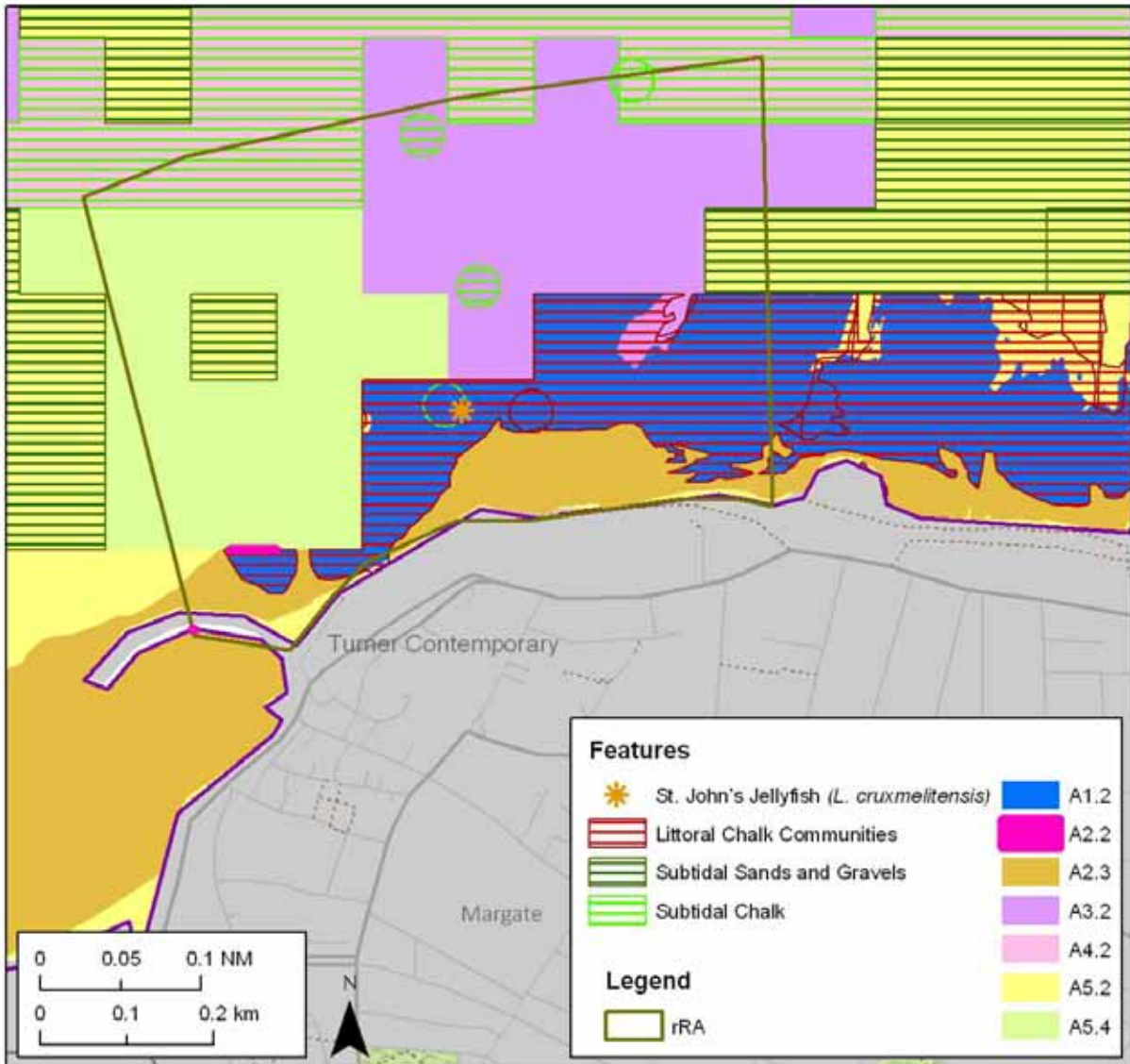
### 8. Site summary

This site falls within the Thanet Coast rMCZ 7 and captures the only regional record of the St John's Jellyfish (*Lucernariopsis cruxmelitensis*). The site lies within an area of high biodiversity and algal richness (benthic biotope and benthic species richness) which is underpinned by the habitat complexity captured within the boundaries. Other features identified for specific protection are littoral chalk communities, subtidal chalk and subtidal sands and gravels, as well as four broad scale habitats listed in the table above. The wildlife sector considers this is not a suitable location for a RA for intertidal chalk reef as it lies under defended cliff and is progressively disappearing. According to the ENG, the minimum viable patch size for a site protecting subtidal sands and gravels depends on the specific substratum type of the habitat and therefore further survey work will be necessary to consider if this site is suitably sized to protect it.

<sup>1</sup> Sources of information relating to these features are listed in Section 13.

<sup>2</sup> Areas have been calculated according to spatial GIS data and are indicative only. A "record" is a survey point where a single individual, population or habitat has been found.

Turner Contemporary  
Recommended Reference Area no 5



Features to be protected within reference area:

- A1.2 Moderate energy intertidal rock
- A2.2 Intertidal sand and muddy sand
- A2.3 Intertidal mud
- A3.2 Moderate energy infralittoral rock
- A4.2 Moderate energy circalittoral rock
- A5.2 Subtidal sand
- A5.4 Subtidal mixed sediments
- Littoral chalk communities
- Subtidal sands and gravels
- St. John's Jellyfish (*L. cruxmelitensis*)
- Subtidal chalk



This map and list show the main features selected by the RSG for inclusion within this Draft Reference Area. However, **ALL** features (including any additional) falling within this area would be given Reference Area protection.

Map and coordinates displayed in WGS84, UTM Zone 31 North.  
©OpenStreetMap 2010. ©Ordnance Survey 2010.  
©JNCC 2009. ©Crown Copyright 2009.  
**NOT TO BE USED FOR NAVIGATION.**

## 9. Detailed site description

For further details please see detailed site description for rMCZ 7.

## 10. Site boundary

The boundary of the site has been drawn to include the St John's Jellyfish (*Lucernariopsis cruxmelitensis*) and to ensure the site has a minimum dimension of 500m. However, according to the ENG this site is not large enough to meet the minimum viable patch size for this feature (1km). Further discussions with stakeholders would be essential if this target were to be met.

## 11. Conservation objectives

Individual conservation objective forms for each feature can be found in Appendix 1. In selecting the reference areas, stakeholders have identified specific features that merit reference area protection. ALL features in a reference area will, by default, have a Conservation Objective of "RECOVER to Reference Condition."

## 12. Sites to which this site is related

This site falls within the Thanet Coast rMCZ 7, Thanet Coast SSSI, the Thanet Coast SAC. It is close to the Westgate Promontory draft Reference Area (no 4).

## 13. Supporting documentation (information relating to ENG features only)

Information	Type of information	Source	Name of survey	No of points	Dates
All broad scale habitats	Modelled and survey data	UKSeaMap/MESH v7	Combined	n/a	2011
Littoral chalk communities	Survey	National contract data, DEFRA MB102 2C	JNCCMNCR20335052	n/a	18/08/1997
Littoral chalk communities	Survey	National contract data, DEFRA MB102 2C		n/a	29/09/2006
Subtidal chalk	Survey	National contract data, DEFRA MB102 2C		1	27/09/2006
Subtidal chalk	Survey	National contract data, DEFRA MB102 2C	JNCCMNCR10000457	3	1993
Subtidal chalk	Survey	National contract data, DEFRA MB102 2C	JNCCMNCR20000695		1997
Subtidal chalk	Survey	Marine recorder extract Sept 2010		5	1995-1997
Subtidal sands and gravels	Survey	National contract data, DEFRA MB102 2C		2	27/09/2006
St John's Jellyfish ( <i>Lucernariopsis cruxmelitensis</i> )	Survey	National contract data, DEFRA MB102 2B		1	21/09/2001

## References

Please refer to the references in the site description of r MCZ 7.

## 14. Stakeholder support for the site

The Local Group supported the current boundary for this rRA. The RSG as a group reached consensus that this site should be put forward in their final recommendations.

Individual sectors wishing to note their support or concerns about the site recorded the following at the final RSG meeting in August 2011; their comments have been transcribed verbatim from the form that they completed:

## Turner Contemporary rRA no 5

SECTOR	ORGANISATION	COMMENT for Turner Contemporary rRA 5
Yachting	RYA	Support on basis that it does not impact on recreational boating and launching.
Sea Angling		Shape I believe acceptable to keep ramps clear.
Birds	RSPB	Support boundary change suggested at Local Group meeting.
Wildlife Trusts	Hampshire Wildlife Trust	I support this and the LG amendment.
Marine Ecology	Seasearch	Strongly support inclusion of chalk promontory for habitat for stalked jellyfish and for its recognised algal diversity.
Marine Wildlife	Marine Conservation Society	<u>Support</u> . Though too small to be viable.
Heritage and Archaeology	English Heritage	Support as archaeological excavation will be allowed as a scientific exemption.

### 15. Evolution of the site recommendations

The site boundaries were first placed to cover the record of the St John's Jellyfish off Margate and so that the rRA was located between a slipway in the west and an outcropping to the east. The Local Group meeting (July 2011) suggested moving the site slightly eastwards in order to avoid the slipway, which is heavily used, and the Life Boat Station thus covering an area that is less accessible to the public and that would be easier to manage if designated. The revised boundary also captures more littoral chalk communities and subtidal chalk.

For greater detail on discussions relating to the site and the network, please refer to both RSG and Local Group stakeholder meeting reports at [www.balancedseas.org](http://www.balancedseas.org).

### 16. Implications for Stakeholders

The following issues are associated with this site:

- This dRA was identified as critical to meeting the ENG criteria (only one example, or very few examples, found in the region). It has therefore been included into the network by the RSG with the understanding that it would be necessary to meet the ENG criteria, but may not have particularly strong support for its location or suitability.
- The area was discussed at a Local Group meeting and there are a number of factors in its favour:
  - It is well defined by the lido and the Winter Gardens which mean that its location would be easy to mark and identify.
  - The beach here is completely covered at high tide, and the site lies at the end of the rocks so is less used by people than other beaches around here.
  - The seabed is seaweed covered so there is also less shellfish collection here.
- Some crab and bait collection occurs and discussions would be needed with these sectors.

This list represents only the major issues associated with the site. To see all stakeholder discussions, please refer to the Balanced Seas RSG and Local Group meeting reports at [www.balancedseas.org](http://www.balancedseas.org).