

# Religion in Prisons 1999 and 2000

15/01

England and Wales

Farid Guessous, Nick Hooper and Uma Moorthy

Mirroring the religious diversity of modern British society, the Prison Service recognises more than 40 different religious denominations.

This Bulletin examines patterns and trends in the faiths followed by prisoners between 1993 and 2000

## MAIN POINTS

- In 2000, the largest group of prison inmates were *Anglicans*, who formed 39% of the prison population. Next in size was the group with *No religion* (32%), followed by *Roman Catholics* at 17% and *Muslims* at 7% of the prison population. *Buddhists*, *Hindus* and *Sikhs* each accounted for around a half of one percent of the population.
- Prisoners with *No religion* were the fastest growing group of the prison population. This group more than doubled in size, growing by 181% between 1993 and 2000; the prison population as a whole grew by 55% over the same period.
- The number of *Muslims* in prison doubled between 1993 and 2000. The population of *Buddhists*, although relatively very small, also grew faster than average, increasing by 60% over the same period.
- The number of all *Christians* grew more slowly than the average over this period, falling from 75% of the total population in 1993 to 59.5% in 2000. The fastest growing *Christian* denomination in prisons was *Roman Catholicism*, whose adherents accounted for approximately one sixth of the prison population in each year between 1993 and 2000, but whose actual numbers grew by 45% over this period.
- Inmates with *No religion* were most likely to be young (under 30 years) white males on short sentences (of less than three years).

## Contents

---

### Text and analysis

---

Paragraphs		Page
1 - 5	Introduction	2
6 - 9	Scope of the data in the Bulletin	2
10 - 15	General trends	3
16 - 17	Religion in the Prison Population in 2000	5
18 - 19	Religion and gender	6
20 - 21	Religion, gender and ethnicity	6
22 - 24	Religion, gender and age	7
25 - 28	Religion and custody type	8
29 - 35	Religion and sentence length	9
36 - 40	Religion and type of establishment	11
41 - 44	Religion by Prison Service area	11
45 - 47	Religion and receptions	12
-	Publications of related interest	13

---

### Figures

---

		Page
Figure 1	Prison population by religion, March 2000	3
Figure 2	Index of increase in Prison population by religion, 1993 - 2000	5
Figure 3	Religious affiliation by gender, September 2000	6
Figure 4a	Ethnicity of main religious groups – male inmates, Sept. 2000	7
Figure 4b	Ethnicity of main religious groups – female inmates, Sept. 2000	8
Figure 5	Bar chart of main religious groups by age, September 2000	9
Figure 6	Median sentence length by religious group, September 2000	10
Figure 7	Pie chart of all initial receptions by religious group, January - December 2000	12

---

### Tables

---

Table 1	Prison population by religion	March and September 1999, March and September 2000
Table 2	Religion and gender	March and September 1999, March and September 2000
Table 3a,3b	Religion, gender and ethnicity	September 1999, September 2000
Table 4a, 4b	Religion, gender and age	September 1999, September 2000
Table 5	Religion and custody type	September 1999, September 2000
Table 6a, 6b	Religion and sentence length	September 1999, September 2000
Table 7a, 7b	Religion and type of establishment	September 1999, September 2000
Table 8a, 8b	Religion by Prison Service area	September 1999, September 2000
Table 9a, 9b	Initial receptions by religion and custody type	January – December 1999, January – December 2000

---

## **Introduction**

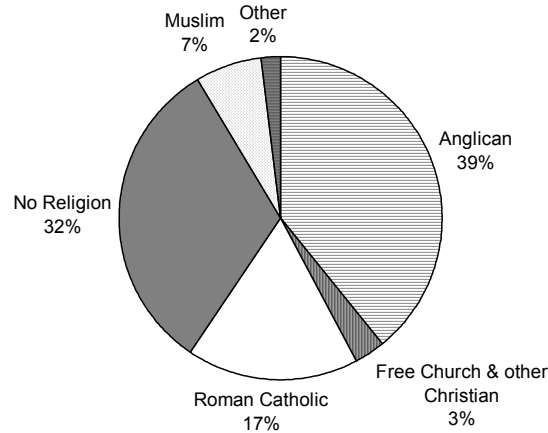
1. The Prison Service follows the policy of providing the inmates of its establishments with the facilities and opportunities necessary to enable them to practice their religion in prison, consistent with good order and discipline in prisons. All prisoners are given access to ministers of their own religion, provision of diets to meet special religious needs and access to their main religious texts.
2. The Prison Service Chaplaincy is headed by a Chaplain General, who is supported by a Senior Roman Catholic Minister, a Free Church Adviser and a Muslim Adviser. All prisons have a Christian Chaplain. In addition, the Prison Service pays for ministers of other faiths and denominations to provide for the spiritual needs of their co-religionists in prison.
3. The Prison Service works closely with representatives of faith groups to identify religious requirements and to ensure suitable provision. The Advisory Group on Religion in Prisons, which is chaired by the Director of Resettlement, comprises representatives of faiths which have a substantial representation in the prison population, such as Buddhism, Christianity, Hinduism, Islam, Judaism and Sikhism. This Group meets regularly to monitor policy and practice on issues relating to religious provision.
4. In addition, the Prison Service has established Religious Consultative Services (RCSs) for the main faiths. These act as independent advisers who provide a central point of advice on matters regarding their faith.
5. The Prison Service is currently taking forward a programme of work to ensure that the interests of religious minorities in prisons are recognised and protected.

## **Scope of the Data in this Bulletin**

6. This bulletin brings together data on the religious affiliation of prisoners in Prison Service establishments in England and Wales for the years 1999-2000. The data originate from the central Inmate Information System (IIS). This is the first such publication by the Home Office, after changes to the IT system in 1999 permitted data on religion which was locally recorded in prisons to be extracted and analysed centrally. The data source used for pre-1999 data is the annual Census of Religion in Prisons conducted by the Prison Service Chaplaincy. The change in the data source may affect the comparability of the definition of certain denominations.
7. The religious affiliation of a prisoner is recorded at reception into a prison establishment, at the same time as other personal details such as name, date of birth and ethnicity. It should be noted that religion, like ethnicity, is self-reported by the prisoner. Subsequent to reception, the prison Chaplain undertakes the duty of interviewing every prisoner, regardless of faith, to check that his or her religion has been correctly recorded. If the

prisoner's faith has been incorrectly recorded, the Chaplain will amend the information on the prisoner's file.

**Figure 1 Prison Population by Religion**  
England and Wales, March 2000



8. The data are held as part of the prison's Local Inmate Data System (LIDS) and are fed electronically into IIS at regular intervals. Information can be amended on LIDS and IIS for prisoners who change their religious affiliation during their time in prison. However, there is currently no system for recording such conversions. The constraints presented by the present recording system make it extremely difficult, if not impossible, to count the number and nature of any religious conversion that occurs during the term of a prisoner's sentence. The statistics in this bulletin do not distinguish those prisoners who may have changed their religion during custody.
9. We are currently unable to compare religion in the prison population with religion in the national population as such national data will be collected for the first time, and on a voluntary basis, by the 2001 Census.

### **General Trends (Table A and Figure 2)**

10. The data in Table A show the composition of the prison population by religion over a period of 8 years. The prison population increased overall by 55% between 1993 and 2000. All religious groups recorded rises in population except for *Other Christian*, *Jewish* and *Other Religions*.
11. Of the groups recorded in the table, the largest increase over this period was among the group with *No religion*, which grew by 181% over this period.

12. The population of all *Christians* showed less than average growth, increasing by 24% between 1993 and 2000. Most of this growth was due to the increase in the number of *Roman Catholics*, whose population increased by 45%. The rate of growth among *Anglicans* was 18%.
13. There were higher than average rates of growth among some other religions. The second highest rate of growth overall was among *Muslims*, who increased by 103% over 1993-2000. The number of *Buddhists* increased by 60%. *Hindus* and *Sikhs* increased by 52% and 22% respectively.
14. Figure 2 plots an index of population growth over time for the main religious groups in the prison population. For each year, the percentage growth relative to the base year 1993 has been plotted. Hence the figure plotted for *No religion* in 2000, for example, is 281 = 100% + 181%.

**Table A Prison population by Religion**

England and Wales

	Year							
All Prisoners	1993	1994	1995	1996	1997	1998	1999	2000
<b>Total</b>	<b>42,048</b>	<b>46,624</b>	<b>44,253</b>	<b>53,509</b>	<b>57,970</b>	<b>64,456</b>	<b>64,212</b>	<b>65,463</b>
<b>All Christian</b>	<b>31,375</b>	<b>32,516</b>	<b>29,027</b>	<b>35,187</b>	<b>37,129</b>	<b>40,609</b>	<b>39,103</b>	<b>38,944</b>
Anglican	21,612	22,349	20,868	23,856	25,223	27,299	25,725	25,567
Free Church	1,049	1,178	1,119	1,291	1,119	1,337	1,158	1,132
Roman Catholic	7,766	8,457	6,540	9,457	10,238	11,172	11,386	11,327
Other Christian	948	532	500	583	549	801	833	919
<b>Buddhist</b>	<b>177</b>	<b>168</b>	<b>182</b>	<b>230</b>	<b>226</b>	<b>324</b>	<b>306</b>	<b>285</b>
<b>Hindu</b>	<b>161</b>	<b>157</b>	<b>162</b>	<b>201</b>	<b>198</b>	<b>304</b>	<b>243</b>	<b>246</b>
<b>Jewish</b>	<b>209</b>	<b>198</b>	<b>178</b>	<b>203</b>	<b>288</b>	<b>214</b>	<b>192</b>	<b>160</b>
<b>Muslim</b>	<b>2,106</b>	<b>2,513</b>	<b>2,745</b>	<b>3,327</b>	<b>3,681</b>	<b>4,188</b>	<b>4,311</b>	<b>4,298</b>
<b>Sikh</b>	<b>323</b>	<b>363</b>	<b>353</b>	<b>381</b>	<b>394</b>	<b>491</b>	<b>447</b>	<b>394</b>
<b>Other non-Christian</b>	<b>142</b>	<b>147</b>	<b>57</b>	<b>119</b>	<b>79</b>	<b>95</b>	<b>92</b>	<b>89</b>
<b>Non-recognised<sup>1</sup></b>	<b>140</b>	<b>157</b>	<b>129</b>	<b>144</b>	<b>135</b>	<b>159</b>	<b>144</b>	<b>152</b>
<b>No religion</b>	<b>7,415</b>	<b>10,405</b>	<b>11,420</b>	<b>13,717</b>	<b>15,840</b>	<b>18,072</b>	<b>19,371</b>	<b>20,888</b>
<b>Not recorded</b>	-	-	-	-	-	-	3	7

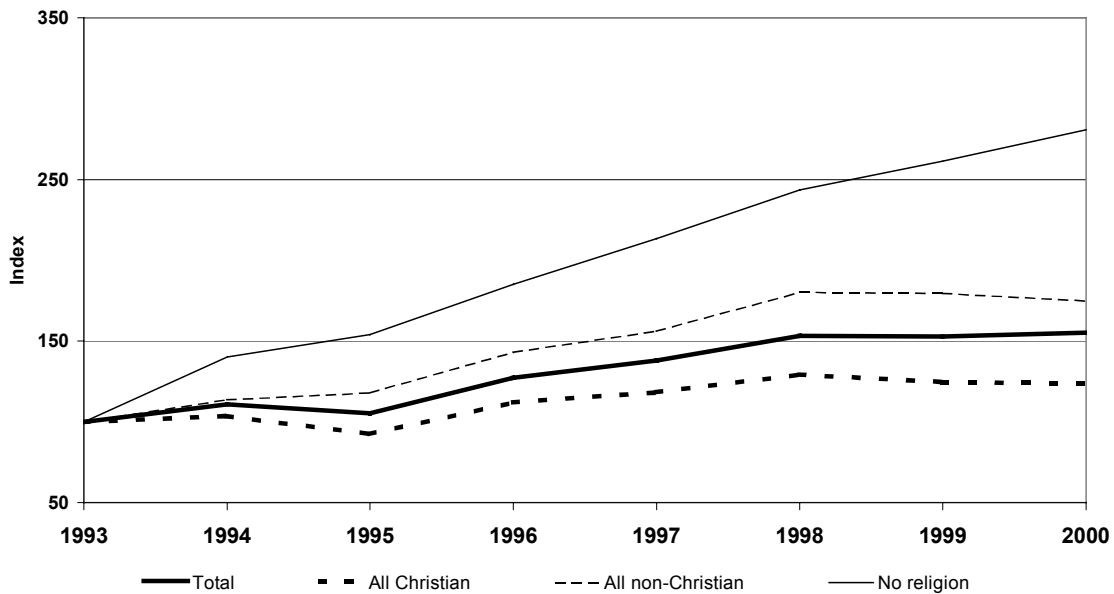
1. All data are recorded in March of the corresponding year.

2. Figures for 1993-1998 were recorded by the Annual Census of Religion in Prisons carried out by the Chaplaincy of HM Prison Service

3. Figures for 1999 onwards are recorded by the Prison Service on the Local Inmate Data Base (LIDS)

<sup>1</sup> *Non-recognised* religions are *Nation of Islam*, *Rastafarianism* and *Scientology*. Of these, *Rastafarians* are allowed special privileges as they are recognised as a cultural group with special needs.

**Figure 2 Index of Increase in Prison Population by Religion 1993-2000**  
(1993 = 100)



15. Population growth among inmates with *No religion* consistently outstrips growth among any other group in each year. The *Christian* prison population has generally grown more slowly than the average rate of growth. Conversely, all the other religions together show a rate of increase, which is consistently higher than that of the prison population as a whole.

### Religion in the Prison Population in 2000 (Table 1)

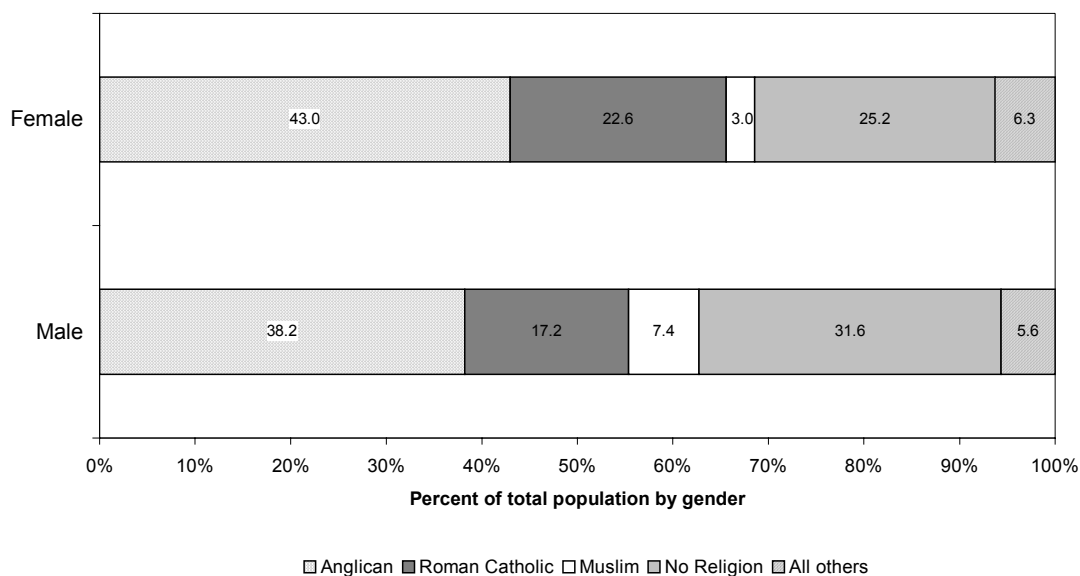
16. The religious composition of the prison population remained stable over 1999 and 2000, even though the population as a whole decreased very slightly by 2% between March and September in 2000. *Christians* comprise the largest single group, accounting for almost 60% of all inmates. Among *Christian* inmates, the largest group are *Church of England* who comprise about 39% of the total. The second largest group are *Roman Catholics* who comprise around 17% of the total.
17. The largest group of prisoners from religions other than Christianity was *Muslim*, forming about 7% of the total. Other religious groups, such as *Buddhists*, *Hindus*, *Jews* and *Sikhs*, each formed less than 1% of the population. Inmates with *No religion* formed an important minority at around 30% of the total population. Only 1% of these were *Agnostics* and *Atheists*. The remainder had no stated religious affiliation.

## Religion and Gender (Table 2 and Figure 3)

18. The prison population was overwhelmingly male. Even though the number of female inmates has risen steadily over the period 1993 to 2000, they comprised less than 6% of the total prison population in 2000. Women inmates are more likely to have a religious affiliation than their male

**Figure 3 Religious Affiliation by Gender**

England and Wales, September 2000



counterparts. On average, only 25.2% of women were of *No religion*, compared with 31.6% of male inmates.

19. In September 2000, an average of 71% of women were Christians compared to 59% of the men. In addition, the representation of each *Christian* group was higher among women than among men. The other major religions accounted for only 4% of women inmates on average, compared to an average of 9% among the men. Of these other religions, the single largest group was *Muslim*, comprising 3% of all female inmates and 7% of all male inmates, on average.

## Religion, Gender and Ethnicity (Tables 3a, 3b and Figures 4a and 4b)

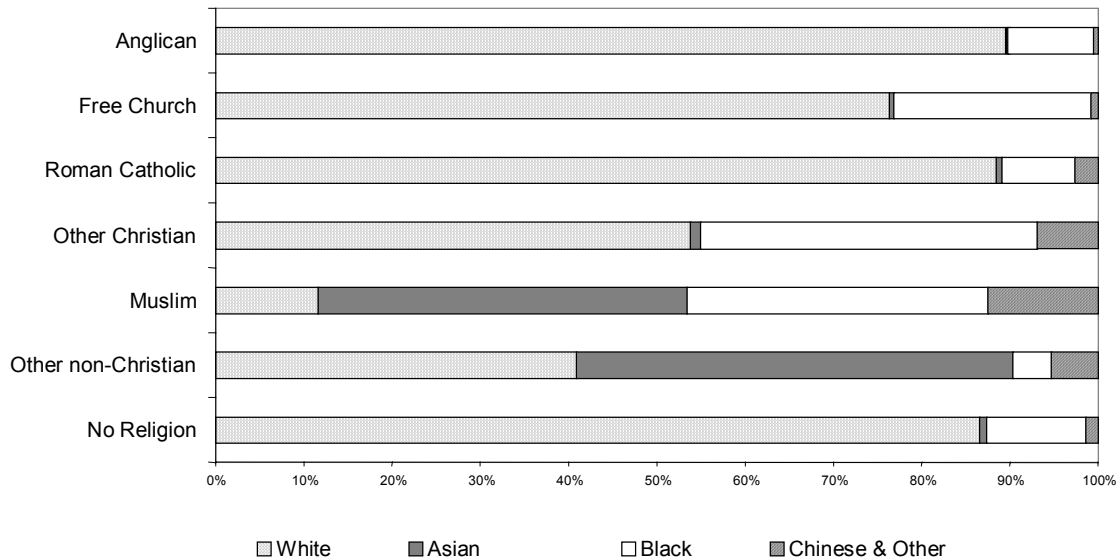
20. The patterns of ethnicity within each religion or denomination differ little according to the gender of the inmates. In Figures 4a and 4b, the different religions have been gathered into groups for the sake of clarity. The group *Other non-Christian*, which is referred to in this section of the Bulletin, comprises all religious groups, which are not *Christian* or *Muslim*.

21. In 1999 and in 2000, the majority of the *Christian* inmates of both sexes were White. Black inmates formed a minority within each religious grouping. South Asians were almost exclusively *Muslim* or *Other non-*

*Christian*. Of the *Muslim* inmates, 76% of men were Asian or Black in 2000 (42% Asian, 34% Black). The ethnicity of the majority (82%) of *Muslim* women was evenly distributed between Asian, Black and Chinese/Other. Of the inmates with *No religion*, most were White.

**Figure 4a - Ethnicity of Main Religious Groups; Male Inmates**

England & Wales, 30 September 2000



### Religion, Gender and Age (Tables 4a, 4b and Figure 5)

- 22. There was little variation by age across religions. The age distribution between sexes remains similar for all religious groups.
- 23. Young offenders, i.e. those aged 21 or below, generally comprise less than 10% of each religious group in both 1999 and 2000. Young offenders comprise the bulk of those inmates with *No religion*: more than half of those with *No religion* are aged 21 years or less; three quarters of those with *No religion* are under 30 years of age. Most elderly inmates, i.e. those aged 60 and over, were Christian or Muslim.
- 24. *Anglicans*, *Roman Catholics* and *Muslims* display similar age profiles, approximately half of each group being under 30 years of age. The highest proportions of offenders of age 21 or less who profess a religion belong to these three religious groups.



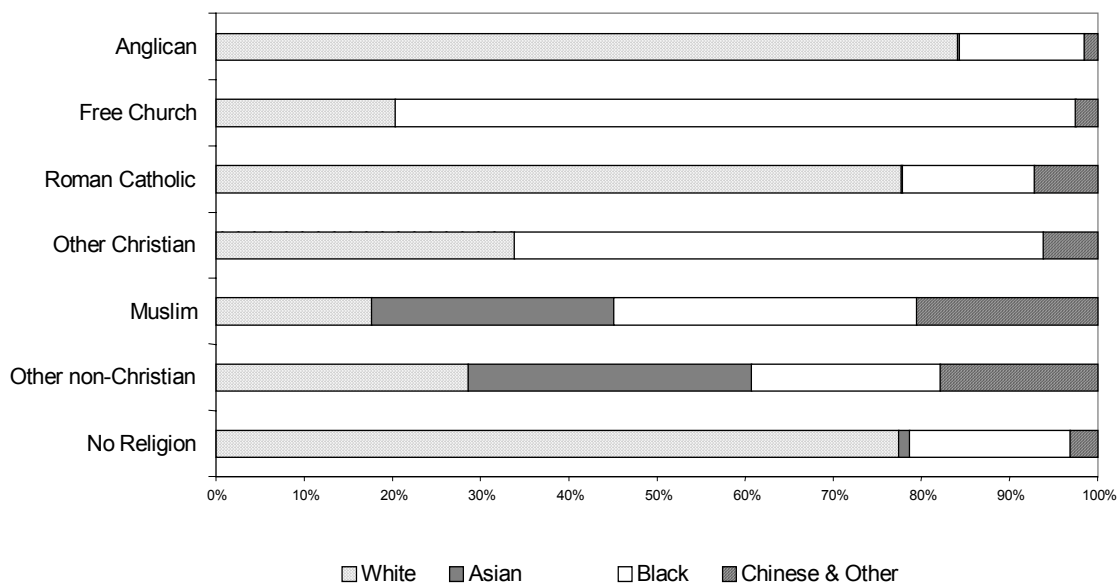
## Religion and Custody Type (Table 5)

25. Sentenced prisoners formed the majority of prison inmates in 1999 and in 2000. Over the whole prison population in September 2000, 11% were as yet untried, 6% were convicted prisoners awaiting sentence and 82% were prisoners under sentence.

26. Among *Sikh* prisoners, 15% were untried in September 2000. At the same time, 14% of *Muslims*, 12% of *Hindus* and 12% of those with *No religion* were untried. *Buddhists*, of whom fewer than 7% were untried, form the religious group with the smallest proportion of untried prisoners.

Figure 4b - Ethnicity of Main Religious Groups; Female Inmates

England & Wales, 30 September 2000

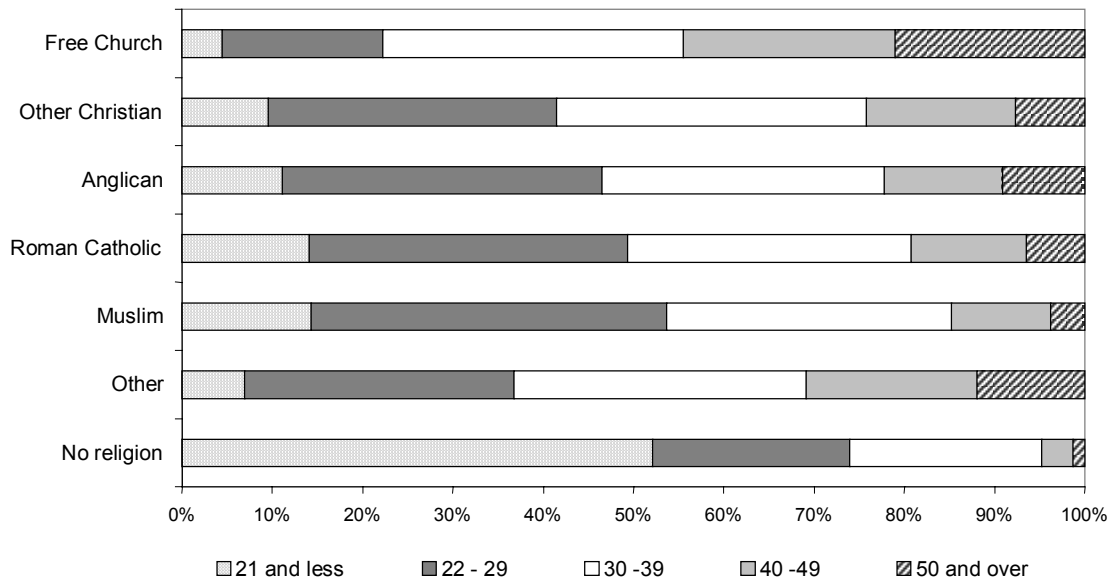


27. Prisoners with *No religion* formed 34% of all untried prisoners and 31% of all convicted prisoners in September 2000. *Muslims* formed 9% of all untried prisoners and just over 6% of all convicted prisoners. Conversely, *Anglicans* were 35% of all untried prisoners and 40% of all convicted prisoners.

28. A very small percentage (1%) of all inmates were fine defaulters or had been imprisoned for non-criminal offences. These were mainly immigration offences, but also include offences such as contempt of court or non-payment of maintenance. In September 2000, such offences accounted for 11% of *Hindus*, 9% of *Other Christians* and 8% of *Sikhs*, but only 4% of *Muslims* in prison.

**Figure 5 Main Religious Groups by Age**

England and Wales, September 2000



### Religion and Sentence Length (Tables 6a, 6b and Figure 6)

29. Figure 6 shows the distribution of sentence length by religion, for all except life sentences, in September 2000. The religious groups are arranged by ascending order of median sentence. The upper (75%) and lower (25%) quartiles are also displayed for each group<sup>2</sup>.

30. The median sentence length varies from 1.5 years to 4.5 years. The shortest median sentences were served by prisoners with *No religion* and *Sikh* prisoners. Prisoners with *No religion* showed the most consistency (lowest variation) in length of sentence. The longest median sentences were served by *Buddhist* prisoners. For *Anglican* and *Roman Catholic* prisoners, the median sentence length served was 2.5 years. These two groups displayed almost identical sentencing patterns, with similar medians and similarly high consistency (low variation) in the pattern of sentence length.

31. In September 2000, the *No religion* group had the highest proportion of prisoners on Automatic Unconditional Release (AUR)<sup>3</sup> sentences (22%).

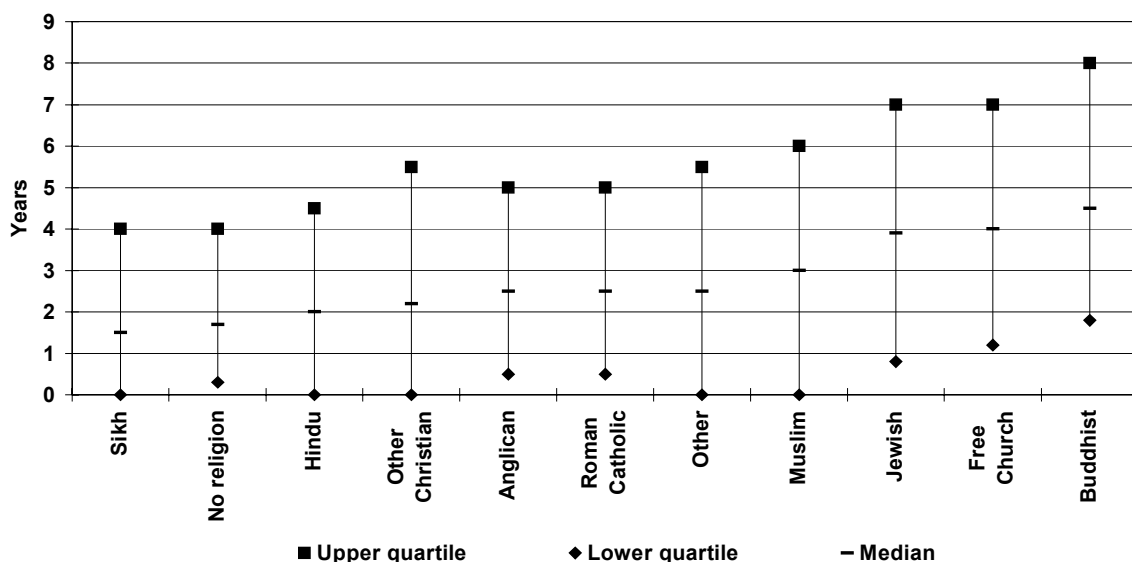
<sup>2</sup> The distance between upper and lower quartiles measures variation in sentence length. Only 25% of all sentences for a given group are longer than the upper quartile sentence length; conversely, 25% of all sentences for the given group are shorter than the lower quartile. The greater the distance between upper and lower quartiles, the more variation there is in sentence length.

<sup>3</sup> Automatic Unconditional Release (AUR) prisoners are those sentenced to under 12 months. Prisoners sentenced to at least 12 months but under 4 years are entitled to Automatic Conditional Release (ACR) after they have served a sufficient proportion of their sentence. Prisoners sentenced to 4 years or more but less than life are eligible for Discretionary Conditional Release (DCR) after they have served a sufficient proportion of their sentence.

This group also had the lowest proportion of prisoners on Discretionary Conditional Release (DCR) at 31%. *Non-recognised* groups had a DCR sentence rate of 63%. Half of all *Muslims* and *Free Church* members were serving DCR sentences. Across all prison inmates, the proportion serving DCR sentences was 38%.

32. Of prisoners serving a life sentence in September 2000, the majority (65%) were *Christian*, while 24% had *No religion*. Of all the religions, the highest proportion of life sentences was to be found among *Buddhist* prisoners, of whom 30% were serving a life sentence. In absolute terms, however, this represented only 100 inmates; there being, for example, 1975 *Anglicans* serving life sentences.
33. The group which was least likely to contain life-sentence prisoners was *Non-recognised* religions: only 6% of this group were serving a life sentence, even though a high proportion of this group were on DCR sentences. Another group with proportionately low representation among inmates serving life was *No religion*, of whom only 7% were serving a life sentence.
34. Some religions, such as *Buddhism*, *Judaism* and *Free Church*, contain a disproportionate number of life sentence prisoners. These figures are inflated by the small numbers of inmates, which comprise these groups, as described in paragraph 32. The figures are further skewed because such groups are under-represented among the short-term prison population, who form the bulk of the turnover of the prison population.
35. A large number of non-criminal inmates have no known sentence length, this reflects the fact that this category contains a high proportion of detainees awaiting deportation under the 1971 Immigration Act.

**Figure 6 Median Sentence Length**  
England and Wales, September 2000



### **Religion and Type of Establishment (Tables 7a and 7b)**

36. In September 2000, most prisoners were held in Local prisons (37%) or in Closed Training prisons (39%).
37. The distribution of inmates between establishments reflects the distribution of sentence lengths. Inmates with *No religion*, whose median sentence length was low, were more likely than any other group to be in a Remand Centre or in a Closed Young Offenders' Institution. *Buddhist* and *Free Church* prisoners, whose median sentence length was high, were mostly held in Closed Training prisons.
38. *Hindu*, *Jewish* and *Sikh* prisoners were more likely to be held in Open conditions than any other groups. Between 6% and 16% of each of these groups were held in Open Training prisons, in September 2000. The proportion of all inmates in Open Training prisons was 6%.
39. Of all prisoners, 5% were held in Remand Centres: of these, 53% had *No religion*, compared to 31% with *No religion* across all establishments.
40. Only 9% of prisoners with *No religion* were held in Remand Centres. This group was under-represented in Training prisons, but over-represented in Young Offenders Institutions, particularly in those establishments holding Juveniles.

### **Religion by Prison Service Area (Tables 8a and 8b)**

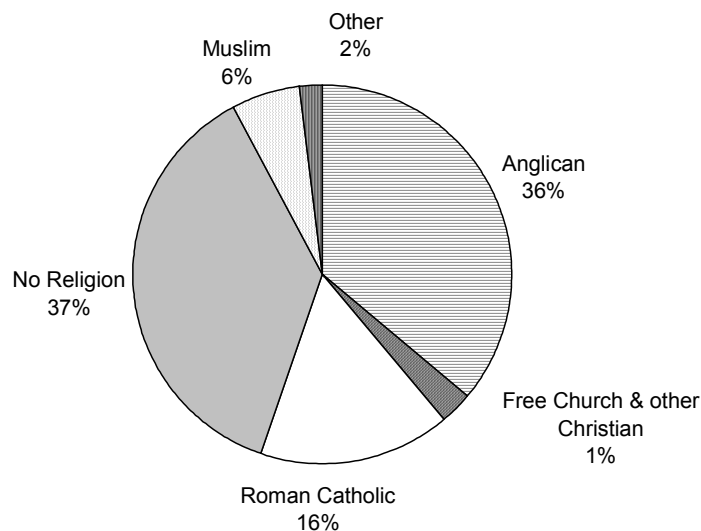
41. The distribution by religion of inmates over Prison Service Areas showed some regional variation.
42. In September 2000, the national level across all Prison Service Areas of inmates with *No religion* was 31.2%. The smallest proportions of inmates with *No religion* were in Lancashire & Cumbria (20%) and in Manchester, Mersey & Cheshire (22.7%). These two areas held the highest proportions of *Roman Catholic* inmates (26.2% and 26.4% respectively).
43. *Muslim* inmates were most likely to be found in London (15.2%) and in Kent, Surrey & Sussex (9.8%). They were least likely to be in the Female Estate (3%). There was also a higher-than-average proportion of *Muslim* inmates in the Eastern (8.7%) and High Security (8.6%) areas.
44. Inmates of the other religions were fairly evenly distributed throughout the Prison Service areas. The number of *Buddhist*, *Hindu*, *Jewish* and *Sikh* inmates held in each area was of the order of a few dozen prisoners. The relatively large number of *Buddhists* (69 inmates in September 2000) in the High Security Area reflects the high frequency of life sentences being served by *Buddhist* inmates.

## Religion and Receptions (Tables 9a, 9b and Figure 7)

45. The religious profile of prisoners arriving at reception for the first time remained stable over the year (Table 9). It should be noted that the number of initial receptions in a year is considerably higher than the baseline prison population reported in Tables 1 to 8 because of the large number of prisoners serving short sentences of less than 12 months. It is also possible that persistent minor offenders are counted more than once. Consider for example, a prisoner who completes a short sentence of 3 months, say, and who re-offends soon after release. If (s)he is received into prison for a second time in the same year, (s)he will count as two receptions.
46. The main difference between the religious composition of receptions and that of the general prison population is in the proportion of individuals with *No religion* (Figures 1 and 7). Among receptions this proportion was 37%, compared with 31-32% of individuals with *No religion* in the general prison population. The resulting shortfall in prisoners with a religious affiliation was equally distributed among the religious groups. The higher level of *No religion* can be ascribed to the large number of prisoners on short sentences who inflate the receptions figures as described above.
47. Non-criminal detainees formed just over 3% of all receptions, but less than 1% of all prison inmates. Detainees under the 1971 Immigration Act comprised the majority of these: 37% of these were *Muslim* (9% of all *Muslim* receptions), 22% were *Other Christians* (20% of all *Other Christian* receptions) and 14% were *Roman Catholic* (1.3% of all *Roman Catholic* receptions)

**Figure 7 - All Initial Receptions by Religion**

January - December 2000, England & Wales



## **Publications of related interest**

Jowell, Roger, John Curtice, Alison Park, Katarina Thomson, Lindsey Jarvis, Catherine Bromley and Nina Stratford (eds.) (2000), ***British Social Attitudes, the 17th Report - Focusing on Diversity***, National Centre for Social Research, Sage Publications, London, ISBN 0 76197 045 2

Weller, Paul, Alice Feldman and Kingsley Purdam (2001), ***Religious Discrimination in England and Wales***, Home Office Research Study 220, RDS, The Home Office, London, ISBN 1 84082 612 6, ISSN 0072 6435

Home Office (2001), ***Prison Statistics England and Wales 2000***, The Stationery Office, London, ISBN 0-10-152502-8

Home Office (2000), ***Prison Statistics England and Wales 1999***, The Stationery Office, London, ISBN 0-10-148052-0

An extensive bibliography and list of resources on religion in England and Wales and in the rest of the UK and Europe may be found at the following website maintained by the University of Surrey  
**[http://qb.soc.surrey.ac.uk/resources/bibliography/relig\\_bib.htm](http://qb.soc.surrey.ac.uk/resources/bibliography/relig_bib.htm)**

**Table 1 Prison population by Religion**

England and Wales

**All Prisoners**

	Numbers		Percentages		Numbers		Percentages	
	Mar-99	Sep-99	Mar-99	Sep-99	Mar-00	Sep-00	Mar-00	Sep-00
<b>All Inmates</b>	<b>64,212</b>	<b>65,614</b>	<b>100</b>	<b>100</b>	<b>65,463</b>	<b>64,960</b>	<b>100</b>	<b>100</b>
<b>Anglican</b>	<b>25,725</b>	<b>25,804</b>	<b>40.1</b>	<b>39.3</b>	<b>25,567</b>	<b>24,985</b>	<b>39.1</b>	<b>38.5</b>
<i>of whom</i>								
<i>Anglican</i>	36	32	0.1	0.0	41	41	0.1	0.1
<i>Church in Wales</i>	21	26	0.0	0.0	35	89	0.1	0.1
<i>Church of England</i>	25,651	25,731	39.9	39.2	25,474	24,843	38.9	38.2
<i>Church of Ireland</i>	15	12	0.0	0.0	15	12	0.0	0.0
<i>Episcopalian</i>	2	3	0.0	0.0	2	1	0.0	0.0
<b>Roman Catholic</b>	<b>11,386</b>	<b>11,424</b>	<b>17.7</b>	<b>17.4</b>	<b>11,327</b>	<b>11,328</b>	<b>17.3</b>	<b>17.4</b>
<b>Free Church</b>	<b>1,158</b>	<b>1,129</b>	<b>1.8</b>	<b>1.7</b>	<b>1,132</b>	<b>1,083</b>	<b>1.7</b>	<b>1.7</b>
<i>of whom</i>								
<i>Baptist</i>	160	162	0.2	0.2	154	151	0.2	0.2
<i>Celestial Church of Goc</i>	17	12	0.0	0.0	14	23	0.0	0.0
<i>Church of Scotland</i>	381	371	0.6	0.6	369	308	0.6	0.5
<i>Congregational</i>	4	5	0.0	0.0	6	3	0.0	0.0
<i>Methodist</i>	333	311	0.5	0.5	298	289	0.5	0.4
<i>Non Conformist</i>	27	27	0.0	0.0	36	34	0.1	0.1
<i>Pentecostal</i>	136	144	0.2	0.2	153	174	0.2	0.3
<i>Presbyterian</i>	28	30	0.0	0.0	33	23	0.1	0.0
<i>Quaker</i>	31	28	0.0	0.0	26	33	0.0	0.1
<i>Salvation Army</i>	25	26	0.0	0.0	27	29	0.0	0.0
<i>United Reformed Churc</i>	7	5	0.0	0.0	8	11	0.0	0.0
<i>Welsh Independent</i>	10	9	0.0	0.0	6	5	0.0	0.0
<b>Other Christian</b>	<b>833</b>	<b>862</b>	<b>1.3</b>	<b>1.3</b>	<b>919</b>	<b>1,114</b>	<b>1.4</b>	<b>1.7</b>
<i>of whom</i>								
<i>Christian Scientist</i>	45	52	0.1	0.1	56	58	0.1	0.1
<i>Church of Jesus Christ</i>	109	132	0.2	0.2	113	134	0.2	0.2
<i>Coptic</i>	1	1	0.0	0.0	1	3	0.0	0.0
<i>Ethiopian Orthodox</i>	21	25	0.0	0.0	22	16	0.0	0.0
<i>Evangelical</i>	6	7	0.0	0.0	4	4	0.0	0.0
<i>Greek/Russian Orthodc</i>	89	76	0.1	0.1	110	109	0.2	0.2
<i>Jehovah's Witness</i>	101	98	0.2	0.1	97	106	0.1	0.2
<i>Seven Day Adventist</i>	38	53	0.1	0.1	60	83	0.1	0.1
<i>Other Christian</i>	203	203	0.3	0.3	261	378	0.4	0.6
<i>Other Protestant</i>	221	215	0.3	0.3	194	224	0.3	0.3
<b>Buddhist</b>	<b>306</b>	<b>303</b>	<b>0.5</b>	<b>0.5</b>	<b>285</b>	<b>378</b>	<b>0.4</b>	<b>0.6</b>
<b>Hindu</b>	<b>243</b>	<b>260</b>	<b>0.4</b>	<b>0.4</b>	<b>246</b>	<b>237</b>	<b>0.4</b>	<b>0.4</b>
<b>Jewish</b>	<b>192</b>	<b>191</b>	<b>0.3</b>	<b>0.3</b>	<b>160</b>	<b>160</b>	<b>0.2</b>	<b>0.2</b>

**Table 1 continued Prison population by Religion**

England and Wales

**All Prisoners**

	Numbers		Percentages		Numbers		Percentages	
	Mar-99	Sep-99	Mar-99	Sep-99	Mar-00	Sep-00	Mar-00	Sep-00
<b>All Inmates</b>	<b>64,212</b>	<b>65,614</b>	<b>100</b>	<b>100</b>	<b>65,463</b>	<b>64,960</b>	<b>100</b>	<b>100</b>
<b>Muslim</b>	<b>4,311</b>	<b>4,301</b>	<b>6.7</b>	<b>6.6</b>	<b>4,298</b>	<b>4,646</b>	<b>6.6</b>	<b>7.2</b>
<b>Sikh</b>	<b>447</b>	<b>418</b>	<b>0.7</b>	<b>0.6</b>	<b>394</b>	<b>431</b>	<b>0.6</b>	<b>0.7</b>
<b>Other</b>	<b>92</b>	<b>83</b>	<b>0.1</b>	<b>0.1</b>	<b>89</b>	<b>107</b>	<b>0.1</b>	<b>0.2</b>
<i>of whom</i>								
<i>Ba Hai</i>	4	2	0.0	0.0	1	1	0.0	0.0
<i>Druid</i>	4	3	0.0	0.0	4	5	0.0	0.0
<i>Jain</i>	0	3	-	0.0	3	3	0.0	0.0
<i>Pagan</i>	50	42	0.1	0.1	36	62	0.1	0.1
<i>Spiritualist</i>	20	20	0.0	0.0	22	22	0.0	0.0
<i>Taoist</i>	4	4	0.0	0.0	4	3	0.0	0.0
<i>Zoroastrian</i>	3	1	0.0	0.0	2	1	0.0	0.0
<i>Other non-Christian reli</i>	7	8	0.0	0.0	17	10	0.0	0.0
<b>Non-recognised</b>	<b>145</b>	<b>156</b>	<b>0.2</b>	<b>0.2</b>	<b>152</b>	<b>178</b>	<b>0.2</b>	<b>0.3</b>
<i>of whom</i>								
<i>Nation of Islam</i>	9	5	0.0	0.0	9	4	0.0	0.0
<i>Rastafarian</i>	132	147	0.2	0.2	140	174	0.2	0.3
<i>Scientology</i>	3	3	0.0	0.0	2	0	0.0	-
<i>other</i>	1	1	0.0	0.0	1	0	0.0	-
<b>No Religion</b>	<b>19,370</b>	<b>20,679</b>	<b>30.2</b>	<b>31.5</b>	<b>20,888</b>	<b>20,304</b>	<b>31.9</b>	<b>31.3</b>
<i>of whom</i>								
<i>Agnostic</i>	79	76	0.1	0.1	62	64	0.1	0.1
<i>Atheist</i>	129	135	0.2	0.2	122	119	0.2	0.2
<i>No religion</i>	19,162	20,469	29.8	31.2	20,703	20,121	31.6	31.0
<b>Not recorded</b>	<b>3</b>	<b>5</b>	<b>0.0</b>	<b>0.0</b>	<b>7</b>	<b>8</b>	<b>0.0</b>	<b>0.0</b>

Note: Values of 0.0 in the percentage columns indicate that the corresponding religion or faith group accounts for less than half of one percent of the total prison population at the time of record



**Table 2 Religion and Gender**

England and Wales

	Numbers		Percentages		Percentages		Numbers		Percentages		Percentages	
	Mar-99	Sep-99	Mar-99	Sep-99	Mar-99	Sep-99	Mar-00	Sep-00	Mar-00	Sep-00	Mar-00	Sep-00
<b>All Male Inmates</b>	<b>61,000</b>	<b>62,230</b>	<b>100</b>	<b>100</b>			<b>62,084</b>	<b>61,524</b>	<b>100</b>	<b>100</b>		
<b>Inmates with declared religion</b>	<b>42,337</b>	<b>42,332</b>	<b>69.4</b>	<b>68.0</b>	<b>100</b>	<b>100</b>	<b>41,969</b>	<b>42,078</b>	<b>67.6</b>	<b>68.4</b>	<b>100</b>	<b>100</b>
<i>of whom</i>												
<i>Anglican</i>	24,340	24,305	39.9	39.1	57.5	57.4	24,003	23,509	38.7	38.2	57.2	55.9
<i>Roman Catholic</i>	10,571	10,632	17.3	17.1	25.0	25.1	10,577	10,552	17.0	17.2	25.2	25.1
<i>Free Church</i>	1,044	1,012	1.7	1.6	2.5	2.4	1,027	965	1.7	1.6	2.4	2.3
<i>Other Christian</i>	798	820	1.3	1.3	1.9	1.9	866	1,050	1.4	1.7	2.1	2.5
<i>Buddhist</i>	296	292	0.5	0.5	0.7	0.7	276	371	0.4	0.6	0.7	0.9
<i>Hindu</i>	233	241	0.4	0.4	0.6	0.6	236	232	0.4	0.4	0.6	0.6
<i>Jewish</i>	184	181	0.3	0.3	0.4	0.4	154	156	0.2	0.3	0.4	0.4
<i>Muslim</i>	4,202	4,209	6.9	6.8	9.9	9.9	4,205	4,545	6.8	7.4	10.0	10.8
<i>Sikh</i>	438	408	0.7	0.7	1.0	1.0	390	424	0.6	0.7	0.9	1.0
<i>Other</i>	90	80	0.1	0.1	0.2	0.2	86	102	0.1	0.2	0.2	0.2
<i>Non-recognised</i>	142	152	0.2	0.2	0.3	0.4	147	173	0.2	0.3	0.4	0.4
<b>No Religion</b>	<b>18,661</b>	<b>19,894</b>	<b>30.6</b>	<b>32.0</b>			<b>20,110</b>	<b>19,439</b>	<b>32.4</b>	<b>31.6</b>		
<b>Not recorded</b>	<b>2</b>	<b>4</b>	<b>0.0</b>	<b>0.0</b>			<b>6</b>	<b>7</b>	<b>0.0</b>	<b>0.0</b>		
	Numbers		Percentages		Percentages		Numbers		Percentages		Percentages	
	Mar-99	Sep-99	Mar-99	Sep-99	Mar-99	Sep-99	Mar-00	Sep-00	Mar-00	Sep-00	Mar-00	Sep-00
<b>All Female Inmates</b>	<b>3,212</b>	<b>3,384</b>	<b>100</b>	<b>100</b>			<b>3,370</b>	<b>3,436</b>	<b>100</b>	<b>100</b>		
<b>Inmates with declared religion</b>	<b>2,501</b>	<b>2,598</b>	<b>77.9</b>	<b>76.8</b>	<b>100</b>	<b>100</b>	<b>2,599</b>	<b>2,570</b>	<b>77.1</b>	<b>74.8</b>	<b>100</b>	<b>100</b>
<i>of whom</i>												
<i>Anglican</i>	1,385	1,499	43.1	44.3	3.3	3.5	1,564	1,477	46.4	43.0	60.2	57.5
<i>Roman Catholic</i>	816	792	25.4	23.4	1.9	1.9	749	776	22.2	22.6	28.8	30.2
<i>Free Church</i>	114	117	3.5	3.4	0.3	0.3	104	118	3.1	3.4	4.0	4.6
<i>Other Christian</i>	36	42	1.1	1.2	0.1	0.1	53	65	1.6	1.9	2.0	2.5
<i>Buddhist</i>	10	11	0.3	0.3	0.0	0.0	9	7	0.3	0.2	0.3	0.3
<i>Hindu</i>	10	19	0.3	0.6	0.0	0.0	10	5	0.3	0.1	0.4	0.2
<i>Jewish</i>	8	10	0.2	0.3	0.0	0.0	5	4	0.1	0.1	0.2	0.2
<i>Muslim</i>	109	92	3.4	2.7	0.3	0.2	92	102	2.7	3.0	3.6	4.0
<i>Sikh</i>	9	10	0.3	0.3	0.0	0.0	4	7	0.1	0.2	0.2	0.3
<i>Other</i>	2	3	0.1	0.1	0.0	0.0	3	5	0.1	0.1	0.1	0.2
<i>Non-recognised</i>	3	4	0.1	0.1	0.0	0.0	5	5	0.1	0.1	0.2	0.2
<b>No Religion</b>	<b>710</b>	<b>785</b>	<b>22.1</b>	<b>23.2</b>			<b>769</b>	<b>865</b>	<b>22.8</b>	<b>25.2</b>		
<b>Not recorded</b>	<b>1</b>	<b>1</b>	<b>0.0</b>	<b>0.0</b>			<b>1</b>	<b>1</b>	<b>0.0</b>	<b>0.0</b>		





**Table 4a Religion, Gender and Age**

September 1999, England and Wales

	Total	Numbers									
		15 - 17 years	18-20 years	21 years	22- 24 years	25-29 years	30 - 39 years	40 - 49 years	50 - 59 years	60 and over	Age not known
<b>All Male Inmates</b>	<b>62,230</b>	<b>2,267</b>	<b>7,952</b>	<b>604</b>	<b>10,036</b>	<b>12,800</b>	<b>17,648</b>	<b>6,678</b>	<b>3,054</b>	<b>1,190</b>	<b>0</b>
<b>Inmates with declared religion</b>	<b>42,332</b>	<b>873</b>	<b>3,785</b>	<b>312</b>	<b>6,067</b>	<b>8,886</b>	<b>13,406</b>	<b>5,464</b>	<b>2,525</b>	<b>1,013</b>	<b>0</b>
<i>of whom</i>											
<i>Anglican</i>	24305	476	2082	177	3531	5266	7562	3007	1563	642	0
<i>Roman Catholic</i>	10632	276	1122	83	1526	2184	3374	1347	534	186	0
<i>Free Church</i>	1012	6	25	2	62	128	356	224	128	82	0
<i>Other Christian</i>	820	9	58	4	82	151	280	149	57	31	0
<i>Buddhist</i>	292	-	9	1	25	41	112	67	30	8	0
<i>Hindu</i>	241	5	17	3	45	50	51	49	16	6	0
<i>Jewish</i>	181	-	1	-	10	18	60	41	42	9	0
<i>Muslim</i>	4209	91	420	36	695	928	1395	473	127	45	0
<i>Sikh</i>	408	7	43	7	72	84	114	60	19	3	0
<i>Other</i>	80	-	3	-	5	19	26	20	5	2	0
<i>Non-recognised</i>	152	3	6	-	15	19	76	28	5	-	0
<b>No Religion</b>	<b>19,894</b>	<b>1,394</b>	<b>4,166</b>	<b>292</b>	<b>3,969</b>	<b>3,913</b>	<b>4,241</b>	<b>1,214</b>	<b>529</b>	<b>176</b>	<b>0</b>
<b>Not recorded</b>	<b>4</b>	<b>0</b>	<b>0</b>	<b>0</b>	<b>0</b>	<b>1</b>	<b>1</b>	<b>0</b>	<b>1</b>	<b>1</b>	<b>0</b>

	Total	Numbers									
		15 - 17 years	18-20 years	21 years	22- 24 years	25-29 years	30 - 39 years	40 - 49 years	50 - 59 years	60 and over	Age not known
<b>All Female Inmates</b>	<b>3,384</b>	<b>99</b>	<b>363</b>	<b>22</b>	<b>541</b>	<b>752</b>	<b>1,064</b>	<b>38</b>	<b>126</b>	<b>21</b>	<b>359</b>
<b>Inmates with declared religion</b>	<b>2,598</b>	<b>60</b>	<b>227</b>	<b>14</b>	<b>366</b>	<b>571</b>	<b>864</b>	<b>29</b>	<b>120</b>	<b>19</b>	<b>329</b>
<i>of whom</i>											
<i>Anglican</i>	1499	39	159	9	208	322	485	8	69	11	190
<i>Roman Catholic</i>	792	15	59	4	116	190	264	4	25	6	110
<i>Free Church</i>	117	1	1	-	10	26	47	2	9	1	20
<i>Other Christian</i>	42	2	-	-	6	5	19	8	2	-	-
<i>Buddhist</i>	11	-	-	1	-	1	6	2	1	-	-
<i>Hindu</i>	19	-	2	-	6	2	6	1	2	-	-
<i>Jewish</i>	10	-	-	-	-	-	5	2	3	-	-
<i>Muslim</i>	92	3	6	-	19	19	28	-	7	-	10
<i>Sikh</i>	10	-	1	-	1	3	1	1	2	1	-
<i>Other</i>	3	-	-	-	-	1	2	-	-	-	-
<i>Non-recognised</i>	4	-	-	-	-	2	1	1	-	-	-
<b>No Religion</b>	<b>785</b>	<b>39</b>	<b>136</b>	<b>8</b>	<b>175</b>	<b>182</b>	<b>199</b>	<b>9</b>	<b>6</b>	<b>2</b>	<b>30</b>
<b>Not recorded</b>	<b>1</b>	<b>0</b>	<b>0</b>	<b>0</b>	<b>0</b>	<b>0</b>	<b>1</b>	<b>0</b>	<b>0</b>	<b>0</b>	<b>0</b>

**Table 4b Religion, Gender and Age**

September 2000, England and Wales

		Numbers								
	Total	15 - 17 years	18-20 years	21 years	22- 24 years	25-29 years	30 - 39 years	40 - 49 years	50 - 59 years	60 and over
<b>All Male Inmates</b>	<b>61,524</b>	<b>2,352</b>	<b>7,602</b>	<b>631</b>	<b>10,290</b>	<b>12,222</b>	<b>17,325</b>	<b>6,833</b>	<b>2,993</b>	<b>1,277</b>
<b>Inmates with declared religion</b>	<b>42,078</b>	<b>940</b>	<b>3,718</b>	<b>351</b>	<b>6,308</b>	<b>8,428</b>	<b>13,224</b>	<b>5,558</b>	<b>2,476</b>	<b>1,075</b>
<i>of whom</i>										
<i>Anglican</i>	23509	505	1903	182	3457	4844	7349	3046	1547	676
<i>Roman Catholic</i>	10552	267	1161	92	1679	2037	3282	1332	515	187
<i>Free Church</i>	965	8	25	8	54	108	314	229	128	91
<i>Other Christian</i>	1050	25	67	6	135	200	358	177	55	28
<i>Buddhist</i>	371	0	4	2	25	63	152	80	36	10
<i>Hindu</i>	232	3	13	2	34	50	71	39	14	7
<i>Jewish</i>	156	1	4	0	5	12	44	41	37	12
<i>Muslim</i>	4545	115	488	55	821	970	1429	497	116	55
<i>Sikh</i>	424	8	44	4	73	90	123	61	18	4
<i>Other</i>	102	2	1	0	8	23	31	24	9	4
<i>Non-recognised</i>	173	6	8	1	17	32	72	33	3	1
<b>No Religion</b>	<b>19,439</b>	<b>1,412</b>	<b>3,884</b>	<b>279</b>	<b>3,982</b>	<b>3,793</b>	<b>4,099</b>	<b>1,274</b>	<b>514</b>	<b>202</b>
<b>Not recorded</b>	<b>7</b>	<b>0</b>	<b>0</b>	<b>0</b>	<b>0</b>	<b>1</b>	<b>2</b>	<b>0</b>	<b>3</b>	<b>1</b>

		Numbers								
	Total	15 - 17 years	18-20 years	21 years	22- 24 years	25-29 years	30 - 39 years	40 - 49 years	50 - 59 years	60 and over
<b>All Female Inmates</b>	<b>3,436</b>	<b>103</b>	<b>355</b>	<b>29</b>	<b>572</b>	<b>723</b>	<b>1,071</b>	<b>442</b>	<b>117</b>	<b>25</b>
<b>Inmates with declared religion</b>	<b>2,570</b>	<b>46</b>	<b>221</b>	<b>15</b>	<b>388</b>	<b>537</b>	<b>861</b>	<b>374</b>	<b>108</b>	<b>21</b>
<i>of whom</i>										
<i>Anglican</i>	1477	23	142	12	230	318	473	211	60	8
<i>Roman Catholic</i>	776	17	59	1	114	162	277	110	29	8
<i>Free Church</i>	118	2	4	1	10	21	46	25	7	2
<i>Other Christian</i>	65	1	8	0	7	14	25	7	3	0
<i>Buddhist</i>	7	0	0	0	2	1	2	1	1	0
<i>Hindu</i>	5	0	2	0	1	2	0	0	0	0
<i>Jewish</i>	4	0	0	0	0	0	0	1	3	0
<i>Muslim</i>	102	2	6	1	20	17	35	15	4	2
<i>Sikh</i>	7	0	0	0	2	0	1	2	1	1
<i>Other</i>	5	1	0	0	1	1	1	1	0	0
<i>Non-recognised</i>	5	0	0	0	1	1	1	2	0	0
<b>No Religion</b>	<b>865</b>	<b>57</b>	<b>135</b>	<b>14</b>	<b>184</b>	<b>187</b>	<b>209</b>	<b>68</b>	<b>9</b>	<b>4</b>
<b>Not recorded</b>	<b>1</b>	<b>0</b>	<b>0</b>	<b>0</b>	<b>0</b>	<b>0</b>	<b>1</b>	<b>0</b>	<b>0</b>	<b>0</b>



**Table 6a Religion and Sentence length - Sentenced Prisoners**

September 1999, England and Wales

All Prisoners	Total	Number												Not recorded	
		1 mth or less	> 1 mth upto 3 mths	> 3 mths upto 6 mths	> 6 mths upto 12 mths	12 mths	> 12 mths upto 18 mths	> 18 mths upto 3 yrs	> 3 yrs upto 4 yrs	4 yrs	> 4 yrs upto 5 yrs	> 5 yrs upto 10 yrs	> 10 yrs upto Life		Life
<b>All Sentenced Inmates</b>	<b>52,393</b>	<b>331</b>	<b>1,902</b>	<b>4,098</b>	<b>2,270</b>	<b>1,703</b>	<b>3,760</b>	<b>10,849</b>	<b>3,116</b>	<b>3,504</b>	<b>4,965</b>	<b>9,163</b>	<b>2,355</b>	<b>4,353</b>	<b>24</b>
<b>Inmates with declared religion</b>	<b>36,520</b>	<b>212</b>	<b>1,166</b>	<b>2,521</b>	<b>1,376</b>	<b>1,057</b>	<b>2,378</b>	<b>7,142</b>	<b>2,121</b>	<b>2,451</b>	<b>3,654</b>	<b>7,092</b>	<b>1,947</b>	<b>3,385</b>	<b>19</b>
<i>of whom</i>															
<i>Anglican</i>	21,243	123	709	1571	855	657	1455	4331	1271	1450	2163	3818	921	1911	7
<i>Free Church</i>	969	3	20	51	16	16	45	140	24	70	93	271	58	161	2
<i>Other Christian</i>	600	1	10	35	18	13	21	96	22	43	53	158	40	92	0
<i>Roman Catholic</i>	9,246	58	326	650	382	274	624	1793	583	569	883	1834	499	762	9
<i>Buddhist</i>	252	0	2	1	7	3	10	24	9	17	16	55	27	81	1
<i>Hindu</i>	199	0	10	6	8	10	17	49	8	18	14	33	10	17	0
<i>Jewish</i>	168	0	6	6	4	3	10	30	4	14	17	29	19	26	0
<i>Muslim</i>	3,317	19	72	173	72	68	169	562	171	240	361	805	344	262	0
<i>Sikh</i>	325	7	10	18	10	11	19	83	15	14	33	38	17	51	0
<i>Other</i>	74	1	0	6	3	0	3	10	4	7	2	16	5	17	0
<i>Non-recognised</i>	128	1	1	4	2	2	5	25	11	9	19	35	8	6	0
<b>No Religion</b>	<b>15,868</b>	<b>119</b>	<b>736</b>	<b>1,577</b>	<b>894</b>	<b>645</b>	<b>1,382</b>	<b>3,707</b>	<b>995</b>	<b>1,053</b>	<b>1,312</b>	<b>2,071</b>	<b>408</b>	<b>965</b>	<b>5</b>
<b>Not recorded</b>	<b>4</b>	<b>0</b>	<b>0</b>	<b>0</b>	<b>0</b>	<b>0</b>	<b>0</b>	<b>1</b>	<b>0</b>	<b>0</b>	<b>0</b>	<b>0</b>	<b>0</b>	<b>3</b>	<b>0</b>

All Prisoners	Total	Percent													
		1 mth or less	> 1 mth upto 3 mths	> 3 mths upto 6 mths	> 6 mths upto 12 mths	12 mths	> 12 mths upto 18 mths	> 18 mths upto 3 yrs	> 3 yrs upto 4 yrs	4 yrs	> 4 yrs upto 5 yrs	> 5 yrs upto 10 yrs	> 10 yrs upto Life	Life	Blank
<b>All Sentenced Inmates</b>	<b>100</b>	<b>1</b>	<b>4</b>	<b>8</b>	<b>4</b>	<b>3</b>	<b>7</b>	<b>21</b>	<b>6</b>	<b>7</b>	<b>9</b>	<b>17</b>	<b>4</b>	<b>8</b>	<b>0</b>
<b>Inmates with declared religion</b>	<b>100</b>	<b>1</b>	<b>3</b>	<b>7</b>	<b>4</b>	<b>3</b>	<b>7</b>	<b>20</b>	<b>6</b>	<b>7</b>	<b>10</b>	<b>19</b>	<b>5</b>	<b>9</b>	<b>0</b>
<i>of whom</i>															
<i>Anglican</i>	100	1	3	7	4	3	7	20	6	7	10	18	4	9	0
<i>Free Church</i>	100	0	2	5	2	2	5	14	2	7	10	28	6	17	0
<i>Other Christian</i>	100	0	2	6	3	2	3	16	4	7	9	26	7	15	0
<i>Roman Catholic</i>	100	1	4	7	4	3	7	19	6	6	10	20	5	8	0
<i>Buddhist</i>	100	0	1	0	3	1	4	9	4	7	6	22	11	32	0
<i>Hindu</i>	100	0	5	3	4	5	9	25	4	9	7	17	5	9	0
<i>Jewish</i>	100	0	4	4	2	2	6	18	2	8	10	17	11	15	0
<i>Muslim</i>	100	1	2	5	2	2	5	17	5	7	11	24	10	8	0
<i>Sikh</i>	100	2	3	6	3	3	6	25	5	4	10	12	5	16	0
<i>Other</i>	100	1	0	8	4	0	4	14	5	9	3	22	7	23	0
<i>Non-recognised</i>	100	1	1	3	2	2	4	20	9	7	15	27	6	5	0
<b>No Religion</b>	<b>100</b>	<b>1</b>	<b>5</b>	<b>10</b>	<b>6</b>	<b>4</b>	<b>9</b>	<b>23</b>	<b>6</b>	<b>7</b>	<b>8</b>	<b>13</b>	<b>3</b>	<b>6</b>	<b>0</b>

**Table 6b Religion and Sentence length - Sentenced Prisoners**

September 2000, England and Wales

All Prisoners	Total	Number													Not recorded
		1 mth or less	> 1 mth upto 3 mths	> 3 mths upto 6 mths	> 6 mths upto 12 mths	12 mths	> 12 mths upto 18 mths	> 18 mths upto 3 yrs	> 3 yrs upto 4 yrs	4 yrs	> 4 yrs upto 5 yrs	> 5 yrs upto 10 yrs	> 10 yrs upto Life	Life	
<b>All Sentenced Inmates</b>	<b>53,220</b>	<b>301</b>	<b>1,527</b>	<b>4,431</b>	<b>2,445</b>	<b>1,857</b>	<b>3,664</b>	<b>10,714</b>	<b>3,493</b>	<b>3,287</b>	<b>4,959</b>	<b>9,403</b>	<b>2,458</b>	<b>4,668</b>	<b>13</b>
<b>Inmates with declared religion</b>	<b>36,949</b>	<b>194</b>	<b>944</b>	<b>2,589</b>	<b>1,523</b>	<b>1,090</b>	<b>2,313</b>	<b>7,100</b>	<b>2,414</b>	<b>2,314</b>	<b>3,662</b>	<b>7,201</b>	<b>2,037</b>	<b>3,561</b>	<b>10</b>
<i>of whom</i>															
<i>Anglican</i>	21080	102	566	1584	954	663	1390	4202	1428	1362	2104	3799	950	1971	5
<i>Free Church</i>	921	1	11	32	12	18	46	123	34	57	113	255	57	163	0
<i>Other Christian</i>	809	3	16	58	29	19	35	131	36	43	77	213	52	99	0
<i>Roman Catholic</i>	9396	69	258	663	383	256	605	1863	653	549	883	1861	533	817	4
<i>Buddhist</i>	334	0	3	6	4	2	12	33	16	18	29	70	42	100	0
<i>Hindu</i>	176	1	8	13	5	5	14	33	3	14	19	34	10	17	0
<i>Jewish</i>	134	0	2	4	4	1	7	22	3	8	17	23	18	25	0
<i>Muslim</i>	3558	15	68	186	116	113	173	602	213	236	361	849	344	282	1
<i>Sikh</i>	313	2	8	36	9	8	20	58	18	12	31	39	20	53	0
<i>Other</i>	93	1	2	5	3	1	7	15	4	3	5	19	1	27	0
<i>Non-recognised</i>	136	0	2	3	4	3	5	19	7	12	23	39	11	8	0
<b>No Religion</b>	<b>16,264</b>	<b>108</b>	<b>583</b>	<b>1,842</b>	<b>923</b>	<b>767</b>	<b>1,351</b>	<b>3,613</b>	<b>1,080</b>	<b>972</b>	<b>1,297</b>	<b>2,202</b>	<b>421</b>	<b>1,104</b>	<b>3</b>
<b>Not recorded</b>	<b>6</b>	<b>0</b>	<b>0</b>	<b>0</b>	<b>0</b>	<b>0</b>	<b>0</b>	<b>1</b>	<b>0</b>	<b>1</b>	<b>0</b>	<b>0</b>	<b>0</b>	<b>4</b>	<b>0</b>

All Prisoners	Total	Percent													Percent Blank
		1 mth or less	> 1 mth upto 3 mths	> 3 mths upto 6 mths	> 6 mths upto 12 mths	12 mths	> 12 mths upto 18 mths	> 18 mths upto 3 yrs	> 3 yrs upto 4 yrs	4 yrs	> 4 yrs upto 5 yrs	> 5 yrs upto 10 yrs	> 10 yrs upto Life	Life	
<b>All Sentenced Inmates</b>	<b>100</b>	<b>1</b>	<b>3</b>	<b>8</b>	<b>5</b>	<b>3</b>	<b>7</b>	<b>20</b>	<b>7</b>	<b>6</b>	<b>9</b>	<b>18</b>	<b>5</b>	<b>9</b>	<b>0</b>
<b>Inmates with declared religion</b>	<b>100</b>	<b>1</b>	<b>3</b>	<b>7</b>	<b>4</b>	<b>3</b>	<b>6</b>	<b>19</b>	<b>7</b>	<b>6</b>	<b>10</b>	<b>19</b>	<b>6</b>	<b>10</b>	<b>0</b>
<i>of whom</i>															
<i>Anglican</i>	100	0	3	8	5	3	7	20	7	6	10	18	5	9	0
<i>Free Church</i>	100	0	1	3	1	2	5	13	4	6	12	28	6	18	0
<i>Other Christian</i>	100	0	2	7	4	2	4	16	4	5	9	26	6	12	0
<i>Roman Catholic</i>	100	1	3	7	4	3	6	20	7	6	9	20	6	9	0
<i>Buddhist</i>	100	0	1	2	1	1	4	10	5	5	9	21	13	30	0
<i>Hindu</i>	100	1	5	7	3	3	8	19	2	8	11	19	6	10	0
<i>Jewish</i>	100	0	1	3	3	1	5	16	2	6	13	17	13	19	0
<i>Muslim</i>	100	0	2	5	3	3	5	17	6	7	10	24	10	8	0
<i>Sikh</i>	100	1	3	11	3	3	6	18	6	4	10	12	6	17	0
<i>Other</i>	100	1	2	5	3	1	8	16	4	3	5	20	1	29	0
<i>Non-recognised</i>	100	0	1	2	3	2	4	14	5	9	17	29	8	6	0
<b>No Religion</b>	<b>100</b>	<b>1</b>	<b>4</b>	<b>11</b>	<b>6</b>	<b>5</b>	<b>8</b>	<b>22</b>	<b>7</b>	<b>6</b>	<b>8</b>	<b>14</b>	<b>3</b>	<b>7</b>	<b>0</b>



**Table 7a Prison population by Religion and Type of Establishment**

September 1999, England & Wales

Numbers

All Prisoners	Total	Remand Centres	Local Prisons	Training prisons		Young Offenders Institutions		
				Open	Closed	Open	Closed	Juvenile
				<b>All Inmates</b>	<b>65,614</b>	<b>4,365</b>	<b>25,731</b>	<b>4,136</b>
<b>Inmates with declared religion</b>	<b>44,930</b>	<b>2,002</b>	<b>17,937</b>	<b>3,242</b>	<b>18,504</b>	<b>218</b>	<b>2,418</b>	<b>609</b>
<i>of whom</i>								
<i>Anglican</i>	25,804	1,011	10,447	1,961	10,566	129	1,361	329
<i>Roman Catholic</i>	11,424	600	4,630	705	4,542	61	692	193
<i>Free Church</i>	1,129	13	394	97	603	5	12	5
<i>Other Christian</i>	862	61	362	43	352	3	35	6
<i>Buddhist</i>	303	5	86	20	185	0	8	0
<i>Hindu</i>	260	20	88	54	82	1	14	2
<i>Jewish</i>	191	0	68	29	93	0	1	0
<i>Muslim</i>	4,301	254	1,621	263	1,821	18	254	69
<i>Sikh</i>	418	33	140	63	141	2	36	4
<i>Other</i>	83	1	30	5	45	0	2	0
<i>Non-recognised</i>	156	3	72	2	74	0	3	2
<b>No Religion</b>	<b>20,679</b>	<b>2,363</b>	<b>7,791</b>	<b>894</b>	<b>6,121</b>	<b>211</b>	<b>2,315</b>	<b>983</b>
<b>Not recorded</b>	<b>5</b>	<b>0</b>	<b>3</b>	<b>1</b>	<b>1</b>	<b>0</b>	<b>0</b>	<b>0</b>

Percent

All Prisoners	Total	Remand Centres	Local Prisons	Training prisons		Young Offenders Institutions		
				Open	Closed	Open	Closed	Juvenile
				<b>All Inmates</b>	<b>100</b>	<b>7</b>	<b>39</b>	<b>6</b>
<b>Inmates with declared religion</b>	<b>100</b>	<b>4</b>	<b>40</b>	<b>7</b>	<b>41</b>	<b>0</b>	<b>5</b>	<b>1</b>
<i>of whom</i>								
<i>Anglican</i>	100	3.9	40.5	7.6	40.9	0.5	5.3	1.3
<i>Roman Catholic</i>	100	5.3	40.5	6.2	39.8	0.5	6.1	1.7
<i>Free Church</i>	100	1.1	34.9	8.6	53.4	0.4	1.1	0.4
<i>Other Christian</i>	100	7.1	42.0	5.0	40.9	0.3	4.1	0.7
<i>Buddhist</i>	100	1.6	28.3	6.6	60.9	0.0	2.6	0.0
<i>Hindu</i>	100	7.7	33.7	20.7	31.4	0.4	5.4	0.8
<i>Jewish</i>	100	0.0	35.6	15.2	48.7	0.0	0.5	0.0
<i>Muslim</i>	100	5.9	37.7	6.1	42.3	0.4	5.9	1.6
<i>Sikh</i>	100	7.9	33.4	15.0	33.7	0.5	8.6	1.0
<i>Other</i>	100	1.2	36.1	6.0	54.2	0.0	2.4	0.0
<i>Non-recognised</i>	100	1.9	46.2	1.3	47.4	0.0	1.9	1.3
<b>No Religion</b>	<b>100</b>	<b>11</b>	<b>38</b>	<b>4</b>	<b>30</b>	<b>1</b>	<b>11</b>	<b>5</b>

Percent

All Prisoners	Total	Remand Centres	Local Prisons	Training prisons		Young Offenders Institutions		
				Open	Closed	Open	Closed	Juvenile
				<b>All Inmates</b>	<b>100</b>	<b>100</b>	<b>100</b>	<b>100</b>
<b>Inmates with declared religion</b>	<b>68</b>	<b>46</b>	<b>70</b>	<b>78</b>	<b>75</b>	<b>51</b>	<b>51</b>	<b>38</b>
<i>of whom</i>								
<i>Anglican</i>	39.3	23.2	40.6	47.4	42.9	29.9	28.7	20.7
<i>Roman Catholic</i>	17.4	13.8	18.0	17.0	18.4	14.2	14.6	12.1
<i>Free Church</i>	1.7	0.3	1.5	2.3	2.5	1.2	0.3	0.3
<i>Other Christian</i>	1.3	1.4	1.4	1.0	1.4	0.7	0.7	0.4
<i>Buddhist</i>	0.5	0.1	0.3	0.5	0.7	0.0	0.2	0.0
<i>Hindu</i>	0.4	0.5	0.3	1.3	0.3	0.2	0.3	0.1
<i>Jewish</i>	0.3	0.0	0.3	0.7	0.4	0.0	0.0	0.0
<i>Muslim</i>	6.6	5.8	6.3	6.4	7.4	4.2	5.4	4.3
<i>Sikh</i>	0.6	0.8	0.5	1.5	0.6	0.5	0.8	0.3
<i>Other</i>	0.1	0.0	0.1	0.1	0.2	0.0	0.0	0.0
<i>Non-recognised</i>	0.2	0.1	0.3	0.0	0.3	0.0	0.1	0.1
<b>No Religion</b>	<b>32</b>	<b>54</b>	<b>30</b>	<b>22</b>	<b>25</b>	<b>49</b>	<b>49</b>	<b>62</b>

**Table 7b Prison population by Religion and Type of Establishment**

September 2000, England & Wales

Numbers

All Prisoners	Total	Remand Centres	Local Prisons	Training prisons		Young Offenders Institutions		
				Open	Closed	Open	Closed	Juvenile
				<b>All Inmates</b>	<b>64,960</b>	<b>3,408</b>	<b>24,312</b>	<b>3,839</b>
<b>Inmates with declared religion</b>	<b>44,648</b>	<b>1,616</b>	<b>17,166</b>	<b>2,965</b>	<b>19,103</b>	<b>195</b>	<b>2,671</b>	<b>932</b>
<i>of whom</i>								
<i>Anglican</i>	24,985	696	9,746	1,781	10,728	94	1,444	497
<i>Roman Catholic</i>	11,328	469	4,369	684	4,691	60	783	271
<i>Free Church</i>	1,083	15	369	76	592	1	22	8
<i>Other Christian</i>	1,114	63	443	54	472	4	55	24
<i>Buddhist</i>	378	4	101	24	245	0	4	0
<i>Hindu</i>	237	22	86	39	79	1	9	2
<i>Jewish</i>	160	3	55	15	85	0	2	0
<i>Muslim</i>	4,646	290	1,729	235	1,930	28	317	117
<i>Sikh</i>	431	48	159	46	137	6	29	7
<i>Other</i>	107	0	36	7	60	0	2	2
<i>Non-recognised</i>	178	6	74	4	85	1	4	4
<b>No Religion</b>	<b>20,304</b>	<b>1,792</b>	<b>7,143</b>	<b>874</b>	<b>6,528</b>	<b>199</b>	<b>2,406</b>	<b>1,363</b>
<b>Not recorded</b>	<b>8</b>	<b>0</b>	<b>3</b>	<b>0</b>	<b>4</b>	<b>0</b>	<b>1</b>	<b>0</b>

Percent

All Prisoners	Total	Remand Centres	Local Prisons	Training prisons		Young Offenders Institutions		
				Open	Closed	Open	Closed	Juvenile
				<b>All Inmates</b>	<b>100</b>	<b>5</b>	<b>37</b>	<b>6</b>
<b>Inmates with declared religion</b>	<b>100</b>	<b>4</b>	<b>38</b>	<b>7</b>	<b>43</b>	<b>0</b>	<b>6</b>	<b>2</b>
<i>of whom</i>								
<i>Anglican</i>	100	2.8	39.0	7.1	42.9	0.4	5.8	2.0
<i>Roman Catholic</i>	100	4.1	38.6	6.0	41.4	0.5	6.9	2.4
<i>Free Church</i>	100	1.4	34.1	7.0	54.7	0.1	2.0	0.7
<i>Other Christian</i>	100	5.6	39.7	4.8	42.3	0.4	4.9	2.1
<i>Buddhist</i>	100	1.1	26.6	6.3	64.9	0.0	1.1	0.0
<i>Hindu</i>	100	9.2	36.1	16.4	33.2	0.4	3.8	0.8
<i>Jewish</i>	100	1.9	34.4	9.4	53.1	0.0	1.3	0.0
<i>Muslim</i>	100	6.2	37.2	5.1	41.5	0.6	6.8	2.5
<i>Sikh</i>	100	11.1	36.8	10.6	31.7	1.4	6.7	1.6
<i>Other</i>	100	0.0	33.6	6.5	56.1	0.0	1.9	1.9
<i>Non-recognised</i>	100	3.4	41.6	2.2	47.8	0.6	2.2	2.2
<b>No Religion</b>	<b>100</b>	<b>9</b>	<b>35</b>	<b>4</b>	<b>32</b>	<b>1</b>	<b>12</b>	<b>7</b>

Percent

All Prisoners	Total	Remand Centres	Local Prisons	Training prisons		Young Offenders Institutions		
				Open	Closed	Open	Closed	Juvenile
				<b>All Inmates</b>	<b>100</b>	<b>100</b>	<b>100</b>	<b>100</b>
<b>Inmates with declared religion</b>	<b>69</b>	<b>47</b>	<b>71</b>	<b>77</b>	<b>75</b>	<b>49</b>	<b>53</b>	<b>41</b>
<i>of whom</i>								
<i>Anglican</i>	38.5	20.4	40.1	46.4	41.8	23.9	28.4	21.7
<i>Roman Catholic</i>	17.4	13.8	18.0	17.8	18.3	15.2	15.4	11.8
<i>Free Church</i>	1.7	0.4	1.5	2.0	2.3	0.3	0.4	0.3
<i>Other Christian</i>	1.7	1.8	1.8	1.4	1.8	1.0	1.1	1.0
<i>Buddhist</i>	0.6	0.1	0.4	0.6	1.0	0.0	0.1	0.0
<i>Hindu</i>	0.4	0.6	0.4	1.0	0.3	0.3	0.2	0.1
<i>Jewish</i>	0.2	0.1	0.2	0.4	0.3	0.0	0.0	0.0
<i>Muslim</i>	7.2	8.5	7.1	6.1	7.5	7.1	6.2	5.1
<i>Sikh</i>	0.7	1.4	0.7	1.2	0.5	1.5	0.6	0.3
<i>Other</i>	0.2	0.0	0.1	0.2	0.2	0.0	0.0	0.1
<i>Non-recognised</i>	0.3	0.2	0.3	0.1	0.3	0.3	0.1	0.2
<b>No Religion</b>	<b>31</b>	<b>53</b>	<b>29</b>	<b>23</b>	<b>25</b>	<b>51</b>	<b>47</b>	<b>59</b>

**Table 8a Prison population by Prison Service Area**

September 1999, England & Wales

All Prisoners	Numbers												
	Total	Anglican	Free Church	Roman Catholic	other Christian	Buddhist	Hindu	Jewish	Muslim	Sikh	Non-permitted	No Religion	Other/Blank
All Areas	65,614 (100.0)	25,804 (39.3)	1,129 (1.7)	11,424 (17.4)	862 (1.3)	303 (0.5)	260 (0.4)	191 (0.3)	4,301 (6.6)	418 1%	156 0%	20,679 32%	88 0%
East Midlands North	3,357 (100.0)	1,723 (51.3)	70 (2.1)	460 (13.7)	41 (1.2)	15 (0.4)	18 (0.5)	9 (0.3)	221 (6.6)	29 1%	6 0%	760 23%	6 0%
East Midlands South	3,608 (100.0)	1,233 (34.2)	34 (0.9)	498 (13.8)	23 (0.6)	16 (0.4)	29 (0.8)	6 (0.2)	216 (6.0)	52 1%	9 0%	1,490 41%	2 0%
Eastern	4,830 (100.0)	1,666 (34.5)	98 (2.0)	726 (15.0)	81 (1.7)	31 (0.6)	20 (0.4)	18 (0.4)	400 (8.3)	30 1%	21 0%	1,733 (31.5)	7 (0.1)
Female Estate	2,996 (100.0)	1,348 (45.0)	89 (3.0)	677 (22.6)	37 (1.2)	9 (0.3)	17 (0.6)	7 (0.2)	77 (2.6)	9 0%	4 0%	719 24%	4 0%
High Security	4,883 (100.0)	1,994 (40.8)	113 (2.3)	912 (18.7)	75 (1.5)	55 (1.1)	7 (0.1)	30 (0.6)	401 (8.2)	27 1%	16 0%	1,247 26%	8 0%
Kent, Surrey & Sussex	5,659 (100.0)	2,140 (37.8)	117 (2.1)	1,006 (17.8)	176 (3.1)	39 (0.7)	45 (0.8)	43 (0.8)	559 (9.9)	49 1%	17 0%	1,455 26%	14 0%
Lancashire & Cumbria	3,696 (100.0)	1,722 (46.6)	78 (2.1)	934 (25.3)	35 (0.9)	11 (0.3)	5 (0.1)	4 (0.1)	190 (5.1)	12 0%	1 0%	701 19%	4 0%
London	4,978 (100.0)	1,541 (31.0)	79 (1.6)	1,118 (22.5)	98 (2.0)	25 (0.5)	31 (0.6)	24 (0.5)	680 (13.7)	48 (1.0)	20 (0.4)	1,307 (26.2)	7 (0.1)
Manchester, Mersey & Cheshire	5,294 (100.0)	2,319 (43.8)	65 (1.2)	1,454 (27.5)	29 (0.5)	15 (0.3)	7 (0.1)	8 (0.2)	226 (4.3)	3 0%	4 0%	1,158 22%	6 0%
North East	2,599 (100.0)	1,252 (48.2)	37 (1.4)	327 (12.6)	21 (0.8)	4 (0.2)	2 (0.1)	2 (0.1)	55 (2.1)	12 0%	1 0%	885 34%	2 0%
South West	5,575 (100.0)	2,035 (36.5)	118 (2.1)	731 (13.1)	89 (1.6)	18 (0.3)	9 (0.2)	12 (0.2)	200 (3.6)	16 0%	14 0%	2,325 42%	8 0%
Thames Valley & Hampshire	4,479 (100.0)	1,624 (36.3)	91 (2.0)	736 (16.4)	87 (1.9)	40 (0.9)	30 (0.7)	12 (0.3)	346 (7.7)	48 1%	11 0%	1,445 (31.5)	9 (0.1)
Wales	2,116 (100.0)	518 (24.5)	29 (1.4)	172 (8.1)	12 (0.6)	6 (0.3)	3 (0.1)	0 (0.0)	29 (1.4)	2 0%	2 0%	1,343 63%	1 0%
West Midlands	5,093 (100.0)	1,941 (38.1)	52 (1.0)	804 (15.8)	29 (0.6)	10 (0.2)	33 (0.6)	4 (0.1)	325 (6.4)	58 1%	18 0%	1,812 36%	7 0%
Yorkshire & Humberside	6,455 (100.0)	2,751 (42.6)	62 (1.0)	869 (13.5)	31 (0.5)	10 (0.2)	5 (0.1)	12 (0.2)	375 (5.8)	24 0%	12 0%	2,302 36%	3 0%

**Table 8b Prison population by Prison Service Area**

September 2000, England & Wales

All Prisoners	Numbers												
	Total	Anglican	Free Church	Roman Catholic	other Christian	Buddhist	Hindu	Jewish	Muslim	Sikh	Non-recognised	No Religion	Other/Not recorded
All Areas	64,960 (100)	24,985 (38.5)	1,083 (1.7)	11,328 (17.4)	1,114 (1.7)	378 (0.6)	237 (0.4)	160 (0.2)	4,646 (7.2)	431 (0.7)	178 (0.3)	20,304 (31.3)	115 (0.2)
East Midlands North	3,215 (100)	1,591 (49.5)	62 (1.9)	448 (13.9)	34 (1.1)	17 (0.5)	18 (0.6)	7 (0.2)	198 (6.1)	29 (0.9)	10 (0.3)	797 (24.8)	4 (0.1)
East Midlands South	3,531 (100)	1,280 (36.3)	35 (1.0)	531 (15.0)	36 (1.0)	17 (0.5)	22 (0.6)	5 (0.1)	247 (7.0)	37 (1.0)	15 (0.4)	1,301 (36.8)	5 (0.1)
Eastern	4,711 (100)	1,546 (32.8)	81 (1.7)	706 (15.0)	112 (2.4)	28 (0.6)	16 (0.3)	18 (0.4)	408 (8.7)	28 (0.6)	23 (0.5)	1,734 (36.8)	12 (0.3)
Female Estate	3,246 (100)	1,391 (42.9)	107 (3.3)	734 (22.6)	60 (1.8)	7 (0.2)	5 (0.2)	3 (0.1)	97 (3.0)	7 (0.2)	5 (0.2)	824 (25.4)	6 (0.2)
High Security	4,785 (100)	1,922 (40.2)	102 (2.1)	909 (19.0)	73 (1.5)	69 (1.4)	13 (0.3)	22 (0.5)	412 (8.6)	26 (0.5)	14 (0.3)	1,209 (25.3)	15 (0.3)
Kent, Surrey & Sussex	5,680 (100)	2,047 (36.0)	114 (2.0)	1,029 (18.1)	194 (3.4)	50 (0.9)	44 (0.8)	37 (0.6)	559 (9.8)	50 (0.9)	22 (0.4)	1,525 (26.8)	11 (0.2)
Lancashire & Cumbria	3,560 (100)	1,585 (44.5)	74 (2.1)	933 (26.2)	47 (1.3)	18 (0.5)	3 (0.1)	4 (0.1)	168 (4.7)	11 (0.3)	2 (0.1)	712 (20.0)	3 (0.1)
London	4,939 (100)	1,488 (30.1)	82 (1.7)	1,070 (21.7)	193 (3.9)	29 (0.6)	33 (0.7)	21 (0.4)	751 (15.2)	55 (1.1)	28 (0.6)	1,186 (24.0)	4 (0.1)
Manchester, Mersey & Cheshire	5,570 (100)	2,344 (42.1)	67 (1.2)	1,471 (26.4)	41 (0.7)	27 (0.5)	8 (0.1)	5 (0.1)	317 (5.7)	17 (0.3)	6 (0.1)	1,264 (22.7)	4 (0.1)
North East	2,469 (100)	1,137 (46.1)	32 (1.3)	346 (14.0)	19 (0.8)	4 (0.2)	0 (0.0)	1 (0.0)	58 (2.3)	3 (0.1)	0 (0.0)	867 (35.1)	2 (0.1)
South West	5,769 (100)	1,977 (34.3)	112 (1.9)	707 (12.3)	108 (1.9)	39 (0.7)	11 (0.2)	13 (0.2)	226 (3.9)	21 (0.4)	16 (0.3)	2,521 (43.7)	18 (0.3)
Thames Valley & Hampshire	4,416 (100)	1,563 (35.4)	91 (2.1)	711 (16.1)	118 (2.7)	42 (0.9)	29 (0.7)	10 (0.2)	377 (8.5)	29 (0.7)	4 (0.1)	1,425 (32.3)	17 (0.4)
Wales	1,904 (100)	541 (28.4)	24 (1.3)	167 (8.8)	14 (0.7)	7 (0.4)	4 (0.2)	1 (0.1)	44 (2.3)	3 (0.2)	1 (0.1)	1,097 (57.6)	2 (0.1)
West Midlands	4,930 (100)	1,895 (38.4)	46 (0.9)	734 (14.9)	37 (0.7)	17 (0.3)	28 (0.6)	6 (0.1)	343 (7.0)	74 (1.5)	19 (0.4)	1,727 (35.0)	4 (0.1)
Yorkshire & Humberside	6,235 (100)	2,679 (43.0)	56 (0.9)	832 (13.3)	31 (0.5)	8 (0.1)	4 (0.1)	7 (0.1)	441 (7.1)	42 (0.7)	13 (0.2)	2,114 (33.9)	8 (0.1)

**Table 9a Initial Receptions by Religion and Custody Type**

December 1999, England and Wales

	Numbers							
	Total	Untried	Convicted Unsentenced	Sentenced	Fine defaulter	Immigra- tion Act	Other non- criminal	Other transfers
<b>All Inmates</b>	<b>135,098</b>	<b>62,778</b>	<b>21,347</b>	<b>45,396</b>	<b>2,811</b>	<b>2,073</b>	<b>601</b>	<b>92</b>
<b>Inmates with declared religion</b>	<b>85,297</b>	<b>39,243</b>	<b>13,172</b>	<b>28,878</b>	<b>1,583</b>	<b>1,955</b>	<b>403</b>	<b>63</b>
<i>of whom</i>								
<i>Anglican</i>	49,673	22,149	7,799	18,319	1,086	52	246	23
<i>Roman Catholic</i>	22,024	10,931	3,668	6,741	354	226	88	17
<i>Free Church</i>	1,615	738	220	582	38	17	8	12
<i>Other Christian</i>	1,775	692	203	417	23	434	4	3
<i>Buddhist</i>	272	143	36	68	2	19	3	1
<i>Hindu</i>	613	172	54	241	5	133	8	-
<i>Jewish</i>	252	121	33	88	2	5	2	1
<i>Muslim</i>	7,727	3,806	1,003	1,943	63	882	25	4
<i>Sikh</i>	996	315	109	366	5	182	18	2
<i>Other</i>	129	58	20	47	1	3	-	-
<i>Non-recognised</i>	222	119	28	68	4	2	1	-
<b>No Religion</b>	<b>49,801</b>	<b>23,535</b>	<b>8,175</b>	<b>16,518</b>	<b>1,228</b>	<b>118</b>	<b>198</b>	<b>29</b>

	Percent							
	Total	Untried	Convicted Unsentenced	Sentenced	Fine defaulter	Immigra- tion Act	Other non- criminal	Other transfers
<b>All Inmates</b>	<b>100</b>	<b>100</b>	<b>100</b>	<b>100</b>	<b>100</b>	<b>100</b>	<b>100</b>	<b>100</b>
<b>Inmates with declared religion</b>	<b>63</b>	<b>63</b>	<b>62</b>	<b>64</b>	<b>56</b>	<b>94</b>	<b>67</b>	<b>68</b>
<i>of whom</i>								
<i>Anglican</i>	37	35	37	40	39	3	41	25
<i>Roman Catholic</i>	16	17	17	15	13	11	15	18
<i>Free Church</i>	1	1	1	1	1	1	1	13
<i>Other Christian</i>	1	1	1	1	1	21	1	3
<i>Buddhist</i>	0	0	0	0	0	1	0	1
<i>Hindu</i>	0	0	0	1	0	6	1	-
<i>Jewish</i>	0	0	0	0	0	0	0	1
<i>Muslim</i>	6	6	5	4	2	43	4	4
<i>Sikh</i>	1	1	1	1	0	9	3	2
<i>Other</i>	0	0	0	0	0	0	-	-
<i>Non-recognised</i>	0	0	0	0	0	0	0	-
<b>No Religion</b>	<b>37</b>	<b>37</b>	<b>38</b>	<b>36</b>	<b>44</b>	<b>6</b>	<b>33</b>	<b>32</b>

	Percent							
	Total	Untried	Convicted Unsentenced	Sentenced	Fine defaulter	Immigra- tion Act	Other non- criminal	Other transfers
<b>All Inmates</b>	<b>100</b>	<b>46</b>	<b>16</b>	<b>34</b>	<b>2</b>	<b>2</b>	<b>0</b>	<b>0</b>
<b>Inmates with declared religion</b>	<b>100</b>	<b>46</b>	<b>15</b>	<b>34</b>	<b>2</b>	<b>2</b>	<b>0</b>	<b>0</b>
<i>of whom</i>								
<i>Anglican</i>	100	44.6	15.7	36.9	2.2	0.1	0.5	0.0
<i>Roman Catholic</i>	100	49.6	16.7	30.6	1.6	1.0	0.4	0.1
<i>Free Church</i>	100	45.7	13.6	36.0	2.4	1.1	0.5	0.7
<i>Other Christian</i>	100	39.0	11.4	23.5	1.3	24.4	0.2	0.2
<i>Buddhist</i>	100	52.6	13.2	25.0	0.7	7.0	1.1	0.4
<i>Hindu</i>	100	28.1	8.8	39.3	0.8	21.7	1.3	-
<i>Jewish</i>	100	48.0	13.1	34.9	0.8	2.0	0.8	0.4
<i>Muslim</i>	100	49.3	13.0	25.1	0.8	11.4	0.3	0.1
<i>Sikh</i>	100	31.6	10.9	36.7	0.5	18.3	1.8	0.2
<i>Other</i>	100	45.0	15.5	36.4	0.8	2.3	-	-
<i>Non-recognised</i>	100	53.6	12.6	30.6	1.8	0.9	0.5	-
<b>No Religion</b>	<b>100</b>	<b>47</b>	<b>16</b>	<b>33</b>	<b>2</b>	<b>0</b>	<b>0</b>	<b>0</b>

Note:

Receptions count all arrivals in prison and are cumulative over the year. The figures for Q4 therefore record all receptions over the year.

The figures for receptions for all religions are considerably higher than those for prison population, because of the large number of inmates serving short sentences and the possibility of double-counting of minor persistent offenders.

**Table 9b Initial Receptions by Religion and Custody Type**

December 2000, England and Wales

	Numbers							
	Total	Untried	Convicted Unsentenced	Sentenced	Fine defaulter	Immigra- tion Act	Other non- criminal	Other transfers
<b>All Inmates</b>	<b>129,733</b>	<b>55,520</b>	<b>22,055</b>	<b>47,862</b>	<b>1,750</b>	<b>1,963</b>	<b>407</b>	<b>176</b>
<b>Inmates with declared religion</b>	<b>81,815</b>	<b>35,238</b>	<b>13,560</b>	<b>29,888</b>	<b>940</b>	<b>1,807</b>	<b>285</b>	<b>97</b>
<i>of whom</i>								
<i>Anglican</i>	46,805	19,248	7,946	18,673	654	69	169	45
<i>Roman Catholic</i>	21,205	9,580	3,811	7,237	204	275	72	25
<i>Free Church</i>	1,446	636	248	507	22	18	8	6
<i>Other Christian</i>	2,131	948	235	494	17	427	6	4
<i>Buddhist</i>	314	151	48	90	1	20	2	1
<i>Hindu</i>	572	191	50	218	1	105	4	2
<i>Jewish</i>	237	134	31	68	3	-	1	-
<i>Muslim</i>	7,839	3,845	1,052	2,157	31	731	12	10
<i>Sikh</i>	924	327	92	340	1	151	10	3
<i>Other</i>	136	53	20	56	1	5	-	1
<i>Non-recognised</i>	206	123	25	48	4	6	-	-
<b>No Religion</b>	<b>47,918</b>	<b>20,282</b>	<b>8,495</b>	<b>17,973</b>	<b>811</b>	<b>155</b>	<b>122</b>	<b>79</b>

	Percent							
	Total	Untried	Convicted Unsentenced	Sentenced	Fine defaulter	Immigra- tion Act	Other non- criminal	Other transfers
<b>All Inmates</b>	<b>100</b>	<b>100</b>	<b>100</b>	<b>100</b>	<b>100</b>	<b>100</b>	<b>100</b>	<b>100</b>
<b>Inmates with declared religion</b>	<b>63</b>	<b>63</b>	<b>61</b>	<b>62</b>	<b>54</b>	<b>92</b>	<b>70</b>	<b>55</b>
<i>of whom</i>								
<i>Anglican</i>	36	35	36	39	37	4	42	26
<i>Roman Catholic</i>	16	17	17	15	12	14	18	14
<i>Free Church</i>	1	1	1	1	1	1	2	3
<i>Other Christian</i>	2	2	1	1	1	22	1	2
<i>Buddhist</i>	0	0	0	0	0	1	0	1
<i>Hindu</i>	0	0	0	0	0	5	1	1
<i>Jewish</i>	0	0	0	0	0	0	0	0
<i>Muslim</i>	6	7	5	5	2	37	3	6
<i>Sikh</i>	1	1	0	1	0	8	2	2
<i>Other</i>	0	0	0	0	0	0	0	1
<i>Non-recognised</i>	0	0	0	0	0	0	0	0
<b>No Religion</b>	<b>37</b>	<b>37</b>	<b>39</b>	<b>38</b>	<b>46</b>	<b>8</b>	<b>30</b>	<b>45</b>

	Percent							
	Total	Untried	Convicted Unsentenced	Sentenced	Fine defaulter	Immigra- tion Act	Other non- criminal	Other transfers
<b>All Inmates</b>	<b>100</b>	<b>43</b>	<b>17</b>	<b>37</b>	<b>1</b>	<b>2</b>	<b>0</b>	<b>0</b>
<b>Inmates with declared religion</b>	<b>100</b>	<b>43</b>	<b>17</b>	<b>37</b>	<b>1</b>	<b>2</b>	<b>0</b>	<b>0</b>
<i>of whom</i>								
<i>Anglican</i>	100	41.1	17.0	39.9	1.4	0.1	0.4	0.1
<i>Roman Catholic</i>	100	45.2	18.0	34.1	1.0	1.3	0.3	0.1
<i>Free Church</i>	100	44.0	17.2	35.1	1.5	1.2	0.6	0.4
<i>Other Christian</i>	100	44.5	11.0	23.2	0.8	20.0	0.3	0.2
<i>Buddhist</i>	100	48.2	15.3	28.8	0.3	6.4	0.6	0.3
<i>Hindu</i>	100	33.5	8.8	38.2	0.2	18.4	0.7	0.4
<i>Jewish</i>	100	56.5	13.1	28.7	1.3	0.0	0.4	0.0
<i>Muslim</i>	100	49.1	13.4	27.5	0.4	9.3	0.2	0.1
<i>Sikh</i>	100	35.4	10.0	36.8	0.1	16.4	1.1	0.3
<i>Other</i>	100	39.0	14.7	41.2	0.7	3.7	0.0	0.7
<i>Non-recognised</i>	100	59.7	12.1	23.3	1.9	2.9	0.0	0.0
<b>No Religion</b>	<b>100</b>	<b>42</b>	<b>18</b>	<b>38</b>	<b>2</b>	<b>0</b>	<b>0</b>	<b>0</b>

Note:

Receptions count all arrivals in prison and are cumulative over the year. The figures for Q4 therefore record all receptions over the year.

The figures for receptions for all religions are considerably higher than those for prison population, because of the large number of inmates serving short sentences and the possibility of double-counting of minor persistent offenders.