

<b>Sponsoring Organisation:</b>	<b>Implementation Date:</b>	01/06/2009
<b>NHS Connecting for Health</b>	<b>Subject:</b> <b>Religious and Other Belief System Affiliation</b>	
<b>DATA SET CHANGE NOTICE</b>		
<p>This DSCN informs users of the approval of a change to an information standard by the Information Standards Board for Health and Social Care (ISB HaSC).</p> <p>This was approved by ISB HaSC on 1 May 2009.</p>		
<b>Summary:</b>		
<p>Consistent recording of a person's religious or other belief system affiliation is required to support the planning, delivery and quality monitoring of holistic and pastoral care.</p> <p>This Change is the addition of a new person attribute to the NHS Data Dictionary: a standard list of religious and other belief system affiliations. The standard list is aligned with descriptors for religious and other belief system affiliations in <b>SNOMED CT</b><sup>®</sup>.</p> <p>The standard list is to be applied in: the Message Implementation Manual (MIM) for the NHS Care Record Service (NHS CRS), specifically the Choose and Book Religious Affiliation Vocabulary; the patient's electronic record/integrated care record service (ICRS); the Maternity Services Dataset currently under development and any other context where consistent recording of a person's religious or other belief system affiliation is required.</p> <p>The standard list can be used in NHS systems from 31 March 2009. Suppliers of existing systems that support recording of a patient's religion or religious or other belief system affiliation are required to have migrated to the standard list by 31 March 2012.</p>		
<b>Datasets / return affected: None</b>		
<b>Related DSCNs: None</b>		
<b>Impact of Change:</b>		
<b>Service:</b> Minor	<b>System Suppliers:</b> Major	
<p>The Information Standards Board for Health and Social Care (ISB HaSC) is responsible for approving information standards. Submission documents and the ISB HaSC Board output relating to the approval of this standard can be found at:</p> <p><a href="http://www.isb.nhs.uk/docs/religious-and/">www.isb.nhs.uk/docs/religious-and/</a></p>		

## DATA SET CHANGE NOTICE

---

---

<b>Reference No:</b>	<b>ISB/1071-00/2009[Change], DSCN 13/2009</b>
<b>Version No:</b>	<b>1.0</b>
<b>Subject:</b>	<b>Religious and Other Belief System Affiliation</b>
<b>Type of Change:</b>	<b>Update to the NHS Data Model and Dictionary</b>
<b>Implementation Date:</b>	<b>31/03/2012</b>
<b>Business Justification:</b>	Information about the NHS use the religious affiliation item in order to organise holistic and pastoral care and religious affiliation is captured as part of the Choose and Book referral message. It is also an entry in the Maternity Services Dataset currently under development. Constructing a defined list of agreed religious affiliations in both SNOMED CT and the NHS Data Dictionary prevents any mis-interpretation of religion and affiliation.

---

---

### Introduction

This Change is the addition of an agreed list of religious and other belief system affiliations to the NHS Data Dictionary.

The need to document religious and other belief system affiliation is outlined in the Department of Health's Equality and Human Rights Strategy. Without a consistent way of recording this information, quality of care for patients, families and communities could be compromised.

This DSCN is not mandating the recording of religious affiliation, nor the addition of this field to systems where it is not currently present. However where this information is collected and recorded then there must be full conformance with the list.

- If the field is to be added to a system, the standard list/SNOMED CT subset must be used.
- Developers of SNOMED CT compliant systems that support recording of Religious and Other Belief System Affiliation should migrate to the Snomed CT religion subset by 31/03/2012, taking account of data migration issues such as changing user behaviour and any impact on trend analysis.
- Other systems that support recording of Religious and Other Belief Systems Affiliation should migrate to the NHS Standard list published in the NHS Data Dictionary by 31/03/2012, taking account of data migration issues such as changing user behaviour and any impact on trend analysis.
- Developers of information standards must use the list when developing new or revising existing standards that include information about Religious and Other Belief Systems Affiliation.

Operationally, the NHS uses information about the patient's religious or other belief system affiliation item in order to plan, deliver, monitor and improve holistic and pastoral care. Religious affiliation is captured as part of the Choose and Book referral message. It is also an entry in the Maternity Services Dataset currently under development. An agreed list of religious and other belief system affiliations that is aligned with SNOMED CT descriptors will support consistent recording, communication and analysis of this important personal attribute.

The list is to be used in all NHS clinical / patient care settings by Clinical, Administrative and Chaplaincy Staff. Guidance on obtaining, recording and sharing information about religious or other

belief system affiliation is available from the Department of health and there should be local polices in place for this practice.

- The standard list is also to be used by: system suppliers; developers and users of data standards that include the religious and other belief system affiliation data element; and developers of other information standards.

There is potential for the list to be used in wider Social Care settings and other non-clinical NHS settings.

Development and maintenance of the NHS list of religious and other belief system affiliations is managed by project manager for the DH Improving Patient Access to Spiritual and Religious Care Project. Governance of the list content is supported by the NHS Chaplaincy Community.

## Definitions

### Religious Affiliation

Religious affiliation is the self-identified association of a person with a religion, denomination or sub-denominational religious group. i.e. the church an individual belongs to: "I am a Methodist"

### Religion

Religion is a system of beliefs, including belief in the existence of at least one of the following: a human soul or spirit, a deity or higher being or self after the death of one's body, for example, Methodism etc

### Belief System

There are varieties of belief systems: these can be religious, political, cultural etc. One definition is this: "A shared system of beliefs and values that systematically define a way of perceiving the social, cultural, physical and psychological world." Essentially a belief system is just that: a defining system or framework which supports and informs our religious, spiritual, psychological, cultural, social and metaphysical understanding, knowledge and perception. A belief system also informs and may set standards for behaviour and activity. E.g. a committed vegan does not eat meat, fish or fowl, nor uses any leather goods. Being a vegan is a commitment to living life in a particular way. In the same way a Humanist lives his or her life according to humanist precepts which will inform the way in which they regard other people, and their understanding of human rights. So a belief system is not solely identified with a religious faith.

## Background

This DSCN is not mandating the recording of religious affiliation, nor the addition of this field to systems where it is not currently present. However where this information is collected and recorded then there must be full conformance with the list.

There is currently no recognised international or national standard for religious and other belief system affiliation. Religious Affiliation is captured as part of the Choose and Book referral message as defined in the Message Implementation Manual (MIM), and is based on HL7 v3 Religious Affiliation with two additions, namely Methodism and Plymouth Brethren.

Initial investigations found that:

- The NHS Data Dictionary does not include a definition for Religious Affiliation
- The Personal Demographics Service (PDS) does not hold Religion or Religious Affiliation
- The MIM includes entries from both the Religious Affiliation and Religions List, i.e. Methodist v Methodism and is not fit for purpose.

Therefore, a standard list of religious and other belief system affiliations that can be used in a range of settings and appropriate to multi-faith context was required. This list needed to be added to the NHS Data Dictionary and the terms used should be aligned with descriptors in SNOMED CT to support use of the standard list by current and future users of SNOMED CT.

The list is to be applied to the Message Implementation Manual (MIM) for the NHS Care Record Service (NHS CRS), specifically the Choose and Book Religious Affiliation Vocabulary, as well as used within the patient's electronic record/integrated care record service (ICRS), and the Maternity Services Dataset currently under development.

There are business use cases for the consistent recording of religious and other belief system affiliation outside of the NHS. Similar work is currently being undertaken by the Public Sector Information Domain Team (formerly part of e-GIF), Data Standards Working Group (DSWG), which is reviewing the census ONS data on religious affiliations. The Data Standards Working Group is in discussion with the NHS Connecting for Health Standards Consulting Group and are proposing to align the census religious affiliations descriptions with this NHS standard list, further strengthening interoperability of information within this domain.

### **Maintenance and Update Process Plans**

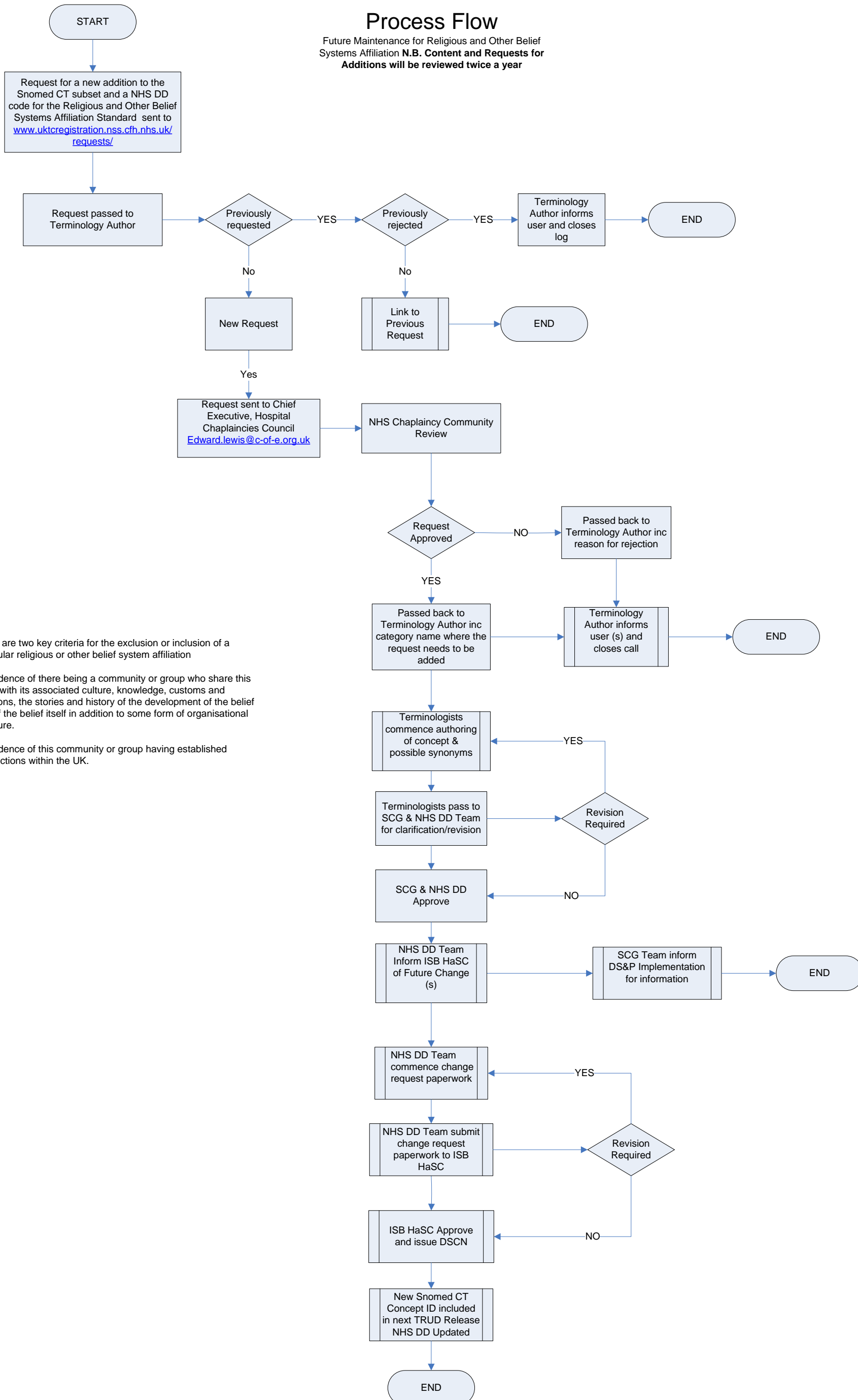
Maintenance of the list will be performed through an agreed process through the Standards Consulting Group within Data Standards and Products, and released through Snomed CT as a 'subset' and the NHS Data Dictionary will be updated accordingly as part of this process.

This will be maintained as part of the current Snomed CT Release and Maintenance process. Should new terms be required in future, these will be processed through the Snomed CT request mechanism if the term is not available in Snomed CT. If it is available, but not in the list, this will be requested via the Data Standards and Products team (MiM), and released in the next version of the list. Details with regard to adding terms in the interim phases of releases are covered by the 'Subset Maintenance Process' enlisted by NHS CFH and the UKTC (United Kingdom Terminology Centre).

N.B. The following process flow chart prints in full on A3

## Process Flow

Future Maintenance for Religious and Other Belief Systems Affiliation N.B. Content and Requests for Additions will be reviewed twice a year



There are two key criteria for the exclusion or inclusion of a particular religious or other belief system affiliation

1. Evidence of there being a community or group who share this belief with its associated culture, knowledge, customs and traditions, the stories and history of the development of the belief and of the belief itself in addition to some form of organisational structure.
2. Evidence of this community or group having established connections within the UK.

## Guidance

Guidance has been produced for the NHS by the Rev'd Susan Hollis, Project Manager (DH), Improving Patient Access to Spiritual and Religious Care Project, in conjunction with NHS Connecting for Health (CFH) who developed the Change to an Information Standard submission. The guidance includes clear instruction about how the question about religion/belief system/affiliation is asked and what to record if 'religion' rather than affiliation is expressed by the patient. A copy of the guidance can be downloaded [here](#)

## Details of Change

See attached change proposal.

### *Implementation plan*

Release through SNOMED CT Subset release process with UKTC	October 2008
Personal Spine Information Service (PSIS) architecture carrying list and fieldname religious affiliations to influence uptake	October 2008
Distributed via TRUD (downloaded) to suppliers	October 2008
List added to NHS Data Dictionary	By June 2009
Awareness raising via Forums, UKTC website etc. As with previous; distribution and development of implementation guidance and training materials/notices where necessary	October 2008 through to January 2009
Religious and Other Belief Systems Affiliation list sent out for further consultation to chaplaincy groups within the UK	January 2009
Monitoring and survey of sample to identify effort and issues	Throughout 2009
Choose and Book vocabulary for religious affiliation updated to Snomed CT Subset	2010
MiM implementation guidance released to further strengthen uptake	2010
Full conformance across the NHS	31/03/2012

**Timescales for Change**

<b>FRAMEWORK</b>		<b>Health and Social Care Personnel</b>	<b>Organisation<sup>1</sup></b>	<b>IT Suppliers<sup>2</sup></b>
<b>Effective Date<sup>3</sup></b> "may use"		01/06/2009	01/06/2009	01/06/2009
<b>Implementation Date<sup>4</sup></b> "must use"	<b>Collection Start Date<sup>5</sup></b>	N/A	N/A	N/A
	<b>First Submission Date<sup>6</sup></b>	N/A	N/A	N/A
	<b>Reporting Period / Submission Cycle<sup>7</sup></b>	N/A	N/A	N/A
<b>Conformance Date<sup>8</sup></b> "must be used effectively and assessed for use"		31/03/2012	31/03/2012	31/03/2012
<b>Superseded Date (of prior standard)<sup>9</sup></b> "stop using prior standard"		N/A	N/A	N/A

**Effects on Other Information Standards**

None

**Sponsor Details**

Standards Assurance Group  
 Chair Ken Lunn  
 Director of Data Standards and Products  
 Technology Office, Princes Exchange, Leeds, LS1 4HY  
[Ken.lunn@nhs.net](mailto:Ken.lunn@nhs.net)  
 0113 397 4399  
 07766 076863

**Further Information and Support**

Rae Long  
 Standards Consultant (Data Quality)  
 Standards Consulting Group  
 Data Standards and Products  
 NHS Connecting for Health  
[Rae.long@nhs.net](mailto:Rae.long@nhs.net)  
 0113 397 5873  
 07900 240164

**Notes:**

1. Relevant organisations are those organisations as defined in the standard who must take direct action to implement the standard
2. IT Suppliers are all suppliers to the organisations listed at <sup>1</sup> who supply functionality pertinent to that standard
3. **Effective Date** is the date from which a new standard can be used but may not be mandatory. This might facilitate piloting, for example, or enable time for system functionality development. At this point, **you “may use” the standard.**
4. **Implementation Date** is the point from which the new standard becomes mandatory. Ideally, it inherently implies organisations use appropriate systems i.e. the date is the same for organisations and suppliers. However, there may be circumstances where interim workarounds are required i.e. the date is different for organisations and suppliers. At this date, **you “must use” the standard.** Where the standard demands data is submitted centrally, sub components of implementation date (and possibly ‘effective date’) are:
  5. **Collection Start Date** – this is the date collection of data must begin
  6. **First Submission Date** – this is the date of first submission of data centrally
  7. **Reporting Period / Submission Cycle** – If the standard calls for further collection and submission at defined intervals, this cell provides text of the reporting period (e.g. calendar month, financial year) and the submission cycle (e.g. submit data monthly on the 10<sup>th</sup> working day of the subsequent month).
8. **Conformance Date** is the date from which the service and IT system suppliers must use the standard as envisaged i.e. using appropriate IT solutions rather than interim workarounds and, if the standard requires it, an independent, authoritative body or legitimate internal audit would conduct a conformity assessment with the expectation of full conformance by all relevant parties. It is the **“must use standard effectively and assessed for use”** date
9. **Superseded Date** of the prior standard sets the date at which the prior standard is replaced by the new standard i.e. the prior standard must no longer be used. This date will apply only where there was a pre-existing standard made redundant by the new standard. It might be different from preceding dates in the framework if, for example, a new and old standard run in parallel for a period. It is the date from which you **“stop using the prior standard”**.



## Change Request

### NHS Connecting for Health

#### NHS Data Model and Dictionary Service

**Reference:** Change Request 1014  
**Version No:** 1.0  
**Subject:** Religious or Other Belief System Affiliation  
**Effective Date:** Immediate  
**Reason for Change:** Changes to NHS Data Standards  
**Publication Date:** 2 April 2009

#### Background:

Religious Affiliation is captured as part of the Choose and Book referral message as defined in the Message Implementation Manual (MIM) and is based on HL7 v3 Religious Affiliation with two additions, namely Methodism and Plymouth Brethren.

Investigations showed that:

- The NHS Data Model and Dictionary did not include a definition for Religious Affiliation
- The Personal Demographics Service (PDS) did not hold Religion or Religious Affiliation
- The Message Implementation Manual (MIM) included entries from both the Religious Affiliation and Religions List, i.e. Methodist v Methodism but was not fit for purpose.

Therefore, there was a need for a list of Religious Affiliations that could be used in a range of settings and are appropriate to a multi-faith context. The usage of such a list will be applied to the Message Implementation Manual (MIM) for the NHS Care Record Service (NHS CRS), specifically the Choose and Book Religious Affiliation Vocabulary, the NHS Data Model and Dictionary as well as within the patient's electronic record/integrated care record service (ICRS).

There are also other business use cases to record Religious Affiliations outside of the NHS. Similar work is also currently being undertaken by the Public Sector Information Domain Team (formerly part of e-GIF), Data Standards Working Group (DSWG), who are currently reviewing the census Office for National Statistics (ONS) data on Religious Affiliations. Through the Public Sector Domain Team, development of a range of cross government assets, including standards associated with e-GIF, are being taken forward. The process is being administered by a cross governmental team with representatives from a number of organisations, such as, the Department for Work and Pensions, Department for Children, Schools and Families, Her Majesty's Revenue and Customs etc.

This Data Set Change Notice updates the NHS Data Model and Dictionary as follows:

- Introduces new Classes for Religious or Other Belief System Affiliation and Religious Or Other Belief System Affiliation Group
- Introduces new Attributes for Religious or Other Belief System Affiliation Code and Religious or Other Belief System Affiliation Group Code  
Note: Both have been created to enable collection of either the term or the group codes depending on specific requirements
- Introduces a new Data Element for Religious or Other Belief System Affiliation Code  
Note: The Data Element "Religious or Other Belief System Affiliation Code" will be used in the Maternity Services Data Set which is currently under development
- Introduces new NHS Business Definitions for Religion and Religious Affiliation to explain the difference.

#### Summary of changes:

## Supporting Information

[RELIGION](#)

New Supporting Information

[RELIGIOUS AFFILIATION](#)

New Supporting Information

## Class Definitions

[CATEGORY VALUED PERSON OBSERVATION](#)

Changed Relationships, Description

[RELIGIOUS OR OTHER BELIEF SYSTEM AFFILIATION](#)

New Class

[RELIGIOUS OR OTHER BELIEF SYSTEM AFFILIATION GROUP](#)

New Class

## Attribute Definitions

[RELIGIOUS OR OTHER BELIEF SYSTEM AFFILIATION CODE](#)

New Attribute

[RELIGIOUS OR OTHER BELIEF SYSTEM AFFILIATION GROUP CODE](#)

New Attribute

## Data Elements

[RELIGIOUS OR OTHER BELIEF SYSTEM AFFILIATION CODE](#)

New Data Element

**Date:** 2 April 2009

**Sponsor:** Ken Lunn, Technology Office, NHS Connecting for Health

**Note:** New text is shown with a blue background. Deleted text is crossed out. Within the Diagrams deleted classes and relationships are red, changed items are blue and new items are green.

---

## RELIGION

---

Change to Supporting Information: New Supporting Information

[Religion](#) is a system of beliefs, including belief in the existence of at least one of the following: a human soul or spirit, a deity or higher being or self after the death of one's body, for example, Methodism etc.

---

## RELIGIOUS AFFILIATION

---

Change to Supporting Information: New Supporting Information

[Religious Affiliation](#) is the self-identified association of a [PERSON](#) with a [Religion](#), denomination or sub-denominational religious group, such as, the church an individual belongs to, for example Methodist.

---

## CATEGORY VALUED PERSON OBSERVATION

---

Change to Class: Changed Relationships, Description

A type of [PERSON PROPERTY](#).

Observations made regarding a [PATIENT](#). These observations do not include information about a treatment or intervention. ~~The observer may be a related [PATIENT](#) or a [CARE PROFESSIONAL](#).~~

[CATEGORY VALUED PERSON OBSERVATION](#) allows coded classifications of observations about a [PATIENT](#), whereas [MEASURED PERSON OBSERVATION](#) allows for recording of measurements about a [PATIENT](#).

[CATEGORY VALUED PERSON OBSERVATIONS](#) include:

- [ACCOMMODATION STATUS](#)
- [ALCOHOL STATUS](#)
- [ASPIRIN THERAPY LOCATION](#)
- [BLEED COMPLICATION](#)
- [ETHNIC CATEGORY](#)
- [JOINT REPLACEMENT REVISION CLASSIFICATION](#)
- [LANGUAGE CLASSIFICATION](#)
- [LEGAL STATUS CLASSIFICATION](#)
- [PATIENT CLINICAL GROUP](#)
- [PERFORMANCE STATUS](#)
- [PERSON GENDER](#)
- [PERSON MARITAL STATUS](#)
- [RELIGIOUS OR OTHER BELIEF SYSTEM AFFILIATION](#)
- [RELIGIOUS OR OTHER BELIEF SYSTEM AFFILIATION GROUP](#)
- [SARCOMA PREDISPOSING CONDITION](#)
- [SEXUAL ORIENTATION](#)
- [SKIN LYMPHOMA MORPHOLOGY](#)

---

## CATEGORY VALUED PERSON OBSERVATION

---

Change to Class: Changed Relationships, Description

*Each CATEGORY VALUED PERSON OBSERVATION*

must be categorised by one and only one ACCOMMODATION STATUS  
or must be categorised by one and only one ALCOHOL STATUS  
or must be categorised by one and only one ASPIRIN THERAPY LOCATION  
or must be categorised by one and only one BLEED COMPLICATION  
or must be categorised by one and only one ETHNIC CATEGORY  
or must be categorised by one and only one JOINT REPLACEMENT REVISION CLASSIFICATION  
or must be categorised by one and only one LANGUAGE CLASSIFICATION  
or must be categorised by one and only one LEGAL STATUS CLASSIFICATION  
or must be categorised by one and only one PATIENT CLINICAL GROUP  
or must be categorised by one and only one PERFORMANCE STATUS  
or must be categorised by one and only one PERSON GENDER  
or must be categorised by one and only one PERSON MARITAL STATUS  
[or must be categorised by one and only one RELIGIOUS OR OTHER BELIEF SYSTEM AFFILIATION](#)  
or must be categorised by one and only one SARCOMA PREDISPOSING CONDITION  
or must be categorised by one and only one SEXUAL ORIENTATION  
or must be categorised by one and only one SKIN LYMPHOMA MORPHOLOGY  
[must be categorised by one and only one RELIGIOUS OR OTHER BELIEF SYSTEM AFFILIATION GROUP](#)

---

## RELIGIOUS OR OTHER BELIEF SYSTEM AFFILIATION

---

Change to Class: New Class

[The RELIGIOUS OR OTHER BELIEF SYSTEM AFFILIATION](#) of a PERSON, as specified by a PERSON.

Note: This is the [Religious Affiliation](#) of a PERSON, not their Religion.

---

## RELIGIOUS OR OTHER BELIEF SYSTEM AFFILIATION

---

Change to Class: New Class

*Attributes of this Class are:*

**K** RELIGIOUS OR OTHER BELIEF SYSTEMS AFFILIATION CODE

---

## RELIGIOUS OR OTHER BELIEF SYSTEM AFFILIATION

---

Change to Class: New Class

*Each RELIGIOUS OR OTHER BELIEF SYSTEM AFFILIATION*

must be in one and only one RELIGIOUS OR OTHER BELIEF SYSTEM AFFILIATION GROUP

may be category for one or more CATEGORY VALUED PERSON OBSERVATION

---

## RELIGIOUS OR OTHER BELIEF SYSTEM AFFILIATION GROUP

---

Change to Class: New Class

The RELIGIOUS OR OTHER BELIEF SYSTEM AFFILIATION GROUP of a PERSON, as specified by a PERSON.

Note: This is the Religious Affiliation of a PERSON, not their Religion.

---

## RELIGIOUS OR OTHER BELIEF SYSTEM AFFILIATION GROUP

---

Change to Class: New Class

*Attributes of this Class are:*

RELIGIOUS OR OTHER BELIEF SYSTEMS AFFILIATION GROUP CODE

---

## RELIGIOUS OR OTHER BELIEF SYSTEM AFFILIATION GROUP

---

Change to Class: New Class

*Each RELIGIOUS OR OTHER BELIEF SYSTEM AFFILIATION GROUP*

may be category for one or more CATEGORY VALUED PERSON OBSERVATION

must be the group for one or more RELIGIOUS OR OTHER BELIEF SYSTEM AFFILIATION

---

## RELIGIOUS OR OTHER BELIEF SYSTEM AFFILIATION CODE

---

Change to Attribute: New Attribute

The RELIGIOUS OR OTHER BELIEF SYSTEM AFFILIATION of a PERSON, as specified by a PERSON.

Note: This is the Religious Affiliation of a PERSON, not their Religion.

*National Codes:*

**Baha'i**

A1 Baha'i

## Buddhist

- B1 Buddhist
- B2 Mahayana Buddhist
- B3 New Kadampa Tradition Buddhist
- B4 Nichiren Buddhist
- B5 Pure Land Buddhist
- B6 Theravada Buddhist
- B7 Tibetan Buddhist
- B8 Zen Buddhist

## Christian

- C1 Christian
- C2 Amish
- C3 Anabaptist
- C4 Anglican
- C5 Apostolic Pentecostalist
- C6 Armenian Catholic
- C7 Armenian Orthodox
- C8 Baptist
- C9 Brethren
- C10 Bulgarian Orthodox
- C11 Calvinist
- C12 Catholic: Not Roman Catholic
- C13 Celtic Christian
- C14 Celtic Orthodox Christian
- C15 Chinese Evangelical Christian
- C16 Christadelphian
- C17 Christian Existentialist
- C18 Christian Humanist
- C19 Christian Scientists
- C20 Christian Spiritualist
- C21 Church in Wales
- C22 Church of England
- C23 Church of God of Prophecy
- C24 Church of Ireland
- C25 Church of Scotland
- C26 Congregationalist
- C27 Coptic Orthodox
- C28 Eastern Catholic
- C29 Eastern Orthodox
- C30 Elim Pentecostalist
- C31 Ethiopian Orthodox
- C32 Evangelical Christian
- C33 Exclusive Brethren
- C34 Free Church
- C35 Free Church of Scotland
- C36 Free Evangelical Presbyterian
- C37 Free Methodist
- C38 Free Presbyterian
- C39 French Protestant
- C40 Greek Catholic
- C41 Greek Orthodox
- C42 Independent Methodist
- C43 Indian Orthodox
- C44 Jehovah's Witness
- C45 Judaic Christian
- C46 Lutheran
- C47 Mennonite

C48 Messianic Jew  
 C49 Methodist  
 C50 Moravian  
 C51 Mormon  
 C52 Nazarene Church  
     SYN Nazarene  
 C53 New Testament Pentacostalist  
 C54 Nonconformist  
 C55 Old Catholic  
 C56 Open Brethren  
 C57 Orthodox Christian  
 C58 Pentecostalist  
     SYN Pentacostal Christian  
 C59 Presbyterian  
 C60 Protestant  
 C61 Plymouth Brethren  
 C62 Quaker  
 C63 Rastafari  
 C64 Reformed Christian  
 C65 Reformed Presbyterian  
 C66 Reformed Protestant  
 C67 Roman Catholic  
 C68 Romanian Orthodox  
 C69 Russian Orthodox  
 C70 Salvation Army Member  
 C71 Scottish Episcopalian  
 C72 Serbian Orthodox  
 C73 Seventh Day Adventist  
 C74 Syrian Orthodox  
 C75 Ukrainian Catholic  
 C76 Ukrainian Orthodox  
 C77 Uniate Catholic  
 C78 Unitarian  
 C79 United Reform  
 C80 Zwinglian

**Hindu**

D1 Hindu  
 D2 Advaitin Hindu  
 D3 Arya Samaj Hindu  
 D4 Shakti Hindu  
 D5 Shiva Hindu  
 D6 Vaishnava Hindu  
     Hare Krishna

**Jain**

E1 Jain

**Jewish**

F1 Jewish  
 F2 Ashkenazi Jew  
 F3 Haredi Jew  
 F4 Hasidic Jew  
 F5 Liberal Jew  
 F6 Masorti Jew  
 F7 Orthodox Jew  
 F8 Reform Jew

**Muslim**

G1 Muslim  
 G2 Ahmadi

	G3	Druze
	G4	Ismaili Muslim
	G5	Shi'ite Muslim
	G6	Sunni Muslim
<b>Pagan</b>		
	H1	Pagan
	H2	Asatruar
	H3	Celtic Pagan
	H4	Druid
	H5	Goddess
	H6	Heathen
	H7	Occultist
	H8	Shaman
	H9	Wiccan
<b>Sikh</b>		
	I1	Sikh
<b>Zoroastrian</b>		
	J1	Zoroastrian
<b>Other</b>		
	K1	Agnostic *
	K2	Ancestral Worship
	K3	Animist
	K4	Anthroposophist
	K5	Black Magic
	K6	Brahma Kumari
	K7	British Israelite
	K8	Chondogyo
	K9	Confucianist
	K10	Deist
	K11	Humanist
	K12	Infinite Way
	K13	Kabbalist
	K14	Lightworker
	K15	New Age Practitioner
	K16	Native American Religion
	K17	Pantheist
	K18	Peyotist
	K19	Radha Soami SYN Sant Mat
	K20	Religion (Other Not Listed) **
	K21	Santeri
	K22	Satanist
	K23	Scientologist
	K24	Secularist
	K25	Shumei
	K26	Shinto
	K27	Spiritualist
	K28	Swedenborgian SYN Neo-Christian
	K29	Taoist
	K30	Unitarian-Universalist
	K31	Universalist
	K32	Vodun
	k33	Yoruba
<b>None</b>		
	L1	Atheist
	L2	Not Religious

**Declines to Disclose**

M1 Religion not given - PATIENT refused

**Unknown**

N1 Patient Religion Unknown \*\*\*

*Note:*

\* Where the PATIENT **has been asked** for their RELIGIOUS OR OTHER BELIEF SYSTEM AFFILIATION but they are unsure what it is: Agnostic should be used

\*\* Where the PATIENT **has been asked** for their RELIGIOUS OR OTHER BELIEF SYSTEM AFFILIATION and it is one that is not listed: Religion (Other Not Listed) should be used

\*\*\* Where the PATIENT **has not been asked** for their RELIGIOUS OR OTHER BELIEF SYSTEM AFFILIATION: Patient Religion Unknown should be used

**RELIGIOUS OR OTHER BELIEF SYSTEM AFFILIATION CODE**

Change to Attribute: New Attribute

**RELIGIOUS OR OTHER BELIEF SYSTEM AFFILIATION CODE**

**Data Elements:**

RELIGIOUS OR OTHER BELIEF SYSTEM AFFILIATION CODE

**RELIGIOUS OR OTHER BELIEF SYSTEM AFFILIATION GROUP CODE**

Change to Attribute: New Attribute

The RELIGIOUS OR OTHER BELIEF SYSTEM AFFILIATION GROUP of a PERSON, as specified by a PERSON.

Note: This is the Religious Affiliation of a PERSON, not their Religion.

*National codes:*

- A Baha'i
- B Buddhist
- C Christian
- D Hindu
- E Jain
- F Jewish
- G Muslim
- H Pagan
- I Sikh
- J Zoroastrian
- K Other
- L None
- M Declines to Disclose
- N Patient Religion Unknown

**RELIGIOUS OR OTHER BELIEF SYSTEM AFFILIATION CODE**



---

Change to Data Element: New Data Element

Format/length:	an4
HES item:	
National Codes:	See RELIGIOUS OR OTHER BELIEF SYSTEM AFFILIATION CODE
Default Codes:	

**Notes:**

RELIGIOUS OR OTHER BELIEF SYSTEM AFFILIATION CODE is the same as attribute RELIGIOUS OR OTHER BELIEF SYSTEM AFFILIATION CODE.

---

## RELIGIOUS OR OTHER BELIEF SYSTEM AFFILIATION CODE

---

Change to Data Element: New Data Element

### RELIGIOUS OR OTHER BELIEF SYSTEM AFFILIATION CODE

**Attribute:**

RELIGIOUS OR OTHER BELIEF SYSTEM AFFILIATION CODE
---

For enquiries about this Data Set Change Notice, please contact [datastandards@nhs.net](mailto:datastandards@nhs.net)