

# Consumer Price Inflation, April 2013



Coverage: UK

Date: 21 May 2013

Geographical Area: UK

Theme: **Economy**

## Key points

- The Consumer Prices Index (CPI) grew by 2.4% in the year to April 2013, down from 2.8% in March.
- By far the largest downward contribution came from transport costs (notably motor fuels and air fares).
- The only notable upward contribution came from price movements for food & non-alcoholic beverages.
- This is the first time that the growth in inflation has slowed since Autumn 2012. Over the last six months, the CPI 12-month rate has been particularly stable.
- CPIH, the new measure of consumer price inflation including owner occupiers' housing costs, grew by 2.2% in the year to April 2013, down from 2.6% in March.
- The slower growth in CPIH than CPI is due principally to owner occupiers' housing costs increasing more slowly than overall inflation for other consumer goods and services in the year to April.
- The format of this bulletin changed with the publication of February data. Please see the 'Guide to Data' section of the bulletin for further information on where to find all ONS consumer price statistics including CPI, CPIH, RPI and RPIJ. If you have any comments on the new format, please email [cpi@ons.gsi.gov.uk](mailto:cpi@ons.gsi.gov.uk).

## A brief description of Consumer Price Inflation

Consumer price inflation is the speed at which the prices of the goods and services bought by households rise or fall. Consumer price inflation is estimated by using price indices. One way to

understand a price index is to think of a very large shopping basket containing all the goods and services bought by households. The price index estimates changes to the total cost of this basket. ONS consumer price indices are published monthly.

A price index can be used to measure inflation in a number of ways. The most common is to look at how the index has changed over a year. This is calculated by comparing the price index for the latest month with the same month a year ago. This is known as the 12-month inflation rate. This bulletin measures inflation to April 2013, so the 12-month rate measures changes in prices between April 2012 and April 2013.

ONS publishes a range of measures of consumer price and other price inflation. [A tale of many price indices](#) summarises information on the different measures.

## Consumer Prices Index (CPI)

### What is the CPI?

The CPI is a measure of consumer price inflation produced to international standards and in line with European regulations. First published in 1997 as the Harmonised Index of Consumer Prices (HICP), the CPI is the inflation measure used in the Government's target for inflation.

The CPI is also used for purposes such as uprating pensions, wages and benefits and can aid in the understanding of inflation on family budgets. For more information on the uses of the CPI see [How ONS consumer price statistics are used](#).

### Latest Figure and Long-Term Trend

The CPI 12-month rate (the amount prices change over a year) between April 2012 and April 2013 stood at 2.4%. This means that a basket of goods and services that cost £100.00 in April 2012 would have cost £102.40 in April 2013.

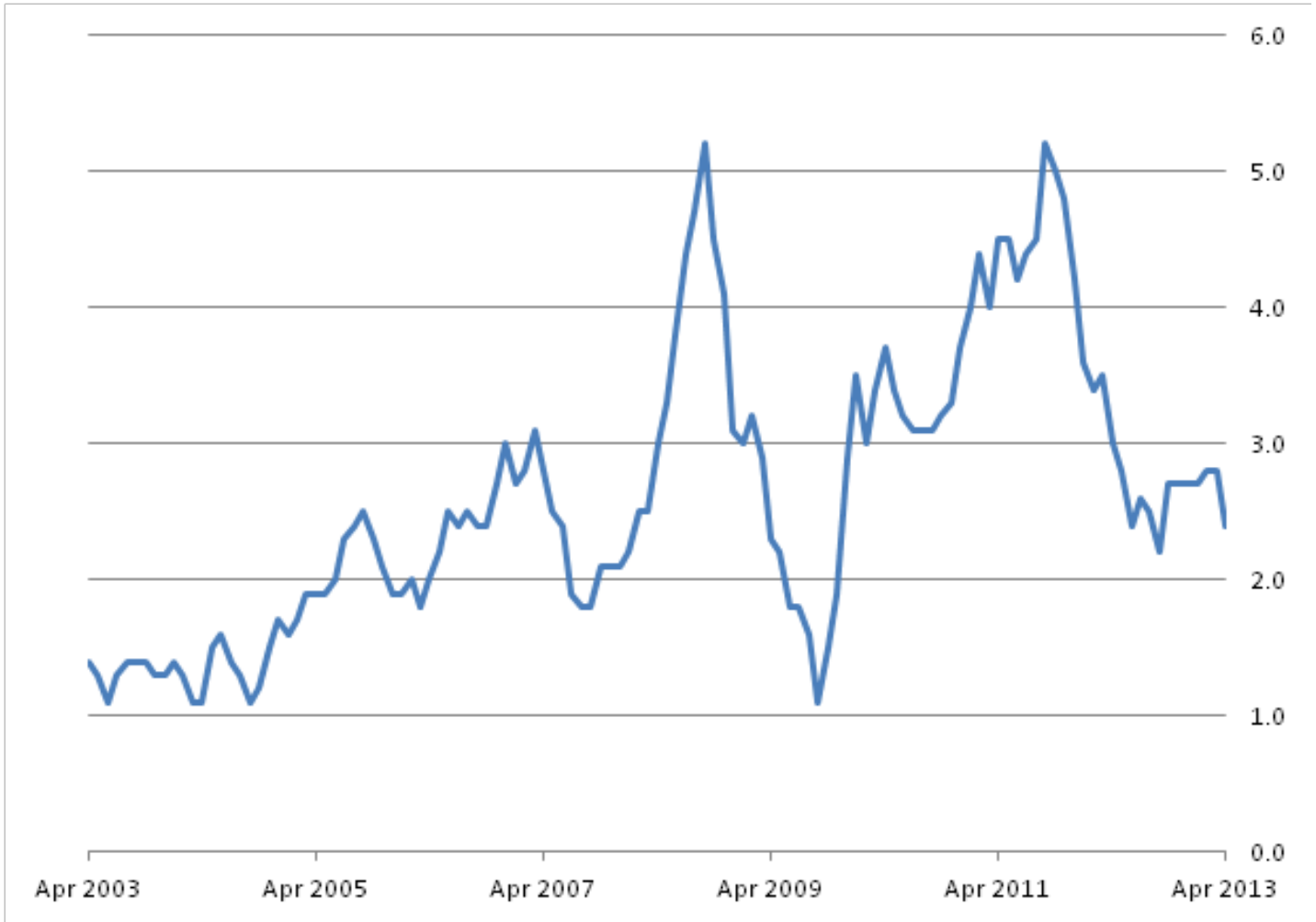
This is the first time the 12-month rate has fallen since the increase in tuition fees contributed to the growth in the CPI rising to 2.7% in October 2012. The intervening six months have seen inflation remain relatively stable.

Taking a longer term view, the three main contributors to the 12-month inflation rate in the last five years have been food & non-alcoholic beverages, housing costs (including gas and electricity charges) and transport costs (including motor fuels). Combined, these three sectors have, on average, accounted for over half of the 12-month inflation rate each month.

Figure A below shows the CPI 12-month rate over the last ten years. Table A below shows the CPI 1-month (the amount prices change between two consecutive months) and 12-month rates and index values for the last year. A larger version of the chart can be viewed by clicking on it ([HTML version only](#)).

**Figure A: CPI 12-month rate for the last ten years: April 2003 to April 2013**

United Kingdom



Source: Office for National Statistics

**Download chart**

[XLS](#) [XLS format](#)  
(28.5 Kb)

**Table A: CPI index values, 1-month and 12-month inflation rates: April 2012 to April 2013**

United Kingdom

		Index <sup>1</sup> (UK, 2005 = 100)	1-month rate	12-month rate
<b>2012</b>	Apr	122.9	0.6	3.0
	May	122.8	-0.1	2.8
	Jun	122.3	-0.4	2.4
	Jul	122.5	0.1	2.6
	Aug	123.1	0.5	2.5
	Sep	123.5	0.4	2.2
	Oct	124.2	0.5	2.7
	Nov	124.4	0.2	2.7
	Dec	125.0	0.5	2.7
	<b>2013</b>	Jan	124.4	-0.5
Feb		125.2	0.7	2.8
Mar		125.6	0.3	2.8
Apr		125.9	0.2	2.4

**Table source:** Office for National Statistics**Table notes:**

1. All items Consumer Prices Index.

**Download table**
[XLS](#) [XLS format](#)

(21 Kb)

**Consumer Prices Index (CPI): What are the main movements?**

This section explains which goods and services had the biggest impact on the change to the 12-month rate between March and April 2013 and (where relevant) considers the longer-term inflationary trends for these goods and services.

The change in the CPI 12-month rate can be calculated by comparing the 12-month rates for two consecutive months. An alternative, and equally valid approach, is to calculate it by comparing the price change between the latest two months and the price change between the same two months a year ago. [Explaining the contributions to change in twelve month rate](#) is a diagrammatic explanation of the calculation.

The CPI rose by 0.2% between March and April 2013, compared with a larger rise of 0.6% between the same two months in 2012. The smaller 1-month movement this year led to the CPI 12-month rate falling from 2.8% in the year ending March to 2.4% in April.

Figure B below shows the contributions from each part of the CPI basket of goods and services. A larger version of the chart can be viewed by clicking on it (HTML version only).

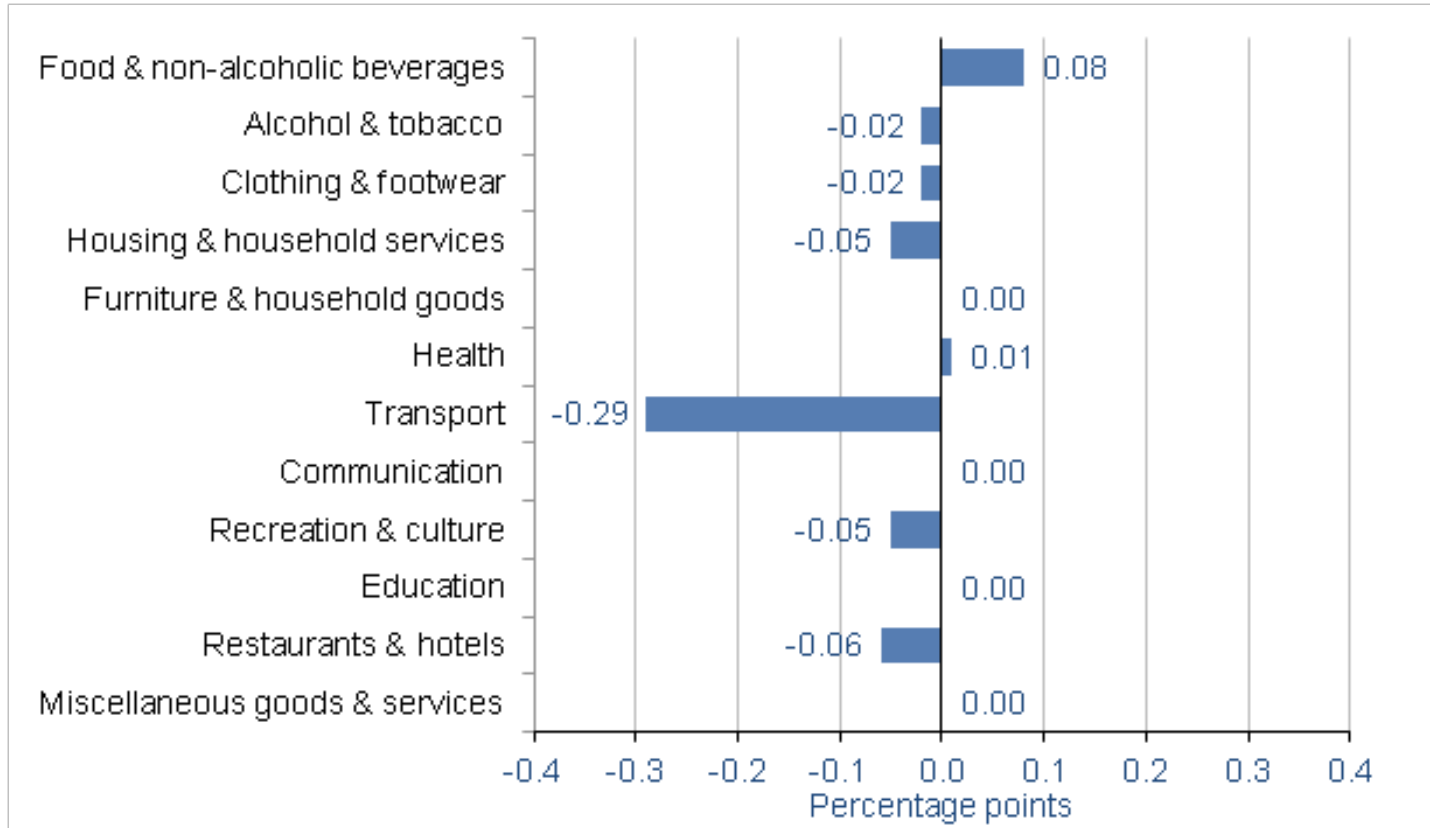
By far the largest downward contribution to the change, accounting for almost three quarters of the fall in the growth rate in the CPI 12-month rate between March and April 2013, came from **transport** price movements where overall, prices fell by 0.6% between March and April 2013 compared with a rise of 1.2% between the same two months a year ago. This contributed approximately 0.3 percentage points to the fall in the CPI 12-month rate. The majority of the contribution came from motor fuels and air fares. Petrol and diesel prices both fell, overall, between March and April this year (by 2.1p and 3.9p a litre respectively) compared with rises of 3.2p and 2.1p a year earlier. The price (in pounds sterling) of a barrel of Brent crude fell by 6.8% between March and April 2013. Prices, overall, for air fares fell by 6.4% between March and April 2013, compared with a rise of 7.4% between the same two months a year ago.

There were comparatively modest downward contributions from most other sectors, notably from price movements for restaurants & hotels, recreation & culture goods and services and housing costs (including energy costs).

The only notable upward contribution to the change in the CPI 12-month rate between March and April 2013, came from **food & non-alcoholic beverages** price movements where overall, prices rose by 0.7% between March and April compared with a fall of 0.1% between the same two months in 2012. The upward effect came from most types of foodstuff – most notably vegetables where there have been numerous recoveries of prices following sales and reports of cold weather in the UK impacting on crop production.

**Figure B: Contributions to the change in the CPI 12-month rate: April 2013**

United Kingdom



Source: Office for National Statistics

**Notes:**

1. Individual contributions may not sum to the total due to rounding.
2. More information on the contents of each group can be found in table 3 at the end of the bulletin.

**Download chart**

[XLS](#) [XLS format](#)  
(19.5 Kb)

**Other measures of Consumer Price Inflation**

**CPIH**

CPIH is a new measure of UK consumer price inflation that includes owner occupiers’ housing costs (OOH). These are the costs associated with owning, maintaining and living in one’s own home. CPIH uses an approach called rental equivalence to measure OOH. Rental equivalence uses the rent paid for an equivalent house as a proxy for the costs faced by an owner occupier. In other words this answers the question “how much would I have to pay in rent to live in a home like mine?” for an owner occupier. OOH currently accounts for just over 12% of the expenditure weight of CPIH. This has increased gradually from a weight of 10% in 2005.

Currently, the method of calculation, the population coverage and the basket of goods and services are the same as the Consumer Prices Index (CPI), with the exception of OOH. The method of deriving the weights for CPIH and the data used for these are also the same as for CPI, with the exception of OOH. This can result in some differences from the CPI.

ONS currently classifies CPIH as an [experimental statistic](#). It is being assessed for National Statistics status by the assessment team of the UK Statistics Authority and is not currently a National Statistic. The assessment is expected to be completed by the summer of 2013. For further information on CPIH please see [Introducing the new CPIH measure of Consumer Price Inflation, 2005 to 2012](#).

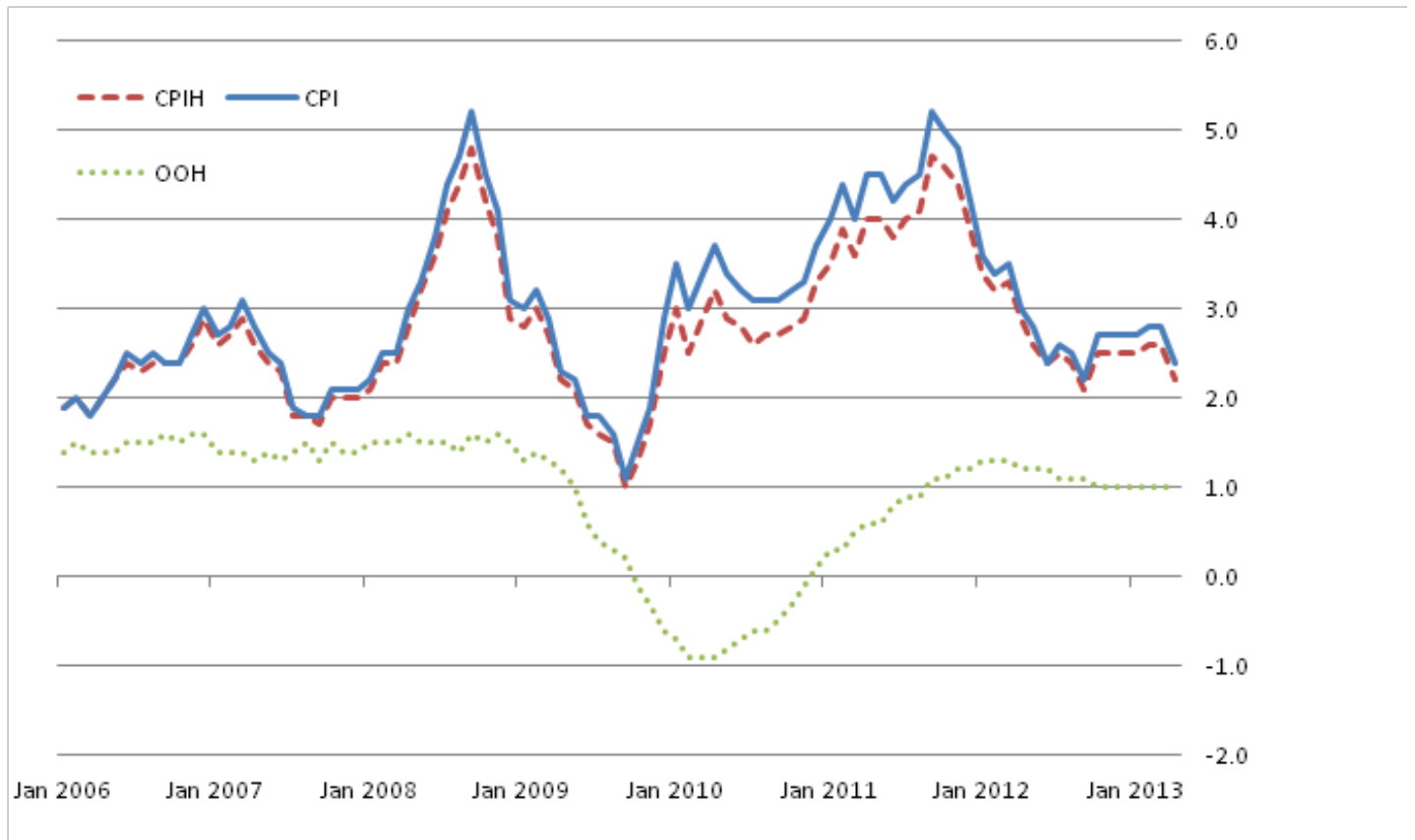
In April 2013, the 12-month rate (the rate at which prices increased between April 2012 and April 2013) for CPIH grew by 2.2%, down from 2.6% in March.

The difference between the CPI and CPIH annual rates in April 2013 was 0.2 percentage points, the same as in March. Owner occupiers' housing costs rose by 0.1% between March and April 2013, and also by 0.1% between March and April 2012. The 1-month movement was therefore the same in both years and this meant that OOH had no impact on the change in the overall CPIH 12-month rate between the two months.

Figure C below shows the CPIH and OOH component 12-month rates since January 2006 (the earliest date for which CPIH inflation can be calculated). The CPI 12-month rate has been included for comparative purposes. Table B below shows the CPIH and OOH component 1-month and 12-month rates and index numbers for the last year. A larger version of the chart can be viewed by clicking on it (HTML version only).

**Figure C: CPIH, OOH component and CPI 12-month rates since January 2006**

United Kingdom



Source: Office for National Statistics

**Notes:**

1. The time series for this chart will be gradually increased up to a time span of ten years as more periods of data become available.
2. ONS currently classifies CPIH and OOH as experimental statistics. These are not currently National Statistics.

**Download chart**

[XLS](#) [XLS format](#)  
(28.5 Kb)



**Table B: CPIH and OOH component index values, 1-month and 12-month rates**

United Kingdom

		CPIH Index <sup>1</sup> (UK, 2005 = 100)	OOH Index <sup>1</sup> (UK, 2005 = 100)	CPIH 1- month <sup>1</sup> rate	OOH 1- month <sup>1</sup> rate	CPIH 12- month <sup>1</sup> rate	OOH 12- month <sup>1</sup> rate
<b>2012</b>	Apr	121.1	106.2	0.5	0.1	2.9	1.2
	May	121.1	106.3	0.0	0.1	2.6	1.2
	Jun	120.6	106.4	-0.4	0.1	2.4	1.2
	Jul	120.8	106.5	0.1	0.1	2.5	1.1
	Aug	121.3	106.6	0.5	0.1	2.4	1.1
	Sep	121.7	106.6	0.3	0.1	2.1	1.1
	Oct	122.3	106.7	0.5	0.1	2.5	1.0
	Nov	122.5	106.9	0.2	0.1	2.5	1.0
	Dec	123.0	107.0	0.4	0.1	2.5	1.0
<b>2013</b>	Jan	122.5	107.2	-0.4	0.2	2.5	1.0
	Feb	123.2	107.2	0.6	0.0	2.6	1.0
	Mar	123.6	107.2	0.3	0.1	2.6	1.0
	Apr	123.8	107.3	0.2	0.1	2.2	1.0

Table source: Office for National Statistics

**Table notes:**

1. CPIH is currently designated as an experimental statistic by ONS.

**Download table**

**XLS** [XLS format](#)  
(22.5 Kb)

**Retail Prices Index (RPI) and RPIJ**

In accordance with the Statistics and Registration Service Act 2007, the Retail Prices Index and its derivatives have been assessed against the Code of Practice for Official Statistics and found not to meet the required standard for designation as National Statistics. The [full assessment report](#) can be found on the UK Statistics Authority website.

The RPI is a long-standing measure of UK inflation that has historically been used for a wide range of purposes such as the indexation of pensions and rents and index-linked gilts. For further

information on current and historic uses of the RPI please see [How ONS consumer price statistics are used](#).

RPIJ is an improved variant of the Retail Prices Index (RPI) which is calculated using formulae that meet international standards. The primary purpose of RPIJ is to enable users of the RPI to understand the impact the use of the Carli formula (which does not meet international standards) has on the RPI inflation rate.

ONS currently classifies RPIJ as an [experimental statistic](#). It is being assessed for National Statistics status by the assessment team of the UK Statistics Authority, but is not currently a National Statistic. The assessment is expected to be completed by the summer of 2013. For further information on RPIJ please see [Introducing the new RPIJ measure of Consumer Price Inflation, 1997 to 2012](#).

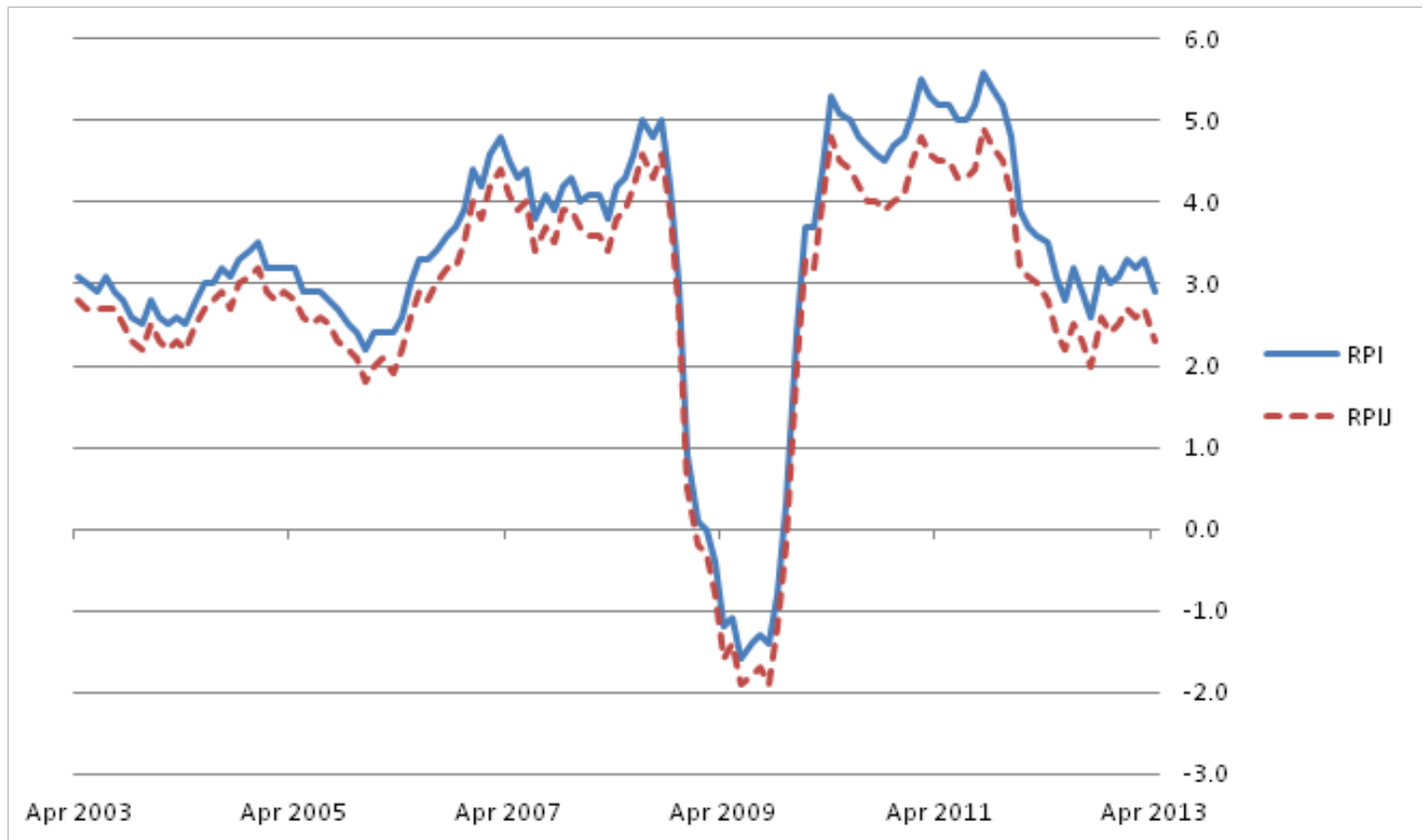
In April 2013, the 12-month rate (the rate at which prices increased between April 2012 and April 2013) for RPIJ grew by 2.3%, down from 2.7% in March 2013. The RPI 12-month rate for April grew by 2.9%, meaning that it was 0.6 percentage points higher than it would have been had it used formulae that meet international standards.

Figure D below shows the RPI and RPIJ 12-month rates for the last ten years. Over this period the RPIJ 12-month rate has been on average 0.5 percentage points lower than the RPI. Cumulatively, inflation as measured by the RPI is 37.7% over this period, compared with 31.5% as measured by the RPIJ. The use of the Carli formula has therefore added 6.2 percentage points to the change in prices over the last ten years. A larger version of the chart can be viewed by clicking on it (HTML version only).

Table C shows the RPI and RPIJ 1-month and 12-month rates and index numbers over the last year.

**Figure D: RPI and RPIJ 12-month rates for the last ten years: April 2003 to April 2013**

United Kingdom



Source: Office for National Statistics

**Notes:**

1. The contents of this chart fall outside the scope of National Statistics. The RPI has been de-designated as a National Statistic and RPIJ is currently designated as an experimental statistic by ONS.

**Download chart**

[XLS](#) [XLS format](#)  
(29.5 Kb)

**Table C: RPI and RPIJ index values, 1-month and 12-month rates**

United Kingdom


		RPI Index <sup>1</sup> (UK, 1987 = 100)	RPIJ Index <sup>1</sup> (UK, 1987 = 100)	RPI 12- month <sup>1</sup> rate	RPIJ 12- month <sup>1</sup> rate	RPI 1- month <sup>1</sup> rate	RPIJ 1- month <sup>1</sup> rate
<b>2012</b>	Apr	242.5	227.9	3.5	2.8	0.7	0.6
	May	242.4	227.8	3.1	2.4	0.0	0.0
	Jun	241.8	227.1	2.8	2.2	-0.2	-0.3
	Jul	242.1	227.4	3.2	2.5	0.1	0.1
	Aug	243.0	228.2	2.9	2.3	0.4	0.4
	Sep	244.2	229.2	2.6	2.0	0.5	0.4
	Oct	245.6	230.5	3.2	2.6	0.6	0.6
	Nov	245.6	230.5	3.0	2.4	0.0	0.0
	Dec	246.8	231.5	3.1	2.5	0.5	0.4
<b>2013</b>	Jan	245.8	230.6	3.3	2.7	-0.4	-0.4
	Feb	247.6	231.7	3.2	2.6	0.7	0.5
	Mar	248.7	232.6	3.3	2.7	0.4	0.4
	Apr	249.5	233.2	2.9	2.3	0.3	0.3

Table source: Office for National Statistics

**Table notes:**

1. The contents of table fall outside the scope of National Statistics. The RPI has been de-designated as a National Statistic and RPIJ is currently designated as an experimental statistic by ONS.

**Download table**

 [XLS format](#)  
(23.5 Kb)

For users who want to understand the causes of the difference between the CPI and RPI, please see Table 5 in the Consumer Price Inflation Reference Tables of the April Release on the ONS website.

**Guide to Data**

Table D outlines where data for all consumer price inflation statistics can be found.

**Table D: Guide to Data**

	Statistical Bulletin	Detailed Briefing Note	Reference Tables (Excel Format)	Time Series Dataset
CPI	H, T, D	H, D	H, T, D	T, D
CPIY		H	H, T	T
CPI-CT		H	H, T	T
CPIH <sup>1</sup>	H, T, D	H	H, T, D	T, D
CPIHY <sup>1</sup>		H	H, T	T
RPIJ <sup>1</sup>	H, T	H	H, T	T
RPI <sup>2</sup>	H, T	H, D	H, T, D	T, D
RPIX <sup>2</sup>		H	H, T	T
RPIY <sup>2</sup>		H	H, T	T
SARPIY <sup>2</sup>		H	H, T	T
TPI <sup>2</sup>		H	H, T	T
RPI Pensioner Indices <sup>2</sup>			H, T	T
International Comparisons			H, T	T

**Table source:** Office for National Statistics

**Table notes:**

1. These statistics are currently designated as experimental statistics by ONS.
2. These statistics are not National Statistics.
3. H = Latest headline figures, D = Detailed data (including disaggregations), T = Time series data.

**Download table**

[XLS](#) [XLS format](#)  
(19.5 Kb)

**Background notes**

**1. UK Statistics Authority review of consumer price statistics**

On 16 May 2013, the UK Statistics Authority announced the launch of two reviews relating to price indices. The first review will consider what changes are needed to the range of consumer price statistics produced for the UK to best meet current and future needs. The second review will consider matters relating to the governance arrangements and structures supporting the

production of consumer price statistics by ONS. For further details please see the [UK Statistics Authority website](#).

## 2. Next month

Consumer price inflation for May 2012 to May 2013 will be published on 18 June 2013.

On 30 May 2013 ONS will publish the Index of Private Housing Rental Prices (IPHRP) for the first time. This is an experimental series that measures the changes in price charged for renting private housing. The series will include a price index for Great Britain, its constituent countries and for the English regions. The production of this series is possible due to recent improvements in the housing components of the consumer price indices. Although the same data sources are used by both, the methodology of the IPHRP has been developed in order to produce region level series.

## 3. CPIH and RPIJ measures of consumer price inflation and the de-designation of RPI as a national statistic

Two new measures of consumer price inflation, CPIH and RPIJ, were introduced with the February 2013 dataset published on 19 March.

ONS currently classifies both CPIH and RPIJ as [experimental statistics](#). They are being assessed for National Statistics status by the assessment team of the UK Statistics Authority and are not currently National Statistics. The assessment is expected to be completed by the summer of 2013. For further information on the measures see [Introducing the new CPIH measure of Consumer Price Inflation, 2005 to 2012](#) and [Introducing the new RPIJ measure of Consumer Price Inflation, 1997 to 2012](#).

In developing her recommendations for RPIJ, the National Statistician noted that there is significant value to users in maintaining the continuity of the existing RPI's long time series, without any major change, so that it may continue to be used for long-term indexation and for index-linked gilts and bonds in line with user expectations. The UK Statistics Authority accepted this recommendation.

In accordance with the Statistics and Registration Service Act 2007, the Retail Prices Index and its derivatives have been assessed against the Code of Practice for Official Statistics and found not to meet the required standard for designation as National Statistics. The [full assessment report](#) can be found on the UK Statistics Authority website.

## 4. Methodology

The CPI, CPIH, RPIJ and RPI are compiled using the same underlying price data, based on a large and representative selection of almost 700 individual goods and services for which price movements are measured in around 150 randomly selected areas throughout the UK. Around 180,000 separate price quotations are used every month to compile the indices. The outlets in which the prices are collected are selected randomly. Expenditure weights are held constant for one year at a time.

The selection of goods and services that are priced to compile these indices is reviewed annually. The contents of the 2013 basket are described in an article [Consumer Prices Index and Retail Prices Index: the 2013 Basket of Goods and Services \(354.4 Kb Pdf\)](#). The expenditure weights used to compile the indices are also updated each year. Additional details of the updated weights for 2013 are available from the National Statistics website in an article published on 26 April 2013 entitled [Consumer Prices Index and Retail Prices Index: Updating Weights for 2013](#).

Rates of change for the CPI and CPIH are calculated from unrounded index levels, rather than from the published indices, which are rounded to one decimal place. The use of unrounded indices increases the accuracy of the calculation. The unrounded index levels for the CPI are available on request. By contrast, rates of change for the RPI and RPIJ are calculated from the published rounded indices.

## 5. Revisions Policy

CPI indices are revisable although the only time the CPI all items index has been revised was when the index was re-referenced to 2005=100, which took place with the publication of the January 2006 indices.

ONS currently classifies both CPIH and RPIJ as [experimental statistics](#). They currently follow revisions practices for CPI and RPI and specific policies have yet to be developed.

Once the RPI indices are published they are never revised.

## 6. Comparability

The CPI's coverage of goods and services was extended in stages in the areas of health, education, childcare and insurance, with effect from the January 2000, 2001 and 2002 indices. In 2000, there was also a change to the population basis for the weights which was broadened from private households to include expenditure by foreign visitors and residents of institutional households. Further details can be found in a series of articles in the [CPI methodology section](#) of the Office for National Statistics website.

The official CPI series starts in 1996 but estimates for earlier periods are available back to 1988. These estimates are broadly consistent with data from 1996 but should be treated with some caution. [Harmonised Index of Consumer Prices: Historical Estimates \(106 Kb Pdf\)](#) provides more detail.

The CPIH's coverage of goods and services is currently the same as the CPI's, with the addition of a measure of owner occupiers' housing costs. A historical backseries is available back to 2005. Further details can be found in [Introducing the new CPIH measure of Consumer Price Inflation, 2005 to 2012](#).

RPI data are available back to 1947 but have been re-referenced on several occasions since then, generally accompanied by changes to the coverage and/or structure of the detailed sub-

components. Details of these changes are given in Appendices 1 and 2 of the [Consumer Price Indices Technical Manual](#).

RPIJ data are available back to 1997. Further details can be found in [Introducing the new RPIJ measure of Consumer Price Inflation, 1997 to 2012](#).

## 7. Other measures of inflation – main uses and methodological details

Detailed explanations of the main uses and methodology used to construct the RPI and how it differs from the CPI can be found in Chapter 9 of the [Consumer Price Indices Technical Manual](#). More information on CPIH and RPIJ can be found in the articles linked above. Information on those measures will be added to the Technical Manual when it is next updated. [How ONS consumer price statistics are used \(67.2 Kb Pdf\)](#) provides further details of how consumer price statistics are used more generally.

## 8. Accessibility

The most efficient way to access the latest consumer price inflation data and briefing on the ONS website is via the CPI key figure on the [homepage](#).

In response to user feedback, all consumer price inflation data are available in one location. The [Consumer Price Inflation Reference Tables \(1.22 Mb Excel sheet\)](#) are provided via an excel file.

To further help users, very detailed CPI data are now available including the [individual price quotes and item indices](#) that underpin the CPI. Please note the data published are at a level which means that no individual retailer or service provider will be able to be identified. The data published covers January 1996 to December 2012. These data are updated once a quarter with around a two month lag with the latest CPI publication. For example, the data will next be updated when the May CPI is published on 18 June 2013, at which point the detailed data published will be extended to March 2013.

This bulletin includes the April 2013 data, collected on 16 April 2013. Future [publication dates \(43.6 Kb Pdf\)](#) for this statistical bulletin are available to January 2014.

Internationally, the CPI is known as the Harmonised Index of Consumer Prices (HICP). HICPs are calculated in each Member State of the European Union according to rules specified in a series of European regulations developed by the European Commission (Eurostat) in conjunction with the EU Member States. Eurostat released figures for the Harmonised Index of Consumer Prices (HICP) for the month of April 2013 for EU Member States, together with an EU average, on 16 May 2013. A summary of the latest European data is available from [Eurostat's database tables](#). Further information on HICP for the European Union, Eurozone and other EU Member States is available from [Eurostat's HICP web page](#).

## 9. Further information

A more detailed [quality report \(141.9 Kb Pdf\)](#) for this statistical bulletin is available. The report assesses consumer price inflation statistics against standard dimensions of quality such as relevance, accuracy and accessibility. The report was last updated in December 2011.



The [mini Triennial Review \(1.75 Mb Pdf\)](#) of the CPI and RPI Central Collection of Prices is available.

A full description of how consumer price indices are compiled is given in the [Consumer Price Indices Technical Manual \(754.3 Kb Pdf\)](#). This is supplemented by other technical articles available from the [guidance and methodology section](#) of the ONS website.

Further information on consumer price inflation statistics, including details of the methodology used to construct the indices, articles, historic data etc, is available on the [Consumer Price Indices Taxonomy page](#).

## 10. General

Details of the policy governing the release of new data are available from the Media Relations Office. Also available is a list of the names of those given [pre-release access](#) to the contents of this release.

Follow us on [Twitter](#) or join us at [Facebook](#). View the latest podcasts on [YouTube](#).

As with all National and candidate National Statistics, the new suite of inflation statistics (CPIH, its derivatives and RPIJ) will be subject to independent assessment by the Authority under the supervision of the Authority's Head of Assessment. The Board of the Authority has asked for this statutory assessment to be completed by summer 2013.

Once statistics have been designated as National Statistics it is a statutory requirement that the Code of Practice shall continue to be observed.

## 11. Media contact:

Tel: Luke Croydon + 44 (0) 845 6041858

Out of hours media line + 44 (0) 7867 906553

Email: [media.relations@ons.gsi.gov.uk](mailto:media.relations@ons.gsi.gov.uk)

Statistical contact:

Tel: Richard Campbell +44 (0) 1633 651536

Email: [richard.campbell@ons.gsi.gov.uk](mailto:richard.campbell@ons.gsi.gov.uk)

Email: [cpi@ons.gsi.gov.uk](mailto:cpi@ons.gsi.gov.uk)

CPI/RPI recorded message (available after 9.45am on release day):

Tel: + 44 (0) 1633 456961

CPI/RPI Enquiries:

Tel: + 44 (0) 1633 456900

12. Details of the policy governing the release of new data are available by visiting [www.statisticsauthority.gov.uk/assessment/code-of-practice/index.html](http://www.statisticsauthority.gov.uk/assessment/code-of-practice/index.html) or from the Media Relations Office email: [media.relations@ons.gsi.gov.uk](mailto:media.relations@ons.gsi.gov.uk)

These National Statistics are produced to high professional standards and released according to the arrangements approved by the UK Statistics Authority.

## Copyright

© Crown copyright 2013

You may use or re-use this information (not including logos) free of charge in any format or medium, under the terms of the Open Government Licence. To view this licence, visit [www.nationalarchives.gov.uk/doc/open-government-licence/](http://www.nationalarchives.gov.uk/doc/open-government-licence/) or write to the Information Policy Team, The National Archives, Kew, London TW9 4DU, or email: [psi@nationalarchives.gsi.gov.uk](mailto:psi@nationalarchives.gsi.gov.uk).

This document is also available on our website at [www.ons.gov.uk](http://www.ons.gov.uk).

## Statistical contacts

Name	Phone	Department	Email
Richard Campbell	+44 (0)1633 651536	Prices, ONS	<a href="mailto:cpi@ons.gsi.gov.uk">cpi@ons.gsi.gov.uk</a>

---

### Next Publication Date:

18 June 2013

### Issuing Body:

Office for National Statistics

### Media Contact Details:

Telephone: 0845 604 1858  
(8.30am-5.30pm Weekdays)

Emergency out of hours (limited service): 07867 906553

Email:

[media.relations@ons.gsi.gov.uk](mailto:media.relations@ons.gsi.gov.uk)

# 1 CPI: Detailed figures by division<sup>1, 3</sup>

COICOP Division	Food and non-alcoholic beverages	Alcoholic beverages and tobacco	Clothing and footwear	Housing, water, electricity, gas & other fuels	Furniture, household equipment & routine maintenance	Health <sup>2</sup>	Transport	Communication	Recreation and culture	Education <sup>2</sup>	Restaurants and hotels	Miscellaneous goods and services <sup>2</sup>	CPI (overall index)
	01	02	03	04	05	06	07	08	09	10	11	12	
<b>Weights</b>													
	CHZR	CHZS	CHZT	CHZU	CHZV	CHZW	CHZX	CHZY	CHZZ	CJUJ	CJUV	CJUW	CHZQ
2013	106	44	68	137	59	25	148	31	141	21	117	103	1 000
<b>Monthly indices (2005=100)</b>													
	D7BU	D7BV	D7BW	D7BX	D7BY	D7BZ	D7C2	D7C3	D7C4	D7C5	D7C6	D7C7	D7BT
2011 Apr	131.9	133.5	80.9	135.5	114.0	119.4	133.5	103.3	101.1	160.2	121.4	115.7	119.3
May	133.6	134.4	81.1	135.4	114.4	119.2	132.5	104.3	100.9	160.2	122.0	116.4	119.5
Jun	134.9	133.6	79.6	135.5	114.9	119.2	132.9	103.3	100.0	160.2	122.2	116.4	119.4
Jul	135.3	134.5	76.8	136.0	113.6	119.9	133.7	104.2	100.0	160.2	122.4	116.7	119.4
Aug	135.5	133.7	79.7	136.7	115.9	120.5	134.9	104.3	99.6	160.2	122.7	117.2	120.1
Sep	135.8	134.7	83.2	141.5	117.3	120.8	132.1	105.3	99.7	164.0	123.2	117.2	120.9
Oct	134.6	134.7	83.9	142.3	116.6	120.9	131.2	105.1	100.4	168.3	123.2	117.6	121.0
Nov	135.4	135.1	84.8	142.8	117.7	121.1	130.5	105.0	100.1	168.3	123.4	117.6	121.2
Dec	137.3	133.0	82.4	143.1	118.9	120.8	133.4	106.3	100.4	168.3	123.5	118.0	121.7
2012 Jan	136.8	135.5	78.4	143.3	116.2	121.7	132.4	106.0	100.4	168.3	123.5	117.9	121.1
Feb	138.5	136.7	80.7	142.9	118.0	121.8	133.2	106.6	100.3	168.3	124.0	118.7	121.8
Mar	137.8	136.9	82.4	142.7	119.6	121.8	134.2	107.2	100.2	168.3	124.3	118.7	122.2
Apr	137.6	140.9	82.6	144.0	118.1	123.1	135.8	107.6	100.6	168.3	125.5	118.8	122.9
May	138.0	140.8	82.5	143.8	118.9	123.1	134.7	108.5	100.2	168.3	126.0	118.9	122.8
Jun	138.0	140.1	79.0	143.6	118.9	123.6	134.1	108.4	100.3	168.3	126.1	118.5	122.3
Jul	138.2	141.1	76.9	144.2	117.7	123.5	135.5	108.8	100.4	168.3	126.3	118.7	122.5
Aug	138.5	141.4	79.1	144.4	118.6	123.6	137.2	108.8	100.2	168.3	126.5	119.0	123.1
Sep	138.5	142.9	82.8	144.6	119.2	123.8	135.4	108.8	100.8	169.1	126.8	119.9	123.5
Oct	139.1	143.4	83.8	144.8	118.5	124.0	135.3	109.0	101.2	201.5	126.8	119.9	124.2
Nov	140.7	142.7	84.3	145.7	118.4	124.0	133.9	108.8	101.2	201.5	127.5	120.3	124.4
Dec	142.4	141.1	83.1	148.6	119.9	124.2	134.9	108.7	101.1	201.5	127.5	120.4	125.0
2013 Jan	142.6	147.1	78.6	148.4	117.2	124.4	134.0	109.7	101.0	201.5	127.5	119.6	124.4
Feb	143.5	146.3	80.2	149.1	118.9	124.4	135.7	110.8	101.5	201.5	127.8	119.7	125.2
Mar	142.9	145.6	82.1	149.1	119.8	124.7	136.5	110.8	102.0	201.5	128.1	120.0	125.6
Apr	143.9	148.9	82.0	150.1	118.3	126.1	135.6	111.0	102.0	201.5	128.7	120.2	125.9
<b>Percentage change on a year earlier</b>													
	D7G8	D7G9	D7GA	D7GB	D7GC	D7GD	D7GE	D7GF	D7GG	D7GH	D7GI	D7GJ	D7G7
2011 Apr	4.4	8.9	1.2	4.4	5.1	4.1	9.6	2.5	0.9	5.3	4.3	2.1	4.5
May	5.8	9.8	1.2	4.3	4.3	3.9	8.0	3.7	0.9	5.3	4.5	2.5	4.5
Jun	6.9	9.6	1.5	4.3	4.0	3.6	7.9	1.7	-0.5	5.3	4.5	1.9	4.2
Jul	6.2	10.3	3.1	4.6	4.8	3.5	7.8	2.5	-0.2	5.3	4.4	2.7	4.4
Aug	6.2	9.8	4.0	5.1	5.8	3.4	7.4	3.4	-0.8	5.3	4.6	2.8	4.5
Sep	6.4	10.0	2.1	8.6	5.3	3.6	8.9	5.9	-0.6	4.6	4.7	2.4	5.2
Oct	5.0	9.1	3.6	9.1	5.7	3.0	7.7	4.8	-0.5	5.1	4.5	2.8	5.0
Nov	4.0	9.7	2.8	9.2	5.0	3.3	7.2	4.9	-0.5	5.1	4.6	2.8	4.8
Dec	3.8	9.0	1.8	7.9	4.7	3.2	5.8	6.6	-0.7	5.1	4.4	2.7	4.2
2012 Jan	3.5	6.2	2.9	7.4	4.4	3.2	4.0	4.9	-0.5	5.1	3.1	2.9	3.6
Feb	3.7	8.3	2.2	6.8	4.6	3.5	3.7	4.1	-0.9	5.1	2.9	2.9	3.4
Mar	4.6	8.0	3.2	6.2	4.1	2.8	3.3	4.8	-0.6	5.1	2.9	2.7	3.5
Apr	4.3	5.5	2.1	6.2	3.7	3.1	1.7	4.2	-0.5	5.1	3.3	2.7	3.0
May	3.3	4.8	1.6	6.2	3.9	3.3	1.7	4.1	-0.7	5.1	3.3	2.1	2.8
Jun	2.3	4.8	-0.8	6.0	3.5	3.7	0.9	4.9	0.3	5.1	3.1	1.9	2.4
Jul	2.1	5.0	0.1	6.1	3.5	3.0	1.3	4.4	0.4	5.1	3.2	1.7	2.6
Aug	2.2	5.8	-0.7	5.6	2.3	2.6	1.7	4.3	0.6	5.1	3.1	1.6	2.5
Sep	2.0	6.1	-0.5	2.2	1.7	2.4	2.5	3.4	1.2	3.2	3.0	2.3	2.2
Oct	3.4	6.5	-0.1	1.7	1.7	2.5	3.1	3.7	0.8	19.7	2.9	1.9	2.7
Nov	3.9	5.7	-0.6	2.0	0.6	2.5	2.6	3.7	1.0	19.7	3.3	2.3	2.7
Dec	3.8	6.0	0.8	3.9	0.9	2.8	1.1	2.2	0.7	19.7	3.2	2.0	2.7
2013 Jan	4.2	8.5	0.2	3.5	0.8	2.2	1.3	3.5	0.5	19.7	3.2	1.4	2.7
Feb	3.7	7.1	-0.6	4.4	0.7	2.1	1.9	4.0	1.2	19.7	3.1	0.9	2.8
Mar	3.7	6.3	-0.4	4.5	0.2	2.3	1.7	3.3	1.8	19.7	3.1	1.1	2.8
Apr	4.6	5.7	-0.6	4.2	0.1	2.5	-0.1	3.2	1.4	19.7	2.5	1.1	2.4

Key: - zero or negligible

<sup>1</sup> Inflation rates prior to 1997 and index levels prior to 1996 are estimated. (Details are given in *Economic Trends* No. 541 December 1998 available on the Office for National Statistics website)

<sup>2</sup> The coverage of these categories was extended in January 2000; further extensions to coverage came into effect in January 2001 for health and miscellaneous goods and services; the coverage of miscellaneous goods and services was further extended with effect from January 2002.

<sup>3</sup> More detailed CPI data are available at <http://www.ons.gsi.gov.uk>

Source: Office for National Statistics

## 2 CPI, CPIH, RPI and RPIJ Indices: the latest three years<sup>2</sup>

	Consumer Prices Index (CPI) <sup>1</sup>		Consumer Prices Index Housing (CPIH) <sup>3</sup>		Retail Prices Index (RPI) NOT NATIONAL STATISTICS <sup>4</sup>		Retail Prices Index Jevons (RPIJ) <sup>3</sup>	
	Index (2005=100)	Percentage change over 12 months	Index (2005=100)	Percentage change over 12 months	Index (Jan 13, 1987=100)	Percentage change over 12 months	Index (1987=100)	Percentage change over 12 months
	D7BT	D7G7	L522	L55O	CHAW	CZBH	KVR8	KVR9
2010 Apr	114.2	3.7	113.1	3.2	222.8	5.3	212.2	4.8
May	114.4	3.4	113.4	2.9	223.6	5.1	212.9	4.5
Jun	114.6	3.2	113.5	2.8	224.1	5.0	213.2	4.4
Jul	114.3	3.1	113.3	2.6	223.6	4.8	212.7	4.2
Aug	114.9	3.1	113.8	2.7	224.5	4.7	213.5	4.0
Sep	114.9	3.1	113.8	2.7	225.3	4.6	214.1	4.0
Oct	115.2	3.2	114.1	2.8	225.8	4.5	214.6	3.9
Nov	115.6	3.3	114.5	2.9	226.8	4.7	215.5	4.0
Dec	116.8	3.7	115.5	3.3	228.4	4.8	216.9	4.1
2011 Jan	116.9	4.0	115.6	3.5	229.0	5.1	217.6	4.5
Feb	117.8	4.4	116.4	3.9	231.3	5.5	219.1	4.8
Mar	118.1	4.0	116.7	3.6	232.5	5.3	220.0	4.6
Apr	119.3	4.5	117.7	4.0	234.4	5.2	221.7	4.5
May	119.5	4.5	117.9	4.0	235.2	5.2	222.4	4.5
Jun	119.4	4.2	117.9	3.8	235.2	5.0	222.3	4.3
Jul	119.4	4.4	117.9	4.0	234.7	5.0	221.8	4.3
Aug	120.1	4.5	118.5	4.1	236.1	5.2	223.0	4.4
Sep	120.9	5.2	119.2	4.7	237.9	5.6	224.6	4.9
Oct	121.0	5.0	119.3	4.6	238.0	5.4	224.6	4.7
Nov	121.2	4.8	119.5	4.4	238.5	5.2	225.1	4.5
Dec	121.7	4.2	120.0	3.9	239.4	4.8	225.9	4.1
2012 Jan	121.1	3.6	119.5	3.4	238.0	3.9	224.6	3.2
Feb	121.8	3.4	120.1	3.2	239.9	3.7	225.8	3.1
Mar	122.2	3.5	120.5	3.3	240.8	3.6	226.5	3.0
Apr	122.9	3.0	121.1	2.9	242.5	3.5	227.9	2.8
May	122.8	2.8	121.1	2.6	242.4	3.1	227.8	2.4
Jun	122.3	2.4	120.6	2.4	241.8	2.8	227.1	2.2
Jul	122.5	2.6	120.8	2.5	242.1	3.2	227.4	2.5
Aug	123.1	2.5	121.3	2.4	243.0	2.9	228.2	2.3
Sep	123.5	2.2	121.7	2.1	244.2	2.6	229.2	2.0
Oct	124.2	2.7	122.3	2.5	245.6	3.2	230.5	2.6
Nov	124.4	2.7	122.5	2.5	245.6	3.0	230.5	2.4
Dec	125.0	2.7	123.0	2.5	246.8	3.1	231.5	2.5
2013 Jan	124.4	2.7	122.5	2.5	245.8	3.3	230.6	2.7
Feb	125.2	2.8	123.2	2.6	247.6	3.2	231.7	2.6
Mar	125.6	2.8	123.6	2.6	248.7	3.3	232.6	2.7
Apr	125.9	2.4	123.8	2.2	249.5	2.9	233.2	2.3

Key: - zero or negligible

Source: Office for National Statistics

1 Inflation rates prior to 1997 and index levels prior to 1996 are estimated. (Details are given in Economic Trends No.541 December 1998 available on the Office for National Statistics website)

2 More detailed CPI, CPIH and RPI data are available at: <http://www.ons.gov.uk>

3 ONS currently classifies both CPIH and RPIJ as experimental statistics. They are being assessed for National Statistics status and are not currently National Statistics. The assessment of these statistics is expected to be completed by the summer of 2013. For further details on experimental statistics see: <http://www.statisticsauthority.gov.uk/news/assessment-and-designation-of-experimental-statistics>

4 In accordance with the Statistics and Registration Service Act 2007, the Retail Prices Index and its derivatives have been assessed against the code of Practice for Official Statistics and found not to meet the required standards for designation as National Statistics. A full report can be found at: <http://www.statisticsauthority.gov.uk/>

### 3 CPI: Detailed figures by divisions, groups and classes

	Weights			Index (2005=100)		Percentage change over 1 month					Percentage change over 12 months			
	2013	2012	2013	2012	2013	2012	2012	2012	2012	2012	2013	2013	2013	2013
		Apr	Apr	Apr	Apr	Apr	Aug	Sep	Oct	Nov	Dec	Jan	Feb	Mar
<b>CPI (Overall Index)</b>	1 000	122.9	125.9	0.6	0.2	2.5	2.2	2.7	2.7	2.7	2.7	2.8	2.8	2.4
01 Food and non-alcoholic beverages	106	137.6	143.9	-0.1	0.7	2.2	2.0	3.4	3.9	3.8	4.2	3.7	3.7	4.6
02 Alcoholic beverages and tobacco	44	140.9	148.9	2.9	2.3	5.8	6.1	6.5	5.7	6.0	8.5	7.1	6.3	5.7
03 Clothing and footwear	68	82.6	82.0	0.2	-	-0.7	-0.5	-0.1	-0.6	0.8	0.2	-0.6	-0.4	-0.6
04 Housing, water, electricity, gas and other fuels	137	144.0	150.1	0.9	0.6	5.6	2.2	1.7	2.0	3.9	3.5	4.4	4.5	4.2
05 Furniture, household equipment and maintenance	59	118.1	118.3	-1.2	-1.3	2.3	1.7	1.7	0.6	0.9	0.8	0.7	0.2	0.1
06 Health	25	123.1	126.1	1.1	1.2	2.6	2.4	2.5	2.5	2.8	2.2	2.1	2.3	2.5
07 Transport	148	135.8	135.6	1.2	-0.6	1.7	2.5	3.1	2.6	1.1	1.3	1.9	1.7	-0.1
08 Communication	31	107.6	111.0	0.4	0.3	4.3	3.4	3.7	3.7	2.2	3.5	4.0	3.3	3.2
09 Recreation and culture	141	100.6	102.0	0.4	-	0.6	1.2	0.8	1.0	0.7	0.5	1.2	1.8	1.4
10 Education	21	168.3	201.5	-	-	5.1	3.2	19.7	19.7	19.7	19.7	19.7	19.7	19.7
11 Restaurants and hotels	117	125.5	128.7	1.0	0.5	3.1	3.0	2.9	3.3	3.2	3.2	3.1	3.1	2.5
12 Miscellaneous goods and services	103	118.8	120.2	0.1	0.1	1.6	2.3	1.9	2.3	2.0	1.4	0.9	1.1	1.1
<b>All goods</b>	534	119.0	121.0	0.3	-0.1	1.8	1.4	1.5	1.5	2.0	1.9	1.9	2.0	1.7
<b>All services</b>	466	127.7	132.0	1.0	0.5	3.2	3.2	4.1	4.2	3.6	3.7	3.8	3.9	3.4
<b>All items CPI excluding Energy, food, alcoholic beverages and tobacco</b>	762	115.6	117.8	0.6	0.1	2.1	2.1	2.6	2.6	2.4	2.3	2.3	2.4	2.0
<b>01.1 Food</b>	93	137.5	144.4	-0.3	0.9	2.1	1.9	3.3	3.9	4.0	4.5	4.1	3.8	5.0
01.1.1 Bread and cereals	16	136.9	143.1	-0.6	0.3	1.5	1.1	1.3	3.9	3.2	4.1	3.0	3.6	4.6
01.1.2 Meat	21	134.3	138.7	-0.5	0.5	1.6	2.3	3.3	2.6	4.0	3.2	4.1	2.4	3.3
01.1.3 Fish	4	153.7	154.0	0.4	-0.7	4.1	1.9	2.6	0.8	3.6	3.3	1.6	1.3	0.2
01.1.4 Milk, cheese and eggs	13	134.9	135.5	-	0.3	-1.5	-0.5	0.4	0.1	0.6	0.7	-0.5	0.2	0.5
01.1.5 Oils and fats	2	159.5	167.4	0.2	3.8	-2.4	-3.8	-1.1	-1.3	0.2	-0.7	3.4	1.4	5.0
01.1.6 Fruit	9	126.8	142.3	-0.9	0.3	4.0	0.7	3.8	3.9	4.5	7.2	11.9	10.8	12.2
01.1.7 Vegetables including potatoes and tubers	14	138.6	152.2	-1.9	1.0	1.7	2.8	5.5	8.1	6.4	8.4	7.0	6.7	9.9
01.1.8 Sugar, jam, syrups, chocolate and confectionery	11	146.4	154.2	2.8	3.9	4.7	3.4	5.5	6.8	6.5	6.6	3.0	4.1	5.3
01.1.9 Food products (nec)	3	122.7	126.8	-1.9	-0.5	4.3	3.9	3.2	3.9	3.2	3.1	2.7	1.9	3.4
<b>01.2 Non-alcoholic beverages</b>	13	139.0	140.8	1.1	-0.6	3.1	2.8	3.8	4.0	2.1	2.4	0.7	3.0	1.3
01.2.1 Coffee, tea and cocoa	3	151.4	152.9	3.3	-0.1	4.5	-0.6	0.3	1.9	-0.2	0.6	2.4	4.4	1.0
01.2.2 Mineral waters, soft drinks and juices	10	135.3	137.1	0.3	-0.8	4.2	4.2	5.2	4.8	3.0	3.2	0.1	2.4	1.3
<b>02.1 Alcoholic beverages</b>	20	123.9	127.0	-	1.2	2.5	2.5	3.3	1.4	1.4	6.3	2.9	1.3	2.5
02.1.1 Spirits	6	131.1	135.1	0.5	2.2	6.8	4.6	5.3	3.2	2.9	9.5	4.3	1.3	3.1
02.1.2 Wine	9	123.7	128.2	0.4	2.6	0.1	0.9	2.6	1.0	0.6	4.0	1.2	1.4	3.6
02.1.3 Beer	5	115.1	114.1	-1.4	-2.6	2.9	3.0	2.1	-0.3	1.3	7.1	4.2	0.3	-0.8
<b>02.2 Tobacco</b>	24	154.9	166.4	5.1	3.2	8.3	8.8	8.9	8.8	9.3	9.3	9.4	9.5	7.4
<b>03.1 Clothing</b>	59	82.1	81.8	0.1	-	-0.7	-0.4	-0.2	-0.6	1.0	0.3	-0.6	-0.4	-0.4
03.1.2 Garments	54	80.5	80.1	0.1	-	-1.0	-0.7	-0.4	-0.8	1.0	0.4	-0.7	-0.4	-0.5
03.1.3 Other clothing and clothing accessories	4	98.6	99.4	-0.4	0.1	2.7	1.8	1.5	0.8	1.6	-1.3	-0.7	0.3	0.8
03.1.4 Cleaning, repair and hire of clothing	1	124.0	125.9	-	0.2	1.6	1.4	1.5	1.5	1.3	1.3	1.2	1.3	1.5
<b>03.2 Footwear including repairs</b>	9	85.0	83.1	1.1	-0.5	-0.8	-0.5	1.1	-0.6	-0.8	-0.5	-0.4	-0.6	-2.2
<b>04.1 Actual rentals for housing</b>	62	119.9	122.9	1.5	0.8	3.4	3.3	3.6	3.7	3.7	3.2	3.2	3.2	2.6
<b>04.3 Regular maintenance and repair of the dwelling</b>	16	132.4	131.5	-	-0.1	1.8	1.9	1.5	1.5	0.4	-0.2	-0.3	-0.6	-0.7
04.3.1 Materials for maintenance and repair	9	143.5	142.0	-	0.1	3.2	3.3	2.7	2.8	1.0	-0.2	-0.4	-1.1	-1.0
04.3.2 Services for maintenance and repair	7	118.3	117.8	0.1	-0.2	-0.3	-0.2	-0.2	-0.3	-0.3	-0.3	-0.3	-0.1	-0.4
<b>04.4 Water supply and misc. services for the dwelling</b>	11	142.2	148.4	5.8	4.4	5.8	5.8	5.8	5.8	5.8	5.8	5.8	5.8	4.4
04.4.1 Water supply	6	143.5	148.0	5.2	3.1	5.2	5.2	5.2	5.2	5.2	5.2	5.2	5.2	3.1
04.4.3 Sewerage collection	5	141.1	149.3	6.5	5.9	6.5	6.5	6.5	6.5	6.5	6.5	6.5	6.5	5.9
<b>04.5 Electricity, gas and other fuels</b>	48	194.3	208.8	-0.4	-0.2	10.2	0.4	-1.1	-0.5	4.6	4.5	6.7	7.3	7.5
04.5.1 Electricity	19	174.0	187.3	-	-	7.0	-0.5	-2.3	-1.1	3.9	3.9	6.4	7.6	7.6
04.5.2 Gas	26	219.0	237.3	-0.6	-	13.4	0.4	-1.0	-0.1	5.2	5.2	7.2	7.6	8.3
04.5.3 Liquid fuels	2	208.4	206.9	-1.2	-5.4	7.2	6.9	8.6	-0.1	4.6	2.3	6.8	3.7	-0.7
04.5.4 Solid fuels	1	177.7	176.4	-	-0.1	4.2	3.9	-0.6	-1.0	-0.6	-0.6	0.2	-0.7	-0.8
<b>05.1 Furniture, furnishings and carpets</b>	20	117.6	118.8	-2.4	-2.0	2.8	3.2	3.4	1.6	1.8	2.4	2.8	0.5	1.0
05.1.1 Furniture and furnishings	16	115.5	116.4	-4.0	-3.7	3.0	2.1	2.4	1.0	1.9	2.0	3.4	0.5	0.7
05.1.2 Carpets and other floor coverings	4	124.2	126.7	4.1	5.6	1.9	7.3	7.3	3.5	1.5	4.2	0.2	0.5	2.0
<b>05.2 Household textiles</b>	8	98.6	98.7	-1.5	-2.3	1.0	-0.3	-	-1.7	0.8	-0.2	-0.9	0.8	-
<b>05.3 Household appliances, fitting and repairs</b>	9	110.4	108.6	-	-1.1	0.4	0.3	-2.3	-1.4	-0.3	-0.5	-1.1	-0.5	-1.6
05.3.1/2 Major appliances and small electric goods	8	109.6	108.1	-0.1	-1.3	0.4	0.3	-2.3	-1.3	-0.1	-0.1	-0.8	-0.2	-1.4
05.3.3 Repair of household appliances	1	116.1	112.0	-	-	0.3	0.2	-2.1	-2.1	-2.0	-3.5	-3.6	-3.5	-3.5
<b>05.4 Glassware, tableware and household utensils</b>	5	114.4	116.6	-2.6	-0.3	4.1	1.2	2.6	-0.3	-0.3	0.5	0.4	-0.4	1.9
<b>05.5 Tools and equipment for house and garden</b>	4	132.2	128.2	0.6	-0.5	4.6	1.4	2.1	1.3	-0.9	-2.0	-3.4	-1.9	-3.0
<b>05.6 Goods and services for routine maintenance</b>	13	129.3	130.0	-0.1	-0.2	0.8	0.7	1.3	0.8	1.0	1.2	1.4	0.6	0.5
05.6.1 Non-durable household goods	5	133.0	131.6	-0.4	-0.6	-0.8	-0.7	0.4	-0.2	0.7	0.5	1.4	-0.8	-1.0
05.6.2 Domestic services and household services	8	122.7	124.5	-	-	1.7	1.9	1.4	1.3	1.2	1.6	1.4	1.5	1.5
<b>06.1 Medical products, appliances and equipment</b>	10	106.5	106.5	-	-	0.8	0.5	0.3	0.1	0.6	-0.2	-0.4	0.1	-
06.1.1 Pharmaceutical products	6	109.1	110.1	0.6	-0.5	0.5	0.5	0.8	0.9	1.7	0.9	0.8	2.0	0.9
06.1.2/3 Other medical and therapeutic equipment	4	103.5	102.1	-0.8	0.7	0.8	0.2	-0.5	-1.0	-0.9	-1.9	-2.2	-2.8	-1.3

Key:- zero or negligible .. not available (nec) not elsewhere covered

# 3 CPI: Detailed figures by divisions, groups and classes

continued

	Weights Index (2005=100)			Percentage change over 1 month				Percentage change over 12 months						
	2013	2012	2013	2012	2013	2012	2012	2012	2012	2012	2013	2013	2013	2013
		Apr	Apr	Apr	Apr	Apr	Aug	Sep	Oct	Nov	Dec	Jan	Feb	Mar
<b>06.2 Out-patient services</b>	6	120.8	123.7	0.8	0.9	1.7	1.7	1.7	1.8	2.2	2.2	2.0	2.3	2.4
06.2.1/3 Medical services & paramedical services	3	116.0	118.1	0.2	0.1	1.1	1.0	1.1	1.3	1.8	1.8	1.6	1.9	1.8
06.2.2 Dental services	3	126.5	130.1	1.7	1.6	2.7	2.7	2.5	2.6	2.7	2.8	2.7	2.9	2.8
<b>06.3 Hospital services</b>	9	148.1	155.9	2.4	2.8	5.1	5.1	5.5	5.5	5.5	5.0	5.0	4.9	5.3
<b>07.1 Purchase of vehicles</b>	38	103.3	102.3	-0.2	-0.3	-0.5	-0.8	0.5	0.4	0.6	-0.2	-0.7	-1.0	-1.0
07.1.1A New cars	21	112.1	112.3	-0.6	0.1	1.0	1.0	0.9	0.8	1.1	0.1	-	-0.5	0.2
07.1.1B Second-hand cars	14	89.0	86.3	0.3	-0.4	-2.8	-2.8	0.2	0.1	0.3	-0.5	-2.5	-2.4	-3.1
07.1.2/3 Motorcycles and bicycles	3	116.6	117.6	-0.5	-2.4	-1.2	-4.4	-1.3	-1.5	-1.5	-1.1	2.9	2.8	0.8
<b>07.2 Operation of personal transport equipment</b>	81	146.9	145.1	1.3	-0.7	0.3	1.9	1.8	1.1	0.6	0.5	1.2	0.8	-1.2
07.2.1 Spare parts and accessories	5	118.9	120.4	0.6	0.7	0.9	1.2	1.2	1.3	0.6	0.4	0.2	1.1	1.3
07.2.2 Fuels and lubricants	40	163.3	157.2	2.0	-1.8	-0.1	2.8	2.4	1.0	-0.2	-0.8	0.8	0.1	-3.7
07.2.3 Maintenance and repairs	22	133.6	136.0	0.3	0.1	1.3	1.4	1.4	1.2	1.7	2.3	2.3	2.1	1.8
07.2.4 Other services	14	123.6	125.3	0.8	1.1	0.3	0.4	1.0	1.4	1.4	1.4	1.1	1.2	1.4
<b>07.3 Transport services</b>	29	158.4	165.0	2.9	-1.0	8.3	7.1	8.1	7.6	2.9	5.7	7.6	8.3	4.2
07.3.1 Passenger transport by railway	9	147.1	152.2	0.8	0.1	5.4	5.0	5.0	6.3	5.2	3.8	3.0	4.2	3.5
07.3.2 Passenger transport by road	13	133.0	134.8	1.3	0.9	4.1	4.0	3.9	3.4	2.0	1.9	2.1	1.8	1.4
07.3.3 Passenger transport by air	6	135.1	136.1	7.4	-6.4	11.4	5.7	8.6	7.7	-6.8	3.4	14.6	15.7	0.8
07.3.4 Passenger transport by sea and inland waterway	1	148.2	158.7	4.2	3.1	9.8	5.1	3.4	-1.2	22.0	9.8	-1.0	8.2	7.1
<b>08.1 Postal services</b>	2	164.6	215.9	-	6.3	23.3	23.3	23.3	23.3	23.3	23.3	23.3	23.3	31.1
<b>08.2/3 Telephone and telefax equipment and services</b>	29	105.3	107.4	0.5	-0.2	3.7	2.7	3.0	3.0	1.4	2.8	3.3	2.6	2.0
<b>09.1 Audio-visual equipment and related products</b>	23	49.2	46.6	0.4	-1.2	-8.0	-5.0	-5.7	-6.9	-7.0	-7.8	-5.9	-3.8	-5.4
09.1.1 Reception and reproduction of sound and pictures	6	48.2	45.9	-0.6	-0.9	-6.5	-5.4	-7.6	-4.2	-5.5	-6.1	-5.2	-4.5	-4.8
09.1.2 Photographic, cinematographic and optical equipment	3	16.7	13.9	-0.8	-1.3	-33.5	-26.4	-23.9	-25.4	-23.6	-30.0	-22.5	-15.9	-16.4
09.1.3 Data processing equipment	7	35.7	32.5	-2.5	-0.5	-8.1	-5.2	-4.7	-5.5	-4.6	-9.1	-10.7	-10.9	-9.0
09.1.4 Recording media	6	83.5	85.9	5.1	-2.4	5.6	6.7	4.2	-1.1	-1.8	4.8	7.5	10.9	3.0
09.1.5 Repair of audio-visual equipment & related products	1	118.3	119.8	0.1	0.2	0.7	0.8	1.2	1.4	1.1	1.9	1.4	1.2	1.3
<b>09.2 Oth. major durables for recreation &amp; culture</b>	9	119.6	120.8	0.4	0.3	3.5	3.5	3.1	2.2	2.1	1.9	1.0	1.1	1.0
09.2.1/2 Major durables for in/outdoor recreation	9	119.6	120.8	0.4	0.3	3.5	3.5	3.1	2.2	2.1	1.9	1.0	1.1	1.0
<b>09.3 Other recreational items, gardens and pets</b>	32	99.1	99.4	-0.3	-1.0	1.4	0.5	-0.5	0.5	-0.5	-0.8	1.1	1.0	0.3
09.3.1 Games, toys and hobbies	19	86.7	87.4	-1.2	-1.1	2.6	0.9	-1.6	-1.4	-1.8	-2.0	0.5	0.8	0.8
09.3.2 Equipment for sport and open-air recreation	3	99.6	98.4	0.6	0.7	-3.1	-2.2	-0.9	-1.9	-0.7	-1.9	-0.1	-1.3	-1.2
09.3.3 Gardens, plants and flowers	4	117.0	111.5	3.2	-2.2	1.4	1.0	3.3	10.1	0.2	0.7	0.7	0.6	-4.7
09.3.4/5 Pets, related products and services	6	131.2	134.1	-	-0.3	0.6	0.4	0.3	1.2	2.1	1.6	2.6	2.5	2.2
<b>09.4 Recreational and cultural services</b>	29	130.1	135.0	1.0	2.1	2.9	3.3	3.2	3.4	2.8	2.9	2.9	2.6	3.8
09.4.1 Recreational and sporting services	9	132.1	138.0	0.9	2.5	3.4	3.4	3.2	3.4	3.4	2.8	2.9	2.9	4.5
09.4.2 Cultural services	20	129.1	133.6	1.0	2.0	2.8	3.2	3.2	3.4	2.5	2.9	2.9	2.5	3.5
<b>09.5 Books, newspapers and stationery</b>	14	122.9	128.7	0.5	-0.7	1.5	1.8	1.9	2.8	3.4	4.3	3.4	6.0	4.8
09.5.1 Books	4	116.2	117.5	2.7	-3.7	-5.5	-3.1	-1.5	-1.3	2.5	4.6	-0.4	7.8	1.1
09.5.2 Newspapers and periodicals	5	130.9	141.5	-	0.8	7.7	6.5	4.7	5.8	3.7	6.1	6.9	7.3	8.1
09.5.3/4 Misc. printed matter, stationery, drawing materials	5	117.6	121.9	-0.5	0.3	0.9	1.1	2.0	2.6	3.5	2.6	2.4	2.8	3.7
<b>09.6 Package holidays</b>	34	121.5	127.6	0.7	0.2	3.7	4.4	4.7	5.0	5.2	5.2	5.2	5.4	5.0
<b>10.0 Education</b>	21	168.3	201.5	-	-	5.1	3.2	19.7	19.7	19.7	19.7	19.7	19.7	19.7
<b>11.1 Catering services</b>	98	126.8	130.3	0.7	0.6	3.1	3.0	2.9	3.0	2.9	2.8	2.9	2.9	2.8
11.1.1 Restaurants & cafes	88	127.2	130.7	0.8	0.7	3.2	3.1	2.9	3.0	3.0	2.9	2.9	2.8	2.7
11.1.2 Canteens	10	122.8	126.8	0.2	0.3	2.1	2.3	2.5	2.3	2.6	2.2	3.0	3.2	3.3
<b>11.2 Accommodation services</b>	19	117.3	118.9	2.4	-0.5	3.0	2.6	3.0	5.0	4.9	5.6	4.5	4.3	1.4
<b>12.1 Personal care</b>	28	116.9	116.8	0.3	0.5	0.2	1.2	0.4	1.7	1.8	0.5	-	-0.2	-0.1
12.1.1 Hairdressing and personal grooming establishments	7	121.6	123.2	0.2	0.2	1.3	1.5	1.1	1.4	1.4	1.2	1.3	1.3	1.3
12.1.2/3 Appliances and products for personal care	21	115.2	114.6	0.4	0.5	-0.3	1.1	0.2	1.9	1.9	0.2	-0.5	-0.7	-0.5
<b>12.3 Personal effects (nec)</b>	13	130.7	135.9	-0.7	-0.1	4.7	4.5	4.3	5.2	5.0	5.8	3.5	3.4	4.0
12.3.1 Jewellery, clocks and watches	8	145.4	152.2	-0.4	-0.4	7.1	7.2	6.2	6.5	6.5	6.7	4.7	4.6	4.7
12.3.2 Other personal effects	5	102.8	105.8	-1.0	0.4	0.6	-0.2	1.1	3.0	2.7	4.3	1.6	1.5	2.9
<b>12.4 Social protection</b>	14	132.6	135.4	0.4	0.2	2.5	2.6	2.6	2.5	2.6	2.6	2.5	2.4	2.1
<b>12.5 Insurance</b>	8	162.6	161.8	0.9	0.3	1.1	1.8	0.5	-1.2	-3.1	-1.9	-2.6	0.2	-0.5
12.5.2 House contents insurance	2	110.4	105.4	0.2	-0.6	-1.9	-0.7	-0.7	-1.2	-0.6	-1.8	-4.4	-3.8	-4.5
12.5.3 Health insurance	2	162.2	174.8	4.0	3.6	6.8	6.8	7.9	7.9	7.9	8.2	8.2	8.2	7.8
12.5.4 Transport insurance	4	192.7	184.6	-0.3	-0.9	-2.8	-2.6	-6.4	-9.7	-12.5	-8.6	-8.3	-3.6	-4.2
<b>12.6 Financial services (nec)</b>	30	97.2	97.3	0.1	-0.1	0.4	1.8	1.8	2.0	1.9	-0.2	-0.2	0.3	0.1
12.6.2 Other financial services (nec)	30	97.2	97.3	0.1	-0.1	0.4	1.8	1.8	2.0	1.9	-0.2	-0.2	0.3	0.1
<b>12.7 Other services (nec)</b>	10	126.5	131.2	-0.1	0.1	3.0	2.9	2.4	2.5	2.7	3.4	3.6	3.5	3.8

Key:- zero or negligible .. not available (nec) not elsewhere covered

Source: Office for National Statistics



# 4 CPIH: Detailed figures by divisions, groups and classes

	Weights	Index (2005=100)			Percentage change over 1 month					Percentage change over 12 months				
		2013	2012	2013	2012	2013	2012	2012	2012	2012	2012	2013	2013	2013
			Apr	Apr	Apr	Apr	Apr	Aug	Sep	Oct	Nov	Dec	Jan	Feb
<b>CPIH (overall index)</b>	1 000	121.1	123.8	0.5	0.2	2.4	2.1	2.5	2.5	2.5	2.5	2.6	2.6	2.2
01 Food and non-alcoholic beverages	95	137.7	144.0	-0.2	0.7	2.2	2.0	3.3	3.9	3.8	4.2	3.7	3.7	4.6
02 Alcoholic beverages and tobacco	38	141.2	148.9	2.8	2.3	5.9	6.1	6.5	5.6	5.9	8.2	6.7	6.0	5.5
03 Clothing and footwear	60	82.5	82.0	0.2	-0.0	-0.7	-0.5	-0.1	-0.6	0.8	0.2	-0.6	-0.4	-0.6
04 Housing, water, electricity, gas and other fuels	244	124.0	127.3	0.5	0.3	3.5	1.7	1.4	1.6	2.5	2.4	2.8	2.9	2.7
05 Furniture, household equipment and maintenance	52	118.2	118.4	-1.3	-1.3	2.4	1.8	1.7	0.7	0.8	0.8	0.8	0.2	0.2
06 Health	23	122.9	125.8	1.0	1.1	2.5	2.4	2.5	2.4	2.7	2.2	2.1	2.3	2.4
07 Transport	128	136.1	135.9	1.2	-0.6	1.9	2.6	3.1	2.7	1.1	1.3	1.9	1.7	-0.1
08 Communication	26	107.6	111.0	0.4	0.1	4.5	3.5	3.9	3.8	2.3	3.7	4.1	3.5	3.1
09 Recreation and culture	123	100.8	102.3	0.5	0.0	0.7	1.3	0.9	1.2	0.8	0.8	1.3	1.9	1.5
10 Education	18	168.3	201.5	0.0	0.0	5.1	3.2	19.7	19.7	19.7	19.7	19.7	19.7	19.7
11 Restaurants and hotels	103	125.5	128.7	1.0	0.5	3.1	3.0	2.9	3.3	3.2	3.2	3.1	3.1	2.5
12 Miscellaneous goods and services	90	118.8	120.1	0.2	0.1	1.6	2.3	1.9	2.3	2.0	1.4	0.9	1.1	1.1
<b>04.2 Owner occupiers housing costs</b>	122	106.2	107.3	0.1	0.1	1.1	1.1	1.0	1.0	1.0	1.0	1.0	1.0	1.0
<b>All goods</b>	469	119.1	121.1	0.3	-0.1	1.9	1.4	1.6	1.5	2.0	1.9	2.0	2.0	1.6
<b>All services</b>	531	123.0	126.4	0.8	0.4	2.8	2.8	3.4	3.5	3.0	3.1	3.2	3.2	2.8
<b>CPIH excluding Energy, food, alcoholic beverages &amp; tobacco</b>	789	114.3	116.4	0.5	0.1	2.0	2.0	2.4	2.4	2.2	2.1	2.1	2.2	1.8
<b>01.1 Food</b>	84	137.5	144.5	-0.3	0.9	2.0	1.8	3.2	3.8	4.0	4.4	4.1	3.8	5.1
01.1.1 Bread and cereals	14	136.9	143.1	-0.6	0.3	1.5	1.1	1.3	3.9	3.2	4.1	3.0	3.6	4.6
01.1.2 Meat	19	134.3	138.7	-0.5	0.5	1.6	2.3	3.3	2.6	4.0	3.2	4.1	2.4	3.3
01.1.3 Fish	3	153.7	154.0	0.4	-0.7	4.1	1.9	2.6	0.8	3.6	3.3	1.6	1.3	0.2
01.1.4 Milk, cheese and eggs	12	134.9	135.5	0.0	0.3	-1.5	-0.5	0.4	0.1	0.6	0.7	-0.5	0.2	0.5
01.1.5 Oils and fats	2	159.5	167.4	0.2	3.8	-2.4	-3.8	-1.1	-1.3	0.2	-0.7	3.4	1.4	5.0
01.1.6 Fruit	8	126.8	142.3	-0.9	0.3	4.0	0.7	3.8	3.9	4.5	7.2	11.9	10.8	12.2
01.1.7 Vegetables including potatoes and tubers	13	138.6	152.2	-1.9	1.0	1.7	2.8	5.5	8.1	6.4	8.4	7.0	6.7	9.9
01.1.8 Sugar, jam, syrups, chocolate and confectionery	10	146.4	154.2	2.8	3.9	4.7	3.4	5.5	6.8	6.5	6.6	3.0	4.1	5.3
01.1.9 Food products (nec)	3	122.7	126.8	-1.9	-0.5	4.3	3.9	3.2	3.9	3.2	3.1	2.7	1.9	3.4
<b>01.2 Non-alcoholic beverages</b>	11	139.5	141.2	1.0	-0.6	3.3	3.0	4.0	4.1	2.2	2.6	0.7	2.8	1.2
01.2.1 Coffee, tea and cocoa	3	151.4	152.9	3.3	-0.1	0.5	-0.6	0.3	1.9	-0.2	0.6	2.4	4.4	1.0
01.2.2 Mineral waters, soft drinks and juices	8	135.3	137.1	0.3	-0.8	4.2	4.2	5.2	4.8	3.0	3.2	0.1	2.4	1.3
<b>02.1 Alcoholic beverages</b>	17	124.1	127.1	-0.0	1.3	2.7	2.5	3.3	1.4	1.4	6.3	2.8	1.2	2.4
02.1.1 Spirits	5	131.1	135.1	0.5	2.2	6.8	4.6	5.3	3.2	2.9	9.5	4.3	1.3	3.1
02.1.2 Wine	8	123.7	128.2	0.4	2.6	0.1	0.9	2.6	1.0	0.6	4.0	1.2	1.4	3.6
02.1.3 Beer	4	115.1	114.1	-1.4	-2.6	2.9	3.0	2.1	-0.3	1.3	7.1	4.2	0.3	-0.8
<b>02.2 Tobacco</b>	21	154.9	166.4	5.1	3.2	8.3	8.8	8.9	8.8	9.3	9.3	9.4	9.5	7.4
<b>03.1 Clothing</b>	52	82.1	81.7	0.1	0.0	-0.7	-0.5	-0.3	-0.6	1.0	0.3	-0.6	-0.3	-0.4
03.1.2 Garments	48	80.5	80.1	0.1	0.0	-1.0	-0.7	-0.4	-0.8	1.0	0.4	-0.7	-0.4	-0.5
03.1.3 Other clothing and clothing accessories	3	98.6	99.4	-0.4	0.1	2.7	1.8	1.5	0.8	1.6	-1.3	-0.7	0.3	0.8
03.1.4 Cleaning, repair and hire of clothing	1	124.0	125.9	-0.0	0.2	1.6	1.4	1.5	1.5	1.3	1.3	1.2	1.3	1.5
<b>03.2 Footwear including repairs</b>	8	85.0	83.1	1.1	-0.5	-0.8	-0.5	1.1	-0.6	-0.8	-0.5	-0.4	-0.6	-2.2
<b>04.1 Actual rentals for housing</b>	55	119.9	122.9	1.5	0.8	3.4	3.3	3.6	3.7	3.7	3.2	3.2	3.2	2.6
<b>04.2 Owner occupiers housing costs</b>	122	106.2	107.3	0.1	0.1	1.1	1.1	1.0	1.0	1.0	1.0	1.0	1.0	1.0
<b>04.3 Regular maintenance and repair of the dwelling</b>	14	132.1	131.1	0.0	-0.1	1.8	1.9	1.5	1.5	0.5	-0.2	-0.3	-0.7	-0.7
04.3.1 Materials for maintenance and repair	8	143.5	142.0	-0.0	0.1	3.2	3.3	2.7	2.8	1.0	-0.2	-0.4	-1.1	-1.0
04.3.2 Services for maintenance and repair	6	118.3	117.8	0.1	-0.3	-0.3	-0.3	-0.3	-0.3	-0.3	-0.3	-0.3	-0.1	-0.4
<b>04.4 Water supply and misc. services for the dwelling</b>	10	142.0	148.4	5.8	4.5	5.8	5.8	5.8	5.8	5.8	5.8	5.8	5.8	4.5
04.4.1 Water supply	5	143.5	148.0	5.2	3.1	5.2	5.2	5.2	5.2	5.2	5.2	5.2	5.2	3.1
04.4.3 Sewerage collection	5	141.1	149.3	6.5	5.9	6.5	6.5	6.5	6.5	6.5	6.5	6.5	6.5	5.9
<b>04.5 Electricity, gas and other fuels</b>	43	191.4	205.7	-0.4	-0.3	10.3	0.4	-1.1	-0.5	4.6	4.4	6.8	7.3	7.5
04.5.1 Electricity	17	174.0	187.3	0.0	0.0	7.0	-0.5	-2.3	-1.1	3.9	3.9	6.4	7.6	7.6
04.5.2 Gas	23	219.0	237.3	-0.6	0.0	13.4	0.4	-1.0	-0.1	5.2	5.2	7.2	7.6	8.3
04.5.3 Liquid fuels	2	208.4	206.9	-1.2	-5.4	7.2	6.9	8.6	-0.1	4.6	2.3	6.8	3.7	-0.7
04.5.4 Solid fuels	1	177.7	176.4	0.0	-0.1	4.2	3.9	-0.6	-1.0	-0.6	-0.6	0.2	-0.7	-0.8
<b>05.1 Furniture, furnishings and carpets</b>	17	117.5	118.6	-2.6	-2.2	2.8	3.4	3.4	1.9	1.8	2.4	2.9	0.5	1.0
05.1.1 Furniture and furnishings	14	115.5	116.4	-4.0	-3.7	3.0	2.1	2.4	1.0	1.9	2.0	3.4	0.5	0.7
05.1.2 Carpets and other floor coverings	3	124.2	126.7	4.1	5.6	1.9	7.3	7.3	3.5	1.5	4.2	0.2	0.5	2.0
<b>05.2 Household textiles</b>	7	98.6	98.7	-1.5	-2.3	1.0	-0.3	-0.0	-1.7	0.8	-0.2	-0.9	0.8	0.0
<b>05.3 Household appliances, fitting and repairs</b>	8	110.5	108.7	-0.0	-1.1	0.4	0.3	-2.3	-1.4	-0.3	-0.5	-1.1	-0.6	-1.7
05.3.1/2 Major appliances and small electric goods	7	109.6	108.1	-0.1	-1.3	0.4	0.3	-2.3	-1.3	-0.1	-0.1	-0.8	-0.2	-1.4
05.3.3 Repair of household appliances	1	116.1	112.0	0.0	0.0	0.3	0.2	-2.1	-2.1	-2.0	-3.5	-3.6	-3.5	-3.5
<b>05.4 Glassware, tableware and household utensils</b>	5	114.4	116.6	-2.6	-0.3	4.1	1.2	2.6	-0.3	-0.3	0.5	0.4	-0.4	1.9
<b>05.5 Tools and equipment for house and garden</b>	4	132.2	128.2	0.6	-0.5	4.6	1.4	2.1	1.3	-0.9	-2.0	-3.4	-1.9	-3.0
<b>05.6 Goods and services for routine maintenance</b>	11	129.2	130.0	-0.1	-0.2	0.9	0.7	1.3	0.8	1.0	1.2	1.4	0.6	0.6
05.6.1 Non-durable household goods	4	133.0	131.6	-0.4	-0.6	-0.8	-0.7	0.4	-0.2	0.7	0.5	1.4	-0.8	-1.0
05.6.2 Domestic services and household services	7	122.7	124.5	0.0	0.0	1.7	1.9	1.4	1.3	1.2	1.6	1.4	1.5	1.5
<b>06.1 Medical products, appliances and equipment</b>	10	106.4	106.4	-0.0	-0.0	0.7	0.4	0.2	0.0	0.5	-0.3	-0.5	-0.0	-0.0
06.1.1 Pharmaceutical products	6	109.1	110.1	0.6	-0.5	0.5	0.5	0.8	0.9	1.7	0.9	0.8	2.0	0.9
06.1.2/3 Other medical and therapeutic equipment	4	103.5	102.1	-0.8	0.7	0.8	0.2	-0.5	-1.0	-0.9	-1.9	-2.2	-2.8	-1.3

# 4 CPIH: Detailed figures by divisions, groups and classes

continued

	Weights Index (2005=100)			Percentage change over 1 month				Percentage change over 12 months							
	2013	2012	2013	2012	2013	2012	2012	2012	2012	2012	2013	2013	2013	2013	
		Apr	Apr	Apr	Apr	Aug	Sep	Oct	Nov	Dec	Jan	Feb	Mar	Apr	
<b>06.2 Out-patient services</b>	5	121.0	123.7	1.2	0.1	1.7	1.7	1.7	1.8	2.2	2.2	2.0	2.3	2.2	
06.2.1/3 Medical services & paramedical services	3	116.0	118.1	0.2	0.1	1.1	1.0	1.1	1.3	1.8	1.8	1.6	1.9	1.8	
06.2.2 Dental services	2	126.5	130.1	1.7	1.6	2.7	2.7	2.5	2.6	2.7	2.8	2.7	2.9	2.8	
<b>06.3 Hospital services</b>	8	148.1	155.9	2.4	2.8	5.1	5.1	5.5	5.5	5.5	5.0	5.0	4.9	5.3	
<b>07.1 Purchase of vehicles</b>	32	103.5	102.4	-0.2	-0.2	-0.5	-0.8	0.5	0.5	0.7	-0.2	-0.7	-1.0	-1.0	
07.1.1A New cars	18	112.1	112.3	-0.6	0.1	1.0	1.0	0.9	0.8	1.1	0.1	-0.0	-0.5	0.2	
07.1.1B Second-hand cars	12	89.0	86.3	0.3	-0.4	-2.8	-2.8	0.2	0.1	0.3	-0.5	-2.5	-2.4	-3.1	
07.1.2/3 Motorcycles and bicycles	2	116.6	117.6	-0.5	-2.4	-1.2	-4.4	-1.3	-1.5	-1.5	-1.1	2.9	2.8	0.8	
<b>07.2 Operation of personal transport equipment</b>	71	147.4	145.5	1.3	-0.7	0.4	1.9	1.8	1.1	0.6	0.5	1.1	0.7	-1.3	
07.2.1 Spare parts and accessories	4	118.9	120.4	0.6	0.7	0.9	1.2	1.2	1.3	0.6	0.4	0.2	1.1	1.3	
07.2.2 Fuels and lubricants	35	163.3	157.2	2.0	-1.8	-0.1	2.8	2.4	1.0	-0.2	-0.8	0.8	0.1	-3.7	
07.2.3 Maintenance and repairs	20	133.6	136.0	0.3	0.1	1.3	1.4	1.4	1.2	1.7	2.3	2.3	2.1	1.8	
07.2.4 Other services	12	123.6	125.3	0.8	1.1	0.3	0.4	1.0	1.4	1.4	1.4	1.1	1.2	1.4	
<b>07.3 Transport services</b>	25	158.4	165.8	3.0	-0.9	9.4	7.2	8.0	7.5	2.9	6.3	8.2	8.8	4.6	
07.3.1 Passenger transport by railway	8	147.1	152.2	0.8	0.1	5.4	5.0	5.0	6.3	5.2	3.8	3.0	4.2	3.5	
07.3.2 Passenger transport by road	11	133.0	134.8	1.3	0.9	4.1	4.0	3.9	3.4	2.0	1.9	2.1	1.8	1.4	
07.3.3 Passenger transport by air	5	135.1	136.1	7.4	-6.4	11.4	5.7	8.6	7.7	-6.8	3.4	14.6	15.7	0.8	
07.3.4 Passenger transport by sea and inland waterway	1	148.2	158.7	4.2	3.1	9.8	5.1	3.4	-1.2	22.0	9.8	-1.0	8.2	7.1	
<b>08.1 Postal services</b>	1	164.6	215.9	0.0	6.3	23.3	23.3	23.3	23.3	23.3	23.3	23.3	23.3	31.1	
<b>08.2/3 Telephone and telefax equipment and services</b>	25	105.3	107.4	0.5	-0.2	3.7	2.7	3.0	3.0	1.4	2.8	3.3	2.6	2.0	
<b>09.1 Audio-visual equipment and related products</b>	19	49.9	47.4	0.5	-1.2	-7.2	-4.3	-4.9	-6.2	-6.3	-6.9	-5.3	-3.4	-5.1	
09.1.1 Reception and reproduction of sound and pictures	5	48.2	45.9	-0.6	-0.9	-6.5	-5.4	-7.6	-4.2	-5.5	-6.1	-5.2	-4.5	-4.8	
09.1.2 Photographic, cinematographic and optical equipment	2	16.7	13.9	-0.8	-1.3	-33.5	-26.4	-23.9	-25.4	-23.6	-30.0	-22.5	-15.9	-16.4	
09.1.3 Data processing equipment	6	35.7	32.5	-2.5	-0.5	-8.1	-5.2	-4.7	-5.5	-4.6	-9.1	-10.7	-10.9	-9.0	
09.1.4 Recording media	5	83.5	85.9	5.1	-2.4	5.6	6.7	4.2	-1.1	-1.8	4.8	7.5	10.9	3.0	
09.1.5 Repair of audio-visual equipment & related products	1	118.3	119.8	0.1	0.2	0.7	0.8	1.2	1.4	1.1	1.9	1.4	1.2	1.3	
<b>09.2 Oth. major durables for recreation &amp; culture</b>	8	119.6	120.8	0.4	0.3	3.5	3.5	3.1	2.2	2.1	1.9	1.0	1.1	1.0	
09.2.1/2 Major durables for in/outdoor recreation	8	119.6	120.8	0.4	0.3	3.5	3.5	3.1	2.2	2.1	1.9	1.0	1.1	1.0	
<b>09.3 Other recreational items, gardens and pets</b>	29	99.2	99.4	-0.2	-1.0	1.3	0.5	-0.5	0.7	-0.5	-0.7	1.1	1.1	0.3	
09.3.1 Games, toys and hobbies	17	86.7	87.4	-1.2	-1.1	2.6	0.9	-1.6	-1.4	-1.8	-2.0	0.5	0.8	0.8	
09.3.2 Equipment for sport and open-air recreation	3	99.6	98.4	0.6	0.7	-3.1	-2.2	-0.9	-1.9	-0.7	-1.9	-0.1	-1.3	-1.2	
09.3.3 Gardens, plants and flowers	4	117.0	111.5	3.2	-2.2	1.4	1.0	3.3	10.1	0.2	0.7	0.7	0.6	-4.7	
09.3.4/5 Pets, related products and services	5	131.2	134.1	-0.0	-0.3	0.6	0.4	0.3	1.2	2.1	1.6	2.6	2.5	2.2	
<b>09.4 Recreational and cultural services</b>	25	130.1	135.0	1.0	2.1	2.9	3.2	3.2	3.4	2.8	2.9	2.9	2.6	3.7	
09.4.1 Recreational and sporting services	8	132.1	138.0	0.9	2.5	3.4	3.4	3.2	3.4	3.4	2.8	2.9	2.9	4.5	
09.4.2 Cultural services	17	129.1	133.6	1.0	2.0	2.8	3.2	3.2	3.4	2.5	2.9	2.9	2.5	3.5	
<b>09.5 Books, newspapers and stationery</b>	12	122.4	128.4	0.5	-0.6	1.5	1.8	1.9	2.8	3.4	4.5	3.5	5.9	4.8	
09.5.1 Books	3	116.2	117.5	2.7	-3.7	-5.5	-3.1	-1.5	-1.3	2.5	4.6	-0.4	7.8	1.1	
09.5.2 Newspapers and periodicals	5	130.9	141.5	0.0	0.8	7.7	6.5	4.7	5.8	3.7	6.1	6.9	7.3	8.1	
09.5.3/4 Misc. printed matter, stationery, drawing materials	4	117.6	121.9	-0.5	0.3	0.9	1.1	2.0	2.6	3.5	2.6	2.4	2.8	3.7	
<b>09.6 Package holidays</b>	30	121.5	127.6	0.7	0.2	3.7	4.4	4.7	5.0	5.2	5.2	5.2	5.4	5.0	
<b>10.0 Education</b>	18	168.3	201.5	0.0	0.0	5.1	3.2	19.7	19.7	19.7	19.7	19.7	19.7	19.7	
<b>11.1 Catering services</b>	86	126.8	130.3	0.7	0.6	3.1	3.0	2.9	3.0	2.9	2.8	2.9	2.9	2.8	
11.1.1 Restaurants & cafes	77	127.2	130.7	0.8	0.7	3.2	3.1	2.9	3.0	3.0	2.9	2.9	2.8	2.7	
11.1.2 Canteens	9	122.8	126.8	0.2	0.3	2.1	2.3	2.5	2.3	2.6	2.2	3.0	3.2	3.3	
<b>11.2 Accommodation services</b>	17	117.3	118.9	2.4	-0.5	3.0	2.6	3.0	5.0	4.9	5.6	4.5	4.3	1.4	
<b>12.1 Personal care</b>	24	116.9	116.8	0.3	0.5	0.2	1.2	0.5	1.7	1.8	0.5	-0.0	-0.2	-0.1	
12.1.1 Hairdressing and personal grooming establishments	6	121.6	123.2	0.2	0.2	1.3	1.5	1.1	1.4	1.4	1.2	1.3	1.3	1.3	
12.1.2/3 Appliances and products for personal care	18	115.2	114.6	0.4	0.5	-0.3	1.1	0.2	1.9	1.9	0.2	-0.5	-0.7	-0.5	
<b>12.3 Personal effects (nec)</b>	11	129.6	134.9	-0.6	-0.1	4.8	4.6	4.4	5.3	5.1	5.8	3.6	3.5	4.1	
12.3.1 Jewellery, clocks and watches	7	145.4	152.2	-0.4	-0.4	7.1	7.2	6.2	6.5	6.5	6.7	4.7	4.6	4.7	
12.3.2 Other personal effects	4	102.8	105.8	-1.0	0.4	0.6	-0.2	1.1	3.0	2.7	4.3	1.6	1.5	2.9	
<b>12.4 Social protection</b>	12	132.6	135.4	0.4	0.2	2.5	2.6	2.6	2.5	2.6	2.6	2.5	2.4	2.1	
<b>12.5 Insurance</b>	7	158.6	157.4	1.0	0.4	0.9	1.4	0.2	-1.5	-3.5	-1.9	-2.5	-0.2	-0.8	
12.5.2 House contents insurance	2	110.4	105.4	0.2	-0.6	-1.9	-0.7	-0.7	-1.2	-0.6	-1.8	-4.4	-3.8	-4.5	
12.5.3 Health insurance	2	162.2	174.8	4.0	3.6	6.8	6.8	7.9	7.9	7.9	8.2	8.2	8.2	7.8	
12.5.4 Transport insurance	3	192.7	184.6	-0.3	-0.9	-2.8	-2.6	-6.4	-9.7	-12.5	-8.6	-8.3	-3.6	-4.2	
<b>12.6 Financial services (nec)</b>	27	97.2	97.3	0.1	-0.1	0.4	1.8	1.8	2.0	1.9	-0.2	-0.2	0.3	0.1	
12.6.2 Other financial services (nec)	27	97.2	97.3	0.1	-0.1	0.4	1.8	1.8	2.0	1.9	-0.2	-0.2	0.3	0.1	
<b>12.7 Other services (nec)</b>	9	126.5	131.2	-0.1	0.1	3.0	2.9	2.4	2.5	2.7	3.4	3.6	3.5	3.8	

Key:- zero or negligible .. not available (nec) not elsewhere covered

Source: Office for National Statistics

1 ONS currently classifies CPIH as an experimental statistic. CPIH is currently being assessed for National Statistics status. This assessment is expected to be completed by the summer of 2013. For further details on experimental statistics see: <http://www.statisticsauthority.gov.uk/news/assessment-and-designation-of-experimental-statistics.html>