

Internet Access Quarterly Update, Q3 2012



Coverage: UK

Date: 14 November 2012

Geographical Area: Region

Theme: People and Places

Key points

- At Q3 2012, 7.63 million adults (15%) had never used the Internet. This is 2% lower than at Q2 2012 and 9% lower than at Q3 2011.
- There were 42.79 million adults (85%) who had ever used the Internet at Q3 2012.
- Men (87%) were more likely to be Internet users than women (83%).
- By region, London had the highest rate of Internet users (88%); Northern Ireland the lowest (77%).

Overview

This is the latest quarterly release about Internet use by adults aged 16 years and over. Internet use is linked to various socio-economic and demographic characteristics, such as age; sex; disability; geographical location and weekly earnings. For example, adults who are less likely to have used the Internet include the elderly and disabled.

The estimates in this release are derived from the Labour Force Survey (LFS) and are not seasonally adjusted. ONS developed these statistics to meet the needs of users. There is a particular interest and focus in the UK on those who have never used the Internet.

On 24 August 2012, ONS published a partial release of the annual [Internet Access – Households and Individuals 2012 statistical bulletin](#). A full publication has been delayed until February 2013 due to a data collection problem.

The estimates in the annual bulletin are more detailed, but are derived from the Opinions and Lifestyles Survey, which has a smaller sample size than the LFS. Therefore comparisons made between this quarterly release and the annual publication should be made with caution. The annual

survey provides more information on Internet use than this quarterly update. However, due to the larger sample size of the LFS, the estimates of levels from the quarterly survey on Internet use and non-use should be considered to be more accurate.

User engagement

We are constantly aiming to improve this release and its associated commentary. We would welcome any feedback you might have, and would be particularly interested in knowing how you make use of these data to inform your work. Please contact us via email: esociety@ons.gsi.gov.uk or telephone David Matthews on +44 (0)1633 456756.

Users and non-users

At Q3 2012, there were 42.79 million adults in the UK who had ever used the Internet, representing 85% of the adult population. The 7.63 million adults who had never used the Internet represented 15% of the adult population.

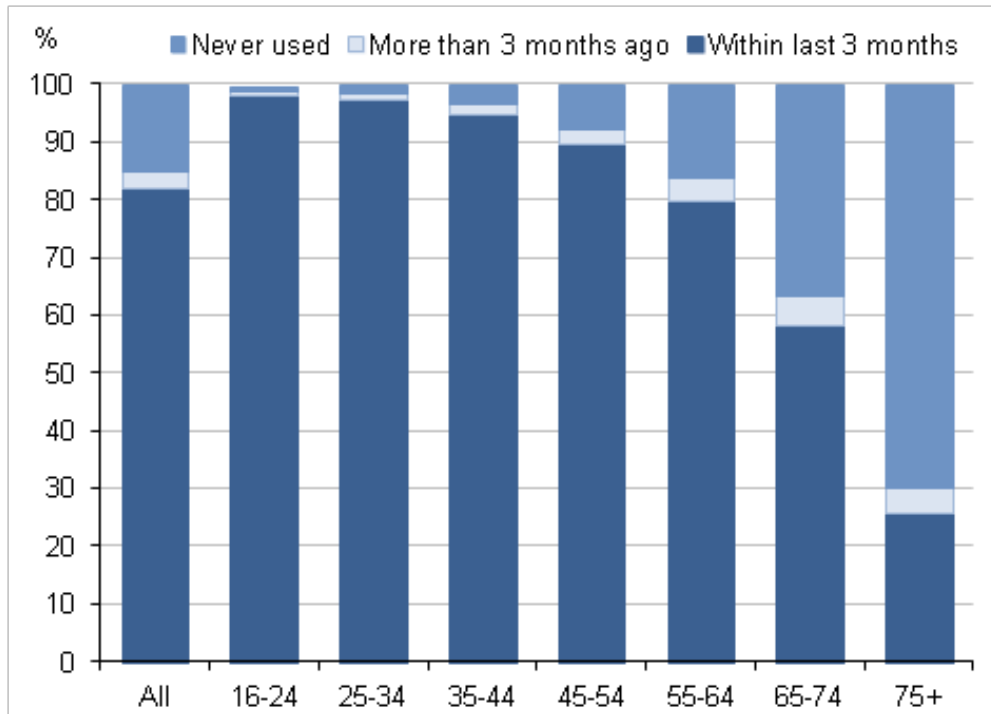
There was a decrease, since Q2 2012, of 193,000 adults (2%) who had never used the Internet and a decrease of 798,000 (9%) compared with a year earlier (Q3 2011).

Age (Tables 1A and 1B)

Age has a sizeable effect on whether an individual has ever used the Internet. Almost all adults aged 16 to 24 years (99%) had ever used the Internet (7.13 million people). In contrast, only 30% of adults aged 75 years and over had ever used the Internet, representing 1.41 million people.

The 3.24 million non-users aged 75 years and over made up 43% of the 7.63 million people who had never used the Internet at Q3 2012.

Figure 1: Internet users and non-users by age group (years), 2012 Q3



Notes:

1. Percentages sum to less than 100 due to "don't know" responses.

Download chart

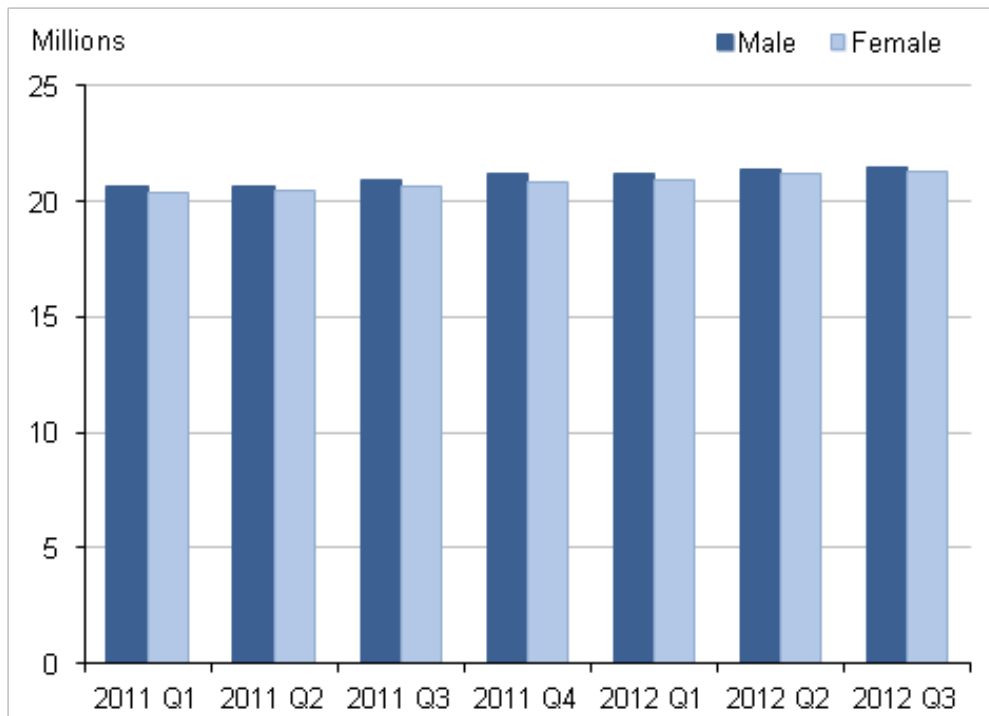
[XLS](#) [XLS format](#)
(33 Kb)

Sex (Tables 1A and 1B)

At Q3 2012, there were 21.48 million male and 21.32 million female Internet users. Men were more likely to have used the Internet than women, with 87% of men having ever used the Internet compared to 83% of women.

At Q3 2012, there were 1.30 million more women than men who had never used the Internet; 4.46 million women compared with 3.17 million men.

These trends have been similar since the first quarterly survey was undertaken at Q1 2011.

Figure 2: Internet users by sex**Notes:**

1. Persons aged 16 years and over.

Download chart

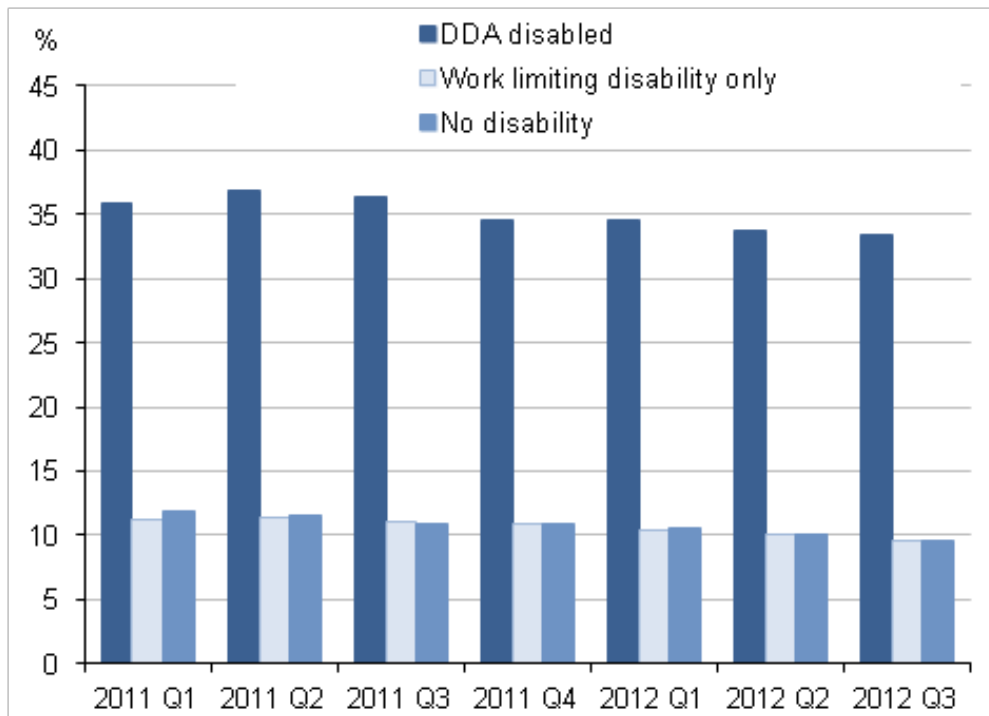
XLS [XLS format](#)

(19 Kb)

Disability (Tables 1A and 1B)

At Q3 2012, there were 3.89 million disabled adults, as defined by the Disability Discrimination Act (DDA), who had never used the Internet. This represents 33% of those who were disabled and just over half of the 7.63 million adults who had never used the Internet. Of those adults who reported no disability, 10% (3.61 million adults) had never used the Internet. This indicates that individuals with a disability are just over three times more likely never to have used the Internet than individuals with no disability.

Figure 3: Internet non-users by disability status



Notes:

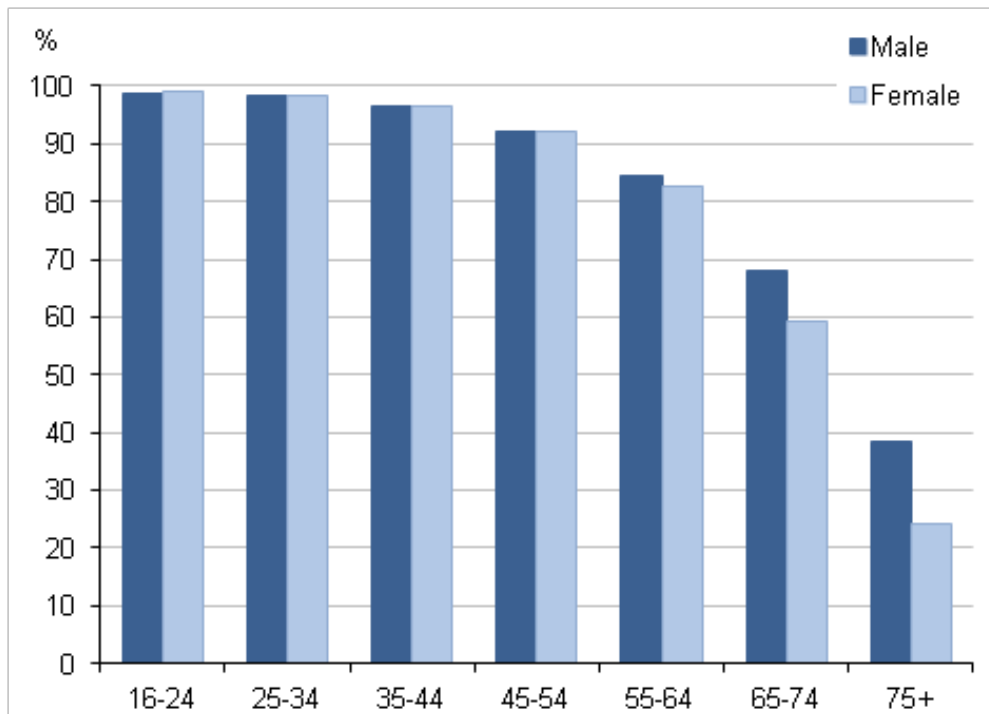
1. Persons aged 16 and over.
2. DDA disabled refers to those who self-assess that they have a disability in line with the Disability Discrimination Act (DDA) definition of disability.

Download chart

[XLS](#) [XLS format](#)
(32 Kb)

Age and Sex (Tables 2A and 2B)

Tables 2A and 2B present estimates of Internet users and non-users by age group and sex. The tables show that whereas Internet non-use was relatively similar for males and females aged 16 to 64 years, Internet non-use differed for adults aged 65 years and over. For example, whereas 32% of males aged 65 to 74 years had never used the Internet, the corresponding total for females was 41%, a difference of 9 percentage points. This difference grows to 14 percentage points for males and females aged 75 years and over.

Figure 4: Internet users by age group (years) and sex, 2012 Q3

Download chart

XLS [XLS format](#)

(31 Kb)

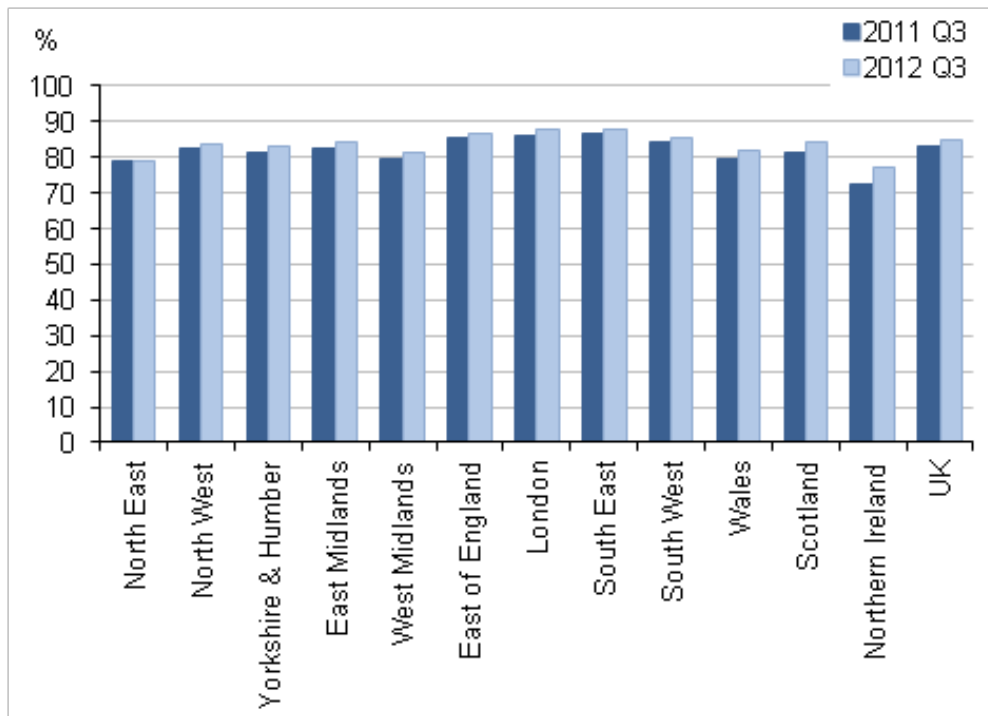
Regional distribution (Tables 3A to 4B)

London was the region with the highest rate of Internet use with 88% of adults reporting that they had used the Internet. Northern Ireland had the lowest proportion of Internet users, at 77%. The estimate for Northern Ireland is markedly lower than all other regions, but is an increase on the estimate of Internet use in Northern Ireland at Q3 2011 of 72%. All regions have shown an increase in Internet use over this period (Q3 2011 to Q3 2012).

Tables 4A and 4B are presented at a lower regional level of geography than in publications prior to Q2 2012. These data have been included due to user interest. They are based on smaller sample sizes than the higher level regional estimates in tables 3A and 3B and are therefore subject to a greater degree of sampling variability, so should be treated with caution (see background note 6).

A [mapping tool](#) is available for viewing the Q3 2012 results, by region and the UK as a whole. The mapping tool can be used to illustrate how, in each region, the number of people who have ever used the Internet has changed from Q3 2011, as well as enabling comparison with other regions.

Figure 5: Internet users by region



Notes:

1. Persons aged 16 and over.

Download chart

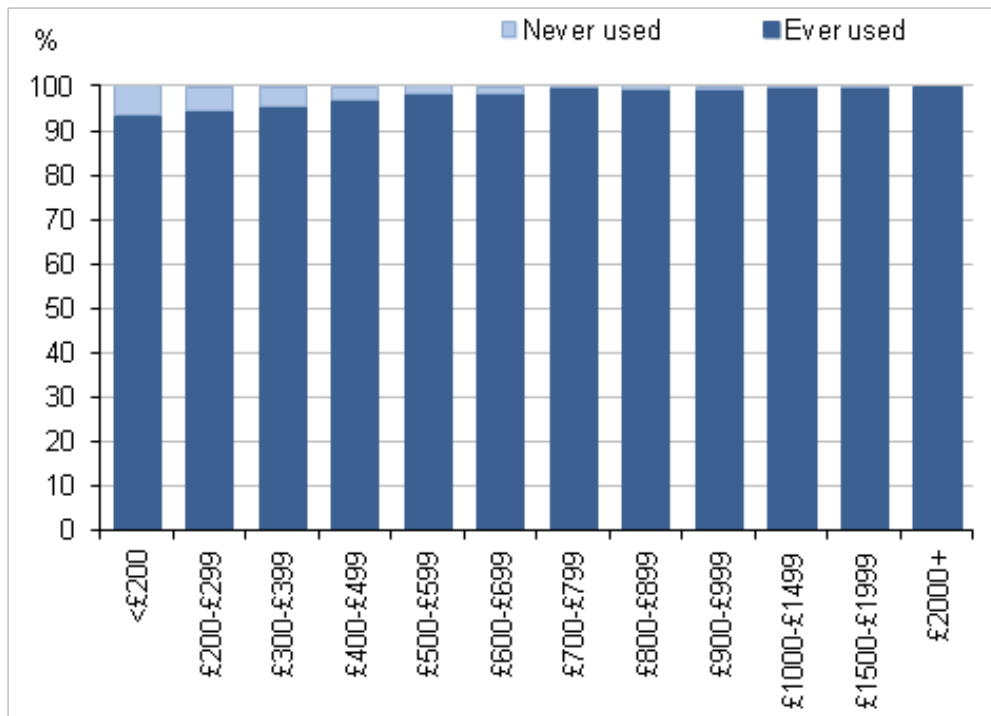
[XLS](#) [XLS format](#)

(31.5 Kb)

Earnings (Tables 5A and 5B)

Tables 5A and 5B present a breakdown of Internet users and non-users by gross weekly pay. Of those adults in employment whose gross weekly pay was less than £200 per week, 7% (358,000) had never used the Internet. Internet use has almost reached full coverage for those earning in excess of £500 a week, with Internet use above 98% for all adults with weekly pay rates above this level.

Figure 6: Internet users and non-users by gross weekly pay, 2012 Q3



Notes:

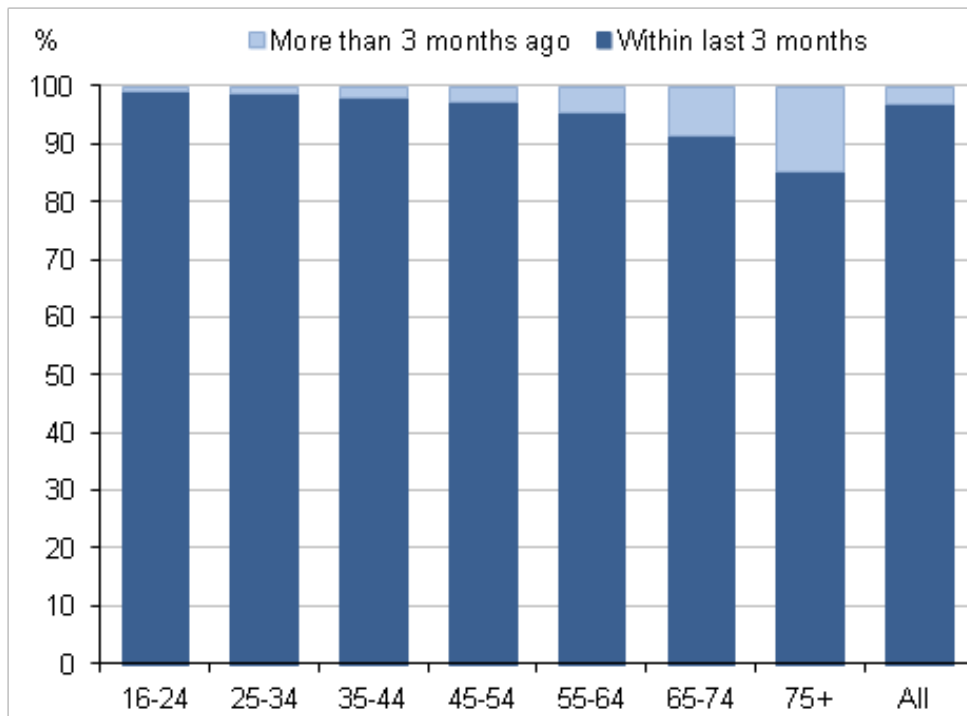
1. Persons aged 16 and over in paid employment.

Download chart

[XLS](#) [XLS format](#)
(31.5 Kb)

Recent Internet users (Tables 6A and 6B)

At Q3 2012, 97% of those adults who had ever used the Internet had used it within the three months prior to interview and 3% had used it more than three months ago. Adults aged over 75 years were more likely to have last used the Internet more than 3 months ago. While 15% of Internet users aged over 75 years last used the Internet more than 3 months ago, in contrast, just 1% of Internet users aged 16 to 24 years had last used it more than three months ago.

Figure 7: When adults last used the Internet by age group, 2012 Q3**Download chart**

XLS [XLS format](#)
(27.5 Kb)

Background notes**1. Key issues specific to this bulletin**

This is the latest in a series of quarterly releases about Internet use by adults aged 16 or over. The results in this release are in respect of Q3 2012 (July to September 2012). ONS began publishing quarterly data on Internet users and non-users to enable more timely information on Internet use to be made available. The source of the information is the Labour Force Survey (LFS). A [quality report for the LFS \(227.1 Kb Pdf\)](#) is available on the ONS website.

The new question added to the Labour Force Survey in Q1 2011 was 'when did you last use the Internet?' This is the same question that has been used in the Opinions and Lifestyles Survey to collect data for the annual publication '[Internet Access – Households and Individuals](#)'.

The term 'disabled' is used to refer to those who self-assess that they have a disability in line with the Disability Discrimination Act (DDA) definition of disability. Respondents who did not answer whether they had a disability have been included in the category 'No disability' in tables 1A, 1B, 6A and 6B.

'Don't know' responses are not separately identified in this bulletin. Therefore, percentage breakdowns sum to less than 100%, reflecting the small number of 'don't know' responses to the Internet use question.

This quarterly release was previously published as an article for the periods Q1 to Q4 2011. From Q1 2012 onwards, this release has been published as a statistical bulletin.

2. National statistics

This release was previously published with experimental statistics status.

The UK Statistics Authority has reviewed this publication in their report "[Assessment of compliance with the Code of Practice for Official Statistics: Statistics on Internet Access](#)". This review recommended that the statistics published in the Internet Access Quarterly Update be designated as National Statistics, subject to ONS carrying out certain requirements. ONS has carried out the necessary work to comply with the requirements set out in this report and as a result of this, the UK Statistics Authority has confirmed that from this quarter onwards, this release now has National Statistics status.

3. Revisions

There are no revisions to estimates previously published.

Percentages for Q4 2011 for females, by age (Table 2B), who have 'ever used' the Internet have been corrected as they had previously been erroneously carried forward from Q3 2011.

4. Users and uses of the data

The organisation Race Online 2012 was established to help more people get online for the first time by 2012. Race Online 2012 needed more frequent statistics on people who had never used the Internet, but this could not be met by the annual Internet Access Survey. Therefore, ONS started publishing an experimental quarterly update on Internet users and non-users. This quarterly release was expressly designed to fill this information gap.

Race Online 2012 has recently been replaced by a new partnership organisation, Go ON UK. Its aim is to get the final 7.6 million adults online.

Within the UK there is wide interest in these quarterly estimates from researchers, public bodies, the media, charities and academics. The UK government is moving towards a policy of 'digital by default' in the provision of a range of public services. This is where the Internet becomes the preferred method for the delivery of services. The statistics in this release make it possible to monitor the number of people who are not online, which may be relevant for how people are able to use public services that are delivered online. These statistics also help inform the wider debate about digital and social exclusion.

As well as user interest in adults who have ever or never used the Internet, there is also interest in adults who have used the Internet, but not recently. Therefore, in Q2 2012 new estimates of 'lapsed Internet users' were introduced, showing estimates of adults who had last used the Internet more than three months ago.

Do you make use of our quarterly estimates of Internet Access? If yes, we would like to hear from you (esociety@ons.gsi.gov.uk) and understand how you make use of these quarterly statistics. This will enable us, in the future, to better meet your needs as a user.

5. Coherence

The results published in this quarterly bulletin focus on Internet users and non-users. These results are not directly comparable with the estimates contained in the 2012 annual Internet Access Households and Individuals bulletin, which was published on 24 August 2012. This was a partial release of the annual 2012 Internet Access Households and Individuals survey results, as it did not contain the estimates of adults' use of the Internet, that have been included in previous years. These estimates have been delayed until February 2013 due to a data collection problem.

The annual bulletin contains a wide range of information about Internet access and use, but from a smaller sample than the LFS.

The 2012 annual bulletin was compiled from approximately 3,300 interviews conducted for the Opinions and Lifestyles Survey, whereas approximately 43,000 households respond each quarter to the LFS. The larger sample size in the LFS allows for more detailed and accurate socio-demographic analysis than is possible with the Opinions and Lifestyles dataset.

It is also important to note that the estimates in this bulletin are on a UK basis whereas the Internet Access 2012 results relate to Great Britain only.

6. Sampling variability

The Q3 2012 confidence intervals table shows estimated 95% confidence intervals for estimates relating to Internet users and non-users, by age and sex. The estimates, included as part of this statistical bulletin, come from survey data and so have a degree of statistical error associated with them. Confidence intervals are an indication of the reliability of the estimate; the smaller the interval, the more reliable the estimate is likely to be. With regards to '95% confidence intervals', we mean that if we repeated our survey 100 times, 95% of the time (95 times out of 100), the true population value would fall within the range of these confidence intervals.

Table 1: Internet non-users, 95% confidence intervals, 2012 Q3

	Never used the Internet		
	Lower limit	Survey estimate	Upper limit
All (thousands)	7,607	7,630	7,653
All (%)	14.8	15.1	15.4
Age group (years; thousands)			
16-24	55	55	55
25-34	124	124	124
35-44	271	272	273
45-54	680	684	688
55-64	1,158	1,167	1,176
65-74	2,063	2,085	2,107
75+	3,186	3,244	3,302
Age group (%)			
16-24	0.6	0.8	1.0
25-34	1.2	1.5	1.8
35-44	2.8	3.2	3.6
45-54	7.3	7.8	8.3
55-64	15.5	16.3	17.1
65-74	35.3	36.4	37.5
75+	67.8	69.6	71.4
Sex (thousands)			
Male	3,154	3,167	3,180
Female	4,443	4,463	4,483
Sex (%)			
Male	12.4	12.8	13.2
Female	16.9	17.3	17.7

Download table

XLS [XLS format](#)

(20.5 Kb)

The larger the sample that is used for a particular estimate, the narrower the confidence interval will be. The higher level regional estimates are based on larger sample sizes than the lower level regional estimates. For example, in table 4D the confidence interval range for the percentage of Internet non-users in the North East is 18% to 21%. The confidence interval range for Hartlepool and Stockton-on-Tees, which is part of the North East, is 20% to 31%. The interval is larger, due to the smaller sample size used for the estimate for Hartlepool and Stockton-on-Tees.

7. Rounding

In all tables totals may not equal the sum of independently rounded components.

8. Social media

Follow ONS on [Twitter](#) and receive up to date information about our statistics.

Like ONS on [Facebook](#) to receive our updates in your newsfeed and to post comments on our page.

Watch our videos on [YouTube](#).

9. ONS business statistics

To find out about official business statistics, and choose the right data for your needs, please use our [interactive guide](#). This will help you to find relevant statistics published by ONS. The guide allows you to choose the industry, feature of the economy and geography you are interested in, and returns a list of the available ONS indicators, together with guidance on their use, and links to releases.

10. Special events

ONS has recently published commentary, analysis and policy on 'Special Events' which may affect statistical outputs. For full details go to the [Special Events](#) page on the ONS website.

Release policy

11. Details of the policy governing the release of new data are available by visiting www.statisticsauthority.gov.uk/assessment/code-of-practice/index.html or from the Media Relations Office email: media.relations@ons.gsi.gov.uk

These National Statistics are produced to high professional standards and released according to the arrangements approved by the UK Statistics Authority.

Copyright

© Crown copyright 2012

You may use or re-use this information (not including logos) free of charge in any format or medium, under the terms of the Open Government Licence. To view this licence, visit www.nationalarchives.gov.uk/doc/open-government-licence/ or write to the Information Policy Team, The National Archives, Kew, London TW9 4DU, or email: psi@nationalarchives.gsi.gov.uk.

This document is also available on our website at www.ons.gov.uk.

Statistical contacts

Name	Phone	Department	Email
David Matthews	+44 (0)1633 456756	Office for National Statistics	esociety@ons.gsi.gov.uk

Next Publication Date:

20 February 2013

Issuing Body:

Office for National Statistics

Media Contact Details:

Telephone: 0845 604 1858
(8.30am-5.30pm Weekdays)

Emergency out of hours (limited service): 07867 906553

Email:

media.relations@ons.gsi.gov.uk

**Internet Access Quarterly Update: Q3 2012**

Table 1A	Internet users and non-users, UK
Table 1B (%)	Internet users and non-users, UK
Table 2A	Internet users and non-users, by age group and sex, UK
Table 2B (%)	Internet users and non-users, by age group and sex, UK
Table 3A	Internet users and non-users, by geographical location, UK
Table 3B (%)	Internet users and non-users, by geographical location, UK
Table 4A	Internet users and non-users, by low level geographical location, UK
Table 4B (%)	Internet users and non-users, by low level geographical location, UK
Table 4C	Internet non users: 95 per cent confidence intervals
Table 4D (%)	Internet non users: 95 per cent confidence intervals
Table 5A	Internet users and non-users, by gross weekly pay, UK
Table 5B (%)	Internet users and non-users, by gross weekly pay, UK
Table 6A	Recent and lapsed Internet users, UK
Table 6B (%)	Recent and lapsed Internet users, UK

All tables contain data for calendar quarters:

Q1 - January - March

Q2 - April - June

Q3 - July - September

Q4 - October - December

Statistical contact: David Matthews, Office for National Statistics,

Telephone number +44 (0)1633 456756

Email esociety@ons.gsi.gov.uk

Table 1A: Internet users and non users, UK

Persons aged 16 years and over

thousands

	Ever used							Never used						
	2011 Q1	2011 Q2	2011 Q3	2011 Q4	2012 Q1	2012 Q2	2012 Q3	2011 Q1	2011 Q2	2011 Q3	2011 Q4	2012 Q1	2012 Q2	2012 Q3
All adults	41,108	41,257	41,621	41,987	42,156	42,518	42,792	8,739	8,727	8,428	8,204	8,121	7,823	7,630
Age group (years)														
16-24	7,234	7,186	7,164	7,176	7,162	7,167	7,127	69	64	80	73	67	51	55
25-34	8,022	8,090	8,148	8,222	8,297	8,363	8,405	170	170	169	149	126	115	124
35-44	8,264	8,227	8,199	8,173	8,138	8,121	8,095	377	373	348	334	320	284	272
45-54	7,697	7,776	7,831	7,892	7,949	8,054	8,126	874	850	821	816	798	721	684
55-64	5,741	5,769	5,811	5,873	5,906	5,946	5,998	1,515	1,500	1,439	1,353	1,297	1,232	1,167
65-74	3,074	3,132	3,216	3,317	3,440	3,541	3,635	2,293	2,290	2,257	2,220	2,167	2,122	2,085
75+	1,075	1,077	1,251	1,334	1,264	1,326	1,405	3,441	3,479	3,315	3,260	3,347	3,299	3,244
Sex														
Male	20,674	20,712	20,917	21,150	21,212	21,362	21,476	3,645	3,677	3,511	3,359	3,348	3,240	3,167
Female	20,434	20,544	20,704	20,837	20,944	21,155	21,316	5,094	5,050	4,917	4,845	4,773	4,583	4,463
Legal marital status														
Single or never married / civil partnership	15,532	15,655	15,716	15,720	15,858	15,941	15,955	1,125	1,093	1,012	977	992	905	859
Married / civil partnership	20,333	20,227	20,371	20,731	20,707	20,802	21,083	4,343	4,311	4,124	4,004	3,955	3,844	3,724
Separated / separated civil partner	1,081	1,093	1,170	1,160	1,141	1,191	1,159	229	216	225	234	216	198	202
Divorced / former civil partner	3,095	3,214	3,204	3,218	3,311	3,323	3,298	832	898	911	845	845	801	763
Widowed / surviving civil partner	1,067	1,067	1,160	1,158	1,140	1,261	1,296	2,211	2,208	2,156	2,144	2,113	2,076	2,083
Disability														
DDA disabled ¹	7,525	7,260	7,412	7,521	7,598	7,663	7,711	4,214	4,236	4,253	3,977	4,038	3,908	3,889
Work limiting disability only	1,167	1,179	1,236	1,241	1,220	1,271	1,265	148	152	154	151	140	141	134
No disability ²	32,415	32,817	32,973	33,225	33,338	33,583	33,815	4,377	4,338	4,021	4,076	3,943	3,774	3,607

Discrepancies may occur between totals and the sum of their independently rounded components.

Source: Office for National Statistics

1 DDA disabled refers to those who self-assess that they have a disability in line with the Disability Discrimination Act (DDA) definition of disability.

2 A small number of respondents who chose not to declare whether they had a disability have been included within the category 'No disability'.

Table 1B: Internet users and non users, UK

Persons aged 16 years and over

	Ever used							Never used							%
	2011 Q1	2011 Q2	2011 Q3	2011 Q4	2012 Q1	2012 Q2	2012 Q3	2011 Q1	2011 Q2	2011 Q3	2011 Q4	2012 Q1	2012 Q2	2012 Q3	
All adults	82.2	82.3	82.9	83.5	83.7	84.3	84.7	17.5	17.4	16.8	16.3	16.1	15.5	15.1	
Age group (years)															
16-24	98.8	98.8	98.6	98.7	98.6	98.9	98.9	0.9	0.9	1.1	1.0	0.9	0.7	0.8	
25-34	97.5	97.7	97.8	98.0	98.3	98.5	98.3	2.1	2.1	2.0	1.8	1.5	1.4	1.5	
35-44	95.4	95.4	95.6	95.9	96.0	96.4	96.6	4.3	4.3	4.1	3.9	3.8	3.4	3.2	
45-54	89.5	89.9	90.2	90.5	90.8	91.6	92.1	10.2	9.8	9.5	9.5	9.1	8.2	7.8	
55-64	79.0	79.2	79.9	81.1	81.8	82.7	83.6	20.8	20.6	19.8	18.7	18.0	17.1	16.3	
65-74	57.1	57.6	58.7	59.8	61.3	62.4	63.4	42.6	42.1	41.2	40.0	38.6	37.4	36.4	
75+	23.8	23.6	27.3	29.0	27.4	28.6	30.1	76.1	76.3	72.4	70.8	72.5	71.2	69.6	
Sex															
Male	84.7	84.6	85.3	86.1	86.1	86.6	86.9	14.9	15.0	14.3	13.7	13.6	13.1	12.8	
Female	79.9	80.1	80.6	81.0	81.3	82.0	82.5	19.9	19.7	19.2	18.8	18.5	17.8	17.3	
Legal marital status															
Single or never married / civil partnership	92.9	93.2	93.6	93.9	93.8	94.3	94.6	6.7	6.5	6.0	5.8	5.9	5.4	5.1	
Married / civil partnership	82.2	82.2	82.9	83.6	83.8	84.2	84.8	17.6	17.5	16.8	16.2	16.0	15.6	15.0	
Separated / separated civil partner	82.3	83.3	83.8	83.1	83.9	85.6	85.0	17.4	16.5	16.1	16.7	15.9	14.2	14.8	
Divorced / former civil partner	78.7	78.0	77.7	79.2	79.6	80.5	81.2	21.1	21.8	22.1	20.8	20.3	19.4	18.8	
Widowed / surviving civil partner	32.5	32.6	34.9	35.1	35.0	37.7	38.3	67.3	67.4	64.9	64.9	64.9	62.1	61.6	
Disability															
DDA disabled ¹	63.9	63.0	63.3	65.2	65.1	66.0	66.3	35.8	36.8	36.3	34.5	34.6	33.7	33.4	
Work limiting disability only	88.3	88.4	88.6	88.9	89.5	89.6	90.1	11.2	11.4	11.1	10.8	10.3	10.0	9.6	
No disability ²	87.9	88.1	88.9	88.9	89.2	89.7	90.2	11.9	11.6	10.8	10.9	10.6	10.1	9.6	

Percentages sum to less than 100 due to "don't know" responses.

Source: Office for National Statistics

1 DDA disabled refers to those who self-assess that they have a disability in line with the Disability Discrimination Act (DDA) definition of disability.

2 A small number of respondents who chose not to declare whether they had a disability have been included within the category 'No Disability'.

Table 2A: Internet users and non-users, by age group (years) and sex, UK

Persons aged 16 years and over

thousands

	Ever used							Never used						
	2011 Q1	2011 Q2	2011 Q3	2011 Q4	2012 Q1	2012 Q2	2012 Q3	2011 Q1	2011 Q2	2011 Q3	2011 Q4	2012 Q1	2012 Q2	2012 Q3
Male														
All	20,674	20,712	20,917	21,150	21,212	21,362	21,476	3,645	3,677	3,511	3,359	3,348	3,240	3,167
16-24	3,679	3,650	3,636	3,651	3,641	3,645	3,617	34	38	43	37	36	28	29
25-34	4,041	4,075	4,121	4,158	4,198	4,239	4,254	89	95	80	71	59	51	62
35-44	4,100	4,087	4,072	4,070	4,045	4,032	4,016	176	169	155	140	142	133	131
45-54	3,784	3,834	3,849	3,882	3,922	3,962	3,995	424	399	396	395	376	348	332
55-64	2,860	2,865	2,900	2,927	2,934	2,946	2,968	688	686	643	606	585	561	532
65-74	1,590	1,614	1,661	1,710	1,781	1,833	1,864	970	972	952	934	894	870	869
75+	620	587	677	753	689	706	761	1,264	1,319	1,241	1,177	1,256	1,249	1,212
Female														
All	20,434	20,544	20,704	20,837	20,944	21,155	21,316	5,094	5,050	4,917	4,845	4,773	4,583	4,463
16-24	3,556	3,535	3,528	3,525	3,521	3,523	3,510	35	26	37	36	32	23	25
25-34	3,981	4,016	4,027	4,065	4,099	4,124	4,151	81	76	89	78	67	64	62
35-44	4,164	4,140	4,127	4,103	4,093	4,088	4,079	200	204	192	194	177	151	141
45-54	3,913	3,943	3,982	4,010	4,026	4,092	4,130	451	451	425	421	422	373	352
55-64	2,882	2,903	2,911	2,946	2,972	3,000	3,030	827	814	796	747	712	670	635
65-74	1,484	1,518	1,555	1,607	1,659	1,708	1,771	1,323	1,318	1,304	1,286	1,273	1,251	1,216
75+	455	490	574	580	575	620	644	2,177	2,160	2,074	2,083	2,090	2,050	2,032

Discrepancies may occur between totals and the sum of their independently rounded components.

Source: Office for National Statistics

Table 2B: Internet users and non-users, by age group (years) and sex, UK

Persons aged 16 years and over

%

	Ever used							Never used						
	2011 Q1	2011 Q2	2011 Q3	2011 Q4	2012 Q1	2012 Q2	2012 Q3	2011 Q1	2011 Q2	2011 Q3	2011 Q4	2012 Q1	2012 Q2	2012 Q3
Male														
All	84.7	84.6	85.3	86.1	86.1	86.6	86.9	14.9	15.0	14.3	13.7	13.6	13.1	12.8
16-24	98.7	98.5	98.4	98.7	98.5	98.9	98.7	0.9	1.0	1.2	1.0	1.0	0.8	0.8
25-34	97.3	97.4	97.8	98.0	98.3	98.6	98.3	2.1	2.3	1.9	1.7	1.4	1.2	1.4
35-44	95.5	95.6	95.8	96.3	96.2	96.5	96.6	4.1	4.0	3.7	3.3	3.4	3.2	3.2
45-54	89.6	90.2	90.2	90.6	91.1	91.7	92.1	10.0	9.4	9.3	9.2	8.7	8.1	7.7
55-64	80.4	80.5	81.6	82.7	83.2	83.8	84.6	19.3	19.3	18.1	17.1	16.6	16.0	15.2
65-74	61.9	62.3	63.5	64.6	66.5	67.6	68.1	37.8	37.5	36.4	35.3	33.4	32.1	31.8
75+	32.8	30.8	35.2	38.9	35.4	36.0	38.5	66.9	69.1	64.6	60.8	64.6	63.7	61.3
Female														
All	79.9	80.1	80.6	81.0	81.3	82.0	82.5	19.9	19.7	19.2	18.8	18.5	17.8	17.3
16-24	98.8	99.0	98.8	98.7	98.8	99.0	99.0	1.0	0.7	1.0	1.0	0.9	0.6	0.7
25-34	97.7	98.0	97.7	98.0	98.3	98.3	98.4	2.0	1.8	2.2	1.9	1.6	1.5	1.5
35-44	95.2	95.2	95.4	95.4	95.8	96.3	96.6	4.6	4.7	4.4	4.5	4.2	3.5	3.3
45-54	89.5	89.7	90.2	90.4	90.4	91.5	92.1	10.3	10.3	9.6	9.5	9.5	8.4	7.8
55-64	77.6	78.0	78.4	79.6	80.5	81.6	82.5	22.3	21.9	21.4	20.2	19.3	18.2	17.3
65-74	52.7	53.4	54.3	55.4	56.6	57.6	59.2	47.0	46.4	45.5	44.3	43.4	42.2	40.6
75+	17.3	18.5	21.6	21.7	21.5	23.2	24.0	82.7	81.4	78.1	78.1	78.2	76.7	75.7

Percentages sum to less than 100 due to "don't know" responses.

Source: Office for National Statistics

Table 3A: Internet users and non-users, by geographical location, UK

Persons aged 16 years and over

thousands

	Ever used							Never used						
	2011 Q1	2011 Q2	2011 Q3	2011 Q4	2012 Q1	2012 Q2	2012 Q3	2011 Q1	2011 Q2	2011 Q3	2011 Q4	2012 Q1	2012 Q2	2012 Q3
UK	41,108	41,257	41,621	41,987	42,156	42,518	42,792	8,739	8,727	8,428	8,204	8,121	7,823	7,630
North East	1,628	1,663	1,665	1,671	1,676	1,718	1,698	462	429	432	427	411	388	420
Tees Valley and Durham	717	739	742	754	728	747	729	204	179	185	179	188	176	203
Northumberland and Tyne and Wear	910	924	923	917	948	971	969	258	250	246	247	223	213	217
North West	4,458	4,474	4,586	4,604	4,638	4,688	4,692	1,059	1,059	951	939	905	886	881
Cumbria	322	305	331	338	325	335	314	81	108	83	71	79	63	80
Cheshire	677	680	701	678	679	703	695	128	127	100	120	119	100	112
Greater Manchester	1,705	1,725	1,769	1,786	1,762	1,786	1,787	372	361	319	317	336	344	332
Lancashire	922	937	918	938	963	960	981	218	195	224	210	191	201	178
Merseyside	833	828	867	863	908	904	915	260	268	225	221	181	178	178
Yorkshire and the Humber	3,464	3,451	3,487	3,540	3,526	3,555	3,608	780	800	772	733	756	761	713
East Yorkshire and Northern Lincolnshire	592	594	613	617	614	611	620	145	137	129	125	138	142	133
North Yorkshire	545	532	525	547	549	553	576	106	127	126	107	98	100	79
South Yorkshire	872	873	878	873	884	876	899	188	177	189	205	201	216	209
West Yorkshire	1,455	1,453	1,471	1,503	1,479	1,514	1,512	340	359	328	296	319	303	293
East Midlands	2,938	2,964	2,980	3,020	3,026	3,054	3,074	666	643	629	600	608	582	567
Derbyshire and Nottinghamshire	1,361	1,358	1,378	1,387	1,413	1,440	1,459	333	323	309	325	308	296	274
Leicestershire, Rutland & Northamptonshire	1,123	1,155	1,133	1,153	1,140	1,139	1,147	214	192	213	184	201	191	192
Lincolnshire	453	451	469	480	474	474	468	120	127	108	91	99	95	102
West Midlands	3,451	3,443	3,476	3,499	3,522	3,571	3,554	873	891	865	848	826	786	802
Herefordshire, Worcestershire and Warwickshire	832	813	838	835	856	841	838	194	203	179	188	178	193	186
Shropshire and Staffordshire	1,000	1,015	1,014	1,009	1,000	1,043	1,040	221	218	220	223	223	178	192
West Midlands	1,620	1,615	1,624	1,655	1,666	1,687	1,676	458	470	466	438	425	415	424
East of England	3,939	3,927	3,989	3,996	3,987	4,073	4,115	707	732	676	681	699	670	635
East Anglia	1,617	1,576	1,622	1,603	1,598	1,645	1,628	315	352	294	315	318	311	315
Bedfordshire and Hertfordshire	1,155	1,152	1,176	1,176	1,188	1,201	1,266	171	177	170	183	184	190	146
Essex	1,167	1,199	1,191	1,217	1,201	1,227	1,220	221	203	212	183	197	169	174
London	5,452	5,488	5,500	5,579	5,588	5,544	5,591	874	887	882	837	853	765	739
Inner London	2,212	2,208	2,255	2,271	2,280	2,261	2,250	324	347	305	302	305	263	279
Outer London	3,240	3,280	3,245	3,307	3,308	3,283	3,341	550	540	577	534	547	502	460
South East	5,816	5,853	5,897	5,923	5,955	6,033	6,071	961	940	909	906	887	843	824
Berkshire, Buckinghamshire and Oxfordshire	1,579	1,570	1,586	1,577	1,612	1,640	1,633	180	207	205	216	171	167	169
Surrey, East and West Sussex	1,876	1,882	1,886	1,893	1,891	1,930	1,953	272	303	304	308	325	264	249
Hampshire and Isle of Wight	1,297	1,307	1,294	1,298	1,296	1,318	1,339	238	207	210	196	197	194	187
Kent	1,065	1,094	1,132	1,154	1,157	1,145	1,146	271	223	190	186	195	218	219
South West	3,574	3,564	3,597	3,645	3,656	3,656	3,694	681	693	671	631	636	647	611
Gloucestershire, Wiltshire and Bristol/Bath area	1,582	1,590	1,633	1,655	1,636	1,642	1,661	309	311	274	256	258	269	241
Dorset and Somerset	865	853	847	855	861	861	878	158	172	173	154	157	156	148
Cornwall and Isles of Scilly	351	341	341	361	363	365	382	79	89	93	72	79	85	79
Devon	777	781	775	775	796	789	773	135	122	132	150	142	137	142
Wales	1,958	1,954	1,949	1,961	1,988	1,980	2,007	471	477	484	481	459	470	447
West Wales and The Valleys	1,205	1,211	1,192	1,189	1,241	1,217	1,238	338	325	347	339	290	329	300
East Wales	753	743	757	772	747	763	769	134	152	137	142	169	142	146
Scotland	3,442	3,454	3,476	3,501	3,533	3,549	3,592	807	801	774	762	736	710	675
North Eastern Scotland	356	368	361	368	377	349	401	86	76	74	73	60	32	41
Eastern Scotland	1,381	1,379	1,394	1,387	1,382	1,392	1,404	256	269	256	252	262	253	238
South Western Scotland	1,465	1,463	1,477	1,488	1,521	1,510	1,530	414	416	394	394	365	362	349
Highlands and Islands	240	245	244	259	253	298	257	51	39	51	44	48	64	47
Northern Ireland	988	1,020	1,019	1,047	1,061	1,097	1,097	397	375	383	358	346	315	317

Discrepancies may occur between totals and the sum of their independently rounded components.

Source: Office for National Statistics

Table 3B: Internet users and non-users, by geographical location, UK

Persons aged 16 years and over

%

	Ever used							Never used						
	2011 Q1	2011 Q2	2011 Q3	2011 Q4	2012 Q1	2012 Q2	2012 Q3	2011 Q1	2011 Q2	2011 Q3	2011 Q4	2012 Q1	2012 Q2	2012 Q3
UK	82.2	82.3	82.9	83.5	83.7	84.3	84.7	17.5	17.4	16.8	16.3	16.1	15.5	15.1
North East	77.4	78.9	78.9	79.2	79.3	80.3	79.2	22.0	20.4	20.5	20.2	19.4	18.2	19.6
Tees Valley and Durham	77.2	79.5	79.2	79.9	77.4	78.4	76.4	21.9	19.3	19.8	19.0	20.0	18.4	21.3
Northumberland and Tyne and Wear	77.6	78.5	78.8	78.6	80.9	81.8	81.5	22.0	21.2	21.0	21.2	19.0	17.9	18.2
North West	80.5	80.7	82.7	82.9	83.5	84.0	84.0	19.1	19.1	17.1	16.9	16.3	15.9	15.8
Cumbria	78.8	73.5	80.0	82.6	80.4	84.1	79.5	20.0	26.1	19.9	17.4	19.5	15.8	20.3
Cheshire	84.1	84.0	87.3	84.8	85.0	87.4	86.1	15.9	15.7	12.5	15.0	14.9	12.4	13.9
Greater Manchester	81.9	82.6	84.6	84.8	83.7	83.8	84.2	17.8	17.3	15.3	15.0	16.0	16.1	15.7
Lancashire	80.5	82.6	80.3	81.5	83.1	82.6	84.3	19.1	17.2	19.6	18.2	16.4	17.3	15.3
Merseyside	75.9	75.5	79.2	79.4	83.3	83.3	83.4	23.7	24.4	20.5	20.3	16.6	16.4	16.2
Yorkshire and the Humber	81.4	81.0	81.6	82.7	82.2	82.3	83.4	18.3	18.8	18.1	17.1	17.6	17.6	16.5
East Yorkshire and Northern Lincolnshire	80.1	81.2	82.4	83.1	81.6	81.0	82.2	19.6	18.8	17.3	16.8	18.3	18.9	17.6
North Yorkshire	83.6	80.8	80.6	83.6	84.8	84.6	87.9	16.2	19.2	19.3	16.3	15.1	15.3	12.1
South Yorkshire	82.0	82.7	82.1	80.9	81.4	80.2	81.0	17.7	16.8	17.7	19.0	18.5	19.7	18.8
West Yorkshire	80.8	80.0	81.4	83.4	82.1	83.2	83.7	18.9	19.8	18.1	16.4	17.7	16.6	16.2
East Midlands	81.4	82.0	82.3	83.2	83.2	83.8	84.4	18.5	17.8	17.4	16.5	16.7	16.0	15.6
Derbyshire and Nottinghamshire	80.2	80.5	81.3	80.9	82.0	82.8	84.1	19.6	19.2	18.2	18.9	17.9	17.0	15.8
Leicestershire, Rutland & Northamptonshire	83.8	85.5	84.0	86.0	85.0	85.5	85.6	16.0	14.2	15.8	13.7	15.0	14.3	14.3
Lincolnshire	79.1	78.0	81.3	83.6	82.7	83.4	82.1	20.9	22.0	18.7	15.9	17.3	16.6	17.8
West Midlands	79.5	79.2	79.8	80.3	80.9	81.8	81.4	20.1	20.5	19.9	19.5	19.0	18.0	18.4
Herefordshire, Worcestershire and Warwickshire	81.1	79.7	82.1	81.3	82.8	81.3	81.7	18.9	19.9	17.5	18.3	17.2	18.6	18.1
Shropshire and Staffordshire	81.6	82.2	82.0	81.8	81.7	85.2	84.2	18.0	17.7	17.8	18.1	18.2	14.5	15.6
West Midlands	77.6	77.2	77.5	78.9	79.5	80.1	79.6	21.9	22.5	22.2	20.9	20.3	19.7	20.1
East of England	84.7	84.2	85.4	85.3	85.0	85.8	86.5	15.2	15.7	14.5	14.5	14.9	14.1	13.3
East Anglia	83.6	81.6	84.5	83.4	83.2	84.1	83.7	16.3	18.2	15.3	16.4	16.5	15.9	16.2
Bedfordshire and Hertfordshire	86.9	86.6	87.3	86.4	86.5	86.3	89.6	12.8	13.3	12.7	13.5	13.4	13.7	10.3
Essex	84.0	85.5	84.7	86.9	85.9	87.9	87.4	15.9	14.5	15.0	13.1	14.1	12.1	12.4
London	85.7	85.9	85.9	86.7	86.5	87.6	88.1	13.7	13.9	13.8	13.0	13.2	12.1	11.7
Inner London	86.6	86.1	87.7	87.8	87.9	89.4	88.7	12.7	13.5	11.8	11.7	11.8	10.4	11.0
Outer London	85.1	85.8	84.7	85.9	85.6	86.5	87.7	14.5	14.1	15.1	13.9	14.2	13.2	12.1
South East	85.6	85.9	86.4	86.6	86.9	87.6	87.9	14.2	13.8	13.3	13.3	12.9	12.2	11.9
Berkshire, Buckinghamshire and Oxfordshire	89.6	88.1	88.3	87.8	90.3	90.6	90.4	10.2	11.6	11.4	12.0	9.6	9.2	9.4
Surrey, East and West Sussex	87.1	86.0	85.9	86.0	85.3	87.8	88.7	12.7	13.8	13.8	14.0	14.7	12.0	11.3
Hampshire and Isle of Wight	84.4	86.0	85.8	86.7	86.6	87.0	87.6	15.5	13.6	13.9	13.1	13.2	12.8	12.2
Kent	79.5	82.7	85.5	86.0	85.5	83.8	83.8	20.2	16.9	14.3	13.9	14.4	16.0	16.0
South West	83.9	83.5	84.1	85.0	85.1	84.9	85.6	16.0	16.2	15.7	14.7	14.8	15.0	14.2
Gloucestershire, Wiltshire and Bristol/Bath area	83.4	83.4	85.5	86.5	86.3	85.8	87.1	16.3	16.3	14.3	13.4	13.6	14.1	12.6
Dorset and Somerset	84.5	83.0	82.8	84.2	84.6	84.4	85.4	15.4	16.7	16.9	15.2	15.4	15.3	14.4
Cornwall and Isles of Scilly	81.6	79.1	78.5	83.4	82.0	81.1	82.6	18.4	20.7	21.5	16.6	17.9	18.9	17.2
Devon	85.2	86.3	85.1	83.8	84.8	85.2	84.4	14.8	13.4	14.4	16.2	15.2	14.8	15.5
Wales	80.5	80.2	79.8	80.2	81.1	80.7	81.7	19.4	19.6	19.8	19.7	18.7	19.2	18.2
West Wales and The Valleys	78.0	78.6	77.1	77.8	80.9	78.6	80.3	21.9	21.1	22.5	22.2	18.9	21.2	19.5
East Wales	84.9	82.8	84.4	84.3	81.5	84.2	83.9	15.1	17.0	15.2	15.5	18.4	15.6	16.0
Scotland	80.9	81.1	81.5	82.0	82.6	83.1	84.1	19.0	18.8	18.2	17.8	17.2	16.6	15.8
North Eastern Scotland	80.5	82.7	82.7	83.1	86.0	91.6	90.6	19.4	17.2	16.9	16.4	13.8	8.4	9.2
Eastern Scotland	84.3	83.6	84.4	84.5	83.9	84.5	85.5	15.7	16.3	15.5	15.3	15.9	15.3	14.5
South Western Scotland	77.8	77.6	78.6	79.0	80.6	80.4	81.3	22.0	22.1	21.0	20.9	19.3	19.3	18.5
Highlands and Islands	82.4	86.2	82.5	85.2	83.2	82.0	84.5	17.6	13.8	17.2	14.6	15.8	17.6	15.3
Northern Ireland	70.9	72.7	72.4	74.3	75.1	77.5	77.4	28.5	26.7	27.2	25.4	24.5	22.3	22.4

Percentages sum to less than 100 due to "don't know" responses.

Source: Office for National Statistics

Table 4A: Internet users and non-users, by low level geographical location, UK
Persons aged 16 years and over

thousands

	Ever used						Never used					
	2011 Q2	2011 Q3	2011 Q4	2012 Q1	2012 Q2	2012 Q3	2011 Q2	2011 Q3	2011 Q4	2012 Q1	2012 Q2	2012 Q3
UK	41,257	41,621	41,987	42,156	42,518	42,792	8,727	8,428	8,204	8,121	7,823	7,630
North East	1,663	1,665	1,671	1,676	1,718	1,698	429	432	427	411	388	420
Hartlepool and Stockton-on-Tees	179	181	176	176	182	174	39	42	45	41	37	59
South Teesside	181	177	182	171	172	178	27	36	38	41	43	40
Darlington	69	75	74	70	71	73	20	11	13	17	10	11
Durham CC	310	309	322	311	322	304	93	96	83	89	87	93
Northumberland	199	203	194	213	209	214	63	53	57	40	46	40
Tyneside	555	552	539	554	569	576	132	132	152	134	132	122
Sunderland	170	168	184	180	192	179	55	61	39	48	35	54
North West	4,474	4,586	4,604	4,638	4,688	4,692	1,059	951	939	905	886	881
West Cumbria	141	158	161	160	158	151	52	36	36	35	34	38
East Cumbria	164	173	177	165	177	163	57	47	35	44	29	43
Halton and Warrington	203	216	213	213	215	213	44	40	35	30	31	39
Cheshire CC	476	486	465	466	488	481	83	61	85	89	69	73
Greater Manchester South	955	979	985	966	982	982	189	155	158	182	197	183
Greater Manchester North	770	790	801	797	804	805	172	164	159	154	147	149
Blackburn with Darwen	89	87	82	84	87	89	17	14	21	24	22	21
Blackpool	85	84	79	84	79	81	21	21	22	19	26	26
Lancashire CC	763	747	777	795	794	810	158	190	167	148	153	131
East Merseyside	208	215	208	212	209	217	60	41	46	46	41	40
Liverpool	253	270	274	308	298	312	104	92	84	56	61	46
Sefton	171	183	183	193	184	178	55	46	41	33	43	51
Wirral	196	200	198	196	213	209	49	45	49	45	33	41
Yorkshire and the Humber	3,451	3,487	3,540	3,526	3,555	3,608	800	772	733	756	761	713
City of Kingston upon Hull	164	166	175	170	175	168	38	43	36	43	39	45
East Riding of Yorkshire	222	227	223	229	223	241	53	50	56	52	64	40
North and North East Lincolnshire	208	220	218	214	214	211	46	35	33	43	40	47
York	153	134	142	146	135	151	22	35	25	14	32	14
North Yorkshire CC	379	392	406	403	418	425	105	90	82	84	68	65
Barnsley, Doncaster and Rotherham	487	494	495	499	511	513	112	116	126	130	127	126
Sheffield	386	384	378	385	366	386	65	73	79	71	89	82
Bradford	317	336	337	333	321	307	89	73	72	67	74	91
Leeds	538	522	560	546	559	559	121	133	99	118	113	96
Calderdale, Kirklees and Wakefield	599	612	605	601	634	645	148	122	125	134	116	105
East Midlands	2,964	2,980	3,020	3,026	3,054	3,074	643	629	600	608	582	567
Derby	152	152	158	155	179	167	39	39	38	44	18	39
East Derbyshire	174	179	184	184	198	187	40	44	45	43	28	42
South and West Derbyshire	333	334	329	339	327	341	65	66	59	53	72	50
Nottingham	201	205	193	199	210	204	49	38	62	52	46	45
North Nottinghamshire	273	292	298	297	290	315	76	63	67	67	83	60
South Nottinghamshire	224	216	226	239	237	245	53	59	55	48	49	36
Leicester	209	186	201	200	194	194	31	49	39	43	42	43
Leicestershire CC and Rutland	488	473	473	469	468	469	77	91	84	85	91	83
Northamptonshire	458	474	479	470	477	484	84	73	61	73	58	67
Lincolnshire	451	469	480	474	474	468	127	108	91	99	95	102
West Midlands	3,443	3,476	3,499	3,522	3,571	3,554	891	865	848	826	786	802
County of Herefordshire	110	119	114	112	128	112	25	20	30	36	23	38
Worcestershire	362	373	374	379	365	370	92	80	77	85	89	83
Warwickshire	341	345	347	365	348	356	87	78	81	57	81	65
Telford and Wrekin	107	109	107	98	100	110	18	16	18	24	26	16
Shropshire CC	200	196	202	200	212	215	46	47	40	43	34	37
Stoke-on-Trent	157	156	155	149	159	162	35	34	35	44	28	32
Staffordshire CC	551	552	546	553	573	553	119	124	129	112	90	108
Birmingham	604	626	634	632	650	648	189	161	161	160	147	163
Solihull	139	147	157	152	150	152	35	26	13	20	17	17
Coventry	190	197	194	202	203	192	58	53	52	49	55	59
Dudley and Sandwell	386	382	390	399	398	401	98	108	99	86	91	74
Walsall and Wolverhampton	296	272	281	280	286	283	90	118	112	111	104	111
East of England	3,927	3,989	3,996	3,987	4,073	4,115	732	676	681	699	670	635

Peterborough	119	115	111	115	110	110	22	20	24	15	24	21
Cambridgeshire CC	411	417	433	423	443	449	79	71	51	66	61	51
Norfolk	563	588	578	582	585	585	144	122	137	134	142	137
Suffolk	483	501	481	477	506	484	108	82	103	102	83	107
Luton	115	120	120	122	133	132	28	24	31	31	21	25
Bedfordshire CC	291	277	285	296	298	317	29	49	42	31	41	30
Hertfordshire	747	778	771	770	769	817	119	97	110	121	128	91
Southend-on-Sea	107	111	112	113	113	112	22	20	17	15	18	12
Thurrock	104	110	102	98	110	101	17	17	19	24	14	21
Essex CC	988	971	1,003	990	1,004	1,008	164	174	147	157	137	140
London	5,488	5,500	5,579	5,588	5,544	5,591	887	882	837	853	765	739
Inner London - West	821	847	838	849	838	808	97	88	109	96	87	112
Inner London - East	1,388	1,408	1,434	1,430	1,423	1,442	250	217	193	209	175	167
Outer London - East and North East	1,120	1,132	1,128	1,107	1,084	1,143	227	198	195	216	221	167
Outer London - South	851	843	885	896	878	866	136	130	114	115	100	138
Outer London - West and North West	1,309	1,271	1,295	1,306	1,321	1,332	177	249	226	217	181	156
South East	5,853	5,897	5,923	5,955	6,033	6,071	940	909	906	887	843	824
Berkshire	615	622	625	629	649	625	78	81	80	67	67	69
Milton Keynes	173	171	178	179	175	177	18	21	12	17	14	20
Buckinghamshire CC	352	354	339	351	358	358	42	40	46	32	35	37
Oxfordshire	430	440	436	452	458	473	69	64	77	55	51	44
Brighton and Hove	188	196	201	195	192	197	17	15	15	25	24	12
East Sussex CC	359	340	329	348	350	346	58	73	87	70	67	73
Surrey	803	789	808	798	821	838	111	129	111	116	90	76
West Sussex	531	561	555	550	566	572	117	86	95	115	84	88
Portsmouth	139	149	150	137	139	141	27	14	11	24	16	16
Southampton	170	163	154	162	173	172	21	23	29	27	17	27
Hampshire CC	908	897	901	907	911	937	138	143	138	122	144	124
Isle of Wight	91	85	93	90	94	90	22	30	18	23	16	20
Medway	150	159	169	168	162	178	45	40	36	34	41	23
Kent CC	945	973	985	989	982	969	178	150	150	161	177	196
South West	3,564	3,597	3,645	3,656	3,656	3,694	693	671	631	636	647	611
City of Bristol	298	297	308	293	294	297	53	51	41	46	49	45
North and North East Somerset, South Gloucestershire	442	468	480	469	465	471	98	75	61	72	80	57
Gloucestershire	398	394	399	410	409	419	89	99	89	67	75	69
Swindon	137	151	152	146	149	141	27	16	18	24	20	30
Wiltshire CC	315	323	316	318	325	334	43	33	46	49	45	40
Bournemouth and Poole	212	207	212	214	212	218	36	38	35	35	40	35
Dorset CC	288	280	289	289	283	290	55	64	48	50	58	52
Somerset	352	359	355	358	366	369	80	71	71	72	58	61
Cornwall and Isles of Scilly	341	341	361	363	365	382	89	93	72	79	85	79
Plymouth	180	182	172	179	170	184	27	27	38	33	38	20
Torbay	89	93	87	91	90	89	23	17	22	14	9	14
Devon CC	512	500	515	526	529	500	72	88	90	96	89	108
Wales	1,954	1,949	1,961	1,988	1,980	2,007	477	484	481	459	470	447
Isle of Anglesey	43	43	43	43	46	48	13	13	15	12	14	10
Gwynedd	81	77	74	74	80	82	13	20	20	26	14	15
Conwy and Denbighshire	128	134	134	137	140	150	45	34	38	33	28	21
South West Wales	253	243	242	240	220	224	53	59	58	62	81	72
Central Valleys	185	169	177	186	173	172	46	68	53	36	64	58
Gwent Valleys	199	212	212	229	217	221	66	58	51	41	56	54
Bridgend and Neath Port Talbot	170	164	169	178	183	185	49	59	50	40	34	34
Swansea	152	150	137	154	158	156	40	37	54	39	37	37
Monmouthshire and Newport	143	156	159	150	162	167	41	23	26	39	24	21
Cardiff and Vale of Glamorgan	337	322	327	324	322	334	37	49	53	56	57	44
Flintshire and Wrexham	181	189	197	191	190	185	54	47	36	39	39	53
Powys	83	89	89	82	89	83	21	17	26	35	22	28
Scotland	3,454	3,476	3,501	3,533	3,549	3,592	801	774	762	736	710	675
Angus and Dundee City	163	184	173	178	169	181	43	27	44	36	45	33
Clackmannanshire and Fife	291	294	291	279	296	293	58	49	44	58	39	35
East Lothian and Midlothian	124	117	125	132	130	120	25	32	20	14	17	24
The Scot Borders	76	70	77	70	70	73	17	21	14	20	19	15
City of Edinburgh	343	354	351	354	346	346	56	47	51	48	52	64
Falkirk	94	95	96	95	104	106	24	21	25	21	19	17

Perth and Kinross and Stirling	172	171	158	158	159	159	24	25	33	40	34	37
West Lothian	115	110	116	115	118	125	21	34	20	26	28	14
East and West Dunbartonshire												
Helensburgh	163	150	159	166	154	153	30	32	29	19	26	34
Dumfries and Galloway	88	86	90	98	96	101	28	32	32	26	24	25
East Ayrshire and North Ayrshire												
Mainland	163	159	159	166	153	163	48	53	49	41	44	34
Glasgow City	365	370	366	391	388	375	116	103	107	86	101	108
Inverclyde, East Renfrewshire and Renfrewshire	212	230	230	221	221	229	56	41	44	53	51	49
North Lanarkshire	199	207	211	203	208	209	60	53	51	63	53	50
South Ayrshire	70	75	74	80	81	81	22	19	27	20	19	14
South Lanarkshire	203	200	199	198	209	218	58	60	54	58	44	35
Aberdeen City and Aberdeenshire	368	361	368	377	349	401	76	74	73	60	32	41
Highlands and Islands	245	244	259	253	298	257	39	51	44	48	64	47
Northern Ireland	1,020	1,019	1,047	1,061	1,097	1,097	375	383	358	346	315	317

Discrepancies may occur between totals and the sum of their independently rounded components.

Source: Office for National Statistics

Table 4B: Internet users and non-users, by low level geographical location, UK

Persons aged 16 years and over

%

	Ever used						Never used						
	2011 Q2	2011 Q3	2011 Q4	2012 Q1	2012 Q2	2012 Q3	2011 Q2	2011 Q3	2011 Q4	2012 Q1	2012 Q2	2012 Q3	
UK	82.3	82.9	83.5	83.7	84.3	84.7	17.4	16.8	16.3	16.1	15.5	15.1	
North East	78.9	78.9	79.2	79.3	80.3	79.2	20.4	20.5	20.2	19.4	18.2	19.6	
Hartlepool and Stockton-on-Tees	80.9	79.9	78.4	78.8	79.7	73.7	17.8	18.4	20.3	18.3	16.0	25.2	
South Teesside	86.8	82.7	82.7	80.6	79.8	81.7	12.9	17.0	17.0	19.2	19.9	18.3	
Darlington	77.4	87.3	85.0	77.7	82.5	84.5	22.6	12.7	15.0	18.7	11.5	12.8	
Durham CC	75.5	75.2	78.1	75.0	76.1	73.4	22.6	23.5	20.2	21.5	20.4	22.5	
Northumberland	75.5	78.8	77.2	83.9	82.0	83.9	23.8	20.6	22.5	15.9	18.0	15.8	
Tyneside	80.7	80.6	77.9	80.4	81.1	82.3	19.1	19.3	21.9	19.5	18.8	17.5	
Sunderland	75.4	73.3	82.2	79.0	84.0	76.4	24.6	26.7	17.5	21.0	15.1	23.1	
North West	80.7	82.7	82.9	83.5	84.0	84.0	19.1	17.1	16.9	16.3	15.9	15.8	
West Cumbria	73.0	81.5	81.8	81.9	82.4	79.6	26.8	18.5	18.2	18.1	17.6	19.9	
East Cumbria	74.0	78.6	83.3	78.9	85.5	79.3	25.6	21.2	16.7	20.9	14.2	20.7	
Halton and Warrington	82.1	84.4	85.8	87.6	87.5	84.5	17.9	15.6	14.2	12.4	12.5	15.5	
Cheshire CC	84.8	88.6	84.3	83.9	87.3	86.8	14.7	11.1	15.4	16.0	12.4	13.2	
Greater Manchester South	83.3	86.2	86.0	83.8	83.2	84.2	16.5	13.7	13.8	15.8	16.7	15.7	
Greater Manchester North	81.6	82.8	83.4	83.6	84.5	84.2	18.2	17.2	16.5	16.2	15.4	15.6	
Blackburn with Darwen	84.1	86.5	79.5	78.1	79.6	80.0	15.9	13.5	20.5	21.9	20.4	18.8	
Blackpool	80.5	80.1	77.9	81.9	75.2	75.6	19.5	19.9	21.6	18.1	24.8	24.4	
Lancashire CC	82.7	79.7	82.1	83.8	83.8	85.8	17.1	20.2	17.6	15.6	16.1	13.9	
East Merseyside	77.5	83.4	81.2	81.9	83.1	84.4	22.5	16.1	18.1	17.8	16.3	15.4	
Liverpool	70.8	74.4	76.5	84.4	82.7	86.5	29.1	25.5	23.5	15.4	17.0	12.8	
Sefton	75.6	79.5	81.4	85.2	81.2	77.5	24.1	20.0	18.3	14.8	18.8	22.2	
Wirral	79.9	81.6	80.1	81.4	86.5	83.3	20.1	18.4	19.9	18.6	13.5	16.5	
Yorkshire and the Humber	81.0	81.6	82.7	82.2	82.3	83.4	18.8	18.1	17.1	17.6	17.6	16.5	
City of Kingston upon Hull	81.2	79.0	83.0	79.7	81.6	78.6	18.8	20.7	17.0	20.3	18.2	21.1	
East Riding of Yorkshire	80.7	81.9	79.8	81.4	77.6	85.8	19.3	18.1	20.0	18.3	22.2	14.2	
North and North East Lincolnshire	81.9	85.8	86.7	83.3	84.4	81.4	18.1	13.8	13.1	16.7	15.6	18.3	
York	87.5	79.1	85.0	91.3	81.0	91.5	12.5	20.9	15.0	8.7	19.0	8.5	
North Yorkshire CC	78.3	81.1	83.1	82.6	85.8	86.6	21.7	18.7	16.8	17.2	14.0	13.3	
Barnsley, Doncaster and Rotherham	81.0	80.8	79.7	79.3	80.1	80.1	18.6	19.0	20.3	20.6	19.8	19.7	
Sheffield	85.1	83.8	82.6	84.3	80.3	82.3	14.4	16.0	17.3	15.6	19.6	17.6	
Bradford	77.7	81.6	82.2	83.1	80.9	77.1	22.0	17.7	17.6	16.8	18.7	22.8	
Leeds	81.5	79.6	84.9	82.1	83.1	85.1	18.4	20.3	15.0	17.8	16.7	14.7	
Calderdale, Kirklees and Wakefield	80.0	82.9	82.7	81.6	84.6	86.0	19.8	16.5	17.1	18.2	15.4	14.0	
East Midlands	82.0	82.3	83.2	83.2	83.8	84.4	17.8	17.4	16.5	16.7	16.0	15.6	
Derby	79.6	79.6	80.7	77.8	91.0	80.7	20.4	20.4	19.3	22.2	9.0	18.9	
East Derbyshire	81.0	80.3	80.5	81.0	87.2	81.7	18.7	19.7	19.5	19.0	12.5	18.3	
South and West Derbyshire	83.5	83.4	84.7	86.2	81.6	87.0	16.3	16.4	15.1	13.6	18.0	12.9	
Nottingham	79.8	82.9	75.4	79.2	81.9	81.8	19.6	15.2	24.2	20.8	17.9	18.2	
North Nottinghamshire	77.8	81.8	81.6	81.6	77.6	83.8	21.7	17.7	18.3	18.3	22.2	16.1	
South Nottinghamshire	80.5	78.3	80.4	83.2	82.8	87.1	19.0	21.3	19.6	16.8	17.2	12.9	
Leicester	87.0	79.0	83.9	82.3	82.1	82.0	13.0	20.7	16.1	17.7	17.9	18.0	
Leicestershire CC and Rutland	86.3	83.7	84.4	84.7	83.4	85.0	13.5	16.1	15.1	15.3	16.2	14.9	
Northamptonshire	84.0	86.5	88.6	86.6	89.0	87.8	15.5	13.4	11.3	13.4	10.8	12.1	
Lincolnshire	78.0	81.3	83.6	82.7	83.4	82.1	22.0	18.7	15.9	17.3	16.6	17.8	
West Midlands	79.2	79.8	80.3	80.9	81.8	81.4	20.5	19.9	19.5	19.0	18.0	18.4	
County of Herefordshire	79.3	84.5	78.7	75.8	85.0	74.2	17.8	14.4	20.8	24.2	15.0	25.4	
Worcestershire	79.7	82.0	82.6	81.7	80.3	81.5	20.2	17.6	16.9	18.3	19.7	18.4	
Warwickshire	79.7	81.3	80.8	86.4	81.1	84.5	20.3	18.4	18.8	13.5	18.8	15.3	
Telford and Wrekin	85.3	87.4	85.4	79.7	78.8	87.2	14.7	12.6	14.6	19.8	20.3	12.3	
Shropshire CC	81.1	80.8	83.5	82.5	86.3	84.9	18.7	19.2	16.5	17.5	13.7	14.5	
Stoke-on-Trent	81.6	82.0	81.4	77.2	84.5	83.7	18.4	17.7	18.6	22.8	15.2	16.3	
Staffordshire CC	82.2	81.4	80.7	83.0	86.3	83.5	17.7	18.3	19.1	16.9	13.5	16.4	
Birmingham	75.7	79.2	79.3	79.4	81.3	79.5	23.7	20.4	20.2	20.0	18.5	20.0	
Solihull	79.9	84.8	92.1	88.6	89.5	89.9	20.1	15.2	7.9	11.4	10.3	9.9	
Coventry	76.5	78.6	78.7	80.2	78.6	76.1	23.4	21.2	21.1	19.5	21.4	23.5	
Dudley and Sandwell	79.5	77.7	79.7	82.1	81.3	84.4	20.1	21.9	20.2	17.8	18.6	15.6	
Walsall and Wolverhampton	76.6	69.8	71.5	71.7	73.1	71.9	23.2	30.2	28.5	28.3	26.7	28.1	
East of England	84.2	85.4	85.3	85.0	85.8	86.5	15.7	14.5	14.5	14.9	14.1	13.3	
Peterborough	84.3	84.3	81.8	86.9	82.0	84.2	15.3	14.9	17.8	11.7	18.0	15.8	
Cambridgeshire CC	83.9	85.3	89.2	86.2	87.8	89.7	16.1	14.4	10.4	13.5	12.2	10.2	
Norfolk	79.5	82.9	80.6	81.1	80.5	81.0	20.3	17.1	19.1	18.6	19.5	18.9	

Suffolk	81.6	85.9	82.2	82.4	85.8	81.9	18.2	14.0	17.7	17.6	14.1	18.1
Luton	79.9	83.3	79.4	79.7	86.4	83.9	19.6	16.7	20.6	20.3	13.6	15.7
Bedfordshire CC	90.9	84.8	87.1	90.3	87.7	91.2	9.1	15.0	12.9	9.5	12.1	8.6
Hertfordshire	86.2	88.9	87.4	86.3	85.7	90.0	13.8	11.1	12.5	13.6	14.3	10.0
Southend-on-Sea	82.6	84.6	86.5	87.9	86.2	89.3	17.4	15.4	13.5	12.1	13.8	9.9
Thurrock	86.1	86.5	84.0	80.0	88.7	82.1	13.9	13.5	16.0	20.0	11.3	17.4
Essex CC	85.7	84.5	87.2	86.2	88.0	87.7	14.2	15.2	12.7	13.7	12.0	12.2
London	85.9	85.9	86.7	86.5	87.6	88.1	13.9	13.8	13.0	13.2	12.1	11.7
Inner London - West	89.0	90.3	87.8	89.7	90.5	87.8	10.6	9.4	11.4	10.2	9.4	12.2
Inner London - East	84.4	86.1	87.8	86.9	88.7	89.3	15.2	13.3	11.8	12.7	10.9	10.3
Outer London - East and North East	83.1	84.9	85.0	83.4	82.6	87.1	16.8	14.9	14.7	16.3	16.8	12.7
Outer London - South	86.1	86.2	88.5	88.4	89.4	86.2	13.8	13.3	11.4	11.3	10.2	13.7
Outer London - West and North West	88.0	83.5	85.0	85.7	87.9	89.3	11.9	16.4	14.8	14.2	12.0	10.4
South East	85.9	86.4	86.6	86.9	87.6	87.9	13.8	13.3	13.3	12.9	12.2	11.9
Berkshire	88.5	88.1	88.4	90.3	90.5	90.1	11.2	11.5	11.3	9.6	9.4	9.9
Milton Keynes	90.6	89.3	93.5	91.2	92.7	89.8	9.4	10.7	6.5	8.8	7.3	10.2
Buckinghamshire CC	89.0	89.3	87.8	91.2	90.9	90.1	10.7	10.0	11.9	8.2	8.9	9.2
Oxfordshire	86.1	87.4	84.9	89.1	89.6	91.4	13.8	12.6	15.1	10.8	9.9	8.5
Brighton and Hove	91.7	92.8	93.2	88.6	89.0	94.4	8.0	7.2	6.8	11.4	11.0	5.6
East Sussex CC	86.2	82.2	78.9	83.4	83.7	82.4	13.8	17.8	20.8	16.6	16.0	17.4
Surrey	87.7	85.7	87.9	87.3	90.1	91.7	12.1	14.0	12.1	12.7	9.8	8.3
West Sussex	81.8	86.2	85.2	82.8	86.9	86.7	18.1	13.3	14.6	17.2	12.9	13.3
Portsmouth	83.8	90.4	93.1	84.7	89.6	89.3	16.2	8.2	6.9	14.9	10.4	10.2
Southampton	89.2	87.6	84.2	85.8	90.3	86.3	10.8	12.4	15.8	14.2	9.0	13.3
Hampshire CC	86.4	86.1	86.5	87.9	86.2	88.2	13.2	13.7	13.3	11.9	13.7	11.7
Isle of Wight	80.7	73.6	83.6	79.4	85.6	81.9	19.3	26.4	16.4	20.6	14.4	18.1
Medway	76.9	80.1	82.3	82.8	79.6	88.7	23.1	19.9	17.7	16.9	20.1	11.3
Kent CC	83.8	86.5	86.6	86.0	84.6	83.0	15.8	13.4	13.2	14.0	15.2	16.8
South West	83.5	84.1	85.0	85.1	84.9	85.6	16.2	15.7	14.7	14.8	15.0	14.2
City of Bristol	84.6	85.2	88.0	86.2	85.5	86.5	15.1	14.6	11.8	13.6	14.2	13.0
North and North East Somerset, South Gloucestershire	81.7	86.2	88.7	86.7	85.3	89.0	18.0	13.8	11.3	13.3	14.6	10.7
Gloucestershire	81.5	79.6	81.4	85.9	84.5	85.7	18.2	20.1	18.2	14.0	15.5	14.2
Swindon	83.3	90.5	89.6	86.0	87.6	81.5	16.7	9.5	10.4	14.0	12.1	17.2
Wiltshire CC	87.5	90.6	87.0	86.6	87.5	89.2	12.0	9.2	12.8	13.3	12.2	10.7
Bournemouth and Poole	85.1	84.0	85.5	85.8	83.7	85.7	14.6	15.6	14.3	14.2	15.8	13.9
Dorset CC	83.7	81.5	84.8	85.2	83.0	84.9	16.0	18.5	14.0	14.8	17.0	15.1
Somerset	81.2	83.1	82.9	83.3	86.0	85.6	18.5	16.3	16.7	16.7	13.7	14.2
Cornwall and Isles of Scilly	79.1	78.5	83.4	82.0	81.1	82.6	20.7	21.5	16.6	17.9	18.9	17.2
Plymouth	86.8	87.0	82.1	84.6	81.6	90.3	13.2	12.7	17.9	15.4	18.4	9.7
Torbay	79.8	84.6	79.9	86.9	90.7	86.1	20.2	15.4	20.1	13.1	9.3	13.9
Devon CC	87.4	84.6	85.0	84.5	85.6	82.1	12.2	14.9	14.9	15.4	14.4	17.8
Wales	80.2	79.8	80.2	81.1	80.7	81.7	19.6	19.8	19.7	18.7	19.2	18.2
Isle of Anglesey	77.2	77.0	74.6	77.7	76.1	82.9	22.8	23.0	25.4	22.3	23.9	17.1
Gwynedd	86.4	79.7	78.5	74.1	85.2	84.5	13.6	20.3	21.5	25.9	14.8	15.5
Conwy and Denbighshire	74.0	79.5	77.9	80.3	82.9	87.7	26.0	20.5	21.8	19.4	16.8	12.3
South West Wales	82.8	80.3	80.8	79.3	73.0	75.1	17.2	19.5	19.2	20.5	26.8	24.1
Central Valleys	79.5	71.2	76.8	83.7	73.0	74.9	19.9	28.5	23.2	16.3	27.0	25.1
Gwent Valleys	74.5	78.4	80.7	84.5	79.2	80.2	24.9	21.6	19.3	15.2	20.4	19.6
Bridgend and Neath Port Talbot	77.5	72.4	77.1	81.1	84.0	84.6	22.3	26.0	22.9	18.3	15.8	15.4
Swansea	78.7	79.8	71.7	79.7	81.0	80.8	20.7	19.5	28.3	20.3	19.0	19.2
Monmouthshire and Newport	77.2	87.0	85.9	79.1	87.0	88.7	22.2	13.0	14.1	20.6	12.7	11.3
Cardiff and Vale of Glamorgan	90.0	86.3	85.7	85.0	85.0	88.4	9.8	13.2	14.0	14.8	15.0	11.6
Flintshire and Wrexham	76.9	79.8	84.2	83.2	82.7	77.4	22.8	19.7	15.5	16.8	16.9	22.2
Powys	79.9	83.6	77.2	70.4	80.1	74.8	20.1	16.4	22.8	29.6	19.9	25.2
Scotland	81.1	81.5	82.0	82.6	83.1	84.1	18.8	18.2	17.8	17.2	16.6	15.8
Angus and Dundee City	79.0	86.9	79.6	82.9	79.0	84.6	20.8	13.0	20.4	16.9	21.0	15.4
Clackmannanshire and Fife	83.3	85.6	86.6	82.7	88.1	89.4	16.7	14.2	13.2	17.1	11.6	10.6
East Lothian and Midlothian	82.9	78.2	85.8	90.7	88.7	83.4	16.8	21.8	13.8	9.3	11.3	16.6
The Scot Borders	81.7	77.3	84.4	78.0	79.0	83.3	18.3	22.7	15.6	22.0	21.0	16.7
City of Edinburgh	86.0	87.9	87.4	87.9	86.9	84.3	14.0	11.6	12.6	11.9	13.1	15.6
Falkirk	79.4	81.6	79.2	81.2	83.7	86.3	20.6	18.4	20.2	17.9	15.5	13.7
Perth and Kinross and Stirling	87.7	87.4	82.5	79.8	82.1	81.1	12.3	12.6	17.2	20.2	17.7	18.9
West Lothian	84.9	76.6	85.2	81.5	81.1	89.9	15.1	23.4	14.8	18.5	18.9	10.1
East and West Dunbartonshire												
Helensburgh	84.7	81.8	84.3	89.7	85.4	81.9	15.3	17.4	15.3	10.3	14.6	18.1
Dumfries and Galloway	74.3	71.9	73.5	78.8	77.9	79.9	23.5	27.1	26.5	21.2	19.9	20.1
East Ayrshire and North Ayrshire												
Mainland	77.3	75.0	76.1	80.1	77.6	82.4	22.7	25.0	23.6	19.6	22.1	17.2

Glasgow City	75.8	77.8	77.3	82.0	79.2	77.6	24.0	21.6	22.7	18.0	20.6	22.3
Inverclyde, East Renfrewshire and Renfrewshire	79.0	84.6	83.7	80.4	81.1	82.3	20.7	15.2	16.1	19.4	18.7	17.7
North Lanarkshire	76.4	79.5	80.2	76.2	79.2	80.1	23.1	20.3	19.4	23.5	20.2	19.0
South Ayrshire	76.4	78.9	73.6	80.3	81.2	85.2	23.6	20.3	26.4	19.7	18.8	14.8
South Lanarkshire	77.7	76.9	78.7	77.4	82.7	86.1	22.3	23.1	21.3	22.6	17.3	13.9
Aberdeen City and Aberdeenshire	82.7	82.7	83.1	86.0	91.6	90.6	17.2	16.9	16.4	13.8	8.4	9.2
Highlands and Islands	86.2	82.5	85.2	83.2	82.0	84.5	13.8	17.2	14.6	15.8	17.6	15.3
Northern Ireland	72.7	72.4	74.3	75.1	77.5	77.4	26.7	27.2	25.4	24.5	22.3	22.4

Percentages sum to less than 100 due to "don't know" responses.

Source: Office for National Statistics

Table 4C: Internet non users: 95% confidence intervals, 2012 Q3

thousands

	Never used the Internet				Never used the Internet		
	Lower limit	Survey estimate	Upper limit		Lower limit	Survey estimate	Upper limit
UK	7,607	7,630	7,653				
North East	413	420	427	London	733	739	745
Hartlepool and Stockton-on-Tees	56	59	62	Inner London - West	109	112	115
South Teesside	38	40	42	Inner London - East	164	167	170
Darlington	10	11	12	Outer London - East and North East	164	167	170
Durham CC	89	93	97	Outer London - South	135	138	141
Northumberland	38	40	42	Outer London - West and North West	153	156	159
Tyneside	119	122	125				
Sunderland	51	54	57	South East	818	824	830
				Berkshire	67	69	71
North West	873	881	889	Milton Keynes	19	20	21
West Cumbria	36	38	40	Buckinghamshire CC	36	37	38
East Cumbria	41	43	45	Oxfordshire	43	44	45
Halton and Warrington	37	39	41	Brighton and Hove	12	12	12
Cheshire CC	71	73	75	East Sussex CC	70	73	76
Greater Manchester South	179	183	187	Surrey	75	76	77
Greater Manchester North	146	149	152	West Sussex	86	88	90
Blackburn with Darwen	19	21	23	Portsmouth	15	16	17
Blackpool	24	26	28	Southampton	26	27	28
Lancashire CC	128	131	134	Hampshire CC	122	124	126
East Merseyside	38	40	42	Isle of Wight	19	20	21
Liverpool	44	46	48	Medway	22	23	24
Sefton	48	51	54	Kent CC	192	196	200
Wirral	39	41	43				
				South West	605	611	617
Yorkshire and the Humber	706	713	720	Bristol, City of	43	45	47
Kingston upon Hull, City of	43	45	47	North and North East Somerset, South Gloucestershire	56	57	58
East Riding of Yorkshire	38	40	42	Gloucestershire	67	69	71
North and North East Lincolnshire	45	47	49	Swindon	28	30	32
York	13	14	15	Wiltshire CC	39	40	41
North Yorkshire CC	63	65	67	Bournemouth and Poole	34	35	36
Barnsley, Doncaster and Rotherham	122	126	130	Dorset	50	52	54
Sheffield	79	82	85	Somerset	59	61	63
Bradford	87	91	95	Cornwall and Isles of Scilly	76	79	82
Leeds	94	96	98	Plymouth	19	20	21
Calderdale, Kirklees and Wakefield	103	105	107	Torbay	13	14	15
				Devon CC	105	108	111
East Midlands	561	567	573	Wales	440	447	454
Derby	37	39	41	Isle of Anglesey	9	10	11
East Derbyshire	40	42	44	Gwynedd	14	15	16
South and West Derbyshire	48	50	52	Conwy and Denbighshire	20	21	22
Nottingham	43	45	47	South West Wales	69	72	75
North Nottinghamshire	58	60	62	Central Valleys	55	58	61
South Nottinghamshire	35	36	37	Gwent Valleys	52	54	56
Leicester	41	43	45	Bridgend and Neath Port Talbot	32	34	36
Leicestershire CC and Rutland	81	83	85	Swansea	35	37	39
Northamptonshire	65	67	69	Monmouthshire and Newport	20	21	22
Lincolnshire	99	102	105	Cardiff and Vale of Glamorgan	43	44	45
				Flintshire and Wrexham	50	53	56
West Midlands	793	802	811	Powys	26	28	30
Herefordshire, County of	35	38	41				
Worcestershire	80	83	86	Scotland	668	675	682
Warwickshire	63	65	67	Angus and Dundee City	31	33	35
Telford and Wrekin	15	16	17	Clackmannanshire and Fife	34	35	36
Shropshire CC	35	37	39	East Lothian and Midlothian	23	24	25
Stoke-on-Trent	30	32	34	The Scottish Borders	14	15	16
Staffordshire CC	105	108	111	Edinburgh, City of	62	64	66
Birmingham	159	163	167	Falkirk	16	17	18
Solihull	16	17	18	Perth and Kinross and Stirling	35	37	39
Coventry	56	59	62	West Lothian	13	14	15
Dudley and Sandwell	72	74	76	East and West Dunbartonshire, Helensburgh	32	34	36
Walsall and Wolverhampton	106	111	116	Dumfries and Galloway	23	25	27
				East Ayrshire and North Ayrshire Mainland	32	34	36
East of England	629	635	641	Glasgow City	104	108	112
Peterborough	20	21	22	Inverclyde, East Renfrewshire and Renfrewshire	47	49	51
Cambridgeshire CC	50	51	52	North Lanarkshire	48	50	52
Norfolk	133	137	141	South Ayrshire	13	14	15
Suffolk	104	107	110	South Lanarkshire	34	35	36
Luton	24	25	26	Aberdeen City and Aberdeenshire	40	41	42
Bedfordshire CC	29	30	31	Highlands & Islands	45	47	49
Hertfordshire	89	91	93				
Southend-on-Sea	11	12	13	Northern Ireland	311	317	323
Thurrock	20	21	22				
Essex CC	137	140	143				

Source: Office for National Statistics


Table 4D: Internet non users: 95% confidence intervals, 2012 Q3

	Never used the Internet				Never used the Internet			%
	Lower limit	Survey estimate	Upper limit		Lower limit	Survey estimate	Upper limit	
UK	14.8	15.1	15.4					
North East	18.0	19.6	21.2	London	10.8	11.7	12.6	
Hartlepool and Stockton-on-Tees	19.7	25.2	30.7	Inner London - West	9.7	12.2	14.7	
South Teesside	13.2	18.3	23.4	Inner London - East	8.7	10.3	11.9	
Darlington	6.1	12.8	19.5	Outer London - East and North East	10.8	12.7	14.6	
Durham CC	18.7	22.5	26.3	Outer London - South	11.5	13.7	15.9	
Northumberland	11.7	15.8	19.9	Outer London - West and North West	8.8	10.4	12.0	
Tyneside	14.8	17.5	20.2					
Sunderland	18.1	23.1	28.1	South East	11.2	11.9	12.6	
				Berkshire	7.7	9.9	12.1	
North West	14.9	15.8	16.7	Milton Keynes	6.1	10.2	14.3	
West Cumbria	14.7	19.9	25.1	Buckinghamshire CC	6.6	9.2	11.8	
East Cumbria	15.6	20.7	25.8	Oxfordshire	6.2	8.5	10.8	
Halton and Warrington	11.4	15.5	19.6	Brighton and Hove	2.2	5.6	9.0	
Cheshire CC	10.5	13.2	15.9	East Sussex CC	13.9	17.4	20.9	
Greater Manchester South	13.6	15.7	17.8	Surrey	6.6	8.3	10.0	
Greater Manchester North	13.4	15.6	17.8	West Sussex	10.7	13.3	15.9	
Blackburn with Darwen	11.4	18.8	26.2	Portsmouth	5.3	10.2	15.1	
Blackpool	16.5	24.4	32.3	Southampton	8.4	13.3	18.2	
Lancashire CC	11.8	13.9	16.0	Hampshire CC	9.9	11.7	13.5	
East Merseyside	11.1	15.4	19.7	Isle of Wight	11.2	18.1	25.0	
Liverpool	9.3	12.8	16.3	Medway	7.1	11.3	15.5	
Sefton	16.9	22.2	27.5	Kent CC	14.7	16.8	18.9	
Wirral	12.1	16.5	20.9					
				South West	13.2	14.2	15.2	
Yorkshire and the Humber	15.5	16.5	17.5	Bristol, City of	9.2	13.0	16.8	
Kingston upon Hull, City of	15.8	21.1	26.4	North and North East Somerset, South Gloucestershire	8.2	10.7	13.2	
East Riding of Yorkshire	10.3	14.2	18.1	Gloucestershire	11.3	14.2	17.1	
North and North East Lincolnshire	14.0	18.3	22.6	Swindon	11.4	17.2	23.0	
York	4.5	8.5	12.5	Wiltshire CC	7.9	10.7	13.5	
North Yorkshire CC	10.6	13.3	16.0	Bournemouth and Poole	9.9	13.9	17.9	
Barnsley, Doncaster and Rotherham	16.8	19.7	22.6	Dorset CC	11.4	15.1	18.8	
Sheffield	14.2	17.6	21.0	Somerset	11.1	14.2	17.3	
Bradford	18.9	22.8	26.7	Cornwall and Isles of Scilly	13.9	17.2	20.5	
Leeds	12.1	14.7	17.3	Plymouth	5.7	9.7	13.7	
Calderdale, Kirklees and Wakefield	11.7	14.0	16.3	Torbay	7.5	13.9	20.3	
				Devon CC	14.9	17.8	20.7	
East Midlands	14.5	15.6	16.7					
Derby	13.2	18.9	24.6	Wales	16.7	18.2	19.7	
East Derbyshire	13.3	18.3	23.3	Isle of Anglesey	7.2	17.1	27.0	
South and West Derbyshire	9.7	12.9	16.1	Gwynedd	9.0	15.5	22.0	
Nottingham	13.0	18.2	23.4	Conwy and Denbighshire	7.6	12.3	17.0	
North Nottinghamshire	12.6	16.1	19.6	South West Wales	19.5	24.1	28.7	
South Nottinghamshire	9.0	12.9	16.8	Central Valleys	19.4	25.1	30.8	
Leicester	13.4	18.0	22.6	Gwent Valleys	15.3	19.6	23.9	
Leicestershire CC and Rutland	12.1	14.9	17.7	Bridgend and Neath Port Talbot	10.9	15.4	19.9	
Northamptonshire	9.5	12.1	14.7	Swansea	13.6	19.2	24.8	
Lincolnshire	15.0	17.8	20.6	Monmouthshire and Newport	7.3	11.3	15.3	
				Cardiff and Vale of Glamorgan	8.5	11.6	14.7	
West Midlands	17.3	18.4	19.5	Flintshire and Wrexham	16.9	22.2	27.5	
Herefordshire, County of	18.7	25.4	32.1	Powys	17.4	25.2	33.0	
Worcestershire	15.1	18.4	21.7					
Warwickshire	12.0	15.3	18.6	Scotland	14.7	15.8	16.9	
Telford and Wrekin	6.9	12.3	17.7	Angus and Dundee City	10.6	15.4	20.2	
Shropshire CC	10.4	14.5	18.6	Clackmannanshire and Fife	7.4	10.6	13.8	
Stoke-on-Trent	10.7	16.3	21.9	East Lothian and Midlothian	10.4	16.6	22.8	
Staffordshire CC	13.7	16.4	19.1	The Scottish Borders	10.1	16.7	23.3	
Birmingham	17.3	20.0	22.7	Edinburgh, City of	11.9	15.6	19.3	
Solihull	5.8	9.9	14.0	Falkirk	8.5	13.7	18.9	
Coventry	18.1	23.5	28.9	Perth and Kinross and Stirling	13.7	18.9	24.1	
Dudley and Sandwell	12.5	15.6	18.7	West Lothian	5.5	10.1	14.7	
Walsall and Wolverhampton	23.3	28.1	32.9	East and West Dunbartonshire, Helensburgh	12.2	18.1	24.0	
				Dumfries and Galloway	12.7	20.1	27.5	
East of England	12.4	13.3	14.2	East Ayrshire and North Ayrshire Mainland	12.5	17.2	21.9	
Peterborough	9.9	15.8	21.7	Glasgow City	18.4	22.3	26.2	
Cambridgeshire CC	7.8	10.2	12.6	Inverclyde, East Renfrewshire and Renfrewshire	13.5	17.7	21.9	
Norfolk	16.2	18.9	21.6	North Lanarkshire	14.6	19.0	23.4	
Suffolk	15.3	18.1	20.9	South Ayrshire	7.8	14.8	21.8	
Luton	9.8	15.7	21.6	South Lanarkshire	9.8	13.9	18.0	
Bedfordshire CC	5.7	8.6	11.5	Aberdeen City and Aberdeenshire	6.7	9.2	11.7	
Hertfordshire	8.1	10.0	11.9	Highlands & Islands	11.0	15.3	19.6	
Southend-on-Sea	4.8	9.9	15.0					
Thurrock	10.5	17.4	24.3	Northern Ireland	20.7	22.4	24.1	
Essex CC	10.3	12.2	14.1					

Table 5A: Internet users and non-users, by gross weekly pay, UK

Persons aged 16 years and over

thousands



	Ever used						Never used					
	2011 Q2	2011 Q3	2011 Q4	2012 Q1	2012 Q2	2012 Q3	2011 Q2	2011 Q3	2011 Q4	2012 Q1	2012 Q2	2012 Q3
Pay band												
<£200	5,034	4,864	4,987	4,927	5,056	5,050	511	440	438	367	355	358
£200-£299	3,699	3,799	3,626	3,747	3,553	3,656	299	209	269	209	190	212
£300-£399	3,766	3,784	3,788	3,860	3,939	3,725	186	182	177	198	170	168
£400-£499	3,062	3,110	3,074	3,089	2,950	3,057	105	102	96	66	78	95
£500-£599	2,443	2,401	2,474	2,359	2,541	2,505	63	46	34	20	34	44
£600-£699	1,804	1,768	1,750	1,786	1,841	1,809	33	15	22	21	40	25
£700-£799	1,121	1,105	1,100	1,079	1,124	1,188	8	7	3	2	7	3
£800-£899	888	942	912	995	914	991	7	11	0	7	10	9
£900-£999	470	500	634	613	576	602	7	4	3	0	0	2
£1000-£1499	888	1,041	987	934	998	1,075	0	0	2	0	2	2
£1500-£1999	482	443	440	395	513	552	0	0	0	2	0	0
£2000+	106	92	68	72	57	45	0	0	0	0	0	0

Base: UK adults in paid employment.

Those in self employment are excluded from this analysis.

Source: Office for National Statistics

Table 5B: Internet users and non-users, by gross weekly pay, UK

Persons aged 16 years and over

%

	Ever used						Never used					
	2011 Q2	2011 Q3	2011 Q4	2012 Q1	2012 Q2	2012 Q3	2011 Q2	2011 Q3	2011 Q4	2012 Q1	2012 Q2	2012 Q3
Pay band												
<£200	90.8	91.7	91.9	92.9	93.3	93.3	9.2	8.3	8.1	6.9	6.5	6.6
£200-£299	92.4	94.6	93.0	94.6	94.8	94.3	7.5	5.2	6.9	5.3	5.1	5.5
£300-£399	95.1	95.3	95.4	94.8	95.8	95.5	4.7	4.6	4.5	4.9	4.1	4.3
£400-£499	96.4	96.7	96.9	97.9	97.2	96.8	3.3	3.2	3.0	2.1	2.6	3.0
£500-£599	97.5	98.1	98.6	99.2	98.5	98.3	2.5	1.9	1.4	0.8	1.3	1.7
£600-£699	98.1	99.2	98.7	98.7	97.9	98.3	1.8	0.8	1.3	1.2	2.1	1.4
£700-£799	99.3	99.3	99.4	99.6	99.4	99.6	0.7	0.7	0.3	0.2	0.6	0.3
£800-£899	99.0	98.7	100.0	99.0	98.8	99.1	0.8	1.1	0.0	0.7	1.0	0.9
£900-£999	98.6	99.3	99.5	98.8	100.0	99.3	1.4	0.7	0.5	0.0	0.0	0.3
£1000-£1499	100.0	100.0	99.8	100.0	99.7	99.8	0.0	0.0	0.2	0.0	0.2	0.2
£1500-£1999	99.6	99.0	100.0	99.4	100.0	99.8	0.0	0.0	0.0	0.6	0.0	0.2
£2000+	100.0	100.0	100.0	100.0	100.0	100.0	0.0	0.0	0.0	0.0	0.0	0.0

Base: UK adults in paid employment.

Those in self employment are excluded from this analysis.

Percentages sum to less than 100 due to "don't know" responses.

Source: Office for National Statistics

Table 6A: Recent and lapsed Internet users, UK

Persons aged 16 years and over

thousands

	Used in the last 3 months						Used over 3 months ago					
	2011 Q2	2011 Q3	2011 Q4	2012 Q1	2012 Q2	2012 Q3	2011 Q2	2011 Q3	2011 Q4	2012 Q1	2012 Q2	2012 Q3
All adults	39,840	40,142	40,574	40,764	41,144	41,462	1,417	1,479	1,413	1,392	1,373	1,329
Age group (years)												
16-24	7,109	7,084	7,092	7,088	7,110	7,062	77	80	84	74	58	65
25-34	7,959	8,010	8,090	8,162	8,255	8,303	132	139	133	135	107	102
35-44	8,040	8,024	8,012	7,986	7,963	7,939	186	175	161	152	158	156
45-54	7,500	7,562	7,625	7,694	7,824	7,912	276	269	267	255	230	214
55-64	5,466	5,506	5,579	5,624	5,651	5,723	302	306	294	282	294	276
65-74	2,848	2,940	3,022	3,153	3,240	3,324	284	276	295	287	300	311
75+	917	1,017	1,155	1,057	1,101	1,199	160	233	179	207	226	206
Sex												
Male	20,077	20,235	20,495	20,564	20,745	20,876	635	682	654	648	617	600
Female	19,762	19,907	20,079	20,200	20,399	20,586	782	796	758	744	756	730
Legal marital status												
Single or never married / civil partnership	15,302	15,355	15,384	15,511	15,621	15,625	354	361	336	347	319	330
Married / civil partnership	19,578	19,669	20,061	20,053	20,162	20,495	649	702	670	653	640	589
Separated / separated civil partner	1,031	1,090	1,088	1,085	1,135	1,103	62	80	72	56	56	55
Divorced / former civil partner	3,006	3,022	3,017	3,117	3,134	3,122	208	182	201	194	189	176
Widowed / surviving civil partner	923	1,006	1,025	998	1,092	1,117	144	153	134	142	169	180
Disability												
DDA disabled ¹	6,708	6,846	6,955	7,011	7,078	7,129	552	566	566	588	585	582
Work limiting disability only	1,134	1,188	1,202	1,182	1,229	1,229	46	48	39	38	42	36
No disability ²	31,998	32,108	32,417	32,571	32,837	33,103	819	865	808	767	746	712

Discrepancies may occur between totals and the sum of their independently rounded components.

Source: Office for National Statistics

1 DDA disabled refers to those who self-assess that they have a disability in line with the Disability Discrimination Act (DDA) definition of disability.

2 A small number of respondents who chose not to declare whether they had a disability have been included within the category 'No disability'.

Table 6B: Recent and lapsed Internet users, UK

Persons aged 16 years and over

%

	Used in the last 3 months						Used over 3 months ago					
	2011 Q2	2011 Q3	2011 Q4	2012 Q1	2012 Q2	2012 Q3	2011 Q2	2011 Q3	2011 Q4	2012 Q1	2012 Q2	2012 Q3
All adults	96.6	96.4	96.6	96.7	96.8	96.9	3.4	3.6	3.4	3.3	3.2	3.1
Age group (years)												
16-24	98.9	98.9	98.8	99.0	99.2	99.1	1.1	1.1	1.2	1.0	0.8	0.9
25-34	98.4	98.3	98.4	98.4	98.7	98.8	1.6	1.7	1.6	1.6	1.3	1.2
35-44	97.7	97.9	98.0	98.1	98.1	98.1	2.3	2.1	2.0	1.9	1.9	1.9
45-54	96.5	96.6	96.6	96.8	97.1	97.4	3.5	3.4	3.4	3.2	2.9	2.6
55-64	94.8	94.7	95.0	95.2	95.1	95.4	5.2	5.3	5.0	4.8	4.9	4.6
65-74	90.9	91.4	91.1	91.7	91.5	91.5	9.1	8.6	8.9	8.3	8.5	8.5
75+	85.1	81.3	86.6	83.6	83.0	85.3	14.9	18.7	13.4	16.4	17.0	14.7
Sex												
Male	96.9	96.7	96.9	96.9	97.1	97.2	3.1	3.3	3.1	3.1	2.9	2.8
Female	96.2	96.2	96.4	96.4	96.4	96.6	3.8	3.8	3.6	3.6	3.6	3.4
Legal marital status												
Single or never married / civil partnership	97.7	97.7	97.9	97.8	98.0	97.9	2.3	2.3	2.1	2.2	2.0	2.1
Married / civil partnership	96.8	96.6	96.8	96.8	96.9	97.2	3.2	3.4	3.2	3.2	3.1	2.8
Separated / separated civil partner	94.3	93.2	93.8	95.1	95.3	95.2	5.7	6.8	6.2	4.9	4.7	4.8
Divorced / former civil partner	93.5	94.3	93.7	94.1	94.3	94.7	6.5	5.7	6.3	5.9	5.7	5.3
Widowed / surviving civil partner	86.5	86.8	88.4	87.6	86.6	86.2	13.5	13.2	11.6	12.4	13.4	13.8
Disability												
DDA disabled ¹	92.4	92.4	92.5	92.3	92.4	92.5	7.6	7.6	7.5	7.7	7.6	7.5
Work limiting disability only	96.1	96.1	96.9	96.9	96.7	97.2	3.9	3.9	3.1	3.1	3.3	2.8
No disability ²	97.5	97.4	97.6	97.7	97.8	97.9	2.5	2.6	2.4	2.3	2.2	2.1

Source: Office for National Statistics

1 DDA disabled refers to those who self-assess that they have a disability in line with the Disability Discrimination Act (DDA) definition of disability.

2 A small number of respondents who chose not to declare whether they had a disability have been included within the category 'No disability'.