

# Intimate Personal Violence split sample experiment CSEW 2012/13

---

February 2015

## Table of Contents

<b>Background</b> .....	<b>3</b>
Review of IPV questions.....	3
Difference in questions .....	4
The split samples .....	7
Published estimates .....	8
<b>Results</b> .....	<b>8</b>
Summary.....	9
Split sample results in detail .....	11
Non-sexual partner abuse.....	12
Non-sexual family abuse.....	13
Sexual assault .....	14
Stalking.....	15
Other survey effects .....	16
Adjustment .....	17

## Figures and Tables

Table 1.1: Number of respondents asked the IPV module for each version of the sample.....	4
Figure 1: Summary of differences between the original and new IPV questions .....	6
Table 1.2: Sex and age profile of the two sub-samples in the IPV split-sample experiment, 2013/13 CSEW.....	8
Table 2.1: Direction and significance observed in the IPV split-sample experiment, 2012/13 CSEW .....	10
Figure 2.1 Prevalence of intimate violence experienced by headline category, 2012/13 CSEW	12
Figure 2.2 Prevalence of non-sexual partner abuse, 2012/13 CSEW .....	13
Figure 2.3 Prevalence of non-sexual family abuse, 2012/13 CSEW .....	14
Figure 2.4 Prevalence of sexual assault, 2012/13 CSEW .....	15
Figure 2.5 Prevalence of stalking, 2012/13 CSEW .....	16

## Background

The Crime Survey for England and Wales (CSEW) includes a self-completion module on Intimate Personal Violence (IPV) which asks about the respondent's experience of domestic abuse, sexual assault and stalking (for definitions, see 'Results' section below). Estimates and analysis from the IPV module are published once a year in the 'Focus on Violent Crime and Sexual Offences' publication. A split sample experiment was conducted for the IPV module which was prompted by concerns that the explicit nature of the questions was impacting later response rates. This paper presents the results of analysis of this split sample experiment for the 2012/13 CSEW.

The IPV module was included in the CSEW in 2001, and then on a continuous basis since the 2004/05 survey. The module is restricted to respondents aged 16 to 59 who enter their responses onto the interviewer's laptop themselves to allow for greater privacy when responding to such sensitive questions.

Estimates for domestic violence (a narrower definition than domestic abuse<sup>1</sup>) are available from the CSEW face-to-face module; however, this crime type is particularly liable to under-reporting in face-to-face interviews. For example, of those who reported being victims of physical domestic abuse (aged between 16 and 59) in the 2012/13 self-completion module, only 13% reported being a victim of domestic violence in the last 12 months in face-to-face interviews. This shows that the increased privacy of the IPV self-completion module leads to a greater level of disclosure by respondents.

## Review of IPV questions

A review of the CSEW questionnaire is carried out every year to address any methodological concerns and ensure that the survey is kept up-to-date with user and policy needs. A split sample experiment was introduced for the IPV module while the CSEW was being managed by the Home Office<sup>2</sup>. The review of the IPV questions was prompted by the extension of the survey to cover 10 to 15 year olds in 2009. Anecdotal feedback from interviewers suggested that the explicit nature of the IPV questions which are asked at the end of the core adult survey, just before the interviewer seeks parental permission to carry out the child survey, may have led to a higher than anticipated parental refusal rate (Campbell-Hall et al., 2010).

Although the IPV module is not asked of those aged 10 to 15, it is possible that parents were concerned about their children being asked questions of a similarly sensitive nature. In addition, the explicit nature of some of the language used in the existing questions in the IPV module does lead to a small number of complaints from respondents.

The survey contractor, TNS-BMRB, was commissioned to carry out a review of the existing questions and to design and test an alternative set to address the above concerns. The research consisted of 20 interviews comprising a mix of cognitive and in-depth questions with respondents who had previously taken part in the survey. This found that in comparison with the original set of questions, the alternative version had a number of advantages, including a simpler layout and less

---

<sup>1</sup> The self completion definition of domestic abuse is broader than the face-to-face domestic violence definition as it includes emotional or financial abuse or threats to hurt the respondent or someone close to them.

<sup>2</sup> The management of the survey transferred to ONS in April 2012 while the experiment was still running.

explicit wording, which respondents said may have caused offence or distress (Campbell-Hall et al., 2010).

After some further work on the questions, the principal recommendation from TNS-BMRB was that a split-sample experiment be carried out in which one half of respondents, selected at random, were asked the original IPV question set and one half were asked an alternative set of questions (referred to in this report as the first iteration of new questions). This split sample experiment started in the 2010/11 survey.

As managers of the survey at the time, statisticians in the Home Office analysed the results from the two sets of questions for the 2010/11 survey (Hall and Smith, 2011); that is, comparing the original questions with the first iteration of new questions. The Home Office ran a 13-week consultation alongside the publication of the split sample statistics and published a summary of the responses and resulting decisions (Home Office Statistics, 2012).

The Home Office analysis and user responses to the consultation identified a problem<sup>3</sup> with the first iteration of new questions which were addressed on the 2012/13 survey (referred to in this report as the new questions). These questions were adopted for the full sample in the 2013/14 survey. The number of respondents who completed each set of questions is shown in Table 1.1. This paper presents analysis conducted by ONS comparing the original questions with the new questions for the 2012/13 survey.

**Table 1.1: Number of respondents asked the IPV module for each version of the sample<sup>1</sup>**

England and Wales	Adults aged 16 to 59				
	2009/10	2010/11	2011/12	2012/13	2013/14
Original questions	22,998	11,671	11,667	10,550	
First iteration of new questions		11,941	11,713		
New questions				9,881	21,355
Percentage answering original	100	49	50	52	0

1. Source: *Crime Survey for England and Wales, Office for National Statistics*

## Differences in questions

A summary of the main differences in the questions can be found in Figure 1 and some question examples are in Appendix 1. The descriptions of types of abuse that respondents are asked about have been kept as consistent as possible between the original and new sets of questions<sup>4</sup>, and the order in which each type of abuse is asked about has also been retained.

In the original question set respondents were presented with a list of behaviours that constitute abuse and asked to choose which, if any, they had experienced since the age of 16 and in the last

<sup>3</sup> The problem with the first iteration of new questions was a decrease in the number of people reporting serious sexual assault. For more information see 'Differences in questions' section.

<sup>4</sup> The one exception is stalking where the definition has been deliberately changed to reflect the legal definition.

year. In the new question set, respondents are asked if they had experienced each of these behaviours in turn and asked to respond 'yes' or 'no'. The new question set is therefore simpler for respondents to answer as only a single response is needed and there is less information included in each question. This is preferable in self-completion questionnaires when the ideal is for interviewers not to be involved so respondents do not have an interviewer to help them understand the question.

As mentioned above, a concern with the original question set was that some respondents may be offended by the explicit questions on serious sexual assault. This was thought to lead to a lower 10 to 15 survey response rate as the position of the IPV questions is immediately before the interviewer seeks parental permission to carry out the child survey. To counter this, a screener question was included in the first iteration of new questions. This meant that only respondents who said they had experienced serious sexual assault were asked the most explicit questions used to determine the nature of the offence.

However, analysis from the 2010/11 split sample experiment (Hall and Smith, 2011) found little difference between the two sets of questions in their effect on the 10 to 15 year olds' response rate. It also found that the number of respondents reporting serious sexual assault had decreased. These findings led to the decision to remove this screener in the new questions from the 2012/13 CSEW, which from 2013/14 are now being asked of the full sample.

The format for asking the new question set means that all respondents, including non-victims, have to answer more questions in total. To counteract the potential effect of increasing respondent burden, some response categories were omitted from the new question set<sup>5</sup>. Sexual threats have been removed from the questions on less serious sexual assault and interfering with or damaging personal property was omitted from the stalking questions. To ensure that results from the experiment are comparable between the two sets of questions, figures from the original question set published here exclude these offence categories from analysis. (The impact of excluding these categories from the original questions can be seen by comparing the tables in Appendix 2.)

The new style of questions means that the ability to separate out some of the behaviours and relationships has been lost. For example, it is no longer possible to produce separate estimates where the perpetrator was someone known (but not a partner or family member) or a stranger. It is still possible to produce a full breakdown by type of perpetrator for a victim's most recent experience of serious sexual assault using the separate serious sexual assault module.

The original questions were processed to include 'threaten to kill' or 'threaten to use a weapon' in the force category. These two types of threats are now included in the threats question and resulting threats category.

---

<sup>5</sup> This is the case for both the first iteration and the new questions now being used for the full sample.

**Figure 1: Summary of differences between the original and new IPV questions**

Original questions	First iteration of new questions, 2010/11 and 2011/12	New questions (second iteration of new questions, 2012/13 onwards)
Multi-coded questions: Respondents asked to choose all that apply from a list presented to them	Single-coded questions: Respondents asked about each group of items in turn and asked to respond 'yes' or 'no'	Single-coded questions: Respondents asked about each group of items in turn and asked to respond 'yes' or 'no'
Respondents asked a minimum of 5 questions, maximum of 38 questions	Respondents asked a minimum of 10 questions, maximum of 68 questions (maximum of 88 in 2011/12)	Respondents asked a minimum of 14 questions, maximum of 88 questions
Threaten to kill or threaten to use a weapon included in the force category	Threaten to kill or threaten to use a weapon included in the threats category	Threaten to kill or threaten to use a weapon included in the threats category
Less serious sexual assault includes sexual threats	Less serious sexual assault excludes sexual threats  (In 2011/12 added 'in a way that caused you fear, alarm or distress' to less serious sexual assault questions)	Less serious sexual assault excludes sexual threats
Respondents asked directly about experiences of serious sexual assault	Screener question included before questions on serious sexual assault	Respondents asked directly about experiences of serious sexual assault
Stalking questions asks if anyone has behaved in a certain way (with no reference to number of incidents)	Stalking questions asks if anyone has behaved in a certain way (with no reference to number of incidents)  (In 2011/12 cyber stalking was split out in to two separate single-coded questions)	Stalking questions asks if anyone has behaved in a certain way more than once to bring the survey in line with the legal definition  (Cyber stalking included as a two component questions)
Stalking includes deliberately interfered with or damaged your property	Stalking excludes deliberately interfered with or damaged your property	Stalking excludes deliberately interfered with or damaged your property

Note: The maximum number of questions asked is a theoretical figure calculated by assuming the respondent has suffered all types of abuse being asked about. In reality, it is unlikely that anyone would be asked the whole IPV module.

In the original questions, if a respondent had answered ‘don’t know/don’t wish to answer’ to less serious sexual assault and ‘no’ to serious sexual assault then they would be excluded from the any sexual assault estimate. This is because it is not possible to tell whether the respondent has been a victim of abuse or not<sup>6</sup>. This methodology has been applied to the processing of the new questions for the same top level categories: any domestic abuse, any partner abuse, any family abuse and any sexual assault.

In the new questions it is possible for the respondent to have a mixture of ‘don’t know/don’t wish to answer’ and ‘no’ answers within categories (for example rape including attempts is produced from one question on rape and one question on attempted rape). In contrast to the top level categories, in sub category combinations a respondent who has a mixture of ‘no’ and ‘don’t know’ answers, has been included in the base as a ‘no’. ONS intend to explore alternative methods for processing these cases for example, imputing either an answer of ‘yes’ or ‘no’ in-line with observed distributions.

### **The split samples**

For the split-sample experiment, respondents were randomly assigned to receive either the original or the new question set. Using this method, differences in rates can be judged using standard statistical tests to determine whether differences in prevalence between the two sets of questions are statistically significant. Such differences are likely to be due to differences in the questions themselves, rather than experience of victimisation, as there was no bias in the selection of respondents for either half of the sample (Table 1.2).

---

<sup>6</sup> If the respondent has answered ‘yes’ to less serious assault and ‘don’t know’ to serious sexual assault they are included in the any sexual assault estimate because we know they have been a victim.

**Table 1.2: Sex and age profile of the two sub-samples in the IPV split-sample experiment 2012/13<sup>1,2</sup>**

England and Wales	Adults aged 16 to 59	
	Original questions	New questions
Male	45.0	45.2
Female	55.0	54.8
16-19	5.2	4.8
20-24	8.2	7.9
25-29	10.5	10.1
30-34	12.4	12.9
35-39	12.3	12.6
40-44	13.4	13.5
45-49	13.9	13.8
50-54	12.4	12.8
55-59	11.7	11.6
Median age	40	40
<i>Unweighted base</i>	<i>10,550</i>	<i>9,881</i>

1. Source: Crime Survey for England and Wales, Office for National Statistics

2. There are no statistically significant differences observed between the sample characteristics in the original questions and the new questions.

## Published estimates

The results from the original questions presented here differ from the estimates published in the [‘Focus on Violent Crime and Sexual Offences 2012/13’](#) publication as they:

- exclude sexual threats and the interfering with or damaging personal property component of stalking
- have had threats to kill and threats with a weapon reclassified under threats rather than force
- have been reweighted to account for the revised population estimates produced from the 2011 Census.

Results from the new question set, and adjusted back series estimates from the original question set, can be found in [Focus on Violent Crime and Sexual Offences, 2013/14](#). An adjustment has been made to the estimates derived from the original questions to make them as comparable as possible as the estimates from the new questions. For more information see the ‘Adjustment’ section below.



## Results

Intimate violence is a collective term used here to refer to a number of different forms of physical and non-physical abuse consisting of partner abuse, family abuse, sexual assault and stalking. The term reflects the intimate nature either of the victim-offender relationship or of the abuse itself.

The categories are defined as follows for the new questions:

- Domestic abuse: this category combines partner abuse (non-sexual), family abuse (non-sexual) and sexual assault or stalking carried out by a current or former partner or other family member.
- Non-sexual abuse by a partner: physical force, emotional or financial abuse or threats to hurt the respondent or someone close to them carried out by a current or former partner.
- Non-sexual abuse by a family member: physical force, emotional or financial abuse or threats to hurt the respondent or someone close to them carried out by a family member other than a partner (father/mother, step-father/mother or other relative).
- Sexual assault: rape or assault by penetration including attempts ('serious'), indecent exposure or unwanted touching ('less serious') carried out by any person.
- Stalking: two or more incidents (causing distress, fear or alarm) of receiving obscene or threatening unwanted letters, e-mails, text messages or phone calls, having had obscene or threatening information about them placed on the internet, waiting or loitering around home or workplace, or following or watching by any person, including a partner or family member.

There are two headline measures within intimate violence categories in the CSEW: one relates to experiences since the age of 16 and the other is limited to those experiences in the last 12 months. Results for the original questions and the new questions for each of the headline categories, for both the since the age of 16 and the last year measure, are presented below.

## Summary

Analysis of the 2012/13 CSEW IPV split-sample experiment shows that the new questions produced higher estimated prevalence rates across the majority of categories. The new questions have not led to significantly higher estimates across all headline<sup>7</sup> categories (Table 2.1).

For experience since the age of 16, the new questions produced significantly higher prevalence estimates for any family abuse; however, there was no significant difference observed for any domestic abuse or any partner abuse. The new questions produced significantly lower estimates of non-physical partner abuse, but this pattern was not reflected in non-physical family abuse. The new questions produced significantly higher estimates for all sexual assault and stalking categories.

For measures of experience in the last year, the new questions produced significantly higher estimates for any domestic abuse and any partner abuse, but not for any family abuse. The new questions also produced significantly higher estimates of non-sexual partner abuse, but the higher estimates observed for non-sexual family abuse was not significant. The new questions produced

---

<sup>7</sup> Headline categories are any domestic abuse, any partner abuse, any family abuse, any sexual assault and stalking.

higher estimates for the majority of sexual assault and stalking categories but not all differences were significant.

**Table 2.1: Direction and significance observed in the IPV split-sample experiment 2012/13<sup>1,2,3</sup>**

England and Wales	Men		Women		All	
	Since 16	Last year	Since 16	Last year	Since 16	Last year
<i>Direction and significance of difference between new and original questions</i>						
<b>Any domestic abuse (partner or family non-physical abuse, threats, force, sexual assault or stalking)</b>	↑	↑	↓	↑ *	↓	↑ *
<b>Any partner abuse (non-physical abuse, threats, force, sexual assault or stalking)</b>	↑	↓	↓	↑ *	↓	↑ *
<b>Any family abuse (non-physical abuse, threats, force, sexual assault or stalking)</b>	↑	↑	↑ *	↑	↑ *	↑
<b>Partner abuse - non-sexual</b>	↓	↓	↓	↑ *	↓	↑ *
Non-physical abuse (emotional, financial)	↓	↑	↓ *	↑ *	↓ *	↑ *
Threats or force	↑	↓	↑	↑ *	↑	↑ *
Threats	↑ *	↑	↑ *	↑ *	↑ *	↑ *
Force	↑	↓	↓	↑	↓	↓
<b>Family abuse - non-sexual</b>	↓	↑	↑ *	↑	↑	↑
Non-physical abuse (emotional, financial)	↑	↑	↑ *	↑ *	↑	↑ *
Threats or force	↑	↑	↑ *	↑	↑	↑
Threats	↑ *	↑ *	↑ *	↑ *	↑ *	↑ *
Force	↓	↓	↑	↓	↑	↓
<b>Any sexual assault (including attempts)</b>	↑ *	↑	↑ *	↑ *	↑ *	↑ *
Serious sexual assault including attempts	↑	↑	↑ *	↑ *	↑ *	↑ *
Serious sexual assault excluding attempts	↑	↓	↑ *	↑ *	↑ *	↑ *
- Rape including attempts	↑	↓	↑ *	↑ *	↑ *	↑ *
- Rape excluding attempts	↑	↓	↑ *	↑ *	↑ *	↑ *
- Assault by penetration including attempts	↑ *	↑	↑ *	↑	↑ *	↑
- Assault by penetration excluding attempts	↑	↑	↑ *	↑	↑ *	↑
Less serious sexual assault	↑ *	↑ *	↑ *	↑ *	↑ *	↑ *
- Indecent exposure	↑ *	↑	↑ *	↑ *	↑ *	↑ *
- Sexual touching	↑ *	↑	↑ *	↑	↑ *	↑
Any sexual assault (including attempts) by a partner	↑ *	↑	↑ *	↑	↑ *	↑
Serious sexual assault (including attempts) by a partner	↑ *	↑	↑ *	↓	↑ *	↑
Less serious sexual assault by a partner	↑ *	↑	↑ *	↑	↑ *	↑
Any sexual assault (including attempts) by a family member	↑	↑	↑ *	↑	↑ *	↑
Serious sexual assault (including attempts) by a family member	↑	↓	↑ *	↑	↑ *	↑
Less serious sexual assault by a family member	↑	↑	↑	↓	↑ *	↓
<b>Stalking</b>	↑ *	↑ *	↑ *	↑ *	↑ *	↑ *
- Letters/phone calls	↑ *	↑	↑ *	↑ *	↑ *	↑ *
- Waiting/following	↑ *	↑ *	↑ *	↑ *	↑ *	↑ *
- Cyber	↑ *	↑ *	↑	↓	↑ *	↑ *
Stalking by a partner	↑	↑	↑ *	↓	↑ *	↓
Stalking by a family member	↑ *	↑	↑ *	↑ *	↑ *	↑ *

Notes: 1. Source: Crime Survey for England and Wales, Office for National Statistics  
 2. See Chapter 5 of the User Guide for definitions of the various types of intimate violence.  
 3. An up arrow reflects that the new questions had a higher prevalence estimate than the original questions.

Given that there were minimal changes in question wording between the two question sets and no change in interview administration, any significant differences in estimates were most likely due to the different structure of the questions. Specifically, in the original question set respondents were presented with lists containing different types of abuse and asked to select any of those they had experienced. However, in the new question set, each group of options in the list was presented in turn and respondents were asked to respond 'yes' or 'no' to a question on whether they had experienced that type of abuse.

It appears that this question structure led to respondents being more likely to report experience of victimisation. This may simply be a result of the more user friendly presentation, which reduces the risk that respondents fail to spot all the categories that apply to them when they are presented as part of a long list. Alternatively it may be that repeated questioning gives more opportunities for respondents to report victimisation.

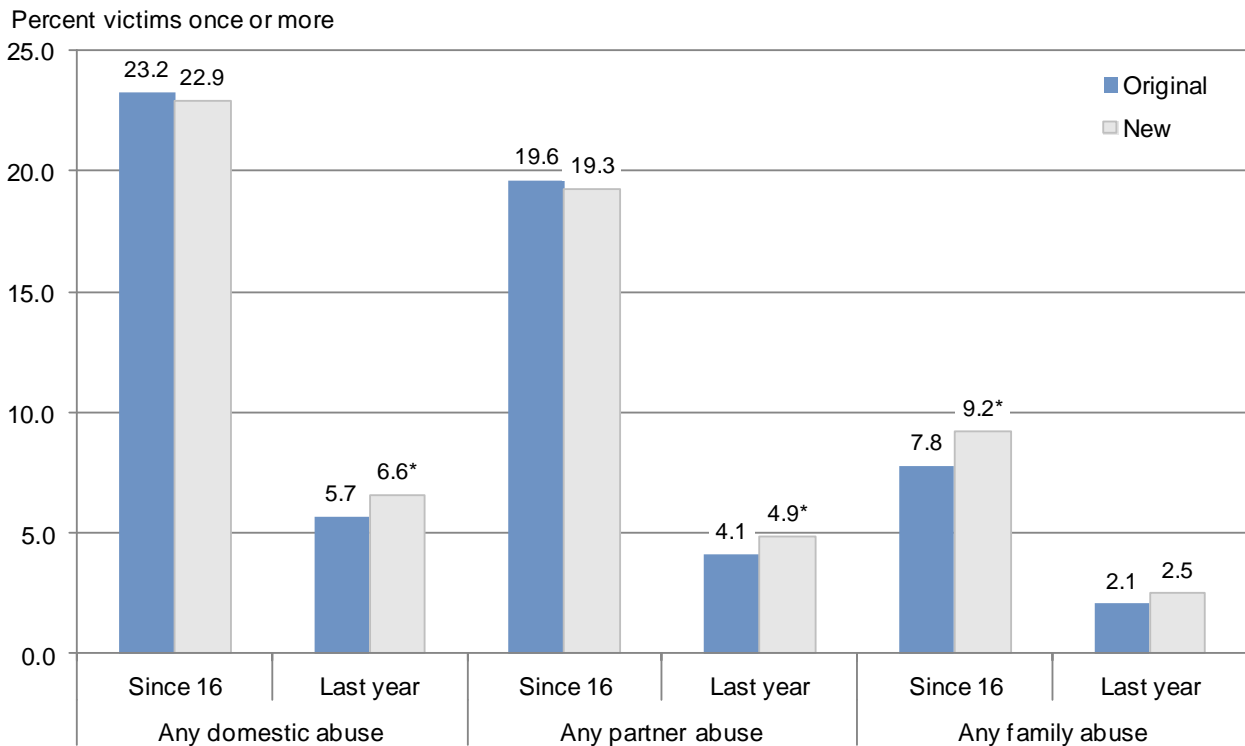
While not significant, the new estimates produced some lower estimates of force by a partner or family member. This decrease was observed for male and female victims in at least two of the three years of the split sample. While not a consistent picture, some decrease in prevalence may have been caused by the new questions. While the new force questions still present some examples of behaviour, this is a reduced list compared to the original question. The lack of further examples to prompt the respondent may be causing them to underreport in the new questions. Force is the only abuse category that has seen a reduction in the number of behaviours listed in the new question text.

### **Split sample results in detail**

The new questions set produced statistically higher estimates for the prevalence of any family abuse experienced since the age of 16 (9.2% in the new questions compared with 7.8% in the original questions, Figure 2.1). The apparently lower estimates produced by the new questions for any domestic abuse and any partner abuse since the age of 16, were not significantly different.

In contrast, the new questions set produced statistically higher estimates for the prevalence of any domestic abuse in the last year (6.6% compared with 5.7%) and any partner abuse (4.9% compared with 4.1%). There was no statistically significant difference between the two sets of questions for any family abuse experienced in the last year.

**Figure 2.1 Prevalence of intimate violence experienced by headline category, 2012/13 CSEW**



Notes: 1. Source: Crime Survey for England and Wales, Office for National Statistics  
\* represents a significant difference between the original and new questions

### Non-sexual partner abuse

There was no statistically significant difference between estimates from the two sets of questions for non-sexual partner abuse since the age of 16 (Appendix table 2.1, Figure 2.2). However, in the sub-categories the new questions produced a significantly lower estimate of non-physical abuse experienced since the age of 16 (10.8% compared with 12.1%) and a significantly higher estimate of threats experienced since the age of 16 (10.0% compared with 6.6%).

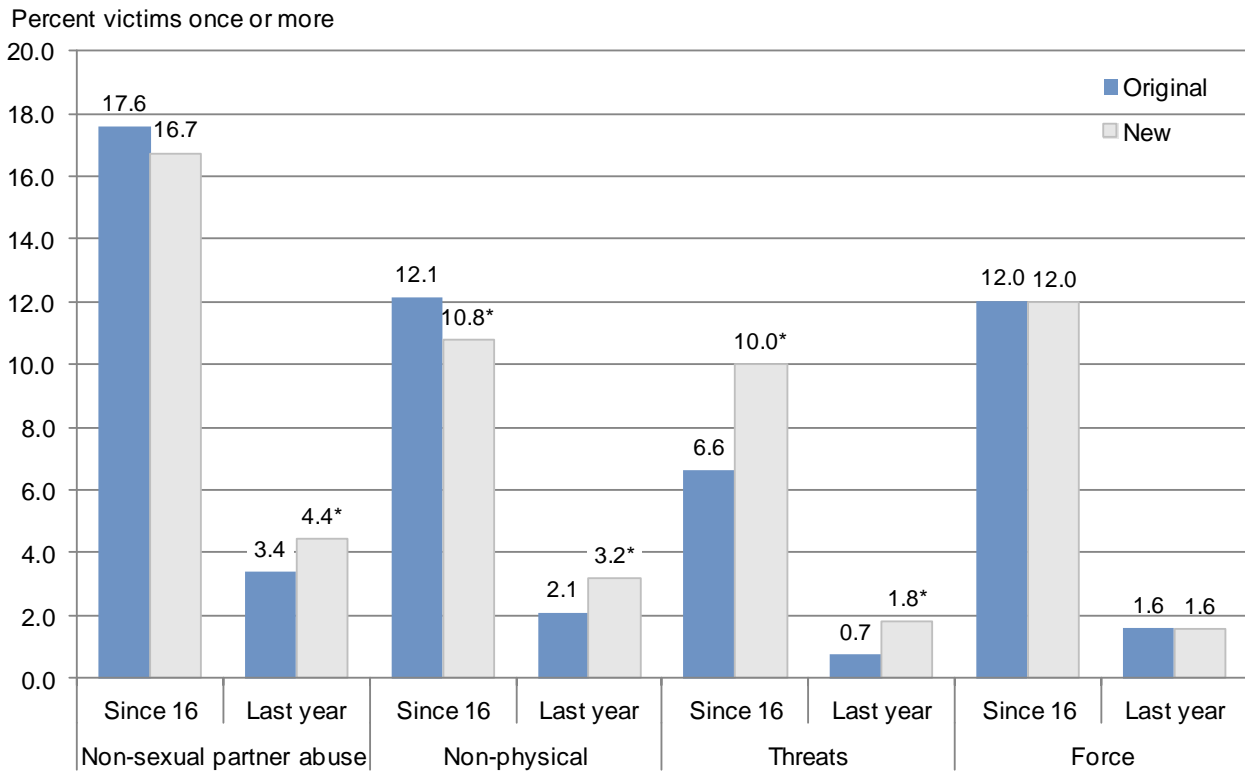
In contrast, the new questions produced a significantly higher estimate of non-sexual partner abuse experienced in the last year (4.4% compared to 3.4%). This was true for all sub-categories of non-sexual partner abuse except for force.

The split sample paper produced for the 2010/11 data also found the new questions led to a significantly lower estimate of non-physical partner abuse experienced since the age of 16. In both cases, the new questions produced a significantly higher estimate for the equivalent measure in the last year. This inconsistency is perhaps indicative of the fact that the overall differences in prevalence between the two sets of questions were relatively small and therefore results for individual measures may vary from the results seen overall.

In the original questions, threats to kill and threats made with a weapon were analysed within the force category. The new questions now include these two types of abuse in the threats category. An adjustment in the back series to align these categories has been made so the increase in

threats, which is observed for both male and female victims in both time periods, is not due to the change in definition.

**Figure 2.2 Prevalence of non-sexual partner abuse, 2012/13 CSEW**



Notes: 1. Source: Crime Survey for England and Wales, Office for National Statistics  
\* represents a significant difference between the original and new questions

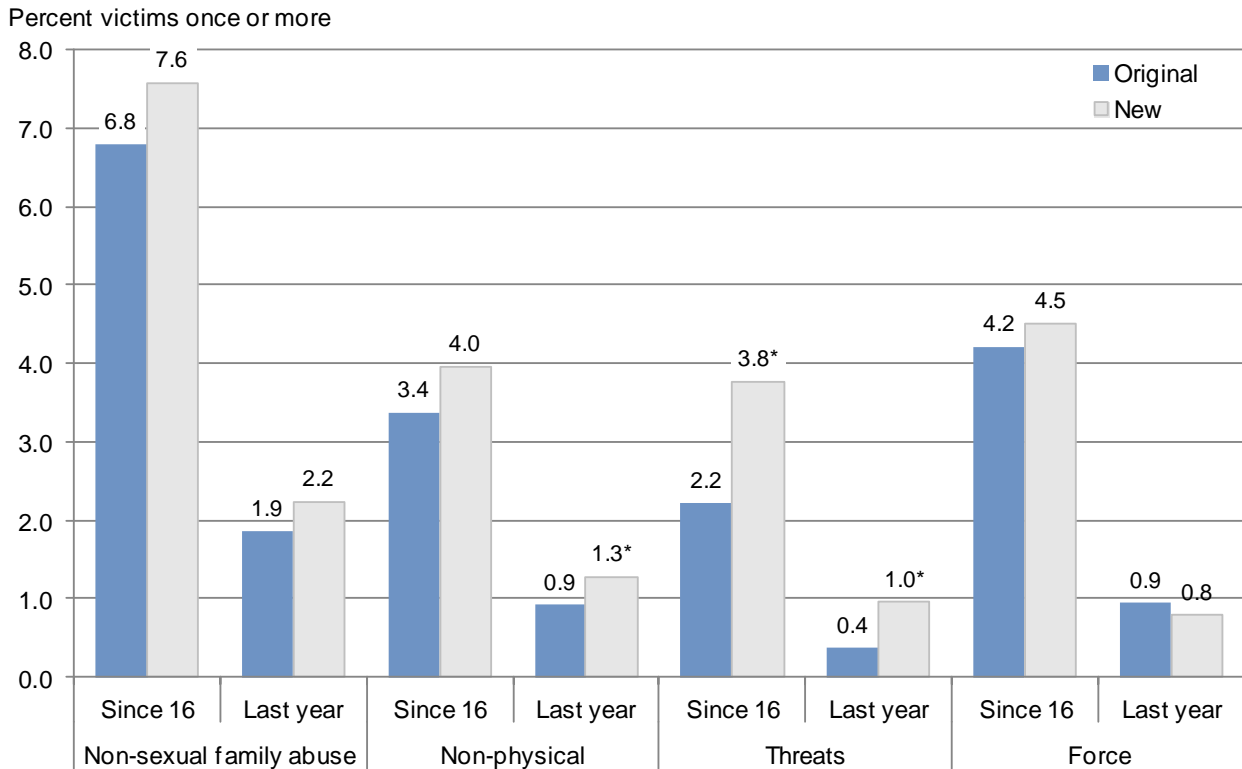
### Non-sexual family abuse

There was no statistically significant difference between the two sets of questions for non-sexual family abuse since the age of 16 (Appendix table 2.1, Figure 2.3). However, the new questions did produce a significantly higher estimate for female victims. Within the sub-categories the new questions produced a significantly higher estimate of threats experienced since the age of 16 (3.8% compared with 2.2%). The apparent increases in the other categories were not significant.

The difference between the question sets was also not significant for non-sexual family abuse in the last year. However, in the sub-categories, alongside the new questions producing a significantly higher estimate of threats (1.0% compared with 0.4%), the set also produced a significantly higher estimate for non-physical abuse (1.3% compared with 0.9%).

As with non-sexual partner abuse, an adjustment to align these categories has been made and demonstrates that the increase in threats, which is observed for both male and female victims in both time periods, is not due to the change in definition.

**Figure 2.3 Prevalence of non-sexual family abuse, 2012/13 CSEW**



Notes: 1. Source: Crime Survey for England and Wales, Office for National Statistics  
\* represents a significant difference between the original and new questions

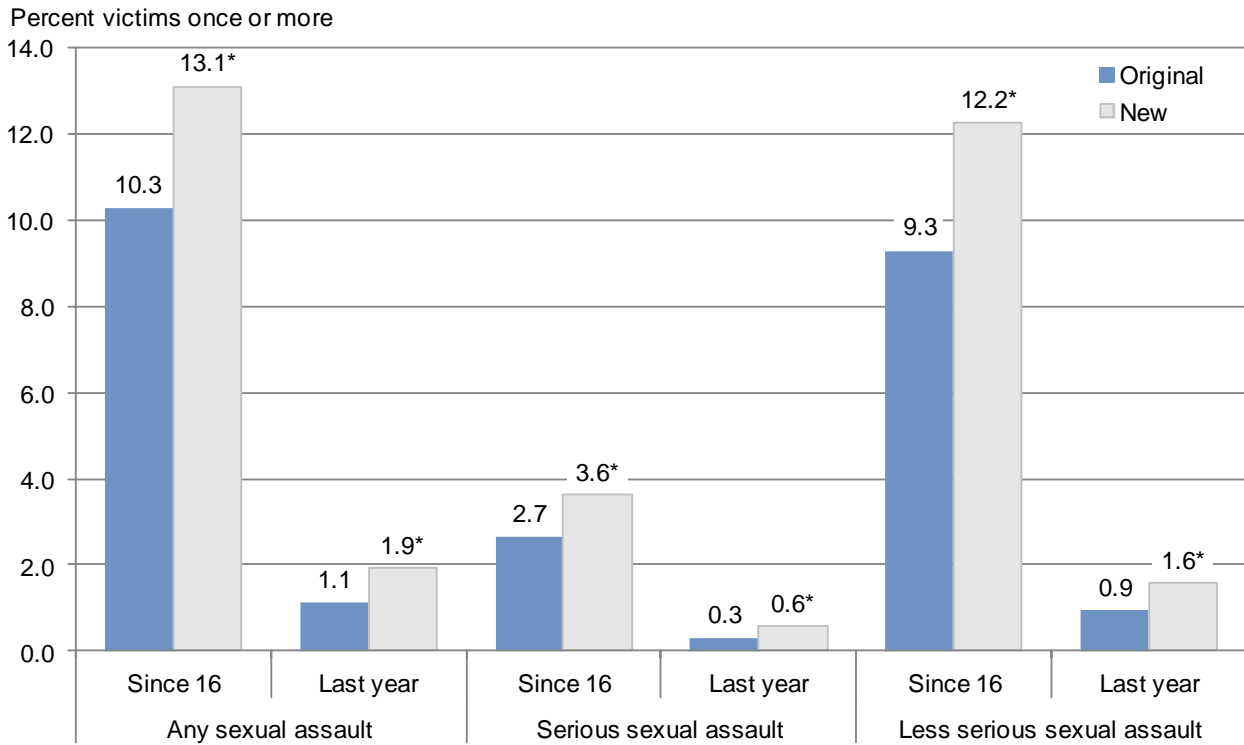
### Sexual assault

The difference in estimates between the two sets of questions was much greater for sexual assault than for non-sexual abuse. The new question set produced significantly higher estimates for sexual assault since the age of 16 (13.1% compared with 10.3%, Figure 2.4). The new questions produced higher estimates for all categories of sexual assault experienced since the age of 16 (Appendix table 2.1). This was true for female victims whereas for male victims the significantly higher estimates were observed for only three of the sub-categories: indecent exposure, sexual touching and assault by penetration including attempts.

The new questions also produced significantly higher estimates for sexual assault experienced in the last year. This included overall sexual assault (1.9% compared with 1.1%), serious sexual assault (0.6% compared with 0.3%) and less serious sexual assault (1.6% compared with 0.9%). However, unlike measures for experience since 16, for the majority of the sub-categories there was not a significant difference between the two question sets.

In the 2010/11 analysis, a significant decrease was found in prevalence of serious sexual assault in the last year. This resulted in the removal of the additional screener question from the first iteration of the serious sexual assault questions. The findings observed here for 2012/13 data suggest that it was the correct decision to remove the additional screener question.

**Figure 2.4 Prevalence of sexual assault, 2012/13 CSEW**



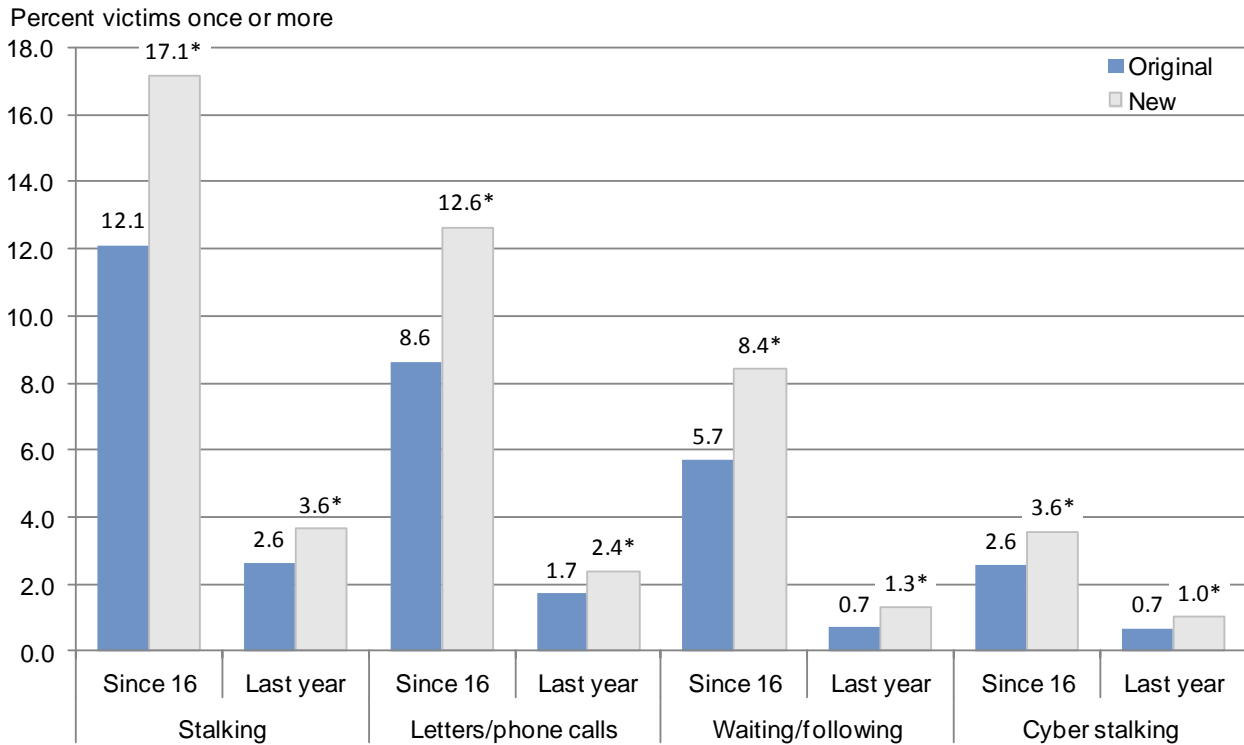
Notes: 1. Source: Crime Survey for England and Wales, Office for National Statistics  
\* represents a significant difference between the original and new questions

### Stalking

The greatest differences seen between the original and the new questions were observed in the stalking questions. The new question set produced significantly higher estimates for stalking experienced since the age of 16 (17.1% compared to 12.1%) (Appendix table 2.1, Figure 2.5) and for the three sub-categories for all victims. The new question set also produced significantly higher estimates for stalking experienced in the last year (3.6% compared with 2.6%) and for each of the three sub-categories.



**Figure 2.5 Prevalence of stalking, 2012/13 CSEW**



Notes: 1. Source: Crime Survey for England and Wales, Office for National Statistics  
\* represents a significant difference between the original and new questions

The 2010/11 survey analysis conducted by the Home Office also saw similarly large, significant increases; however, since the 2010/11 survey there has also been a change in the definition. The new stalking questions ask whether the respondent has experienced the behaviour in question ‘more than once’ to align the questions with the legal definition. This was thought to be a narrowing of the definition which would lead to lower estimates.

**Original question and first iteration of new questions wording**

Since the age of 16, has ANYONE ever done any of the following things to you? This may have been a partner, a family member, someone you knew casually, or a stranger.

**New question wording**

Since the age of 16 has anyone ever sent you more than one unwanted letter, text message or card that was either obscene or threatening and which caused you fear, alarm or distress?

The fact that significant, large increases were seen in the 2010/11 split sample research implies that the difference has mainly been caused by the change in how the questions are being asked, rather than the change in the definition.

## Other survey effects

There was no statistically significant difference between respondents to the two question sets in how likely they were to ask the interviewer for help, or how likely they were to discuss their responses to the self-completion module with someone else. For both sets of questions, 2% of respondents asked for help with more than one or two questions. For the new questions 11% of respondents had someone else look at or discuss the self-completion module which was not significantly different to 12% of respondents for the original question set.

The average time taken to complete the IPV module containing the original question set was 4 minutes 4 seconds and for the new question set was 5 minutes 24 seconds. As expected, this time was longer for victims, with those answering the original question set taking an average of 9 minutes 35 seconds and those answering the new question set an average of 11 minutes 24 seconds.

Significantly fewer respondents answered 'don't know' or 'don't wish to answer' to non-sexual partner abuse, non-sexual family abuse and serious sexual assault (since the age of 16)<sup>8</sup>. For example, 4.8% of respondents answered 'don't know/can't remember' or 'don't wish to answer' to the original non-sexual partner abuse questions compared with 1.6% of respondents in the new questions. This implies that respondents are finding the new questions easier to complete than the original questions.

## Adjustment

Analysis of the 2012/13 CSEW IPV split-sample experiment shows that the new questions produced higher estimated prevalence rates across a range of categories. The question change has not led to significantly higher estimates across all headline categories.

This means that without adjustment, estimates calculated from the new questions are not comparable with estimates calculated from the original questions. In order to make consistent estimates over the full IPV time series (from 2004/05) an adjustment has been calculated and applied to the figures published in [Focus on Violent Crime and Sexual Offences, 2013/14](#). The adjusted time series for experience since 16 and experience in the last year can be found in Appendix 3. The standard errors of the back series have also been adjusted using the variance of the estimates that have been used to calculate the main adjustment.

Estimates for years prior to 2013/14 have been calculated from the new questions wherever possible – that is, all estimates for 2012/13 and 2013/14, and non-sexual partner and non-sexual family abuse estimates for 2010/11 and 2011/12. For the other estimates, adjustments have been calculated for each category and applied independently. This means that the adjustment applied for a headline category (such as any partner abuse) is not dependent on any of the adjustments applied to sub-categories.

The new questions for non-sexual partner and non-sexual family abuse have been kept the same across the split sample experiment. Therefore, the adjustment applied to these series prior to 2010/11 is the mean of the percentage difference observed between the new and original

---

<sup>8</sup> It is not possible to complete this analysis for less serious sexual assault or stalking due to the additional categories in the original questions.

questions in 2010/11, 2011/12 and 2012/13. For sexual assault and stalking, only one year of consistent overlap between the new and original questions is available. The adjustment applied to these series prior to 2012/13 is the observed percentage difference in 2012/13.

In a few instances, the observed values in the original questions and the new questions were less than 0.5%. These occurred in the experienced in the last 12 months within some of the 'sexual assault by a partner' and 'sexual assault by a family member' categories. The absolute differences are small in all cases, but in some the percentage difference is large. Using the methodology described above caused large adjustments to be applied which led to unrealistic results when applied to slightly larger historical values. To ensure the patterns observed in the back series reflect the original observations, no adjustment has been applied in these cases.

## Appendix 1 – examples of changes to IPV questions

### Main change – multi coded to single coded

Original:

**PV1A-  
PV10**

**[ASK ALL AGE 16-59 MODULE A AND B RESPONDENTS IF NONRESP = 1 OR  
NONRESP2 = 1]**

Thinking about ANY relationships you have had since you were 16, has any PARTNER ever done any of the following things to you? By partner, we mean any boyfriend or girlfriend, as well as a husband, wife or civil partner.

YOU CAN CHOOSE MORE THAN ONE ANSWER AT THIS QUESTION IF YOU WISH

1. Prevented you from having your fair share of the household money
2. Stopped you from seeing friends and relatives
3. Repeatedly belittled you to the extent that you felt worthless
4. Frightened you, by threatening to hurt you or someone close to you
5. Pushed you, held you down or slapped you
6. Kicked, bit, or hit you with a fist or something else, or threw something at you
7. Choked or tried to strangle you
8. Threatened you with a weapon, for example a stick or a knife
9. Threatened to kill you
10. Used a weapon against you, for example a stick or a knife
11. Used some other kind of force against you
12. None of these
13. Have never had a partner / been in a relationship
14. Don't know/can't remember
15. Don't wish to answer

New:

**NIPV1**

**[ASK ALL AGE 16-59 MODULE C AND D RESPONDENTS IF NONRESP = 1 OR  
NONRESP2 = 1]**

Since you were 16 has a **partner or ex-partner** ever done any of the things listed below?

By partner we mean a boyfriend, girlfriend, husband, wife or civil partner.

- Prevented you from having your fair share of the household money
  - Stopped you from seeing friends and relatives
  - Repeatedly belittled you to the extent that you felt worthless
1. Yes
  2. No
  3. Never had a partner/been in a relationship
  4. Don't know/can't remember
  5. Don't wish to answer

**NIPV3 [ASK ALL AGE 16-59 MODULE C AND D RESPONDENTS IF (NONRESP = 1 OR NONRESP2 = 1) AND NIPV1 NE 3]**

Since you were 16 has a **partner or ex-partner** ever frightened or threatened you in any way?

For example, they may have threatened to hurt you, to kill you, to use a weapon on you, or to hurt someone close to you [such as your children]?

1. Yes
2. No
3. Don't know/can't remember
4. Don't wish to answer

**NIPV5 [ASK ALL AGE 16-59 MODULE C AND D RESPONDENTS IF (NONRESP = 1 OR NONRESP2 = 1) AND NIPV3 NE 3]**

Since you were 16 has a **partner or ex-partner** ever used force on you?

For example, they may have pushed you, slapped you, hit, punched or kicked you, choked you or used a weapon against you.

1. Yes
2. No
3. Don't know/can't remember
4. Don't wish to answer

**Stalking questions – change to more than once**

Original:

**PV272A-**

**PV272J**

**[ASK ALL AGE 16-59 MODULE A AND B RESPONDENTS IF NONRESP = 1 OR NONRESP2 = 1]**

Since the age of 16, has ANYONE ever done any of the following things to you? This may have been a partner, a family member, someone you knew casually, or a stranger.

**YOU CAN CHOOSE MORE THAN ONE ANSWER AT THIS QUESTION**

1. Sent you unwanted letters, text messages or cards that were either obscene or threatening
2. Made a number of obscene, threatening, nuisance or silent phone calls to you
3. Waited or loitered outside your home or workplace
4. Followed you around and watched you
5. Deliberately interfered with or damaged your personal property
6. Sent you unwanted e-mails that were either obscene or threatening
7. Put personal, obscene or threatening information about you on the internet
8. None of these
9. Don't know/ can't remember
10. Don't wish to answer

New:

**NIPV533 [ASK ALL AGE 16-59 MODULE C AND D RESPONDENTS IF NONRESP = 1 OR  
NONRESP2 = 1]**

Since the age of 16 has **anyone** ever sent you more than one unwanted letter, text message or card that was either obscene or threatening and which caused you fear, alarm or distress?

This may have been a partner, a family member, a friend or work colleague, someone you knew casually, or a stranger.

1. Yes
2. No
3. Don't know/can't remember
4. Don't wish to answer

## Appendix 2 – Estimates for the original questions and the new questions in 2012/13

Appendix table 2.1: Prevalence of intimate violence experienced since the age of 16 by category among adults aged 16 to 59, CSEW 2012/13<sup>1,2</sup>

England and Wales	Adults aged 16 to 59								
	Men			Women			All		
	Original questions	New questions	Statistically significant difference	Original questions	New questions	Statistically significant difference	Original questions	New questions	Statistically significant difference
<i>Percentage who were victims once or more</i>									
<b>Any domestic abuse (partner or family non-physical abuse, threats, force, sexual assault or stalking)</b>	<b>16.3</b>	<b>16.4</b>		<b>30.0</b>	<b>29.4</b>		<b>23.2</b>	<b>22.9</b>	
<b>Any partner abuse (non-physical abuse, threats, force, sexual assault or stalking)</b>	<b>12.7</b>	<b>12.8</b>		<b>26.4</b>	<b>25.7</b>		<b>19.6</b>	<b>19.3</b>	
<b>Any family abuse (non-physical abuse, threats, force, sexual assault or stalking)</b>	<b>6.5</b>	<b>7.0</b>		<b>9.0</b>	<b>11.5</b>	*	<b>7.8</b>	<b>9.2</b>	*
<b>Partner abuse - non-sexual</b>	<b>11.1</b>	<b>10.9</b>		<b>23.9</b>	<b>22.5</b>		<b>17.6</b>	<b>16.7</b>	
Non-physical abuse (emotional, financial)	6.9	6.1		17.2	15.4	*	12.1	10.8	*
Threats or force	7.0	8.2		19.1	19.6		13.2	13.9	
Threats	2.0	4.2	*	11.1	15.8	*	6.6	10.0	*
Force	6.5	6.9		17.5	17.0		12.0	12.0	
<b>Family abuse - non-sexual</b>	<b>6.0</b>	<b>6.0</b>		<b>7.5</b>	<b>9.1</b>	*	<b>6.8</b>	<b>7.6</b>	
Non-physical abuse (emotional, financial)	2.5	2.7		4.2	5.2	*	3.4	4.0	
Threats or force	4.5	4.6		5.6	6.9	*	5.1	5.7	
Threats	1.7	2.8	*	2.7	4.7	*	2.2	3.8	*
Force	3.8	3.6		4.6	5.4		4.2	4.5	
<b>Any sexual assault (including attempts)</b>	<b>2.5</b>	<b>4.2</b>	*	<b>18.1</b>	<b>21.9</b>	*	<b>10.3</b>	<b>13.1</b>	*
Serious sexual assault including attempts	0.4	0.6		4.9	6.6	*	2.7	3.6	*
Serious sexual assault excluding attempts	0.3	0.4		3.7	5.4	*	2.0	2.9	*
- Rape including attempts	0.4	0.5		4.3	5.8	*	2.3	3.1	*
- Rape excluding attempts	0.2	0.3		3.4	4.7	*	1.8	2.5	*
- Assault by penetration including attempts	0.1	0.4	*	1.7	4.3	*	0.9	2.3	*
- Assault by penetration excluding attempts	0.1	0.2		1.3	3.3	*	0.7	1.8	*
Less serious sexual assault	2.2	4.0	*	16.3	20.5	*	9.3	12.2	*
- Indecent exposure	0.8	1.3	*	8.4	11.5	*	4.6	6.4	*
- Sexual touching	1.6	3.0	*	11.0	13.7	*	6.3	8.3	*
Any sexual assault (including attempts) by a partner	0.2	1.0	*	3.5	6.6	*	1.8	3.8	*
Serious sexual assault (including attempts) by a partner	0.0	0.2	*	2.2	4.0	*	1.1	2.1	*
Less serious sexual assault by a partner	0.1	0.8	*	2.3	5.4	*	1.2	3.1	*
Any sexual assault (including attempts) by a family member	0.1	0.3		1.3	2.0	*	0.7	1.1	*
Serious sexual assault (including attempts) by a family member	0.0	0.1		0.3	0.8	*	0.1	0.4	*
Less serious sexual assault by a family member	0.1	0.3		1.2	1.7		0.6	1.0	*
<b>Stalking</b>	<b>7.3</b>	<b>11.0</b>	*	<b>16.9</b>	<b>23.3</b>	*	<b>12.1</b>	<b>17.1</b>	*
- Letters/phone calls	5.5	8.1	*	11.7	17.1	*	8.6	12.6	*
- Waiting/following	2.3	4.1	*	9.1	12.7	*	5.7	8.4	*
- Cyber	1.7	3.0	*	3.4	4.1		2.6	3.6	*
Stalking by a partner	2.9	3.3		7.7	9.4	*	5.3	6.4	*
Stalking by a family member	0.4	1.4	*	1.0	2.9	*	0.7	2.2	*
<b>Unweighted base<sup>3</sup></b>	<b>4,336</b>	<b>4,292</b>		<b>5,415</b>	<b>5,213</b>		<b>9,751</b>	<b>9,505</b>	

1. Source: Crime Survey for England and Wales, Office for National Statistics

2. See Chapter 5 of the [User Guide](#) for definitions of the various types of intimate violence.

3. The bases given are for any domestic abuse; the bases for the other measures presented will be similar.

**Appendix table 2.2: Prevalence of intimate violence experienced in the last year by category among adults aged 16 to 59, CSEW 2012/13<sup>1,2</sup>**

England and Wales	Men			Women			Adults aged 16 to 59		
	Original questions	New questions	Statistically significant difference	Original questions	New questions	Statistically significant difference	Original questions	New questions	Statistically significant difference
<i>Percentage who were victims once or more</i>									
<b>Any domestic abuse (partner or family non-physical abuse, threats, force, sexual assault or stalking)</b>	<b>4.3</b>	<b>4.4</b>		<b>7.0</b>	<b>8.8</b>	*	<b>5.7</b>	<b>6.6</b>	*
<b>Any partner abuse (non-physical abuse, threats, force, sexual assault or stalking)</b>	<b>3.1</b>	<b>3.0</b>		<b>5.1</b>	<b>6.7</b>	*	<b>4.1</b>	<b>4.9</b>	*
<b>Any family abuse (non-physical abuse, threats, force, sexual assault or stalking)</b>	<b>1.6</b>	<b>1.8</b>		<b>2.5</b>	<b>3.2</b>		<b>2.1</b>	<b>2.5</b>	
<b>Partner abuse - non-sexual</b>	<b>2.8</b>	<b>2.7</b>		<b>4.0</b>	<b>6.1</b>	*	<b>3.4</b>	<b>4.4</b>	*
Non-physical abuse (emotional, financial)	1.7	1.9		2.5	4.5	*	2.1	3.2	*
Threats or force	1.4	1.4		2.4	3.7	*	1.9	2.6	*
Threats	0.3	0.6		1.2	3.0	*	0.7	1.8	*
Force	1.3	1.1		1.9	2.1		1.6	1.6	
<b>Family abuse - non-sexual</b>	<b>1.5</b>	<b>1.8</b>		<b>2.2</b>	<b>2.7</b>		<b>1.9</b>	<b>2.2</b>	
Non-physical abuse (emotional, financial)	0.7	0.8		1.1	1.7	*	0.9	1.3	*
Threats or force	0.8	1.1		1.4	1.6		1.1	1.3	
Threats	0.2	0.7	*	0.5	1.2	*	0.4	1.0	*
Force	0.8	0.8		1.1	0.8		0.9	0.8	
<b>Any sexual assault (including attempts)</b>	<b>0.4</b>	<b>0.8</b>		<b>1.8</b>	<b>3.0</b>	*	<b>1.1</b>	<b>1.9</b>	*
Serious sexual assault including attempts	0.1	0.2		0.5	1.0	*	0.3	0.6	*
Serious sexual assault excluding attempts	0.1	0.1		0.3	0.6	*	0.2	0.3	
- Rape including attempts	0.1	0.1		0.3	0.8	*	0.2	0.4	*
- Rape excluding attempts	0.1	0.1		0.2	0.4	*	0.1	0.3	
- Assault by penetration including attempts	0.0	0.1		0.4	0.5		0.2	0.3	
- Assault by penetration excluding attempts	0.0	0.1		0.2	0.3		0.1	0.2	
Less serious sexual assault	0.3	0.8	*	1.6	2.3	*	0.9	1.6	*
- Indecent exposure	0.1	0.2		0.4	1.1	*	0.2	0.7	*
- Sexual touching	0.3	0.6		1.3	1.4		0.8	1.0	
Any sexual assault (including attempts) by a partner	0.1	0.1		0.4	0.4		0.3	0.3	
Serious sexual assault (including attempts) by a partner	0.0	0.0		0.3	0.3		0.2	0.2	
Less serious sexual assault by a partner	0.1	0.1		0.2	0.2		0.1	0.2	
Any sexual assault (including attempts) by a family member	0.0	0.0		0.0	0.1		0.0	0.0	
Serious sexual assault (including attempts) by a family member	0.0	0.0		0.0	0.1		0.0	0.0	
Less serious sexual assault by a family member	0.0	0.0		0.0	0.0		0.0	0.0	
<b>Stalking</b>	<b>1.5</b>	<b>2.6</b>	*	<b>3.8</b>	<b>4.7</b>	*	<b>2.6</b>	<b>3.6</b>	*
- Letters/phone calls	1.0	1.6		2.4	3.2	*	1.7	2.4	*
- Waiting/following	0.2	0.7	*	1.2	1.9	*	0.7	1.3	*
- Cyber	0.4	1.0	*	1.0	1.0		0.7	1.0	*
Stalking by a partner	0.4	0.4		1.5	1.1		0.9	0.8	
Stalking by a family member	0.1	0.2		0.3	0.7	*	0.2	0.4	*
<i>Unweighted base<sup>3</sup></i>	<i>4,289</i>	<i>4,284</i>		<i>5,238</i>	<i>5,184</i>		<i>9,527</i>	<i>9,468</i>	

1. Source: Crime Survey for England and Wales, Office for National Statistics

2. See Chapter 5 of the [User Guide](#) for definitions of the various types of intimate violence.

3. The bases given are for any domestic abuse; the bases for the other measures presented will be similar.



**Appendix table 2.3: Prevalence of intimate violence experienced since the age of 16 by category among adults aged 16 to 59, without reclassification, CSEW 2012/13<sup>1,2</sup>**

England and Wales	Men			Women			Adults aged 16 to 59		
	Original questions	New questions	Statistically significant difference	Original questions	New questions	Statistically significant difference	Original questions	New questions	Statistically significant difference
<i>Percentage who were victims once or more</i>									
<b>Any domestic abuse (partner or family non-physical abuse, threats, force, sexual assault or stalking)<sup>4,5</sup></b>	<b>16.3</b>	<b>16.4</b>		<b>30.1</b>	<b>29.4</b>		<b>23.3</b>	<b>22.9</b>	
<b>Any partner abuse (non-physical abuse, threats, force, sexual assault or stalking)<sup>4,5</sup></b>	<b>12.7</b>	<b>12.8</b>		<b>26.5</b>	<b>25.7</b>		<b>19.7</b>	<b>19.3</b>	
<b>Any family abuse (non-physical abuse, threats, force, sexual assault or stalking)<sup>4,5</sup></b>	<b>6.5</b>	<b>7.0</b>		<b>9.1</b>	<b>11.5</b>	*	<b>7.8</b>	<b>9.2</b>	*
<b>Partner abuse - non-sexual</b>	<b>11.1</b>	<b>10.9</b>		<b>23.9</b>	<b>22.5</b>		<b>17.6</b>	<b>16.7</b>	
Non-physical abuse (emotional, financial)	6.9	6.1		17.2	15.4	*	12.1	10.8	*
Threats or force	7.0	8.2		19.1	19.6		13.2	13.9	
Threats <sup>6</sup>	0.8	4.2	*	9.9	15.8	*	5.4	10.0	*
Force <sup>6</sup>	6.9	6.9		17.9	17.0		12.5	12.0	
<b>Family abuse - non-sexual</b>	<b>6.0</b>	<b>6.0</b>		<b>7.5</b>	<b>9.1</b>	*	<b>6.8</b>	<b>7.6</b>	
Non-physical abuse (emotional, financial)	2.5	2.7		4.2	5.2	*	3.4	4.0	
Threats or force	4.5	4.6		5.6	6.9	*	5.1	5.7	
Threats <sup>6</sup>	1.2	2.8	*	2.5	4.7	*	1.9	3.8	*
Force <sup>6</sup>	4.2	3.6		4.9	5.4		4.5	4.5	
<b>Any sexual assault (including attempts)<sup>4</sup></b>	<b>2.7</b>	<b>4.2</b>	*	<b>19.1</b>	<b>21.9</b>	*	<b>11.0</b>	<b>13.1</b>	*
Serious sexual assault including attempts	0.4	0.6		4.9	6.6	*	2.7	3.6	*
Serious sexual assault excluding attempts	0.3	0.4		3.7	5.4	*	2.0	2.9	*
- Rape including attempts	0.4	0.5		4.3	5.8	*	2.3	3.1	*
- Rape excluding attempts	0.2	0.3		3.4	4.7	*	1.8	2.5	*
- Assault by penetration including attempts	0.1	0.4	*	1.7	4.3	*	0.9	2.3	*
- Assault by penetration excluding attempts	0.1	0.2		1.3	3.3	*	0.7	1.8	*
Less serious sexual assault <sup>4</sup>	2.6	4.0	*	18.3	20.5	*	10.5	12.2	*
- Indecent exposure	0.8	1.3	*	8.4	11.5	*	4.6	6.4	*
- Sexual touching <sup>4</sup>	2.0	3.0	*	13.1	13.7		7.6	8.3	
Any sexual assault (including attempts) by a partner <sup>4</sup>	0.2	1.0	*	4.2	6.6	*	2.2	3.8	*
Serious sexual assault (including attempts) by a partner	0.0	0.2	*	2.2	4.0	*	1.1	2.1	*
Less serious sexual assault by a partner <sup>4</sup>	0.2	0.8	*	3.6	5.4	*	1.9	3.1	*
Any sexual assault (including attempts) by a family member <sup>4</sup>	0.1	0.3		1.3	2.0	*	0.7	1.1	*
Serious sexual assault (including attempts) by a family member	0.0	0.1		0.3	0.8	*	0.1	0.4	*
Less serious sexual assault by a family member <sup>4</sup>	0.1	0.3		1.3	1.7		0.7	1.0	
<b>Stalking<sup>5</sup></b>	<b>8.2</b>	<b>11.0</b>	*	<b>17.4</b>	<b>23.3</b>	*	<b>12.8</b>	<b>17.1</b>	*
- Letters/phone calls	5.5	8.1	*	11.7	17.1	*	8.6	12.6	*
- Waiting/following	2.3	4.1	*	9.1	12.7	*	5.7	8.4	*
- Cyber	1.7	3.0	*	3.4	4.1		2.6	3.6	*
Stalking by a partner <sup>5</sup>	3.0	3.3		7.9	9.4	*	5.5	6.4	*
Stalking by a family member <sup>5</sup>	0.5	1.4	*	1.0	2.9	*	0.8	2.2	*
<b>Unweighted base<sup>3</sup></b>	<b>4,334</b>	<b>4,292</b>		<b>5,412</b>	<b>5,213</b>		<b>9,746</b>	<b>9,505</b>	

1. Source: Crime Survey for England and Wales, Office for National Statistics

2. See Chapter 5 of the [User Guide](#) for definitions of the various types of intimate violence.

3. The bases given are for any domestic abuse; the bases for the other measures presented will be similar.

4. The experience of sexual threats is included in this category for the original questions and excluded from the survey in the new questions.

5. The experience of 'deliberately interfered with or damaged your property' is included in the original questions and excluded from the survey in the new questions.

6. The experience of 'threatened you with a weapon' and 'threaten to kill you' are included under threats in the new questions and under force in the original questions.

**Appendix table 2.4: Prevalence of intimate violence experienced in the last year by category among adults aged 16 to 59, without reclassification, CSEW 2012/13<sup>1,2</sup>**

England and Wales			Adults aged 16 to 59					
	Men		Women		Statistically significant difference	All		Statistically significant difference
	Original questions	New questions	Original questions	New questions		Original questions	New questions	
<i>Percentage who were victims once or more</i>								
<b>Any domestic abuse (partner or family non-physical abuse, threats, force, sexual assault or stalking)<sup>4,5</sup></b>	<b>4.3</b>	<b>4.4</b>	<b>7.0</b>	<b>8.8</b>	*	<b>5.7</b>	<b>6.6</b>	*
<b>Any partner abuse (non-physical abuse, threats, force, sexual assault or stalking)<sup>4,5</sup></b>	<b>3.1</b>	<b>3.0</b>	<b>5.1</b>	<b>6.7</b>	*	<b>4.1</b>	<b>4.9</b>	*
<b>Any family abuse (non-physical abuse, threats, force, sexual assault or stalking)<sup>4,5</sup></b>	<b>1.6</b>	<b>1.8</b>	<b>2.5</b>	<b>3.2</b>		<b>2.1</b>	<b>2.5</b>	
<b>Partner abuse - non-sexual</b>	<b>2.8</b>	<b>2.7</b>	<b>4.0</b>	<b>6.1</b>	*	<b>3.4</b>	<b>4.4</b>	*
Non-physical abuse (emotional, financial)	1.7	1.9	2.5	4.5	*	2.1	3.2	*
Threats or force	1.4	1.4	2.4	3.7	*	1.9	2.6	*
Threats <sup>6</sup>	0.2	0.6	1.1	3.0	*	0.7	1.8	*
Force <sup>6</sup>	1.3	1.1	2.0	2.1		1.6	1.6	
<b>Family abuse - non-sexual</b>	<b>1.5</b>	<b>1.8</b>	<b>2.2</b>	<b>2.7</b>		<b>1.9</b>	<b>2.2</b>	
Non-physical abuse (emotional, financial)	0.7	0.8	1.1	1.7	*	0.9	1.3	*
Threats or force	0.8	1.1	1.4	1.6		1.1	1.3	
Threats <sup>6</sup>	0.2	0.7	0.5	1.2	*	0.3	1.0	*
Force <sup>6</sup>	0.8	0.8	1.2	0.8		1.0	0.8	
<b>Any sexual assault (including attempts)<sup>4</sup></b>	<b>0.4</b>	<b>0.8</b>	<b>2.0</b>	<b>3.0</b>	*	<b>1.2</b>	<b>1.9</b>	*
Serious sexual assault including attempts	0.1	0.2	0.5	1.0	*	0.3	0.6	*
Serious sexual assault excluding attempts	0.1	0.1	0.3	0.6	*	0.2	0.3	
- Rape including attempts	0.1	0.1	0.3	0.8	*	0.2	0.4	*
- Rape excluding attempts	0.1	0.1	0.2	0.4	*	0.1	0.3	
- Assault by penetration including attempts	0.0	0.1	0.4	0.5		0.2	0.3	
- Assault by penetration excluding attempts	0.0	0.1	0.2	0.3		0.1	0.2	
Less serious sexual assault <sup>4</sup>	0.3	0.8	1.8	2.3	*	1.1	1.6	*
- Indecent exposure	0.1	0.2	0.4	1.1	*	0.2	0.7	*
- Sexual touching <sup>4</sup>	0.3	0.6	1.5	1.4		0.9	1.0	
Any sexual assault (including attempts) by a partner <sup>4</sup>	0.1	0.1	0.5	0.4		0.3	0.3	
Serious sexual assault (including attempts) by a partner	0.0	0.0	0.3	0.3		0.2	0.2	
Less serious sexual assault by a partner <sup>4</sup>	0.1	0.1	0.3	0.2		0.2	0.2	
Any sexual assault (including attempts) by a family member <sup>4</sup>	0.0	0.0	0.0	0.1		0.0	0.0	
Serious sexual assault (including attempts) by a family member	0.0	0.0	0.0	0.1		0.0	0.0	
Less serious sexual assault by a family member <sup>4</sup>	0.0	0.0	0.0	0.0		0.0	0.0	
<b>Stalking<sup>5</sup></b>	<b>1.9</b>	<b>2.6</b>	<b>4.0</b>	<b>4.7</b>		<b>3.0</b>	<b>3.6</b>	*
- Letters/phone calls	1.0	1.6	2.4	3.2	*	1.7	2.4	*
- Waiting/following	0.2	0.7	1.2	1.9	*	0.7	1.3	*
- Cyber	0.4	1.0	1.0	1.0		0.7	1.0	*
Stalking by a partner <sup>5</sup>	0.4	0.4	1.5	1.1		0.9	0.8	
Stalking by a family member <sup>5</sup>	0.1	0.2	0.3	0.7	*	0.2	0.4	*
<b>Unweighted base<sup>3</sup></b>	<b>4,285</b>	<b>4,284</b>	<b>5,237</b>	<b>5,184</b>		<b>9,522</b>	<b>9,468</b>	

1. Source: Crime Survey for England and Wales, Office for National Statistics

2. See Chapter 5 of the [User Guide](#) for definitions of the various types of intimate violence.

3. The bases given are for any domestic abuse; the bases for the other measures presented will be similar.

4. The experience of sexual threats is included in this category for the original questions and excluded from the survey in the new questions.

5. The experience of 'deliberately interfered with or damaged your property' is included in the original questions and excluded from the survey in the new questions.

6. The experience of 'threatened you with a weapon' and 'threaten to kill you' are included under threats in the new questions and under force in the original questions.



## Appendix 3 – Full IPV back series

Appendix table 3.1 Prevalence of intimate violence<sup>1,2</sup> since age 16 among men, by category, 2004/05 to 2013/14 CSEW

England and Wales		Adults aged 16 to 59									
		2004/05	2005/06	2006/07	2007/08 <sup>3</sup>	2008/09	2009/10	2010/11 <sup>4</sup>	2011/12 <sup>4</sup>	2012/13 <sup>4</sup>	2013/14
		Percentage victims once or more									
<b>Any domestic abuse (partner or family non-physical abuse, threats, force, sexual assault or stalking)<sup>5</sup></b>		23.9	23.7	24.0	..	16.5	15.8	16.9	17.8	16.4	14.7
<b>Any partner abuse (non-physical abuse, threats, force, sexual assault or stalking)<sup>5</sup></b>		19.7	19.6	19.9	..	13.1	12.8	13.9	14.4	12.8	10.9
<b>Any family abuse (non-physical abuse, threats, force, sexual assault or stalking)<sup>5</sup></b>		10.5	9.8	10.3	..	7.0	7.1	7.7	8.0	7.0	6.3
<b>Partner abuse - non-sexual<sup>6</sup></b>		15.8	15.5	16.0	15.1	10.0	9.9	10.0	0.0	10.9	9.6
Non-physical abuse (emotional, financial) <sup>6</sup>		8.6	8.6	9.0	8.9	5.8	5.9	5.7	6.0	6.1	4.8
Threats or force <sup>5</sup>		11.7	11.5	12.1	11.1	7.4	6.6	7.3	7.8	8.2	7.4
Threats <sup>6</sup>		5.4	5.5	5.4	5.1	3.8	3.5	3.4	3.9	4.2	3.3
Force <sup>6</sup>		10.2	10.1	10.6	9.7	6.4	5.8	6.4	6.6	6.9	6.7
<b>Family abuse - non-sexual<sup>6</sup></b>		8.1	7.6	8.0	6.9	5.5	5.5	5.5	5.8	6.0	5.5
Non-physical abuse (emotional, financial) <sup>6</sup>		4.0	3.9	4.1	3.5	2.9	2.7	2.6	2.5	2.7	2.5
Threats or force <sup>5</sup>		5.7	5.3	5.7	4.6	3.9	3.9	4.0	4.4	4.6	4.3
Threats <sup>6</sup>		3.0	3.1	3.6	2.7	2.5	2.7	2.2	3.0	2.8	2.6
Force <sup>6</sup>		4.5	4.0	4.3	3.5	3.1	2.9	3.4	3.2	3.6	3.5
<b>Any sexual assault (including attempts)<sup>5</sup></b>		5.2	5.7	5.9	4.7	4.3	3.8	3.9	4.2	4.2	3.6
Serious sexual assault including attempts <sup>5</sup>		0.8	0.8	0.9	0.9	0.9	0.5	0.7	0.8	0.6	0.5
Serious sexual assault excluding attempts <sup>5</sup>		0.6	0.6	0.6	0.6	0.7	0.4	0.5	0.6	0.4	0.4
- Rape including attempts <sup>5</sup>		0.5	0.6	0.6	0.6	0.6	0.3	0.5	0.4	0.5	0.3
- Rape excluding attempts <sup>5</sup>		0.4	0.5	0.4	0.4	0.6	0.3	0.4	0.3	0.3	0.2
- Assault by penetration including attempts <sup>5</sup>		1.1	0.7	1.1	1.1	1.5	0.7	0.3	1.3	0.4	0.4
- Assault by penetration excluding attempts <sup>5</sup>		0.4	0.3	0.6	0.4	0.6	0.4	0.2	0.7	0.2	0.3
Less serious sexual assault <sup>5</sup>		4.9	5.4	5.5	4.3	3.8	3.8	3.6	3.8	4.0	3.4
Any sexual assault (including attempts) by a partner <sup>5</sup>		2.2	2.1	2.1	2.3	2.1	1.8	2.1	1.7	1.0	0.6
Serious sexual assault (including attempts) by a partner <sup>5</sup>		1.1	1.0	0.9	1.2	1.2	0.4	1.1	1.2	0.2	0.1
Less serious sexual assault by a partner <sup>5</sup>		1.7	1.6	1.7	1.6	1.4	1.7	1.7	1.2	0.8	0.5
Any sexual assault (including attempts) by a family member <sup>5</sup>		0.4	0.4	0.4	0.2	0.5	0.3	0.6	0.0	0.3	0.3
Serious sexual assault (including attempts) by a family member <sup>5</sup>		0.1	0.0	0.0	0.1	0.2	0.1	0.2	0.0	0.1	0.0
Less serious sexual assault by a family member <sup>5</sup>		0.3	0.4	0.4	0.2	0.5	0.3	0.5	0.0	0.3	0.3
<b>Stalking<sup>5</sup></b>		19.3	16.9	15.8	..	12.4	11.7	11.3	14.2	11.0	9.8
Stalking by a partner <sup>5</sup>		3.7	3.8	3.6	..	3.3	3.2	3.4	3.8	3.3	2.7
Stalking by a family member <sup>5</sup>		1.4	1.2	1.5	..	1.0	1.3	1.5	1.6	1.4	1.2
<b>Unweighted base<sup>3</sup></b>		10,392	11,238	11,167	11,192	12,060	9,980	5,040	5,135	4,292	9,502

1. Source: Crime Survey for England and Wales, Office for National Statistics

2. See Chapter 5 of the [User Guide](#) for definitions of the various types of intimate violence.

3. The bases given are for any domestic abuse except for 2007/08 which is for partner abuse (non-sexual); the bases for the other measures presented will be similar.

4. The sample size is lower from 2010/11 to 2012/13 due to use of a split-sample experiment.

5. Estimates are calculated from the new questions for 2012/13 and 2013/14. Previous estimates are calculated from the original questions and an adjustment applied to make them comparable to the new questions.

6. Estimates are calculated from the new questions for 2010/11 onwards. Previous year's estimates are calculated from the original questions and an adjustment applied to make them comparable to the new questions.

7. Estimates derived from new estimates are shaded grey.

: Denotes 'not applicable'.

**Appendix table 3.2 Prevalence of intimate violence<sup>1,2</sup> since age 16 among women, by category, 2004/05 to 2013/14 CSEW**

England and Wales											Adults aged 16 to 59	
	2004/05	2005/06	2006/07	2007/08 <sup>3</sup>	2008/09	2009/10	2010/11 <sup>4</sup>	2011/12 <sup>4</sup>	2012/13 <sup>4</sup>	2013/14		
	Percentage victims once or more											
<b>Any domestic abuse (partner or family non-physical abuse, threats, force, sexual assault or stalking)<sup>5</sup></b>	<b>34.3</b>	<b>35.1</b>	<b>34.5</b>	..	<b>28.4</b>	<b>28.7</b>	<b>29.2</b>	<b>30.3</b>	<b>29.4</b>	<b>28.3</b>		
<b>Any partner abuse (non-physical abuse, threats, force, sexual assault or stalking)<sup>5</sup></b>	<b>29.8</b>	<b>30.5</b>	<b>29.9</b>	..	<b>24.5</b>	<b>25.1</b>	<b>25.7</b>	<b>26.3</b>	<b>25.7</b>	<b>24.8</b>		
<b>Any family abuse (non-physical abuse, threats, force, sexual assault or stalking)<sup>5</sup></b>	<b>17.2</b>	<b>16.6</b>	<b>16.5</b>	..	<b>12.7</b>	<b>12.7</b>	<b>12.5</b>	<b>13.4</b>	<b>11.5</b>	<b>10.8</b>		
<b>Partner abuse - non-sexual<sup>6</sup></b>	<b>26.5</b>	<b>26.6</b>	<b>26.6</b>	<b>25.4</b>	<b>21.3</b>	<b>21.5</b>	<b>22.9</b>	<b>22.6</b>	<b>22.5</b>	<b>22.0</b>		
Non-physical abuse (emotional, financial) <sup>6</sup>	17.5	17.2	17.1	17.0	13.8	13.8	15.2	14.9	15.4	14.9		
Threats or force <sup>6</sup>	21.7	22.0	22.4	20.9	18.5	18.5	19.4	19.7	19.6	18.9		
Threats <sup>6</sup>	16.3	16.2	16.7	15.8	15.3	15.3	15.6	15.9	15.8	15.1		
Force <sup>6</sup>	19.1	19.2	19.2	17.9	16.2	16.0	16.9	17.0	17.0	16.3		
<b>Family abuse - non-sexual<sup>6</sup></b>	<b>12.4</b>	<b>12.0</b>	<b>12.1</b>	<b>10.0</b>	<b>9.1</b>	<b>9.3</b>	<b>8.9</b>	<b>8.2</b>	<b>9.1</b>	<b>8.2</b>		
Non-physical abuse (emotional, financial) <sup>6</sup>	7.2	7.2	7.2	5.9	5.4	5.4	5.2	4.8	5.2	4.4		
Threats or force <sup>6</sup>	8.6	8.5	8.5	6.8	6.8	6.8	6.5	6.0	6.9	6.3		
Threats <sup>6</sup>	5.3	5.6	5.5	4.1	4.8	4.5	4.5	4.2	4.7	4.3		
Force <sup>6</sup>	6.9	6.7	6.7	5.5	5.3	5.4	4.8	4.7	5.4	4.8		
<b>Any sexual assault (including attempts)<sup>5</sup></b>	<b>26.8</b>	<b>27.7</b>	<b>27.7</b>	<b>26.8</b>	<b>23.0</b>	<b>22.6</b>	<b>21.6</b>	<b>22.4</b>	<b>21.9</b>	<b>19.9</b>		
Serious sexual assault including attempts <sup>5</sup>	7.6	7.7	7.5	7.1	6.4	7.0	6.9	7.2	6.6	6.1		
Serious sexual assault excluding attempts <sup>5</sup>	6.4	6.5	6.3	6.1	5.6	6.2	5.9	6.3	5.4	5.2		
- Rape including attempts <sup>5</sup>	6.8	6.8	6.6	6.3	5.6	6.4	6.2	6.3	5.8	5.5		
- Rape excluding attempts <sup>5</sup>	5.4	5.3	5.3	5.2	4.7	5.3	5.1	5.4	4.7	4.7		
- Assault by penetration including attempts <sup>5</sup>	5.0	4.9	5.0	4.5	4.8	4.4	4.5	5.3	4.3	3.8		
- Assault by penetration excluding attempts <sup>5</sup>	4.2	4.2	4.0	3.5	4.1	4.0	3.6	4.1	3.3	3.0		
Less serious sexual assault <sup>5</sup>	25.1	25.9	26.1	25.0	21.7	21.3	20.0	21.1	20.5	18.8		
Any sexual assault (including attempts) by a partner <sup>5</sup>	8.0	8.7	8.3	8.1	7.0	7.8	7.3	7.5	6.6	5.4		
Serious sexual assault (including attempts) by a partner <sup>5</sup>	5.1	5.5	5.3	5.0	4.2	5.0	4.9	4.9	4.0	3.4		
Less serious sexual assault by a partner <sup>5</sup>	5.9	7.0	6.2	6.4	5.5	6.3	6.0	5.8	5.4	4.5		
Any sexual assault (including attempts) by a family member <sup>5</sup>	2.1	1.7	1.8	1.7	1.8	1.6	1.7	1.5	2.0	1.9		
Serious sexual assault (including attempts) by a family member <sup>5</sup>	1.2	0.7	0.9	0.7	1.0	0.9	1.3	1.0	0.8	0.6		
Less serious sexual assault by a family member <sup>5</sup>	1.7	1.4	1.5	1.4	1.4	1.3	1.5	1.2	1.7	1.6		
<b>Stalking<sup>5</sup></b>	<b>30.6</b>	<b>30.2</b>	<b>29.4</b>	..	<b>25.5</b>	<b>24.3</b>	<b>23.3</b>	<b>24.3</b>	<b>23.3</b>	<b>21.5</b>		
Stalking by a partner <sup>5</sup>	8.5	9.4	9.2	..	8.4	8.8	9.0	9.4	9.4	9.2		
Stalking by a family member <sup>5</sup>	2.0	2.1	2.1	..	2.0	1.8	1.9	2.7	2.9	2.9		
<b>Unweighted base<sup>3</sup></b>	<b>12,807</b>	<b>13,676</b>	<b>13,108</b>	<b>13,117</b>	<b>14,288</b>	<b>11,995</b>	<b>6,123</b>	<b>5,998</b>	<b>5,213</b>	<b>11,248</b>		

1. Source: Crime Survey for England and Wales, Office for National Statistics

2. See Chapter 5 of the [User Guide](#) for definitions of the various types of intimate violence.

3. The bases given are for any domestic abuse except for 2007/08 which is for partner abuse (non-sexual); the bases for the other measures presented will be similar.

4. The sample size is lower from 2010/11 to 2012/13 due to use of a split-sample experiment.

5. Estimates are calculated from the new questions for 2012/13 and 2013/14. Previous estimates are calculated from the original questions and an adjustment applied to make them comparable to the new questions.

6. Estimates are calculated from the new questions for 2010/11 onwards. Previous year's estimates are calculated from the original questions and an adjustment applied to make them comparable to the new questions.

7. Estimates derived from new estimates are shaded grey.

: Denotes 'not applicable'.

**Appendix table 3.3 Prevalence of intimate violence<sup>1,2</sup> since age 16, by category, 2004/05 to 2013/14 CSEW**

England and Wales											Adults aged 16 to 59	
	2004/05	2005/06	2006/07	2007/08 <sup>3</sup>	2008/09	2009/10	2010/11 <sup>4</sup>	2011/12 <sup>4</sup>	2012/13 <sup>4</sup>	2013/14		
	Percentage victims once or more											
<b>Any domestic abuse (partner or family non-physical abuse, threats, force, sexual assault or stalking)<sup>5</sup></b>	<b>29.0</b>	<b>29.3</b>	<b>29.2</b>	..	<b>22.4</b>	<b>22.2</b>	<b>23.0</b>	<b>24.0</b>	<b>22.9</b>	<b>21.5</b>		
<b>Any partner abuse (non-physical abuse, threats, force, sexual assault or stalking)<sup>5</sup></b>	<b>24.6</b>	<b>24.9</b>	<b>24.8</b>	..	<b>18.7</b>	<b>18.9</b>	<b>19.8</b>	<b>20.2</b>	<b>19.3</b>	<b>17.9</b>		
<b>Any family abuse (non-physical abuse, threats, force, sexual assault or stalking)<sup>5</sup></b>	<b>13.9</b>	<b>13.2</b>	<b>13.4</b>	..	<b>9.8</b>	<b>9.8</b>	<b>10.1</b>	<b>10.7</b>	<b>9.2</b>	<b>8.6</b>		
<b>Partner abuse - non-sexual<sup>6</sup></b>	<b>21.2</b>	<b>21.2</b>	<b>21.3</b>	<b>20.4</b>	<b>15.7</b>	<b>15.6</b>	<b>16.5</b>	<b>16.7</b>	<b>16.7</b>	<b>15.8</b>		
Non-physical abuse (emotional, financial) <sup>6</sup>	13.2	13.0	13.2	13.1	9.8	9.9	10.5	10.5	10.8	9.9		
Threats or force <sup>6</sup>	16.7	16.8	17.2	16.0	12.9	12.5	13.4	13.8	13.9	13.2		
Threats <sup>6</sup>	10.7	10.7	10.9	10.4	9.5	9.4	9.5	9.9	10.0	9.2		
Force <sup>6</sup>	14.7	14.7	14.9	13.8	11.3	10.9	11.7	11.8	12.0	11.6		
<b>Family abuse - non-sexual<sup>6</sup></b>	<b>10.3</b>	<b>9.8</b>	<b>10.0</b>	<b>8.5</b>	<b>7.3</b>	<b>7.3</b>	<b>7.2</b>	<b>7.0</b>	<b>7.6</b>	<b>6.9</b>		
Non-physical abuse (emotional, financial) <sup>6</sup>	5.6	5.6	5.7	4.7	4.1	4.1	3.9	3.6	4.0	3.5		
Threats or force <sup>6</sup>	7.1	6.9	7.1	5.7	5.3	5.3	5.2	5.2	5.7	5.3		
Threats <sup>6</sup>	4.1	4.4	4.5	3.4	3.7	3.6	3.4	3.6	3.8	3.5		
Force <sup>6</sup>	5.7	5.4	5.5	4.5	4.2	4.1	4.1	4.0	4.5	4.2		
<b>Any sexual assault (including attempts)<sup>5</sup></b>	<b>16.0</b>	<b>16.7</b>	<b>16.8</b>	<b>15.8</b>	<b>13.7</b>	<b>13.2</b>	<b>12.8</b>	<b>13.3</b>	<b>13.1</b>	<b>11.8</b>		
Serious sexual assault including attempts <sup>5</sup>	4.2	4.3	4.2	4.0	3.7	3.7	3.8	4.0	3.6	3.3		
Serious sexual assault excluding attempts <sup>5</sup>	3.5	3.5	3.4	3.4	3.2	3.3	3.2	3.4	2.9	2.8		
- Rape including attempts <sup>5</sup>	3.6	3.7	3.6	3.5	3.1	3.4	3.3	3.4	3.1	2.9		
- Rape excluding attempts <sup>5</sup>	2.9	2.9	2.9	2.8	2.6	2.8	2.8	2.8	2.5	2.5		
- Assault by penetration including attempts <sup>5</sup>	2.9	2.7	2.9	2.6	2.9	2.5	2.4	3.1	2.3	2.1		
- Assault by penetration excluding attempts <sup>5</sup>	2.3	2.2	2.3	2.0	2.3	2.2	1.9	2.4	1.8	1.6		
Less serious sexual assault <sup>5</sup>	15.0	15.7	15.8	14.8	12.8	12.6	11.9	12.5	12.2	11.2		
Any sexual assault (including attempts) by a partner <sup>5</sup>	4.8	5.2	5.0	4.9	4.2	4.6	4.4	4.4	3.8	3.0		
Serious sexual assault (including attempts) by a partner <sup>5</sup>	2.8	3.1	2.9	2.8	2.4	2.7	2.7	2.8	2.1	1.8		
Less serious sexual assault by a partner <sup>5</sup>	3.6	4.2	3.8	3.8	3.3	3.8	3.7	3.4	3.1	2.5		
Any sexual assault (including attempts) by a family member <sup>5</sup>	1.2	1.0	1.1	1.0	1.1	0.9	1.1	0.8	1.1	1.1		
Serious sexual assault (including attempts) by a family member <sup>5</sup>	0.7	0.4	0.5	0.4	0.6	0.5	0.7	0.5	0.4	0.3		
Less serious sexual assault by a family member <sup>5</sup>	1.0	0.9	0.9	0.8	0.9	0.8	0.9	0.7	1.0	0.9		
<b>Stalking<sup>5</sup></b>	<b>24.9</b>	<b>23.6</b>	<b>22.6</b>	..	<b>19.0</b>	<b>18.0</b>	<b>17.4</b>	<b>19.2</b>	<b>17.1</b>	<b>15.7</b>		
Stalking by a partner <sup>5</sup>	6.1	6.6	6.4	..	5.9	6.0	6.2	6.6	6.4	6.0		
Stalking by a family member <sup>5</sup>	1.7	1.6	1.8	..	1.5	1.5	1.7	2.1	2.2	2.0		
<b>Unweighted base<sup>3</sup></b>	<b>23,199</b>	<b>24,914</b>	<b>24,275</b>	<b>24,309</b>	<b>26,348</b>	<b>21,975</b>	<b>11,163</b>	<b>11,133</b>	<b>9,505</b>	<b>20,750</b>		

1. Source: Crime Survey for England and Wales, Office for National Statistics

2. See Chapter 5 of the [User Guide](#) for definitions of the various types of intimate violence.

3. The bases given are for any domestic abuse except for 2007/08 which is for partner abuse (non-sexual); the bases for the other measures presented will be similar.

4. The sample size is lower from 2010/11 to 2012/13 due to use of a split-sample experiment.

5. Estimates are calculated from the new questions for 2012/13 and 2013/14. Previous estimates are calculated from the original questions and an adjustment applied to make them comparable to the new questions.

6. Estimates are calculated from the new questions for 2010/11 onwards. Previous year's estimates are calculated from the original questions and an adjustment applied to make them comparable to the new questions.

7. Estimates derived from new estimates are shaded grey.

: Denotes 'not applicable'.

**Appendix table 3.4 Prevalence of intimate violence<sup>1,2</sup> in the last year among men, by category, 2004/05 to 2013/14 CSEW**

England and Wales										Adults aged 16 to 59
	2004/05	2005/06	2006/07	2007/08 <sup>3</sup>	2008/09	2009/10	2010/11 <sup>4</sup>	2011/12 <sup>4</sup>	2012/13 <sup>4</sup>	2013/14
	Percentage victims once or more									
<b>Any domestic abuse (partner or family non-physical abuse, threats, force, sexual assault or stalking)<sup>5</sup></b>	<b>6.5</b>	<b>6.4</b>	<b>6.5</b>	:	<b>4.2</b>	<b>4.1</b>	<b>4.8</b>	<b>4.9</b>	<b>4.4</b>	<b>4.5</b>
<b>Any partner abuse (non-physical abuse, threats, force, sexual assault or stalking)<sup>5</sup></b>	<b>4.9</b>	<b>4.8</b>	<b>4.9</b>	:	<b>3.0</b>	<b>3.1</b>	<b>3.6</b>	<b>3.5</b>	<b>3.0</b>	<b>3.0</b>
<b>Any family abuse (non-physical abuse, threats, force, sexual assault or stalking)<sup>5</sup></b>	<b>2.5</b>	<b>2.4</b>	<b>2.6</b>	:	<b>2.0</b>	<b>1.8</b>	<b>2.0</b>	<b>2.0</b>	<b>1.8</b>	<b>1.8</b>
<b>Partner abuse - non-sexual<sup>6</sup></b>	<b>4.6</b>	<b>4.5</b>	<b>4.9</b>	<b>4.7</b>	<b>2.8</b>	<b>2.9</b>	<b>3.1</b>	<b>3.8</b>	<b>2.7</b>	<b>2.8</b>
Non-physical abuse (emotional, financial) <sup>6</sup>	3.2	3.2	3.5	3.3	2.1	2.4	2.1	2.6	1.9	1.8
Threats or force <sup>6</sup>	2.5	2.2	2.6	2.5	1.4	1.3	1.5	2.1	1.4	1.5
Threats <sup>6</sup>	1.7	1.2	1.4	1.6	1.1	1.1	0.7	1.2	0.6	0.6
Force <sup>6</sup>	1.9	1.6	2.0	1.8	1.0	0.9	1.1	1.4	1.1	1.2
<b>Family abuse - non-sexual<sup>6</sup></b>	<b>2.3</b>	<b>2.1</b>	<b>2.3</b>	<b>1.5</b>	<b>1.9</b>	<b>1.6</b>	<b>1.8</b>	<b>1.7</b>	<b>1.8</b>	<b>1.7</b>
Non-physical abuse (emotional, financial) <sup>6</sup>	1.4	1.4	1.6	1.1	1.1	1.2	1.1	0.9	0.8	0.9
Threats or force <sup>6</sup>	1.2	1.1	1.1	0.7	1.1	0.7	1.0	1.0	1.1	1.0
Threats <sup>6</sup>	1.0	0.8	0.9	0.6	0.8	0.9	0.7	0.8	0.7	0.6
Force <sup>6</sup>	0.6	0.6	0.6	0.4	0.7	0.3	0.5	0.5	0.8	0.6
<b>Any sexual assault (including attempts)<sup>5</sup></b>	<b>1.0</b>	<b>0.9</b>	<b>1.0</b>	<b>0.6</b>	<b>0.5</b>	<b>0.8</b>	<b>0.8</b>	<b>0.6</b>	<b>0.8</b>	<b>0.7</b>
Serious sexual assault including attempts <sup>5</sup>	0.2	0.1	0.1	0.1	0.1	0.1	0.2	0.0	0.2	0.0
Serious sexual assault excluding attempts <sup>5</sup>	0.1	0.0	0.0	0.1	0.0	0.0	0.1	0.0	0.1	0.0
- Rape including attempts <sup>5</sup>	0.1	0.1	0.0	0.1	0.0	0.0	0.1	0.0	0.1	0.0
- Rape excluding attempts <sup>5</sup>	0.0	0.0	0.0	0.0	0.0	0.0	0.1	0.0	0.1	0.0
- Assault by penetration including attempts <sup>5</sup>	0.1	0.0	0.0	0.0	0.0	0.0	0.0	0.0	0.1	0.0
- Assault by penetration excluding attempts <sup>5</sup>	0.0	0.0	0.0	0.0	0.0	0.0	0.0	0.0	0.1	0.0
Less serious sexual assault <sup>5</sup>	1.2	1.1	1.2	0.7	0.7	1.0	0.9	0.8	0.8	0.7
<b>Any sexual assault (including attempts) by a partner<sup>5</sup></b>	<b>0.2</b>	<b>0.0</b>	<b>0.2</b>	<b>0.2</b>	<b>0.2</b>	<b>0.2</b>	<b>0.1</b>	<b>0.1</b>	<b>0.1</b>	<b>0.1</b>
Serious sexual assault (including attempts) by a partner <sup>5</sup>	0.1	0.0	0.0	0.1	0.0	0.0	0.0	0.0	0.0	0.0
Less serious sexual assault by a partner <sup>5</sup>	0.2	0.0	0.1	0.1	0.2	0.2	0.2	0.0	0.1	0.1
<b>Any sexual assault (including attempts) by a family member<sup>5</sup></b>	<b>0.0</b>	<b>0.0</b>	<b>0.0</b>	<b>0.0</b>	<b>0.0</b>	<b>0.0</b>	<b>0.0</b>	<b>0.0</b>	<b>0.0</b>	<b>0.0</b>
Serious sexual assault (including attempts) by a family member <sup>5</sup>	0.0	0.0	0.0	0.0	0.0	0.0	0.0	0.0	0.0	0.0
Less serious sexual assault by a family member <sup>5</sup>	0.0	0.0	0.0	0.0	0.0	0.0	0.0	0.0	0.0	0.0
<b>Stalking<sup>5</sup></b>	<b>9.2</b>	<b>6.7</b>	<b>5.8</b>	:	<b>3.7</b>	<b>3.9</b>	<b>4.1</b>	<b>4.1</b>	<b>2.6</b>	<b>2.5</b>
Stalking by a partner <sup>5</sup>	1.1	1.0	0.9	:	0.7	0.8	1.2	0.8	0.4	0.5
Stalking by a family member <sup>5</sup>	0.3	0.4	0.5	:	0.2	0.3	0.3	0.3	0.2	0.2
<b>Unweighted base<sup>3</sup></b>	<b>10,228</b>	<b>11,028</b>	<b>11,008</b>	<b>11,104</b>	<b>11,890</b>	<b>9,896</b>	<b>4,969</b>	<b>5,072</b>	<b>4,284</b>	<b>9,466</b>

1. Source: Crime Survey for England and Wales, Office for National Statistics

2. See Chapter 5 of the [User Guide](#) for definitions of the various types of intimate violence.

3. The bases given are for any domestic abuse except for 2007/08 which is for partner abuse (non-sexual); the bases for the other measures presented will be similar.

4. The sample size is lower from 2010/11 to 2012/13 due to use of a split-sample experiment.

5. Estimates are calculated from the new questions for 2012/13 and 2013/14. Previous estimates are calculated from the original questions and an adjustment applied to make them comparable to the new questions.

6. Estimates are calculated from the new questions for 2010/11 onwards. Previous year's estimates are calculated from the original questions and an adjustment applied to make them comparable to the new questions.

7. Estimates derived from new estimates are shaded grey.

: Denotes 'not applicable'.

**Appendix table 3.5 Prevalence of intimate violence<sup>1,2</sup> in the last year among women, by category, 2004/05 to 2013/14 CSEW**

England and Wales										Adults aged 16 to 59
	2004/05	2005/06	2006/07	2007/08 <sup>3</sup>	2008/09	2009/10	2010/11 <sup>4</sup>	2011/12 <sup>4</sup>	2012/13 <sup>4</sup>	2013/14
	Percentage victims once or more									
<b>Any domestic abuse (partner or family non-physical abuse, threats, force, sexual assault or stalking)<sup>5</sup></b>	11.1	11.5	11.0	:	8.9	9.2	9.1	9.1	8.8	8.5
<b>Any partner abuse (non-physical abuse, threats, force, sexual assault or stalking)<sup>5</sup></b>	8.7	9.2	8.7	:	7.0	7.4	7.4	6.9	6.7	6.8
<b>Any family abuse (non-physical abuse, threats, force, sexual assault or stalking)<sup>5</sup></b>	4.3	4.4	4.3	:	3.3	3.2	3.1	3.4	3.2	2.5
<b>Partner abuse - non-sexual<sup>6</sup></b>	8.6	8.8	8.6	7.5	6.5	7.2	6.4	7.0	6.1	5.9
Non-physical abuse (emotional, financial) <sup>6</sup>	5.9	5.6	5.5	5.3	4.2	4.6	4.4	4.7	4.5	4.2
Threats or force <sup>6</sup>	5.6	6.1	5.9	4.6	4.5	4.9	4.2	4.5	3.7	3.6
Threats <sup>6</sup>	4.2	4.8	4.7	4.0	3.3	4.1	3.3	3.4	3.0	2.8
Force <sup>6</sup>	3.6	3.9	3.5	2.9	2.9	2.9	2.8	3.0	2.1	2.0
<b>Family abuse - non-sexual<sup>6</sup></b>	3.8	3.8	3.9	2.6	2.8	2.8	2.8	2.7	2.7	2.2
Non-physical abuse (emotional, financial) <sup>6</sup>	2.3	2.3	2.4	1.6	1.7	1.8	1.6	1.7	1.7	1.4
Threats or force <sup>6</sup>	2.3	2.6	2.5	1.7	1.9	1.7	1.7	1.6	1.6	1.3
Threats <sup>6</sup>	1.4	1.7	1.6	1.0	1.1	1.1	1.2	1.1	1.2	1.0
Force <sup>6</sup>	1.7	1.9	1.9	1.3	1.5	1.2	1.2	0.9	0.8	0.7
<b>Any sexual assault (including attempts)<sup>5</sup></b>	4.2	5.0	4.8	4.5	3.7	3.4	3.8	4.2	3.0	2.2
Serious sexual assault including attempts <sup>5</sup>	1.0	1.3	1.2	1.2	1.0	0.8	1.2	1.3	1.0	0.7
Serious sexual assault excluding attempts <sup>5</sup>	0.7	1.1	0.9	0.9	0.7	0.7	1.0	0.8	0.6	0.4
- Rape including attempts <sup>5</sup>	0.9	1.4	1.2	1.2	0.9	1.0	1.3	1.2	0.8	0.5
- Rape excluding attempts <sup>5</sup>	0.7	1.1	1.0	0.8	0.8	0.8	1.1	0.9	0.4	0.3
- Assault by penetration including attempts <sup>5</sup>	0.3	0.4	0.3	0.4	0.3	0.2	0.3	0.5	0.5	0.5
- Assault by penetration excluding attempts <sup>5</sup>	0.3	0.5	0.3	0.4	0.3	0.2	0.3	0.3	0.3	0.3
Less serious sexual assault <sup>5</sup>	3.4	3.9	4.0	3.5	3.0	2.8	2.9	3.3	2.3	1.8
<b>Any sexual assault (including attempts) by a partner<sup>5</sup></b>	0.5	0.6	0.5	0.5	0.4	0.4	0.6	0.5	0.4	0.4
Serious sexual assault (including attempts) by a partner <sup>5</sup>	0.3	0.3	0.3	0.3	0.2	0.2	0.4	0.3	0.3	0.2
Less serious sexual assault by a partner <sup>5</sup>	0.5	0.6	0.5	0.5	0.3	0.4	0.4	0.4	0.2	0.2
<b>Any sexual assault (including attempts) by a family member<sup>5</sup></b>	0.1	0.1	0.1	0.1	0.1	0.1	0.2	0.1	0.1	0.1
Serious sexual assault (including attempts) by a family member <sup>5</sup>	0.0	0.0	0.0	0.0	0.0	0.0	0.1	0.0	0.1	0.0
Less serious sexual assault by a family member <sup>5</sup>	0.1	0.0	0.1	0.1	0.0	0.0	0.1	0.0	0.0	0.0
<b>Stalking<sup>5</sup></b>	7.5	7.4	6.8	:	4.7	4.8	4.6	4.8	4.7	4.4
Stalking by a partner <sup>5</sup>	1.2	1.4	1.4	:	1.0	1.1	1.3	1.1	1.1	1.6
Stalking by a family member <sup>5</sup>	0.5	0.7	0.5	:	0.4	0.5	0.5	0.8	0.7	0.5
<b>Unweighted base<sup>3</sup></b>	12,400	13,282	12,754	12,991	13,786	11,734	5,929	5,830	5,184	11,178

1. Source: Crime Survey for England and Wales, Office for National Statistics

2. See Chapter 5 of the [User Guide](#) for definitions of the various types of intimate violence.

3. The bases given are for any domestic abuse except for 2007/08 which is for partner abuse (non-sexual); the bases for the other measures presented will be similar.

4. The sample size is lower from 2010/11 to 2012/13 due to use of a split-sample experiment.

5. Estimates are calculated from the new questions for 2012/13 and 2013/14. Previous estimates are calculated from the original questions and an adjustment applied to make them comparable to the new questions.

6. Estimates are calculated from the new questions for 2010/11 onwards. Previous year's estimates are calculated from the original questions and an adjustment applied to make them comparable to the new questions.

7. Estimates derived from new estimates are shaded grey.

: Denotes 'not applicable'.



**Appendix table 3.6 Prevalence of intimate violence<sup>1,2</sup> in the last year, by category, 2004/05 to 2013/14 CSEW**

England and Wales											Adults aged 16 to 59
	2004/05	2005/06	2006/07	2007/08 <sup>3</sup>	2008/09	2009/10	2010/11 <sup>4</sup>	2011/12 <sup>4</sup>	2012/13 <sup>4</sup>	2013/14	
	<i>Percentage victims once or more</i>										
<b>Any domestic abuse (partner or family non-physical abuse, threats, force, sexual assault or stalking)<sup>5</sup></b>	<b>8.9</b>	<b>9.0</b>	<b>8.8</b>	:	<b>6.5</b>	<b>6.6</b>	<b>6.9</b>	<b>7.0</b>	<b>6.6</b>	<b>6.5</b>	
<b>Any partner abuse (non-physical abuse, threats, force, sexual assault or stalking)<sup>5</sup></b>	<b>6.9</b>	<b>7.1</b>	<b>6.9</b>	:	<b>4.9</b>	<b>5.2</b>	<b>5.5</b>	<b>5.2</b>	<b>4.9</b>	<b>4.9</b>	
<b>Any family abuse (non-physical abuse, threats, force, sexual assault or stalking)<sup>5</sup></b>	<b>3.4</b>	<b>3.4</b>	<b>3.5</b>	:	<b>2.7</b>	<b>2.5</b>	<b>2.6</b>	<b>2.7</b>	<b>2.5</b>	<b>2.2</b>	
<b>Partner abuse - non-sexual<sup>6</sup></b>	<b>6.7</b>	<b>6.7</b>	<b>6.8</b>	<b>6.2</b>	<b>4.7</b>	<b>5.0</b>	<b>4.8</b>	<b>5.4</b>	<b>4.4</b>	<b>4.4</b>	
Non-physical abuse (emotional, financial) <sup>6</sup>	4.5	4.5	4.5	4.4	3.2	3.5	3.2	3.7	3.2	3.0	
Threats or force <sup>6</sup>	4.1	4.2	4.3	3.7	2.9	3.0	2.8	3.3	2.6	2.6	
Threats <sup>6</sup>	2.9	3.0	3.0	2.7	2.2	2.6	2.0	2.3	1.8	1.7	
Force <sup>6</sup>	2.8	2.7	2.8	2.4	1.9	1.9	2.0	2.2	1.6	1.6	
<b>Family abuse - non-sexual<sup>6</sup></b>	<b>3.0</b>	<b>3.0</b>	<b>3.1</b>	<b>2.1</b>	<b>2.4</b>	<b>2.2</b>	<b>2.3</b>	<b>2.2</b>	<b>2.2</b>	<b>2.0</b>	
Non-physical abuse (emotional, financial) <sup>6</sup>	1.9	1.8	2.0	1.3	1.4	1.5	1.4	1.3	1.3	1.2	
Threats or force <sup>6</sup>	1.7	1.8	1.8	1.1	1.5	1.1	1.3	1.3	1.3	1.1	
Threats <sup>6</sup>	1.2	1.3	1.2	0.8	1.0	1.0	1.0	0.9	1.0	0.8	
Force <sup>6</sup>	1.0	1.1	1.1	0.7	1.0	0.7	0.9	0.7	0.8	0.6	
<b>Any sexual assault (including attempts)<sup>5</sup></b>	<b>2.6</b>	<b>3.0</b>	<b>2.9</b>	<b>2.6</b>	<b>2.2</b>	<b>2.1</b>	<b>2.3</b>	<b>2.4</b>	<b>1.9</b>	<b>1.5</b>	
Serious sexual assault including attempts <sup>5</sup>	0.6	0.7	0.6	0.7	0.5	0.4	0.7	0.6	0.6	0.4	
Serious sexual assault excluding attempts <sup>5</sup>	0.4	0.5	0.4	0.4	0.3	0.3	0.5	0.4	0.3	0.2	
- Rape including attempts <sup>5</sup>	0.5	0.6	0.5	0.6	0.4	0.4	0.6	0.5	0.4	0.3	
- Rape excluding attempts <sup>5</sup>	0.3	0.4	0.4	0.3	0.3	0.3	0.5	0.3	0.3	0.2	
- Assault by penetration including attempts <sup>5</sup>	0.3	0.3	0.2	0.3	0.2	0.1	0.2	0.3	0.3	0.3	
- Assault by penetration excluding attempts <sup>5</sup>	0.2	0.3	0.2	0.3	0.2	0.2	0.2	0.2	0.2	0.2	
Less serious sexual assault <sup>5</sup>	2.3	2.5	2.6	2.2	1.9	1.9	1.9	2.1	1.6	1.2	
<b>Any sexual assault (including attempts) by a partner<sup>5</sup></b>	<b>0.3</b>	<b>0.3</b>	<b>0.4</b>	<b>0.3</b>	<b>0.3</b>	<b>0.3</b>	<b>0.4</b>	<b>0.3</b>	<b>0.3</b>	<b>0.2</b>	
Serious sexual assault (including attempts) by a partner <sup>5</sup>	0.2	0.2	0.2	0.2	0.2	0.1	0.2	0.2	0.2	0.1	
Less serious sexual assault by a partner <sup>5</sup>	0.3	0.3	0.3	0.3	0.2	0.3	0.3	0.2	0.2	0.1	
<b>Any sexual assault (including attempts) by a family member<sup>5</sup></b>	<b>0.0</b>	<b>0.0</b>	<b>0.0</b>	<b>0.0</b>	<b>0.0</b>	<b>0.0</b>	<b>0.1</b>	<b>0.0</b>	<b>0.0</b>	<b>0.1</b>	
Serious sexual assault (including attempts) by a family member <sup>5</sup>	0.0	0.0	0.0	0.0	0.0	0.0	0.1	0.0	0.0	0.0	
Less serious sexual assault by a family member <sup>5</sup>	0.0	0.0	0.0	0.0	0.0	0.0	0.0	0.0	0.0	0.0	
<b>Stalking<sup>5</sup></b>	<b>7.8</b>	<b>6.8</b>	<b>6.1</b>	:	<b>4.1</b>	<b>4.2</b>	<b>4.2</b>	<b>4.3</b>	<b>3.6</b>	<b>3.5</b>	
Stalking by a partner <sup>5</sup>	1.1	1.2	1.1	:	0.8	0.9	1.2	0.9	0.8	1.0	
Stalking by a family member <sup>5</sup>	0.4	0.5	0.5	:	0.3	0.4	0.4	0.6	0.4	0.3	
<b>Unweighted base<sup>3</sup></b>	<b>22,628</b>	<b>24,310</b>	<b>23,762</b>	<b>24,095</b>	<b>25,676</b>	<b>21,630</b>	<b>10,898</b>	<b>10,902</b>	<b>9,468</b>	<b>20,644</b>	

1. Source: Crime Survey for England and Wales, Office for National Statistics

2. See Chapter 5 of the [User Guide](#) for definitions of the various types of intimate violence.

3. The bases given are for any domestic abuse except for 2007/08 which is for partner abuse (non-sexual); the bases for the other measures presented will be similar.

4. The sample size is lower from 2010/11 to 2012/13 due to use of a split-sample experiment.

5. Estimates are calculated from the new questions for 2012/13 and 2013/14. Previous estimates are calculated from the original questions and an adjustment applied to make them comparable to the new questions.

6. Estimates are calculated from the new questions for 2010/11 onwards. Previous year's estimates are calculated from the original questions and an adjustment applied to make them comparable to the new questions.

7. Estimates derived from new estimates are shaded grey.

: Denotes 'not applicable'.

## References

Campbell-Hall, V., Clegg, S., de Guzman, V. and Bolling, K., 2010, '[British Crime Survey – Interpersonal violence question development](#)', London:TNS-BMRB

Hall, P. and Smith, K. (Ed.), 2011, '[Analysis of the 2010/11 British Crime Survey intimate personal violence split sample experiment](#)'

Home Office Statistics, 2012, '[Consultation on the British Crime Survey Intimate Personal Violence questionnaire: Response from Home Office Statistics](#)'