

**LABOUR FORCE SURVEY
PERFORMANCE AND QUALITY
MONITORING REPORT**

April to June 2009

Table of Contents

Executive Summary	ii
Summary of Quality	1
1 Relevance	1
2 Accuracy	3
3 Timeliness and punctuality	12
4 Accessibility and clarity	13
5 Comparability	14
6 Coherence	16
Summary of Methods	17
Technical Definitions	18
Website References	20
List of Tables	
2.1 Achieved sample by type of household, GB & UK AJ09	4
2.2 Achieved number of household interviews, GB & UK, SN97 to AJ09	4
2.3 Achieved number of person interviews, GB & UK, SN97 to AJ09	4
2.4 Standard Errors, UK, AJ09	5
2.5 Wave specific response rates, GB, AJ09, excluding imputed households	6
2.6 Wave specific response rates, GB, SN97 to AJ09	6
2.7 Wave specific response rates, GB, AJ09, including imputed households	7
2.8 Composition of non-response, GB, AJ09, including imputed	7
2.9 Wave specific response rates, UK, AJ09, excluding imputed households	8
2.10 Wave specific response rates, UK, AJ09, including imputed households	8
2.11 Wave specific response rates, AJ09, including imputed, by GOR	9
2.12 Proxy response rates, GB, AJ09	10
2.13 Income response rates by NS-SEC, GB, AJ09	10
2.14 Attrition rates by key characteristics, GB, AJ09	11

Executive Summary

April to June 2009

Note:

Due to the move from processing the LFS on a seasonal quarter basis to processing on a calendar quarter basis from January 2006, all time series data have a break in series which corresponds to this change.

Summary of achieved sample size

The achieved sample size for the UK LFS during April to June 2009 (AJ09) was **114,310** individuals in **50,206** households. Compared with the previous quarter (JM09), this represents a decrease of 0.73 per cent in achieved person interviews and 1.89 per cent decrease in household interviews. Compared with the same period during 2008, this shows a decrease in achieved person interviews (3.44 per cent) and in household interviews (3.20 per cent).

Summary of response rates

In AJ09, the total response rate for GB excluding imputed cases was **55.5** per cent. This is down 2.6 percentage points on the previous quarter, and down by 2.3 percentage points on AJ08.

The total response rate in AJ09 for GB including imputed cases was **62.2** per cent. This compares with 63.3 per cent in JM09 and 64.2 per cent a year ago.

The response rate varied across each wave of the survey, ranging from **65** per cent for wave 1 cases to **50.7** percent for wave 5 (excluding imputed cases). Comparative response rates for the previous quarter are 66.1 per cent and 52.4 per cent respectively and for the same period 12 months ago, 67.8 per cent and 58.5 per cent.

In terms of the composition of non-response (Fig. 2.8), outright refusals account for a high percentage at 48.2 per cent, 1 percentage point lower than last quarter. Refusals made directly to HQ were up slightly on last quarter, 17.6 per cent from 17.5 percent, and were up by 0.7 percentage points on the same period 12 months ago (16.9 per cent). Non-contacts increased by 1 percentage point from 13 per cent in JM09 to 14 per cent in AJ09. Refusal to re-interview for the same period a year ago was higher at 15.3 per cent, compared to 13.6 per cent in JM09. Circumstantial refusals, at 6.5 per cent, remained the same as last quarter and were down from a year ago, by 0.3 percentage points.

The wave 1 response rate for the UK was **64.4** per cent (excluding imputed households because there is no imputation in the LFS at wave 1).

Regional response rate patterns indicate that the highest accumulated response rate across the five waves is 69.5 per cent in West Yorkshire. The highest wave one response rate was achieved in West Yorkshire (74.2 per cent), followed by South Yorkshire (73.3 per cent). The lowest wave 1 response rates were in Inner London, at 53.3 per cent, followed by Outer London and the lowest wave 5 response rates were in Outer London, at 47.6 per cent, followed by Inner London.

The overall proxy response rate is 32 per cent. Proxy response rates by the key characteristics: age, sex, ethnicity and economic activity - reveal that the highest rates are for the 16-17 age band at 84.8 per cent, the 18-19 age band at 70.7 per cent, for respondents on government training schemes (55.7 per cent) and for non-white respondents (39.6 per cent). The lowest proxy response rates are for unpaid family workers (23.9 per cent), females (26.8 per cent), respondents aged 20 and over (29 per cent) and economically inactive respondents (29.4 per cent).

Executive Summary (Continued)

The average income response rate for AJ09 was 85.6 per cent. The data on income response rates by NS-SEC reveal that response rates at wave one are highest for higher managerial and professional occupations (85.9 per cent). At wave five, response rates are highest for lower managerial and professional occupations (86.7 per cent). Generally, there is only a small difference in the rates of the NS-SEC groups. The total level of response to the income questions has increased slightly over the past 12 months (response in AJ08 was 84.9 per cent).

The data on attrition rates reveal that those who drop out of the survey between waves 1 and 5, tend to be distributed fairly evenly by key characteristics, but are over-represented in the 16 - 19 and 20 - 29 age bands, in households with 5 or more people, in those on government schemes or unemployed and amongst those living in Inner and Outer London.

Delivery dates of data

The client data file for the quarter for the United Kingdom was delivered on schedule (see Section 3 for further details).

Questionnaire Changes

One important change for 2009 is that the Eurostat Ad Hoc Module questions will be asked in all quarters (wave one only). In 2008 and previous years, these questions were asked in Q2 (AJ). The topic for this year is the 'Entry of Young People into the Labour Market' and consists of 24 questions. Unlike 2008 where the Ad Hoc Module questions were placed within appropriate sections of the main LFS questionnaire (e.g. ethnicity, work, education, etc), in 2009, all the questions are contained within one section. Furthermore, a EuroStat requirement is that we supply data for structural variables as annual averages. What this means is that the basis for collecting data through some LFS variables, which are then used to derive EuroStat variables, will be collected on two bases - firstly in all waves but one quarter only (mostly AJ), and secondly in all quarters but wave one only. From 2010 these data will just be collected in all quarters, wave one only.

A SIC 2007 industry coding frame has been introduced to replace the existing SIC 1992 version. It will be used to code industry details provided by respondents and is in the form of a computer-assisted look-up table, similar to that used for occupation and country of birth.

Details of New, Amended and Deleted questions for 2009 can be found in Section 5 (page 15).

Fieldwork issues

The Integrated Household Survey (IHS) was launched in January 2008 with three ONS surveys - GLF, LCF and OPN. Any impact this may have on existing surveys such as the LFS is being monitored.

Work to improve field capacity, specifically in terms of more aggressive recruitment of field staff is on-going and interviewer numbers have been on the increase. On-going efforts at improving response rates have led to the implementation of a number of initiatives such as the Interviewer Learning Programme which was introduced in April 2008 to provide a structured programme of training for new interviewers. In December 2008 a book of stamps was issued to households as an incentive to take part. There have also been additional efforts to ensure that re-issues are appropriately dealt with.

SUMMARY OF QUALITY

1 RELEVANCE

The degree to which the statistical product meets user needs for both coverage and content

Primary Purpose

The primary purpose of the LFS is "the prompt publication of key aggregate, whole economy, indicators, for the integrated assessment of labour market conditions" (Review of the Labour Force Survey, ONS, 2002). The 'labour market' covers all aspects of people's work, including the education and training needed to equip them for work, the jobs themselves, job-search for those out of work, and income from work and benefits.

Users and Uses

Users of LFS data often combine it with related data from other sources to provide an overall view of the state of the labour market (section 6 provides more information about the reconciliation of LFS data with data from other sources). One of the most important users of this sort of assessment is the Bank of England's Monetary Policy Committee, which sets interest rates in order to meet the Government's inflation target.

Other key users of LFS data are HM Treasury and the Department for Work and Pensions, because they are responsible for UK economic and labour market policy. They are interested in a variety of indicators of the state of the labour market, including the number of people in employment, the number of hours worked, and the number of unemployed people (defined according to the International Labour Organisation - ILO). They often analyse these series by age groups, by regions and by gender. Other Government users include the Department for Innovation, Universities & Skills (DIUS), the Department for Business, Enterprise and Regulatory Reform (BERR), the Home Office, the Health & Safety Executive, the Scottish Government, and the Welsh Assembly Government.

At the international level, LFS data is used by the European Parliament, Council and Commission, the European Central Bank and DG Employment (Directorate-General for Employment, Social Affairs and Equal Opportunities). It is also used by the Organisation for Economic Co-operation and Development (OECD) and the International Labour Organisation (ILO).

Other users include local authorities, the Trades Union Congress (TUC), the Employer's Association, the Confederation of British Industry, the Institute of Employment Studies, the Institute for Public Policy Research, the National Institute of Economic and Social Research, the Policy Studies Institute, the Institute for Fiscal Studies, academic researchers, the media and the general public.

Strengths and Limitations

The strengths of the LFS are that it has the largest coverage of any household survey in the UK and can thus generate statistics for small geographical areas. In addition, the sampling errors are relatively small, as a result of the wave structure and the size of the survey. The survey covers a large range of employment-related variables and non-employment-related variables, allowing cross-linking analyses to be undertaken (e.g. earnings against educational attainment).

One of the limitations of the LFS is that the sample design provides no guarantee of adequate coverage of any industry, as the survey is not industrially stratified. The LFS coverage also omits communal establishments, except NHS housing, students in halls of residence and at boarding schools. Members of the armed forces are only included if they live in private accommodation. Also, workers under 16 are not covered.

Relevance

Key Definitions

The definitions of the three economic activity groups - employed, unemployed and economically inactive - which are used in the LFS are the standard International Labour Organisation (ILO) definitions. It should be noted that although the LFS uses ILO definitions, these definitions are not interpreted and applied in exactly the same way in different countries. For example, although 'working age' is a common term, different countries have different statutory school leaving and retirement ages. However, Eurostat collects data from Member States and adjusts them to produce comparable estimates.

2 ACCURACY

The closeness between an estimated result and the (unknown) true value

The main threats to accuracy are sources of error, namely sampling error and non-sampling error, where non-sampling error includes: coverage error, non-response error, measurement error, processing error and model assumption error.

Many of the sources of non-sampling error are difficult to measure. However, the LFS publishes detailed response rates for all waves of the survey and an overall response rate, including time-series (Tables 2.5 - 2.10). Response rates are also published by Government Office Region (GOR) for each wave during the particular quarter (Table 2.11). The LFS also publishes proxy response rates (Table 2.12), response rates for income questions by National Statistics (NS) socio-economic classification (Table 2.13) and attrition rates (Table 2.14).

Surveys, such as the LFS, provide estimates of population characteristics rather than exact measures. In principle, many random samples could be drawn and each would give different results, due to the fact that each sample would be made up of different people, who would give different answers to the questions asked. The spread of these results is the sampling variability, which generally reduces with increasing sample size. A confidence interval is a range of values, defined by a lower and upper bound, which indicates the variability of an estimate. Statistical methods are used to calculate the sampling variability from which the confidence interval can be determined. For example, with a 95 per cent confidence interval, it is expected that in 95 per cent of the survey samples, the resulting confidence interval will contain the true value that would be obtained by surveying the whole population.

The LFS routinely publishes details of achieved sample sizes in terms of achieved number of household and person interviews (Tables 2.1, 2.2 & 2.3) and sampling variability for estimates of key variables, where it is expected that in 95 per cent of samples the range would contain the true value (Table 2.4). In Table 2.4, the sampling variability gives the range above and below the estimate at a 95 per cent confidence level.

Accuracy

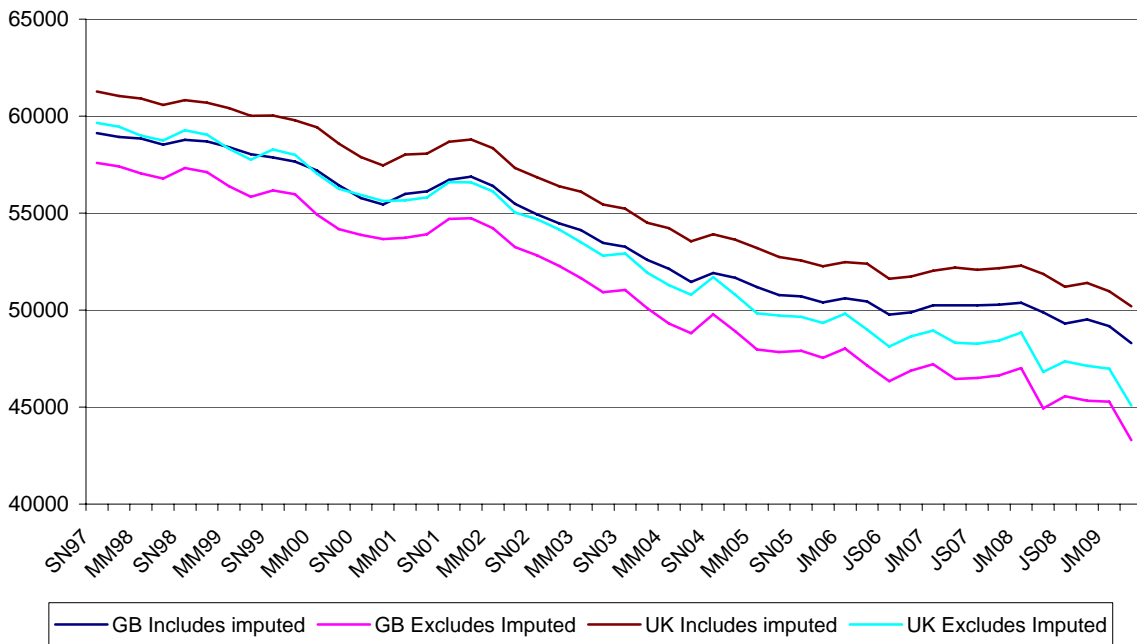
2.1 LFS QUARTERLY SURVEY

Achieved sample by type of household, AJ09

	GB		UK	
	Includes imputed	Excludes imputed	Includes imputed	Excludes imputed
Private households	48,300	43,298	50,199	45,084
Individuals in private households	109,594	95,757	114,299	100,149
NHS Households	7	6	7	6
Individuals in NHS households	11	10	11	10

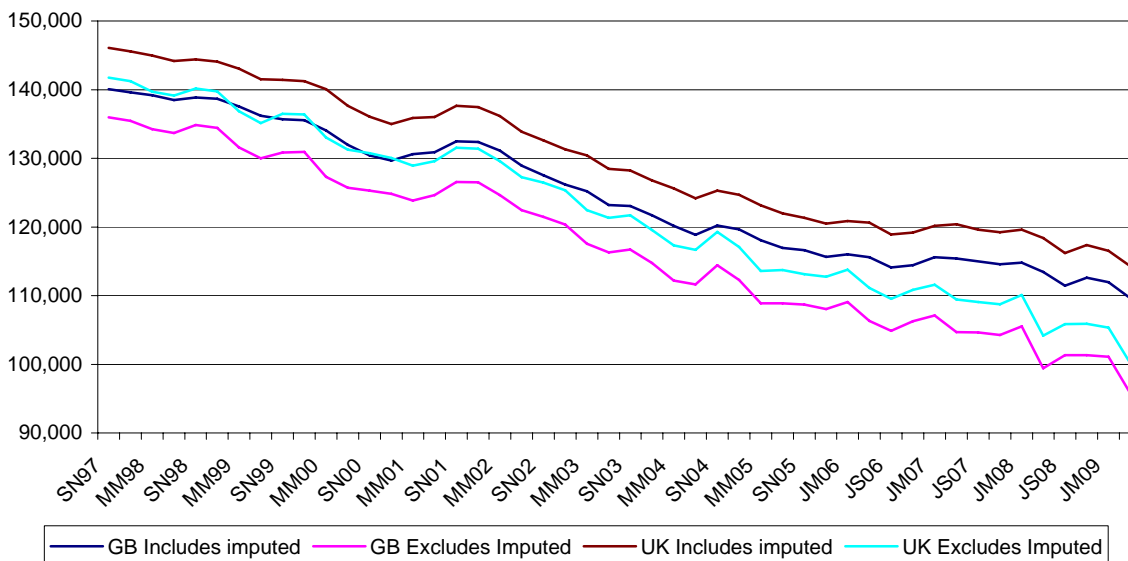
2.2 LFS QUARTERLY SURVEY

Achieved number of household interviews, GB and UK, SN97 to AJ09



2.3 LFS QUARTERLY SURVEY

Achieved number of person interviews, GB and UK, SN97 to AJ09



Accuracy

2.4 LFS QUARTERLY SURVEY Sampling Variability, UK, AJ09

Variable	Estimate	Sampling Variability +/-	Change on quarter	Sampling variability +/-	Change on year	Sampling variability +/-
Employment (000s)	28,870	148	-258	145	-348	141
Employment rate	72.4%	0.4	-0.8%	0.4	-1.3%	0.4
Average weekly hours worked (16+)	31.9	0.2	0.2	0.2	-0.7	0.2
Unemployment (000s)	2,408	76	186	72	579	62
Unemployment rate	7.1%	0.2	0.9%	0.2	0.9%	0.2
Economically Active (000s)	31,278	138	-72	135	231	132
Economic activity rate	78.7%	0.3	-0.3%	0.3	0.2%	0.3
Economically Inactive (000s)	8,084	129	141	126	-42	123
Economic Inactivity rate	21.3%	0.3	0.3%	0.3	-0.2%	0.3
Inactive, not wanting a job (000s)	5,902	115	29	113	91	108
Inactive, wanting a job (000s)	2,182	71	112	67	-134	70
Redundancies (000s)	268	25	-32	26	178	16

Note: Estimates in Table 2.4 are not seasonally adjusted. The sampling variability estimates published in the quarterly PQM are direct estimates, whereas the sampling variability estimates published in the monthly Labour Market Statistics First Release are based on monthly approximations. This may result in small differences when comparing similar periods.

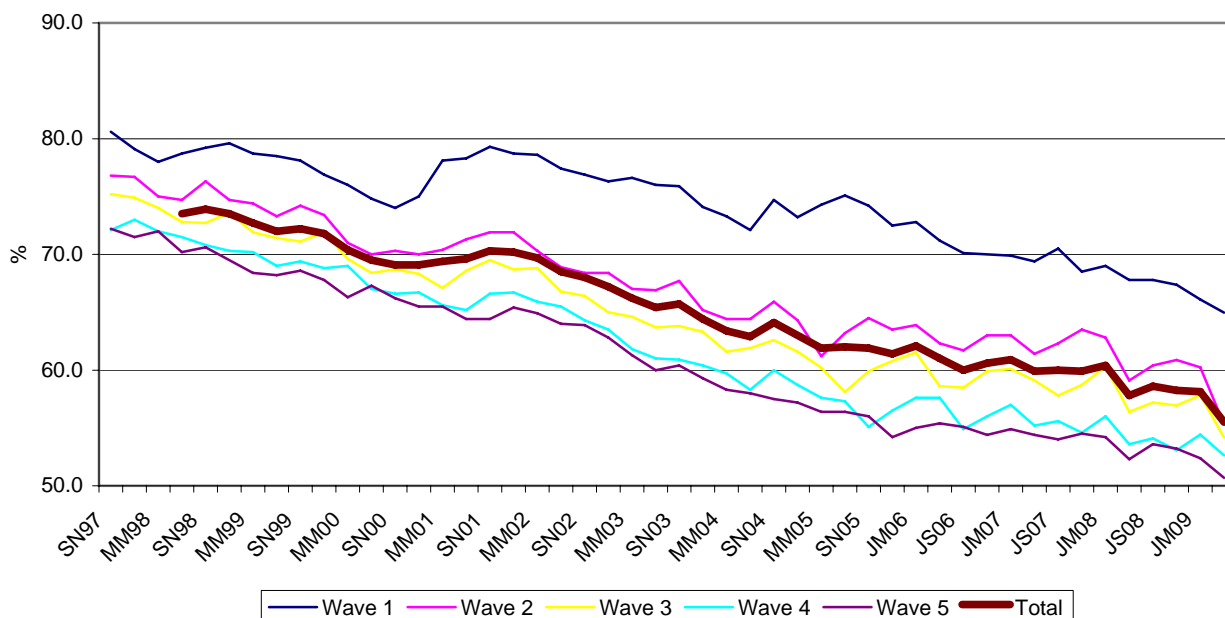
Accuracy

2.5 LFS QUARTERLY SURVEY Wave specific response rates, Great Britain, excluding imputed households AJ09

	Wave 1 in AJ09		Wave 2 in AJ09		Wave 3 in AJ09		Wave 4 in AJ09		Wave 5 in AJ09		Total	
	#	%	#	%	#	%	#	%	#	%	#	%
Eligible households found at selected units	15,347	100.0	15,481	100.0	15,520	100.0	15,700	100.0	15,669	100.0	77,717	100.0
Responding units												
Total	9,970	65.0	8,562	55.3	8,408	54.2	8,263	52.6	7,942	50.7	43,145	55.5
Full	9,545	62.2	7,868	50.8	7,702	49.6	7,472	47.6	7,239	46.2	39,826	51.2
Partial	425	2.8	694	4.5	706	4.5	791	5.0	703	4.5	3,319	4.3
Non-responding units												
Circumstantial refusal	1,120	7.3	1,092	7.1	951	6.1	935	6.0	745	4.8	4,843	6.2
Outright refusal	1,808	11.8	2,449	15.8	3,010	19.4	3,384	21.6	3,533	22.5	14,184	18.3
Refusal to HQ	996	6.5	1,152	7.4	1,030	6.6	924	5.9	1,082	6.9	5,184	6.7
Non-contact	1,477	9.6	1,378	8.9	1,158	7.5	1,097	7.0	1,077	6.9	6,187	8.0
Addresses not issued for interviewing												
Refusal to re-interview	n/a	n/a	731	4.7	896	5.8	1,097	7.0	1,290	8.2	4,014	5.2
Co-operation rate		71.8		64.6		62.8		61.2		59.7		64.1
Contact rate		83.9		82.7		85.0		86.2		85.0		84.5

Note: Excludes households for which response has been imputed. The total response rate is the aggregate response rate for the quarter across all waves, based on all eligible, in-scope households. For a full definition of response categories and the method used to calculate the response rates, see Technical Definitions.

2.6 LFS QUARTERLY SURVEY Wave specific response rates, Great Britain, excluding imputed households, SN97 to AJ09



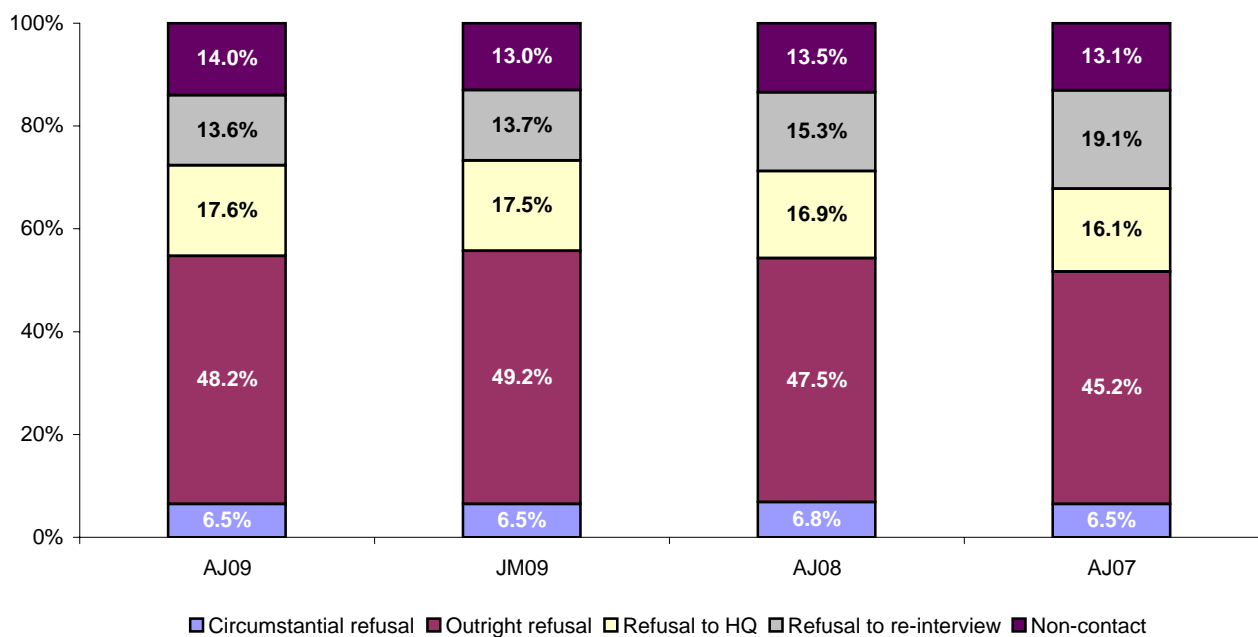
Accuracy

2.7 LFS QUARTERLY SURVEY Wave specific response rates Great Britain, AJ09, including imputed households

	Wave 1 in AJ09		Wave 2 in AJ09		Wave 3 in AJ09		Wave 4 in AJ09		Wave 5 in AJ09		Total	
	#	%	#	%	#	%	#	%	#	%	#	%
Eligible households found at selected units	15,347	100.0	15,481	100.0	15,520	100.0	15,700	100.0	15,669	100.0	77,717	100.0
Responding units												
Total	9,946	64.8	10,147	65.5	9,765	62.9	9,515	60.6	8,935	57.0	48,308	62.2
Full	9,545	62.2	7,868	50.8	7,702	49.6	7,472	47.6	7,239	46.2	39,826	51.2
Partial	401	2.6	811	5.2	773	5.0	791	5.0	703	4.5	3,479	4.5
Imputed	-	-	1,468	9.5	1,290	8.3	1,252	8.0	993	6.3	5,003	6.4
Non-responding units												
Circumstantial refusal	1,120	7.3	289	1.9	180	1.2	159	1.0	162	1.0	1,910	2.5
Outright refusal	1,808	11.8	2,449	15.8	3,010	19.4	3,384	21.6	3,533	22.5	14,184	18.3
Refusal to HQ	996	6.5	1,152	7.4	1,030	6.6	924	5.9	1,082	6.9	5,184	6.7
Non-contact	1,477	9.6	713	4.6	639	4.1	621	4.0	667	4.3	4,117	5.3
Addresses not issued for interviewing												
Refusal to re-interview			731	4.7	896	5.8	1,097	7.0	1,290	8.2	4,014	5.2
Co-operation rate		71.7		66.9		64.6		62.6		60.2		65.2
Contact rate		83.9		85.0		86.7		87.7		86.2		85.7

Note: Excludes households for which response has been imputed. The total response rate is the aggregate response rate for the quarter across all waves, based on all eligible, in-scope households. For a full definition of response categories and the method used to calculate the response rates, see Technical Definitions.

2.8 LFS QUARTERLY SURVEY Composition of non-response, Great Britain, AJ09, including imputed households



Note: For definitions of the types of non-response, see Technical Definitions. Figures are based on the aggregate response for the quarter covering all waves.

Accuracy

2.9 LFS QUARTERLY SURVEY Wave specific response rates, UK, AJ09, excluding imputed households

	Wave 1 in AJ09		Wave 2 in AJ09		Wave 3 in AJ09		Wave 4 in AJ09		Wave 5 in AJ09		Total	
	#	%	#	%	#	%	#	%	#	%	#	%
Eligible households found at selected units	16,155	100.0	na	na	na	na	na	na	na	na	na	na
Responding units												
Total	10,397	64.4	na	na	na	na	na	na	na	na	na	na
Full	10,043	62.2	na	na	na	na	na	na	na	na	na	na
Partial	354	2.2	na	na	na	na	na	na	na	na	na	na
Non-responding units												
Circumstantial refusal	1,164	7.2	na	na	na	na	na	na	na	na	na	na
Outright refusal	1,918	11.9	na	na	na	na	na	na	na	na	na	na
Refusal to HQ	1,010	6.3	na	na	na	na	na	na	na	na	na	na
Non-contact	1,604	9.9	na	na	na	na	na	na	na	na	na	na
Addresses not issued for interviewing												
Refusal to re-interview			na	na	na	na	na	na	na	na	na	na
Co-operation rate		71.8		na		na		na		na		na
Contact rate		83.8		na		na		na		na		na

Note: Excludes households for which response has been imputed. The total response rate is the aggregate response rate for the quarter, based on all eligible, in-scope households. See Technical Definitions for a full definition of response categories and the method used to calculate the response rates. Wave-specific response rates for Northern Ireland (and hence for UK) are currently not available and are denoted 'na'.

2.10 LFS QUARTERLY SURVEY Wave specific response rates, UK, AJ09, including imputed households

	Wave 1 in AJ09		Wave 2 in AJ09		Wave 3 in AJ09		Wave 4 in AJ09		Wave 5 in AJ09		Total	
	#	%	#	%	#	%	#	%	#	%	#	%
Eligible households found at selected units	16,155	100.0	na	na	na	na	na	na	na	na	na	na
Responding units												
Total	10,397	64.4	na	na	na	na	na	na	na	na	na	na
Full	10,043	62.2	na	na	na	na	na	na	na	na	na	na
Partial	354	2.2	na	na	na	na	na	na	na	na	na	na
Imputed	-	-	na	na	na	na	na	na	na	na	na	na
Non-responding units												
Circumstantial refusal	1,164	7.2	na	na	na	na	na	na	na	na	na	na
Outright refusal	1,918	11.9	na	na	na	na	na	na	na	na	na	na
Refusal to HQ	1,010	6.3	na	na	na	na	na	na	na	na	na	na
Non-contact	1,604	9.9	na	na	na	na	na	na	na	na	na	na
Addresses not issued for interviewing												
Refusal to re-interview					na	na	na	na	na	na	na	na
Co-operation rate		71.8		na		na		na		na		na
Contact rate		83.8		na		na		na		na		na

Note: The total response rate is the aggregate response rate for the quarter, based on all eligible, in-scope households. For a full definition of response categories and the method used to calculate the response rates, see Technical Definitions. Wave-specific response rates for Northern Ireland (and hence for UK) are currently not available and are denoted 'na'.

Accuracy

2.11 LFS QUARTERLY SURVEY Wave specific response rates, AJ09, including imputed households, by GOR

	Wave 1 in AJ09	Wave 2 in AJ09	Wave 3 in AJ09	Wave 4 in AJ09	Wave 5 in AJ09	Total
Government Office Region (GOR)						
Tyne & Wear	72.4	70.3	69.9	62.6	65.3	68.1
Rest of North East	67.9	71.7	69.9	66.2	58.8	66.9
Greater Manchester	62.0	64.5	61.7	56.6	55.5	60.0
Merseyside	64.6	62.3	56.9	51.5	52.9	57.6
Rest of North West	69.4	72.8	68.0	61.8	56.0	65.6
South Yorkshire	73.3	69.9	68.7	63.2	58.3	66.2
West Yorkshire	74.2	74.3	68.4	67.1	63.7	69.5
Rest of Yorkshire and Humberside	69.1	70.3	65.4	64.6	61.9	66.3
East Midlands	65.9	67.8	67.2	64.7	60.5	65.2
West Midlands Metropolitan Council	60.7	63.8	60.7	56.4	56.3	59.6
Rest of West Midlands	72.6	67.8	64.4	63.0	57.2	65.0
East of England	66.2	64.6	62.8	61.0	58.2	62.5
Inner London	53.3	52.0	55.2	50.8	48.6	52.0
Outer London	57.8	58.0	51.9	49.8	47.6	53.0
South East	59.6	63.4	62.1	62.6	59.5	61.4
South West	63.6	67.9	62.9	64.8	60.6	64.0
England	64.1	65.4	62.6	60.5	57.4	62.0
Wales	65.9	61.9	63.8	60.2	58.5	62.0
Strathclyde	70.0	68.7	65.3	58.8	61.8	65.0
Rest of Scotland	72.2	68.5	65.8	64.4	58.2	65.8
Scotland	71.3	68.6	65.6	62.1	59.7	65.5
Northern Ireland	63.5	n/a	n/a	n/a	n/a	n/a

Note: The total response rate is the aggregate response rate for the quarter, based on all eligible, in-scope households. Each wave reported here is an independent sample; for example, the wave 2 response in OD08 is based on response in that quarter plus the previous quarter (JS08) where it was issued as a wave 1 case. Wave-specific response rates for Northern Ireland are currently not available.

Accuracy

2.12 LFS QUARTERLY SURVEY Proxy response, AJ09, GB

		All responses	Proxy	%
Age	Total (16+)	87,268	27,893	32.0
	16-17	2,815	2,388	84.8
	18-19	2,455	1,736	70.7
	20+	81,998	23,769	29.0
Sex	Total	87,268	27,893	32.0
	Male	41,467	15,613	37.7
	Female	45,801	12,280	26.8
Ethnicity	Total	87,268	27,893	32.0
	White	79,605	24,862	31.2
	Non-white	7,631	3,019	39.6
	Refused	32	12	37.5
Economic activity (INECAC05)	Total	87,268	27,893	32.0
	Employees	42,454	14,097	33.2
	Self-Employed	6,547	2,292	35.0
	Government schemes	167	93	55.7
	Unpaid family workers	180	43	23.9
	ILO Unemployed	3,912	1,373	35.1
	Inactive	34,008	9,995	29.4

Note: For definition of 'unpaid family workers', see Section 5.

2.13 LFS QUARTERLY SURVEY Income Response Rates by NS-SEC, GB, AJ09

	Wave 1 in AJ09	Wave 5 in AJ09	Total
NS-SEC	%	%	%
Higher managerial and professional	85.9	87.3	86.5
Lower managerial and professional	84.7	89.3	86.7
Intermediate occupations	83.6	89.4	86.1
Small employers and own account workers	82.4	85.7	84.2
Lower supervisory and technical	81.9	87.1	84.3
Semi-routine occupations	82.1	86.7	84.0
Routine occupations	81.4	88.3	84.2
Total	83.6	88.2	85.6

Note: The percentages in Table 2.13 are based on all eligible in-scope respondents at wave 1 and all eligible in-scope respondents at wave 5. The total response rate is the aggregate response rate for income for the quarter (wave 1 and wave 5), based on all eligible, in-scope respondents.

Accuracy

2.14 LFS QUARTERLY SURVEY Summary of attrition by key characteristics, AJ09, GB

Column percentages

		Wave 1 in AJ08	Wave 5 in AJ09	Responds all waves	Non-responder
		Responds	Responds		
Age	<16	20.4	19.2	17.5	21.5
	16-19	5.0	4.0	3.5	6.2
	20-29	11.3	7.8	6.2	15.7
	30-39	13.0	11.5	10.3	14.8
	40-49	14.7	14.0	13.1	15.5
	50-59	12.1	13.1	13.1	11.4
	60-69	11.4	14.0	15.9	8.1
	70+	12.2	16.5	20.3	6.8
Sex	Male	48.6	48.3	48.0	48.9
	Female	51.4	51.7	52.0	51.1
Econ Activity (INECAC05)	Employees	38.3	36.7	35.1	40.2
	Self Emp	6.0	5.8	5.4	6.2
	Gov Sch.	0.1	0.1	0.1	0.2
	UPFW	0.1	0.2	0.1	0.1
	ILO Unemp	2.3	1.9	1.7	2.8
	Inactive	30.6	35.6	40.2	24.4
	<16	22.6	19.8	17.5	26.1
Number of people in household (TOTNUM)	1	12.2	14.0	15.9	10.0
	2	30.7	34.8	37.5	25.7
	3	19.8	18.1	16.5	21.9
	4	21.7	20.5	18.7	23.2
	5	9.8	8.0	7.7	12.2
	6 or more	5.7	4.7	3.8	7.0
Region (GOVTOR)	Tyne & Wear	2.0	2.1	2.0	1.9
	Rest of North East	2.6	2.5	2.6	2.6
	Greater Manchester	4.7	4.4	4.4	5.0
	Merseyside	2.3	2.1	1.8	2.5
	Rest of North West	5.1	5.2	5.3	4.9
	South Yorkshire	2.3	2.4	2.5	2.2
	West Yorkshire	4.3	4.2	4.3	4.5
	Rest of Yorkshire and Humberside	2.9	3.1	3.4	2.6
	East Midlands	7.6	8.1	8.0	7.0
	West Midlands Metropolitan Council	4.5	4.2	4.0	4.8
	Rest of West Midlands	4.8	5.2	5.2	4.3
	East of England	9.5	10.3	10.6	8.6
	Inner London	4.1	3.0	2.3	5.5
	Outer London	6.7	4.7	4.3	9.2
	South East	14.0	15.0	15.6	12.9
	South West	8.5	9.2	9.7	7.7
Wales	5.1	5.2	5.2	4.9	
Strathclyde	3.9	3.9	3.8	3.9	
Rest of Scotland	5.1	5.1	4.9	5.0	

Note: The column, *Wave 1 in XXXX Responds*, shows the percentage of responders in each key characteristics category at wave 1. The column, *Wave 5 in XXXX Responds*, shows the percentage of responders in each key characteristics category at wave 5. A significant decline in the values between waves 1 and 5 denotes a higher rate of attrition than where values are consistent between waves 1 and 5 or higher at wave 5.

3 TIMELINESS AND PUNCTUALITY

Timeliness refers to the lapse of time between publication and the period to which the data refer. Punctuality refers to the time lag between the actual and planned dates of publication.

3 Delivery dates of data

3.1 To ONS Household, Labour Market and Social Wellbeing Division (HLMSWD)

Scheduled delivery date for file: July 21, 2009

Achieved delivery date for file: July 21, 2009

Time lag between delivery date and the end of the reference period: 23 days

3.2 Data file for other users

Scheduled availability date for Regional Public & Government normal release user files: August 12, 2009

Recipients

Economic and Social Research Council
Department of Business Innovation and Skills
Employment Policy Institute
Department of Enterprise, Trade and Investment (Northern Ireland)
Health and Safety Executive
Home Office
Department of Work and Pensions
Bank of England
Her Majesty's Treasury
Scottish Government \ Scottish Executive
Learning and Skills Council
Low Pay Commission
Inland Revenue
Welsh Assembly Government
House of Commons Library
Department of Communities and Local Government
Department of Culture Media and Sport
Department of Transport

4 ACCESSIBILITY AND CLARITY

Accessibility is the ease with which users are able to access the data, also reflecting the format(s) in which the data are available and the availability of supporting information. Clarity refers to the quality and sufficiency of the metadata, illustrations and accompanying advice.

The UK Data Archive at Essex University provides free access to the various LFS datasets and can be contacted via the website: <http://www.data-archive.ac.uk>

A highly disaggregated dataset, which covers a wealth of data for local areas, is available free from NOMIS: <http://www.nomisweb.co.uk>

The Social Surveys Team provide LFS data for a fee, and can be contacted by phone (01633 455678) or email: socialsurveys@ons.gsi.gov.uk

Labour Market data, including data from the LFS, are published every month through Statistical Bulletins (formerly First Releases). These include text, tables and charts. Data contained within the Bulletins are available to download, free of charge, from the National Statistics website. Paper copies are available through subscription from the ONS Press Office, by phone (01633 455957) or email: press.office@ons.gsi.gov.uk. All the main series contained within the releases are available from the website: <http://www.statistics.gov.uk/statbase/product.asp?vlnk=1944>

A more detailed set of data are published each month in the Economic and Labour Market Review (formerly Labour Market Trends), published by Palgrave Macmillan: www.palgrave.com/ons, these are available in PDF format from the website: www.statistics.gov.uk/elmr/

The Labour Market Guide can be accessed from the website:
http://www.statistics.gov.uk/downloads/theme_labour/guide_to_LMS_FR1.pdf

The Summary Quality Report for Labour Market data releases can be accessed from the website:
<http://www.statistics.gov.uk/cci/article.asp?id=1354>

The Labour Market helpline can be contacted by phone (01633 456901) or email:
labour.market@ons.gov.uk

5 COMPARABILITY

The degree to which data can be compared over time and domain

Background

The LFS began in 1973 and was carried out every 2 years until 1983. Between 1984 and 1991, data were collected annually and the survey has been running in its present form, with quarterly sampling, since spring 1992. It is carried out under European Union Regulations which specify the way in which the survey should be conducted, the quality of the results that Member States supply to Eurostat and the timetable for supplying results. Although the LFS began as a survey designed to meet international obligations, its primary purpose is now (as stated in section 1, Relevance), "the prompt publication of key aggregate, whole economy, indicators, for the integrated assessment of labour market conditions" (Review of the Labour Force Survey, ONS, 2002).

Definitions

The definitions of the three economic activity groups - employed, unemployed and economically inactive - which are used in the LFS are the standard International Labour Organisation (ILO) definitions.

Economically active - those aged 16 or over, who are either employed or unemployed in the survey reference week.

Employed - those aged 16 or over, who are regarded as in employment if they did at least one hour of work in the reference week (as an employee, self-employed, unpaid workers in a family business or participants in government-supported training schemes) and those who had a job that they were temporarily away from (for example, if they are on holiday).

Unemployed - those aged 16 or over, who are without work, want a job, have actively sought work in the last four weeks and are available to start work in the next two weeks; or are out of work but have found a job and are waiting to start it within the next two weeks.

Economically inactive - those who are neither in employment nor unemployed. This group includes, for example, all those who are looking after a home or family, have a long-term illness or disability which prevents them working or are retired.

Unpaid family workers - those who are doing unpaid work in a family business.

6 COHERENCE

The degree to which data that are derived from different sources or methods, but which refer to the same phenomenon, are similar

Data Sources

The LFS is one of a number of sources of data about the labour market. Some sources provide data which overlap with LFS data on employment, unemployment and earnings. ONS has published guidance about the strengths and limitations of each source in relation to these topics and has indicated which source is the most appropriate for different purposes. Details can be found in the Labour Market Guide, which can be accessed from the website:

<http://www.statistics.gov.uk/about/data/guides/LabourMarket>

Strengths and Limitations of the LFS

The strengths of the LFS are that it has the largest coverage of any UK household survey and can thus generate statistics for small geographical areas. In addition, the sampling errors are relatively small, as a result of the wave structure and size of the survey. The survey covers a large range of employment-related variables and non-employment-related variables, allowing cross-linking analyses to be undertaken (e.g. earnings against educational attainment).

One of the limitations of the LFS is that the sample design provides no guarantee of adequate coverage of any industry, as the survey is not industrially stratified. The LFS coverage also omits communal establishments, excepting NHS housing and students in halls of residence. Members of the armed forces are only included if they live in private accommodation. Also, workers under 16 are not covered.

Employment, Unemployment and Economic Inactivity

The LFS is the source recommended by ONS for certain employment-related statistics (e.g. estimates of the number of people in employment or unemployed). The LFS is also a unique source of comprehensive, coherent information about economic inactivity, where it provides information separately about people who want a job and those who do not.

Number and Industrial Composition of Jobs

The workforce jobs (WFJ) series provides estimates of the number of jobs in the UK economy and is the source recommended by ONS for both the number of jobs and the industrial composition of jobs. Workforce jobs consist of the sum of employee jobs, self-employment jobs, jobs in the armed forces and government-supported trainees. Civilian workforce jobs are available by geographical region, gender and broad industry. Total workforce jobs are available by gender and broad industry.

Earnings

For estimates of change in earnings (e.g. pay growth in the economy), the Average Earnings Index (AEI) is the most suitable source. It provides industry and whole-economy information, but excludes small employers, the self-employed and government-supported trainees. Pay, commission, bonuses, overtime and pay award arrears are included, but redundancy payments and benefits in kind are excluded. The Annual Survey of Hours and Earnings (ASHE) includes information about the levels, distribution and make-up of earnings and hours worked for employees in different occupations, industries, ages and regions. It should be used when the information required is not available from the AEI (such as for occupational groups or regional analyses) and is the preferred source of the earnings of full-time employees and of the average hourly earnings of all employees. The LFS should be used when the information is not available from the AEI or from ASHE and is the preferred source of data about the earnings of part-time and low-paid employees.

7 SUMMARY OF METHODS

The LFS covers private households, including persons who are temporarily absent. The resident population comprises persons who regard the sample address as their main address, and also those who have lived in the dwelling for more than six consecutive months, even if they do not regard this as their principal dwelling. Persons absent for more than six months are not regarded as members of the resident population. A private household comprises one or more persons whose main residence is the same dwelling and/or who share at least one meal per day. Students living in halls of residence and pupils at boarding school are sampled via the private households of their parents. In Great Britain, an additional sample is drawn from persons living in National Health Service accommodation.

The year is divided into quarters of 13 weeks. Prior to January 2006, these were seasonal quarters: winter (December to February), spring (March to May), summer (June to August) and autumn (September to November). From January 2006, the LFS has been conducted on the basis of calendar quarters: Q1 - January to March, Q2 - April to June, Q3 - July to September and Q4 - October to December.

For most of Great Britain, the survey base is the Royal Mail's PAF (Postcode Address File), a database of all addresses receiving mail. The list is limited to addresses receiving fewer than 25 items of post per day, so as to exclude businesses. Because of the very low population density in the far north of Scotland (north of the Caledonian Canal), telephone directories are used as sampling frames, and interviews are carried out by telephone because face-to-face interviews would be too expensive. In Northern Ireland, the Rating and Valuation Lists (which serve for the administration of land taxes) are used.

In Great Britain, a systematic sample is drawn each quarter from the three sampling bases, yielding 16,640 PAF addresses, 75 telephone numbers for the north of Scotland and 36 units of National Health Service housing. As the PAF is broken down geographically, the systematic sampling ensures that the sample is representative at regional level. In Northern Ireland, a simple random sample is drawn, each quarter, from each of three strata, giving 650 addresses in all.

A rotation system comprising five waves is used. Respondents are interviewed five times at 13-week intervals and one-fifth of the sample is replaced each quarter. Interviews are carried out on a face-to-face basis with the help of portable computers (CAPI) for the interviews in the first wave. In the far north of Scotland (north of the Caledonian Canal) and for interviews in the second to fifth waves, wherever possible, interviews are carried out by telephone (CATI).

Further details of the methodology used in the LFS can be found in the Labour Force Survey User Guide Volume 1: LFS Background & Methodology, which can be accessed through the website: <http://www.statistics.gov.uk/statbase/Product.asp?vlnk=1537>.

8 TECHNICAL DEFINITIONS

Imputation

If a household is unavailable for interview, but was interviewed in the previous wave, responses from the previous wave are rolled forward. This is referred to as 'imputation'. Imputation is carried out to minimise non-response bias in estimates, while simultaneously improving precision by boosting the sample size. The rationale is that most LFS variables do not change from one quarter to another for most people. Responses are rolled forward for one wave only. Data are not rolled forward after a second consecutive non-response. Tables and charts (at person or household level) containing responses which have been rolled forward from the previous wave are denoted by the term 'including imputed'. Tables and charts which do not contain responses which have been rolled forward from the previous wave are denoted by the term 'excluding imputed'.

Method of Calculating Sampling Variability

The sampling variability is the spread of results which would be obtained if different samples were drawn. A confidence interval is a range of values, defined by a lower and upper bound, which indicates the variability of an estimate. Statistical methods are used to calculate the sampling variability from which the confidence interval can be determined. For example, with a 95 per cent confidence interval, it is expected that in 95 per cent of the survey samples, the resulting confidence interval will contain the true value that would be obtained by surveying the whole population. The statistical methodology used to calculate the sampling variability published in this report can be found at the website below:

<http://nswebcopy/about/data/methodology/default.asp>

Method of Calculating Response Rates

The response rate indicates how many interviews were achieved as a proportion of those eligible for the survey. The formula used is as follows:

$$RR = (FR + PR)/(FR + PR + OR + CR + RHQ + NC + RRI^*)$$

where RR = response rate, FR = full response, PR = partial response, OR = outright refusal, CR = circumstantial refusal, RHQ = refusal to HQ, NC = non contact, RRI = refusal to re-interview, *applies to waves 2 to 5 only.

Definitions of Response Outcome Categories

A **full response** denotes a household in which each household member has answered all applicable questions.

A **partial response** denotes a household in which questions were not completed because someone refused to be interviewed, refused part way through the questionnaire or refused to let someone else answer on his or her behalf. However, at least one question block must have been completed. If only part information has been collected for a one-person household, it is coded as a refusal or non-contact.

An **outright refusal** is a household which refuses to respond to the survey and the interviewer feels that there is no chance of an interview at the current or in any future wave.

A **circumstantial refusal** is a household where the respondent refuses to respond because of a temporary circumstance (e.g. going on holiday, too busy during the field period). A circumstantial refusal enables an interviewer to call back at the next wave.

A **refusal to HQ** is a household which contacts headquarters to refuse to participate in the survey in response to the advance letter.

A **non-contact** arises when an address is occupied, but where it has not been possible to contact any member of the household in the field period.

A **refusal to re-interview** is a household which takes part in the survey (at one or more of waves one to four) but which, when asked to take part in the next wave (waves two to five), refuses.

Technical Definitions

Method of Calculating Income Response Rates

The income question is asked at wave 1 and wave 5 only. Individuals aged 16-69 who are in employment in the reference week, form the sub-set of respondents who are eligible for these questions. The percentage response rates for the income questions are based on all eligible, in-scope respondents at wave 1 and all eligible, in-scope respondents at wave 5. The total response rate is the aggregate response rate for income for the quarter (wave 1 and wave 5), based on all eligible, in-scope respondents.

NS-SEC

NS-SEC is the National Statistics Socio-Economic Classification, which replaces previous classifications which were based on social class and social and economic group.

Proxy Response

The LFS has to complete fieldwork to a tight timetable and interview as many of the sampled households as possible, which leaves limited time for recalls. LFS interviewers try to interview every adult (aged 16+) in each sampled household. However, when a household member is unavailable for interview, interviewers accept information by proxy from another responsible adult in the household. The proxy respondents are normally people living with a partner on behalf of their partner, and parents on behalf of their adult offspring who live with them.

Attrition

Attrition is the term applied to respondents who begin the survey but subsequently drop out. It has been known for some time that these respondents tend to have different characteristics to those who remain in all waves of the survey, which can, therefore, result in attrition bias. For example, if respondents in a particular age band have a higher tendency to drop out (attrition rate) than respondents in other age bands, then they will be under-represented in subsequent waves of the survey and in estimates.

Website References

Labour Force Survey User Guides	http://www.statistics.gov.uk/statbase/Product.asp?vlnk=1537
Labour Market Guide	http://www.ons.gov.uk/about-statistics/user-guidance/lm-guide/index.html
Labour Market Statistics Statistical Bulletin	http://www.statistics.gov.uk/statbase/product.asp?vlnk=1944
Labour Market Trends	www.statistics.gov.uk/statbase/product.asp?vlnk=550
Economic and Labour Market Review	www.statistics.gov.uk/elmr/
Labour Force Survey Summary Quality Report	http://www.ons.gov.uk/about-statistics/methodology-and-quality/quality/qual-info-economic-social-and-bus-stats/quality-reports-for-social-statistics/index.html
Methodology for the Calculation of Sampling Variability in the Labour Force Survey	http://nswebcopy/about/methodology_by_theme/downloads/LFS_SamplingVariability.pdf
NOMIS	www.nomisweb.co.uk
Summary Quality Report for Labour Market Data Releases	http://www.statistics.gov.uk/cci/article.asp?id=1354
UK Data Archive, University of Essex	http://www.data-archive.ac.uk