

# Consumer Price Inflation, March 2015



Coverage: UK

Date: **14 April 2015**

Geographical Area: UK

Theme: **Economy**

## Main points

- The Consumer Prices Index (CPI) was unchanged in the year to March 2015, that is, a 12-month rate of 0.0%, the same rate as in the year to February 2015.
- Falls in clothing and gas prices produced the largest downward contributions to change in the inflation rate.
- These were offset by a rise in the price of motor fuels and smaller upward contributions from a variety of other products such as food.
- CPIH (not a National Statistic) grew by 0.3% in the year to March 2015, unchanged from February 2015.

## A brief description of Consumer Price Inflation

Consumer price inflation is the speed at which the prices of goods and services bought by households rise or fall. Consumer price inflation is estimated by using price indices. A way to understand a price index is to think of a very large shopping basket containing all the goods and services bought by households. The price index estimates changes to the total cost of this basket. Consumer price indices are published monthly.

A [video](#) and an [infographic](#) explain how consumer price inflation is calculated.

A price index can be used to measure inflation in a number of ways. The most common is to look at how the index has changed over a year. This is calculated by comparing the price index for the latest month with the same month a year ago. This is known as the 12-month inflation rate. This bulletin measures inflation to March 2015, so the 12-month rate measures changes in prices between March 2014 and March 2015.

A range of measures of consumer price and other price inflation are published. [A tale of many price indices](#) summarises information on the different measures.

## Consumer Prices Index (CPI)

### What is the CPI?

The CPI is a measure of consumer price inflation produced to international standards and in line with European regulations. First published in 1997 as the Harmonised Index of Consumer Prices (HICP), the CPI is the inflation measure used in the Government's target for inflation.

The CPI is also used for purposes such as uprating pensions, wages and benefits and can aid in the understanding of inflation on family budgets. For more information see [Users and uses of consumer price inflation statistics \(100.5 Kb Pdf\)](#).

### Latest figure and long-term trend

The CPI 12-month rate (the amount prices change over a year) between March 2014 and March 2015 stood at 0.0%. This is the joint lowest 12-month rate on record alongside the rate in February 2015.

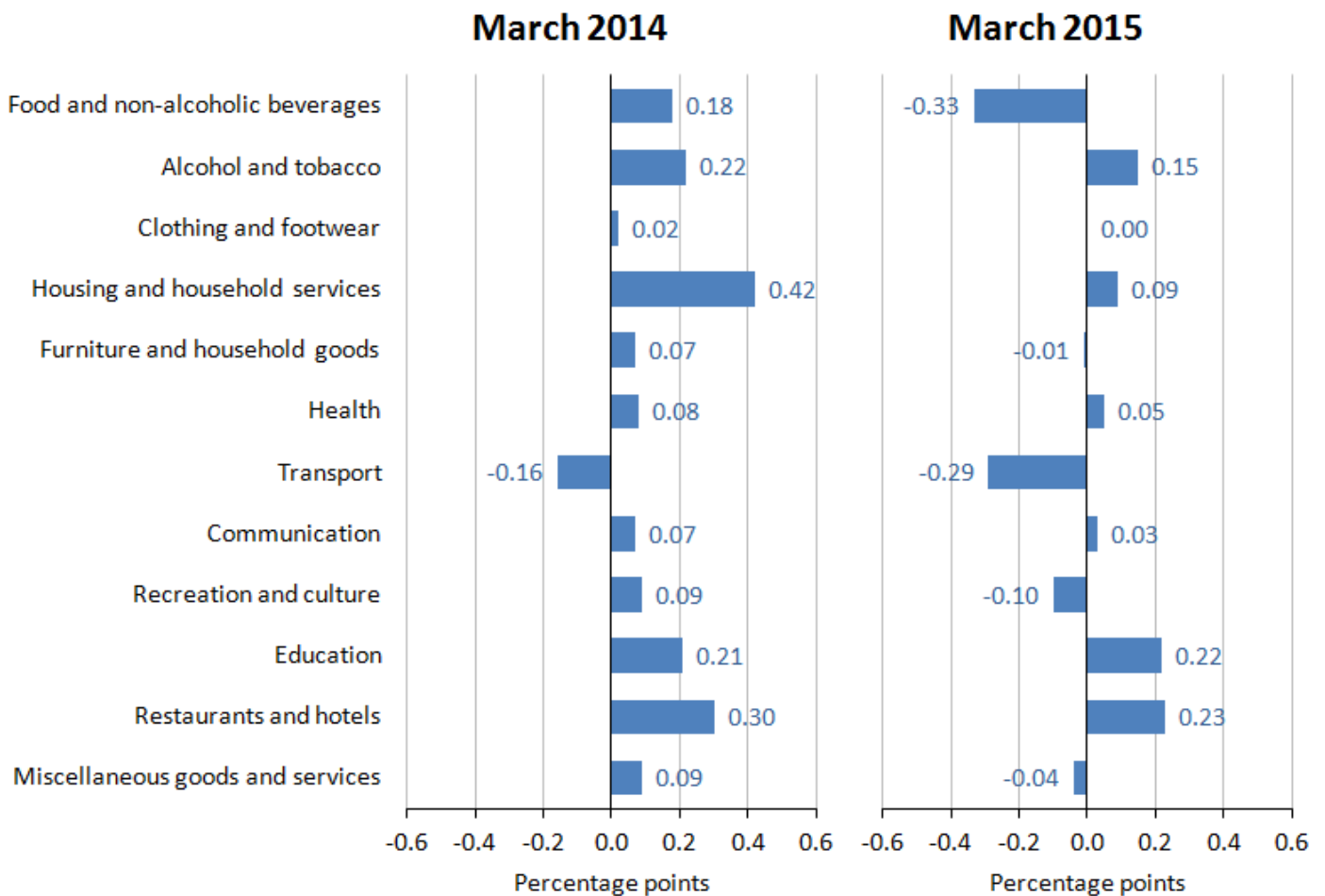
Over the last 5 years, the 3 main contributors to the 12-month inflation rate have been: transport (including motor fuels); housing, water, electricity, gas and other fuels; and restaurants and hotels. Combined, these 3 sectors have, on average, accounted for around half of the 12-month inflation rate.

In the year to March 2015, food prices fell by 3.2% and prices of motor fuels fell by 13.7%. In both cases, the falls were smaller than in the year to February but the 2 groups still provided the largest downward contributions to the 12-month rate for March. In total, the food and motor fuels groups reduced the CPI 12-month rate by approximately 0.8 percentage points. An article was published in November 2014 which outlined some [possible factors that may be affecting prices \(477.2 Kb Pdf\)](#).

Figure A shows the contributions to the CPI 12-month rate in March 2015 compared with the contributions to the 12-month rate a year earlier. A larger version of the chart can be viewed by clicking on it (HTML version only).

**Figure A: Contributions to the CPI 12-month rate: March 2014 and March 2015**

United Kingdom



Source: Office for National Statistics

**Notes:**

1. Individual contributions may not sum to the total due to rounding.
2. More information on the contents of each group can be found in Table 3 in the accompanying consumer price inflation reference tables.

**Download chart**
[XLS](#) [XLS format](#)

(27 Kb)

Figure B shows the CPI 12-month rate over the last 10 years. Table A shows the CPI 1-month rate (the amount prices change between 2 consecutive months), 12-month rate and index values for the last year. A larger version of the chart can be viewed by clicking on it (HTML version only).

**Figure B: CPI 12-month inflation rate for the last 10 years: March 2005 to March 2015**

United Kingdom



Source: Office for National Statistics

**Download chart**

[XLS](#) [XLS format](#)  
(35.5 Kb)

**Table A: CPI index values, 1-month and 12-month rates: March 2014 to March 2015**

United Kingdom

		Index <sup>1</sup> (UK, 2005 = 100)	1-month rate	12-month rate	
<b>2014</b>	Mar	127.7	0.2	1.6	
	Apr	128.1	0.4	1.8	
	May	128.0	-0.1	1.5	
	Jun	128.3	0.2	1.9	
	Jul	127.8	-0.3	1.6	
	Aug	128.3	0.4	1.5	
	Sep	128.4	0.0	1.2	
	Oct	128.5	0.1	1.3	
	Nov	128.2	-0.3	1.0	
	Dec	128.2	0.0	0.5	
	<b>2015</b>	Jan	127.1	-0.9	0.3
		Feb	127.4	0.3	0.0
Mar		127.6	0.2	0.0	

**Table source:** Office for National Statistics**Table notes:**

1. All items Consumer Prices Index.

**Download table**

**XLS** [XLS format](#)  
(28.5 Kb)

**Consumer Prices Index (CPI): What are the main movements?**

This section explains which goods and services had the biggest impact on the change to the 12-month rate between February and March 2015 and, where relevant, considers the longer-term inflationary trends for these goods and services.

The change in the CPI 12-month rate can be calculated by comparing the 12-month rates for 2 consecutive months. An alternative, and equally valid, approach is to calculate it by comparing the price change between the latest 2 months and the price change between the same 2 months a year ago. [Explaining the contribution to change in the 12-month rate \(37.1 Kb Pdf\)](#) is a diagram explaining the calculation.

The CPI rose by 0.2% between February and March 2015 compared with a rise of 0.2% between the same 2 months a year earlier. The 1-month movement was therefore the same in both years and this led to the CPI 12-month rate remaining at 0.0% for a second month.

The largest downward contributions to change in the CPI 12-month rate between February and March 2015 came from:

- **clothing and footwear:** prices, overall, fell by 0.1% between February and March this year, compared with a rise of 1.8% between the same 2 months a year ago. This is the first time that prices have fallen between February and March since the CPI was introduced. Normally prices rise as they continue to recover following the January sales period. The downward contribution came from price movements for a range of women's outerwear, particularly trousers, dresses and cardigans. There was also a smaller downward effect from men's outerwear.
- **housing and household services:** prices, overall, fell by 0.4% between February and March 2015 compared with a smaller fall of 0.1% between the same 2 months a year ago. The downward effect came from changes in gas prices, with average bills falling by more this year than a year ago.
- **restaurants and hotels:** prices, overall, rose by 0.2% between February and March this year compared with a larger rise of 0.5% a year ago.

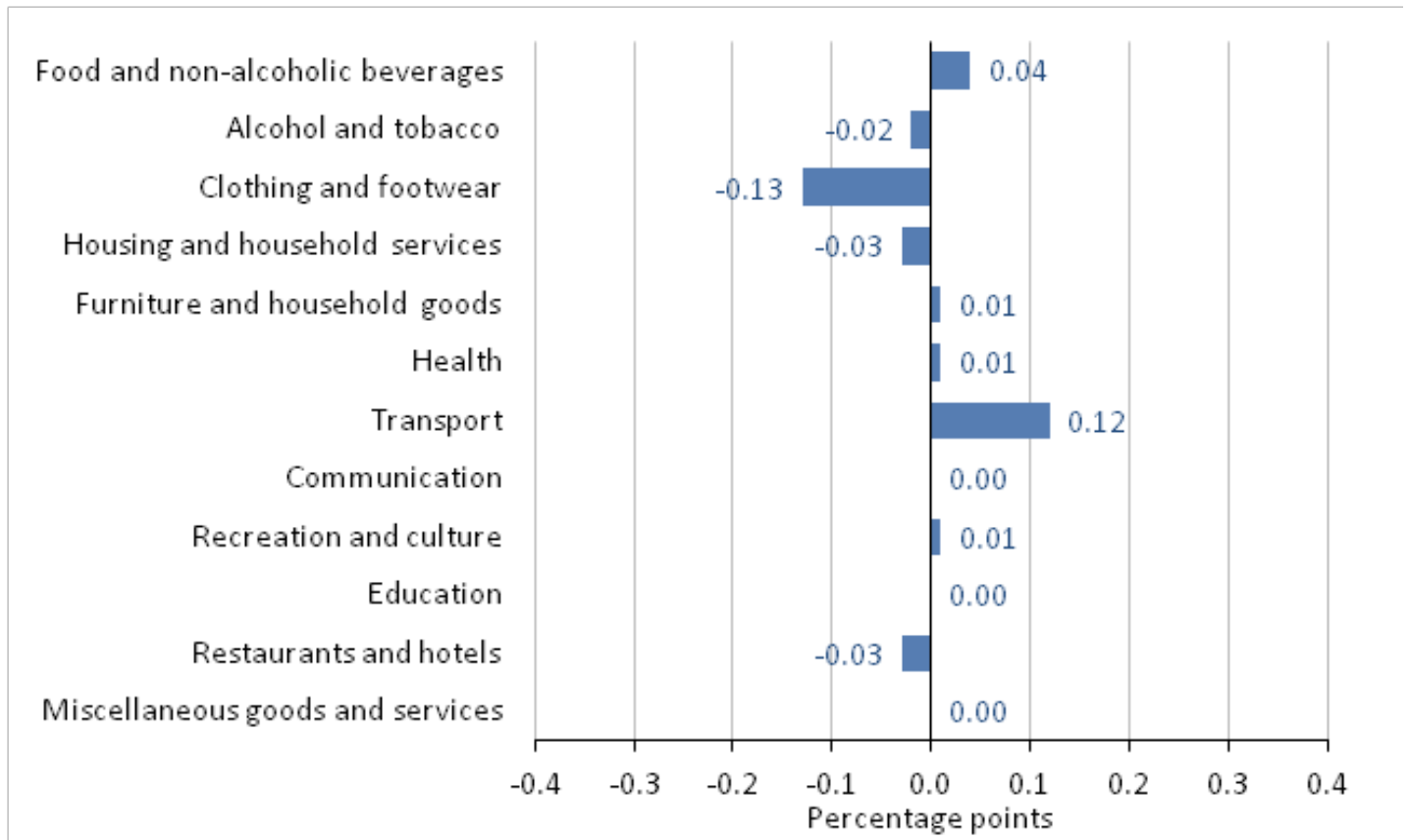
The largest upward contributions to change in the CPI 12-month rate between February and March 2015 came from:

- **transport:** prices, overall, rose by 0.7% between February and March 2015 but were little changed between the same 2 months a year ago. The upward contribution came principally from motor fuels. Average petrol prices rose by 3.8 pence per litre between February and March this year compared with no change between the same 2 months a year ago. Diesel prices also rose this year by 3.5 pence per litre but fell by 0.4 pence per litre a year ago.
- **food and non-alcoholic beverages:** prices, overall, fell by 0.2% between February and March 2015, compared with a larger fall of 0.5% between the same 2 months a year earlier. Small upward effects came from 4 product groups: milk, cheese and eggs; vegetables; sugar, jam, syrups, chocolate and confectionery; and mineral waters, soft drinks and juices. These were partially offset by small downward contributions from meat and fruit.

Figure C shows the contributions to change from each part of the CPI basket of goods and services. A larger version of the chart can be viewed by clicking on it (HTML version only).

**Figure C: Contributions to the change in the CPI 12-month rate: March 2015**

United Kingdom



Source: Office for National Statistics

**Notes:**

1. Individual contributions may not sum to the total due to rounding.
2. More information on the contents of each group can be found in Table 3 in the accompanying consumer price inflation reference tables.

**Download chart**
[XLS](#) [XLS format](#)

(26.5 Kb)

**CPIH**

The National Statistics status of CPIH has been discontinued pending work to investigate and improve the method for measuring owner occupiers' housing costs in this index. [Full details](#) can be found on the UK Statistics Authority website and in an [explanatory note \(313.9 Kb Pdf\)](#) on our website. The improvements from the resulting development work were introduced as part of the February 2015 dataset with the historical series revised back to 2005. Further information on the changes is available in 2 articles: [Improvements to the measurement](#)

**[of Owner Occupiers' Housing Costs and Private Housing Rental Prices \(2.48 Mb Pdf\)](#) and [Revising the weight of Owner Occupiers' Housing in CPIH \(197.4 Kb Pdf\)](#).**

CPIH is a measure of UK consumer price inflation that includes owner occupiers' housing costs (OOH). These are the costs of housing services associated with owning, maintaining and living in one's own home. OOH does not include costs such as utility bills, minor repairs and maintenance, which are already included in the index. CPIH uses an approach called rental equivalence to measure OOH. Rental equivalence uses the rent paid for an equivalent house as a proxy for the costs faced by an owner occupier. In other words this answers the question "how much would I have to pay in rent to live in a home like mine?" for an owner occupier. OOH does not seek to capture increases in house prices. Although this may be inconsistent with some users' expectations of measures of OOH, the inclusion of an asset price and therefore capital gains would make the index less suitable for a measure of consumption. OOH currently accounts for 17.8% of the expenditure weight of CPIH. This compares with a weight of 19.5% in 2005.

Currently, the method of calculation, the population coverage and the basket of goods and services are the same as the Consumer Prices Index (CPI), with the exception of OOH. The method of deriving the weights for CPIH and the data used for these are also the same as for CPI, with the exception of OOH. This can result in some differences from the CPI.

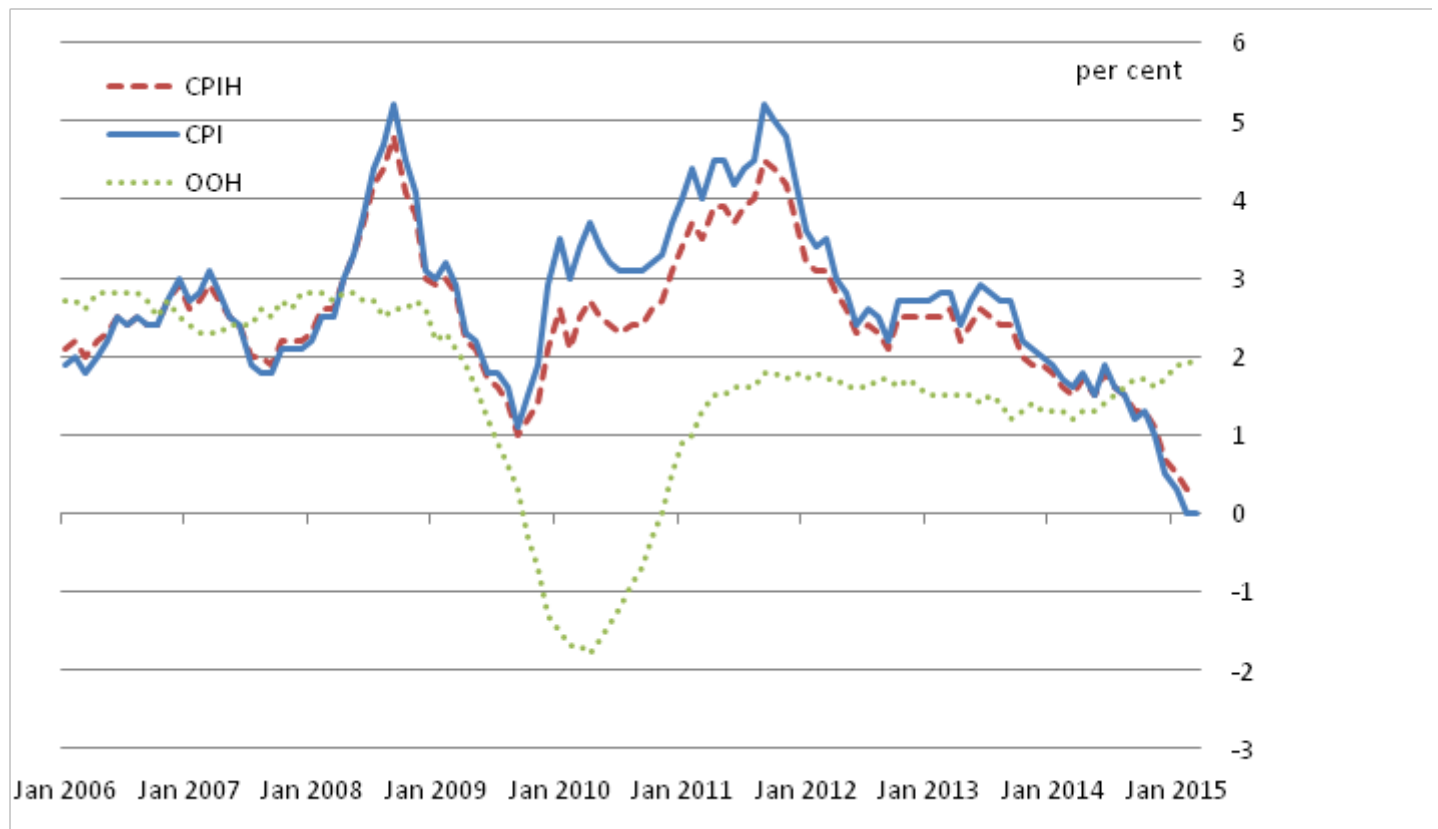
In March 2015, the 12-month rate (the rate at which prices increased between March 2014 and March 2015) for CPIH stood at 0.3%, unchanged from February. The difference between the CPI and CPIH annual rates in March 2015 was 0.3 percentage points, the same as the difference in February, despite a small upward contribution from rising owner occupiers' housing costs.

Figure D shows the CPIH and OOH component 12-month rates since January 2006 (the earliest date for which the CPIH 12-month rate can be calculated). The CPI 12-month rate has been included for comparative purposes. Table B shows the CPIH and OOH component 1-month and 12-month rates and index values for the last year. A larger version of the chart can be viewed by clicking on it (HTML version only).



**Figure D: CPIH, OOH component and CPI 12-month rates since January 2006**

United Kingdom



Source: Office for National Statistics

**Notes:**

1. The National Statistics status of CPIH has been discontinued pending work to investigate and improve the method for measuring owner occupiers' housing costs in this index. The improvements from the resulting development work were introduced as part of the February 2015 dataset with the historical series revised back to 2005.
2. The time series for this chart will be gradually increased up to a time span of 10 years as more periods of data become available.

**Download chart**
[XLS](#) [XLS format](#)

(36.5 Kb)

**Table B: CPIH and OOH component index values, 1-month and 12-month rates: March 2014 to March 2015**

United Kingdom

		CPIH Index <sup>1</sup> (UK, 2005 = 100)	OOH Index <sup>1</sup> (UK, 2005 = 100)	CPIH 1- month <sup>1</sup> rate	OOH 1- month <sup>1</sup> rate	CPIH 12- month <sup>1</sup> rate	OOH 12- month <sup>1</sup> rate
<b>2014</b>	Mar	125.1	113.9	0.2	0.0	1.5	1.2
	Apr	125.5	114.1	0.3	0.2	1.7	1.3
	May	125.5	114.3	0.0	0.2	1.5	1.3
	Jun	125.7	114.4	0.2	0.1	1.8	1.4
	Jul	125.4	114.7	-0.2	0.2	1.6	1.5
	Aug	125.9	115.0	0.4	0.2	1.5	1.6
	Sep	125.9	115.1	0.1	0.1	1.3	1.7
	Oct	126.1	115.3	0.1	0.2	1.3	1.7
	Nov	125.8	115.4	-0.2	0.1	1.1	1.6
	Dec	125.9	115.6	0.0	0.2	0.7	1.7
<b>2015</b>	Jan	125.0	115.9	-0.7	0.2	0.5	1.9
	Feb	125.3	116.0	0.2	0.1	0.3	1.9
	Mar	125.5	116.1	0.2	0.1	0.3	2.0

**Table source:** Office for National Statistics**Table notes:**

1. The National Statistics status of CPIH has been discontinued pending work to investigate and improve the method for measuring owner occupiers' housing costs in this index. The improvements from the resulting development work were introduced as part of the February 2015 dataset with the historical series revised back to 2005.

**Download table**
[XLS](#) [XLS format](#)

(29.5 Kb)

**Retail Prices Index (RPI) and RPIJ**

In accordance with the Statistics and Registration Service Act 2007, the Retail Prices Index and its derivatives have been assessed against the Code of Practice for Official Statistics and found not to meet the required standard for designation as National Statistics. The [full assessment report](#) can be found on the UK Statistics Authority website.

The RPI is a long-standing measure of UK inflation that has historically been used for a wide range of purposes such as the indexation of pensions, rents and index-linked gilts. For further information see [Users and uses of consumer price inflation statistics \(100.5 Kb Pdf\)](#).

RPIJ is an improved variant of the Retail Prices Index, which is calculated using formulae that meet international standards. The rationale for creating RPIJ was to give users a better alternative to the RPI if their needs were for a measure of inflation based on the same population, classifications, weights, etc as the RPI. Currently, RPIJ also acts as an analytical series in that it allows users to see the impact of using the Jevons (which meets international standards) in place of the Carli formula (which does not meet international standards) in the RPI. The use of the different formulae at the elementary aggregate level is currently the only difference between the 2 indices. Detailed goods and services indices are not produced for RPIJ.

In March 2015, the 12-month rate for RPIJ stood at 0.3%, down from 0.4% in the year to February 2015.

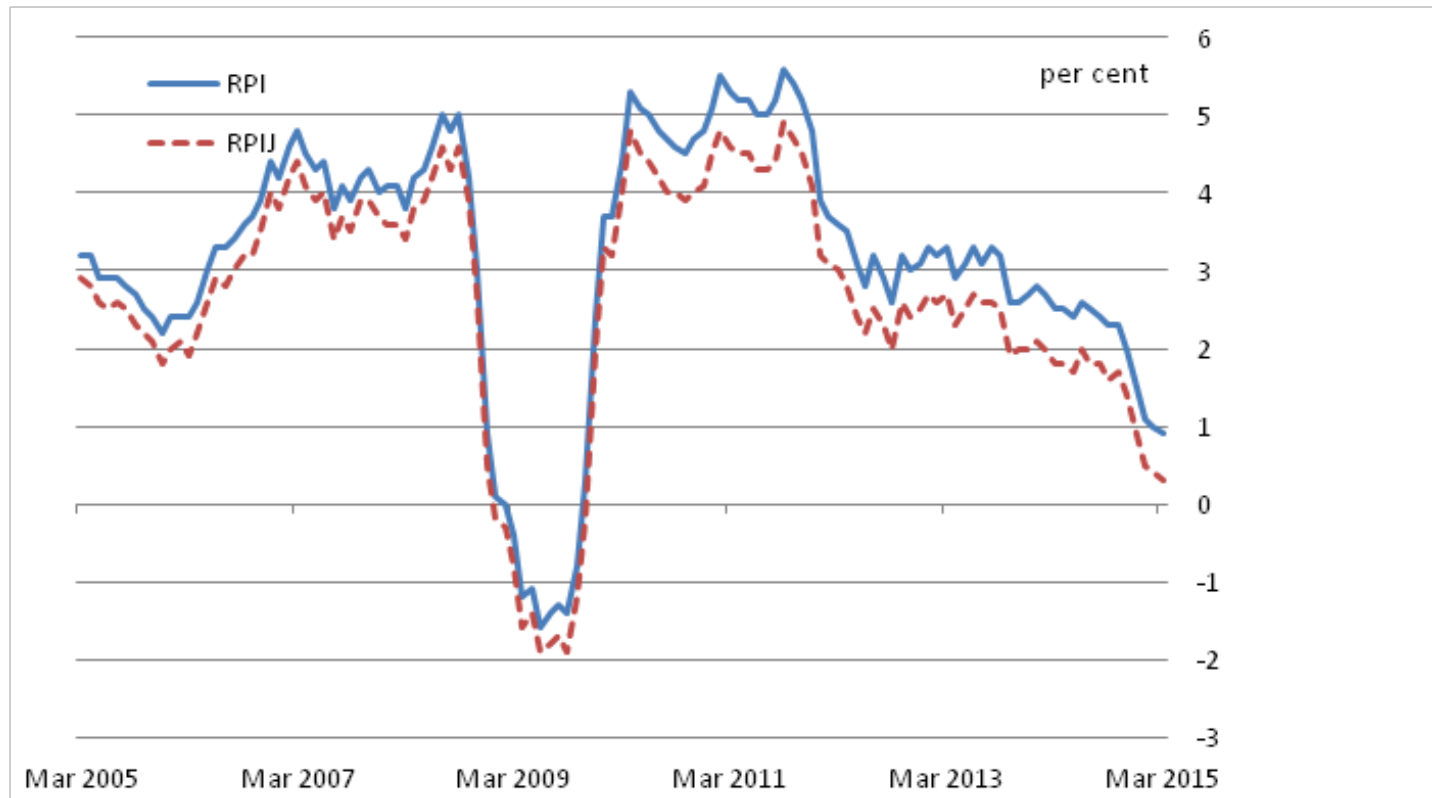
The RPI 12-month rate for March 2015 stood at 0.9%, meaning that it was 0.6 percentage points higher than it would have been had it used formulae that meet international standards.

Figure E shows the RPI and RPIJ 12-month rates for the last 10 years. Over this period, the RPIJ 12-month rate has been, on average, 0.5 percentage points lower than the RPI but the difference has increased to an average of 0.6 percentage points over the last 3 years. Cumulatively, inflation as measured by the RPI is 35.0% over the 10-year period, compared with 28.0% as measured by RPIJ. The use of the Carli formula has therefore added 7.0 percentage points to the change in prices over the last 10 years. A larger version of the chart can be viewed by clicking on it (HTML version only).

Table C shows the RPI and RPIJ 1-month and 12-month rates and index values for the last year.

**Figure E: RPI and RPIJ 12-month rates for the last 10 years: March 2005 to March 2015**

United Kingdom



Source: Office for National Statistics

**Notes:**

1. The RPI has been de-designated as a National Statistic.

**Download chart**
[XLS](#) [XLS format](#)

(34.5 Kb)

**Table C: RPI and RPIJ index values, 1-month and 12-month rates: March 2014 to March 2015**

United Kingdom

		RPI Index <sup>1</sup> (UK, 1987 = 100)	RPIJ Index (UK, 1987 = 100)	RPI 12- month <sup>1</sup> rate	RPIJ 12- month rate	RPI 1- month <sup>1</sup> rate	RPIJ 1- month rate
<b>2014</b>	Mar	254.8	236.7	2.5	1.8	0.2	0.2
	Apr	255.7	237.4	2.5	1.8	0.4	0.3
	May	255.9	237.5	2.4	1.7	0.1	0.0
	Jun	256.3	237.8	2.6	2.0	0.2	0.1
	Jul	256.0	237.5	2.5	1.8	-0.1	-0.1
	Aug	257.0	238.3	2.4	1.8	0.4	0.3
	Sep	257.6	238.8	2.3	1.6	0.2	0.2
	Oct	257.7	238.9	2.3	1.7	0.0	0.0
	Nov	257.1	238.3	2.0	1.4	-0.2	-0.3
	Dec	257.5	238.6	1.6	1.0	0.2	0.1
<b>2015</b>	Jan	255.4	236.5	1.1	0.5	-0.8	-0.9
	Feb	256.7	237.2	1.0	0.4	0.5	0.3
	Mar	257.1	237.4	0.9	0.3	0.2	0.1

Table source: Office for National Statistics

**Table notes:**

1. The RPI has been de-designated as a National Statistic.

**Download table**
[XLS](#) [XLS format](#)

(28 Kb)

For users who want to understand the causes of the difference between the CPI and RPI, please see Table 5 in the [Consumer Price Inflation Reference Tables \(2.22 Mb Excel sheet\)](#) of the March release.

**Guide to data**

Table D outlines where data for all consumer price inflation statistics can be found.

**Table D: Guide to data**

	Statistical Bulletin	Detailed Briefing Note	Reference Tables (Excel Format)	Time Series Dataset
CPI	H, T, D <sup>2</sup>	H, D	H, T, D	T, D
CPIY	:	H	H, T	T
CPI-CT	:	H	H, T	T
CPIH <sup>1</sup>	H, T, D	H	H, T, D	T, D
CPIHY <sup>1</sup>	:	H	H, T	T
RPIJ	H, T	H	H, T	T
RPI <sup>1</sup>	H, T	H, D	H, T, D	T, D
RPIX <sup>1</sup>	:	H	H, T	T
RPIY <sup>1</sup>	:	H	H, T	T
TPI <sup>1</sup>	:	H	H, T	T
RPI Pensioner Indices <sup>1</sup>	:	:	H, T	T
International Comparisons	:	:	H, T	T

**Table source:** Office for National Statistics

**Table notes:**

1. These statistics are not National Statistics.
2. H = Latest headline figures, D = Detailed data (including disaggregations), T = Time series data.

**Download table**

**XLS** [XLS format](#)

(26.5 Kb)

**Background notes**

1. **News**

**Estimated Effect of the Budget on Consumer Price Inflation**

Budgetary measures that come into force in 2015/16 will add an estimated 0.01 percentage points to the CPI. Further details are available in [Estimated Effect of the Budget on CPI and RPI - 2015 \(93.9 Kb Pdf\)](#) which was published on 25 March 2015.

2. **Understanding and accessing the data**

A full description of how consumer price indices are compiled is given in the [Consumer Price Indices Technical Manual \(674.4 Kb Pdf\)](#). This is supplemented by video, infographics and textual information available from the [guidance and methodology section](#) of our website.

A more detailed [quality report \(141.9 Kb Pdf\)](#) for this statistical bulletin is available. The report assesses consumer price inflation statistics against standard dimensions of quality such as relevance, accuracy and accessibility. The report was last updated in October 2013.

The [mini Triennial Review \(1.75 Mb Pdf\)](#) of the CPI and RPI Central Collection of Prices is available.

The most efficient way to access the latest consumer price inflation data and briefing on our website is via the CPI key figure on the [homepage](#).

In response to user feedback, all consumer price inflation data are available in 1 location. The [Consumer Price Inflation Reference Tables \(2.22 Mb Excel sheet\)](#) are provided via an Excel file.

To help users further, very detailed CPI data are now available including the [individual price quotes and item indices](#) that underpin the CPI. Please note, the data that are published are at a level which means that no individual retailer or service provider will be able to be identified. The data published covers January 1996 to December 2014. These data are updated once a quarter with around a 2-month lag with the latest CPI publication. For example, the data will next be updated when the May CPI is published on 16 June 2015, at which point the detailed data published will be extended to March 2015.

Internationally, the CPI is known as the Harmonised Index of Consumer Prices (HICP). HICPs are calculated in each Member State of the European Union according to rules specified in a series of European regulations developed by the European Commission (Eurostat) in conjunction with the EU member states. Eurostat releases figures for the Harmonised Index of Consumer Prices (HICP) for the month of March 2015 for EU member states, together with an EU average, on 17 April 2015. A summary of the latest European data is available from [Eurostat's database tables](#). Further information on HICP for the European Union, Euro area and other EU member states is available from [Eurostat's HICP web page](#).

### 3. Methods - CPI and other measures of inflation

The CPI, CPIH, RPIJ and RPI are compiled using the same underlying price data, based on a large and representative selection of around 700 individual goods and services for which price movements are measured in around 140 randomly selected areas throughout the UK. Around 180,000 separate price quotations are used every month to compile the indices. The outlets in which the prices are collected are selected randomly. Expenditure weights are held constant for 1 year at a time.

The selection of goods and services that are priced to compile these indices is reviewed annually. The contents of the 2015 basket are described in an article [Consumer Price Inflation: The 2015 Basket of Goods and Services \(139.4 Kb Pdf\)](#). The expenditure weights used to compile the indices are also updated each year. Additional details of the updated weights for

2015 are available in an article published on 24 March 2015 entitled [Consumer Price Inflation: 2015 Weights \(431.9 Kb Pdf\)](#).

Rates of change for the CPI and CPIH are calculated from unrounded index levels, rather than from the published indices, which are rounded to 1 decimal place. The use of unrounded indices increases the accuracy of the calculation. The unrounded index levels for the CPI and CPIH are available from tables 64 and 65 of the [Consumer Price Inflation Reference Tables \(2.22 Mb Excel sheet\)](#). By contrast, rates of change for the RPI and RPIJ are calculated from the published rounded indices.

Further information on the methods used to construct the CPI, CPIH, RPI and RPIJ, including differences in the methods used for each index can be found in the [Consumer Price Indices Technical Manual \(674.4 Kb Pdf\)](#). [Users and uses of consumer price inflation statistics \(100.5 Kb Pdf\)](#) provides further details of how consumer price statistics are used more generally.

#### 4. Revisions policy

On 15 October 2013, a [revisions policy \(49.6 Kb Pdf\)](#) was published for the suite of consumer price inflation statistics. The policy reaffirms the existing practices for CPI and RPI and sets out the policies for the new CPIH and RPIJ measures.

In summary, CPI, CPIH and RPIJ are revisable in theory though revisions only occur under exceptional circumstances. The RPI is never revised once published.

#### 5. Publication policy

This bulletin includes the March 2015 data, collected on and around 17 March 2015. Future [publication dates](#) for this statistical bulletin are available to January 2017 (the publication of the December 2016 inflation figures). Publication dates from February 2016 onwards are provisional.

Details of the policy governing the release of new data are available from the Media Relations Office. Also available is a list of the names of those given [pre-release access](#) to the contents of this release.

In line with the Consumer Price Inflation Pre-Release arrangements, an advanced estimate of the CPI was provided to the Governor of the Bank of England and the Chancellor of the Exchequer 4 working days ahead of publication. The Governor shared this information with the MPC, and officials present at the MPC meeting, on Wednesday 8 April 2015. The pre-release access to the March CPI figures was extended to 4 working days from 3.5 working days due to the timing of the Monetary Policy Committee meeting being moved forward half a day.

Consumer price inflation for April 2014 to April 2015 will be published on 19 May 2015.

Follow us on [Twitter](#) or join us at [Facebook](#). View the latest podcasts on [YouTube](#).

Media contact:



Tel: Luke Croydon +44 (0) 845 6041858

Out of hours media line: +44 (0) 7867 906553

Email: [media.relations@ons.gsi.gov.uk](mailto:media.relations@ons.gsi.gov.uk)

Statistical contact:

Tel: Philip Gooding +44 (0) 1633 455896

Email: [philip.gooding@ons.gsi.gov.uk](mailto:philip.gooding@ons.gsi.gov.uk)

Email: [cpi@ons.gsi.gov.uk](mailto:cpi@ons.gsi.gov.uk)

Consumer Price Inflation recorded message (available after 9.45am on release day):

Tel: +44 (0) 800 0113703

Consumer Price Inflation Enquiries:

Tel: +44 (0) 1633 456900

6. Details of the policy governing the release of new data are available by visiting [www.statisticsauthority.gov.uk/assessment/code-of-practice/index.html](http://www.statisticsauthority.gov.uk/assessment/code-of-practice/index.html) or from the Media Relations Office email: [media.relations@ons.gsi.gov.uk](mailto:media.relations@ons.gsi.gov.uk)

These National Statistics are produced to high professional standards and released according to the arrangements approved by the UK Statistics Authority.

## Copyright

© Crown copyright 2015

You may use or re-use this information (not including logos) free of charge in any format or medium, under the terms of the Open Government Licence. To view this licence, visit [www.nationalarchives.gov.uk/doc/open-government-licence/](http://www.nationalarchives.gov.uk/doc/open-government-licence/) or write to the Information Policy Team, The National Archives, Kew, London TW9 4DU, or email: [psi@nationalarchives.gsi.gov.uk](mailto:psi@nationalarchives.gsi.gov.uk).

This document is also available on our website at [www.ons.gov.uk](http://www.ons.gov.uk).

## Statistical contacts

Name	Phone	Department	Email
Philip Gooding	+44 (0)1633 455896	Prices, ONS	<a href="mailto:cpi@ons.gsi.gov.uk">cpi@ons.gsi.gov.uk</a>

**Next Publication Date:**

19 May 2015

**Issuing Body:**

Office for National Statistics

**Media Contact Details:**

Telephone: 0845 604 1858  
(8.30am-5.30pm Weekdays)

Emergency out of hours (limited service): 07867 906553

Email:

[media.relations@ons.gsi.gov.uk](mailto:media.relations@ons.gsi.gov.uk)

# 1 CPI: Detailed figures by division<sup>1</sup>

	Food and non-alcoholic beverages	Alcoholic beverages and tobacco	Clothing and footwear	Housing, water, electricity, gas & other fuels	Furniture, household equipment & routine maintenance	Health <sup>2</sup>	Transport	Communication	Recreation and culture	Education <sup>2</sup>	Restaurants and hotels	Miscellaneous goods and services <sup>2</sup>	CPI (overall index)
COICOP Division	01	02	03	04	05	06	07	08	09	10	11	12	
<b>Weights</b>													
	CHZR	CHZS	CHZT	CHZU	CHZV	CHZW	CHZX	CHZY	CHZZ	CJUJ	CJUV	CJUW	CHZQ
2015	110	43	70	128	59	25	149	31	147	26	121	91	1 000
<b>Monthly indices (2005=100)</b>													
	D7BU	D7BV	D7BW	D7BX	D7BY	D7BZ	D7C2	D7C3	D7C4	D7C5	D7C6	D7C7	D7BT
2013 Mar	142.9	145.6	82.1	149.1	119.8	124.7	136.5	110.8	102.0	201.5	128.1	120.0	125.6
Apr	143.9	148.9	82.0	150.1	118.3	126.1	135.6	111.0	102.0	201.5	128.7	120.2	125.9
May	143.9	149.6	83.0	149.8	119.6	126.1	136.2	111.4	101.7	201.5	129.1	120.1	126.1
Jun	143.2	149.1	81.4	149.9	119.0	126.0	136.3	111.5	101.6	201.5	129.3	120.3	125.9
Jul	143.5	150.1	78.8	150.5	117.8	126.9	137.5	111.8	101.1	201.5	129.5	120.4	125.8
Aug	144.2	150.0	80.4	150.5	119.9	127.1	138.9	111.6	101.1	201.5	129.5	120.5	126.4
Sep	144.4	150.7	83.7	150.7	120.1	127.4	137.0	111.7	101.7	205.4	130.1	120.9	126.8
Oct	144.6	151.1	84.6	150.6	119.7	127.2	134.9	112.0	101.9	222.2	130.3	120.7	126.9
Nov	144.6	151.0	85.2	150.6	119.6	127.1	134.2	111.8	102.3	222.2	130.5	121.0	127.0
Dec	145.1	149.2	84.4	154.0	121.6	127.2	135.6	112.2	101.9	222.2	130.5	120.7	127.5
2014 Jan	145.4	153.8	79.9	153.8	117.9	128.0	134.7	112.8	101.4	222.2	130.3	120.4	126.7
Feb	146.1	152.4	80.8	153.9	120.8	128.6	135.1	113.0	102.2	222.2	130.8	120.7	127.4
Mar	145.4	152.8	82.2	153.7	121.1	128.8	135.1	113.3	102.6	222.2	131.4	121.1	127.7
Apr	144.7	154.1	83.0	154.6	120.1	129.8	137.7	113.2	102.5	222.2	131.6	120.6	128.1
May	143.0	156.4	83.0	154.7	120.7	129.9	136.8	112.6	102.9	222.2	132.1	120.4	128.0
Jun	143.2	156.5	83.4	154.7	120.9	130.0	137.6	112.5	102.9	222.2	132.6	120.3	128.3
Jul	143.0	155.4	78.7	155.2	119.2	130.2	139.3	112.6	102.7	222.2	133.1	119.8	127.8
Aug	142.6	156.9	80.7	155.3	120.3	130.8	140.5	112.5	102.6	222.2	132.9	120.0	128.3
Sep	142.4	158.0	83.9	155.4	121.0	130.5	137.1	112.7	102.5	226.5	133.1	120.4	128.4
Oct	142.5	159.0	84.4	155.5	119.7	130.0	135.6	112.7	102.9	244.3	133.6	120.2	128.5
Nov	142.2	157.0	85.0	155.6	119.9	129.7	133.9	112.4	102.7	244.3	133.5	120.1	128.2
Dec	142.6	156.7	84.1	155.5	121.8	129.9	133.7	113.1	102.5	244.3	133.5	120.0	128.2
2015 Jan	141.7	158.9	81.0	155.3	118.8	130.8	131.0	113.1	101.5	244.3	133.3	119.9	127.1
Feb	141.3	158.2	82.1	155.3	120.4	131.0	131.5	114.0	101.4	244.3	133.6	120.2	127.4
Mar	141.1	158.0	82.1	154.7	120.9	131.5	132.5	114.3	101.9	244.3	134.0	120.5	127.6
<b>Percentage change on a year earlier</b>													
	D7G8	D7G9	D7GA	D7GB	D7GC	D7GD	D7GE	D7GF	D7GG	D7GH	D7GI	D7GJ	D7G7
2013 Mar	3.7	6.3	-0.4	4.5	0.2	2.3	1.7	3.3	1.8	19.7	3.1	1.1	2.8
Apr	4.6	5.7	-0.6	4.2	0.1	2.5	-0.1	3.2	1.4	19.7	2.5	1.1	2.4
May	4.3	6.2	0.7	4.2	0.6	2.4	1.1	2.7	1.6	19.7	2.5	1.0	2.7
Jun	3.8	6.4	3.1	4.4	-	2.0	1.7	2.9	1.3	19.7	2.5	1.5	2.9
Jul	3.9	6.3	2.5	4.3	0.1	2.7	1.5	2.8	0.7	19.7	2.5	1.5	2.8
Aug	4.1	6.0	1.6	4.2	1.1	2.9	1.2	2.5	0.9	19.7	2.4	1.2	2.7
Sep	4.3	5.4	1.1	4.2	0.7	2.9	1.1	2.6	0.9	21.4	2.6	0.9	2.7
Oct	3.9	5.4	1.0	4.1	1.0	2.6	-0.3	2.7	0.7	10.3	2.8	0.7	2.2
Nov	2.8	5.8	1.1	3.4	1.0	2.5	0.2	2.8	1.1	10.3	2.3	0.5	2.1
Dec	1.9	5.8	1.6	3.7	1.4	2.5	0.5	3.3	0.8	10.3	2.3	0.3	2.0
2014 Jan	2.0	4.5	1.7	3.6	0.6	2.9	0.5	2.8	0.4	10.3	2.2	0.7	1.9
Feb	1.8	4.1	0.8	3.2	1.6	3.4	-0.4	2.0	0.7	10.3	2.3	0.8	1.7
Mar	1.7	5.0	0.2	3.1	1.1	3.4	-1.0	2.3	0.6	10.3	2.6	0.9	1.6
Apr	0.5	3.5	1.2	3.0	1.5	2.9	1.6	1.9	0.5	10.3	2.3	0.3	1.8
May	-0.6	4.6	-0.1	3.2	0.9	3.1	0.4	1.0	1.1	10.3	2.3	0.3	1.5
Jun	-	5.0	2.4	3.2	1.6	3.1	0.9	0.9	1.3	10.3	2.6	-	1.9
Jul	-0.4	3.6	-0.2	3.2	1.1	2.6	1.3	0.7	1.5	10.3	2.8	-0.6	1.6
Aug	-1.1	4.6	0.4	3.2	0.4	2.9	1.2	0.8	1.4	10.3	2.6	-0.4	1.5
Sep	-1.4	4.9	0.2	3.1	0.8	2.5	0.1	0.9	0.7	10.3	2.3	-0.5	1.2
Oct	-1.4	5.2	-0.2	3.2	0.1	2.2	0.5	0.6	1.0	10.0	2.5	-0.3	1.3
Nov	-1.7	4.0	-0.2	3.3	0.3	2.0	-0.2	0.5	0.3	10.0	2.4	-0.8	1.0
Dec	-1.7	5.0	-0.3	1.0	0.2	2.1	-1.4	0.7	0.6	10.0	2.3	-0.6	0.5
2015 Jan	-2.5	3.3	1.4	1.0	0.8	2.2	-2.8	0.2	0.1	10.0	2.4	-0.4	0.3
Feb	-3.3	3.8	1.7	0.9	-0.3	1.8	-2.7	0.9	-0.8	10.0	2.2	-0.4	-
Mar	-3.0	3.4	-0.2	0.7	-0.2	2.1	-1.9	0.9	-0.7	10.0	2.0	-0.5	-

Key: - zero or negligible

Source: Office for National Statistics

1 More detailed CPI data are available at <http://www.ons.gov.uk>

2 The coverage of these categories was extended in January 2000; further extensions to coverage came into effect in January 2001 for health and miscellaneous goods and services; the coverage of miscellaneous goods and services was further extended with effect from January 2002.

## 2 CPI, CPIH, RPI and RPIJ Indices: the latest three years<sup>1</sup>

	CPI		CPIH (NOT NATIONAL STATISTICS <sup>2</sup> )		RPI (NOT NATIONAL STATISTICS <sup>3</sup> )		RPIJ	
	Index (2005=100)	Percentage change over 12 months	Index (2005=100)	Percentage change over 12 months	Index (Jan 13, 1987=100)	Percentage change over 12 months	Index (1987=100)	Percentage change over 12 months
	D7BT	D7G7	L522	L55O	CHAW	CZBH	KVR8	KVR9
2012 Mar	122.2	3.5	120.1	3.1	240.8	3.6	226.5	3.0
Apr	122.9	3.0	120.8	2.8	242.5	3.5	227.9	2.8
May	122.8	2.8	120.7	2.6	242.4	3.1	227.8	2.4
Jun	122.3	2.4	120.3	2.3	241.8	2.8	227.1	2.2
Jul	122.5	2.6	120.4	2.4	242.1	3.2	227.4	2.5
Aug	123.1	2.5	121.0	2.3	243.0	2.9	228.2	2.3
Sep	123.5	2.2	121.4	2.1	244.2	2.6	229.2	2.0
Oct	124.2	2.7	122.0	2.5	245.6	3.2	230.5	2.6
Nov	124.4	2.7	122.1	2.5	245.6	3.0	230.5	2.4
Dec	125.0	2.7	122.6	2.5	246.8	3.1	231.5	2.5
2013 Jan	124.4	2.7	122.1	2.5	245.8	3.3	230.6	2.7
Feb	125.2	2.8	122.8	2.5	247.6	3.2	231.7	2.6
Mar	125.6	2.8	123.2	2.6	248.7	3.3	232.6	2.7
Apr	125.9	2.4	123.4	2.2	249.5	2.9	233.2	2.3
May	126.1	2.7	123.7	2.4	250.0	3.1	233.5	2.5
Jun	125.9	2.9	123.5	2.6	249.7	3.3	233.2	2.7
Jul	125.8	2.8	123.5	2.5	249.7	3.1	233.2	2.6
Aug	126.4	2.7	123.9	2.4	251.0	3.3	234.2	2.6
Sep	126.8	2.7	124.3	2.4	251.9	3.2	235.0	2.5
Oct	126.9	2.2	124.4	2.0	251.9	2.6	234.9	1.9
Nov	127.0	2.1	124.5	1.9	252.1	2.6	235.1	2.0
Dec	127.5	2.0	125.0	1.9	253.4	2.7	236.2	2.0
2014 Jan	126.7	1.9	124.3	1.8	252.6	2.8	235.4	2.1
Feb	127.4	1.7	124.9	1.6	254.2	2.7	236.3	2.0
Mar	127.7	1.6	125.1	1.5	254.8	2.5	236.7	1.8
Apr	128.1	1.8	125.5	1.7	255.7	2.5	237.4	1.8
May	128.0	1.5	125.5	1.5	255.9	2.4	237.5	1.7
Jun	128.3	1.9	125.7	1.8	256.3	2.6	237.8	2.0
Jul	127.8	1.6	125.4	1.6	256.0	2.5	237.5	1.8
Aug	128.3	1.5	125.9	1.5	257.0	2.4	238.3	1.8
Sep	128.4	1.2	125.9	1.3	257.6	2.3	238.8	1.6
Oct	128.5	1.3	126.1	1.3	257.7	2.3	238.9	1.7
Nov	128.2	1.0	125.8	1.1	257.1	2.0	238.3	1.4
Dec	128.2	0.5	125.9	0.7	257.5	1.6	238.6	1.0
2015 Jan	127.1	0.3	125.0	0.5	255.4	1.1	236.5	0.5
Feb	127.4	–	125.3	0.3	256.7	1.0	237.2	0.4
Mar	127.6	–	125.5	0.3	257.1	0.9	237.4	0.3

Key: - zero or negligible

Source: Office for National Statistics

1 More detailed CPI, CPIH, RPI and RPIJ data are available at: <http://www.ons.gov.uk>

2 The National Statistics status of CPIH has been discontinued pending work to investigate and improve the method for measuring owner occupiers' housing costs in this index. The improvements from the resulting development work were introduced as part of the February 2015 dataset with the historical series revised back to 2005.

3 In accordance with the Statistics and Registration Service Act 2007, the Retail Prices Index and its derivatives have been assessed against the code of Practice for Official Statistics and found not to meet the required standards for designation as National Statistics. A full report can be found at: <http://www.statisticsauthority.gov.uk/>

### 3 CPI: Detailed figures by divisions, groups and classes

	Weights Index (2005=100)			Percentage change over 1 month					Percentage change over 12 months					
	2015	2014 Mar	2015 Mar	2014 Mar	2015 Mar	2014 Jul	2014 Aug	2014 Sep	2014 Oct	2014 Nov	2014 Dec	2015 Jan	2015 Feb	2015 Mar
	<b>CPI (Overall Index)</b>	1 000	127.7	127.6	0.2	0.2	1.6	1.5	1.2	1.3	1.0	0.5	0.3	-
01 Food and non-alcoholic beverages	110	145.4	141.1	-0.5	-0.2	-0.4	-1.1	-1.4	-1.4	-1.7	-1.7	-2.5	-3.3	-3.0
02 Alcoholic beverages and tobacco	43	152.8	158.0	0.3	-0.1	3.6	4.6	4.9	5.2	4.0	5.0	3.3	3.8	3.4
03 Clothing and footwear	70	82.2	82.1	1.8	-0.1	-0.2	0.4	0.2	-0.2	-0.2	-0.3	1.4	1.7	-0.2
04 Housing, water, electricity, gas and other fuels	128	153.7	154.7	-0.1	-0.4	3.2	3.2	3.1	3.2	3.3	1.0	1.0	0.9	0.7
05 Furniture, household equipment and maintenance	59	121.1	120.9	0.3	0.4	1.1	0.4	0.8	0.1	0.3	0.2	0.8	-0.3	-0.2
06 Health	25	128.8	131.5	0.2	0.4	2.6	2.9	2.5	2.2	2.0	2.1	2.2	1.8	2.1
07 Transport	149	135.1	132.5	-	0.7	1.3	1.2	0.1	0.5	-0.2	-1.4	-2.8	-2.7	-1.9
08 Communication	31	113.3	114.3	0.2	0.2	0.7	0.8	0.9	0.6	0.5	0.7	0.2	0.9	0.9
09 Recreation and culture	147	102.6	101.9	0.4	0.4	1.5	1.4	0.7	1.0	0.3	0.6	0.1	-0.8	-0.7
10 Education	26	222.2	244.3	-	-	10.3	10.3	10.3	10.0	10.0	10.0	10.0	10.0	10.0
11 Restaurants and hotels	121	131.4	134.0	0.5	0.2	2.8	2.6	2.3	2.5	2.4	2.3	2.4	2.2	2.0
12 Miscellaneous goods and services	91	121.1	120.5	0.3	0.2	-0.6	-0.4	-0.5	-0.3	-0.8	-0.6	-0.4	-0.4	-0.5
<b>All goods</b>	532	122.3	119.8	0.3	0.2	0.8	0.6	0.2	0.3	-0.2	-1.0	-1.5	-2.0	-2.1
<b>All services</b>	468	134.4	137.6	0.2	0.1	2.5	2.7	2.4	2.5	2.4	2.3	2.4	2.4	2.4
<b>All items CPI excluding Energy, food, alcoholic beverages and tobacco</b>	771	119.5	120.8	0.4	0.2	1.8	1.9	1.5	1.5	1.2	1.3	1.4	1.2	1.0
<b>01.1 Food</b>	97	145.9	141.3	-0.5	-0.2	-0.6	-1.2	-1.5	-1.6	-1.7	-1.9	-2.8	-3.4	-3.2
01.1.1 Bread and cereals	16	144.1	139.8	-0.4	-0.3	-1.0	-1.6	-2.7	-0.9	-2.2	-2.5	-2.3	-3.1	-3.0
01.1.2 Meat	22	142.6	138.3	-	-0.7	-	0.1	-0.1	-1.5	-2.0	-1.8	-1.7	-2.4	-3.0
01.1.3 Fish	4	163.5	159.8	-1.0	-1.9	5.6	1.9	0.3	-0.4	-	0.2	1.1	-1.3	-2.2
01.1.4 Milk, cheese and eggs	14	137.9	132.9	-1.0	1.2	0.8	-1.7	-0.5	-0.1	-0.2	-1.4	-3.5	-5.7	-3.6
01.1.5 Oils and fats	2	167.9	155.1	2.5	-2.7	-0.4	-4.6	-1.5	-1.5	-4.1	-2.4	-3.3	-2.7	-7.6
01.1.6 Fruit	10	143.5	142.1	1.8	0.1	-1.6	-0.6	-2.4	1.3	2.6	2.5	-0.1	0.7	-1.0
01.1.7 Vegetables including potatoes and tubers	14	147.7	138.7	-1.9	-0.3	-4.9	-5.6	-6.9	-7.0	-6.6	-7.1	-7.9	-7.6	-6.1
01.1.8 Sugar, jam, syrups, chocolate and confectionery	12	154.2	153.8	-0.9	0.6	0.8	1.6	2.8	-0.1	0.8	0.9	-0.5	-1.8	-0.3
01.1.9 Food products (nec)	3	131.5	123.9	-0.9	-1.2	2.1	-	-0.6	-2.6	-4.5	-3.1	-7.3	-5.5	-5.8
<b>01.2 Non-alcoholic beverages</b>	13	142.5	140.2	-0.9	-0.2	1.1	-0.1	-	-0.5	-1.4	-0.7	-0.8	-2.3	-1.6
01.2.1 Coffee, tea and cocoa	3	150.9	146.2	0.3	-2.2	-0.6	-1.1	-1.5	-2.5	-3.5	1.6	-2.9	-0.7	-3.1
01.2.2 Mineral waters, soft drinks and juices	10	139.7	138.1	-1.2	0.4	1.5	0.1	0.4	0.1	-0.8	-1.3	-0.2	-2.7	-1.1
<b>02.1 Alcoholic beverages</b>	19	127.7	125.2	0.6	-0.2	-2.3	0.2	0.6	0.8	-1.0	1.3	-1.9	-1.2	-2.0
02.1.1 Spirits	5	135.8	135.0	2.6	-1.0	-4.9	-0.4	-0.6	1.6	-3.1	-0.5	-2.0	3.0	-0.6
02.1.2 Wine	9	130.2	127.0	0.6	-0.2	-0.7	1.4	1.4	1.2	-0.1	3.5	1.0	-1.7	-2.5
02.1.3 Beer	5	112.8	110.2	-1.9	0.6	-2.0	-1.3	0.5	-0.7	0.1	-0.5	-6.8	-4.7	-2.3
<b>02.2 Tobacco</b>	24	173.1	186.0	0.1	-0.1	8.1	8.0	8.1	8.5	7.6	7.7	7.3	7.6	7.5
<b>03.1 Clothing</b>	60	82.0	81.6	1.9	-0.3	-0.5	0.4	0.2	-0.3	-0.1	-0.4	1.6	1.7	-0.5
03.1.2 Garments	54	80.5	79.9	2.0	-0.4	-0.5	0.6	0.4	-0.3	-0.1	-0.3	1.5	1.8	-0.7
03.1.3 Other clothing and clothing accessories	5	98.2	99.5	0.5	0.8	-1.9	-1.8	-1.1	-0.7	-0.8	-2.2	2.5	0.9	1.3
03.1.4 Cleaning, repair and hire of clothing	1	128.8	131.8	0.2	0.3	2.7	2.8	2.6	2.6	2.7	2.4	2.3	2.3	2.4
<b>03.2 Footwear including repairs</b>	10	82.6	83.9	1.4	1.6	1.4	0.3	0.1	0.2	-0.7	0.1	0.3	1.3	1.5
<b>04.1 Actual rentals for housing</b>	72	124.3	127.9	-	0.1	2.3	2.3	2.4	2.7	2.7	2.7	2.7	2.8	2.9
<b>04.3 Regular maintenance and repair of the dwelling</b>	2	131.1	130.8	-	0.1	0.3	0.2	-0.3	-0.5	-	0.1	-0.8	-0.3	-0.2
04.3.1 Materials for maintenance and repair	1	141.1	139.9	-	-	0.1	-	-0.8	-1.0	-	0.1	-1.8	-0.9	-0.9
04.3.2 Services for maintenance and repair	1	118.1	118.6	-	0.1	0.5	0.4	0.3	-	-	0.1	0.1	0.3	0.4
<b>04.4 Water supply and misc. services for the dwelling</b>	12	148.4	152.0	-	-	2.4	2.4	2.4	2.4	2.4	2.4	2.4	2.4	2.4
04.4.1 Water supply	6	148.0	150.3	-	-	1.6	1.6	1.6	1.6	1.6	1.6	1.6	1.6	1.6
04.4.3 Sewerage collection	6	149.3	154.1	-	-	3.2	3.2	3.2	3.2	3.2	3.2	3.2	3.2	3.2
<b>04.5 Electricity, gas and other fuels</b>	42	220.1	212.8	-0.4	-1.3	4.7	4.7	4.5	4.5	4.5	-2.1	-2.0	-2.4	-3.3
04.5.1 Electricity	20	199.8	198.6	-0.3	-	5.6	5.6	5.6	5.6	5.6	-0.8	-0.7	-0.9	-0.6
04.5.2 Gas	20	250.5	240.0	-0.3	-2.6	5.1	5.1	5.1	5.1	5.1	-1.6	-1.0	-1.9	-4.2
04.5.3 Liquid fuels	1	188.1	136.5	-2.9	-3.0	-9.0	-8.9	-12.2	-13.9	-13.3	-22.6	-30.8	-27.3	-27.4
04.5.4 Solid fuels	1	182.9	185.4	-	0.1	2.3	2.2	2.3	3.0	2.1	1.9	1.1	1.2	1.4
<b>05.1 Furniture, furnishings and carpets</b>	21	122.9	121.8	0.2	0.8	0.6	-0.2	0.4	-0.2	-	0.7	0.7	-1.5	-0.9
05.1.1 Furniture and furnishings	15	121.5	120.8	0.2	1.8	0.7	-0.8	0.8	-1.0	-1.2	-0.3	0.2	-2.1	-0.5
05.1.2 Carpets and other floor coverings	6	125.7	124.0	0.2	-1.7	-1.0	1.3	-1.9	1.5	3.3	3.6	1.5	0.5	-1.4
<b>05.2 Household textiles</b>	6	100.2	97.9	0.8	0.2	-2.4	-2.6	-1.6	-1.8	-1.8	-2.4	-1.2	-1.7	-2.2
<b>05.3 Household appliances, fitting and repairs</b>	8	109.2	107.5	0.5	0.2	-0.8	-1.8	-1.2	-2.3	-0.9	-2.0	-1.0	-1.2	-1.5
05.3.1/2 Major appliances and small electric goods	7	108.9	107.3	0.6	0.2	-0.5	-1.7	-0.9	-2.5	-0.9	-2.1	-0.9	-1.1	-1.5
05.3.3 Repair of household appliances	1	110.3	107.8	-0.3	-	-3.4	-3.4	-3.4	-1.1	-1.4	-1.5	-2.5	-2.5	-2.2
<b>05.4 Glassware, tableware and household utensils</b>	6	118.0	118.4	-0.5	0.8	5.8	2.2	3.0	1.5	1.0	2.1	1.3	-0.9	0.3
<b>05.5 Tools and equipment for house and garden</b>	5	131.5	135.5	0.8	0.2	3.6	4.1	4.5	4.5	3.8	3.7	3.1	3.7	3.0
<b>05.6 Goods and services for routine maintenance</b>	13	133.5	135.5	0.2	-0.1	2.5	2.2	1.9	1.1	1.2	0.1	1.9	1.9	1.5
05.6.1 Non-durable household goods	5	135.3	134.4	0.2	-0.6	1.5	1.2	0.2	-1.0	-0.9	-3.7	0.5	0.2	-0.7
05.6.2 Domestic services and household services	8	127.7	131.4	0.2	0.1	3.0	2.9	2.9	2.4	2.5	2.5	2.8	2.9	2.9
<b>06.1 Medical products, appliances and equipment</b>	12	109.1	111.0	0.3	0.8	2.6	3.1	2.2	2.0	1.5	1.8	2.2	1.3	1.7
06.1.1 Pharmaceutical products	7	112.5	115.7	0.6	1.6	2.5	3.7	2.3	2.8	1.9	2.3	3.1	1.9	2.9
06.1.2/3 Other medical and therapeutic equipment	5	104.9	105.0	-0.2	-0.4	2.7	2.3	2.2	0.9	0.9	1.0	0.7	0.3	0.1

Key:- zero or negligible .. not available (nec) not elsewhere covered

# 3 CPI: Detailed figures by divisions, groups and classes

continued

	Weights Index (2005=100)			Percentage change over 1 month				Percentage change over 12 months						
	2015	2014	2015	2014	2015	2014	2014	2014	2014	2014	2014	2015	2015	2015
		Mar	Mar	Mar	Mar	Mar	Jul	Aug	Sep	Oct	Nov	Dec	Jan	Feb
<b>06.2 Out-patient services</b>	5	124.5	126.9	0.1	0.2	1.7	1.9	1.9	1.7	1.8	1.9	1.9	1.9	2.0
06.2.1/3 Medical services & paramedical services	3	119.2	120.5	-	0.1	1.5	1.5	1.5	1.1	1.2	1.3	1.0	1.1	1.1
06.2.2 Dental services	2	130.5	134.5	0.2	0.4	1.9	2.2	2.3	2.3	2.4	2.4	2.8	2.8	3.1
<b>06.3 Hospital services</b>	8	160.5	164.6	-	-	3.5	3.5	3.3	2.8	2.8	2.6	2.5	2.5	2.6
<b>07.1 Purchase of vehicles</b>	40	102.5	102.0	-	-0.2	1.1	1.5	1.1	0.4	-0.3	-0.4	-0.1	-0.3	-0.5
07.1.1A New cars	24	113.0	114.8	-	-	0.9	1.2	1.2	1.3	1.4	1.3	1.4	1.6	1.6
07.1.1B Second-hand cars	14	85.7	82.2	-0.1	-0.8	1.0	1.8	0.4	-1.3	-3.0	-3.3	-2.9	-3.3	-4.0
07.1.2/3 Motorcycles and bicycles	2	120.5	125.9	1.1	1.7	3.7	3.0	4.5	3.6	2.8	3.8	4.3	3.9	4.6
<b>07.2 Operation of personal transport equipment</b>	77	142.7	135.0	-0.1	1.5	-0.3	-1.6	-2.1	-1.2	-1.7	-3.8	-6.8	-6.9	-5.4
07.2.1 Spare parts and accessories	6	122.0	120.3	0.1	-	1.6	3.4	-0.3	-0.3	-0.9	-1.6	-1.4	-1.3	-1.4
07.2.2 Fuels and lubricants	34	149.5	128.9	-0.1	3.4	-2.9	-5.7	-6.0	-4.8	-5.9	-10.5	-16.2	-16.6	-13.7
07.2.3 Maintenance and repairs	23	138.7	141.8	-0.2	0.1	2.2	2.1	2.0	2.3	2.4	2.6	1.6	2.0	2.3
07.2.4 Other services	14	126.1	128.5	-	0.1	2.5	2.3	1.8	2.0	1.9	2.1	2.2	1.9	1.9
<b>07.3 Transport services</b>	32	168.5	176.2	-	-	4.9	6.6	4.0	4.9	3.7	2.8	3.5	4.4	4.5
07.3.1 Passenger transport by railway	12	155.8	160.4	-0.5	-0.9	2.7	3.4	3.2	4.0	4.5	3.9	3.5	3.3	3.0
07.3.2 Passenger transport by road	12	135.7	139.3	-0.3	-0.8	1.2	0.8	1.7	1.3	0.9	0.8	1.7	3.1	2.6
07.3.3 Passenger transport by air	6	136.9	146.3	1.9	2.7	3.7	5.5	1.6	7.6	2.7	2.3	4.0	6.0	6.8
07.3.4 Passenger transport by sea and inland waterway	2	150.8	163.2	-0.9	2.3	6.8	7.3	4.6	3.8	2.3	0.9	2.8	4.8	8.2
<b>08.1 Postal services</b>	2	215.9	223.0	-	-	3.7	3.7	3.7	3.7	3.3	3.3	3.3	3.3	3.3
<b>08.2/3 Telephone and telefax equipment and services</b>	29	109.8	110.5	0.2	0.2	0.5	0.6	0.7	0.4	0.3	0.6	-	0.7	0.7
<b>09.1 Audio-visual equipment and related products</b>	23	45.0	41.2	0.1	-0.5	-2.4	-2.1	-4.8	-5.2	-7.8	-7.2	-6.3	-7.8	-8.3
09.1.1 Reception and reproduction of sound and pictures	5	44.5	39.6	-0.1	-0.5	-3.8	-4.4	-4.9	-6.5	-8.4	-10.5	-9.7	-10.7	-11.1
09.1.2 Photographic, cinematographic and optical equipment	3	12.3	11.7	-1.6	-1.8	-9.0	-10.8	-11.8	-11.8	-13.0	-7.9	-7.6	-4.4	-4.6
09.1.3 Data processing equipment	9	32.7	28.0	0.4	-0.3	0.2	-2.8	-8.9	-7.4	-12.2	-9.8	-9.7	-13.8	-14.4
09.1.4 Recording media	5	80.3	79.7	0.8	-	-1.8	4.3	2.8	0.6	-0.8	-2.4	-	-	-0.8
09.1.5 Repair of audio-visual equipment & related products	1	119.8	121.1	-	0.2	-0.7	-0.7	-0.4	0.2	0.3	0.8	0.9	0.9	1.0
<b>09.2 Oth. major durables for recreation &amp; culture</b>	10	123.1	124.0	-	-	2.2	2.2	2.2	2.3	2.0	1.9	1.6	0.7	0.7
09.2.1/2 Major durables for in/outdoor recreation	10	123.1	124.0	-	-	2.2	2.2	2.2	2.3	2.0	1.9	1.6	0.7	0.7
<b>09.3 Other recreational items, gardens and pets</b>	36	101.0	99.4	1.3	1.6	1.4	-0.1	-1.3	1.2	0.2	0.4	-0.9	-1.9	-1.6
09.3.1 Games, toys and hobbies	21	88.3	86.0	2.0	2.5	1.0	-1.3	-3.1	1.3	-0.5	-0.1	-1.6	-3.0	-2.6
09.3.2 Equipment for sport and open-air recreation	4	100.2	100.4	0.6	2.1	2.1	2.6	1.2	0.1	-0.1	-0.8	-0.5	-1.3	0.2
09.3.3 Gardens, plants and flowers	4	114.6	112.3	-0.2	-0.1	-	-1.5	-0.9	-0.4	0.3	1.0	-0.8	-2.1	-2.0
09.3.4/5 Pets, related products and services	7	137.4	137.8	0.2	-0.6	2.7	2.4	2.3	2.2	2.0	2.0	0.9	1.1	0.3
<b>09.4 Recreational and cultural services</b>	31	135.8	140.1	0.3	0.6	2.9	2.7	3.4	3.1	3.4	3.6	3.1	2.9	3.2
09.4.1 Recreational and sporting services	8	137.3	142.3	0.1	0.1	2.0	2.3	2.7	2.9	3.1	3.0	3.7	3.6	3.6
09.4.2 Cultural services	23	134.9	139.0	0.4	0.8	3.2	2.9	3.8	3.1	3.5	3.9	2.9	2.6	3.0
<b>09.5 Books, newspapers and stationery</b>	14	134.7	136.8	-0.2	0.3	6.3	8.0	6.3	5.4	4.3	5.1	3.8	1.0	1.5
09.5.1 Books	4	122.3	122.4	-0.6	2.0	9.7	17.5	11.4	8.2	4.9	10.3	5.8	-2.5	0.1
09.5.2 Newspapers and periodicals	5	152.5	156.0	0.2	-1.0	7.5	6.0	5.8	5.9	4.9	4.1	4.0	3.6	2.3
09.5.3/4 Misc. printed matter, stationery, drawing materials	5	124.1	125.9	-0.3	0.2	2.1	2.3	2.6	2.3	2.9	1.6	1.3	0.9	1.4
<b>09.6 Package holidays</b>	33	127.8	128.4	0.1	-0.1	0.9	1.2	1.2	0.9	0.8	0.8	0.7	0.7	0.5
<b>10.0 Education</b>	26	222.2	244.3	-	-	10.3	10.3	10.3	10.0	10.0	10.0	10.0	10.0	10.0
<b>11.1 Catering services</b>	100	133.2	135.4	0.3	0.1	2.5	2.5	2.1	2.4	2.3	2.1	1.9	1.9	1.7
11.1.1 Restaurants & cafes	91	133.6	136.2	0.3	0.2	2.5	2.5	2.3	2.6	2.4	2.2	2.1	2.1	2.0
11.1.2 Canteens	9	129.0	128.1	0.3	-0.4	2.1	2.2	0.8	0.6	0.9	0.8	0.3	-	-0.7
<b>11.2 Accommodation services</b>	21	120.8	124.6	1.4	0.9	4.2	3.5	3.3	2.8	2.6	3.3	4.5	3.7	3.1
<b>12.1 Personal care</b>	30	117.8	116.5	0.5	0.5	-0.6	-0.4	-0.8	-0.5	-1.9	-0.8	-0.6	-1.1	-1.2
12.1.1 Hairdressing and personal grooming establishments	7	124.7	126.7	0.3	-	1.5	1.3	1.4	1.7	1.7	1.6	1.7	1.8	1.6
12.1.2/3 Appliances and products for personal care	23	115.5	113.1	0.6	0.6	-1.3	-0.9	-1.5	-1.2	-3.0	-1.6	-1.3	-2.0	-2.0
<b>12.3 Personal effects (nec)</b>	14	135.7	135.6	0.6	0.5	0.2	1.1	0.9	-0.1	-0.1	0.2	-0.9	-0.1	-0.1
12.3.1 Jewellery, clocks and watches	9	151.3	150.5	0.1	-0.3	-0.1	-	-	-	0.3	0.4	-0.5	-0.1	-0.5
12.3.2 Other personal effects	5	106.4	107.0	1.3	2.0	0.5	2.8	2.2	-0.4	-0.9	-0.3	-1.9	-	0.6
<b>12.4 Social protection</b>	13	138.4	144.0	0.2	0.2	3.0	3.0	3.3	3.5	3.4	3.4	3.8	4.0	4.1
<b>12.5 Insurance</b>	10	165.3	165.3	0.1	-0.2	2.2	1.8	2.3	2.6	2.4	1.1	-0.1	0.3	-
12.5.2 House contents insurance	2	100.7	100.4	0.7	-0.1	2.9	2.6	1.2	3.6	3.6	-0.1	-1.1	0.6	-0.3
12.5.3 Health insurance	3	180.8	184.4	-	-	4.5	4.5	4.5	3.8	3.8	3.8	2.0	2.0	2.0
12.5.4 Transport insurance	5	192.8	190.7	-0.2	-0.3	-0.8	-1.5	0.8	0.6	0.3	-	-0.9	-1.0	-1.1
<b>12.6 Financial services (nec)</b>	12	96.3	92.2	0.2	-0.4	-4.7	-4.8	-4.6	-4.1	-4.1	-4.1	-3.5	-3.7	-4.3
12.6.2 Other financial services (nec)	12	96.3	92.2	0.2	-0.4	-4.7	-4.8	-4.6	-4.1	-4.1	-4.1	-3.5	-3.7	-4.3
<b>12.7 Other services (nec)</b>	12	132.7	132.7	-0.3	0.3	-	-	-0.2	-0.3	-0.3	-1.1	-0.1	-0.6	-

Key:- zero or negligible .. not available (nec) not elsewhere covered

Source: Office for National Statistics

# 4 CPIH: Detailed figures by divisions, groups and classes<sup>1</sup>

	Weights Index (2005=100)			Percentage change over 1 month					Percentage change over 12 months					
	2015	2014	2015	2014	2015	2014	2014	2014	2014	2014	2015	2015	2015	
		Mar	Mar	Mar	Mar	Mar	Jul	Aug	Sep	Oct	Nov	Dec	Jan	Feb
<b>CPIH (overall index) (NOT NATIONAL STATISTICS<sup>1</sup>)</b>	1 000	125.1	125.5	0.2	0.2	1.6	1.5	1.3	1.3	1.1	0.7	0.5	0.3	0.3
01 Food and non-alcoholic beverages	90	145.6	141.3	-0.5	-0.2	-0.3	-1.1	-1.3	-1.4	-1.7	-1.7	-2.6	-3.3	-3.0
02 Alcoholic beverages and tobacco	35	152.8	157.9	0.3	-0.1	3.6	4.7	4.9	5.3	4.0	5.0	3.2	3.8	3.3
03 Clothing and footwear	58	82.3	82.1	1.8	-0.1	-0.2	0.4	0.2	-0.2	-0.2	-0.3	1.4	1.7	-0.2
04 Housing, water, electricity, gas and other fuels	284	126.2	128.0	-	-0.1	2.2	2.2	2.2	2.3	2.3	1.4	1.5	1.5	1.5
05 Furniture, household equipment and maintenance	49	121.4	121.0	0.3	0.4	1.0	0.3	0.7	-	0.2	0.1	0.6	-0.4	-0.3
06 Health	20	129.0	131.7	0.2	0.5	2.5	2.8	2.4	2.2	2.0	2.1	2.1	1.8	2.1
07 Transport	124	135.5	132.9	-	0.7	1.2	1.0	-	0.5	-0.2	-1.4	-2.8	-2.7	-1.9
08 Communication	25	113.7	114.6	0.2	0.2	0.7	0.8	0.8	0.5	0.5	0.7	0.1	0.8	0.8
09 Recreation and culture	118	103.0	102.3	0.4	0.4	1.6	1.5	0.7	1.0	0.3	0.5	0.1	-0.8	-0.7
10 Education	22	222.2	244.3	-	-	10.3	10.3	10.3	10.0	10.0	10.0	10.0	10.0	10.0
11 Restaurants and hotels	99	131.3	133.9	0.5	0.2	2.7	2.6	2.3	2.4	2.3	2.3	2.3	2.2	1.9
12 Miscellaneous goods and services	76	120.9	120.2	0.3	0.2	-0.6	-0.5	-0.5	-0.4	-0.8	-0.6	-0.5	-0.5	-0.5
<b>04.2 Owner occupiers housing costs</b>	178	113.9	116.1	-	0.1	1.5	1.6	1.7	1.7	1.6	1.7	1.9	1.9	2.0
<b>All goods</b>	437	122.5	119.9	0.3	0.2	0.8	0.6	0.2	0.3	-0.2	-1.0	-1.5	-2.0	-2.1
<b>All services</b>	563	127.1	130.0	0.1	0.1	2.2	2.3	2.1	2.2	2.1	2.1	2.2	2.3	2.2
<b>CPIH excluding Energy, food, alcoholic beverages &amp; tobacco</b>	813	118.3	119.8	0.3	0.2	1.7	1.8	1.5	1.5	1.3	1.4	1.5	1.4	1.2
<b>01.1 Food</b>	80	146.0	141.4	-0.5	-0.2	-0.6	-1.2	-1.6	-1.6	-1.8	-1.9	-2.8	-3.4	-3.2
01.1.1 Bread and cereals	13	144.1	139.8	-0.4	-0.3	-1.0	-1.6	-2.7	-0.9	-2.2	-2.5	-2.3	-3.1	-3.0
01.1.2 Meat	18	142.6	138.3	-	-0.7	-	0.1	-0.1	-1.5	-2.0	-1.8	-1.7	-2.4	-3.0
01.1.3 Fish	4	163.5	159.8	-1.0	-1.9	5.6	1.9	0.3	-0.4	-	0.2	1.1	-1.3	-2.2
01.1.4 Milk, cheese and eggs	11	137.9	132.9	-1.0	1.2	0.8	-1.7	-0.5	-0.1	-0.2	-1.4	-3.5	-5.7	-3.6
01.1.5 Oils and fats	2	167.9	155.1	2.5	-2.7	-0.4	-4.6	-1.5	-1.5	-4.1	-2.4	-3.3	-2.7	-7.6
01.1.6 Fruit	8	143.5	142.1	1.8	0.1	-1.6	-0.6	-2.4	1.3	2.6	2.5	-0.1	0.7	-1.0
01.1.7 Vegetables including potatoes and tubers	12	147.7	138.7	-1.9	-0.3	-4.9	-5.6	-6.9	-7.0	-6.6	-7.1	-7.9	-7.6	-6.1
01.1.8 Sugar, jam, syrups, chocolate and confectionery	10	154.2	153.8	-0.9	0.6	0.8	1.6	2.8	-0.1	0.8	0.9	-0.5	-1.8	-0.3
01.1.9 Food products (nec)	2	131.5	123.9	-0.9	-1.2	2.1	-	-0.6	-2.6	-4.5	-3.1	-7.3	-5.5	-5.8
<b>01.2 Non-alcoholic beverages</b>	10	142.0	139.9	-0.8	-0.2	1.3	0.1	0.2	-0.4	-1.2	-0.5	-0.8	-2.1	-1.4
01.2.1 Coffee, tea and cocoa	2	150.9	146.2	0.3	-2.2	-0.6	-1.1	-1.5	-2.5	-3.5	1.6	-2.9	-0.7	-3.1
01.2.2 Mineral waters, soft drinks and juices	8	139.7	138.1	-1.2	0.4	1.5	0.1	0.4	0.1	-0.8	-1.3	-0.2	-2.7	-1.1
<b>02.1 Alcoholic beverages</b>	15	127.7	125.2	0.6	-0.2	-2.4	0.1	0.6	0.9	-1.0	1.2	-2.0	-1.2	-2.0
02.1.1 Spirits	4	135.8	135.0	2.6	-1.0	-4.9	-0.4	-0.6	1.6	-3.1	-0.5	-2.0	3.0	-0.6
02.1.2 Wine	7	130.2	127.0	0.6	-0.2	-0.7	1.4	1.4	1.2	-0.1	3.5	1.0	-1.7	-2.5
02.1.3 Beer	4	112.8	110.2	-1.9	0.6	-2.0	-1.3	0.5	-0.7	0.1	-0.5	-6.8	-4.7	-2.3
<b>02.2 Tobacco</b>	20	173.1	186.0	0.1	-0.1	8.1	8.0	8.1	8.5	7.6	7.7	7.3	7.6	7.5
<b>03.1 Clothing</b>	50	82.2	81.8	1.8	-0.3	-0.5	0.4	0.2	-0.3	-0.1	-0.4	1.6	1.7	-0.5
03.1.2 Garments	45	80.5	79.9	2.0	-0.4	-0.5	0.6	0.4	-0.3	-0.1	-0.3	1.5	1.8	-0.7
03.1.3 Other clothing and clothing accessories	4	98.2	99.5	0.5	0.8	-1.9	-1.8	-1.1	-0.7	-0.8	-2.2	2.5	0.9	1.3
03.1.4 Cleaning, repair and hire of clothing	1	128.8	131.8	0.2	0.3	2.7	2.8	2.6	2.6	2.7	2.4	2.3	2.3	2.4
<b>03.2 Footwear including repairs</b>	8	82.6	83.9	1.4	1.6	1.4	0.3	0.1	0.2	-0.7	0.1	0.3	1.3	1.5
<b>04.1 Actual rentals for housing</b>	60	124.3	127.9	-	0.1	2.3	2.3	2.4	2.7	2.7	2.7	2.7	2.8	2.9
<b>04.2 Owner occupiers housing costs</b>	178	113.9	116.1	-	0.1	1.5	1.6	1.7	1.7	1.6	1.7	1.9	1.9	2.0
<b>04.3 Regular maintenance and repair of the dwelling</b>	2	130.5	130.2	-	0.1	0.3	0.2	-0.4	-0.5	-	0.1	-0.8	-0.3	-0.2
04.3.1 Materials for maintenance and repair	1	141.1	139.9	-	-	0.1	-	-0.8	-1.0	-	0.1	-1.8	-0.9	-0.9
04.3.2 Services for maintenance and repair	1	118.1	118.6	-	0.2	0.5	0.4	0.3	-	-	0.2	0.1	0.3	0.4
<b>04.4 Water supply and misc. services for the dwelling</b>	10	148.2	151.8	-	-	2.4	2.4	2.4	2.4	2.4	2.4	2.4	2.4	2.4
04.4.1 Water supply	5	148.0	150.3	-	-	1.6	1.6	1.6	1.6	1.6	1.6	1.6	1.6	1.6
04.4.3 Sewerage collection	5	149.3	154.1	-	-	3.2	3.2	3.2	3.2	3.2	3.2	3.2	3.2	3.2
<b>04.5 Electricity, gas and other fuels</b>	34	218.3	210.7	-0.4	-1.3	4.5	4.5	4.4	4.3	4.3	-2.3	-2.2	-2.6	-3.5
04.5.1 Electricity	16	199.8	198.6	-0.3	-	5.6	5.6	5.6	5.6	5.6	-0.8	-0.7	-0.9	-0.6
04.5.2 Gas	16	250.5	240.0	-0.3	-2.6	5.1	5.1	5.1	5.1	5.1	-1.6	-1.0	-1.9	-4.2
04.5.3 Liquid fuels	1	188.1	136.5	-2.9	-3.0	-9.0	-8.9	-12.2	-13.9	-13.3	-22.6	-30.8	-27.3	-27.4
04.5.4 Solid fuels	1	182.9	185.4	-	0.1	2.3	2.2	2.3	3.0	2.1	1.9	1.1	1.2	1.4
<b>05.1 Furniture, furnishings and carpets</b>	18	123.2	122.1	0.2	0.9	0.6	-0.2	0.5	-0.2	-	0.6	0.6	-1.5	-0.8
05.1.1 Furniture and furnishings	13	121.5	120.8	0.2	1.8	0.7	-0.8	0.8	-1.0	-1.2	-0.3	0.2	-2.1	-0.5
05.1.2 Carpets and other floor coverings	5	125.7	124.0	0.2	-1.7	-1.0	1.3	-1.9	1.5	3.3	3.6	1.5	0.5	-1.4
<b>05.2 Household textiles</b>	5	100.2	97.9	0.8	0.2	-2.4	-2.6	-1.6	-1.8	-1.8	-2.4	-1.2	-1.7	-2.2
<b>05.3 Household appliances, fitting and repairs</b>	7	109.3	107.6	0.5	0.2	-1.0	-1.9	-1.3	-2.3	-0.9	-2.0	-1.1	-1.2	-1.6
05.3.1/2 Major appliances and small electric goods	6	108.9	107.3	0.6	0.2	-0.5	-1.7	-0.9	-2.5	-0.9	-2.1	-0.9	-1.1	-1.5
05.3.3 Repair of household appliances	1	110.3	107.8	-0.3	-	-3.4	-3.4	-3.4	-1.1	-1.4	-1.5	-2.5	-2.5	-2.2
<b>05.4 Glassware, tableware and household utensils</b>	5	118.0	118.4	-0.5	0.8	5.8	2.2	3.0	1.5	1.0	2.1	1.3	-0.9	0.3
<b>05.5 Tools and equipment for house and garden</b>	4	131.5	135.5	0.8	0.2	3.6	4.1	4.5	4.5	3.8	3.7	3.1	3.7	3.0
<b>05.6 Goods and services for routine maintenance</b>	10	133.5	135.5	0.2	-0.2	2.4	2.2	1.8	1.1	1.1	-	1.9	1.8	1.5
05.6.1 Non-durable household goods	4	135.3	134.4	0.2	-0.6	1.5	1.2	0.2	-1.0	-0.9	-3.7	0.5	0.2	-0.7
05.6.2 Domestic services and household services	6	127.7	131.4	0.2	0.1	3.0	2.9	2.9	2.4	2.5	2.5	2.8	2.9	2.9
<b>06.1 Medical products, appliances and equipment</b>	10	109.0	110.9	0.3	0.8	2.5	3.0	2.2	2.0	1.5	1.8	2.0	1.2	1.7
06.1.1 Pharmaceutical products	6	112.5	115.7	0.6	1.6	2.5	3.7	2.3	2.8	1.9	2.3	3.1	1.9	2.9
06.1.2/3 Other medical and therapeutic equipment	4	104.9	105.0	-0.2	-0.4	2.7	2.3	2.2	0.9	0.9	1.0	0.7	0.3	0.1

# 4 CPIH: Detailed figures by divisions, groups and classes<sup>1</sup>

continued

	Weights Index (2005=100)			Percentage change over 1 month				Percentage change over 12 months						
	2015	2014 Mar	2015 Mar	2014 Mar	2015 Mar	2014 Jul	2014 Aug	2014 Sep	2014 Oct	2014 Nov	2014 Dec	2015 Jan	2015 Feb	2015 Mar
<b>06.2 Out-patient services</b>	4	124.5	127.1	0.1	0.2	1.8	1.9	1.9	1.7	1.8	1.9	1.9	1.9	2.1
06.2.1/3 Medical services & paramedical services	2	119.2	120.5	-	0.1	1.5	1.5	1.5	1.1	1.2	1.3	1.0	1.1	1.1
06.2.2 Dental services	2	130.5	134.5	0.2	0.4	1.9	2.2	2.3	2.3	2.4	2.4	2.8	2.8	3.1
<b>06.3 Hospital services</b>	6	160.5	164.6	-	-	3.5	3.5	3.3	2.8	2.8	2.6	2.5	2.5	2.6
<b>07.1 Purchase of vehicles</b>	34	102.3	101.8	-	-0.2	1.1	1.5	1.0	0.4	-0.3	-0.4	-0.1	-0.3	-0.5
07.1.1A New cars	20	113.0	114.8	-	-	0.9	1.2	1.2	1.3	1.4	1.3	1.4	1.6	1.6
07.1.1B Second-hand cars	12	85.7	82.2	-0.1	-0.8	1.0	1.8	0.4	-1.3	-3.0	-3.3	-2.9	-3.3	-4.0
07.1.2/3 Motorcycles and bicycles	2	120.5	125.9	1.1	1.7	3.7	3.0	4.5	3.6	2.8	3.8	4.3	3.9	4.6
<b>07.2 Operation of personal transport equipment</b>	63	143.0	135.3	-0.1	1.5	-0.3	-1.6	-2.1	-1.2	-1.7	-3.8	-6.8	-6.9	-5.4
07.2.1 Spare parts and accessories	5	122.0	120.3	0.1	-	1.6	3.4	-0.3	-0.3	-0.9	-1.6	-1.4	-1.3	-1.4
07.2.2 Fuels and lubricants	28	149.5	128.9	-0.1	3.4	-2.9	-5.7	-6.0	-4.8	-5.9	-10.5	-16.2	-16.6	-13.7
07.2.3 Maintenance and repairs	19	138.7	141.8	-0.2	0.1	2.2	2.1	2.0	2.3	2.4	2.6	1.6	2.0	2.3
07.2.4 Other services	11	126.1	128.5	-	0.1	2.5	2.3	1.8	2.0	1.9	2.1	2.2	1.9	1.9
<b>07.3 Transport services</b>	27	168.1	176.0	-	0.1	4.5	5.9	3.8	4.9	3.8	2.8	3.6	4.6	4.7
07.3.1 Passenger transport by railway	10	155.8	160.4	-0.5	-0.9	2.7	3.4	3.2	4.0	4.5	3.9	3.5	3.3	3.0
07.3.2 Passenger transport by road	10	135.7	139.3	-0.3	-0.8	1.2	0.8	1.7	1.3	0.9	0.8	1.7	3.1	2.6
07.3.3 Passenger transport by air	5	136.9	146.3	1.9	2.7	3.7	5.5	1.6	7.6	2.7	2.3	4.0	6.0	6.8
07.3.4 Passenger transport by sea and inland waterway	2	150.8	163.2	-0.9	2.3	6.8	7.3	4.6	3.8	2.3	0.9	2.8	4.8	8.2
<b>08.1 Postal services</b>	1	215.9	223.0	-	-	3.7	3.7	3.7	3.7	3.3	3.3	3.3	3.3	3.3
<b>08.2/3 Telephone and telefax equipment and services</b>	24	109.8	110.5	0.2	0.2	0.5	0.6	0.7	0.4	0.3	0.6	-	0.7	0.7
<b>09.1 Audio-visual equipment and related products</b>	18	45.9	42.0	0.1	-0.4	-2.1	-1.9	-4.6	-5.1	-7.7	-7.2	-6.5	-8.0	-8.5
09.1.1 Reception and reproduction of sound and pictures	4	44.5	39.6	-0.1	-0.5	-3.8	-4.4	-4.9	-6.5	-8.4	-10.5	-9.7	-10.7	-11.1
09.1.2 Photographic, cinematographic and optical equipment	2	12.3	11.7	-1.6	-1.8	-9.0	-10.8	-11.8	-11.8	-13.0	-7.9	-7.6	-4.4	-4.6
09.1.3 Data processing equipment	7	32.7	28.0	0.4	-0.3	0.2	-2.8	-8.9	-7.4	-12.2	-9.8	-9.7	-13.8	-14.4
09.1.4 Recording media	4	80.3	79.7	0.8	-	-1.8	4.3	2.8	0.6	-0.8	-2.4	-	-	-0.8
09.1.5 Repair of audio-visual equipment & related products	1	119.8	121.1	-	0.2	-0.7	-0.7	-0.4	0.2	0.3	0.8	0.9	0.9	1.0
<b>09.2 Oth. major durables for recreation &amp; culture</b>	8	123.1	124.0	-	-	2.2	2.2	2.2	2.3	2.0	1.9	1.6	0.7	0.7
09.2.1/2 Major durables for in/outdoor recreation	8	123.1	124.0	-	-	2.2	2.2	2.2	2.3	2.0	1.9	1.6	0.7	0.7
<b>09.3 Other recreational items, gardens and pets</b>	29	101.0	99.5	1.2	1.6	1.5	-	-1.2	1.2	0.2	0.4	-0.8	-1.8	-1.5
09.3.1 Games, toys and hobbies	17	88.3	86.0	2.0	2.5	1.0	-1.3	-3.1	1.3	-0.5	-0.1	-1.6	-3.0	-2.6
09.3.2 Equipment for sport and open-air recreation	3	100.2	100.4	0.6	2.1	2.1	2.6	1.2	0.1	-0.1	-0.8	-0.5	-1.3	0.2
09.3.3 Gardens, plants and flowers	3	114.6	112.3	-0.2	-0.1	-	-1.5	-0.9	-0.4	0.3	1.0	-0.8	-2.1	-2.0
09.3.4/5 Pets, related products and services	6	137.4	137.8	0.2	-0.6	2.7	2.4	2.3	2.2	2.0	2.0	0.9	1.1	0.3
<b>09.4 Recreational and cultural services</b>	25	135.8	140.1	0.3	0.6	2.9	2.8	3.4	3.1	3.4	3.6	3.1	2.9	3.2
09.4.1 Recreational and sporting services	7	137.3	142.3	0.1	0.1	2.0	2.3	2.7	2.9	3.1	3.0	3.7	3.6	3.6
09.4.2 Cultural services	18	134.9	139.0	0.4	0.8	3.2	2.9	3.8	3.1	3.5	3.9	2.9	2.6	3.0
<b>09.5 Books, newspapers and stationery</b>	11	134.9	137.0	-0.2	0.2	6.2	7.8	6.2	5.3	4.2	5.0	3.7	1.1	1.5
09.5.1 Books	3	122.3	122.4	-0.6	2.0	9.7	17.5	11.4	8.2	4.9	10.3	5.8	-2.5	0.1
09.5.2 Newspapers and periodicals	4	152.5	156.0	0.2	-1.0	7.5	6.0	5.8	5.9	4.9	4.1	4.0	3.6	2.3
09.5.3/4 Misc. printed matter, stationery, drawing materials	4	124.1	125.9	-0.3	0.2	2.1	2.3	2.6	2.3	2.9	1.6	1.3	0.9	1.4
<b>09.6 Package holidays</b>	27	127.8	128.4	0.1	-0.1	0.9	1.2	1.2	0.9	0.8	0.8	0.7	0.7	0.5
<b>10.0 Education</b>	22	222.2	244.3	-	-	10.3	10.3	10.3	10.0	10.0	10.0	10.0	10.0	10.0
<b>11.1 Catering services</b>	82	133.2	135.4	0.3	0.1	2.5	2.5	2.1	2.4	2.3	2.1	1.9	1.9	1.7
11.1.1 Restaurants & cafes	75	133.6	136.2	0.3	0.2	2.5	2.5	2.3	2.6	2.4	2.2	2.1	2.1	2.0
11.1.2 Canteens	7	129.0	128.1	0.3	-0.4	2.1	2.2	0.8	0.6	0.9	0.8	0.3	-	-0.7
<b>11.2 Accommodation services</b>	17	120.8	124.6	1.4	0.9	4.2	3.5	3.3	2.8	2.6	3.3	4.5	3.7	3.1
<b>12.1 Personal care</b>	25	117.8	116.4	0.5	0.5	-0.6	-0.3	-0.8	-0.5	-1.8	-0.8	-0.6	-1.1	-1.1
12.1.1 Hairdressing and personal grooming establishments	6	124.7	126.7	0.3	-	1.5	1.3	1.4	1.7	1.7	1.6	1.7	1.8	1.6
12.1.2/3 Appliances and products for personal care	19	115.5	113.1	0.6	0.6	-1.3	-0.9	-1.5	-1.2	-3.0	-1.6	-1.3	-2.0	-2.0
<b>12.3 Personal effects (nec)</b>	12	135.1	134.9	0.5	0.5	0.1	1.0	0.8	-0.1	-0.1	0.2	-0.9	-0.1	-0.1
12.3.1 Jewellery, clocks and watches	8	151.3	150.5	0.1	-0.3	-0.1	-	-	-	0.3	0.4	-0.5	-0.1	-0.5
12.3.2 Other personal effects	4	106.4	107.0	1.3	2.0	0.5	2.8	2.2	-0.4	-0.9	-0.3	-1.9	-	0.6
<b>12.4 Social protection</b>	11	138.4	144.0	0.2	0.2	3.0	3.0	3.3	3.5	3.4	3.4	3.8	4.0	4.1
<b>12.5 Insurance</b>	8	157.7	157.5	0.1	-0.2	1.9	1.5	2.0	2.4	2.3	1.1	-0.2	0.2	-0.1
12.5.2 House contents insurance	2	100.7	100.4	0.7	-0.1	2.9	2.6	1.2	3.6	3.6	-0.1	-1.1	0.6	-0.3
12.5.3 Health insurance	2	180.8	184.4	-	-	4.5	4.5	3.8	3.8	3.8	3.8	2.0	2.0	2.0
12.5.4 Transport insurance	4	192.8	190.7	-0.2	-0.3	-0.8	-1.5	0.8	0.6	0.3	-	-0.9	-1.0	-1.1
<b>12.6 Financial services (nec)</b>	10	96.3	92.2	0.2	-0.4	-4.7	-4.8	-4.6	-4.1	-4.1	-4.1	-3.5	-3.7	-4.3
12.6.2 Other financial services (nec)	10	96.3	92.2	0.2	-0.4	-4.7	-4.8	-4.6	-4.1	-4.1	-4.1	-3.5	-3.7	-4.3
<b>12.7 Other services (nec)</b>	10	132.7	132.7	-0.3	0.3	-	-	-0.2	-0.3	-0.3	-1.1	-0.1	-0.6	-

Key:- zero or negligible .. not available (nec) not elsewhere covered

Source: Office for National Statistics

<sup>1</sup> The National Statistics status of CPIH has been discontinued pending work to investigate and improve the method for measuring owner occupiers' housing costs in this index. The improvements from the resulting development work were introduced as part of the February 2015 dataset with the historical series revised back to 2005.