

Consumer Price Inflation, April 2015



Coverage: UK

Date: 19 May 2015

Geographical Area: UK

Theme: **Economy**

Main points

- The Consumer Prices Index (CPI) fell by 0.1% in the year to April 2015, compared to no change (0.0%) in the year to March 2015.
- This is the first time the CPI has fallen over the year since official records began in 1996 and the first time since 1960 based on comparable historic estimates.
- The largest downward contribution came from transport services - notably air and sea fares, with the timing of Easter this year a likely factor.
- CPIH (not a National Statistic) grew by 0.2% in the year to April 2015, down from 0.3% in March 2015.

A brief description of Consumer Price Inflation

Consumer price inflation is the speed at which the prices of goods and services bought by households rise or fall. Consumer price inflation is estimated by using price indices. A way to understand a price index is to think of a very large shopping basket containing all the goods and services bought by households. The price index estimates changes to the total cost of this basket. Consumer price indices are published monthly.

A [video](#) and an [infographic](#) explain how consumer price inflation is calculated.

A price index can be used to measure inflation in a number of ways. The most common is to look at how the index has changed over a year. This is calculated by comparing the price index for the latest month with the same month a year ago. This is known as the 12-month inflation rate. This bulletin measures inflation to April 2015, so the 12-month rate measures changes in prices between April 2014 and April 2015.

A range of measures of consumer price and other price inflation are published. [A tale of many price indices](#) summarises information on the different measures.

Consumer Prices Index (CPI)

What is the CPI?

The CPI is a measure of consumer price inflation produced to international standards and in line with European regulations. First published in 1997 as the Harmonised Index of Consumer Prices (HICP), the CPI is the inflation measure used in the Government's target for inflation.

The CPI is also used for purposes such as uprating pensions, wages and benefits and can aid in the understanding of inflation on family budgets. For more information see [Users and uses of consumer price inflation statistics \(100.5 Kb Pdf\)](#).

Latest figure and long-term trend

The CPI 12-month rate (the amount prices change over a year) between April 2014 and April 2015 stood at a negative 0.1%. This means that a basket of goods and services that cost £100.00 in April 2014 would have cost £99.90 in April 2015. This is the first time that the CPI 12-month rate has been negative since official records began in 1996.

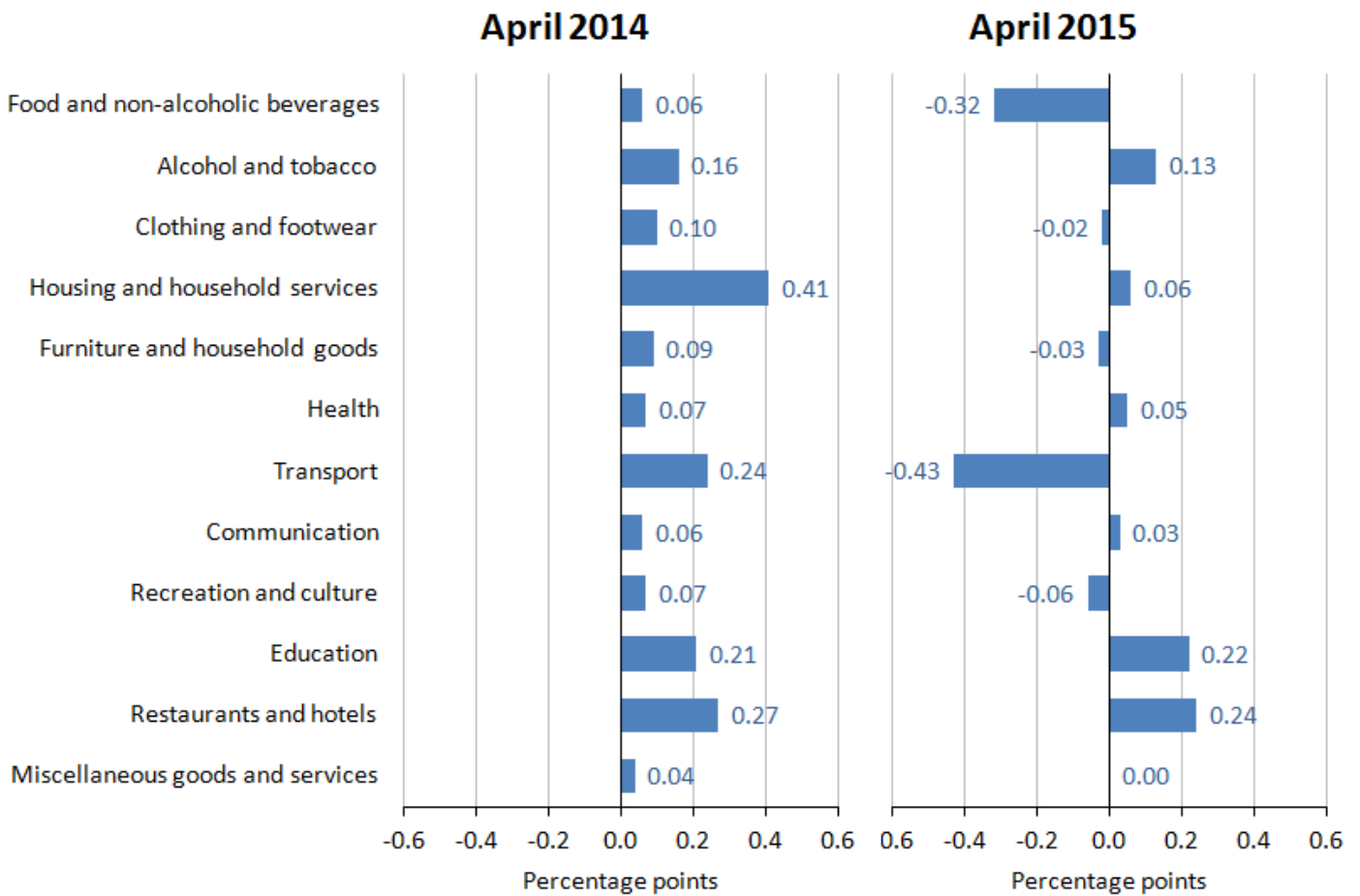
An annual fall in prices is often referred to as "negative inflation" or "deflation". Based on comparable historic estimates, the last time the UK saw consumer price deflation was in the year to March 1960, when prices fell by an estimated 0.6%.

In the year to April 2015, food prices fell by 3.0% and prices of motor fuels fell by 12.3%. In both cases, the falls are smaller than in the year to March 2015 but the 2 groups still provided the largest downward contributions to the 12-month rate for April. In total, the food and motor fuels groups reduced the CPI 12-month rate by approximately 0.7 percentage points. An article was published in November 2014 which outlined some [possible factors that may be affecting prices \(477.2 Kb Pdf\)](#).

Figure A shows the contributions to the CPI 12-month rate in April 2015 compared with the contributions to the 12-month rate a year earlier. A larger version of the chart can be viewed by clicking on it (HTML version only).

Figure A: Contributions to the CPI 12-month rate: April 2014 and April 2015

United Kingdom



Source: Office for National Statistics

Notes:

1. Individual contributions may not sum to the total due to rounding.
2. More information on the contents of each group can be found in Table 3 in the accompanying consumer price inflation reference tables.

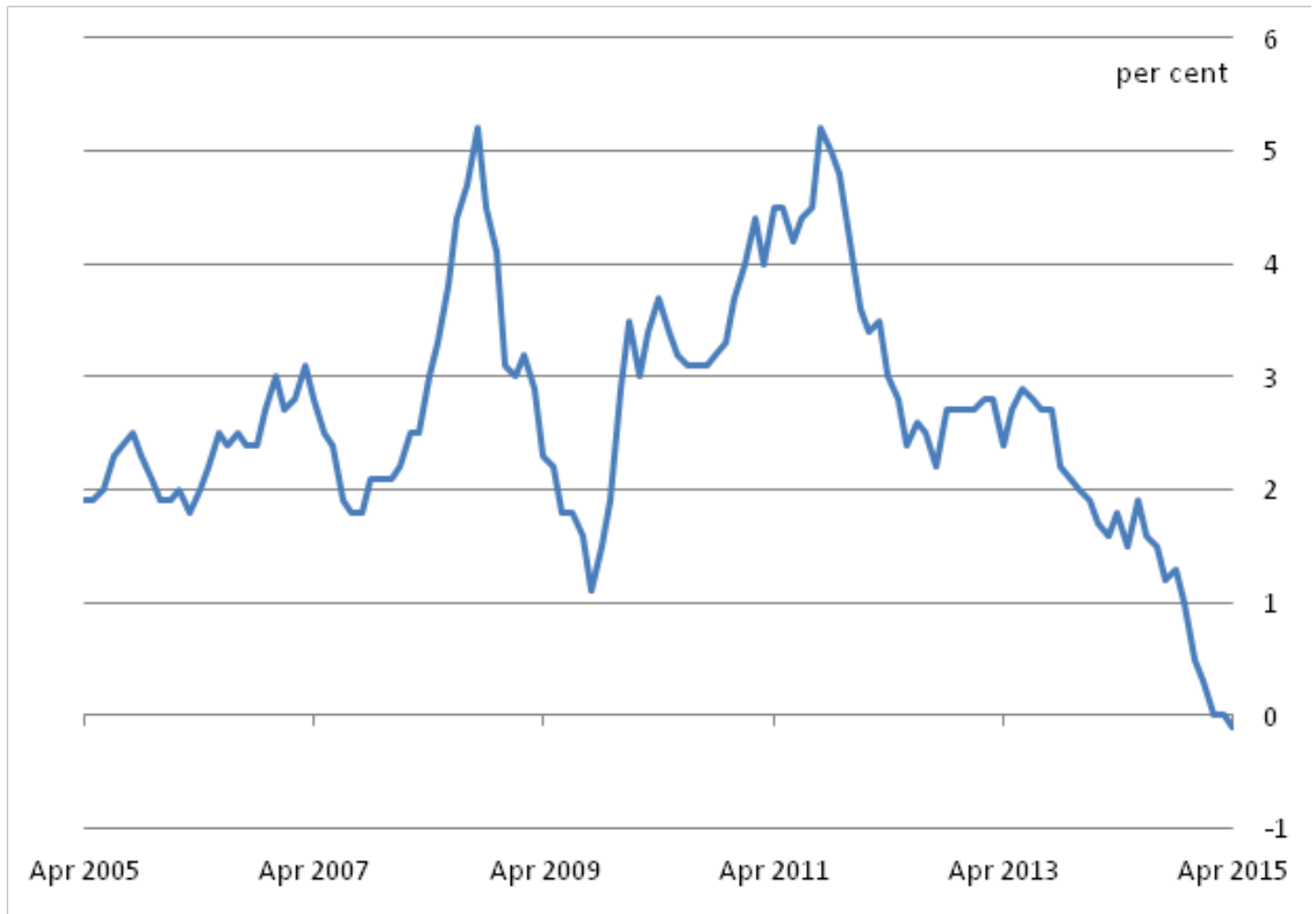
Download chart

[XLS](#) [XLS format](#)
(27 Kb)

Figure B shows the CPI 12-month rate over the last 10 years. Table A shows the CPI 1-month rate (the amount prices change between 2 consecutive months), 12-month rate and index values for the last year. A larger version of the chart can be viewed by clicking on it (HTML version only).

Figure B: CPI 12-month inflation rate for the last 10 years: April 2005 to April 2015

United Kingdom



Source: Office for National Statistics

Download chart

[XLS](#) [XLS format](#)
(35.5 Kb)

Table A: CPI index values, 1-month and 12-month rates: April 2014 to April 2015

United Kingdom

		Index ¹ (UK, 2005 = 100)	1-month rate	12-month rate
2014	Apr	128.1	0.4	1.8
	May	128.0	-0.1	1.5
	Jun	128.3	0.2	1.9
	Jul	127.8	-0.3	1.6
	Aug	128.3	0.4	1.5
	Sep	128.4	0.0	1.2
	Oct	128.5	0.1	1.3
	Nov	128.2	-0.3	1.0
	Dec	128.2	0.0	0.5
	2015	Jan	127.1	-0.9
Feb		127.4	0.3	0.0
Mar		127.6	0.2	0.0
Apr		128.0	0.2	-0.1

Table source: Office for National Statistics**Table notes:**

1. All items Consumer Prices Index.

Download table

XLS [XLS format](#)
(28.5 Kb)

Consumer Prices Index (CPI): What are the main movements?

This section explains which goods and services had the biggest impact on the change to the 12-month rate between March and April 2015 and, where relevant, considers the longer-term inflationary trends for these goods and services.

The change in the CPI 12-month rate can be calculated by comparing the 12-month rates for 2 consecutive months. An alternative, and equally valid, approach is to calculate it by comparing the price change between the latest 2 months and the price change between the same 2 months a year ago. [Explaining the contribution to change in the 12-month rate \(37.1 Kb Pdf\)](#) is a diagram explaining the calculation.

The CPI rose by 0.2% between March and April 2015 compared with a larger rise of 0.4% between the same 2 months a year earlier. The 1-month movement was therefore 0.2 percentage points lower this year compared with a year ago, resulting in a fall in the CPI 12-month rate. The difference between the movements in the annual and monthly rates is due to rounding.

The largest downward contributions to change in the CPI 12-month rate between March and April 2015 came from price movements for:

- **transport services:** prices, overall, rose by 2.4% between March and April 2015, compared with a larger rise of 7.9% a year earlier. The majority of the downward contribution came from air and sea fares. Price changes for these fares between March and April vary notably year on year, with the timing of Easter a likely factor.

There were smaller downward contributions from price movements for: housing and household services; clothing and footwear; furniture, household equipment and routine maintenance; and alcoholic beverages and tobacco.

The largest upward contribution to change in the CPI 12-month rate between March and April 2015 came from price movements for:

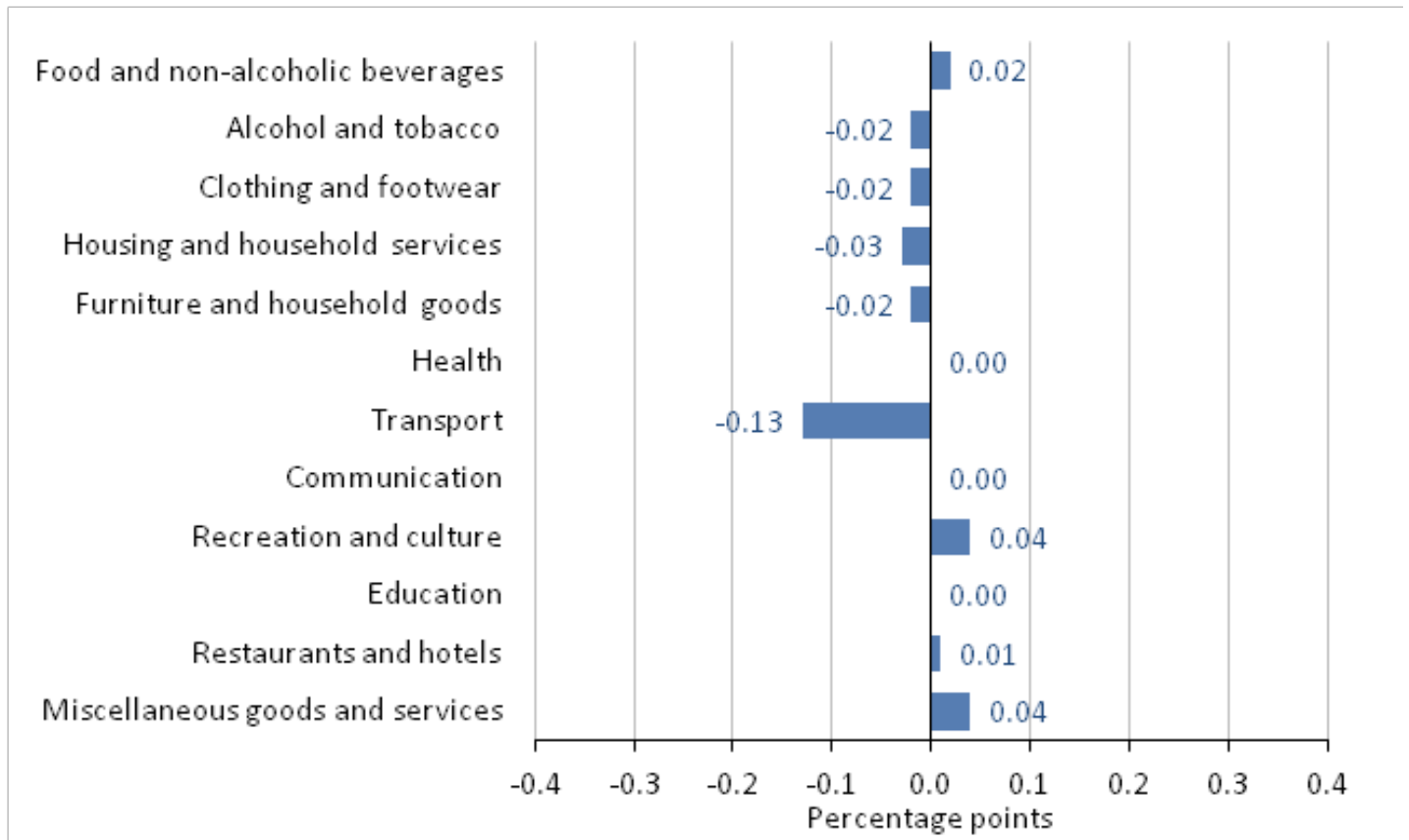
- **motor fuels:** prices, overall, rose by 1.6% between March and April 2015 compared with a fall of 0.1% between the same 2 months a year ago. Average petrol prices rose by 2.0 pence per litre between March and April this year compared with no change between the same 2 months a year ago. Diesel prices also rose this year, by 1.2 pence per litre, but fell by 0.5 pence per litre a year ago.

There were smaller upward contributions from price movements for: recreation and culture; miscellaneous goods and services; and food and non-alcoholic beverages.

Figure C shows the contributions to change from each part of the CPI basket of goods and services. A larger version of the chart can be viewed by clicking on it (HTML version only).

Figure C: Contributions to the change in the CPI 12-month rate: April 2015

United Kingdom



Source: Office for National Statistics

Notes:

1. Individual contributions may not sum to the total due to rounding.
2. More information on the contents of each group can be found in Table 3 in the accompanying consumer price inflation reference tables.

Download chart
[XLS](#) [XLS format](#)

(26.5 Kb)

CPIH

The National Statistics status of CPIH has been discontinued pending work to investigate and improve the method for measuring owner occupiers' housing costs in this index. [Full details](#) can be found on the UK Statistics Authority website and in an [explanatory note \(313.9 Kb Pdf\)](#) on our website. The improvements from the resulting development work were introduced as part of the February 2015 dataset with the historical series revised back to 2005. Further information on the changes is available in 2 articles: [Improvements to the measurement](#)

[of Owner Occupiers' Housing Costs and Private Housing Rental Prices \(2.48 Mb Pdf\)](#) and [Revising the weight of Owner Occupiers' Housing in CPIH \(197.4 Kb Pdf\)](#).

CPIH is a measure of UK consumer price inflation that includes owner occupiers' housing costs (OOH). These are the costs of housing services associated with owning, maintaining and living in one's own home. OOH does not include costs such as utility bills, minor repairs and maintenance, which are already included in the index. CPIH uses an approach called rental equivalence to measure OOH. Rental equivalence uses the rent paid for an equivalent house as a proxy for the costs faced by an owner occupier. In other words this answers the question "how much would I have to pay in rent to live in a home like mine?" for an owner occupier.

OOH does not seek to capture increases in house prices. Although this may be inconsistent with some users' expectations of measures of OOH, the inclusion of an asset price and therefore capital gains would make the index less suitable for a measure of consumption. OOH currently accounts for 17.8% of the expenditure weight of CPIH. This compares with a weight of 19.5% in 2005.

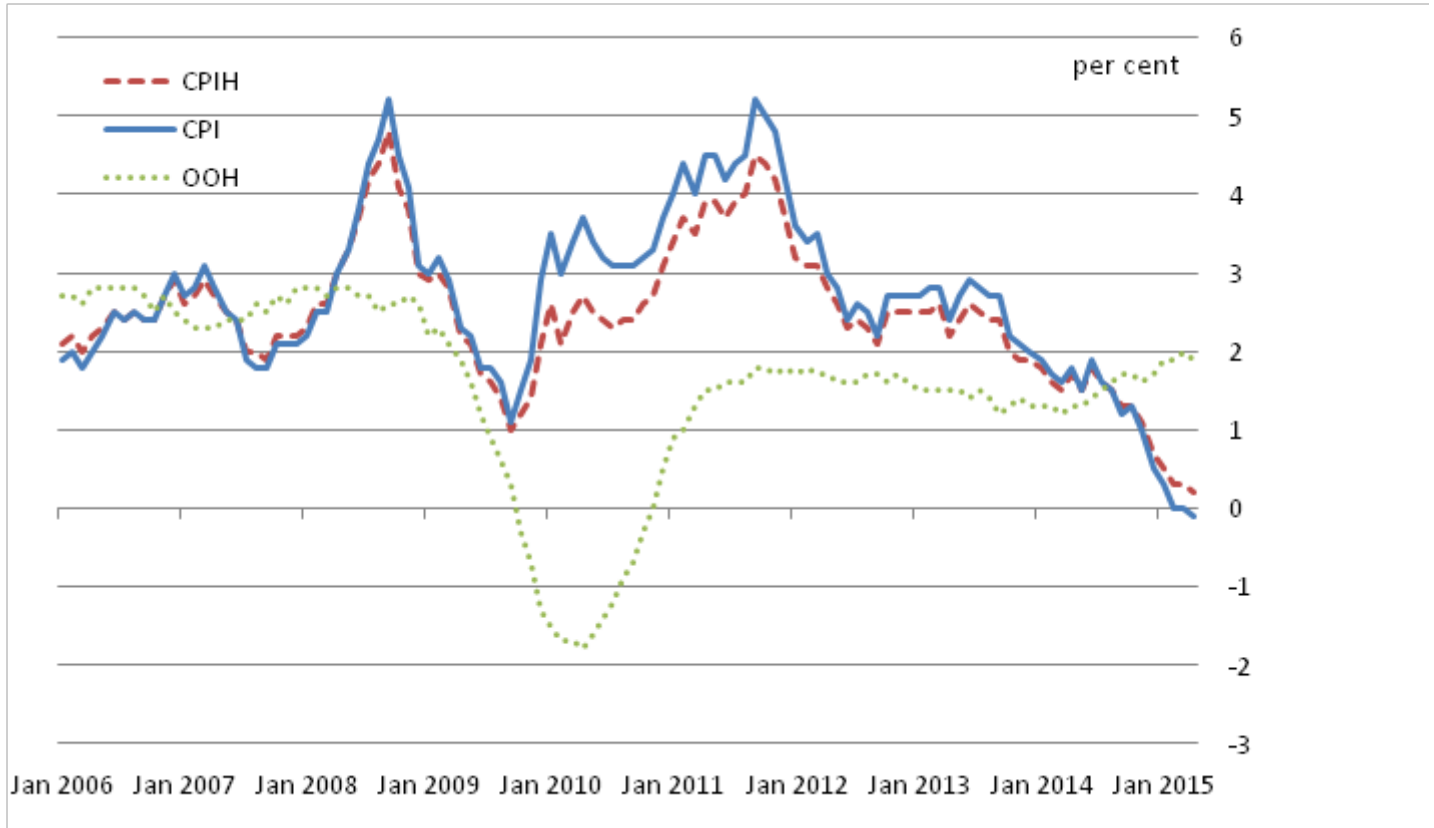
Currently, the method of calculation, the population coverage and the basket of goods and services are the same as the Consumer Prices Index (CPI), with the exception of OOH. The method of deriving the weights for CPIH and the data used for these are also the same as for CPI, with the exception of OOH. This can result in some differences from the CPI.

In April 2015, the 12-month rate (the rate at which prices increased between April 2014 and April 2015) for CPIH stood at 0.2%, down from 0.3% in March 2015. The difference between the CPI and CPIH annual rates in April 2015 was 0.3 percentage points, the same as the difference in March, despite a small downward contribution from owner occupiers' housing costs.

Figure D shows the CPIH and OOH component 12-month rates since January 2006 (the earliest date for which the CPIH 12-month rate can be calculated). The CPI 12-month rate has been included for comparative purposes. Table B shows the CPIH and OOH component 1-month and 12-month rates and index values for the last year. A larger version of the chart can be viewed by clicking on it (HTML version only).

Figure D: CPIH, OOH component and CPI 12-month rates since January 2006

United Kingdom



Source: Office for National Statistics

Notes:

1. The National Statistics status of CPIH has been discontinued pending work to investigate and improve the method for measuring owner occupiers' housing costs in this index. The improvements from the resulting development work were introduced as part of the February 2015 dataset with the historical series revised back to 2005.
2. The time series for this chart will be gradually increased up to a time span of 10 years as more periods of data become available.

Download chart

[XLS](#) [XLS format](#)
(36 Kb)

Table B: CPIH and OOH component index values, 1-month and 12-month rates: April 2014 to April 2015

United Kingdom

		CPIH Index ¹ (UK, 2005 = 100)	OOH Index ¹ (UK, 2005 = 100)	CPIH 1- month ¹ rate	OOH 1- month ¹ rate	CPIH 12- month ¹ rate	OOH 12- month ¹ rate
2014	Apr	125.5	114.1	0.3	0.2	1.7	1.3
	May	125.5	114.3	0.0	0.2	1.5	1.3
	Jun	125.7	114.4	0.2	0.1	1.8	1.4
	Jul	125.4	114.7	-0.2	0.2	1.6	1.5
	Aug	125.9	115.0	0.4	0.2	1.5	1.6
	Sep	125.9	115.1	0.1	0.1	1.3	1.7
	Oct	126.1	115.3	0.1	0.2	1.3	1.7
	Nov	125.8	115.4	-0.2	0.1	1.1	1.6
	Dec	125.9	115.6	0.0	0.2	0.7	1.7
	2015	Jan	125.0	115.9	-0.7	0.2	0.5
Feb		125.3	116.0	0.2	0.1	0.3	1.9
Mar		125.5	116.1	0.2	0.1	0.3	2.0
Apr		125.8	116.3	0.2	0.1	0.2	1.9

Table source: Office for National Statistics**Table notes:**

1. The National Statistics status of CPIH has been discontinued pending work to investigate and improve the method for measuring owner occupiers' housing costs in this index. The improvements from the resulting development work were introduced as part of the February 2015 dataset with the historical series revised back to 2005.

Download table
[XLS](#) [XLS format](#)

(29.5 Kb)

Retail Prices Index (RPI) and RPIJ

In accordance with the Statistics and Registration Service Act 2007, the Retail Prices Index and its derivatives have been assessed against the Code of Practice for Official Statistics and found not to meet the required standard for designation as National Statistics. The [full assessment report](#) can be found on the UK Statistics Authority website.

The RPI is a long-standing measure of UK inflation that has historically been used for a wide range of purposes such as the indexation of pensions, rents and index-linked gilts. For further information see [Users and uses of consumer price inflation statistics \(100.5 Kb Pdf\)](#).

RPIJ is an improved variant of the Retail Prices Index, which is calculated using formulae that meet international standards. The rationale for creating RPIJ was to give users a better alternative to the RPI if their needs were for a measure of inflation based on the same population, classifications, weights, etc as the RPI. Currently, RPIJ also acts as an analytical series in that it allows users to see the impact of using the Jevons (which meets international standards) in place of the Carli formula (which does not meet international standards) in the RPI. The use of the different formulae at the elementary aggregate level is currently the only difference between the 2 indices. Detailed goods and services indices are not produced for RPIJ.

In April 2015, the 12-month rate for RPIJ stood at 0.3%, unchanged from 0.3% in the year to March 2015.

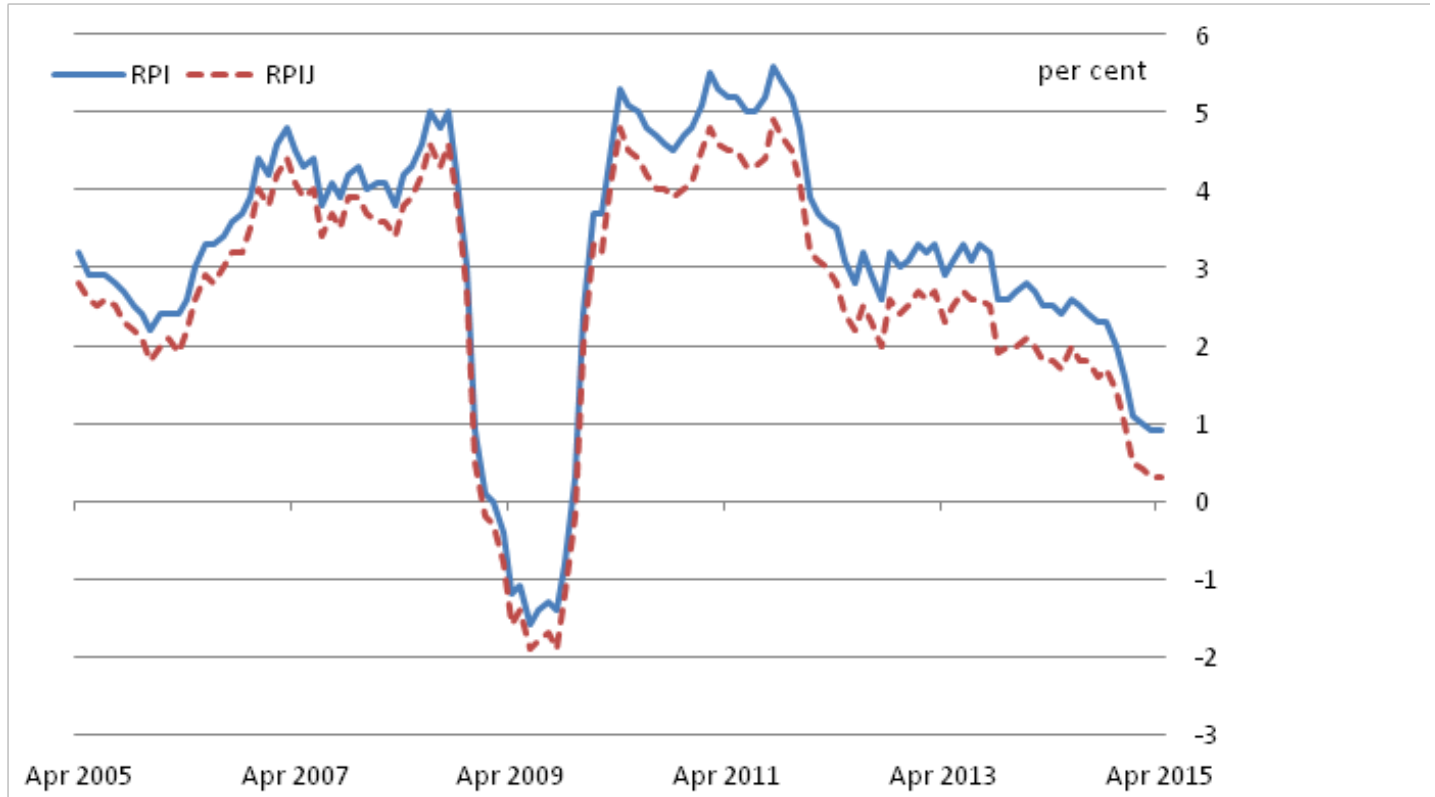
The RPI 12-month rate for April 2015 stood at 0.9%, meaning that it was 0.6 percentage points higher than it would have been had it used formulae that meet international standards.

Figure E shows the RPI and RPIJ 12-month rates for the last 10 years. Over this period, the RPIJ 12-month rate has been, on average, 0.5 percentage points lower than the RPI but the difference has increased to an average of 0.6 percentage points over the last 3 years. Cumulatively, inflation as measured by the RPI is 34.7% over the 10-year period, compared with 27.7% as measured by the RPIJ. The use of the Carli formula has therefore added 7.0 percentage points to the change in prices over the last 10 years. A larger version of the chart can be viewed by clicking on it (HTML version only).

Table C shows the RPI and RPIJ 1-month and 12-month rates and index values for the last year.

Figure E: RPI and RPIJ 12-month rates for the last 10 years: April 2005 to April 2015

United Kingdom



Source: Office for National Statistics

Notes:

1. The RPI has been de-designated as a National Statistic.

Download chart

[XLS](#) [XLS format](#)
(34.5 Kb)

Table C: RPI and RPIJ index values, 1-month and 12-month rates: April 2014 to April 2015

United Kingdom


		RPI Index ¹ (UK, 1987 = 100)	RPIJ Index (UK, 1987 = 100)	RPI 12- month ¹ rate	RPIJ 12- month rate	RPI 1- month ¹ rate	RPIJ 1- month rate
2014	Apr	255.7	237.4	2.5	1.8	0.4	0.3
	May	255.9	237.5	2.4	1.7	0.1	0.0
	Jun	256.3	237.8	2.6	2.0	0.2	0.1
	Jul	256.0	237.5	2.5	1.8	-0.1	-0.1
	Aug	257.0	238.3	2.4	1.8	0.4	0.3
	Sep	257.6	238.8	2.3	1.6	0.2	0.2
	Oct	257.7	238.9	2.3	1.7	0.0	0.0
	Nov	257.1	238.3	2.0	1.4	-0.2	-0.3
	Dec	257.5	238.6	1.6	1.0	0.2	0.1
	2015	Jan	255.4	236.5	1.1	0.5	-0.8
Feb		256.7	237.2	1.0	0.4	0.5	0.3
Mar		257.1	237.4	0.9	0.3	0.2	0.1
Apr		258.0	238.0	0.9	0.3	0.4	0.3

Table source: Office for National Statistics

Table notes:

1. The RPI has been de-designated as a National Statistic.

Download table

 [XLS format](#)
(28 Kb)

For users who want to understand the causes of the difference between the CPI and RPI, please see Table 5 in the [Consumer Price Inflation Reference Tables \(2.49 Mb Excel sheet\)](#) of the April release.

Guide to data

Table D outlines where data for all consumer price inflation statistics can be found.

Table D: Guide to data

	Statistical Bulletin	Detailed Briefing Note	Reference Tables (Excel Format)	Time Series Dataset
CPI	H, T, D ²	H, D	H, T, D	T, D
CPIY	:	H	H, T	T
CPI-CT	:	H	H, T	T
CPIH¹	H, T, D	H	H, T, D	T, D
CPIHY¹	:	H	H, T	T
RPIJ	H, T	H	H, T	T
RPI¹	H, T	H, D	H, T, D	T, D
RPIX¹	:	H	H, T	T
RPIY¹	:	H	H, T	T
TPI¹	:	H	H, T	T
RPI Pensioner Indices¹	:	:	H, T	T
International Comparisons	:	:	H, T	T

Table source: Office for National Statistics

Table notes:

1. These statistics are not National Statistics.
2. H = Latest headline figures, D = Detailed data (including disaggregations), T = Time series data.

Download table

 [XLS format](#)

(26.5 Kb)

Background notes

1. News

On 8 June 2015, we are planning to publish trial consumer price indices constructed purely from price quotes that have been scraped from the web. Web scraping is a tool for extracting information from the underlying HTML code of websites. We have been conducting research into these technologies and, since May 2014, have been scraping daily prices from the websites of 3 major retailers. The indices will cover 35 grocery and alcohol items, and will be presented at daily, weekly, fortnightly and monthly frequencies. The indices will be accompanied by an explanatory methodological note and a brief overview of the project.

2. Understanding and accessing the data

A full description of how consumer price indices are compiled is given in the [Consumer Price Indices Technical Manual \(674.4 Kb Pdf\)](#). This is supplemented by video, infographics and textual information available from the [guidance and methodology section](#) of our website.

A more detailed [quality report \(141.9 Kb Pdf\)](#) for this statistical bulletin is available on our website. The report assesses consumer price inflation statistics against standard dimensions of quality such as relevance, accuracy and accessibility. The report was last updated in October 2013.

The [mini Triennial Review \(1.75 Mb Pdf\)](#) of the CPI and RPI Central Collection of Prices is available on our website.

The most efficient way to access the latest consumer price inflation data and briefing on our website is via the CPI key figure on the [homepage](#).

In response to user feedback, all consumer price inflation data are available in 1 location. The [Consumer Price Inflation Reference Tables \(2.49 Mb Excel sheet\)](#) are provided via an Excel file.

To help users further, very detailed CPI data are now available on our website including the [individual price quotes and item indices](#) that underpin the CPI. Please note, the data that are published are at a level which means that no individual retailer or service provider will be able to be identified. The data published covers January 1996 to December 2014. These data are updated once a quarter with around a 2-month lag with the latest CPI publication. For example, the data will next be updated when the May CPI is published on 16 June 2015, at which point the detailed data published will be extended to March 2015.

Internationally, the CPI is known as the Harmonised Index of Consumer Prices (HICP). HICPs are calculated in each Member State of the European Union according to rules specified in a series of European regulations developed by the European Commission (Eurostat) in conjunction with the EU member states. Eurostat releases figures for the Harmonised Index of Consumer Prices (HICP) for the month of April 2015 for EU member states, together with an EU average, on 19 May 2015. A summary of the latest European data is available from [Eurostat's database tables](#). Further information on HICP for the European Union, Euro area and other EU member states is available from [Eurostat's HICP web page](#).

3. Methods - CPI and other measures of inflation

The CPI, CPIH, RPIJ and RPI are compiled using the same underlying price data, based on a large and representative selection of around 700 individual goods and services for which price movements are measured in around 140 randomly selected areas throughout the UK. Around 180,000 separate price quotations are used every month to compile the indices. The outlets in which the prices are collected are selected randomly. Expenditure weights are held constant for 1 year at a time.

The selection of goods and services that are priced to compile these indices is reviewed annually. The contents of the 2015 basket are described in an article [Consumer Price](#)

[Inflation: The 2015 Basket of Goods and Services \(139.4 Kb Pdf\)](#). The expenditure weights used to compile the indices are also updated each year. Additional details of the updated weights for 2015 are available in an article published on 24 March 2015 entitled [Consumer Price Inflation: 2015 Weights \(431.9 Kb Pdf\)](#).

Rates of change for the CPI and CPIH are calculated from unrounded index levels, rather than from the published indices, which are rounded to 1 decimal place. The use of unrounded indices increases the accuracy of the calculation. The unrounded index levels for the CPI and CPIH are available from tables 64 and 65 of the [Consumer Price Inflation Reference Tables \(2.49 Mb Excel sheet\)](#). By contrast, rates of change for the RPI and RPIJ are calculated from the published rounded indices.

Further information on the methods used to construct the CPI, CPIH, RPI and RPIJ, including differences in the methods used for each index can be found in the [Consumer Price Indices Technical Manual \(674.4 Kb Pdf\)](#). [Users and uses of consumer price inflation statistics \(100.5 Kb Pdf\)](#) provides further details of how consumer price statistics are used more generally.

4. Revisions policy

On 15 October 2013, a [revisions policy \(49.6 Kb Pdf\)](#) was published for the suite of consumer price inflation statistics. The policy reaffirms the existing practices for CPI and RPI and sets out the policies for the new CPIH and RPIJ measures.

In summary, CPI, CPIH and RPIJ are revisable in theory though revisions only occur under exceptional circumstances. The RPI is never revised once published.

5. Publication policy

This bulletin includes the April 2015 data, collected on and around 14 April 2015. Future [publication dates](#) for this statistical bulletin are available to January 2017 (the publication of the December 2016 inflation figures). Publication dates from February 2016 onwards are provisional.

Details of the policy governing the release of new data are available from our Media Relations Office. Also available is a list of the names of those given [pre-release access](#) to the contents of this release.

Consumer Price Inflation for May 2014 to May 2015 will be published on 16 June 2015.

Follow us on [Twitter](#) or join us at [Facebook](#). View the latest podcasts on [YouTube](#).

Media contact:

Tel: Luke Croydon +44 (0) 845 6041858

Out of hours media line: +44 (0) 7867 906553

Email: media.relations@ons.gsi.gov.uk

Statistical contact:

Tel: Richard Campbell +44 (0) 1633 651536

Email: richard.campbell@ons.gsi.gov.uk

Email: cpi@ons.gsi.gov.uk

Consumer Price Inflation recorded message (available after 9.45am on release day):

Tel: +44 (0) 800 0113703

Consumer Price Inflation Enquiries:

Tel: +44 (0) 1633 456900

6. Details of the policy governing the release of new data are available by visiting www.statisticsauthority.gov.uk/assessment/code-of-practice/index.html or from the Media Relations Office email: media.relations@ons.gsi.gov.uk

These National Statistics are produced to high professional standards and released according to the arrangements approved by the UK Statistics Authority.

Copyright

© Crown copyright 2015

You may use or re-use this information (not including logos) free of charge in any format or medium, under the terms of the Open Government Licence. To view this licence, visit www.nationalarchives.gov.uk/doc/open-government-licence/ or write to the Information Policy Team, The National Archives, Kew, London TW9 4DU, or email: psi@nationalarchives.gsi.gov.uk.

This document is also available on our website at www.ons.gov.uk.

Statistical contacts

Name	Phone	Department	Email
Richard Campbell	+44 (0)1633 651536	Prices, ONS	cpi@ons.gsi.gov.uk

Issuing Body:

Office for National Statistics

Media Contact Details:

Telephone: 0845 604 1858
(8.30am-5.30pm Weekdays)

Emergency out of hours (limited service): 07867 906553

Email:

media.relations@ons.gsi.gov.uk

1 CPI: Detailed figures by division¹

COICOP Division	Food and non-alcoholic beverages	Alcoholic beverages and tobacco	Clothing and footwear	Housing, water, electricity, gas & other fuels	Furniture, household equipment & routine maintenance	Health ²	Transport	Communication	Recreation and culture	Education ²	Restaurants and hotels	Miscellaneous goods and services ²	CPI (overall index)
	01	02	03	04	05	06	07	08	09	10	11	12	
Weights													
	CHZR	CHZS	CHZT	CHZU	CHZV	CHZW	CHZX	CHZY	CHZZ	CJUJ	CJUV	CJUW	CHZQ
2015	110	43	70	128	59	25	149	31	147	26	121	91	1 000
Monthly indices (2005=100)													
	D7BU	D7BV	D7BW	D7BX	D7BY	D7BZ	D7C2	D7C3	D7C4	D7C5	D7C6	D7C7	D7BT
2013 Apr	143.9	148.9	82.0	150.1	118.3	126.1	135.6	111.0	102.0	201.5	128.7	120.2	125.9
May	143.9	149.6	83.0	149.8	119.6	126.1	136.2	111.4	101.7	201.5	129.1	120.1	126.1
Jun	143.2	149.1	81.4	149.9	119.0	126.0	136.3	111.5	101.6	201.5	129.3	120.3	125.9
Jul	143.5	150.1	78.8	150.5	117.8	126.9	137.5	111.8	101.1	201.5	129.5	120.4	125.8
Aug	144.2	150.0	80.4	150.5	119.9	127.1	138.9	111.6	101.1	201.5	129.5	120.5	126.4
Sep	144.4	150.7	83.7	150.7	120.1	127.4	137.0	111.7	101.7	205.4	130.1	120.9	126.8
Oct	144.6	151.1	84.6	150.6	119.7	127.2	134.9	112.0	101.9	222.2	130.3	120.7	126.9
Nov	144.6	151.0	85.2	150.6	119.6	127.1	134.2	111.8	102.3	222.2	130.5	121.0	127.0
Dec	145.1	149.2	84.4	154.0	121.6	127.2	135.6	112.2	101.9	222.2	130.5	120.7	127.5
2014 Jan	145.4	153.8	79.9	153.8	117.9	128.0	134.7	112.8	101.4	222.2	130.3	120.4	126.7
Feb	146.1	152.4	80.8	153.9	120.8	128.6	135.1	113.0	102.2	222.2	130.8	120.7	127.4
Mar	145.4	152.8	82.2	153.7	121.1	128.8	135.1	113.3	102.6	222.2	131.4	121.1	127.7
Apr	144.7	154.1	83.0	154.6	120.1	129.8	137.7	113.2	102.5	222.2	131.6	120.6	128.1
May	143.0	156.4	83.0	154.7	120.7	129.9	136.8	112.6	102.9	222.2	132.1	120.4	128.0
Jun	143.2	156.5	83.4	154.7	120.9	130.0	137.6	112.5	102.9	222.2	132.6	120.3	128.3
Jul	143.0	155.4	78.7	155.2	119.2	130.2	139.3	112.6	102.7	222.2	133.1	119.8	127.8
Aug	142.6	156.9	80.7	155.3	120.3	130.8	140.5	112.5	102.6	222.2	132.9	120.0	128.3
Sep	142.4	158.0	83.9	155.4	121.0	130.5	137.1	112.7	102.5	226.5	133.1	120.4	128.4
Oct	142.5	159.0	84.4	155.5	119.7	130.0	135.6	112.7	102.9	244.3	133.6	120.2	128.5
Nov	142.2	157.0	85.0	155.6	119.9	129.7	133.9	112.4	102.7	244.3	133.5	120.1	128.2
Dec	142.6	156.7	84.1	155.5	121.8	129.9	133.7	113.1	102.5	244.3	133.5	120.0	128.2
2015 Jan	141.7	158.9	81.0	155.3	118.8	130.8	131.0	113.1	101.5	244.3	133.3	119.9	127.1
Feb	141.3	158.2	82.1	155.3	120.4	131.0	131.5	114.0	101.4	244.3	133.6	120.2	127.4
Mar	141.1	158.0	82.1	154.7	120.9	131.5	132.5	114.3	101.9	244.3	134.0	120.5	127.6
Apr	140.6	158.7	82.7	155.3	119.4	132.4	133.9	114.3	102.1	244.3	134.3	120.5	128.0
Percentage change on a year earlier													
	D7G8	D7G9	D7GA	D7GB	D7GC	D7GD	D7GE	D7GF	D7GG	D7GH	D7GI	D7GJ	D7GT
2013 Apr	4.6	5.7	-0.6	4.2	0.1	2.5	-0.1	3.2	1.4	19.7	2.5	1.1	2.4
May	4.3	6.2	0.7	4.2	0.6	2.4	1.1	2.7	1.6	19.7	2.5	1.0	2.7
Jun	3.8	6.4	3.1	4.4	-	2.0	1.7	2.9	1.3	19.7	2.5	1.5	2.9
Jul	3.9	6.3	2.5	4.3	0.1	2.7	1.5	2.8	0.7	19.7	2.5	1.5	2.8
Aug	4.1	6.0	1.6	4.2	1.1	2.9	1.2	2.5	0.9	19.7	2.4	1.2	2.7
Sep	4.3	5.4	1.1	4.2	0.7	2.9	1.1	2.6	0.9	21.4	2.6	0.9	2.7
Oct	3.9	5.4	1.0	4.1	1.0	2.6	-0.3	2.7	0.7	10.3	2.8	0.7	2.2
Nov	2.8	5.8	1.1	3.4	1.0	2.5	0.2	2.8	1.1	10.3	2.3	0.5	2.1
Dec	1.9	5.8	1.6	3.7	1.4	2.5	0.5	3.3	0.8	10.3	2.3	0.3	2.0
2014 Jan	2.0	4.5	1.7	3.6	0.6	2.9	0.5	2.8	0.4	10.3	2.2	0.7	1.9
Feb	1.8	4.1	0.8	3.2	1.6	3.4	-0.4	2.0	0.7	10.3	2.3	0.8	1.7
Mar	1.7	5.0	0.2	3.1	1.1	3.4	-1.0	2.3	0.6	10.3	2.6	0.9	1.6
Apr	0.5	3.5	1.2	3.0	1.5	2.9	1.6	1.9	0.5	10.3	2.3	0.3	1.8
May	-0.6	4.6	-0.1	3.2	0.9	3.1	0.4	1.0	1.1	10.3	2.3	0.3	1.5
Jun	-	5.0	2.4	3.2	1.6	3.1	0.9	0.9	1.3	10.3	2.6	-	1.9
Jul	-0.4	3.6	-0.2	3.2	1.1	2.6	1.3	0.7	1.5	10.3	2.8	-0.6	1.6
Aug	-1.1	4.6	0.4	3.2	0.4	2.9	1.2	0.8	1.4	10.3	2.6	-0.4	1.5
Sep	-1.4	4.9	0.2	3.1	0.8	2.5	0.1	0.9	0.7	10.3	2.3	-0.5	1.2
Oct	-1.4	5.2	-0.2	3.2	0.1	2.2	0.5	0.6	1.0	10.0	2.5	-0.3	1.3
Nov	-1.7	4.0	-0.2	3.3	0.3	2.0	-0.2	0.5	0.3	10.0	2.4	-0.8	1.0
Dec	-1.7	5.0	-0.3	1.0	0.2	2.1	-1.4	0.7	0.6	10.0	2.3	-0.6	0.5
2015 Jan	-2.5	3.3	1.4	1.0	0.8	2.2	-2.8	0.2	0.1	10.0	2.4	-0.4	0.3
Feb	-3.3	3.8	1.7	0.9	-0.3	1.8	-2.7	0.9	-0.8	10.0	2.2	-0.4	-
Mar	-3.0	3.4	-0.2	0.7	-0.2	2.1	-1.9	0.9	-0.7	10.0	2.0	-0.5	-
Apr	-2.8	3.0	-0.4	0.5	-0.5	2.0	-2.8	1.0	-0.4	10.0	2.0	-0.1	-0.1

Key: - zero or negligible

Source: Office for National Statistics

¹ More detailed CPI data are available at <http://www.ons.gov.uk>

² The coverage of these categories was extended in January 2000; further extensions to coverage came into effect in January 2001 for health and miscellaneous goods and services; the coverage of miscellaneous goods and services was further extended with effect from January 2002.

2 CPI, CPIH, RPI and RPIJ Indices: the latest three years¹

	CPI		CPIH (NOT NATIONAL STATISTICS ²)		RPI (NOT NATIONAL STATISTICS ³)		RPIJ	
	Index (2005=100)	Percentage change over 12 months	Index (2005=100)	Percentage change over 12 months	Index (Jan 13, 1987=100)	Percentage change over 12 months	Index (1987=100)	Percentage change over 12 months
	D7BT	D7G7	L522	L55O	CHAW	CZBH	KVR8	KVR9
2012 Apr	122.9	3.0	120.8	2.8	242.5	3.5	227.9	2.8
May	122.8	2.8	120.7	2.6	242.4	3.1	227.8	2.4
Jun	122.3	2.4	120.3	2.3	241.8	2.8	227.1	2.2
Jul	122.5	2.6	120.4	2.4	242.1	3.2	227.4	2.5
Aug	123.1	2.5	121.0	2.3	243.0	2.9	228.2	2.3
Sep	123.5	2.2	121.4	2.1	244.2	2.6	229.2	2.0
Oct	124.2	2.7	122.0	2.5	245.6	3.2	230.5	2.6
Nov	124.4	2.7	122.1	2.5	245.6	3.0	230.5	2.4
Dec	125.0	2.7	122.6	2.5	246.8	3.1	231.5	2.5
2013 Jan	124.4	2.7	122.1	2.5	245.8	3.3	230.6	2.7
Feb	125.2	2.8	122.8	2.5	247.6	3.2	231.7	2.6
Mar	125.6	2.8	123.2	2.6	248.7	3.3	232.6	2.7
Apr	125.9	2.4	123.4	2.2	249.5	2.9	233.2	2.3
May	126.1	2.7	123.7	2.4	250.0	3.1	233.5	2.5
Jun	125.9	2.9	123.5	2.6	249.7	3.3	233.2	2.7
Jul	125.8	2.8	123.5	2.5	249.7	3.1	233.2	2.6
Aug	126.4	2.7	123.9	2.4	251.0	3.3	234.2	2.6
Sep	126.8	2.7	124.3	2.4	251.9	3.2	235.0	2.5
Oct	126.9	2.2	124.4	2.0	251.9	2.6	234.9	1.9
Nov	127.0	2.1	124.5	1.9	252.1	2.6	235.1	2.0
Dec	127.5	2.0	125.0	1.9	253.4	2.7	236.2	2.0
2014 Jan	126.7	1.9	124.3	1.8	252.6	2.8	235.4	2.1
Feb	127.4	1.7	124.9	1.6	254.2	2.7	236.3	2.0
Mar	127.7	1.6	125.1	1.5	254.8	2.5	236.7	1.8
Apr	128.1	1.8	125.5	1.7	255.7	2.5	237.4	1.8
May	128.0	1.5	125.5	1.5	255.9	2.4	237.5	1.7
Jun	128.3	1.9	125.7	1.8	256.3	2.6	237.8	2.0
Jul	127.8	1.6	125.4	1.6	256.0	2.5	237.5	1.8
Aug	128.3	1.5	125.9	1.5	257.0	2.4	238.3	1.8
Sep	128.4	1.2	125.9	1.3	257.6	2.3	238.8	1.6
Oct	128.5	1.3	126.1	1.3	257.7	2.3	238.9	1.7
Nov	128.2	1.0	125.8	1.1	257.1	2.0	238.3	1.4
Dec	128.2	0.5	125.9	0.7	257.5	1.6	238.6	1.0
2015 Jan	127.1	0.3	125.0	0.5	255.4	1.1	236.5	0.5
Feb	127.4	-	125.3	0.3	256.7	1.0	237.2	0.4
Mar	127.6	-	125.5	0.3	257.1	0.9	237.4	0.3
Apr	128.0	-0.1	125.8	0.2	258.0	0.9	238.0	0.3

Key: - zero or negligible

Source: Office for National Statistics

1 More detailed CPI, CPIH, RPI and RPIJ data are available at: <http://www.ons.gov.uk>

2 The National Statistics status of CPIH has been discontinued pending work to investigate and improve the method for measuring owner occupiers' housing costs in this index. The improvements from the resulting development work were introduced as part of the February 2015 dataset with the historical series revised back to 2005.

3 In accordance with the Statistics and Registration Service Act 2007, the Retail Prices Index and its derivatives have been assessed against the code of Practice for Official Statistics and found not to meet the required standards for designation as National Statistics. A full report can be found at: <http://www.statisticsauthority.gov.uk/>

3 CPI: Detailed figures by divisions, groups and classes

	Weights Index (2005=100)			Percentage change over 1 month					Percentage change over 12 months						
	2015	2014	2015	2014	2015	2014	2014	2014	2014	2014	2015	2015	2015	2015	
		Apr	Apr	Apr	Apr	Apr	Aug	Sep	Oct	Nov	Dec	Jan	Feb	Mar	Apr
CPI (Overall Index)	1 000	128.1	128.0	0.4	0.2	1.5	1.2	1.3	1.0	0.5	0.3	-	-	-0.1	
01 Food and non-alcoholic beverages	110	144.7	140.6	-0.5	-0.4	-1.1	-1.4	-1.4	-1.7	-1.7	-2.5	-3.3	-3.0	-2.8	
02 Alcoholic beverages and tobacco	43	154.1	158.7	0.9	0.5	4.6	4.9	5.2	4.0	5.0	3.3	3.8	3.4	3.0	
03 Clothing and footwear	70	83.0	82.7	1.0	0.7	0.4	0.2	-0.2	-0.2	-0.3	1.4	1.7	-0.2	-0.4	
04 Housing, water, electricity, gas and other fuels	128	154.6	155.3	0.6	0.4	3.2	3.1	3.2	3.3	1.0	1.0	0.9	0.7	0.5	
05 Furniture, household equipment and maintenance	59	120.1	119.4	-0.9	-1.2	0.4	0.8	0.1	0.3	0.2	0.8	-0.3	-0.2	-0.5	
06 Health	25	129.8	132.4	0.8	0.7	2.9	2.5	2.2	2.0	2.1	2.2	1.8	2.1	2.0	
07 Transport	149	137.7	133.9	2.0	1.1	1.2	0.1	0.5	-0.2	-1.4	-2.8	-2.7	-1.9	-2.8	
08 Communication	31	113.2	114.3	-0.1	-	0.8	0.9	0.6	0.5	0.7	0.2	0.9	0.9	1.0	
09 Recreation and culture	147	102.5	102.1	-0.1	0.2	1.4	0.7	1.0	0.3	0.6	0.1	-0.8	-0.7	-0.4	
10 Education	26	222.2	244.3	-	-	10.3	10.3	10.0	10.0	10.0	10.0	10.0	10.0	10.0	
11 Restaurants and hotels	121	131.6	134.3	0.2	0.3	2.6	2.3	2.5	2.4	2.3	2.4	2.2	2.0	2.0	
12 Miscellaneous goods and services	91	120.6	120.5	-0.4	-	-0.4	-0.5	-0.3	-0.8	-0.6	-0.4	-0.4	-0.5	-0.1	
All goods	532	122.0	119.7	-0.2	-0.1	0.6	0.2	0.3	-0.2	-1.0	-1.5	-2.0	-2.1	-2.0	
All services	468	135.7	138.5	1.0	0.6	2.7	2.4	2.5	2.4	2.3	2.4	2.4	2.4	2.0	
All items CPI excluding Energy, food, alcoholic beverages and tobacco	771	120.2	121.1	0.5	0.3	1.9	1.5	1.5	1.2	1.3	1.4	1.2	1.0	0.8	
01.1 Food	97	145.1	140.7	-0.6	-0.4	-1.2	-1.5	-1.6	-1.7	-1.9	-2.8	-3.4	-3.2	-3.0	
01.1.1 Bread and cereals	16	143.9	138.5	-0.1	-0.9	-1.6	-2.7	-0.9	-2.2	-2.5	-2.3	-3.1	-3.0	-3.7	
01.1.2 Meat	22	142.3	138.3	-0.2	-	0.1	-0.1	-1.5	-2.0	-1.8	-1.7	-2.4	-3.0	-2.8	
01.1.3 Fish	4	158.0	155.0	-3.4	-3.0	1.9	0.3	-0.4	-	0.2	1.1	-1.3	-2.2	-1.9	
01.1.4 Milk, cheese and eggs	14	136.7	132.1	-0.9	-0.6	-1.7	-0.5	-0.1	-0.2	-1.4	-3.5	-5.7	-3.6	-3.3	
01.1.5 Oils and fats	2	166.7	153.7	-0.7	-0.9	-4.6	-1.5	-1.5	-4.1	-2.4	-3.3	-2.7	-7.6	-7.8	
01.1.6 Fruit	10	143.3	142.0	-0.2	-	-0.6	-2.4	1.3	2.6	2.5	-0.1	0.7	-1.0	-0.9	
01.1.7 Vegetables including potatoes and tubers	14	144.3	137.9	-2.3	-0.6	-5.6	-6.9	-7.0	-6.6	-7.1	-7.9	-7.6	-6.1	-4.4	
01.1.8 Sugar, jam, syrups, chocolate and confectionery	12	156.1	154.5	1.2	0.5	1.6	2.8	-0.1	0.8	0.9	-0.5	-1.8	-0.3	-1.0	
01.1.9 Food products (nec)	3	131.4	124.7	-	0.6	-	-0.6	-2.6	-4.5	-3.1	-7.3	-5.5	-5.8	-5.1	
01.2 Non-alcoholic beverages	13	142.6	140.0	0.1	-0.2	-0.1	-	-0.5	-1.4	-0.7	-2.8	-2.3	-1.6	-1.8	
01.2.1 Coffee, tea and cocoa	3	150.2	148.2	-0.5	1.4	-1.1	-1.5	-2.5	-3.5	1.6	-2.9	-0.7	-3.1	-1.3	
01.2.2 Mineral waters, soft drinks and juices	10	140.0	137.2	0.2	-0.6	0.1	0.4	0.1	-0.8	-1.3	-0.2	-2.7	-1.1	-2.0	
02.1 Alcoholic beverages	19	126.0	124.0	-1.4	-1.0	0.2	0.6	0.8	-1.0	1.3	-1.9	-1.2	-2.0	-1.6	
02.1.1 Spirits	5	132.5	131.7	-2.5	-2.5	-0.4	-0.6	1.6	-3.1	-0.5	-2.0	3.0	-0.6	-0.6	
02.1.2 Wine	9	128.1	126.9	-1.6	-	1.4	1.4	1.2	-0.1	3.5	1.0	-1.7	-2.5	-0.9	
02.1.3 Beer	5	113.2	109.0	0.4	-1.1	-1.3	0.5	-0.7	0.1	-0.5	-6.8	-4.7	-2.3	-3.7	
02.2 Tobacco	24	177.6	188.9	2.6	1.6	8.0	8.1	8.5	7.6	7.7	7.3	7.6	7.5	6.4	
03.1 Clothing	60	82.7	82.4	0.8	0.9	0.4	0.2	-0.3	-0.1	-0.4	1.6	1.7	-0.5	-0.3	
03.1.2 Garments	54	81.0	80.5	0.6	0.8	0.6	0.4	-0.3	-0.1	-0.3	1.5	1.8	-0.7	-0.6	
03.1.3 Other clothing and clothing accessories	5	100.1	101.5	1.9	2.0	-1.8	-1.1	-0.7	-0.8	-2.2	2.5	0.9	1.3	1.4	
03.1.4 Cleaning, repair and hire of clothing	1	129.0	132.2	0.2	0.3	2.8	2.6	2.6	2.7	2.4	2.3	2.3	2.4	2.5	
03.2 Footwear including repairs	10	84.6	83.7	2.3	-0.3	0.3	0.1	0.2	-0.7	0.1	0.3	1.3	1.5	-1.1	
04.1 Actual rentals for housing	72	125.6	129.0	1.0	0.8	2.3	2.4	2.7	2.7	2.7	2.7	2.8	2.9	2.7	
04.3 Regular maintenance and repair of the dwelling	2	130.2	130.7	-0.7	-0.1	0.2	-0.3	-0.5	-	0.1	-0.8	-0.3	-0.2	0.3	
04.3.1 Materials for maintenance and repair	1	139.2	139.4	-1.4	-0.3	-	-0.8	-1.0	-	0.1	-1.8	-0.9	-0.9	0.2	
04.3.2 Services for maintenance and repair	1	118.1	118.6	-	0.1	0.4	0.3	-	-	0.1	0.1	0.3	0.4	0.4	
04.4 Water supply and misc. services for the dwelling	12	152.0	150.9	2.4	-0.7	2.4	2.4	2.4	2.4	2.4	2.4	2.4	2.4	-0.7	
04.4.1 Water supply	6	150.3	147.8	1.6	-1.7	1.6	1.6	1.6	1.6	1.6	1.6	1.6	1.6	-1.7	
04.4.3 Sewerage collection	6	154.1	154.6	3.2	0.3	3.2	3.2	3.2	3.2	3.2	3.2	3.2	3.2	0.3	
04.5 Electricity, gas and other fuels	42	218.8	212.6	-0.6	-0.1	4.7	4.5	4.5	4.5	-2.1	-2.0	-2.4	-3.3	-2.8	
04.5.1 Electricity	20	198.6	198.2	-0.6	-0.2	5.6	5.6	5.6	5.6	-0.8	-0.7	-0.9	-0.6	-0.2	
04.5.2 Gas	20	249.4	239.9	-0.5	-0.1	5.1	5.1	5.1	5.1	-1.6	-1.0	-1.9	-4.2	-3.8	
04.5.3 Liquid fuels	1	185.0	136.8	-1.6	0.2	-8.9	-12.2	-13.9	-13.3	-22.6	-30.8	-27.3	-27.4	-26.0	
04.5.4 Solid fuels	1	183.2	185.7	0.2	0.1	2.2	2.3	3.0	2.1	1.9	1.1	1.2	1.4	1.3	
05.1 Furniture, furnishings and carpets	21	120.4	118.8	-2.0	-2.4	-0.2	0.4	-0.2	-	0.7	0.7	-1.5	-0.9	-1.3	
05.1.1 Furniture and furnishings	15	118.5	118.2	-2.5	-2.2	-0.8	0.8	-1.0	-1.2	-0.3	0.2	-2.1	-0.5	-0.2	
05.1.2 Carpets and other floor coverings	6	125.1	120.1	-0.5	-3.2	1.3	-1.9	1.5	3.3	3.6	1.5	0.5	-1.4	-4.0	
05.2 Household textiles	6	98.2	96.9	-1.9	-1.1	-2.6	-1.6	-1.8	-1.8	-2.4	-1.2	-1.7	-2.2	-1.4	
05.3 Household appliances, fitting and repairs	8	108.2	107.8	-1.0	0.2	-1.8	-1.2	-2.3	-0.9	-2.0	-1.0	-1.2	-1.5	-0.4	
05.3.1/2 Major appliances and small electric goods	7	107.7	107.4	-1.1	0.1	-1.7	-0.9	-2.5	-0.9	-2.1	-0.9	-1.1	-1.5	-0.3	
05.3.3 Repair of household appliances	1	110.3	109.0	-	1.1	-3.4	-3.4	-1.1	-1.4	-1.5	-2.5	-2.5	-2.2	-1.2	
05.4 Glassware, tableware and household utensils	6	118.7	117.5	0.6	-0.7	2.2	3.0	1.5	1.0	2.1	1.3	-0.9	0.3	-1.0	
05.5 Tools and equipment for house and garden	5	132.7	135.8	0.9	0.2	4.1	4.5	4.5	3.8	3.7	3.1	3.7	3.0	2.3	
05.6 Goods and services for routine maintenance	13	134.1	134.1	0.4	-1.0	2.2	1.9	1.1	1.2	0.1	1.9	1.9	1.5	0.1	
05.6.1 Non-durable household goods	5	136.4	130.7	0.8	-2.8	1.2	0.2	-1.0	-0.9	-3.7	0.5	0.2	-0.7	-4.2	
05.6.2 Domestic services and household services	8	128.0	131.5	0.2	0.1	2.9	2.9	2.4	2.5	2.5	2.8	2.9	2.9	2.8	
06.1 Medical products, appliances and equipment	12	109.0	110.8	-0.1	-0.2	3.1	2.2	2.0	1.5	1.8	2.2	1.3	1.7	1.6	
06.1.1 Pharmaceutical products	7	112.4	115.2	-0.1	-0.5	3.7	2.3	2.8	1.9	2.3	3.1	1.9	2.9	2.4	
06.1.2/3 Other medical and therapeutic equipment	5	104.8	105.3	-0.1	0.3	2.3	2.2	0.9	0.9	1.0	0.7	0.3	0.1	0.5	

Key:- zero or negligible .. not available (nec) not elsewhere covered

3 CPI: Detailed figures by divisions, groups and classes

continued

	Weights Index (2005=100)			Percentage change over 1 month				Percentage change over 12 months							
	2015	2014	2015	2014	2015	2014	2014	2014	2014	2014	2015	2015	2015	2015	
		Apr	Apr	Apr	Apr	Apr	Aug	Sep	Oct	Nov	Dec	Jan	Feb	Mar	Apr
06.2 Out-patient services	5	125.6	127.3	0.9	0.3	1.9	1.9	1.7	1.8	1.9	1.9	1.9	2.0	1.4	
06.2.1/3 Medical services & paramedical services	3	119.5	120.1	0.3	-0.4	1.5	1.5	1.1	1.2	1.3	1.0	1.1	1.1	0.4	
06.2.2 Dental services	2	132.5	136.3	1.5	1.3	2.2	2.3	2.3	2.4	2.4	2.8	2.8	3.1	2.8	
06.3 Hospital services	8	163.2	168.2	1.7	2.2	3.5	3.3	2.8	2.8	2.6	2.5	2.5	2.6	3.1	
07.1 Purchase of vehicles	40	103.2	102.6	0.6	0.6	1.5	1.1	0.4	-0.3	-0.4	-0.1	-0.3	-0.5	-0.6	
07.1.1A New cars	24	113.2	115.9	0.1	1.0	1.2	1.2	1.3	1.4	1.3	1.4	1.6	1.6	2.4	
07.1.1B Second-hand cars	14	86.6	82.4	1.1	0.3	1.8	0.4	-1.3	-3.0	-3.3	-2.9	-3.3	-4.0	-4.8	
07.1.2/3 Motorcycles and bicycles	2	122.5	123.3	1.7	-2.1	3.0	4.5	3.6	2.8	3.8	4.3	3.9	4.6	0.6	
07.2 Operation of personal transport equipment	77	143.0	136.0	0.2	0.8	-1.6	-2.1	-1.2	-1.7	-3.8	-6.8	-6.9	-5.4	-4.9	
07.2.1 Spare parts and accessories	6	122.3	120.4	0.3	0.1	3.4	-0.3	-0.3	-0.9	-1.6	-1.4	-1.3	-1.4	-1.5	
07.2.2 Fuels and lubricants	34	149.3	130.9	-0.1	1.6	-5.7	-6.0	-4.8	-5.9	-10.5	-16.2	-16.6	-13.7	-12.3	
07.2.3 Maintenance and repairs	23	138.6	142.0	-0.1	0.1	2.1	2.0	2.3	2.4	2.6	1.6	2.0	2.3	2.5	
07.2.4 Other services	14	128.0	128.7	1.5	0.2	2.3	1.8	2.0	1.9	2.1	2.2	1.9	1.9	0.6	
07.3 Transport services	32	181.9	180.5	7.9	2.4	6.6	4.0	4.9	3.7	2.8	3.5	4.4	4.5	-0.8	
07.3.1 Passenger transport by railway	12	158.0	161.8	1.4	0.9	3.4	3.2	4.0	4.5	3.9	3.5	3.3	3.0	2.5	
07.3.2 Passenger transport by road	12	140.5	140.3	3.5	0.8	0.8	1.7	1.3	0.9	0.8	1.7	3.1	2.6	-0.1	
07.3.3 Passenger transport by air	6	161.4	152.8	17.9	4.5	5.5	1.6	7.6	2.7	2.3	4.0	6.0	6.8	-5.3	
07.3.4 Passenger transport by sea and inland waterway	2	184.7	187.2	22.4	14.7	7.3	4.6	3.8	2.3	0.9	2.8	4.8	8.2	1.4	
08.1 Postal services	2	223.9	226.8	3.7	1.7	3.7	3.7	3.7	3.3	3.3	3.3	3.3	3.3	1.3	
08.2/3 Telephone and telefax equipment and services	29	109.4	110.4	-0.4	-0.1	0.6	0.7	0.4	0.3	0.6	-	0.7	0.7	0.9	
09.1 Audio-visual equipment and related products	23	44.8	41.0	-0.3	-0.5	-2.1	-4.8	-5.2	-7.8	-7.2	-6.3	-7.8	-8.3	-8.5	
09.1.1 Reception and reproduction of sound and pictures	5	44.0	39.2	-1.0	-0.9	-4.4	-4.9	-6.5	-8.4	-10.5	-9.7	-10.7	-11.1	-11.0	
09.1.2 Photographic, cinematographic and optical equipment	3	12.4	11.8	1.6	0.9	-10.8	-11.8	-11.8	-13.0	-7.9	-7.6	-4.4	-4.6	-5.2	
09.1.3 Data processing equipment	9	32.3	27.6	-1.4	-1.5	-2.8	-8.9	-7.4	-12.2	-9.8	-9.7	-13.8	-14.4	-14.5	
09.1.4 Recording media	5	81.1	80.3	1.0	0.8	4.3	2.8	0.6	-0.8	-2.4	-	-	-0.8	-1.0	
09.1.5 Repair of audio-visual equipment & related products	1	119.8	121.3	-	0.2	-0.7	-0.4	0.2	0.3	0.8	0.9	0.9	1.0	1.2	
09.2 Oth. major durables for recreation & culture	10	123.3	125.2	0.1	0.9	2.2	2.2	2.3	2.0	1.9	1.6	0.7	0.7	1.6	
09.2.1/2 Major durables for in/outdoor recreation	10	123.3	125.2	0.1	0.9	2.2	2.2	2.3	2.0	1.9	1.6	0.7	0.7	1.6	
09.3 Other recreational items, gardens and pets	36	98.4	97.8	-2.6	-1.6	-0.1	-1.3	1.2	0.2	0.4	-0.9	-1.9	-1.6	-0.6	
09.3.1 Games, toys and hobbies	21	84.5	83.6	-4.3	-2.8	-1.3	-3.1	1.3	-0.5	-0.1	-1.6	-3.0	-2.6	-1.0	
09.3.2 Equipment for sport and open-air recreation	4	100.5	99.3	0.2	-1.1	2.6	1.2	0.1	-0.1	-0.8	-1.5	-1.3	0.2	-1.2	
09.3.3 Gardens, plants and flowers	4	114.4	112.3	-0.1	-0.1	-1.5	-0.9	-0.4	0.3	1.0	-0.8	-2.1	-2.0	-1.9	
09.3.4/5 Pets, related products and services	7	137.1	139.0	-0.2	0.9	2.4	2.3	2.2	2.0	2.0	0.9	1.1	0.3	1.4	
09.4 Recreational and cultural services	31	139.0	142.9	2.3	2.0	2.7	3.4	3.1	3.4	3.6	3.1	2.9	3.2	2.8	
09.4.1 Recreational and sporting services	8	141.5	146.0	3.1	2.6	2.3	2.7	2.9	3.1	3.0	3.7	3.6	3.6	3.2	
09.4.2 Cultural services	23	137.7	141.4	2.0	1.8	2.9	3.8	3.1	3.5	3.9	2.9	2.6	3.0	2.7	
09.5 Books, newspapers and stationery	14	136.1	138.4	1.0	1.2	8.0	6.3	5.4	4.3	5.1	3.8	1.0	1.5	1.7	
09.5.1 Books	4	126.9	126.0	3.7	2.9	17.5	11.4	8.2	4.9	10.3	5.8	-2.5	0.1	-0.7	
09.5.2 Newspapers and periodicals	5	152.6	157.9	0.1	1.2	6.0	5.8	5.9	4.9	4.1	4.0	3.6	2.3	3.5	
09.5.3/4 Misc. printed matter, stationery, drawing materials	5	123.6	125.6	-0.4	-0.2	2.3	2.6	2.3	2.9	1.6	1.3	0.9	1.4	1.6	
09.6 Package holidays	33	127.7	128.7	-0.1	0.2	1.2	1.2	0.9	0.8	0.8	0.7	0.7	0.5	0.8	
10.0 Education	26	222.2	244.3	-	-	10.3	10.3	10.0	10.0	10.0	10.0	10.0	10.0	10.0	
11.1 Catering services	100	133.3	135.6	0.1	0.1	2.5	2.1	2.4	2.3	2.1	1.9	1.9	1.7	1.7	
11.1.1 Restaurants & cafes	91	133.8	136.4	0.2	0.1	2.5	2.3	2.6	2.4	2.2	2.1	2.1	2.0	1.9	
11.1.2 Canteens	9	129.1	128.2	-	0.1	2.2	0.8	0.6	0.9	0.8	0.3	-	-0.7	-0.7	
11.2 Accommodation services	21	121.1	125.7	0.3	0.9	3.5	3.3	2.8	2.6	3.3	4.5	3.7	3.1	3.8	
12.1 Personal care	30	117.2	116.3	-0.6	-0.1	-0.4	-0.8	-0.5	-1.9	-0.8	-0.6	-1.1	-1.2	-0.7	
12.1.1 Hairdressing and personal grooming establishments	7	124.8	127.1	0.1	0.4	1.3	1.4	1.7	1.7	1.6	1.7	1.8	1.6	1.8	
12.1.2/3 Appliances and products for personal care	23	114.5	112.8	-0.8	-0.3	-0.9	-1.5	-1.2	-3.0	-1.6	-1.3	-2.0	-2.0	-1.5	
12.3 Personal effects (nec)	14	135.3	134.6	-0.3	-0.7	1.1	0.9	-0.1	-0.1	0.2	-0.9	-0.1	-0.1	-0.5	
12.3.1 Jewellery, clocks and watches	9	150.7	149.2	-0.3	-0.9	-	-	-	0.3	0.4	-0.5	-0.1	-0.5	-1.0	
12.3.2 Other personal effects	5	106.1	106.5	-0.2	-0.5	2.8	2.2	-0.4	-0.9	-0.3	-1.9	-	0.6	0.4	
12.4 Social protection	13	139.1	144.6	0.5	0.4	3.0	3.3	3.5	3.4	3.4	3.8	4.0	4.1	4.0	
12.5 Insurance	10	166.2	167.1	0.6	1.1	1.8	2.3	2.6	2.4	1.1	-0.1	0.3	-	0.5	
12.5.2 House contents insurance	2	102.7	100.4	1.9	-	2.6	1.2	3.6	3.6	-0.1	-1.1	0.6	-0.3	-2.2	
12.5.3 Health insurance	3	184.4	191.9	2.0	4.0	4.5	4.5	3.8	3.8	3.8	2.0	2.0	2.0	4.0	
12.5.4 Transport insurance	5	190.4	190.3	-1.3	-0.2	-1.5	0.8	0.6	0.3	-	-0.9	-1.0	-1.1	-0.1	
12.6 Financial services (nec)	12	95.1	92.2	-1.3	-	-4.8	-4.6	-4.1	-4.1	-4.1	-3.5	-3.7	-4.3	-3.0	
12.6.2 Other financial services (nec)	12	95.1	92.2	-1.3	-	-4.8	-4.6	-4.1	-4.1	-4.1	-3.5	-3.7	-4.3	-3.0	
12.7 Other services (nec)	12	132.3	132.6	-0.3	-	-	-0.2	-0.3	-0.3	-1.1	-0.1	-0.6	-	0.3	

Key:- zero or negligible .. not available (nec) not elsewhere covered

Source: Office for National Statistics

4 CPIH: Detailed figures by divisions, groups and classes¹

	Weights Index (2005=100)			Percentage change over 1 month				Percentage change over 12 months							
	2015	2014	2015	2014	2015	2014	2014	2014	2014	2014	2015	2015	2015	2015	
		Apr	Apr	Apr	Apr	Apr	Aug	Sep	Oct	Nov	Dec	Jan	Feb	Mar	Apr
CPIH (overall index) (NOT NATIONAL STATISTICS¹)	1 000	125.5	125.8	0.3	0.2	1.5	1.3	1.3	1.1	0.7	0.5	0.3	0.3	0.2	
01 Food and non-alcoholic beverages	90	144.9	140.7	-0.5	-0.4	-1.1	-1.3	-1.4	-1.7	-1.7	-2.6	-3.3	-3.0	-2.9	
02 Alcoholic beverages and tobacco	35	154.1	158.7	0.9	0.5	4.7	4.9	5.3	4.0	5.0	3.2	3.8	3.3	3.0	
03 Clothing and footwear	58	83.0	82.7	1.0	0.7	0.4	0.2	-0.2	-0.2	-0.3	1.4	1.7	-0.2	-0.4	
04 Housing, water, electricity, gas and other fuels	284	126.6	128.3	0.4	0.2	2.2	2.2	2.3	2.3	1.4	1.5	1.5	1.5	1.3	
05 Furniture, household equipment and maintenance	49	120.3	119.5	-0.9	-1.2	0.3	0.7	-	0.2	0.1	0.6	-0.4	-0.3	-0.6	
06 Health	20	129.9	132.5	0.7	0.7	2.8	2.4	2.2	2.0	2.1	2.1	1.8	2.1	2.0	
07 Transport	124	138.1	134.4	1.9	1.1	1.0	-	0.5	-0.2	-1.4	-2.8	-2.7	-1.9	-2.7	
08 Communication	25	113.5	114.6	-0.2	-0.1	0.8	0.8	0.5	0.5	0.7	0.1	0.8	0.8	1.0	
09 Recreation and culture	118	102.9	102.4	-0.1	0.2	1.5	0.7	1.0	0.3	0.5	0.1	-0.8	-0.7	-0.4	
10 Education	22	222.2	244.3	-	-	10.3	10.3	10.0	10.0	10.0	10.0	10.0	10.0	10.0	
11 Restaurants and hotels	99	131.5	134.2	0.2	0.2	2.6	2.3	2.4	2.3	2.3	2.3	2.2	1.9	2.0	
12 Miscellaneous goods and services	76	120.4	120.2	-0.4	-	-0.5	-0.5	-0.4	-0.8	-0.6	-0.5	-0.5	-0.5	-0.1	
04.2 Owner occupiers housing costs	178	114.1	116.3	0.2	0.1	1.6	1.7	1.7	1.6	1.7	1.9	1.9	2.0	1.9	
All goods	437	122.2	119.8	-0.2	-0.1	0.6	0.2	0.3	-0.2	-1.0	-1.5	-2.0	-2.1	-2.0	
All services	563	128.0	130.6	0.7	0.5	2.3	2.1	2.2	2.1	2.1	2.2	2.3	2.2	2.0	
CPIH excluding Energy, food, alcoholic beverages & tobacco	813	118.9	120.1	0.4	0.2	1.8	1.5	1.5	1.3	1.4	1.5	1.4	1.2	1.0	
01.1 Food	80	145.2	140.8	-0.6	-0.4	-1.2	-1.6	-1.6	-1.8	-1.9	-2.8	-3.4	-3.2	-3.0	
01.1.1 Bread and cereals	13	143.9	138.5	-0.1	-0.9	-1.6	-2.7	-0.9	-2.2	-2.5	-2.3	-3.1	-3.0	-3.7	
01.1.2 Meat	18	142.3	138.3	-0.2	-	0.1	-0.1	-1.5	-2.0	-1.8	-1.7	-2.4	-3.0	-2.8	
01.1.3 Fish	4	158.0	155.0	-3.4	-3.0	1.9	0.3	-0.4	-	0.2	1.1	-1.3	-2.2	-1.9	
01.1.4 Milk, cheese and eggs	11	136.7	132.1	-0.9	-0.6	-1.7	-0.5	-0.1	-0.2	-1.4	-3.5	-5.7	-3.6	-3.3	
01.1.5 Oils and fats	2	166.7	153.7	-0.7	-0.9	-4.6	-1.5	-1.5	-4.1	-2.4	-3.3	-2.7	-7.6	-7.8	
01.1.6 Fruit	8	143.3	142.0	-0.2	-	-0.6	-2.4	1.3	2.6	2.5	-0.1	0.7	-1.0	-0.9	
01.1.7 Vegetables including potatoes and tubers	12	144.3	137.9	-2.3	-0.6	-5.6	-6.9	-7.0	-6.6	-7.1	-7.9	-7.6	-6.1	-4.4	
01.1.8 Sugar, jam, syrups, chocolate and confectionery	10	156.1	154.5	1.2	0.5	1.6	2.8	-0.1	0.8	0.9	-0.5	-1.8	-0.3	-1.0	
01.1.9 Food products (nec)	2	131.4	124.7	-	0.6	-	-0.6	-2.6	-4.5	-3.1	-7.3	-5.5	-5.8	-5.1	
01.2 Non-alcoholic beverages	10	142.0	139.6	-	-0.2	0.1	0.2	-0.4	-1.2	-0.5	-0.8	-2.1	-1.4	-1.7	
01.2.1 Coffee, tea and cocoa	2	150.2	148.2	-0.5	1.4	-1.1	-1.5	-2.5	-3.5	1.6	-2.9	-0.7	-3.1	-1.3	
01.2.2 Mineral waters, soft drinks and juices	8	140.0	137.2	0.2	-0.6	0.1	0.4	0.1	-0.8	-1.3	-0.2	-2.7	-1.1	-2.0	
02.1 Alcoholic beverages	15	125.9	123.9	-1.4	-1.0	0.1	0.6	0.9	-1.0	1.2	-2.0	-1.2	-2.0	-1.6	
02.1.1 Spirits	4	132.5	131.7	-2.5	-2.5	-0.4	-0.6	1.6	-3.1	-0.5	-2.0	3.0	-0.6	-0.6	
02.1.2 Wine	7	128.1	126.9	-1.6	-	1.4	1.4	1.2	-0.1	3.5	1.0	-1.7	-2.5	-0.9	
02.1.3 Beer	4	113.2	109.0	0.4	-1.1	-1.3	0.5	-0.7	0.1	-0.5	-6.8	-4.7	-2.3	-3.7	
02.2 Tobacco	20	177.6	188.9	2.6	1.6	8.0	8.1	8.5	7.6	7.7	7.3	7.6	7.5	6.4	
03.1 Clothing	50	82.8	82.5	0.8	0.9	0.4	0.2	-0.3	-0.1	-0.4	1.6	1.7	-0.5	-0.3	
03.1.2 Garments	45	81.0	80.5	0.6	0.8	0.6	0.4	-0.3	-0.1	-0.3	1.5	1.8	-0.7	-0.6	
03.1.3 Other clothing and clothing accessories	4	100.1	101.5	1.9	2.0	-1.8	-1.1	-0.7	-0.8	-2.2	2.5	0.9	1.3	1.4	
03.1.4 Cleaning, repair and hire of clothing	1	129.0	132.2	0.2	0.3	2.8	2.6	2.6	2.7	2.4	2.3	2.3	2.4	2.5	
03.2 Footwear including repairs	8	84.6	83.7	2.3	-0.3	0.3	0.1	0.2	-0.7	0.1	0.3	1.3	1.5	-1.1	
04.1 Actual rentals for housing	60	125.6	129.0	1.0	0.8	2.3	2.4	2.7	2.7	2.7	2.7	2.8	2.9	2.7	
04.2 Owner occupiers housing costs	178	114.1	116.3	0.2	0.1	1.6	1.7	1.7	1.6	1.7	1.9	1.9	2.0	1.9	
04.3 Regular maintenance and repair of the dwelling	2	129.6	130.1	-0.7	-0.1	0.2	-0.4	-0.5	-	0.1	-0.8	-0.3	-0.2	0.3	
04.3.1 Materials for maintenance and repair	1	139.2	139.4	-1.4	-0.3	-	-0.8	-1.0	-	0.1	-1.8	-0.9	-0.9	0.2	
04.3.2 Services for maintenance and repair	1	118.1	118.6	-	-	0.4	0.3	-	-	0.2	0.1	0.3	0.4	0.4	
04.4 Water supply and misc. services for the dwelling	10	151.8	150.7	2.4	-0.7	2.4	2.4	2.4	2.4	2.4	2.4	2.4	2.4	-0.7	
04.4.1 Water supply	5	150.3	147.8	1.6	-1.7	1.6	1.6	1.6	1.6	1.6	1.6	1.6	1.6	-1.7	
04.4.3 Sewerage collection	5	154.1	154.6	3.2	0.3	3.2	3.2	3.2	3.2	3.2	3.2	3.2	3.2	0.3	
04.5 Electricity, gas and other fuels	34	217.0	210.4	-0.6	-0.1	4.5	4.4	4.3	4.3	-2.3	-2.2	-2.6	-3.5	-3.0	
04.5.1 Electricity	16	198.6	198.2	-0.6	-0.2	5.6	5.6	5.6	5.6	-0.8	-0.7	-0.9	-0.6	-0.2	
04.5.2 Gas	16	249.4	239.9	-0.5	-0.1	5.1	5.1	5.1	5.1	-1.6	-1.0	-1.9	-4.2	-3.8	
04.5.3 Liquid fuels	1	185.0	136.8	-1.6	0.2	-8.9	-12.2	-13.9	-13.3	-22.6	-30.8	-27.3	-27.4	-26.0	
04.5.4 Solid fuels	1	183.2	185.7	0.2	0.1	2.2	2.3	3.0	2.1	1.9	1.1	1.2	1.4	1.3	
05.1 Furniture, furnishings and carpets	18	120.7	119.2	-2.0	-2.4	-0.2	0.5	-0.2	-	0.6	0.6	-1.5	-0.8	-1.3	
05.1.1 Furniture and furnishings	13	118.5	118.2	-2.5	-2.2	-0.8	0.8	-1.0	-1.2	-0.3	0.2	-2.1	-0.5	-0.2	
05.1.2 Carpets and other floor coverings	5	125.1	120.1	-0.5	-3.2	1.3	-1.9	1.5	3.3	3.6	1.5	0.5	-1.4	-4.0	
05.2 Household textiles	5	98.2	96.9	-1.9	-1.1	-2.6	-1.6	-1.8	-1.8	-2.4	-1.2	-1.7	-2.2	-1.4	
05.3 Household appliances, fitting and repairs	7	108.2	107.8	-1.0	0.2	-1.9	-1.3	-2.3	-0.9	-2.0	-1.1	-1.2	-1.6	-0.4	
05.3.1/2 Major appliances and small electric goods	6	107.7	107.4	-1.1	0.1	-1.7	-0.9	-2.5	-0.9	-2.1	-0.9	-1.1	-1.5	-0.3	
05.3.3 Repair of household appliances	1	110.3	109.0	-	1.1	-3.4	-3.4	-1.1	-1.4	-1.5	-2.5	-2.5	-2.2	-1.2	
05.4 Glassware, tableware and household utensils	5	118.7	117.5	0.6	-0.7	2.2	3.0	1.5	1.0	2.1	1.3	-0.9	0.3	-1.0	
05.5 Tools and equipment for house and garden	4	132.7	135.8	0.9	0.2	4.1	4.5	4.5	3.8	3.7	3.1	3.7	3.0	2.3	
05.6 Goods and services for routine maintenance	10	134.1	134.1	0.4	-1.0	2.2	1.8	1.1	1.1	-	1.9	1.8	1.5	-	
05.6.1 Non-durable household goods	4	136.4	130.7	0.8	-2.8	1.2	0.2	-1.0	-0.9	-3.7	0.5	0.2	-0.7	-4.2	
05.6.2 Domestic services and household services	6	128.0	131.5	0.2	0.1	2.9	2.9	2.4	2.5	2.5	2.8	2.9	2.9	2.8	
06.1 Medical products, appliances and equipment	10	108.9	110.7	-0.1	-0.2	3.0	2.2	2.0	1.5	1.8	2.0	1.2	1.7	1.6	
06.1.1 Pharmaceutical products	6	112.4	115.2	-0.1	-0.5	3.7	2.3	2.8	1.9	2.3	3.1	1.9	2.9	2.4	
06.1.2/3 Other medical and therapeutic equipment	4	104.8	105.3	-0.1	0.3	2.3	2.2	0.9	0.9	1.0	0.7	0.3	0.1	0.5	

4 CPIH: Detailed figures by divisions, groups and classes¹

continued

	Weights Index (2005=100)			Percentage change over 1 month				Percentage change over 12 months							
	2015	2014	2015	2014	2015	2014	2014	2014	2014	2014	2015	2015	2015	2015	
		Apr	Apr	Apr	Apr	Apr	Aug	Sep	Oct	Nov	Dec	Jan	Feb	Mar	Apr
06.2 Out-patient services	4	125.7	127.7	0.9	0.5	1.9	1.9	1.7	1.8	1.9	1.9	1.9	2.1	1.6	
06.2.1/3 Medical services & paramedical services	2	119.5	120.1	0.3	-0.4	1.5	1.5	1.1	1.2	1.3	1.0	1.1	1.1	0.4	
06.2.2 Dental services	2	132.5	136.3	1.5	1.3	2.2	2.3	2.3	2.4	2.4	2.8	2.8	3.1	2.8	
06.3 Hospital services	6	163.2	168.2	1.7	2.2	3.5	3.3	2.8	2.8	2.6	2.5	2.5	2.6	3.1	
07.1 Purchase of vehicles	34	102.9	102.4	0.6	0.5	1.5	1.0	0.4	-0.3	-0.4	-0.1	-0.3	-0.5	-0.5	
07.1.1A New cars	20	113.2	115.9	0.1	1.0	1.2	1.2	1.3	1.4	1.3	1.4	1.6	1.6	2.4	
07.1.1B Second-hand cars	12	86.6	82.4	1.1	0.3	1.8	0.4	-1.3	-3.0	-3.3	-2.9	-3.3	-4.0	-4.8	
07.1.2/3 Motorcycles and bicycles	2	122.5	123.3	1.7	-2.1	3.0	4.5	3.6	2.8	3.8	4.3	3.9	4.6	0.6	
07.2 Operation of personal transport equipment	63	143.3	136.3	0.2	0.8	-1.6	-2.1	-1.2	-1.7	-3.8	-6.8	-6.9	-5.4	-4.9	
07.2.1 Spare parts and accessories	5	122.3	120.4	0.3	0.1	3.4	-0.3	-0.3	-0.9	-1.6	-1.4	-1.3	-1.4	-1.5	
07.2.2 Fuels and lubricants	28	149.3	130.9	-0.1	1.6	-5.7	-6.0	-4.8	-5.9	-10.5	-16.2	-16.6	-13.7	-12.3	
07.2.3 Maintenance and repairs	19	138.6	142.0	-0.1	0.1	2.1	2.0	2.3	2.4	2.6	1.6	2.0	2.3	2.5	
07.2.4 Other services	11	128.0	128.7	1.5	0.2	2.3	1.8	2.0	1.9	2.1	2.2	1.9	1.9	0.6	
07.3 Transport services	27	181.2	180.5	7.8	2.6	5.9	3.8	4.9	3.8	2.8	3.6	4.6	4.7	-0.4	
07.3.1 Passenger transport by railway	10	158.0	161.8	1.4	0.9	3.4	3.2	4.0	4.5	3.9	3.5	3.3	3.0	2.5	
07.3.2 Passenger transport by road	10	140.5	140.3	3.5	0.8	0.8	1.7	1.3	0.9	0.8	1.7	3.1	2.6	-0.1	
07.3.3 Passenger transport by air	5	161.4	152.8	17.9	4.5	5.5	1.6	7.6	2.7	2.3	4.0	6.0	6.8	-5.3	
07.3.4 Passenger transport by sea and inland waterway	2	184.7	187.2	22.4	14.7	7.3	4.6	3.8	2.3	0.9	2.8	4.8	8.2	1.4	
08.1 Postal services	1	223.9	226.8	3.7	1.7	3.7	3.7	3.7	3.3	3.3	3.3	3.3	3.3	1.3	
08.2/3 Telephone and telefax equipment and services	24	109.4	110.4	-0.4	-0.1	0.6	0.7	0.4	0.3	0.6	-	0.7	0.7	0.9	
09.1 Audio-visual equipment and related products	18	45.8	41.8	-0.4	-0.5	-1.9	-4.6	-5.1	-7.7	-7.2	-6.5	-8.0	-8.5	-8.6	
09.1.1 Reception and reproduction of sound and pictures	4	44.0	39.2	-1.0	-0.9	-4.4	-4.9	-6.5	-8.4	-10.5	-9.7	-10.7	-11.1	-11.0	
09.1.2 Photographic, cinematographic and optical equipment	2	12.4	11.8	1.6	0.9	-10.8	-11.8	-11.8	-13.0	-7.9	-7.6	-4.4	-4.6	-5.2	
09.1.3 Data processing equipment	7	32.3	27.6	-1.4	-1.5	-2.8	-8.9	-7.4	-12.2	-9.8	-9.7	-13.8	-14.4	-14.5	
09.1.4 Recording media	4	81.1	80.3	1.0	0.8	4.3	2.8	0.6	-0.8	-2.4	-	-	-0.8	-1.0	
09.1.5 Repair of audio-visual equipment & related products	1	119.8	121.3	-	0.2	-0.7	-0.4	0.2	0.3	0.8	0.9	0.9	1.0	1.2	
09.2 Oth. major durables for recreation & culture	8	123.3	125.2	0.1	0.9	2.2	2.2	2.3	2.0	1.9	1.6	0.7	0.7	1.6	
09.2.1/2 Major durables for in/outdoor recreation	8	123.3	125.2	0.1	0.9	2.2	2.2	2.3	2.0	1.9	1.6	0.7	0.7	1.6	
09.3 Other recreational items, gardens and pets	29	98.5	97.9	-2.5	-1.6	-	-1.2	1.2	0.2	0.4	-0.8	-1.8	-1.5	-0.6	
09.3.1 Games, toys and hobbies	17	84.5	83.6	-4.3	-2.8	-1.3	-3.1	1.3	-0.5	-0.1	-1.6	-3.0	-2.6	-1.0	
09.3.2 Equipment for sport and open-air recreation	3	100.5	99.3	0.2	-1.1	2.6	1.2	0.1	-0.1	-0.8	-0.5	-1.3	0.2	-1.2	
09.3.3 Gardens, plants and flowers	3	114.4	112.3	-0.1	-0.1	-1.5	-0.9	-0.4	0.3	1.0	-0.8	-2.1	-2.0	-1.9	
09.3.4/5 Pets, related products and services	6	137.1	139.0	-0.2	0.9	2.4	2.3	2.2	2.0	2.0	0.9	1.1	0.3	1.4	
09.4 Recreational and cultural services	25	139.0	143.0	2.3	2.0	2.8	3.4	3.1	3.4	3.6	3.1	2.9	3.2	2.9	
09.4.1 Recreational and sporting services	7	141.5	146.0	3.1	2.6	2.3	2.7	2.9	3.1	3.0	3.7	3.6	3.6	3.2	
09.4.2 Cultural services	18	137.7	141.4	2.0	1.8	2.9	3.8	3.1	3.5	3.9	2.9	2.6	3.0	2.7	
09.5 Books, newspapers and stationery	11	136.2	138.6	0.9	1.2	7.8	6.2	5.3	4.2	5.0	3.7	1.1	1.5	1.8	
09.5.1 Books	3	126.9	126.0	3.7	2.9	17.5	11.4	8.2	4.9	10.3	5.8	-2.5	0.1	-0.7	
09.5.2 Newspapers and periodicals	4	152.6	157.9	0.1	1.2	6.0	5.8	5.9	4.9	4.1	4.0	3.6	2.3	3.5	
09.5.3/4 Misc. printed matter, stationery, drawing materials	4	123.6	125.6	-0.4	-0.2	2.3	2.6	2.3	2.9	1.6	1.3	0.9	1.4	1.6	
09.6 Package holidays	27	127.7	128.7	-0.1	0.2	1.2	1.2	0.9	0.8	0.8	0.7	0.7	0.5	0.8	
10.0 Education	22	222.2	244.3	-	-	10.3	10.3	10.0	10.0	10.0	10.0	10.0	10.0	10.0	
11.1 Catering services	82	133.3	135.6	0.1	0.1	2.5	2.1	2.4	2.3	2.1	1.9	1.9	1.7	1.7	
11.1.1 Restaurants & cafes	75	133.8	136.4	0.2	0.1	2.5	2.3	2.6	2.4	2.2	2.1	2.1	2.0	1.9	
11.1.2 Canteens	7	129.1	128.2	-	0.1	2.2	0.8	0.6	0.9	0.8	0.3	-	-0.7	-0.7	
11.2 Accommodation services	17	121.1	125.7	0.3	0.9	3.5	3.3	2.8	2.6	3.3	4.5	3.7	3.1	3.8	
12.1 Personal care	25	117.1	116.3	-0.6	-0.1	-0.3	-0.8	-0.5	-1.8	-0.8	-0.6	-1.1	-1.1	-0.7	
12.1.1 Hairdressing and personal grooming establishments	6	124.8	127.1	0.1	0.4	1.3	1.4	1.7	1.7	1.6	1.7	1.8	1.6	1.8	
12.1.2/3 Appliances and products for personal care	19	114.5	112.8	-0.8	-0.3	-0.9	-1.5	-1.2	-3.0	-1.6	-1.3	-2.0	-2.0	-1.5	
12.3 Personal effects (nec)	12	134.7	134.0	-0.3	-0.7	1.0	0.8	-0.1	-0.1	0.2	-0.9	-0.1	-0.1	-0.5	
12.3.1 Jewellery, clocks and watches	8	150.7	149.2	-0.3	-0.9	-	-	-	0.3	0.4	-0.5	-0.1	-0.5	-1.0	
12.3.2 Other personal effects	4	106.1	106.5	-0.2	-0.5	2.8	2.2	-0.4	-0.9	-0.3	-1.9	-	0.6	0.4	
12.4 Social protection	11	139.1	144.6	0.5	0.4	3.0	3.3	3.5	3.4	3.4	3.8	4.0	4.1	4.0	
12.5 Insurance	8	158.6	158.9	0.6	0.9	1.5	2.0	2.4	2.3	1.1	-0.2	0.2	-0.1	0.2	
12.5.2 House contents insurance	2	102.7	100.4	1.9	-	2.6	1.2	3.6	3.6	-0.1	-1.1	0.6	-0.3	-2.2	
12.5.3 Health insurance	2	184.4	191.9	2.0	4.0	4.5	4.5	3.8	3.8	3.8	2.0	2.0	2.0	4.0	
12.5.4 Transport insurance	4	190.4	190.3	-1.3	-0.2	-1.5	0.8	0.6	0.3	-	-0.9	-1.0	-1.1	-0.1	
12.6 Financial services (nec)	10	95.1	92.2	-1.3	-	-4.8	-4.6	-4.1	-4.1	-4.1	-3.5	-3.7	-4.3	-3.0	
12.6.2 Other financial services (nec)	10	95.1	92.2	-1.3	-	-4.8	-4.6	-4.1	-4.1	-4.1	-3.5	-3.7	-4.3	-3.0	
12.7 Other services (nec)	10	132.3	132.6	-0.3	-	-	-0.2	-0.3	-0.3	-1.1	-0.1	-0.6	-	0.3	

Key:- zero or negligible .. not available (nec) not elsewhere covered

Source: Office for National Statistics

¹ The National Statistics status of CPIH has been discontinued pending work to investigate and improve the method for measuring owner occupiers' housing costs in this index. The improvements from the resulting development work were introduced as part of the February 2015 dataset with the historical series revised back to 2005.