

29 September 2009

Coverage: England

Theme: Young
Runaways

Issued by

Department for Children,
Schools and Families
Sanctuary Buildings
Great Smith Street
London SW1P 3BT

Telephone:

Press Office

020 7925 6789

Public Enquiries

0870 000 2288

Statistician

Alexandra Sarikaki

Email

Alexandra.Sarikaki
@dcsf.gsi.gov.uk

Internet

<http://www.dcsf.gov.uk/rsgateway/DB/STR/d000875/index.shtml>

NI 71: Children Missing from Home or Care. Local Authority self-evaluation scores of measures to monitor, respond to and address runaway cases.

England, Oct 2008 to June 2009

Introduction

This release provides local level information on the self-evaluation scores given by each local authority in relation to available measures to monitor and respond to cases of Children Missing from Home or Care. Further information on how the data have been aggregated can be found in the notes on page 15.

This is **not** a National Statistics publication. The statistics have been released to provide information at local area between October 2008 and June 2009. The figures will be used as a baseline for local area target setting for National Indicator 71. Figures will be published six-monthly to help to establish and monitor national and Local Authority targets.

In a range from 0 to 3 (low–high), local authorities provided a self-evaluation score on each of the following five criteria. The extent to which:

- local information about running away is gathered
- local Needs Analysis, based on gathered information, is in place
- local procedures to meet the needs of runaways agreed
- protocols for responding to urgent/out of hours referrals from police or other agencies are in place
- local procedures include effective needs assessment protocols, to support effective prevention /intervention work.

A Local Authority overall score is calculated by summing the scores from each of these five criteria, giving a minimum of 0 and a maximum of 15. These currently represent the Local Authority level National Indicator 71. The England level national indicator is found by taking the average of the Local Authority overall scores.

CHARTS

Chart 1 Distribution of the overall self-evaluation scores for measures to monitor, respond to and address young runaway cases in England, October 2008-June 2009

Chart 2 Overall self-evaluation scores for measures to monitor, respond to and address young runaway cases in Government Office Regions in England, October 2008-June 2009

Chart 3 Self-evaluation scores for individual measures to monitor, respond to and address young runaway cases in each of the five self-evaluation criteria in England, October 2008-June 2009

Chart 4 Self-evaluation score that measures the extent to which 'local information about running away is gathered' in Government Office Regions in England, October 2008-June 2009

Chart 5 Self-evaluation score that measures the extent to which 'local needs analysis, based on gathered information, is in place' in Government Office Regions in England, October 2008-June 2009

Chart 6 Self-evaluation score that measures the extent to which 'local procedures to meet the needs of runaways agreed' in Government Office Regions in England, October 2008-June 2009

Chart 7 Self-evaluation score that measures the extent to which 'protocols for responding to urgent/out of hours referrals from police or other agencies are in place' in Government Office Regions in England, October 2008-June 2009

Chart 8 Self-evaluation score that measures the extent to which 'local procedures include effective needs assessment protocols, to support effective prevention /intervention work' in Government Office Regions in England, October 2008-June 2009

TABLES

Table 1 Self-Evaluation overall scores for measures to monitor, respond to and address young runaway cases in Local Authorities in England, October 2008-June 2009

Table 2 Self-Evaluation scores for measures on each of the five criteria of the indicator in Local Authorities in England, April-June 2009

Additional Tables available in Excel version only

Table 3 Self-Evaluation scores for measures on each of the five criteria of the indicator in Local Authorities in England, October 2008-December 2008

Table 4 Self-Evaluation scores for measures on each of the five criteria of the indicator in Local Authorities in England, January-March 2009

Chart 1 Distribution of the overall self-evaluation scores for measures to monitor, respond to and address young runaway cases in England, October 2008-June 2009

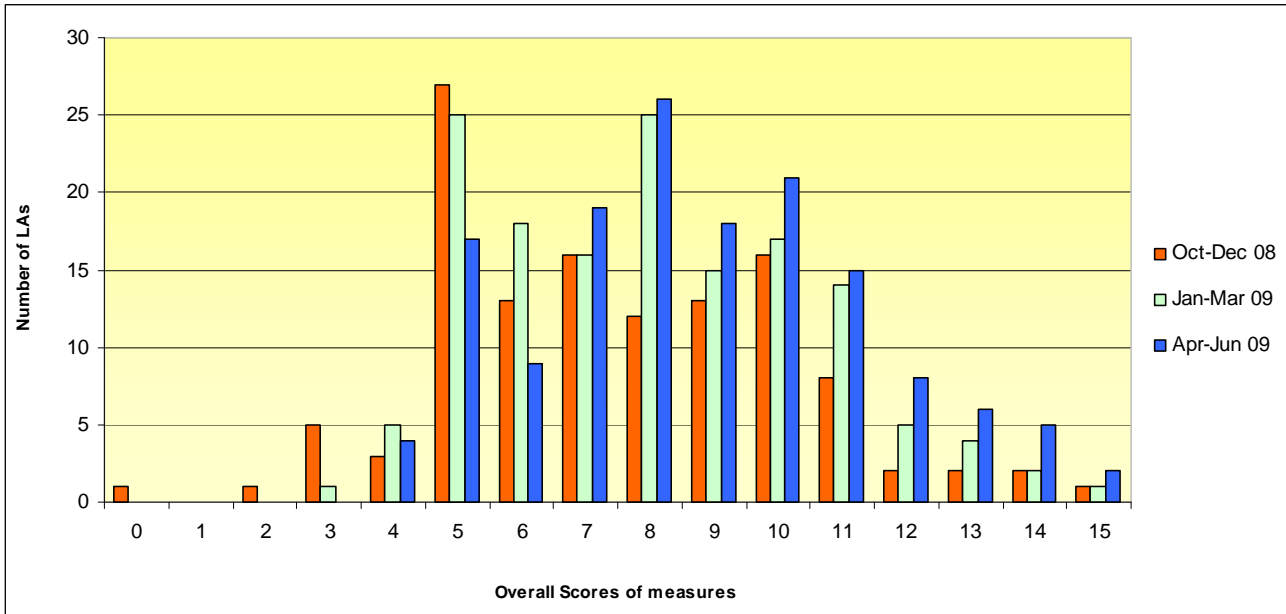


Chart 2 Overall self-evaluation scores for measures to monitor, respond to and address young runaway cases in Government Office Regions in England, October 2008-June 2009

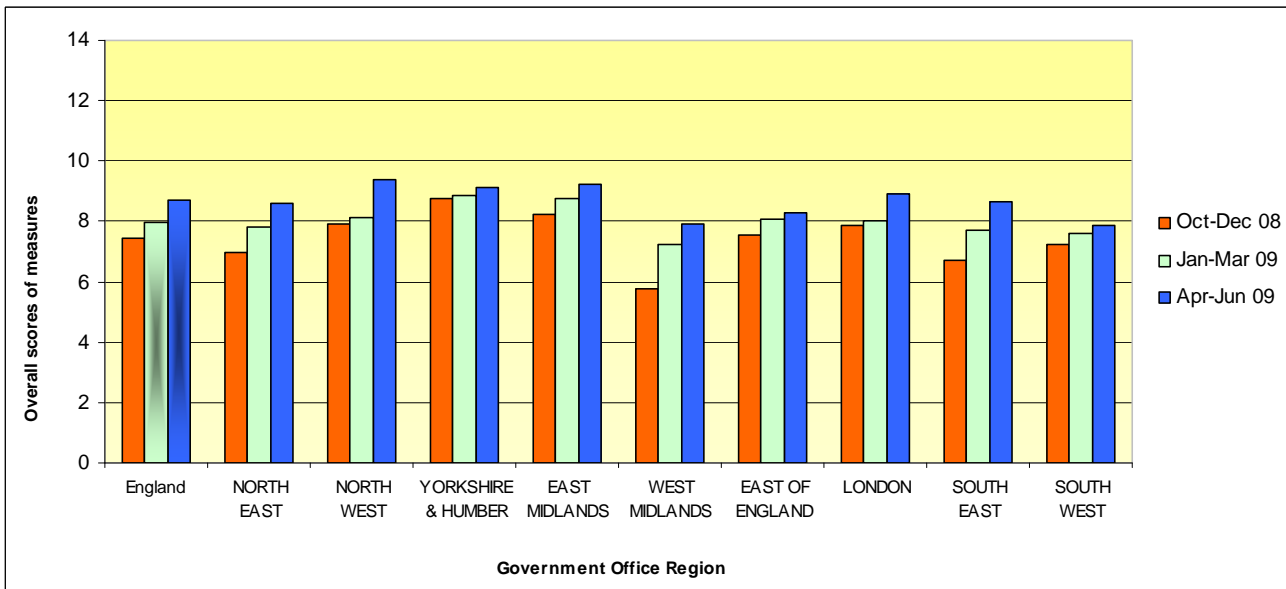


Chart 3 Self-evaluation scores for individual measures to monitor, respond to and address young runaway cases in each of the five self-evaluation criteria in England, October 2008-June 2009

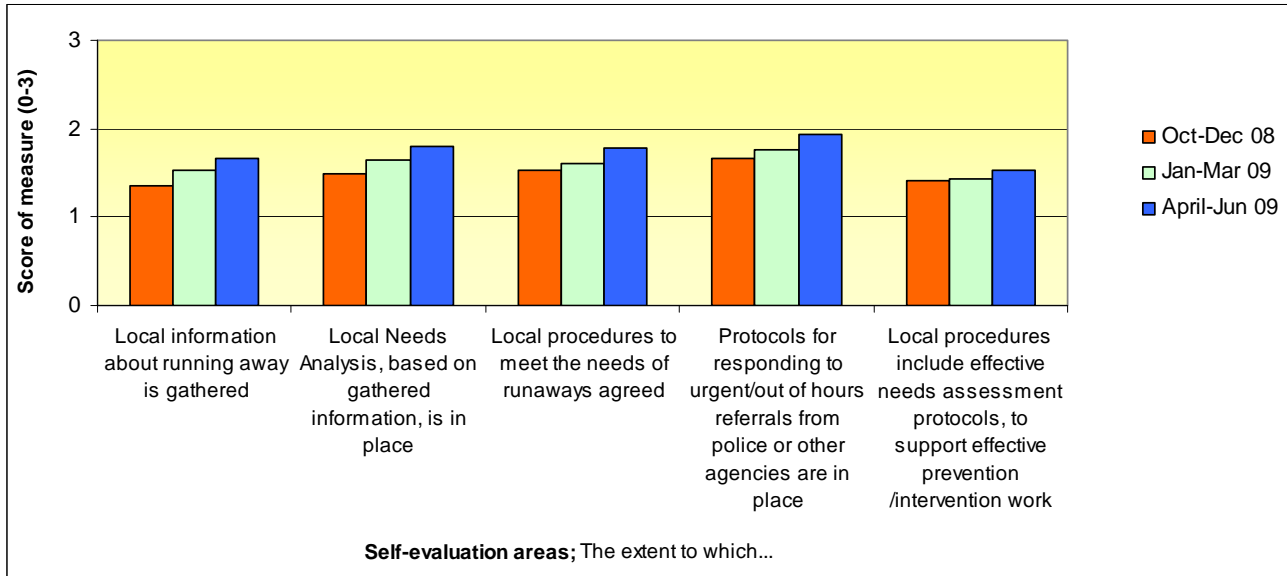


Chart 4 Self-evaluation score that measures the extent to which 'local information about running away is gathered' in Government Office Regions in England, October 2008-June 2009

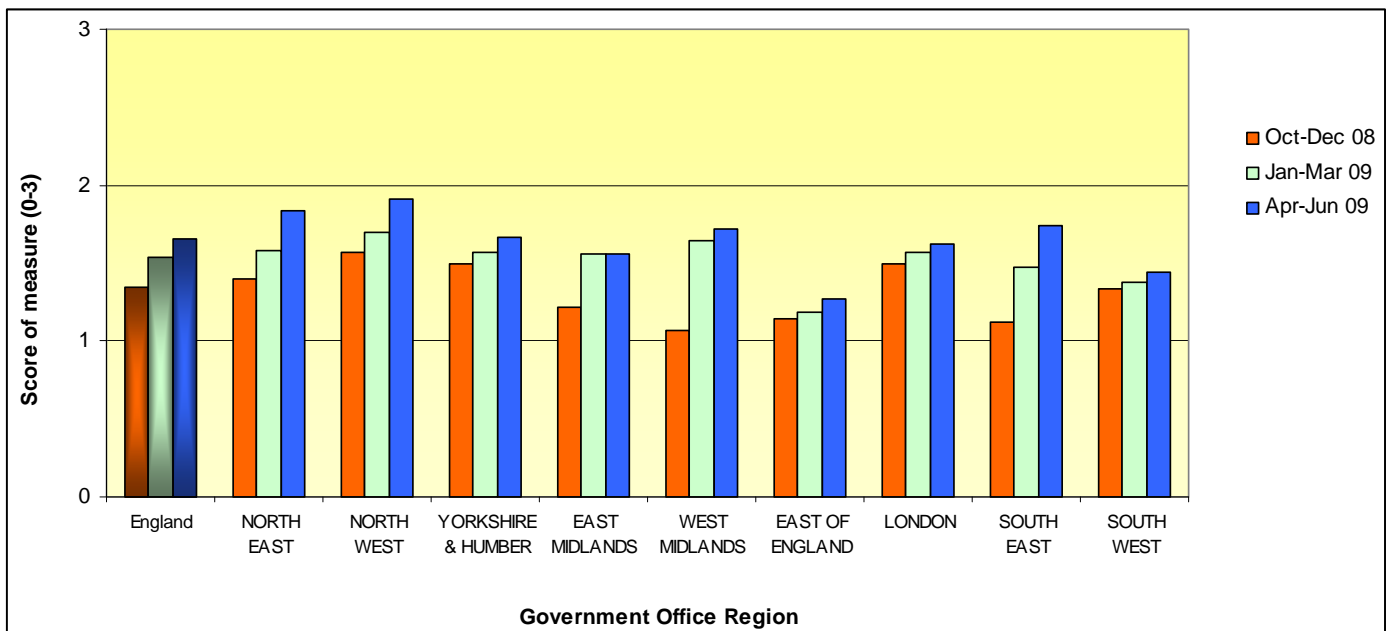


Chart 5 Self-evaluation score that measures the extent to which 'local needs analysis, based on gathered information, is in place' in Government Office Regions in England, October 2008-June 2009

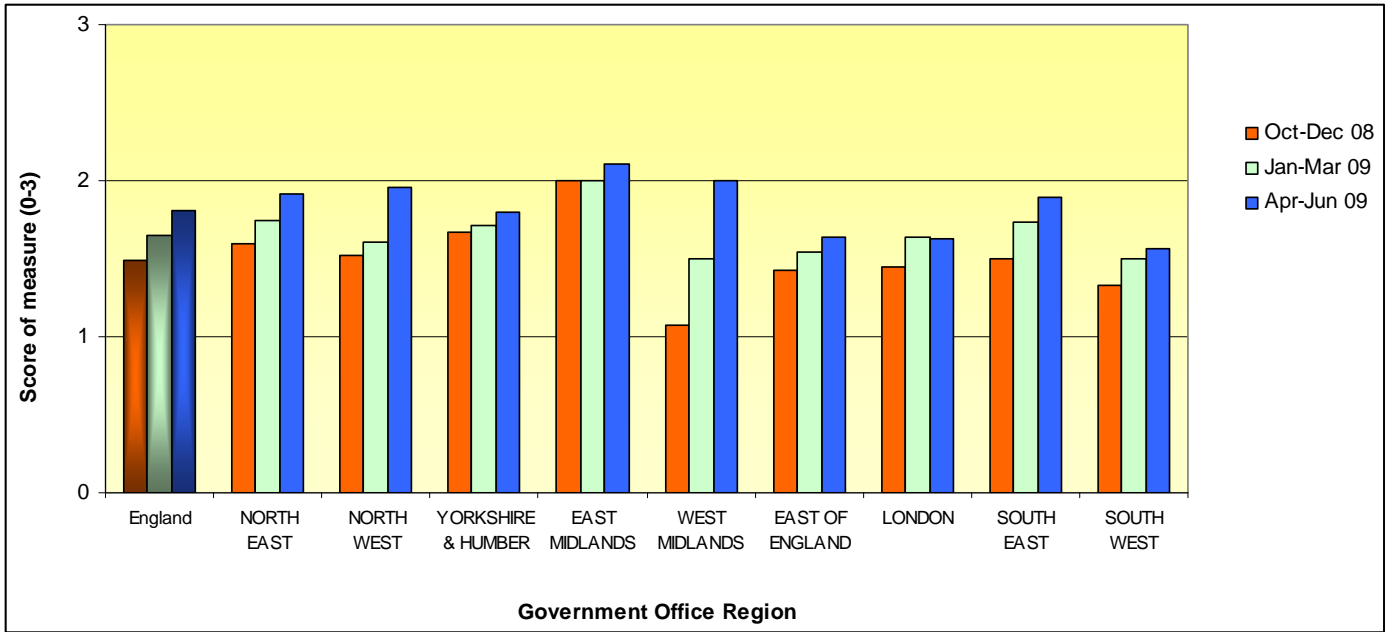


Chart 6 Self-evaluation score that measures the extent to which 'local procedures to meet the needs of runaways agreed' in Government Office Regions in England, October 2008-June 2009

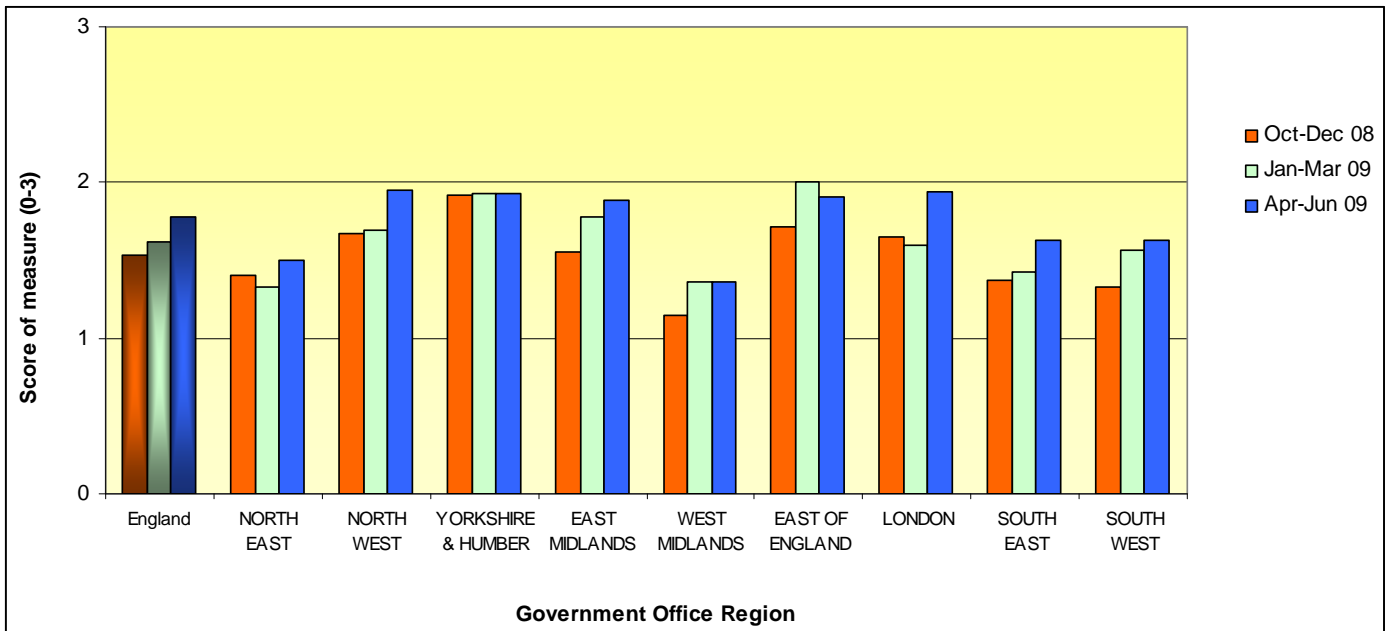


Chart 7 Self-evaluation score that measures the extent to which 'protocols for responding to urgent/out of hours referrals from police or other agencies are in place' in Government Office Regions in England, October 2008-June 2009

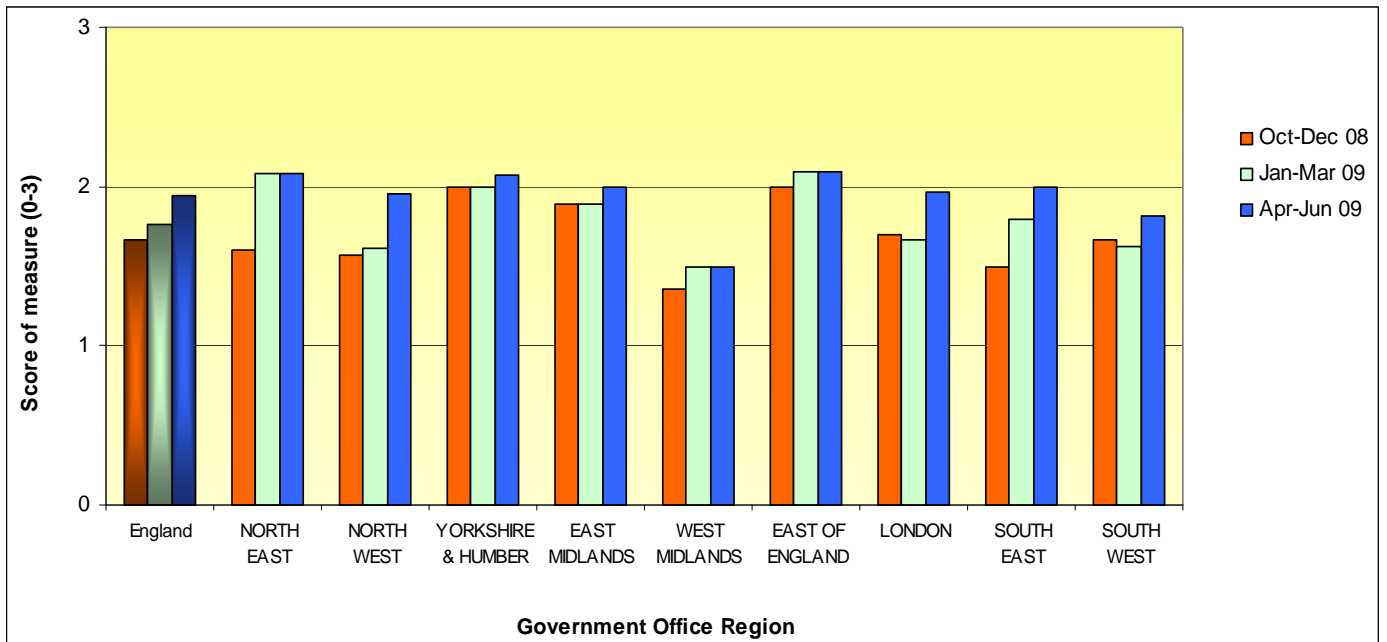


Chart 8 Self-evaluation score that measures the extent to which 'local procedures include effective needs assessment protocols, to support effective prevention /intervention work' in Government Office Regions in England, October 2008-June 2009

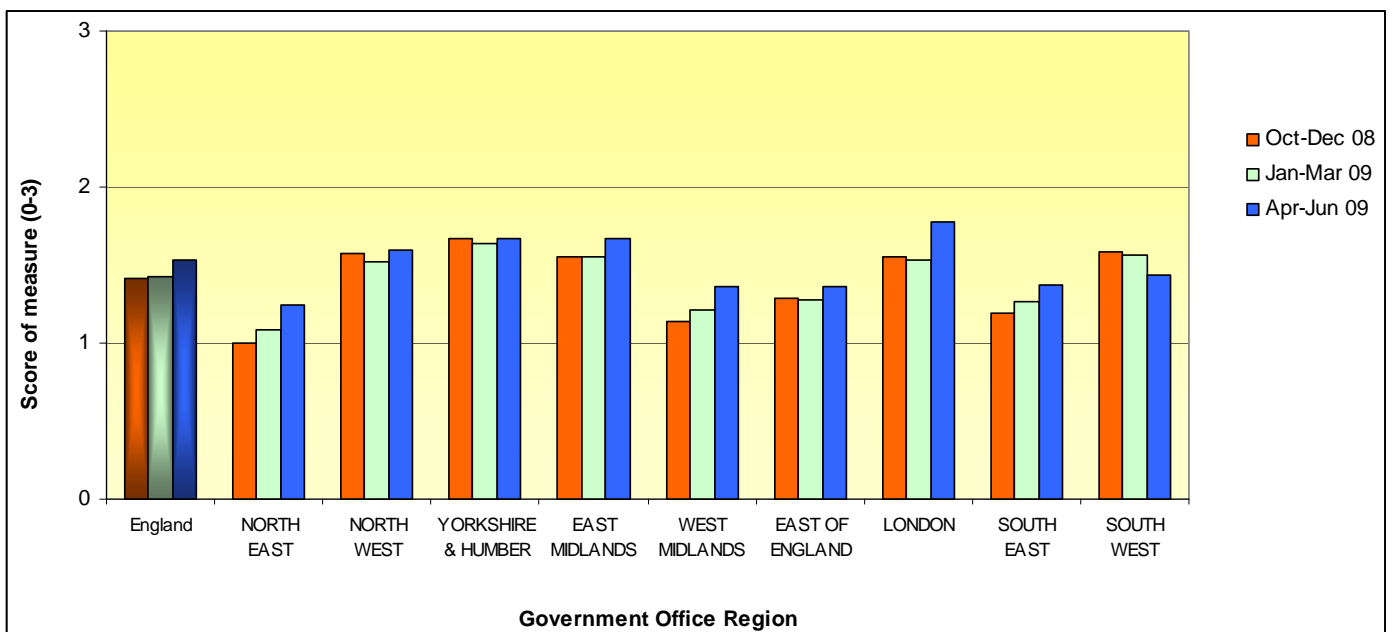


Table 1 Self-Evaluation overall scores for measures to monitor, respond to and address young runaway cases in Local Authorities in England, October 2008-June 2009

	Self-Evaluation Overall Score			
	Oct-Dec 08	Jan-Mar 09	Apr-Jun 09	Average
England	7.4	8.0	8.7	8.0
NORTH EAST	7.0	7.8	8.6	7.8
841 Darlington	7	7	7	7
840 Durham	7	7	8	7
390 Gateshead	8	9	10	9
805 Hartlepool	3	5	5	4
806 Middlesbrough	11	11	13	12
391 Newcastle upon Tyne	8	8	10	9
392 North Tyneside	11	11	12	11
929 Northumberland	5	6	6	6
807 Redcar and Cleveland	-	11	11	11
393 South Tyneside	5	8	9	7
808 Stockton-on-Tees	-	4	4	4
394 Sunderland	5	7	8	7
NORTH WEST	7.9	8.1	9.4	8.5
889 Blackburn with Darwen	7	7	8	7
890 Blackpool	10	11	11	11
350 Bolton	5	5	7	6
351 Bury	5	7	9	7
896 Cheshire West and Chester ¹	8	8	8	8
895 Cheshire East ¹	8	8	8	8
909 Cumbria	7	7	8	7
876 Halton	13	13	14	13
340 Knowsley	6	8	8	7
888 Lancashire	7	8	9	8
341 Liverpool	10	8	8	9
352 Manchester	10	10	10	10
353 Oldham	8	8	8	8
354 Rochdale	10	10	10	10
355 Salford	8	8	10	9
343 Sefton	5	5	5	5
342 St. Helens	8	8	12	9
356 Stockport	9	9	9	9
357 Tameside	5	7	8	7
358 Trafford	-	6	-	6
877 Warrington	7	8	13	9
359 Wigan	6	6	9	7
344 Wirral	12	12	14	13

Table 1 Self-Evaluation overall scores for measures to monitor, respond to and address young runaway cases in Local Authorities in England, October 2008-June 2009

	Self-Evaluation Overall Score			
	Oct-Dec 08	Jan-Mar 09	Apr-Jun 09	Average
YORKSHIRE & HUMBER	8.8	8.9	9.1	8.9
370 Barnsley	10	10	10	10
380 Bradford	-	-	8	8
381 Calderdale	-	4	4	4
371 Doncaster	-	9	12	11
811 East Riding of Yorkshire	6	6	6	6
810 Kingston Upon Hull, City of	11	11	11	11
382 Kirklees	13	13	13	13
383 Leeds	5	5	5	5
812 North East Lincolnshire	11	11	11	11
813 North Lincolnshire	6	12	13	10
815 North Yorkshire	5	5	5	5
372 Rotherham	14	14	14	14
373 Sheffield	9	9	10	9
384 Wakefield	11	11	11	11
816 York	4	4	4	4
EAST MIDLANDS	8.2	8.8	9.2	8.7
831 Derby	9	9	10	9
830 Derbyshire	11	11	12	11
856 Leicester	15	15	15	15
855 Leicestershire	7	8	8	8
925 Lincolnshire	5	6	8	6
928 Northamptonshire	6	7	7	7
892 Nottingham	6	7	7	7
891 Nottinghamshire	5	6	6	6
857 Rutland	10	10	10	10
WEST MIDLANDS	5.8	7.2	7.9	7.0
330 Birmingham	9	11	11	10
331 Coventry	7	8	7	7
332 Dudley	5	5	5	5
884 Herefordshire	0	3	5	3
333 Sandwell	7	7	7	7
893 Shropshire	5	6	7	6
334 Solihull	3	7	8	6
860 Staffordshire	10	11	11	11
861 Stoke-on-Trent	10	10	13	11
894 Telford and Wrekin	5	5	5	5
335 Walsall	7	10	11	9
937 Warwickshire	5	5	7	6
336 Wolverhampton	3	8	9	7
885 Worcestershire	5	5	5	5

Table 1 Self-Evaluation overall scores for measures to monitor, respond to and address young runaway cases in Local Authorities in England, October 2008-June 2009

	Self-Evaluation Overall Score			
	Oct-Dec 08	Jan-Mar 09	Apr-Jun 09	Average
EAST OF ENGLAND	7.6	8.1	8.3	8.0
822 Bedford ²	9	9	8	9
823 Central Bedfordshire ²	9	9	9	9
873 Cambridgeshire	3	4	4	4
881 Essex	9	9	9	9
919 Hertfordshire	-	5	5	5
821 Luton	8	10	10	9
926 Norfolk	6	11	11	9
874 Peterborough	-	7	7	7
882 Southend-on-Sea	8	10	10	9
935 Suffolk	10	10	10	10
883 Thurrock	-	5	8	7
LONDON	7.9	8.0	8.9	8.3
201 City of London	-	-	15	15
202 Camden	14	14	14	14
204 Hackney	-	-	9	9
205 Hammersmith and Fulham	6	6	9	7
309 Haringey	-	5	10	8
206 Islington	9	10	10	10
207 Kensington and Chelsea	8	8	11	9
208 Lambeth	11	11	11	11
209 Lewisham	5	8	9	7
316 Newham	-	5	7	6
210 Southwark	4	7	7	6
211 Tower Hamlets	6	6	7	6
212 Wandsworth	-	5	6	6
213 Westminster	9	9	11	10
301 Barking and Dagenham	2	4	7	4
302 Barnet	8	8	8	8
303 Bexley	-	6	7	7
304 Brent	-	6	6	6
305 Bromley	7	13	8	9
306 Croydon	11	11	11	11
307 Ealing	10	10	10	10
308 Enfield	5	5	8	6
203 Greenwich	-	7	7	7
310 Harrow	-	8	8	8
311 Havering	9	9	-	9
312 Hillingdon	10	10	11	10
313 Hounslow	-	5	5	5
314 Kingston upon Thames	9	10	10	10
315 Merton	-	12	12	12
317 Redbridge	5	5	8	6
318 Richmond upon Thames	9	9	11	10
319 Sutton	-	8	8	8
320 Waltham Forest	-	-	5	5

Table 1 Self-Evaluation overall scores for measures to monitor, respond to and address young runaway cases in Local Authorities in England, October 2008-June 2009

	Self-Evaluation Overall Score			
	Oct-Dec 08	Jan-Mar 09	Apr-Jun 09	Average
SOUTH EAST	6.7	7.7	8.6	7.7
867 Bracknell Forest	5	6	10	7
846 Brighton and Hove	6	8	8	7
825 Buckinghamshire	9	10	10	10
845 East Sussex	7	9	9	8
850 Hampshire	5	5	6	5
921 Isle of Wight	-	13	13	13
886 Kent	3	5	5	4
887 Medway	7	9	9	8
826 Milton Keynes	4	6	9	6
931 Oxfordshire	12	12	14	13
851 Portsmouth	-	5	5	5
870 Reading	5	5	7	6
871 Slough	5	8	12	8
852 Southampton	6	8	8	7
936 Surrey	6	6	6	6
869 West Berkshire	10	10	10	10
938 West Sussex	7	6	7	7
868 Windsor and Maidenhead	10	10	10	10
872 Wokingham	-	5	6	6
SOUTH WEST	7.3	7.6	7.9	7.6
800 Bath and North East Somerset	5	8	9	7
837 Bournemouth	-	6	7	7
801 Bristol, City of	7	7	7	7
908 Cornwall	10	9	9	9
878 Devon	-	7	9	8
835 Dorset	6	6	6	6
916 Gloucestershire	10	12	12	11
420 Isles of Scilly	-	5	5	5
802 North Somerset	9	11	12	11
879 Plymouth	-	9	9	9
836 Poole	5	5	5	5
933 Somerset	8	8	8	8
803 South Gloucestershire	5	5	5	5
866 Swindon	7	6	5	6
880 Torbay	10	8	8	9
865 Wiltshire	5	10	10	8

Notes

- 1 Up to March 2008 the local authorities of Cheshire West & Chester and Cheshire East used to be a single local authority under the name of Cheshire. The score in this case for October-December 2008 are as of before the split.
- 2 As above, up to March 2008 the local authorities of Bedford and Central Bedfordshire used to be a single local authority under the name of Bedfordshire. The score in this case for October-December 2008 are as of before the split.
- 3 Some local authorities did not provide information on the indicator. These cases are denoted by - .
- 4 See endnotes as to how the 'self-evaluation overall score' have been calculated.
- 5 For some local authorities the average is based on two or just one quarter returns (an example is Plymouth and Waltham

Table 2 Self-Evaluation scores for measures on each of the five criteria of the indicator in Local Authorities in England, April-June 2009

		Self-Evaluation Score; The extent to which...				
		Local information about running away is gathered	Local Needs Analysis, based on gathered information, is in place	Local procedures to meet the needs of runaways agreed	Protocols for responding to urgent/out of hours referrals from police or other agencies are in place	Local procedures include effective needs assessment protocols, to support effective prevention /intervention work
England		1.7	1.8	1.8	1.9	1.5
NORTH EAST		1.8	1.9	1.5	2.1	1.3
841	Darlington	1	2	1	2	1
840	Durham	2	1	1	2	2
390	Gateshead	2	3	1	2	2
805	Hartlepool	1	1	1	1	1
806	Middlesbrough	2	3	3	3	2
391	Newcastle upon Tyne	3	3	1	2	1
392	North Tyneside	3	3	3	2	1
929	Northumberland	1	1	1	2	1
807	Redcar and Cleveland	3	2	2	3	1
393	South Tyneside	2	2	2	2	1
808	Stockton-on-Tees	0	0	0	3	1
394	Sunderland	2	2	2	1	1
NORTH WEST		1.9	2.0	2.0	2.0	1.6
889	Blackburn with Darwen	1	2	1	2	2
890	Blackpool	2	2	1	3	3
350	Bolton	2	2	1	1	1
351	Bury	2	2	2	2	1
896	Cheshire West and Chester	2	2	2	1	1
895	Cheshire East	2	2	2	1	1
909	Cumbria	2	1	2	2	1
876	Halton	3	3	3	3	2
340	Knowsley	2	1	2	2	1
888	Lancashire	2	2	2	2	1
341	Liverpool	1	1	2	2	2
352	Manchester	1	1	3	2	3
353	Oldham	1	1	3	2	1
354	Rochdale	2	2	2	2	2
355	Salford	2	2	2	2	2
343	Sefton	1	1	1	1	1
342	St. Helens	2	3	3	2	2
356	Stockport	2	2	2	2	1
357	Tameside	2	2	1	2	1
358	Trafford	-	-	-	-	-
877	Warrington	3	3	2	2	3
359	Wigan	2	3	1	2	1
344	Wirral	3	3	3	3	2

Table 2 Self-Evaluation scores for measures on each of the five criteria of the indicator in Local Authorities in England, April-June 2009

		Self-Evaluation Score; The extent to which...				
		Local information about running away is gathered	Local Needs Analysis, based on gathered information, is in place	Local procedures to meet the needs of runaways agreed	Protocols for responding to urgent/out of hours referrals from police or other agencies are in place	Local procedures include effective needs assessment protocols, to support effective prevention /intervention work
YORKSHIRE & HUMBER		1.7	1.8	1.9	2.1	1.7
370	Barnsley	1	2	3	2	2
380	Bradford	1	2	1	2	2
381	Calderdale	1	1	0	1	1
371	Doncaster	2	2	3	3	2
811	East Riding of Yorkshire	1	2	1	1	1
810	Kingston Upon Hull, City of	2	3	1	2	3
382	Kirklees	2	2	3	3	3
383	Leeds	1	1	1	1	1
812	North East Lincolnshire	3	1	3	3	1
813	North Lincolnshire	3	3	3	3	1
815	North Yorkshire	1	1	1	1	1
372	Rotherham	3	2	3	3	3
373	Sheffield	2	1	2	2	3
384	Wakefield	2	3	3	2	1
816	York	0	1	1	2	0
EAST MIDLANDS		1.6	2.1	1.9	2.0	1.7
831	Derby	2	2	1	2	3
830	Derbyshire	2	3	2	2	3
856	Leicester	3	3	3	3	3
855	Leicestershire	1	2	2	3	0
925	Lincolnshire	1	2	2	2	1
928	Northamptonshire	1	1	2	1	2
892	Nottingham	2	2	1	1	1
891	Nottinghamshire	0	2	1	2	1
857	Rutland	2	2	3	2	1
WEST MIDLANDS		1.7	2.0	1.4	1.5	1.4
330	Birmingham	3	3	2	1	2
331	Coventry	1	1	2	1	2
332	Dudley	1	1	1	1	1
884	Herefordshire	1	1	1	1	1
333	Sandwell	1	1	1	3	1
893	Shropshire	2	2	1	1	1
334	Solihull	1	3	1	2	1
860	Staffordshire	3	3	2	2	1
861	Stoke-on-Trent	3	3	2	2	3
894	Telford and Wrekin	1	1	1	1	1
335	Walsall	2	3	2	2	2
937	Warwickshire	2	2	1	1	1
336	Wolverhampton	2	3	1	2	1
885	Worcestershire	1	1	1	1	1

Table 2 Self-Evaluation scores for measures on each of the five criteria of the indicator in Local Authorities in England, April-June 2009

		Self-Evaluation Score; The extent to which...				
		Local information about running away is gathered	Local Needs Analysis, based on gathered information, is in place	Local procedures to meet the needs of runaways agreed	Protocols for responding to urgent/out of hours referrals from police or other agencies are in place	Local procedures include effective needs assessment protocols, to support effective prevention /intervention work
EAST OF ENGLAND		1.3	1.6	1.9	2.1	1.4
822	Bedford	1	1	2	2	2
823	Central Bedfordshire	1	1	3	2	2
873	Cambridgeshire	1	0	1	1	1
881	Essex	1	3	2	2	1
919	Hertfordshire	1	1	1	1	1
821	Luton	2	2	2	2	2
926	Norfolk	2	3	2	3	1
874	Peterborough	1	1	2	2	1
882	Southend-on-Sea	1	2	2	3	2
935	Suffolk	2	3	2	2	1
883	Thurrock	1	1	2	3	1
LONDON		1.6	1.6	1.9	2.0	1.8
201	City of London	3	3	3	3	3
202	Camden	3	2	3	3	3
204	Hackney	0	1	3	2	3
205	Hammersmith and Fulham	2	1	3	1	2
309	Haringey	2	2	2	2	2
206	Islington	2	2	2	2	2
207	Kensington and Chelsea	2	2	3	2	2
208	Lambeth	2	2	2	3	2
209	Lewisham	2	2	1	2	2
316	Newham	1	1	2	2	1
210	Southwark	1	2	2	1	1
211	Tower Hamlets	1	1	1	3	1
212	Wandsworth	2	1	0	2	1
213	Westminster	2	2	3	2	2
301	Barking and Dagenham	1	1	2	2	1
302	Barnet	2	2	2	1	1
303	Bexley	1	1	1	3	1
304	Brent	1	1	1	2	1
305	Bromley	1	1	2	2	2
306	Croydon	1	1	3	3	3
307	Ealing	2	2	2	2	2
308	Enfield	2	2	1	1	2
203	Greenwich	1	1	2	2	1
310	Harrow	2	2	2	1	1
311	Havering	-	-	-	-	-
312	Hillingdon	2	3	2	2	2
313	Hounslow	1	1	1	1	1
314	Kingston upon Thames	2	2	2	2	2
315	Merton	2	3	3	1	3
317	Redbridge	1	1	2	2	2
318	Richmond upon Thames	2	2	2	3	2
319	Sutton	2	1	1	2	2
320	Waltham Forest	1	1	1	1	1

Table 2 Self-Evaluation scores for measures on each of the five criteria of the indicator in Local Authorities in England, April-June 2009

		Self-Evaluation Score; The extent to which...				
		Local information about running away is gathered	Local Needs Analysis, based on gathered information, is in place	Local procedures to meet the needs of runaways agreed	Protocols for responding to urgent/out of hours referrals from police or other agencies are in place	Local procedures include effective needs assessment protocols, to support effective prevention /intervention work
SOUTH EAST		1.7	1.9	1.6	2.0	1.4
867	Bracknell Forest	2	2	2	2	2
846	Brighton and Hove	1	2	1	3	1
825	Buckinghamshire	1	2	2	2	3
845	East Sussex	1	2	2	3	1
850	Hampshire	1	1	1	1	2
921	Isle of Wight	3	3	2	3	2
886	Kent	1	1	1	2	0
887	Medway	2	2	1	2	2
826	Milton Keynes	2	2	1	2	2
931	Oxfordshire	3	3	3	3	2
851	Portsmouth	2	1	1	0	1
870	Reading	2	1	2	2	0
871	Slough	3	3	2	3	1
852	Southampton	2	2	2	1	1
936	Surrey	1	2	1	1	1
869	West Berkshire	2	2	2	3	1
938	West Sussex	1	1	2	2	1
868	Windsor and Maidenhead	2	2	2	2	2
872	Wokingham	1	2	1	1	1
SOUTH WEST		1.4	1.6	1.6	1.8	1.4
800	Bath and North East Somerset	2	2	2	2	1
837	Bournemouth	1	2	1	2	1
801	Bristol, City of	1	1	1	2	2
908	Cornwall	2	2	1	3	1
878	Devon	2	1	3	2	1
835	Dorset	1	1	1	1	2
916	Gloucestershire	2	3	2	2	3
420	Isles of Scilly	1	0	1	1	2
802	North Somerset	2	3	3	3	1
879	Plymouth	2	2	2	1	2
836	Poole	1	1	1	1	1
933	Somerset	1	1	1	3	2
803	South Gloucestershire	1	1	1	1	1
866	Swindon	1	1	1	1	1
880	Torbay	1	2	2	2	1
865	Wiltshire	2	2	3	2	1

Notes

¹ Some local authorities did not provide information on the indicator. These cases are denoted by - .

NOTES

This is a new publication. The release provides data on the self-evaluation scores given by each local authority in relation to available measures to monitor and respond to cases of Children Missing from Home or Care.

Score/Grading

As stated in the introductory section, local authorities were requested to provide a self-evaluation score in five key criteria. The scores which range from 0 to 3 (low –high) have the following application in each of the five criteria:

Local information about running away is gathered

0 - No systematic collection and analysis of data.

1 – Some collection and analysis of data, but generally basic in nature.

2 – Substantial collection and analysis of data, although a few minor gaps exist.

3 – Thorough and systematic collection and analysis of data, which is monitored by appropriate bodies.

Local Needs Analysis, based on gathered information, is in place

0 – No analysis in place.

1 – Analysis in place, but not frequently updated.

2 – Analysis in place, and frequently updated, but not reviewed by LSCB.

3 - Analysis in place, frequently updated, and reviewed by LSCB.

Local procedures to meet the needs of runaways agreed

0 – No protocols or multi-agency response in place.

1 – Protocols and procedures under development.

2 – Protocols and procedures in place, alongside risk assessment tool.

3 – Protocols and procedures in place, alongside risk assessment tool which is jointed used by police and children's services.

Protocols for responding to urgent/out of hours referrals from police or other agencies are in place

0 – No protocols in place, and inappropriate provision for out of hour referrals.

1 – Protocols under development, but referrals are made whenever a young person is found or presents themselves out of hours.

2 – Protocols in place, and referrals are made whenever a young person is found or presents themselves out of hours.

3 – Protocols in place, referrals are made whenever a young person is found or presents themselves out of hours, and robust monitoring systems to support this.

Local procedures include effective needs assessment protocols, to support effective prevention/intervention work.

0 – No prevention services in place, and no imminent plans for there to be so.

1 – Prevention services under development, or in the early stages of implementation.

2 – Well established prevention services in place and is well known to those who may wish to use or make referrals to them

3 – Well established, well known prevention services in place and frequently and regularly reviewed

The sum of the above scores constitutes the self-evaluation overall score which currently represents the National indicator 71. In addition, the England level national indicator is found by taking the average of the Local Authority overall scores.

Coverage

This publication covers three quarterly sets of data (1. October-December 2008; 2. January-March 2009; and April-June 2009). The response numbers for each of the return was 121 local authorities in set one; 148 in set two and 150 out of the 152 local authorities, in set three. Since set two (January 2009) the self-evaluation scores were provided by the newly established local authorities of Cheshire West, Chester & Cheshire East as well as Bedford and Central Bedfordshire which used to be single authorities under the names of Cheshire and Bedfordshire respectively.

Data source and Quality

The publication demonstrates the extent to which local authorities consider themselves to be adequately equipped to administer care services for runaway from home cases. In this regard, it is acknowledged that there may be an element of subjectivity or bias to the scores as they are based on self assessment. The criteria and grading were developed in consultation with key stakeholders and trialled on a small group of local authorities.

It is the intention to review the methodology underpinning the national indicator on missing from home and care in the near future, improve the current data collection, and develop an analysis of comparative performance based on a more robust data source. It is also intended to establish baseline data in order to compare future years results.

General

1. Enquiries (non-media) about information contained in this Statistical Release should be addressed to Youth Research Team, 4th Floor Sanctuary Buildings, Great Smith Street, London, SW1P 3BT or email Alexandra.Sarikaki@dcyf.gov.uk
2. Media enquiries about information contained in this Statistical Release should be made to the Department's Press Office at DCYF, Sanctuary Buildings, Great Smith Street, London, SW1P 3BT or telephone 020 7925 6789.