

4 Property crime

Sian Moley

4.1 SUMMARY

Property crime covers the various ways that individuals, households or corporate bodies have their property damaged or are deprived of it by illegal means (or where there is intent to do so).

Between the 2007/08 and 2008/09 BCS there were no changes across the majority of the property crime categories, but there were increases in thefts from the person and bicycle thefts. Police recorded crime showed a decline in most of the main property crime categories between 2007/08 and 2008/09.

- There was no change in the level of domestic burglary as measured by the BCS. Overall, police recorded burglary also showed little change with a one per cent increase in domestic burglaries and a two per cent fall in non-domestic burglaries.
- BCS vehicle-related thefts and vandalism remained stable between the 2007/08 and 2008/09 survey, while there was a ten per cent fall in offences against vehicles and also in criminal damage recorded by the police.
- BCS thefts from the person increased by 25 per cent between the 2007/08 and 2008/09 interviews, but police recorded crime saw a 12 per cent fall in the number of these offences in 2008/09.
- The 2008/09 BCS shows an increase of 22 per cent in bicycle thefts compared with the previous year's survey, while the number of bicycle thefts recorded by the police remained stable.

Longer-term trends show that property crime covered by the BCS has fallen considerably since its peak in 1995 with the number of burglaries having declined by 58 per cent, vehicle-related thefts by 65 per cent and vandalism by 18 per cent.

For both burglary and vehicle-related thefts, households that do not have security measures in place were at higher risk of victimisation. For example:

- Eighty-seven per cent of households that had not been burgled in the previous 12 months had window locks, whereas in only 54 per cent of burglary incidents was the property fitted with window locks.
- Ninety-one per cent of all vehicle-owning households reported that their 'main' car or van had central locking and 67 per cent reported that it had an alarm, whereas only 64 per cent of stolen cars/vans had central locking and 40 per cent had an alarm fitted.

A large majority of fraud incidents do not come to the attention of the police and so police recorded crime is of limited value in assessing the extent of fraud. However, there is good data on card fraud from The UK Cards Association and the BCS.

- Based on BCS interviews in 2008/09, 6.4 per cent of credit, debit or bank card users were aware that they had been a victim of card fraud in the previous 12 months, compared with 4.7 per cent of card users interviewed in the 2007/08 BCS.
- The UK Cards Association recorded 2.8 million fraudulent transactions on UK-issued credit cards in the UK in 2008 (separate figures for England and Wales are not available), an increase of four per cent on the 2.7 million recorded in 2007.

4.2 INTRODUCTION

Property crime covers the various ways that individuals, households or corporate bodies have their property damaged or are deprived of it by illegal means (or where there is intent to do so). These include offences of burglary, theft, criminal damage and fraud. Robbery is not included in this chapter because although victims are deprived of their property there is also the use or threat of force, so these offences are discussed in Chapter 3 (Violent and Sexual Crime).

The recorded crime figures include crimes in all these categories, provided that they have been reported to and recorded by the police. The BCS provides reliable estimates of crimes against the adult and household population but does not include crimes against corporate bodies. For more information on the classification of the different offence types within property crime, see Section 5 of Volume 2.

4.3 BURGLARY

Extent and trends

All BCS burglary covers domestic burglaries, while police recorded figures include burglaries that occur in domestic properties and in commercial or other properties. Both BCS and police recorded burglary cover attempted as well as actual entry (see Section 5 of Volume 2).

The 2008/09 BCS shows there were an estimated 744,000 domestic burglary incidents in England and Wales, a similar level to the 2007/08 BCS. The number of domestic burglaries with entry to the property and attempted burglaries both remained stable between the 2007/08 and 2008/09 BCS, with an estimated 452,000 burglaries with entry and an estimated 292,000 attempted burglaries in 2008/09 (Table 2.01).

Recorded crime figures also showed there was little change in overall burglary in the past year, as the number of domestic burglaries rose by one per cent to 284,445 offences but the number of non-domestic burglaries fell by two per cent to 296,952 offences. Distraction burglaries, which account for three per cent of all domestic burglaries recorded by the police, fell by ten per cent between 2007/08 and 2008/09 (Table 2.04).

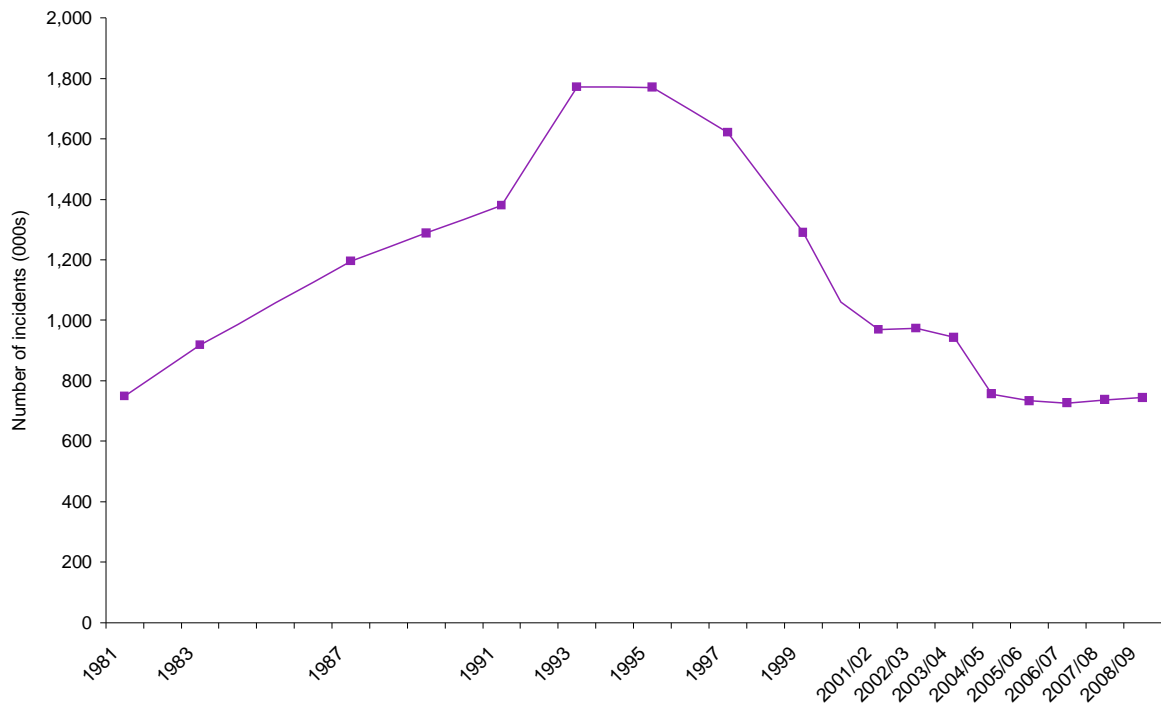
Longer-term trends for BCS and police recorded crime are similar over time with considerable falls in burglary levels since peaks in the mid-1990s (Figures 4.1 and 4.2, Tables 2.01 and 2.04).

Since the first BCS results for 1981 the number of domestic burglaries increased, to reach a peak of 1,770,000 incidents in 1995, before declining considerably, particularly between 1995 and 2001/02. In recent years the trend in domestic burglaries has been relatively stable. Overall, the number of burglaries estimated by the BCS has fallen by more than half (58%) since 1995, representing around one million (1,026,000) fewer incidents.

The number of burglaries recorded by the police in 2008/09 remained at a similar level to 2007/08, having fallen in each of the previous five years following a small rise during the period when the National Crime Recording Standard (NCRS) was introduced in 2002/03.

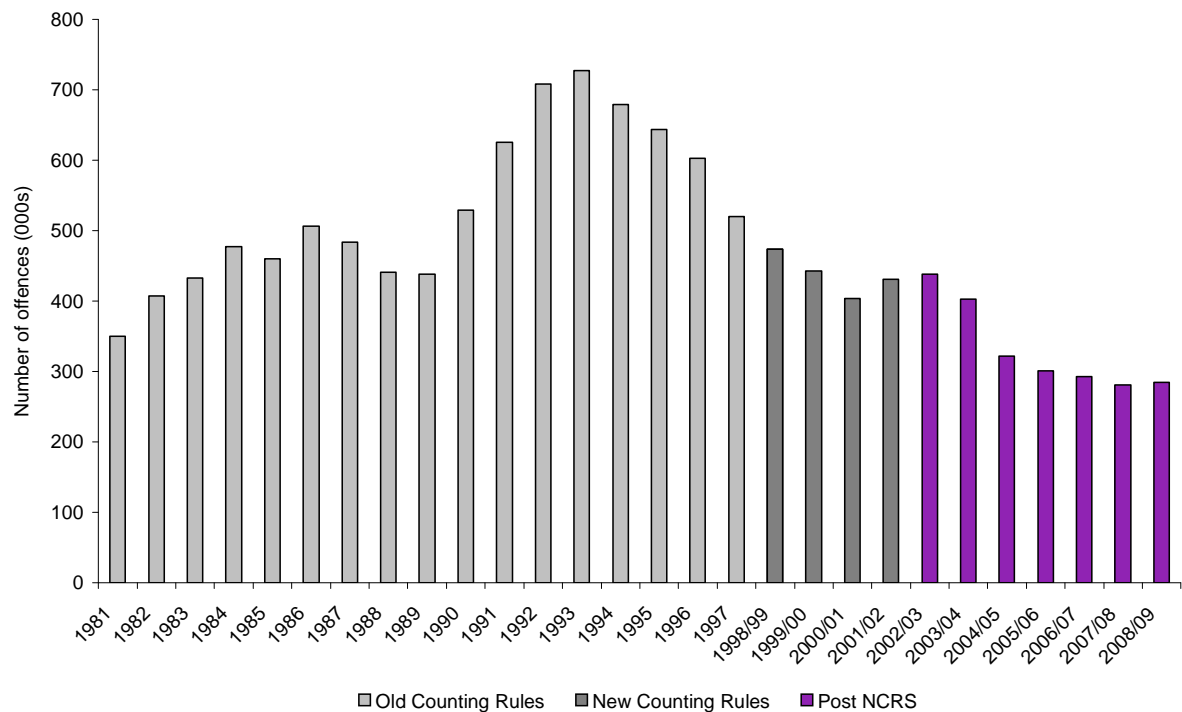
The 2008/09 BCS estimated that 65 per cent of domestic burglaries were reported to the police and that burglaries with loss were most likely to be reported (83%). Between the 2007/08 and 2008/09 BCS reporting rates for overall burglary have remained stable, but reporting of burglaries with loss to the police has increased (Table 2.09).

Figure 4.1 Trends in domestic burglary, 1981 to 2008/09 BCS



1. For an explanation of year-labels, see 'Conventions used in figures and tables' at the start of this volume.

Figure 4.2 Trends in police recorded domestic burglary, 1981 to 2008/09



1. New Counting Rules for recorded crime were introduced in 1998/99 and the NCRS was introduced in April 2002. Figures before and after these dates are not directly comparable.

Since 2007/08, the Home Office has been collecting supplementary data on the taking of vehicles during burglaries, often referred to as 'car key' burglaries. Data were received for 41 of the 44 police forces in England and Wales, and showed that, overall, seven per cent of burglaries in a dwelling in 2008/09 involved the taking of a vehicle, compared with six per cent in 2007/08. Previous analysis of the 2007/08 BCS also showed that car keys were stolen in nine per cent of incidents of burglary with entry.¹

Risks of becoming a victim of burglary

Overall, the risk of a household being a victim of burglary remained stable compared with the 2007/08 BCS, with 2.5 per cent of households interviewed in the 2008/09 BCS experiencing one or more domestic burglaries in the previous 12 months (1.5% were victims of burglary with entry and 1.0% were victims of attempts) (Table 2.03).

The BCS shows that the risk of becoming a victim of burglary varied by characteristics of the household and type of area (Figure 4.3 and Table 4.01).

For example, households where the Household Reference Person (HRP²) was young (for example, aged 16 to 24) had a higher risk of being burgled than households with an older HRP (7.2% had experienced a burglary in the previous 12 months compared with, for example, 0.9% of households where the HRP was aged 75 and over). Households where the HRP was a full-time student (6.7%) or where the HRP had never worked or was long-term unemployed (4.5%) were also generally more likely than average to have been a victim of burglary.

Tenure was also associated with risk of burglary, as households living in social and private rented accommodation (4.2% and 3.7% respectively) were at higher risk of being a victim of burglary than those in owner-occupied accommodation (1.7%). Households in areas where physical disorder was assessed³ as high were more likely to be victims of burglary (5.4%) than those in areas where it was not (2.2%).

In addition to these demographic and socio-economic factors, the level of home security remains an important factor in risk of burglary victimisation. Households with less than 'basic'⁴ home security measures were considerably more likely to have been victims of burglary (3.4%) than households with 'basic' and 'enhanced' home security measures (1.4% and 0.7% respectively) (Table 4.01). The 2008/09 BCS also shows that 87 per cent of households who had not been burgled in the previous 12 months had window locks, whereas in only 54 per cent of burglary incidents was the property fitted with window locks (Table 4.02).⁵

Previous analysis of the 2007/08 BCS (see Flatley *et al.*, 2009) has shown that the type of households who were least likely to have 'basic security' were generally the type of household that had a higher risk of burglary. It also showed that while the majority of households in England and Wales had their homes insured against theft (82%), the type of households that are least likely to have home contents insurance were also generally those with a higher than average risk of burglary.

¹ These figures can be found in the Crime in England and Wales 2007/08 Supplementary Tables.

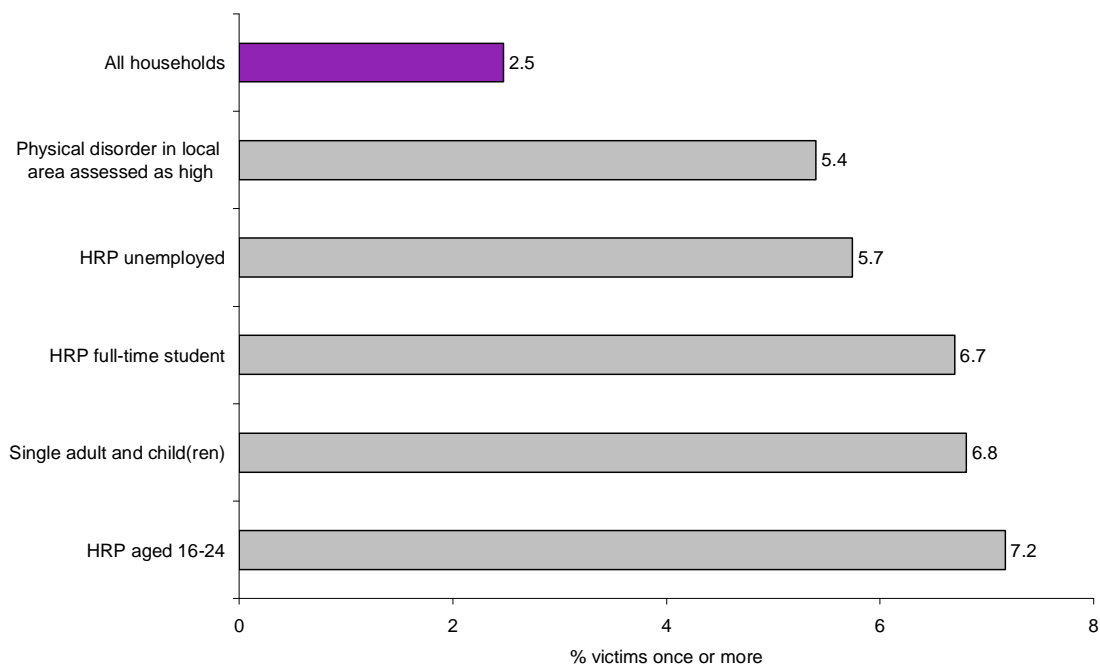
http://rds.homeoffice.gov.uk/rds/crimeew0708_tables_bvv.html. Updated analyses will be published in the Crime in England and Wales 2008/09 Supplementary Tables later this year.

² See Section 7 of Volume 2 for definition of household reference person (HRP).

³ As assessed by the BCS interviewer, see Section 7 of Volume 2 for more information.

⁴ 'Basic' home security refers to households fitted with window locks and double locks or deadlocks to outside doors. 'Enhanced' home security refers to households fitted with window locks and double locks or deadlocks, and additional security measures. See Section 7 of Volume 2 for more information.

⁵ Households that had been burgled in the previous 12 months were asked about security devices fitted at the time of the burglary incident. Households that had not been burgled were asked about security devices fitted at the time of the interview.

Figure 4.3 Households most at risk of burglary, 2008/09 BCS

Multivariate analysis (logistic regression) carried out on the 2008/09 BCS shows that after the influence of other characteristics is taken into account, the factors most strongly independently associated with higher risk of burglary are:

- having less than 'basic' home security;
- living in an urban area; and
- HRP not being aged 55 years or over.

The only other characteristic included in the model that was found to be (albeit weakly) independently associated with risk of burglary was household income. Overall, this model accounted for nine per cent of the variation in the risk of being a victim of burglary (data not shown).

4.4 VEHICLE OFFENCES

Extent and trends

The BCS only covers vehicle-related thefts against the household population and includes theft or unauthorised taking of a vehicle, theft from a motor vehicle and attempted vehicle thefts. Police recorded offences against vehicles cover both private and commercial vehicles and comprises: aggravated vehicle taking; theft or attempted theft of a vehicle; theft or attempted theft from a vehicle; and interfering with a motor vehicle (see Section 5 of Volume 2).

The 2008/09 BCS shows there has been no change in levels of vehicle-related thefts compared with the previous year, while the number of police recorded offences against vehicles fell between 2007/08 and 2008/09 (Tables 2.01 and 2.04).

- There were 1,514,000 vehicle-related thefts as measured by the 2008/09 BCS, a similar level to the 2007/08 BCS.
- Within the individual BCS categories of vehicle-related theft, the number of thefts of vehicles, thefts from vehicles, and attempted thefts of and from vehicles also remained stable between the 2007/08 and 2008/09 surveys.

The BCS and police recorded crime have generally shown similar trends over time with substantial falls in vehicle-related theft since the peaks in the mid-1990s (Figures 4.4 and 4.5, Tables 2.01 and 2.04).

- After increasing since the first BCS results in 1981 to a peak in the mid-1990s, the number of vehicle-related thefts has shown a considerable decline and since 1995 it has fallen by 65 per cent. Since 1995, the number of offences in each of the individual vehicle-related theft categories has more than halved.
- The number of police recorded offences against vehicles fell by ten per cent in the last year to 592,117 offences in 2008/09. This fall represents a continuing downward trend over recent years. Altogether recorded offences against vehicles have fallen by 45 per cent since the introduction of the NCRS in 2002/03.

Between 2007/08 and 2008/09 there were the following falls in all the main sub-categories of offences against vehicles recorded by the police:

- fourteen per cent in thefts of motor vehicles;
- six per cent in aggravated vehicle taking;
- eight per cent in thefts from the vehicle; and
- twelve per cent in offences of interfering with a motor vehicle.

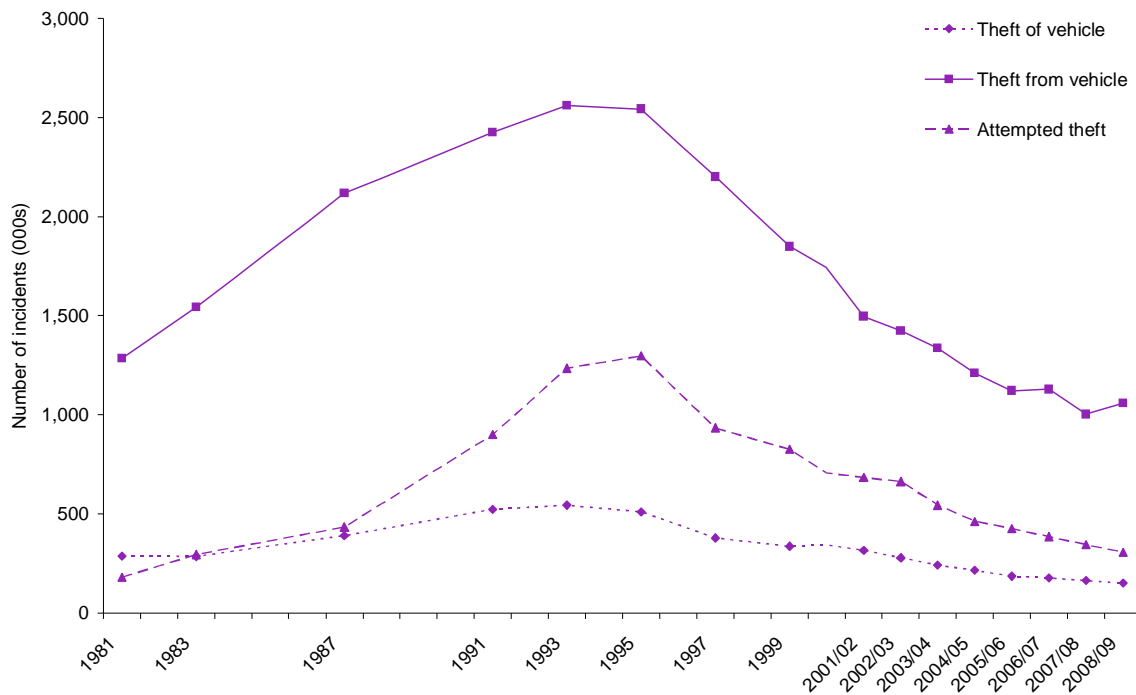
BCS interviews in 2008/09 indicate that reporting rates for vehicle-related thefts are similar to 2007/08; around half (45%) of vehicle-related thefts were reported to the police in 2008/09. Not surprisingly, thefts of vehicles were considerably more likely to be reported (89%) than thefts from vehicles (41%) (Table 2.09).

Longer-term trends from the BCS show that generally the proportion of vehicles fitted with security devices has steadily increased over time and that the majority of vehicles now have some form of security. For example, between 1991 and the 2008/09 BCS the proportion of 'main'⁶ cars with immobilisers has more than tripled (23% to 80%) and the proportion fitted with central locking has more than doubled (35% to 91%) (Table 4.03).⁷

⁶ 'Main' vehicle refers to the vehicle the household uses most often.

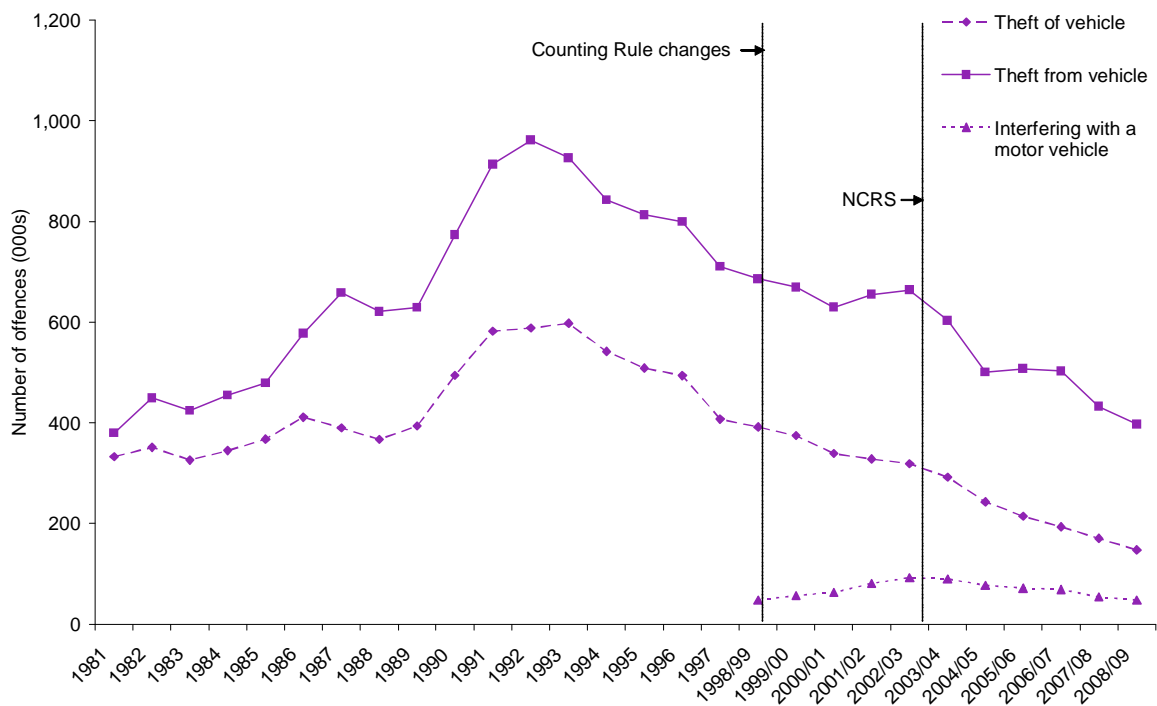
⁷ For trend figures for previous years (see Nicholas *et al.*, 2008).

Figure 4.4 Trends in vehicle-related theft, 1981 to 2008/09 BCS



1. For an explanation of year-labels, see 'Conventions used in figures and tables' at the start of this volume.

Figure 4.5 Trends in police recorded offences against vehicles, 1981 to 2008/09



1. New Counting Rules for recorded crime were introduced in 1998/99 and the NCRS was introduced in April 2002. Figures before and after these dates are not directly comparable.
 2. Interfering with a motor vehicle became a notifiable offence in 1998/99.

Risks of vehicle-related theft

Between the 2007/08 and 2008/09 BCS, there has been no change in the risk of being a victim of vehicle-related theft among vehicle-owning households. Based on the 2008/09 BCS, 6.4 per cent had experienced one or more vehicle-related thefts in the previous 12 months (Table 2.03).

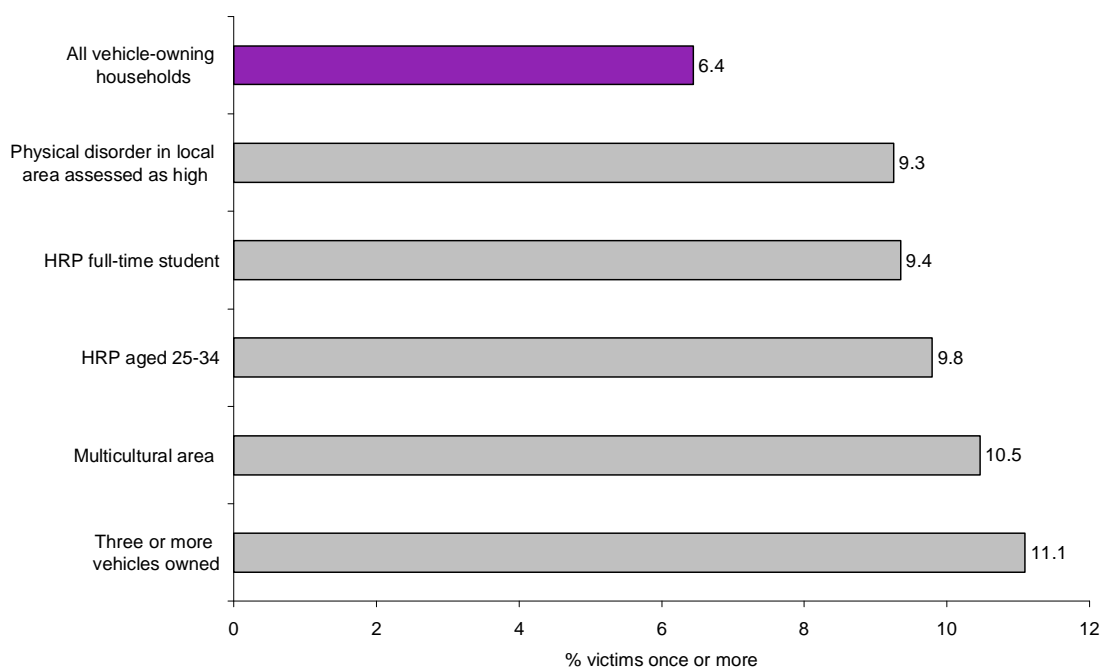
Across the vehicle-owning population there are considerable differences in the risk of experiencing vehicle-related theft (Figure 4.6 and Table 4.04).

- Households where the HRP was aged between 16 and 34 were more likely to have experienced vehicle-related theft than those where the HRP was aged 55 years and over (for example, HRP aged 25 to 34, 9.8%; HRP aged 75 and over, 1.8%).
- In general, vehicle-owners in OAC areas classified as Multicultural⁸ were more likely to have experienced vehicle-related theft (10.5%) than those in other area classifications, while those living in areas with a Countryside output area classification were less likely to have been a victim (3.6%).

As might be expected, another risk factor was the number of vehicles that a household owned. Overall, 11.1 per cent of households with three or more cars had been victims of vehicle-related theft, compared with 5.1 per cent of households owning one car, and 7.2 per cent owning two.

The 2008/09 BCS also indicates that vehicle security measures are effective in reducing the risk of vehicle theft. Although it is not possible to make direct comparisons⁹, compared with all 'main' household vehicles¹⁰, stolen vehicles were less likely to be fitted with security devices (Table 4.03). For example, 91 per cent of all vehicle-owning households reported that their 'main' car or van had central locking and 67 per cent reported that it had an alarm, whereas only 64 per cent of stolen cars/vans had central locking and 40 per cent had an alarm fitted.

Figure 4.6 Vehicle-owning households most at risk of vehicle-related theft, 2008/09 BCS



⁸ See Section 7 of Volume 2 for definitions of OAC.

⁹ The BCS asked vehicle-owning households (including those who had experienced vehicle theft) what security devices were fitted to their main vehicle at the time of interview. For every incident of theft from or of a vehicle, the BCS also asked victims what security devices were fitted at the time of the incident.

¹⁰ 'Main' vehicle refers to the vehicle the household uses most often.

4.5 OTHER THEFT OFFENCES

Extent and trends

The 'other' theft categories of the BCS cover theft from the person, other theft of personal property, other household thefts and bicycle theft. Police recorded crime also includes handling stolen goods and commercial thefts (see Section 5 of Volume 2).

Police recorded crime showed there was a 12 per cent fall in theft from the person offences compared with 2007/08 (Table 2.04). The 2008/09 BCS shows there was an increase in theft from the person of 25 per cent compared with the 2007/08 BCS, to an estimated 725,000 thefts. Of these, 86 per cent were stealth thefts, which are thefts directly from the person of the victim of which the victim is unaware (for example, pick-pocketing), and 14 per cent were snatch thefts where the property is snatched from the victim and the victim is aware of the incident (Table 2.01).

The 2008/09 BCS shows that the reporting rate for theft from the person fell from 32 per cent to 30 per cent compared with the previous year (Table 2.09). However, this fall in reporting cannot fully account for the difference between trends in police recorded crime and the BCS. This difference is more marked than in previous years but the two series have shown differences in trends over time. Since 2002/03 police recorded crime has shown a substantial decline in thefts from the person, while the number of incidents as measured by the BCS remained relatively stable before increasing between the 2007/08 and 2008/09 surveys.

The number of police recorded bicycle thefts remained stable between 2007/08 and 2008/09 (Table 2.04), but the BCS shows a 22 per cent rise in bicycle thefts, from 444,000 incidents in the 2007/08 survey to 540,000 incidents in the 2008/09 survey (Table 2.01). The 2008/09 BCS also estimates that 38 per cent of these thefts were reported to the police, a similar level to the 2007/08 BCS (Table 2.09). So once again the difference between the two sources cannot be explained by changes in reporting.

Initial analysis suggests that the increases seen in the BCS for both thefts from the person and bicycle thefts are concentrated in specific geographical regions and in particular London (data not shown). However, any rise in bicycle thefts in London should be seen in the context of increases in cycling in recent years (Transport for London, 2009).

The number of BCS other household thefts (for example, theft from a shed or garden) and other thefts of personal property (for example, theft of a handbag from the office) have remained stable in the past year, with 1,184,000 other household thefts and 1,096,000 other thefts of personal property in the 2008/09 BCS (Table 2.01). The 2008/09 BCS shows that the reporting of other theft of personal property increased from 30 per cent to 33 per cent, while the reporting rate for other household thefts (25%) remained stable compared with the 2007/08 BCS (Table 2.09).

Longer-term trends generally show that across the individual categories of other theft offences, the number of offences increased from 1981 before peaking in the mid-1990s, since then they have fallen and are now considerably lower than in 1995. Between 1995 and BCS interviews in 2008/09 other household thefts and other thefts of personal property have fallen by 48 per cent and 47 per cent respectively, while bicycle thefts have fallen by 20 per cent. However, the recent increase in thefts from the person means the level of this type of theft is now similar to the level found in 1995 (Table 2.01).

Police recorded crime saw a rise of ten per cent in the number of shoplifting offences compared with 2007/08, following a one per cent fall in the previous year. These figures give an indication of an increase in the level of shoplifting, but shoplifting recorded by the police does heavily depend on the success of retailers in apprehending suspects and the extent to which they report them to the police (Table 2.04).

Other Home Office surveys have previously been undertaken to capture the extent and costs of crime to the retail and manufacturing sector, for example, the 2002 Commercial Victimization Survey (see Shury *et al.*, 2005). The Home Office has commissioned a scoping study with a view to conducting a survey of business crime in the future.

Risks of theft from the person

The 2008/09 BCS shows that while there has been an increase in the number of thefts from the person in England and Wales, the risk of being a victim of this offence has remained stable compared with the 2007/08 BCS, with 1.5 per cent of adults being a victim at least once in the previous 12 months (Table 2.03).

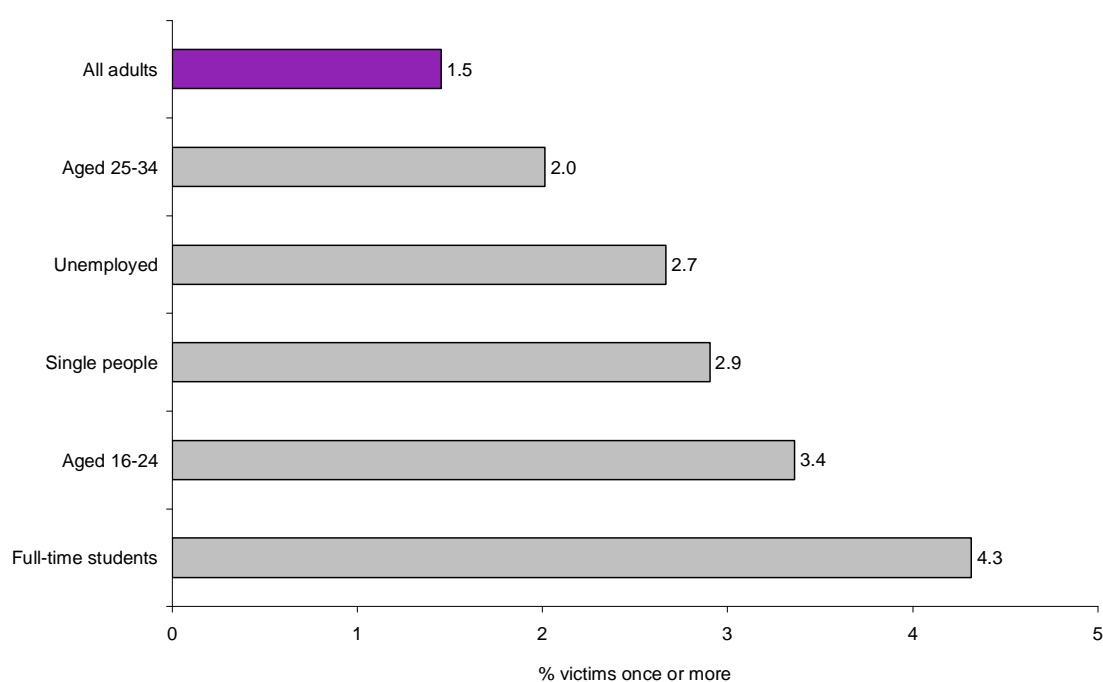
This rise in incidents but not in risk is partly due to an increase in the proportion of incidents accounted for by repeat victims, increasing from 12 per cent in the 2007/08 BCS to 19 per cent in the 2008/09 BCS (Table 2.08).

The risk of becoming a victim of theft from the person also varies by personal characteristics (Figure 4.7 and Table 4.05). For example, women were more likely to be victimised than men (1.9% compared with 1.0%).

Risk factors relating to theft from the person are particularly likely to reflect differences in personal and lifestyle characteristics, and therefore exposure to risk. Young people are considerably more likely to be a victim than older people, while other characteristics linked to age, such as being a student and marital status, are also associated with risk of being a victim. For example:

- Both men and women aged 16 to 24 were at least twice as likely to have been victimised (2.8% and 3.9% respectively) than men and women in older age groups (for example, 0.6% of men and 1.9% of women aged 75 and over).
- Full-time students were more than twice as likely to be a victim of theft from the person (4.3%) than all adults on average (1.5%).

Figure 4.7 Adults most at risk of theft from the person, 2008/09 BCS



4.6 CRIMINAL DAMAGE AND VANDALISM

Extent and trends

The BCS covers vandalism to household property and provides separate estimates for vehicle vandalism and vandalism to the home or other property (see Section 5 of Volume 2). The BCS longer-term trends show that the number of vandalism incidents increased after the first survey results for 1981 to reach a peak in 1995, since then it has decreased by 18 per cent. There was no change in the number of incidents of vandalism estimated by the 2007/08 and 2008/09 surveys (Table 2.01).

There were 2,769,000 offences of vandalism against domestic property as measured by BCS interviews in 2008/09. Of these, 1,843,000 were against vehicles and 926,000 against other domestic property, such as a dwelling or surrounding property.

Police recorded criminal damage offences¹¹ cover damage to domestic and non-domestic properties (see Section 5 of Volume 2). Between 2007/08 and 2008/09, recorded crime figures, which include non-domestic property and vehicles, showed a decline of ten per cent in the number of criminal damage offences. Of the 936,729 criminal damage offences recorded in 2008/09, 42 per cent were to a vehicle, 25 per cent to a dwelling and 12 per cent to a building other than a dwelling, such as commercial premises and bus shelters (Table 2.04).

Arson offences account for four per cent of all police recorded criminal damage offences and the number of arson offences fell by 11 per cent from 39,319 offences in 2007/08 to 34,841 offences in 2008/09.¹²

The 2008/09 BCS estimated that only a third of incidents of vandalism were reported to the police (33%), no change from the 2007/08 survey (Table 2.09).

Risks of vandalism

BCS interviews for 2008/09 indicate that 7.6 per cent of households had experienced some form of vandalism in the previous 12 months and risk of victimisation has remained stable compared with 2007/08. The risk of victimisation was 7.0 per cent for vehicle vandalism (based on vehicle-owning households) and 2.5 per cent for vandalism to the home or other property (Table 2.03).

According to the 2008/09 BCS, among all the main crime types, victims of vandalism were the most likely to experience repeat victimisation; 28 per cent of victims had experienced vandalism more than once in the previous 12 months, a similar level to that found in the 2007/08 BCS (Table 2.07).

Vehicle vandalism (vehicle-owning households only)

There were considerable differences across vehicle-owning households in the risk of being a victim of vehicle vandalism (Figure 4.8 and Table 4.06). Households that were living in more deprived circumstances were more likely to have had their vehicle vandalised. For example:

- Households located in the 20 per cent most deprived areas were more likely to be a victim of vehicle vandalism (10.6%) than those living in less deprived areas (20% least deprived areas, 5.5%).
- The risk of being a victim was higher for households in areas where physical disorder was assessed¹³ as high (12.3%) compared with areas where it was not (6.8%).

¹¹ BCS vandalism equates to the police recorded category of criminal damage.

¹² Within the BCS, arson is included within vandalism to other property and includes deliberate damage to vehicles caused by fire.

¹³ As assessed by the BCS interviewer, see Section 7 of Volume 2 for more information.

- Households living in terraced houses were more likely to have experienced vehicle vandalism (10%) compared with those living in other types of accommodation (for example, detached houses, 4%). This difference is partly explained by parking availability with those living in detached houses more likely to have off-street parking.

Figure 4.8 Vehicle-owning households most at risk of vehicle vandalism, 2008/09 BCS

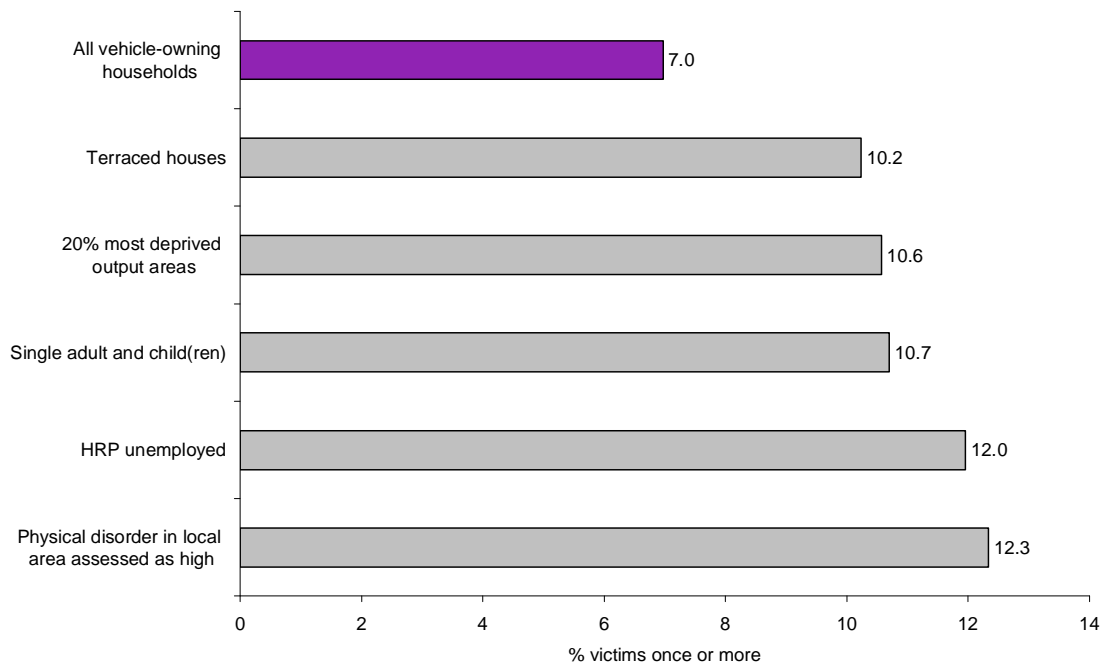
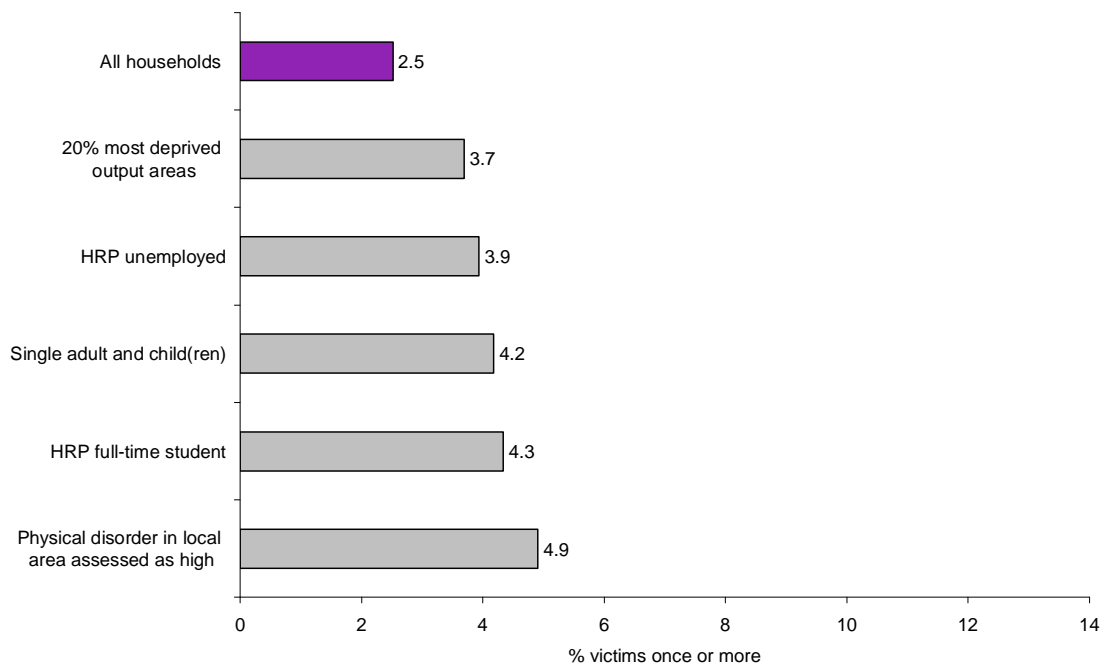


Figure 4.9 Households most at risk of vandalism to the home or other property, 2008/09 BCS



Vandalism to the home or other property

In general, the characteristics associated with higher risk of vehicle vandalism, were also associated with higher risk of being a victim of vandalism to the home or other property. For example:

- The risk of being a victim of vandalism to the home or other property was higher among those living in the 20 per cent most deprived areas (3.7%) than those living in less deprived areas (20% least deprived areas, 2.2%).
- Households living in terraced houses (3.3%) had a higher risk of being a victim of vandalism to the home or other property than households living in other types of accommodation (for example, flats or maisonettes, 1.9%).

4.7 FRAUD AND FORGERY

Introduction

The measurement of fraud is challenging as fraud is known to be very substantially underreported to the police. Better information can be derived from other sources; for more information on the various sources of fraud including administrative data, and on the nature, extent and economic impact of fraud in the UK, see (Hoare, 2007), Levi *et al.* (2007) and Wilson *et al.* (2006).

Overall, the number of fraud and forgery offences recorded by the police in 2008/09 was 163,283, an increase of five per cent compared with 2007/08 (Table 2.04). The fraud and forgery figures for 2007/08 and 2008/09 are not comparable to previous years due to changes in 2007 to the measurement of fraud by the police (see Section 5 of Volume 2).

This section focuses on plastic card fraud offences identified by The UK Card Association, along with findings from the BCS. The BCS provides a measure of plastic card fraud among adults resident in households, which is important as it allows us to capture unreported incidents. However, there are difficulties with using surveys to estimate the extent of other types of fraud, as respondents might not be aware that the deception has taken place.

Plastic card fraud

Stolen plastic cards (i.e. credit, debit or bank cards) are included in the main BCS crime count under the relevant offence, such as burglary or theft from the person, but incidents of fraud are not covered. However, the BCS has included questions on experience of plastic card fraud in a separate module of questions since 2005/06.¹⁴

The 2008/09 BCS shows there has been an increase in plastic card fraud, with 6.4 per cent of plastic card users being aware that their cards had been fraudulently used in the previous 12 months, compared with 4.7 per cent of card users in the six months to March 2008.¹⁵ This is also a rise from 3.7 per cent in 2005/06 when questions on plastic card fraud were first added to the BCS (Table 4a). It is also considerably higher than the risk of victimisation for other types of theft, for example, 1.5 per cent had been a victim of theft from the person in the 2008/09 BCS (Table 2.03).

¹⁴ There are 6 months of data for 2007/08 as the plastic card fraud questions were only included in the second half of the 2007/08 BCS year.

¹⁵ To check for the possibility of seasonality effects, further analysis was undertaken which shows that the prevalence of plastic card fraud for the last six months of the 2008/09 BCS was the same as for the full year (both 6%).

Table 4a Proportion of plastic card users who had been a victim of plastic card fraud in the last year, 2005/06 to 2008/09 BCS

Percentages					BCS
	2005/06	2006/07	2007/08 ¹	2008/09	Statistically significant change, 2007/08 to 2008/09
Plastic card fraud	3.7	3.7	4.7	6.4	**
<i>Unweighted base</i> ²	9,112	9,791	19,076	41,054	

1. Plastic card fraud questions were only included from the second half of the 2007/08 BCS year, so the figure for 2007/08 is based on six months' data.

2. Based on plastic card users.

In April 2009 The UK Cards Association was launched as the leading trade association for the cards industry in the UK and took over from APACS the responsibility for recording information on the financial losses resulting from plastic card fraud in the UK¹⁶ (Tables 4b and 4c). Data provided by The UK Cards Association are not produced by the Government Statistical Service and are not National Statistics, but they do provide a good source of information on levels of plastic card fraud within the UK.

- There were 2.8 million fraudulent transactions on UK-issued cards recorded in the UK in 2008, an increase of four per cent from 2007 (2.7 million).¹⁷
- The total losses from plastic card fraud on UK-issued cards reported by The UK Cards Association in 2008 were £609.9 million, an increase of 14 per cent from 2007 (£535.2 million).

Table 4b Annual plastic card fraud transactions for UK-issued cards, 2007 to 2008

Numbers and percentage changes	The UK Cards Association		
	Number of fraudulent transactions		
Fraud type	2007	2008	% change 2007 to 2008
<i>Count (thousands):</i>			
Card-not-present	2,014	2,165	8
Counterfeit card	224	231	3
Lost and stolen	321	274	-15
Mail non-receipt	43	39	-10
Card ID theft: Account take-over	48	64	34
Card ID theft: Third-party application fraud	59	37	-38
Subtotal: UK fraud	2,709	2,810	4

1. Source: The UK Cards Association

Around a third of UK-issued plastic card fraud took place abroad. The main area of fraud was on UK transactions not protected by 'chip and PIN', specifically use of stolen card details in non-face-to-face transactions either on the internet, by phone and or by mail order (see Table 4b). Losses from this fraud type in 2008 were up by 13 per cent since 2007. Card-not-present fraud has been the largest type of card fraud in the UK for the past six years (Table 4c). However, the losses should be seen in the context of large increases in shopping online and over the phone. From 2001 to 2008, losses from card-not-present fraud rose by 243 per cent while the total value of online shopping alone increased by 524 per cent.

¹⁶ Breakdowns of the figures for England and Wales are not available.

¹⁷ Data on fraudulent transactions have only been produced for the Home Office from 2006 onwards, so long-term trends are not available. Longer-term trends are available for losses from plastic card fraud.

Counterfeit card fraud occurs when criminals use an illegal copy of a genuine credit or debit card. Losses from this fraud type were up by 18 per cent from 2007. The majority of this fraud type occurs abroad with UK card details stolen for use in countries yet to upgrade to 'chip and PIN' technology. Lost or stolen card fraud has decreased by four per cent since 2007, which is thought to be related to the roll-out of 'chip and PIN'.

Card ID theft occurs when a criminal uses a fraudulently obtained card or card details, along with stolen personal information, to open or take over a card account in someone else's name. Card ID theft was up by 39 per cent from 2007. Mail non-receipt fraud, which involves cards being stolen before they are delivered to the cardholder, remained at the same level as the previous year.

Table 4c Annual plastic card fraud losses for UK-issued cards, 2001 to 2008

Loss (£ millions) and percentage changes	The UK Cards Association								
	2001	2002	2003	2004	2005	2006	2007	2008	% change 2007 to 2008
Fraud type									
Card not present	95.7	110.1	122.1	150.8	183.2	212.7	290.5	328.4	13
Counterfeit card	160.4	148.5	110.6	129.7	96.8	98.6	144.3	169.8	18
Lost and stolen	114.0	108.3	112.4	114.5	89.0	68.5	56.2	54.1	-4
Card ID theft	14.6	20.6	30.2	36.9	30.5	31.9	34.1	47.4	39
Mail non-receipt	26.8	37.1	45.1	72.9	40.0	15.4	10.2	10.2	0
Total	411.5	424.6	420.4	504.8	439.4	427.0	535.2	609.9	14
<i>of which:</i>									
UK retailer (face-to-face)	188.9	186.9	177.9	218.8	135.9	72.1	73.0	98.5	35
Domestic/international split of total losses:									
UK fraud	273.0	294.4	316.3	412.3	356.6	309.9	327.6	379.7	16
Fraud abroad	138.4	130.2	104.1	92.5	82.8	117.1	207.6	230.1	11

1. Source: The UK Cards Association 'Fraud: The Facts 2009' published in March 2009.

2. Losses include fraud that occurs in the UK and abroad.

4.8 DRUG OFFENCES

Police recorded drug offences increased by six per cent compared with 2007/08, following an increase of 18 per cent between 2006/07 and 2007/08. Increases in recent years have been largely attributable to increases in the recording of possession of cannabis offences which account for 69 per cent of all recorded drug offences. In 2008/09 possession of cannabis increased by six per cent compared with 2007/08. This increase continues an upward trend in recent years, with possession of cannabis offences recorded by the police rising by 90 per cent since 2004/05 (Table 2.04). This rise has been largely associated with the increased use of powers to issue cannabis warnings.

The BCS is also used to monitor trends in drug use and the figures are published annually. The BCS shows that overall illicit drug use among 16 to 59 year olds decreased from 11.1 per cent in 1996 to 9.3 per cent in 2007/08 and it is now at its lowest level since the BCS started measurement. This decrease is mainly due to successive declines in use of cannabis since 2003/04 (Hoare and Flatley, 2008).¹⁸ This suggests the increase seen in recent years in police recorded drug offences is likely to be due to increase in police activity rather than in drug use.

The recorded crime figures for possession and trafficking when compared with those from the BCS for drug use can be seen to significantly understate the true extent of offending in those areas. The statistics will also be heavily influenced by local policing priorities in response to local drug problems, and may reflect changes in the policing of drug crime, such as the use of cannabis warnings, rather than real changes in its incidence.

¹⁸ The figures will be updated shortly with the findings from the 2008/09 BCS, see Hoare (2009, forthcoming).

Table 4.01 Proportion of households that were victims of burglary by household and area characteristics

Percentages					2008/09 BCS			
	Burglary	Burglary with entry	Attempted burglary	Unweighted base	Burglary	Burglary with entry	Attempted burglary	Unweighted base
ALL HOUSEHOLDS	2.5	1.5	1.0	46,252				
Sex of household reference person								
Male	2.2	1.4	0.8	28,595				
Female	3.0	1.8	1.3	17,657				
Age of household reference person								
16-24	7.2	4.9	2.6	1,515				
25-34	4.0	2.4	1.7	5,825				
35-44	3.0	1.8	1.3	9,311				
45-54	2.2	1.3	0.9	8,785				
55-64	1.8	1.2	0.6	8,302				
65-74	1.2	0.7	0.6	6,507				
75+	0.9	0.7	0.2	5,916				
Structure of household								
Single adult & child(ren)	6.8	4.3	2.8	2,382				
Adults & child(ren)	2.6	1.6	1.0	10,257				
Adult(s) & no children	2.1	1.3	0.9	33,613				
Household reference person's employment status								
In employment	2.5	1.5	1.1	27,972				
Unemployed	5.7	4.3	1.7	799				
Economically inactive	2.2	1.5	0.8	17,362				
<i>Student</i>	6.3	4.7	1.7	421				
<i>Looking after family/home</i>	5.8	3.5	2.4	1,540				
<i>Long-term/temporarily sick/ill</i>	4.6	2.8	1.8	2,003				
<i>Retired</i>	1.2	0.8	0.4	12,981				
<i>Other inactive</i>	3.6	3.1	1.4	417				
Household reference person's occupation								
Managerial and professional occupations	2.1	1.4	0.7	17,198				
Intermediate occupations	2.0	1.0	1.0	9,370				
Routine and manual occupations	2.7	1.6	1.2	17,329				
Never worked and long-term unemployed	4.5	3.1	1.8	1,222				
Full-time students	6.7	5.5	1.6	724				
Not classified	2.0	1.6	0.4	408				
Total household income								
Less than £10,000	3.5	2.3	1.3	6,917				
£10,000 less than £20,000	2.3	1.4	0.9	8,241				
£20,000 less than £30,000	2.4	1.1	1.3	6,274				
£30,000 less than £40,000	1.8	1.0	0.8	4,886				
£40,000 less than £50,000	2.2	1.3	1.0	3,675				
£50,000 or more	2.7	1.7	1.0	5,889				
Tenure								
Owner occupiers	1.7	1.1	0.7	32,279				
Social renters	4.2	2.5	1.9	7,531				
Private renters	3.7	2.4	1.4	6,265				
					Accommodation type			
					Houses	2.2	1.4	0.9
					<i>Detached</i>	1.7	1.1	0.6
					<i>Semi-detached</i>	2.0	1.3	0.8
					<i>Terraced</i>	2.9	1.8	1.2
					Flats/maisonettes	3.6	2.0	1.8
					Other accommodation	0.0	0.0	0.0
								222
					Output area classification			
					Blue collar communities	2.9	1.6	1.2
					City living	3.3	2.0	1.4
					Countryside	1.0	0.6	0.4
					Prospering suburbs	1.7	1.0	0.7
					Constrained by circumstances	3.3	2.0	1.3
					Typical traits	2.1	1.3	0.9
					Multicultural	4.0	2.7	1.5
								3,521
					Area type			
					Urban	2.8	1.8	1.2
					Rural	1.1	0.7	0.4
								34,327
								11,925
					Level of physical disorder			
					High	5.4	3.1	2.3
					Not high	2.2	1.4	0.9
								2,506
								42,195
					Living environment deprivation index			
					20% most deprived output areas	3.8	2.3	1.6
					Other output areas	2.2	1.4	0.9
					20% least deprived output areas	2.0	1.2	0.9
								7,833
								25,587
								8,691
					Level of home security			
					No or less than basic security	3.4	2.1	1.4
					Basic security	1.4	0.8	0.6
					Enhanced security	0.7	0.5	0.2
								2,972
								1,148
								7,296
					Hours home left unoccupied on an average day			
					Never	2.1	1.6	0.6
					Less than 3 hours	2.0	1.3	0.8
					3 hours less than 5 hours	2.9	1.8	1.2
					5 hours or longer	2.8	1.6	1.2
								5,259
								14,869
								8,554
								17,455
					Number of years at address			
					Less than 1 year	4.6	3.0	1.9
					1 year less than 2 years	3.1	1.9	1.2
					2 years less than 5 years	2.9	1.7	1.3
					5 years less than 10 years	2.6	1.6	1.1
					10 years or longer	1.7	1.0	0.6
								4,068
								3,409
								8,227
								8,158
								22,388

1. See Section 7 of Volume 2 for definitions of household and area characteristics.

Table 4.02 Ownership of home security measures among households that were victims of burglary and non-victimised households

Percentages	Burglary incidents ¹			2008/09 BCS
	Burglary	Burglary with entry	Attempted burglary	Not a burglary victim ²
Burglar alarm	33	30	38	30
Double/deadlocks	58	56	61	82
Outdoor sensor/timer lights	22	20	24	47
Indoor sensor/timer lights	13	13	12	27
Window locks	54	54	54	87
Window bar/grilles	4	3	4	2
Security chains on door	30	26	36	37
CCTV camera	4	2	6	5
Any of these security devices	96	94	97	98
<i>Unweighted base</i> ³	677	393	284	11,197

1. The figures are based on all incidents of burglary in the previous 12 months and are based on what security measures were in place at the time of the burglary.

2. The figures are based on all households that were asked about home security measures in the 2008/09 BCS but were not victims of any burglary. They were asked what security measures were in place at the time of the interview.

3. Base given is for 'double/deadlocks', bases for all other security precautions will be higher.

4. Figures add to more than 100 as more than one response possible.

5. Figures are not comparable with previous years' estimates, which were incorrectly calculated.

Table 4.03 Vehicle security precautions on vehicles targeted in theft and on all main household vehicles

Percentages	Vehicle-related theft incidents ¹				2008/09 BCS
	Theft of and from vehicles	Theft of vehicle	Theft from vehicle	Attempted theft	All main vehicles ²
Car alarm	51	40	52	53	67
Central locking	81	64	84	70	91
Any immobiliser	65	53	67	75	80
- Electronic	54	44	56	61	71
- Mechanical	26	17	27	36	29
Tracking device	2	1	2	2	5
Window security etching	47	53	45	50	49
<i>Unweighted base</i> ³	782	126	656	248	8,014
Audio security	77	77	77	76	77
Removable stereo	46	46	46	49	37
Security PIN number	55	58	55	55	62
<i>Unweighted base</i> ⁴	789	124	665	236	8,107

1. The figures for vehicle-related theft incidents are based on all cars or light vans subject to vehicle theft (including attempts) in the previous 12 months and are based on what security measures were in place at the time of the theft or attempted theft.

2. The figures are based on all main cars/light vans (including those involved in thefts) within vehicle-owning households in 2008/09 and are based on what security measures were in place at the time of interview.

3. Base given is for 'window security etching', bases for all other security precautions will be higher.

4. For both vehicle-related theft incidents and all main vehicles the figures for audio security are based on all cars or light vans with radio/cassette/CD. Base given is for 'security PIN number', bases for all other security precautions will be higher.

5. Figures add to more than 100 as more than one response possible.

Table 4.04 Proportion of households that were victims of vehicle-related theft by household and area characteristics

Percentages					2008/09 BCS					
	Vehicle-related theft	Theft of vehicle	Theft from vehicle	Attempted theft	Unweighted base	Vehicle-related theft	Theft of vehicle	Theft from vehicle	Attempted theft	Unweighted base
ALL HOUSEHOLDS	6.4	0.7	4.6	1.4	36,882					
Sex of household reference person						Accommodation type				
Male	6.3	0.6	4.6	1.4	25,093	Houses	6.3	0.7	4.5	1.4
Female	6.7	1.0	4.6	1.3	11,789	<i>Detached</i>	4.7	0.5	3.6	0.8
						<i>Semi-detached</i>	6.1	0.7	4.3	1.4
						<i>Terraced</i>	8.1	0.9	5.6	1.9
						Flats/maisonettes	8.3	1.0	5.8	1.6
						Other accommodation	2.2	0.4	1.1	1.2
Age of household reference person						Output area classification				
16-24	8.7	0.8	6.8	1.6	890	Blue collar communities	7.2	1.2	4.7	1.6
25-34	9.8	1.1	7.2	1.8	4,677	City living	8.7	0.7	6.8	1.7
35-44	7.2	1.0	5.1	1.4	8,169	Countryside	3.6	0.4	2.6	0.6
45-54	7.8	0.9	5.3	2.0	7,727	Prospering suburbs	4.4	0.2	3.4	0.9
55-64	5.1	0.4	3.9	0.9	7,136	Constrained by circumstances	7.7	1.1	5.0	1.8
65-74	3.2	0.3	2.3	0.8	5,104	Typical traits	6.9	0.9	5.0	1.4
75+	1.8	0.2	1.1	0.5	3,110	Multicultural	10.5	1.0	7.5	2.6
Structure of household						Area type				
Single adult & child(ren)	8.7	1.1	6.3	1.5	1,434	Urban	7.2	0.8	5.1	1.6
Adults & child(ren)	7.7	1.0	5.6	1.5	9,470	Rural	4.0	0.5	3.0	0.6
Adult(s) & no children	5.9	0.6	4.2	1.3	25,978					
Household reference person's employment status						Level of physical disorder				
In employment	7.5	0.8	5.4	1.6	25,420	High	9.3	1.5	6.4	2.1
Unemployed	7.4	2.5	4.4	1.1	425	Not high	6.3	0.7	4.5	1.4
Economically inactive	3.7	0.4	2.6	0.8	10,962					
<i>Student</i>	10.1	1.7	7.2	2.1	242	Living environment deprivation index				
<i>Looking after family/home</i>	7.2	0.9	5.8	0.6	785	20% most deprived output areas	8.6	1.4	5.4	2.2
<i>Long-term/temporarily sick/ill</i>	7.4	1.0	5.2	1.5	1,027	Other output areas	6.4	0.7	4.7	1.3
<i>Retired</i>	2.5	0.3	1.7	0.6	8,680	20% least deprived output areas	5.5	0.6	3.9	1.2
<i>Other inactive</i>	8.9	1.3	5.9	2.2	228					
Household reference person's occupation						Number of cars owned by household				
Managerial and professional occupations	6.6	0.6	5.1	1.1	15,604	None	n/a	n/a	n/a	n/a
Intermediate occupations	6.6	0.9	4.6	1.5	7,971	One	5.1	0.6	3.5	1.1
Routine and manual occupations	8.0	0.8	3.9	1.6	12,034	Two	7.2	0.6	5.3	1.6
Never worked and long-term unemployed	4.1	1.2	2.3	0.6	492	Three or more	11.1	1.4	8.1	2.4
Full-time students	9.4	1.7	6.3	1.8	475					
Not classified	7.8	0.8	6.0	1.1	306					
Total household income										
Less than £10,000	5.4	0.7	3.5	1.5	3,135					
£10,000 less than £20,000	5.1	0.7	3.4	1.2	6,202					
£20,000 less than £30,000	5.8	0.8	4.0	1.3	5,656					
£30,000 less than £40,000	7.2	0.7	5.2	1.6	4,589					
£40,000 less than £50,000	7.6	0.7	6.0	1.1	3,544					
£50,000 or more	8.9	0.8	6.8	1.7	5,729					
Tenure										
Owner occupiers	5.8	0.6	4.3	1.2	28,644					
Social renters	7.9	1.5	4.9	1.8	3,526					
Private renters	8.5	0.8	6.2	1.7	4,578					

1. Based on vehicle-owning households.

2. See Section 7 of Volume 2 for definitions of household and area characteristics.

Table 4.05 Proportion of adults who were victims of theft from the person by personal characteristics

Percentages			2008/09 BCS	
	Theft from person	Unweighted base	Theft from person	Unweighted base
ALL ADULTS	1.5	46,220		
Age			Respondent's employment status	
16-24	3.4	3,850	In employment	1.4
25-34	2.0	6,428	Unemployed	2.7
35-44	0.9	8,706	Economically inactive	1.5
45-54	0.9	7,457	Student	3.0
55-64	0.8	7,825	Looking after family/home	2.0
65-74	0.7	6,297	Long-term/temporarily sick/ill	2.1
75+	1.4	5,657	Retired	1.0
			Other inactive	1.1
Men	1.0	20,826	Respondent's occupation	
16-24	2.8	1,785	Managerial and professional occupations	1.4
25-34	1.5	2,787	Intermediate occupations	0.9
35-44	0.6	3,997	Routine and manual occupations	1.2
45-54	0.5	3,548	Never worked and long-term unemployed	1.6
55-64	0.4	3,577	Full-time students	4.3
65-74	0.2	2,898	Not classified	3.3
75+	0.6	2,234		
Women	1.9	25,394	Highest qualification	
16-24	3.9	2,065	Degree or diploma	1.6
25-34	2.5	3,641	Apprenticeship or A/AS level	1.6
35-44	1.2	4,709	O level/GCSE	1.6
45-54	1.3	3,909	Other	1.2
55-64	1.1	4,248	None	1.0
65-74	1.2	3,399		
75+	1.9	3,423	Long-standing illness or disability	
			Long-standing illness or disability	1.5
			Limits activities	1.7
			Does not limit activities	1.2
			No long-standing illness or disability	1.4
Ethnic group			Hours out of home on an average weekday	
White	1.4	42,872	Less than 3 hours	1.3
Non-White	2.0	3,338	3 hours less than 7 hours	1.5
Mixed	4.0	287	7 hours or longer	1.5
Asian or Asian British	1.6	1,559		
Black or Black British	1.8	1,000	Number of visits to bar in the evening in the last month	
Chinese or other	2.6	492	None	1.3
			Less than once a week	1.5
Marital status			Once a week or more often	1.7
Married	0.8	21,671		
Cohabiting	1.6	4,154		
Single	2.9	9,394		
Separated	1.4	1,419		
Divorced	1.2	4,164		
Widowed	1.6	5,397		

1. See Section 7 of Volume 2 for definitions of personal characteristics.

Table 4.06 Proportion of households that were victims of vandalism by household and area characteristics

Percentages					2008/09 BCS				
	Vandalism	Vehicle vandalism	Vandalism to home and other property	Unweighted base		Vandalism	Vehicle vandalism	Vandalism to home and other property	Unweighted base
ALL HOUSEHOLDS	7.6	7.0	2.5	46,252	Accommodation type				
					Houses	8.0	6.9	2.6	39,026
Sex of household reference person					Detached	5.3	3.8	2.0	12,025
Male	7.9	6.9	2.4	28,595	Semi-detached	7.6	6.7	2.5	14,588
Female	7.1	7.1	2.8	17,657	Terraced	10.5	10.2	3.3	12,413
Age of household reference person					Flats/maisonettes	6.1	8.4	1.9	5,467
16-24	8.3	9.7	2.8	1,515	Other accommodation	6.4	7.5	1.9	222
25-34	9.7	9.6	2.9	5,825	Output area classification				
35-44	10.0	8.7	3.0	9,311	Blue collar communities	8.6	8.0	3.4	7,519
45-54	9.1	7.7	2.8	8,785	City living	6.7	7.6	2.1	1,997
55-64	7.6	6.3	2.6	8,302	Countryside	4.0	3.3	1.1	6,937
65-74	4.4	3.4	2.0	6,507	Prospering suburbs	5.3	4.2	1.7	10,519
75+	2.1	1.6	1.3	5,916	Constrained by circumstances	9.0	10.2	3.6	4,358
Structure of household					Typical traits	9.3	8.6	2.5	9,121
Single adult & child(ren)	10.0	10.7	4.2	2,382	Multicultural	7.2	9.1	2.1	3,521
Adults & child(ren)	9.7	8.2	2.9	10,257	Area type				
Adult(s) & no children	6.8	6.3	2.3	33,613	Urban	8.2	7.8	2.7	34,327
Household reference person's employment status					Rural	5.3	4.4	1.6	11,925
In employment	9.1	7.9	2.5	27,972	Level of physical disorder				
Unemployed	9.6	12.0	3.9	799	High	11.5	12.3	4.9	2,506
Economically inactive	4.9	4.4	2.4	17,362	Not high	7.4	6.8	2.4	42,195
Student	6.8	6.0	3.9	421	Living environment deprivation index				
Looking after family/home	9.0	11.7	3.3	1,540	20% most deprived output areas	9.6	10.6	3.7	7,833
Long-term/temporarily sick/ill	9.6	10.6	4.6	2,003	Other output areas	7.4	6.7	2.3	25,587
Retired	3.4	2.7	1.8	12,981	20% least deprived output areas	6.7	5.5	2.2	8,691
Other inactive	6.5	6.4	4.8	417	Number of cars owned by household				
Household reference person's occupation					None	2.9	n/a	2.8	9,739
Managerial and professional occupations	8.2	6.9	2.5	17,198	One	8.2	6.2	2.5	19,474
Intermediate occupations	7.3	6.5	2.2	9,370	Two	9.3	7.6	2.2	13,234
Routine and manual occupations	7.2	7.1	2.6	17,329	Three or more	11.8	9.6	2.9	3,805
Never worked and long-term unemployed	5.4	7.2	2.8	1,222	Hours home left unoccupied on an average day				
Full-time students	9.7	9.6	4.3	724	Never	6.9	6.8	2.4	5,259
Not classified	7.2	8.0	2.4	408	Less than 3 hours	6.1	5.8	2.3	14,869
Total household income					3 hours less than 5 hours	7.7	6.6	2.7	8,554
Less than £10,000	6.0	6.9	3.2	6,917	5 hours or longer	8.9	8.0	2.6	17,455
£10,000 less than £20,000	6.8	5.9	2.7	8,241					
£20,000 less than £30,000	8.6	7.4	2.6	6,274					
£30,000 less than £40,000	8.8	7.7	2.4	4,886					
£40,000 less than £50,000	9.4	7.9	2.4	3,675					
£50,000 or more	10.2	8.2	2.9	5,889					
Tenure									
Owner occupiers	7.6	6.3	2.4	32,279					
Social renters	7.4	9.5	3.2	7,531					
Private renters	8.1	8.8	2.3	6,265					

1. Base given is for all households, bases for vehicle vandalism will be slightly lower as based on vehicle-owning households.

2. See Section 7 of Volume 2 for definitions of household and area characteristics.