



Home Office

BUILDING A SAFE, JUST AND TOLERANT SOCIETY

Home Office Statistical Bulletin

Police Service Strength

23/01

England and Wales, 30 September 2001

David Povey and Sonia Rundle

18 December 2001

The Research, Development and Statistics Directorate exists to improve policy making, decision taking and practice in support of the Home Office purpose and aims, to provide the public and Parliament with information necessary for informed debate and to publish information for future

Statistical Bulletins are produced by the Research, Development and Statistics Directorate. For further copies contact:

Communication & Development Unit
Room 201,
Home Office,
50 Queen Anne's Gate,
London
SW1H 9AT.

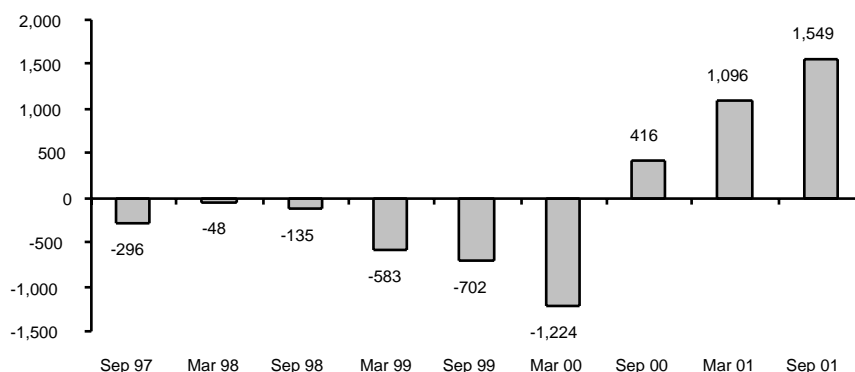
Tel: 020 7273 2084
Fax 020 7222 0211
publications.rds@homeoffice.gsi.gov.uk

© Crown Copyright 2000
ISSN 1358-510X

MAIN POINTS

- There were 127,231 police officers (full-time equivalents) in England and Wales on 30 September 2001. This is the largest number since February 1995. The increase of 2,645 or 2.1 per cent compared to a year earlier is the largest for 20 years.
- This total includes 2,261 officers seconded to the National Crime Squad, National Criminal Intelligence Service, central services and inter-force units.
- Forces recruited 9,020 officers over the latest 12 months, 69 per cent more than the previous year and the most since 1979. The wastage rate remains static at less than 5 per cent of strength, with 6,160 officers leaving over this period.
- There were 3,134 minority ethnic officers, 2.5 per cent of the total police strength. This is a rise of 10 per cent over the last year.

Figure 1: Total police officer strength (full-time equivalents)
Change in number of officers from the previous six months



1 POLICE OFFICER STRENGTH (Tables A, 1, 2, 3, 9; Figures 1, 2)

(a) On 30 September 2001, total police service strength was 127,231 full-time equivalent (f.t.e.) officers. This represents an increase of 2,645 or 2.1 per cent in the year since 30 September 2000. The 30 September 2001 figure is the highest strength total since February 1995, and the annual increase is the largest since September 1981. Furthermore, the latest six-month increase (i.e. since 31 March 2001) of 1,549 officers exceeded that of the previous twelve months (1,512 between 31 March 2000 and 31 March 2001).

(b) Within the total strength, 2,261 officers were on secondment, 55 more than on 31 March 2001 but 122 fewer than on 30 September 2000. The secondees included 1,207 to the National Crime Squad (NCS) and 271 to the National Criminal Intelligence Service (NCIS). The remainder were seconded to central services (696) and inter-force units (87). Secondments to other England and Wales forces are excluded here, as they are included in the strength of the respective forces.

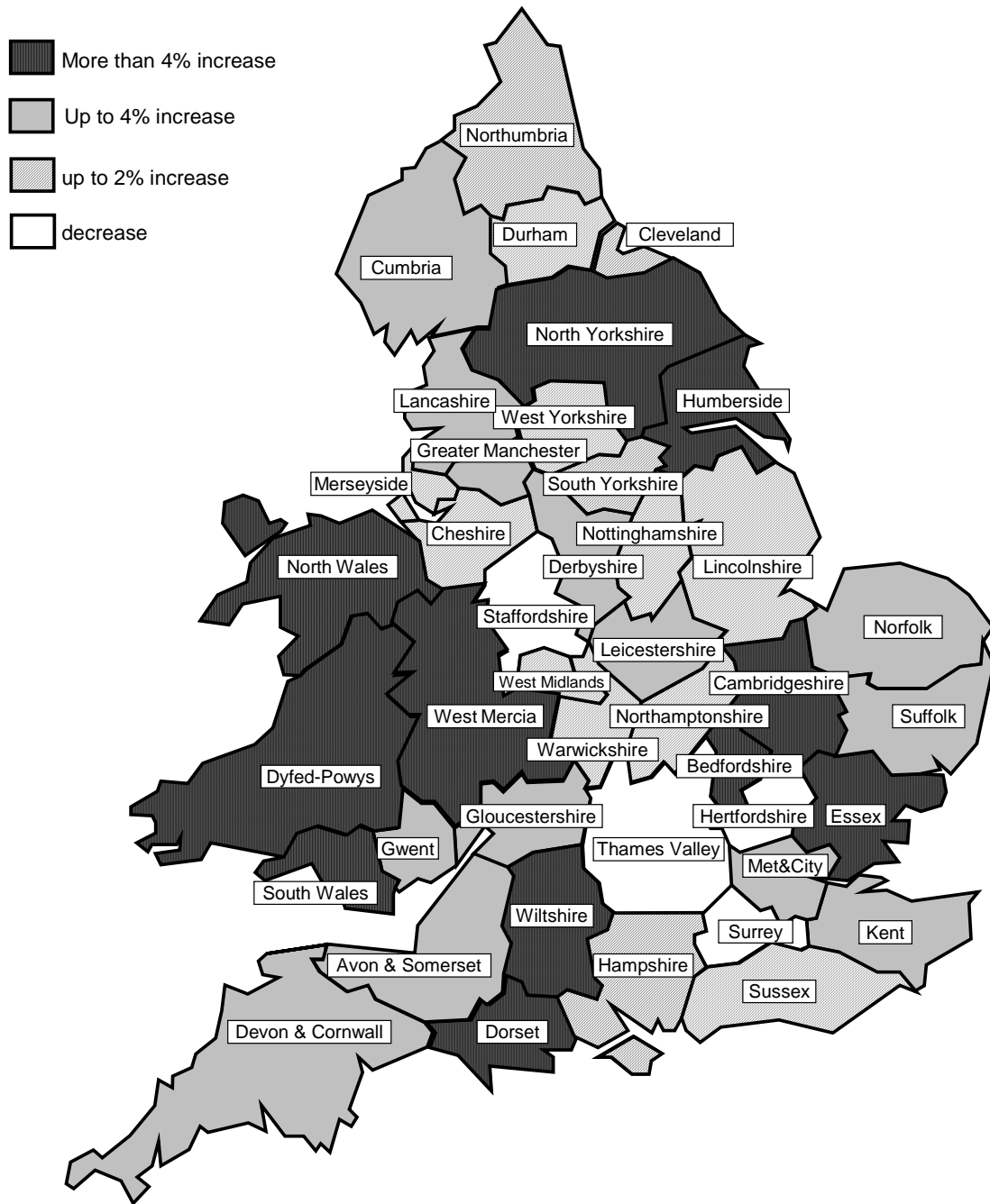
(c) In the 43 police forces in England and Wales, there were 124,969 officers available for ordinary duty on 30 September 2001. This is 1,494 or 1.2 per cent more than on 31 March 2001 and 2,767 or 2.3 per cent more than on 30 September 2000. Since 30 September 2000, there were increases in 38 forces and falls in five. Force comparisons over this period are still affected by the boundary change on 1 April 2000, in which the Metropolitan Police's area outside Greater London transferred to Essex, Hertfordshire and Surrey in accordance with county boundaries (see also section 4).

Table A Police officer strength (full-time equivalents and excluding secondments) in the 43 police force areas, by rank and gender as at 30 September 2001

England and Wales				
Rank	Male	Female	Total	% Female
Chief Constable	44	4	48	8%
Assistant Chief Constable	134	13	147	9%
Superintendent	1,151	78	1,229	6%
Chief Inspector	1,449	117	1,566	7%
Inspector	5,621	413	6,035	7%
Sergeant	16,722	1,885	18,608	10%
Constable	78,047	19,289	97,337	20%
All ranks	103,169	21,800	124,969	17%

Note: As these figures are full-time equivalents and are rounded to the nearest whole number, they may not add precisely to the totals

**Figure 2: Police officer strength (full-time equivalents & excluding secondments)
Percentage change between September 2000 and September 2001.**



(d) Within the total of the 43 forces, 21,800 were female, three per cent more than on 31 March 2001. This represents 17 per cent of the total, although the proportion varies according to rank, and is generally lower in the more senior

ranks. Whereas 20 per cent of constables and 10 per cent of sergeants were female, this was true for only 6 per cent of superintendents and 9 per cent at assistant chief constable or chief constable rank (i.e. 17 of the 195). However, the overall proportion of 17 per cent has risen over the last five years, from 14 per cent in March 1996.

(e) The 31 March 2001 strength total of 125,682 (including secondments) was published in the last Home Office Statistical Bulletin (issue number 10/01, 28 June 2001) as 125,519. Brief reasons for the revision are given in note 6.

2 RECRUITMENT AND WASTAGE (Tables 4, 5, 10; Figure 3; Note 4)

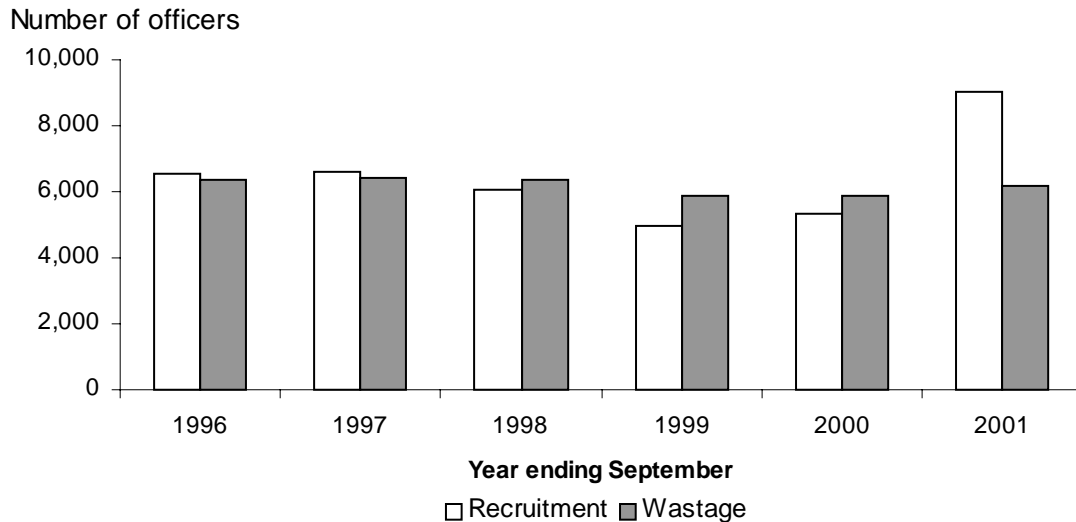
(a) In the 12 months to 30 September 2001, the 43 police forces recruited 9,020 officers. This is 3,694 or 69 per cent more than in the previous year, and is the highest annual total since at least 1979. (The 1979 recruitment total included transfers from other England and Wales forces and returning secondees, and therefore would have been lower on a basis comparable to 2001.) Twenty-six per cent of recruits were female. Almost all recruits come in at constable rank as appointments on probation. Transfers from other England and Wales forces are not included here.

(b) A proportion of the recruits over this period were funded by the Home Office's Crime Fighting Fund (CFF). The fund was set up in part to enable police forces to recruit 9,000 officers over and above the number they otherwise planned to recruit in the three years to March 2003. About 2,800 of the 2000/01 recruits were funded by CFF, and the 2001/02 allocation allows for a further 3,200.

(c) During the year to 30 September 2001, 6,160 officers left the 43 forces, 311 or 5 per cent more than in the previous year. This relatively small increase means that the wastage rate (i.e. the total leaving as a proportion of strength) remains low at 4.8 per cent. Within this total, 3,931 officers retired (79 or 2 per cent more), and 1,530 resigned (229 or 18 per cent more). A further 699 left for other reasons, including transfers to forces outside England and Wales, dismissals and deaths. Transfers to other England and Wales forces are not

included here. Fifteen per cent of officers leaving were female, and 71 per cent of all officers leaving were constables.

Figure 3: Recruitment and wastage



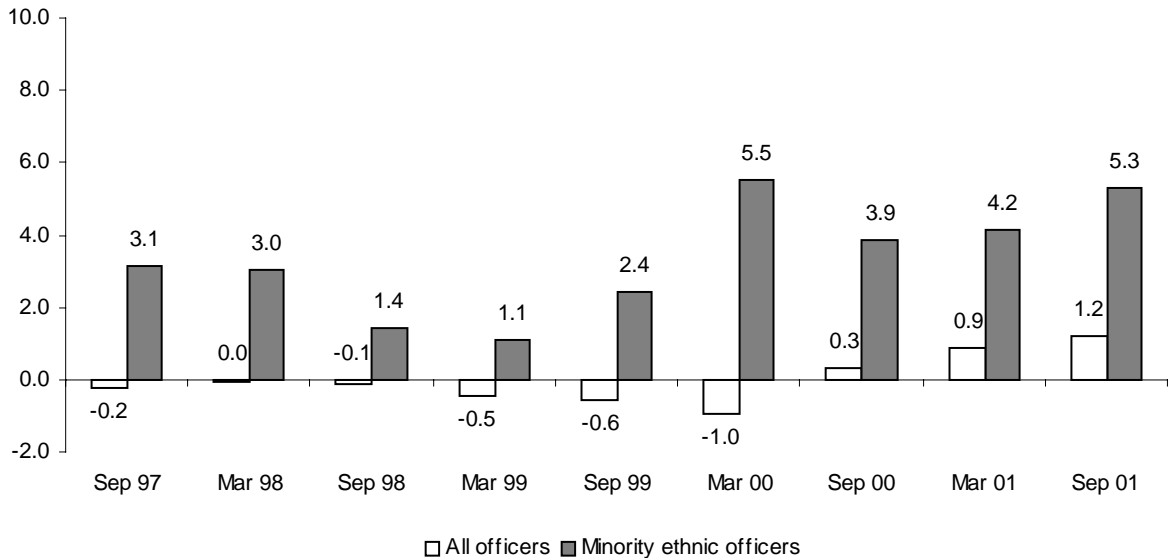
(d) All police officer strength figures contained in section 1 and tables 1, 2 and 3 represent full-time equivalent (f.t.e.) officers, and totals are rounded to the nearest whole number. Figures on recruitment and wastage in this section and in tables 4, 5 and 7 represent actual numbers of persons, regardless of the number of hours worked. For this and other reasons, the net difference between number of officers recruited and leaving does not fully account for the change in officer strength over a particular period.

3 MINORITY ETHNIC OFFICERS (Table 7, 11; Figure 4)

(a) On 30 September 2001, there were 3,134 minority ethnic officers in the 43 police forces, NCS and NCIS, an increase of 158 or 5 per cent over 31 March 2001 and 277 or 10 per cent more than on 30 September 2000. The Metropolitan Police Service accounted for 1,117 minority ethnic officers on 30 September 2001. This was 104 or 10 per cent more than their 30 September 2000 total.

(b) Figure 4 shows the change in the number of minority ethnic officers compared to the change in total officer strength. It shows the minority ethnic increase in the six months to September 2001 to be larger in percentage terms than the previous six months, and over four times the percentage increase for all officers.

Figure 4: Percentage change (over previous six months) in all officers and minority ethnic officers



(c) Over all 43 forces the proportion of minority ethnic officers to all full-time equivalent officers was 2.5 per cent, which is the highest ever. West Midlands had the highest proportion of 5.1 per cent, followed by Leicestershire (4.8 per cent) and the Metropolitan Police (4.4 per cent). When comparing actual numbers of minority ethnic officers, some of whom may be part-time, with full-time equivalent total officers, the proportions may be overstated.

4 POLICE FORCE COMPARISONS (Tables 3, 9, 10, 11)

(a) Thirty-eight forces increased their total officer strength in the 12 months to 30 September 2001. The largest in percentage terms were in North Yorkshire (up

97 or 7.5 per cent), North Wales (up 98 or 7.0 per cent) and South Wales (up 212 or 7.0 per cent). The largest officer increase was in the Metropolitan Police (up 680 or 2.8 per cent). In all, six forces increased their strength by 100 officers or more.

(b) In fourteen of the forces the latest increases have taken officer strength to record levels. The forces are Cambridgeshire, Derbyshire, Devon and Cornwall, Dorset, Durham, Dyfed-Powys, Gwent, Kent, Leicestershire, Lancashire, Northumbria, North Wales, South Wales and South Yorkshire.

(c) The largest falls, in both percentage and officer terms, were in Hertfordshire (down 118 or 6.0 per cent) and Surrey (down 95 or 4.5 per cent). Both these forces were affected by boundary changes in April 2000, which saw the Metropolitan Police's area reduced to that of Greater London, with the remaining parts being incorporated in Essex, Hertfordshire and Surrey, according to county boundaries. These boundary changes led to the budgetary equivalent of 887 officers being made available from the Metropolitan force to the neighbouring forces. As a result, Hertfordshire and Surrey had large increases in strength in the six months to 30 September 2000. Some of these officers have since returned to the Metropolitan Police and new recruits have not yet replaced many of them; hence the latest falls.

(d) There were increases in total officer strength in all of the English Government Office Regions (see table 9) in the 12 months to September 2001. The largest increase in percentage terms was in the South West (up 3.6 per cent). However, this was exceeded by a 5.9 per cent increase in Wales, whose total rose to its highest ever level of 7,134. There were increases in the six months to 30 September 2001 in Wales and all the English regions except the South East, which had a marginal fall of 3 officers. Much of this is due to Surrey's fall that is explained in paragraph 4(c) above.

(e) The Metropolitan Police Service is the largest force, accounting for 20 per cent of officers on 30 September 2001. In total, the eight metropolitan forces (Greater Manchester, City of London, Merseyside, Metropolitan Police, Northumbria, South Yorkshire, West Midlands, and West Yorkshire) accounted for 45 per cent.

(f) Looking at officer strength in relation to the local population, there was an average of 240.3 officers available for duty per 100,000 population in England and Wales as a whole on 30 September 2001: that is about one officer for every 420 people. The combined Metropolitan and City of London forces had the highest number of officers per 100,000 population, at 353.5 compared to Suffolk which had the lowest at 168.5. Generally speaking the rates are higher in the more urban forces, reflecting generally higher levels of crime. In the eight metropolitan forces as a whole there were 300.8 per 100,000 population, 50 per cent more than the rate of 200.3 in the remaining forces.

5 SUPPORT STAFF (Tables 6, 8)

(a) On 30 September 2001 there were 56,644 full-time equivalent civilian staff employed in the 43 police forces areas, NCS and NCIS, an increase of 2,306 or 4.2 per cent over 31 March 2001 and 2,788 or 5.2 per cent over 30 September 2000. Over sixty per cent of the civilian staff were female.

(b) There were 12,068 special constables on 30 September 2001, 654 or 5 per cent fewer than on 31 March 2001 and 1,419 or 11 per cent fewer than on 30 September 2000. About one-third of special constables were female. Recent research¹ found that the primary reasons for specials leaving prematurely were often external to the service, but that underlying internal factors such as conditions of work, training and management were sometimes contributory.

(c) There were 2,313 traffic wardens employed by the 43 police forces on 30 September 2001, 201 or 8 per cent fewer than on 31 March 2001, and 393 or 15 per cent fewer than on 30 September 2000. The continuing fall in the number of traffic wardens reflects the increasing role of local authorities in traffic control.

¹ 'An Investigation into the Premature Wastage of Special Constables', Jackie Alexander, May 2000, Police Research Award Scheme.

Table 1: Total Police Officer Strength in the police service in England and Wales as at 30 September 2001.

England and Wales	Chief Constables	Assistant Chief Constables	Superintendents	Chief Inspectors	Inspectors	Sergeants	Constables	Full time equivalents (1)	
								Total police ranks	
Police officer strength									
Metropolitan Police (2)	6	27	218	377	1,245	4,080	19,422		25,374
Metropolitan counties	7	28	319	364	1,461	4,379	24,680		31,237
Wales	4	10	65	100	338	1,069	5,548		7,134
Other Forces in England	31	82	627	725	2,991	9,081	47,686		61,224
Total	48	147	1,229	1,566	6,035	18,608	97,337		124,969
Police Service Secondments									
NCS	1	2	19	31	87	199	868		1,207
NCIS	1	3	5	24	27	62	149		271
Central Services	0	7	69	53	86	137	345		696
Inter-Force Units	0	0	4	3	11	23	46		87
Total Police Service Secondments	2	12	97	111	211	421	1,408		2,261
Total Police Officer Strength (3)	50	159	1,326	1,677	6,246	19,028	98,745		127,231

(1) This and other tables contain full-time equivalent figures that have been rounded to the nearest whole number. Because of rounding, there may be an apparent discrepancy between totals and the sums of the constituent items.

(2) The Commissioner, Deputy Commissioner and Assistant Commissioners are counted as Chief Constables.

(3) There were also 1,002 other secondments outside the police service in England and Wales (eg to the private sector and law enforcement agencies overseas), but they are not included in the secondments or police officer strength totals.

Table 2: Total Police Officer Strength in the police service in England and Wales, March 1993 to September 2001.

England and Wales	Chief Constables	Assistant Chief Constables	Superintendents	Chief Inspectors	Inspectors	Sergeants	Constables	Full time equivalents (1)		
								Total excluding secondments	Secondments (2)	Total police strength (2)
Police officer strength										
31 March 1993	46	176	1,873	2,133	6,767	19,632	95,501	126,128	2,162	128,290
31 March 1994	46	158	1,668	1,990	6,652	19,377	95,915	125,806	2,091	127,897
31 March 1995	51	155	1,414	1,842	6,559	19,132	96,027	125,180	2,042	127,222
31 March 1996	50	145	1,318	1,706	6,272	18,832	96,521	124,844	2,057	126,901
30 September 1996	47	147	1,289	1,721	6,108	18,882	96,856	125,050	2,073	127,123
31 March 1997	48	145	1,290	1,679	6,164	18,811	96,914	125,051	2,107	127,158
30 September 1997	48	144	1,242	1,620	6,211	18,727	96,823	124,815	2,047	126,862
31 March 1998	49	143	1,230	1,609	6,050	18,603	97,072	124,756	2,058	126,814
30 September 1998	50	145	1,195	1,630	5,979	18,689	96,578	124,265	2,414	126,679
31 March 1999	49	151	1,213	1,604	5,936	18,738	96,150	123,841	2,255	126,096
30 September 1999	48	141	1,222	1,598	5,937	18,565	95,538	123,050	2,344	125,394
31 March 2000	47	149	1,226	1,574	5,941	18,500	94,518	121,956	2,214	124,170
30 September 2000	47	145	1,174	1,557	5,892	18,421	94,966	122,203	2,383	124,586
31 March 2001	46	149	1,218	1,552	6,012	18,601	95,899	123,476	2,206	125,682
30 September 2001(2)	48	147	1,229	1,566	6,035	18,608	97,337	124,969	2,261	127,231
Change between										
30.9.00 and 30.9.01	1	2	55	9	143	186	2,371	2,767	-122	2,645
31.3.01 and 30.9.01	2	-2	11	14	23	7	1,438	1,494	55	1,549

(1) This and other tables contain full-time equivalent figures that have been rounded to the nearest whole number. Because of rounding, there may be an apparent discrepancy between totals and the sums of the constituent items.

(2) At 30 September 2001, there were also 1,002 other secondments outside the police service in England and Wales (eg to the private sector and law enforcement agencies overseas), but they are not included in the secondments or police officer strength totals.

Table 3 : Police Officer Strength as at 30 September 2001 by police force area, rank and gender, and officers per 100,000 population.

England and Wales

Full time equivalents (1)

Police force	Male Ranks								Total Male Ranks	Female Ranks								Total Female Ranks	Total Police Ranks	Total officers per 100,000 population	Total Constables	Constables per 100,000 population
	Chief Constables	Assistant Chief Constables	Superintendents	Chief Inspectors	Inspectors	Sergeants	Constables	Chief Constables		Assistant Chief Constables	Superintendents	Chief Inspectors	Inspectors	Sergeants	Constables							
Avon and Somerset	1	3	23	29	135	411	1,971	2,573	0	0	1	6	9	34	418	468	3,040	201.1	2,389	158.0		
Bedfordshire	1	2	12	9	52	124	654	854	0	0	3	2	5	12	174	196	1,050	185.6	828	146.4		
Cambridgeshire	1	2	16	10	62	182	862	1,135	0	0	0	0	4	17	194	215	1,350	184.8	1,056	144.7		
Cheshire	1	3	13	24	95	289	1,241	1,666	0	0	3	1	8	37	306	355	2,021	205.3	1,547	157.1		
Cleveland	1	1	25	1	67	180	904	1,179	0	1	0	1	5	16	233	256	1,434	257.6	1,136	204.1		
Cumbria	1	1	9	13	44	152	664	883	0	1	0	1	2	11	177	191	1,075	218.8	840	171.1		
Derbyshire	1	3	17	22	87	249	1,179	1,558	0	0	3	2	1	22	266	293	1,851	189.3	1,445	147.8		
Devon and Cornwall	1	3	30	33	130	385	1,865	2,447	0	0	1	1	11	43	469	525	2,972	187.3	2,334	147.1		
Dorset	0	2	14	20	54	186	846	1,122	1	0	0	2	5	19	212	239	1,360	194.8	1,057	151.4		
Durham	1	2	18	19	74	199	981	1,294	0	0	0	1	7	18	281	306	1,600	263.8	1,262	208.0		
Essex	1	3	23	40	122	402	1,861	2,452	0	0	3	3	8	45	427	486	2,937	180.3	2,287	140.4		
Gloucestershire	1	2	11	14	55	154	701	937	0	0	0	2	1	18	210	231	1,169	206.9	911	161.3		
Greater Manchester	1	6	72	72	315	819	4,446	5,731	0	0	4	14	31	116	1,141	1,306	7,036	272.1	5,586	216.0		
Hampshire	1	3	34	35	157	479	2,121	2,830	0	0	1	4	12	78	523	618	3,449	193.1	2,644	148.0		
Hertfordshire	1	3	19	26	89	225	1,118	1,480	0	0	1	2	11	33	316	363	1,843	175.4	1,434	136.5		
Humberside	1	2	23	21	101	252	1,243	1,643	0	0	0	1	8	16	323	348	1,991	226.0	1,566	177.8		
Kent	1	4	29	33	139	432	2,069	2,707	0	0	1	7	9	56	587	660	3,367	210.7	2,656	166.2		
Lancashire	0	2	28	37	150	467	2,019	2,702	1	1	3	4	15	50	511	585	3,288	230.0	2,529	176.9		
Leicestershire	1	1	15	18	87	239	1,365	1,726	0	1	2	2	3	22	306	336	2,062	219.6	1,671	178.0		
Lincolnshire	1	2	9	15	61	169	751	1,008	0	0	2	0	3	18	154	176	1,184	186.7	905	142.6		
London, City of ⁽³⁾	1	2	9	12	48	100	433	605	0	0	0	1	3	7	83	94	699	*	517	*		
Merseyside	1	3	39	54	154	528	2,645	3,424	0	0	3	3	21	64	580	671	4,095	291.8	3,225	229.8		
Metropolitan Police ⁽²⁾⁽³⁾	6	23	205	355	1,174	3,669	15,927	21,359	0	4	13	22	71	411	3,495	4,016	25,374	353.5	19,422	270.4		
Norfolk	1	3	14	15	76	191	902	1,202	0	0	1	3	3	23	205	234	1,436	178.6	1,107	137.6		
Northamptonshire	1	2	13	7	55	148	741	967	0	0	0	0	1	18	193	213	1,180	188.5	935	149.3		
Northumbria	1	4	35	52	169	498	2,486	3,245	0	0	4	2	12	41	590	648	3,893	275.3	3,075	217.5		
North Yorkshire	1	3	12	13	62	206	869	1,166	0	0	1	0	3	17	204	224	1,390	184.3	1,072	142.2		
Nottinghamshire	1	3	21	24	116	323	1,411	1,899	0	0	0	4	4	26	340	374	2,273	220.4	1,751	169.8		
South Yorkshire	1	4	35	46	168	430	1,919	2,603	0	0	4	1	14	68	534	620	3,223	247.6	2,453	188.4		
Staffordshire	1	3	18	23	92	313	1,265	1,715	0	0	1	2	5	29	367	404	2,119	199.9	1,632	154.0		
Suffolk	1	1	12	14	50	151	717	946	0	1	1	1	5	12	180	199	1,146	168.5	897	132.0		
Surrey	1	2	15	20	74	248	1,280	1,640	0	0	1	2	8	45	321	378	2,018	186.7	1,601	148.1		
Sussex	0	4	29	38	145	411	1,707	2,334	1	0	2	3	14	54	429	503	2,837	186.3	2,136	140.3		
Thames Valley	1	2	46	34	179	473	2,320	3,054	0	2	3	4	17	62	566	654	3,708	174.3	2,886	135.6		
Warwickshire	1	3	13	11	42	109	602	781	0	0	1	1	3	5	140	149	930	182.3	741	145.4		
West Mercia	1	2	13	29	84	279	1,242	1,649	0	1	3	1	10	25	305	345	1,994	173.9	1,546	134.8		
West Midlands	1	3	58	40	257	922	4,484	5,765	0	1	3	5	27	129	1,502	1,667	7,432	283.8	5,986	228.6		
West Yorkshire	1	5	49	59	225	590	3,052	3,981	0	0	4	3	17	68	786	878	4,859	229.0	3,838	180.9		
Wiltshire	0	2	14	15	54	160	682	927	1	0	1	1	3	17	203	225	1,152	187.8	885	144.2		
Dyfed-Powys	1	2	12	19	49	166	681	930	0	0	0	0	1	17	150	168	1,098	227.5	832	172.3		
Gwent	1	2	10	15	55	196	818	1,097	0	0	1	0	4	10	191	207	1,303	233.9	1,009	181.0		
North Wales	1	2	13	28	67	218	914	1,243	0	0	1	1	0	23	223	248	1,491	225.8	1,137	172.2		
South Wales	1	4	26	35	151	401	2,095	2,713	0	0	2	2	11	38	475	528	3,241	260.2	2,571	206.3		
Total of all 43 forces	44	134	1,151	1,449	5,621	16,722	78,047	103,169	4	13	78	117	413	1,885	19,289	21,800	124,969	236.0	97,337	183.9		
NCS	1	2	18	28	80	182	767	1,078	0	0	1	3	7	17	101	129	1,207		868			
NCIS	1	3	5	24	26	59	128	246	0	0	0	0	1	3	21	25	271		149			
Other Secondments ⁽⁴⁾	0	7	71	49	83	133	301	644	0	0	2	7	14	27	90	139	783		391			
Total	2	12	94	101	189	374	1,196	1,968	0	0	3	10	22	47	212	294	2,261		1,408			
Total police officer strength	46	146	1,245	1,550	5,810	17,096	79,243	105,137	4	13	81	127	435	1,932	19,502	22,094	127,231	240.3	100,153	182.4		

(1) This and other tables contain full-time equivalent figures that have been rounded to the nearest whole number. Because of rounding, there may be an apparent discrepancy between totals and the sums of the constituent items.

(2) The Commissioner, Deputy Commissioner and Assistant Commissioners are counted as Chief Constables.

(3) Officers per 100,000 population for City of London and Metropolitan Police are combined.

(4) Secondments to Central Services and Inter-Force Units.

Table 4 : Police Officer Recruitment 1 October 2000 to 30 September 2001, by police force area, rank and gender.

England and Wales

Number of officers

Police force	Male Ranks							Total Male Ranks	Female Ranks							Total Female Ranks	Total Police Ranks
	Chief Constables	Assistant Chief Constables	Superintendents	Chief Inspectors	Inspectors	Sergeants	Constables		Chief Constables	Assistant Chief Constables	Superintendents	Chief Inspectors	Inspectors	Sergeants	Constables		
Avon and Somerset	0	0	0	0	0	0	162	162	0	0	0	0	0	0	51	51	213
Bedfordshire	0	0	0	0	0	0	98	98	0	0	0	0	0	0	28	28	126
Cambridgeshire	0	0	0	0	0	0	104	104	0	0	0	0	0	0	31	31	135
Cheshire	0	0	0	0	0	0	77	77	0	0	0	0	0	0	39	39	116
Cleveland	0	0	0	0	0	0	65	65	0	0	0	0	0	0	17	17	82
Cumbria	0	0	0	0	0	0	43	43	0	0	0	0	0	0	21	21	64
Derbyshire	0	0	0	0	0	1	94	95	0	0	0	0	0	0	44	44	139
Devon and Cornwall	0	0	0	0	0	0	125	125	0	0	0	0	0	0	52	52	177
Dorset	0	0	0	0	0	0	77	77	0	0	0	0	0	0	23	23	100
Durham	0	0	0	0	0	0	58	58	0	0	0	0	0	0	23	23	81
Essex	0	0	0	0	0	0	202	202	0	0	0	0	0	0	48	48	250
Gloucestershire	0	0	0	0	0	0	55	55	0	0	0	0	0	0	25	25	80
Greater Manchester	0	0	0	0	0	0	428	428	0	0	0	0	0	0	130	130	558
Hampshire	0	0	0	0	0	0	130	130	0	0	0	0	0	0	63	63	193
Hertfordshire	0	0	0	0	0	0	90	90	0	0	0	0	0	0	30	30	120
Humberside	0	0	0	0	0	0	123	123	0	0	0	0	0	0	65	65	188
Kent	0	0	0	0	0	0	225	225	0	0	0	0	0	0	89	89	314
Lancashire	0	0	0	0	0	1	157	158	0	0	0	0	0	0	74	74	232
Leicestershire	0	0	0	0	0	0	104	104	0	0	0	0	0	0	29	29	133
Lincolnshire	0	0	0	0	0	0	56	56	0	0	0	0	0	0	22	22	78
London, City of (1)	0	0	0	0	0	0	30	30	0	0	0	0	0	0	7	7	37
Merseyside	0	0	0	0	0	0	154	154	0	0	0	0	0	0	59	59	213
Metropolitan Police (1)	0	0	0	0	0	1	1,487	1,488	0	0	0	0	0	1	365	366	1,854
Norfolk	0	0	0	0	0	0	59	59	0	0	0	0	0	0	35	35	94
Northamptonshire	0	0	0	0	0	2	57	59	0	0	0	0	0	1	38	39	98
Northumbria	0	0	0	1	0	0	148	149	0	0	0	0	0	0	69	69	218
North Yorkshire	0	0	0	0	0	0	57	57	0	0	0	0	0	0	33	33	90
Nottinghamshire	0	0	0	0	0	0	134	134	0	0	0	0	0	0	25	25	159
South Yorkshire	0	0	0	0	0	0	120	120	0	0	0	0	0	0	69	69	189
Staffordshire	0	1	0	0	0	0	83	84	0	0	0	0	0	1	23	24	108
Suffolk	0	1	0	0	0	0	68	69	0	0	0	0	0	0	31	31	100
Surrey	0	0	0	0	0	0	145	145	0	0	0	0	0	0	61	61	206
Sussex	0	0	0	0	1	2	153	156	0	0	0	0	0	1	63	64	220
Thames Valley	0	0	2	0	0	0	192	194	0	0	0	0	0	0	60	60	254
Warwickshire	0	0	0	0	0	0	73	73	0	0	0	0	0	0	11	11	84
West Mercia	0	0	0	0	0	0	102	102	0	0	0	0	0	0	33	33	135
West Midlands	0	0	0	0	0	0	385	385	0	0	0	0	0	0	165	165	550
West Yorkshire	0	0	0	0	0	0	209	209	0	0	0	0	0	0	118	118	327
Wiltshire	0	0	0	0	0	1	67	68	0	0	0	0	0	0	46	46	114
Dyfed-Powys	0	0	0	0	0	0	61	61	0	0	0	0	0	0	14	14	75
Gwent	0	0	0	0	0	0	70	70	0	0	0	0	0	0	29	29	99
North Wales	0	0	0	0	0	0	110	110	0	0	0	0	0	0	11	11	121
South Wales	0	0	0	0	0	0	220	220	0	0	0	0	0	0	76	76	296
Total police service	0	2	2	1	1	8	6,657	6,671	0	0	0	0	0	4	2,345	2,349	9,020

(1) The Commissioner, Deputy Commissioner and Assistant Commissioners are counted as Chief Constables.

Table 5 : Police Officer Wastage 1 October 2000 to 30 September 2001, by police force area, rank and gender.

England and Wales

Number of officers

Police force	Male Ranks							Total Male Ranks	Female Ranks							Total Female Ranks	Total Police Ranks
	Chief Constables	Assistant Chief Constables	Superintendents	Chief Inspectors	Inspectors	Sergeants	Constables		Chief Constables	Assistant Chief Constables	Superintendents	Chief Inspectors	Inspectors	Sergeants	Constables		
Avon and Somerset	0	0	8	5	15	19	110	157	0	0	1	1	0	1	10	13	170
Bedfordshire	1	0	2	0	3	9	39	54	0	0	0	0	0	0	4	4	58
Cambridgeshire	0	0	1	3	6	11	50	71	0	0	0	0	0	1	8	9	80
Cheshire	0	1	1	1	9	17	42	71	0	0	1	0	0	0	9	10	81
Cleveland	0	0	4	0	12	26	40	82	0	0	0	0	1	0	9	10	92
Cumbria	0	1	1	1	3	11	23	40	0	0	0	0	0	0	5	5	45
Derbyshire	1	0	2	2	6	11	24	46	0	0	0	0	1	0	4	5	51
Devon and Cornwall	0	3	4	3	13	18	63	104	0	0	0	0	0	0	12	12	116
Dorset	0	0	2	2	9	10	44	67	0	0	0	0	0	2	5	7	74
Durham	0	0	0	5	4	9	36	54	0	0	0	0	1	0	11	12	66
Essex	0	0	3	0	8	21	84	116	0	0	0	0	1	1	26	28	144
Gloucestershire	1	0	1	2	1	10	38	53	0	0	0	0	0	0	5	5	58
Greater Manchester	0	0	14	5	26	48	139	232	0	0	1	0	2	2	43	48	280
Hampshire	0	0	3	11	4	24	116	158	0	0	0	1	0	2	28	31	189
Hertfordshire	0	0	4	1	9	7	69	90	0	0	0	0	0	1	22	23	113
Humberside	0	0	4	2	9	16	75	106	0	0	0	0	0	1	13	14	120
Kent	0	0	4	4	6	32	113	159	0	0	0	0	1	4	21	26	185
Lancashire	0	1	5	2	12	29	74	123	0	0	0	0	1	1	17	19	142
Leicestershire	0	0	4	0	7	12	40	63	0	0	0	0	1	0	10	11	74
Lincolnshire	0	0	0	1	5	12	43	61	0	0	0	0	1	0	3	4	65
London, City of (1)	0	0	4	1	2	10	29	46	0	0	0	0	0	1	7	8	54
Merseyside	0	0	4	6	19	33	98	160	0	0	0	1	1	2	25	29	189
Metropolitan Police (1)	1	5	26	36	69	155	639	931	0	0	1	0	2	14	156	173	1,104
Norfolk	0	0	6	1	3	10	44	64	0	0	0	0	0	0	8	8	72
Northamptonshire	0	0	2	3	4	6	34	49	0	0	0	0	1	0	4	5	54
Northumbria	0	0	6	6	15	21	86	134	0	0	0	1	0	1	31	33	167
North Yorkshire	0	1	0	4	6	11	44	66	0	0	0	0	1	0	5	6	72
Nottinghamshire	0	1	2	3	11	12	68	97	0	0	0	2	5	6	27	40	137
South Yorkshire	0	0	4	6	10	31	75	126	0	0	1	1	1	2	24	29	155
Staffordshire	0	0	2	0	8	13	49	72	0	0	0	0	1	0	11	12	84
Suffolk	0	1	0	0	6	9	43	59	0	0	0	0	0	0	10	10	69
Surrey	0	1	5	2	4	11	50	73	0	0	0	0	1	2	16	19	92
Sussex	2	0	2	0	10	31	131	176	0	0	0	0	0	2	25	27	203
Thames Valley	0	1	7	2	11	21	95	137	0	0	0	0	0	0	25	25	162
Warwickshire	0	1	0	0	3	9	34	47	0	0	0	0	0	2	3	5	52
West Mercia	1	0	7	7	18	21	86	140	0	0	0	0	0	0	20	20	160
West Midlands	0	0	8	5	23	55	275	366	0	0	2	0	0	4	83	89	455
West Yorkshire	0	1	6	4	25	49	167	252	0	0	0	0	1	2	42	45	297
Wiltshire	0	0	0	1	3	9	40	53	0	0	0	0	0	1	6	7	60
Dyfed-Powys	0	0	6	5	2	6	31	50	0	0	0	0	0	1	3	4	54
Gwent	0	1	1	3	1	15	36	57	0	0	0	0	1	0	4	5	62
North Wales	1	0	4	4	6	12	41	68	0	0	0	0	0	0	7	7	75
South Wales	0	0	3	3	9	26	73	114	0	0	0	0	0	0	14	14	128
Total police service	8	19	172	152	435	928	3,530	5,244	0	0	7	7	25	56	821	916	6,160

(1) The Commissioner, Deputy Commissioner and Assistant Commissioners are counted as Chief Constables.

Note: Wastage comprises retirements, resignations, dismissals, deaths and transfers to police forces outside England and Wales.

Table 6 : Civilian staff and traffic warden strength as at 30 September 2001, by police force area, gender and full/part-time employment.

England and Wales

Police force	Civilians								
	Male		Female		Total Strength ⁽¹⁾	Minority Ethnic			Total
	Full-Time	Part-Time	Full-Time	Part-Time		Male	Female	Total	
Avon and Somerset	649	44	769	268	1,531	10	18	28	
Bedfordshire	158	7	274	131	512	8	13	21	
Cambridgeshire	225	13	379	94	668	3	2	5	
Cheshire	282	27	477	135	857	2	1	3	
Cleveland	184	3	351	118	604	2	3	5	
Cumbria	214	21	327	112	612	2	1	3	
Derbyshire	268	31	439	254	874	1	8	9	
Devon and Cornwall	654	65	698	238	1,516	4	3	7	
Dorset	254	48	350	194	721	0	1	1	
Durham	238	4	310	78	612	0	2	2	
Essex	508	29	821	272	1,509	5	13	18	
Gloucestershire	191	22	283	82	533	2	8	10	
Greater Manchester	1,094	44	1,554	547	3,027	27	50	77	
Hampshire	548	28	803	244	1,507	7	18	25	
Hertfordshire	335	15	558	160	990	8	24	32	
Humberside	322	20	361	220	802	1	3	4	
Kent	699	47	1,047	229	2,022	0	0	0	
Lancashire	417	28	842	296	1,409	16	23	39	
Leicestershire	277	3	473	115	691	14	39	53	
Lincolnshire	237	17	289	79	581	1	0	1	
London, City of	116	2	106	9	229	13	17	30	
Merseyside	560	6	854	150	1,489	10	10	20	
Metropolitan Police	4,194	79	5,320	1,049	10,240	533	1,312	1,845	
Norfolk	304	35	371	120	759	2	3	5	
Northamptonshire	249	31	376	208	745	6	7	13	
Northumbria	573	16	770	137	1,346	1	10	11	
North Yorkshire	241	15	381	94	677	1	2	3	
Nottinghamshire	319	16	537	166	1,023	14	20	34	
South Yorkshire	445	44	727	512	1,446	9	9	18	
Staffordshire	300	35	565	142	950	4	5	9	
Suffolk	287	28	295	132	659	5	6	11	
Surrey	380	28	496	131	957	9	14	23	
Sussex	612	49	734	230	1,506	7	14	21	
Thames Valley	712	19	1,135	183	1,965	15	36	51	
Warwickshire	152	10	241	48	428	1	7	8	
West Mercia	393	29	644	231	1,192	3	3	6	
West Midlands	912	77	1,578	646	2,893	54	183	237	
West Yorkshire	881	44	1,154	439	2,296	11	40	51	
Wiltshire	249	31	323	104	650	2	2	4	
Dyfed-Powys	150	27	230	101	438	0	0	0	
Gwent	192	10	326	71	564	2	4	6	
North Wales	202	11	314	74	559	1	2	3	
South Wales	395	17	760	208	1,268	2	10	12	
Total of all 43 forces	20,572	1,175	29,642	9,051	55,856	818	1,946	2,764	
NCS	142	3	221	7	360	3	4	7	
NCIS	221	1	205	2	429	22	34	56	
Total	363	4	426	9	789	25	38	63	
Total police service	20,935	1,179	30,068	9,060	56,644	843	1,984	2,827	

Number of staff

Police force	Traffic Wardens								
	Male		Female		Total Strength ⁽¹⁾	Minority Ethnic			Total
	Full-Time	Part-Time	Full-Time	Part-Time		Male	Female	Total	
Avon and Somerset	31	4	10	9	48	2	0	2	
Bedfordshire	0	0	2	1	3	0	0	0	
Cambridgeshire	22	0	15	0	37	0	0	0	
Cheshire	10	0	7	2	19	0	0	0	
Cleveland	5	0	6	1	12	0	0	0	
Cumbria	0	0	0	0	0	0	0	0	
Derbyshire	30	1	12	0	43	0	0	0	
Devon and Cornwall	76	3	19	11	102	1	1	2	
Dorset	17	0	4	1	22	0	0	0	
Durham	15	0	6	0	21	0	0	0	
Essex	31	1	25	7	59	0	1	1	
Gloucestershire	11	0	18	0	29	0	1	1	
Greater Manchester	52	0	28	3	82	1	0	1	
Hampshire	32	1	21	4	55	0	0	0	
Hertfordshire	11	0	29	8	45	0	1	1	
Humberside	38	0	10	1	49	1	0	1	
Kent	0	0	0	0	0	13	23	36	
Lancashire	59	0	26	2	85	1	0	1	
Leicestershire	35	0	33	8	64	3	0	3	
Lincolnshire	8	0	11	0	19	0	0	0	
London, City of	0	0	0	0	0	0	0	0	
Merseyside	41	0	27	1	69	1	2	3	
Metropolitan Police	275	3	357	59	669	54	43	97	
Norfolk	26	0	8	1	34	0	0	0	
Northamptonshire	5	0	2	0	7	0	0	0	
Northumbria	61	0	10	0	71	0	0	0	
North Yorkshire	6	0	3	3	11	0	0	0	
Nottinghamshire	26	1	4	1	32	0	0	0	
South Yorkshire	41	0	26	6	71	0	0	0	
Staffordshire	10	0	3	0	13	0	0	0	
Suffolk	20	0	4	7	38	0	0	0	
Surrey	10	1	8	1	19	1	0	1	
Sussex	41	1	23	1	65	0	0	0	
Thames Valley	18	2	24	8	48	2	1	3	
Warwickshire	4	0	1	4	7	0	0	0	
West Mercia	16	1	8	2	26	0	0	0	
West Midlands	32	0	45	10	83	2	3	5	
West Yorkshire	63	0	34	5	100	2	0	2	
Wiltshire	6	0	2	0	8	0	0	0	
Dyfed-Powys	11	0	2	0	13	0	0	0	
Gwent	14	1	12	2	31	0	0	0	
North Wales	7	0	2	0	9	0	0	0	
South Wales	66	1	34	2	99	0	0	0	
Total of all 43 forces	1,282	21	921	171	2,313	84	76	160	
NCS	0	0	0	0	0	0	0	0	
NCIS	0	0	0	0	0	0	0	0	
Total	0	0	0	0	0	0	0	0	
Total police service	1,282	21	921	171	2,313	84	76	160	

(1) Full time equivalents

Table 7 : Minority Ethnic Officer Strength by police force area, rank and gender as at 30 September 2001.

England and Wales

Number of officers

Police force	Male Ranks							Total Male Ranks	Female Ranks						Total Female Ranks	Total Police Ranks	
	Chief Constables	Assistant Chief Constables	Superintendents	Chief Inspectors	Inspectors	Sergeants	Constables		Chief Constables	Assistant Chief Constables	Superintendents	Chief Inspectors	Inspectors	Sergeants			Constables
Avon and Somerset	0	0	0	0	0	6	28	34	0	0	0	0	0	0	5	5	39
Bedfordshire	0	0	1	0	0	6	25	32	0	0	0	0	0	0	10	10	42
Cambridgeshire	0	0	0	0	0	3	24	27	0	0	0	0	0	2	5	7	34
Cheshire	0	0	0	0	0	1	4	5	0	0	0	0	0	0	4	4	9
Cleveland	0	0	0	0	1	1	15	17	0	0	0	0	0	1	0	1	18
Cumbria	0	0	0	0	1	1	1	3	0	0	0	0	0	0	1	1	4
Derbyshire	0	0	0	1	3	6	32	42	0	0	0	0	1	1	7	9	51
Devon and Cornwall	0	0	0	0	0	1	10	11	0	0	0	0	0	0	4	4	15
Dorset	0	0	0	0	1	2	5	8	0	0	0	0	0	0	2	2	10
Durham	0	0	0	0	0	1	11	12	0	0	0	0	0	0	2	2	14
Essex	0	0	0	2	2	4	13	21	0	0	0	0	2	0	8	10	31
Gloucestershire	0	0	0	0	0	2	13	15	0	0	0	0	0	0	1	1	16
Greater Manchester	0	0	1	1	7	23	142	174	0	0	0	1	0	1	24	26	200
Hampshire	0	0	0	0	0	6	26	32	0	0	0	0	1	0	6	7	39
Hertfordshire	0	0	0	1	2	3	22	28	0	0	0	0	0	0	7	7	35
Humberside	0	0	0	0	0	1	8	9	0	0	0	0	0	0	7	7	16
Kent	0	0	0	1	1	4	34	40	0	0	0	0	0	0	10	10	50
Lancashire	0	0	0	0	0	5	40	45	0	0	0	0	0	1	11	12	57
Leicestershire	0	0	1	1	3	10	67	82	0	0	0	0	0	0	16	16	98
Lincolnshire	0	0	0	0	0	3	5	8	0	0	0	0	0	1	1	2	10
London, City of (1)	0	0	0	0	1	2	13	16	0	0	0	0	0	0	2	2	18
Merseyside	0	0	0	1	1	5	58	65	0	0	0	0	0	1	15	16	81
Metropolitan Police (1)	1	1	5	10	25	107	751	900	0	0	1	0	2	7	207	217	1,117
Norfolk	0	0	0	0	3	1	8	12	0	0	0	0	0	0	3	3	15
Northamptonshire	0	0	1	0	1	3	18	23	0	0	0	0	0	0	5	5	28
Northumbria	0	0	1	0	0	5	24	30	0	0	0	0	0	0	5	5	35
North Yorkshire	0	0	0	1	0	1	4	6	0	0	0	0	0	0	0	0	6
Nottinghamshire	0	0	2	1	2	2	45	52	0	0	0	0	0	2	12	14	66
South Yorkshire	0	0	0	0	2	13	54	69	0	0	0	0	0	0	17	17	86
Staffordshire	0	0	0	0	0	4	18	22	0	0	0	0	0	1	8	9	31
Suffolk	0	0	0	0	0	0	13	13	0	0	0	0	0	0	7	7	20
Surrey	0	0	0	0	0	4	18	22	0	0	0	0	0	0	7	7	29
Sussex	0	0	0	1	1	3	18	23	0	0	0	0	0	1	7	8	31
Thames Valley	0	0	2	0	2	9	60	73	0	0	0	0	0	1	20	21	94
Warwickshire	0	0	0	1	1	6	11	19	0	0	0	0	0	0	5	5	24
West Mercia	0	0	0	1	0	3	15	19	0	0	0	0	0	0	4	4	23
West Midlands	0	0	0	0	8	38	224	270	0	0	0	0	0	8	104	112	382
West Yorkshire	0	0	1	0	4	17	94	116	0	0	0	0	0	4	28	32	148
Wiltshire	0	0	1	0	0	1	7	9	0	0	0	0	0	0	1	1	10
Dyfed-Powys	0	0	0	0	0	0	4	4	0	0	0	0	0	0	1	1	5
Gwent	0	0	0	0	0	1	15	16	0	0	0	0	0	0	2	2	18
North Wales	0	0	0	0	0	2	4	6	0	0	0	0	0	0	1	1	7
South Wales	0	0	2	0	4	1	32	39	0	0	0	0	0	0	6	6	45
Total of all 43 forces	1	1	18	23	76	317	2,033	2,469	0	0	1	1	6	32	598	638	3,107
NCS	0	0	0	0	0	3	11	14	0	0	0	0	0	0	1	1	15
NCIS	0	0	0	0	1	4	5	10	0	0	0	0	0	0	2	2	12
Total	0	0	0	0	1	7	16	24	0	0	0	0	0	0	3	3	27
Total police service	1	1	18	23	77	324	2,049	2,493	0	0	1	1	6	32	601	641	3,134

(1) The Commissioner, Deputy Commissioner and Assistant Commissioners are counted as Chief Constables.

Table 8 : Special Constable Strength as at, and recruitment/wastage in the 12 months to 30 September 2001 by police force area, gender and ethnic origin.

England and Wales

Number of staff

Police force	Special Constables											
	Total Strength			Ethnic Minority Strength			Recruitment			Wastage		
	Male	Female	Total Strength	Male	Female	Total	Male	Female	Total	Male	Female	Total
Avon and Somerset	265	126	391	6	3	9	25	14	39	47	34	81
Bedfordshire	78	41	119	6	1	7	16	5	21	23	13	36
Cambridgeshire	121	76	197	3	0	3	32	13	45	41	27	68
Cheshire	155	78	233	4	1	5	0	5	5	25	24	49
Cleveland	60	38	98	5	0	5	10	8	18	4	2	6
Cumbria	71	54	125	1	0	1	2	1	3	23	16	39
Derbyshire	186	77	263	6	2	8	16	12	28	33	18	51
Devon and Cornwall	500	280	780	2	1	3	42	33	75	63	40	103
Dorset	164	94	258	3	1	4	21	9	30	21	16	37
Durham	108	38	146	0	0	0	14	5	19	14	12	26
Essex	272	141	413	4	0	4	38	30	68	83	38	121
Gloucestershire	99	54	153	0	0	0	4	3	7	37	14	51
Greater Manchester	233	122	355	8	4	12	42	26	68	71	50	121
Hampshire	317	127	444	5	2	7	52	6	58	64	47	111
Hertfordshire	131	46	177	8	2	10	19	14	33	35	13	48
Humberside	137	70	207	1	0	1	9	3	12	14	8	22
Kent	269	97	366	7	3	10	51	32	83	87	43	130
Lancashire	207	118	325	3	1	4	14	11	25	28	29	57
Leicestershire	108	47	155	12	3	15	4	0	4	33	18	51
Lincolnshire	111	49	160	1	0	1	6	3	9	23	8	31
London, City of	23	11	34	3	3	6	1	0	1	8	0	8
Merseyside	321	186	507	4	3	7	36	15	51	21	20	41
Metropolitan Police	533	220	753	89	24	113	48	13	61	27	11	38
Norfolk	161	79	240	0	1	1	21	18	39	44	25	69
Northamptonshire	129	55	184	3	1	4	32	17	49	31	28	59
Northumbria	211	65	276	5	1	6	31	9	40	50	20	70
North Yorkshire	135	51	186	3	0	3	14	11	25	15	13	28
Nottinghamshire	186	95	281	3	0	3	9	4	13	23	18	41
South Yorkshire	136	53	189	7	0	7	32	18	50	34	19	53
Staffordshire	291	104	395	7	2	9	17	6	23	61	28	89
Suffolk	216	106	322	1	1	2	42	24	66	64	50	114
Surrey	123	53	176	4	0	4	30	8	38	17	3	20
Sussex	220	81	301	1	2	3	8	11	19	11	6	17
Thames Valley	258	119	377	8	3	11	35	15	50	64	50	114
Warwickshire	149	59	208	6	0	6	7	1	8	34	17	51
West Mercia	241	123	364	5	2	7	29	28	57	222	130	352
West Midlands	451	153	604	66	23	89	61	39	100	89	40	129
West Yorkshire	232	139	371	28	10	38	43	33	76	73	37	110
Wiltshire	104	56	160	0	1	1	35	18	53	39	26	65
Dyfed-Powys	117	57	174	1	0	1	18	4	22	31	15	46
Gwent	106	42	148	0	0	0	22	16	38	9	9	18
North Wales	131	72	203	1	1	2	0	0	0	6	7	13
South Wales	178	72	250	2	0	2	22	13	35	21	6	27
Total all forces	8,244	3,824	12,068	332	102	434	1,010	554	1,564	1,763	1,048	2,811

Table 9: Police Officer Strength by English Government offices and Wales (full-time equivalents and excluding secondments).

English Government Office Regions and Wales	Strength as at:			Change in 12 months		Change in 6 months	
	Sep 00	Mar 01	Sep 01	Sep00 - Sep01		Mar01 - Sep01	
	<i>fte</i>	<i>fte</i>	<i>fte</i>	<i>number</i>	<i>%</i>	<i>number</i>	<i>%</i>
NORTH EAST	6,820	6,859	6,928	108	1.6	69	1.0
Cleveland	1,421	1,407	1,434	13	0.9	27	2.0
Durham	1,581	1,595	1,600	19	1.2	6	0.4
Northumbria	3,818	3,857	3,893	75	2.0	36	0.9
NORTH WEST	17,110	17,296	17,514	404	2.4	219	1.3
Cheshire	2,000	2,002	2,021	21	1.1	19	0.9
Cumbria	1,048	1,048	1,075	27	2.6	27	2.6
Greater Manchester	6,767	6,909	7,036	269	4.0	127	1.8
Lancashire	3,215	3,255	3,288	73	2.3	33	1.0
Merseyside	4,081	4,081	4,095	14	0.3	14	0.3
YORKSHIRE AND THE HUMBER	11,189	11,234	11,463	274	2.4	228	2.0
Humberside	1,905	1,917	1,991	85	4.5	74	3.8
North Yorkshire	1,293	1,305	1,390	97	7.5	84	6.5
South Yorkshire	3,184	3,197	3,223	39	1.2	27	0.8
West Yorkshire	4,806	4,815	4,859	53	1.1	44	0.9
EAST MIDLANDS	8,350	8,490	8,550	200	2.4	60	0.7
Derbyshire	1,780	1,823	1,851	71	4.0	28	1.6
Leicestershire	2,010	2,032	2,062	52	2.6	29	1.4
Lincolnshire	1,162	1,202	1,184	23	1.9	-18	-1.5
Northamptonshire	1,166	1,157	1,180	14	1.2	23	2.0
Nottinghamshire	2,232	2,275	2,273	41	1.8	-2	-0.1
WEST MIDLANDS	12,324	12,429	12,474	150	1.2	45	0.4
Staffordshire	2,157	2,129	2,119	-38	-1.8	-10	-0.5
Warwickshire	912	926	930	18	2.0	3	0.4
West Mercia	1,906	1,951	1,994	88	4.6	43	2.2
West Midlands	7,350	7,423	7,432	82	1.1	8	0.1
EASTERN	9,554	9,703	9,762	208	2.2	58	0.6
Bedfordshire	1,006	1,036	1,050	44	4.3	15	1.4
Cambridgeshire	1,266	1,296	1,350	83	6.6	53	4.1
Essex *	2,818	2,897	2,937	119	4.2	41	1.4
Hertfordshire *	1,961	1,922	1,843	-118	-6.0	-79	-4.1
Norfolk	1,387	1,420	1,436	49	3.5	16	1.1
Suffolk	1,115	1,133	1,146	31	2.8	13	1.1
LONDON	25,414	25,581	26,074	660	2.6	493	1.9
London, City of	719	703	699	-20	-2.8	-4	-0.5
Metropolitan *	24,695	24,878	25,374	680	2.8	496	2.0
SOUTH EAST	15,349	15,381	15,378	29	0.2	-3	0.0
Hampshire	3,437	3,438	3,449	12	0.3	11	0.3
Kent	3,239	3,319	3,367	128	3.9	48	1.5
Surrey *	2,113	2,066	2,018	-95	-4.5	-48	-2.3
Sussex	2,812	2,855	2,837	25	0.9	-19	-0.6
Thames Valley	3,748	3,703	3,708	-40	-1.1	5	0.1
SOUTH WEST	9,354	9,576	9,693	339	3.6	118	1.2
Avon & Somerset	2,941	2,994	3,040	100	3.4	47	1.6
Devon & Cornwall	2,873	2,934	2,972	99	3.4	37	1.3
Dorset	1,299	1,354	1,360	61	4.7	6	0.5
Gloucestershire	1,142	1,173	1,169	27	2.3	-4	-0.4
Wiltshire	1,099	1,120	1,152	53	4.8	32	2.8
WALES	6,738	6,927	7,134	396	5.9	207	3.0
Dyfed Powys	1,045	1,055	1,098	53	5.1	44	4.2
Gwent	1,271	1,274	1,303	33	2.6	29	2.3
North Wales	1,393	1,444	1,491	98	7.0	47	3.3
South Wales	3,029	3,154	3,241	212	7.0	87	2.7
TOTAL England and Wales	122,203	123,476	124,969	2,767	2.3	1,494	1.2

f.t.e. Full time equivalents

* These forces have been affected by the boundary changes which took place in April 2000 - see section 4 for more details

Table 10: Police Officer Recruitment and Wastage by English Government offices and Wales.

English Government Office Regions and Wales	Recruitment				Wastage			
	12 months to Sep 00	12 months to Sep 01	Change number	%	12 months to Sep 00	12 months to Sep 01	Change number	%
NORTH EAST	306	381	75	24.5	252	325	73	29.0
Cleveland	88	82	-6	-6.8	49	92	43	87.8
Durham	77	81	4	5.2	53	66	13	24.5
Northumbria	141	218	77	54.6	150	167	17	11.3
NORTH WEST	519	1,183	664	127.9	726	737	11	1.5
Cheshire	54	116	62	114.8	92	81	-11	-12.0
Cumbria	17	64	47	276.5	72	45	-27	-37.5
Greater Manchester	250	558	308	123.2	303	280	-23	-7.6
Lancashire	125	232	107	85.6	135	142	7	5.2
Merseyside	73	213	140	191.8	124	189	65	52.4
YORKSHIRE AND THE HUMBER	427	794	367	85.9	511	644	133	26.0
Humberside	87	188	101	116.1	106	120	14	13.2
North Yorkshire	37	90	53	143.2	64	72	8	12.5
South Yorkshire	157	189	32	20.4	139	155	16	11.5
West Yorkshire	146	327	181	124.0	202	297	95	47.0
EAST MIDLANDS	451	607	156	34.6	322	381	59	18.3
Derbyshire	83	139	56	67.5	53	51	-2	-3.8
Leicestershire	93	133	40	43.0	72	74	2	2.8
Lincolnshire	96	78	-18	-18.8	72	65	-7	-9.7
Northamptonshire	60	98	38	63.3	44	54	10	22.7
Nottinghamshire	119	159	40	33.6	81	137	56	69.1
WEST MIDLANDS	497	877	380	76.5	519	751	232	44.7
Staffordshire	21	108	87	414.3	79	84	5	6.3
Warwickshire	61	84	23	37.7	42	52	10	23.8
West Mercia	33	135	102	309.1	98	160	62	63.3
West Midlands	382	550	168	44.0	300	455	155	51.7
EASTERN	430	825	395	91.9	504	536	32	6.3
Bedfordshire	22	126	104	472.7	64	58	-6	-9.4
Cambridgeshire	71	135	64	90.1	52	80	28	53.8
Essex *	110	250	140	127.3	144	144	0	0.0
Hertfordshire *	141	120	-21	-14.9	126	113	-13	-10.3
Norfolk	61	94	33	54.1	55	72	17	30.9
Suffolk	25	100	75	300.0	63	69	6	9.5
LONDON	918	1,891	973	106.0	1399	1,158	-241	-17.2
London, City of	12	37	25	2.1	47	54	7	14.9
Metropolitan *	906	1,854	948	104.6	1352	1,104	-248	-18.3
SOUTH EAST	929	1,187	258	27.8	804	831	27	3.4
Hampshire	184	193	9	4.9	162	189	27	16.7
Kent	186	314	128	68.8	170	185	15	8.8
Surrey *	233	206	-27	-11.6	95	92	-3	-3.2
Sussex	98	220	122	124.5	184	203	19	10.3
Thames Valley	228	254	26	11.4	193	162	-31	-16.1
SOUTH WEST	462	684	222	48.1	506	478	-28	-5.5
Avon & Somerset	133	213	80	60.2	161	170	9	5.6
Devon & Cornwall	116	177	61	52.6	144	116	-28	-19.4
Dorset	111	100	-11	-9.9	78	74	-4	-5.1
Gloucestershire	70	80	10	14.3	43	58	15	34.9
Wiltshire	32	114	82	256.3	80	60	-20	-25.0
WALES	387	591	204	52.7	306	319	13	4.2
Dyfed Powys	43	75	32	74.4	44	54	10	22.7
Gwent	65	99	34	52.3	57	62	5	8.8
North Wales	94	121	27	28.7	64	75	11	17.2
South Wales	185	296	111	60.0	141	128	-13	-9.2
TOTAL England and Wales	5,326	9,020	3,694	69.4	5,849	6,160	311	5.3

* These forces have been affected by the boundary changes which took place in April 2000 - see section 4 for more details
Wastage comprises retirements, resignations, dismissals, deaths and transfers to police forces outside England and Wales

Table 11: Minority Ethnic Strength by English Government offices and Wales.

English Government Office Regions and Wales	Strength as at:			Change in 12 months		Change in 6 months		Proportion of Minority Ethnic Officers to All Officers Sep-01
	Sep 00	Mar 01	Sep 01	Sep00 - Sep01		Mar01 -Sep01		
	number	number	number	number	%	number	%	
NORTH EAST	61	65	67	6	9.8	2	3.1	1.0
Cleveland	17	18	18	1	5.9	0	0.0	1.3
Durham	13	14	14	1	7.7	0	0.0	0.9
Northumbria	31	33	35	4	12.9	2	6.1	0.9
NORTH WEST	309	333	351	42	13.6	18	5.4	2.0
Cheshire	10	9	9	-1	-10.0	0	0.0	0.4
Cumbria	3	3	4	1	33.3	1	33.3	0.4
Greater Manchester	175	188	200	25	14.3	12	6.4	2.8
Lancashire	48	52	57	9	18.8	5	9.6	1.7
Merseyside	73	81	81	8	11.0	0	0.0	2.0
YORKSHIRE AND THE HUMBER	229	241	256	27	11.8	15	6.2	2.2
Humberside	13	12	16	3	23.1	4	33.3	0.8
North Yorkshire	6	6	6	0	0.0	0	0.0	0.4
South Yorkshire	79	84	86	7	8.9	2	2.4	2.7
West Yorkshire	131	139	148	17	13.0	9	6.5	3.0
EAST MIDLANDS	240	243	253	13	5.4	10	4.1	3.0
Derbyshire	41	45	51	10	24.4	6	13.3	2.8
Leicestershire	94	92	98	4	4.3	6	6.5	4.8
Lincolnshire	8	10	10	2	25.0	0	0.0	0.8
Northamptonshire	32	31	28	-4	-12.5	-3	-9.7	2.4
Nottinghamshire	65	65	66	1	1.5	1	1.5	2.9
WEST MIDLANDS	436	452	460	24	5.5	8	1.8	3.7
Staffordshire	32	30	31	-1	-3.1	1	3.3	1.5
Warwickshire	20	23	24	4	20.0	1	4.3	2.6
West Mercia	30	23	23	-7	-23.3	0	0.0	1.2
West Midlands	354	376	382	28	7.9	6	1.6	5.1
EASTERN	165	166	177	12	7.3	11	6.8	1.8
Bedfordshire	35	38	42	7	20.0	4	11.1	4.0
Cambridgeshire	38	31	34	-4	-10.5	3	9.7	2.5
Essex *	34	33	31	-3	-8.8	-2	-6.1	1.1
Hertfordshire *	31	31	35	4	12.9	4	12.9	1.9
Norfolk	12	15	15	3	25.0	0	0.0	1.0
Suffolk	15	18	20	5	33.3	2	11.1	1.7
LONDON	1,029	1,067	1,135	106	10.3	68	6.4	4.4
London, City of	16	18	18	2	12.5	0	0.0	2.6
Metropolitan *	1,013	1,049	1,117	104	10.3	68	6.5	4.4
SOUTH EAST	210	236	243	33	15.7	7	3.0	1.6
Hampshire	33	40	39	6	18.2	-1	-2.5	1.1
Kent	37	43	50	13	35.1	7	16.3	1.5
Surrey *	29	31	29	0	0.0	-2	-6.5	1.4
Sussex	25	30	31	6	24.0	1	3.3	1.1
Thames Valley	86	92	94	8	9.3	2	2.2	2.5
SOUTH WEST	79	80	90	11	13.9	10	12.5	0.9
Avon & Somerset	33	34	39	6	18.2	5	14.7	1.3
Devon & Cornwall	11	12	15	4	36.4	3	25.0	0.5
Dorset	7	9	10	3	42.9	1	11.1	0.7
Gloucestershire	17	16	16	-1	-5.9	0	0.0	1.4
Wiltshire	11	9	10	-1	-9.1	1	11.1	0.9
WALES	70	73	75	5	7.1	2	2.7	1.1
Dyfed Powys	5	5	5	0	0.0	0	0.0	0.5
Gwent	19	17	18	-1	-5.3	1	5.9	1.4
North Wales	4	5	7	3	75.0	2	40.0	0.5
South Wales	42	46	45	3	7.1	-1	-2.2	1.4
TOTAL England and Wales	2,828	2,956	3,107	279	9.9	151	5.1	2.5

* These forces have been affected by the boundary changes which took place in April 2000 - see section 4 for more details

NOTES

1. The Policing & Crime Reduction Group of the Home Office collected police strength statistics monthly until 1995, when the responsibility was transferred to the Research Development and Statistics Directorate.
2. Figures for secondments comprise NCS, NCIS, central services and inter-force units (see below) but not those officers seconded to forces outside England and Wales (for example to a Scottish force). Secondments from one police force to another are not recorded here but are instead included in the total for the destination force and therefore in the police officer strength total for the 43 forces of England and Wales.
3. The National Crime Squad and National Criminal Intelligence Service are staffed by officers and civilians seconded under section 97 of the Police Act 1996. Staff are appointed from a police force area to these organisations and return to their home force at the end of their secondment. Central services include National Police Training and the Home Office. Inter-force units are organisations which provide a common service to groups of forces in one geographical location, such as regional driving schools.
4. Recruitment and wastage totals reflect the total number of officers joining and leaving the police service in England and Wales. Transfers between one England and Wales force and another are, therefore, not included in recruitment and wastage. So, for example, if an officer transfers from Northumbria to the Metropolitan Police in November 2000, his/her full-time equivalent strength appears in the Northumbria strength as at 30 September 2000 and in the Metropolitan Police total as at 31 March 2001, but not in the Northumbria wastage total for October 2000 to March 2001 or the Metropolitan Police's recruitment for that period.
5. Civilian figures in this bulletin do not include school crossing patrols, contract staff employed by private companies, or staff on maternity leave (who are also excluded from officer figures). However, staff on fixed term contracts and staff employed on a temporary basis are included.

6. The 31 March 2001 strength total was originally published in the last Home Office Statistical Bulletin (issue number 10/01, 28 June 2001) as 125,519. It has since been revised upwards by 163 to 125,682 in table 2 of this bulletin. This is due mainly to upward revisions of 34 and 61 to the Avon and Somerset and Nottinghamshire totals. The forces had both previously excluded their ethnic minority officers from their overall officer totals, although they were both included in the published ethnic minority total for England and Wales.

7. The Crime and Criminal Justice Unit would like to acknowledge the assistance of the police force personnel sections for the timely provision of the data.

8. Contact information:

(a) If you have any enquiries about the figures in this bulletin or you wish to request further analysis of the data:

Crime and Criminal Justice Unit,
Home Office, Room 844,
50 Queen Anne's Gate,
London, SW1H 9AT
telephone: 020 7273 2841.

(b) Additional copies of this bulletin, together with other Research Development and Statistics Directorate publications:

RDS Communications Development Unit,
Home Office,
Room 275, 50 Queen Anne's Gate,
London, SW1H 9AT
telephone: 020 7273 2084
e-mail: publications.rds@homeoffice.gsi.gov.uk

RDS publications are also available from our website at:
<http://www.homeoffice.gov.uk/rds/index.htm>

(c) Press enquiries:

Home Office Press Office,
Communication Directorate,
50 Queen Anne's Gate,
London, SW1H 9AT
telephone: 020 7273 4545.

RESEARCH DEVELOPMENT AND STATISTICS DIRECTORATE MISSION STATEMENT

RDS is part of the Home Office. The Home Office's purpose is to build a safe, just and tolerant society in which the rights and responsibilities of individuals, families and communities are properly balanced and the protection and security of the public are maintained.

RDS is also a part of the Government Statistical Service (GSS). One of the GSS aims is to inform Parliament and the citizen about the state of the nation and provide a window on the work and performance of government, allowing the impact of government policies and actions to be assessed.

Therefore -

Research Development and Statistics Directorate exists to improve policy making, decision taking and practice in support of the Home Office purpose and aims, to provide the public and Parliament with information necessary for informed debate and to publish information for future use.