

Transport Statistics Bulletin

Vehicle Licensing Statistics: 2001



SB (02) 18



A National Statistics publication produced by Transport Statistics: DTLR

National Statistics are produced to high professional standards set out in the National Statistics Code of Practice. They undergo regular quality assurance reviews to ensure that they meet customer needs.

Contact Points: For general enquiries call the National Statistics public enquiry service at: Room DG/18, 1 Drummond Gate, London SW1V2QQ. ☎ 020-7533 5888, fax 020-7533 6261, E-mail: info@ons.gov.uk

You can also obtain National Statistics through the internet – go to www.statistics.gov.uk. For information relating to Transport Statistics go to www.transtat.dtlr.gov.uk/

© Crown copyright 2001

Copyright in the typographical arrangement and design rests with the Crown.

This publication, excluding logos, may be reproduced free of charge in any format or medium for research, private study or for internal circulation within an organisation. This is subject to it being reproduced accurately and not used in a misleading context. The material must be acknowledged as Crown copyright and the title of the publication specified.

This is a value added publication which falls outside the scope of the HMSO Class Licence.

DTLR is often prepared to sell unpublished data. Further information and queries concerning this publication should be directed to: TSR4 2/18 Great Minster House, 76 Marsham Street, London SW1P 4DR

☎ +44 (0)20 7944 – 3077 Fax +44 (0)20 7944 - 3093, E-mail: vehicles.stats@dtlr.gsi.gov.uk

Brief extracts from this publication may be reproduced provided the source is fully acknowledged. Proposals for the reproduction of larger extracts should be addressed to the Department at the following address:

Department for Transport, Local Government and the Regions (DTLR),
Transport Statistics TSF5, Zone 2/17, Great Minster House, 76 Marsham Street, London SW1P 4DR
☎ 020 7944-3098, Fax: 020 7944-2165, E-mail: richard.prestidge@dtlr.gsi.gov.uk

Printed in the United Kingdom on material containing 100% post-consumer waste.

Symbols and conventions: (i) **Unless otherwise stated, all tables refer to Great Britain.**
(ii) **Metric units are generally used.**

Units: Figures are shown in italics when they represent percentages, indices or ratios.

Rounding of figures: In tables where figures have been rounded to the nearest final digit, there may be an apparent slight discrepancy between the sum of the constituent items and the total as shown.

Conversion factors:

1 kilometre = 0.6214 mile	1 tonne = 0.9842 ton
1 tonne-km = 0.6116 ton-mile	1 gallon = 4.546 litres
1 billion = 1,000 million	1 litre = 0.220 gallons

Symbols: The following symbols have been used throughout.

..	= not available	.	= not applicable
-	= Negligible (less than half the final digit shown)	0	= Nil
*	= Sample size too small for reliable estimates.	ow	= of which
{	= subsequent data is disaggregated	}	= subsequent data is aggregated
	= break in the series	P	= provisional data
F	= forecast expenditure	e	= estimated outturn
n.e.s.	= not elsewhere specified	TSO	= The Stationary Office

VEHICLE LICENSING STATISTICS 2001: CONTENTS

Tables:		Page
Motor vehicles currently licensed		
1	By taxation group: 1991-2001	1
2	By taxation group: vehicle details: 1991-2001	2
3	By body type: 1991-2001	4
4	By year of first registration: 2001	5
5	By propulsion type: 2001	9
6	Vehicles currently licensed: Original registrations and licensing rates: 2001	10
7	Motorcars by engine size currently licensed: 2001 by year of first registration	12
8	By taxation group, country, region and UA: 2001	14
Motor vehicles currently licensed - historic series		
9	By taxation group: 1903-1990	18
Motor vehicles registered for the first time		
10	By taxation group: 1991-2001	19
11	By taxation group: vehicle details: 1991-2001	20
12	By county, region and with related information: 2001	22
13	Registration series: by month: 1998-2001	24
Motor vehicles registered for the first time - historic series		
14	By taxation group: 1952-1990	25

Goods vehicles statistics

15	Goods vehicle stock at end of year: 1991-2001	26
16	Goods vehicle stock: by gross weight and axle configuration: 2001	26
17	Goods vehicle stock: by taxation group and axle configuration: 2001	27
18	Rigid goods vehicle stock: by gross vehicle weight and type of body: 2001	28
19	Goods vehicle stock: by gross vehicle weight and year of first registration: 2001	29
20	Rigid goods vehicle stock: by year of first registration and type of body: 2001	30
21	Goods vehicle stock: by country, region, local authority And axle configuration: 2001	31
22	Goods vehicle stock at end of year: by year of first registration: 1991-2001	35
23	Goods vehicle stock at end of year: by gross vehicle weight: 1991-2001	36
24	Goods vehicle stock at end of year: by gross vehicle weight, axle configuration: 1996-2001	37
	Vehicle Licensing Statistics - Notes	38
	Annex: Factors affecting vehicle stock figures	41

Enquiries about the contents of this publication should be made to:

**Department of Transport, Local Government and the Regions
Statistics Branch TSR4
Zone 2/16, Great Minster House
76 Marsham Street
London, SW1P 4DR**

**Telephone (020) 7944 3077
e-mail: vehicle_stats@dtlr.gov.uk**

Table 1 Motor vehicles currently licensed: by taxation group: 1991-2001

Thousands

Year	<u>Private and light goods</u>		Motor cycles scooters and mopeds	<u>Public transportation</u> <i>of which:</i>		Goods ⁴	Special machines/ Special concession ⁵	Other vehicles ⁶
	Body type cars	Other vehicles		Hackney taxation class ¹	Bus taxation class ²			
1991	19,740	2,215	750	109	72 ³	449	346	65
1992	20,116	2,230	688	108	73 ³	437	324	59
1992	19,870	2,198	684	107	72 ³	432	324	59
1993	20,102	2,187	650	107	73 ³	428	318	55
1994	20,479	2,192	630	107	75 ³	434	309	50
1995	20,505	2,217	594	..	74	421	274	44
1996	21,172	2,267	609	..	77	413	254	40
1997	21,681	2,317	626	..	79	414	249	38
1998	22,115	2,362	684	..	80	412	243	37
1999	22,785	2,427	760	..	84	415	241	36
2000	23,196	2,469	825	..	86	418	233	34
2001	23,899	2,544	882	..	89	422	233	33

continued

body type cars in all taxation classes

Year	Crown and exempt	Special vehicles group ⁷	All vehicles	All body type cars	<i>of which:</i>			
					Company	Diesel	Per cent company	Per cent diesel
1991	840		24,511	20,253	2,435	751	12.0	3.7
1992	891		24,851	20,681	2,321	931	11.2	4.5
1992	903		24,577	20,444	2,272	920	11.1	4.5
1993	979		24,826	20,755	2,221	1,226	10.7	5.9
1994	1,030		25,231	21,199	2,197	1,576	10.4	7.4
1995	1,169	28	25,369 ⁸	21,394	2,231	1,891	10.4	8.8
1996	1,424	48	26,302	22,238	2,283	2,182	10.3	9.8
1997	1,522	48	26,974	22,832	2,392	2,441	10.5	10.7
1998	1,558	47	27,538	23,293	2,424	2,580	10.4	11.1
1999	1,573	47	28,368	23,975	2,387	2,930	10.0	12.2
2000	1,590	46	28,898	24,406	2,519	3,153	10.3	12.9
2001	1,602	45	29,747	25,126	2,442	3,460	9.7	13.8

1 Taxation class 35, Hackney. Public transportation vehicles including taxis: Abolished 30th June 1995.

2 Taxation class 34, Buses. Public transportation vehicles with more than 8 seats: Introduced 1st July 1995.

3 Estimated: Retrospective estimates are based on vehicles registrations in tax class 35, with more than 8 seats.

4 Until 30th June 1995 included agricultural vans and lorries and showman's goods vehicles licensed to draw trailers. From 1st July 1995 separate taxation groups for farmers and showmen were abolished.

5 The agricultural and special machines taxation group was abolished on 30th June 1995 and replaced by the special concession taxation group from 1st July 1995.

6 Includes three wheelers, and others.

7 Special vehicles group: Introduced 1st July 1995.

8 Contains 44,000 vehicles still taxed in abolished taxation classes at the end of 1995.

Table 2 Motor vehicles currently licensed: vehicle details: 1991-2001¹

(a) Private and light goods: Body type cars within private and light goods by engine size													Thousands	
Over	Not over	1991	1992	1992	1993	1994	1995	1996	1997	1998	1999	2000	2001	
	700 cc	79	71	70	62	54	46	42	37	29	18	19	23	
700 cc	1,000 cc	2,163	2,109	2,084	1,998	1,905	1,757	1,678	1,564	1,459	1,435	1,415	1,368	
1,000 cc	1,200 cc	2,198	2,232	2,207	2,227	2,261	2,258	2,327	2,336	2,293	2,275	2,228	2,244	
1,200 cc	1,500 cc	5,358	5,411	5,349	5,330	5,337	5,225	5,321	5,418	5,497	5,600	5,677	5,819	
1,500 cc	1,800 cc	5,944	6,105	6,025	6,129	6,276	6,345	6,540	6,655	6,766	6,922	6,992	7,124	
1,800 cc	2,000 cc	2,465	2,655	2,622	2,841	3,088	3,274	3,550	3,828	4,090	4,389	4,604	4,869	
2,000 cc	2,500 cc	726	727	719	722	759	791	851	925	1,003	1,094	1,159	1,275	
2,500 cc	3,000 cc	498	496	489	482	486	494	524	548	574	608	630	666	
3,000 cc		306	309	305	312	313	315	340	371	403	443	473	510	
cc not known		1	-	-	-	-	-	-	-	-	-	-	-	
All capacities		19,737	20,116	19,870	20,102	20,479	20,505	21,172	21,681	22,115	22,785	23,196	23,899	
Other vehicles		2,215	2,230	2,198	2,187	2,192	2,217	2,267	2,317	2,362	2,427	2,469	2,544	
All PLG		21,952	22,345	22,069	22,289	22,672	22,722	23,439	23,998	24,477	25,212	25,666	26,443	

(b) Motor cycles, scooters and mopeds: by engine size													Thousands	
Over	Not over	1991	1992	1992	1993	1994	1995	1996	1997	1998	1999	2000	2001	
	50 cc	207	173	173	147	129	112	105	96	102	117	141	154	
50 cc	125 cc	249	222	222	204	187	170	162	143	143	148	160	172	
125 cc	150 cc	2	2	2	2	2	1	1	1	1	1	1	1	
150 cc	200 cc	24	22	22	19	18	14	13	12	12	12	13	13	
200 cc	250 cc	60	55	55	52	50	46	46	44	42	41	38	35	
250 cc	350 cc	15	15	15	15	15	12	11	10	10	9	9	8	
350 cc	500 cc	42	41	41	42	45	43	48	54	57	61	62	62	
500 cc		150	155	155	169	186	196	223	265	317	371	403	437	
All over 50 cc		543	512	512	503	502	482	504	530	582	642	685	727	
All engine sizes		750	688	512	650	630	594	609	626	684	760	825	882	

(c) Public transport vehicles: by seating capacity													Thousands	
Over	Not over	1991	1992	1992	1993	1994	1995	1996	1997	1998	1999	2000	2001	
	4 seats	21.5	18.1	18.0	15.4	13.3	2.6							
4 seats	8 seats	16.1	17.1	17.0	17.9	19.2	5.5							
All 8 seats or less		37.6	35.3	35.0	33.4	32.5	8.0							
	8 seats	20.7	21.5	21.4	22.5	23.2	23.5	25.7	27.7	29.3	32.2	34.2	36.4	
32 seats	48 seats	6.1	6.4	6.4	6.8	7.8	8.6	9.6	10.9	12.6	13.9	15.0	15.6	
48 seats		44.8	44.6	44.4	43.9	43.5	41.6	41.3	40.1	38.2	37.6	37.2	36.5	
All over 8 seats		71.5	72.5	72.2	73.3	74.5	73.8	76.6	78.6	80.1	83.6	86.3	88.5	
All capacities		109.1	107.8	107.2	106.6	107.0								

(d) General goods: by gross weight													Thousands	
Over	Not over	1991	1992	1992	1993	1994	1995	1996	1997	1998	1999	2000	2001	
3.5 tonnes	7.5 tonnes	148	143	143	139	139	144	148	148	150	151	151	152	
7.5 tonnes	12 tonnes	17	16	16	15	15	15	15	15	14	14	13	13	
12 tonnes	25 tonnes	129	124	124	120	118	118	116	112	107	105	102	100	
25 tonnes	33 tonnes	49	46	46	47	51	52	53	55	56	60	62	65	
33 tonnes	38 tonnes	60	63	63	65	71	76	80	83	82	60	49	39	
38 tonnes		-	-	-	-	-	1	1	2	3	25	39	53	
Gross weight unknown		1	1	1	-	-	-	-	-	-	-	-	-	
All vehicles		403	393	393	387	394	406	413	414	412	415	418	422	

¹ The vehicle taxation system was subject to major revisions in 1995. The method used to estimate stock figures changed in 1992

Table 2 (continued)

(e) Special machines/special concession group (mainly agricultural tractors and machinery)												Thousands	
	1991	1992	1992	1993	1994	1995	1996	1997	1998	1999	2000	2001	
Agricultural tractors	221	209	209	207	202	203	190	186	182	180	174	169	
Combine harvesters and other agric. machinery	41	40	40	40	40	44	41	41	40	40	37	41	
Mowing machines	8	7	7	7	6	6	6	6	6	7	7	8	
Electric							16	13	12	11	11	10	
Gritting vehicle							3	3	3	3	3	3	
Snow plough							1	1	1	1	1	1	
Steam vehicles							-	0	0	-	-	-	
All vehicles	346	324	324	318	309	274	254	249	243	241	233	233	

(f) Other licensed vehicles												Thousands	
	1991	1992	1992	1993	1994	1995	1996	1997	1998	1999	2000	2001	
Three wheelers less than 450 kgs	43	39	39	35	32	29	27	26	24	22	21	19	
General haulage ²	3	2	2	2	2	2	2	2	1	1	1	2	
Others	19	18	18	17	15								
Recovery						13	11	11	11	13	12	13	
All vehicles	65	59	59	55	50	44	40	38	37	36	34	33	

(g) Crown and other vehicles exempt from licence duty												Thousands	
	1991	1992	1992	1993	1994	1995	1996	1997	1998	1999	2000	2001	
Crown vehicles	36	35	35	34	34	20	15	22	15	13	13	13	
Other exempt:													
Disabled	421	477	477	571	643	718	816	879	897	912	943	970	
Over 25 years old	0	0	0	0	0	120	278	326	352	354	340	328	
Others	383	379	379	374	353	312	314	296	295	295	294	291	
Total Other exempt	804	855	855	945	996	1,150	1,409	1,500	1,543	1,560	1,577	1,589	
All exempt vehicles	840	891	891	979	1,030	1,169	1,424	1,522	1,558	1,573	1,590	1,602	

(h) Special vehicles group ³ : Tax class 14 and 15												Thousands	
	1991	1992	1992	1993	1994	1995	1996	1997	1998	1999	2000	2001	
Special vehicles group						28	48	48	47	47	46	45	

2 Until end June 1995 also included showman's haulage.

3 Special vehicles group introduced from July 1995

Table 3 Motor vehicles currently licensed: by body type: 1991-2001

Thousands										
<u>Year</u>	<u>Cars</u>	<u>Taxis</u> ¹	<u>Motor cycles</u>	<u>Three wheelers</u>	<u>Light goods</u>	<u>Goods</u>	<u>Buses and coaches</u>	<u>Agricultural vehicles etc</u> ²	<u>Other vehicles</u> ³	<u>All vehicles</u>
1991	20,253	32	848	43	1,961	624	154	309	287	24,511
<u>1992</u> ⁴	20,681	32	784	40	1,976	606	155	297	280	24,851
1992 ⁵	20,444	32	780	40	1,951	600	154	298	280	24,577
1993	20,755	32	744	36	1,943	587	153	294	282	24,826
1994	21,199	32	721	34	1,951	575	154	285	281	25,231
1995	21,394	33	702	31	1,949	556	153	282	268	25,369
1996	22,238	34	739	30	2,000	555	158	286	263	26,302
1997	22,832	35	752	28	2,055	556	161	286	269	26,974
1998	23,293	36	814	27	2,105	551	161	285	267	27,538
1999	23,975	37	889	26	2,167	564	168	288	254	28,368
2000	24,406	38	954	24	2,204	583	173	287	229	28,898
2001	25,126	39	1,010	22	2,276	603	172	284	216	29,747

1 These include only custom built 'black cab' design vehicles.

2 Includes various types of harvesters, works trucks, mobile cranes and mowing machines.

3 Examples include ambulances, fire engines, road rollers, road construction vehicles, street cleansing etc etc.

4 For the years up to 1992 estimates are taken from the annual vehicle census based upon DVLA main vehicle file.

5 From 1992 estimates of licensed stock are taken from the Department of Transport, Local Government and the Region's Vehicle Information Database.

Table 4 Motor vehicles currently licensed 2001: By year of first registration

(a) Private and light goods: Body type cars within private and light goods by engine size Thousands

Over	Not over	Pre-1983	1983	1984	1985	1986	1987	1988	1989	1990	1991
Petrol cars											
	700 cc	1.1	0.4	0.4	0.8	1.4	1.9	1.6	1.1	0.4	0.0
700 cc	1,000 cc	17.7	9.1	13.3	23.8	36.9	56.3	90.0	103.4	95.7	73.2
1,000 cc	1,200 cc	20.5	14.0	20.2	28.7	39.5	55.8	87.8	115.7	134.4	129.6
1,200 cc	1,500 cc	39.6	20.2	32.4	53.8	81.8	123.7	202.0	293.9	319.7	289.2
1,500 cc	1,800 cc	34.3	16.2	23.8	43.1	75.4	131.4	223.8	311.3	340.9	316.7
1,800 cc	2,000 cc	16.4	8.6	13.8	23.8	37.4	63.5	107.3	171.5	184.8	166.5
2,000 cc	2,500 cc	12.6	6.9	9.8	13.5	23.2	26.4	27.5	30.4	26.0	20.7
2,500 cc	3,000 cc	13.4	5.5	6.3	8.0	9.8	15.3	22.0	30.7	28.2	18.9
3,000 cc		20.3	4.1	5.2	7.3	8.0	10.2	15.9	18.7	17.3	12.6
All petrol cars		175.9	85.1	125.2	202.6	313.5	484.4	777.9	1,076.7	1,147.5	1,027.5
Diesel cars											
	700 cc	0.0	0.0	0.0	0.0	0.0	0.0	0.0	0.0	0.0	0.0
700 cc	1,000 cc	0.0	0.0	0.0	0.1	0.1	0.1	0.1	0.1	0.1	0.1
1,000 cc	1,200 cc	0.0	0.0	0.0	0.0	0.0	0.0	0.0	0.0	0.0	0.0
1,200 cc	1,500 cc	0.0	0.0	0.0	0.0	0.0	0.0	0.1	1.4	2.8	2.6
1,500 cc	1,800 cc	0.5	0.7	1.9	4.8	8.5	13.2	19.0	29.1	34.8	45.9
1,800 cc	2,000 cc	0.1	0.1	0.4	1.1	1.8	5.9	9.5	16.1	20.0	26.3
2,000 cc	2,500 cc	1.8	0.9	1.5	1.8	2.9	5.6	8.3	9.4	10.6	12.2
2,500 cc	3,000 cc	0.5	0.5	0.5	1.0	1.3	1.1	2.5	3.0	3.6	3.9
3,000 cc		1.0	0.3	0.3	0.4	0.4	0.4	0.5	0.7	0.6	0.5
All diesel cars		4.0	2.5	4.7	9.2	15.0	26.4	39.9	59.8	72.4	91.5
Other car propulsion types		0.1	0.0	0.0	0.1	0.1	0.1	0.2	0.2	0.3	0.3
Other vehicles		43.9	11.7	16.5	25.5	41.4	63.8	99.4	131.8	127.1	105.2
All PLG		223.9	99.3	146.4	237.3	370.0	574.7	917.4	1,268.5	1,347.3	1,224.5

(b) Motor cycles, scooters and mopeds: by engine size Thousands

Over	Not over	Pre-1983	1983	1984	1985	1986	1987	1988	1989	1990	1991
	50 cc	4.8	1.4	1.7	2.2	2.1	2.2	2.3	2.6	2.7	2.2
50 cc	125 cc	7.4	2.6	3.0	3.5	3.7	3.9	4.9	5.6	5.9	4.8
125 cc	150 cc	0.3	0.0	0.0	0.0	0.0	0.0	0.0	0.0	0.0	0.0
150 cc	200 cc	3.8	0.2	0.2	0.2	0.1	0.1	0.2	0.2	0.3	0.2
200 cc	250 cc	9.7	0.6	0.4	0.3	0.3	0.4	0.7	1.0	1.3	1.0
250 cc	350 cc	0.6	0.1	0.1	0.2	0.4	0.3	0.4	0.4	0.4	0.4
350 cc	500 cc	7.6	0.8	0.5	0.7	0.6	0.7	0.7	0.9	1.1	1.5
500 cc		19.3	2.7	3.2	3.4	3.9	4.4	6.4	9.0	11.2	12.0
All over 50 cc		48.8	7.0	7.4	8.2	9.0	9.7	13.2	17.0	20.2	19.9
All engine sizes		53.5	8.5	9.1	10.4	11.1	11.9	15.6	19.7	22.9	22.1

(c) Public transport vehicles: by seating capacity Thousands

Over	Not over	Pre-1983	1983	1984	1985	1986	1987	1988	1989	1990	1991
8 seats	32 seats	0.2	0.1	0.1	0.1	0.4	0.7	1.2	1.4	1.5	1.4
32 seats	48 seats	0.7	0.1	0.1	0.1	0.1	0.1	0.1	0.2	0.3	0.3
48 seats		7.0	2.0	2.0	1.7	1.5	1.0	1.7	2.2	1.7	1.0
All capacities		7.9	2.2	2.2	1.9	1.9	1.8	3.0	3.8	3.5	2.6

Table 4 (continued)

(a) Private and light goods: Body type cars within private and light goods by engine size												Thousands
Over	Not over	1992	1993	1994	1995	1996	1997	1998	1999	2000	2001	All years
Petrol cars												
	700 cc	0.1	0.5	0.8	0.3	0.1	0.1	0.2	1.0	3.6	6.2	22.0
700 cc	1,000 cc	48.8	62.1	68.2	66.6	61.3	64.6	87.2	125.2	144.5	118.6	1,366.5
1,000 cc	1,200 cc	157.4	167.8	175.3	202.8	185.6	155.4	111.9	126.9	127.6	186.9	2,243.7
1,200 cc	1,500 cc	329.3	348.3	370.5	376.8	436.0	490.3	503.6	431.1	477.3	503.5	5,723.2
1,500 cc	1,800 cc	301.4	343.0	360.2	389.9	438.4	499.7	575.8	556.9	553.6	590.9	6,126.6
1,800 cc	2,000 cc	188.9	205.4	208.6	208.2	244.5	282.5	285.0	297.3	295.9	266.2	3,276.0
2,000 cc	2,500 cc	20.2	25.3	43.5	48.0	51.8	78.5	87.1	92.4	83.3	113.6	840.8
2,500 cc	3,000 cc	18.9	19.3	22.1	34.0	33.8	36.1	40.4	47.2	46.5	50.2	506.5
3,000 cc		13.5	18.7	20.8	26.0	32.6	41.5	45.2	43.8	42.6	46.1	450.5
All petrol cars		1,078.5	1,190.4	1,270.0	1,352.4	1,484.0	1,648.7	1,736.6	1,721.8	1,775.0	1,882.1	20,555.8
Diesel cars												
	700 cc	0.0	0.0	0.0	0.0	0.0	0.0	0.0	0.2	0.4	0.6	1.2
700 cc	1,000 cc	0.2	0.1	0.0	0.0	0.0	0.0	0.0	0.0	0.2	0.2	1.5
1,000 cc	1,200 cc	0.0	0.0	0.0	0.0	0.0	0.0	0.1	0.0	0.0	0.0	0.3
1,200 cc	1,500 cc	5.9	26.9	28.5	8.5	2.1	1.8	1.4	0.8	1.9	10.1	94.7
1,500 cc	1,800 cc	67.9	97.3	132.2	145.3	108.4	79.0	61.9	47.5	48.6	47.8	994.5
1,800 cc	2,000 cc	50.4	105.8	135.8	121.7	144.7	158.5	172.0	164.0	180.7	276.3	1,591.1
2,000 cc	2,500 cc	15.4	23.8	35.5	42.5	39.3	43.5	40.0	39.8	38.7	56.0	429.3
2,500 cc	3,000 cc	3.4	4.7	10.3	13.3	13.5	15.0	19.3	18.1	17.9	23.8	157.0
3,000 cc		2.4	4.3	3.7	3.2	3.1	3.1	3.0	2.6	7.2	11.1	48.9
All diesel cars		145.6	262.9	346.0	334.5	311.1	300.9	297.7	273.0	295.6	425.9	3,318.6
Other car propulsion types		0.3	0.4	1.4	1.7	1.6	2.6	3.7	3.9	4.7	2.7	24.4
Other vehicles		113.8	116.2	143.6	162.9	176.3	203.3	221.5	224.8	243.4	271.8	2,543.8
All PLG		1,338.2	1,569.8	1,761.0	1,851.5	1,973.1	2,155.5	2,259.5	2,223.4	2,318.7	2,582.5	26,442.6

(b) Motor cycles, scooters and mopeds: by engine size												Thousands
Over	Not over	1992	1993	1994	1995	1996	1997	1998	1999	2000	2001	All years
	50 cc	1.9	1.6	2.0	2.2	3.6	5.9	11.8	22.1	34.2	44.6	154.2
50 cc	125 cc	4.4	3.9	4.0	4.3	6.2	6.6	10.0	17.7	27.4	42.3	172.0
125 cc	150 cc	0.0	0.0	0.0	0.0	0.0	0.0	0.1	0.1	0.1	0.2	0.8
150 cc	200 cc	0.1	0.1	0.2	0.2	0.2	0.3	0.9	1.3	1.7	2.9	13.3
200 cc	250 cc	1.1	1.2	1.2	1.4	1.8	2.0	2.5	2.6	2.6	2.8	34.7
250 cc	350 cc	0.5	0.5	0.5	0.4	0.4	0.4	0.4	0.5	0.3	0.6	7.7
350 cc	500 cc	1.5	1.6	2.7	3.1	4.8	7.4	6.7	6.4	6.0	7.0	62.3
500 cc		12.1	13.1	15.9	19.3	27.1	43.2	51.4	58.3	57.4	63.5	436.5
All over 50 cc		19.8	20.3	24.4	28.6	40.5	59.8	72.0	86.7	95.5	119.2	727.4
All engine sizes		21.7	21.9	26.4	30.8	44.2	65.8	83.8	108.8	129.7	163.8	881.7

(c) Public transport vehicles: by seating capacity												Thousands
Over	Not over	1992	1993	1994	1995	1996	1997	1998	1999	2000	2001	All years
8 seats	32 seats	1.2	1.6	2.1	2.5	3.1	3.1	3.7	4.1	4.1	4.2	36.4
32 seats	48 seats	0.6	0.7	1.2	1.4	1.4	1.9	2.0	1.8	1.5	1.0	15.6
48 seats		0.9	1.1	0.9	1.6	1.8	1.5	1.7	1.7	1.8	1.8	36.5
All capacities		2.7	3.4	4.2	5.4	6.2	6.4	7.3	7.6	7.4	7.0	88.6

Table 4 (continued)

(d) General goods: by gross weight		Thousands									
Over	Not over	Pre-1983	1983	1984	1985	1986	1987	1988	1989	1990	1991
3.5 tonnes	7.5 tonnes	1.4	0.7	1.1	2.1	2.6	4.3	6.5	7.6	6.6	4.9
7.5 tonnes	12 tonnes	0.2	-	0.1	0.2	0.3	0.4	0.5	0.6	0.6	0.5
12 tonnes	25 tonnes	0.6	0.4	0.7	1.1	1.5	2.4	4.1	5.4	4.7	3.6
25 tonnes	33 tonnes	-	-	0.1	0.2	0.3	0.6	1.2	1.8	1.2	1.0
33 tonnes	38 tonnes	-	-	-	0.1	0.2	0.4	0.7	1.1	0.8	0.8
38 tonnes		-	-	-	-	-	0.1	0.3	0.4	0.3	0.4
All vehicles		2.3	1.3	2.1	3.7	4.9	8.2	13.3	16.9	14.3	11.2

(e) Special machines/Special concession group (mainly agricultural tractors and machinery)		Thousands									
		Pre-1983	1983	1984	1985	1986	1987	1988	1989	1990	1991
Agricultural tractors		29.9	5.0	5.1	5.6	4.3	4.9	6.3	6.3	6.1	5.9
Combine harvesters and other agricultural machinery		3.1	0.7	0.8	1.0	0.9	1.0	1.2	1.3	1.3	1.2
Mowing machines		-	-	-	-	-	-	-	0.1	0.2	0.1
Electric		3.8	0.4	0.3	0.3	0.3	0.3	0.4	0.4	0.4	0.4
Gritting vehicle		-	-	-	-	-	0.1	0.1	0.2	0.2	0.2
Snow plough		0.1	-	-	-	-	-	-	-	-	0.1
Steam vehicles		0.0	-	0.0	0.0	-	-	0.0	-	-	0.0
All vehicles		37.1	6.2	6.3	7.1	5.6	6.4	8.1	8.3	8.2	7.9

(f) Other licensed vehicles		Thousands									
		Pre-1983	1983	1984	1985	1986	1987	1988	1989	1990	1991
Three wheelers less than 450 kgs		3.2	1.0	1.1	1.1	1.2	1.2	1.3	1.0	0.9	0.1
General haulage		-	-	-	-	-	-	-	0.1	0.1	-
Recovery		0.9	0.3	0.5	0.5	0.6	0.8	1.3	1.0	0.8	0.5
All vehicles		4.2	1.4	1.6	1.6	1.9	2.0	2.6	2.1	1.8	0.7

(g) Crown and other vehicles exempt from licence duty		Thousands									
		Pre-1983	1983	1984	1985	1986	1987	1988	1989	1990	1991
Crown vehicles		4.4	0.2	0.2	0.2	0.2	0.2	0.2	0.2	0.2	0.2
Other exempt:											
Disabled		6.3	3.2	4.9	7.9	12.5	19.0	29.9	40.6	42.1	37.3
Over 25 years old		269.2	2.6	2.7	1.5	1.5	1.6	2.6	3.2	3.7	3.1
Others		164.1	8.0	9.7	3.7	3.1	2.9	3.3	3.8	3.5	3.6
All exempt not crown		439.7	13.8	17.3	13.1	17.1	23.5	35.8	47.5	49.3	43.9
All exempt vehicles		444.0	14.0	17.5	13.3	17.3	23.7	36.0	47.7	49.5	44.1

(h) Special vehicles group: Tax classes 14 and 15		Thousands									
		Pre-1983	1983	1984	1985	1986	1987	1988	1989	1990	1991
Special vehicles group		2.1	0.5	0.6	0.7	0.8	1.1	1.6	1.8	1.5	1.1

Table 4 (continued)

(d) General goods:by gross weight												Thousands
Over	Not over	1992	1993	1994	1995	1996	1997	1998	1999	2000	2001	All years
3.5 tonnes	7.5 tonnes	5.8	6.3	8.6	10.4	10.7	11.6	14.5	13.8	15.8	16.4	151.8
7.5 tonnes	12 tonnes	0.6	0.8	0.7	0.9	1.0	1.0	1.0	1.1	1.2	1.1	12.7
12 tonnes	25 tonnes	4.1	5.0	6.4	8.1	8.2	7.7	9.1	8.7	9.2	9.2	100.3
25 tonnes	33 tonnes	1.2	2.5	5.0	6.2	6.0	5.8	7.1	8.0	8.0	8.4	64.8
33 tonnes	38 tonnes	1.1	1.9	2.7	3.7	3.5	3.8	5.2	4.4	4.4	4.4	39.3
38 tonnes		0.6	1.3	2.3	3.6	3.9	4.5	5.4	9.2	10.3	10.5	53.0
All vehicles		13.4	17.9	25.6	32.9	33.4	34.3	42.2	45.0	48.9	50.1	422.0

(e) Special machines/Special concession group (Mainly agricultural tractors and machinery)												Thousands
		1992	1993	1994	1995	1996	1997	1998	1999	2000	2001	All years
Agricultural tractors		5.8	8.3	9.2	10.4	11.2	9.6	6.8	8.3	8.1	12.4	169.5
Combine harvesters		1.3	1.9	2.4	3.2	3.0	3.4	2.4	2.7	3.3	5.4	41.4
and other agricultural machinery												
Mowing machines		0.2	0.3	0.4	0.4	0.5	0.7	0.9	1.1	1.2	1.3	7.7
Electric		0.3	0.3	0.2	0.2	0.2	0.2	0.4	0.5	0.5	0.5	10.1
Gritting vehicle		0.2	0.2	0.2	0.2	0.1	0.1	0.1	0.1	0.2	0.2	2.7
Snow plough		0.1	0.1	0.1	-	-	-	-	-	-	-	0.9
Steam vehicles		-	-	-	-	-	-	-	-	-	0.1	0.2
All vehicles		7.8	11.1	12.5	14.3	15.1	14.1	10.5	12.7	13.3	19.9	232.5

(f) Other licensed vehicles												Thousands
		1992	1993	1994	1995	1996	1997	1998	1999	2000	2001	All years
Three wheelers		0.9	0.7	0.6	0.4	0.4	0.8	0.7	0.7	0.6	0.6	18.7
less than 450 kgs												
General haulage		-	0.1	0.1	0.1	0.1	0.2	0.1	0.2	0.2	0.2	1.7
Recovery		0.6	0.5	0.6	0.5	0.6	0.5	0.5	0.5	0.5	0.5	12.7
All vehicles		1.5	1.3	1.4	1.1	1.1	1.4	1.4	1.4	1.2	1.3	33.0

(g) Crown and other vehicles exempt from licence duty												Thousands
		1992	1993	1994	1995	1996	1997	1998	1999	2000	2001	All years
Crown vehicles		0.3	0.3	0.5	0.5	0.5	0.3	0.9	0.9	1.1	1.1	12.6
Other exempt:												
Disabled		39.2	43.0	45.5	45.5	44.7	46.2	54.8	142.7	152.8	151.6	969.7
Over 25 years old		2.8	2.3	2.3	2.2	3.1	4.0	4.6	4.4	4.5	6.3	328.1
Others		3.7	4.2	5.3	7.1	7.9	8.9	9.5	11.3	11.9	15.8	291.3
All exempt not crown		45.7	49.4	53.2	54.7	55.7	59.1	68.9	158.4	169.2	173.7	1,589.0
All exempt vehicles		45.9	49.8	53.7	55.3	56.2	59.4	69.8	159.3	170.2	174.8	1,601.6

(h) Special vehicles group: Tax classes 14 and 15												Thousands
		1992	1993	1994	1995	1996	1997	1998	1999	2000	2001	All years
Special vehicles group		1.0	1.4	2.1	2.7	2.8	3.5	3.9	4.3	4.8	6.7	45.0

Table 5 Motor vehicles currently licensed 2001: by propulsion type

Thousands

<u>Taxation class:</u>	<u>Petrol</u>	<u>Diesel</u>	<u>Petrol/Gas</u>	<u>Gas/GasBi- Fuel/ Gas- Diesel</u>	<u>Electric & Hybrid- Electric</u>	<u>Others 1</u>	<u>All</u>
Private and light goods	21,007.9	5,407.6	22.5	4.1	0.5	0.0	26,442.6
of which: body type cars	20,555.8	3,318.6	21.1	2.8	0.5	0.0	23,898.8
Motor cycles scooters and mopeds	880.6	0.8	-	0.1	0.1	0.0	881.7
Bus	1.4	87.0	0.1	0.1	0.0	0.0	88.6
Goods	2.6	419.2	-	0.2	0.0	0.0	422.0
Special concessionary group	7.0	215.0	0.1	0.1	10.1	0.2	232.5
Special vehicles group	0.6	42.9	0.5	0.9	0.1	-	45.0
Other vehicles	18.3	14.8	-	-	0.0	0.0	33.1
Exempt vehicles	1,300.7	294.1	0.7	0.5	4.2	1.4	1,601.6
All vehicles	23,219.0	6,481.5	24.0	6.0	15.1	1.6	29,747.1
of which:							
Body type cars: All	21,641.1	3,459.5	21.5	2.9	0.8	0.1	25,125.9
Body type cars: Company	1,785.4	651.8	2.9	1.1	0.3	-	2,441.6

1 Steam, Fuel cells.

Table 6 Vehicles currently licensed and unlicensed¹: 2001
with details of year of registration and most recent taxation activity

Thousands

Year of first registration	Licensed on 31/12/01	Unlicensed on 31/12/01	Licensing rate %	of those unlicensed			Last taxed in 1999 or before
				Now retaxed	Last taxed in 2001	Last taxed in 2000	
Motorcars							
Pre 1979	278	9,963	3	60	48	44	9,811
1979	20	1,651	1	8	9	11	1,624
1980	23	1,472	2	9	11	15	1,437
1981	30	1,453	2	9	17	25	1,401
1982	54	1,522	3	15	35	52	1,420
1983	93	1,712	5	21	63	93	1,534
1984	138	1,617	8	27	94	133	1,363
1985	220	1,617	12	37	143	190	1,247
1986	341	1,533	18	46	195	232	1,060
1987	530	1,478	26	59	260	272	887
1988	848	1,356	38	75	326	279	677
1989	1,178	1,119	51	80	322	224	493
1990	1,263	736	63	65	229	131	311
1991	1,158	437	73	45	137	69	186
1992	1,264	330	79	37	101	47	146
1993	1,497	274	85	33	84	36	121
1994	1,664	235	88	30	72	30	104
1995	1,735	197	90	27	64	24	82
1996	1,843	170	92	26	60	22	62
1997	2,001	157	93	30	63	23	40
1998	2,096	177	92	44	84	21	28
1999	2,146	113	95	28	56	22	8
2000	2,234	104	96	35	59	9	0
2001	2,471	110	96	61	49	0	0
All years	25,126	29,534	46	908	2,579	2,005	24,042
Motorcycles							
Pre 1979	16	1,187	1	12	6	6	1,163
1979	7	266	3	4	3	3	256
1980	10	300	3	6	4	4	286
1981	11	264	4	6	4	4	249
1982	10	224	4	5	4	4	210
1983	8	169	5	4	4	4	157
1984	9	139	6	4	4	4	127
1985	10	117	8	4	5	5	103
1986	11	96	10	4	5	5	83
1987	12	80	13	4	5	4	66
1988	16	75	17	5	6	5	59
1989	20	78	20	6	7	6	59
1990	23	72	24	6	8	6	51
1991	22	55	29	6	7	5	37
1992	22	43	33	6	6	4	27
1993	22	36	38	5	6	4	21
1994	26	37	42	6	7	4	20
1995	31	37	45	6	8	5	18
1996	44	46	49	9	11	6	19
1997	66	56	54	12	17	9	18
1998	84	61	58	13	21	11	16
1999	109	60	65	12	24	19	4
2000	130	53	71	12	37	5	0
2001	164	14	92	5	9	0	0
All years	882	3,565	20	161	220	134	3,050

1 On DVLA vehicle files. This excludes vehicles registered in Great Britain and subsequently exported but retains vehicles which have been scrapped.

Table 6 (continued)

Thousands

Year of first registration	Licensed on 31/12/01	Unlicensed on 31/12/01	Licensing rate %	of those unlicensed			Last taxed in 1999 or before
				Now retaxed	Last taxed in 2001	Last taxed in 2000	
Goods							
Pre 1979	1	207	0	-	-	-	206
1979	-	60	0	-	-	-	60
1980	-	46	1	-	-	-	46
1981	-	33	1	-	-	-	33
1982	1	34	2	-	-	-	33
1983	1	38	3	-	1	1	36
1984	2	39	5	1	1	1	36
1985	4	40	9	1	2	2	35
1986	5	38	11	1	2	2	33
1987	8	38	18	2	3	3	30
1988	13	42	24	2	4	5	31
1989	17	40	30	3	5	5	27
1990	14	25	37	2	4	3	15
1991	11	14	44	1	3	2	8
1992	13	13	51	1	3	2	6
1993	18	13	58	1	3	2	6
1994	26	14	65	2	4	3	6
1995	33	14	70	2	4	3	5
1996	33	11	75	2	4	2	3
1997	34	7	83	2	3	1	1
1998	42	7	86	2	3	1	1
1999	45	3	94	1	1	-	-
2000	49	1	97	1	1	-	0
2001	50	1	99	-	-	0	0
All years	422	778	35	28	53	42	656
Buses							
Pre 1979	2.2	39.8	5	0.5	0.7	0.8	37.8
1979	0.9	4.7	16	0.2	0.4	0.3	3.8
1980	1.6	4.2	27	0.3	0.5	0.4	3.0
1981	1.5	3.0	34	0.2	0.4	0.3	2.0
1982	1.8	2.3	44	0.2	0.3	0.3	1.5
1983	2.2	1.9	54	0.2	0.3	0.2	1.1
1984	2.2	1.6	57	0.2	0.3	0.2	1.0
1985	1.9	1.6	54	0.1	0.2	0.2	1.2
1986	1.9	3.2	38	0.2	0.3	0.3	2.4
1987	1.8	3.2	36	0.2	0.4	0.4	2.3
1988	3.0	2.2	58	0.2	0.5	0.4	1.2
1989	3.8	1.6	70	0.2	0.4	0.3	0.7
1990	3.5	1.2	74	0.2	0.3	0.2	0.5
1991	2.6	0.8	77	0.1	0.2	0.1	0.3
1992	2.7	0.5	83	0.1	0.2	0.1	0.2
1993	3.4	0.5	87	0.1	0.2	0.1	0.2
1994	4.2	0.4	90	0.1	0.1	0.1	0.2
1995	5.4	0.5	92	0.1	0.2	0.1	0.2
1996	6.2	0.5	93	0.1	0.2	0.1	0.1
1997	6.4	0.4	94	0.1	0.2	0.1	0.1
1998	7.3	0.4	94	0.1	0.2	0.1	0.1
1999	7.6	0.5	93	0.2	0.3	0.1	-
2000	7.4	0.2	97	0.1	0.1	-	0.0
2001	7.0	0.1	99	-	0.1	0.0	0.0
All years	88.5	75.4	54	3.9	6.8	4.9	59.8

Table 7 Motorcars by engine size currently licensed: 2001 by year of first registration

(a) Petrol propulsion										Thousands
Over	Not over	Pre 1985	1985	1986	1987	1988	1989	1990	1991	1992
	700 cc	4.6	0.8	1.4	1.9	1.6	1.2	0.5	-	0.1
700 cc	1,000 cc	75.4	24.5	37.9	57.7	92.2	105.9	97.9	74.9	49.9
1,000 cc	1,200 cc	92.1	29.4	40.4	57.0	89.7	118.3	137.2	132.5	160.8
1,200 cc	1,500 cc	135.6	55.7	84.8	127.9	208.6	303.3	330.2	298.5	339.7
1,500 cc	1,800 cc	115.7	44.9	78.5	136.6	232.8	323.7	354.2	328.4	312.4
1,800 cc	2,000 cc	52.7	25.0	39.4	66.7	112.6	179.2	192.6	173.1	195.5
2,000 cc	2,500 cc	45.4	14.2	24.3	27.7	28.6	31.5	27.0	21.4	20.9
2,500 cc	3,000 cc	42.1	8.5	10.4	16.0	23.1	32.1	29.5	19.7	19.6
3,000 cc		59.3	7.6	8.4	10.6	16.8	20.0	18.7	13.6	14.3
Unknown or not stated		0.6	-	-	-	-	-	0.0	-	-
All capacities ¹		623.5	210.6	325.5	502.1	806.1	1,115.3	1,187.8	1,062.3	1,113.3

(b) Diesel propulsion										Thousands
Over	Not over	Pre 1985	1985	1986	1987	1988	1989	1990	1991	1992
	700 cc	-	0.0	0.0	-	0.0	-	-	0.0	0.0
700 cc	1,000 cc	-	0.1	0.1	0.1	0.1	0.1	0.1	0.1	0.2
1,000 cc	1,200 cc	-	-	-	-	-	-	-	-	-
1,200 cc	1,500 cc	0.1	-	-	-	0.1	1.4	2.8	2.7	6.1
1,500 cc	1,800 cc	3.3	5.0	8.8	13.8	19.8	30.2	36.1	47.6	70.4
1,800 cc	2,000 cc	0.7	1.1	1.9	6.2	9.9	16.9	21.0	27.5	52.3
2,000 cc	2,500 cc	4.9	1.9	3.1	5.9	8.7	9.8	11.0	12.6	15.9
2,500 cc	3,000 cc	1.7	1.0	1.3	1.2	2.6	3.2	3.7	4.0	3.5
3,000 cc		2.0	0.4	0.4	0.4	0.6	0.7	0.6	0.5	2.4
Unknown or not stated		-	0.0	-	0.0	0.0	0.0	-	0.0	0.0
All capacities ¹		12.8	9.5	15.7	27.5	41.7	62.3	75.3	95.1	150.8

(c) Petrol/gas propulsion										Thousands
Over	Not over	Pre 1985	1985	1986	1987	1988	1989	1990	1991	1992
	1500cc	-	-	-	-	-	-	-	-	-
1,500 cc	1,800 cc	-	-	-	-	-	-	-	-	-
1,800 cc	2,000 cc	-	-	-	-	-	-	0.1	-	0.1
2,000 cc	2,500 cc	-	-	-	-	-	-	-	-	-
2,500 cc	3,000 cc	-	-	-	-	-	-	-	-	-
3,000 cc		0.1	-	0.1	0.1	0.1	0.1	0.1	0.1	0.1
Unknown or not stated		0.0	0.0	0.0	0.0	0.0	0.0	0.0	0.0	0.0
All capacities ¹		0.2	0.1	0.1	0.1	0.2	0.2	0.3	0.2	0.3

(d) All propulsion types ²										Thousands
Over	Not over	Pre1985	1985	1986	1987	1988	1989	1990	1991	1992
	700 cc	4.6	0.8	1.4	1.9	1.6	1.2	0.5	0.1	0.1
700 cc	1,000 cc	75.5	24.6	38.0	57.8	92.3	105.9	98.0	75.0	50.1
1,000 cc	1,200 cc	92.1	29.4	40.4	57.0	89.7	118.3	137.2	132.5	160.8
1,200 cc	1,500 cc	135.7	55.8	84.8	127.9	208.7	304.7	333.0	301.2	345.8
1,500 cc	1,800 cc	119.0	49.9	87.3	150.3	252.6	354.0	390.3	376.1	382.8
1,800 cc	2,000 cc	53.4	26.1	41.2	72.9	122.6	196.2	213.7	200.7	247.9
2,000 cc	2,500 cc	50.3	16.1	27.4	33.6	37.3	41.4	38.0	34.1	36.8
2,500 cc	3,000 cc	43.8	9.5	11.8	17.2	25.7	35.3	33.3	23.8	23.1
3,000 cc		61.4	8.1	8.9	11.1	17.4	20.9	19.5	14.3	16.9
Unknown or not stated		0.7	-	-	-	-	-	-	-	-
All capacities ¹		636.6	220.2	341.3	529.8	848.0	1,177.9	1,263.5	1,157.7	1,264.4

1 Includes unknown cases where an engine capacity is not applicable.

2 Includes Electricity, Hybrid Electric, Steam, Gas/Gas-Bi-Fuel, Gas-Diesel

Table 7 (continued)

(a) Petrol propulsion												Thousands
Over	Not over	1993	1994	1995	1996	1997	1998	1999	2000	2001	All	
	700 cc	0.5	0.8	0.3	0.1	0.1	0.3	1.2	3.8	6.4	25.7	
700 cc	1,000 cc	63.3	69.7	68.0	62.7	66.0	89.6	130.6	152.5	124.8	1,443.5	
1,000 cc	1,200 cc	171.1	178.8	206.6	188.9	158.1	114.2	135.1	136.0	196.1	2,342.1	
1,200 cc	1,500 cc	358.9	381.7	388.4	447.8	503.3	520.3	471.1	518.3	545.5	6,019.6	
1,500 cc	1,800 cc	354.3	371.2	400.8	450.4	512.8	592.6	616.3	623.9	663.5	6,512.9	
1,800 cc	2,000 cc	212.0	214.5	213.6	250.4	288.6	291.0	305.6	301.9	270.7	3,385.1	
2,000 cc	2,500 cc	26.0	44.7	49.1	52.9	80.1	88.8	95.5	85.5	115.9	879.6	
2,500 cc	3,000 cc	19.9	22.6	34.8	34.5	36.8	41.1	48.0	47.3	51.0	537.2	
3,000 cc		19.4	21.5	26.7	33.3	42.4	46.2	44.7	43.3	47.4	494.5	
Unknown or not stated		-	-	-	-	-	-	-	-	-	0.8	
All capacities ¹		1,225.4	1,305.5	1,388.3	1,521.1	1,688.4	1,784.1	1,848.1	1,912.5	2,021.2	21,641.1	
(b) Diesel propulsion												Thousands
Over	Not over	1993	1994	1995	1996	1997	1998	1999	2000	2001	All	
	700 cc	0.0	-	-	-	0.0	-	0.2	0.5	0.6	1.4	
700 cc	1,000 cc	0.1	-	-	-	-	-	-	0.2	0.2	1.6	
1,000 cc	1,200 cc	-	-	-	-	-	0.1	-	-	-	0.4	
1,200 cc	1,500 cc	27.4	29.2	8.7	2.2	1.8	1.4	0.8	2.2	10.4	97.3	
1,500 cc	1,800 cc	100.8	136.9	150.4	112.3	82.1	64.7	52.5	55.5	53.1	1,043.3	
1,800 cc	2,000 cc	109.1	139.6	124.9	148.5	162.6	178.4	178.0	192.8	290.2	1,661.7	
2,000 cc	2,500 cc	24.7	36.6	43.7	40.3	44.5	40.9	40.9	39.7	57.0	442.1	
2,500 cc	3,000 cc	4.8	10.6	13.8	13.9	15.3	19.7	18.7	18.4	24.3	161.6	
3,000 cc		4.4	3.8	3.3	3.2	3.2	3.0	2.7	7.3	11.2	50.2	
Unknown or not stated		0.0	0.0	0.0	0.0	0.0	-	-	0.0	-	-	
All capacities ¹		271.4	356.7	344.9	320.4	309.6	308.4	293.8	316.5	447.0	3,459.5	
(c) Petrol/Gas propulsion												Thousands
Over	Not over	1993	1994	1995	1996	1997	1998	1999	2000	2001	All	
	1500cc	-	0.1	0.5	-	-	0.1	0.1	0.1	-	1.0	
1,500 cc	1,800 cc	-	0.2	0.1	0.1	0.1	0.2	0.1	0.4	0.2	1.6	
1,800 cc	2,000 cc	0.1	0.1	0.1	0.1	0.1	0.1	0.1	0.4	-	1.6	
2,000 cc	2,500 cc	-	0.1	-	0.1	1.0	1.5	1.4	-	-	4.3	
2,500 cc	3,000 cc	-	0.3	0.1	-	-	-	0.2	1.1	0.2	2.1	
3,000 cc		0.2	0.7	0.7	1.0	1.0	1.6	1.8	2.6	0.4	10.9	
Unknown or not stated		0.0	0.0	0.0	0.0	0.0	0.0	0.0	0.0	0.0	0.0	
All capacities ¹		0.4	1.4	1.6	1.4	2.4	3.5	3.7	4.7	0.8	21.5	
(d) All propulsion types ²												Thousands
Over	Not over	1993	1994	1995	1996	1997	1998	1999	2000	2001	All	
	700 cc	0.5	0.8	0.3	0.1	0.1	0.3	1.4	4.3	7.0	27.1	
700 cc	1,000 cc	63.4	69.7	68.0	62.7	66.1	89.7	130.6	152.7	125.0	1,445.2	
1,000 cc	1,200 cc	171.1	178.8	206.6	189.0	158.2	114.3	135.2	136.1	196.1	2,342.7	
1,200 cc	1,500 cc	386.4	410.9	397.6	450.0	505.2	521.8	472.0	520.6	556.5	6,118.6	
1,500 cc	1,800 cc	455.1	508.3	551.3	562.9	595.1	657.5	668.9	679.8	718.0	7,559.3	
1,800 cc	2,000 cc	321.2	354.2	338.7	399.0	451.5	469.6	483.7	495.1	561.0	5,048.7	
2,000 cc	2,500 cc	50.7	81.4	92.9	93.3	125.6	131.2	137.9	125.3	172.9	1,326.2	
2,500 cc	3,000 cc	24.7	33.6	48.6	48.5	52.1	60.9	66.9	66.7	75.5	701.0	
3,000 cc		24.0	26.0	30.8	37.6	46.7	50.8	49.2	53.2	59.0	556.0	
Unknown or not stated		-	-	-	-	-	0.1	0.1	0.1	0.1	1.1	
All capacities ¹		1,497.3	1,663.6	1,734.9	1,843.2	2,000.6	2,096.2	2,145.9	2,233.9	2,471.1	25,125.9	

Table 8 Motor vehicles licensed by taxation class: county, region and UA¹: 2001

Thousands

Country/region/local authority	Private and light goods		Motorcycles	Public	Goods	Special
	Body type cars	Other Vehicles	scooters and mopeds	transport vehicles		Concession
Great Britain	23,898.8	2,543.8	881.7	88.6	422.1	232.5
Vehicle Under Disposal	359.0	35.8	12.1	0.7	5.1	3.6
County Unknown	41.3	8.3	1.3	0.2	2.3	2.0
England	20,568.9	2,204.6	793.3	72.0	367.8	181.1
North Eastern Region	821.3	75.1	26.8	4.5	13.8	8.0
Darlington UA	36.2	4.6	1.3	0.1	0.6	0.4
Durham	167.8	14.9	5.6	1.4	3.4	2.2
Hartlepool UA	26.5	2.2	0.8	0.1	0.3	0.1
Middlesbrough UA	40.1	3.1	1.2	0.1	0.4	0.1
Northumberland	120.7	10.5	4.2	0.3	1.8	3.5
Redcar And Cleveland UA	48.7	4.8	2.0	0.1	0.5	0.3
Stockton-On-Tees UA	65.9	6.1	2.5	0.4	1.5	0.6
Tyne And Wear Metropolitan Area	315.3	29.0	9.2	1.9	5.4	0.9
Yorkshire And Humberside Region	1,817.5	177.2	72.6	7.6	38.5	23.0
East Riding Of Yorkshire UA	135.9	12.8	6.4	0.3	2.5	4.8
Kingston Upon Hull UA	66.2	8.1	3.9	0.6	2.5	0.1
North East Lincolnshire UA	54.4	5.7	2.6	0.1	1.0	0.2
North Lincolnshire UA	64.5	6.8	3.7	0.2	1.5	1.5
North Yorkshire	260.2	28.9	10.2	0.8	6.6	10.5
South Yorkshire Metropolitan Area	429.8	40.1	16.2	2.2	7.4	2.6
West Yorkshire Metropolitan Area	738.9	69.4	25.1	3.1	16.4	2.6
York UA	67.5	5.5	4.4	0.2	0.5	0.7
East Midland Region	1,773.7	219.0	74.2	7.0	41.6	27.7
Derby UA	91.1	10.8	3.7	0.3	1.0	0.1
Derbyshire	317.5	70.5	14.7	2.2	12.2	5.6
Leicester City UA	105.0	10.7	2.2	0.4	1.4	0.2
Leicestershire	276.9	25.9	12.1	0.9	5.2	3.2
Lincolnshire	285.5	32.6	13.7	1.1	5.7	12.1
Northamptonshire	303.0	29.6	11.2	0.9	8.8	2.6
Nottingham UA	72.9	8.5	2.8	0.7	2.0	0.1
Nottinghamshire	305.4	28.9	13.2	0.5	5.2	3.2
Rutland UA	16.3	1.5	0.7	-	0.3	0.5
East Of England Region	2,546.1	276.3	103.3	7.1	47.1	30.2
Bedfordshire	175.2	17.4	6.8	0.3	4.1	1.6
Cambridgeshire	265.3	30.8	11.0	0.8	5.5	5.6
Essex	616.0	67.4	24.2	1.6	9.1	5.2
Hertfordshire	554.6	55.4	18.1	0.9	9.1	2.4
Luton UA	63.9	6.3	1.9	1.0	0.9	0.1
Norfolk	371.3	44.4	18.0	1.3	6.1	8.8
Peterborough UA	63.4	6.5	2.6	0.2	1.0	0.5
Southend-On-Sea UA	64.1	6.0	2.6	0.1	0.5	-
Suffolk	312.9	35.8	15.5	0.9	8.6	5.9
Thurrock UA	59.4	6.3	2.5	0.2	2.3	0.1
South Eastern Region	3,885.0	384.9	149.8	9.9	51.5	22.5
Bracknell Forest UA	66.1	6.0	2.2	0.8	0.8	0.1
Brighton And Hove UA	81.5	7.6	3.2	0.3	1.1	0.1
Buckinghamshire	257.3	29.0	7.7	0.5	3.1	1.7
East Sussex	219.9	22.8	8.4	1.2	1.9	1.5
Hampshire	631.4	60.5	28.3	0.9	6.4	5.9
Isle Of Wight UA	55.5	7.1	3.8	0.2	0.4	0.5
Kent	586.5	59.1	24.0	1.6	8.4	3.9
Medway UA	100.9	8.8	4.6	0.2	1.3	0.2
Milton Keynes UA	133.2	13.5	3.7	0.6	7.9	0.4
Oxfordshire	279.9	28.6	12.1	0.9	3.8	3.1
Portsmouth UA	64.9	7.6	2.8	0.1	0.5	0.2
Reading UA	60.1	13.3	2.0	0.3	1.7	0.1
Slough UA	100.1	8.8	1.6	0.1	2.4	0.1
Southampton UA	79.8	7.6	3.7	0.4	0.9	0.1
Surrey	552.6	47.4	20.4	0.8	5.4	1.4
West Berkshire UA	90.1	8.0	3.0	0.1	0.8	0.8
West Sussex	377.6	36.7	13.6	0.9	3.1	2.1
Windsor And Maidenhead UA	71.9	7.1	2.0	0.1	0.9	0.2

Table 8 (continued)

Thousands

Country/region/local authority	Private and light goods		Motor cycles scooters and mopeds	Public transport vehicles	Goods	Special concession
	Body type Cars	Other vehicles				
Somerset	234.2	28.5	11.7	0.8	6.2	5.1
South Gloucestershire UA	117.3	10.7	5.9	0.2	1.9	0.8
Swindon UA	191.9	24.6	4.7	0.2	3.3	0.3
Torbay UA	51.7	5.1	2.8	0.2	0.3	0.1
Wiltshire	210.9	22.0	9.6	0.4	3.0	3.7
West Midland Region	2,361.5	300.0	73.2	8.0	53.4	18.8
Herefordshire UA	80.3	11.2	3.1	0.3	1.5	3.5
Shropshire	131.5	20.6	4.9	0.5	3.4	4.5
Staffordshire	361.0	35.9	14.4	1.3	9.3	4.3
Stoke On Trent UA	78.2	9.4	3.0	0.6	1.5	0.2
Telford And Wrekin UA	63.1	5.3	2.6	0.1	1.0	0.5
Warwickshire	252.5	26.6	9.3	0.6	7.9	2.6
West Midlands Metropolitan Area	1,133.6	163.3	25.9	3.9	24.5	1.2
Worcestershire	261.4	27.6	10.1	0.7	4.2	2.1
North Western Region	2,635.1	290.9	83.9	10.5	60.5	18.0
Blackburn With Darwen UA	43.8	4.0	1.4	0.2	1.0	0.1
Blackpool UA	46.1	4.3	1.9	0.2	0.3	0.1
Cheshire	315.9	24.6	11.7	0.6	7.1	3.4
Cumbria	212.6	24.2	8.0	1.0	4.5	6.3
Greater Manchester Metropolitan Area	1,028.4	139.7	25.4	4.3	30.1	1.9
Halton UA	44.3	3.7	1.6	0.2	0.9	0.1
Lancashire	446.4	45.7	17.3	1.5	9.9	4.9
Merseyside Metropolitan Area	414.8	37.0	13.5	2.2	5.7	1.0
Warrington UA	82.8	7.7	3.0	0.2	1.0	0.2
Scotland	1,821.1	175.5	41.6	10.1	29.9	30.6
Aberdeen City UA	78.3	6.5	2.2	0.6	1.3	0.3
Aberdeenshire UA	102.5	11.1	3.2	0.4	2.1	5.1
Angus UA	44.2	4.2	1.3	0.1	0.6	1.8
Argyll And Bute UA	34.2	4.3	0.8	0.2	0.5	0.7
City Of Dundee UA	41.7	3.5	0.8	0.3	0.9	0.3
City Of Edinburgh UA	169.4	13.0	3.7	1.3	0.9	0.5
City Of Glasgow UA	148.3	20.5	2.0	1.7	2.5	0.4
Clackmannanshire UA	17.7	1.4	0.5	0.1	0.2	0.1
Comhairle Nan Eilean Siar UA	9.6	1.8	0.2	0.1	0.3	0.1
Dumfries And Galloway UA	58.9	7.3	1.9	0.2	1.5	3.4
East Ayrshire UA	40.3	3.8	0.8	0.2	0.7	1.0
East Dunbartonshire UA	43.8	2.7	0.7	0.1	0.2	0.1
East Lothian UA	34.5	3.1	1.0	0.1	0.4	0.8
East Renfrewshire UA	36.7	1.6	0.6	0.1	0.2	0.2
Falkirk UA	54.0	4.3	1.3	0.2	1.0	0.4
Fife UA	131.6	10.4	3.6	0.6	1.4	1.8
Highland UA	82.6	11.1	2.5	0.4	1.4	2.5
Inverclyde UA	25.7	1.3	0.5	0.2	0.2	0.1
Midlothian UA	30.2	3.0	0.9	0.1	0.4	0.3
Moray UA	34.9	3.5	1.3	0.1	0.5	1.3
North Ayrshire UA	44.6	3.4	1.0	0.2	0.6	0.5
North Lanarkshire UA	98.3	8.7	1.3	0.6	2.8	0.3
Orkney Islands UA	7.9	1.6	0.3	0.1	0.2	0.8
Perth And Kinross UA	57.7	6.2	1.5	0.2	0.8	2.3
Renfrewshire UA	57.1	3.9	1.2	0.5	1.2	0.3
Shetland Islands UA	8.6	2.2	0.3	0.1	0.3	0.3
South Ayrshire UA	43.0	3.4	1.0	0.4	0.6	0.7
South Lanarkshire UA	103.3	8.8	1.7	0.5	2.2	0.9
Stirling UA	49.9	5.7	0.7	0.1	1.1	0.6
The Scottish Borders UA	45.9	5.6	1.0	0.1	1.5	2.3
West Dunbartonshire UA	27.1	2.0	0.5	0.1	0.2	0.1
West Lothian UA	58.7	5.5	1.6	0.2	1.3	0.4
Wales	1,108.4	119.5	33.2	5.6	17.0	15.1
Blaenau Gwent UA	21.2	1.7	0.6	0.1	0.2	-
Bridgend UA	48.0	3.9	1.4	0.2	0.7	0.2
Caerphilly UA	58.1	5.0	1.8	0.2	0.8	0.2
Cardiff UA	107.5	9.2	2.1	0.4	1.1	0.2
Carmarthenshire UA	69.7	8.9	2.1	0.3	1.6	1.8
Ceredigion UA	29.2	5.0	0.8	0.2	0.5	1.3
Conwy UA	46.3	5.7	1.5	0.5	0.6	0.7
Denbighshire UA	37.2	4.7	1.0	0.2	0.6	0.7
Flintshire UA	66.3	6.6	2.3	0.2	1.5	0.5
Gwynedd UA	46.2	7.4	1.1	0.3	0.8	1.3
Isle Of Anglesey UA	29.7	3.8	0.9	0.1	0.4	0.7
Merthyr Tydfil UA	16.2	1.5	0.4	0.1	0.2	-
Monmouthshire UA	39.9	4.0	1.4	0.1	0.6	0.8
Neath Port Talbot UA	46.1	4.2	1.8	0.2	0.5	0.2
Newport UA	48.3	5.2	1.5	0.1	1.1	0.2
Pembrokeshire UA	48.3	6.8	1.6	0.2	0.8	1.7
Powys UA	56.5	10.1	1.7	0.3	1.5	3.0
Rhondda, Cynon, Taff UA	75.0	6.5	2.1	0.6	0.9	0.2
Swansea UA	87.5	8.2	2.6	0.7	0.9	0.4
The Vale Of Glamorgan UA	49.8	3.5	1.5	0.1	0.6	0.3
Torfaen UA	32.8	3.1	1.1	0.4	0.3	0.1
Wrexham UA	48.9	4.5	1.8	0.2	0.7	0.6

Table 8 (continued)

Thousands

Country/region/local authority	Special vehicles group	Other vehicles	Crown & other exempt vehicles	Of which: body type cars		Per cent company
				All vehicles	All	
Great Britain	45.0	33.1	1,601.6	29,747.1	25,125.9	10
Vehicle Under Disposal	0.5	0.5	25.4	442.7	380.5	0
County Unknown	0.3	0.2	21.0	77.0	50.6	14
England	34.6	29.0	1,280.5	25,531.9	21,539.3	10
North Eastern Region	1.6	1.1	82.6	1,034.7	893.0	6
Darlington UA	0.1	-	2.8	46.1	38.5	6
Durham	0.3	0.3	20.9	216.9	186.0	4
Hartlepool UA	0.1	-	3.3	33.4	29.4	3
Middlesbrough UA	-	0.1	4.4	49.3	43.9	5
Northumberland	0.3	0.2	9.6	151.1	128.2	4
Redcar And Cleveland UA	-	0.1	4.5	61.0	52.6	3
Stockton-On-Tees UA	0.1	0.1	5.0	82.2	70.2	4
Tyne And Wear Metropolitan Area	0.7	0.4	32.1	394.7	344.1	8
Yorkshire And Humberside Region	4.2	3.4	141.8	2,285.7	1,930.8	8
East Riding Of Yorkshire UA	0.4	0.3	9.3	172.6	142.5	4
Kingston Upon Hull UA	0.2	0.3	7.6	89.4	72.5	8
North East Lincolnshire UA	0.1	0.1	3.2	67.4	57.0	5
North Lincolnshire UA	0.3	0.2	4.8	83.5	67.8	5
North Yorkshire	0.9	0.4	17.5	336.1	270.6	8
South Yorkshire Metropolitan Area	0.8	0.8	43.6	543.6	467.8	6
West Yorkshire Metropolitan Area	1.4	1.2	52.7	910.9	782.9	10
York UA	0.1	0.1	3.1	82.2	69.6	5
East Midland Region	4.4	3.1	123.2	2,273.8	1,863.0	9
Derby UA	0.2	0.2	5.2	112.5	95.2	16
Derbyshire	1.0	0.7	25.1	449.4	335.9	8
Leicester City UA	0.1	0.2	5.2	125.4	109.3	26
Leicestershire	0.7	0.4	15.6	340.9	287.5	5
Lincolnshire	0.9	0.6	23.4	375.4	300.8	5
Northamptonshire	0.7	0.4	16.8	374.0	314.3	13
Nottingham UA	0.1	0.1	7.7	95.0	79.3	12
Nottinghamshire	0.8	0.5	23.4	381.1	323.9	5
Rutland UA	-	-	0.8	20.2	16.8	4
East Of England Region	5.3	3.6	135.1	3,154.1	2,639.5	8
Bedfordshire	0.4	0.2	9.1	215.0	181.1	5
Cambridgeshire	0.5	0.4	13.9	333.7	274.0	9
Essex	0.9	0.9	34.6	759.9	641.0	5
Hertfordshire	0.7	0.5	20.1	661.9	568.9	17
Luton UA	0.1	0.1	2.7	76.8	66.1	5
Norfolk	1.4	0.7	24.7	476.6	387.2	7
Peterborough UA	0.1	0.1	3.6	78.1	66.2	6
Southend-On-Sea UA	-	0.1	3.0	76.4	66.5	4
Suffolk	1.0	0.6	20.4	401.6	326.4	5
Thurrock UA	0.1	0.1	3.1	74.3	62.0	4
South Eastern Region	4.7	4.7	178.4	4,691.6	4,006.4	10
Bracknell Forest UA	-	-	1.7	77.9	67.3	24
Brighton And Hove UA	-	0.1	4.2	97.9	85.0	5
Buckinghamshire	0.2	0.2	9.9	309.6	263.9	10
East Sussex	0.2	0.3	13.2	269.4	229.1	4
Hampshire	1.1	0.8	29.5	764.8	650.8	8
Isle Of Wight UA	0.1	0.1	4.5	72.2	58.5	3
Kent	0.7	1.0	33.7	718.9	610.0	5
Medway UA	0.2	0.2	4.9	121.3	104.4	3
Milton Keynes UA	-	0.1	4.4	163.8	136.6	35
Oxfordshire	0.4	0.4	12.9	342.0	288.1	8
Portsmouth UA	-	0.1	3.2	79.4	67.4	10
Reading UA	0.1	0.1	2.2	79.9	61.4	19
Slough UA	0.3	0.1	2.1	115.5	101.6	55
Southampton UA	0.1	0.1	4.6	97.3	83.2	9
Surrey	0.6	0.5	21.5	650.4	567.1	7
West Berkshire UA	0.1	0.1	2.9	105.8	91.9	24
West Sussex	0.5	0.4	18.2	453.1	389.1	9
Windsor And Maidenhead UA	0.1	0.1	2.3	84.7	73.5	8
Wokingham UA	-	0.1	2.5	87.8	77.4	4
London Region	1.7	2.0	105.1	2,845.7	2,461.4	9
South Western Region	4.6	3.8	144.9	2,947.6	2,446.9	10
Bath And North East Somerset UA	0.1	0.1	3.5	86.3	73.6	4
Bournemouth UA	-	0.1	3.6	81.8	70.9	4
Bristol UA	0.3	0.3	8.5	198.8	165.1	17
Cornwall And Isles Of Scilly	0.6	0.6	19.8	288.2	232.5	4
Devon	0.7	0.7	24.0	422.4	340.7	5
Dorset	0.3	0.3	12.2	242.2	200.7	4
Gloucestershire	0.5	0.4	15.6	328.6	276.5	6
North Somerset UA	0.1	0.1	5.2	108.3	92.8	6
Plymouth UA	0.1	0.2	6.1	106.3	91.3	4
Poole UA	-	0.1	4.0	81.1	69.0	5

Table 8 (continued)

Thousands

Country/region/local authority	Special vehicles group	Other vehicles	Crown & other exempt vehicles	Of which body type cars		Per cent company
				All vehicles	All	
Somerset	0.6	0.4	16.7	304.3	244.4	4
South Gloucestershire UA	0.9	0.2	6.1	143.8	121.4	4
Swindon UA	0.1	0.1	4.6	229.8	195.4	61
Torbay UA	-	0.1	3.6	63.7	54.8	3
Wiltshire	0.3	0.3	11.6	261.8	217.8	5
West Midland Region	3.8	4.1	150.8	2,973.6	2,478.5	17
Herefordshire UA	0.2	0.1	6.8	107.0	84.1	5
Shropshire	0.4	0.2	10.3	176.2	137.9	5
Staffordshire	0.7	0.6	24.6	452.0	379.4	7
Stoke On Trent UA	0.1	0.2	9.1	102.2	86.4	7
Telford And Wrekin UA	0.1	0.1	4.7	77.5	67.1	6
Warwickshire	0.5	0.4	15.5	315.9	263.6	13
West Midlands Metropolitan Area	1.4	2.1	63.5	1,419.4	1,187.1	27
Worcestershire	0.4	0.4	16.4	323.3	273.0	7
North Western Region	4.3	3.3	218.7	3,325.1	2,819.8	12
Blackburn With Darwen UA	-	0.1	3.9	54.5	47.4	6
Blackpool UA	-	0.1	5.2	58.2	50.7	5
Cheshire	0.5	0.4	19.0	383.2	330.2	7
Cumbria	0.7	0.4	18.5	276.1	224.6	10
Greater Manchester Metropolitan Area	1.7	1.1	70.3	1,302.9	1,089.6	21
Halton UA	0.1	-	5.5	56.4	49.3	7
Lancashire	0.7	0.7	35.2	562.5	474.8	5
Merseyside Metropolitan Area	0.5	0.4	55.0	530.1	465.1	5
Warrington UA	0.1	0.1	6.0	101.2	88.1	8
Scotland	7.7	1.9	143.8	2,262.2	1,938.5	9
Aberdeen City UA	0.4	0.1	3.8	93.5	81.3	7
Aberdeenshire UA	0.9	0.1	6.2	131.7	106.1	5
Angus UA	0.2	0.1	3.0	55.4	46.4	5
Argyll And Bute UA	0.2	-	2.0	42.9	35.6	4
City Of Dundee UA	0.2	-	4.0	51.6	45.0	6
City Of Edinburgh UA	0.2	0.1	9.6	198.6	176.3	22
City Of Glasgow UA	0.5	0.1	17.4	193.4	164.6	21
Clackmannanshire UA	0.1	-	1.7	21.8	19.3	4
Comhairle Nan Eilean Siar UA	0.1	-	0.6	12.8	9.9	4
Dumfries And Galloway UA	0.3	0.1	5.5	78.9	62.5	6
East Ayrshire UA	0.2	0.1	3.8	50.8	43.7	5
East Dunbartonshire UA	-	-	2.2	49.8	45.8	3
East Lothian UA	0.1	-	2.5	42.5	36.5	4
East Renfrewshire UA	0.1	-	1.7	41.2	38.2	3
Falkirk UA	0.2	0.1	4.3	65.8	57.8	4
Fife UA	0.4	0.1	10.0	160.0	140.2	4
Highland UA	0.6	0.1	6.3	107.6	86.5	5
Inverclyde UA	-	-	2.2	30.1	27.7	3
Midlothian UA	0.1	-	2.6	37.6	32.4	7
Moray UA	0.2	-	2.2	44.0	36.4	4
North Ayrshire UA	0.1	-	4.4	54.7	48.6	4
North Lanarkshire UA	1.3	0.1	12.3	125.7	109.4	5
Orkney Islands UA	0.1	-	0.9	12.0	8.3	5
Perth And Kinross UA	0.2	0.1	3.3	72.4	59.9	6
Renfrewshire UA	0.1	-	4.8	69.1	61.5	6
Shetland Islands UA	0.1	-	0.6	12.4	8.9	6
South Ayrshire UA	0.1	-	2.9	52.1	45.4	4
South Lanarkshire UA	0.2	0.1	9.8	127.6	112.0	5
Stirling UA	0.1	-	3.4	61.7	52.0	35
The Scottish Borders UA	0.2	0.1	2.8	59.5	47.7	6
West Dunbartonshire UA	-	-	2.5	32.7	29.5	4
West Lothian UA	0.2	0.1	4.6	72.5	62.9	4
Wales	2.0	1.5	130.9	1,433.3	1,217.0	5
Blaenau Gwent UA	-	-	4.1	27.9	25.0	3
Bridgend UA	0.1	-	7.1	61.7	54.4	5
Caerphilly UA	0.1	0.1	9.3	75.5	66.9	3
Cardiff UA	0.1	0.1	8.3	129.0	114.8	9
Cardiganshire UA	0.2	0.1	10.0	94.7	77.4	3
Ceredigion UA	0.1	0.1	3.4	40.6	31.1	4
Conwy UA	0.1	0.1	4.5	59.9	49.8	4
Denbighshire UA	0.1	0.1	4.1	48.6	40.2	4
Flintshire UA	0.1	0.1	5.4	83.0	70.8	6
Gwynedd UA	0.1	0.1	4.7	62.0	49.4	4
Isle Of Anglesey UA	0.1	-	3.2	38.9	32.1	3
Merthyr Tydfil UA	-	-	3.9	22.2	19.9	3
Monmouthshire UA	0.1	0.1	3.0	50.1	42.1	4
Neath Port Talbot UA	0.1	0.1	8.0	61.1	53.3	4
Newport UA	0.1	0.1	4.5	61.1	52.3	4
Pembrokeshire UA	0.1	0.1	5.7	65.2	52.1	4
Powys UA	0.2	0.1	6.2	79.6	59.9	5
Rhondda, Cynon, Taff UA	0.1	0.1	11.7	97.1	85.9	3
Swansea UA	0.1	0.1	9.8	110.3	96.1	7
The Vale Of Glamorgan UA	-	-	3.8	59.8	53.1	3
Torfaen UA	-	-	5.0	42.9	37.2	5
Wrexham UA	0.1	0.1	5.3	62.1	53.3	4

Table 9 Motor vehicles licensed¹ : Historic series: 1903-1990

For detail of years 1991-2001 see table 1

Thousands

Year	Private and light goods ²		Goods vehicles ^{3,4}	Motorcycles and scooters and mopeds ⁵	Public transport vehicles ⁶	Special machines etc ⁷	Other vehicles ⁸	Crown and exempt vehicles ⁹	All vehicles
	Private cars	Other vehicles							
1903	8		4	..	5	17
1909	53		30	36	24	143
1920	187		101	228	75	591
1930	1,056		349	712	101	15	15	24	2,272
1939	2,034		488	418	90	31	3	84	3,148
1946	1,770		560	449	105	146	16	61	3,107
1950	1,979	439	439	643	123	262	24	61	3,970
1951	2,095	457	451	725	123	250	26	63	4,190
1952	2,221	477	450	812	119	270	29	86	4,464
1953	2,446	516	446	889	105	289	30	88	4,809
1954	2,733	566	450	977	97	307	32	88	5,250
1955	3,109	633	462	1,076	92	326	35	89	5,822
1956	3,437	685	471	1,137	89	336	37	95	6,287
1957	3,707	723	473	1,261	87	355	41	96	6,743
1958	4,047	772	461	1,300	86	367	46	96	7,175
1959	4,416	824	473	1,479	83	383	55	96	7,809
1960	4,900	894	493	1,583	84	392	65	101	8,512
1961	5,296	944	508	1,577	82	400	76	106	8,989
1962	5,776	1,002	512	1,567	84	401	83	107	9,532
1963	6,462	1,092	535	1,546	86	412	88	115	10,336
1964	7,190	1,184	551	1,534	86	421	90	120	11,176
1965	7,732	1,240	584	1,420	86	417	91	127	11,697
1966	8,210	1,283	577	1,239	85	399	87	142	12,022
1967	8,882	1,358	593	1,190	85	416	89	147	12,760
1968	9,285	1,388	580	1,082	89	409	92	157	13,082
1969	9,672	1,408	547	993	92	398	90	162	13,362
1970	9,971	1,421	545	923	93	385	89	121	13,548
1971	10,443	1,452	542	899	96	380	92	126	14,030
1972	11,006	1,498	525	866	95	371	95	128	14,584
1973	11,738	1,559	540	887	96	373	97	137	15,427
1974	11,917	1,547	539	918	96	380	96	149	15,642
1975	12,526	1,592	553	1,077	105	384	108	166	16,511
1976	13,184	1,626	563	1,175	110	387	117	156	17,318
1977	13,220	1,591	559	1,190	110	393	115	167	17,345
1978	13,626	1,597	549	1,194	110	394	111	177	17,758
1979	14,162	1,623	561	1,292	111	402	106	359	18,616
1980	14,660	1,641	507	1,372	110	397	100	412	19,199
1981	14,867	1,623	489	1,371	110	365	95	427	19,347
1982	15,264	1,624	477	1,370	111	371	91	454	19,762
1983	15,543	1,692	488	1,290	113	376	86	621	20,209
1984	16,055	1,752	490	1,225	116	375	82	670	20,765
1985	16,454	1,805	485	1,148	120	374	78	695	21,159
1986	16,981	1,880	484	1,065	125	371	73	720	21,699
1987	17,421	1,952	485	978	129	374	68	744	22,152
1988	18,432	2,096	502	912	132	383	83	761	23,302
1989	19,248	2,199	505	875	122	384	77	785	24,196
1990	19,737	2,247	482	833	115	376	72	808	24,673

- 1 The annual vehicle census of licensed vehicles has been taken as follows: 1903-1910 at 31 December; 1911-1920 at 31 March; 1921-1925 for the highest quarter; 1926-1938 for the September quarter; 1939-1945 at 31 August; 1946-1976 for the September quarter; 1977 census results are estimates; 1978 onward at 31 December.
- 2 From 1950 onwards, retrospective counts within the October 1982 taxation classes have been estimated. For years up to 1990, retrospective counts within these new taxation classes have been estimated.
- 3 Includes agricultural vans and lorries, showmens' goods vehicles licensed to draw trailers (note 2 applies).
- 4 Excludes electric goods vehicles which are now exempt from licence duty.
- 5 Includes scooters and mopeds.
- 6 Includes taxis. Prior to 1969, tram cars were included.
- 7 Includes agricultural tractors, combine harvesters, mowing machines, digging machines, mobile cranes and works trucks.
- 8 Includes three-wheelers, showmens' haulage and recovery vehicles.
- 9 Includes electric vehicles which during this period were exempt from licence duty and personal and direct export vehicles.

Table 10 Motor vehicles registered for the first time: by taxation group: 1991-2001 ¹

Thousands

Year	Private and light goods			Public transportation vehicles			
	Body type cars	Other vehicles	Motor cycles scooters and mopeds	Goods ²	Hackney taxation class ³	Of which: Bus taxation class ⁴	Special machines/ special concession ⁶
1991	1,536.6	171.9	76.5	28.6	5.2	3.0 ⁵	26.1
1992	1,528.0	166.4	65.6	28.7	5.1	3.1 ⁵	24.1
1993	1,694.6	158.8	58.4	32.8	5.4	3.6 ⁵	30.0
1994	1,809.1	182.6	64.6	41.1	6.7	4.2 ⁵	35.3
1995	1,828.3	195.7	68.9	48.0	..	5.2 ⁵	33.3 ⁷
1996	1,888.4	205.0	89.6	45.5	..	6.5	25.7
1997	2,015.9	228.4	121.7	41.8	..	6.6	21.7
1998	2,123.5	244.5	143.7	49.1	..	7.4	15.2
1999	2,100.4	241.6	168.4	48.3	..	8.0	24.9
2000	2,174.9	254.9	182.9	50.4	..	7.5	24.0
2001	2,431.8	277.9	177.1	48.6	..	6.8	26.7

continued

body type cars in all taxation classes

of which:

Year	All other vehicles ⁸	All vehicles	All body type cars	Company	Diesel	Per cent company	Per cent diesel
1991	76.6	1,921.5	1,600.1	833.1	137.4	52	9
1992	83.9	1,901.8	1,599.1	826.7	195.8	52	12
1993	93.8	2,073.9	1,776.5	910.1	327.8	51	18
1994	109.7	2,249.0	1,906.4	996.4	418.8	52	22
1995	127.1	2,306.5	1,938.1	1,022.4	395.9	53	20
1996	149.5	2,410.1	2,018.3	1,056.7	358.4	52	18
1997	161.7	2,597.7	2,157.0	1,124.1	339.7	52	16
1998	157.0	2,740.3	2,261.6	1,178.9	339.4	52	15
1999	174.3	2,765.8	2,257.3	1,188.8	312.8	53	14
2000	176.3	2,870.9	2,334.9	1,243.2	322.5	53	14
2001	168.8	3,137.7	2,586.0	1,216.4	460.6	47	18

1 See notes and definitions from page 38

2 Until 30th June 1995 included agricultural vans and lorries and showman's goods vehicles licensed to draw trailers. From 1st July 1995 separate taxation groups for farmers and showmen were abolished.

3 Taxation class 35, Hackney. Public transportation vehicles including taxis: Abolished 30th June 1995

4 Taxation class 34, Buses. Public transportation vehicles with more than 8 seats. Introduced 1st July 1995.

5 Estimated: Retrospective estimates are based on vehicles registrations in tax class 35, with more than 8 seats

6 The agricultural and special machines taxation group was abolished on 30th June 1995 and replaced by the special concession taxation group from 1st July 1995.

7 The figure shown is aggregate number of vehicles registered in 1995 between 1st January and 30th June in agricultural and special machines group, and between 1st July and 31st December in special concession group.

8 Includes crown and exempt vehicles, three wheelers, and others.

Table 11 Motor vehicles registered for the first time:
by taxation group, vehicle details: 1991 - 2001

(a) Private and light goods: by engine size												Thousands
Over	Not over	1991	1992	1993	1994	1995	1996	1997	1998	1999	2000	2001
	1,000 cc	104.3	64.7	73.4	78.6	76.5	67.8	71.6	95.5	133.3	155.5	130.7
1,000 cc	1,200 cc	153.4	176.3	180.8	184.1	203.8	188.7	161.5	117.8	133.9	133.6	194.7
1,200 cc	1,500 cc	406.2	412.3	415.5	415.2	387.4	427.8	473.8	505.2	452.6	502.6	544.0
1,500 cc	1,800 cc	557.2	521.7	576.2	623.7	650.3	642.0	656.6	719.1	675.7	674.6	725.7
1,800 cc	2,000 cc	321.6	344.4	405.3	427.2	399.3	450.8	511.1	535.4	542.1	561.9	658.4
2,000 cc	2,500 cc	104.4	115.1	135.1	184.6	206.8	207.4	244.0	250.6	252.0	251.7	293.2
2,500 cc	3,000 cc	38.2	34.5	33.8	43.6	60.5	63.1	70.3	86.3	96.4	91.0	99.9
3,000 cc		23.2	25.3	33.3	34.5	39.4	45.5	55.3	57.9	55.9	58.9	63.0
cc not known		0.1	0.1	0.1	0.1	0.0	0.1	0.1	0.1	0.1	-	0.1
All vehicles		1,708.5	1,694.2	1,853.4	1,991.6	2,024.0	2,093.3	2,244.3	2,367.9	2,342.0	2,429.8	2,709.7

Of which: Private and light goods: Diesel propulsion												Thousands
Over	Not over	1991	1992	1994	1995	1996	1997	1998	1999	2000	2001	
	1,000 cc			0.6	0.8	0.6	0.7	-	0.5	0.9	1.2	
1,000 cc	1,200 cc			0.4	0.3	0.3	0.2	-	0.1	0.1	0.1	
1,200 cc	1,500 cc			29.4	9.4	3.9	3.4	-	1.0	2.1	10.6	
1,500 cc	1,800 cc			210.9	217.8	169.5	138.1	0.1	92.6	93.2	89.8	
1,800 cc	2,000 cc			174.9	157.4	177.0	200.2	0.2	224.1	245.7	372.9	
2,000 cc	2,500 cc			130.0	149.3	146.5	156.2	0.2	150.8	162.3	170.6	
2,500 cc	3,000 cc			15.7	20.7	24.6	30.0	-	45.1	39.6	46.8	
3,000 cc				6.0	5.5	4.8	5.0	-	4.7	9.1	14.1	
cc not known				-	-	-	-	-	-	-	0.1	
All vehicles				568.0	561.3	527.3	533.8	0.5	519.0	553.0	706.2	

(b) Motor cycles, scooters and mopeds: by engine size												Thousands
Over	Not over	1991	1992	1993	1994	1995	1996	1997	1998	1999	2000	2001
	50 cc	13.1	9.1	6.5	6.9	6.3	8.9	14.2	22.6	36.2	49.4	45.6
50 cc	150 cc	18.8	14.7	11.2	10.5	10.2	13.0	12.0	17.8	28.1	39.0	42.9
150 cc	200 cc	1.1	0.7	0.6	0.7	0.6	0.6	0.8	1.6	2.0	2.3	2.9
200 cc	250 cc	4.6	4.2	3.6	3.6	3.7	4.1	4.2	4.6	4.5	4.1	2.9
250 cc	350 cc	2.2	2.0	1.9	1.7	1.4	1.1	1.0	1.0	1.0	0.8	0.7
350 cc	500 cc	5.2	5.3	4.9	6.8	7.6	11.3	15.0	12.1	10.1	8.9	8.1
500 cc		31.5	29.5	29.9	34.3	38.7	50.4	74.1	83.7	86.5	78.3	74.0
All vehicles		76.5	65.6	58.4	64.6	68.9	89.6	121.3	143.3	168.4	182.9	177.1

(c) Public transport vehicles: by seating capacity												Thousands
Over	Not over	1991	1992	1993	1994	1995	1996	1997	1998	1999	2000	2001
	4 seats	0.1	0.1	0.1	0.5	0.0						
4 seats	8 seats	2.1	2.0	1.7	2.1	1.3						
8 seats or less		2.2	2.0	1.8	2.5	1.3						
8 seats	32 seats	1.6	1.4	1.7	1.9	2.1	3.1	3.1	3.6	4.3	4.1	4.1
32 seats	48 seats	0.3	0.6	0.8	1.2	1.4	1.4	1.9	2.0	1.8	1.5	1.0
48 seats		1.1	1.0	1.2	1.0	1.7	2.0	1.5	1.8	1.8	1.9	1.7
All over 8 seats		3.0	3.1	3.6	4.2	5.2	6.5	6.6	7.4	8.0	7.5	6.8
All capacities		5.2	5.1	5.4	6.7	6.5						

Table 11 (continued)

(d) Goods: by gross weight		Thousands										
Over	Not over	1991	1992	1993	1994	1995	1996	1997	1998	1999	2000	2001
	3.5 tonnes	0.6	0.5	0.5	0.5	0.3	0.0	0.0	0.0	0.0	0.0	0.0
3.5 tonnes	7.5 tonnes	10.8	10.4	10.4	12.6	14.1	14.1	14.0	17.0	15.2	16.3	16.3
7.5 tonnes	12 tonnes	1.1	1.2	1.3	1.0	1.2	1.3	1.0	1.1	1.1	1.2	1.1
12 tonnes	25 tonnes	8.0	7.6	8.7	10.5	12.6	12.3	10.6	12.5	9.1	9.4	8.8
25 tonnes	33 tonnes	3.1	3.2	3.9	5.9	5.9	4.7	4.0	5.1	8.4	8.3	8.1
33 tonnes	38 tonnes	5.0	5.9	8.1	10.5	13.5	12.6	11.5	12.5	6.4	5.5	4.4
38 tonnes	40 tonnes	0.0	0.0	0.0	0.0	0.0	0.0	0.0	0.0	0.4	0.7	1.1
40 tonnes		0.0	0.0	0.0	0.1	0.5	0.4	0.6	1.0	7.7	9.0	8.8
Gross weight unknown		0.0	0.0	0.0	0.0	0.0	0.0	0.0	0.0	0.0	0.0	0.0
All vehicles		28.6	28.7	32.8	41.1	48.0	45.5	41.8	49.1	48.3	50.4	48.6

(e) Special machines, agricultural tractors etc.		Thousands										
		1991	1992	1993	1994	1995	1996	1997	1998	1999	2000	2001
Agricultural tractors		14.6	13.9	17.7	18.3	19.0	18.7	14.8	9.8	11.5	10.6	12.4
Combine harvesters and other agricultural		2.4	2.5	2.5	2.5	3.3	3.7	4.0	2.8	3.8	4.2	5.3
Mowing machines		1.1	1.2	1.0	1.1	0.9	0.9	1.0	1.1	1.3	1.3	1.3
Electric						3.4	0.4	0.4	0.5	0.6	0.5	0.5
Gritting vehicle		0.4	0.1	0.1	0.1	0.1	0.2	0.2
Others		8.0	6.6	8.8	13.4	6.3	1.8	1.4	0.9	-	-	0.1
All vehicles		26.1	24.1	30.0	35.3	33.3	25.7	21.7	15.2	17.3	16.9	19.8

(f) Other licensed vehicles		Thousands										
		1991	1992	1993	1994	1995	1996	1997	1998	1999	2000	2001
Tricycles		0.3	1.2	1.0	0.9	0.6	0.7	1.2	1.0	0.9	0.7	0.6
General haulage		0.1	0.1	0.1	0.9	-	-	-	-	-	-	-
Recovery vehicles		0.4	0.3	0.3	0.3	0.3	0.3	0.3	0.4	0.5	0.5	0.4
All vehicles		0.7	1.6	1.4	1.3	1.0	1.0	1.5	1.4	1.5	1.2	1.2 ¹

(g) Crown and other vehicles exempt from licence duty		Thousands										
		1991	1992	1993	1994	1995	1996	1997	1998	1999	2000	2001
Crown vehicles		3.2	3.7	3.1	4.1	3.3	1.2	0.7	1.1	1.1	1.0	1.0
Personal and direct export vehicles		8.9	7.1	7.5	9.3	9.3	11.8	12.2	9.9	-	-	6.1
Other exempt vehicles		63.8	71.6	81.9	95.0	108.8	127.3	138.5	136.7	170.4	173.8	166.5
All exempt vehicles		75.8	82.3	92.4	108.4	121.4	140.3	151.4	147.7	171.6	174.8	167.5

(h) Special vehicles group: Tax classes 14 and 15		Thousands										
		1991	1992	1993	1994	1995	1996	1997	1998	1999	2000	2001
Special vehicles						3.3	8.1	8.6	7.7	7.6	7.1	7.0

¹ Includes Special Type vehicles and Special Type Vehicles Reduced Pollution.

Table 12 Motor vehicles registered for the first time: by county: 2001
with related stock and ownership information

Country/region/county	All vehicles			All Cars: 2001		Per 1,000 Population ¹	Average vehicle age (years) ²
	All vehicles licensed: 1991 (thousands)	New vehicle registrations: 2001 (thousands)	Currently licensed vehicles: 2001 (thousands)	New registrations (thousands)	Currently licensed (thousands)		
Great Britain	24,510.6	3,137.7	29,747.1	2,586.0	25,125.9	433	6.7
Vehicle Under Disposal	n/a	n/a	442.7	n/a	380.5	n/a	7.5
County Unknown	8.3	9.4	77.0	7.7	50.6	n/a	10.4
England	21,456.8	2,774.4	25,531.9	2,277.3	21,539.3	431	6.7
North Eastern Region	875.3	111.7	1,034.7	93.8	893.0	346	6.0
Cleveland	209.1	19.7	225.9	15.7	196.2	352	6.4
Durham	212.9	24.0	263.0	19.7	224.5	370	6.1
Northumberland	110.1	13.9	151.1	12.1	128.2	413	5.9
Tyne And Wear Metropolitan Area	343.2	54.2	394.7	46.4	344.1	312	5.9
Yorkshire And Humberside Region	1,992.3	225.8	2,285.7	184.2	1,930.8	382	6.3
Humberside	345.4	34.3	412.9	26.4	339.9	386	6.7
North Yorkshire	335.5	41.4	418.3	33.7	340.2	451	6.3
South Yorkshire Metropolitan Area	507.9	50.8	543.6	41.6	467.8	359	6.6
West Yorkshire Metropolitan Area	803.5	99.4	910.9	82.5	782.9	369	6.0
East Midland Region	1,748.6	265.4	2,273.8	213.1	1,863.0	443	6.8
Derbyshire	349.9	69.8	561.8	46.9	431.1	441	6.7
Leicestershire	387.2	85.8	486.5	77.8	413.6	441	6.8
Lincolnshire	299.5	27.0	375.4	20.8	300.8	474	7.1
Northamptonshire	266.6	37.3	374.0	30.4	314.3	502	6.3
Nottinghamshire	445.5	45.5	476.1	37.2	403.2	391	6.9
East Of England Region	2,652.5	329.0	3,154.1	271.0	2,639.5	483	6.9
Bedfordshire	260.1	25.1	291.8	19.9	247.2	437	6.9
Cambridgeshire	367.9	43.9	411.7	34.2	340.2	466	6.9
Essex	729.4	88.6	910.5	74.8	769.5	472	7.1
Hertfordshire	566.4	105.1	661.9	90.7	568.9	541	6.0
Norfolk	400.6	36.3	476.6	28.6	387.2	482	7.4
Suffolk	328.0	29.9	401.6	22.8	326.4	480	7.7

1. Using 2000 mid-year population estimates.

2. Nominal: Vehicles registered at any time in 2001 are counted as age 0.5 year at the end of 2001
vehicles registered in 2000 are counted as age 1.5 at the end of 2000, etc, etc.

Table 12 continued

Country/region/county	All vehicles			All Cars: 2001			Average vehicle age (years) ²
	All vehicles licensed: 1991 (thousands)	New vehicle 2001 (thousands)	Currently licensed vehicles: 2001 (thousands)	New registrations (thousands)	Currently licensed (thousands)	Per 1,000 Population ¹	
South Eastern Region	3,777.7	513.0	4,691.6	427.1	4,006.4	494	6.8
Berkshire	431.2	107.2	551.5	92.5	473.1	589	5.6
Buckinghamshire	317.9	70.9	473.4	57.7	400.5	578	5.8
East Sussex	315.6	26.2	367.3	21.3	314.1	414	7.6
Hampshire	768.4	90.3	941.5	74.1	801.4	484	7.0
Isle Of Wight UA	59.5	4.9	72.2	3.9	58.5	452	8.8
Kent	720.8	70.1	840.2	56.9	714.4	447	7.2
Oxfordshire	283.8	36.3	342.0	30.4	288.1	456	6.9
Surrey	534.1	66.6	650.4	56.5	567.1	525	6.8
West Sussex	346.2	40.6	453.1	33.9	389.1	509	7.1
London Region	2,781.0	308.9	2,845.7	258.1	2,461.4	334	7.2
South Western Region	2,405.3	249.2	2,947.6	197.2	2,446.9	492	7.4
Avon	477.3	45.1	537.3	34.3	453.0	446	7.2
Cornwall And Isles Of Scilly	234.5	16.1	288.2	12.6	232.5	466	8.3
Devon	495.0	44.0	592.4	35.1	486.7	448	7.9
Dorset	336.2	28.2	405.1	21.8	340.6	488	7.9
Gloucestershire	282.1	22.8	328.6	18.7	276.5	490	7.5
Somerset	242.6	17.4	304.3	12.7	244.4	492	8.0
Wiltshire	337.6	75.6	491.7	62.0	413.3	674	5.6
West Midland Region	2,457.2	391.5	2,973.6	324.8	2,478.5	465	6.3
Hereford And Worcester	345.6	40.7	430.3	33.6	357.0	502	7.1
Shropshire	215.5	18.5	253.7	12.9	204.9	470	7.2
Staffordshire	438.4	70.2	554.2	59.4	465.8	440	6.6
Warwickshire	228.7	32.2	315.9	26.2	263.6	517	6.3
West Midlands Metropolitan Area	1,229.1	229.9	1,419.4	192.6	1,187.1	453	5.7
North Western Region	2,775.3	379.9	3,325.1	307.9	2,819.8	409	6.2
Cheshire	438.4	61.7	540.7	51.9	467.6	475	6.3
Cumbria	234.5	25.9	276.1	21.6	224.6	457	6.7
Greater Manchester Metropolitan Area	999.1	181.7	1,302.9	143.0	1,089.6	421	5.7
Lancashire	642.2	57.7	675.2	47.7	572.9	401	6.8
Merseyside Metropolitan Area	461.1	52.8	530.1	43.8	465.1	331	6.5
Wales	1,208.6	112.7	1,433.3	95.5	1,217.0	413	7.0
Scotland	1,845.2	241.2	2,262.2	205.5	1,938.5	379	5.8

Table 13 Monthly vehicle registrations: 1998-2001

Thousands

Year	Month	of which:					Goods	All vehicles
		Cars	Company cars	Motor cycles	Public Transport ¹			
1998	January	227.0	119.0	7.2	0.4	3.5	260.2	
	February	179.3	94.9	9.8	0.5	3.4	214.1	
	March	213.7	118.0	14.1	0.7	4.7	263.9	
	April	170.2	97.3	13.8	0.8	4.0	210.5	
	May	172.2	97.0	15.1	0.8	4.0	215.6	
	June	170.3	92.4	14.1	0.8	4.0	212.7	
	July	39.9	19.7	7.2	0.3	2.1	58.8	
	August	506.3	230.9	24.1	0.9	6.1	581.2	
	September	166.5	83.3	13.0	0.7	4.5	208.4	
	October	158.2	84.6	10.7	0.6	4.7	195.5	
	November	156.4	85.6	7.8	0.5	4.6	190.6	
	December	101.6	56.1	6.8	0.4	3.5	128.8	
	All 1998		2261.6	1178.9	143.7	7.4	49.1	2740.3
1999	January	185.0	106.8	7.8	0.6	3.4	216.7	
	February	83.1	46.8	5.2	0.4	3.0	103.9	
	March	376.8	186.7	24.8	1.1	5.3	447.1	
	April	183.3	98.6	16.9	0.7	3.9	228.7	
	May	179.2	95.3	17.0	0.8	4.0	223.7	
	June	199.9	104.9	17.2	0.7	4.1	247.4	
	July	172.8	84.3	18.2	0.7	3.6	218.3	
	August	78.4	38.3	11.9	0.5	3.1	107.8	
	September	398.0	204.2	21.0	0.8	5.2	465.2	
	October	154.8	84.4	12.4	0.5	4.5	194.6	
	November	153.2	87.9	9.5	0.6	4.7	192.8	
	December	92.8	50.5	6.6	0.7	3.5	119.8	
	All 1999		2257.3	1188.8	168.4	8.0	48.3	2765.8
2000	January	190.3	119.8	7.1	0.6	3.6	221.9	
	February	79.3	45.3	6.3	0.4	3.1	102.9	
	March	412.6	225.5	24.0	1.0	5.6	485.5	
	April	176.2	94.3	17.0	0.8	4.0	220.5	
	May	201.0	112.9	17.8	0.8	3.9	248.4	
	June	203.8	115.4	18.6	0.8	4.6	254.7	
	July	164.2	88.0	18.8	0.5	4.1	212.0	
	August	79.3	39.5	14.4	0.3	3.2	112.9	
	September	369.0	170.0	23.8	0.7	6.7	438.7	
	October	165.4	80.9	14.4	0.5	4.6	208.6	
	November	176.3	90.2	11.3	0.4	4.0	218.1	
	December	117.6	61.5	9.2	0.5	3.1	146.7	
	All 2000		2334.9	1243.2	182.9	7.5	50.4	2870.9
2001	January	197.9	103.7	9.6	0.4	3.1	233.0	
	February	83.8	43.3	8.1	0.4	3.1	110.5	
	March	426.2	193.1	21.5	0.8	5.0	495.6	
	April	185.8	87.4	16.7	0.5	4.2	232.2	
	May	206.6	101.8	17.6	0.6	4.0	254.5	
	June	226.2	111.6	19.8	0.8	4.2	279.3	
	July	183.7	88.2	18.0	0.5	4.0	230.1	
	August	83.4	39.2	13.5	0.4	3.2	117.3	
	September	462.5	199.9	20.7	0.9	7.3	536.8	
	October	195.8	91.3	12.8	0.5	3.5	238.6	
	November	197.3	90.3	10.9	0.6	3.9	240.4	
	December	136.9	66.7	7.9	0.5	3.1	169.5	
	All 2001		2586.0	1216.4	177.1	6.8	48.6	3137.7

¹ Buses and Coaches with eight seats and above.

Table 14 Motor Vehicles registered for the first time: Historic series: 1952-1990

For detail on years 1991 - 2001 see table 10

Thousands

Year	Private and light goods ¹	Goods vehicles	Motor cycles scooters and mopeds ²	Public transport vehicles ³	Special machines etc ⁴	Other vehicles ^{5,6}	All vehicles
1952	187.6		132.5	5.4	35.3	16.0	376.8
1953	295.1	97.2	138.6	5.0	33.5	14.1	583.5
1954	386.4	109.6	164.6	5.5	35.2	17.1	718.4
1955	500.9	153.5	185.2	5.6	39.2	22.1	906.5
1956	399.7	148.0	142.8	5.1	31.9	23.3	750.8
1957	425.4	140.5	206.1	5.0	39.8	19.9	836.7
1958	555.3	172.6	182.7	4.9	47.2	18.9	981.6
1959	645.6	191.7	331.8	5.1	49.0	29.7	1,252.9
1960	805.0	225.9	256.7	6.4	42.5	32.9	1,369.4
1961	742.8	220.2	212.4	6.1	46.4	31.4	1,259.3
1962	784.7	192.3	140.2	5.5	42.8	26.7	1,192.2
1963	1,008.6	206.4	165.5	6.4	47.9	31.2	1,466.0
1964	1,190.6	229.3	205.1	6.5	46.1	33.6	1,711.2
1965	1,122.5	229.4	150.9	6.8	45.4	45.7	1,600.7
1966	1,065.4	227.2	109.4	6.8	48.4	36.4	1,493.6
1967	1,116.7	221.5	137.7	6.5	53.9	38.9	1,575.2
1968	1,116.9	231.7	112.0	7.1	57.0	37.2	1,561.9
1969	987.4	239.6	85.4	7.1	49.3	33.0	1,401.8
1969	1,133.2	93.8	85.4	7.1	49.3	33.0	1,401.8
1970	1,248.1	85.2	104.9	7.7	48.8	30.2	1,524.9
1971	1,462.1	74.2	127.9	9.5	37.9	30.0	1,741.6
1972	1,854.8	74.9	152.5	9.8	47.6	44.1	2,183.7
1973	1,851.3	82.7	193.6	10.0	49.7	43.0	2,230.3
1974	1,399.6	68.0	189.8	7.8	45.6	39.6	1,750.4
1975	1,317.2	67.0	264.8	7.8	48.5	44.6	1,749.9
1976	1,401.8	63.9	270.6	8.7	51.8	41.2	1,838.0
1977	1,445.0	68.8	251.3	8.8	48.3	39.8	1,862.0
1978	1,745.8	79.8	225.3	9.1	50.0	41.4	2,151.4
1979	1,891.5	91.3	285.9	9.1	47.7	44.4	2,369.9
1980	1,679.2	74.7	312.7	8.8	36.7	43.5	2,155.6
1980	1,699.2	54.9	312.7	8.8	36.7	43.5	2,155.8
1981	1,643.6	39.9	271.9	7.5	32.6	34.8	2,030.3
1982	1,745.5	41.2	231.6	7.1	41.2	39.6	2,103.9
1983	1,989.1	46.6	174.5	7.3	42.1	47.9	2,307.5
1984	1,932.6	49.6	145.2	7.2	40.1	64.2	2,238.9
1985	2,029.5	51.7	125.8	6.8	40.1	55.4	2,309.3
1986	2,070.7	51.4	106.4	8.9	34.8	61.5	2,333.7
1987	2,212.6	54.0	90.8	8.7	37.7	70.1	2,473.9
1988	2,437.0	63.4	90.1	9.2	45.2	78.6	2,723.5
1989	2,535.2	64.5	97.3	8.0	42.5	81.4	2,828.9
1990	2,179.9	44.4	94.4	7.4	34.2	78.4	2,438.7

1 From 1969 onwards registrations for the new October 1982 taxation classes have been estimated. Figures for 1951-1969 refer to previous classes. From 1980 onwards figures refer to the October 1990 taxation classes.

2 Includes scooters and mopeds.

3 Includes taxis but excludes tram cars.

4 Includes trench diggers, mobile cranes, etc but excludes agricultural on exempt vehicles.

5 Includes crown and exempt vehicles, three wheelers, pedestrian controlled vehicles and showmans' goods vehicles.

6 Excludes vehicles officially registered by the armed forces.

Table 15 Goods vehicle stock at end of year: 1991 - 2001

Thousands

Year	Rigid vehicles	Articulated vehicles				All vehicles
		Not over 28 tonnes	28-37 tonnes	over 37 tonnes	All	
1991	330	13	26	61	100	430
1992	316	13	23	63	99	415
1993	313	12	21	64	98	410
1994	312	13	20	71	103	416
1995	311	13	18	76	107	418
1996	311	13	17	79	110	421
1997	310	13	16	83	112	422
1998	310	13	15	84	111	421
1999	311	14	15	83	112	423
2000	311	14	14	86	114	425
2001	314	13	13	89	115	430

Trailers - analysis by axle type¹

Thousands

National totals	1 axle	2 axle	3 axle	4 axle	5 axle	Total
First / Annual tests in 1993	12.0	128.5	83.7	0.1	-	224.3
First / Annual tests in 1994	11.1	122.3	92.1	0.1	-	225.6
First / Annual tests in 1995	10.2	115.1	101.2	0.1	-	226.7
First / Annual tests in 1996	9.4	111.3	111.9	0.1	-	232.8
First / Annual tests in 1997	8.6	104.9	121.7	0.1	-	235.3
First / Annual tests in 1998	8.1	98.1	131.8	0.1	-	238.0
First / Annual tests in 1999	7.5	89.8	143.2	0.1	-	240.6
First / Annual tests in 2000	7.1	82.2	151.3	0.1	-	241.0

¹ This table is derived from Vehicle Inspectorate data on the number of trailers tested.

Table 16 Goods vehicle stock: by gross weight and axle configuration: 2001

Thousands

Tractor	Trailer	Over Not over	3.5 t 7.5 t	7.5 t 12 t	12 t 16 t	16 t 20 t	20 t 24 t	24 t 28 t	28 t 32 t	32 t 33 t	33 t 37 t	37 t 38 t	38 t	All weights
Rigid vehicles														
2 Axle			157.0	13.3	19.5	64.9	0.1	0.1	-	-	-	-	-	255.0
3 Axle			0.2	0.1	0.1	0.7	8.1	28.4	-	-	-	-	0.1	37.7
4 Axle			-	-	0.1	0.1	-	0.3	20.9	-	-	-	0.1	21.6
All rigid			157.2	13.3	19.7	65.7	8.2	28.8	20.9	-	-	0.1	0.2	314.3
Articulated vehicles														
2 Axle	2 Axle		-	-	-	0.1	0.4	4.6	0.8	0.5	0.1	0.2	0.2	6.9
	3 Axle		-	0.0	-	-	0.1	1.1	0.7	0.6	1.9	17.7	9.2	31.3
	Any		0.1	-	-	0.5	1.4	4.2	2.5	4.5	0.2	1.3	1.5	16.2
All 2 Axle			0.1	-	-	0.6	1.9	9.9	4.0	5.5	2.3	19.2	11.0	54.4
3 Axle	2 Axle		-	-	0.0	0.0	-	0.1	0.1	0.4	0.2	1.7	1.2	3.8
	3 Axle		-	0.0	0.0	-	-	0.1	0.1	0.2	0.2	12.0	34.6	47.3
	Any		-	-	-	-	-	0.2	0.1	0.1	0.1	3.5	5.9	10.0
All 3 Axle			-	-	-	-	0.1	0.4	0.3	0.7	0.4	17.3	41.8	61.1
2 & 3 Axle	2 Axle		-	-	-	0.1	0.4	4.7	0.9	0.9	0.3	2.0	1.5	10.7
	3 Axle		-	0.0	-	-	0.1	1.1	0.8	0.8	2.1	29.7	43.9	78.6
	Any		0.1	-	-	0.5	1.4	4.4	2.6	4.6	0.3	4.8	7.5	26.2
All articulated			0.1	-	-	0.6	1.9	10.3	4.3	6.2	2.7	36.5	52.8	115.5

Table 17 Goods vehicle stock: by taxation¹ group and axle configuration: 2001

Thousands

Taxation class(es)	Rigid vehicles				Articulated vehicles									All	All	All
	2 axle	3 axle	4 axle	All	2 axle tractor				3 axle tractor							
					2 axle trailer	3 axle trailer	any trailer	All	2 axle trailer	3 axle trailer	any trailer	All				
General goods																
HGV	243.7	33.7	21.3	298.7	6.9	31.3	16.0	54.1	3.8	47.3	9.9	61.0	115.1	413.8		
Trailer HGV	4.2	3.7	0.1	8.0	0.0	-	-	-	0.0	-	-	-	-	8.0		
Small Island	0.2	-	-	0.2	0.0	0.0	-	-	0.0	0.0	-	-	-	0.2		
Others																
Electric classes	2.4	-	-	2.4	0.0	0.0	-	-	0.0	0.0	0.0	0.0	-	2.4		
Crown vehicles	0.3	-	-	0.3	0.0	0.0	-	-	0.0	0.0	-	-	-	0.3		
Exempt not crown	4.2	0.3	0.2	4.7	-	-	0.2	0.2	-	-	-	-	0.3	4.9		
Total	255.0	37.7	21.6	314.3	6.9	31.3	16.2	54.4	3.8	47.3	10.0	61.1	115.5	429.7		

1 Only vehicles in these taxation groups greater than 3500kg gross vehicle weight, and with goods vehicle body type.

Table 18 Rigid vehicle stock: by gross weight and body type: 2001

Thousands

Body type	Not over	3.5 t	7.5 t	12 t	16 t	20 t	24 t	28 t	32 t	All
		7.5 t	12 t	16 t	20 t	24 t	28 t	32 t	—	weights
Box Van		70.7	5.7	7.6	25.8	1.8	2.9	0.1	-	114.7
Tipper		21.0	0.9	1.4	6.0	0.2	6.5	13.3	-	49.4
Flat Lorry		8.8	1.2	1.4	5.3	1.0	2.6	0.9	-	21.3
Dropside Lorry		12.3	0.9	1.2	4.9	0.3	1.0	0.1	-	20.7
Goods		8.0	0.9	1.6	4.2	0.7	1.9	1.3	0.2	18.9
Insulated Van		6.8	1.0	1.4	3.5	0.3	0.8	-	-	13.8
Refuse Disposal		0.5	0.2	0.2	1.7	1.8	4.7	1.6	-	10.6
Skip Loader		1.0	0.2	0.2	5.1	0.2	0.7	1.3	-	8.7
Panel Van		6.6	0.1	0.1	0.2	-	-	-	0.0	7.0
Tanker		0.4	0.2	0.3	2.4	0.2	2.6	0.8	-	6.8
Concrete Mixer		-	-	0.2	0.3	-	2.8	0.3	-	3.8
Van		2.9	0.1	0.1	0.3	-	-	-	-	3.5
Livestock Carrier		2.5	0.2	0.1	0.2	0.1	0.1	-	-	3.2
Street Cleansing		1.0	0.1	1.5	0.2	-	-	-	0.0	2.9
Car Transporter		0.8	0.2	0.1	0.9	0.7	-	-	-	2.7
Luton Van		2.1	0.2	0.3	0.2	-	-	-	0.0	2.7
Float		2.3	-	-	-	0.0	0.0	0.0	0.0	2.3
Tractor		0.5	-	0.1	0.5	0.2	0.6	0.1	0.1	2.1
Truck		1.0	0.1	0.1	0.2	-	0.1	-	-	1.6
Specially Fitted Van		0.5	0.1	0.1	0.1	-	-	-	-	0.9
Pantechnicon		0.3	-	0.2	0.4	-	-	-	0.0	0.9
Tower Wagon		0.7	0.1	-	-	0.0	-	-	0.0	0.9
Skeletal Vehicle		0.3	0.1	0.1	0.2	-	0.1	0.1	-	0.8
Curtain Sided		0.2	-	-	0.2	-	-	-	-	0.5
Glass Carrier		0.2	-	-	0.2	-	-	-	0.0	0.5
Mobile Plant		0.2	-	-	0.1	-	0.1	-	0.0	0.4
Special Mobile Unit		0.2	-	-	-	-	-	-	0.0	0.4
Airport Support Unit		0.1	-	-	0.2	0.0	-	-	0.0	0.3
Others		1.0	0.2	0.3	0.5	0.1	0.2	0.2	-	2.6
Not known		4.3	0.5	0.9	2.1	0.3	0.8	0.6	-	9.3
Total		157.2	13.3	19.7	65.7	8.2	28.8	20.9	0.4	314.3

Table 19 Goods vehicle stock: by GVW¹ and year of 1st registration: 2001

Thousands

Year of first registration	Over Not over	3.5 t 7.5 t	7.5 t 12 t	12 t 16 t	16 t 20 t	20 t 24 t	24 t 28 t	28 t 32 t	32 t 33 t	33 t 37 t	37 t 38 t	38 t ---	All weights
Rigid vehicles													
Pre-1991		36.8	3.4	4.7	11.9	1.2	4.5	3.3		-		-	65.6
1991		5.1	0.5	0.8	2.1	0.2	0.7	0.4		0.0		-	9.8
1992		5.9	0.6	0.8	2.4	0.3	0.7	0.4		-		-	11.2
1993		6.4	0.9	1.0	3.4	0.3	1.1	0.7		-		0.0	13.8
1994		8.7	0.7	1.2	4.5	0.5	1.8	1.8		-		-	19.3
1995		10.5	0.9	1.4	5.6	0.8	2.5	1.9		-		-	23.5
1996		10.8	1.0	1.6	5.6	0.8	2.6	1.5		-		-	23.9
1997		11.7	1.0	1.7	5.0	0.8	2.4	1.5		-		-	24.1
1998		14.7	1.0	1.6	6.1	0.9	2.8	2.0		-		-	29.1
1999		14.0	1.1	1.7	6.0	0.8	3.1	2.3		-		-	29.0
2000		16.0	1.2	1.6	6.5	0.9	3.3	2.4		-		-	31.9
2001		16.6	1.1	1.6	6.6	0.8	3.4	2.8		0.1		0.1	33.0
All years		157.2	13.3	19.7	65.7	8.2	28.8	20.9		0.2		0.2	314.3
Articulated vehicles													
Pre-1991			0.1		0.2	0.2	0.9	0.2	0.6	0.1	3.3	1.3	6.8
1991			-		-	-	0.2	0.1	0.1	-	0.8	0.4	1.6
1992			-		-	0.1	0.3	0.1	0.1	-	1.1	0.6	2.3
1993			-		-	0.1	0.6	0.1	0.2	0.1	1.8	1.3	4.2
1994			-		-	0.1	0.9	0.2	0.3	0.2	2.5	2.3	6.5
1995			-		0.1	0.2	1.1	0.4	0.5	0.2	3.6	3.6	9.5
1996			-		-	0.1	1.0	0.4	0.6	0.2	3.3	3.9	9.6
1997			-		-	0.2	1.0	0.4	0.5	0.3	3.5	4.5	10.5
1998			-		0.1	0.4	1.2	0.5	0.8	0.3	4.9	5.3	13.5
1999			-		-	0.2	1.2	0.6	0.8	0.5	3.8	9.2	16.3
2000			-		-	0.2	1.0	0.6	0.9	0.4	4.0	10.2	17.3
2001			-		-	0.1	0.9	0.8	0.6	0.4	3.9	10.4	17.3
All years			0.2		0.6	1.9	10.3	4.3	6.2	2.7	36.5	52.8	115.5
Rigid and articulated vehicles													
Pre-1991		36.9	3.4	4.7	12.0	1.3	5.4	3.5	0.6	0.1	3.3	1.3	72.4
1991		5.1	0.5	0.8	2.2	0.2	0.9	0.5	0.1	-	0.8	0.4	11.4
1992		5.9	0.6	0.8	2.5	0.3	1.1	0.5	0.1	-	1.1	0.6	13.5
1993		6.4	0.9	1.0	3.4	0.4	1.7	0.9	0.2	0.1	1.8	1.3	18.0
1994		8.7	0.7	1.2	4.6	0.7	2.7	2.0	0.3	0.2	2.5	2.3	25.8
1995		10.5	0.9	1.4	5.7	0.9	3.6	2.3	0.5	0.2	3.6	3.6	33.1
1996		10.8	1.0	1.6	5.7	0.9	3.6	1.8	0.6	0.2	3.3	3.9	33.5
1997		11.7	1.0	1.7	5.0	1.0	3.4	1.9	0.5	0.3	3.5	4.5	34.5
1998		14.7	1.0	1.6	6.2	1.3	4.0	2.4	0.8	0.3	4.9	5.4	42.6
1999		14.0	1.1	1.7	6.0	1.0	4.3	2.9	0.8	0.5	3.9	9.2	45.3
2000		16.0	1.2	1.6	6.5	1.1	4.2	2.9	0.9	0.4	4.0	10.3	49.2
2001		16.6	1.1	1.6	6.6	0.9	4.3	3.6	0.6	0.5	4.0	10.5	50.3
All years		157.4	13.4	19.7	66.3	10.1	39.0	25.2	6.2	2.8	36.6	53.0	429.7

1 GVW: Gross vehicle weight.

Table 20 Rigid goods vehicle stock: by year of 1st registration and body type: 2001

Body type	Thousands											
	1991 & before	1992	1993	1994	1995	1996	1997	1998	1999	2000	2001	All years
Rigid vehicles												
Box Van	18.0	3.9	5.1	6.6	8.5	9.0	9.7	13.1	12.5	14.1	14.2	114.7
Tipper	13.8	1.5	2.2	3.9	4.1	3.3	3.3	3.6	4.0	4.7	5.1	49.4
Flat Lorry	9.0	0.9	1.0	1.2	1.5	1.4	1.2	1.3	1.2	1.4	1.2	21.3
Dropside Lorry	5.6	0.7	0.9	1.3	1.5	1.5	1.6	1.8	1.9	1.8	2.1	20.7
Goods	6.7	1.0	0.8	1.1	1.1	1.2	1.5	1.3	1.2	1.6	1.4	18.9
Insulated Van	1.5	0.6	0.7	0.7	1.0	1.3	1.2	1.5	1.9	1.9	1.5	13.8
Refuse Disposal	1.0	0.3	0.5	0.6	0.9	1.1	1.0	1.2	1.2	1.3	1.4	10.6
Skip Loader	2.3	0.2	0.3	0.6	0.7	0.6	0.5	0.7	0.8	0.9	1.0	8.7
Panel Van	1.1	0.2	0.2	0.4	0.5	0.6	0.7	0.8	0.8	0.7	1.0	7.0
Tanker	1.8	0.3	0.3	0.4	0.6	0.5	0.4	0.6	0.7	0.5	0.6	6.8
Concrete Mixer	0.6	0.1	0.1	0.2	0.4	0.4	0.4	0.4	0.4	0.4	0.4	3.8
Van	1.2	0.1	0.1	0.1	0.1	0.3	0.3	0.4	0.3	0.2	0.3	3.5
Livestock Carrier	2.3	0.1	0.1	0.1	0.1	0.1	0.1	0.1	0.1	0.1	0.1	3.2
Street Cleansing	0.4	0.1	0.1	0.2	0.2	0.1	0.2	0.3	0.3	0.5	0.5	2.9
Car Transporter	0.4	0.1	0.1	0.1	0.2	0.2	0.2	0.3	0.3	0.4	0.4	2.7
Luton Van	1.4	0.1	0.1	0.1	0.1	0.1	0.1	0.1	0.1	0.2	0.2	2.7
Float	2.3	0.0	0.0	0.0	-	-	-	-	-	0.0	-	2.3
Tractor	0.2	0.1	0.1	0.2	0.2	0.5	0.2	0.3	0.3	0.1	0.0	2.1
Truck	0.6	0.1	0.0	0.1	0.1	0.1	0.1	0.2	0.2	0.1	0.1	1.6
Specially Fitted Van	0.4	0.0	0.0	0.1	0.0	0.0	0.0	0.0	0.1	0.1	0.1	0.9
Pantehnicon	0.3	0.0	0.1	0.1	0.0	0.0	0.1	0.1	0.1	0.1	0.1	0.9
Tower Wagon	0.2	0.0	0.0	0.1	0.1	0.1	0.1	0.1	0.1	0.1	0.1	0.9
Skeletal Vehicle	0.1	0.0	0.1	0.1	0.1	0.1	0.1	0.1	0.0	0.1	0.1	0.8
Curtain Sided	-	0.0	0.0	-	-	-	0.0	-	0.0	0.0	0.5	0.5
Glass Carrier	0.1	0.0	0.0	0.0	0.0	0.0	0.0	0.0	0.0	0.1	0.1	0.5
Mobile Plant	0.2	0.0	0.0	0.0	0.0	0.0	0.0	0.0	0.0	0.0	0.0	0.4
Special Mobile Unit	0.2	0.0	0.0	0.0	0.0	0.0	0.0	0.0	0.0	0.0	0.0	0.4
Airport Support Unit	0.1	0.0	0.0	0.0	0.0	0.0	0.0	0.0	0.0	0.0	0.0	0.3
Others	1.0	0.1	0.1	0.1	0.1	0.1	0.1	0.2	0.2	0.2	0.3	2.6
Not known	2.8	0.5	0.7	0.9	1.0	1.0	0.8	0.5	0.6	0.4	0.1	9.3
Total	75.4	11.2	13.8	19.3	23.5	23.9	24.1	29.1	29.0	31.9	33.0	314.3

Table 21 Goods vehicle by axle configuration: County, region and UA¹: 2001

Thousands

Country/region/local authority	Articulated Vehicles								All
	2-axle tractor				3-axle tractor				
	2-axle trailer	3-axle trailer	any trailer	All	2-axle trailer	3-axle trailer	any trailer	All	
Great Britain	6.9	31.3	16.2	54.4	3.8	47.3	10.0	61.1	115.5
Vehicle Under Disposal	0.1	0.5	0.2	0.7	-	0.4	0.1	0.5	1.2
County Uncoded	-	0.2	0.1	0.2	-	0.3	0.1	0.4	0.6
England	6.2	27.2	14.6	48.0	3.4	41.1	8.6	53.2	101.1
North Eastern Region	0.2	1.2	0.4	1.8	0.2	2.1	0.3	2.6	4.3
Darlington UA	-	0.1	-	0.1	-	0.1	-	0.1	0.2
Durham	-	0.4	0.1	0.6	-	0.5	0.1	0.6	1.2
Hartlepool UA	-	-	-	-	-	-	-	-	0.1
Middlesbrough UA	-	-	-	-	-	0.1	-	0.1	0.1
Northumberland	-	0.1	-	0.2	-	0.3	-	0.4	0.6
Redcar And Cleveland UA	-	-	-	-	-	0.2	-	0.2	0.2
Stockton-On-Tees UA	-	0.2	-	0.2	-	0.3	-	0.3	0.5
Tyne And Wear Metropolitan Area	-	0.3	0.2	0.5	0.1	0.6	0.1	0.8	1.3
Yorkshire And Humberside Region	0.8	3.5	1.2	5.5	0.4	5.8	1.3	7.5	13.0
East Riding Of Yorkshire UA	-	0.3	0.1	0.4	-	0.6	0.1	0.7	1.1
Kingston Upon Hull UA	-	0.2	0.1	0.3	-	0.6	0.1	0.7	1.0
North East Lincolnshire UA	-	0.1	-	0.1	-	0.4	0.1	0.5	0.5
North Lincolnshire UA	-	0.2	-	0.3	-	0.4	0.1	0.5	0.8
North Yorkshire	0.1	0.6	0.2	1.0	0.1	1.1	0.1	1.3	2.2
South Yorkshire Metropolitan Area	0.3	0.5	0.2	1.0	0.1	0.7	0.3	1.0	2.0
West Yorkshire Metropolitan Area	0.3	1.7	0.6	2.5	0.2	1.9	0.6	2.7	5.2
York UA	-	-	-	-	-	-	-	0.1	0.1
East Midland Region	0.8	3.4	2.3	6.4	0.4	4.5	1.1	6.0	12.4
Derby UA	-	-	-	-	-	-	-	-	0.1
Derbyshire	0.1	0.6	1.0	1.6	0.1	0.6	0.4	1.0	2.7
Leicester City UA	0.2	-	-	0.2	-	0.1	-	0.1	0.3
Leicestershire	0.1	0.3	0.2	0.6	-	0.6	0.1	0.7	1.3
Lincolnshire	0.1	0.5	0.2	0.7	0.1	1.4	0.2	1.7	2.4
Northamptonshire	0.2	1.5	0.6	2.4	0.2	0.9	0.2	1.3	3.7
Nottingham UA	-	0.1	0.1	0.2	-	0.3	0.1	0.4	0.5
Nottinghamshire	0.1	0.3	0.2	0.6	0.1	0.5	0.1	0.7	1.3
Rutland UA	-	-	-	-	-	0.1	-	0.1	0.2
East Of England Region	0.8	3.8	1.3	5.8	0.6	7.6	1.5	9.8	15.6
Bedfordshire	0.1	0.3	0.1	0.5	0.1	0.6	0.1	0.7	1.3
Cambridgeshire	0.1	0.6	0.1	0.8	0.1	1.2	0.2	1.5	2.3
Essex	0.2	0.5	0.1	0.8	0.1	0.7	0.2	1.0	1.8
Hertfordshire	0.1	0.5	0.3	0.9	0.2	0.5	0.1	0.7	1.7
Luton UA	-	-	-	-	-	0.1	-	0.1	0.2
Norfolk	0.1	0.6	0.2	0.9	0.1	1.1	0.2	1.4	2.2
Peterborough UA	-	0.1	-	0.1	-	0.1	-	0.1	0.2
Southend-On-Sea UA	-	-	-	0.1	-	-	-	-	0.1
Suffolk	0.1	0.8	0.2	1.1	0.1	2.8	0.6	3.5	4.6
Thurrock UA	0.2	0.3	0.1	0.5	0.1	0.6	0.1	0.7	1.2
South Eastern Region	0.7	3.4	1.6	5.7	0.3	5.0	0.8	6.1	11.8
Bracknell Forest UA	-	-	0.2	0.3	-	-	-	-	0.3
Brighton And Hove UA	-	-	0.1	0.1	-	-	-	-	0.1
Buckinghamshire	-	0.1	0.1	0.2	-	0.2	-	0.2	0.4
East Sussex	-	0.1	0.1	0.2	-	0.1	-	0.2	0.3
Hampshire	0.1	0.4	0.2	0.7	-	0.4	0.1	0.6	1.3
Isle Of Wight UA	-	-	-	-	-	-	-	0.1	0.1
Kent	0.1	0.8	0.2	1.1	0.1	1.0	0.1	1.1	2.3
Medway UA	-	0.1	-	0.1	-	0.2	-	0.3	0.4
Milton Keynes UA	0.1	0.9	0.3	1.4	0.1	2.0	0.3	2.4	3.8
Oxfordshire	0.1	0.4	0.1	0.6	-	0.2	-	0.3	0.8
Portsmouth UA	-	-	-	-	-	-	-	0.1	0.1
Reading UA	-	-	-	-	-	0.1	-	0.1	0.1
Slough UA	-	0.1	-	0.2	-	0.2	-	0.2	0.4
Southampton UA	-	-	-	0.1	-	0.1	-	0.1	0.2
Surrey	-	0.3	0.1	0.4	-	0.2	-	0.2	0.6
West Berkshire UA	-	-	0.1	0.1	-	0.1	-	0.1	0.2
West Sussex	-	0.1	0.1	0.2	-	0.1	-	0.1	0.4
Windsor And Maidenhead UA	-	-	-	-	-	-	-	-	0.1
Wokingham UA	-	-	-	0.1	-	-	-	-	0.1
London Region	0.4	1.3	1.5	3.3	0.2	1.5	0.4	2.1	5.4
South Western Region	0.4	2.4	1.3	4.1	0.2	3.6	0.6	4.5	8.5
Bath And North East Somerset UA	-	-	-	-	-	0.1	-	0.1	0.1
Bournemouth UA	-	-	-	-	-	-	-	-	-
Bristol UA	-	0.2	0.1	0.3	0.1	0.2	-	0.3	0.6
Cornwall And Isles Of Scilly	-	0.1	-	0.2	-	0.2	-	0.3	0.5
Devon	-	0.3	0.1	0.5	-	0.6	0.1	0.7	1.1
Dorset	-	0.1	-	0.1	-	0.1	-	0.2	0.3
Gloucestershire	-	0.2	0.1	0.3	-	0.4	0.1	0.5	0.8
North Somerset UA	-	-	-	0.1	-	0.1	-	0.1	0.2
Plymouth UA	-	-	-	-	-	-	-	-	0.1
Poole UA	-	-	-	0.1	-	-	-	-	0.1

¹ UA: Unitary Authority

Table 21 continued

Thousands

Country/region/local authority	Articulated Vehicles								
	2-axle tractor				3-axle tractor				All
	2-axle trailer	3-axle trailer	any trailer	All	2-axle trailer	3-axle trailer	any trailer	All	
Somerset	0.1	0.7	0.6	1.5	-	1.0	0.2	1.2	2.7
South Gloucestershire UA	-	0.1	-	0.1	-	0.1	-	0.2	0.3
Swindon UA	-	0.3	0.1	0.5	-	0.5	0.1	0.6	1.1
Torbay UA	-	-	-	-	-	-	-	-	-
Wiltshire	0.1	0.2	0.1	0.4	-	0.3	0.1	0.4	0.8
West Midland Region	1.0	3.7	2.6	7.3	0.3	4.0	1.0	5.3	12.6
Herefordshire UA	-	0.1	-	0.1	-	0.2	0.1	0.3	0.4
Shropshire	-	0.2	0.1	0.3	-	0.4	0.1	0.5	0.8
Staffordshire	0.1	0.7	0.9	1.8	0.1	0.8	0.3	1.1	2.9
Stoke On Trent UA	-	0.1	0.1	0.2	-	0.1	-	0.2	0.3
Telford And Wrekin UA	-	0.1	-	0.1	-	0.1	-	0.1	0.3
Warwickshire	0.2	0.7	0.4	1.3	0.1	0.6	0.2	0.8	2.2
West Midlands Metropolitan Area	0.5	1.6	0.8	2.8	0.1	1.4	0.3	1.8	4.7
Worcestershire	0.1	0.2	0.2	0.6	-	0.4	0.1	0.4	1.0
North Western Region	1.2	4.5	2.5	8.2	0.7	7.1	1.6	9.4	17.6
Blackburn With Darwen UA	-	0.1	-	0.1	-	0.1	-	0.1	0.2
Blackpool UA	-	-	-	0.1	-	-	-	-	0.1
Cheshire	0.2	0.7	0.5	1.4	0.2	1.5	0.3	2.1	3.5
Cumbria	-	0.5	0.1	0.6	0.1	1.0	0.2	1.3	1.9
Greater Manchester Metropolitan Area	0.5	2.0	0.9	3.3	0.2	2.3	0.6	3.1	6.4
Halton UA	-	0.1	-	0.1	-	0.2	0.1	0.3	0.4
Lancashire	0.4	0.7	0.6	1.7	0.1	0.9	0.3	1.3	2.9
Merseyside Metropolitan Area	0.1	0.5	0.2	0.7	0.1	0.9	0.1	1.0	1.8
Warrington UA	-	-	0.1	0.1	-	0.2	-	0.2	0.3
Scotland	0.3	2.2	0.7	3.2	0.2	4.0	0.8	5.0	8.2
Aberdeen City UA	-	0.2	-	0.2	-	0.3	-	0.3	0.6
Aberdeenshire UA	-	0.3	-	0.4	-	0.5	-	0.5	0.9
Angus UA	-	0.1	-	0.1	-	0.1	-	0.1	0.2
Argyll And Bute UA	-	-	-	-	-	0.1	-	0.1	0.1
City Of Dundee UA	-	0.1	-	0.1	-	-	-	-	0.2
City Of Edinburgh UA	-	-	-	-	-	-	-	-	0.1
City Of Glasgow UA	-	-	0.1	0.1	-	0.1	-	0.2	0.3
Clackmannanshire UA	-	-	-	-	-	-	-	-	0.1
Comhairle Nan Eilean Siar UA	-	-	-	-	-	-	-	0.1	0.1
Dumfries And Galloway UA	-	0.1	-	0.2	-	0.3	-	0.3	0.5
East Ayrshire UA	-	0.1	-	0.1	-	0.1	-	0.1	0.2
East Dunbartonshire UA	-	-	-	-	-	-	-	-	-
East Lothian UA	-	-	-	-	-	0.1	-	0.1	0.1
East Renfrewshire UA	-	-	-	-	-	-	-	-	-
Falkirk UA	-	0.1	-	0.1	-	0.2	0.1	0.3	0.4
Fife UA	-	0.1	-	0.1	-	0.2	-	0.2	0.3
Highland UA	-	0.1	-	0.1	-	0.2	-	0.2	0.3
Inverclyde UA	-	-	-	-	-	-	-	-	-
Midlothian UA	-	-	-	-	-	-	-	-	0.1
Moray UA	-	0.1	-	0.1	-	0.1	-	0.1	0.2
North Ayrshire UA	-	-	-	-	-	0.1	-	0.1	0.1
North Lanarkshire UA	-	0.2	0.1	0.4	-	0.3	0.1	0.4	0.8
Orkney Islands UA	-	-	-	-	-	-	-	-	-
Perth And Kinross UA	-	-	-	0.1	-	0.1	-	0.1	0.2
Renfrewshire UA	-	-	-	0.1	-	0.3	-	0.4	0.5
Shetland Islands UA	-	-	-	-	-	-	-	-	-
South Ayrshire UA	-	0.1	-	0.1	-	0.1	-	0.1	0.2
South Lanarkshire UA	-	0.2	-	0.3	-	0.2	0.1	0.3	0.5
Stirling UA	-	-	-	0.1	-	0.2	-	0.2	0.3
The Scottish Borders UA	-	0.1	-	0.1	-	0.1	-	0.1	0.2
West Dunbartonshire UA	-	-	-	-	-	-	-	0.1	0.1
West Lothian UA	-	0.1	0.1	0.1	-	0.2	-	0.2	0.3
Wales	0.3	1.3	0.7	2.3	0.1	1.6	0.3	2.0	4.3
Blaenau Gwent UA	-	-	-	-	-	-	-	-	0.1
Bridgend UA	-	-	-	0.1	-	0.2	-	0.2	0.3
Caerphilly UA	-	-	-	0.1	-	0.1	-	0.1	0.2
Cardiff UA	-	0.1	0.1	0.1	-	0.1	-	0.1	0.2
Carmarthenshire UA	-	0.2	-	0.2	-	0.2	-	0.3	0.5
Ceredigion UA	-	-	-	-	-	-	-	0.1	0.1
Conwy UA	-	-	-	-	-	-	-	-	0.1
Denbighshire UA	-	-	-	-	-	0.1	-	0.1	0.1
Flintshire UA	-	0.1	0.3	0.4	-	0.1	-	0.2	0.5
Gwynedd UA	-	-	-	-	-	-	-	0.1	0.1
Isle Of Anglesey UA	-	-	-	-	-	-	-	0.1	0.1
Merthyr Tydfil UA	-	-	-	-	-	-	-	-	-
Monmouthshire UA	-	0.1	-	0.2	-	-	-	-	0.2
Neath Port Talbot UA	-	0.1	-	0.1	-	-	-	-	0.1
Newport UA	-	0.1	-	0.2	-	0.2	-	0.2	0.4
Pembrokeshire UA	-	0.1	-	0.1	-	0.1	-	0.1	0.2
Powys UA	-	0.1	-	0.1	-	0.1	-	0.2	0.3
Rhondda, Cynon, Taff UA	-	0.1	-	0.2	-	-	-	-	0.2
Swansea UA	-	-	-	0.1	-	-	-	0.1	0.1
The Vale Of Glamorgan UA	-	0.1	-	0.1	-	0.1	-	0.1	0.3
Torfaen UA	-	-	-	0.1	-	-	-	-	0.1
Wrexham UA	-	0.1	-	0.1	-	0.1	-	0.1	0.2

Table 21 continued

Thousands

Country/region/local authority	Rigid Vehicles				All goods vehicles
	2-axle	3-axle	4-axle	All	
Great Britain	255.0	37.7	21.6	314.3	429.7
Vehicle Under Disposal	3.6	0.2	0.2	4.0	5.2
County Uncoded	1.5	0.2	0.1	1.8	2.4
England	222.8	32.0	18.7	273.5	374.6
North Eastern Region	7.7	1.4	0.8	9.9	14.2
Darlington UA	0.3	-	0.1	0.4	0.6
Durham	1.6	0.5	0.3	2.3	3.5
Hartlepool UA	0.2	0.1	-	0.3	0.3
Middlesbrough UA	0.2	-	-	0.3	0.4
Northumberland	0.9	0.2	0.2	1.2	1.8
Redcar And Cleveland UA	0.2	-	-	0.2	0.5
Stockton-On-Tees UA	0.9	0.1	-	1.1	1.6
Tyne And Wear Metropolitan Area	3.5	0.5	0.2	4.2	5.5
Yorkshire And Humberside Region	21.0	3.2	1.6	25.8	38.9
East Riding Of Yorkshire UA	1.0	0.3	0.1	1.4	2.5
Kingston Upon Hull UA	1.3	0.2	0.1	1.5	2.5
North East Lincolnshire UA	0.3	0.1	-	0.4	1.0
North Lincolnshire UA	0.6	0.1	-	0.8	1.5
North Yorkshire	3.5	0.7	0.3	4.5	6.7
South Yorkshire Metropolitan Area	4.4	0.7	0.5	5.5	7.5
West Yorkshire Metropolitan Area	9.6	1.1	0.5	11.3	16.5
York UA	0.4	0.1	-	0.4	0.5
East Midland Region	25.5	3.2	1.9	30.6	43.0
Derby UA	0.8	0.1	-	0.9	1.0
Derbyshire	9.3	0.7	0.5	10.4	13.1
Leicester City UA	0.9	0.1	-	1.1	1.4
Leicestershire	2.9	0.5	0.5	3.9	5.2
Lincolnshire	2.8	0.4	0.2	3.4	5.8
Northamptonshire	4.3	0.7	0.2	5.3	8.9
Nottingham UA	1.3	0.1	-	1.5	2.0
Nottinghamshire	3.0	0.6	0.4	4.0	5.3
Rutland UA	0.1	-	-	0.1	0.3
East Of England Region	25.5	4.2	2.8	32.5	48.1
Bedfordshire	2.1	0.5	0.3	2.9	4.1
Cambridgeshire	2.5	0.5	0.3	3.3	5.6
Essex	5.5	1.3	0.7	7.5	9.3
Hertfordshire	6.2	0.8	0.5	7.5	9.2
Luton UA	0.6	0.1	0.1	0.7	0.9
Norfolk	3.2	0.4	0.4	4.0	6.2
Peterborough UA	0.6	0.1	0.1	0.7	1.0
Southend-On-Sea UA	0.4	-	-	0.4	0.5
Suffolk	3.7	0.4	0.2	4.4	9.0
Thurrock UA	0.7	0.2	0.3	1.1	2.3
South Eastern Region	33.7	4.5	3.0	41.1	52.9
Bracknell Forest UA	0.5	-	-	0.6	0.9
Brighton And Hove UA	0.9	-	-	1.0	1.1
Buckinghamshire	1.7	0.5	0.5	2.8	3.2
East Sussex	1.4	0.2	0.1	1.6	2.0
Hampshire	4.9	0.5	0.4	5.8	7.0
Isle Of Wight UA	0.3	-	-	0.4	0.4
Kent	4.9	0.7	0.6	6.2	8.5
Medway UA	0.8	0.1	0.1	1.0	1.3
Milton Kynes UA	3.3	0.6	0.2	4.1	7.9
Oxfordshire	2.5	0.4	0.2	3.1	3.9
Portsmouth UA	0.4	0.1	-	0.5	0.6
Reading UA	1.4	0.1	-	1.6	1.7
Slough UA	1.8	0.2	-	2.0	2.4
Southampton UA	0.6	0.1	0.1	0.7	0.9
Surrey	4.0	0.6	0.3	4.9	5.4
West Berkshire UA	0.5	0.1	-	0.6	0.8
West Sussex	2.4	0.3	0.2	2.9	3.3
Windsor And Maidenhead UA	0.7	0.1	-	0.8	0.9
Wokingham UA	0.5	0.1	-	0.6	0.7
London Region	18.2	2.1	1.9	22.2	27.6
South Western Region	20.6	4.0	1.8	26.4	34.9
Bath And North East Somerset UA	0.4	0.2	-	0.7	0.8
Bournemouth UA	0.3	-	-	0.3	0.3
Bristol UA	3.1	0.4	0.2	3.7	4.3
Cornwall And Isles Of Scilly	2.0	0.4	0.1	2.5	2.9
Devon	2.5	0.6	0.2	3.3	4.4
Dorset	1.4	0.2	0.1	1.7	2.0
Gloucestershire	2.0	0.3	0.2	2.4	3.2
North Somerset UA	0.6	0.1	0.1	0.8	1.0
Plymouth UA	0.4	0.1	-	0.5	0.6
Poole UA	0.4	0.1	-	0.5	0.6

Table 21 continued

Thousands

Country/region/local authority	Rigid Vehicles				All goods vehicles
	2-axle	3-axle	4-axle	All	
Somerset	2.5	0.8	0.3	3.6	6.3
South Gloucestershire UA	1.0	0.4	0.3	1.6	1.9
Swindon UA	2.0	0.1	-	2.2	3.3
Torbay UA	0.2	-	-	0.2	0.3
Wiltshire	1.8	0.3	0.2	2.4	3.1
West Midland Region	34.9	4.3	2.1	41.4	54.0
Herefordshire UA	0.9	0.2	0.1	1.1	1.5
Shropshire	2.2	0.3	0.2	2.6	3.5
Staffordshire	5.2	0.8	0.6	6.6	9.5
Stoke On Trent UA	1.0	0.1	-	1.2	1.5
Telford And Wrekin UA	0.6	0.1	0.1	0.8	1.1
Warwickshire	5.2	0.4	0.2	5.8	8.0
West Midlands Metropolitan Area	17.0	2.1	0.9	20.0	24.7
Worcestershire	2.8	0.3	0.1	3.2	4.3
North Western Region	35.6	5.1	2.9	43.5	61.0
Blackburn With Darwen UA	0.6	0.1	-	0.7	1.0
Blackpool UA	0.3	-	-	0.3	0.4
Cheshire	2.7	0.6	0.4	3.7	7.1
Cumbria	1.9	0.6	0.2	2.7	4.6
Greater Manchester Metropolitan Area	20.2	2.3	1.3	23.9	30.3
Halton UA	0.4	0.1	0.1	0.5	0.9
Lancashire	5.8	0.8	0.6	7.1	10.0
Merseyside Metropolitan Area	3.1	0.5	0.3	3.9	5.7
Warrington UA	0.6	0.1	-	0.7	1.0
Scotland	17.0	3.6	1.6	22.2	30.4
Aberdeen City UA	0.7	0.1	-	0.8	1.4
Aberdeenshire UA	0.9	0.2	0.1	1.2	2.1
Angus UA	0.2	0.1	-	0.4	0.6
Argyll And Bute UA	0.3	0.1	-	0.4	0.5
City Of Dundee UA	0.5	0.2	-	0.7	0.9
City Of Edinburgh UA	0.7	0.1	-	0.8	0.9
City Of Glasgow UA	1.8	0.3	0.1	2.2	2.5
Clackmannanshire UA	0.1	-	-	0.1	0.2
Comhairle Nan Eilean Siar UA	0.1	0.1	-	0.2	0.3
Dumfries And Galloway UA	0.8	0.1	0.1	1.0	1.5
East Ayrshire UA	0.3	0.1	-	0.4	0.7
East Dunbartonshire UA	0.1	-	-	0.2	0.2
East Lothian UA	0.2	-	-	0.3	0.4
East Renfrewshire UA	0.1	-	-	0.1	0.2
Falkirk UA	0.5	0.1	0.1	0.7	1.1
Fife UA	0.8	0.2	0.1	1.1	1.4
Highland UA	0.8	0.2	0.1	1.2	1.5
Inverclyde UA	0.1	-	-	0.1	0.2
Midlothian UA	0.2	0.1	-	0.3	0.4
Moray UA	0.3	0.1	-	0.4	0.5
North Ayrshire UA	0.3	0.1	-	0.4	0.6
North Lanarkshire UA	1.5	0.3	0.2	2.0	2.8
Orkney Islands UA	0.1	-	-	0.2	0.2
Perth And Kinross UA	0.5	0.1	-	0.6	0.8
Renfrewshire UA	0.5	0.1	0.1	0.7	1.2
Shetland Islands UA	0.1	0.1	-	0.2	0.3
South Ayrshire UA	0.3	0.1	-	0.4	0.6
South Lanarkshire UA	1.2	0.3	0.2	1.7	2.2
Stirling UA	0.7	0.1	-	0.8	1.1
The Scottish Borders UA	1.1	0.1	-	1.2	1.5
West Dunbartonshire UA	0.1	-	-	0.2	0.2
West Lothian UA	0.7	0.1	0.1	1.0	1.3
Wales	10.2	1.7	1.0	12.9	17.2
Blaenau Gwent UA	0.1	-	-	0.2	0.2
Bridgend UA	0.4	-	0.1	0.4	0.7
Caerphilly UA	0.5	0.1	-	0.6	0.8
Cardiff UA	0.7	0.1	0.1	0.9	1.1
Carmarthenshire UA	0.9	0.2	0.1	1.1	1.6
Ceredigion UA	0.4	0.1	-	0.4	0.5
Conwy UA	0.4	-	0.1	0.5	0.6
Denbighshire UA	0.3	0.1	0.1	0.5	0.6
Flintshire UA	0.7	0.1	0.1	1.0	1.5
Gwynedd UA	0.6	0.1	0.1	0.7	0.8
Isle Of Anglesey UA	0.3	-	-	0.3	0.4
Merthyr Tydfil UA	0.1	-	-	0.1	0.2
Monmouthshire UA	0.4	0.1	-	0.5	0.7
Neath Port Talbot UA	0.3	-	0.1	0.4	0.5
Newport UA	0.5	0.1	0.1	0.7	1.1
Pembrokeshire UA	0.4	0.1	-	0.6	0.8
Powys UA	0.9	0.2	0.1	1.2	1.5
Rhondda, Cynon, Taff UA	0.6	0.1	0.1	0.7	0.9
Swansea UA	0.8	-	-	0.8	0.9
The Vale Of Glamorgan UA	0.3	0.1	-	0.4	0.6
Torfaen UA	0.2	-	-	0.2	0.3
Wrexham UA	0.4	0.1	-	0.5	0.7

Table 22 Goods vehicle stock at end of year: 1991 - 2001: by year of 1st registration

Thousands

Year of 1st registration	1991	1992	1993	1994	1995	1996	1997	1998	1999	2000	2001
Rigid vehicles											
Pre 1979				6.3	4.8	4.3	4.0	3.6	3.1	2.7	2.4
1979				3.5	2.4	1.8	1.5	1.1	0.9	0.7	0.6
1980	57.6			4.2	2.9	2.2	1.7	1.3	1.0	0.8	0.7
1981		57.9		4.4	3.1	2.4	1.9	1.4	1.1	0.8	0.7
1982			63.7	6.9	5.0	3.8	2.9	2.1	1.6	1.2	0.9
1983	19.4			10.9	8.2	6.4	4.9	3.7	2.7	2.0	1.5
1984	23.5	20.5		14.9	12.0	9.4	7.2	5.4	4.1	3.1	2.2
1985	28.1	25.1	22.4	19.8	16.2	13.4	11.0	8.5	6.6	5.0	3.7
1986	30.5	28.0	25.4	22.8	18.4	16.1	13.4	10.6	8.4	6.4	4.8
1987	34.2	32.2	30.4	28.3	24.0	21.6	18.7	15.4	12.5	9.8	7.8
1988	41.5	39.8	38.1	36.0	33.3	29.9	26.6	22.6	18.9	15.4	12.3
1989	43.4	42.2	41.2	39.3	36.6	33.5	30.3	26.4	22.7	18.6	15.2
1990	31.6	31.2	30.8	29.7	28.2	26.0	24.0	21.1	18.5	15.7	12.9
1991	20.0	20.2	20.2	19.6	19.3	17.8	16.6	15.0	13.4	11.5	9.8
1992		19.1	19.7	19.2	18.9	18.0	16.8	15.5	14.5	12.9	11.2
1993			20.6	21.1	21.1	20.4	19.5	17.7	16.7	15.3	13.8
1994				25.5	26.3	25.7	24.9	23.5	22.1	20.7	19.3
1995					29.8	30.0	29.2	28.0	27.1	24.9	23.5
1996						28.4	28.7	27.8	26.9	25.9	23.9
1997							26.3	26.7	25.3	24.8	24.1
1998								32.4	31.7	30.4	29.1
1999									30.9	30.2	29.0
2000										32.4	31.9
2001											33.0
All years	329.9	316.2	312.5	312.4	310.5	311.0	310.2	309.9	310.9	311.0	314.3
Articulated vehicles											
Pre 1979				0.4	0.3	0.2	0.2	0.2	0.2	0.2	0.1
1979				0.4	0.2	0.2	0.1	0.1	-	-	-
1980	8.9			0.4	0.2	0.1	0.1	-	-	-	-
1981		9.5		0.5	0.3	0.2	0.1	-	-	-	-
1982			10.8	1.1	0.6	0.3	0.2	0.1	0.1	0.1	-
1983	4.4			1.9	1.2	0.8	0.5	0.3	0.1	0.1	0.1
1984	6.7	5.6		3.5	2.6	1.7	1.1	0.7	0.4	0.2	0.1
1985	8.7	7.5	6.0	5.0	3.7	2.7	1.8	1.1	0.7	0.4	0.3
1986	9.7	8.6	7.1	6.1	4.4	3.4	2.4	1.5	1.0	0.6	0.3
1987	11.9	11.0	9.7	8.6	6.7	5.4	4.1	2.8	1.9	1.2	0.7
1988	15.4	14.6	13.3	12.4	10.6	8.7	7.0	4.9	3.4	2.2	1.3
1989	16.3	15.9	14.7	13.9	12.4	10.3	8.7	6.4	4.8	3.2	2.1
1990	10.2	10.1	9.5	9.2	8.4	7.3	6.2	4.8	3.7	2.5	1.7
1991	7.4	7.4	7.2	6.9	6.5	5.8	5.1	4.1	3.2	2.3	1.6
1992		8.5	8.4	8.1	7.6	7.0	6.4	5.2	4.4	3.3	2.3
1993			10.7	10.8	10.4	9.6	9.0	7.7	6.8	5.5	4.2
1994				14.0	14.0	13.5	12.9	11.1	9.6	8.0	6.5
1995					17.2	16.8	16.4	14.4	13.0	11.3	9.5
1996						15.8	15.6	14.7	12.5	11.4	9.6
1997							14.4	14.2	13.0	11.7	10.5
1998								16.9	15.9	15.6	13.5
1999									17.1	16.8	16.3
2000										18.0	17.3
2001											17.3
All years	99.7	98.7	97.5	103.3	107.4	109.6	112.2	111.3	111.9	114.5	115.5
Rigid and articulated vehicles											
Pre 1979				6.8	5.0	4.5	4.1	3.7	3.3	2.9	2.5
1979				3.9	2.6	2.0	1.6	1.1	0.9	0.7	0.6
1980	66.4			4.6	3.1	2.3	1.8	1.3	1.1	0.8	0.7
1981		67.4		4.8	3.3	2.5	1.9	1.4	1.1	0.9	0.7
1982			74.5	8.0	5.6	4.1	3.1	2.3	1.7	1.2	1.0
1983	23.9			12.9	9.5	7.2	5.4	4.0	2.9	2.1	1.6
1984	30.3	26.0		18.4	14.6	11.0	8.4	6.1	4.5	3.3	2.4
1985	36.8	32.6	28.5	24.9	19.9	16.1	12.8	9.6	7.3	5.4	4.0
1986	40.2	36.6	32.6	28.8	22.8	19.5	15.8	12.2	9.4	7.0	5.2
1987	46.1	43.2	40.2	36.9	30.7	27.0	22.8	18.2	14.4	11.0	8.5
1988	56.9	54.4	51.4	48.4	43.9	38.6	33.6	27.5	22.3	17.6	13.7
1989	59.8	58.1	55.9	53.2	49.0	43.8	39.0	32.8	27.5	21.8	17.2
1990	41.8	41.3	40.3	38.9	36.6	33.2	30.1	25.9	22.2	18.2	14.5
1991	27.4	27.6	27.4	26.5	25.7	23.6	21.7	19.1	16.6	13.8	11.4
1992		27.6	28.0	27.4	26.5	25.0	23.2	20.7	18.9	16.2	13.5
1993			31.3	31.9	31.5	29.9	28.5	25.4	23.5	20.8	18.0
1994				39.5	40.3	39.2	37.8	34.6	31.8	28.7	25.8
1995					47.1	46.8	45.6	42.4	40.2	36.2	33.1
1996						44.2	44.3	42.6	39.3	37.3	33.5
1997							40.7	41.0	38.3	36.5	34.5
1998								49.2	47.6	45.9	42.6
1999									48.0	47.0	45.3
2000										50.3	49.2
2001											50.3
All years	429.6	414.9	410.1	415.7	417.9	420.6	422.4	421.2	422.8	425.4	429.7

Table 23 Goods vehicle stock at end of year: 1991 - 2001: by gross vehicle weight

Thousands

Over	Not over	1991	1992	1993	1994	1995	1996	1997	1998	1999	2000	2001
Rigid vehicles												
3.5 t	7.5 t	157.8	152.0	151.4	150.2	150.8	153.3	153.9	155.8	156.6	157.1	157.2
7.5 t	12 t	18.5	17.2	16.6	15.9	16.0	15.7	15.4	14.6	14.3	13.9	13.3
12 t	16 t	26.0	24.3	23.5	22.7	23.1	22.2	21.5	20.7	20.7	20.3	19.7
16 t	20 t	80.9	77.9	75.6	75.7	74.0	73.1	71.3	69.0	67.5	65.6	65.7
20 t	24 t	2.5	2.7	3.0	3.4	3.9	4.7	5.4	6.3	7.1	7.9	8.2
24 t	28 t	24.5	23.3	23.2	24.0	23.4	23.6	23.9	24.5	25.6	26.8	28.8
28 t	32 t	19.5	18.6	18.5	19.9	19.1	18.4	18.7	18.9	19.0	19.3	20.9
32 t		0.2	0.2	0.6	0.6	-	-	-	-	-	0.1	0.4
All weights		329.9	316.2	312.5	312.4	310.5	311.0	310.2	309.9	310.9	311.0	314.3
Articulated vehicles												
3.5 t	16 t	0.4	0.3	0.3	0.3	0.4	0.3	0.3	0.3	0.3	0.2	0.2
16 t	20 t	2.1	1.9	1.7	1.5	1.4	1.3	1.1	0.8	0.9	0.7	0.6
20 t	24 t	1.0	1.1	1.1	1.2	1.3	1.4	1.5	1.8	2.0	2.0	1.9
24 t	28 t	9.2	9.3	9.3	9.6	10.0	10.2	10.2	10.2	11.1	11.1	10.3
28 t	32 t	0.9	1.0	1.1	1.7	2.2	2.4	2.7	2.9	3.6	3.9	4.3
32 t	33 t	23.2	19.9	18.1	17.0	14.8	13.0	11.6	10.1	9.1	7.9	6.2
33 t	37 t	1.5	1.7	1.5	1.3	1.4	1.5	1.7	1.8	2.3	2.6	2.7
37 t	38 t	61.3	63.5	64.4	70.4	75.3	78.2	81.2	80.2	57.4	46.9	36.5
38 t		-	-	-	0.2	0.7	1.2	1.9	3.3	25.1	39.3	52.8
All weights		99.7	98.7	97.5	103.3	107.4	109.6	112.2	111.3	111.9	114.5	115.5
Rigid and articulated vehicles												
3.5 t	7.5 t	158.1	152.2	151.6	150.4	151.0	153.5	154.1	156.0	156.8	157.2	157.4
7.5 t	12 t	18.5	17.2	16.6	16.0	16.0	15.8	15.4	14.7	14.3	13.9	13.4
12 t	16 t	26.1	24.4	23.6	22.8	23.2	22.3	21.6	20.8	20.8	20.3	19.7
16 t	20 t	83.0	79.8	77.2	77.2	75.5	74.4	72.4	69.8	68.4	66.3	66.3
20 t	24 t	3.5	3.8	4.1	4.6	5.2	6.1	6.9	8.1	9.1	9.8	10.1
24 t	28 t	33.7	32.7	32.5	33.5	33.4	33.8	34.1	34.7	36.8	38.0	39.0
28 t	32 t	20.4	19.5	19.6	21.6	21.3	20.9	21.5	21.8	22.6	23.1	25.2
32 t	38 t	86.2	85.3	84.6	89.2	91.5	92.7	94.5	92.1	68.9	57.4	45.6
38 t		0.0	0.0	0.2	0.4	0.7	1.2	1.9	3.3	25.2	39.3	53.0
All weights		429.6	414.9	410.1	415.7	417.9	420.6	422.4	421.2	422.8	425.4	429.7

**Table 24 Goods vehicle stock at end of year: 1996 - 2001:
by gross vehicle weight and axle configuration**

		Thousands												
Axles	Year	Over Not over	3.5 t 7.5 t	7.5 t 12 t	12 t 16 t	16 t 20 t	20 t 24 t	24 t 28 t	28 t 32 t	32 t 33 t	33 t 37 t	37 t 38 t	38 t	All weights
Rigid vehicles														
2 Axles	1996		153.1	15.7	21.9	72.6	-	0.0	0.0	-	0.0	0.0	0.0	263.2
	1997		153.8	15.3	21.3	70.8	0.0	0.0	0.0	0.0	0.0	0.0	-	261.1
	1998		155.6	14.5	20.5	68.4	-	0.0	0.0	-	0.0	-	0.0	259.1
	1999		156.4	14.2	20.5	66.8	-	-	-	-	-	-	-	257.9
	2000		156.9	13.8	20.1	64.9	-	-	-	-	-	-	-	255.7
	2001		157.0	13.3	19.5	64.9	0.1	0.1	-	-	-	-	-	255.0
	3 Axles	1996		0.1	0.1	0.1	0.4	4.6	23.5	0.0	0.0	0.0	0.0	0.0
1997			0.1	0.1	0.1	0.5	5.4	23.8	0.0	0.0	0.0	0.0	0.0	29.9
1998			0.1	0.1	0.1	0.5	6.3	24.4	0.0	0.0	0.0	0.0	0.0	31.4
1999			0.2	0.1	0.1	0.6	7.1	25.4	-	0.0	0.0	-	-	33.4
2000			0.2	0.1	0.1	0.7	7.8	26.5	-	-	-	-	-	35.4
2001			0.2	0.1	0.1	0.7	8.1	28.4	-	-	-	-	0.1	37.7
4 Axles		1996		0.1	-	0.2	0.1	-	0.1	18.4	0.0	0.0	0.0	0.0
	1997		0.1	-	0.2	0.1	-	0.2	18.7	0.0	0.0	0.0	0.0	19.2
	1998		0.1	-	0.1	0.1	-	0.2	18.9	0.0	0.0	0.0	0.0	19.4
	1999		0.1	-	0.2	0.1	-	0.3	19.0	0.0	0.0	0.0	-	19.6
	2000		0.1	-	0.1	0.1	-	0.3	19.3	-	-	-	-	19.9
	2001		-	-	0.1	0.1	-	0.3	20.9	-	-	-	0.1	21.6
	All	1996		153.3	15.7	22.2	73.1	4.7	23.6	18.4	-	0.0	0.0	0.0
1997			153.9	15.4	21.5	71.3	5.4	23.9	18.7	0.0	0.0	0.0	-	310.2
1998			155.8	14.6	20.7	69.0	6.3	24.5	18.9	-	0.0	-	0.0	309.9
1999			156.6	14.3	20.7	67.5	7.1	25.6	19.0	-	-	-	-	310.9
2000			157.1	13.9	20.3	65.6	7.9	26.8	19.3	-	-	0.1	0.1	311.0
2001			157.2	13.3	19.7	65.7	8.2	28.8	20.9	-	-	0.1	0.2	314.3
Articulated vehicles														
2 Axle tractive units	1996		0.2	-	-	1.3	1.3	9.7	2.4	12.5	1.3	44.2	-	72.9
	1997		0.1	-	-	1.1	1.4	9.8	2.6	11.2	1.4	46.2	-	74.0
	1998		0.1	-	-	0.8	1.7	9.8	2.7	9.6	1.5	45.3	0.3	72.3
	1999		0.1	-	-	0.8	1.9	10.7	3.4	8.4	1.9	30.9	5.2	63.5
	2000		0.1	-	-	0.7	1.9	10.7	3.6	7.1	2.0	23.6	8.6	58.4
	2001		0.1	-	-	0.6	1.9	9.9	4.0	5.5	2.3	19.2	11.0	54.4
	3 Axle tractive units	1996		0.1	-	-	0.1	0.1	0.5	0.1	0.5	0.2	34.0	1.2
1997			0.1	-	-	-	0.1	0.4	0.1	0.4	0.3	35.0	1.9	38.2
1998			-	-	-	-	0.1	0.4	0.1	0.5	0.3	34.8	3.0	39.4
1999			-	-	-	-	0.1	0.4	0.2	0.6	0.5	26.5	19.9	48.4
2000			-	-	-	-	0.1	0.4	0.3	0.8	0.5	23.2	30.7	56.1
2001			-	-	-	-	0.1	0.4	0.3	0.7	0.4	17.3	41.8	61.1
All		1996		0.2	-	0.1	1.3	1.4	10.2	2.4	13.0	1.5	78.2	1.2
	1997		0.2	-	0.1	1.1	1.5	10.2	2.7	11.6	1.7	81.2	1.9	112.2
	1998		0.2	-	0.1	0.8	1.8	10.2	2.9	10.1	1.8	80.2	3.3	111.3
	1999		0.2	-	0.1	0.9	2.0	11.1	3.6	9.1	2.3	57.4	25.1	111.9
	2000		0.2	-	-	0.7	2.0	11.1	3.9	7.9	2.6	46.9	39.3	114.5
	2001		0.1	-	-	0.6	1.9	10.3	4.3	6.2	2.7	36.5	52.8	115.5

VEHICLE LICENSING STATISTICS - NOTES

In order to understand better the figures presented in this report, the following notes explain some of the definitions involved and some of the changes that are important in understanding historical series.

Tax classes

All vehicles are classified according to their tax class. This reflects the way in which the vehicle is used and different rates of Vehicle Excise Duty (VED) are payable according to the tax class and tax band in which the vehicle is. In some cases, the precise tax band depends upon certain vehicle characteristics such as engine size, emission rates, gross weight, number of axles or, in the case of public transport vehicles, the number of seats. There have been many changes to the taxation classes over the years and the main ones are described below. Current tax classes are:

Private and Light Goods (PLG)

This is by far the most common tax class, covering almost 89 per cent of licensed vehicles. This tax class primarily consists of cars and light vans but can include other vehicles used only for private purposes. Tax bands within PLG generally depend on engine size although since March 2001, tax bands for new cars are based upon emission levels with lower rates for cleaner vehicles.

Exempt classes

There are various ways in which vehicles can be exempt from paying VED. Some vehicles are required to renew VED but pay nothing for it whereas others do not need a licence. The main categories are: vehicles with disabled drivers or used to transport disabled passengers; emergency or crown vehicles and those that were manufactured in 1972 or earlier. The final of these categories was only given exempt status in November 1997, at which time it covered vehicles over 25 years old instead.

Motorcycles, scooters and mopeds

This is a self-explanatory tax class, although three wheeled vehicles are also included in their own tax band. VED rates depend upon engine size and for a vehicle under 150cc, rates can be as low as £15 per year. Motorcycle stock figures are subject to some underestimation - see the following Annex for details.

Goods vehicles

Vehicles that have a gross weight of over three and a half tonnes and which are used for carrying goods are taxed in this class. Levels of VED vary considerably, from annual rates the same as PLG up to £1,850. Generally, VED depends on the maximum gross weight and the axle configuration of the vehicle. Broadly speaking, the more weight per axle that the lorry carries, the higher the VED rate will be. However, since 1999 reduced rates have been available for vehicles that create less pollution.

Special concessionary vehicles

This group consists mainly of agricultural vehicles such as tractors. Also included are machines for mowing, gritting or ploughing and those powered by steam or electricity (apart from motorcycles). Vehicles in this tax class are subject to a flat rate VED.

Buses

This category covers public transport vehicles with more than 8 seats (excluding the driver). There are four categories used to determine the VED rate: 9-16, 17-35, 36-60 and 61+. Since the beginning of 1999, as for goods vehicles, another range of tax bands has been created for reduced pollution vehicles.

Special vehicles

This category contains vehicles heavier than three and a half tonnes, which are not eligible for a special concession, but which are not taxed as goods vehicles. This tends to include vehicles like mobile cranes, works truck, road rollers and showman's vehicles.

Other vehicles

This includes recovery vehicles, general haulage vehicles and small island vehicles. Again, general haulage vehicles are subject to a reduced rate if they have reduced pollution.

Historical changes to the taxation system

There have been three major changes in recent years. Firstly, as from 1 October 1982, all general goods vehicles less than 1,525 kgs unladen weight were assessed for vehicle excise duty at the same rate as private vehicles, and the old "private car and van" taxation class was replaced by the new "Private and Light Goods" (PLG) taxation class. In addition, goods vehicles greater than 1,525 kgs unladen weight were to be taxed with reference to their gross vehicle weight and axle configuration, as opposed to unladen weight as in previous years. Farmers' light goods vehicles and showmen's light goods vehicles, i.e. vehicles of less than 1,525 kgs unladen weight, were allocated to their own distinct taxation classes and were not included in the PLG taxation class.

Secondly, from 1 October 1990, goods vehicles less than 3,500 kgs gross vehicle weight were transferred from the "Goods Vehicle" taxation class to the "Private and Light Goods" class. Farmers' and showmen's goods vehicles of less than 3,500 kgs gross vehicle weight, but more than 1,525 kgs unladen weight, were transferred to the "Light Goods Farmers" and "Light Goods Showmen's" taxation classes.

Finally 1995 saw major reforms of the vehicle taxation system. The bulk of the 1995 changes came into operation on 1st July 1995, but some additional changes were introduced on 29th November 1995. The intention was to remove many of the complications in the existing taxation structure, using a strategy to link VED rates for many directly to the rate for the PLG group, or the basic minimum rate for HGVs.

In addition, the goods vehicle taxation system was itself considerably simplified by the abolition of separate goods vehicle classes for farmers and showmen. All remaining light goods vehicle taxation classes were also abolished and vehicles in those groups transferred to the PLG class. At the same time, the basis for calculation of excise duty for goods vehicles was amended to "revenue weight". Revenue weight means either "confirmed maximum gross weight" as determined by plating and testing regulations, or "design weight" for vehicles not subject to plating and testing (formerly known as Restricted HGVs).

The process also included further simplifications and "tidying" arrangements. These included cases in which vehicles not over 3500 kgs gross weight were moved into the

private and light goods taxation class rather than remaining in specialised taxation classes and groups, and the re-allocation of some tax classes into more appropriate groups. One key change of a similar type was to abolish the separate taxation of public transport vehicles with eight seats or fewer and tax all such vehicles in the PLG class. From start of July 1995 bigger public transport vehicles were taxed in a new "bus taxation class. The changes were completed by the introduction of a new exempt class in the November 1995 budget for vehicles previously in the private and light goods or motorcycle groups over 25 years of age.

Body type descriptions

In many cases, the tax class of a vehicle is not important, for example in modelling traffic flow. In these cases, it is more important to know what percentage of traffic is likely to consist of cars, vans, lorries etc. For this reason, details are also given for the composition of licensed stock according to the body type of vehicles.

Many of the tables in this report include figures for 'body type cars'. This will include a large proportion of the PLG tax class but will also include most of the exempt tax class as well. For goods vehicles, the majority of goods vehicles are taxed in the goods vehicle tax classes but there are also some that are taxed elsewhere. HGVs can be taxed in the PLG class if they are used for private purposes and not used to carry goods. Also, there are goods vehicles in the exempt classes.

New registrations of vehicles

As well as total licensed stock, it is also important to follow trends in the numbers of new vehicles that are registered in a given year. There are two ways in which these new registrations can be measured.

Generally, new registrations are based on monthly tables supplied by computing contractors acting for the DVLA. These tables summarise all vehicles that come onto the main file for the first time over a given month. For 1999, however, this source was not readily available due to a redesign of the computing systems.

Using the information held about vehicles in the end of year database, it is possible to filter out those that have been first registered each month within a given year. This process should, and in the past has shown to, give results very similar to the monthly system described above.

Therefore, while tables 10 - 13 are constructed on a different basis for 1999 data, there is no significant discontinuity.

Table 13 is a special case for which restructuring was needed in any case. In earlier issues of Vehicle Licensing Statistics, this table showed a monthly series, which was seasonally adjusted to take out the distorting effect of the August peak (when new number plate prefixes were issued). Currently, none of the series is seasonally adjusted because the system of issuing number plate prefixes has changed. Now, new letter prefixes are issued twice yearly - in March and September, with the first of these being in September 1999. This changes the seasonal pattern of demand and means that until there are enough data to provide a new seasonal pattern, it is not possible to seasonally adjust.

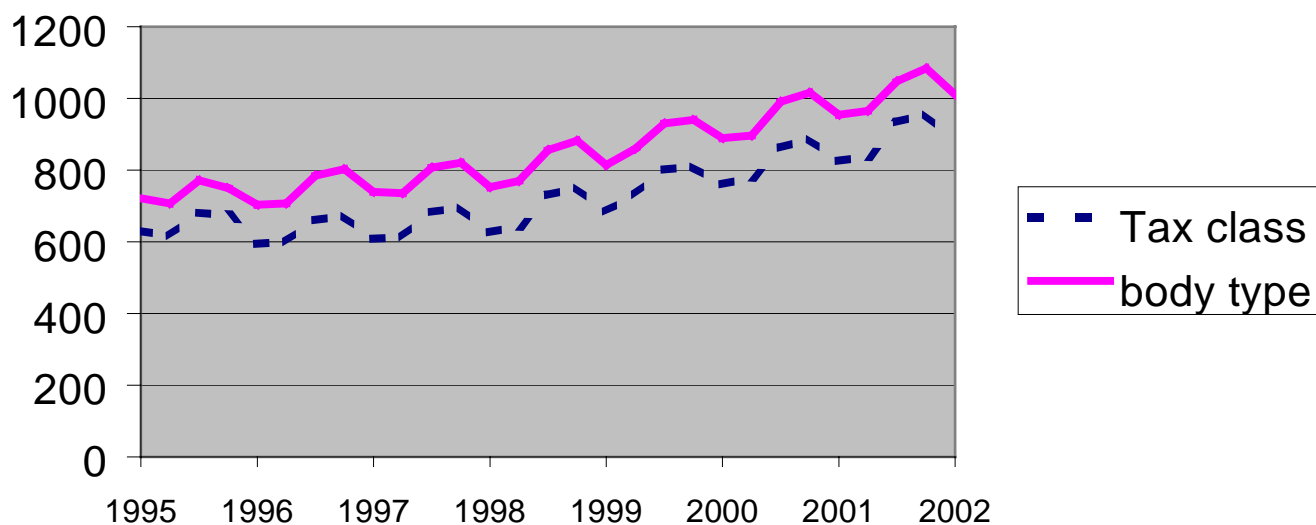
ANNEX: FACTORS AFFECTING VEHICLE STOCK FIGURES

When using vehicle stock data, it is important to bear in mind that the numbers given in this report represent a snapshot in time of a particular measure - the number of vehicles licensed at the end of the year. There are reasons why this measure will not always be the best to use and these are described below.

Seasonality in stock figures

For certain types of vehicle, licensed stock at the end of the year may differ significantly from the stock in the middle of the year. This is especially so with motorcycles and other similar vehicles where large numbers of vehicles may be stored off road and unlicensed during the winter months. Many such vehicles have six month licences covering, for example April to September and are not used for the rest of the year. The end of year figures given in this report are therefore an underestimate of the stock that is used throughout the year. This seasonality is clearly shown in the following chart:

Motorcycle stock (thousands)



Although the motorcycle stock series has been growing over the last few years, the latest figures for the end of 2001 (marked by 2002 on the chart) are lower than in the previous two quarters.

Vehicle Excise Duty evasion

Another factor affecting stock figures is the level of evasion. If the owner of a vehicle is illegally operating a vehicle without a licence, then it is not counted in the stock figures presented here. Evasion, whether unintentional or deliberate, is low, only

accounting for some 3 per cent of the major Private and Light Goods tax class. However, for other tax classes, it is much higher and has a greater effect when considering the difference between vehicle stock figures in this report and the actual number of vehicles in use. Evasion tends to be highest amongst motorcycles and agricultural machines. In these categories, evidence suggests that around 25 per cent and over 35 per cent of stock respectively is evading the VED licence.

For further details of Vehicle Excise Duty evasion, a free statistical report is available from the contact address after the contents page. A further study of VED evasion is being carried out in summer 2002.

Taxation and legislation changes

The factors described above affect the overall levels of stock. Taxation changes will tend to result in stock shifting from one tax class to another. In some cases, this has resulted in the creation of new tax classes - as in 1995 when there was a major overhaul of the whole taxation system. More recently, there have been more subtle changes but ones which have still changed the distribution of vehicles across the tax classes.

A good example of the above is the recent increases within the exempt categories, as shown clearly in table 1. One of the main reasons for the large increases over the last few years has been the introduction of an exemption for vehicles that are over 25 years old (or, as it is now, an exemption for vehicles registered before the start of 1973). More recently, there have also been changes in legislation affecting heavy goods vehicles.

Scottish Executive

Transport Publications

Road Accidents Scotland 2000	£10
Scottish Transport Statistics No.20: 2001	£10
Key 2000 Road Accidents Statistics Bulletin	£2
Transport Across Scotland: some Scottish Household Survey Results	£2
Household Transport: Some Scottish Household Survey Results	£2
Travel by Scottish Residents: some National Travel Survey Results	£2

Other Publications with Transport Topics

Scottish Social Statistics 2001	£25
Key Scottish Environment Statistics 1998	£20
Scottish Economic Statistics 2001	£25

General enquires on Scottish Transport Statistics:
Scottish Executive Development Department,
Transport Statistics Branch, Area 3-G13, Victoria
Quay, Edinburgh EH6 6QQ
Phone: +44 (0)131-244 7255
Fax: +44 (0)131-244 0888
E-mail: transtat@scotland.gov.uk
Internet: www.scotland.gov.uk

These publications are available, payment with orders, from: The Stationery Office bookshop
71 Lothian Road, Edinburgh EH3 9AZ
Phone: +44 (0)131 622 7050. Fax: +44 (0)131 622 7017

National Assembly for Wales - Cynulliad Cenedlaethol Cymru

Transport Publications

1999 Road Accidents: Wales	£10
Welsh Transport Statistics 2000	£10

Other publications with transport topics

Digest of Welsh Local Area Statistics 2001	£20
Digest of Welsh Statistics 2000	£15
Statistics for Assembly Constituency Areas 1998	£15
Digest of Welsh Historical Statistics 1974-96	£20

These publications are available from:
Publications Unit, Statistical Directorate
National Assembly for Wales
Cathays Park, Cathays, Cardiff CF1 3NQ

Telephone: +44 (0)29-20825050
E-mail: stats.pubs@wales.gov.uk
Internet: www.wales.gov.uk

Northern Ireland Transport Statistics

Available from:
Central Statistics and Research Branch
Department of the Environment, Clarence Court,
10-18 Adelaide Street, Belfast BT2 8GB
Tel: +44 (0)1232-540801
E-mail: csrb.doe.@nics.gov.uk
Internet: www.doeni.gov.uk/statistics/transport.htm

Transport Statistics Users Group

The Transport Statistics Users Group (TSUG) was set up in 1985 as a result of an initiative by the Statistics Users Council and the Chartered Institute of Transport (now known as The Institute of Logistics and Transport). From its inception it has had strong links with the Department of Transport, Local Government and the Regions. The aims of the Group are:

- to identify problems in the collection, provision, use and understanding of transport statistics, and to discuss solutions with the responsible authorities;
- to provide a forum for the exchange of views and information between users and providers of transport statistics;
- to encourage the proper use of statistics through publicity and education.

The Group holds regular seminars on topical subjects connected with the provision and/or use of transport statistics. Recent seminars have included:

- Transport Statistics on the internet
- Aviation Statistics
- Parking Statistics
- Transport and social exclusion
- National Travel Survey User Consultation
- Transport Information Needs of the North of England
- How did you get to the Millennium Dome?

A newsletter is sent to all members about four times a year. Corporate membership of the Group is £50, personal membership £22.50, and student membership £10. For further details please contact:

Mr Fred Hitchins or
TSUG Membership Secretary
Information Research Network,
Greenhill House, 90-93 Cowcross Street
London EC1M 6BF
☎ 020 7251-4040
Fax: 020 7251-8542
Email: tsug@irn-research.com
Web: www.irn-research.com/tsug.html

Mr Peter Norgate
Chairman TSUG
Mott MacDonald, Transportation & Planning
St Anne Hse, 20-26 Wellesley Road
Croydon CR9 2RL
☎ 020 8774-2888
Fax: 020 8681-5706
Email: pjn@mm-croy.mottmac.com

The TSUG has contributed to the production of the *Transport Year Book 2001*. This contains information on sources from Governmental and non-governmental organisations, including some European sources. One copy is supplied free to TSUG members. Non-members can purchase a copy from The Stationery Office (TSO) for £40.

Transport Statistics Publications (as at January 2002)

The Stationery Office (TSO) publications (Transport Statistics Reports - priced)

Obtainable from:

TSO Publications Centre

(Mail and telephone orders only)

PO Box 29, Norwich NR3 1GN

Telephone orders & general enquires: +44 (0)870 600 5522

Fax orders: +44 (0)870 600 5533

TSO Bookshops: (see Yellow Pages)

London, Birmingham, Bristol, Manchester, Belfast,
Edinburgh and Cardiff.

TSO's Accredited Agents (see Yellow Pages)

& through good booksellers

Annual Reports – produced by TSO (w.e.f. 1998)

Transport Trends: 2001 edition (ISBN: 0-11-552292-1)

Transport Statistics Great Britain: 2001 Edition
(ISBN: 0-11-552305-7)

Focus on Personal Travel: 2001 Edition (ISBN: 0-11-552302-2)

National Travel Survey: 1998/2000 Update*

Focus on Ports: 2000 Edition (ISBN: 0-11-552216-6)

Focus on Public Transport: 1999 Edition (ISBN: 0-11-552083-X)

Bulletin of Public Transport Statistics: 2001 Edition
(2nd update to the above)*

Focus on Roads: 1998 Edition (ISBN: 0-11-552056-2)

Road Traffic Statistics: 2000 (3rd update to the above)*

Focus on Freight: 1998 Edition (ISBN: 0-11-552054-6)

Road Accidents Great Britain: 2000 (ISBN: 0-11-552303-0)

Maritime Statistics: 2000 (ISBN: 0-11-552335-9)

Walking in Great Britain (ISBN: 0-11-552040-6)

Cycling in Great Britain (ISBN: 0-11-551864-9)

* These are free annual bulletins produced by Transport Statistics.

Available from DTLR Publication Sales Centre:

☎ +44 (0)1709 891318

Cross Channel Passenger Traffic (ISBN: 1-85112-167-6)

Origin and Destination Survey of UK International Trade: 1996
(ISBN: 1-85112-145-5)

Traffic Speeds on English Trunk Roads: 1998 (ISBN: 1-85112-180-3)

See also The Stationery Office's virtual bookshop at:-

<http://www.clicktso.co.uk>

NOTE: Prior to 1997, many of the Transport Statistic's Bulletins were published as HMSO publications. Enquiries about back issues, or transport publications in general, should be made to TSF5, Zone 17, 2nd Floor, Great Minster House, 76 Marsham Street, London SW1P 4DR. Great Britain. ☎ +44 (0)20 7944 4847.

DTLR: Transport Statistics Publications (Transport Statistics Bulletins - free)

Obtainable from:

Department of Transport, Local Government and the Regions

2nd Floor Zone 17

Great Minster House

76 Marsham Street

London

SW1P 4DR

☎ +44 (0)20 7944 4847

Annual Bulletins – produced by Transport Statistics

Concessionary Fares Schemes in England & Wales

National Road Maintenance Condition Survey: 2000

Regional Transport Statistics: 2000

Road Casualties in Great Britain: Main Results: 2000

Road Travel Speeds in English Urban Areas: 1999/2000

Traffic Speeds on English Trunk Roads: 2001

Transport of Goods by Road in Great Britain: 2001

Vehicle Excise Duty Evasion: 2000 Ed.

Vehicle Licensing Statistics: 2001

Vehicle Speeds in Great Britain: 2000

Waterborne Freight in the United Kingdom: 2000

Quarterly Bulletins – produced by Transport Statistics

Bus Quality Indicators (ISSN: 1472 0647) ☎ +44 (0)20 7944 3076

Road Goods Vehicles Travelling to Mainland Europe

(ISSN: 1367-5095) ☎ +44 (0)117 987 8484

Traffic in Great Britain (ISSN: 0269-0993) ☎ +44 (0)20 7944 3095

Quinquennial Bulletins – produced by Transport Statistics

Review of the Collection of 'STATS19' - Personal Injury Road

Accident Data - SB(98)14

Review of the Local Bus Fares Survey - SB(97)17

Review of Annual Inquiry Survey to PSV Operators - SB(97)16

Review of the Continuing Survey of Road Goods Transport
- SB(97)13

Publications no longer produced by Transport Statistics, which have transferred to other Government Departments:

Transport Statistics for London: 1999 Edition (ISBN: 1-85112-327-X)

Journey Times Survey: Inner & Central London: 1999

Traffic Speeds in Central and Outer London: 1996/97

Traffic Speeds in Inner London: 1996/97

(From the dates given, future editions of the above publications produced by
Transport for London - Contact ☎ +44 (0)20 7941 4266 for details)

Bulletin of Rail Statistics (ISSN: 1462-0383)

(From Q2 2000/01 editions of this quarterly bulletin are produced by the
Strategic Rail Authority –

Contact ☎ +44 (0)20 7944 3089 for details)

See also the Transport Statistics web site at:-

<http://www.transtat.dtlr.gov.uk/>