

TSGB 2008: Energy and the Environment - data tables

* To access data tables, select on the table headings or bookmarks.

Consumption and prices

[3.1 Petroleum Consumption: by transport mode and fuel type: United Kingdom: 1997-2007](#)

[3.2 Energy consumption: by transport mode and source of energy: United Kingdom: 1997-2007](#)

[3.3 Petrol and diesel prices and duties per litre: at April: 1998-2008](#)

[3.4 Average fuel consumption by age and type of vehicle and type of fuel: 1995/1997 to 2006](#)

[3.5 Average New Car Fuel Consumption 1997-2007 \(Registration-Weighted: petrol two wheel drive vehicles only\)](#)

Emissions

[3.6 Emissions for road vehicles \(per vehicle kilometre\) in urban conditions](#)

[3.7 Carbon dioxide emissions in the United Kingdom: 1996-2006](#)

[3.8 Pollutant emissions from transport in the United Kingdom: by source: 1996-2006](#)

Aircraft noise

[3.9 Aircraft noise: population affected by noise around airports: 1997-2007](#)

[Source: www.dft.gov.uk/pgr/statistics](http://www.dft.gov.uk/pgr/statistics)

3.1 Petroleum consumption: by transport mode and fuel type: United Kingdom:¹ 1997-2007

	Million tonnes/percentage										
	1997	1998	1999	2000	2001	2002	2003	2004	2005	2006	2007 ²
Road transport:											
Motor spirit											
Cars & Taxis	20.58	20.25	20.36	20.11	19.76	19.73	18.91	18.56	17.86	17.29	16.76
Light goods	1.27	1.20	1.02	0.89	0.78	0.67	0.58	0.51	0.44	0.44	0.42
Motorcycles	0.14	0.14	0.15	0.15	0.15	0.15	0.17	0.15	0.16	0.15	0.14
Diesel											
Cars & Taxis	2.42	2.48	2.76	2.90	3.05	3.37	3.62	3.98	4.31	4.58	4.78
Light goods	3.13	3.36	3.36	3.41	3.66	4.10	4.36	4.63	5.60	5.85	6.11
Heavy goods	7.87	7.78	8.02	8.07	8.12	8.15	8.39	8.61	8.05	8.16	8.53
Buses & Coaches	1.55	1.52	1.36	1.24	1.22	1.30	1.33	1.28	1.47	1.55	1.62
Propane	-	-	0.01	0.02	0.05	0.09	0.10	0.11	0.12	0.13	0.12
All³	36.96	36.73	37.03	36.79	36.78	37.55	37.46	37.84	38.01	38.14	38.47
Railways:											
Gas/diesel oil & fuel oil	0.52	0.55	0.57	0.57	0.60	0.60	0.60	0.63	0.64	0.65	0.63
Burning oil	0.01	0.01	0.01	0.01	0.01	0.01	0.01	0.01	0.01	0.01	0.01
All	0.53	0.56	0.58	0.59	0.61	0.61	0.61	0.64	0.65	0.67	0.64
Water transport:											
Gas/diesel oil	1.04	0.98	0.91	0.91	0.74	0.60	1.09	0.84	0.92	1.19	0.94
Fuel oil	0.13	0.10	0.07	0.04	0.03	0.04	0.05	0.27	0.35	0.50	0.57
All	1.16	1.09	0.98	0.95	0.78	0.65	1.14	1.11	1.27	1.69	1.51
Air:											
All aviation fuels	8.45	9.28	9.98	10.86	10.67	10.57	10.81	11.69	12.55	12.69	12.67
All petroleum used by transport³	47.10	47.65	48.58	49.18	48.84	49.38	50.02	51.28	52.48	53.18	53.29
All petroleum use (energy and non-energy)	79.25	78.44	77.97	77.20	76.41	76.23	77.15	79.07	80.73	79.75	76.94
Transport as a percentage of all energy and non-energy use	59	61	62	64	64	65	65	65	65	67	69

1 There are revisions to some of the earlier data, for details see "Digest of UK Energy Statistics 2008" published by BERR.

☎020-7944 4129

Source - BERR

2 Figures for 2007 for road transport mode are estimated on 2006 ratios.

3 Excludes a small amount of motor spirit and diesel not used by road vehicles.

3.2 Energy consumption: by transport mode and source of energy: United Kingdom:¹ 1997-2007

	Million tonnes of oil equivalent/percentage										
	1997	1998	1999	2000	2001	2002	2003	2004	2005	2006	2007
Road transport											
Petroleum	41.26	41.02	41.40	41.07	41.10	41.94	41.82	42.22	42.39	42.51	42.81
Railways											
Petroleum	0.58	0.61	0.63	0.64	0.66	0.66	0.67	0.70	0.71	0.73	0.70
Water transport											
Petroleum	1.26	1.18	1.07	1.03	0.84	0.70	1.23	1.20	1.37	1.81	1.62
Aviation											
Petroleum	9.32	10.24	11.02	11.98	11.77	11.66	11.94	12.91	13.86	14.00	13.97
All modes											
Electricity ²	0.72	0.73	0.74	0.74	0.76	0.73	0.71	0.73	0.76	0.71	0.71
All energy used by transport	53.14	53.77	54.85	55.46	55.14	55.68	56.37	57.75	59.08	59.75	59.81
All energy used by final users	154.37	155.92	156.53	159.21	160.93	156.48	158.03	159.82	160.19	157.95	154.87
Energy used by transport as a percentage of all energy used by final users	34	34	35	35	34	36	36	36	37	38	39

1 There are revisions to some of the earlier data, for details see "Digest of UK Energy Statistics 2008" published by BERR.

☎020-7944 4129
Source - BERR

2 Includes consumption at transport premises.

3.3 Petrol and diesel prices and duties per litre: at April: 1998-2008

	Pence/percentage										
	April 1998	April 1999	April 2000	April 2001	April 2002	April 2003	April 2004	April 2005	April 2006	April 2007	April 2008
Lead replacement petrol ¹											
Price	72.4	77.8	84.5	78.2	77.8	81.4	81.3	88.5
Duty	49.3	52.9	50.9	46.8	48.8	48.8	47.1	47.1
VAT	10.8	11.6	12.6	11.7	11.6	12.1	12.1	13.2
All tax	60.0	64.5	63.5	58.5	60.4	61.0	59.2	60.3
All tax as a percentage of price	83	83	75	75	78	75	73	68
Unleaded petrol ²											
Price	65.8	70.2	80.0	75.9	75.0	78.2	77.8	85.4	94.1	91.9	107.6
Duty	44.0	47.2	48.8	45.8	45.8	45.8	47.1	47.1	47.1	48.4	50.4
VAT	9.8	10.5	11.9	11.3	11.2	11.7	11.6	12.7	14.0	13.7	16.0
All tax	53.8	57.7	60.7	57.1	57.0	57.5	58.7	59.8	61.1	62.0	66.4
All tax as a percentage of price	82	82	76	75	76	73	75	70	65	67	62
Ultra low sulphur diesel ³											
Price	66.8	73.2	81.1	77.3	76.9	80.9	79.2	89.6	97.6	94.7	116.6
Duty	45.0	50.2	48.8	45.8	45.8	45.8	47.1	47.1	47.1	48.4	50.4
VAT	10.0	10.9	12.1	11.5	11.5	12.0	11.8	13.3	14.5	14.1	17.4
All tax	54.9	61.1	60.9	57.3	57.3	57.9	58.9	60.4	61.6	62.5	67.7
All tax as a percentage of price	82	83	75	74	74	72	74	67	63	66	58

1 Prices prior to 2000 were for four star petrol
Pump prices are broadly the same.

020-7215 6935
Source - BERR

2 From April 2001, Premium unleaded prices represent Ultra Low Sulphur Petrol (ULSP)
Pump prices are broadly the same.

3 Prices prior to 2000 were for diesel engined road vehicle fuel (DERV)
Pump prices are broadly the same.

3.4 Average fuel consumption by age and type of vehicle and type of fuel: 1995/1997 to 2006

a) Passenger cars			Miles per gallon/litres per 100 km				
	1995/1997	1998/2000	2002	2003	2004	2005	2006
Petrol cars							
Up to 2 years	32	30	31	31	32	32	32
Over 2 to 6 years	31	30	31	31	31	31	31
Over 6 to 10 years	30	30	31	31	30	30	30
Over 10 years	29	28	28	29	29	30	29
All petrol cars	31	30	30	30	30	31	31
Diesel cars ¹							
Up to 2 years	43	35	40	40	41	40	39
Over 2 years	44	39	38	38	39	38	39
All diesel cars	44	38	39	39	40	39	39
Company cars ¹	34	30	35	34	36	36	35
Private cars	32	31	31	32	32	32	32
All cars (miles/gallon)	32	31	32	32	32	33	32
All cars (litres/100 km)	8.8	9.1	8.9	8.9	8.8	8.7	8.8
b) HGVs			Miles per gallon				
	1996 ^R	1999 ^R	2002 ^R	2003 ^R	2004 ^R	2005 ^R	2006 ^R
Rigid vehicles	9.9	10.3	9.8	9.5	9.8	10.0	9.7
Articulated vehicles	7.6	8.0	7.8	7.8	8.0	8.2	8.1

1 These estimates have a large sampling error because of the smaller sample sizes involved.

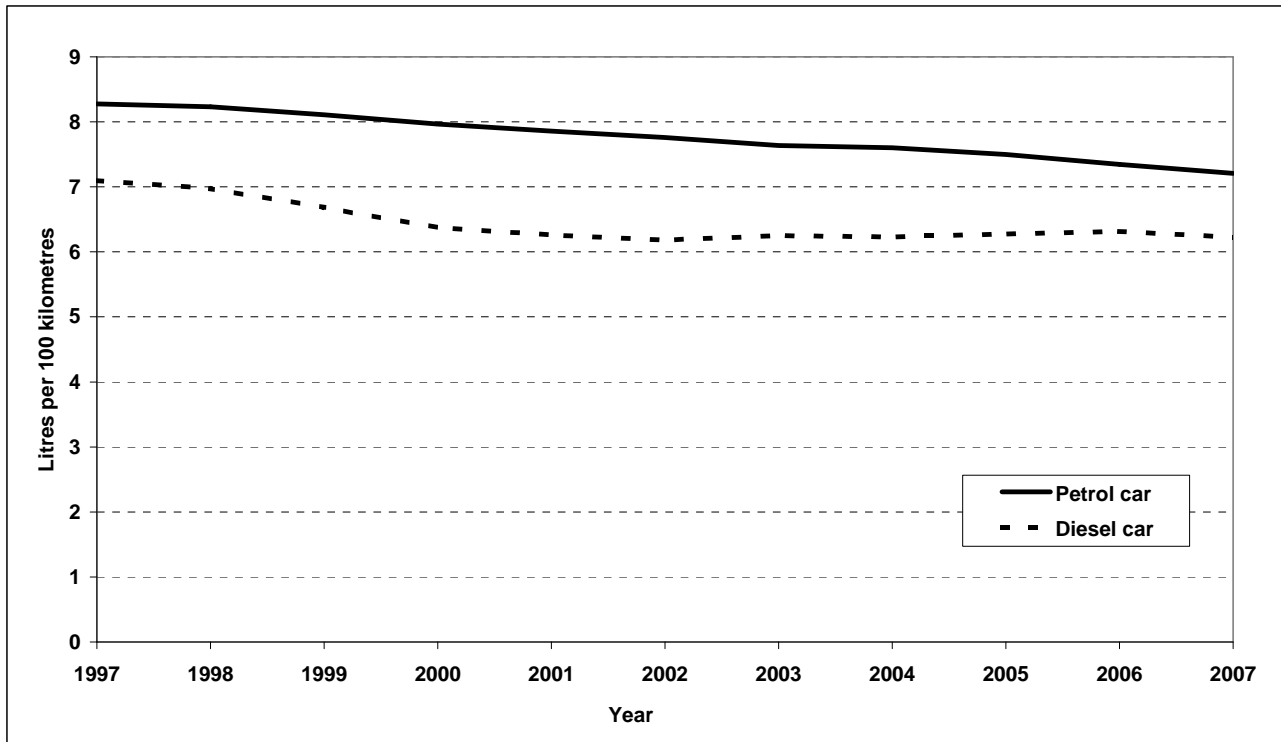
Cars: 020 7944 3097

HGVs: 020 7944 4261

Source - Passenger cars: National Travel Survey

HGVs: Survey of Road Goods Transport

3.5 Average New Car Fuel Consumption: 1997-2007 (Registration-Weighted: petrol and diesel vehicles)



☎020-7944 4129

The figures in this graph are outside the scope of National Statistics
Source - Cleaner Fuels and Vehicles Division, DfT

3.6 Emissions for road vehicles (per vehicle kilometre) in urban conditions

Index: petrol car without three-way catalyst: pre 1993 = 100¹

(a) Road vehicles (per vehicle kilometre) in urban conditions:			Carbon monoxide	Hydrocarbons ²	Oxides of nitrogen	Particulates ³	Carbon dioxide ⁴
Petrol car without three-way catalyst	Pre-Euro I	pre 1993	100	100	100	16	100
Petrol car with three-way catalyst	Euro I	1993-1996	10	2	13	2	98
Petrol car with three-way catalyst	Euro II	1997-2000	7	2	12	-	98
Petrol car with three-way catalyst	Euro III	2001-2005	6	1	5	-	92
Petrol car with three-way catalyst	Euro IV	2006-	5	1	4	-	82
Diesel car	Pre-Euro I	pre 1993	6	10	38	100	97
Diesel car	Euro I	1993-1996	3	5	33	37	95
Diesel car	Euro II	1997-2000	2	4	33	33	93
Diesel car	Euro III	2001-2005	1	3	33	21	83
Diesel car	Euro IV	2006-	1	3	17	11	75
Petrol light goods vehicle without three-way catalyst	Pre-Euro I	pre 1994	136	96	94	19	109
Petrol light goods vehicle with three-way catalyst	Euro I	1994-1997	20	3	19	2	138
Petrol light goods vehicle with three-way catalyst	Euro II	1998-2000	5	2	17	1	146
Petrol light goods vehicle with three-way catalyst	Euro III	2001-2005	4	1	7	1	139
Petrol light goods vehicle with three-way catalyst	Euro IV	2006-	3	1	5	1	128
Diesel light goods vehicle	Pre-Euro I	pre 1994	10	19	81	187	141
Diesel light goods vehicle	Euro I	1994-1997	4	9	63	52	141
Diesel light goods vehicle	Euro II	1998-2001	4	9	60	53	143
Diesel light goods vehicle	Euro III	2002-2005	3	7	45	37	131
Diesel light goods vehicle	Euro IV	2006-	3	4	23	24	122
Heavy goods vehicle - Rigid	Pre-Euro I	pre 1993	25	118	344	277	See table 3.6b
Heavy goods vehicle - Rigid	Euro I	1993-1996	14	43	437	143	
Heavy goods vehicle - Rigid	Euro II	1997-2001	11	34	373	100	
Heavy goods vehicle - Rigid	Euro III	2002-2005	8	23	258	72	
Heavy goods vehicle - Rigid	Euro IV	2006-	6	17	194	16	
Heavy goods vehicle - Artics	Pre-Euro I	pre 1993	29	100	969	407	See table 3.6b
Heavy goods vehicle - Artics	Euro I	1993-1996	40	107	1,159	375	
Heavy goods vehicle - Artics	Euro II	1997-2001	31	88	799	260	
Heavy goods vehicle - Artics	Euro III	2002-2005	21	60	554	187	
Heavy goods vehicle - Artics	Euro IV	2006-	16	44	416	42	
Buses		pre 1993	81	90	840	399	649
Buses		1993-1996	25	67	674	202	537
Buses		1997-2001	21	48	603	132	485
Buses		2002-2005	14	33	418	95	485
Buses		2006-	12	33	292	29	470
Motorcycle (less than 50cc) - two stroke		pre 2000	236	854	2	26	42
Motorcycle (less than 50cc) - two stroke		2000-2005	24	188	1	26	19
Motorcycle (less than 50cc) - two stroke		2006-	24	188	1	26	19
Motorcycle (greater than 50cc) - two stroke		pre 2000	231	662	2	26	52
Motorcycle (greater than 50cc) - two stroke		2000-2005	119	458	2	26	41
Motorcycle (greater than 50cc) - two stroke		2006-	50	174	2	26	41
Motorcycle (greater than 50cc) - four stroke		pre 2000	206	115	9	78	52
Motorcycle (greater than 50cc) - four stroke		2000-2005	69	48	13	78	45
Motorcycle (greater than 50cc) - four stroke		2006-	29	18	13	78	45

(b) Fleet averaged CO₂ emissions for HGVs (per vehicle kilometre) in urban conditions⁵

Year	Rigid	Articulated
1990	407	677
1991	414	675
1992	414	670
1993	435	674
1994	402	635
1995	418	604
1996	410	587
1997	414	573
1998	388	543
1999	397	546
2000	402	537
2001	415	533
2002	400	533
2003	410	538
2004	433	510
2005	400	492
2006	405	493

1 Particulates index is diesel car: pre 1993 =100.

2 Figures based on non-methane hydrocarbons.

3 Legislative standards exist only for diesel vehicles.

4 Legislative standards do not apply to CO₂ emissions, but average factors are available for different legislative vehicle classes based on test cycle data. Better information on HGVs is based on average fuel economy of the HGV fleet each year, see table 3.6b.

5 Based on fleet averaged fuel economy of HGVs using data from DfT survey of road goods transport, corrected for urban driving conditions for comparison with indices in Table 3.6a.

020-7944 4276

The figures in this table are outside the scope of National Statistics

Source - AEA Energy and Environment

3.7 Carbon dioxide emissions in the United Kingdom:¹ 1996-2006

	1996	1997	1998	1999	2000	2001	2002	2003	2004	2005	2006	Per cent of total in 2006
Million tonnes of carbon dioxide/percentage												
(a) By IPCC source category (NAEI)²												
Transport:												
Road transport	115.2	116.6	115.9	116.8	116.0	116.0	118.4	118.2	119.4	119.9	120.3	21.7
Passenger cars	71.8	72.2	71.3	72.6	72.2	71.6	72.5	70.8	70.8	69.6	68.7	12.4
Light duty vehicles	13.4	13.9	14.4	13.8	13.6	14.0	15.1	15.6	16.3	19.1	19.9	3.6
Buses	5.1	4.9	4.8	4.3	3.9	3.8	4.1	4.2	4.0	4.6	4.9	0.9
HGVs	24.3	24.9	24.6	25.4	25.6	25.7	25.8	26.6	27.2	25.5	25.8	4.7
Mopeds & motorcycles	0.4	0.4	0.4	0.5	0.5	0.5	0.5	0.5	0.5	0.5	0.5	0.1
LPG emissions (all vehicles)	0.0	0.0	0.0	0.0	0.1	0.2	0.3	0.3	0.3	0.4	0.4	0.1
Other (road vehicle engines)	0.2	0.2	0.2	0.2	0.2	0.2	0.2	0.2	0.2	0.2	0.2	-
Other transport	7.3	7.3	7.3	7.2	7.2	6.9	6.5	8.2	8.4	9.2	10.5	1.9
Civil aviation	1.4	1.4	1.5	1.7	1.9	2.0	2.0	2.1	2.2	2.4	2.3	0.4
Railways ³	1.7	1.7	1.8	1.8	1.8	1.9	1.9	2.0	2.1	2.1	2.2	0.4
National navigation	4.0	3.8	3.6	3.2	3.1	2.6	2.2	3.7	3.7	4.2	5.5	1.0
Other mobile sources and machinery	0.3	0.3	0.4	0.4	0.4	0.4	0.4	0.4	0.4	0.4	0.5	0.1
Total domestic transport	122.5	123.9	123.2	123.9	123.2	122.9	124.9	126.3	127.7	129.0	130.8	23.6
Net emissions all sources	571.0	548.1	549.9	540.3	548.6	559.4	542.7	554.7	555.1	555.2	554.5	100.0
Memo items ⁴												
International bunkers - Aviation	21.4	22.8	25.3	27.5	30.3	29.6	29.0	29.7	32.5	35.1	35.6	.
International bunkers - Navigation	7.3	8.2	9.0	6.5	5.7	6.4	5.3	5.1	5.9	5.9	6.8	.
(b) By National Communication source category (NAEI)²												
Transport:												
Road	115.2	116.6	115.9	116.8	116.0	116.0	118.4	118.2	119.4	119.9	120.3	21.7
Aviation	1.4	1.4	1.5	1.7	1.9	2.0	2.0	2.1	2.2	2.4	2.3	0.4
Railways ³	1.7	1.7	1.8	1.8	1.8	1.9	1.9	2.0	2.1	2.1	2.2	0.4
Railways - stationary combustion	0.5	0.5	0.5	0.5	0.4	0.5	0.4	0.1	0.04	0.04	0.04	-
Shipping	4.0	3.8	3.6	3.2	3.1	2.6	2.2	3.7	3.7	4.2	5.5	1.0
Aircraft support vehicles	0.3	0.3	0.4	0.4	0.4	0.4	0.4	0.4	0.4	0.4	0.5	0.1
Military aircraft and shipping	3.8	3.6	3.2	3.1	2.9	2.9	3.1	2.8	2.9	2.8	2.7	0.5
Transport Total	126.8	128.1	126.9	127.6	126.6	126.2	128.4	129.2	130.7	131.9	133.5	24.1
Net emissions all sources	571.0	548.1	549.9	540.3	548.6	559.4	542.7	554.7	555.1	555.2	554.5	100.0
(c) By National Communication end user category (NAEI)⁵												
Transport:												
Road	133.1	134.2	133.4	134.2	133.3	133.4	137.4	136.5	136.2	137.0	135.0	24.3
Aviation	1.6	1.6	1.8	2.0	2.2	2.3	2.3	2.4	2.5	2.7	2.6	0.5
Railways ³	3.4	3.4	3.5	3.4	3.5	3.6	3.7	3.7	3.8	3.9	4.1	0.7
Railways - stationary combustion	0.6	0.5	0.5	0.5	0.5	0.5	0.4	0.1	0.05	0.05	0.05	-
Shipping	4.5	4.4	4.1	3.7	3.6	3.0	2.5	4.3	4.2	4.7	6.1	1.1
Aircraft support vehicles	0.4	0.4	0.4	0.4	0.4	0.4	0.4	0.5	0.5	0.5	0.5	0.1
Military aircraft and shipping	4.4	4.2	3.7	3.6	3.3	3.4	3.5	3.2	3.3	3.2	3.1	0.6
Transport Total	148.0	148.7	147.3	147.8	146.7	146.5	150.2	150.6	150.5	152.2	151.5	27.3
Net emissions all end users	571.0	548.1	549.9	540.3	548.6	559.4	542.7	554.7	555.1	555.2	554.5	100.0
(d) By industry code (Environmental Accounts)⁶												
Transport industries:												
Railways	1.7	1.8	1.9	1.9	1.9	2.0	2.0	2.0	2.1	2.2	2.2	0.4
Buses and coaches	5.7	5.5	5.5	5.0	4.6	4.3	4.8	4.8	4.7	5.3	5.5	0.9
Tubes and trams	0.6	0.5	0.6	0.5	0.5	0.5	0.4	0.1	0.1	0.1	0.1	-
Taxis operation	1.9	2.0	2.1	2.1	2.2	2.2	2.2	2.2	2.2	2.3	2.3	0.4
Freight transport by road	18.4	18.9	19.3	19.6	19.7	20.3	19.5	20.3	19.7	18.7	18.8	3.0
Transport via pipeline	0.1	0.1	0.1	0.1	0.1	0.1	0.1	0.1	0.1	0.1	0.1	-
Water transport	19.9	19.6	19.4	16.5	16.0	20.4	22.1	23.6	27.2	27.1	19.2	3.1
Air transport	26.2	27.8	31.1	33.5	37.0	36.5	35.8	37.0	39.2	42.4	43.2	6.9
All transport industries	74.6	76.2	79.8	79.3	82.0	86.3	86.8	90.1	95.3	98.0	91.4	14.6
Household use of private vehicles	59.8	60.7	60.2	61.3	60.9	61.7	63.6	62.8	63.1	62.4	61.8	9.9
Total emissions all sectors	620.5	600.3	606.2	597.4	608.8	624.3	609.3	624.4	631.7	634.4	626.3	100.0

1 Data are presented as the weight of carbon dioxide emitted.

UK national emission estimates are updated annually and any developments in methodology are applied retrospectively to earlier years.

2 Source categories relate directly to the vehicle or other piece of equipment producing the emission. See Notes and Definitions for further details.

3 Railway emissions in the NAEI are those from diesel trains only.

4 Categories not included in the national total that is reported to the UNFCCC.

5 End user emissions now follow the 'IPCC Nomenclature for reporting' categories. End user emissions for transport include a share of the emissions from combustion of fossil fuels at power stations and other fuel processing industries. See Notes and Definitions for further details.

6 The economic sectors are based on similar concepts and classifications of industries to those used in the National Accounts. See Notes and Definitions for further details.

3.8 Pollutant emissions from transport in the United Kingdom (by source):¹ 1996-2006

	1996	1997	1998	1999	2000	2001	2002	2003	2004	2005	2006	Per cent of total in 2006
Thousand tonnes/percentage												
(a) Carbon monoxide (CO)												
Transport:												
Road transport	3,999	3,664	3,337	3,003	2,500	2,127	1,852	1,593	1,365	1,124	984	43.4
Passenger cars	3,353	3,065	2,785	2,526	2,108	1,802	1,584	1,360	1,169	951	830	36.6
Light duty vehicles	445	400	359	283	218	166	121	89	69	54	48	2.1
Buses	41	35	29	23	18	13	11	9	7	7	6	0.3
HGVs	70	68	66	64	60	57	53	50	48	44	42	1.9
Mopeds & motorcycles	90	95	99	108	96	90	84	85	72	68	58	2.6
Other transport	55	60	61	67	74	79	68	68	74	79	77	3.4
Civil aviation	34	39	39	46	53	59	50	46	53	56	51	2.2
Railways	11	11	12	12	13	13	12	11	12	12	12	0.5
National navigation	9	9	8	7	7	6	5	8	8	9	13	0.6
Other mobile sources ²	1.3	1.3	1.4	1.5	1.5	1.5	1.5	1.6	1.6	1.7	1.8	0.1
All domestic transport	4,055	3,724	3,398	3,070	2,574	2,206	1,921	1,660	1,439	1,203	1,061	46.8
Total	6,151	5,678	5,273	4,926	4,230	3,880	3,338	2,932	2,689	2,388	2,268	100.0
Memo items ³												
International bunkers - Aviation	15	15	17	18	19	18	17	18	19	20	20	.
International bunkers - Navigation	17	19	21	15	13	15	12	12	14	13	16	.
(b) Nitrogen oxides (NO_x)												
Transport:												
Road transport	1,068	1,014	960	900	818	749	692	636	596	549	515	32.3
Passenger cars	596	550	502	458	397	347	310	273	245	215	195	12.2
Light duty vehicles	70	70	70	67	65	64	60	59	59	58	54	3.4
Buses	59	57	55	52	48	45	43	42	38	36	36	2.3
HGVs	342	336	332	322	307	292	277	261	253	238	228	14.3
Mopeds & motorcycles	0.7	0.8	0.8	0.9	0.9	1.0	1.1	1.2	1.2	1.3	1.2	0.1
Other transport	125	124	122	119	122	111	96	129	129	143	174	10.9
Civil aviation	4.5	4.7	5.2	6.0	6.8	7.0	6.9	7.2	7.9	8.8	8.8	0.6
Railways	27	30	32	35	40	42	36	34	36	37	38	2.4
National navigation	87	84	79	71	69	56	47	82	80	92	122	7.7
Other mobile sources ²	5.5	5.8	6.1	6.2	6.3	6.0	5.8	5.7	5.6	5.6	5.2	0.3
All domestic transport	1,193	1,138	1,082	1,019	939	860	787	764	726	692	689	43.2
Total	2,315	2,163	2,089	1,976	1,899	1,828	1,715	1,721	1,659	1,620	1,595	100.0
Memo items ³												
International bunkers - Aviation	99	106	117	125	137	133	129	132	145	156	159	.
International bunkers - Navigation	167	187	203	147	129	145	121	116	132	132	153	.
(c) Particulates (PM₁₀)												
Transport:												
Road transport	51.3	47.5	45.2	43.3	38.6	37.7	36.9	36.2	35.4	33.7	32.3	21.3
Passenger cars	13.6	12.8	11.6	10.6	8.3	8.0	7.7	7.3	6.9	6.4	6.0	4.0
Light duty vehicles	9.9	10.1	10.5	11.0	10.3	10.8	11.0	11.3	11.3	10.8	10.2	6.7
Buses	4.7	3.6	2.9	2.2	1.7	1.3	1.1	1.0	0.8	0.7	0.7	0.5
HGVs	14.3	12.0	11.2	10.2	9.0	8.1	7.4	6.8	6.4	5.7	5.3	3.5
Mopeds & motorcycles	0.4	0.4	0.4	0.5	0.5	0.5	0.5	0.6	0.6	0.6	0.6	0.4
Automobile tyre & brake wear	8.3	8.5	8.6	8.8	8.8	8.9	9.1	9.2	9.4	9.4	9.5	6.3
Other transport	6.4	6.2	5.9	5.4	5.1	4.5	3.9	5.6	6.4	7.4	9.6	6.3
Civil aviation	0.1	0.1	0.1	0.1	0.1	0.1	0.1	0.1	0.1	0.1	0.1	0.1
Railways	0.7	0.7	0.8	0.8	0.8	0.9	0.7	0.6	0.6	0.7	0.7	0.4
National navigation	5.2	4.8	4.4	3.9	3.7	3.0	2.6	4.4	5.2	6.2	8.3	5.5
Other mobile sources ²	0.5	0.5	0.6	0.6	0.6	0.5	0.5	0.5	0.5	0.5	0.5	0.3
All domestic transport	57.7	53.6	51.1	48.7	43.7	42.2	40.8	41.8	41.9	41.1	41.9	27.6
Total	233	224	209	197	184	177	155	154	153	150	152	100.0
Memo items ³												
International bunkers - Aviation	1.3	1.4	1.6	1.7	1.9	1.8	1.8	1.8	2.0	2.2	2.2	.
International bunkers - Navigation	14.5	17.0	17.3	12.4	10.5	10.9	9.3	9.5	10.9	11.5	13.2	.
Road transport resuspension ⁴	18.2	18.6	19.0	19.3	19.4	19.7	20.2	20.3	20.7	20.7	21.0	.
(d) Benzene												
Transport:												
Road transport ⁵	25.7	22.8	19.8	17.0	5.6	5.2	4.6	4.0	3.4	2.9	2.6	18.0
Passenger cars	21.7	19.1	16.5	14.1	4.8	4.4	3.9	3.4	2.9	2.4	2.2	15.2
Light duty vehicles	1.6	1.4	1.3	1.0	0.3	0.3	0.2	0.2	0.2	0.2	0.2	1.1
Buses	-	-	-	-	-	-	-	-	-	-	-	-
HGVs	-	-	-	-	-	-	-	-	-	-	-	0.1
Mopeds & motorcycles	0.9	0.9	0.9	1.0	0.2	0.3	0.3	0.3	0.2	0.2	0.2	1.2
Gasoline evaporation	1.4	1.3	1.1	0.9	0.2	0.2	0.1	0.1	0.1	0.1	0.1	0.4
Other transport	0.9	0.9	0.9	0.9	0.9	0.8	0.7	0.9	1.0	1.1	1.2	8.6
Civil aviation	-	-	-	-	-	-	-	-	-	-	-	0.2
Railways	0.4	0.4	0.4	0.4	0.4	0.5	0.4	0.4	0.5	0.5	0.5	3.6
National navigation	0.5	0.5	0.4	0.4	0.4	0.3	0.3	0.5	0.5	0.5	0.7	4.8
Other mobile sources ²	-	-	-	-	-	-	-	-	-	-	-	0.1
All domestic transport	26.6	23.7	20.7	17.8	6.4	6.0	5.3	4.9	4.4	4.0	3.8	26.6
Total	41.2	38.0	34.2	30.9	18.4	17.5	16.2	15.6	15.2	14.5	14.4	100.0
Memo items ³												
International bunkers - Aviation	0.1	0.1	0.1	0.1	0.1	0.1	0.1	0.1	0.1	0.1	0.1	.
International bunkers - Navigation	0.9	1.1	1.2	0.8	0.7	0.8	0.7	0.7	0.8	0.7	0.9	.

3.8 (Continued) Pollutant emissions from transport in the United Kingdom (by source):¹ 1996-2006

	1996	1997	1998	1999	2000	2001	2002	2003	2004	2005	2006	Per cent of total in 2006
Thousand tonnes/percentage												
(e) 1,3-butadiene												
Transport:												
Road transport	6.7	5.9	5.2	4.5	3.8	3.2	2.7	2.2	1.9	1.6	1.4	55.4
Passenger cars	4.4	3.9	3.3	2.8	2.3	1.9	1.5	1.2	0.9	0.7	0.6	22.3
Light duty vehicles	0.4	0.3	0.3	0.2	0.2	0.2	0.1	0.1	0.1	0.1	0.1	2.9
Buses	0.4	0.3	0.3	0.2	0.2	0.1	0.1	0.1	0.1	0.1	0.1	2.9
HGVs	1.3	1.2	1.1	1.0	0.9	0.8	0.8	0.7	0.7	0.6	0.6	22.8
Mopeds & motorcycles	0.2	0.2	0.2	0.2	0.2	0.2	0.2	0.2	0.1	0.1	0.1	4.5
Other transport	0.2	0.2	0.2	0.2	0.2	0.2	0.2	0.2	0.2	0.2	0.2	8.8
Civil aviation	-	-	-	-	-	-	-	-	-	-	-	0.9
Railways	0.1	0.2	0.2	0.2	0.2	0.2	0.2	0.2	0.2	0.2	0.2	7.6
National navigation	0.0	0.0	0.0	0.0	0.0	0.0	0.0	0.0	0.0	0.0	0.0	0.0
Other mobile sources ²	-	-	-	-	-	-	-	-	-	-	-	0.3
All domestic transport	6.9	6.1	5.4	4.7	4.0	3.4	2.9	2.4	2.1	1.8	1.6	64.2
Total	8.2	7.3	6.5	5.9	5.1	4.4	3.8	3.4	3.0	2.7	2.5	100.0
Memo items ³												
International bunkers - Aviation	0.1	0.1	0.1	0.1	0.1	0.1	0.1	0.1	0.1	0.1	0.1	.
International bunkers - Navigation	0.0	0.0	0.0	0.0	0.0	0.0	0.0	0.0	0.0	0.0	0.0	.
Tonnes/percentage												
(f) Lead (Pb)												
Transport:												
Road transport ⁶	892	782	573	301	2.2	2.0	2.0	2.0	2.0	2.1	2.1	1.9
Passenger cars	831	731	537	284	1.5	1.3	1.2	1.2	1.2	1.3	1.3	1.2
Light duty vehicles	55.5	45.4	31.9	14.4	0.2	0.2	0.2	0.2	0.3	0.3	0.3	0.3
Buses	0.1	0.1	0.1	0.1	0.1	0.1	0.1	0.1	0.1	0.1	0.1	0.1
HGVs	0.4	0.4	0.4	0.4	0.4	0.4	0.4	0.4	0.4	0.4	0.4	0.4
Mopeds & motorcycles	5.2	4.8	3.6	2.1	-	-	-	-	-	-	-	-
Other transport	0.5	0.5	0.5	0.5	0.5	0.4	0.4	0.5	0.6	0.7	0.8	0.8
Civil aviation	-	-	-	-	-	-	-	-	-	-	-	-
Railways	0.1	0.1	0.1	0.1	0.1	0.2	0.2	0.2	0.2	0.2	0.2	0.2
National navigation	0.4	0.3	0.3	0.3	0.3	0.2	0.2	0.3	0.4	0.4	0.6	0.5
Other mobile sources ²	-	-	-	-	-	-	-	-	-	-	-	-
All domestic transport	893	782	574	302	2.6	2.4	2.4	2.5	2.6	2.7	2.9	2.7
Total	1,316	1,153	849	493	163	155	142	129	134	117	106	100.0
Memo items ³												
International bunkers - Aviation	0.4	0.4	0.4	0.5	0.5	0.5	0.5	0.5	0.6	0.6	0.6	.
International bunkers - Navigation	1.0	1.2	1.2	0.9	0.7	0.7	0.6	0.7	0.8	0.8	0.9	.
Thousand tonnes/percentage												
(g) Sulphur dioxide (SO₂)												
Transport:												
Road transport	38.3	28.3	23.3	14.3	6.7	4.2	3.8	3.8	3.5	3.0	2.7	0.4
Passenger cars	15.7	17.3	12.6	11.9	5.4	3.0	2.6	2.6	2.4	2.1	2.0	0.3
Light duty vehicles	5.9	3.4	3.4	1.0	0.5	0.4	0.4	0.4	0.4	0.4	0.3	-
Buses	2.9	1.1	0.7	0.1	0.1	0.1	0.1	0.1	0.1	0.1	0.1	-
HGVs	13.8	6.4	6.5	1.1	0.6	0.6	0.7	0.7	0.6	0.5	0.4	0.1
Mopeds & motorcycles	0.1	0.1	0.1	0.1	-	-	-	-	-	-	-	-
Other transport	31.8	29.7	27.6	24.4	22.6	19.0	16.9	27.2	34.0	40.1	53.3	7.9
Civil aviation	0.3	0.5	0.5	0.4	0.4	0.5	0.4	0.5	0.6	0.6	0.7	0.1
Railways	1.5	1.5	1.6	1.6	1.5	1.4	1.7	1.9	1.9	1.9	2.0	0.3
National navigation	29.7	27.4	25.1	22.1	20.3	16.8	14.5	24.4	31.1	37.2	50.2	7.4
Other mobile sources ²	0.3	0.3	0.3	0.3	0.3	0.3	0.3	0.4	0.4	0.4	0.4	0.1
All domestic transport	70.1	58.0	50.8	38.7	29.2	23.2	20.7	30.9	37.5	43.2	56.1	8.3
Total	2,003	1,661	1,633	1,209	1,198	1,095	978	967	812	688	676	100.0
Memo items ³												
International bunkers - Aviation	5.4	7.2	8.1	6.1	6.9	7.5	6.1	7.2	8.5	9.1	11.0	.
International bunkers - Navigation	93.9	110.7	111.2	79.1	66.3	67.3	58.3	60.2	69.6	74.6	85.3	.

1 UK national emission estimates are updated annually and any developments in methodology are applied retrospectively to earlier years

☎020-7944 4276
Source - AEA Energy & Environment/Defra

2 Includes machinery.

3 Categories not included in the national total that is reported to UNECE

4 Resuspension of particles caused by the turbulence of passing vehicles. Not included in totals for PM₁₀ to avoid double-counting, but is important in reconciling roadside concentration measurements

5 Reduction in road transport benzene emissions in 2000 mainly due to reduction in benzene content of petrol

6 Reduction in road transport lead emissions in 2000 is mainly due to a ban on the general sale of leaded petrol

3.9 Aircraft noise: population affected by noise around airports: 1997-2007

	1997	1998	1999	2000	2001	2002	2003	2004	2005	2006	2007
(a) Heathrow											
Air transport movements (thousands)	429.2	441.2	449.5	459.7	457.6	460.3	457.1	469.8	472.0	470.9	475.79
Area (sq kms) within:											
57 Leq contour	158.3	163.7	155.6	135.6	117.4	126.9	126.9	117.4	117.2	117.4	119.6
63 Leq contour	53.8	55.4	53.9	48.2	41.2	43.8	43.8	40.3	39.1	38.4	37.6
69 Leq contour	23.2	22.8	21.9	19.0	14.1	16.4	15.6	13.3	12.4	11.9	12.2
Population (thousands) within:											
57 Leq contour	300.0	341.0	331.6	275.2	240.4	258.3	263.7	239.7	251.7	258.0	251.9
63 Leq contour	84.2	82.2	91.2	71.9	54.9	64.2	64.6	55.9	51.8	51.2	45.1
69 Leq contour	13.8	15.5	13.8	11.5	6.8	8.6	8.0	5.7	3.9	3.6	3.7
(b) Gatwick											
Air transport movements (thousands)	227.3	240.2	244.7	251.2	244.0	233.6	234.5	241.2	252.0	254.4	258.9
Area (sq kms) within:											
57 Leq contour	85.9	76.8	71.4	71.9	55.9	45.2	46.1	48.0	49.3	46.7	49.0
63 Leq contour	30.4	28.2	26.4	26.4	19.6	15.8	16.5	16.7	16.9	15.6	16.3
69 Leq contour	10.3	9.7	8.9	9.0	6.0	4.6	4.8	4.8	5.1	4.6	4.9
Population (thousands) within:											
57 Leq contour	12.6	9.0	7.8	8.7	5.2	3.5	4.2	4.5	4.7	4.5	4.8
63 Leq contour	2.0	1.4	1.4	1.4	0.8	0.5	0.6	0.6	0.7	0.6	0.6
69 Leq contour	0.4	0.3	0.3	0.2	0.1	0.1	0.1	0.1	0.1	-	-
(c) Stansted											
Air transport movements (thousands)	82.2	102.2	132.3	143.6	150.6	152.4	169.2	176.8	178.0	190.0	191.5
Area (sq kms) within:											
57 Leq contour	52.1	64.5	52.3	52.4	32.1	31.7	33.3	29.9	27.4	29.3	30.8
63 Leq contour	17.7	22.3	20.5	20.4	11.6	11.3	11.7	9.9	8.7	8.6	8.9
69 Leq contour	6.6	8.7	7.9	7.6	3.6	3.4	3.5	2.8	2.4	2.3	2.5
Population (thousands) within:											
57 Leq contour	6.0	7.6	4.4	5.7	2.3	2.0	2.3	2.9	2.0	2.0	2.5
63 Leq contour	0.9	1.3	1.4	1.3	0.4	0.3	0.5	0.3	0.3	0.3	0.3
69 Leq contour	0.2	0.3	0.2	0.2	0.1	0.1	-	-	-	-	-
(d) Manchester											
Air transport movements (thousands)	145.7	161.8	169.3	177.6	182.1	177.5	191.5	208.5	218.0	213.0	206.5
Area (sq kms) within:											
57 Leq contour	51.6	53.5	48.5	46.4	43.4	40.3	39.1	39.6	40.2	37.7	37.5
63 Leq contour	17.2	16.9	17.6	15.8	14.6	12.8	13.3	13.7	14.3	13.0	12.4
69 Leq contour	6.5	6.1	5.9	5.0	4.8	4.2	4.4	4.6	4.8	4.6	4.4
Population (thousands) within:											
57 Leq contour	45.6	44.7	53.5	48.4	44.9	38.7	40.6	40.9	41.6	39.2	36.8
63 Leq contour	9.5	10.1	11.9	9.4	6.4	4.5	5.8	5.1	5.6	4.0	3.5
69 Leq contour	2.4	2.0	1.9	1.2	0.5	0.5	0.6	0.6	0.6	0.2	0.1
(e) Birmingham											
Air transport movements (thousands)	79.8	88.2	98.4	108.4	111.0	112.3	116.0	109.2	113.0	108.7	104.5
Area (sq kms) within:											
57 Leq contour	..	35.3	..	19.0	..	14.8	..	16.2	..	16.8	..
63 Leq contour	..	12.3	..	6.2	..	4.4	..	5.1	..	5.2	..
69 Leq contour	..	4.5	..	1.7	..	1.2	..	1.3	..	1.4	..
Population (thousands) within:											
57 Leq contour	..	65.6	..	33.7	..	23.7	..	26.2	..	26.8	..
63 Leq contour	..	16.5	..	5.5	..	2.6	..	3.8	..	3.6	..
69 Leq contour	..	2.5	..	0.1	..	-	..	-	..	-	..
(f) Luton											
Air transport movements (thousands)	36.9	43.6	50.8	55.5	56.0	55.0	58.4	64.2	75.4	78.8	83.3
Area (sq kms) within:											
57 Leq contour	17.8	15.8	19.6	17.6	10.6	10.9	12.2	12.8	13.5	14.9	15.4
63 Leq contour	6.9	5.5	7.3	6.6	3.5	3.6	4.0	4.2	4.2	4.8	5.1
69 Leq contour	2.5	2.0	2.5	2.4	1.2	1.2	1.3	1.3	1.3	1.5	1.6
Population (thousands) within:											
57 Leq contour	5.5	5.8	7.4	8.1	2.3	2.4	3.2	3.8	2.6	3.0	4.4
63 Leq contour	1.2	1.1	1.2	1.7	-	0.1	0.1	0.1	0.1	0.1	0.1
69 Leq contour	0.0	0.0	0.0	0.0	0.0	0.0	0.0	0.0	0.0	0.0	0.0

☎020-7944 4276

The figures in this table are outside the scope of National Statistics

Source - Noise contour data: Major UK airports
Air transport movements: Civil Aviation Authority