

STATISTICS PRESS NOTICE – MID-YEAR POPULATION ESTIMATES NORTHERN IRELAND (2006)



Northern Ireland population rises to just under 1.75 million

9:30am – Tuesday 31 July 2007

Between mid-2005 and mid-2006 the number of people living in Northern Ireland is estimated to have increased by 17,000 people (1.0%) the Northern Ireland Statistics and Research Agency said today. The size of the resident population in Northern Ireland at 30 June 2006 is estimated to be 1.742 million people.

The increase in the population between 2005 and 2006 was a result of the following factors:

- a natural change of 8,300 people (22,700 births and 14,400 deaths);
- estimated net migration into Northern Ireland from Great Britain of 900 people; and
- estimated net international migration into Northern Ireland from outside the UK of 9,000 people.

Population growth due to migration (+9,900 people) was the highest ever observed and for the first time was larger than natural growth (+8,300 people). In the decade to 2004 the annual rate of population increase was around 7,000 persons (0.4%) each year. The 2005 and 2006 increases in population are significantly larger at 14,000 people (0.8%) and 17,000 people (1.0%) respectively. A NISRA spokesperson said:

“Between 2005 and 2006 it is estimated Northern Ireland’s population grew by over 17,000 people. Northern Ireland has seen significant migration since European Union expansion in May 2004 and last year for the first time migration contributed more to population growth than natural change.”

Some further key results and a number of attached tables are outlined below.

Age Structure

- between 2005 and 2006 the number of children¹ has declined by 0.3% (from 381,200 to 380,100). In the ten-year period between 1996 and 2006 the number of children has fallen from 415,100 to 380,100 a fall of 8.4%. This fall reflects the declining birth rate in the 1990s;
- between 2005 and 2006 the working age² population has increased by 1.3% (from 1,063,600 to 1,077,400). In the ten-year period between 1996 and 2006 the working age population has increased from 993,200 to 1,077,400 a rise of 8.5%; and
- between 2005 and 2006 the pensioner³ population has increased by 1.6% (from 279,600 to 284,100). In the ten-year period between 1996 and 2006 the pensioner population has increased from 253,400 to 284,100 a rise of 12.1%.

Local Government Districts (change in population size)

- between 2005 and 2006, Dungannon and Craigavon Local Government Districts had the greatest increases in population (+3.1% and +2.5% respectively). These rates of increase are more than twice the Northern Ireland percentage increase (+1.0%);
- last year the majority of Local Government Districts increased in population size. In addition to Dungannon and Craigavon, Antrim (+1.9%) Armagh (+1.9%), Ballymoney (+1.7%), Banbridge (+1.6%), Cookstown (+2.0%), and Newry and Mourne (+2.0%), experienced population growth of over 1.5%;
- between 2005 and 2006 Belfast Local Government District (-0.2%) experienced a fall in population. Although Belfast Local Government District experienced a gain from international migration (+900 people), the overall fall was due to residents of Belfast moving to other parts of Northern Ireland (-2,100);
- all Local Government Districts in Northern Ireland experienced a natural increase in population (births less deaths). The largest natural increase of population was in Derry and Newry and Mourne Local Government Districts, each with natural increases of more than 700 people.

Local Government Districts (age structure)

- in 2006, Newry and Mourne Local Government District had the highest proportion of children among its population (24.8%), while North Down had the lowest proportion (18.7%);

¹ Children are defined as those in the population aged under 16.

² Working age population is defined as men aged 16-64 and women aged 16-59.

³ Pensioners are defined as the female population aged 60 and over and the male population aged 65 and over.

- North Down Local Government District had the highest proportion of the population of pensionable age (20.0%) and Derry had the lowest proportion (12.9%).

Parliamentary Constituencies

- Fermanagh and South Tyrone had the greatest proportionate increase in population of the Parliamentary Constituencies (+2.3%), whilst only two Parliamentary Constituencies showed a decrease in population between 2005 and 2006 – Belfast South (-0.6%) and Belfast West (-0.4%);
- in Belfast East Parliamentary Constituency the number of deaths was marginally greater than the number of births. In all other Parliamentary Constituencies the number of births exceeded the number of deaths;
- Belfast West Parliamentary Constituency had the highest proportion of children among its population (24.8%), while Belfast South had the lowest proportion (16.4%);
- Belfast East Parliamentary Constituency had the highest proportion of the population of pensionable age (21.6%) while Foyle Parliamentary Constituency had the lowest proportion (12.9%).

The following tables⁴ and figures are attached:

Table 1: Northern Ireland mid-year population estimates, by gender and 5-year age bands, 2006.

Table 2: Components of population change, Northern Ireland, 1995 to 2006.

Figure 1: Components of population change (1995/6 to 2005/6).

Table 3: Components of population change, by area, 2005 to 2006.

Table 4: Detailed migration, by area, 2005 to 2006.

Table 5: Local population estimates for selected age groups, by area, 2006.

NISRA
July 2007

⁴ All count figures in tables have been rounded to nearest 100. Therefore counts may not add to totals due to rounding.

Table 1 Northern Ireland mid-year population estimates, by gender and 5 year age bands, 2006

Age Group	Males	Females	Persons
0-4	57,400	54,700	112,100
5-9	60,300	56,900	117,200
10-14	63,900	60,700	124,600
15-19	67,100	63,500	130,600
20-24	65,100	62,000	127,100
25-29	55,800	56,100	111,900
30-34	57,600	59,100	116,700
35-39	63,400	65,700	129,100
40-44	63,400	66,200	129,600
45-49	57,400	60,000	117,400
50-54	51,300	50,700	102,100
55-59	47,600	49,400	96,900
60-64	42,200	44,700	87,000
65-69	33,300	36,800	70,100
70-74	26,900	32,500	59,400
75-79	20,100	28,700	48,700
80-84	12,800	22,000	34,800
85-89	5,900	12,000	17,900
90+	2,000	6,400	8,400
All Ages	853,400	888,200	1,741,600

Table 2 Components of population change, Northern Ireland, 1995 to 2006

Year	Population at start of period	Births ¹	Deaths ¹	Natural Change	Migration	Other Changes ²	Population at end of period	Population Change	
								Number	%
Mid 1995 to Mid 1996	1,649,100	23,600	15,200	8,400	4,700	-500	1,661,800	12,600	0.8
Mid 1996 to Mid 1997	1,661,800	24,600	15,000	9,600	-1,000	1,000	1,671,300	9,500	0.6
Mid 1997 to Mid 1998	1,671,300	23,800	15,100	8,700	-1,800	-400	1,677,800	6,500	0.4
Mid 1998 to Mid 1999	1,677,800	23,400	15,500	7,900	-4,800	-1,900	1,679,000	1,200	0.1
Mid 1999 to Mid 2000	1,679,000	22,300	15,500	6,800	-2,200	-600	1,682,900	3,900	0.2
Mid 2000 to Mid 2001	1,682,900	21,600	14,300	7,200	-1,900	1,000	1,689,300	6,400	0.4
Mid 2001 to Mid 2002	1,689,300	21,500	14,200	7,200	100	0	1,696,600	7,300	0.4
Mid 2002 to Mid 2003	1,696,600	21,500	14,500	7,000	-1,000	0	1,702,600	6,000	0.4
Mid 2003 to Mid 2004	1,702,600	22,000	14,600	7,400	800	-600	1,710,300	7,700	0.5
Mid 2004 to Mid 2005	1,710,300	22,400	14,400	8,000	6,700	-600	1,724,400	14,100	0.8
Mid 2005 to Mid 2006	1,724,400	22,700	14,400	8,300	9,900	-1,000	1,741,600	17,200	1.0

¹ Mid year to mid year.

² Other changes principally relates to changes in Her Majesty's Forces stationed in Northern Ireland.

Figure 1 Components of population change (1995/6 to 2005/6)

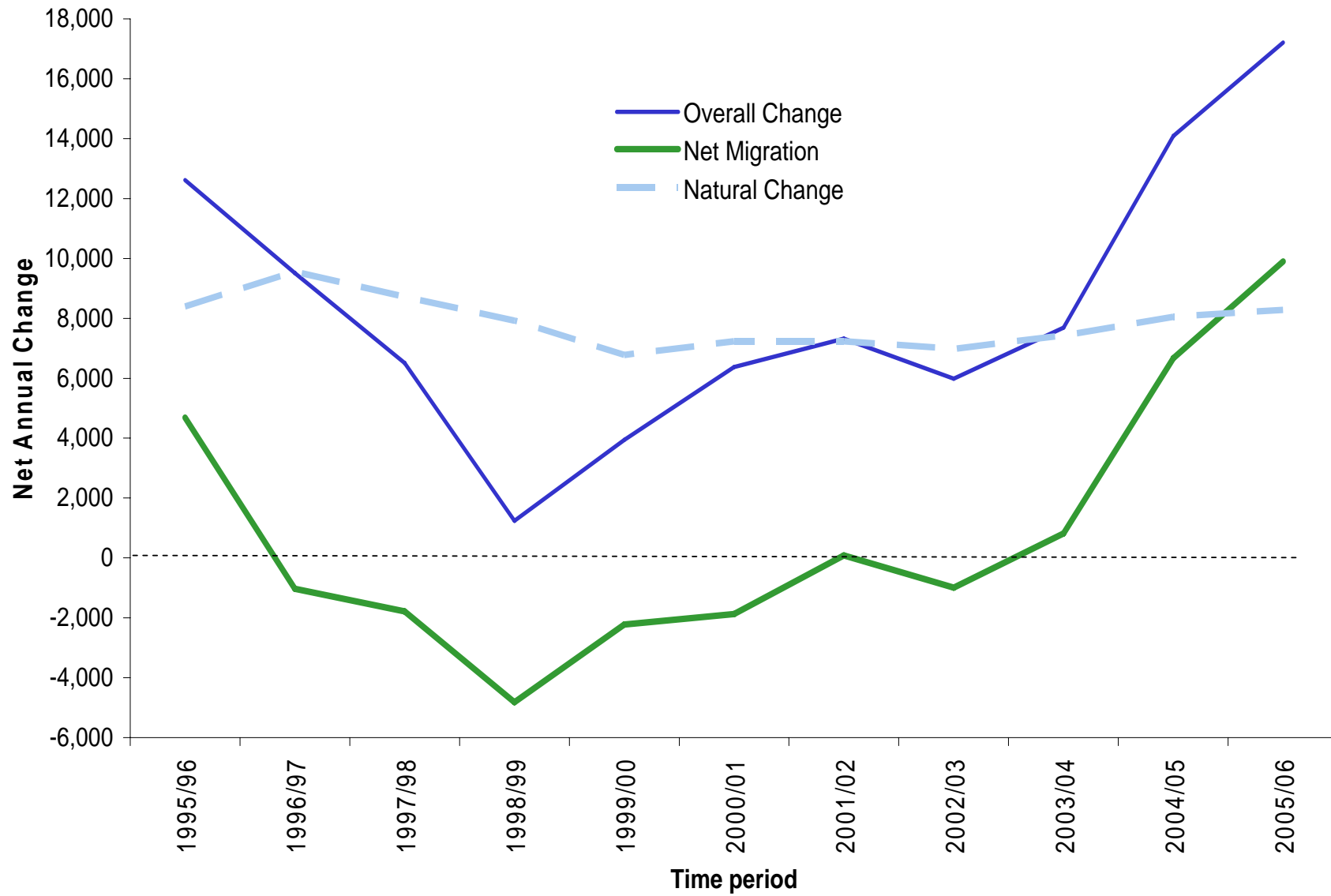


Table 3 Components of population change, by area, 2005 to 2006

Area	Population at start of period June 2005	Births ¹ 2005/2006	Deaths ¹ 2005/2006	Natural Change 2005/2006	Migration 2005/2006	Other Changes ² 2005/2006	Population at end of period June 2006	Population Change	
								Number	%
Northern Ireland	1,724,400	22,700	14,400	8,300	9,900	-1,000	1,741,600	17,200	1.0
Local Government District									
Antrim	50,500	700	300	400	900	-200	51,500	1,000	1.9
Ards	75,300	900	700	200	700	0	76,200	900	1.2
Armagh	55,800	800	400	400	700	0	56,800	1,000	1.9
Ballymena	60,700	800	500	300	400	0	61,400	600	1.0
Ballymoney	28,700	400	200	100	300	0	29,200	500	1.7
Banbridge	44,800	600	300	300	400	0	45,500	700	1.6
Belfast	268,000	3,400	2,800	600	-1,200	0	267,400	-600	-0.2
Carrickfergus	39,200	500	300	200	400	0	39,700	500	1.4
Castlereagh	65,700	800	600	200	-200	0	65,600	0	0.0
Coleraine	56,600	600	500	100	0	0	56,700	200	0.3
Cookstown	34,100	500	300	200	500	0	34,800	700	2.0
Craigavon	84,700	1,300	600	600	1,400	0	86,800	2,100	2.5
Derry	107,300	1,500	800	800	-100	0	107,900	600	0.6
Down	67,400	800	500	300	700	-100	68,300	900	1.3
Dungannon	50,700	800	400	300	1,200	0	52,300	1,600	3.1
Fermanagh	59,700	800	500	200	600	0	60,600	900	1.4
Larne	31,100	400	300	100	100	0	31,300	200	0.6
Limavady	34,100	500	200	200	100	-100	34,300	200	0.6
Lisburn	111,500	1,500	800	700	1,100	-300	112,900	1,400	1.3
Magherafelt	41,800	600	300	300	300	0	42,400	600	1.4
Moyle	16,500	200	100	0	0	0	16,500	0	0.2
Newry and Mourne	91,600	1,400	700	700	1,100	0	93,400	1,900	2.0
Newtownabbey	80,800	1,000	600	400	0	0	81,200	400	0.5
North Down	78,300	900	800	100	400	-100	78,700	400	0.5
Omagh	50,700	700	400	300	100	-100	51,000	300	0.6
Strabane	38,700	500	300	200	100	0	39,100	400	1.0

¹ Mid 2005 to 2006.

² Other changes principally relates to changes in Her Majesty's Forces stationed in Northern Ireland.

Table 3 Components of population change, by area, 2005 to 2006

Area	Population at start of period June 2005	Births ¹ 2005/2006	Deaths ¹ 2005/2006	Natural Change 2005/2006	Migration 2005/2006	Other Changes ² 2005/2006	Population at end of period June 2006	Population Change	
								Number	%
Health and Social Services Boards									
Eastern	666,200	8,200	6,200	2,000	1,400	-500	669,100	2,900	0.4
Northern	440,100	5,600	3,500	2,100	2,800	-300	444,700	4,600	1.1
Southern	327,500	4,900	2,500	2,400	4,900	0	334,800	7,300	2.2
Western	290,600	4,000	2,200	1,800	800	-200	293,000	2,400	0.8
Education and Library Boards									
Belfast	268,000	3,400	2,800	600	-1,200	0	267,400	-600	-0.2
North Eastern	406,000	5,100	3,200	1,900	2,300	-300	409,900	4,000	1.0
South Eastern	398,200	4,800	3,400	1,400	2,600	-500	401,700	3,600	0.9
Southern	361,600	5,400	2,800	2,600	5,400	0	369,600	8,000	2.2
Western	290,600	4,000	2,200	1,800	800	-200	293,000	2,400	0.8
NUTS III Areas									
Belfast	268,000	3,400	2,800	600	-1,200	0	267,400	-600	-0.2
East of N. Ireland	375,500	4,600	3,100	1,500	1,600	-400	378,200	2,700	0.7
North of N. Ireland	414,500	5,400	3,300	2,100	4,500	-300	420,900	6,400	1.5
Outer Belfast	282,000	3,700	2,100	1,600	400	-100	283,900	1,900	0.7
West & South of N. Ireland	384,400	5,600	3,100	2,500	4,500	-100	391,300	6,900	1.8

¹ Mid 2005 to 2006.

² Other changes principally relates to changes in Her Majesty's Forces stationed in Northern Ireland.

Table 3 Components of population change, by area, 2005 to 2006

Area	Population at start of period June 2005	Births ¹ 2005/2006	Deaths ¹ 2005/2006	Natural Change 2005/2006	Migration 2005/2006	Other Changes ² 2005/2006	Population at end of period June 2006	Population Change	
								Number	%
Parliamentary Constituencies									
Belfast East	77,600	900	900	0	200	0	77,700	200	0.2
Belfast North	81,700	1,200	1,000	200	0	0	81,900	200	0.3
Belfast South	92,800	1,000	800	200	-800	0	92,200	-600	-0.6
Belfast West	85,000	1,200	800	400	-700	0	84,700	-300	-0.4
East Antrim	85,900	1,100	700	300	500	0	86,700	800	0.9
East Londonderry	90,700	1,100	700	400	100	-100	91,100	400	0.4
Fermanagh & South Tyrone	95,400	1,300	800	500	1,700	0	97,600	2,200	2.3
Foyle	107,300	1,500	800	800	-100	0	107,900	600	0.6
Lagan Valley	106,500	1,400	800	600	1,300	-300	108,000	1,600	1.5
Mid Ulster	91,000	1,300	700	600	900	0	92,500	1,500	1.6
Newry & Armagh	104,500	1,600	800	700	1,100	0	106,300	1,800	1.8
North Antrim	106,000	1,300	900	500	700	0	107,100	1,100	1.1
North Down	88,200	1,000	900	100	600	-100	88,800	600	0.6
South Antrim	103,300	1,300	700	700	800	-200	104,500	1,200	1.2
South Down	110,700	1,500	800	700	1,500	-100	112,800	2,100	1.9
Strangford	100,300	1,200	800	400	500	0	101,200	800	0.8
Upper Bann	108,100	1,600	800	800	1,500	0	110,400	2,300	2.1
West Tyrone	89,500	1,200	700	600	200	-100	90,200	700	0.8

¹ Mid 2005 to 2006.

² Other changes principally relates to changes in Her Majesty's Forces stationed in Northern Ireland.

Table 4**Detailed Migration, 2005 to 2006**

Area	Population at June 2006	Net Internal Migration¹ 2005/2006	Net External Migration² 2005/2006	Net Total Migration 2005/2006
Northern Ireland	1,741,600	0	9,900	9,900
Local Government Districts				
Antrim	51,500	400	500	900
Ards	76,200	500	200	700
Armagh	56,800	200	500	700
Ballymena	61,400	100	300	400
Ballymoney	29,200	200	100	300
Banbridge	45,500	200	200	400
Belfast	267,400	-2,100	900	-1,200
Carrickfergus	39,700	300	100	400
Castlereagh	65,600	-200	0	-200
Coleraine	56,700	-200	200	0
Cookstown	34,800	100	300	500
Craigavon	86,800	200	1,200	1,400
Derry	107,900	-200	100	-100
Down	68,300	400	300	700
Dungannon	52,300	-200	1,400	1,200
Fermanagh	60,600	100	600	600
Larne	31,300	0	100	100
Limavady	34,300	0	100	100
Lisburn	112,900	500	600	1,100
Magherafelt	42,400	-100	400	300
Moyle	16,500	-100	100	0
Newry and Mourne	93,400	-100	1,200	1,100
Newtownabbey	81,200	-100	0	0
North Down	78,700	200	200	400
Omagh	51,000	-100	200	100
Strabane	39,100	100	100	100

¹ Internal migration relates to population migration across local areas within Northern Ireland only.

² External migration relates to migration flows with Great Britain, the Republic of Ireland and the Rest of the World.

Table 4 Detailed Migration, 2005 to 2006

Area	Population at June 2006	Net Internal Migration¹ 2005/2006	Net External Migration² 2005/2006	Net Total Migration 2005/2006
Health and Social Services Boards				
Eastern	669,100	-800	2,200	1,400
Northern	444,700	700	2,100	2,800
Southern	334,800	400	4,500	4,900
Western	293,000	-300	1,000	800
Education and Library Boards				
Belfast	267,400	-2,100	900	-1,200
North Eastern	409,900	500	1,800	2,300
South Eastern	401,700	1,300	1,300	2,600
Southern	369,600	500	4,900	5,400
Western	293,000	-300	1,000	800
NUTS III Areas				
Belfast	267,400	-2,100	900	-1,200
East of N. Ireland	378,200	700	900	1,600
North of N. Ireland	420,900	1,800	2,700	4,500
Outer Belfast	283,900	-300	700	400
West & South of N. Ireland	391,300	-200	4,700	4,500

¹ Internal migration relates to population migration across local areas within Northern Ireland only.

² External migration relates to migration flows with Great Britain, the Republic of Ireland and the Rest of the World.

Table 4 Detailed Migration, 2005 to 2006

Area	Population at June 2006	Net Internal Migration¹ 2005/2006	Net External Migration² 2005/2006	Net Total Migration 2005/2006
Parliamentary Constituencies				
Belfast East	77,700	-100	300	200
Belfast North	81,900	-300	300	0
Belfast South	92,200	-1,300	500	-800
Belfast West	84,700	-800	100	-700
East Antrim	86,700	400	100	500
East Londonderry	91,100	-300	300	100
Fermanagh & South Tyrone	97,600	0	1,800	1,700
Foyle	107,900	-200	100	-100
Lagan Valley	108,000	700	600	1,300
Mid Ulster	92,500	-100	1,000	900
Newry & Armagh	106,300	-100	1,200	1,100
North Antrim	107,100	200	500	700
North Down	88,800	400	200	600
South Antrim	104,500	300	400	800
South Down	112,800	700	800	1,500
Strangford	101,200	300	200	500
Upper Bann	110,400	200	1,300	1,500
West Tyrone	90,200	-100	300	200

¹ Internal migration relates to population migration across local areas within Northern Ireland only.

² External migration relates to migration flows with Great Britain, the Republic of Ireland and the Rest of the World.

Table 5 Local population estimates for selected age groups, by area, 2006

Area	Numbers				Percentages		
	All Ages	Children ¹	Working Age ²	Pensioners ³	Children ¹	Working Age ²	Pensioners ³
Northern Ireland	1,741,600	380,100	1,077,400	284,100	21.8	61.9	16.3
Local Government Districts							
Antrim	51,500	12,000	32,300	7,300	23.3	62.6	14.1
Ards	76,200	15,100	47,400	13,700	19.9	62.2	18.0
Armagh	56,800	13,400	34,500	8,900	23.6	60.7	15.7
Ballymena	61,400	12,800	37,400	11,200	20.8	60.9	18.3
Ballymoney	29,200	6,400	17,900	4,900	22.0	61.2	16.8
Banbridge	45,500	10,100	28,500	6,900	22.2	62.7	15.1
Belfast	267,400	53,200	167,000	47,200	19.9	62.5	17.6
Carrickfergus	39,700	8,400	24,600	6,700	21.1	62.0	16.9
Castlereagh	65,600	13,100	39,500	13,000	20.0	60.1	19.9
Coleraine	56,700	11,800	34,300	10,600	20.8	60.5	18.6
Cookstown	34,800	8,200	21,600	5,000	23.5	62.1	14.5
Craigavon	86,800	19,500	53,800	13,500	22.5	62.0	15.5
Derry	107,900	26,100	67,900	13,900	24.2	63.0	12.9
Down	68,300	15,400	42,100	10,800	22.6	61.6	15.8
Dungannon	52,300	12,200	32,400	7,700	23.4	61.9	14.7
Fermanagh	60,600	13,100	37,500	10,000	21.6	61.9	16.5
Larne	31,300	6,300	19,200	5,700	20.2	61.5	18.3
Limavady	34,300	8,000	21,900	4,500	23.2	63.7	13.1
Lisburn	112,900	25,900	69,900	17,100	23.0	61.9	15.2
Magherafelt	42,400	10,000	26,600	5,900	23.5	62.6	13.9
Moyle	16,500	3,500	10,000	3,100	21.1	60.4	18.5
Newry and Mourne	93,400	23,200	57,100	13,200	24.8	61.1	14.1
Newtownabbey	81,200	16,700	50,000	14,500	20.6	61.6	17.9
North Down	78,700	14,700	48,200	15,800	18.7	61.3	20.0
Omagh	51,000	11,900	32,000	7,200	23.2	62.6	14.1
Strabane	39,100	9,200	24,000	5,900	23.4	61.4	15.2

¹ Children are defined as those in the population aged under 16.

² Working age is defined as the female population aged 16 to 59 and the male population aged 16 to 64.

³ Pensioners are defined as the female population aged 60 and over and the male population aged 65 and over.

Table 5 Local population estimates for selected age groups, by area, 2006

Area	Numbers				Percentages		
	All Ages	Children ¹	Working Age ²	Pensioners ³	Children ¹	Working Age ²	Pensioners ³
Health and Social Services Boards							
Eastern	669,100	137,500	414,000	117,600	20.6	61.9	17.6
Northern	444,700	96,000	273,800	74,800	21.6	61.6	16.8
Southern	334,800	78,400	206,300	50,100	23.4	61.6	15.0
Western	293,000	68,200	183,300	41,500	23.3	62.6	14.2
Education and Library Boards							
Belfast	267,400	53,200	167,000	47,200	19.9	62.5	17.6
North Eastern	409,900	87,900	252,200	69,800	21.4	61.5	17.0
South Eastern	401,700	84,300	247,000	70,400	21.0	61.5	17.5
Southern	369,600	86,600	227,900	55,100	23.4	61.7	14.9
Western	293,000	68,200	183,300	41,500	23.3	62.6	14.2
NUTS III Areas							
Belfast	267,400	53,200	167,000	47,200	19.9	62.5	17.6
East of N. Ireland	420,900	91,200	260,600	69,000	21.7	61.9	16.4
North of N. Ireland	283,900	65,000	176,100	42,900	22.9	62.0	15.1
Outer Belfast	378,200	78,900	232,100	67,100	20.9	61.4	17.8
West & South of N. Ireland	391,300	91,900	241,600	57,900	23.5	61.7	14.8

¹ Children are defined as those in the population aged under 16.

² Working age is defined as the female population aged 16 to 59 and the male population aged 16 to 64.

³ Pensioners are defined as the female population aged 60 and over and the male population aged 65 and over.

Table 5 Local population estimates for selected age groups, by area, 2006

Area	Numbers				Percentages		
	All Ages	Children ¹	Working Age ²	Pensioners ³	Children ¹	Working Age ²	Pensioners ³
Parliamentary Constituencies							
Belfast East	77,700	14,400	46,500	16,800	18.6	59.9	21.6
Belfast North	81,900	17,600	48,200	16,100	21.5	58.8	19.7
Belfast South	92,200	15,100	62,100	15,000	16.4	67.3	16.2
Belfast West	84,700	21,000	51,300	12,300	24.8	60.6	14.6
East Antrim	86,700	18,100	53,700	14,900	20.9	61.9	17.2
East Londonderry	91,100	19,800	56,200	15,100	21.7	61.7	16.5
Fermanagh & South Tyrone	97,600	21,300	60,500	15,700	21.9	62.0	16.1
Foyle	107,900	26,100	67,900	13,900	24.2	63.0	12.9
Lagan Valley	108,000	23,700	66,800	17,500	22.0	61.8	16.2
Mid Ulster	92,500	22,100	57,500	12,900	23.9	62.2	13.9
Newry and Armagh	106,300	25,700	64,700	15,900	24.2	60.8	15.0
North Antrim	107,100	22,700	65,200	19,200	21.2	60.9	17.9
North Down	88,800	16,500	54,200	18,000	18.6	61.0	20.3
South Antrim	104,500	22,900	65,400	16,200	21.9	62.6	15.5
South Down	112,800	26,500	69,500	16,800	23.5	61.6	14.9
Strangford	101,200	20,600	62,900	17,600	20.4	62.2	17.4
Upper Bann	110,400	24,700	68,700	17,000	22.3	62.3	15.4
West Tyrone	90,200	21,000	56,000	13,100	23.3	62.1	14.6

¹ Children are defined as those in the population aged under 16.

² Working age is defined as the female population aged 16 to 59 and the male population aged 16 to 64.

³ Pensioners are defined as the female population aged 60 and over and the male population aged 65 and over.

NOTES TO EDITORS

1. The Northern Ireland mid year population estimate relates to the usually resident population of Northern Ireland including Her Majesty's Forces stationed here. Births and deaths recorded are those registered by the General Register Office between mid-2005 and mid-2006.
2. Following international guidelines migration statistics relate only to long-term migrants (i.e. someone who changes their place of residence for a year or more (Recommendations on Statistics of International Migration, United Nations, 1998)).
3. This information can also be accessed on the Northern Ireland Statistics and Research Agency's website at:
http://www.nisra.gov.uk/demography/default.asp?cmsid=20_21_24&cms=demography_population%20statistics_Mid%2Dyear+population+estimates&release
4. A paper is also being published today entitled "International Migration Estimates for Northern Ireland (2005-6) – Sources and Methodology". This updates analysis undertaken by NISRA last year and provides more detailed statistics on measures of long-term international migration. This paper can be found at:
http://www.nisra.gov.uk/demography/default.asp?cmsid=20_45&cms=demography_Publications&release
5. All media inquiries should directed to DFP Press Office
Telephone: 028 9052 7374
Fax: 028 9052 7149
6. Further statistical information can be obtained from NISRA Customer Services:
Telephone: 028 9034 8160
Fax: 028 9034 8161
E-mail: census.nisra@dfpni.gov.uk