

## **AUGUST MONTHLY SUMMARY STATISTICS**

These figures relate to GB except where otherwise indicated.

### **Contents**

- 1. BSE.**
  - 1.1 Overview of the decline in the epidemic.  
Table 1.1a Comparing equivalent time periods.  
Table 1.1b Comparing full calendar years.
  - 1.2 General statistics.
  - 1.3 Number of newly affected herds by year of onset of first confirmed case.
  - 1.4 Distribution of farms by number of confirmed cases (excluding dealers and survey cases).
  - 1.5 Confirmed cases of BSE in Great Britain by year of birth where known.
  - 1.6 Youngest and oldest cases by year of onset.
  - 1.7 Age at clinical onset in years by birth cohort.
  - 1.8 Confirmed cases of BSE in animals born after 1 August 1996.
  - 1.9 Confirmed cases of BSE per million head of cattle population over 24 months of age - shown by 12 month rolling period starting January 1997.
    - (a) Great Britain.
    - (b) Northern Ireland.
    - (c) United Kingdom.
  - 1.10 BSE cases suspected and their diagnosis
    - (a) UK Summary
    - (b) Great Britain
    - (c) England
    - (d) Wales
    - (e) Scotland
    - (f) Northern Ireland
  - 1.11 BSE cases born after the feed ban
    - (a) Great Britain
    - (b) Northern Ireland
  - 1.12 BSE in the United Kingdom: Confirmed cases in passive surveillance animals restricted and active surveillance animals slaughtered by age (years) at clinical onset – 2007
  - 1.13 BSE in the United Kingdom: Regional/county summary of confirmed cases in animals from passive and active surveillance - 2007
  - 1.14 BSE suspect cases born on or after 01 January 1996
    - (a) Great Britain
    - (b) Northern Ireland
- 2. Summary of Scrapie cases**
- 3. Feline Spongiform Encephalopathy.**
- 4. TSE in exotic species.**

## MONTHLY SUMMARY STATISTICS – BSE, SCRAPIE AND OTHER TSEs

### 1.1.OVERVIEW OF THE DECLINE IN THE EPIDEMIC

**TABLE 1.1A. AN OVERVIEW OF THE DECLINE IN THE EPIDEMIC COMPARING EQUIVALENT TIME PERIODS**

	Cases Restricted 01.01-31.08 in each year indicated	Per cent reduction year on year <sup>1</sup>	Per cent reduction from named year <sup>2</sup>	Of cases restricted, the number currently confirmed <sup>3</sup>	Per cent reduction in confirmed cases year on year <sup>1,4</sup>	Per cent reduction of confirmed cases from named year <sup>2</sup>
<b>2007</b>	56	50.00		4	63.64	
<b>2006</b>	112	18.25	50.00	11	56.00	63.64
<b>2005</b>	137	46.06	59.12	25	58.33	84.00
<b>2004</b>	254	21.36	77.95	60	49.58	93.33
<b>2003</b>	323	50.31	82.66	119	63.61	96.64
<b>2002</b>	650	20.92	91.38	327	37.83	98.78
<b>2001</b>	822	38.01	93.19	526	43.68	99.24
<b>2000</b>	1326	39.73	95.78	934	43.70	99.57

**TABLE 1.1B. AN OVERVIEW OF THE DECLINE IN THE EPIDEMIC COMPARING FULL CALENDAR YEARS**

Year	Restricted	Per cent reduction year on year <sup>1</sup>	Of which confirmed <sup>5</sup>	Per cent reduction year on year <sup>1</sup>
<b>2006</b>	144	22.58	15	61.54
<b>2005</b>	186	47.01	39	52.44
<b>2004</b>	351	23.03	82	52.60
<b>2003</b>	456	48.00	173	61.12
<b>2002</b>	877	28.00	445	43.02
<b>2001</b>	1218	34.87	781	40.43
<b>2000</b>	1870	37.33	1311	41.89

Notes to above tables:

<sup>1</sup> i.e. 2001 vs 2000; 2000 vs 1999, etc

<sup>2</sup> i.e. 2001 vs 2000; 2001 vs 1999; 2001 vs 1998, etc

<sup>3</sup> Note that to 03 September 2007, 3 pending for the current year.

<sup>4</sup> Due to pending cases for the current year the reduction for the current year will fall as further results are received.

<sup>5</sup> Note that one case originally restricted in 1997 and two cases in 1999 were re-restricted and confirmed in 2002, but shown under 1997 and 1999 in the table.

The above tables do not include cases identified as part of surveys or private submissions.

**1.2. GENERAL STATISTICS – AS AT 03/09/2007  
PER CENT**

TOTAL FARMS	36160	n/a
TOTAL CASES	181049	n/a
DAIRY FARMS	22414	61.99
SUCKLER FARMS	10205	28.22
MIXED FARMS	2136	5.91
NOT RECORDED	1405	3.89
DAIRY CASES	146119	80.71
SUCKLER CASES	21917	12.11
MIXED CASES	10645	5.88
NOT RECORDED	2368	1.31
PURCHASED CASES	59079	32.63
HOME BRED CASES	120656	66.64
NOT RECORDED	1314	0.73

CONFIRMED DAIRY HERD INCIDENCE	62.1%
CONFIRMED SUCKLER HERD INCIDENCE	17.7%
CONFIRMED TOTAL HERD INCIDENCE	38.6%
YOUNGEST CONFIRMED CASE	20 months
OLDEST CONFIRMED CASE	22yrs 7mths

**1.3. NUMBER OF NEWLY AFFECTED HERDS BY YEAR OF FIRST  
CONFIRMED CASE – AS AT 03/09/07**

YEAR	NO. HOME BRED	NO. PURCHASED	TOTAL
1986 (From July)	8	1	9
1987	292	32	324
1988	1576	342	1918
1989	2618	773	3391
1990	3157	1321	4478
1991	3729	2088	5817
1992	3966	3300	7266
1993	2794	2997	5791
1994	1273	1381	2654
1995	659	742	1401
1996	348	416	764
1997	216	267	483
1998	216	183	399
1999	103	145	248
2000	76	93	169
2001	47	77	124
2002	30	63	93
2003	16	30	46
2004	5	12	17
2005	6	2	8
2006	1	3	4
2007 (as at 03 Sept 2007)	0	0	0

## 1.4. DISTRIBUTION OF FARMS BY NUMBER OF CONFIRMED CASES (EXCLUDING DEALERS AND SURVEY CASES)

as at 03 September 2007

No. of cases	No. of farms	Percent	No. of cases	No. of farms	Percent	No. of cases	No. of farms	Percent
1	12388	35.1	51	6	0.0	101	1	0.0
2	5587	15.8	52	8	0.0	102	0	0.0
3	3657	10.3	53	8	0.0	103	1	0.0
4	2485	7.0	54	4	0.0	104	0	0.0
5	1946	5.5	55	5	0.0	105	0	0.0
6	1468	4.2	56	2	0.0	106	0	0.0
7	1218	3.4	57	3	0.0	107	0	0.0
8	884	2.5	58	5	0.0	108	1	0.0
9	742	2.1	59	0	0.0	109	0	0.0
10	669	1.9	60	1	0.0	110	1	0.0
11	535	1.5	61	5	0.0	111	0	0.0
12	463	1.3	62	2	0.0	112	0	0.0
13	384	1.1	63	2	0.0	113	0	0.0
14	321	0.9	64	0	0.0	114	0	0.0
15	284	0.8	65	1	0.0	115	0	0.0
16	263	0.7	66	2	0.0	116	0	0.0
17	199	0.6	67	5	0.0	117	0	0.0
18	190	0.5	68	2	0.0	118	0	0.0
19	196	0.6	69	0	0.0	119	0	0.0
20	131	0.4	70	1	0.0	120	0	0.0
21	126	0.4	71	0	0.0	121	0	0.0
22	110	0.3	72	4	0.0	122	0	0.0
23	112	0.3	73	0	0.0	123	0	0.0
24	94	0.3	74	0	0.0	124	1	0.0
25	83	0.2	75	1	0.0			
26	80	0.2	76	1	0.0			
27	77	0.2	77	0	0.0			
28	65	0.2	78	0	0.0			
29	56	0.2	79	2	0.0			
30	44	0.1	80	1	0.0			
31	47	0.1	81	0	0.0			
32	35	0.1	82	0	0.0			
33	41	0.1	83	1	0.0			
34	38	0.1	84	1	0.0			
35	20	0.1	85	0	0.0			
36	29	0.1	86	0	0.0			
37	22	0.1	87	0	0.0			
38	18	0.1	88	0	0.0			
39	32	0.1	89	0	0.0			
40	8	0.0	90	1	0.0			
41	18	0.1	91	0	0.0			
42	13	0.0	92	0	0.0			
43	14	0.0	93	0	0.0			
44	16	0.0	94	0	0.0			
45	7	0.0	95	0	0.0			
46	7	0.0	96	0	0.0			
47	9	0.0	97	0	0.0			
48	14	0.0	98	0	0.0			
49	7	0.0	99	0	0.0			
50	9	0.0	100	1	0.0			

**1.5. CONFIRMED CASES OF BSE IN GREAT BRITAIN BY YEAR OF BIRTH WHERE KNOWN.**

Year	GB	Northern Ireland	UK
1974	1	0	1
1975	0	0	0
1976	2	0	2
1977	10	1	11
1978	6	0	6
1979	41	3	44
1980	102	3	105
1981	262	7	269
1982	1394	6	1400
1983	4463	28	4491
1984	8069	51	8120
1985	11071	170	11241
1986	19752	222	19974
1987	36936	539	37475
1988	22266	488	22754
1989	12748	132	12880
1990	5749	70	5819
1991	4780	50	4830
1992	3536	45	3581
1993	3008	73	3081
1994	2192	105	2297
1995	1111	129	1240
1996	70	32	102
1997	45	7	52
1998	42	6	48
1999	26	4	30
2000	8	3	9
2001	6	1	7
2002	2	0	2
Unknown	43351	1	43352
<b>Totals</b>	<b>181049</b>	<b>2176</b>	<b>183225</b>

Data valid to 03/09/2007

**1.6. YOUNGEST AND OLDEST CASES BY YEAR OF ONSET (FOR PASSIVE SURVEILLANCE CASES) AND ON YEAR OF SLAUGHTER (FOR ACTIVE SURVEILLANCE CASES) AS AT 03/09/2007**

**NB The last case in an animal aged 30 months or less was in 1996**

YR OF ONSET	AGE YOUNGEST CASE (mths)	AGE 2 <sup>nd</sup> YOUNGEST CASE (mths)	AGE 2 <sup>nd</sup> OLDEST (yrs.mths)	OLDEST CASE (yrs.mths)
1986	30	33	5.03	5.07
1987	30	31	9.09	10
1988	24	27	10.02	11.01(2)
1989	21	24(4)	12(2)	15.04
1990	24(2)	26	13.03	14
1991	24	26(3)	14.02	17.05
1992	20	26	15.02	16.02
1993	29	30(3)	14.1	18.1
1994	30(2)	31(2)	14.05	16.07
1995	24	32	14.09	15.05
1996	29	30	15.07	17.02
1997	37(7)	38(3)	14.09	15.01
1998	34	36	14.07	15.05
1999	39(2)	41	13.07	13.1
2000	40	42	17.08	19.09
2001	45	48	16.01	20.08
2002	47	48(2)	18.04	22.07
2003	46	49	18.07(2)	20.06
2004	49	52	17.04	22.07
2005	36	38	18.01	19.04
2006	48	58	17.05	19.09
2007	81(2)	88	15(02)	17.03

### 1.7. AGE AT CLINICAL ONSET IN YEARS BY BIRTH COHORT AS AT 03/09/2007

Please note that this table shows only cases where the date of birth can be confirmed, plus some estimated dates of clinical onset and the dates of slaughter/death for active surveillance cases.

Birth cohort	AGE AT CLINICAL ONSET (YEARS)										
	1-	2-	3-	4-	5-	6-	7-	8-	9-	10-	11-
Pre-1981	0	0	0	0	2	5	47	48	34	31	24
1981/82	0	0	0	0	35	102	107	60	44	17	18
1982/83	0	0	3	118	534	648	332	136	117	58	34
1983/84	0	2	83	897	1877	1271	564	316	137	81	35
1984/85	0	5	349	2171	2830	1582	752	341	190	67	28
1985/86	0	14	680	3587	3930	2519	1085	470	202	71	24
1986/87	0	36	1530	6724	7677	4542	1811	640	211	71	25
1987/88	1	60	3346	13202	12753	6546	2292	699	193	81	28
1988/89	0	19	1068	5137	5671	3033	1136	309	117	55	11
1989/90	0	21	836	3627	3821	1899	607	156	46	20	11
1990/91	1	21	406	1695	1716	769	257	96	30	28	18
1991/92	0	8	411	1478	1328	656	239	87	66	46	29
1992/93	0	6	235	874	1029	599	232	124	64	50	22
1993/94	0	3	118	721	810	407	229	140	51	39	14
1994/95	0	0	108	425	413	361	218	102	42	26	16
1995/96	0	1	29	85	121	111	71	26	7	9	2
1996/97	0	0	2	5	9	7	5	2	0	1	0
1997/98	0	0	0	3	11	2	5	1	1	0	0
1998/99	0	0	0	6	4	10	2	1	0	0	0
1999/00	0	0	0	2	2	3	0	0	0	0	0
2000/01	0	0	0	1	4	0	0	0	0	0	0
2001/02	0	0	1	0	0	0	0	0	0	0	0
2002/03	0	0	0	0	0	0	0	0	0	0	0

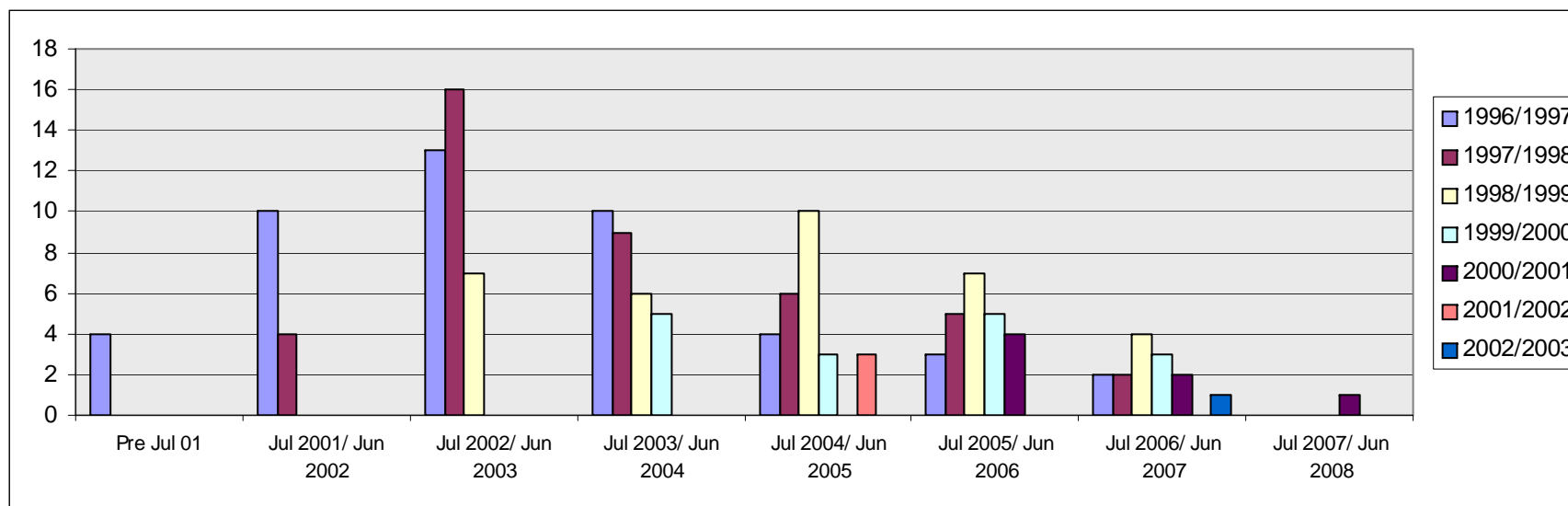
The shaded areas represent complete data, where few future changes are expected (except for minor changes associated with corrections to dates of birth of individual cases). Most of the new cases are therefore in the clear cells at the bottom right quadrant of the table. The diagonal row of cells adjacent to the shaded area should be complete by the end of the year.

## 1.8. CONFIRMED CASES OF BSE IN ANIMALS BORN AFTER 1 AUGUST 1996 (BARBS).

Birth cohorts by date of onset of disease.

Cohort(Jul-Jun)	Pre Jul 01	Jul 2001/ Jun 2002	Jul 2002/ Jun 2003	Jul 2003/ Jun 2004	Jul 2004/ Jun 2005	Jul 2005/ Jun 2006	Jul 2006/ Jun 2007	Jul 2007/ Jun 2008
1996/1997	4	10	13	10	4	3	2	0
1997/1998	0	4	16	9	6	5	2	0
1998/1999	0	0	7	6	10	7	4	0
1999/2000	0	0	0	5	3	5	3	0
2000/2001	0	0	0	0	0	4	2	1
2001/2002	0	0	0	0	3	0	0	0
2002/2003	0	0	0	0	0	0	1	0

\* cohorts defined as born between 1 July in one year and 30 June in the following year.



NOTE: \*Birth cohorts are June – July

\*\*Date of onset for passive surveillance cases, or date of slaughter for active surveillance.



## 1.9. CONFIRMED CASES OF BSE PER MILLION HEAD OF CATTLE POPULATION OVER 24 MONTHS OF AGE – SHOWN BY 12 MONTH ROLLING PERIODS STARTING JANUARY 1997

(a) Great Britain.

Rolling 12 month period	Cattle population over 24 months of age <sup>1</sup>	Number of confirmed cases of BSE in the same period		Confirmed cases per Million head of cattle population			
		By date of confirmation <sup>2,5,6</sup>	By date of restriction <sup>3</sup>	By date of confirmation <sup>2,5,6</sup>	By date of restriction <sup>3</sup>		
	Millions						
Jan97 – Dec97 <sup>4</sup>	4.735	4847	4310	1,023.7	910.2		
Jan98 – Dec98 <sup>4</sup>	4.695	3445	3179	733.8	677.1		
Jan99 – Dec99 <sup>4</sup>	4.719	2680	2256	567.9	478.1		
Jan00 – Dec00 <sup>4</sup>	4.542	1541	1311	339.3	288.6		
Jan01 – Dec01 <sup>4</sup>	4.310	1032	(261)	239.4	(60.6)	181.2	
Jan02 – Dec02 <sup>4</sup>	4.213	1106	(598)	262.5	(141.9)	105.6	
Jan03 – Dec03 <sup>4</sup>	4.216	608	(431)	144.2	(102.0)	41.0	
Jan04 – Dec04 <sup>4</sup>	4.200	328	(235)	78.1	(56.0)	19.5	
Feb04 – Jan05	4.200	316	(235)	75	75.2	(56.0)	17.9
Mar04 – Feb05	4.200	298	(224)	68	71.0	(53.3)	16.2
Apr04 – Mar05	4.200	285	(216)	63	67.9	(51.4)	15.0
May04 – Apr05	4.200	273	(212)	59	65.0	(50.5)	12.9
Jun04 – May05	4.200	265	(205)	56	63.1	(48.8)	13.3
Jul04 – Jun05	4.133	261	(202)	53	63.2	(48.9)	12.8
Aug04 – Jul05	4.133	244	(188)	51	59.0	(45.5)	12.3
Sep04 – Aug05	4.133	235	(185)	47	56.9	(44.8)	11.4
Oct04 – Sep05	4.133	220	(174)	43	53.2	(42.1)	10.4
Nov04 – Oct05	4.133	217	(172)	41	52.5	(41.6)	9.9
Dec04 – Nov05	4.133	207	(165)	41	50.1	(39.9)	9.9
Jan05 – Dec05	4.133	205	(165)	39	49.6	(39.9)	9.4
Feb05 – Jan06	4.133	202	(164)	35	48.9	(39.7)	8.5
Mar05 – Feb06	4.133	199	(163)	38	48.1	(39.4)	9.2
Apr05 – Mar06	4.133	182	(144)	37	44.0	(34.8)	9.0
May05 – Apr06	4.133	170	(133)	33	41.1	(32.2)	8.0
Jun05 – May06	4.133	160	(127)	32	38.7	(30.7)	7.7
Jul05 – Jun06	4.162	148	(118)	29	35.6	(28.4)	7.0
Aug05 – Jul06	4.162	147	(119)	27	35.3	(28.6)	6.5
Sep05 – Aug06	4.162	142	(115)	25	34.1	(27.6)	6.0
Oct05 – Sep06	4.162	142	(117)	25	34.1	(28.1)	6.0
Nov05 – Oct06	4.162	138	(112)	22	33.2	(26.9)	5.3
Dec05 – Nov06	4.162	122	(102)	18	29.3	(24.5)	4.3
Jan06 – Dec06	4.162	121	(103)	15	29.1	(24.7)	3.6
Feb06 – Jan07	4.162	104	(89)	16	25.0	(21.4)	3.8
Mar06 – Feb07	4.162	100	(85)	12	24.0	(20.4)	2.9
Apr06 – Mar07	4.162	92	(80)	10	22.1	(19.2)	2.4
May06 – Apr07	4.162	84	(74)	9	20.2	(17.8)	2.2
Jun06 – May07	4.162	78	(69)	9	18.7	(16.6)	2.2
Jul06 – Jun07	4.162	73	(65)	8	17.5	(15.6)	1.9
Aug06 – Jul07	4.162	73	(65)	8	17.5	(15.6)	1.9
Sep06 – Aug07	4.162	72	(63)	8	17.3	(15.1)	1.9

As at 03 September 2007

Note:

'By date of confirmation' refers to the date disease was confirmed; regardless of the date the animal was first restricted as a suspect. 'By date of restriction' refers to the date an animal was first restricted as a suspect, regardless of when disease was ultimately confirmed.

<sup>1</sup>Cattle population figures based on June 1997, 1998, 1999 and 2000 census data, on an all holdings basis. Figures supplied by Stats (York) – same section that provides Eurostat data.

<sup>2</sup>Includes private submissions and survey cases which were not placed under restriction.

<sup>3</sup>Some cases placed under restriction during and since June 2002 are still awaiting diagnoses.

<sup>4</sup>This line shows averages for the whole year

<sup>5</sup>The figures in these columns have been amended following corrections to the database.

<sup>6</sup>The figure in brackets are the active surveillance survey cases, which are included in the total figure

(b) Northern Ireland.

Rolling 12 month period	Cattle population over 24 months of age <sup>1</sup>	Number of confirmed cases of BSE in the same period		Confirmed cases per Million head of cattle population			
		By date of confirmation <sup>2,5</sup>	By date of restriction	By date of confirmation <sup>2</sup>	By date of restriction <sup>3</sup>		
	Millions						
Jan97 – Dec97 <sup>4</sup>	0.769	28		23	36.4	29.9	
Jan98 – Dec98 <sup>4</sup>	0.803	18		18	22.4	22.4	
Jan99 – Dec99 <sup>4</sup>	0.783	6		7	7.7	8.9	
Jan00 – Dec00 <sup>4</sup>	0.767	22		20	28.7	26.1	
Jan01 – Dec01 <sup>4</sup>	0.776	123	(94)	33	158.5	(121.1)	42.5
Jan02 – Dec 02 <sup>4</sup>	0.775	103	(70)	28	132.9	(90.3)	36.1
Jan03 – Dec03 <sup>4</sup>	0.759	62	(51)	12	81.7	(67.2)	15.8
Jan03 – Dec04 <sup>4</sup>	0.762	34	(26)	8	44.6	(34.1)	10.5
Feb03 – Jan05	0.762	33	(25)	8	43.3	(32.8)	10.5
Mar04 – Feb05	0.762	31	(24)	6	40.7	(31.5)	7.9
Apr04 – Mar05	0.762	31	(25)	5	40.7	(32.8)	6.6
May04 – Apr05	0.762	28	(23)	5	36.7	(30.2)	6.6
Jun04 – May05	0.762	30	(25)	5	39.4	(32.8)	6.6
Jul04 – Jun05	0.770	30	(25)	5	39.4	(32.5)	6.6
Aug04 – Jul05	0.770	31	(26)	5	40.3	(33.8)	6.5
Sep04 – Aug05	0.770	29	(24)	5	37.7	(31.2)	6.5
Oct04 – Sep05	0.770	28	(23)	3	36.4	(29.9)	3.9
Nov04 – Oct05	0.770	25	(22)	3	32.5	(28.6)	3.9
Dec04 – Nov05	0.770	24	(22)	2	31.2	(28.6)	2.6
Jan05 – Dec05	0.770	23	(22)	0	29.9	(28.6)	0.0
Feb05 – Jan06	0.770	23	(23)	0	29.9	(29.9)	0.0
Mar05 – Feb06	0.770	22	(22)	0	28.6	(28.6)	0.0
Apr05 – Mar06	0.770	20	(20)	0	26.0	(26.0)	0.0
May05 – Apr06	0.770	21	(21)	0	27.3	(27.3)	0.0
Jun05 – May06	0.770	18	(18)	0	23.4	(23.4)	0.0
Jul05 – Jun06	0.770	17	(17)	0	22.1	(22.1)	0.0
Aug05 – Jul06	0.770	15	(15)	0	19.5	(19.5)	0.0
Sep05 – Aug06	0.770	14	(14)	0	18.2	(18.2)	0.0
Oct05 – Sep06	0.770	15	(15)	0	19.5	(19.5)	0.0
Nov05 – Oct06	0.770	16	(16)	0	20.8	(20.8)	0.0
Dec05 – Nov06	0.770	12	(12)	0	15.6	(15.6)	0.0
Jan06 – Dec06	0.770	10	(10)	0	13.0	(13.0)	0.0
Feb06 – Jan07	0.770	12	(12)	0	15.6	(15.6)	0.0
Mar06 – Feb07	0.770	13	(13)	0	16.9	(16.9)	0.0
Apr06 – Mar07	0.770	15	(15)	0	19.5	(19.5)	0.0
May06 – Apr07	0.770	14	(14)	0	18.2	(18.2)	0.0
Jun06 – May07	0.770	14	(14)	0	18.2	(18.2)	0.0
Jul06 – Jun07	0.770	14	(14)	0	18.2	(18.2)	0.0
Aug06 – Jul07	0.770	14	(14)	0	18.2	(18.2)	0.0
Sep06 – Aug07	0.770	14	(14)	0	18.2	(18.2)	0.0

As at 03 September 2007

Note:

'By date of confirmation' refers to the date disease was confirmed; regardless of the date the animal was first restricted as a suspect. 'By date of restriction' refers to the date an animal was first restricted as a suspect, regardless of when disease was ultimately confirmed.

<sup>1</sup>Cattle population figures based on June 1997, 1998, 1999 and 2000 census data, on an all holdings basis. Figures supplied by Stats (York) – same section that provides Eurostat data.

<sup>2</sup>Includes private submissions and survey cases which were not placed under restriction.

<sup>3</sup>Some cases placed under restriction during and since June 2002 are still awaiting diagnoses.

<sup>4</sup>This line shows averages for the whole year

<sup>5</sup>The figure in brackets are the active surveillance survey cases, which are included in the total figure

(c) United Kingdom

Rolling 12 month period	Cattle population over 24 months of age <sup>1</sup>	Number of confirmed cases of BSE in the same period		Confirmed cases per Million head of cattle population		
		By date of confirmation <sup>2,5</sup>	By date of restriction <sup>3</sup>	By date of confirmation <sup>2</sup>	By date of restriction <sup>3,6</sup>	
	Millions					
Jan97 – Dec97 <sup>4</sup>	5.504	4874	4332	885.5	787.1	
Jan98 – Dec98 <sup>4</sup>	5.498	3463	3196	629.9	581.3	
Jan99 – Dec99 <sup>4</sup>	5.502	2684	2261	487.8	410.9	
Jan00 – Dec00 <sup>4</sup>	5.309	1563	1331	294.4	250.7	
Jan01 – Dec01 <sup>4</sup>	5.086	1155	(355)	814	227.1 (69.8)	160.0
Jan02 – Dec02 <sup>4</sup>	4.987	1209	(668)	473	242.4 (133.9)	94.8
Jan03 – Dec03 <sup>4</sup>	4.975	670	(481)	187	134.7 (96.7)	37.6
Jan04 – Dec04 <sup>4</sup>	4.962	362	(261)	90	73.0 (52.6)	18.1
Feb04 – Jan05	4.962	349	(260)	83	70.3 (52.4)	16.7
Mar04 – Feb05	4.962	329	(248)	74	66.3 (50.0)	14.9
Apr04 – Mar05	4.962	316	(241)	68	63.7 (48.6)	13.7
May04 – Apr05	4.962	301	(235)	64	60.7 (47.4)	12.9
Jun04 – May05	4.962	295	(230)	61	59.5 (46.4)	12.3
Jul04 – Jun05	4.903	291	(227)	58	59.4 (46.3)	11.8
Aug04 – Jul05	4.903	275	(214)	56	56.1 (43.6)	11.4
Sep04 – Aug05	4.903	264	(209)	52	53.8 (42.6)	10.6
Oct04 – Sep05	4.903	248	(197)	46	50.6 (40.2)	9.4
Nov04 – Oct05	4.903	242	(194)	44	49.4 (39.6)	9.0
Dec04 – Nov05	4.903	231	(187)	43	47.1 (38.1)	8.8
Jan05 – Dec05	4.903	228	(187)	39	46.5 (38.1)	8.0
Feb05 – Jan06	4.903	225	(187)	35	45.9 (38.1)	7.1
Mar05 – Feb06	4.903	221	(185)	38	45.1 (37.7)	7.8
Apr05 – Mar06	4.903	202	(164)	37	41.2 (33.4)	7.5
May05 – Apr06	4.903	191	(154)	33	39.0 (31.4)	6.7
Jun05 – May06	4.903	178	(145)	32	36.3 (29.6)	6.5
Jul05 – Jun06	4.932	165	(135)	29	33.5 (27.4)	5.9
Aug05 – Jul06	4.932	162	(134)	27	32.8 (27.2)	5.5
Sep05 – Aug06	4.932	156	(129)	25	31.6 (26.2)	5.1
Oct05 – Sep06	4.932	157	(132)	25	31.8 (26.8)	5.1
Nov05 – Oct06	4.932	154	(128)	22	31.2 (26.0)	4.5
Dec05 – Nov06	4.932	134	(114)	18	27.2 (23.1)	3.6
Jan06 – Dec06	4.932	131	(113)	15	26.6 (22.9)	3.0
Feb06 – Jan07	4.932	116	(101)	16	23.5 (20.5)	3.2
Mar06 – Feb07	4.932	113	(98)	12	22.9 (19.9)	2.4
Apr06 – Mar07	4.932	107	(95)	10	21.7 (19.3)	2.0
May06 – Apr07	4.932	98	(88)	9	19.9 (17.8)	1.8
Jun06 – May07	4.932	92	(83)	9	18.7 (16.8)	1.8
Jul06 – Jun07	4.932	87	(79)	8	17.6 (16.0)	1.6
Aug06 – Jul07	4.932	87	(79)	8	17.6 (16.0)	1.6
Sep06 – Aug07	4.932	86	(77)	8	17.4 (15.6)	1.6

As at 03 September 2007

Note:

'By date of confirmation' refers to the date disease was confirmed; regardless of the date the animal was first restricted as a suspect. 'By date of restriction' refers to the date an animal was first restricted as a suspect, regardless of when disease was ultimately confirmed.

<sup>1</sup>Cattle population figures based on June 1997, 1998, 1999 and 2000 census data, on an all holdings basis. Figures supplied by Stats (York) – same section that provides Eurostat data.

<sup>2</sup>Includes private submissions and survey cases which were not placed under restriction.

<sup>3</sup>Some cases placed under restriction during and since June 2002 are still awaiting diagnoses.

<sup>4</sup>This line shows averages for the whole year

<sup>5</sup>The figure in brackets are the active surveillance survey cases, which are included in the total figure

## 1.10. BSE CASES SUSPECTED AND THEIR DIAGNOSIS

### 1(a) United Kingdom Summary

Year	Great Britain			Northern Ireland			UK Total
	Passive	Active	Total	Passive	Active	Total	Total
Pre 1988	727	0	727	0	0	0	727
1988	2180	4	2184	4	0	4	2188
1989	7133	4	7137	29	0	29	7166
1990	14181	0	14181	113	0	113	14294
1991	25026	6	25032	170	0	170	25202
1992	36680	2	36682	374	0	374	37056
1993	34370	0	34370	459	0	459	34829
1994	23943	2	23945	345	0	345	24290
1995	14301	1	14302	173	0	173	14475
1996	8013	3	8016	74	0	74	8090
1997	4310	3	4313	23	0	23	4336
1998	3180	1	3181	18	0	18	3199
1999	2256	20	2276	7	0	7	2283
2000	1311	44	1355	20	55	75	1430
2001	781	332	1113	34	40	74	1187
2002	445	594	1039	28	70	98	1137
2003	173	375	548	12	51	63	611
2004	82	227	309	8	26	34	343
2005	39	164	203	0	22	22	225
2006	15	89	104	0	10	10	114
2007	4	29	33	0	11	11	44
<b>Total</b>	<b>179150</b>	<b>1900</b>	<b>181050</b>	<b>1891</b>	<b>285</b>	<b>2176</b>	<b>183226</b>

**(b) Great Britain**

<b>YEAR</b>	<b>SUSPECTS RESTRICTED</b>	<b>RESTRICTIONS LIFTED DUE TO ALTERNATIVE DIAGNOSIS</b>	<b>SLAUGHTER NOT YET NOTIFIED</b>	<b>SUSPECTS KNOWN TO HAVE BEEN SLAUGHTERED</b>	<b>SLAUGHTERED SUSPECTS WITH OUTCOME PENDING</b>	<b>SLAUGHTERED SUSPECTS IN WHICH BSE NOT CONFIRMED</b>	<b>SLAUGHTERED SUSPECTS IN WHICH BSE CONFIRMED</b>	<b>OTHER BSE CONFIRMATIONS</b>
1988	2512	140	0	2372	0	192	2180	4
1989	8443	386	0	8057	0	924	7133	4
1990	17323	682	0	16641	0	2460	14181	0
1991	30003	982	0	29021	0	3995	25026	6
1992	44844	1690	0	43154	0	6474	36680	2
1993	42931	1847	0	41084	0	6714	34370	0
1994	30259	1551	0	28708	0	4765	23943	2
1995	17945	789	0	17156	0	2855	14301	1
1996	10697	547	0	10150	0	2137	8013	3
1997	5604	302	0	5302	0	992	4310	3
1998	4291	260	0	4031	0	853	3180	1
1999	2984	146	0	2838	0	582	2256	20
2000	1870	117	0	1753	0	442	1311	44
2001	1218	66	0	1152	0	371	781	332
2002	877	68	0	809	0	364	445	594
2003	456	43	0	413	0	240	173	375
2004	351	41	0	310	0	228	82	227
2005	186	30	0	156	0	117	39	164
2006	144	26	0	118	0	103	15	89
2007	56	8	0	48	3	41	4	29
Total <sup>1</sup>	222994	9721	0	213273	3	34849	178423	1900
Increase	5							

**(c) England**

<b>YEAR</b>	<b>SUSPECTS RESTRICTED</b>	<b>RESTRICTIONS LIFTED DUE TO ALTERNATIVE DIAGNOSIS</b>	<b>SLAUGHTER NOT YET NOTIFIED</b>	<b>SUSPECTS KNOWN TO HAVE BEEN SLAUGHTERED</b>	<b>SLAUGHTERED SUSPECTS WITH OUTCOME PENDING</b>	<b>SLAUGHTERED SUSPECTS IN WHICH BSE NOT CONFIRMED</b>	<b>SLAUGHTERED SUSPECTS IN WHICH BSE CONFIRMED</b>	<b>OTHER BSE CONFIRMATIONS</b>
1988	2282	118	0	2164	0	163	2001	3
1989	7520	322	0	7198	0	779	6419	3
1990	15187	551	0	14636	0	2025	12611	0
1991	26255	792	0	25463	0	3479	21984	6
1992	37881	1378	0	36503	0	5387	31116	1
1993	35560	1479	0	34081	0	5545	28536	0
1994	25536	1273	0	24263	0	3941	20322	1
1995	15403	661	0	14742	0	2435	12307	1
1996	9426	462	0	8964	0	1888	7076	2
1997	4964	251	0	4713	0	867	3846	3
1998	3828	217	0	3611	0	747	2865	0
1999	2716	124	0	2592	0	526	2066	16
2000	1657	96	0	1561	0	380	1181	39
2001	1060	51	0	1009	0	312	697	255
2002	739	52	0	687	0	300	387	430
2003	377	37	0	340	0	200	140	281
2004	286	28	0	258	0	189	69	160
2005	143	21	0	122	0	87	35	118
2006	116	20	0	96	0	85	11	67
2007	48	4	0	44	2	38	4	21
Total	190984	7937	0	183047	2	29373	153673	1407
Increase	5							

**(d) Wales**

YEAR	SUSPECTS RESTRICTED	RESTRICTIONS LIFTED DUE TO ALTERNATIVE DIAGNOSIS	SLAUGHTER NOT YET NOTIFIED	SUSPECTS KNOWN TO HAVE BEEN SLAUGHTERED	SLAUGHTERED SUSPECTS WITH OUTCOME PENDING	SLAUGHTERED SUSPECTS IN WHICH BSE NOT CONFIRMED	SLAUGHTERED SUSPECTS IN WHICH BSE CONFIRMED	OTHER BSE CONFIRMATIONS
1988	153	11	0	142	0	12	130	1
1989	618	31	0	587	0	80	507	0
1990	1417	70	0	1347	0	263	1084	0
1991	2736	119	0	2617	0	383	2234	0
1992	4779	219	0	4560	0	845	3715	0
1993	4636	212	0	4424	0	798	3626	0
1994	3002	165	0	2837	0	541	2296	0
1995	1666	77	0	1589	0	267	1322	0
1996	848	55	0	793	0	157	636	0
1997	442	31	0	411	0	88	323	0
1998	336	35	0	301	0	71	230	0
1999	206	13	0	193	0	40	153	4
2000	145	8	0	137	0	43	94	3
2001	97	6	0	91	0	32	59	50
2002	94	14	0	80	0	38	42	81
2003	54	4	0	50	0	22	28	58
2004	42	7	0	35	0	25	10	33
2005	24	7	0	17	0	14	3	25
2006	18	4	0	14	0	12	2	12
2007	5	4	0	1	0	1	0	4
Total	21318	1092	0	20226	0	3732	16494	271
Increase	0							

**(e) Scotland**

YEAR	SUSPECTS RESTRICTED	RESTRICTIONS LIFTED DUE TO ALTERNATIVE DIAGNOSIS	SLAUGHTER NOT YET NOTIFIED	SUSPECTS KNOWN TO HAVE BEEN SLAUGHTERED	SLAUGHTERED SUSPECTS WITH OUTCOME PENDING	SLAUGHTERED SUSPECTS IN WHICH BSE NOT CONFIRMED	SLAUGHTERED SUSPECTS IN WHICH BSE CONFIRMED	OTHER BSE CONFIRMATIONS
1988	77	11	0	66	0	17	49	0
1989	305	33	0	272	0	65	207	1
1990	719	61	0	658	0	172	486	0
1991	1012	71	0	941	0	133	808	0
1992	2184	93	0	2091	0	242	1849	1
1993	2735	156	0	2579	0	371	2208	0
1994	1721	113	0	1608	0	283	1325	1
1995	876	51	0	825	0	153	672	0
1996	423	30	0	393	0	92	301	1
1997	198	20	0	178	0	37	141	0
1998	127	8	0	119	0	35	85	1
1999	62	9	0	53	0	16	37	0
2000	68	13	0	55	0	19	36	2
2001	61	9	0	52	0	27	25	27
2002	44	2	0	42	0	26	16	83
2003	25	2	0	23	0	18	5	36
2004	23	6	0	17	0	14	3	34
2005	19	2	0	17	0	16	1	21
2006	10	2	0	8	0	6	2	10
2007	3	0	0	3	1	2	0	4
Total	10692	692	0	10000	1	1744	8256	222
Increase	0							



**(f) Northern Ireland (By date of restriction)**

YEAR	SUSPECTS RESTRICTED	RESTRICTIONS LIFTED DUE TO ALTERNATIVE DIAGNOSIS	SLAUGHTER NOT YET NOTIFIED	SUSPECTS KNOWN TO HAVE BEEN SLAUGHTERED	SLAUGHTERED SUSPECTS WITH OUTCOME PENDING	SLAUGHTERED SUSPECTS IN WHICH BSE NOT CONFIRMED	SLAUGHTERED SUSPECTS IN WHICH BSE CONFIRMED	OTHER BSE CONFIRMATIONS
1988	5	0	0	5	0	1	4	0
1989	64	20	0	44	0	15	29	0
1990	180	37	0	143	0	30	113	0
1991	237	27	0	210	0	40	170	0
1992	468	33	0	435	0	61	374	0
1993	585	27	0	558	0	99	459	0
1994	473	32	0	441	0	96	345	0
1995	239	14	0	225	0	52	173	0
1996	133	12	0	121	0	47	74	0
1997	47	6	0	41	0	18	23	0
1998	24	1	0	23	0	5	18	0
1999	13	0	0	13	0	6	7	0
2000	31	0	0	31	0	11	20	55
2001	71	3	0	68	0	34	34	40
2002	71	4	0	67	0	39	28	70
2003	62	6	0	56	0	44	12	51
2004	36	2	0	34	0	26	8	26
2005	19	4	0	15	0	15	0	22
2006	27	6	0	21	0	21	0	10
2007	11	1	1	9	0	9	0	11
Total	2796	235	1	2560	0	669	1891	285
Increase	2							

## Notes Relating to (a) to (e)

Year – Each row summarises the outcome for cases placed under restriction within each calendar year, commencing on 21 June 1988. Only the date of service of restriction will necessarily have occurred within the calendar year. For example, a case restricted in November may not be slaughtered until January of the next year. It may indeed appear to recover, have restrictions lifted, only to be reported again in another calendar year. Whenever such a case is reported in a later year, it retains its original reference number in order that it is not counted a second time. Consequently, such occurrences can lead to changes in data for earlier years for some considerable time afterwards.

Increase – the increases displayed are simply indicators of additions to the BSE database during the previous month. They are not accurate indicators of developments in the epidemic during the month. Graphics attached to this report at Appendix 1 and Appendix 2 reflects the development of the epidemic more accurately.

Slaughter Not Yet Notified – the number of restricted suspects for which notification of slaughter has not yet been received.

Slaughtered Suspects With Outcome Pending – the number of slaughtered animals for which there is as yet no result.

Other BSE Confirmations – animals in which BSE has been confirmed which were not placed under restriction before slaughter. This will include animals submitted post mortem by the owner for differential diagnosis and confirmed cases detected in post mortem surveys. This column also includes cases detected by active surveillance.

**Please Note.** Figures for confirmed cases in animals placed under report in 2002 are not directly comparable with the figures for prior years. The delay in confirmation of cases means that, inevitably, the total number of confirmed cases is not complete until some time during the following year. In addition, the average time taken to confirm cases may vary from year to year, as the work involved in reaching a diagnosis may conflict with other priority work.

## 1.11. BSE CASES BORN AFTER THE FEED BAN – TOTALS UP TO END AUGUST 2007

	1988	inc	1989	inc	1990	inc	1991	inc	1992	inc	1993	inc	1994	inc	1995	inc	1996	inc	1997	inc	1998	inc	1999	inc	2000	inc	2001	inc	2002	inc
January	n/a	n/a	1308	0	756	0	417	0	404	0	310	1	217	0	196	0	18	0	5	0	4	0	2	0	0	0	2	0	0	0
February	n/a	n/a	468	0	274	0	175	0	165	0	125	0	105	0	77	0	7	0	7	0	4	0	3	0	2	0	0	0	0	0
March	n/a	n/a	601	0	300	0	235	0	165	0	140	1	104	0	82	0	9	0	3	0	5	0	6	0	1	0	1	0	0	0
April	n/a	n/a	389	0	237	0	172	0	130	0	127	0	107	0	66	1	4	0	3	0	4	0	2	0	2	0	0	0	0	0
May	n/a	n/a	315	0	220	0	168	0	108	0	135	0	106	0	60	0	6	0	5	0	4	0	0	0	0	0	0	0	1	0
June	n/a	n/a	653	0	337	0	325	0	230	0	242	0	175	0	100	0	1	0	3	0	2	0	2	0	0	0	1	0	0	0
July	516	0	1121	0	601	0	600	0	415	0	396	0	274	0	132	0	5	0	4	0	4	0	1	0	1	0	0	0	0	0
August	2795	0	2212	0	913	0	815	0	541	0	437	1	324	0	125	0	4	0	3	0	6	0	1	0	1	0	0	0	1	0
September	3600	0	2433	0	862	0	788	0	493	0	391	0	257	0	87	0	6	0	4	0	3	0	4	0	0	0	1	0	0	0
October	2484	0	1567	0	574	0	480	0	386	0	290	0	219	0	73	0	5	0	0	0	3	0	0	0	1	1	1	0	0	0
November	1457	0	957	0	351	0	305	0	263	0	209	0	169	0	77	0	2	0	7	0	3	0	4	0	0	0	0	0	0	0
December	1128	0	724	0	324	0	300	0	236	0	206	0	135	0	36	0	3	0	1	0	0	0	1	0	0	0	0	0	0	0
<b>Totals</b>	11980	0	12748	0	5749	0	4780	0	3536	0	3008	3	2192	0	1111	1	70	0	45	0	42	0	26	0	8	1	6	0	2	0

<b>Total</b>	<b>45303</b>
<b>Increase over the previous month</b>	<b>5</b>

### (a) Great Britain

Note: Cases are assigned to month in which the animals were born, not the month in which symptoms first appeared or BSE was confirmed. The table covers cases born after the use of ruminant protein in ruminant feed was banned in July 1988. Where some months show a minus figure, this is due to updated information from the Animal Health Offices.

**(b) Northern Ireland**

	1989	Inc	1990	inc	1991	inc	1992	inc	1993	Inc	1994	Inc	1995	Inc	1996	Inc	1997	Inc	1998	inc	1999	inc	2000	inc	2001	Inc
January	23	0	11	0	7	0	8	0	3	0	12	1	9	0	13	0	0	0	2	0	0	0	0	0	0	0
February	9	0	8	0	7	0	5	0	5	0	8	0	14	0	7	0	0	0	0	0	0	0	1	0	0	0
March	13	0	7	0	1	0	4	0	3	0	9	0	16	0	3	0	0	0	0	0	1	0	1	0	0	0
April	7	0	3	0	3	0	4	0	7	0	5	0	19	0	2	0	0	0	0	0	0	0	0	0	1	0
May	1	0	8	0	2	0	1	0	6	0	4	0	10	0	2	0	0	0	1	0	2	0	1	0	0	0
June	4	0	3	0	1	0	4	0	2	0	4	0	10	0	0	0	1	0	1	0	0	0	0	0	0	0
July	1	0	1	0	2	0	2	0	4	0	4	0	9	0	2	0	1	0	0	0	0	0	0	0	0	0
August	3	0	5	0	4	0	1	0	4	1	6	1	3	0	0	0	0	0	0	0	0	0	0	0	0	0
September	3	0	4	0	5	0	1	0	8	0	13	0	10	0	1	0	2	0	0	0	0	0	0	0	0	0
October	17	0	9	0	10	0	5	0	11	0	19	0	11	0	0	0	0	0	1	0	0	0	0	0	0	0
November	8	0	7	0	0	0	6	0	14	0	8	0	9	0	1	0	2	1	0	0	0	0	0	0	0	0
December	13	0	4	0	8	0	4	0	6	0	13	0	9	0	0	0	1	0	1	0	1	0	0	0	0	0
<b>Totals</b>	102	0	70	0	50	0	45	0	73	0	105	0	129	0	31	0	7	0	6	0	4	0	3	0	1	0

<b>Total*</b>	<b>628</b>
<b>Increase over the previous month*</b>	<b>0</b>

Note: Cases are assigned to month in which the animals were born, not the month in which symptoms first appeared or BSE was confirmed. The table covers cases born after the use of ruminant protein in ruminant feed was banned in Northern Ireland on 11 January 1989.

\*total/increase includes 1 case confirmed in January 2007 and 1 case confirmed in April 2007 where DOB is currently under investigation and therefore not reflected in table above

**1.12.5 BSE IN THE UNITED KINGDOM: CONFIRMED CASES IN PASSIVE SURVEILLANCE ANIMALS RESTRICTED AND ACTIVE SURVEILLANCE ANIMALS SLAUGHTERED IN 2007 BY AGE (YEARS) AT CLINICAL ONSET - as at 03 September 2007**

Age (years)	Great Britain		Northern Ireland		UK Totals	
	Passive	Active	Passive	Active	Passive	Active
2<3	0	0	0	0	0	0
3<4	0	0	0	0	0	0
4<5	0	0	0	0	0	0
5<6	0	0	0	1	0	1
6<7	0	0	0	0	0	0
7<8	0	0	0	0	0	0
8<9	0	1	0	1	0	2
9<10	0	1	0	1	0	1
10<11	0	0	0	0	0	0
11<12	0	1	0	3	0	3
12<13	2	2	0	2	2	3
13<14	0	1	0	2	0	2
14<15	2	2	0	0	2	2
15<16	0	1	0	0	0	1
16<17	0	0	0	0	0	0
17<18	0	0	0	0	0	0
18<19	0	0	0	0	0	0
22<23	0	0	0	0	0	0
Total	4	9	0	10	4	15

The above table does not include animals where the date of birth is unknown or was estimated. At 03 September 2007, BSE had been confirmed in 4 passive surveillance animals restricted and 40 active surveillance animals slaughtered in the United Kingdom in January – August 2007.

Figures will change in subsequent months as additional data is added to the VLA database.

**CONFIRMED CASES IN ANIMALS FROM PASSIVE AND ACTIVE SURVEILLANCE  
IN 2007**

- as at 03 September 2007

<b>REGION</b>	<b>COUNTY</b>	<b>PASSIVE SURVEILLANCE</b>	<b>ACTIVE SURVEILLANCE</b>
<b>NORTH EAST</b>	Cleveland & Darlington	0	0
	Durham	0	1
	Northumberland	0	0
	Tyne & Wear	0	0
	<b>REGIONAL TOTAL</b>	<b>0</b>	<b>1</b>
<b>NORTH WEST</b>	Cheshire	0	0
	Cumbria	0	0
	Greater Manchester	0	1
	Lancashire	0	1
	Merseyside	0	0
	<b>REGIONAL TOTAL</b>	<b>0</b>	<b>2</b>
<b>EAST MIDLANDS</b>	Derbyshire	0	2
	Leicestershire & Rutland	0	1
	Lincolnshire excl North	0	0
	Northamptonshire	0	1
	Nottinghamshire	0	1
	<b>REGIONAL TOTAL</b>	<b>0</b>	<b>5</b>
<b>WEST MIDLANDS</b>	Herefordshire	0	0
	Shropshire	0	2
	Staffordshire	1	1
	Warwickshire	0	0
	West Midlands	0	0
	Worcestershire	0	0
	<b>REGIONAL TOTAL</b>	<b>1</b>	<b>3</b>
<b>YORKSHIRE &amp; THE HUMBER</b>	East Riding & Northern Lincolnshire	0	0
	North Yorkshire	0	0
	South Yorkshire	0	0
	West Yorkshire	0	0
	<b>REGIONAL TOTAL</b>	<b>0</b>	<b>0</b>
<b>SOUTH EAST</b>	Berkshire	0	0
	Buckinghamshire	0	0
	East Sussex	0	0
	Greater London	0	0
	Hampshire	0	0
	Isle of Wight	0	0
	Kent	0	1
	Oxfordshire	0	0
	Surrey	0	1
	West Sussex	0	0
<b>REGIONAL TOTAL</b>	<b>0</b>	<b>2</b>	

<b>EAST</b>	Bedford	0	0
	Cambridgeshire	0	1
	Essex	0	0
	Hertfordshire	0	0
	Norfolk	0	1
	Suffolk	0	0
	<b>REGIONAL TOTAL</b>	<b>0</b>	<b>2</b>
<b>SOUTH WEST</b>	Cornwall & Isles of Scilly	1	2
	Devon	0	1
	Dorset	1	0
	Gloucestershire excl South	0	1
	Northern Somerset & South		
	Gloucestershire	0	1
	Somerset excl North	1	1
	Wiltshire	0	0
<b>REGIONAL TOTAL</b>	<b>3</b>	<b>6</b>	
<b>WALES</b>	Carmarthenshire	0	1
	Ceredigion	0	0
	North-East Wales	0	0
	North-West Wales	0	1
	Pembrokeshire	0	1
	Powys	0	0
	South Wales	0	1
<b>WALES TOTAL</b>	<b>0</b>	<b>4</b>	
<b>SCOTLAND</b>	Argyll & Bute	0	0
	Ayrshire	0	0
	Clyde Valley	0	0
	Dumfries & Galloway	0	1
	East Central	0	0
	Eileanan an Iar	0	0
	Fife	0	0
	Highland	0	0
	Lothian	0	0
	North-East Scotland	0	2
	Orkney	0	0
	Scottish Borders	0	0
	Shetland	0	0
	Tayside	0	1
<b>SCOTLAND TOTAL</b>	<b>0</b>	<b>4</b>	
<b>GREAT BRITAIN TOTAL</b>		<b>4</b>	<b>29</b>
<b>NORTHERN IRELAND</b>	Antrim	0	2
	Armagh	0	2
	Down	0	1
	Fermanagh	0	0
	Londonderry	0	0
	Tyrone	0	6
	<b>NORTHERN IRELAND TOTAL</b>	<b>0</b>	<b>11</b>
<b>OVERALL TOTAL FOR UNITED KINGDOM</b>		<b>4</b>	<b>40</b>

### 1.14. BSE SUSPECT CASES BORN ON OR AFTER 01 JANUARY 1996.

#### (a) Great Britain

	TOTAL RESTRICTED	RESTRICTIONS LIFTED	SLAUGHTER NOT YET NOTIFIED	TOTAL SLAUGHTERED	BSE CONFIRMED	BSE NEGATIVE	DIAGNOSIS PENDING	SURVEY CASES BSE CONFIRMED
01.01.96 –	188	37	0	151	24	127	0	19
01.08.96 –	179	45	0	134	5	129	0	15
1997	287	55	0	232	14	218	0	31
1998	219	36	0	183	12	170	0	30
1999	161	30	0	130	6	124	1	20
2000	116	20	0	96	3	92	0	5
2001	56	12	0	43	0	43	1	6
2002	52	9	0	43	0	43	0	2
2003	29	7	0	22	0	22	0	0
2004	6	1	0	5	0	5	0	0
2005	1	0	0	1	0	1	0	0

As at 14 September 2007

#### (b) Northern Ireland

	TOTAL RESTRICTED	RESTRICTIONS LIFTED	SLAUGHTER NOT YET NOTIFIED	TOTAL SLAUGHTERED	BSE CONFIRMED	BSE NEGATIVE	DIAGNOSIS PENDING	SURVEY CASES BSE CONFIRMED
01.01.96 –	23	3	0	20	9	11	0	20
01.08.96 –	5	0	0	5	0	5	0	2
1997	39	5	0	34	1	33	0	6
1998	23	1	0	22	0	22	0	6
1999	23	3	0	20	0	20	0	4
2000	28	4	0	24	0	24	0	3
2001	14	3	0	11	0	11	0	1
2002	8	0	0	8	0	8	0	0
2003	4	1	0	3	0	3	0	0
2004	1	0	0	1	0	1	0	0
2005	2	1	0	1	0	1	0	0

As at 31 August 2007



## 2a. SCRAPIE CASES IN GREAT BRITAIN (INCLUDES CSFS CASES)

The confirmed cases year by year since the disease became notifiable are:

	1993	1994	1995	1996	1997	1998	1999	2000
Passive	328	235	254	460	508	499	598	568
Active	-	-	-	-	-	-	-	-
	2001	2002	2003 <sup>1</sup>	2004 <sup>2</sup>	2005 <sup>3</sup>	2006 <sup>4</sup>	2007	
Passive	295	404	379	307	270	171	35	
Active	-	26	67	29	43	86	37	

<sup>1</sup>As at 04 September 2007 there are 10 cases pending for January - December 2003

<sup>2</sup>As at 04 September 2007 there are 10 cases pending for January - December 2004

<sup>3</sup>As at 04 September 2007 there are 30 cases pending for January – December 2005

<sup>4</sup>As at 04 September 2007 there are 10 cases pending for January – December 2006

<sup>5</sup>As at 04 September 2007 there are 43 cases pending for January – August 2007

## 3. FELINE SPONGIFORM ENCEPHALOPATHY

A total of 89 cases of spongiform encephalopathy have been confirmed in domestic cats, the last one in 2001.

## 4. TRANSMISSIBLE SPONGIFORM ENCEPHALOPATHIES IN EXOTIC SPECIES

A total of 39 cases of spongiform encephalopathy have been confirmed in exotic species, the last one in 2007.

SPECIES	No.	DATES AFFECTED
Ankole cow	2	1991, 95
Bison	1	1996
Cheetah	5	1992 – 98
Eland	6	1989 – 95
Gemsbok	1	1987
Kudu	6	1989 – 92
Asian Leopard Cat <sup>1</sup>	1	2005
Lion	5	1998 - 2007
Nyala	1	1986
Ocelot	3	1994 – 99
Oryx	2	1989, 92
Puma	3	1992 – 95
Tiger	3	1995 – 99

<sup>1</sup>*Felis (Prionailurus) bengalensis*.

## SUMMARY OF CONFIRMED CASES OF OTHER TSEs IN GB

As at 03 September 2007

YEAR	FSE	TSE
	Cats	Other species
1988	0	2
1989	0	3
1990	12	1
1991	12	5
1992	10	6
1993	11	2
1994	16	1
1995	8	6
1996	6	2
1997	6	1
1998	4	3
1999	2	3
2000	1	1
2001	1	1
2002	0	0
2003	0	0
2004	0	0
2005	0	1
2006	0	0
2007	0	1
Total	89	39

\*\* includes a small number of cases not presented as BSE suspects but identified at post mortem examination.

## BARBS - BSE CASES BORN AFTER THE REINFORCED FEED BAN (1 AUGUST 1996) as at 03 September 2007

Year reported	Cases
2000	1
2001	11
2002	22
2003	38
2004	24
2005	27
2006	17
2007	9
<b>Total</b>	<b>149</b>