

# What are the Energy Information Regulations?

Energy Information Regulations implementing the EU Energy Labelling Framework Directive



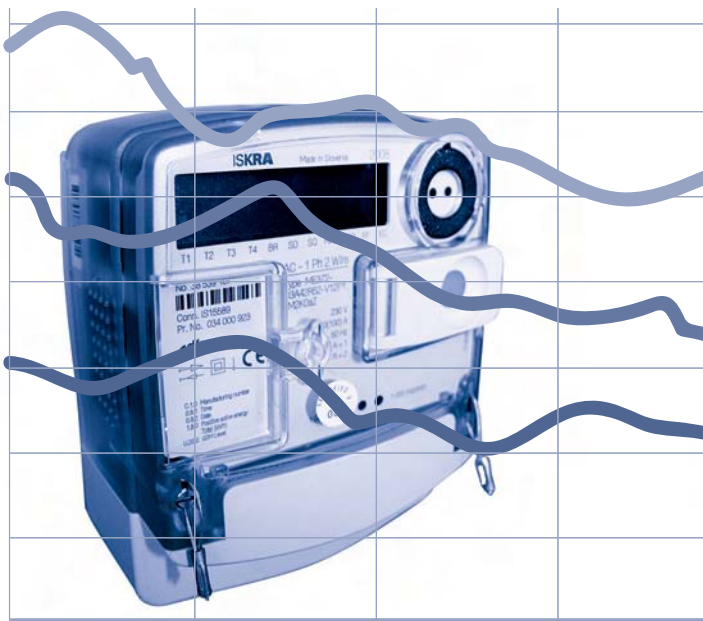
## The Energy Information Regulations

These regulations implement the European Energy Labelling Framework Directive. They are designed to help consumers make informed environmental purchasing decisions; to encourage manufacturers to design more efficient products to meet consumer demand; thus reducing the amount of energy consumed by household appliances.

## Scope of the Regulations

Many different types of household appliances are required to display an energy label. These labels provide information to the consumer about the amount of energy which a product consumes under particular operating conditions.

The information presented in the form of A-G rating allows the consumer to compare different products and to select those products that use the least amount of energy. The labels also contain other information about the product which is relevant to its operation and energy consumption.



The Energy Labelling Framework currently covers appliances which are electric mains operated whether or not they are sold or displayed for non-household use, in the following categories;

- Washing machines
- Tumble dryers
- Washer dryers
- Lamps (bulbs)
- Dishwashers
- Electric ovens
- Refrigerators and freezers
- Air conditioners

As new products come under the labelling framework, an up-to-date list can be found on our website.

## Supplier Responsibilities

Suppliers of regulated products must establish sufficient technical information sufficient in order for accuracy of the information contained on a label to be assessed.

| <b>Energy</b>  |         | <b>Washing machine</b> |
|--|---------|------------------------|
| Manufacturer   |         |                        |
| Model  |         |                        |
| <b>More efficient</b>  |         |                        |
|  |         |                        |
| <b>Less efficient</b>  |         |                        |
| Energy consumption<br>kWh/cycle<br><small>(based on standard test results for 60°C cotton cycle)</small> |         |                        |
| <small>Actual energy consumption will depend on how the appliance is used</small>                        |         |                        |
| Washing performance<br><small>A: higher G: lower</small>   |         |                        |
| Spin drying performance<br><small>A: higher G: lower</small><br>Spin speed (rpm)                         |         |                        |
| Capacity (cotton) kg   |         |                        |
| Water consumption  |         |                        |
| Noise<br>(dB(A) re 1 pW)   | Washing | Spinning               |
| <small>Further information is contained in product brochures</small>                                     |         |                        |
| <small>Norm EN 60456<br/>Washing machine label Directive 95/12/EC</small>                                |         |                        |

A template for refrigerator energy

The technical file must be readily available to the Enforcement Authority for a period ending 5 years after the last product has been manufactured.

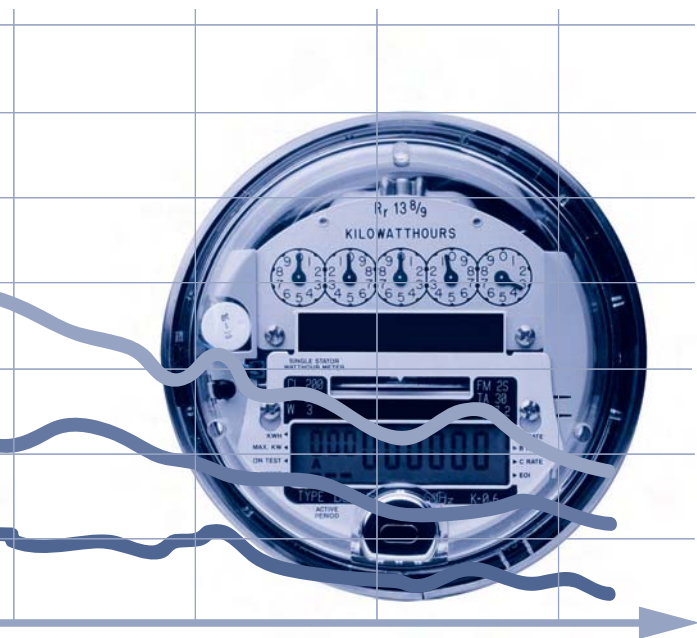
Suppliers also have a duty to supply, free of charge, the energy rating label to those businesses which distribute the product to end users. The information must be;

- In the relevant language
- Formatted as prescribed
- Accurate

The information relating to the category and efficiency class of the product must be determined in accordance with prescribed methods.

## Dealer Responsibility

The regulations also place duties upon those businesses which sell regulated products to the end user. Their duty is to attach a label to the product in such a way that it is clearly visible and not obscured.



Similar provisions apply to the availability of the energy information when the regulated product is supplied by a distance sales method.

The enforcement of the dealer's duties to display the labels is undertaken by the Local Authorities Trading Standards Department.

The enforcement of the supplier's responsibilities is undertaken by the National Measurement Office Enforcement Authority.

## National Measurement Office

### Enforcement Authority

Stanton Avenue  
Teddington  
Middlesex  
TW11 0JZ

+44 (0)20 8943 7227



More detailed information about the regulations is available on our website:

[www.bis.gov.uk/nmo/energylabelling](http://www.bis.gov.uk/nmo/energylabelling)

The Department for the Environment, Food and Rural Affairs (Defra) is the policy lead for the Energy Labelling of Energy Using Products Regulations in the UK:

[www.efficient-products.defra.gov.uk/eup](http://www.efficient-products.defra.gov.uk/eup)



Sponsored by:

