



Ministry of
JUSTICE

August 2007
England and Wales
Issue T3/2007

Statistics on Magistrates' Courts

STATISTICAL Bulletin

[CONTENTS](#)

- 1 [Key findings](#)
- 2 [Introduction](#)

[COMMENTARY](#)

- 3 [Adult charged and Youth Court Timeliness results](#)
- 4 [Indictable cases for all defendants](#)
- 5 [Youth defendants](#)

[TABLES](#)

- 6 [Timeliness standard](#)
- 12 [All indictable cases](#)
- 13 [Youth defendants](#)

[NOTES](#)

- 15 [Methodology](#)
- 16 [Quality and completeness of data](#)
- 19 [Further information](#)

TIME INTERVALS FOR CRIMINAL PROCEEDINGS IN MAGISTRATES' COURTS: JUNE 2007

By Farzana Bari

This bulletin presents the results from the June 2007 Time Intervals Survey. The survey reports on the time taken between stages of proceedings for defendants in completed criminal cases in magistrates' courts.

KEY FINDINGS

Timeliness standards: 83% of adult charged cases were completed within the standards and 90% of youth cases were completed within the standards.

Indictable/triable-either-way cases: The average time between offence and completion for indictable cases decreased from 115 days in June 2006 to 111 days in June 2007.

Youth defendants: Compared to June 2006, the average time from offence to completion for youth defendants decreased for indictable offences (99 to 92 days), summary non-motoring offences (90 to 85 days) and for summary motoring offences (94 to 93 days).

INTRODUCTION

1. Information on adult indictable/triable-either-way cases and charged summary cases is collected in one week of each quarter. Information on adult summonsed summary offences is additionally collected in the first and third quarters. Information on youth defendants in both indictable and summary cases is collected in four weeks of each quarter. Timeliness standard results are now published every quarter for both adult courts in charged cases and for all youth court cases (youth defendants only). Please see the notes section for more details. All references to indictable cases in this bulletin include triable either way cases.

2. This bulletin consists of three sections. This first section includes a description of the results from the June 2007 survey. The second section contains tables of detailed results from the latest survey and previous surveys, while the final section holds methodological notes and further information. Following this introduction the results are in three parts - the first presenting timeliness standard results, the second covering information on all defendants taken from the main survey week and the last covering information collected on youth defendants from a four week survey period - as follows:

- Timeliness standard results
- Indictable/triable-either-way cases
- Youth defendants

3. The results presented in this report are given per defendant. The June 2007 results for indictable cases are based on a sample of 7,178 defendants. The youth defendant results are based on a sample of 5,748 defendants in indictable/triable either way cases and 3,243 defendants in summary cases over a 4 week survey period. The notes section contains more information on sample sizes.

4. **Changes to the data collection of TIS** – With effect from June 2007, data for the adult one week Time Intervals Survey is collected through a new web based data collection tool, the HMCS Performance Database. However, the youth four week survey is still collected through the previous method (a static database). The change in the method in which adult TIS data is collected brings a number of improvements, including

- validating the data 'live' as it is entered
- collecting data at court level rather than clerkship level
- amending some of the data fields, following consultation, to reflect new monitoring needs.

As a result, any changes in the figures could be a result of changes to the data collection process therefore care should be taken when interpreting the figures.

SURVEYS

March

- Timeliness standard results
- All cases for all defendants
- Indictable cases for all defendants
- Summary cases for all defendants
- All cases for Youth defendants

June

- **Timeliness standard results**
- **Indictable cases for all defendants**
- **All cases for Youth defendants**

September

- Timeliness standard results
- All cases for all defendants
- Indictable cases for all defendants
- Summary cases for all defendants
- All cases for Youth defendants

December

- Timeliness standard results
- Indictable cases for all defendants
- All cases for Youth defendants
- Annual tables

Timeliness standard results are published every quarter.

Timeliness Standard Results

Standards for adult court cases are based on charged indictable/triable-either-way cases and charged summary cases. No cases initiated by summons are included. Standards for youth court cases (youth defendants only) are based on both charged and summonsed indictable/triable either way cases and charged and summonsed summary cases.

There are separate national standards for each of the three proceeding types. Areas are measured against achieving 80% or more cases within the standards.

Adult charged cases

Initial guilty plea – 59 days
Trials – 143 days
Committals – 101 days

Youth cases

Initial guilty plea – 59 days
Trials – 176 days
Committals – 101 days

England and Wales (June 2007)

- 83% of adult charged cases were completed within the standards.
- 90% of youth cases were completed within the standards.
- 86% of all adult charged and youth cases were completed within the standards.

Area standard results

[See Table 1 for details](#)

42 Areas

- 27 Areas managed to complete 80% or more of adult charged cases within the standards.
- 42 Areas managed to complete 80% or more of youth cases within the standards.
- 37 Areas managed to complete 80% or more of the overall number of adult charged and youth cases within the standards.

[See Table 1 for details](#)

24 Areas

- 17 Areas managed to complete 80% or more of adult charged cases within the standards.
- 24 Areas managed to complete 80% or more of youth cases within the standards.
- 23 Areas managed to complete 80% or more of the overall number of adult charged and youth cases within the standards.

Results for defendants in indictable (including triable either way) cases are published every quarter.

INDICTABLE/TRIABLE EITHER WAY CASES – ALL DEFENDANTS

Main point

The average time from offence to completion for all defendants in indictable cases decreased from 115 days in June 2006 to 111 days in June 2007.

Time Intervals

- The average time from offence to completion for indictable cases was 111 days, a decrease from 115 days in June 2006.
- The average time from offence to charge or laying of information was 56 days, unchanged from June 2006.
- The average time from charge or laying of information to first listing was 8 days, a decrease from 10 days in June 2006.
- The average time from first listing to completion was 47 days, a decrease from 50 days in June 2006.

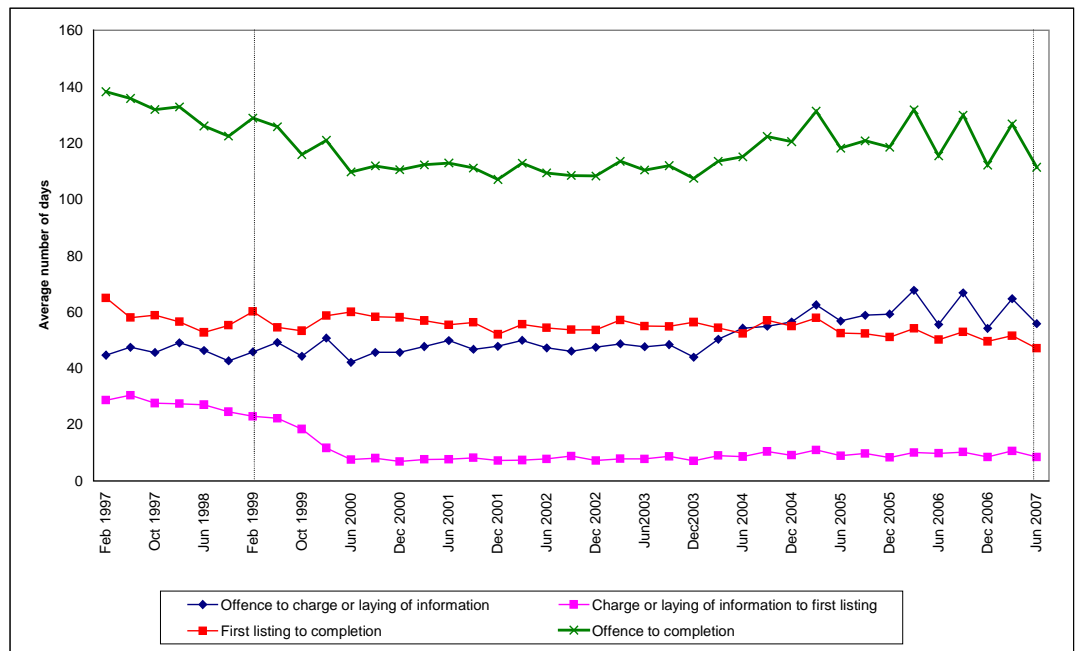
For further details about all defendants in indictable cases see Table 4

Adjournments

- There was an average of 2.1 adjournments for indictable/triable either way cases, a slight increase from 2.0 adjournments in June 2006.
- The average length of adjournments was 23 days, a decrease from 24 days in June 2006.
- 31 per cent of cases were completed at first listing, a slight increase from 30 per cent in June 2006.

The dashed vertical lines in the chart denotes the changes in survey methodology introduced with the February 1999 and June 2007 surveys

Figure 3: Average time by stage of proceedings – defendants in indictable/triable either way cases February 1997 to June 2007.



Youth defendant results are published every quarter.

YOUTH DEFENDANTS – ALL CASES

Main Points

The average time from offence to completion for youth defendants in all criminal cases decreased from 96 days in June 2006 to 90 days in June 2007.

Time Intervals

- For all youth defendant cases, the average time from offence to completion was 90 days, a decrease from 96 days in June 2006.
- The average time from offence to completion for youth defendants in indictable cases was 92 days in June 2007, a decrease from 99 days in June 2006.
- The average time from offence to completion for summary non-motoring cases was 85 days, a decrease from 90 days in June 2006.
- The average time from offence to completion for summary motoring cases was 93 days, a slight decrease from 94 days in June 2006.

For further details of the average time taken by stage of proceedings for indictable and summary cases see Table 5

Adjournments

- There was an average of 2.0 adjournments for youth defendants in all criminal cases, a slight decrease from 2.1 adjournments in June 2006.
- The average length of adjournments was 19 days, a slight decrease from 20 days in June 2006.
- 32 per cent of cases were completed at first listing, an increase from 30 per cent in June 2006.

Figure 6: Average time by stage of proceedings – youth defendants in all criminal cases, June 2007.

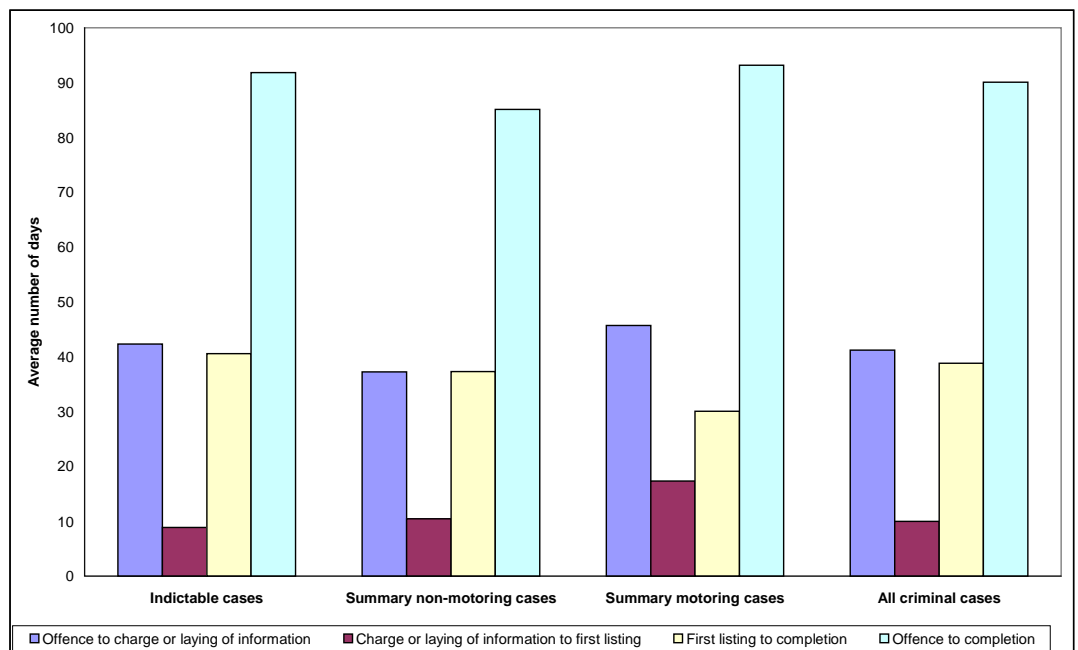


TABLE 1a: Timeliness standards (charge/laying of information to completion), by Area – Adult charged, Youth Court (youth defendants only) cases and overall, June 2007 (42 LCJB areas)

	Adult-charged			Youth			All		
	Cases within standard	Margin of error ⁽¹⁾	Sample size ⁽²⁾	Cases within standard	Margin of error ⁽¹⁾	Sample size ⁽²⁾	Cases within standard	Margin of error ⁽¹⁾	Sample size ⁽²⁾
	(Per cent)	(+/- per cent)	(Number of Defendants)	(Per cent)	(+/- per cent)	(Number of Defendants)	(Per cent)	(+/- per cent)	(Number of Defendants)
Avon and Somerset	76	5	294	82	5	205	78	4	499
Bedfordshire	71	13	52	84	10	58	78	8	110
Cambridgeshire	86	6	141	95	4	132	90	4	273
Cheshire	76	7	147	94	4	141	85	4	288
Cleveland	89	6	118	93	4	165	91	3	283
Cumbria	87	7	99	94	4	138	91	4	237
Derbyshire	73	8	135	91	5	150	82	5	285
Devon Cornwall	85	5	181	88	5	214	87	3	395
Dorset	69	8	135	90	6	100	78	6	235
Durham	81	6	164	89	5	152	85	4	316
Dyfed Powys	85	8	80	94	8	48	88	6	128
Essex	87	5	189	96	3	198	91	3	387
Gloucestershire	88	7	100	99	3	80	93	4	180
Greater Manchester	86	3	540	88	3	606	87	2	1,146
Gwent	75	11	75	85	7	125	81	6	200
Hampshire and Isle of Wight	86	4	341	88	4	272	87	3	613
Hertfordshire	81	7	145	86	7	119	83	5	264
Humberside	81	8	109	90	5	155	86	4	264
Kent	78	6	207	86	6	169	81	4	376
Lancashire	76	5	338	86	4	318	81	3	656
Leicestershire	68	9	113	83	6	168	77	5	281
Lincolnshire	82	7	127	83	10	66	82	6	193
London	87	2	1,538	90	2	1,233	88	1	2,771
Merseyside	85	4	342	88	4	299	86	3	641
Norfolk	91	5	131	97	3	129	94	3	260
North Wales	87	6	148	95	5	95	90	4	243
North Yorkshire	87	7	107	96	4	119	92	4	226
Northamptonshire	84	8	95	92	5	118	88	5	213
Northumbria	78	4	358	82	3	535	81	3	893
Nottinghamshire	82	5	224	96	6	68	85	4	292
South Wales	89	4	255	96	3	176	92	3	431
South Yorkshire	86	5	242	98	3	101	90	3	343
Staffordshire	71	8	147	84	6	189	78	5	336
Suffolk	87	6	121	94	5	108	90	4	229
Surrey	78	11	59	86	7	105	83	6	164
Sussex	74	6	235	89	4	255	82	4	490
Thames Valley	81	5	266	88	4	278	85	3	544
Warwickshire	91	7	79	96	6	67	93	4	146
West Mercia	75	6	250	89	5	190	81	4	440
West Midlands	92	2	820	95	2	471	93	1	1,291
West Yorkshire	80	4	488	89	3	469	84	2	957
Wiltshire	76	10	82	93	7	59	83	7	141
England and Wales	83	1	9,817	90	1	8,843	86	0	18,660

Notes

- (1) The margin of error is a measure of the precision of a result based on a sample survey. The true value is likely to fall within the range of the sample result +/- the margin of error. Please see the notes section for more information.
- (2) Results for Areas that have extremely small sample sizes, i.e. 30 defendants or less, have been excluded from the table and appear as dashed lines.

TABLE 1b: Timeliness standards (charge/laying of information to completion), by Area – Adult charged, Youth Court (youth defendants only) cases and overall, June 2007 (24 HMCS areas)

	Adult-charged			Youth			All		
	Cases within standard	Margin of error ⁽¹⁾	Sample size ⁽²⁾	Cases within standard	Margin of error ⁽¹⁾	Sample size ⁽²⁾	Cases within standard	Margin of error ⁽¹⁾	Sample size ⁽²⁾
	(Per cent)	(+/- per cent)	(Number of Defendants)	(Per cent)	(+/- per cent)	(Number of Defendants)	(Per cent)	(+/- per cent)	(Number of Defendants)
Avon & Somerset	76	5	294	82	5	205	78	4	499
Devon & Cornwall	85	5	181	88	5	214	87	3	395
Greater Manchester	86	3	540	88	3	606	87	2	1,146
Hampshire & Isle of Wight	86	4	341	88	4	272	87	3	613
Kent	78	6	207	86	6	169	81	4	376
North Wales	87	6	148	95	5	95	90	4	243
Thames Valley	81	5	266	88	4	278	85	3	544
Bedfordshire, Essex & Hertfordshire	83	4	386	91	3	375	87	2	761
Birmingham, Coventry, Solihull & Warwickshire	92	2	591	95	2	374	93	2	965
Black Country, Staffordshire & West Mercia	81	3	705	89	3	543	84	2	1,248
Cambridgeshire, Norfolk & Suffolk	88	3	393	95	2	369	91	2	762
Cheshire & Merseyside	82	4	489	90	3	440	86	2	929
Cleveland, Durham & Northumbria	81	3	640	86	2	852	84	2	1,492
Cumbria & Lancashire	79	4	437	88	3	456	84	2	893
Dorset, Gloucestershire & Wiltshire	77	5	317	94	3	239	84	3	556
Humber & South Yorkshire	85	4	351	93	3	256	88	3	607
Leicestershire, Lincolnshire & Northamptonshire	78	5	335	86	4	352	82	3	687
London (Central & South)	86	3	639	88	3	360	87	2	999
London (North & West)	88	2	899	91	2	873	89	1	1,772
Mid & West Wales	89	5	144	94	6	78	91	4	222
North & West Yorkshire	81	3	595	90	2	588	86	2	1,183
Nottingham & Derbyshire	78	4	359	93	4	218	84	3	577
South East Wales	83	5	266	91	4	271	87	3	537
Surrey & Sussex	74	5	294	88	3	360	82	3	654
England and Wales	83	1	9,817	90	1	8,843	86	0	18,660

Notes

- (1) The margin of error is a measure of the precision of a result based on a sample survey. The true value is likely to fall within the range of the sample result +/- the margin of error. Please see the notes section for more information.
- (2) Results for Areas that have extremely small sample sizes, i.e. 30 defendants or less, have been excluded from the table and appear as dashed lines.

TABLE 2a: Timeliness standards (charge to completion), by Area – Adult charged, June 2007 (42 LCJB areas)

	Initial Guilty Plea Standard = 59 days			Trials Standard = 143 days			Committals Standard = 101 days		
	Cases within standard	Margin of error ⁽¹⁾	Sample size ⁽²⁾	Cases within standard	Margin of error ⁽¹⁾	Sample size ⁽²⁾	Cases within standard	Margin of error ⁽¹⁾	Sample size ⁽²⁾
	(Per cent)	(+/- per cent)	(Number of Defendants)	(Per cent)	(+/- per cent)	(Number of Defendants)	(Per cent)	(+/- per cent)	(Number of Defendants)
Avon and Somerset	83	5	201	51	12	71	-	-	22
Bedfordshire	89	12	36	-	-	15	-	-	1
Cambridgeshire	89	7	90	69	18	32	-	-	19
Cheshire	83	8	92	63	14	51	-	-	4
Cleveland	86	9	76	94	10	33	-	-	9
Cumbria	92	7	64	-	-	25	-	-	10
Derbyshire	85	9	79	45	16	42	-	-	14
Devon Cornwall	86	6	141	-	-	24	-	-	16
Dorset	76	9	90	46	18	35	-	-	10
Durham	85	8	97	63	16	41	-	-	26
Dyfed Powys	96	6	57	-	-	23	-	-	0
Essex	90	6	121	63	18	32	97	7	36
Gloucestershire	91	8	67	-	-	27	-	-	6
Greater Manchester	91	3	333	65	9	113	97	4	94
Gwent	83	11	58	-	-	15	-	-	2
Hampshire and Isle of Wight	87	5	230	77	10	74	100	1	37
Hertfordshire	90	7	80	63	16	43	-	-	22
Humberside	84	9	81	-	-	22	-	-	6
Kent	90	5	144	40	16	43	-	-	20
Lancashire	80	6	194	62	10	107	100	1	37
Leicestershire	85	9	71	31	16	36	-	-	6
Lincolnshire	89	7	83	58	18	33	-	-	11
London	87	2	918	80	4	352	95	3	268
Merseyside	84	5	236	83	10	69	92	10	37
Norfolk	91	7	82	85	13	34	-	-	15
North Wales	89	7	105	-	-	24	-	-	19
North Yorkshire	95	6	77	-	-	22	-	-	8
Northamptonshire	79	11	57	-	-	26	-	-	12
Northumbria	81	5	240	64	11	89	-	-	29
Nottinghamshire	90	5	146	56	14	59	-	-	19
South Wales	88	5	152	84	10	63	98	6	40
South Yorkshire	89	5	167	78	11	59	-	-	16
Staffordshire	83	9	87	44	16	41	-	-	19
Suffolk	87	8	84	-	-	19	-	-	18
Surrey	-	-	30	-	-	10	-	-	19
Sussex	85	6	145	50	12	80	-	-	10
Thames Valley	87	5	171	64	12	72	-	-	23
Warwickshire	93	7	61	-	-	15	-	-	3
West Mercia	83	6	167	49	13	65	-	-	18
West Midlands	91	3	518	91	4	198	97	4	104
West Yorkshire	86	4	313	64	9	132	91	10	43
Wiltshire	78	11	65	-	-	12	-	-	5
England and Wales	87	1	6,306	68	2	2,378	94	1	1,133

Notes

- (1) The margin of error is a measure of the precision of a result based on a sample survey. The true value is likely to fall within the range of the sample result +/- the margin of error. Please see the notes section for more information.
- (2) Results for Areas that have extremely small sample sizes, i.e. 30 defendants or less, have been excluded from the table and appear as dashed lines.

TABLE 2b: Timeliness standards (charge to completion), by Area – Adult charged, June 2007 (24 HMCS areas)

	Initial Guilty Plea			Trials			Committals		
	Standard = 59 days			Standard = 143 days			Standard = 101 days		
	Cases within standard	Margin of error ⁽¹⁾	Sample size ⁽²⁾	Cases within standard	Margin of error ⁽¹⁾	Sample size ⁽²⁾	Cases within standard	Margin of error ⁽¹⁾	Sample size ⁽²⁾
	(Per cent)	(+/- per cent)	(Number of Defendants)	(Per cent)	(+/- per cent)	(Number of Defendants)	(Per cent)	(+/- per cent)	(Number of Defendants)
Avon & Somerset	83	5	201	51	12	71	-	-	22
Devon & Cornwall	86	6	141	-	-	24	-	-	16
Greater Manchester	91	3	333	65	9	113	97	4	94
Hampshire & Isle of Wight	87	5	230	77	10	74	100	1	37
Kent	90	5	144	40	16	43	-	-	20
North Wales	89	7	105	-	-	24	-	-	19
Thames Valley	87	5	171	64	12	72	-	-	23
Bedfordshire, Essex & Hertfordshire	90	4	237	58	11	90	92	8	59
Birmingham, Coventry, Solihull & Warwickshire	92	3	375	90	5	136	96	5	80
Black Country, Staffordshire & West Mercia	86	3	458	65	7	183	91	8	64
Cambridgeshire, Norfolk & Suffolk	89	4	256	78	9	85	98	5	52
Cheshire & Merseyside	84	4	328	74	8	120	93	9	41
Cleveland &, Durham & Northumbria	83	4	413	70	7	163	95	6	64
Cumbria & Lancashire	83	5	258	64	9	132	98	5	47
Dorset, Gloucestershire & Wiltshire	81	5	222	59	12	74	-	-	21
Humber & South Yorkshire	87	4	248	78	10	81	-	-	22
Leicestershire, Lincolnshire & Northamptonshire	85	5	211	57	10	95	-	-	29
London (Central & South)	86	4	389	74	8	133	97	3	117
London (North & West)	88	3	529	83	5	219	93	4	151
Mid & West Wales	95	5	94	69	17	35	-	-	15
North & West Yorkshire	87	3	390	64	8	154	88	10	51
Nottingham & Derbyshire	88	4	225	51	10	101	94	10	33
South East Wales	86	6	173	73	12	66	-	-	27
Surrey & Sussex	85	6	175	49	11	90	-	-	29
England and Wales	87	1	6,306	68	2	2,378	94	1	1,133

Notes

- (1) The margin of error is a measure of the precision of a result based on a sample survey. The true value is likely to fall within the range of the sample result +/- the margin of error. Please see the notes section for more information.
- (2) Results for Areas that have extremely small sample sizes, i.e. 30 defendants or less, have been excluded from the table and appear as dashed lines.

TABLE 3a: Timeliness standards (charge/laying of information to completion), by Area – Youth Court (Youth defendants only) cases, June 2007 (42 LCJB areas)

	Initial Guilty Plea			Trials			Committals		
	Standard = 59 days			Standard = 176 days			Standard = 101 days		
	Cases within standard	Margin of error ⁽¹⁾	Sample size ⁽²⁾	Cases within standard	Margin of error ⁽¹⁾	Sample size ⁽²⁾	Cases within standard	Margin of error ⁽¹⁾	Sample size ⁽²⁾
	(Per cent)	(+/- per cent)	(Number of Defendants)	(Per cent)	(+/- per cent)	(Number of Defendants)	(Per cent)	(+/- per cent)	(Number of Defendants)
Avon and Somerset	82	7	137	82	10	65	-	-	3
Bedfordshire	-	-	29	-	-	27	-	-	2
Cambridgeshire	95	5	99	94	10	32	-	-	1
Cheshire	94	5	98	95	8	41	-	-	2
Cleveland	91	5	122	98	6	43	-	-	0
Cumbria	93	5	113	-	-	25	-	-	0
Derbyshire	92	6	105	88	11	42	-	-	3
Devon Cornwall	88	5	155	88	9	58	-	-	1
Dorset	91	7	70	-	-	27	-	-	3
Durham	92	6	109	84	12	43	-	-	0
Dyfed Powys	100	1	34	-	-	11	-	-	3
Essex	98	3	135	93	8	57	-	-	6
Gloucestershire	98	5	46	-	-	29	-	-	5
Greater Manchester	89	3	363	85	5	210	94	10	33
Gwent	81	9	83	95	8	39	-	-	3
Hampshire and Isle of Wight	84	5	206	98	4	65	-	-	1
Hertfordshire	89	8	70	80	13	44	-	-	5
Humberside	90	6	107	93	9	42	-	-	6
Kent	89	6	116	80	12	49	-	-	4
Lancashire	84	5	209	89	7	96	-	-	13
Leicestershire	79	8	118	92	9	50	-	-	0
Lincolnshire	81	11	58	-	-	7	-	-	1
London	86	3	669	95	2	491	96	5	73
Merseyside	87	5	187	91	6	109	-	-	3
Norfolk	96	5	90	100	1	38	-	-	1
North Wales	93	7	71	-	-	24	-	-	0
North Yorkshire	96	5	89	-	-	28	-	-	2
Northamptonshire	93	7	67	91	9	45	-	-	6
Northumbria	79	4	392	91	5	141	-	-	2
Nottinghamshire	94	7	51	-	-	17	-	-	0
South Wales	93	6	96	100	1	75	-	-	5
South Yorkshire	97	5	70	-	-	27	-	-	4
Staffordshire	86	7	114	81	10	73	-	-	2
Suffolk	94	6	84	-	-	21	-	-	3
Surrey	89	9	53	83	11	52	-	-	0
Sussex	89	5	171	88	8	81	-	-	3
Thames Valley	86	6	173	91	6	94	-	-	11
Warwickshire	98	4	57	-	-	10	-	-	0
West Mercia	91	5	137	86	10	51	-	-	2
West Midlands	93	3	266	97	3	174	100	2	31
West Yorkshire	88	4	304	90	5	158	-	-	7
Wiltshire	94	9	35	-	-	20	-	-	4
England and Wales	88	1	5,758	91	1	2,831	95	3	254

Notes

- (1) The margin of error is a measure of the precision of a result based on a sample survey. The true value is likely to fall within the range of the sample result +/- the margin of error. Please see the notes section for more information.
- (2) Results for Areas that have extremely small sample sizes, i.e. 30 defendants or less, have been excluded from the table and appear as dashed lines.

TABLE 3b: Timeliness standards (charge/laying of information to completion), by Area – Youth Court (Youth defendants only) cases, June 2007 (24 HMCS areas)

	Initial Guilty Plea Standard = 59 days			Trials Standard = 176 days			Committals Standard = 101 days		
	Cases within standard	Margin of error ⁽¹⁾	Sample size ⁽²⁾	Cases within standard	Margin of error ⁽¹⁾	Sample size ⁽²⁾	Cases within standard	Margin of error ⁽¹⁾	Sample size ⁽²⁾
	(Per cent)	(+/- per cent)	(Number of Defendants)	(Per cent)	(+/- per cent)	(Number of Defendants)	(Per cent)	(+/- per cent)	(Number of Defendants)
Avon & Somerset	82	7	137	82	10	65	-	-	3
Devon & Cornwall	88	5	155	88	9	58	-	-	1
Greater Manchester	89	3	363	85	5	210	94	10	33
Hampshire & Isle of Wight	84	5	206	98	4	65	-	-	1
Kent	89	6	116	80	12	49	-	-	4
North Wales	93	7	71	-	-	24	-	-	0
Thames Valley	86	6	173	91	6	94	-	-	11
Bedfordshire, Essex & Hertfordshire	94	3	234	85	7	128	-	-	13
Birmingham, Coventry, Solihull & Warwickshire	95	3	219	95	4	129	-	-	26
Black Country, Staffordshire & West Mercia	89	3	355	88	5	179	-	-	9
Cambridgeshire, Norfolk & Suffolk	95	3	273	97	4	91	-	-	5
Cheshire & Merseyside	89	4	285	92	5	150	-	-	5
Cleveland &, Durham & Northumbria	83	3	623	91	4	227	-	-	2
Cumbria & Lancashire	87	4	322	91	6	121	-	-	13
Dorset, Gloucestershire & Wiltshire	94	4	151	92	7	76	-	-	12
Humber & South Yorkshire	93	4	177	96	6	69	-	-	10
Leicestershire, Lincolnshire & Northamptonshire	83	5	243	92	6	102	-	-	7
London (Central & South)	81	6	186	97	3	155	-	-	19
London (North & West)	88	3	483	94	3	336	96	6	54
Mid & West Wales	96	6	54	-	-	19	-	-	5
North & West Yorkshire	90	3	393	91	4	186	-	-	9
Nottingham & Derbyshire	93	4	156	92	8	59	-	-	3
South East Wales	87	6	159	98	3	106	-	-	6
Surrey & Sussex	89	4	224	86	6	133	-	-	3
England and Wales	88	1	5,758	91	1	2,831	95	3	254

Notes

- (1) The margin of error is a measure of the precision of a result based on a sample survey. The true value is likely to fall within the range of the sample result +/- the margin of error. Please see the notes section for more information.
- (2) Results for Areas that have extremely small sample sizes, i.e. 30 defendants or less, have been excluded from the table and appear as dashed lines.

TABLE 4: Defendants in indictable/triable either way⁽²⁾ cases, 1994 to June 2007

England and Wales	Average number of days from					Adjournments	
	Offence to charge or laying of information	Charge or laying of information to first listing	First listing to completion	Offence to completion	Percentage completed at first listing	Average number of adjournments	Average length of adjournments
	(Days)	(Days)	(Days)	(Days)	(Per cent)	(Number)	(Days)
1994 ⁽¹⁾	43	25	60	128	20	2.5	24
1995	43	26	61	130	20	2.6	24
1996	45	28	60	132	19	2.6	23
1997	46	29	60	135	20	2.6	23
1998	46	26	55	127	22	2.4	23
1999 ⁽¹⁾	46	21	56	124	23	2.3	24
2000	46	9	59	114	25	2.3	26
2001	48	8	55	111	28	2.1	26
2002	48	8	54	110	29	2.2	25
2003	47	8	56	111	30	2.2	26
2004	54	9	55	118	30	2.1	26
2005	59	10	54	122	31	2.1	26
2006	61	10	52	123	30	2.1	25
2003 March	49	8	57	113	29	2.1	27
2003 June	48	8	55	110	30	2.1	23
2003 September	48	9	55	112	30	2.1	26
2003 December	44	7	56	107	30	2.2	26
2004 March	50	9	54	114	30	2.1	25
2004 June	54	9	52	115	31	2.1	25
2004 September	55	10	57	122	31	2.1	27
2004 December	56	9	55	120	31	2.1	26
2005 March	62	11	58	131	31	2.1	27
2005 June	57	9	52	118	31	2.1	26
2005 September	59	10	52	121	31	2.1	25
2005 December	59	8	51	119	31	2.0	25
2006 March	68	10	54	132	31	2.1	26
2006 June ⁽³⁾	56	10	50	115	30	2.0	24
2006 September	67	10	53	130	31	2.1	25
2006 December	54	8	50	112	30	2.1	24
2007 March	65	11	51	127	29	2.2	23
2007 June ⁽¹⁾	56	8	47	111	31	2.1	23

(1) See paragraph 5 of the notes section for details of changes in survey methodology introduced with the February 1994, February 1999 and June 2007 surveys

(2) All references to indictable cases in this bulletin include triable either way cases.

(3) June 06 figure excludes data for North Yorkshire Area, as data was unavailable.

TABLE 5: Youth defendants in all criminal cases by offence type and stage of proceedings, 2003 to June 2007

England and Wales	Average number of days from:				Percentage completed at first listing (Per Cent)	Adjournments		Sample size (Number of Defendants)
	Offence to charge or laying of information	Charge or laying of information to first listing	First listing to completion	Offence to completion		Average number of adjournments	Average length of adjournments	
	(Days)	(Days)	(Days)	(Days)		(Number)	(Days)	
Indictable cases ⁽¹⁾								
2003	33	8	50	91	25	2.5	21	23,652
2004	37	8	51	97	26	2.4	21	22,948
2005	43	9	48	100	28	2.3	21	21,729
2006	45	9	46	100	28	2.3	20	22,637
2005 March	44	9	52	105	27	2.3	22	5,515
2005 June	43	9	47	98	27	2.3	20	5,560
2005 September	41	9	46	95	28	2.3	20	5,297
2005 December	45	9	47	101	28	2.3	20	5,357
2006 March	48	10	50	107	28	2.4	21	5,487
2006 June ⁽²⁾	45	9	45	99	28	2.2	20	5,510
2006 September	44	9	47	100	27	2.4	20	5,710
2006 December	42	9	43	95	27	2.3	19	5,930
2007 March	45	9	45	99	27	2.3	19	5,779
2007 June	42	9	41	92	30	2.2	19	5,748
Summary non-motoring cases								
2003	28	10	43	80	32	2.0	21	7,285
2004	32	10	44	85	33	2.1	21	8,006
2005	36	10	41	88	33	2.0	21	8,087
2006	36	11	43	90	32	2.0	21	8,393
2005 March	37	11	44	93	33	2.1	21	2,102
2005 June	37	11	39	87	33	1.9	21	1,951
2005 September	35	10	42	87	31	2.1	20	2,146
2005 December	37	10	40	87	34	1.9	21	1,888
2006 March	37	11	45	93	33	2.0	22	2,270
2006 June ⁽²⁾	37	11	43	90	32	2.1	21	1,918
2006 September	35	12	41	88	34	1.9	21	2,112
2006 December	36	10	43	88	30	2.2	20	2,093
2007 March	36	11	43	89	32	2.1	20	2,249
2007 June	37	10	37	85	33	2.0	19	2,473

TABLE 7: Youth defendants in all criminal cases by offence type and stage of proceedings, 2003 to June 2007 continued

England and Wales	Average number of days from:				Percentage completed at first listing (Per Cent)	Adjournments		Sample size (Number of Defendants)
	Offence to charge or laying of information	Charge or laying of information to first listing	First listing to completion	Offence to completion		Average number of adjournments	Average length of adjournments	
	(Days)	(Days)	(Days)	(Days)		(Number)	(Days)	
Summary motoring								
2003	57	22	31	109	40	1.5	21	6,221
2004	60	22	29	111	44	1.3	22	5,660
2005	59	21	28	108	47	1.3	22	4,558
2006	55	21	25	100	47	1.2	20	3,707
2005 March	69	23	28	119	48	1.3	22	1,261
2005 June	58	21	25	103	47	1.2	21	1,029
2005 September	53	20	29	102	47	1.3	23	1,252
2005 December	57	21	28	106	45	1.3	21	1,016
2006 March	63	21	25	109	49	1.2	21	1,012
2006 June ⁽²⁾	48	18	27	94	41	1.4	20	853
2006 September	54	22	24	100	51	1.1	21	964
2006 December	53	21	23	97	47	1.2	19	878
2007 March	54	20	26	100	47	1.4	19	840
2007 June	46	17	30	93	45	1.4	21	768
All criminal cases								
2003	36	11	46	92	29	2.2	21	37,158
2004	40	11	46	97	30	2.2	21	36,614
2005	44	11	44	98	31	2.1	21	34,374
2006	44	11	43	98	31	2.1	20	34,737
2005 March	46	11	47	104	31	2.1	22	8,878
2005 June	43	11	42	96	31	2.1	20	8,540
2005 September	41	11	42	94	32	2.1	20	8,695
2005 December	45	11	43	99	31	2.1	21	8,261
2006 March	47	11	46	104	32	2.1	21	8,769
2006 June ⁽²⁾	43	10	43	96	30	2.1	20	8,281
2006 September	43	11	43	97	31	2.1	20	8,786
2006 December	42	10	41	94	29	2.1	19	8,901
2007 March	44	10	43	96	30	2.2	20	8,868
2007 June ⁽¹⁾	41	10	39	90	32	2.0	19	8,989

(1) See paragraph 5 of the notes section for details of changes in survey methodology introduced with June 2007 survey.

(2) All references to indictable cases in this bulletin include triable either way cases.

(3) June 06 figure excludes data for North Yorkshire Area as data was unavailable

NOTES

Methodology

1. In 1999 and earlier years, clerkships provided details of all defendants in indictable/triable either way cases in magistrates' courts against whom proceedings were completed in selected sample weeks in February, June and October of each year. Information on summary offences was requested in the June one week sample only. From the February 1999 survey onwards information on youth defendants in all criminal cases is collected in a four week period ending at the same time as the selected main sample week of each survey. In addition, from February 1999 onwards each survey collects data on all persistent young offender cases completed since the end of the previous survey. Starting with the February 2000 survey there is now one survey in each quarter with two of these (first and third quarters) collecting the additional information on summary offences. The completed proceedings on which information is provided includes cases committed to the Crown Court and those dismissed or discharged as well as those in which a sentence was passed. For each defendant selected details of the case are recorded (for example, offence, type of proceedings and type of completion) together with the dates of certain stages of proceedings. The completion for offences committed to the crown court is up to the point where the case was committed.
2. The figures in this bulletin are based on defendants. Where a case involves more than one defendant, each defendant is considered individually.
3. In bulletins in 1998 and earlier years the date of charge or laying of information was simplified to the date of charge or summons. From 1999 onwards bulletins use the exact definition of the date requested in the survey – the date of charge or laying of information. Therefore the interval from offence to charge or summons previously reported on is now defined as the interval from offence to charge or laying of information. Similarly the interval from charge or summons to first listing has been re-defined as the interval from charge or laying of information to first listing. As the date used in the calculations is exactly the same this change has not affected results.
4. Due to seasonal variation in the data collected at different times of the year, this bulletin only makes comparisons with data from the same sample period in previous years.
5. **Changes to the data collection of TIS** – With effect from June 2007, data for the adult one week Time Intervals Survey is collected through a new web based data

collection tool, the HMCS Performance Database. However, the youth four week survey is still collected through the previous method (a static database). The change in the method in which adult TIS data is collected brings a number of improvements, including

- validating the data 'live' as it is entered
- collecting data at court level rather than clerkship level
- amending some of the data fields, following consultation, to reflect new monitoring needs.

As a result, any changes in the figures could be a result of changes to the data collection process therefore care should be taken when interpreting the figures.

Quality and completeness of the data

6. Youth defendant data is sent to Performance Directorate at Her Majesty's Court Service by the court. Checks on the consistency of the data are made (for example that dates are in chronological order) and returns found to be in error are returned for correction. In addition any records which appear implausible are referred back to the court for confirmation. Adult defendant data is collected through 'one performance truth' where errors are corrected at data entry stage.
7. Starting with the February 1993 survey there have been several changes in recording procedures, which will have led to small discontinuities in the data series. These are signified by vertical separations in the charts. They are as follows:

February 1993

- Cases adjourned sine die are not counted until finally disposed of.
- From the February 1993 survey to the October 1998 survey cases were excluded which took more than one year to complete (from either charge or laying of information to first listing, or first listing to completion) for reasons which appeared to be beyond the control of the court, for example, where the defendant absconded. It is estimated that this change reduced the average interval from offence to completion by about 7.5 days for indictable offences in 1992, the last year before the change. Almost all this difference was due to a lower average time from first listing to completion.

February 1994

- Records where the defendant was charged or had information laid against them over ten years after the offence occurred have been excluded from the February 1994 survey onwards. This affected very few defendants but it is estimated that it would have reduced the average time from offence to completion by 1.5 days in 1992 for

indictable offences. Virtually all this change was in the offence to charge or laying of information interval rather than the period after charge or laying of information.

February 1999

- The rules that previously excluded longer cases (lasting over a year from either charge or laying of information to first listing, or first listing to completion) were not applied for surveys from February 1999 onwards. No longer applying the rules which excluded longer cases increased the average time from offence to completion for defendants in indictable cases in 1999 to 124 days from 120 days and the average time from first listing to completion to 56 days from 52 days. Unless stated, all results in this bulletin are on the new basis. The rules were removed in order to ensure this aspect of the survey is compatible with the statistics on delay used for monitoring the Government's pledge to halve the time from arrest to sentence for persistent young offenders. These are based on data from the Police National Computer not the Time Intervals Survey.
8. In February 1999 new data collection software was introduced following testing in 6 clerkships in the October 1998 survey. For the October 1999 survey a second version of the software was introduced which performed additional validations on the data and also produced local reports from the data entered. A third version of the software, with additional validations, was introduced for the March 2002 survey. Guidance on the collection of data is included in the magistrates' courts management information system good practice guide (available from Waheed Balogun at the address below).
 9. Figures in the text and tables may not sum exactly to totals because the numbers in this bulletin have been rounded independently of each other.
 10. In the past some Local Justice Areas (LJAs) and clerkships have sometimes been unable to participate in the collection of data due to local circumstances. The table on page 18 gives the estimated completeness of the data and the number of defendants in the June 1994 to June 2007 samples of criminal proceedings. The term completeness in this table refers to the proportion of clerkships supplying data. It does not refer to the proportion of all cases completed during each sample week on which time intervals data was not returned by clerkships. This would almost certainly be lower. For this reason, and short term and seasonal variation, the figures here for number of defendants are unlikely to provide a reliable indicator of the changes in magistrates' courts caseload.
 11. North Yorkshire data was unavailable for the June 06 survey, therefore all England

and Wales figures for June 06 and 2006 annual figures were calculated without North Yorkshire data.

Confidence Intervals and Margins of error

12. Timeliness in magistrates' courts is measured using data from a sample of the total number of defendants. The sample provides one estimate of the average time taken and different samples would produce different average times. The only way to obtain the 'true' average time for all defendants would be to sample every defendant. However we can calculate the margin of error associated with the sample and use it to estimate the likely range within which the 'true' average time falls. This range is the 95% confidence interval which lies between the sample average +/- the margin of error. The size of the margin of error and width of the confidence interval is dependant on the sample size; the larger the sample size the narrower the confidence interval, and hence the more precise the sample results can be considered to be.

Proportion of clerkships/courthouses making returns and sample sizes 1994 to 2007 June surveys			
Collection week	Proportion of clerkships Making returns (per cent)	Proportion of courthouses Marking returns (per cent)	Number of defendants (sample size)
June 1994	98.2	-	7,637
June 1995	100.0	-	7,816
June 1996	100.0	-	7,400
June 1997	100.0	-	8,097
June 1998	100.0	-	8,048
June 1999 ⁽¹⁾	100.0	-	8,214
June 2000	98.8	-	7,225
June 2001	99.4	-	7,125
June 2002	100.0	-	8,251
June 2003	100.0	-	7,986
June 2004	100.0	-	5,668
June 2005	96.7	-	6,840
June 2006	98.8	-	6,835
June 2007 ⁽³⁾	98.0	98.2	7,178

(1) The sample sizes for February 1999 onwards are from the one week sample only. Table 4 shows Youth defendant sample sizes in the four week survey.
(2) The number of defendants is based on indictable/triable-either-way cases only
(3) In the June 2007 all adult defendant data was collected through a new data collection system (OPT)

Previous bulletin

13. Statistical Bulletins containing data from Time Intervals Surveys up to and including October 1993 were produced by the Home Office's Research and Statistics Directorate. The Ministry of Justice (formerly the Department for Constitutional Affairs) took over responsibility for the surveys from 1 January 1994. When the Home Office conducted the survey the data was collected directly from Petty Sessional Areas (PSAs) rather than clerkships/courts as currently.

Further Information

This bulletin has been prepared by the Economics and Statistics Division in Ministry of Justice and Performance Directorate in Her Majesty's Court Service. Comments on this publication or suggestions would be welcomed. If you have any enquiries about figures in this bulletin or wish to request further analysis of the data (a fee may be charged) contact Farzana Bari at the address below:

Farzana Bari
Economics and Statistics Division
Ministry of Justice
5.03 5th Floor
Selborne House
54–60 Victoria Street
London SW1E 6QW
Tel: 020 7210 8824
email: Farzana.Bari@justice.gsi.gov.uk

For further copies of this bulletin contact Waheed Balogun at the following address:

Waheed Balogun
Performance Directorate
Her Majesty's Court Service
4th Floor
Steel House
11 Tothill Street
London SW1H 9LJ
Tel: 020 7210 0397
email: Waheed.Balogun@hmcourts-service.gsi.gov.uk

Press enquiries should be addressed to:

Press Office
Ministry of Justice
9th Floor
Selborne House
54–60 Victoria Street
London SW1E 6QW
Tel: 020 7210 8512 / 8513
email: press.office@justice.gsi.gov.uk