



Ministry of  
**JUSTICE**

**NOMS** National Offender  
Management Service  
Working together to reduce re-offending

# Population in Custody MONTHLY TABLES

November 2007  
England and Wales

# Population in custody November 2007 - Key points

## RDS NOMS

### *Population in custody*

- The population in custody on 30 November 2007 was 81,883, 2 per cent more than a year earlier. The population in prisons was 81,227, in police cells it was 177, in Secure Training Centres (STCs) it was 254, and in Secure Children's Homes (SCHs) it was 225.

### *Population in prison*

- The male prison population increased by 2 per cent to 76,715 and the female prison population increased 1 per cent to 4,512.
- The remand population in prison decreased by 2 per cent to 12,879 in November 2007 compared to November 2006. Within this total, the untried population decreased 1 per cent to 8,144 and the convicted unsentenced population decreased 3 per cent to 4,735.
- Amongst the remand population the largest percentage decreases since November 2006 were seen in theft and handling, motoring offences and other offences down by 18, 15 and 11 per cent respectively. Increases were seen in drug offences and fraud and forgery, up 19 and 16 per cent respectively.
- There were 66,818 sentenced<sup>(1)</sup> prisoners at 30 November 2007, an increase of 3 per cent from a year earlier. The largest proportionate increase since November 2006 was for those serving indeterminate sentences (Life sentences and Indeterminate sentences for Public Protection) which increased by 25 per cent.
- Amongst the sentenced<sup>(1)</sup> prison population violence against the person, sexual offences and other offences saw the largest percentage increases all three up by 8 per cent from November 2006. The number of people serving sentences for motoring offences saw the largest percentage decrease since November 2006, down by 19 per cent.
- The adult population in prison was 69,328 at 30 November 2007, an increase of 2 per cent from a year earlier. Over the same time period the young adults also saw an increase of 4 per cent to 9,542 and the 15 to 17 year olds saw a decrease of 6 per cent to 2,357.
- The prison population was 113 per cent of the 'In Use CNA' (71,995) at 30 November 2007.

---

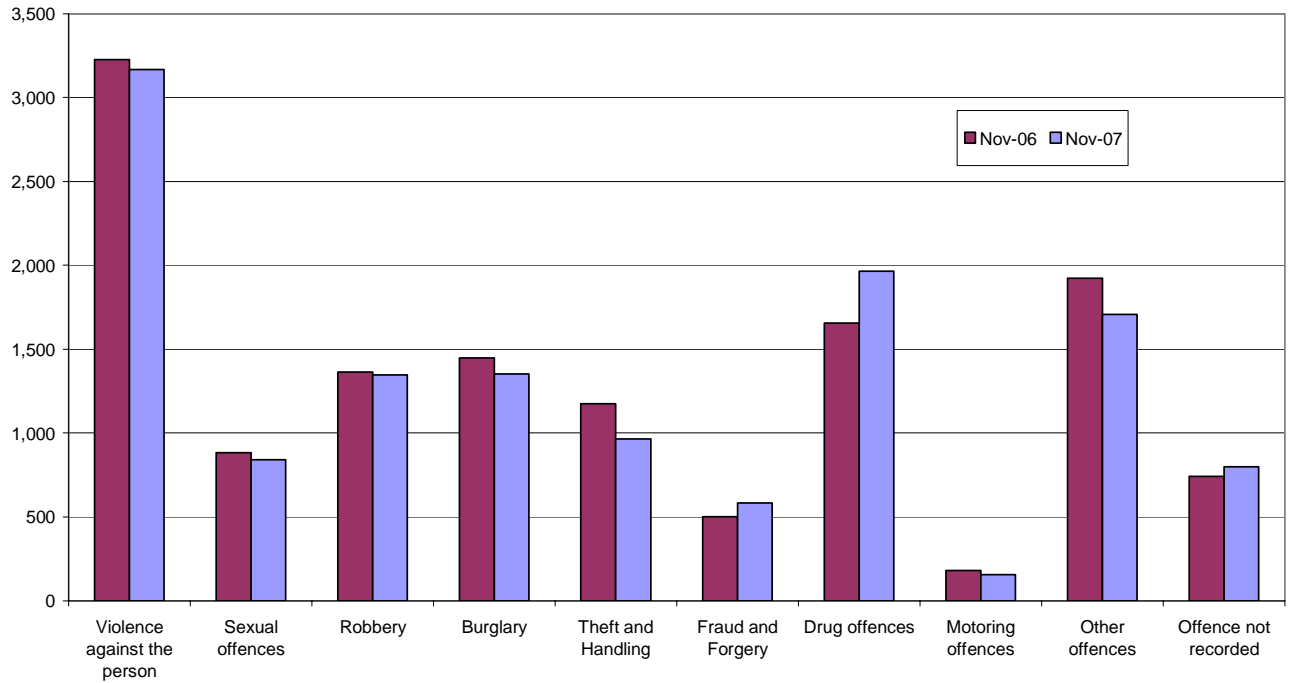
(1) Includes recalls and excludes fine defaulters

### **For further queries:**

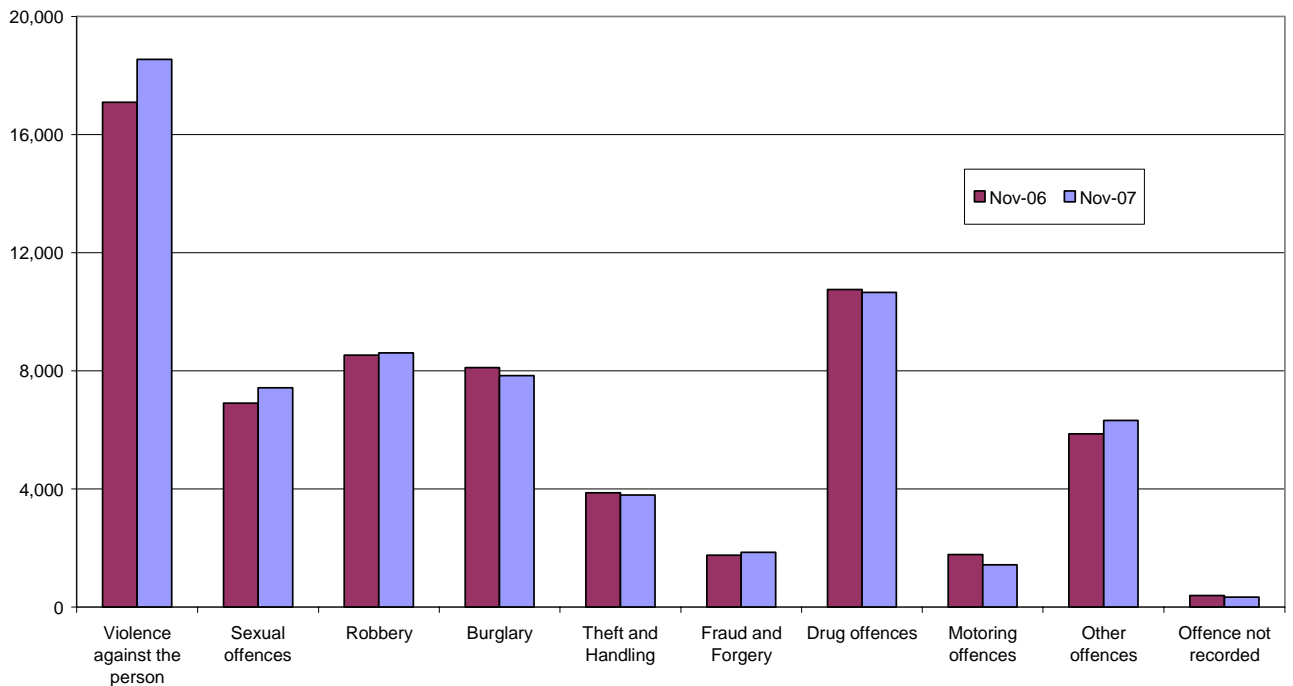
E-mail: [esd@justice.gsi.gov.uk](mailto:esd@justice.gsi.gov.uk)

Press enquiries - Press Office 020 7210 0638

Remand population by offence group



Immediate custodial sentenced population by offence group



## NOTES

### Data sources and quality

The data presented in this brief are drawn from the prison administrative IT systems. Although care is taken when processing and analysing the returns, the detail collected is subject to the inaccuracies inherent in any large-scale recording system. While the figures shown have been checked as far as practicable, they must be approximate and not necessarily accurate to the last whole number shown in the tables. They are fit to be used for purposes of looking at trends and for comparing the relative magnitude of components.

We are currently undertaking a programme of work to audit the quality of our data, and to identify priorities for improvements. This may lead to changes in future tables.

The prison population information has been drawn from two prison sources. The first source is the routine provision by prison establishments of records of the numbers of persons held in custody at the end of each month, broadly subdivided according to age, sex, custody type and sentence length. The records are collated and processed centrally, to produce the main estimates of the end of month population presented. The second source is the electronically held details for individual inmates such as date of birth, sex, religion, ethnic origin, custody type, offence, and reception and discharge dates and, for sentenced prisoners, sentence length. These data are collected on a central computer database and are used to produce the analyses by offence group and individual year of age. They form the basis of detailed population breakdowns, supplementing the aggregates derived from the first source, to which they are scaled for consistency. A new more detailed method of scaling this information was developed in 2004.

Because the detailed population breakdowns have been scaled and also rounded to the nearest whole number, individual components may not sum to the totals.

Information on the population in STCs and SCHs has been supplied by the Youth Justice Board.

All figures are provisional pending publication of the annual Offender Management Caseload Statistics.

### Definitions

Population in custody - this includes those held in prison establishments, police cells under Operation Safeguard, secure training centres (STCs) and secure children's homes (SCHs). This is a change to previous outputs (notably Prison Population Monthly Brief and Prison Statistics England and Wales) where the reference to 'population in custody' just covered those held in prison establishments and police cells. All coverage is for England and Wales.

Population in prison – this includes those held in prisons in England and Wales, including the three removal centres of Dover, Haslar and Lindholme.

Sentenced population – this includes those sentenced to an immediate custodial sentence and fine defaulters.

Immediate custodial sentence – this does not include fine defaulters.

Adult prisoners – these are prisoners aged 21 years and over.

Young adults – these are prisoners aged 18 to 20, but including 21 year old prisoners who were aged 20 or under at conviction who have not been reclassified as part of the adult population

Indeterminate sentences – these cover life sentences and indeterminate sentences for public protection (IPP).

**Table 1: Population in custody: by type of custody and sex**

|   | Nov-06        |              |               | Nov-07        |              |               | Percentage change 2006 to 2007 |           |            |
|---|---------------|--------------|---------------|---------------|--------------|---------------|--------------------------------|-----------|------------|
|   | Males         | Females      | Total         | Males         | Females      | Total         | Males                          | Females   | Total      |
|   |               |              |               |               |              |               |                                |           |            |
| <b>All population in custody, of which</b>          | <b>75,911</b> | <b>4,639</b> | <b>80,550</b> | <b>77,211</b> | <b>4,672</b> | <b>81,883</b> | <b>2</b>                       | <b>1</b>  | <b>2</b>   |
| Prisons   | 75,358        | 4,477        | 79,835        | 76,715        | 4,512        | 81,227        | 2                              | 1         | 2          |
| Police cells  | 206           | 0            | 206           | 177           | 0            | 177           | *                              | *         | *          |
| SCHs  | 186           | 39           | 225           | 179           | 46           | 225           | -4                             | *         | 0          |
| STCs  | 161           | 123          | 284           | 140           | 114          | 254           | -13                            | -7        | -11        |
| <b>All population in prison, of which</b>           | <b>75,358</b> | <b>4,477</b> | <b>79,835</b> | <b>76,715</b> | <b>4,512</b> | <b>81,227</b> | <b>2</b>                       | <b>1</b>  | <b>2</b>   |
| <b>Remand</b>                                       | <b>12,183</b> | <b>916</b>   | <b>13,099</b> | <b>11,939</b> | <b>940</b>   | <b>12,879</b> | <b>-2</b>                      | <b>3</b>  | <b>-2</b>  |
| untried   | 7,635         | 566          | 8,201         | 7,549         | 595          | 8,144         | -1                             | 5         | -1         |
| convicted unsentenced                               | 4,548         | 350          | 4,898         | 4,390         | 345          | 4,735         | -3                             | -1        | -3         |
| <b>Under sentence</b>                               | <b>61,660</b> | <b>3,505</b> | <b>65,165</b> | <b>63,418</b> | <b>3,494</b> | <b>66,912</b> | <b>3</b>                       | <b>0</b>  | <b>3</b>   |
| Fine defaulter                                      | 82            | 5            | 87            | 85            | 9            | 94            | 4                              | *         | 8          |
| Less than or equal to 6 months                      | 5,106         | 512          | 5,618         | 5,055         | 526          | 5,581         | -1                             | 3         | -1         |
| Greater than 6 months to less than 12 months        | 2,362         | 266          | 2,628         | 2,476         | 240          | 2,716         | 5                              | -10       | 3          |
| 12 months to less than 4 years                      | 21,204        | 1,256        | 22,460        | 21,967        | 1,271        | 23,238        | 4                              | 1         | 3          |
| 4 years or more (excluding Indeterminate sentences) | 24,979        | 1,215        | 26,194        | 23,913        | 1,125        | 25,038        | -4                             | -7        | -4         |
| Indeterminate sentences                             | 7,927         | 251          | 8,178         | 9,922         | 323          | 10,245        | 25                             | 29        | 25         |
| <b>Non-criminal prisoners</b>                       | <b>1,515</b>  | <b>56</b>    | <b>1,571</b>  | <b>1,358</b>  | <b>78</b>    | <b>1,436</b>  | <b>-10</b>                     | <b>39</b> | <b>-9</b>  |
| <b>All adult population in prison, of which</b>     | <b>64,126</b> | <b>4,001</b> | <b>68,127</b> | <b>65,315</b> | <b>4,013</b> | <b>69,328</b> | <b>2</b>                       | <b>0</b>  | <b>2</b>   |
| <b>Remand</b>                                       | <b>9,609</b>  | <b>797</b>   | <b>10,406</b> | <b>9,592</b>  | <b>818</b>   | <b>10,410</b> | <b>0</b>                       | <b>3</b>  | <b>0</b>   |
| untried   | 6,052         | 493          | 6,545         | 6,151         | 518          | 6,669         | 2                              | 5         | 2          |
| convicted unsentenced                               | 3,557         | 304          | 3,861         | 3,441         | 300          | 3,741         | -3                             | -1        | -3         |
| <b>Under sentence</b>                               | <b>53,121</b> | <b>3,150</b> | <b>56,271</b> | <b>54,467</b> | <b>3,119</b> | <b>57,586</b> | <b>3</b>                       | <b>-1</b> | <b>2</b>   |
| Fine defaulter                                      | 79            | 5            | 84            | 79            | 9            | 88            | 0                              | *         | 5          |
| Less than or equal to 6 months                      | 3,865         | 431          | 4,296         | 3,725         | 446          | 4,171         | -4                             | 3         | -3         |
| Greater than 6 months to less than 12 months        | 1,716         | 232          | 1,948         | 1,840         | 211          | 2,051         | 7                              | -9        | 5          |
| 12 months to less than 4 years                      | 16,713        | 1,097        | 17,810        | 17,374        | 1,102        | 18,476        | 4                              | 0         | 4          |
| 4 years or more (excluding Indeterminate sentences) | 23,298        | 1,150        | 24,448        | 22,282        | 1,048        | 23,330        | -4                             | -9        | -5         |
| Indeterminate sentences                             | 7,450         | 235          | 7,685         | 9,167         | 303          | 9,470         | 23                             | 29        | 23         |
| <b>Non-criminal prisoners</b>                       | <b>1,396</b>  | <b>54</b>    | <b>1,450</b>  | <b>1,256</b>  | <b>76</b>    | <b>1,332</b>  | <b>-10</b>                     | <b>41</b> | <b>-8</b>  |
| <b>All 15 -17 year olds in prison, of which</b>     | <b>2,449</b>  | <b>65</b>    | <b>2,515</b>  | <b>2,292</b>  | <b>65</b>    | <b>2,357</b>  | <b>-6</b>                      | <b>-1</b> | <b>-6</b>  |
| <b>Remand</b>                                       | <b>564</b>    | <b>16</b>    | <b>580</b>    | <b>526</b>    | <b>20</b>    | <b>546</b>    | <b>-7</b>                      | <b>*</b>  | <b>-6</b>  |
| untried   | 374           | 11           | 386           | 334           | 14           | 348           | -11                            | *         | -10        |
| convicted unsentenced                               | 190           | 4            | 194           | 193           | 6            | 199           | 2                              | *         | 2          |
| <b>Under sentence</b>                               | <b>1,880</b>  | <b>50</b>    | <b>1,930</b>  | <b>1,761</b>  | <b>44</b>    | <b>1,805</b>  | <b>-6</b>                      | <b>*</b>  | <b>-6</b>  |
| Fine defaulter                                      | 0             | 0            | 0             | 0             | 0            | 0             | *                              | *         | *          |
| Less than or equal to 6 months                      | 444           | 23           | 468           | 433           | 9            | 442           | -3                             | *         | -6         |
| Greater than 6 months to less than 12 months        | 263           | 10           | 274           | 252           | 5            | 257           | -4                             | *         | -6         |
| 12 months to less than 4 years                      | 974           | 14           | 988           | 889           | 21           | 910           | -9                             | *         | -8         |
| 4 years or more (excluding Indeterminate sentences) | 147           | 2            | 149           | 116           | 8            | 124           | -21                            | *         | -16        |
| Indeterminate sentences                             | 51            | 0            | 51            | 71            | 0            | 71            | 40                             | *         | 40         |
| <b>Non-criminal prisoners</b>                       | <b>5</b>      | <b>0</b>     | <b>5</b>      | <b>4</b>      | <b>1</b>     | <b>5</b>      | <b>*</b>                       | <b>*</b>  | <b>*</b>   |
| <b>All young adults in prison, of which</b>         | <b>8,783</b>  | <b>411</b>   | <b>9,193</b>  | <b>9,108</b>  | <b>434</b>   | <b>9,542</b>  | <b>4</b>                       | <b>6</b>  | <b>4</b>   |
| <b>Remand</b>                                       | <b>2,010</b>  | <b>103</b>   | <b>2,113</b>  | <b>1,821</b>  | <b>102</b>   | <b>1,923</b>  | <b>-9</b>                      | <b>-1</b> | <b>-9</b>  |
| untried   | 1,209         | 62           | 1,270         | 1,064         | 63           | 1,127         | -12                            | 2         | -11        |
| convicted unsentenced                               | 801           | 42           | 843           | 756           | 39           | 795           | -6                             | *         | -6         |
| <b>Under sentence</b>                               | <b>6,659</b>  | <b>305</b>   | <b>6,964</b>  | <b>7,190</b>  | <b>331</b>   | <b>7,521</b>  | <b>8</b>                       | <b>9</b>  | <b>8</b>   |
| Fine defaulter                                      | 3             | 0            | 3             | 6             | 0            | 6             | *                              | *         | *          |
| Less than or equal to 6 months                      | 797           | 58           | 854           | 897           | 71           | 968           | 13                             | 22        | 13         |
| Greater than 6 months to less than 12 months        | 383           | 24           | 406           | 384           | 24           | 408           | 0                              | *         | 0          |
| 12 months to less than 4 years                      | 3,517         | 145          | 3,662         | 3,704         | 148          | 3,852         | 5                              | 2         | 5          |
| 4 years or more (excluding Indeterminate sentences) | 1,534         | 63           | 1,597         | 1,515         | 69           | 1,584         | -1                             | 9         | -1         |
| Indeterminate sentences                             | 426           | 16           | 442           | 684           | 20           | 704           | 60                             | *         | 59         |
| <b>Non-criminal prisoners</b>                       | <b>114</b>    | <b>2</b>     | <b>116</b>    | <b>98</b>     | <b>1</b>     | <b>99</b>     | <b>-14</b>                     | <b>*</b>  | <b>-15</b> |

Young adults are those aged 18 - 20 and those 21 year olds who were aged 20 or under at conviction who have not been reclassified as part of the adult population

\* indicates that one or both of the comparative numbers are less than 50 which could give rise to misleading percentage changes

**Table 2: Population in prison by offence - remand and immediate custodial sentence**

|                             | Nov-06        |                              | Nov-07        |                              | Percentage change 2006 to 2007 |                              |
|-----------------------------|---------------|------------------------------|---------------|------------------------------|--------------------------------|------------------------------|
|                             | Remand        | Immediate custodial sentence | Remand        | Immediate custodial sentence | Remand                         | Immediate custodial sentence |
| <b>All prisoners</b>        | <b>13,099</b> | <b>65,078</b>                | <b>12,879</b> | <b>66,818</b>                | <b>-2</b>                      | <b>3</b>                     |
| Violence against the person | 3,225         | 17,095                       | 3,167         | 18,548                       | -2                             | 8                            |
| Sexual offences             | 883           | 6,907                        | 840           | 7,426                        | -5                             | 8                            |
| Robbery                     | 1,364         | 8,530                        | 1,347         | 8,614                        | -1                             | 1                            |
| Burglary                    | 1,449         | 8,110                        | 1,353         | 7,836                        | -7                             | -3                           |
| Theft and Handling          | 1,174         | 3,875                        | 964           | 3,792                        | -18                            | -2                           |
| Fraud and Forgery           | 501           | 1,761                        | 584           | 1,859                        | 16                             | 6                            |
| Drug offences               | 1,655         | 10,757                       | 1,964         | 10,654                       | 19                             | -1                           |
| Motoring offences           | 182           | 1,784                        | 155           | 1,436                        | -15                            | -19                          |
| Other offences              | 1,924         | 5,870                        | 1,706         | 6,321                        | -11                            | 8                            |
| Offence not recorded        | 741           | 389                          | 799           | 332                          | 8                              | -15                          |
| <b>All male prisoners</b>   | <b>12,183</b> | <b>61,578</b>                | <b>11,939</b> | <b>63,333</b>                | <b>-2</b>                      | <b>3</b>                     |
| Violence against the person | 3,052         | 16,408                       | 2,989         | 17,794                       | -2                             | 8                            |
| Sexual offences             | 875           | 6,864                        | 829           | 7,380                        | -5                             | 8                            |
| Robbery                     | 1,300         | 8,225                        | 1,292         | 8,307                        | -1                             | 1                            |
| Burglary                    | 1,394         | 7,883                        | 1,291         | 7,633                        | -7                             | -3                           |
| Theft and Handling          | 1,029         | 3,418                        | 839           | 3,385                        | -18                            | -1                           |
| Fraud and Forgery           | 421           | 1,547                        | 483           | 1,566                        | 15                             | 1                            |
| Drug offences               | 1,507         | 9,620                        | 1,789         | 9,641                        | 19                             | 0                            |
| Motoring offences           | 177           | 1,760                        | 151           | 1,407                        | -15                            | -20                          |
| Other offences              | 1,769         | 5,495                        | 1,568         | 5,909                        | -11                            | 8                            |
| Offence not recorded        | 660           | 357                          | 709           | 309                          | 7                              | -13                          |
| <b>All female prisoners</b> | <b>916</b>    | <b>3,500</b>                 | <b>940</b>    | <b>3,485</b>                 | <b>3</b>                       | <b>0</b>                     |
| Violence against the person | 173           | 687                          | 178           | 754                          | 3                              | 10                           |
| Sexual offences             | 9             | 43                           | 11            | 46                           | *                              | *                            |
| Robbery                     | 64            | 305                          | 54            | 307                          | -15                            | 1                            |
| Burglary                    | 56            | 227                          | 63            | 202                          | 12                             | -11                          |
| Theft and Handling          | 145           | 457                          | 125           | 407                          | -14                            | -11                          |
| Fraud and Forgery           | 80            | 214                          | 101           | 293                          | 26                             | 37                           |
| Drug offences               | 148           | 1,137                        | 175           | 1,013                        | 18                             | -11                          |
| Motoring offences           | 5             | 24                           | 5             | 29                           | *                              | *                            |
| Other offences              | 155           | 375                          | 139           | 412                          | -11                            | 10                           |
| Offence not recorded        | 81            | 31                           | 89            | 23                           | 10                             | *                            |

**Table 2: Population in prison by offence - remand and immediate custodial sentence**

|                                   | Nov-06        |                              | Nov-07        |                              | Percentage change 2006 to 2007 |                              |
|-----------------------------------|---------------|------------------------------|---------------|------------------------------|--------------------------------|------------------------------|
|                                   | Remand        | Immediate custodial sentence | Remand        | Immediate custodial sentence | Remand                         | Immediate custodial sentence |
| <b>All adult prisoners</b>        | <b>10,406</b> | <b>56,187</b>                | <b>10,410</b> | <b>57,498</b>                | <b>0</b>                       | <b>2</b>                     |
| Violence against the person       | 2,509         | 14,697                       | 2,495         | 15,863                       | -1                             | 8                            |
| Sexual offences                   | 753           | 6,568                        | 720           | 7,018                        | -4                             | 7                            |
| Robbery                           | 784           | 6,372                        | 860           | 6,406                        | 10                             | 1                            |
| Burglary                          | 1,102         | 6,930                        | 1,051         | 6,615                        | -5                             | -5                           |
| Theft and Handling                | 966           | 3,270                        | 792           | 3,228                        | -18                            | -1                           |
| Fraud and Forgery                 | 470           | 1,704                        | 557           | 1,804                        | 19                             | 6                            |
| Drug offences                     | 1,473         | 10,016                       | 1,703         | 9,894                        | 16                             | -1                           |
| Motoring offences                 | 148           | 1,497                        | 125           | 1,232                        | -16                            | -18                          |
| Other offences                    | 1,580         | 4,831                        | 1,439         | 5,177                        | -9                             | 7                            |
| Offence not recorded              | 621           | 302                          | 668           | 260                          | 8                              | -14                          |
| <b>All adult male prisoners</b>   | <b>9,609</b>  | <b>53,042</b>                | <b>9,592</b>  | <b>54,388</b>                | <b>0</b>                       | <b>3</b>                     |
| Violence against the person       | 2,366         | 14,125                       | 2,344         | 15,249                       | -1                             | 8                            |
| Sexual offences                   | 744           | 6,527                        | 712           | 6,972                        | -4                             | 7                            |
| Robbery                           | 737           | 6,120                        | 809           | 6,165                        | 10                             | 1                            |
| Burglary                          | 1,051         | 6,727                        | 998           | 6,433                        | -5                             | -4                           |
| Theft and Handling                | 835           | 2,850                        | 679           | 2,843                        | -19                            | 0                            |
| Fraud and Forgery                 | 393           | 1,498                        | 462           | 1,521                        | 18                             | 2                            |
| Drug offences                     | 1,340         | 8,938                        | 1,554         | 8,940                        | 16                             | 0                            |
| Motoring offences                 | 143           | 1,476                        | 120           | 1,205                        | -16                            | -18                          |
| Other offences                    | 1,454         | 4,507                        | 1,327         | 4,822                        | -9                             | 7                            |
| Offence not recorded              | 546           | 275                          | 587           | 239                          | 7                              | -13                          |
| <b>All adult female prisoners</b> | <b>797</b>    | <b>3,145</b>                 | <b>818</b>    | <b>3,110</b>                 | <b>3</b>                       | <b>-1</b>                    |
| Violence against the person       | 143           | 572                          | 151           | 614                          | 6                              | 7                            |
| Sexual offences                   | 9             | 41                           | 8             | 46                           | *                              | *                            |
| Robbery                           | 47            | 251                          | 51            | 242                          | *                              | -4                           |
| Burglary                          | 52            | 203                          | 53            | 182                          | 2                              | -10                          |
| Theft and Handling                | 131           | 420                          | 113           | 385                          | -13                            | -8                           |
| Fraud and Forgery                 | 77            | 206                          | 95            | 284                          | 23                             | 38                           |
| Drug offences                     | 133           | 1,078                        | 149           | 954                          | 12                             | -12                          |
| Motoring offences                 | 5             | 22                           | 5             | 27                           | *                              | *                            |
| Other offences                    | 126           | 324                          | 112           | 355                          | -11                            | 10                           |
| Offence not recorded              | 75            | 27                           | 81            | 21                           | 8                              | *                            |

**Table 2: Population in prison by offence - remand and immediate custodial sentence**

|                               | Nov-06     |                              | Nov-07     |                              | Percentage change 2006 to 2007 |                              |
|-------------------------------|------------|------------------------------|------------|------------------------------|--------------------------------|------------------------------|
|                               | Remand     | Immediate custodial sentence | Remand     | Immediate custodial sentence | Remand                         | Immediate custodial sentence |
| <b>All aged 15-17</b>         | <b>580</b> | <b>1,930</b>                 | <b>546</b> | <b>1,805</b>                 | <b>-6</b>                      | <b>-6</b>                    |
| Violence against the person   | 157        | 447                          | 170        | 433                          | 8                              | -3                           |
| Sexual offences               | 24         | 63                           | 28         | 75                           | *                              | 19                           |
| Robbery                       | 167        | 529                          | 121        | 450                          | -27                            | -15                          |
| Burglary                      | 66         | 324                          | 60         | 290                          | -8                             | -11                          |
| Theft and Handling            | 40         | 183                          | 40         | 168                          | *                              | -8                           |
| Fraud and Forgery             | 3          | 6                            | 3          | 8                            | *                              | *                            |
| Drug offences                 | 35         | 91                           | 44         | 71                           | *                              | -22                          |
| Motoring offences             | 5          | 42                           | 7          | 32                           | *                              | *                            |
| Other offences                | 62         | 240                          | 58         | 274                          | -7                             | 14                           |
| Offence not recorded          | 20         | 6                            | 15         | 5                            | *                              | *                            |
| <b>All males aged 15-17</b>   | <b>564</b> | <b>1,880</b>                 | <b>526</b> | <b>1,761</b>                 | <b>-7</b>                      | <b>-6</b>                    |
| Violence against the person   | 151        | 428                          | 164        | 419                          | 9                              | -2                           |
| Sexual offences               | 24         | 62                           | 28         | 75                           | *                              | 21                           |
| Robbery                       | 166        | 519                          | 120        | 439                          | -28                            | -15                          |
| Burglary                      | 65         | 319                          | 59         | 287                          | -9                             | -10                          |
| Theft and Handling            | 38         | 177                          | 38         | 165                          | *                              | -7                           |
| Fraud and Forgery             | 3          | 5                            | 2          | 7                            | *                              | *                            |
| Drug offences                 | 33         | 88                           | 42         | 70                           | *                              | -21                          |
| Motoring offences             | 5          | 42                           | 7          | 32                           | *                              | *                            |
| Other offences                | 62         | 235                          | 52         | 265                          | -17                            | 13                           |
| Offence not recorded          | 17         | 5                            | 15         | 4                            | *                              | *                            |
| <b>All females aged 15-17</b> | <b>16</b>  | <b>50</b>                    | <b>20</b>  | <b>44</b>                    | <b>*</b>                       | <b>*</b>                     |
| Violence against the person   | 6          | 18                           | 6          | 14                           | *                              | *                            |
| Sexual offences               | 0          | 1                            | 0          | 0                            | *                              | *                            |
| Robbery                       | 1          | 10                           | 1          | 11                           | *                              | *                            |
| Burglary                      | 1          | 5                            | 1          | 3                            | *                              | *                            |
| Theft and Handling            | 2          | 6                            | 2          | 3                            | *                              | *                            |
| Fraud and Forgery             | 0          | 1                            | 1          | 1                            | *                              | *                            |
| Drug offences                 | 2          | 3                            | 2          | 1                            | *                              | *                            |
| Motoring offences             | 0          | 0                            | 0          | 0                            | *                              | *                            |
| Other offences                | 0          | 6                            | 6          | 9                            | *                              | *                            |
| Offence not recorded          | 4          | 1                            | 0          | 1                            | *                              | *                            |

**Table 2: Population in prison by offence - remand and immediate custodial sentence**

|                                | Nov-06       |                              | Nov-07       |                              | Percentage change 2006 to 2007 |                              |
|--------------------------------|--------------|------------------------------|--------------|------------------------------|--------------------------------|------------------------------|
|                                | Remand       | Immediate custodial sentence | Remand       | Immediate custodial sentence | Remand                         | Immediate custodial sentence |
| <b>All young adults</b>        | <b>2,113</b> | <b>6,961</b>                 | <b>1,923</b> | <b>7,515</b>                 | <b>-9</b>                      | <b>8</b>                     |
| Violence against the person    | 559          | 1,952                        | 502          | 2,251                        | -10                            | 15                           |
| Sexual offences                | 106          | 276                          | 93           | 333                          | -12                            | 21                           |
| Robbery                        | 414          | 1,629                        | 365          | 1,758                        | -12                            | 8                            |
| Burglary                       | 280          | 856                          | 242          | 931                          | -14                            | 9                            |
| Theft and Handling             | 168          | 422                          | 132          | 395                          | -22                            | -6                           |
| Fraud and Forgery              | 28           | 51                           | 23           | 47                           | *                              | *                            |
| Drug offences                  | 147          | 650                          | 216          | 689                          | 47                             | 6                            |
| Motoring offences              | 29           | 244                          | 24           | 172                          | *                              | -30                          |
| Other offences                 | 282          | 798                          | 210          | 871                          | -26                            | 9                            |
| Offence not recorded           | 100          | 81                           | 116          | 67                           | 16                             | -17                          |
| <b>All male young adults</b>   | <b>2,010</b> | <b>6,656</b>                 | <b>1,821</b> | <b>7,184</b>                 | <b>-9</b>                      | <b>8</b>                     |
| Violence against the person    | 536          | 1,855                        | 481          | 2,126                        | -10                            | 15                           |
| Sexual offences                | 106          | 275                          | 89           | 333                          | -16                            | 21                           |
| Robbery                        | 397          | 1,585                        | 363          | 1,704                        | -9                             | 8                            |
| Burglary                       | 278          | 837                          | 234          | 913                          | -16                            | 9                            |
| Theft and Handling             | 156          | 391                          | 122          | 378                          | -22                            | -3                           |
| Fraud and Forgery              | 25           | 44                           | 18           | 39                           | *                              | *                            |
| Drug offences                  | 134          | 594                          | 193          | 631                          | 44                             | 6                            |
| Motoring offences              | 29           | 242                          | 24           | 170                          | *                              | -30                          |
| Other offences                 | 253          | 753                          | 189          | 823                          | -25                            | 9                            |
| Offence not recorded           | 97           | 78                           | 108          | 67                           | 11                             | -15                          |
| <b>All female young adults</b> | <b>103</b>   | <b>305</b>                   | <b>102</b>   | <b>331</b>                   | <b>-1</b>                      | <b>9</b>                     |
| Violence against the person    | 24           | 97                           | 21           | 125                          | *                              | 29                           |
| Sexual offences                | 0            | 1                            | 4            | 0                            | *                              | *                            |
| Robbery                        | 17           | 44                           | 2            | 54                           | *                              | *                            |
| Burglary                       | 3            | 19                           | 8            | 18                           | *                              | *                            |
| Theft and Handling             | 13           | 31                           | 9            | 18                           | *                              | *                            |
| Fraud and Forgery              | 3            | 7                            | 5            | 8                            | *                              | *                            |
| Drug offences                  | 13           | 56                           | 23           | 58                           | *                              | 3                            |
| Motoring offences              | 0            | 2                            | 0            | 2                            | *                              | *                            |
| Other offences                 | 29           | 45                           | 21           | 48                           | *                              | *                            |
| Offence not recorded           | 3            | 3                            | 8            | 1                            | *                              | *                            |

\* indicates that one or both of the comparative numbers are less than 50 which could give rise to misleading percentage changes

**Table 3: Young population in prison: by type of custody and sex**

30 November 2007

|   | 15         | 16         | 17           | Total - under<br>18 | 18           | 19           | 20           | 21         | Total Young<br>Adults |
|---|------------|------------|--------------|---------------------|--------------|--------------|--------------|------------|-----------------------|
| <b>All young population in prisons, of which</b>        |            |            |              |                     |              |              |              |            |                       |
| <b><i>Prisoners on remand</i></b>                       | <b>52</b>  | <b>148</b> | <b>347</b>   | <b>546</b>          | <b>591</b>   | <b>637</b>   | <b>604</b>   | <b>91</b>  | <b>1,923</b>          |
| untried   | 32         | 96         | 220          | <b>348</b>          | 367          | 347          | 352          | 62         | <b>1,127</b>          |
| convicted unsentenced                                   | 20         | 53         | 126          | <b>199</b>          | 224          | 291          | 252          | 29         | <b>795</b>            |
| <b><i>Prisoners under sentence</i></b>                  | <b>210</b> | <b>552</b> | <b>1,042</b> | <b>1,805</b>        | <b>1,632</b> | <b>2,487</b> | <b>2,746</b> | <b>656</b> | <b>7,521</b>          |
| Fine defaulter  | 0          | 0          | 0            | <b>0</b>            | 0            | 3            | 3            | 0          | <b>6</b>              |
| Immediate custodial sentence                            | 210        | 552        | 1,042        | <b>1,805</b>        | 1,632        | 2,484        | 2,743        | 656        | <b>7,515</b>          |
| <b><i>Non-criminal prisoners</i></b>                    | <b>0</b>   | <b>0</b>   | <b>5</b>     | <b>5</b>            | <b>19</b>    | <b>24</b>    | <b>41</b>    | <b>14</b>  | <b>99</b>             |
| <b>All young male population in prisons, of which</b>   |            |            |              |                     |              |              |              |            |                       |
| <b><i>Prisoners on remand</i></b>                       | <b>52</b>  | <b>148</b> | <b>327</b>   | <b>526</b>          | <b>557</b>   | <b>602</b>   | <b>576</b>   | <b>86</b>  | <b>1,821</b>          |
| untried   | 32         | 96         | 206          | <b>334</b>          | 339          | 333          | 335          | 58         | <b>1,064</b>          |
| convicted unsentenced                                   | 20         | 53         | 121          | <b>193</b>          | 218          | 270          | 241          | 27         | <b>756</b>            |
| <b><i>Prisoners under sentence</i></b>                  | <b>210</b> | <b>552</b> | <b>999</b>   | <b>1,761</b>        | <b>1,561</b> | <b>2,372</b> | <b>2,625</b> | <b>631</b> | <b>7,190</b>          |
| Fine defaulter  | 0          | 0          | 0            | <b>0</b>            | 0            | 3            | 3            | 0          | <b>6</b>              |
| Immediate custodial sentence                            | 210        | 552        | 999          | <b>1,761</b>        | 1,561        | 2,369        | 2,622        | 631        | <b>7,184</b>          |
| <b><i>Non-criminal prisoners</i></b>                    | <b>0</b>   | <b>0</b>   | <b>4</b>     | <b>4</b>            | <b>19</b>    | <b>23</b>    | <b>41</b>    | <b>14</b>  | <b>98</b>             |
| <b>All young female population in prisons, of which</b> |            |            |              |                     |              |              |              |            |                       |
| <b><i>Prisoners on remand</i></b>                       | <b>0</b>   | <b>0</b>   | <b>20</b>    | <b>20</b>           | <b>34</b>    | <b>35</b>    | <b>28</b>    | <b>5</b>   | <b>102</b>            |
| untried   | 0          | 0          | 14           | <b>14</b>           | 28           | 14           | 18           | 4          | <b>63</b>             |
| convicted unsentenced                                   | 0          | 0          | 6            | <b>6</b>            | 6            | 21           | 11           | 1          | <b>39</b>             |
| <b><i>Prisoners under sentence</i></b>                  | <b>0</b>   | <b>0</b>   | <b>44</b>    | <b>44</b>           | <b>71</b>    | <b>115</b>   | <b>121</b>   | <b>25</b>  | <b>331</b>            |
| Fine defaulter  | 0          | 0          | 0            | <b>0</b>            | 0            | 0            | 0            | 0          | <b>0</b>              |
| Immediate custodial sentence                            | 0          | 0          | 44           | <b>44</b>           | 71           | 115          | 121          | 25         | <b>331</b>            |
| <b><i>Non-criminal prisoners</i></b>                    | <b>0</b>   | <b>0</b>   | <b>1</b>     | <b>1</b>            | <b>0</b>     | <b>1</b>     | <b>0</b>     | <b>0</b>   | <b>1</b>              |

Young adults are those aged 18 - 20 and those 21 year olds who were aged 20 or under at conviction who have not been reclassified as part of the adult population

**Table 4: CNA and population by sex and establishment**

30 November 2007

| <u>Establishment</u> | <u>In use<br/>CNA</u> | <u>Population</u> |
|----------------------|-----------------------|-------------------|
| <b>Males</b>         |                       |                   |
| Acklington           | 882                   | 877               |
| Albany               | 526                   | 513               |
| Altcourse            | 794                   | 1,287             |
| Ashfield             | 400                   | 373               |
| Ashwell              | 535                   | 537               |
| Aylesbury            | 437                   | 444               |
| Bedford              | 324                   | 487               |
| Belmarsh             | 799                   | 917               |
| Birmingham           | 1,121                 | 1,449             |
| Blakenhurst          | 821                   | 1,068             |
| Blantyre House       | 122                   | 119               |
| Blundestone          | 421                   | 465               |
| Brinsford            | 473                   | 445               |
| Bristol              | 420                   | 603               |
| Brixton              | 606                   | 811               |
| Brockhill            | 170                   | 165               |
| Buckley Hall         | 350                   | 381               |
| Bullingdon           | 759                   | 959               |
| Bullwood Hall        | 170                   | 182               |
| Camp Hill            | 523                   | 589               |
| Canterbury           | 196                   | 279               |
| Cardiff              | 524                   | 756               |
| Castington           | 400                   | 396               |
| Channings Wood       | 698                   | 718               |
| Chelmsford           | 541                   | 697               |
| Coldingley           | 370                   | 390               |
| Cookham Wood         | 17                    | 12                |
| Dartmoor             | 619                   | 633               |
| Deerbolt             | 447                   | 449               |
| Doncaster            | 771                   | 1,147             |
| Dorchester           | 147                   | 225               |
| Dovegate             | 800                   | 842               |
| Dover                | 316                   | 304               |
| Durham               | 591                   | 954               |
| Edmunds Hill         | 366                   | 356               |
| Elmley               | 753                   | 987               |
| Erlestoke            | 410                   | 408               |
| Everthorpe           | 603                   | 684               |
| Exeter               | 316                   | 468               |
| Featherstone         | 663                   | 677               |
| Feltham              | 762                   | 590               |
| Ford                 | 541                   | 471               |
| Forest Bank          | 800                   | 1,120             |
| Frankland            | 732                   | 729               |
| Full Sutton          | 600                   | 589               |
| Garth                | 779                   | 709               |
| Gartree              | 570                   | 574               |
| Glen Parva           | 668                   | 809               |
| Gloucester           | 225                   | 297               |
| Grendon/Spring Hill  | 548                   | 526               |
| Guys Marsh           | 520                   | 570               |
| Haslar               | 123                   | 117               |
| Haverigg             | 622                   | 595               |
| Hewell Grange        | 187                   | 186               |
| Highdown             | 693                   | 790               |
| Highpoint            | 788                   | 801               |

**Table 4: CNA and population by sex and establishment**

30 November 2007

| <b>Establishment</b> | <b>In use</b> |                   |
|----------------------|---------------|-------------------|
|                      | <b>CNA</b>    | <b>Population</b> |
| Hindley              | 539           | 499               |
| Hollesley Bay        | 330           | 325               |
| Holme House          | 857           | 998               |
| Hull                 | 723           | 1,018             |
| Huntercombe          | 360           | 353               |
| Kennet               | 175           | 329               |
| Kingston(Portsmouth) | 199           | 199               |
| Kirkham              | 590           | 506               |
| Kirklevington        | 223           | 223               |
| Lancaster            | 96            | 169               |
| Lancaster Farms      | 480           | 518               |
| Latchmere House      | 207           | 200               |
| Leeds                | 678           | 1,020             |
| Leicester            | 206           | 346               |
| Lewes                | 458           | 518               |
| Leyhill              | 512           | 402               |
| Lincoln              | 436           | 696               |
| Lindholme            | 1,006         | 1,042             |
| Littlehey            | 663           | 703               |
| Liverpool            | 1,160         | 1,380             |
| Long Lartin          | 426           | 416               |
| Lowdham Grange       | 640           | 673               |
| Maidstone            | 451           | 473               |
| Manchester           | 954           | 1,231             |
| Moorland Open        | 260           | 246               |
| Moorland             | 740           | 767               |
| North Sea Camp       | 306           | 276               |
| Northallerton        | 153           | 242               |
| Norwich              | 447           | 532               |
| Nottingham           | 379           | 554               |
| Onley                | 640           | 632               |
| Parc                 | 838           | 1,122             |
| Parkhurst            | 461           | 503               |
| Pentonville          | 799           | 1,143             |
| Peterborough         | 480           | 624               |
| Portland             | 519           | 541               |
| Preston              | 429           | 728               |
| Ranby                | 912           | 1,041             |
| Reading              | 182           | 263               |
| Risley               | 1,046         | 1,087             |
| Rochester            | 392           | 388               |
| Rye Hill             | 600           | 594               |
| Shepton Mallet       | 165           | 184               |
| Shrewsbury           | 175           | 325               |
| Stafford             | 680           | 674               |
| Standford Hill       | 464           | 437               |
| Stocken              | 685           | 706               |
| Stoke Heath          | 516           | 614               |
| Sudbury              | 563           | 545               |
| Swaleside            | 751           | 772               |
| Swansea              | 240           | 422               |
| Swinfen Hall         | 600           | 614               |
| The Mount            | 747           | 760               |
| The Verne            | 560           | 589               |
| The Wolds            | 320           | 373               |
| Thorn Cross          | 322           | 214               |
| Usk/Prescoed         | 317           | 380               |
| Wakefield            | 748           | 743               |

## Table 4: CNA and population by sex and establishment

30 November 2007

| Establishment                   | In use        |               |
|---------------------------------|---------------|---------------|
|                                 | CNA           | Population    |
| Wandsworth                      | 965           | 1,475         |
| Warren Hill                     | 222           | 214           |
| Wayland                         | 657           | 712           |
| Wealstun                        | 885           | 855           |
| Wellingborough                  | 636           | 639           |
| Werrington                      | 160           | 116           |
| Wetherby                        | 360           | 374           |
| Whatton                         | 733           | 803           |
| Whitemoor                       | 464           | 450           |
| Winchester                      | 380           | 550           |
| Woodhill                        | 641           | 815           |
| Wormwood Scrubs                 | 1,173         | 1,257         |
| Wymott                          | 1,005         | 1,057         |
| <b>TOTAL</b>                    | <b>67,445</b> | <b>76,715</b> |
| Police Cells                    | *             | 177           |
| <b>Males TOTAL in Custody</b>   | <b>67,445</b> | <b>76,892</b> |
| <b>Females</b>                  |               |               |
| Askham Grange                   | 126           | 110           |
| Bronzefield                     | 450           | 455           |
| Downview                        | 358           | 352           |
| Drake Hall                      | 315           | 307           |
| East Sutton Park                | 98            | 97            |
| Eastwood Park                   | 326           | 344           |
| Foston Hall                     | 283           | 270           |
| Holloway                        | 498           | 479           |
| Low Newton                      | 285           | 300           |
| Morton Hall                     | 392           | 366           |
| New Hall                        | 393           | 418           |
| Peterborough                    | 360           | 350           |
| Send                            | 216           | 213           |
| Styal                           | 450           | 451           |
| <b>TOTAL</b>                    | <b>4,550</b>  | <b>4,512</b>  |
| Police Cells                    | *             | 0             |
| <b>Females TOTAL in Custody</b> | <b>4,550</b>  | <b>4,512</b>  |
| <b>Males and Females TOTAL</b>  | <b>71,995</b> | <b>81,404</b> |

In Use CNA - Certified Normal Accommodation that is available for immediate use, excludes damaged cells, cells affected by building works and cells taken out of use due to staff shortages

\* On 30<sup>th</sup> November up to 400 police cells available under operation safeguard which are not included in the CNA figure.