



Ministry of
JUSTICE

NOMS National Offender
Management Service
Working together to reduce re-offending

Population in Custody MONTHLY TABLES

May 2007
England and Wales

Population in custody May 2007 - Key points

RDS NOMS

Population in custody

- The population in custody on 31 May 2007 was 81,106, 4 per cent more than a year earlier. The population in prisons was 80,264, in police cells it was 364, in Secure Training Centres (STCs) it was 251, and in Secure Children's Homes (SCHs) it was 227.

Population in prison

- The male prison population increased by 4 per cent to 75,885 and the female prison population decreased 2 per cent to 4,379.
- The remand population in prison decreased by 6 per cent to 12,865 in May 2007 compared to May 2006. Within this total, the untried population decreased 2 per cent to 8,334 and the convicted unsentenced population decreased 12 per cent to 4,531.
- Amongst the remand population the largest percentage decreases since May 2006 were seen in motoring offences, theft and handling and sexual offences down by 42, 24 and 11 per cent respectively. The only increases were seen in drug offences, which was up 8 per cent and fraud and forgery up 3 per cent.
- There were 65,962 sentenced⁽¹⁾ prisoners at 31 May 2007, an increase of 6 per cent from a year earlier. The largest proportionate increases since May 2006 were for those sentenced to indeterminate sentences (Life sentences and Indeterminate sentences for Public Protection) which increased by 31 per cent.
- Amongst the sentenced⁽¹⁾ prison population violence against the person, sexual offences and other offences saw the largest percentage increases up by 12, 12 and 11 per cent respectively from May 2006. The number of people serving sentences for motoring offences saw the largest percentage decrease since May 2006, down by 11 per cent.
- The adult population in prison was 68,450 at 31 May 2007, an increase of 3 per cent from a year earlier. The young adult and 15-17 year olds population in prison also saw an increase over this time period with young adults up by 8 per cent to 9,364 and 15 to 17 year olds up by 2 per cent to 2,450.
- The prison population was 113 per cent of the 'In Use CNA' (71,288) at 31 May 2007.

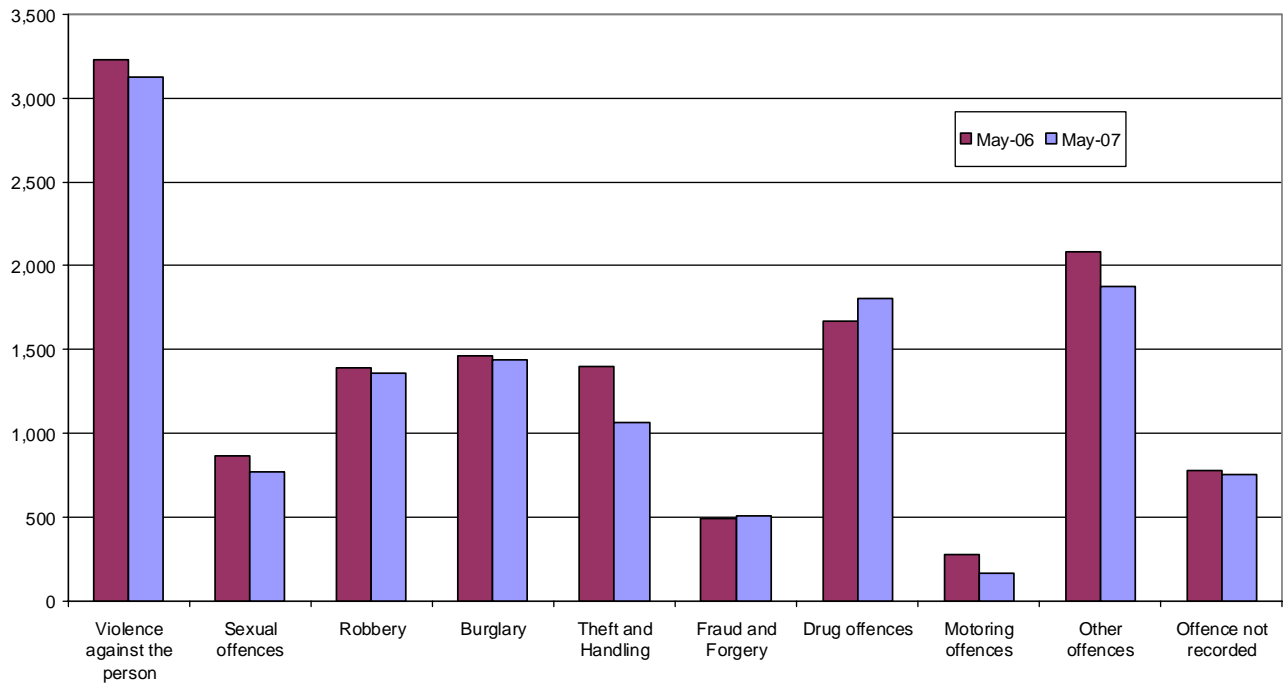
(1) Excludes fine defaulters

For further queries:

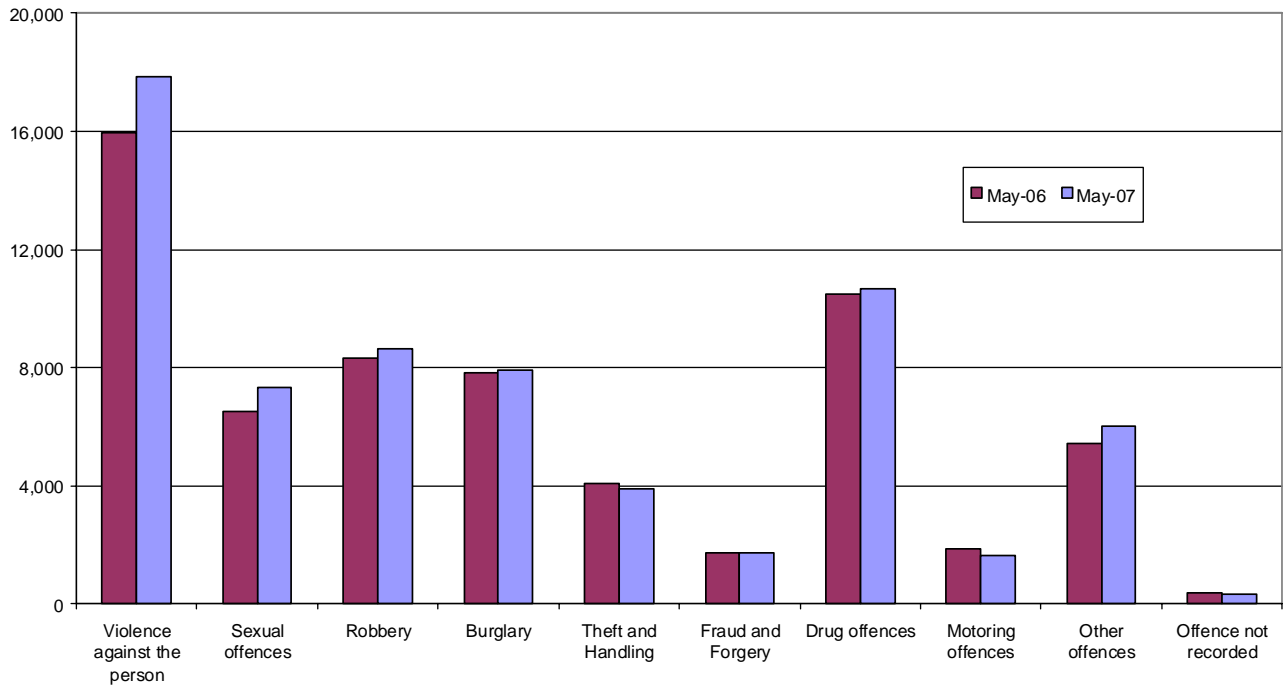
E-mail: rdsnomsstatistics@justice.gsi.gov.uk

Press enquiries - Press Office 020 7210 0638

Remand population by offence group



Immediate custodial sentenced population by offence group



NOTES

Data sources and quality

The data presented in this brief are drawn from the prison administrative IT systems. Although care is taken when processing and analysing the returns, the detail collected is subject to the inaccuracies inherent in any large-scale recording system. While the figures shown have been checked as far as practicable, they must be approximate and not necessarily accurate to the last whole number shown in the tables. They are fit to be used for purposes of looking at trends and for comparing the relative magnitude of components.

We are currently undertaking a programme of work to audit the quality of our data, and to identify priorities for improvements. This may lead to changes in future tables.

The prison population information has been drawn from two prison sources. The first source is the routine provision by prison establishments of records of the numbers of persons held in custody at the end of each month, broadly subdivided according to age, sex, custody type and sentence length. The records are collated and processed centrally, to produce the main estimates of the end of month population presented. The second source is the electronically held details for individual inmates such as date of birth, sex, religion, ethnic origin, custody type, offence, and reception and discharge dates and, for sentenced prisoners, sentence length. These data are collected on a central computer database and are used to produce the analyses by offence group and individual year of age. They form the basis of detailed population breakdowns, supplementing the aggregates derived from the first source, to which they are scaled for consistency. A new more detailed method of scaling this information was developed in 2004.

Because the detailed population breakdowns have been scaled and also rounded to the nearest whole number, individual components may not sum to the totals.

Information on the population in STCs and SCHs has been supplied by the Youth Justice Board.

All figures are provisional pending publication of the annual Offender Management Caseload statistical publication.

Definitions

Population in custody - this includes those held in prison establishments, police cells under Operation Safeguard, secure training centres (STCs) and Local Authority secure children's homes (SCHs). This is a change to previous outputs (notably Prison Population Monthly Brief and Prison Statistics England and Wales) where the reference to 'population in custody' just covered those held in prison establishments and police cells. All coverage is for England and Wales.

Population in prison – this includes those held in prisons in England and Wales, including the three removal centres of Dover, Haslar and Lindholme.

Sentenced population – this includes those sentenced to an immediate custodial sentence and fine defaulters.

Immediate custodial sentence – this does not include fine defaulters.

Adult prisoners – these are prisoners aged 21 years and over.

Young adults – these are prisoners aged 18 to 20, but including 21 year old prisoners who were aged 20 or under at conviction who have not been reclassified as part of the adult population

Indeterminate sentences – these cover life sentences and indeterminate sentences for public protection (IPP).

Table 1: Population in custody: by type of custody and sex

	May-06			May-07			Percentage change 2006 to 2007		
	Males	Females	Total	Males	Females	Total	Males	Females	Total
All population in custody, of which	73,559	4,610	78,169	76,598	4,508	81,106	4	-2	4
Prisons	73,211	4,466	77,677	75,885	4,379	80,264	4	-2	3
Police cells	0	0	0	364	0	364	*	*	*
SCHs	188	46	234	188	39	227	0	*	-3
STCs	160	98	258	161	90	251	1	-8	-3
All population in prison, of which	73,211	4,466	77,677	75,885	4,379	80,264	4	-2	3
Remand	12,721	932	13,653	11,933	932	12,865	-6	0	-6
untried	7,978	526	8,504	7,733	601	8,334	-3	14	-2
convicted unsentenced	4,743	406	5,149	4,200	331	4,531	-11	-18	-12
Under sentence	59,145	3,463	62,608	62,626	3,397	66,023	6	-2	5
Fine defaulter	81	4	85	59	5	64	-27	*	-25
Less than or equal to 6 months	5,218	491	5,709	5,093	527	5,620	-2	7	-2
Greater than 6 months to less than 12 months	2,204	250	2,454	2,306	220	2,526	5	-12	3
12 months to less than 4 years	20,081	1,270	21,351	21,603	1,217	22,820	8	-4	7
4 years or more (excluding Indeterminate sentences)	24,656	1,229	25,885	24,527	1,131	25,658	-1	-8	-1
Indeterminate sentences	6,905	219	7,124	9,038	297	9,335	31	36	31
Non-criminal prisoners	1,345	71	1,416	1,326	50	1,376	-1	-30	-3
All adult population in prison, of which	62,609	3,993	66,602	64,555	3,895	68,450	3	-2	3
Remand	10,169	817	10,986	9,487	793	10,280	-7	-3	-6
untried	6,358	462	6,820	6,166	513	6,679	-3	11	-2
convicted unsentenced	3,811	355	4,166	3,321	280	3,601	-13	-21	-14
Under sentence	51,225	3,113	54,338	53,829	3,057	56,886	5	-2	5
Fine defaulter	79	4	83	56	5	61	-29	*	-27
Less than or equal to 6 months	4,044	435	4,479	3,859	450	4,309	-5	3	-4
Greater than 6 months to less than 12 months	1,615	219	1,834	1,663	190	1,853	3	-13	1
12 months to less than 4 years	15,931	1,088	17,019	17,034	1,064	18,098	7	-2	6
4 years or more (excluding Indeterminate sentences)	23,001	1,166	24,167	22,829	1,068	23,897	-1	-8	-1
Indeterminate sentences	6,555	201	6,756	8,388	280	8,668	28	39	28
Non-criminal prisoners	1,215	63	1,278	1,239	45	1,284	2	*	0
All 15 -17 year olds in prison, of which	2,342	63	2,405	2,369	81	2,450	1	29	2
Remand	606	15	622	531	23	554	-12	*	-11
untried	396	12	408	350	18	368	-12	*	-10
convicted unsentenced	210	4	214	181	5	186	-14	*	-13
Under sentence	1,734	47	1,781	1,836	58	1,894	6	*	6
Fine defaulter	0	0	0	0	0	0	*	*	*
Less than or equal to 6 months	448	10	457	447	17	464	0	*	2
Greater than 6 months to less than 12 months	242	8	250	267	7	274	10	*	10
12 months to less than 4 years	877	28	905	927	26	953	6	*	5
4 years or more (excluding Indeterminate sentences)	129	1	130	126	5	131	-2	*	1
Indeterminate sentences	38	1	40	69	3	72	*	*	*
Non-criminal prisoners	2	0	2	2	0	2	*	*	*
All young adults in prison, of which	8,260	410	8,670	8,961	403	9,364	8	-2	8
Remand	1,946	100	2,045	1,915	116	2,031	-2	16	-1
untried	1,224	52	1,276	1,217	70	1,287	-1	35	1
convicted unsentenced	722	47	769	698	46	744	-3	*	-3
Under sentence	6,186	303	6,489	6,961	282	7,243	13	-7	12
Fine defaulter	2	0	2	3	0	3	*	*	*
Less than or equal to 6 months	726	47	773	787	60	847	8	*	10
Greater than 6 months to less than 12 months	347	23	370	376	23	399	8	*	8
12 months to less than 4 years	3,273	154	3,427	3,642	127	3,769	11	-18	10
4 years or more (excluding Indeterminate sentences)	1,526	62	1,588	1,572	58	1,630	3	-6	3
Indeterminate sentences	312	17	328	581	14	595	86	*	81
Non-criminal prisoners	128	8	136	85	5	90	-34	*	-34

Young adults are those aged 18 - 20 and those 21 year olds who were aged 20 or under at conviction who have not been reclassified as part of the adult population

* indicates that one or both of the comparative numbers are less than 50 which could give rise to misleading percentage changes

Data Sources and Quality

These figures have been drawn from administrative IT systems, which, as with any large scale recording system, are subject to possible errors with data entry and processing. See Data Sources and Quality section of report for more information.

Table 2: Population in prison by offence - remand and immediate custodial sentence

	May-06		May-07		Percentage change 2006 to 2007	
	Remand	Immediate custodial sentence	Remand	Immediate custodial sentence	Remand	Immediate custodial sentence
All prisoners	13,653	62,523	12,866	65,962	-6	6
Violence against the person	3,228	15,956	3,125	17,866	-3	12
Sexual offences	866	6,532	768	7,310	-11	12
Robbery	1,393	8,300	1,362	8,627	-2	4
Burglary	1,466	7,817	1,442	7,913	-2	1
Theft and Handling	1,401	4,055	1,062	3,888	-24	-4
Fraud and Forgery	489	1,718	504	1,708	3	-1
Drug offences	1,671	10,495	1,805	10,664	8	2
Motoring offences	276	1,840	161	1,632	-42	-11
Other offences	2,084	5,436	1,881	6,018	-10	11
Offence not recorded	779	375	756	336	-3	-10
All male prisoners	12,721	59,064	11,934	62,568	-6	6
Violence against the person	3,087	15,302	2,962	17,190	-4	12
Sexual offences	859	6,496	758	7,262	-12	12
Robbery	1,329	7,980	1,299	8,323	-2	4
Burglary	1,417	7,599	1,387	7,716	-2	2
Theft and Handling	1,230	3,619	938	3,451	-24	-5
Fraud and Forgery	417	1,480	436	1,481	5	0
Drug offences	1,506	9,350	1,602	9,610	6	3
Motoring offences	266	1,811	160	1,596	-40	-12
Other offences	1,918	5,080	1,724	5,624	-10	11
Offence not recorded	693	348	668	315	-4	-9
All female prisoners	932	3,459	932	3,394	0	-2
Violence against the person	141	654	163	676	16	3
Sexual offences	8	36	10	48	*	*
Robbery	64	321	63	304	-2	-5
Burglary	49	219	55	197	*	-10
Theft and Handling	171	436	124	437	-27	0
Fraud and Forgery	73	238	68	227	-7	-5
Drug offences	165	1,144	203	1,054	23	-8
Motoring offences	10	29	1	36	*	*
Other offences	165	356	157	394	-5	11
Offence not recorded	86	27	88	21	2	*

Table 2: Population in prison by offence - remand and immediate custodial sentence

	May-06		May-07		Percentage change 2006 to 2007	
	Remand	Immediate custodial sentence	Remand	Immediate custodial sentence	Remand	Immediate custodial sentence
All adult prisoners	10,986	54,255	10,281	56,826	-6	5
Violence against the person	2,547	13,772	2,468	15,288	-3	11
Sexual offences	747	6,205	673	6,916	-10	11
Robbery	832	6,297	796	6,394	-4	2
Burglary	1,142	6,727	1,125	6,737	-1	0
Theft and Handling	1,184	3,424	846	3,285	-29	-4
Fraud and Forgery	465	1,653	486	1,652	5	0
Drug offences	1,490	9,794	1,596	9,917	7	1
Motoring offences	218	1,570	126	1,412	-42	-10
Other offences	1,710	4,493	1,532	4,959	-10	10
Offence not recorded	652	319	633	266	-3	-17
All adult male prisoners	10,169	51,146	9,488	53,773	-7	5
Violence against the person	2,437	13,208	2,346	14,729	-4	12
Sexual offences	739	6,174	663	6,869	-10	11
Robbery	781	6,049	752	6,160	-4	2
Burglary	1,104	6,527	1,076	6,556	-3	0
Theft and Handling	1,027	3,015	731	2,876	-29	-5
Fraud and Forgery	394	1,426	418	1,434	6	1
Drug offences	1,337	8,730	1,419	8,911	6	2
Motoring offences	210	1,541	125	1,378	-40	-11
Other offences	1,569	4,179	1,402	4,612	-11	10
Offence not recorded	571	297	556	248	-3	-16
All adult female prisoners	817	3,109	793	3,053	-3	-2
Violence against the person	110	565	122	559	11	-1
Sexual offences	8	31	10	47	*	*
Robbery	51	248	44	234	*	-6
Burglary	38	200	49	181	*	-10
Theft and Handling	157	409	115	409	-27	0
Fraud and Forgery	71	227	68	218	-4	-4
Drug offences	152	1,064	177	1,006	16	-5
Motoring offences	8	29	1	34	*	*
Other offences	141	314	130	347	-8	11
Offence not recorded	81	22	77	18	-5	*

Table 2: Population in prison by offence - remand and immediate custodial sentence

	May-06		May-07		<i>Percentage change 2006 to 2007</i>	
	Remand	Immediate custodial sentence	Remand	Immediate custodial sentence	<i>Remand</i>	<i>Immediate custodial sentence</i>
All aged 15-17	622	1,781	554	1,895	-11	6
Violence against the person	161	381	152	449	-6	18
Sexual offences	33	66	18	71	*	8
Robbery	170	463	148	501	-13	8
Burglary	69	267	52	292	-25	9
Theft and Handling	50	188	42	194	*	3
Fraud and Forgery	4	7	2	7	*	*
Drug offences	30	68	39	74	*	9
Motoring offences	8	63	8	45	*	*
Other offences	77	264	69	248	-10	-6
Offence not recorded	19	14	24	14	*	*
All males aged 15-17	606	1,734	531	1,837	-12	6
Violence against the person	153	371	146	427	-5	15
Sexual offences	33	64	18	71	*	11
Robbery	167	451	147	486	-12	8
Burglary	67	263	51	289	-24	10
Theft and Handling	48	186	41	188	*	1
Fraud and Forgery	4	7	2	7	*	*
Drug offences	30	61	35	72	*	18
Motoring offences	8	63	8	45	*	*
Other offences	76	256	63	240	-17	-6
Offence not recorded	19	13	20	12	*	*
All females aged 15-17	15	47	23	58	*	*
Violence against the person	8	10	6	22	*	*
Sexual offences	0	2	0	0	*	*
Robbery	3	13	1	15	*	*
Burglary	2	4	1	3	*	*
Theft and Handling	2	2	1	6	*	*
Fraud and Forgery	0	0	0	0	*	*
Drug offences	0	7	4	2	*	*
Motoring offences	0	0	0	0	*	*
Other offences	1	8	6	8	*	*
Offence not recorded	0	1	4	2	*	*

Table 2: Population in prison by offence - remand and immediate custodial sentence

	May-06		May-07		Percentage change 2006 to 2007	
	Remand	Immediate custodial sentence	Remand	Immediate custodial sentence	Remand	Immediate custodial sentence
All young adults	2,045	6,487	2,031	7,241	-1	12
Violence against the person	520	1,803	505	2,129	-3	18
Sexual offences	87	261	77	323	-11	24
Robbery	391	1,540	418	1,732	7	12
Burglary	255	823	265	884	4	7
Theft and Handling	167	443	174	409	4	-8
Fraud and Forgery	20	58	16	49	*	*
Drug offences	151	633	170	673	13	6
Motoring offences	50	206	27	175	*	-15
Other offences	297	679	280	811	-6	19
Offence not recorded	108	41	99	56	-8	*
All male young adults	1,946	6,184	1,915	6,958	-2	13
Violence against the person	497	1,724	470	2,034	-5	18
Sexual offences	87	258	77	322	-11	25
Robbery	381	1,480	400	1,677	5	13
Burglary	245	808	260	871	6	8
Theft and Handling	155	418	166	387	7	-7
Fraud and Forgery	18	47	16	40	*	*
Drug offences	138	560	148	627	7	12
Motoring offences	48	206	27	173	*	-16
Other offences	274	645	259	772	-5	20
Offence not recorded	103	38	92	55	-11	*
All female young adults	100	303	116	283	16	-7
Violence against the person	23	79	35	95	*	20
Sexual offences	0	3	0	1	*	*
Robbery	11	60	18	55	*	-8
Burglary	10	15	5	13	*	*
Theft and Handling	12	25	8	22	*	*
Fraud and Forgery	2	11	0	9	*	*
Drug offences	13	73	22	46	*	*
Motoring offences	2	0	0	2	*	*
Other offences	23	34	21	39	*	*
Offence not recorded	5	3	7	1	*	*

* indicates that one or both of the comparative numbers are less than 50 which could give rise to misleading percentage changes

Data Sources and Quality

These figures have been drawn from administrative IT systems, which, as with any large scale recording system, are subject to possible errors with data entry and processing. See Data Sources and Quality section of report for more information.

Table 3: Young population in prison: by type of custody and sex

31 May 2007

	15	16	17	Total - under 18	18	19	20	21	Total Young Adults
All young population in prisons, of which									
<i>Prisoners on remand</i>	65	135	355	555	672	654	624	78	2,028
untried	43	93	232	368	411	414	409	52	1,286
convicted unsentenced	22	42	122	186	261	240	215	26	743
<i>Prisoners under sentence</i>	221	589	1,084	1,894	1,524	2,409	2,561	750	7,243
Fine defaulter	0	0	0	0	0	2	1	0	3
Immediate custodial sentence	221	589	1,084	1,894	1,524	2,407	2,560	750	7,240
<i>Non-criminal prisoners</i>	0	0	2	2	8	38	24	20	90
All young male population in prisons, of which									
<i>Prisoners on remand</i>	65	135	331	531	618	629	596	70	1,913
untried	43	93	214	350	373	398	397	48	1,216
convicted unsentenced	22	42	117	181	245	231	199	22	697
<i>Prisoners under sentence</i>	221	589	1,026	1,836	1,460	2,316	2,454	731	6,961
Fine defaulter	0	0	0	0	0	2	1	0	3
Immediate custodial sentence	221	589	1,026	1,836	1,460	2,314	2,453	731	6,958
<i>Non-criminal prisoners</i>	0	0	2	2	8	33	24	20	85
All young female population in prisons, of which									
<i>Prisoners on remand</i>	0	0	24	24	54	25	28	8	115
untried	0	0	18	18	38	16	12	4	70
convicted unsentenced	0	0	5	5	16	9	16	4	46
<i>Prisoners under sentence</i>	0	0	58	58	64	93	107	19	282
Fine defaulter	0	0	0	0	0	0	0	0	0
Immediate custodial sentence	0	0	58	58	64	93	107	19	282
<i>Non-criminal prisoners</i>	0	0	0	0	0	5	0	0	5

Young adults are those aged 18 - 20 and those 21 year olds who were aged 20 or under at conviction who have not been reclassified as part of the adult population

Data Sources and Quality

These figures have been drawn from administrative IT systems, which, as with any large scale recording system, are subject to possible errors with data entry and processing. See Data Sources and Quality section of report for more information.

Table 4: CNA and population by sex and establishment

31 May 2007

Establishment	In use CNA	Establishment Total
Males		
Acklington	854	847
Albany	526	521
Altcourse	614	1,097
Ashfield	400	396
Ashwell	535	541
Aylesbury	437	442
Bedford	325	490
Belmarsh	799	922
Birmingham	1,121	1,445
Blakenhurst	821	1,068
Blantyre House	122	121
Blundestone	421	461
Brinsford	473	467
Bristol	420	604
Brixton	606	803
Brockhill	170	170
Buckley Hall	350	385
Bullingdon	759	967
Bullwood Hall	180	178
Camp Hill	523	593
Canterbury	196	275
Cardiff	524	754
Castington	400	400
Channings Wood	634	659
Chelmsford	539	699
Coldingley	370	386
Dartmoor	618	627
Deerbolt	444	432
Doncaster	771	1,131
Dorchester	147	224
Dovegate	800	835
Dover	316	301
Durham	591	953
Edmunds Hill	366	366
Elmley	753	985
Erlestoke	426	425
Everthorpe	602	685
Exeter	316	495
Featherstone	599	607
Feltham	764	598
Ford	541	476
Forest Bank	800	1,062
Frankland	727	727
Full Sutton	592	582
Garth	584	613
Gartree	570	574
Glen Parva	668	806
Gloucester	225	295
Grendon/Spring Hill	574	527
Guys Marsh	520	571
Haslar	160	150
Haverigg	558	563
Hewell Grange	187	173
Highdown	643	744
Highpoint	792	810
Hindley	515	492
Hollesley Bay	330	311
Holme House	857	1,002
Hull	723	1,037
Huntercombe	360	357

Table 4: CNA and population by sex and establishment

31 May 2007

Establishment	In use CNA	Establishment Total
Kingston(Portsmouth)	199	196
Kirkham	588	546
Kirklevington	223	222
Lancaster	157	236
Lancaster Farms	480	528
Latchmere House	207	201
Leeds	678	1,018
Leicester	206	353
Lewes	458	521
Leyhill	512	400
Lincoln	444	586
Lindholme	982	989
Littlehey	663	695
Liverpool	1,128	1,345
Long Lartin	454	451
Lowdham Grange	640	637
Maidstone	559	587
Manchester	954	1,242
Moorland Open	260	229
Moorland	740	785
North Sea Camp	306	273
Northallerton	153	244
Norwich	535	595
Nottingham	379	549
Onley	640	631
Parc	838	1,128
Parkhurst	460	520
Pentonville	819	1,148
Peterborough	480	576
Portland	519	543
Preston	429	713
Ranby	912	1,038
Reading	190	269
Risley	1,038	1,080
Rochester	392	387
Rye Hill	600	647
Shepton Mallet	165	186
Shrewsbury	181	337
Stafford	680	676
Standford Hill	464	416
Stocken	595	619
Stoke Heath	574	650
Sudbury	563	523
Swaleside	756	777
Swansea	240	423
Swinfen Hall	600	617
The Mount	704	716
The Verne	558	585
The Wolds	320	373
Thorn Cross	322	241
Usk/Prescoed	317	406
Wakefield	748	744
Wandsworth	965	1,480
Warren Hill	222	207
Wayland	657	708
Wealstun	885	828
Wellingborough	636	644
Werrington	160	157
Wetherby	360	343
Whatton	698	753
Whitmoor	464	455
Winchester	378	542

Table 4: CNA and population by sex and establishment

31 May 2007

Establishment	In use CNA	Establishment Total
Woodhill	641	814
Wormwood Scrubs	1,173	1,266
Wymott	1,005	1,064
TOTAL	66,811	75,885
Police Cells	*	364
Males TOTAL in Custody	66,811	76,249
Females		
Askham Grange	126	98
Bronzefield	450	444
Cookham Wood	137	186
Downview	358	347
Drake Hall	315	239
East Sutton Park	98	99
Eastwood Park	326	348
Foston Hall	283	243
Holloway	487	451
Low Newton	285	255
Morton Hall	392	304
New Hall	393	372
Peterborough	360	344
Send	218	210
Styal	449	439
TOTAL	4,677	4,379
Police Cells	*	0
Females TOTAL in Custody	4,677	4,379
Males and Females TOTAL	71,288	80,628

In Use CNA - Certified Normal Accommodation that is available for immediate use, excludes damaged cells, cells affected by building works and cells taken out of use due to staff shortages

*As at 31 May 2007 there were up to 400 police cells available under operation safeguard which are not included in the CNA figure.