



Ministry of
JUSTICE

NOMS National Offender
Management Service

Working together to reduce re-offending

Population in Custody MONTHLY TABLES

June 2007
England and Wales

Population in custody June 2007 - Key points

RDS NOMS

Population in custody

- The population in custody on 30 June 2007 was 80,205, 2 per cent more than a year earlier. The population in prisons was 79,734, in Secure Training Centres (STCs) it was 259, and in Secure Children's Homes (SCHs) it was 212. No prisoners were being held in police cells.

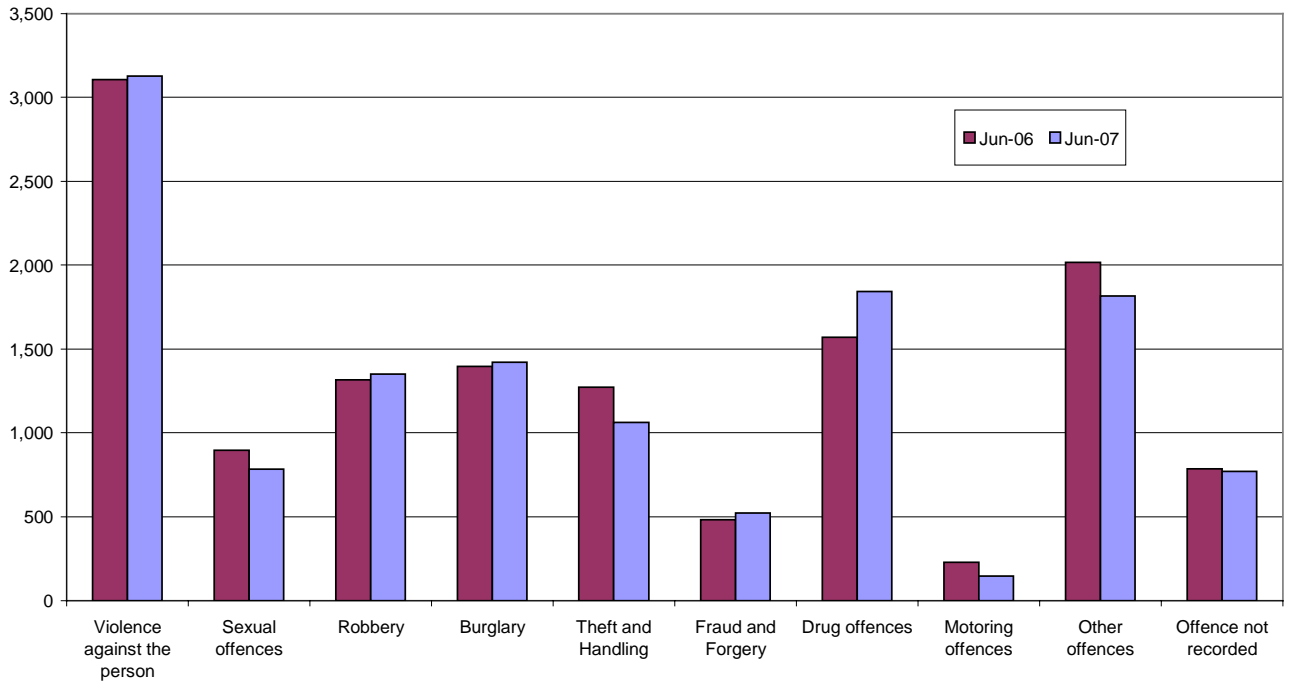
Population in prison

- The male prison population increased by 3 per cent to 75,451 and the female prison population decreased 4 per cent to 4,283.
- The remand population in prison decreased by 2 per cent to 12,844 in June 2007 compared to June 2006. Within this total, the untried population increased 4 per cent to 8,387 and the convicted unsentenced population decreased 11 per cent to 4,457.
- Amongst the remand population the largest percentage decreases since June 2006 were seen in motoring offences, theft and handling and sexual offences, which were down by 36, 16 and 12 per cent respectively. The largest increases were seen in drug offences and fraud and forgery, up 17 and 8 per cent respectively.
- There were 65,533 sentenced⁽¹⁾ prisoners at 30 June 2007, an increase of 3 per cent from a year earlier. The largest proportionate increase was for those sentenced to indeterminate sentences (Life sentences and Indeterminate sentences for Public Protection) which increased by 30 per cent. The introduction of the indeterminate sentence for public protection has also reduced the population serving determinate sentences of 4 years or more which fell by 2 per cent between June 2006 and June 2007.
- The population serving short sentences of less than 12 months fell by 10% from June 2006 to June 2007. This is due to the early release on 29 June of 884 prisoners on an End of Custody Licence. (It was announced on 19 June 2007 that certain prisoners serving between 4 weeks and 4 years may be released up to 18 days early.)
- Amongst the sentenced⁽¹⁾ prison population sexual offences, violence against the person and other offences saw the largest percentage increases up by 11, 9 and 8 per cent respectively from June 2006. The number of people serving sentences for motoring offences saw the largest percentage decrease since June 2006, down by 23 per cent.
- The adult population in prison was 67,851 at 30 June 2007, an increase of 2 per cent from a year earlier. The young adult population in prison also saw an increase over this time period, up by 8 per cent to 9,455 while the number of 15 to 17 year olds fell slightly to 2,428.
- The prison population was 112 per cent of the 'In Use CNA' (71,374) at 30 June 2007.
- This month, for the first time, the monthly brief includes information on the foreign national prisoner population. This information will be published on a quarterly basis.
- At 30 June 2007 there were 11,097 foreign nationals in prison establishments in England and Wales. This includes those held under the Immigration Act 1971 (including those in the immigration removal centres of Dover, Haslar and Lindholme) as well as those held on remand or serving custodial sentences.

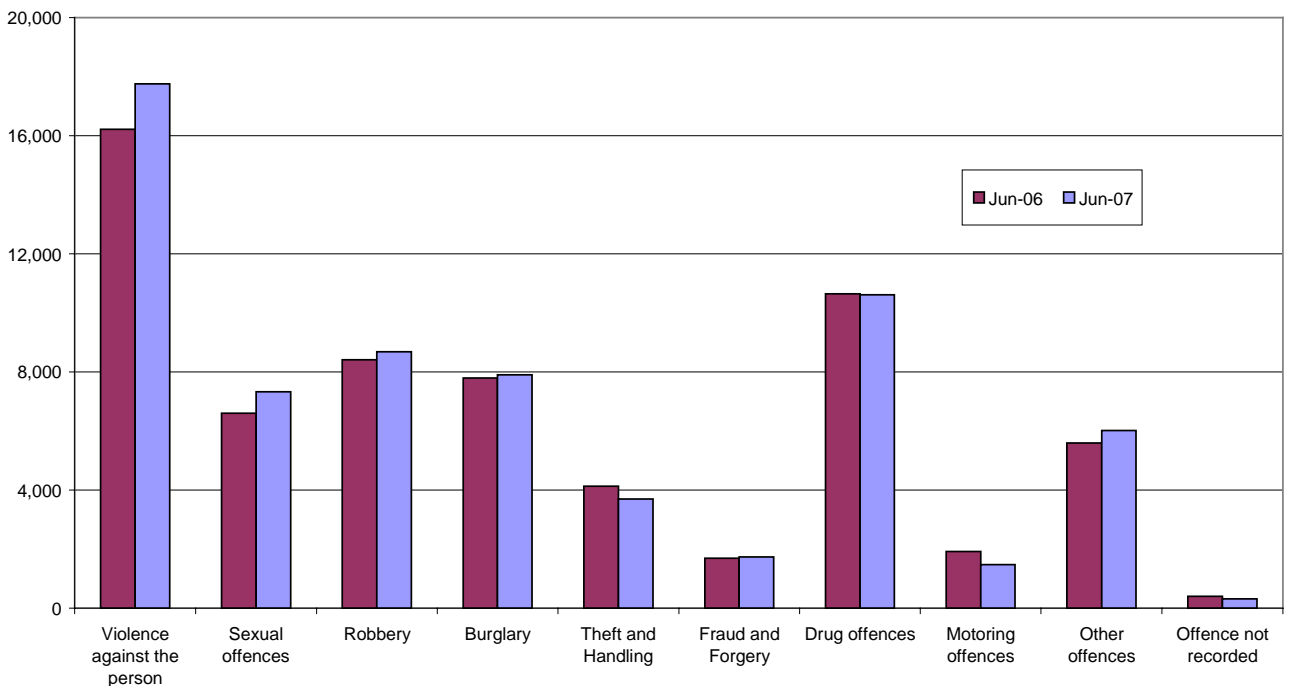
- The largest foreign national population at 30 June 2007 were Jamaican nationals, with a population of 1,374, followed by Nigeria (1,028), Republic of Ireland (638), Pakistan (389) and China (374).

(1) Includes recalls but excludes fine defaulters

Remand population by offence group



Immediate custodial sentenced population by offence group



NOTES

Data sources and quality

The data presented in this brief are drawn from the prison administrative IT systems. Although care is taken when processing and analysing the returns, the detail collected is subject to the inaccuracies inherent in any large-scale recording system. While the figures shown have been checked as far as practicable, they should be regarded as approximate and not necessarily accurate to the last whole number shown in the tables. They are fit to be used for purposes of looking at trends and for comparing the relative magnitude of components.

The prison population information has been drawn from two prison sources. The first source is the routine provision by prison establishments of records of the numbers of persons held in custody at the end of each month, broadly subdivided according to age, sex, custody type and sentence length. The records are collated and processed centrally, to produce the main estimates of the end of month population presented. The second source is the electronically held details for individual inmates such as date of birth, sex, religion, ethnic origin, custody type, offence, and reception and discharge dates and, for sentenced prisoners, sentence length. These data are collected on a central computer database and are used to produce the analyses by offence group and individual year of age. They form the basis of detailed population breakdowns, supplementing the aggregates derived from the first source, to which they are scaled for consistency. A new more detailed method of scaling this information was developed in 2004.

Because the detailed population breakdowns have been scaled and also rounded to the nearest whole number, individual components may not sum to the totals.

Information on the population in STCs and SCHs has been supplied by the Youth Justice Board.

All figures are provisional pending publication of the annual Prison and Probation Statistics volume.

Definitions

Population in custody - this includes those held in prison establishments, police cells under Operation Safeguard, secure training centres (STCs) and secure children's homes (SCHs). This is a change to previous outputs (notably Prison Population Monthly Brief and Prison Statistics England and Wales) where the reference to 'population in custody' just covered those held in prison establishments and police cells. All coverage is for England and Wales.

Population in prison – this includes those held in prisons in England and Wales, including the three removal centres of Dover, Haslar and Lindholme.

Sentenced population – this includes those sentenced to an immediate custodial sentence and fine defaulters.

Immediate custodial sentence – this does not include fine defaulters.

Adult prisoners – these are prisoners aged 21 years and over.

Young adults – these are prisoners aged 18 to 20, but including 21 year old prisoners who were aged 20 or under at conviction who have not been reclassified as part of the adult population

Indeterminate sentences – these cover life sentences and indeterminate sentences for public protection (IPP).

For further queries:

E-mail: esd@justice.gsi.gov.uk

Press enquiries - Press Office 020 7210 0638

Table 1: Population in custody: by type of custody and sex

	Jun-06			Jun-07			Percentage change 2006 to 2007		
	Males	Females	Total	Males	Females	Total	Males	Females	Total
All population in custody, of which	73,852	4,602	78,454	75,780	4,425	80,205	3	-4	2
Prisons	73,519	4,463	77,982	75,451	4,283	79,734	3	-4	2
Police cells	0	0	0	0	0	0	*	*	*
SCHs	182	43	225	172	40	212	-5	*	-6
STCs	151	96	247	157	102	259	4	6	5
All population in prison, of which	73,519	4,463	77,982	75,451	4,283	79,734	3	-4	2
Remand	12,165	902	13,067	11,953	891	12,844	-2	-1	-2
untried	7,554	510	8,064	7,795	592	8,387	3	16	4
convicted unsentenced	4,611	392	5,003	4,158	299	4,457	-10	-24	-11
Under sentence	59,981	3,512	63,493	62,250	3,351	65,601	4	-5	3
Fine defaulter	83	6	89	62	6	68	-25	*	-24
Less than or equal to 6 months	5,468	492	5,960	4,703	466	5,168	-14	-5	-13
Greater than 6 months to less than 12 months	2,273	252	2,525	2,250	211	2,462	-1	-16	-2
12 months to less than 4 years	20,327	1,292	21,619	21,601	1,239	22,840	6	-4	6
4 years or more (excluding Indeterminate sentences)	24,783	1,243	26,026	24,456	1,130	25,586	-1	-9	-2
Indeterminate sentences	7,047	227	7,274	9,178	299	9,477	30	32	30
Non-criminal prisoners	1,373	49	1,422	1,248	41	1,289	-9	*	-9
All adult population in prison, of which	62,818	3,986	66,804	64,064	3,787	67,851	2	-5	2
Remand	9,714	770	10,484	9,539	756	10,295	-2	-2	-2
untried	6,049	428	6,477	6,272	513	6,785	4	20	5
convicted unsentenced	3,665	342	4,007	3,267	243	3,510	-11	-29	-12
Under sentence	51,845	3,173	55,018	53,351	2,992	56,343	3	-6	2
Fine defaulter	79	5	84	58	6	64	-27	*	-24
Less than or equal to 6 months	4,210	429	4,639	3,390	367	3,757	-19	-14	-19
Greater than 6 months to less than 12 months	1,670	227	1,897	1,608	192	1,800	-4	-15	-5
12 months to less than 4 years	16,069	1,112	17,181	17,016	1,079	18,095	6	-3	5
4 years or more (excluding Indeterminate sentences)	23,142	1,187	24,329	22,766	1,065	23,831	-2	-10	-2
Indeterminate sentences	6,675	213	6,888	8,513	283	8,796	28	33	28
Non-criminal prisoners	1,259	43	1,302	1,174	39	1,213	-7	*	-7
All 15 -17 year olds in prison, of which	2,370	70	2,440	2,353	75	2,428	-1	7	0
Remand	555	19	574	525	19	544	-5	*	-5
untried	367	14	381	361	14	375	-2	*	-2
convicted unsentenced	188	5	194	164	5	169	-13	*	-13
Under sentence	1,814	50	1,865	1,826	56	1,882	1	12	1
Fine defaulter	0	0	0	0	0	0	*	*	*
Less than or equal to 6 months	468	13	481	457	20	477	-2	*	-1
Greater than 6 months to less than 12 months	254	6	261	258	3	261	2	*	0
12 months to less than 4 years	911	29	940	923	26	950	1	*	1
4 years or more (excluding Indeterminate sentences)	138	1	139	120	4	124	-13	*	-11
Indeterminate sentences	43	1	44	68	2	70	*	*	*
Non-criminal prisoners	1	0	1	2	0	2	*	*	*
All young adults in prison, of which	8,331	407	8,738	9,034	421	9,455	8	3	8
Remand	1,896	113	2,009	1,889	116	2,005	0	3	0

untried	1,138	68	1,206	1162	65	1,227	2	-4	2
convicted unsentenced	758	45	802	727	51	778	-4	*	-3
Under sentence	6,322	289	6,610	7,073	303	7,376	12	5	12
Fine defaulter	4	1	5	4	0	4	*	*	*
Less than or equal to 6 months	790	50	840	856	78	934	8	56	11
Greater than 6 months to less than 12 months	349	19	367	385	17	401	10	*	9
12 months to less than 4 years	3,347	151	3,498	3,662	134	3,795	9	-11	8
4 years or more (excluding Indeterminate sentences)	1,503	55	1,558	1,570	61	1,631	4	11	5
Indeterminate sentences	329	13	342	597	14	611	81	*	79
Non-criminal prisoners	113	6	119	72	2	74	-36	*	-38

Young adults are those aged 18 - 20 and those 21 year olds who were aged 20 or under at conviction who have not been reclassified as part of the adult population

* indicates that one or both of the comparative numbers are less than 50 which could give rise to misleading percentage changes

Data Sources and Quality

These figures have been drawn from administrative IT systems, which, as with any large scale recording system, are subject to possible errors with data entry and processing. See Data Sources and Quality section of report for more information.

Table 2: Population in prison by offence - remand and immediate custodial ser

	Jun-06		Jun-07		Percentage change 2006 to 2007	
	Remand	Immediate custodial sentence	Remand	Immediate custodial sentence	Remand	Immediate custodial sentence
All prisoners	13,067	63,404	12,844	65,533	-2	3
Violence against the person	3,105	16,215	3,127	17,748	1	9
Sexual offences	896	6,598	785	7,333	-12	11
Robbery	1,316	8,415	1,351	8,686	3	3
Burglary	1,396	7,791	1,421	7,904	2	1
Theft and Handling	1,272	4,125	1,063	3,700	-16	-10
Fraud and Forgery	482	1,692	522	1,738	8	3
Drug offences	1,570	10,647	1,843	10,611	17	0
Motoring offences	227	1,920	146	1,480	-36	-23
Other offences	2,017	5,594	1,816	6,018	-10	8
Offence not recorded	786	408	771	316	-2	-23
All male prisoners	12,165	59,898	11,953	62,188	-2	4
Violence against the person	2,981	15,537	2,967	17,057	0	10
Sexual offences	886	6,561	776	7,285	-12	11
Robbery	1,248	8,100	1,295	8,376	4	3
Burglary	1,342	7,563	1,372	7,709	2	2
Theft and Handling	1,093	3,691	949	3,326	-13	-10
Fraud and Forgery	414	1,456	453	1,511	9	4
Drug offences	1,407	9,484	1,647	9,569	17	1
Motoring offences	224	1,887	140	1,449	-38	-23
Other offences	1,868	5,242	1,670	5,620	-11	7
Offence not recorded	703	378	684	286	-3	-24
All female prisoners	902	3,506	891	3,345	-1	-5
Violence against the person	124	678	160	691	29	2

Table 2: Population in prison by offence - remand and immediate custodial ser

	Jun-06		Jun-07		Percentage change 2006 to 2007	
	Remand	Immediate custodial sentence	Remand	Immediate custodial sentence	Remand	Immediate custodial sentence
Sexual offences	11	37	9	48	*	*
Robbery	68	315	56	310	-18	-2
Burglary	54	228	49	195	*	-14
Theft and Handling	180	435	114	374	-37	-14
Fraud and Forgery	68	236	69	227	1	-4
Drug offences	163	1,163	196	1,042	20	-10
Motoring offences	3	33	6	31	*	*
Other offences	149	352	145	397	-3	13
Offence not recorded	83	30	87	30	5	*

Table 2: Population in prison by offence - remand and immediate custodial ser

	Jun-06		Jun-07		Percentage change 2006 to 2007	
	Remand	Immediate custodial sentence	Remand	Immediate custodial sentence	Remand	Immediate custodial sentence
All adult prisoners	10,484	54,934	10,295	56,279	-2	2
Violence against the person	2,439	13,977	2,445	15,180	0	9
Sexual offences	775	6,276	688	6,938	-11	11
Robbery	786	6,307	796	6,412	1	2
Burglary	1,111	6,724	1,116	6,713	0	0
Theft and Handling	1,064	3,478	860	3,071	-19	-12
Fraud and Forgery	442	1,628	495	1,684	12	3
Drug offences	1,385	9,946	1,616	9,863	17	-1
Motoring offences	189	1,623	121	1,271	-36	-22
Other offences	1,635	4,629	1,505	4,889	-8	6
Offence not recorded	658	346	652	257	-1	-26
All adult male prisoners	9,714	51,766	9,539	53,293	-2	3
Violence against the person	2,345	13,387	2,324	14,622	-1	9
Sexual offences	764	6,243	679	6,891	-11	10
Robbery	739	6,060	758	6,172	3	2
Burglary	1,066	6,517	1,072	6,532	1	0
Theft and Handling	899	3,069	760	2,726	-15	-11
Fraud and Forgery	379	1,402	427	1,466	13	5
Drug offences	1,241	8,855	1,441	8,869	16	0
Motoring offences	186	1,592	116	1,242	-38	-22
Other offences	1,512	4,319	1,384	4,543	-8	5
Offence not recorded	582	322	577	229	-1	-29
All adult female prisoners	770	3,168	756	2,986	-2	-6
Violence against the person	94	590	121	558	29	-5
Sexual offences	11	33	9	47	*	*

Table 2: Population in prison by offence - remand and immediate custodial ser

	Jun-06		Jun-07		Percentage change 2006 to 2007	
	Remand	Immediate custodial sentence	Remand	Immediate custodial sentence	Remand	Immediate custodial sentence
Robbery	48	247	38	240	*	-3
Burglary	45	207	45	181	*	-13
Theft and Handling	165	409	100	345	-39	-16
Fraud and Forgery	62	226	68	219	10	-3
Drug offences	144	1,091	175	994	22	-9
Motoring offences	3	31	5	29	*	*
Other offences	123	309	122	346	-1	12
Offence not recorded	76	24	75	28	-1	*

Table 2: Population in prison by offence - remand and immediate custodial ser

	Jun-06		Jun-07		Percentage change 2006 to 2007	
	Remand	Immediate custodial sentence	Remand	Immediate custodial sentence	Remand	Immediate custodial sentence
All aged 15-17	574	1,865	544	1,882	-5	1
Violence against the person	170	391	150	430	-12	10
Sexual offences	34	68	25	73	*	7
Robbery	137	503	149	507	9	1
Burglary	69	282	59	283	-14	0
Theft and Handling	41	192	37	191	*	-1
Fraud and Forgery	8	11	3	10	*	*
Drug offences	24	71	49	74	*	4
Motoring offences	4	69	5	44	*	*
Other offences	67	265	45	259	*	-2
Offence not recorded	21	13	21	12	*	*
All males aged 15-17	555	1,814	525	1,826	-5	1
Violence against the person	161	381	144	410	-11	8
Sexual offences	34	67	25	73	*	9
Robbery	134	486	148	493	10	1
Burglary	67	275	59	281	-12	2
Theft and Handling	40	189	35	185	*	-2
Fraud and Forgery	8	11	3	9	*	*
Drug offences	24	68	47	71	*	4
Motoring offences	4	69	4	44	*	*
Other offences	64	258	43	250	*	-3
Offence not recorded	20	12	17	10	*	*
All females aged 15-17	19	50	19	56	*	12
Violence against the person	9	11	6	20	*	*
Sexual offences	0	1	0	0	*	*

Table 2: Population in prison by offence - remand and immediate custodial ser

	Jun-06		Jun-07		Percentage change 2006 to 2007	
	<i>Remand</i>	<i>Immediate custodial sentence</i>	<i>Remand</i>	<i>Immediate custodial sentence</i>	<i>Remand</i>	<i>Immediate custodial sentence</i>
Robbery	3	17	1	13	*	*
Burglary	2	7	0	2	*	*
Theft and Handling	1	3	2	6	*	*
Fraud and Forgery	0	0	0	1	*	*
Drug offences	0	4	2	3	*	*
Motoring offences	0	0	1	0	*	*
Other offences	3	8	2	9	*	*
Offence not recorded	1	1	4	2	*	*

Table 2: Population in prison by offence - remand and immediate custodial ser

	Jun-06		Jun-07		Percentage change 2006 to 2007	
	Remand	Immediate custodial sentence	Remand	Immediate custodial sentence	Remand	Immediate custodial sentence
All young adults	2,009	6,605	2,005	7,372	0	12
Violence against the person	496	1,847	532	2,139	7	16
Sexual offences	88	254	71	322	-19	27
Robbery	392	1,604	405	1,767	3	10
Burglary	216	786	245	908	13	16
Theft and Handling	168	455	166	437	-1	-4
Fraud and Forgery	33	53	24	44	*	*
Drug offences	161	630	178	673	11	7
Motoring offences	34	228	20	165	*	-28
Other offences	315	700	265	870	-16	24
Offence not recorded	107	49	98	46	-8	*
All male young adults	1,896	6,318	1,889	7,069	0	12
Violence against the person	475	1,769	499	2,025	5	14
Sexual offences	88	251	71	321	-19	28
Robbery	375	1,553	389	1,711	4	10
Burglary	209	771	242	896	16	16
Theft and Handling	154	433	154	414	0	-4
Fraud and Forgery	28	44	23	37	*	*
Drug offences	141	561	158	628	12	12
Motoring offences	34	226	20	163	*	-28
Other offences	292	665	244	827	-16	24
Offence not recorded	101	44	90	46	-11	*
All female young adults	113	288	116	303	3	5
Violence against the person	21	78	33	114	*	46
Sexual offences	0	3	0	1	*	*

Table 2: Population in prison by offence - remand and immediate custodial ser

	Jun-06		Jun-07		Percentage change 2006 to 2007	
	Remand	Immediate custodial sentence	Remand	Immediate custodial sentence	Remand	Immediate custodial sentence
Robbery	17	51	16	57	*	12
Burglary	7	15	4	11	*	*
Theft and Handling	14	23	12	23	*	*
Fraud and Forgery	5	9	1	7	*	*
Drug offences	19	69	20	45	*	*
Motoring offences	0	2	0	2	*	*
Other offences	23	35	21	43	*	*
Offence not recorded	6	5	9	0	*	*

* indicates that one or both of the comparative numbers are less than 50 which could give rise to misleading percentage changes

Data Sources and Quality

These figures have been drawn from administrative IT systems, which, as with any large scale recording system, are subject to possible errors with data entry and processing. See Data Sources and Quality section of report for more information.

Table 3: Young population in prison: by type of custody and sex

30 June 2007

	15	16	17	Total - under 18	18	19	20	21	Total Young Adults
All young population in prisons, of which									
<i>Prisoners on remand</i>	63	133	348	544	636	675	615	79	2,005
untried	38	98	239	375	392	398	382	55	1,227
convicted unsentenced	25	35	109	169	243	277	233	24	778
<i>Prisoners under sentence</i>	218	595	1,069	1,882	1,603	2,409	2,627	737	7,376
Fine defaulter	0	0	0	0	2	1	1	0	4
Immediate custodial sentence	218	595	1,069	1,882	1,601	2,408	2,626	737	7,372
<i>Non-criminal prisoners</i>	0	0	2	2	10	20	22	23	74
All young male population in prisons, of which	0	0	0	0	0	0	0	0	0
<i>Prisoners on remand</i>	63	133	329	525	588	643	585	73	1,889
untried	38	98	225	361	363	381	369	51	1,162
convicted unsentenced	25	35	104	164	225	263	217	22	727
<i>Prisoners under sentence</i>	218	595	1,013	1,826	1,533	2,317	2,508	714	7,073
Fine defaulter	0	0	0	0	2	1	1	0	4
Immediate custodial sentence	218	595	1,013	1,826	1,531	2,316	2,507	714	7,069
<i>Non-criminal prisoners</i>	0	0	2	2	10	18	22	23	72
All young female population in prisons, of which	0	0	0	0	0	0	0	0	0
<i>Prisoners on remand</i>	0	0	19	19	48	32	30	6	116
untried	0	0	14	14	30	18	13	4	65
convicted unsentenced	0	0	5	5	18	14	17	3	51
<i>Prisoners under sentence</i>	0	0	56	56	69	93	119	23	303
Fine defaulter	0	0	0	0	0	0	0	0	0
Immediate custodial sentence	0	0	56	56	69	93	119	23	303
<i>Non-criminal prisoners</i>	0	0	0	0	0	2	0	0	2

Young adults are those aged 18 - 20 and those 21 year olds who were aged 20 or under at conviction who have not been reclassified as part of the adult population

Data Sources and Quality

These figures have been drawn from administrative IT systems, which, as with any large scale recording system, are subject to possible errors with data entry and processing. See Data Sources and Quality section of report for more information.

Table 4: CNA and population by sex and establishment

30 June 2007

Establishment	In use CNA	Establishment Total	Of which:		
			Foreign nationals	UK nationals	Nationality not recorded
Males					
Acklington	854	844	23	821	0
Albany	526	520	51	464	5
Altcourse	614	1,099	53	1,031	15
Ashfield	400	385	30	347	8
Ashwell	535	539	73	464	2
Aylesbury	437	441	87	354	0
Bedford	324	468	115	346	7
Belmarsh	799	910	250	645	15
Birmingham	1,121	1,450	169	1,249	31
Blakenhurst	821	1,058	150	895	13
Blantyre House	122	121	1	119	1
Blundeston	421	463	84	377	2
Brinsford	473	473	40	433	0
Bristol	420	585	63	512	10
Brixton	606	791	251	520	20
Brockhill	170	162	22	140	0
Buckley Hall	350	383	35	347	1
Bullingdon	759	955	140	811	4
Bullwood Hall	180	181	172	4	5
Camp Hill	523	595	76	517	2
Canterbury	196	278	264	13	1
Cardiff	524	745	64	673	8
Castington	400	386	14	370	2
Channings Wood	634	657	34	623	0
Chelmsford	541	690	134	535	21
Coldingley	370	388	87	300	1
Dartmoor	619	627	39	587	1
Deerbolt	444	417	13	403	1
Doncaster	771	1,126	112	963	51
Dorchester	147	241	19	218	4
Dovegate	800	838	107	731	0
Dover ¹	316	299	294	0	5
Durham	591	950	44	899	7
Edmunds Hill	366	360	64	294	2
Elmley	753	977	184	779	14
Erlestoke	426	424	56	368	0
Everthorpe	602	665	17	648	0
Exeter	316	481	33	442	6
Featherstone	599	613	48	564	1
Feltham	764	599	148	419	32
Ford	541	464	30	434	0
Forest Bank	800	1,047	80	943	24

Table 4: CNA and population by sex and establishment

30 June 2007

Establishment	In use CNA	Establishment Total	Of which:		
			Foreign nationals	UK nationals	Nationality not recorded
Frankland	727	725	43	682	0
Full Sutton	592	586	43	542	1
Garth	584	614	42	571	1
Gartree	570	574	42	532	0
Glen Parva	668	813	55	755	2
Gloucester	225	276	26	237	13
Grendon (Spring Hill)	574	530	13	517	0
Guys Marsh	520	570	72	498	0
Haslar ¹	160	121	116	0	5
Haverigg	558	563	15	548	0
Hewell Grange	187	167	2	165	0
Highdown	643	740	182	532	27
Highpoint	792	806	190	614	2
Hindley	515	502	16	482	4
Hollesley Bay (Warren Hill)	330	298	13	285	0
Holme House	857	972	58	911	3
Hull	723	1,023	68	949	6
Huntercombe	360	359	52	302	5
Kennet	50	20	1	19	0
Kingston (Portsmouth)	199	199	21	177	1
Kirkham	590	514	4	510	0
Kirklevington	223	222	0	222	0
Lancaster	157	227	1	226	0
Lancaster Farms	480	530	17	504	9
Latchmere House	207	206	8	198	0
Leeds	678	996	78	912	6
Leicester	206	348	69	268	11
Lewes	458	522	80	432	10
Leyhill	512	411	21	390	0
Lincoln	444	645	72	564	10
Lindholme ¹	982	982	110	830	41
Littlehey	663	699	116	583	0
Liverpool	1,128	1,329	68	1,257	4
Long Lartin	454	443	76	366	1
Lowdham Grange	640	660	86	574	0
Maidstone	558	582	136	444	2
Manchester	954	1,218	197	976	45
Moorland Open	260	242	4	238	0
Moorland	740	779	33	746	0
North Sea Camp	306	272	8	264	0
Northallerton	153	249	5	244	0
Norwich	507	567	57	504	6
Nottingham	379	528	46	472	10

Table 4: CNA and population by sex and establishment

30 June 2007

Establishment	In use CNA	Establishment Total	Of which:		
			Foreign nationals	UK nationals	Nationality not recorded
Onley	640	618	66	551	1
Parc	706	1,112	48	1,056	8
Parkhurst	462	522	75	442	5
Pentonville	819	1,142	380	742	20
Peterborough	480	559	76	466	17
Portland	519	542	73	466	3
Preston	429	707	45	656	6
Ranby	912	1,018	91	910	16
Reading	182	262	25	233	4
Risley	1,038	1,082	76	1,005	1
Rochester	392	387	52	334	1
Rye Hill	600	646	124	521	1
Shepton Mallet	165	187	6	181	0
Shrewsbury	181	326	32	292	2
Stafford	680	675	50	625	0
Standford Hill	464	405	34	371	0
Stocken	595	624	60	562	2
Stoke Heath	574	673	37	631	4
Sudbury	563	533	11	522	0
Swaleside	756	778	166	610	2
Swansea	240	412	29	380	3
Swinfen Hall	600	619	36	582	1
The Mount	704	717	300	417	0
Verne	558	592	384	208	0
Wolds	320	378	19	359	0
Thorn Cross	322	240	0	238	2
Usk (Prescoed)	317	417	14	403	0
Wakefield	748	744	53	689	2
Wandsworth	965	1,473	424	986	63
Warren Hill	222	212	14	186	12
Wayland	657	699	118	579	2
Wealstun	885	800	38	762	0
Wellingborough	636	636	115	520	1
Werrington	160	146	5	136	6
Wetherby	360	354	11	338	5
Whatton	698	759	66	693	0
Whitmoor	464	463	71	391	1
Winchester	378	540	79	458	3
Woodhill	641	828	151	657	20
Wormwood Scrubs	1,173	1,243	511	707	24
Wymott	1,005	1,057	38	1,018	1
TOTAL	66,698	75,451	10,133	64,531	787
Police Cells	*	0	0	0	0

Table 4: CNA and population by sex and establishment

30 June 2007

Establishment		In use CNA	Establishment Total	Of which:		
				<i>Foreign nationals</i>	<i>UK nationals</i>	<i>Nationality not recorded</i>
Males	TOTAL in Custody	66,698	75,451	10,133	64,531	787

Table 4: CNA and population by sex and establishment

30 June 2007

Establishment	In use CNA	Establishment Total	Of which:			
			Foreign nationals	UK nationals	Nationality not recorded	
Females						
Askham Grange	126	109	5	104	0	
Bronzeield	450	444	156	242	46	
Cookham Wood	137	180	44	131	6	
Downview	358	342	113	227	2	
Drake Hall	315	231	50	181	0	
East Sutton Park	98	100	11	89	0	
Eastwood Park	326	339	35	298	6	
Foston Hall	283	228	15	210	3	
Holloway	487	451	147	294	10	
Low Newton	285	233	9	223	1	
Morton Hall	392	315	241	74	0	
New Hall	393	356	24	326	6	
Peterborough	360	327	39	283	5	
Send	217	195	31	162	2	
Styal	449	433	44	384	5	
TOTAL	4,676	4,283	963	3,230	90	
Police Cells	*	0	0	0	0	
Females	TOTAL in Custody	4,676	4,283	963	3,230	90
Males and Females:						
TOTAL		71,374	79,734	11,097	67,760	877

In Use CNA - Certified Normal Accommodation that is available for immediate use, excludes damaged cells, cells affected by building works and cells taken out of use due to staff shortages

¹ Dover, Haslar and part of Lindholme are immigration removal centres, which do not hold those serving custodial sentences or those on remand.

* There are currently up to 400 police cells available under operation safeguard which are not included in the CNA figure.

Data Sources and Quality

These figures have been drawn from administrative IT systems, which, as with any large scale recording system, are subject to possible errors with data entry and processing. See Data Sources and Quality section of report for more information.

Table 5: Population in prison by nationality and sex

30 June 2007

Nationality	Male	Female	Total	Nationality	Male	Female	Total
All nationalities	75,451	4,283	79,734				
UK nationals	64,531	3,230	67,760				
Foreign nationals	10,133	963	11,097				
Not recorded	787	90	877				
Total Africa	2,821	381	3,202	Total Europe	2,918	229	3,148
Angola	84	4	88	Albania	163	2	165
Burundi	16	1	17	Armenia	6	0	6
Dahomey (Benin)	3	0	3	Austria	9	2	11
Botswana	3	0	3	Azerbaijan	2	0	2
Ivory Coast	27	2	29	Bosnia-Herzegovina	6	2	8
Central African Republic	12	1	13	Belgium	44	3	47
Congo	109	8	117	Bulgaria	12	14	26
Cameroon, United Republic	41	2	43	Croatia	7	1	8
Cape Verde	1	0	1	Switzerland	5	0	5
Djibouti	1	0	1	Czech Republic	48	5	53
Algeria	178	1	179	Cyprus	50	1	51
Egypt	12	0	12	Germany	112	16	127
Ethiopia	58	1	59	Denmark	10	0	10
Ghana	174	33	207	Estonia	15	1	16
Gambia	41	4	46	Spain	59	13	72
Guinea	16	1	17	Finland	4	0	4
Equatorial Guinea	1	0	1	France	154	18	171
Guinea/Bissau	3	0	3	Georgia	15	1	16
Kenya	60	10	70	Gibraltar	3	1	4
Liberia	24	4	28	Greece	14	4	18
Libya	21	0	21	Hungary	20	2	22
Morocco	44	1	45	Irish Republic	605	33	638
Mali	5	0	5	Italy	92	10	102
Mauritania	2	0	2	Kazakhstan	4	0	4
Mauritius	17	0	17	Kyrgyzstan	3	0	3
Malawi	9	0	9	Lithuania	182	10	192
Mozambique	2	0	2	Latvia	55	3	58
Namibia	3	1	4	Moldova	27	1	28
Niger	4	0	4	Macedonia	8	0	8
Nigeria	844	184	1,028	Serbia and Montenegro	99	0	99
Rwanda	22	0	22	Malta	6	0	6
Seychelles	2	0	2	Netherlands	100	26	125
Sudan	45	0	45	Norway	8	0	8

Table 5: Population in prison by nationality and sex

30 June 2007

Nationality	Male	Female	Total	Nationality	Male	Female	Total
All nationalities	75,451	4,283	79,734				
UK nationals	64,531	3,230	67,760				
Foreign nationals	10,133	963	11,097				
Not recorded	787	90	877				
Sierre Leone	93	12	105	Poland	301	19	320
Senegal	6	0	6	Portugal	178	6	184
Somalia	334	10	344	Romania	145	17	162
Chad	2	0	2	Sweden	13	4	17
Togo	8	2	10	Slovakia	20	2	22
Tunisia	16	0	16	San Marino	1	0	1
Tanzania	19	1	20	Slovenia	5	0	5
Uganda	71	9	79	Russia	95	12	107
Western Sahara	2	0	2	Turkey	210	2	212
South Africa	158	57	215	Turkmenistan	2	0	2
Zambia	14	1	15	Uzbekistan	2	1	3
Congo, Democratic Republic	36	1	37				
Zimbabwe	174	31	205				

Table 5: Population in prison by nationality and sex

30 June 2007

Nationality	Male	Female	Total	Nationality	Male	Female	Total
All nationalities	75,451	4,283	79,734				
UK nationals	64,531	3,230	67,760				
Foreign nationals	10,133	963	11,097				
Not recorded	787	90	877				
				Total Middle East	665	5	670
Total Asia	1,761	131	1,892	United Arab Emirates	7	0	7
Bangladesh	157	3	160	Afghanistan	94	0	94
Burma	3	0	3	Bahrain	2	0	2
China	331	43	374	Iran	201	3	203
Hong Kong	9	0	9	Israel	26	0	26
Indonesia	3	0	3	Iraq	256	1	257
India	279	7	285	Jordan	13	0	13
Japan	2	1	3	Kuwait	14	0	14
Korean Dem Peoples Rep (Nth)	1	0	1	Lebanon	16	1	17
Korea Republic of (Sth)	5	1	6	Oman	1	0	1
Sri Lanka	153	2	155	Qatar	1	0	1
Mongolia	9	2	11	Saudi Arabia	18	0	18
Malaysia	23	4	27	Syrian Arab Republic	6	0	6
Philippines	13	2	15	Yemen, Republic of	10	0	10
Pakistan	375	13	389				
Singapore	5	2	7	Total North America	110	14	124
Thailand	2	4	6	Canada	22	5	27
East Timor (Portuguese)	1	0	1	United States of America	88	9	97
Taiwan (Nationalist Chinese)	0	1	1				
Vietnam	391	47	437	Total Oceania	44	2	46
				Australia	24	2	26
Total Central and South America	314	56	371	Fiji	11	0	11
Argentina	3	2	5	French Southern Territories	1	0	1
Bolivia	8	2	10	Kiribati	1	0	1
Brazil	73	22	96	New Zealand	6	0	6
Belize	1	0	1	Papua New Guinea	1	0	1
Chile	12	1	13				
Columbia	108	6	114	West Indies	1,494	145	1,639
Costa Rica	2	0	2	Aruba	1	0	1
Ecuador	9	1	10	Anguilla	3	0	3
French Guyana	2	0	2	Netherlands Antilles	14	5	19
Guatemala	4	0	4	Barbados	26	2	28
Guyana	30	7	37	Bermuda	4	0	4

Table 5: Population in prison by nationality and sex

30 June 2007

Nationality	Male	Female	Total	Nationality	Male	Female	Total
All nationalities	75,451	4,283	79,734				
UK nationals	64,531	3,230	67,760				
Foreign nationals	10,133	963	11,097				
Not recorded	787	90	877				
Honduras	1	0	1	Bahamas	4	0	4
Mexico	19	5	24	Cuba	3	0	3
Panama	2	1	3	Dominica	10	1	11
Peru	7	0	7	Dominican Republic	5	3	8
Paraguay	0	1	1	Grenada	15	4	19
Surinam	8	1	9	Haiti	1	0	1
El Salvador	0	2	2	Jamaica	1,276	97	1,374
Uruguay	1	0	1	St Lucia	33	7	40
Venezuela	23	5	28	Montserrat	15	1	16
Total Other	6	0	6	St Christopher & Nevis	1	0	1
				St Kitts and Nevis	1	1	2
				Trinidad and Tobago	69	21	89
Total unrecorded	787	90	877	St Vincent & The Grenadines	12	3	15

Data Sources and Quality

These figures have been drawn from administrative IT systems, which, as with any large scale recording system, are subject to possible errors with data entry and processing. See Data Sources and Quality section of report for more information.