



Ministry of  
**JUSTICE**

**Population in custody  
monthly tables  
July 2008  
England and Wales**

Ministry of Justice  
Statistics bulletin

Published 29 August 2008

## Population in custody July 2008 - Key points

### Population in custody

- The population in custody on 31 July 2008 was 84,139, 4 per cent more than a year earlier. The population in prisons was 83,495, in Secure Training Centres (STCs) it was 244, and in Secure Children's Homes (SCHs) it was 216.

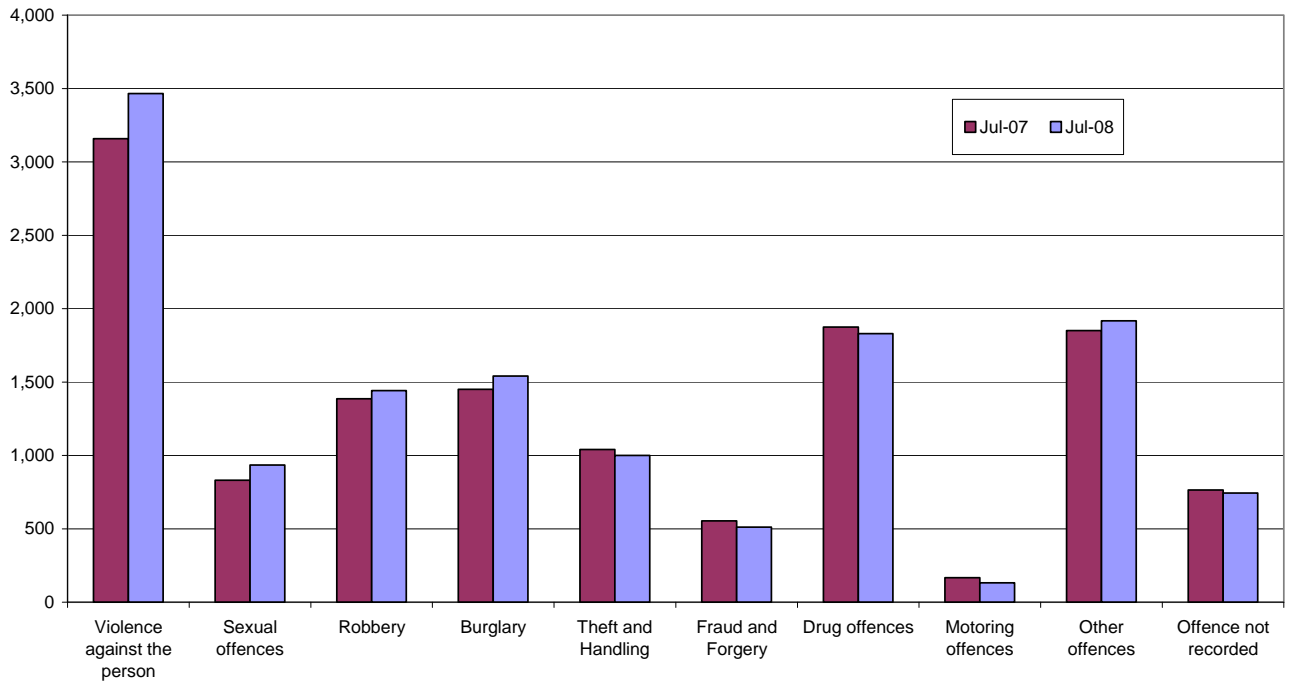
### Population in prison

- The male prison population increased by 4 per cent to 79,046 and the female prison population increased 2 per cent to 4,449.
- The remand population in prison increased by 3 per cent to 13,512 in July 2008 compared to July 2007. Within this total, the untried population increased 2 per cent to 8,714 and the convicted unsentenced population also increased 7 per cent, to 4,798.
- Amongst the remand population the largest percentage increases since July 2007 were seen in sexual offences and violence against the person, up by 12 and 10 per cent respectively. Decreases were seen in motoring, fraud and forgery and theft and handling, down by 21, 8 and 4 per cent respectively.
- There were 68,458 sentenced<sup>(1)</sup> prisoners at 31 July 2008, an increase of 4 per cent from a year earlier. The largest proportionate increase since July 2007 was for those serving indeterminate sentences (Life sentences and Indeterminate sentences for Public Protection) which increased by 19 per cent.
- Amongst the sentenced<sup>(1)</sup> prison population fraud and forgery, violence against the person and other offences saw the largest percentage increases, up by 13, 8 and 7 per cent from July 2007. The number of people serving sentences for motoring offences saw a decrease since July 2007, down by 5 per cent.
- The adult population in prison was 71,363 at 31 July 2008, an increase of 5 per cent from a year earlier. Over the same time period the young adults saw an increase of 3 per cent to 9,699 and the 15 to 17 year olds saw a decrease of 2 per cent to 2,433.
- The prison population was 113 per cent of the 'In Use CNA' (73,601) at 31 July 2008.

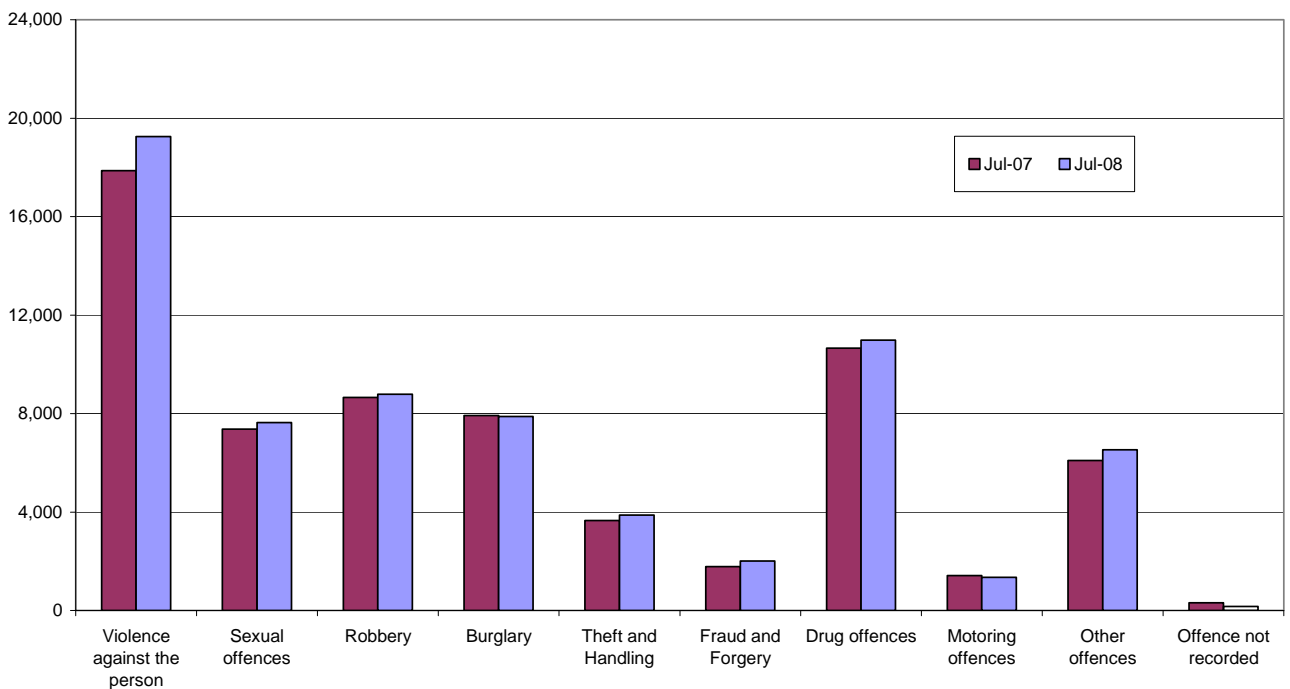
---

(1) Includes recalls and excludes fine defaulters

**Figure A: Remand population by offence group**



**Figure B: Immediate custodial sentenced population by offence group**



## NOTES

### Data sources and quality

The data presented in this brief are drawn from the prison administrative IT systems. Although care is taken when processing and analysing the returns, the detail collected is subject to the inaccuracies inherent in any large-scale recording system. While the figures shown have been checked as far as practicable, they should be regarded as approximate and not necessarily accurate to the last whole number shown in the tables. They are fit to be used for purposes of looking at trends and for comparing the relative magnitude of components.

The prison population information has been drawn from two prison sources. The first source is the routine provision by prison establishments of records of the numbers of persons held in custody at the end of each month, broadly subdivided according to age, sex, custody type and sentence length. The records are collated and processed centrally, to produce the main estimates of the end of month population presented. The second source is the electronically held details for individual inmates such as date of birth, sex, religion, ethnic origin, custody type, offence, and reception and discharge dates and, for sentenced prisoners, sentence length. These data are collected on a central computer database and are used to produce the analyses by offence group and individual year of age. They form the basis of detailed population breakdowns, supplementing the aggregates derived from the first source, to which they are scaled for consistency. A new more detailed method of scaling this information was developed in 2004.

Because the detailed population breakdowns have been scaled and also rounded to the nearest whole number, individual components may not sum to the totals.

Information on the population in STCs and SCHs has been supplied by the Youth Justice Board.

All figures are provisional pending publication of the annual Offender Management Caseload Statistics.

### Definitions

Population in custody - this includes those held in prison establishments, police cells under Operation Safeguard, secure training centres (STCs) and secure children's homes (SCHs). This is a change to previous outputs (notably Prison Population Monthly Brief and Prison Statistics England and Wales) where the reference to 'population in custody' just covered those held in prison establishments and police cells. All coverage is for England and Wales.

Population in prison – this includes those held in prisons in England and Wales, including the three removal centres of Dover, Haslar and Lindholme.

Sentenced population – this includes those sentenced to an immediate custodial sentence and fine defaulters.

Immediate custodial sentence – this does not include fine defaulters.

Adult prisoners – these are prisoners aged 21 years and over.

Young adults – these are prisoners aged 18 to 20, but including 21 year old prisoners who were aged 20 or under at conviction who have not been reclassified as part of the adult population

Indeterminate sentences – these cover life sentences and indeterminate sentences for public protection (IPP).

### **Contact points for further information**

Current and previous editions of this publication are available for download at <http://www.justice.gov.uk/publications/populationincustody.htm> . Future reports will be published on a monthly basis. Spreadsheet files of the tables contained in this document are also available for download from this address.

Press enquiries should be directed to the Ministry of Justice press office:

Tel: 020 7210 8822

Email: [press.office@justice.gsi.gov.uk](mailto:press.office@justice.gsi.gov.uk)

Other enquiries about these statistics should be directed to:

Ministry of Justice  
Offender Management and Sentencing – Analytical Services  
2<sup>nd</sup> Floor Fry Building  
2 Marsham Street  
London  
SW1P 4DF  
Tel: 020 7035 3470

General enquiries about the statistical work of the Ministry of Justice can be e-mailed to: [statistics.enquiries@justice.gsi.gov.uk](mailto:statistics.enquiries@justice.gsi.gov.uk)

General information about the official statistics system of the UK is available from [www.statistics.gov.uk](http://www.statistics.gov.uk)

© Crown copyright  
Produced by the Ministry of Justice

Alternative formats are available on request from [statistics.enquiries@justice.qsi.gov.uk](mailto:statistics.enquiries@justice.qsi.gov.uk)

**Table 1: Population in custody: by type of custody and sex**

	Jul-07			Jul-08			Percentage change 2007 to 2008		
	Males	Females	Total	Males	Females	Total	Males	Females	Total
<b>All population in custody, of which</b>	<b>76,285</b>	<b>4,519</b>	<b>80,804</b>	<b>79,546</b>	<b>4,593</b>	<b>84,139</b>	<b>4</b>	<b>2</b>	<b>4</b>
Prisons	75,805	4,359	80,164	79,046	4,449	83,495	4	2	4
Police cells	162	0	162	184	0	184	*	*	*
SCHs	173	53	226	174	42	216	1	*	-4
STCs	145	107	252	142	102	244	-2	-5	-3
<b>All population in prison, of which</b>	<b>75,805</b>	<b>4,359</b>	<b>80,164</b>	<b>79,046</b>	<b>4,449</b>	<b>83,495</b>	<b>4</b>	<b>2</b>	<b>4</b>
<b>Remand</b>	<b>12,148</b>	<b>921</b>	<b>13,069</b>	<b>12,626</b>	<b>886</b>	<b>13,512</b>	<b>4</b>	<b>-4</b>	<b>3</b>
untried	7,962	618	8,580	8,132	582	8,714	2	-6	2
convicted unsentenced	4,186	303	4,489	4,494	304	4,798	7	0	7
<b>Under sentence</b>	<b>62,417</b>	<b>3,383</b>	<b>65,800</b>	<b>65,072</b>	<b>3,495</b>	<b>68,567</b>	<b>4</b>	<b>3</b>	<b>4</b>
Fine defaulter	68	6	74	99	10	109	46	*	47
Less than or equal to 6 months	4,825	488	5,313	5,462	519	5,981	13	6	13
Greater than 6 months to less than 12 months	2,260	202	2,461	2,558	267	2,825	13	32	15
12 months to less than 4 years	21,490	1,247	22,737	22,552	1,315	23,867	5	5	5
4 years or more (excluding Indeterminate sentences)	24,423	1,132	25,555	23,254	1,035	24,289	-5	-9	-5
Indeterminate sentences	9,352	308	9,660	11,147	349	11,496	19	13	19
<b>Non-criminal prisoners</b>	<b>1,240</b>	<b>55</b>	<b>1,295</b>	<b>1,348</b>	<b>68</b>	<b>1,416</b>	<b>9</b>	<b>24</b>	<b>9</b>
<b>All adult population in prison, of which</b>	<b>64,405</b>	<b>3,869</b>	<b>68,274</b>	<b>67,396</b>	<b>3,967</b>	<b>71,363</b>	<b>5</b>	<b>3</b>	<b>5</b>
<b>Remand</b>	<b>9,677</b>	<b>788</b>	<b>10,465</b>	<b>10,135</b>	<b>776</b>	<b>10,911</b>	<b>5</b>	<b>-2</b>	<b>4</b>
untried	6,392	537	6,929	6,569	515	7,084	3	-4	2
convicted unsentenced	3,285	251	3,536	3,566	261	3,827	9	4	8
<b>Under sentence</b>	<b>53,580</b>	<b>3,029</b>	<b>56,609</b>	<b>56,024</b>	<b>3,132</b>	<b>59,156</b>	<b>5</b>	<b>3</b>	<b>4</b>
Fine defaulter	66	6	72	96	10	106	45	*	47
Less than or equal to 6 months	3,568	404	3,972	4,189	441	4,630	17	9	17
Greater than 6 months to less than 12 months	1,624	183	1,807	1,869	229	2,098	15	25	16
12 months to less than 4 years	16,925	1,084	18,009	17,925	1,157	19,082	6	7	6
4 years or more (excluding Indeterminate sentences)	22,732	1,062	23,794	21,600	967	22,567	-5	-9	-5
Indeterminate sentences	8,665	290	8,955	10,345	328	10,673	19	13	19
<b>Non-criminal prisoners</b>	<b>1,148</b>	<b>52</b>	<b>1,200</b>	<b>1,237</b>	<b>59</b>	<b>1,296</b>	<b>8</b>	<b>13</b>	<b>8</b>
<b>All 15 - 17 year olds in prison, of which</b>	<b>2,393</b>	<b>79</b>	<b>2,472</b>	<b>2,363</b>	<b>70</b>	<b>2,433</b>	<b>-1</b>	<b>-11</b>	<b>-2</b>
<b>Remand</b>	<b>526</b>	<b>18</b>	<b>545</b>	<b>533</b>	<b>17</b>	<b>549</b>	<b>1</b>	<b>*</b>	<b>1</b>
untried	336	11	347	351	8	359	4	*	3
convicted unsentenced	190	8	197	182	8	190	-4	*	-3
<b>Under sentence</b>	<b>1,865</b>	<b>60</b>	<b>1,925</b>	<b>1,829</b>	<b>53</b>	<b>1,882</b>	<b>-2</b>	<b>-11</b>	<b>-2</b>
Fine defaulter	0	0	0	0	0	0	*	*	*
Less than or equal to 6 months	470	22	492	437	20	457	-7	*	-7
Greater than 6 months to less than 12 months	283	2	285	276	5	281	-3	*	-1
12 months to less than 4 years	923	27	951	891	23	914	-4	*	-4
4 years or more (excluding Indeterminate sentences)	118	6	124	151	6	156	28	*	26
Indeterminate sentences	70	3	74	74	0	74	5	*	0
<b>Non-criminal prisoners</b>	<b>2</b>	<b>0</b>	<b>2</b>	<b>1</b>	<b>0</b>	<b>1</b>	<b>*</b>	<b>*</b>	<b>*</b>
<b>All young adults in prison, of which</b>	<b>9,007</b>	<b>411</b>	<b>9,418</b>	<b>9,287</b>	<b>412</b>	<b>9,699</b>	<b>3</b>	<b>0</b>	<b>3</b>
<b>Remand</b>	<b>1,945</b>	<b>115</b>	<b>2,059</b>	<b>1,958</b>	<b>93</b>	<b>2,052</b>	<b>1</b>	<b>-19</b>	<b>0</b>
untried	1,234	70	1,304	1,212	59	1,271	-2	-16	-3
convicted unsentenced	711	44	756	746	35	781	5	*	3
<b>Under sentence</b>	<b>6,972</b>	<b>294</b>	<b>7,266</b>	<b>7,219</b>	<b>310</b>	<b>7,529</b>	<b>4</b>	<b>5</b>	<b>4</b>
Fine defaulter	2	0	2	3	0	3	*	*	*
Less than or equal to 6 months	786	62	848	835	58	893	6	-6	5
Greater than 6 months to less than 12 months	352	17	369	413	33	446	17	*	21
12 months to less than 4 years	3,642	136	3,777	3,736	135	3,871	3	-1	2
4 years or more (excluding Indeterminate sentences)	1,573	64	1,637	1,503	62	1,566	-4	-2	-4
Indeterminate sentences	617	15	631	728	21	749	18	*	19
<b>Non-criminal prisoners</b>	<b>90</b>	<b>3</b>	<b>93</b>	<b>110</b>	<b>9</b>	<b>119</b>	<b>22</b>	<b>*</b>	<b>28</b>

<sup>1</sup> Young adults are those aged 18 - 20 and those 21 year olds who were aged 20 or under at conviction who have not been reclassified as part of the adult population

\* indicates that one or both of the comparative numbers are less than 50 which could give rise to misleading percentage changes

**Data Sources and Quality**

These figures have been drawn from administrative IT systems, which, as with any large scale recording system, are subject to possible errors with data entry and processing. See Data Sources and Quality section of report for more information.

**Table 2: Population in prison by offence - remand and immediate custodial sentence**

	Jul-07		Jul-08		Percentage change 2007 to 2008	
	Remand	Immediate custodial sentence	Remand	Immediate custodial sentence	Remand	Immediate custodial sentence
<b>All prisoners</b>	<b>13,069</b>	<b>65,726</b>	<b>13,512</b>	<b>68,458</b>	<b>3</b>	<b>4</b>
Violence against the person	3,158	17,874	3,465	19,254	10	8
Sexual offences	831	7,362	934	7,632	12	4
Robbery	1,386	8,652	1,441	8,783	4	2
Burglary	1,449	7,921	1,540	7,882	6	0
Theft and Handling	1,040	3,656	1,001	3,871	-4	6
Fraud and Forgery	554	1,781	511	2,007	-8	13
Drug offences	1,874	10,654	1,829	10,985	-2	3
Motoring offences	167	1,419	132	1,347	-21	-5
Other offences	1,849	6,097	1,916	6,532	4	7
Offence not recorded	763	312	743	164	-3	-47
<b>All male prisoners</b>	<b>12,148</b>	<b>62,349</b>	<b>12,626</b>	<b>64,973</b>	<b>4</b>	<b>4</b>
Violence against the person	2,986	17,166	3,271	18,476	10	8
Sexual offences	818	7,318	925	7,588	13	4
Robbery	1,326	8,350	1,383	8,478	4	2
Burglary	1,398	7,715	1,473	7,687	5	0
Theft and Handling	924	3,275	893	3,404	-3	4
Fraud and Forgery	473	1,542	431	1,729	-9	12
Drug offences	1,689	9,610	1,690	10,036	0	4
Motoring offences	161	1,384	129	1,325	-20	-4
Other offences	1,699	5,700	1,765	6,104	4	7
Offence not recorded	674	289	667	147	-1	-49
<b>All female prisoners</b>	<b>921</b>	<b>3,377</b>	<b>886</b>	<b>3,485</b>	<b>-4</b>	<b>3</b>
Violence against the person	172	708	194	778	13	10
Sexual offences	13	44	9	45	*	*
Robbery	60	302	58	304	-4	1
Burglary	51	206	68	196	33	-5
Theft and Handling	116	381	108	467	-7	23
Fraud and Forgery	80	238	80	278	0	17
Drug offences	185	1,044	139	949	-25	-9
Motoring offences	6	35	3	23	*	*
Other offences	149	396	152	428	2	8
Offence not recorded	89	23	76	17	-14	*

**Table 2: Population in prison by offence - remand and immediate custodial sentence**

	Jul-07		Jul-08		Percentage change 2007 to 2008	
	Remand	Immediate custodial sentence	Remand	Immediate custodial sentence	Remand	Immediate custodial sentence
<b>All adult prisoners</b>	<b>10,465</b>	<b>56,537</b>	<b>10,911</b>	<b>59,050</b>	<b>4</b>	<b>4</b>
Violence against the person	2,483	15,293	2,740	16,514	10	8
Sexual offences	728	6,966	818	7,213	12	4
Robbery	822	6,402	840	6,584	2	3
Burglary	1,151	6,721	1,218	6,644	6	-1
Theft and Handling	848	3,061	841	3,323	-1	9
Fraud and Forgery	517	1,730	481	1,960	-7	13
Drug offences	1,628	9,891	1,604	10,055	-1	2
Motoring offences	140	1,238	111	1,187	-21	-4
Other offences	1,501	4,980	1,608	5,437	7	9
Offence not recorded	647	254	652	132	1	-48
<b>All adult male prisoners</b>	<b>9,677</b>	<b>53,514</b>	<b>10,135</b>	<b>55,928</b>	<b>5</b>	<b>5</b>
Violence against the person	2,345	14,719	2,570	15,861	10	8
Sexual offences	717	6,923	809	7,168	13	4
Robbery	774	6,161	797	6,338	3	3
Burglary	1,104	6,530	1,157	6,465	5	-1
Theft and Handling	748	2,704	746	2,890	0	7
Fraud and Forgery	437	1,500	402	1,687	-8	12
Drug offences	1,464	8,896	1,485	9,164	1	3
Motoring offences	135	1,206	109	1,166	-19	-3
Other offences	1,383	4,637	1,477	5,073	7	9
Offence not recorded	570	238	583	116	2	-51
<b>All adult female prisoners</b>	<b>788</b>	<b>3,023</b>	<b>776</b>	<b>3,122</b>	<b>-2</b>	<b>3</b>
Violence against the person	138	574	169	653	23	14
Sexual offences	10	43	9	45	*	*
Robbery	48	241	43	246	*	2
Burglary	48	191	60	179	*	-6
Theft and Handling	100	356	94	434	-6	22
Fraud and Forgery	80	230	79	273	-1	19
Drug offences	164	995	119	891	-27	-10
Motoring offences	6	33	2	21	*	*
Other offences	118	343	131	365	11	6
Offence not recorded	77	16	69	16	-11	*

**Table 2: Population in prison by offence - remand and immediate custodial sentence**

	Jul-07		Jul-08		Percentage change 2007 to 2008	
	Remand	Immediate custodial sentence	Remand	Immediate custodial sentence	Remand	Immediate custodial sentence
<b>All aged 15-17</b>	<b>545</b>	<b>1,925</b>	<b>549</b>	<b>1,882</b>	<b>1</b>	<b>-2</b>
Violence against the person	149	459	162	503	9	10
Sexual offences	24	67	38	75	*	13
Robbery	137	502	168	469	23	-7
Burglary	59	297	65	310	10	4
Theft and Handling	41	188	19	144	*	-23
Fraud and Forgery	2	9	2	4	*	*
Drug offences	42	85	38	107	*	25
Motoring offences	2	36	2	29	*	*
Other offences	68	269	48	235	*	-13
Offence not recorded	21	14	6	7	*	*
<b>All males aged 15-17</b>	<b>526</b>	<b>1,865</b>	<b>533</b>	<b>1,829</b>	<b>1</b>	<b>-2</b>
Violence against the person	144	436	159	479	10	10
Sexual offences	24	67	38	75	*	13
Robbery	135	493	163	457	21	-7
Burglary	58	294	65	308	12	5
Theft and Handling	37	184	18	142	*	-23
Fraud and Forgery	2	9	2	4	*	*
Drug offences	42	81	38	104	*	28
Motoring offences	2	36	2	29	*	*
Other offences	63	255	42	226	*	-11
Offence not recorded	19	11	5	6	*	*
<b>All females aged 15-17</b>	<b>18</b>	<b>60</b>	<b>17</b>	<b>53</b>	<b>*</b>	<b>-11</b>
Violence against the person	5	23	3	23	*	*
Sexual offences	0	0	0	0	*	*
Robbery	2	9	5	12	*	*
Burglary	1	3	0	3	*	*
Theft and Handling	4	4	1	3	*	*
Fraud and Forgery	0	1	0	0	*	*
Drug offences	0	4	0	3	*	*
Motoring offences	0	0	0	0	*	*
Other offences	4	14	6	8	*	*
Offence not recorded	2	3	1	1	*	*

**Table 2: Population in prison by offence - remand and immediate custodial sentence**

	Jul-07		Jul-08		Percentage change 2007 to 2008	
	Remand	Immediate custodial sentence	Remand	Immediate custodial sentence	Remand	Immediate custodial sentence
<b>All young adults<sup>1</sup></b>	<b>2,059</b>	<b>7,264</b>	<b>2,052</b>	<b>7,526</b>	<b>0</b>	<b>4</b>
Violence against the person	526	2,122	563	2,238	7	5
Sexual offences	79	329	79	344	-1	5
Robbery	427	1,748	433	1,730	1	-1
Burglary	239	903	258	928	8	3
Theft and Handling	151	408	141	403	-7	-1
Fraud and Forgery	35	41	28	44	*	*
Drug offences	203	678	186	823	-8	21
Motoring offences	24	144	19	131	*	-9
Other offences	280	847	261	860	-7	1
Offence not recorded	95	44	85	25	-11	*
<b>All male young adults<sup>1</sup></b>	<b>1,945</b>	<b>6,970</b>	<b>1,958</b>	<b>7,216</b>	<b>1</b>	<b>4</b>
Violence against the person	497	2,011	542	2,136	9	6
Sexual offences	77	328	79	344	2	5
Robbery	417	1,696	423	1,684	2	-1
Burglary	236	891	251	914	6	3
Theft and Handling	139	387	128	373	-8	-4
Fraud and Forgery	35	34	27	38	*	*
Drug offences	182	633	167	768	-8	21
Motoring offences	24	142	17	130	*	-9
Other offences	253	808	246	805	-3	0
Offence not recorded	85	40	78	25	-8	*
<b>All female young adults<sup>1</sup></b>	<b>115</b>	<b>294</b>	<b>93</b>	<b>310</b>	<b>-19</b>	<b>5</b>
Violence against the person	29	111	22	102	*	-8
Sexual offences	2	1	0	0	*	*
Robbery	10	52	9	46	*	*
Burglary	2	12	7	14	*	*
Theft and Handling	12	21	13	30	*	*
Fraud and Forgery	0	7	1	6	*	*
Drug offences	21	45	20	55	*	*
Motoring offences	0	2	1	2	*	*
Other offences	27	39	15	55	*	*
Offence not recorded	10	4	6	0	*	*

<sup>1</sup> Young adults are those aged 18 - 20 and those 21 year olds who were aged 20 or under at conviction who have not been reclassified as part of the adult population

\* indicates that one or both of the comparative numbers are less than 50 which could give rise to misleading percentage changes

#### Data Sources and Quality

These figures have been drawn from administrative IT systems, which, as with any large scale recording system, are subject to possible errors with data entry and processing. See Data Sources and Quality section of report for more information.

**Table 3: Young population in prison: by type of custody and sex**

31 July 2008

	15	16	17	Total Under 18	18	19	20	21	Total Young Adults <sup>1</sup>
<b>All young population in prisons, of which</b>									
<b><i>Prisoners on remand</i></b>	<b>62</b>	<b>157</b>	<b>331</b>	<b>549</b>	<b>680</b>	<b>676</b>	<b>627</b>	<b>69</b>	<b>2,052</b>
untried	41	97	221	<b>359</b>	422	411	388	50	<b>1,271</b>
convicted unsentenced	21	60	110	<b>190</b>	258	265	239	19	<b>781</b>
<b><i>Prisoners under sentence</i></b>	<b>208</b>	<b>575</b>	<b>1,099</b>	<b>1,882</b>	<b>1,561</b>	<b>2,548</b>	<b>2,766</b>	<b>654</b>	<b>7,529</b>
Fine defaulter	0	0	0	<b>0</b>	0	0	3	0	<b>3</b>
Immediate custodial sentence	208	575	1,099	<b>1,882</b>	1,561	2,548	2,763	654	<b>7,526</b>
<b><i>Non-criminal prisoners</i></b>	<b>0</b>	<b>0</b>	<b>1</b>	<b>1</b>	<b>22</b>	<b>33</b>	<b>40</b>	<b>25</b>	<b>119</b>
<b>All young male population in prisons, of which</b>									
<b><i>Prisoners on remand</i></b>	<b>62</b>	<b>157</b>	<b>314</b>	<b>533</b>	<b>647</b>	<b>645</b>	<b>599</b>	<b>68</b>	<b>1,958</b>
untried	41	97	213	<b>351</b>	402	391	369	50	<b>1,212</b>
convicted unsentenced	21	60	102	<b>182</b>	245	254	230	18	<b>746</b>
<b><i>Prisoners under sentence</i></b>	<b>208</b>	<b>574</b>	<b>1,047</b>	<b>1,829</b>	<b>1,488</b>	<b>2,444</b>	<b>2,651</b>	<b>635</b>	<b>7,219</b>
Fine defaulter	0	0	0	<b>0</b>	0	0	3	0	<b>3</b>
Immediate custodial sentence	208	574	1,047	<b>1,829</b>	1,488	2,444	2,648	635	<b>7,216</b>
<b><i>Non-criminal prisoners</i></b>	<b>0</b>	<b>0</b>	<b>1</b>	<b>1</b>	<b>20</b>	<b>29</b>	<b>35</b>	<b>25</b>	<b>110</b>
<b>All young female population in prisons, of which</b>									
<b><i>Prisoners on remand</i></b>	<b>0</b>	<b>0</b>	<b>17</b>	<b>17</b>	<b>33</b>	<b>31</b>	<b>28</b>	<b>1</b>	<b>93</b>
untried	0	0	8	<b>8</b>	21	20	19	0	<b>59</b>
convicted unsentenced	0	0	8	<b>8</b>	13	12	9	1	<b>35</b>
<b><i>Prisoners under sentence</i></b>	<b>0</b>	<b>1</b>	<b>53</b>	<b>53</b>	<b>73</b>	<b>103</b>	<b>115</b>	<b>19</b>	<b>310</b>
Fine defaulter	0	0	0	<b>0</b>	0	0	0	0	<b>0</b>
Immediate custodial sentence	0	1	53	<b>53</b>	73	103	115	19	<b>310</b>
<b><i>Non-criminal prisoners</i></b>	<b>0</b>	<b>0</b>	<b>0</b>	<b>0</b>	<b>1</b>	<b>3</b>	<b>5</b>	<b>0</b>	<b>9</b>

<sup>1</sup> Young adults are those aged 18 - 20 and those 21 year olds who were aged 20 or under at conviction who have not been reclassified as part of the adult population

**Data Sources and Quality**

These figures have been drawn from administrative IT systems, which, as with any large scale recording system, are subject to possible errors with data entry and processing. See Data Sources and Quality section of report for more information.

**Table 4: CNA and population by sex and establishment**

31 July 2008

<b>Establishment</b>	<b>In use CNA<sup>1</sup></b>	<b>Total Population</b>
<b>Males</b>		
Acklington	946	932
Albany	566	559
Altcourse	794	1,288
Ashfield	400	355
Ashwell	535	545
Aylesbury	437	438
Bedford	322	506
Belmarsh	800	914
Birmingham	1,109	1,450
Blantyre House	122	116
Blundestone	481	517
Brinsford	545	559
Bristol	424	612
Brixton	606	801
Buckley Hall	350	378
Bullingdon	819	1,053
Bullwood Hall	180	226
Camp Hill	520	584
Canterbury	195	310
Cardiff	532	778
Castington	400	394
Channings Wood	696	722
Chelmsford	541	698
Coldingley	370	384
Cookham Wood	66	40
Dartmoor	624	642
Deerbolt	453	455
Doncaster	771	1,133
Dorchester	145	243
Dovegate	800	838
Dover	316	298
Durham	580	934
Edmunds Hill	371	366
Elmley	753	995
Erlestoke	470	467
Everthorpe	603	679
Exeter	316	496
Featherstone	663	678
Feltham	762	616
Ford	557	549
Forest Bank	800	1,156
Frankland	733	724
Full Sutton	592	582
Garth	812	823
Gartree	570	577
Glen Parva	668	808
Gloucester	225	308
Grendon/Spring Hill	527	506
Guys Marsh	520	565
Haslar	160	156
Haverigg	622	634
Hewell <sup>2</sup>	1,175	1,428
Highdown	999	1,112
Highpoint	792	810
Hindley	523	481

**Table 4: CNA and population by sex and establishment**

31 July 2008

<b>Establishment</b>	<b>In use CNA<sup>1</sup></b>	<b>Total Population</b>
Hollesley Bay	345	340
Holme House	857	985
Hull	723	1,033
Huntercombe	360	348
Kennet	175	342
Kingston(Portsmouth)	199	199
Kirkham	590	567
Kirklevington	283	281
Lancaster	157	232
Lancaster Farms	480	502
Latchmere House	207	202
Leeds	689	978
Leicester	210	367
Lewes	623	682
Leyhill	510	500
Lincoln	436	715
Lindholme	1,036	1,100
Littlehey	663	725
Liverpool	1,166	1,385
Long Lartin	426	438
Lowdham Grange	640	680
Maidstone	451	477
Manchester	948	1,218
Moorland Open	260	235
Moorland	740	775
North Sea Camp	318	296
Northallerton	153	244
Norwich	447	552
Nottingham	379	547
Onley	640	636
Parc	838	1,193
Parkhurst	449	486
Pentonville	813	1,134
Peterborough	480	626
Portland	579	592
Preston	429	736
Ranby	972	1,081
Reading	190	258
Risley	1,050	1,076
Rochester	392	387
Rye Hill	600	652
Shepton Mallet	162	184
Shrewsbury	178	323
Stafford	681	675
Standford Hill	462	439
Stocken	779	798
Stoke Heath	574	620
Sudbury	581	574
Swaleside	751	771
Swansea	240	426
Swinfen Hall	604	618
The Mount	747	764
The Verne	560	586
The Wolds	320	377
Thorn Cross	322	214
Usk/Prescoed	317	406
Wakefield	748	739
Wandsworth	1,086	1,648

**Table 4: CNA and population by sex and establishment**

31 July 2008

---

<b>Establishment</b>	<b>In use CNA<sup>1</sup></b>	<b>Total Population</b>
Warren Hill	222	206

---

## Table 4: CNA and population by sex and establishment

31 July 2008

Establishment	In use CNA <sup>1</sup>	Total Population
Wayland	955	1,008
Wealstun	605	571
Wellingborough	638	642
Werrington	160	137
Wetherby	300	316
Whatton	779	840
Whitemoor	464	430
Winchester	380	550
Woodhill	641	821
Wormwood Scrubs	1,176	1,279
Wymott	1,017	1,064
<b>TOTAL</b>	<b>69,010</b>	<b>79,046</b>
<b>Females</b>		
Askham Grange	126	109
Bronzefield	450	441
Downview	358	348
Drake Hall	275	249
East Sutton Park	98	93
Eastwood Park	326	324
Foston Hall	283	262
Holloway	500	460
Low Newton	298	288
Morton Hall	392	359
New Hall	393	433
Peterborough	360	361
Send	282	276
Styal	450	446
<b>TOTAL</b>	<b>4,591</b>	<b>4,449</b>
<b>Male and female establishment total</b>	<b>73,601</b>	<b>83,495</b>
<b>Police cells total</b>	*	<b>184</b>
<b>Establishment and police cell total</b>	<b>73,601</b>	<b>83,679</b>

<sup>1</sup> In Use CNA - Certified Normal Accommodation that is available for immediate use, excludes damaged cells, cells affected by building works and cells taken out of use due to staff shortages

<sup>2</sup> HMP Hewell was created by an amalgamation of the three former prisons, Blakenhurst, Brockhill and Hewell Grange on 25 June 2008

\* On 31 July 2008 up to 400 police available under operation safeguard which are not included in the CNA figure.

### Data Sources and Quality

These figures have been drawn from administrative IT systems, which, as with any large scale recording system, are subject to possible errors with data entry and processing. See Data Sources and Quality section of report for more information.