



Ministry of
JUSTICE

NOMS National Offender
Management Service
Working together to reduce re-offending

Population in Custody MONTHLY TABLES

December 2007
England and Wales

Population in custody December 2007 - Key points

RDS NOMS

Population in custody

- The population in custody on 31 December 2007 was 80,067, 1 per cent more than a year earlier. The population in prisons was 79,605, in Secure Training Centres (STCs) it was 248, and in Secure Children's Homes (SCHs) it was 214.

Population in prison

- The male prison population increased by 1 per cent to 75,275 and the female prison population increased 1 per cent to 4,330.
- The remand population in prison decreased by 6 per cent to 12,236 in December 2007 compared to December 2006. Within this total, the untried population decreased 6 per cent to 7,980 and the convicted unsentenced population decreased 5 per cent to 4,256.
- Amongst the remand population the largest percentage decreases since December 2006 were seen in theft and handling, motoring offences and other offences down by 22, 19 and 10 per cent respectively. Increases were seen in fraud and forgery and drug offences, up 7 and 3 per cent respectively.
- There were 65,737 sentenced⁽¹⁾ prisoners at 31 December 2007, an increase of 3 per cent from a year earlier. The largest proportionate increase since December 2006 was for those serving indeterminate sentences (Life sentences and Indeterminate sentences for Public Protection) which increased by 24 per cent.
- Amongst the sentenced⁽¹⁾ prison population violence against the person, other offences and sexual offences saw the largest percentage increases, up by 9, 7 and 6 per cent respectively from December 2006. The number of people serving sentences for motoring offences saw the largest percentage decrease since December 2006, down by 15 per cent.
- The adult population in prison was 68,081 at 31 December 2007, an increase of 1 per cent from a year earlier. Over the same time period the young adults saw an increase of 4 per cent to 9,333 and the 15 to 17 year olds saw a decrease of 6 per cent to 2,191.
- The prison population was 110 per cent of the 'In Use CNA' (72,251) at 31 December 2007.
- At 31 December 2007 there were 11,310 foreign nationals in prison establishments in England and Wales. This includes those held under the Immigration Act 1971 (including those in the immigration removal centres of Dover, Haslar and Lindholme) as well as those held on remand or serving custodial sentences.
- The largest foreign national population at 31 December 2007 were Jamaican nationals, with a population of 1,278, followed by Nigeria (1,146), Republic of Ireland (639), Vietnam (460) and Pakistan (406).

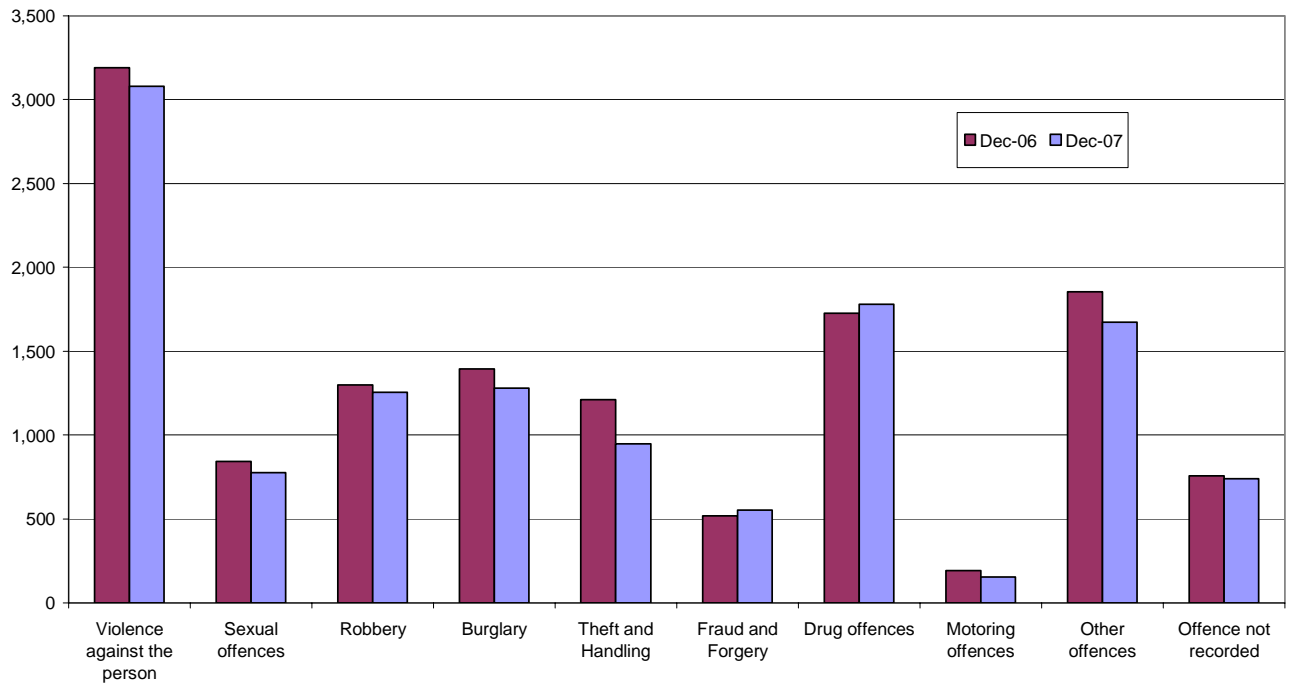
(1) Includes recalls and excludes fine defaulters

For further queries:

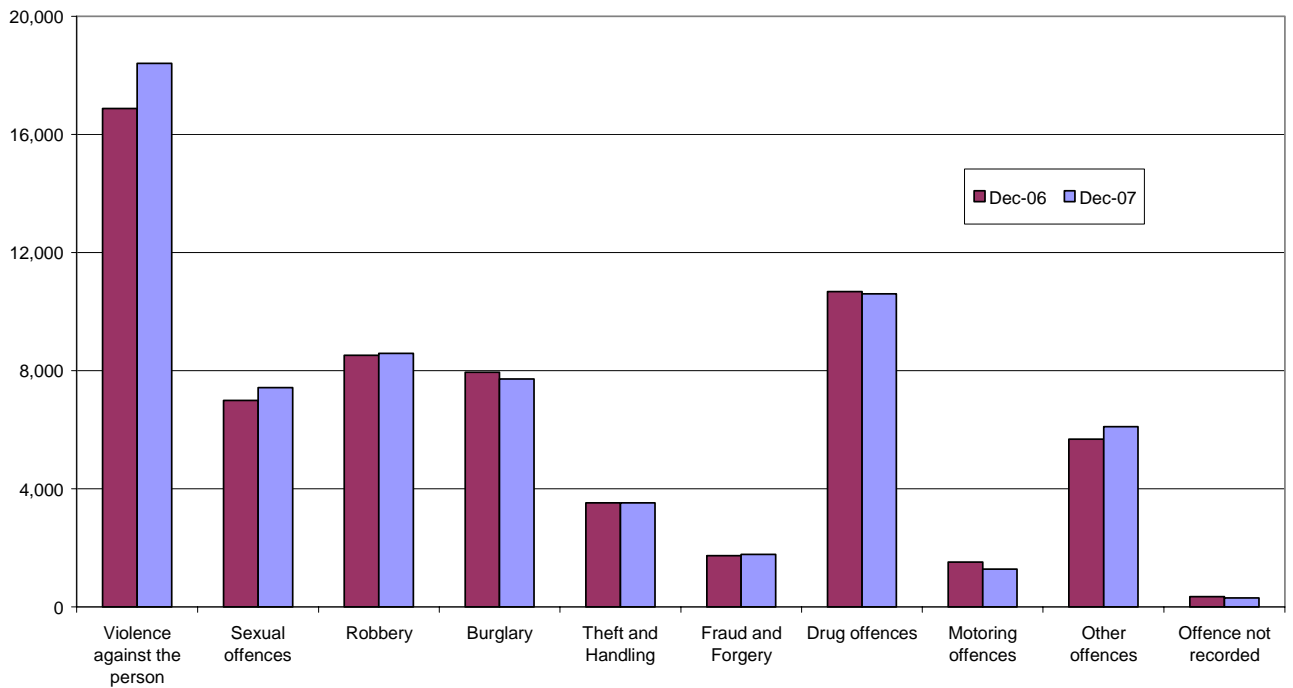
E-mail: esd@justice.gsi.gov.uk

Press enquiries - Press Office 020 7210 0638

Remand population by offence group



Immediate custodial sentenced population by offence group



NOTES

Data sources and quality

The data presented in this brief are drawn from the prison administrative IT systems. Although care is taken when processing and analysing the returns, the detail collected is subject to the inaccuracies inherent in any large-scale recording system. While the figures shown have been checked as far as practicable, they should be regarded as approximate and not necessarily accurate to the last whole number shown in the tables. They are fit to be used for purposes of looking at trends and for comparing the relative magnitude of components.

We are currently undertaking a programme of work to audit the quality of our data, and to identify priorities for improvements. This may lead to changes in future tables.

The prison population information has been drawn from two prison sources. The first source is the routine provision by prison establishments of records of the numbers of persons held in custody at the end of each month, broadly subdivided according to age, sex, custody type and sentence length. The records are collated and processed centrally, to produce the main estimates of the end of month population presented. The second source is the electronically held details for individual inmates such as date of birth, sex, religion, ethnic origin, custody type, offence, and reception and discharge dates and, for sentenced prisoners, sentence length. These data are collected on a central computer database and are used to produce the analyses by offence group and individual year of age. They form the basis of detailed population breakdowns, supplementing the aggregates derived from the first source, to which they are scaled for consistency. A new more detailed method of scaling this information was developed in 2004.

Because the detailed population breakdowns have been scaled and also rounded to the nearest whole number, individual components may not sum to the totals.

Information on the population in STCs and SCHs has been supplied by the Youth Justice Board.

All figures are provisional pending publication of the annual Offender Management Caseload Statistics.

Definitions

Population in custody - this includes those held in prison establishments, police cells under Operation Safeguard, secure training centres (STCs) and secure children's homes (SCHs). This is a change to previous outputs (notably Prison Population Monthly Brief and Prison Statistics England and Wales) where the reference to 'population in custody' just covered those held in prison establishments and police cells. All coverage is for England and Wales.

Population in prison – this includes those held in prisons in England and Wales, including the three removal centres of Dover, Haslar and Lindholme.

Sentenced population – this includes those sentenced to an immediate custodial sentence and fine defaulters.

Immediate custodial sentence – this does not include fine defaulters.

Adult prisoners – these are prisoners aged 21 years and over.

Young adults – these are prisoners aged 18 to 20, but including 21 year old prisoners who were aged 20 or under at conviction who have not been reclassified as part of the adult population

Indeterminate sentences – these cover life sentences and indeterminate sentences for public protection (IPP).

Table 1: Population in custody: by type of custody and sex

	Dec-06			Dec-07			Percentage change 2006 to 2007		
	Males	Females	Total	Males	Females	Total	Males	Females	Total
All population in custody, of which	74,569	4,439	79,008	75,586	4,481	80,067	1	1	1
Prisons	74,236	4,293	78,529	75,275	4,330	79,605	1	1	1
Police cells	0	0	0	0	0	0	*	*	*
SCHs	185	37	222	165	49	214	-11	*	-4
STCs	148	109	257	146	102	248	-1	-6	-4
							0	0	0
All population in prison, of which	74,236	4,293	78,529	75,275	4,330	79,605	1	1	1
Remand	12,120	865	12,985	11,404	832	12,236	-6	-4	-6
untried	7,924	558	8,482	7,436	544	7,980	-6	-3	-6
convicted unsentenced	4,196	307	4,503	3,968	288	4,256	-5	-6	-5
Under sentence	60,501	3,386	63,887	62,399	3,421	65,820	3	1	3
Fine defaulter	54	5	59	76	7	83	41	*	41
Less than or equal to 6 months	4,267	409	4,675	4,411	471	4,882	3	15	4
Greater than 6 months to less than 12 months	2,190	261	2,452	2,325	241	2,566	6	-8	5
12 months to less than 4 years	20,879	1,250	22,129	21,772	1,261	23,033	4	1	4
4 years or more (excluding Indeterminate sentences)	24,975	1,201	26,176	23,724	1,113	24,837	-5	-7	-5
Indeterminate sentences	8,136	260	8,396	10,091	328	10,419	24	26	24
Non-criminal prisoners	1,615	42	1,657	1,472	77	1,549	-9	*	-7
All adult population in prison, of which	63,366	3,842	67,208	64,242	3,839	68,081	1	0	1
Remand	9,638	751	10,389	9,188	728	9,916	-5	-3	-5
untried	6,339	482	6,821	6,067	475	6,542	-4	-1	-4
convicted unsentenced	3,299	269	3,568	3,121	253	3,374	-5	-6	-5
Under sentence	52,234	3,051	55,285	53,697	3,035	56,732	3	-1	3
Fine defaulter	54	5	59	73	7	80	35	*	36
Less than or equal to 6 months	3,240	351	3,591	3,277	392	3,669	1	12	2
Greater than 6 months to less than 12 months	1,607	226	1,833	1,721	208	1,929	7	-8	5
12 months to less than 4 years	16,448	1,092	17,540	17,234	1,081	18,315	5	-1	4
4 years or more (excluding Indeterminate sentences)	23,265	1,134	24,399	22,082	1,037	23,119	-5	-9	-5
Indeterminate sentences	7,620	243	7,863	9,310	310	9,620	22	28	22
Non-criminal prisoners	1,494	40	1,534	1,357	76	1,433	-9	*	-7
All 15 -17 year olds in prison, of which	2,271	58	2,329	2,130	61	2,191	-6	5	-6
Remand	529	16	545	481	15	496	-9	*	-9
untried	360	13	372	315	12	327	-12	*	-12
convicted unsentenced	169	3	172	165	3	169	-2	*	-2
Under sentence	1,739	42	1,781	1,647	45	1,692	-5	*	-5
Fine defaulter	0	0	0	0	0	0	*	*	*
Less than or equal to 6 months	372	16	387	378	11	389	2	*	0
Greater than 6 months to less than 12 months	227	7	234	234	9	243	3	*	4
12 months to less than 4 years	942	15	957	850	19	869	-10	*	-9
4 years or more (excluding Indeterminate sentences)	143	4	147	114	7	121	-21	*	-18
Indeterminate sentences	55	0	55	71	0	71	29	*	29
Non-criminal prisoners	3	0	3	3	0	3	*	*	*
All young adults in prison, of which	8,599	393	8,992	8,903	430	9,333	4	9	4
Remand	1,953	98	2,051	1,735	89	1,824	-11	-10	-11
untried	1,225	63	1,289	1,054	57	1,111	-14	-10	-14
convicted unsentenced	728	35	763	682	32	713	-6	*	-7
Under sentence	6,528	293	6,821	7,055	341	7,396	8	16	8
Fine defaulter	0	0	0	3	0	3	*	*	*
Less than or equal to 6 months	655	42	697	756	68	824	15	*	18
Greater than 6 months to less than 12 months	357	28	385	370	25	395	4	*	3
12 months to less than 4 years	3,489	143	3,632	3,688	161	3,849	6	13	6
4 years or more (excluding Indeterminate sentences)	1,567	63	1,630	1,528	69	1,597	-2	9	-2
Indeterminate sentences	461	17	478	710	18	728	54	*	52
Non-criminal prisoners	118	2	120	112	1	113	-5	*	-6

Young adults are those aged 18 - 20 and those 21 year olds who were aged 20 or under at conviction who have not been reclassified as part of the adult population
 * indicates that one or both of the comparative numbers are less than 50 which could give rise to misleading percentage changes

Data Sources and Quality
 These figures have been drawn from administrative IT systems, which, as with any large scale recording system, are subject to possible errors with data entry and processing. See Data Sources and Quality section of report for more information.

Table 2: Population in prison by offence - remand and immediate custodial sentence

	Dec-06		Dec-07		Percentage change 2006 to 2007	
	Remand	Immediate custodial sentence	Remand	Immediate custodial sentence	Remand	Immediate custodial sentence
All prisoners	12,985	63,828	12,236	65,737	-6	3
Violence against the person	3,191	16,872	3,080	18,407	-3	9
Sexual offences	843	6,994	776	7,425	-8	6
Robbery	1,299	8,522	1,255	8,592	-3	1
Burglary	1,395	7,940	1,280	7,718	-8	-3
Theft and Handling	1,211	3,529	948	3,527	-22	0
Fraud and Forgery	518	1,739	552	1,778	7	2
Drug offences	1,727	10,680	1,780	10,595	3	-1
Motoring offences	191	1,518	155	1,284	-19	-15
Other offences	1,855	5,690	1,672	6,105	-10	7
Offence not recorded	756	345	739	307	-2	-11
All male prisoners	12,120	60,447	11,404	62,323	-6	3
Violence against the person	3,040	16,223	2,918	17,646	-4	9
Sexual offences	834	6,950	763	7,380	-8	6
Robbery	1,245	8,202	1,197	8,284	-4	1
Burglary	1,347	7,714	1,236	7,513	-8	-3
Theft and Handling	1,067	3,137	849	3,142	-20	0
Fraud and Forgery	433	1,515	469	1,509	8	0
Drug offences	1,567	9,590	1,622	9,592	4	0
Motoring offences	190	1,493	153	1,256	-19	-16
Other offences	1,725	5,308	1,538	5,709	-11	8
Offence not recorded	673	316	658	292	-2	-8
All female prisoners	865	3,381	832	3,414	-4	1
Violence against the person	151	649	162	761	7	17
Sexual offences	9	44	13	45	*	*
Robbery	54	320	58	308	7	-4
Burglary	48	226	44	205	*	-9
Theft and Handling	144	392	99	385	-32	-2
Fraud and Forgery	85	224	83	269	-3	20
Drug offences	160	1,089	158	1,002	-2	-8
Motoring offences	1	25	2	28	*	*
Other offences	130	381	134	396	3	4
Offence not recorded	84	29	81	15	-4	*

Table 2: Population in prison by offence - remand and immediate custodial sentence

	Dec-06		Dec-07		Percentage change 2006 to 2007	
	Remand	Immediate custodial sentence	Remand	Immediate custodial sentence	Remand	Immediate custodial sentence
All adult prisoners	10,389	55,226	9,916	56,652	-5	3
Violence against the person	2,467	14,520	2,439	15,768	-1	9
Sexual offences	727	6,634	661	7,018	-9	6
Robbery	766	6,350	780	6,389	2	1
Burglary	1,087	6,796	1,001	6,546	-8	-4
Theft and Handling	1,019	2,995	779	2,993	-24	0
Fraud and Forgery	484	1,688	530	1,726	9	2
Drug offences	1,520	9,960	1,553	9,818	2	-1
Motoring offences	153	1,277	134	1,106	-12	-13
Other offences	1,542	4,724	1,402	5,044	-9	7
Offence not recorded	623	280	638	245	2	-12
All adult male prisoners	9,638	52,180	9,188	53,624	-5	3
Violence against the person	2,343	13,972	2,303	15,148	-2	8
Sexual offences	719	6,592	652	6,972	-9	6
Robbery	725	6,092	732	6,150	1	1
Burglary	1,046	6,593	962	6,360	-8	-4
Theft and Handling	884	2,637	686	2,636	-22	0
Fraud and Forgery	407	1,471	450	1,469	11	0
Drug offences	1,376	8,921	1,415	8,875	3	-1
Motoring offences	152	1,253	132	1,080	-13	-14
Other offences	1,435	4,396	1,294	4,703	-10	7
Offence not recorded	550	252	562	230	2	-9
All adult female prisoners	751	3,046	728	3,028	-3	-1
Violence against the person	124	548	136	620	10	13
Sexual offences	9	42	9	45	*	*
Robbery	41	258	48	239	*	-7
Burglary	41	204	39	185	*	-9
Theft and Handling	134	359	93	358	-31	0
Fraud and Forgery	77	217	79	257	3	19
Drug offences	144	1,039	138	943	-4	-9
Motoring offences	1	24	2	25	*	*
Other offences	107	328	108	340	1	4
Offence not recorded	72	27	75	15	4	*

Table 2: Population in prison by offence - remand and immediate custodial sentence

	Dec-06		Dec-07		Percentage change 2006 to 2007	
	Remand	Immediate custodial sentence	Remand	Immediate custodial sentence	Remand	Immediate custodial sentence
All aged 15-17	545	1,781	496	1,692	-9	-5
Violence against the person	164	409	154	416	-6	2
Sexual offences	18	62	27	71	*	15
Robbery	152	535	116	431	-24	-19
Burglary	60	287	54	265	-11	-8
Theft and Handling	44	143	33	151	*	6
Fraud and Forgery	3	8	2	4	*	*
Drug offences	31	79	42	75	*	-5
Motoring offences	4	35	2	31	*	*
Other offences	45	216	55	242	*	12
Offence not recorded	23	8	11	5	*	*
All males aged 15-17	529	1,739	481	1,647	-9	-5
Violence against the person	158	394	151	402	-4	2
Sexual offences	18	61	27	71	*	17
Robbery	152	525	111	418	-27	-20
Burglary	58	286	52	262	-10	-8
Theft and Handling	43	137	33	146	*	7
Fraud and Forgery	3	7	2	4	*	*
Drug offences	27	78	40	74	*	-6
Motoring offences	4	35	2	31	*	*
Other offences	45	208	52	233	*	12
Offence not recorded	20	8	10	5	*	*
All females aged 15-17	16	42	15	45	*	*
Violence against the person	6	15	3	15	*	*
Sexual offences	0	1	0	0	*	*
Robbery	0	10	4	13	*	*
Burglary	2	1	1	3	*	*
Theft and Handling	1	6	0	5	*	*
Fraud and Forgery	0	1	0	0	*	*
Drug offences	4	1	2	1	*	*
Motoring offences	0	0	0	0	*	*
Other offences	0	8	3	9	*	*
Offence not recorded	3	0	1	0	*	*

Table 2: Population in prison by offence - remand and immediate custodial sentence

	Dec-06		Dec-07		Percentage change 2006 to 2007	
	Remand	Immediate custodial sentence	Remand	Immediate custodial sentence	Remand	Immediate custodial sentence
All young adults	2,051	6,821	1,824	7,393	-11	8
Violence against the person	559	1,943	486	2,223	-13	14
Sexual offences	98	298	88	337	-10	13
Robbery	381	1,637	359	1,772	-6	8
Burglary	248	857	226	907	-9	6
Theft and Handling	148	390	136	382	-8	-2
Fraud and Forgery	30	44	20	48	*	*
Drug offences	176	640	185	702	5	10
Motoring offences	34	206	19	147	*	-29
Other offences	267	750	215	819	-19	9
Offence not recorded	111	57	90	57	-19	-1
All male young adults	1,953	6,528	1,735	7,052	-11	8
Violence against the person	539	1,857	464	2,096	-14	13
Sexual offences	98	297	85	337	-14	13
Robbery	368	1,584	354	1,716	-4	8
Burglary	243	836	221	891	-9	7
Theft and Handling	139	363	131	360	-6	-1
Fraud and Forgery	22	37	16	37	*	*
Drug offences	164	591	167	643	2	9
Motoring offences	34	205	19	144	*	-30
Other offences	244	704	193	772	-21	10
Offence not recorded	103	55	86	57	-17	3
All female young adults	98	293	89	341	-10	16
Violence against the person	21	86	22	127	*	47
Sexual offences	0	1	3	0	*	*
Robbery	13	53	6	56	*	6
Burglary	5	21	4	16	*	*
Theft and Handling	9	27	6	22	*	*
Fraud and Forgery	8	6	3	12	*	*
Drug offences	12	50	18	59	*	17
Motoring offences	0	1	0	3	*	*
Other offences	23	45	22	46	*	*
Offence not recorded	9	2	4	0	*	*

* indicates that one or both of the comparative numbers are less than 50 which could give rise to misleading percentage changes

Data Sources and Quality

These figures have been drawn from administrative IT systems, which, as with any large scale recording system, are subject to possible errors with data entry and processing. See Data Sources and Quality section of report for more information.

Table 3: Young population in prison: by type of custody and sex

31 December 2007

	15	16	17	Total - under 18	18	19	20	21	Total Young Adults
All young population in prisons, of which									
<i>Prisoners on remand</i>	44	116	335	496	595	608	540	81	1,824
untried	28	74	225	327	381	358	314	58	1,111
convicted unsentenced	16	42	110	169	213	250	226	24	713
<i>Prisoners under sentence</i>	170	543	979	1,692	1,557	2,409	2,755	675	7,396
Fine defaulter	0	0	0	0	0	0	3	0	3
Immediate custodial sentence	170	543	979	1,692	1,557	2,409	2,752	675	7,393
<i>Non-criminal prisoners</i>	0	0	3	3	24	21	48	19	113
All young male population in prisons, of which									
<i>Prisoners on remand</i>	44	116	320	481	566	580	513	76	1,735
untried	28	74	213	315	361	343	297	53	1,054
convicted unsentenced	16	42	107	165	205	238	216	23	682
<i>Prisoners under sentence</i>	170	542	934	1,647	1,477	2,292	2,635	651	7,055
Fine defaulter	0	0	0	0	0	0	3	0	3
Immediate custodial sentence	170	542	934	1,647	1,477	2,292	2,632	651	7,052
<i>Non-criminal prisoners</i>	0	0	3	3	23	21	48	19	112
All young female population in prisons, of which									
<i>Prisoners on remand</i>	0	0	15	15	29	28	27	6	89
untried	0	0	12	12	21	15	16	4	57
convicted unsentenced	0	0	3	3	8	12	10	1	32
<i>Prisoners under sentence</i>	0	1	44	45	80	117	121	23	341
Fine defaulter	0	0	0	0	0	0	0	0	0
Immediate custodial sentence	0	1	44	45	80	117	121	23	341
<i>Non-criminal prisoners</i>	0	0	0	0	1	0	0	0	1

Young adults are those aged 18 - 20 and those 21 year olds who were aged 20 or under at conviction who have not been reclassified as part of the adult population

Data Sources and Quality

These figures have been drawn from administrative IT systems, which, as with any large scale recording system, are subject to possible errors with data entry and processing. See Data Sources and Quality section of report for more information.

Table 4: CNA and population by sex and establishment

31 December 2007

Establishment	In use CNA	Population Total	Of which:			
			Foreign nationals	UK nationals	Nationality not recorded	
Males						
Acklington	882	871	34	837	0	
Albany	526	510	48	456	6	
Altcourse	794	1,202	100	1,087	15	
Ashfield	400	352	31	316	5	
Ashwell	534	521	66	455	0	
Aylesbury	437	442	67	375	0	
Bedford	322	462	103	352	7	
Belmarsh	799	906	232	657	17	
Birmingham	1,121	1,442	208	1,206	28	
Blakenhurst	821	1,016	167	833	16	
Blantyre House	122	120	1	118	1	
Blundestone	421	466	94	369	3	
Brinsford	473	442	27	412	3	
Bristol	420	600	57	535	8	
Brixton	606	775	283	467	25	
Brockhill	170	168	23	145	0	
Buckley Hall	350	375	36	337	2	
Bullingdon	759	942	146	791	5	
Bullwood Hall	170	175	170	5	0	
Camp Hill	523	577	81	494	2	
Canterbury	196	288	269	17	2	
Cardiff	524	735	72	654	9	
Castington	400	349	15	332	2	
Channings Wood	698	713	45	668	0	
Chelmsford	541	681	123	538	20	
Coldingley	370	387	70	317	0	
Cookham Wood	17	0	0	0	0	
Dartmoor	619	630	33	597	0	
Deerbolt	447	439	16	422	1	
Doncaster	771	1,075	125	897	53	
Dorchester	143	219	26	188	5	
Dovegate	800	847	124	722	1	
Dover	316	308	299	0	9	
Durham	591	893	56	831	6	
Edmunds Hill	366	364	73	291	0	
Elmley	753	986	162	808	16	
Erlestoke	410	404	53	351	0	
Everthorpe	603	673	23	649	1	
Exeter	316	447	22	420	6	
Featherstone	663	674	70	602	2	
Feltham	762	583	173	377	33	
Ford	541	494	36	458	0	
Forest Bank	800	1,028	103	901	24	
Frankland	732	718	40	677	1	
Full Sutton	600	598	54	542	2	
Garth	812	728	48	678	2	
Gartree	570	574	41	533	0	
Glen Parva	668	769	48	719	2	
Gloucester	225	285	21	252	12	
Grendon/Spring Hill	548	531	17	514	0	
Guys Marsh	520	557	66	491	0	
Haslar	141	118	117	0	1	
Haverigg	622	579	13	566	0	
Hewell Grange	187	177	4	172	1	
Highdown	821	912	198	681	33	
Highpoint	792	798	193	603	2	
Hindley	523	484	18	461	5	
Hollesley Bay	330	314	11	303	0	
Holme House	857	895	63	830	2	
Hull	723	1,017	55	955	7	
Huntercombe	360	348	50	293	5	
Kennet	175	321	17	304	0	
Kingston(Portsmouth)	199	198	20	178	0	
Kirkham	590	485	4	481	0	
Kirklevington	223	222	0	222	0	

Table 4: CNA and population by sex and establishment

31 December 2007

Establishment	In use CNA	Population Total	Of which:			
			Foreign nationals	UK nationals	Nationality not recorded	
Lancaster	96	172	1	171	0	
Lancaster Farms	480	476	16	450	10	
Latchmere House	207	189	5	184	0	
Leeds	678	1,018	83	923	12	
Leicester	210	323	77	237	9	
Lewes	458	514	73	432	9	
Leyhill	512	348	26	322	0	
Lincoln	436	667	62	595	10	
Lindholme	1,042	1,045	127	865	53	
Littlehey	663	693	103	590	0	
Liverpool	1,160	1,345	95	1,248	2	
Long Lartin	426	415	70	345	0	
Lowdham Grange	640	673	97	576	0	
Maidstone	451	479	107	369	3	
Manchester	954	1,202	194	955	53	
Moorland Open	260	224	2	222	0	
Moorland	740	762	34	728	0	
North Sea Camp	306	295	12	283	0	
Northallerton	153	232	2	230	0	
Norwich	447	519	59	449	11	
Nottingham	379	518	38	470	10	
Onley	640	637	69	564	4	
Parc	838	1,102	42	1,053	7	
Parkhurst	453	495	70	418	7	
Pentonville	799	1,118	365	738	15	
Peterborough	480	589	101	465	23	
Portland	519	542	78	462	2	
Preston	429	732	40	688	4	
Ranby	912	1,035	90	922	23	
Reading	182	233	38	191	4	
Risley	1,050	1,070	69	1,001	0	
Rochester	392	391	71	319	1	
Rye Hill	600	589	119	469	1	
Shepton Mallet	165	186	5	181	0	
Shrewsbury	175	295	36	256	3	
Stafford	680	675	47	628	0	
Standford Hill	464	422	35	387	0	
Stocken	715	737	82	649	6	
Stoke Heath	516	601	20	576	5	
Sudbury	563	536	16	519	1	
Swaleside	751	771	168	602	1	
Swansea	240	410	28	379	3	
Swinfen Hall	600	611	40	569	2	
The Mount	747	763	287	476	0	
The Verne	560	587	379	208	0	
The Wolds	320	368	24	344	0	
Thorn Cross	322	200	1	198	1	
Usk/Prescoed	317	381	14	367	0	
Wakefield	748	749	53	694	2	
Wandsworth	965	1,444	426	962	56	
Warren Hill	222	207	21	173	13	
Wayland	657	714	102	610	1	
Wealstun	885	799	46	753	0	
Wellingborough	636	642	106	533	3	
Werrington	160	104	7	92	6	
Wetherby	360	344	13	326	5	
Whatton	757	817	75	742	0	
Whitemoor	464	456	60	396	0	
Winchester	380	544	73	468	3	
Woodhill	641	770	113	634	23	
Wormwood Scrubs	1,173	1,242	505	711	25	
Wymott	1,005	1,049	55	993	1	
TOTAL	67,695	75,275	10,337	64,099	840	
Police Cells	*	0	0	0	0	
Males	TOTAL in Custody	67,695	75,275	10,337	64,099	840

Table 4: CNA and population by sex and establishment

31 December 2007

Establishment	In use CNA	Population Total	Of which:		Nationality not recorded	
			Foreign nationals	UK nationals		
Females						
Askham Grange	126	112	2	110	0	
Bronzefield	450	422	132	247	43	
Downview	358	346	96	246	4	
Drake Hall	315	290	76	213	1	
East Sutton Park	98	89	13	76	0	
Eastwood Park	326	318	45	267	5	
Foston Hall	283	248	14	231	3	
Holloway	498	465	156	295	14	
Low Newton	291	299	17	280	2	
Morton Hall	392	355	273	82	0	
New Hall	393	401	25	370	7	
Peterborough	360	346	52	288	6	
Send	216	211	28	182	1	
Styal	450	428	44	377	6	
TOTAL	4,556	4,330	973	3,264	92	
Police Cells	*	0	0	0	0	
Females	TOTAL in Custody	4,556	4,330	974	3,264	92
Males and Females TOTAL		72,251	79,605	11,310	67,363	932

In Use CNA - Certified Normal Accommodation that is available for immediate use, excludes damaged cells, cells affected by building works and cells taken out of use due to staff shortages

* On 31st December up to 200 police cells available under operation safeguard which are not included in the CNA figure.

Data Sources and Quality

These figures have been drawn from administrative IT systems, which, as with any large scale recording system, are subject to possible errors with data entry and processing. See Data Sources and Quality section of report for more information.

Table 5: Population in prison by nationality and sex
England and Wales 31st December 2007

Nationality	Male	Female	Total	Nationality	Male	Female	Total
All nationalities	75,275	4,330	79,605				
UK nationals	64,099	3,264	67,363				
Foreign nationals	10,337	974	11,310				
Not recorded	840	92	932				
<hr/>							
Total Africa	2,961	436	3,397	Total Europe	2,957	207	3,164
Algeria	161	1	162	Albania	147	2	149
Angola	76	4	80	Armenia	5	0	5
Benin	5	0	5	Austria	14	3	17
Botswana	1	1	2	Azerbaijan	3	0	3
Burundi	8	0	8	Belgium	33	1	34
Cameroon, United Republic	48	2	49	Bosnia-Herzegovina	7	3	10
Cape Verde	1	0	1	Bulgaria	26	15	41
Central African Republic	11	3	14	Croatia	6	0	6
Chad	2	0	2	Cyprus	43	2	45
Congo	123	5	128	Czech Republic	56	3	59
Congo, Democratic Republic	33	1	34	Denmark	8	0	8
Djibouti	1	0	1	Estonia	17	2	19
Egypt	16	0	16	Finland	3	1	4
Ethiopia	54	1	55	France	153	14	167
Gambia	48	4	52	Georgia	19	0	19
Ghana	195	34	229	Germany	108	11	119
Guinea	18	1	19	Gibraltar	3	0	3
Guinea/Bissau	2	0	2	Greece	15	3	18
Ivory Coast	35	1	36	Hungary	26	3	29
Kenya	61	10	71	Irish Republic	609	30	639
Liberia	26	9	35	Italy	88	7	94
Libya	16	0	16	Kazakhstan	5	0	5
Madagascar	0	1	1	Kyrgyzstan	3	0	3
Malawi	14	3	17	Latvia	48	2	50
Mali	1	0	1	Lithuania	191	12	203
Mauritania	4	0	4	Macedonia	7	0	7
Mauritius	19	1	20	Malta	8	0	8
Morocco	45	1	46	Moldova	18	3	21
Mozambique	4	1	5	Netherlands	105	11	116
Namibia	4	1	5	Norway	4	0	4
Niger	3	0	3	Poland	339	20	359
Nigeria	917	229	1,146	Portugal	175	7	182
Rwanda	17	0	17	Romania	151	21	172
Senegal	7	1	8	Russia	98	11	109
Sierra Leone	84	6	91	San Marino	1	0	1
Somalia	382	12	394	Serbia and Montenegro	100	1	101
South Africa	167	49	216	Slovakia	24	2	26
Sudan	44	3	47	Slovenia	5	1	6
Swaziland	1	0	1	Spain	54	7	61
Tanzania	18	2	20	Sweden	10	5	15
Togo	5	3	8	Switzerland	6	1	7
Tongo	1	0	1	Turkey	211	4	215
Tunisia	22	2	24	Turkmenistan	1	0	1
Uganda	77	8	85	Uzbekistan	3	0	3
Western Sahara	2	0	2				
Zambia	14	2	16	Total Middle East	584	5	589
Zimbabwe	168	33	200	Iran	205	2	207
				Iraq	267	1	268
Total Asia	1,973	131	2,104	Israel	24	0	24
Afghanistan	109	1	110	Jordan	9	0	9
Bangladesh	154	3	157	Kuwait	9	0	9
Burma	5	0	5	Lebanon	27	1	28
Cambodia	1	0	1	Oman	1	0	1
China	337	49	386	Qatar	1	0	1
Hong Kong	4	0	4	Saudi Arabia	14	1	15
India	318	5	323	Syrian Arab Republic	6	0	6
Indonesia	4	0	4	United Arab Emirates	8	0	8
Japan	0	1	1	Yemen, Republic of	12	0	12
Korea, Dem Peoples Rep (Nth)	1	1	2				
Korea, Republic of (Sth)	6	0	6	Total North America	121	10	131
Malaysia	38	7	45	Canada	20	6	26
Mongolia	8	0	8	United States of America	101	4	105
Nepal	3	0	3				
Pakistan	397	9	406	Total Oceania	44	4	48
Philippines	18	3	21	Australia	23	3	26
Singapore	3	3	6	Canton & Enderbury Island	1	0	1
Sri Lanka	143	2	145	Fiji	9	0	9
Thailand	4	7	11	French Southern Territories	2	0	2
Vietnam	420	40	460	Kiribati	1	0	1
				New Zealand	8	1	9

Table 5: Population in prison by nationality and sex
England and Wales 31st December 2007

Nationality	Male	Female	Total	Nationality	Male	Female	Total
All nationalities	75,275	4,330	79,605				
UK nationals	64,099	3,264	67,363				
Foreign nationals	10,337	974	11,310				
Not recorded	840	92	932				
<hr/>				<hr/>			
Total Central and South America	294	42	335	Total West Indies	1,399	140	1,539
Argentina	3	1	4	Anguilla	1	0	1
Belize	2	0	2	Bahamas	4	0	4
Bolivia	6	0	6	Barbados	34	2	36
Brazil	57	7	64	Bermuda	3	0	3
Chile	10	0	10	Cayman Islands	1	0	1
Columbia	104	8	112	Cuba	5	0	5
Costa Rica	2	1	3	Dominica	10	2	12
Ecuador	12	1	13	Dominican Republic	8	2	10
El Salvador	0	1	1	Federation of St Christopher and Nevis	2	0	2
French Guyana	3	2	5	Grenada	13	4	17
Guatemala	4	0	4	Haiti	3	0	3
Guyana	30	8	38	Jamaica	1,185	93	1,278
Honduras	1	0	1	Montserrat	20	1	21
Mexico	25	8	33	Netherlands Antilles	7	5	12
Panama	4	0	4	St Lucia	25	8	32
Paraguay	0	1	1	St Vincent & The Grenadines	9	2	11
Peru	6	1	7	Trinidad and Tobago	69	21	90
Surinam	8	1	9			0	0
Uruguay	1	0	1	Total other	4	0	4
Venezuela	15	2	17				

Data Sources and Quality

These figures have been drawn from administrative IT systems. Care is taken when processing and analysing the returns, but the detail collected is subject to the inaccuracies inherent in any large scale recording system, and so although shown to the last individual, the figure may not be accurate to that level.