



Ministry of
JUSTICE

NOMS National Offender
Management Service
Working together to reduce re-offending

Population in Custody MONTHLY TABLES

April 2007
England and Wales

Population in custody April 2007 - Key points

RDS NOMS

Population in custody

- The population in custody on 30 April 2007 was 80,955, 5 per cent more than a year earlier. The population in prisons was 80,261, in police cells it was 208, in Secure Training Centres (STCs) it was 256, and in Secure Children's Homes (SCHs) it was 229.

Population in prison

- The male prison population increased by 5 per cent to 75,891 and the female prison population decreased 1 per cent to 4,370.
- The remand population in prison decreased by 4 per cent to 12,777 in April 2007 compared to April 2006. Within this total, the untried population remained stable at 8,285 and the convicted unsentenced population decreased 10 per cent to 4,492.
- Amongst the remand population the largest percentage decreases since April 2006 were seen in motoring offences, theft and handling and other offences down by 24, 23 and 10 per cent respectively. The only increases were seen in drug offences, which was up 13 per cent and violence against the person up 1 per cent.
- There were 65,916 sentenced⁽¹⁾ prisoners at 30 April 2007, an increase of 6 per cent from a year earlier. The largest proportionate increases since April 2006 were for those sentenced to indeterminate sentences (Life sentences and Indeterminate sentences for Public Protection) which increased by 31 per cent.
- Amongst the sentenced⁽¹⁾ prison population 'other offences', violence against the person and sexual offences saw the largest percentage increases up by 13, 12 and 12 per cent respectively from April 2006. The number of people serving sentences for motoring offences saw the largest percentage decrease since April 2006, down by 13 per cent.
- The adult population in prison was 68,434 at 30 April 2007, an increase of 4 per cent from a year earlier. The young adult and 15-17 year olds population in prison also saw an increase over this time period with young adults up by 9 per cent to 9,425 and 15 to 17 year olds up by 3 per cent to 2,402.
- The prison population was 113 per cent of the 'In Use CNA' (71,288) at 30 April 2007.

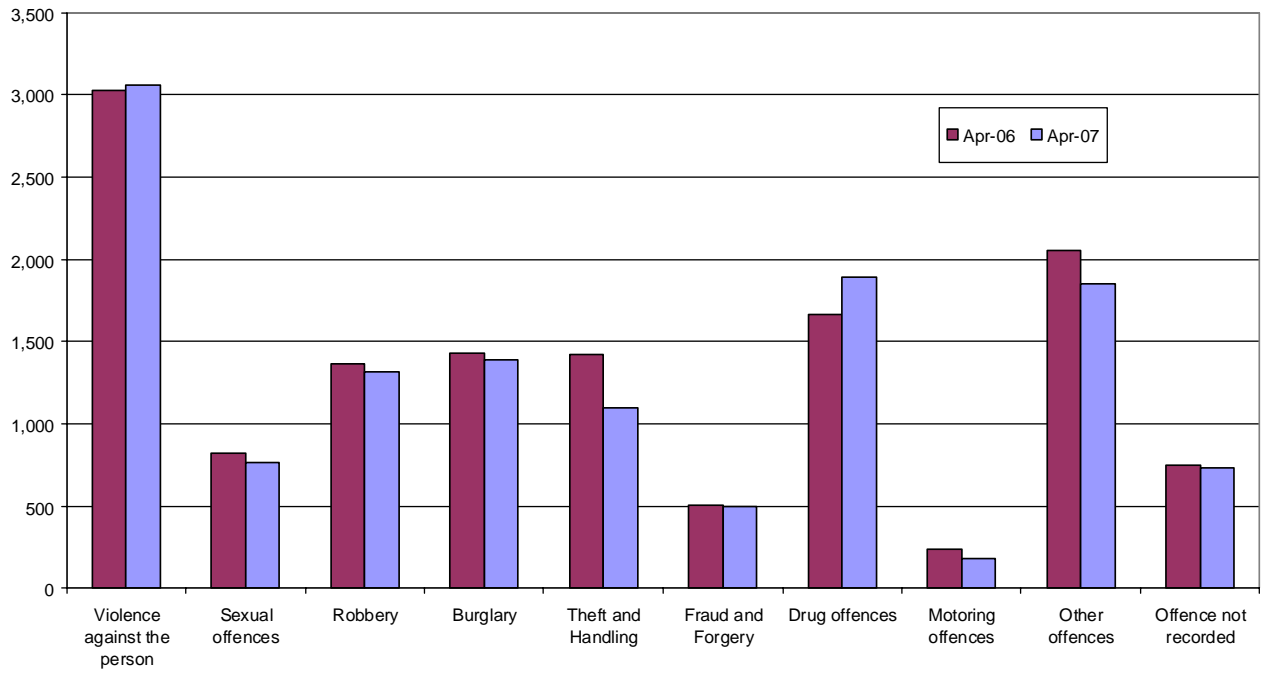
(1) Excludes fine defaulters

For further queries:

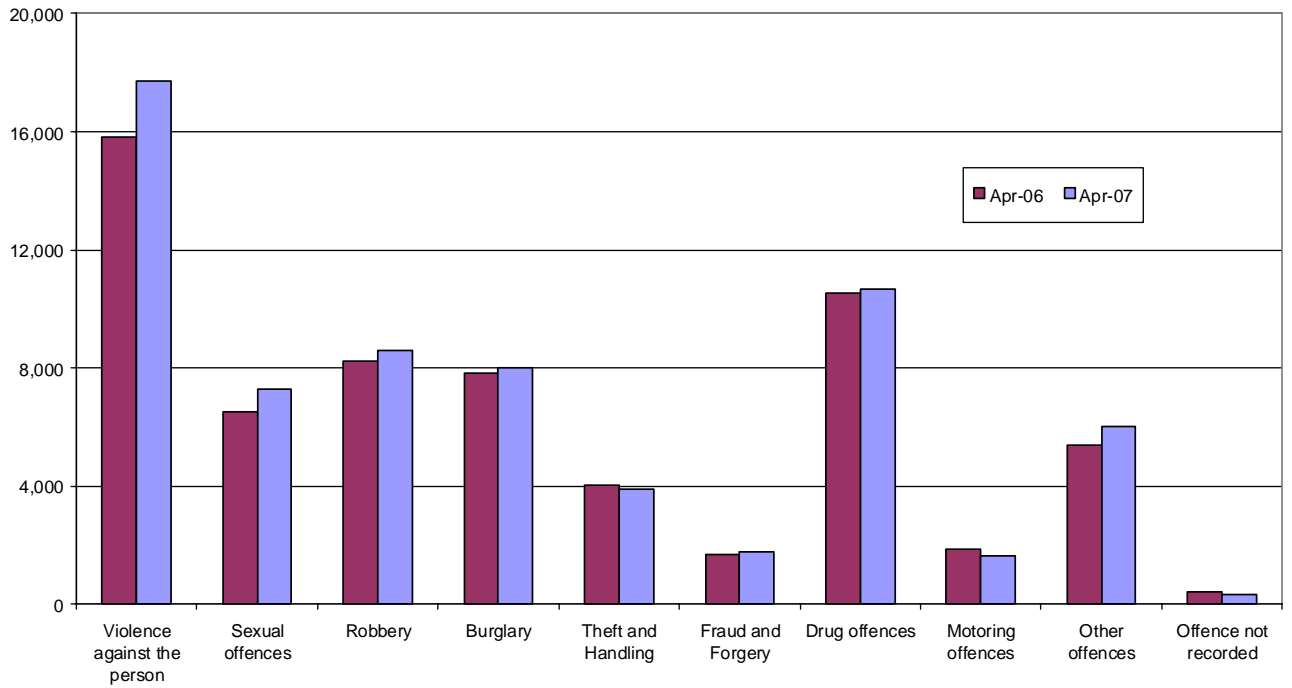
E-mail: rdsnomsstatistics@justice.gsi.gov.uk

Press enquiries - Press Office 020 7210 0638

Remand population by offence group



Immediate custodial sentenced population by offence group



NOTES

Data sources and quality

The data presented in this brief are drawn from the prison administrative IT systems. Although care is taken when processing and analysing the returns, the detail collected is subject to the inaccuracies inherent in any large-scale recording system. While the figures shown have been checked as far as practicable, they must be approximate and not necessarily accurate to the last whole number shown in the tables. They are fit to be used for purposes of looking at trends and for comparing the relative magnitude of components.

We are currently undertaking a programme of work to audit the quality of our data, and to identify priorities for improvements. This may lead to changes in future tables.

The prison population information has been drawn from two prison sources. The first source is the routine provision by prison establishments of records of the numbers of persons held in custody at the end of each month, broadly subdivided according to age, sex, custody type and sentence length. The records are collated and processed centrally, to produce the main estimates of the end of month population presented. The second source is the electronically held details for individual inmates such as date of birth, sex, religion, ethnic origin, custody type, offence, and reception and discharge dates and, for sentenced prisoners, sentence length. These data are collected on a central computer database and are used to produce the analyses by offence group and individual year of age. They form the basis of detailed population breakdowns, supplementing the aggregates derived from the first source, to which they are scaled for consistency. A new more detailed method of scaling this information was developed in 2004.

Because the detailed population breakdowns have been scaled and also rounded to the nearest whole number, individual components may not sum to the totals.

Information on the population in STCs and SCHs has been supplied by the Youth Justice Board.

All figures are provisional pending publication of the annual Offender Management Caseload statistical publication.

Definitions

Population in custody - this includes those held in prison establishments, police cells under Operation Safeguard, secure training centres (STCs) and Local Authority secure children's homes (SCHs). This is a change to previous outputs (notably Prison Population Monthly Brief and Prison Statistics England and Wales) where the reference to 'population in custody' just covered those held in prison establishments and police cells. All coverage is for England and Wales.

Population in prison – this includes those held in prisons in England and Wales, including the three removal centres of Dover, Haslar and Lindholme.

Sentenced population – this includes those sentenced to an immediate custodial sentence and fine defaulters.

Immediate custodial sentence – this does not include fine defaulters.

Adult prisoners – these are prisoners aged 21 years and over.

Young adults – these are prisoners aged 18 to 20, but including 21 year old prisoners who were aged 20 or under at conviction who have not been reclassified as part of the adult population

Indeterminate sentences – these cover life sentences and indeterminate sentences for public protection (IPP).

Table 1: Population in custody: by type of custody and sex

	Apr-06			Apr-07			Percentage change 2006 to 2007		
	Males	Females	Total	Males	Females	Total	Males	Females	Total
All population in custody, of which	72,700	4,538	77,238	76,452	4,502	80,954	5	-1	5
Prisons	72,364	4,400	76,764	75,891	4,370	80,261	5	-1	5
Police cells	0	0	0	208	0	208	*	*	*
SCHs	183	45	228	190	39	229	4	*	0
STCs	153	93	246	163	93	256	7	0	4
All population in prison, of which	72,364	4,400	76,764	75,891	4,370	80,261	5	-1	5
Remand	12,364	919	13,283	11,859	918	12,777	-4	0	-4
untried	7,803	511	8,314	7,679	606	8,285	-2	19	0
convicted unsentenced	4,561	408	4,969	4,180	312	4,492	-8	-24	-10
Under sentence	58,908	3,437	62,345	62,591	3,403	65,994	6	-1	6
Fine defaulter	71	4	75	70	6	76	-1	*	1
Less than or equal to 6 months	5,245	476	5,721	5,022	510	5,532	-4	7	-3
Greater than 6 months to less than 12 months	2,184	237	2,421	2,344	237	2,581	7	0	7
12 months to less than 4 years	19,947	1,268	21,215	21,615	1,202	22,817	8	-5	8
4 years or more (excluding Indeterminate sentences)	24,700	1,232	25,932	24,703	1,161	25,864	0	-6	0
Indeterminate sentences	6,761	220	6,981	8,837	287	9,124	31	30	31
Non-criminal prisoners	1,092	44	1,136	1,441	49	1,490	32	*	31
All adult population in prison, of which	61,929	3,901	65,830	64,537	3,897	68,434	4	0	4
Remand	9,934	802	10,736	9,463	785	10,248	-5	-2	-5
untried	6,254	449	6,703	6,185	522	6,707	-1	16	0
convicted unsentenced	3,680	353	4,033	3,278	263	3,541	-11	-25	-12
Under sentence	51,004	3,060	54,064	53,714	3,065	56,779	5	0	5
Fine defaulter	69	4	73	69	6	75	0	*	3
Less than or equal to 6 months	4,012	397	4,409	3,756	437	4,193	-6	10	-5
Greater than 6 months to less than 12 months	1,613	205	1,818	1,691	207	1,898	5	1	4
12 months to less than 4 years	15,827	1,085	16,912	16,996	1,046	18,042	7	-4	7
4 years or more (excluding Indeterminate sentences)	23,054	1,166	24,220	22,979	1,098	24,077	0	-6	-1
Indeterminate sentences	6,429	203	6,632	8,223	271	8,494	28	33	28
Non-criminal prisoners	991	39	1,030	1,360	47	1,407	37	*	37
All 15 -17 year olds in prison, of which	2,257	63	2,321	2,341	61	2,402	4	-3	3
Remand	553	22	575	518	18	536	-6	*	-7
untried	371	14	385	328	13	341	-12	*	-11
convicted unsentenced	182	8	190	190	5	195	4	*	3
Under sentence	1,702	41	1,743	1,821	43	1,864	7	*	7
Fine defaulter	0	0	0	0	0	0	*	*	*
Less than or equal to 6 months	460	10	469	452	11	463	-2	*	-1
Greater than 6 months to less than 12 months	223	8	232	251	7	258	13	*	11
12 months to less than 4 years	853	20	873	927	21	948	9	*	9
4 years or more (excluding Indeterminate sentences)	128	2	130	124	4	128	-3	*	-2
Indeterminate sentences	38	1	39	67	0	67	*	*	*
Non-criminal prisoners	2	0	2	2	0	2	*	*	*
All young adults in prison, of which	8,178	436	8,613	9,013	412	9,425	10	-6	9
Remand	1,877	95	1,972	1,878	115	1,993	0	21	1
untried	1,178	48	1,226	1,166	71	1,237	-1	*	1
convicted unsentenced	699	47	746	712	44	756	2	*	1
Under sentence	6,202	336	6,538	7,056	295	7,351	14	-12	12
Fine defaulter	2	0	2	1	0	1	*	*	*
Less than or equal to 6 months	773	69	843	814	62	876	5	-10	4
Greater than 6 months to less than 12 months	348	24	371	402	23	425	16	*	15
12 months to less than 4 years	3,267	163	3,430	3,692	135	3,827	13	-17	12
4 years or more (excluding Indeterminate sentences)	1,518	64	1,582	1,600	59	1,659	5	-8	5
Indeterminate sentences	294	16	310	547	16	563	86	*	82
Non-criminal prisoners	99	5	104	79	2	81	-20	*	-22

Young adults are those aged 18 - 20 and those 21 year olds who were aged 20 or under at conviction who have not been reclassified as part of the adult population

* indicates that one or both of the comparative numbers are less than 50 which could give rise to misleading percentage changes

Data Sources and Quality

These figures have been drawn from administrative IT systems, which, as with any large scale recording system, are subject to possible errors with data entry and processing. See Data Sources and Quality section of report for more information.

Table 2: Population in prison by offence - remand and immediate custodial sentence

	Apr-06		Apr-07		Percentage change 2006 to 2007	
	Remand	Immediate custodial sentence	Remand	Immediate custodial sentence	Remand	Immediate custodial sentence
All prisoners	13,283	62,270	12,777	65,916	-4	6
Violence against the person	3,024	15,832	3,063	17,698	1	12
Sexual offences	822	6,513	767	7,286	-7	12
Robbery	1,363	8,251	1,317	8,601	-3	4
Burglary	1,427	7,797	1,387	8,016	-3	3
Theft and Handling	1,426	4,033	1,098	3,874	-23	-4
Fraud and Forgery	508	1,676	495	1,757	-3	5
Drug offences	1,668	10,528	1,890	10,677	13	1
Motoring offences	241	1,872	183	1,634	-24	-13
Other offences	2,054	5,358	1,848	6,029	-10	13
Offence not recorded	751	408	729	344	-3	-16
All male prisoners	12,364	58,837	11,859	62,521	-4	6
Violence against the person	2,897	15,185	2,920	17,014	1	12
Sexual offences	813	6,480	757	7,240	-7	12
Robbery	1,301	7,936	1,257	8,297	-3	5
Burglary	1,380	7,581	1,340	7,810	-3	3
Theft and Handling	1,246	3,601	968	3,433	-22	-5
Fraud and Forgery	418	1,447	401	1,515	-4	5
Drug offences	1,510	9,374	1,706	9,639	13	3
Motoring offences	233	1,839	177	1,608	-24	-13
Other offences	1,899	5,013	1,690	5,646	-11	13
Offence not recorded	666	380	643	319	-3	-16
All female prisoners	919	3,433	918	3,395	0	-1
Violence against the person	127	647	143	684	13	6
Sexual offences	9	33	10	46	*	*
Robbery	62	315	60	304	-3	-3
Burglary	47	216	47	206	*	-5
Theft and Handling	180	432	130	441	-28	2
Fraud and Forgery	90	229	94	242	4	6
Drug offences	158	1,154	184	1,038	16	-10
Motoring offences	8	33	6	26	*	*
Other offences	154	345	158	383	3	11
Offence not recorded	84	28	86	25	2	*

Table 2: Population in prison by offence - remand and immediate custodial sentence

	Apr-06		Apr-07		Percentage change 2006 to 2007	
	Remand	Immediate custodial sentence	Remand	Immediate custodial sentence	Remand	Immediate custodial sentence
All adult prisoners	10,736	53,991	10,247	56,704	-5	5
Violence against the person	2,409	13,648	2,416	15,126	0	11
Sexual offences	716	6,189	672	6,907	-6	12
Robbery	807	6,272	780	6,366	-3	1
Burglary	1,131	6,705	1,090	6,772	-4	1
Theft and Handling	1,184	3,391	874	3,268	-26	-4
Fraud and Forgery	470	1,605	470	1,699	0	6
Drug offences	1,488	9,834	1,682	9,926	13	1
Motoring offences	187	1,567	152	1,411	-19	-10
Other offences	1,727	4,434	1,497	4,958	-13	12
Offence not recorded	617	346	614	271	0	-22
All adult male prisoners	9,934	50,935	9,462	53,644	-5	5
Violence against the person	2,307	13,102	2,306	14,558	0	11
Sexual offences	707	6,161	662	6,862	-6	11
Robbery	764	6,026	737	6,129	-4	2
Burglary	1,093	6,506	1,048	6,583	-4	1
Theft and Handling	1,024	2,996	756	2,856	-26	-5
Fraud and Forgery	385	1,393	380	1,467	-1	5
Drug offences	1,341	8,764	1,517	8,931	13	2
Motoring offences	179	1,537	146	1,388	-18	-10
Other offences	1,596	4,128	1,371	4,619	-14	12
Offence not recorded	539	321	539	251	0	-22
All adult female prisoners	802	3,056	785	3,060	-2	0
Violence against the person	103	546	110	568	7	4
Sexual offences	9	28	10	45	*	*
Robbery	43	245	43	237	*	-3
Burglary	38	199	42	189	*	-5
Theft and Handling	160	395	118	412	-26	4
Fraud and Forgery	85	213	90	232	6	9
Drug offences	147	1,069	165	995	12	-7
Motoring offences	8	31	6	23	*	*
Other offences	132	305	126	339	-5	11
Offence not recorded	78	25	75	20	-4	*

Table 2: Population in prison by offence - remand and immediate custodial sentence

	Apr-06		Apr-07		Percentage change 2006 to 2007	
	Remand	Immediate custodial sentence	Remand	Immediate custodial sentence	Remand	Immediate custodial sentence
All aged 15-17	575	1,743	537	1,864	-7	7
Violence against the person	130	381	143	435	10	14
Sexual offences	32	63	23	60	*	-5
Robbery	174	459	150	514	-14	12
Burglary	65	261	47	309	*	18
Theft and Handling	45	199	40	174	*	-13
Fraud and Forgery	8	1	4	3	*	*
Drug offences	29	63	36	77	*	22
Motoring offences	11	58	2	39	*	*
Other offences	62	240	72	238	16	-1
Offence not recorded	18	17	20	15	*	*
All males aged 15-17	553	1,702	519	1,822	-6	7
Violence against the person	124	371	141	417	14	12
Sexual offences	32	61	23	60	*	-2
Robbery	168	450	148	502	-12	12
Burglary	63	260	47	306	*	18
Theft and Handling	42	195	40	172	*	-12
Fraud and Forgery	8	0	4	3	*	*
Drug offences	29	56	33	76	*	36
Motoring offences	11	57	2	39	*	*
Other offences	57	235	65	234	14	0
Offence not recorded	18	16	16	13	*	*
All females aged 15-17	22	41	18	42	*	*
Violence against the person	6	10	2	18	*	*
Sexual offences	0	2	0	0	*	*
Robbery	6	9	2	12	*	*
Burglary	2	1	0	3	*	*
Theft and Handling	3	4	0	2	*	*
Fraud and Forgery	0	1	0	0	*	*
Drug offences	0	7	3	1	*	*
Motoring offences	0	1	0	0	*	*
Other offences	5	5	7	4	*	*
Offence not recorded	0	1	4	2	*	*

Table 2: Population in prison by offence - remand and immediate custodial sentence

	Apr-06		Apr-07		Percentage change 2006 to 2007	
	Remand	Immediate custodial sentence	Remand	Immediate custodial sentence	Remand	Immediate custodial sentence
All young adults	1,972	6,536	1,993	7,348	1	12
Violence against the person	485	1,804	504	2,137	4	18
Sexual offences	74	261	72	319	-3	22
Robbery	382	1,520	387	1,721	1	13
Burglary	231	830	250	935	8	13
Theft and Handling	197	443	184	432	-7	-2
Fraud and Forgery	29	70	21	55	*	-21
Drug offences	151	631	172	674	14	7
Motoring offences	42	247	29	184	*	-26
Other offences	264	684	279	833	6	22
Offence not recorded	116	45	95	58	-18	*
All male young adults	1,877	6,200	1,878	7,055	0	14
Violence against the person	467	1,713	473	2,039	1	19
Sexual offences	74	258	72	318	-3	23
Robbery	369	1,460	372	1,666	1	14
Burglary	224	814	245	921	9	13
Theft and Handling	179	410	172	405	-4	-1
Fraud and Forgery	25	54	17	45	*	*
Drug offences	140	554	156	632	11	14
Motoring offences	42	245	29	181	*	-26
Other offences	247	649	254	793	3	22
Offence not recorded	109	43	88	55	-19	*
All female young adults	95	336	115	293	21	-13
Violence against the person	18	91	31	98	*	8
Sexual offences	0	3	0	1	*	*
Robbery	13	61	15	55	*	-10
Burglary	7	16	5	14	*	*
Theft and Handling	17	33	12	27	*	*
Fraud and Forgery	4	15	4	10	*	*
Drug offences	11	78	16	42	*	*
Motoring offences	0	2	0	3	*	*
Other offences	18	35	25	40	*	*
Offence not recorded	7	2	7	3	*	*

* indicates that one or both of the comparative numbers are less than 50 which could give rise to misleading percentage changes

Data Sources and Quality

These figures have been drawn from administrative IT systems, which, as with any large scale recording system, are subject to possible errors with data entry and processing. See Data Sources and Quality section of report for more information.

Table 3: Young population in prison: by type of custody and sex

30 April 2007

	15	16	17	Total - under 18	18	19	20	21	Total Young Adults
All young population in prisons, of which									
<i>Prisoners on remand</i>	54	123	360	537	647	647	618	80	1,992
untried	36	86	220	342	379	392	406	60	1,237
convicted unsentenced	18	37	140	195	268	255	212	20	755
<i>Prisoners under sentence</i>	228	562	1,074	1,864	1,577	2,427	2,597	751	7,352
Fine defaulter	0	0	0	0	1	0	0	0	1
Immediate custodial sentence	228	562	1,074	1,864	1,576	2,427	2,597	751	7,351
<i>Non-criminal prisoners</i>	0	0	2	2	7	32	21	20	80
All young male population in prisons, of which									
<i>Prisoners on remand</i>	54	123	342	519	598	619	586	73	1,876
untried	36	86	207	329	350	374	386	55	1,165
convicted unsentenced	18	37	135	190	248	245	200	18	711
<i>Prisoners under sentence</i>	228	562	1,032	1,822	1,499	2,337	2,482	739	7,057
Fine defaulter	0	0	0	0	1	0	0	0	1
Immediate custodial sentence	228	562	1,032	1,822	1,498	2,337	2,482	739	7,056
<i>Non-criminal prisoners</i>	0	0	2	2	7	31	20	20	78
All young female population in prisons, of which									
<i>Prisoners on remand</i>	0	0	18	18	49	28	32	7	116
untried	0	0	13	13	29	18	20	5	72
convicted unsentenced	0	0	5	5	20	10	12	2	44
<i>Prisoners under sentence</i>	0	0	42	42	78	90	115	12	295
Fine defaulter	0	0	0	0	0	0	0	0	0
Immediate custodial sentence	0	0	42	42	78	90	115	12	295
<i>Non-criminal prisoners</i>	0	0	0	0	0	1	1	0	2

Young adults are those aged 18 - 20 and those 21 year olds who were aged 20 or under at conviction who have not been reclassified as part of the adult population

Data Sources and Quality

These figures have been drawn from administrative IT systems, which, as with any large scale recording system, are subject to possible errors with data entry and processing. See Data Sources and Quality section of report for more information.

Table 4: CNA and population by sex and establishment

30 April 2007

Establishment	In use CNA	Establish ment Total
Males		
Acklington	854	849
Albany	525	525
Altcourse+	614	1,105
Ashfield+	400	386
Ashwell	535	544
Aylesbury	437	443
Bedford	325	478
Belmarsh+	799	919
Birmingham	1,121	1,452
Blakenhurst+	821	1,070
Blantyre House	122	120
Blundestone	420	464
Brinsford+	473	456
Bristol+	420	607
Brixton	606	806
Brockhill+	170	169
Buckley Hall	350	384
Bullingdon+	759	961
Bullwood Hall	180	182
Camp Hill	523	594
Canterbury+	196	276
Cardiff	524	760
Castington+	400	385
Channings Wood	634	658
Chelmsford+	468	723
Coldingley	370	390
Dartmoor	618	629
Deerbolt	444	403
Doncaster+	771	1,142
Dorchester+	147	245
Dovegate	800	833
Dover	316	309
Durham+	591	975
Edmunds Hill	366	366
Elmley+	753	986
Erlestoke	426	418
Everthorpe	642	678
Exeter	316	495
Featherstone	599	609
Feltham+	764	629
Ford	541	457
Forest Bank+	800	1,060
Frankland	727	714
Full Sutton	592	582
Garth	584	611
Gartree	570	575
Glen Parva+	668	810
Gloucester	225	306
Grendon/Spring Hill+	574	547
Guys Marsh+	520	562
Haslar	124	119
Haverigg	558	568
Hewell Grange	187	181
Highdown+	643	762
Highpoint	792	812

Table 4: CNA and population by sex and establishment

30 April 2007

Establishment	In use CNA	Establishment Total
Hindley+	515	493
Hollesley Bay+	330	305
Holme House+	857	1,002
Hull+	723	1,055
Huntercombe	360	362
Kingston(Portsmouth)	199	198
Kirkham	588	508
Kirklevington	223	222
Lancaster	157	237
Lancaster Farms+	480	512
Latchmere House	207	204
Leeds	678	1,019
Leicester	206	362
Lewes+	458	532
Leyhill	512	432
Lincoln	314	534
Lindholme+	982	1,015
Littlehey	663	697
Liverpool	1,131	1,347
Long Lartin	454	442
Lowdham Grange	640	609
Maidstone	559	575
Manchester	954	1,247
Moorland Open+	260	222
Moorland+	740	784
North Sea Camp	306	303
Northallerton	153	244
Norwich+	535	611
Nottingham	383	550
Onley+	640	619
Parc+	838	1,128
Parkhurst+	462	525
Pentonville	819	1,155
Peterborough+	480	576
Portland+	519	547
Preston	429	737
Ranby	912	1,024
Reading+	190	262
Risley	1,038	1,081
Rochester	392	388
Rye Hill	600	646
Shepton Mallet	165	188
Shrewsbury	181	338
Stafford	680	672
Standford Hill	464	419
Stocken	595	621
Stoke Heath+	574	661
Sudbury	563	500
Swaleside	756	776
Swansea	240	419
Swinfen Hall	600	618
The Mount	704	715
The Verne	558	590
The Wolds	320	373
Thorn Cross+	322	223
Usk/Prescoed+	317	394
Wakefield	748	745

Table 4: CNA and population by sex and establishment

30 April 2007

Establishment	In use CNA	Establishment Total
Wandsworth	965	1,482
Warren Hill+	222	217
Wayland	657	697
Wealstun+	885	796
Wellingborough	636	643
Werrington	160	156
Wetherby+	360	323
Whatton	698	755
Whitemoor	464	448
Winchester+	378	544
Woodhill+	641	826
Wormwood Scrubs	1,173	1,289
Wymott	1,005	1,064
TOTAL	66,621	75,892
Police Cells	*	209
Males TOTAL in Custody	66,621	76,101
Females		
Askham Grange	126	99
Bronzefield	450	447
Cookham Wood+	127	186
Downview+	358	353
Drake Hall+	315	246
East Sutton Park+	98	100
Eastwood Park+	326	348
Foston Hall	283	241
Holloway+	487	441
Low Newton+	285	262
Morton Hall	392	297
New Hall+	393	371
Peterborough+	360	338
Send	218	208
Styal+	449	432
TOTAL	4,667	4,369
Police Cells	*	0
Females TOTAL in Custody	4,667	4,369
Males and Females TOTAL	71,288	80,470

In Use CNA - Certified Normal Accommodation that is available for immediate use, excludes damaged cells, cells affected by building works and cells taken out of use due to staff shortages

+ Establishments with more than one unit

* There are currently up to 400 police cells available under operation safeguard which are not included in the CNA figure.