

STATISTICS RELEASE: INSOLVENCIES IN THE FOURTH QUARTER 2010

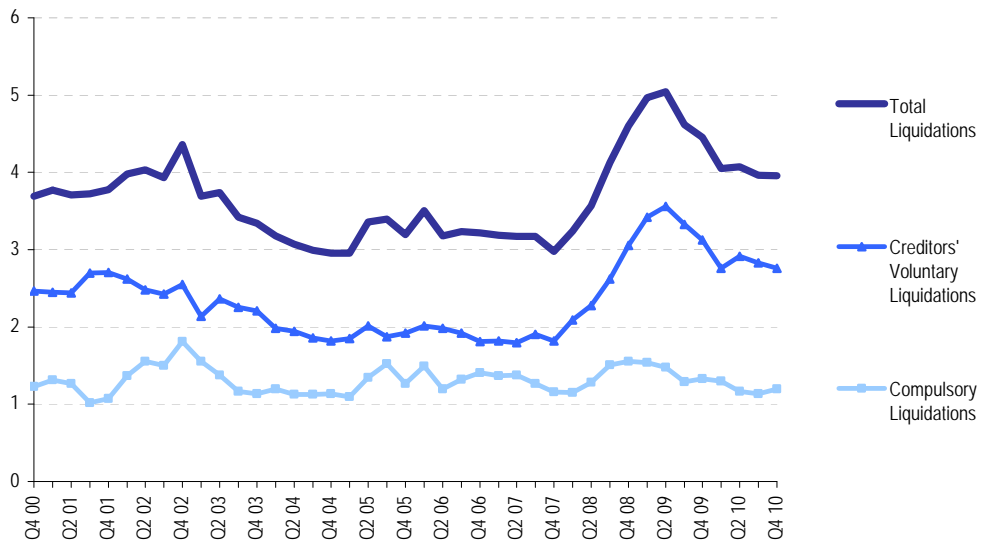
Statistics showing insolvencies in the fourth quarter of 2010 are published today (4 February) by the Insolvency Service.

COMPANY INSOLVENCIES

There were 3,955 compulsory liquidations and creditors' voluntary liquidations in total in England and Wales in the fourth quarter of 2010 (on a seasonally adjusted basis). This was a decrease of 0.2% on the previous quarter and a decrease of 11.3% on the same period a year ago.

Figure 1. Company Liquidations in England & Wales

Thousands, seasonally adjusted



Source: Insolvency Service and Companies House

This was made up of 1,200 compulsory liquidations (which are up 5.8% on the previous quarter but down 9.9% on the corresponding quarter of the previous year), and 2,755 creditors' voluntary liquidations (which are down 2.6% on the previous quarter but down 11.8% on the corresponding quarter of the previous year).

Table I. Company Liquidations in England and Wales (seasonally adjusted) ¹

	2009 Q4	2010 Q1 r	2010 Q2 r	2010 Q3 r	2010 Q4 p	% change – Q4 2010 on	
						Q4 2009	Q3 2010
Company Liquidations	4,457	4,051	4,074	3,964	3,955	-11.3	-0.2
of which: Compulsory	1,331	1,295	1,164	1,134	1,200	-9.9	5.8
Creditors' Voluntary ²	3,126	2,757	2,911	2,830	2,755	-11.8	-2.6

Source: Insolvency Service and Companies House

p = provisional, r = revised

¹ Longer series back to 2001 are presented in the accompanying detailed tables.

² Where the creditors' voluntary liquidation is the first insolvency procedure entered into (see Notes to Editors).

Additionally, there were 1,114 other corporate insolvencies in the fourth quarter of 2010 (not seasonally adjusted) comprising 302 receiverships, 642 administrations and 170 company voluntary arrangements. In total these represented a decrease of 24.0% on the same period a year ago. Within this, administrations were down 24.4%.

Table II. Other Corporate Insolvencies in England and Wales (not seasonally adjusted) ¹

	2009 Q4	2010 Q1	2010 Q2	2010 Q3	2010 Q4 p	% change – Q4 2010 on	
						Q4 2009	
Receiverships ²	397	356	302	349	302	-23.9	
Administrations ³	849	783	777	633	642	-24.4	
Company voluntary arrangements	219	204	232	159	170	-22.4	

Source: Companies House

p = provisional,

¹ Longer series back to 2001 are presented in the accompanying detailed tables.

² Includes Law of Property Act receivers (see "Notes to Editors" paragraph 9).

³ Includes Administrator Appointments.

Note: The figures in Table II are not seasonally adjusted and are not, therefore, on the same basis as the headline figures in Table I. The accompanying detailed tables also include the non-seasonally adjusted series for corporate liquidations.

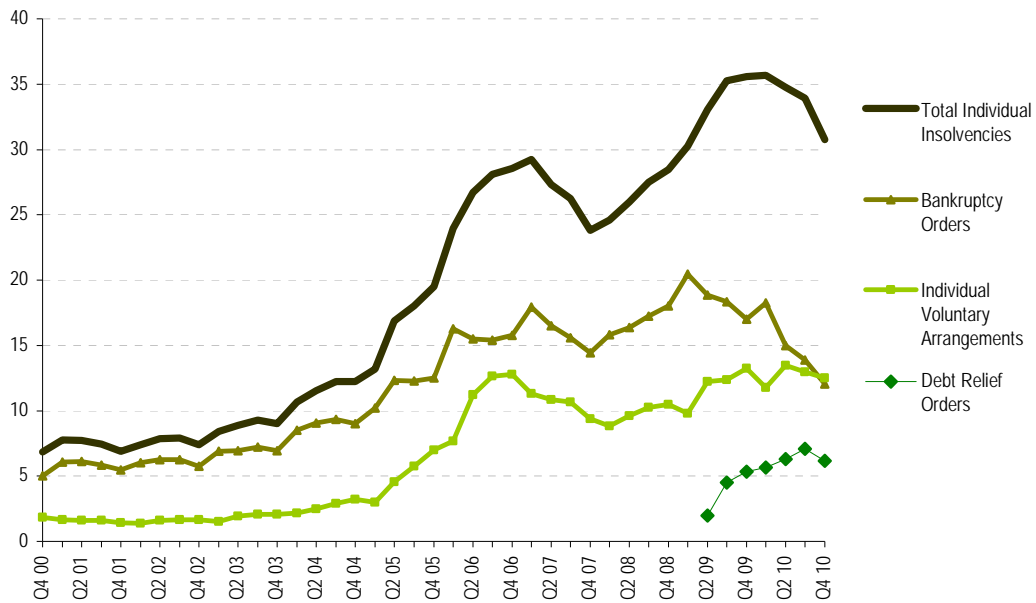
INDIVIDUAL INSOLVENCIES (not seasonally adjusted - see 'Notes to Editors' paragraph 13)

There were 30,729 individual insolvencies in England and Wales in the fourth quarter of 2010. This was a decrease of 13.6% on the same period a year ago.

This was made up of 12,049 bankruptcies (which were down 29.2% on the corresponding quarter of the previous year), 12,508 Individual Voluntary Arrangements (IVAs), (which were down 5.4% on the corresponding quarter of the previous year) and 6,172 Debt Relief Orders (DROs), (which were up 15.4% on the corresponding quarter of the previous year) (see 'Notes to Editors' paragraph 12).

Figure 2. Individual insolvencies in England & Wales

Thousands, not seasonally adjusted



Source: Insolvency Service
 Total individual insolvencies for Q2 2009 onwards include Debt Relief Orders, which came into force on 6 April 2009

In the fourth quarter of 2010, 85.4% of bankruptcies were made on the petition of the debtor, broadly comparable to the levels for recent quarters. The percentage of bankruptcy orders involving trading debts (self-employed bankruptcies) was 11.9% in the third quarter of 2010 (fourth quarter 2010 figures for trading-related bankruptcies are not yet available), a little lower than the levels seen throughout 2009 and the first half of 2010.

Table III. Individual Insolvencies in England and Wales (not seasonally adjusted) ¹

	2009 Q4	2010 Q1	2010 Q2	2010 Q3	2010 Q4 p	% change – Q4 2010 on
						Q4 2009
Total Individuals	35,574	35,682	34,743	33,935	30,729	-13.6
Bankruptcy Orders	17,007	18,256	14,982	13,907	12,049	-29.2
Debt Relief Orders	5,348	5,644	6,295	7,068	6,172	15.4
Individual Voluntary Arrangements	13,219	11,782	13,466	12,960	12,508	-5.4

Source: Insolvency Service

p = provisional

¹ Longer series back to 2001 are presented in the accompanying detailed tables, as are seasonally adjusted figures for individual voluntary arrangements (and for bankruptcy orders up to Q1 2009 only)

STATISTICS RELEASE: 2010 SUMMARY, ENGLAND AND WALES

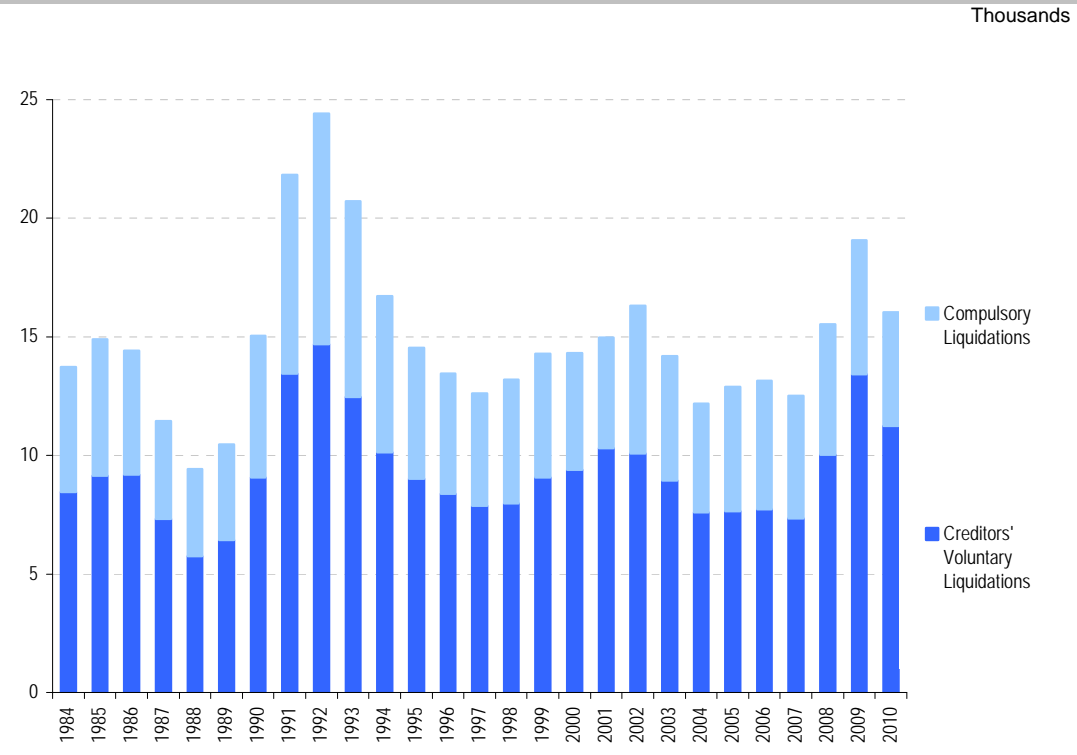
COMPANY INSOLVENCIES

There were 16,045 compulsory liquidations and creditors' voluntary liquidations in total in 2010 – a decrease of 15.9% on 2009.

This was made up of 4,792 compulsory liquidations (which are down 15.1% on 2009), and 11,253 creditors' voluntary liquidations (which are down 16.2% on 2009).

Figure 3 shows trends in company liquidations since 1984.

Figure 3. Liquidations in England & Wales, 1984-2010



Source: Insolvency Service and Companies House

In 2010 there were also 4,909 other corporate insolvencies, comprising 1,309 receiverships, 2,835 administrations and 765 company voluntary arrangements. In total these represented a decrease of 22.8% on 2009.

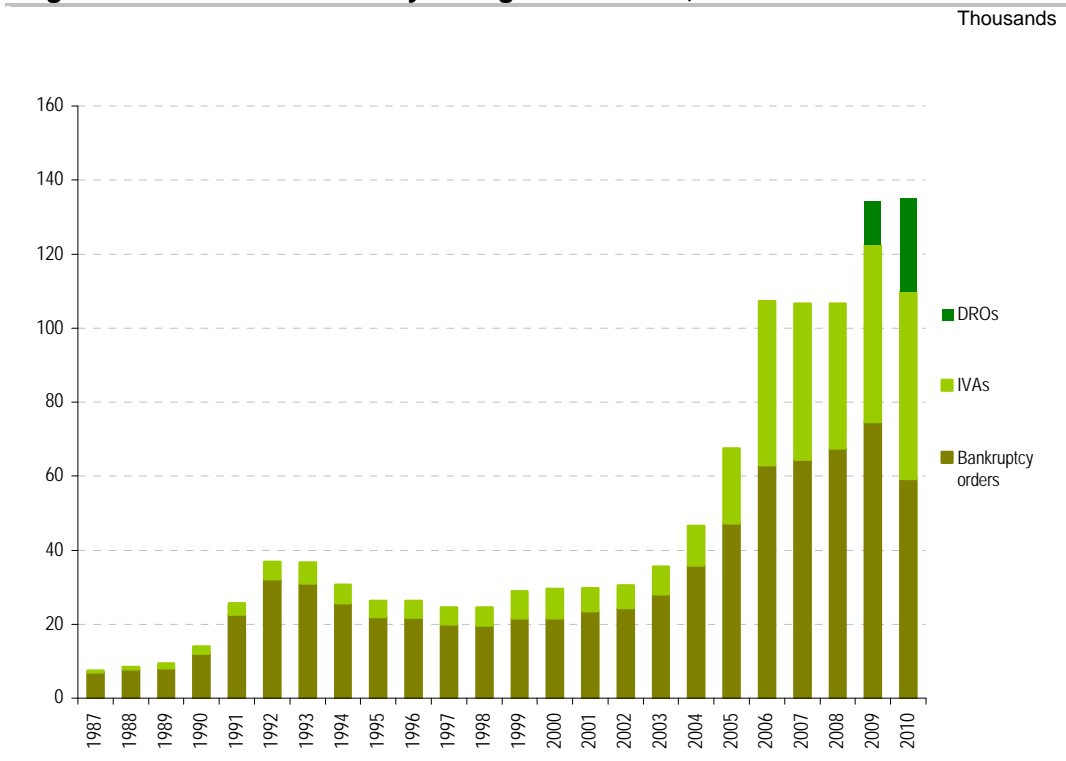
INDIVIDUAL INSOLVENCIES

There were 135,089 individual insolvencies in England and Wales in 2010, an increase of 0.7% from 2009. This included 59,194 bankruptcies (which were down 20.7% on 2009), 50,716 Individual Voluntary Arrangements (IVAs), (which were up 6.5% on 2009) and 25,179 Debt Relief Orders (DROs).

The Debt Relief Order is an individual insolvency procedure which came into force on 6 April 2009 and which provides an alternative route into personal insolvency for certain categories of over-indebted individuals, subject to some restrictions. Additional details are provided under the "Notes to Editors", paragraph 12 and on the Insolvency Service website. Some of those who had a DRO approved would have been declared bankrupt had the DRO route not been an option, but it is not possible to quantify this proportion.

Figure 4 shows how the numbers of insolvencies have changed since 1987 (when the first IVAs were registered).

Figure 4. Individual Insolvency in England & Wales, 1987-2010



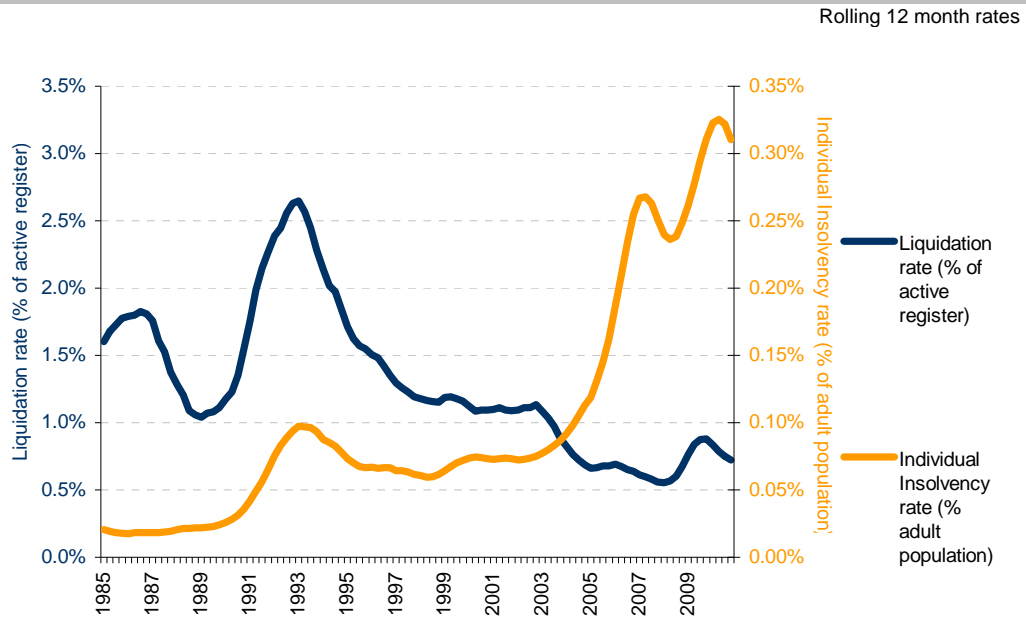
In 2010, 85.6% of bankruptcies were made on the petition of the debtor, comparable to the level in 2009. For bankruptcy orders there has been a pronounced shift towards debtor's petition bankruptcies and away from creditor's petitions in recent years.

COMPANY LIQUIDATION AND INDIVIDUAL INSOLVENCY RATES: LONGER-TERM PERSPECTIVE

In the twelve months ending Q4 2010, approximately 1 in 138 active companies (or 0.7% of all active registered companies) went into liquidation, which is a slight decrease from the previous quarter, when this figure stood at 1 in 133. As Figure 3 shows, the liquidation rate remains low compared to a peak of 2.6% in 1993, and the average of 1.3% seen over the last 25 years. It should be noted that the number of active companies has changed considerably over this period; there were 2.3 million active registered companies in Q4 2010; this compares with only about 900,000 in the early 1990s and less than 800,000 in 1986.

In the twelve months ending Q4 2010, approximately 1 in 323 people became insolvent. This is down from 1 in 311 in the previous quarter. As Figure 5 shows, the individual insolvency rate has displayed a steeply upward path (with some fluctuations) since 2004 and is currently elevated compared to the annual average of 1 in 1800 (0.1%) people seen over the last 25 years.

Figure 5. Company Liquidation and Individual Insolvency Rates in England & Wales



Source: Insolvency Service, Companies House and the Office for National Statistics
 The company liquidation rate is calculated from company liquidations in the latest twelve month period divided by the average number of companies in that period. The individual insolvency rate is calculated from the total number of new bankruptcies, IVAs and DROs in the latest twelve month period divided by the average estimated adult (18+) population of England & Wales.

INSOLVENCIES IN SCOTLAND AND NORTHERN IRELAND

The following tables present recent trends in insolvencies in Scotland and Northern Ireland, complementing those for England and Wales above (longer series back to 2001 are presented in the accompanying detailed tables).

Table IV. Insolvencies in Scotland (not seasonally adjusted)

	2009 Q4	2010 Q1	2010 Q2	2010 Q3	2010 Q4 p	% change – Q4 2010 on
						Q4 2009
Company Liquidations¹	154	275	297	224	245	59.1
of which: Compulsory	106	202	215	154	164	54.7
Creditors' Voluntary ²	48	73	82	70	81	68.8
Individuals^{3,4}	5,693	5,200	5,378 p	5,168 p	4,583	-19.5
of which: Sequestrations ⁴	3,365	3,167	3,139 p	3,092 p	2,493	-25.9
(of which: LILA)	(1,990)	(1,905)	(1,897) p	(1,631) p	(1,368)	(-31.3)
Protected Trust Deeds	2,328	2,033	2,239 p	2,076 p	2,090	-10.2

p = provisional

¹ Source: Companies House

² Including those companies which had previously been in administration or other insolvency procedure

³ Source: Accountant in Bankruptcy (AiB). Latest Release: [AiB Quarterly Statistics - Q3 2010/11](#)

⁴ The sequestration figures include LILA (Low Income, Low Assets) cases. These were introduced as a new route into bankruptcy under the Bankruptcy and Diligence etc (Scotland) Act 2007, wef 1 April 2008.

Table V. Insolvencies in Northern Ireland (not seasonally adjusted)

	2009 Q4	2010 Q1	2010 Q2	2010 Q3	2010 Q4 p	% change – Q4 2010 on
						Q4 2009
Company Liquidations	74	102	116	79	85	14.9
of which: Compulsory ¹	57	49	92	55	54	-5.3
Creditors' Voluntary ²	17	53	24	24	31	82.4
Individuals¹	573	554	636	551	582	1.6
of which: Bankruptcies	381	316	363	290	352	-7.6
IVAs	192	238	273	261	230	19.8

p = provisional

¹ Source: Department for Enterprise, Trade and Investment, Northern Ireland (DETINI)

² Source: Companies House

Notes to Editors

1. The official Insolvency Statistics are the most comprehensive record of the number of corporate and individual insolvencies in England and Wales. Insolvencies in Scotland and Northern Ireland are also included, but are shown separately as they are covered by separate legislation, there are some differences in definition, and policy responsibility for them lies within the devolved administrations.
2. The statistics for England and Wales are derived from administrative records of the department for Business, Innovation and Skills (BIS)' Insolvency Service and Companies House Executive Agencies. For Scotland, the company insolvency statistics are derived from administrative records at Companies House. Figures for individual insolvencies in Scotland are sourced from the Office of the Accountant in Bankruptcy (AiB). The Northern Ireland statistics are derived from administrative records of the DETI Insolvency Service and Companies House. Generally speaking, numbers of cases are based on the date the insolvency procedure was registered on the administrative recording system, not on the date of the order or agreement.
3. Numbers of insolvencies are not directly comparable with official estimates of business stock, formations or closures. Statistics of business start-ups and closures that are directly comparable with each other have been assembled from VAT and PAYE registered unit records and are published by the Office for National Statistics (ONS) in the 'Business Demography' report. The latest figures are those for 2009, and were issued in an ONS statistics bulletin on 1 December 2010. More detailed figures are available via the on-line database NOMIS. Additionally, the 'Small and Medium Enterprise statistics (SME) for the UK and regions' report, published by BIS, estimates the total number of businesses in the United Kingdom at the start of 2009 at 4.8 million.
4. The X12ARIMA program (developed by the US Census Bureau) is used for the seasonal adjustment of the insolvency statistics for England and Wales, this being the recommended program within UK National Statistics. Seasonal adjustment is a process by which changes that are due to seasonal or other calendar influences are removed to produce a clearer picture of the underlying behaviour of the data series. The data series covering Scotland and Northern Ireland do not demonstrate consistent seasonality and only the raw (unadjusted) series are presented.
5. Insolvent companies entering liquidation in England & Wales and Scotland are dealt with under the Insolvency Act of 1986 and, in Northern Ireland, by the Insolvency (Northern Ireland) Order 1989. They can **either** be the subject of a **compulsory liquidation** (winding-up) order obtained from the court by a creditor, shareholder or director **or** themselves pass a resolution, subject to the approval of a creditors' meeting that the company be wound up voluntarily (**creditors voluntary liquidations**, registered at Companies House/Companies Registry). In either case they are said to have been **wound-up**, and numbers are given in Tables 1, 4 and 6. A third type of winding-up, members' voluntary liquidation, is not included because it does not involve insolvency.
6. The Insolvency Act 1986 and, in Northern Ireland, the Insolvency (Northern Ireland) Order 1989 also introduced the procedures of **company administration orders** and **company voluntary arrangements (CVAs)**. The administration procedure gives a period of time during which creditors are restrained from taking action and a court appointed administrator puts forward proposals to deal with the company's financial difficulties. The CVA procedure aids business by enabling a company in financial difficulty to come to a binding agreement with its creditors. These are listed separately under Table 3 for England and Wales and Table 5 for Scotland.
7. The Enterprise Act 2002 introduced revisions to the corporate administration procedures, replacing Part II of the Insolvency Act 1986 with Schedule B1. These include the introduction of additional entry routes into administration that do not require the making of an administration order and a streamlined process for **Administrations** whereby a company can in some circumstances be dissolved without recourse to liquidation. The primary objective of administration (and of CVAs) is the rescue of the company as a going concern. These provisions came into force on 15th September 2003 and **Administrations under the Enterprise Act** have been included on Tables 3 and 5 from Q3 2003 (dissolution follows 3 months after a notice is filed with the Registrar of Companies, if no objections are raised by the court). On 27th March 2006 the Insolvency (Northern Ireland) Order 2005 introduced similar revisions to the corporate administration procedures in Northern Ireland, replacing Part III of the Insolvency (Northern Ireland) Order 1989 with Schedule B1.
8. Since the Enterprise Act 2002, a number of these streamlined administrations have subsequently converted to a creditors' voluntary liquidation. These liquidations in England and Wales are not included under the headline figures here or at Table 1, as they do not represent a new company entering into an

insolvency procedure for the first time. For completeness, however, they are included under Table 3d. It is also possible for the outcome of an administration to be entry into a company voluntary arrangement or a compulsory liquidation, but these cases are not separately identifiable from Companies House' information and will therefore be included within the new case figures for these procedures (the numbers involved are relatively few, compared to those entering CVL). For Scotland and Northern Ireland, figures for creditors' voluntary liquidation *include* those companies which had previously been in administration or other insolvency procedure, as insufficient data are currently available to separate them from the totals, prior to 2010.

9. **Receivership appointments** comprise **administrative receivers** appointed under the 1986 Insolvency Act (and the 1989 Order for Northern Ireland) and certain **other receiver appointments, for example under the Law of Property Act 1925** - due to the use of the same statutory documentation for different types of receivership, it is not possible to give a breakdown between them. Law of Property Act receivers are classed as *Enforcement of Security* and are not insolvency procedures under the Insolvency Act of 1986. For this reason levels of, and trends in, receivership appointments should be interpreted with caution. The provisions of the Enterprise Act 2002 [section 250] (Insolvency [Northern Ireland] Order 2005 [Article 5]) have made some changes to the procedures for administrative receivership.

10. Figures sourced from Companies House (E&W) were revised previously (where appropriate) between 2007 Q1 and 2008 Q1. This reflected inaccuracies identified in the counting of cases during validation following the move to a new IT system in February 2008. The most noticeable revisions were to receiverships (where some companies had been counted more than once); the rest of this series prior to 2007 is not available on a revised basis. However, it should also be noted that because the revised counts have been run against a live database, they do not exactly reflect the original numbers of new cases that would have been reported.

11. Individual insolvencies in England and Wales and in Northern Ireland are made up of **bankruptcy orders** and **individual voluntary arrangements (IVAs)** (though see also paragraph 12 below regarding the introduction of **debt relief orders (DROs)** in England and Wales). Insolvent individuals in England and Wales are dealt with mainly under the Insolvency Act 1986. A bankruptcy order is made on the petition of the debtor or one or more of his creditors when the court is satisfied that there is no prospect of the debt being paid. (Figures for bankruptcy orders include orders relating to the estates of deceased debtors). There are also individual voluntary arrangements (IVAs) and deeds of arrangement (the latter under the Deeds of Arrangement Act 1914), which enable debtors to come to an agreement with their creditors. Table 2 summarises the above procedures for England and Wales (IVAs and Deeds of Arrangement are included under a single column) and Table 2a provides bankruptcy orders further split by petition type. Changes to bankruptcy law in England and Wales introduced by the Enterprise Act 2002 came into force on 1 April 2004 – the Act made no changes to the existing individual voluntary arrangement regime.

12. The Tribunals, Courts and Enforcement Act 2007 introduced a new route into personal insolvency called the debt relief order (DRO), which came into effect from 6 April 2009. DROs provide debt relief, subject to some restrictions, and are suitable for people domiciled in England and Wales who do not own their own home, have little surplus income (no more than £50 a month), assets (other than possibly a car) not exceeding £300, and less than £15,000 of debt. DROs do not involve the courts; they are run by The Insolvency Service in partnership with skilled debt advisers, called approved intermediaries. A DRO lasts for a period of one year before discharge and, as for bankruptcy, there are penalties in place for debtors who seek to abuse the process. Additional information may be found on The Insolvency Service website here: <http://www.insolvency.gov.uk/bankruptcy/alternativestobankruptcy.htm>. Table 2 includes DROs from the second quarter of 2009.

13. The series for bankruptcy orders can not be seasonally adjusted from Q2 2009 onwards due to the introduction (wef 6 April 2009) of debt relief orders (DROs). DROs comprise some of those individuals who would have otherwise been declared bankrupt (a subset of DRO-eligible cases, who were advised of the DRO route and chose to take it) and other individuals who, perhaps, could not have afforded the fee to enter into bankruptcy and who may have otherwise been in an informal debt management process, or been unable to access any form of debt resolution. It is not possible to quantify the impact of the introduction of DROs on the number of bankruptcy orders, nor to adjust the latter for it and, as a result, not possible to compile a consistent seasonally adjusted series for bankruptcy orders. Table 2 therefore only shows bankruptcy orders (and the derived "total individual insolvencies") on a seasonally adjusted basis up to the first quarter of 2009.

14. Table 2b records numbers of Income Payments Orders (IPOs) and Income Payments Agreements (IPAs) where the bankrupt makes regular payments from surplus income towards his/her debts for a period of time, either by court order or by agreement. The figures record numbers of IPOs/IPAs made in each period, they do not, in general, relate to the date of the original bankruptcy order. Table 2b records a number of IPAs before Q2 2004 because the IPA provisions of the Enterprise Act 2002 (commenced on 1 April 2004) were applicable, upon commencement, to pre-commencement bankruptcies.

15. Insolvent individuals in Scotland (Table 4) are subject to **sequestration** (bankruptcy) or **protected trust deeds** under the Bankruptcy (Scotland) Act 1985 (as amended). This Act was amended by the Bankruptcy (Scotland) Act 1993. On April 1 2008 the Bankruptcy and Diligence etc. (Scotland) Act 2007 came into force making significant changes to some aspects of bankruptcy, debt relief and debt enforcement in Scotland. Most notably, as far as these statistics are concerned, it introduced a new route into bankruptcy for people with low income and low assets (LILA). The sequestration figures for Q2 2008 onwards include these new LILA cases; therefore trends in numbers of sequestrations before and after this date should be interpreted with care. Protected trust deeds are voluntary arrangements in Scotland, but although they fulfil much the same role as individual voluntary arrangements, there are important differences in the way they are set up and administered. Details of both sequestrations and protected trust deeds are found on the register of insolvencies, which is maintained by the Accountant in Bankruptcy. Further information about insolvency in Scotland can be found on the Accountant's website at www.aib.gov.uk. It should also be noted that from April 2008, personal insolvency statistics have been extracted from information published on the AiB website (latest release 19 January 2011); whereas previously it was supplied on request, tailored to our publication requirements.

16. Insolvent individuals in Northern Ireland are dealt with under the Insolvency (Northern Ireland) Order 1989 and are recorded under Table 6. On 27 March 2006 the Insolvency (Northern Ireland) Order 2005 came into operation and implemented similar changes to bankruptcy procedures as the Enterprise Act 2002 introduced in England and Wales. Further information about insolvency in Northern Ireland can be found on their website at <http://www.detini.gov.uk/deti-insolvency-index.htm>.

17. Under the Insolvency Act 1986 and the Insolvent Partnerships Order and, in Northern Ireland, the Insolvency (Northern Ireland) Order 1989 and the Insolvent Partnerships Order (Northern Ireland) 1995, insolvent partnerships may be wound up as an unregistered company or administered following bankruptcy orders against the partners. Insolvent Partnerships can also enter administration or a voluntary arrangement.

18. Company insolvencies and bankruptcy orders (relating to the self-employed) in England and Wales broken down by industry are available from Q3 2007 according to the Standard Industrial Classification (SIC) 2003, bringing them into line with other official statistics. Industry breakdowns for compulsory liquidations and bankruptcies (only) are only available one quarter in arrears of the headline series. Figures according to the previously used Insolvency Trade Classification (ITC) are available up to Q3 2006, but information by industry is not available for the period between Q4 2006 to Q2 2007 (inclusive) on either classification. Additionally, the broad split of bankruptcy orders into self-employed and other individuals is available under Table 2a.

19. Company liquidations in Scotland are available from Q1 2007 based on the SIC2003 industry breakdown and these can be found in Tables 4a and 4b. Earlier data are available separately classified according to the Insolvency Trade Classification (ITC).

20. Information concerning insolvency legislation, policy evaluation and research in England and Wales may be obtained from the Insolvency Service website at www.insolvency.gov.uk.

National Statistics

'National Statistics' is the national standard for official statistics. The 'National Statistics' Quality Mark indicates that the statistics have been produced in accordance with a Code of Practice for Official Statistics. The Code of Practice requires the statistics to be produced, managed and disseminated to high professional standards. They must be well-explained and meet users' needs. The 'National Statistics' standard has statutory backing.

More information about the UK Statistics Authority and a range of National Statistics can be found at www.statistics.gov.uk

Press Enquiries

Insolvency Service Press Office

Denise Rawls +44 (0)20 7596 6910

Ade Daramy +44 (0)20 7596 6187

Fax: +44 (0)20 7291 6731

Non Media Enquiries

Policy Directorate : Statistics

Greg Haigh +44 (0)20 7637 6504

Rebekah Paul +44 (0)20 7637 6314

Margaret Sims +44 (0)20 7291 6858

E-Mail:

greg.haigh@insolvency.gsi.gov.uk

rebekah.paul@insolvency.gsi.gov.uk

margaret.sims@insolvency.gsi.gov.uk

Internet:

<http://www.insolvency.gov.uk/otherinformation/statistics/201102/uksa/index.htm>

Out of hours cover

Public Enquiries +44 (0)20 7215 5000

Textphone +44 (0)20 7215 6740

(for those with hearing impairment)



1 ■ Company liquidations¹

England & Wales

Year	Not Seasonally Adjusted			Seasonally Adjusted		
	Total	Compulsory Liquidations	Creditors' Voluntary Liquidations ²	Total	Compulsory Liquidations	Creditors' Voluntary Liquidations ²
2001	14,972	4,675	10,297			
2002	16,306	6,231	10,075			
2003	14,184	5,234	8,950			
2004	12,192	4,584	7,608			
2005	12,893	5,233	7,660			
2006	13,137	5,418	7,719			
2007	12,507	5,165	7,342			
2008	15,535	5,494	10,041			
2009	19,077	5,643	13,434			
p 2010	16,045	4,792	11,253			
2001	Q1 3,943	1,359	2,584	3,767	1,316	2,451
	Q2 3,684	1,348	2,336	3,704	1,267	2,437
	Q3 3,640	940	2,700	3,722	1,021	2,701
	Q4 3,705	1,028	2,677	3,779	1,070	2,708
2002	Q1 4,141	1,408	2,733	3,982	1,364	2,618
	Q2 4,066	1,679	2,387	4,037	1,556	2,481
	Q3 3,808	1,390	2,418	3,930	1,502	2,427
	Q4 4,291	1,754	2,537	4,357	1,808	2,549
2003	Q1 3,797	1,585	2,212	3,689	1,552	2,137
	Q2 3,767	1,470	2,297	3,737	1,378	2,359
	Q3 3,314	1,075	2,239	3,418	1,167	2,250
	Q4 3,306	1,104	2,202	3,341	1,137	2,204
2004	Q1 3,248	1,208	2,040	3,178	1,196	1,982
	Q2 3,108	1,197	1,911	3,069	1,125	1,945
	Q3 2,900	1,061	1,839	2,989	1,129	1,859
	Q4 2,936	1,118	1,818	2,956	1,134	1,822
2005	Q1 3,010	1,101	1,909	2,950	1,097	1,853
	Q2 3,407	1,422	1,985	3,355	1,345	2,010
	Q3 3,306	1,454	1,852	3,397	1,524	1,874
	Q4 3,170	1,256	1,914	3,191	1,267	1,924
2006	Q1 3,564	1,473	2,091	3,505	1,491	2,014
	Q2 3,235	1,263	1,972	3,179	1,199	1,979
	Q3 3,172	1,286	1,886	3,236	1,318	1,918
	Q4 3,166	1,396	1,770	3,217	1,409	1,808
2007	Q1 3,274	1,384	1,890	3,190	1,370	1,820
	Q2 3,191	1,399	1,792	3,168	1,372	1,796
	Q3 3,113	1,234	1,879	3,173	1,268	1,905
	Q4 2,929	1,148	1,781	2,976	1,155	1,821
2008	Q1 3,262	1,080	2,182	3,241	1,151	2,090
	Q2 3,689	1,410	2,279	3,565	1,285	2,280
	Q3 4,059	1,467	2,592	4,125	1,506	2,619
	Q4 4,525	1,537	2,988	4,604	1,551	3,053
2009	Q1 5,110	1,555	3,555	4,964	1,543	3,422
	Q2 5,059	1,520	3,539	5,041	1,480	3,561
	Q3 4,536	1,253	3,283	4,615	1,289	3,326
	Q4 4,372	1,315	3,057	4,457	1,331	3,126
2010	Q1 4,196	1,330	2,866	r 4,051	r 1,295	r 2,757
	Q2 4,094	1,185	2,909	r 4,074	r 1,164	r 2,911
	Q3 3,881	1,082	2,799	r 3,964	r 1,134	r 2,830
	p Q4 3,874	1,195	2,679	3,955	1,200	2,755

Percentage change, latest quarter on previous quarter

2010	Q4	-0.2	10.4	-4.3	-0.2	5.8	-2.6
-------------	----	------	------	------	------	-----	------

Percentage change, latest quarter on corresponding quarter of previous year

2010	Q4	-11.4	-9.1	-12.4	-11.3	-9.9	-11.8
-------------	----	-------	------	-------	-------	------	-------

p Provisional.

r Revised, reflecting routine updates to the seasonally adjusted series.

¹ Including partnerships.

² Where the Creditors' Voluntary Liquidation is the first insolvency procedure entered into (see "Notes to Editors" paragraph 8).

1a. Compulsory liquidations by industry (SIC 2003)^{1,4}
England & Wales

Section	Sub-section 2 digit	3 digit	not seasonally adjusted													
			2007 ²		2008				2009				2010			
			Q3	Q4	Q1	Q2	Q3	Q4	Q1	Q2	Q3	Q4	Q1	Q2	Q3	Q4
Section A		AGRICULTURE, HUNTING AND FORESTRY	7	4	13	5	7	6	11	8	7	4	9	3	5	..
Section B		FISHING	0	3	0	3	4	1	1	1	1	0	0	1	0	..
Section C		MINING AND QUARRYING	2	2	5	2	2	3	2	0	1	2	1	3	2	..
Section D		MANUFACTURING														
	DA	Food products, beverages and tobacco	2	9	2	2	5	7	3	3	1	2	2	4	1	..
	DB	Textiles and textile products	7	9	5	6	3	4	6	8	9	8	7	1	5	..
	DC	Leather and leather products	0	0	0	0	0	0	0	1	0	0	0	0	0	..
	DD	Wood and wood products	3	5	10	7	11	10	6	11	5	7	6	6	6	..
	DE	Pub, paper and paper products publishing and printing	9	8	7	11	8	9	9	4	9	11	11	7	7	..
	DF	Coke, refined petroleum products and nuclear fuel	1	1	0	0	0	0	0	2	1	0	0	0	0	..
	DG	Chemicals, chemical products and man-made fibres	1	1	1	1	3	4	4	0	3	3	1	4	0	..
	DH	Rubber and plastic products	1	6	5	4	3	3	4	6	5	0	7	4	3	..
	DI	Other non-metallic mineral products	6	3	2	6	2	5	9	5	8	3	2	7	4	..
	DJ	Basic metals and fabricated metal products	10	13	14	23	15	14	21	25	12	22	12	15	6	..
	DK	Machinery and equipment not elsewhere classified	5	5	6	5	8	5	4	4	3	2	5	2	3	..
	DL	Electrical and optical equipment	5	8	0	6	4	5	7	3	6	9	8	5	2	..
	DM	Transport equipment	3	4	3	3	1	3	2	4	4	5	1	4	1	..
	DN	Not elsewhere classified	10	8	6	10	6	6	12	7	13	6	9	6	5	..
		Total	63	80	61	84	69	75	87	83	79	78	71	65	43	..
Section E		ELECTRICITY, GAS AND WATER SUPPLY	7	6	9	11	9	14	11	19	9	5	9	2	5	..
Section F	45	CONSTRUCTION														
	451	Site preparation	19	23	23	28	35	29	39	47	35	31	42	18	12	..
	452	Building of complete constructions or parts thereof, civil engineering	81	62	83	91	90	110	122	123	111	99	106	85	49	..
	453	Building installation	44	50	40	63	61	50	77	75	71	65	55	45	36	..
	454	Building completion	55	58	60	75	98	89	100	124	74	98	71	119	66	..
	455	Renting of construction or demolition equipment with operator	3	4	3	6	8	9	5	12	2	7	2	3	3	..
		Total	202	197	209	263	292	295	343	381	293	290	276	270	166	..
Section G		WHOLESALE AND RETAIL TRADE; REPAIR OF MOTOR VEHICLES, MOTOR CYCLES AND PERSONAL AND HOUSEHOLD GOODS														
	50	Sale, maintenance and repair of motor vehicles and motorcycles; retail sale of automotive fuel	20	23	22	17	18	27	20	25	28	23	15	15	8	..
	51	Wholesale trade and commission trade, except of motor vehicles and motorcycles	85	80	83	84	59	108	82	82	73	73	78	58	49	..
	52	Retail trade, except of motor vehicles and motorcycles; repair of personal and household goods	72	69	74	87	83	105	79	88	66	89	81	65	73	..
		Total	178	172	179	191	165	191	208	195	171	185	174	138	130	..
Section H	55	HOTELS AND RESTAURANTS														
	551	Hotels	6	8	7	12	10	11	11	4	9	8	7	7	3	..
	553	Restaurants	42	28	27	29	41	33	43	28	24	29	16	25	20	..
	554	Bars	38	37	38	37	53	42	40	40	27	40	41	38	20	..
		Other	7	4	3	9	6	3	9	11	5	10	4	7	1	..
		Total	93	77	75	87	110	89	97	83	65	87	68	77	44	..
Section I		TRANSPORT, STORAGE AND COMMUNICATION														
	60	Land transport; transport via pipelines	21	35	37	29	31	38	28	39	32	29	24	19	13	..
	61	Water transport	1	3	2	1	1	3	4	1	3	1	2	1	0	..
	62	Air transport	3	0	1	0	3	1	3	2	3	2	5	1	0	..
	63	Supporting and auxiliary transport activities; activities of travel agencies	23	23	25	24	21	35	27	20	22	20	20	16	12	..
	64	Post and telecommunications	36	31	18	38	38	33	24	30	16	33	21	15	16	..
		Total	84	92	83	92	94	110	86	92	76	85	72	52	41	..
Section J		FINANCIAL INTERMEDIATION														
	66	Insurance and pension funding, except compulsory social security	2	3	2	2	5	1	2	4	0	4	2	5	5	..
		Other	30	36	23	26	37	34	46	62	27	35	35	43	19	..
		Total	32	39	25	28	42	35	50	66	27	39	37	48	24	..
Section K		REAL ESTATE, RENTING AND BUSINESS ACTIVITIES														
	70	Real estate activities	41	26	38	56	63	71	71	63	36	50	59	88	31	..
	71	Renting of machinery and equipment without operator and of personal and household goods	2	0	2	0	3	0	2	0	2	2	1	5	1	..
	72	Computer and related activities	11	16	16	24	32	21	20	19	15	24	20	23	12	..
	73	Research and development	1	0	0	0	0	0	1	2	1	0	2	1	0	..
	74	Other business activities	52	60	66	79	98	70	87	76	78	85	89	86	60	..
		Total	107	102	122	159	196	162	181	160	132	161	171	203	104	..
Section L		PUBLIC ADMINISTRATION AND DEFENCE; COMPULSORY SOCIAL SECURITY	4	3	1	3	6	3	2	6	5	0	3	2	3	..
Section M		EDUCATION	16	10	12	14	5	15	15	14	12	14	9	4	7	..
Section N		HEALTH AND SOCIAL WORK	10	17	13	14	14	9	16	17	12	9	11	11	4	..
Section O		OTHER COMMUNITY, SOCIAL & PERSONAL SERVICE ACTIVITIES	108	80	84	82	130	113	108	110	73	86	97	91	60	..
Section P		PRIVATE HOUSEHOLDS EMPLOYING STAFF AND UNDIFFERENTIATED PRODUCTION ACTIVITIES OF HOUSEHOLDS FOR OWN USE	2	0	1	0	1	1	2	0	1	1	1	0	0	..
Section Q		EXTRA-TERRITORIAL ORGANISATIONS AND BODIES	1	4	3	2	0	2	1	3	1	0	3	1	0	..
ALL OTHERS ⁵			355	362	332	436	454	411	378	360	315	343	315	301	362	..
		Total	1,271	1,250	1,227	1,476	1,600	1,535	1,599	1,598	1,280	1,389	1,327	1,272	1,000	..

¹ Not yet available

² The Standard Industrial Classification (SIC 2003) definitions can be found at [http://www.statistics.gov.uk/methods_quality/sic/downloads/UK_SIC_Vol1\(2003\).pdf](http://www.statistics.gov.uk/methods_quality/sic/downloads/UK_SIC_Vol1(2003).pdf)

³ Unknown SIC

⁴ An industry breakdown according to the previously used Insolvency Trade Classifications (ITC) is available up to Q3 2006 at <http://www.insolvency.gov.uk/otherinfomaterials/stats/20030202baab4.htm>. The period from Q4 2006 to Q2 2007 is not available broken down by industry.

⁵ Totals for compulsory liquidations here are not the same as the headline figures under Table 1. This is because the industrial breakdown has been compiled from a specially selected extract from the live database, whereas the headline figures are produced monthly using a different reporting system.

2. Individual insolvencies England & Wales

Year	Not Seasonally Adjusted				Seasonally Adjusted ³		
	Total	Bankruptcy Orders	Debt Relief Orders ¹	Individual Voluntary Arrangements ²	Total	Bankruptcy Orders	Individual Voluntary Arrangements ²
2001	29,775	23,477	:	6,298			
2002	30,587	24,292	:	6,295			
2003	35,604	28,021	:	7,583			
2004	46,651	35,898	:	10,753			
2005	67,584	47,291	:	20,293			
2006	107,288	62,956	:	44,332			
2007	106,645	64,480	:	42,165			
2008	106,544	67,428	:	39,116			
2009	134,142	74,670	11,831	47,641			
p 2010	135,089	59,194	25,179	50,716			
2001	Q1 7,750	6,078	:	1,672	7,496	5,707	1,788
	Q2 7,714	6,115	:	1,599	7,576	5,995	1,581
	Q3 7,434	5,817	:	1,617	7,348	5,808	1,540
	Q4 6,877	5,467	:	1,410	7,356	5,967	1,389
2002	Q1 7,411	6,027	:	1,384	7,511	6,019	1,492
	Q2 7,861	6,269	:	1,592	7,343	5,769	1,575
	Q3 7,892	6,249	:	1,643	7,815	6,246	1,569
	Q4 7,423	5,747	:	1,676	7,918	6,259	1,659
2003	Q1 8,426	6,912	:	1,514	8,145	6,502	1,643
	Q2 8,889	6,948	:	1,941	8,684	6,764	1,920
	Q3 9,291	7,221	:	2,070	9,202	7,223	1,979
	Q4 8,998	6,940	:	2,058	9,573	7,532	2,041
2004	Q1 10,665	8,524	:	2,141	10,330	8,008	2,322
	Q2 11,536	9,060	:	2,476	11,251	8,810	2,441
	Q3 12,227	9,315	:	2,912	12,122	9,342	2,779
	Q4 12,223	8,999	:	3,224	12,948	9,737	3,211
2005	Q1 13,190	10,188	:	3,002	13,424	10,137	3,286
	Q2 16,873	12,338	:	4,535	15,805	11,318	4,487
	Q3 18,010	12,256	:	5,754	17,857	12,330	5,528
	Q4 19,511	12,509	:	7,002	20,498	13,506	6,992
2006	Q1 23,939	16,283	:	7,656	23,623	15,201	8,422
	Q2 26,722	15,489	:	11,233	26,398	15,276	11,122
	Q3 28,083	15,418	:	12,665	27,780	15,641	12,139
	Q4 28,544	15,766	:	12,778	29,487	16,837	12,650
2007	Q1 29,236	17,937	:	11,299	29,203	16,781	12,422
	Q2 27,327	16,489	:	10,838	26,971	16,451	10,520
	Q3 26,252	15,600	:	10,652	25,987	15,908	10,080
	Q4 23,830	14,454	:	9,376	24,483	15,340	9,143
2008	Q1 24,619	15,814	:	8,805	25,131	15,452	9,679
	Q2 25,966	16,373	:	9,593	24,934	15,568	9,366
	Q3 27,488	17,237	:	10,251	27,227	17,447	9,780
	Q4 28,471	18,004	:	10,467	29,252	18,961	10,291
2009	Q1 30,253	20,446	:	9,807	29,887	19,062	10,826
	Q2 33,073	18,870	1,978	12,225	:	:	11,977
	Q3 35,242	18,347	4,505	12,390	:	:	11,848
	Q4 35,574	17,007	5,348	13,219	:	:	12,990
2010	Q1 35,682	18,256	5,644	11,782	:	:	r 12,896
	Q2 34,743	14,982	6,295	13,466	:	:	r 13,059
	Q3 33,935	13,907	7,068	12,960	:	:	r 12,504
	p Q4 30,729	12,049	6,172	12,508	:	:	12,258

Percentage change, latest quarter on previous quarter

2010	Q4	-9.4	-13.4	-12.7	-3.5	:	:	-2.0
-------------	----	------	-------	-------	------	---	---	------

Percentage change, latest quarter on corresponding quarter of previous year

2010	Q4	-13.6	-29.2	15.4	-5.4	:	:	-5.6
-------------	----	-------	-------	------	------	---	---	------

p Provisional.

: Not applicable

r Revised, reflecting routine updates to the seasonally adjusted series.

¹ Debt Relief Orders (DROs) came into effect on 6 April 2009 as an alternative route into personal insolvency. See "Notes to Editors" paragraph 12.

² Including Deeds of Arrangement

³ The series for bankruptcy orders is only seasonally adjusted up to Q1 2009; see "Notes to Editors" paragraph 13.

2a. Bankruptcy orders by petition type and trading status

England & Wales

not seasonally adjusted

Year	Bankruptcy Orders	Debtor's petitions		Creditor's petitions		Bankruptcy Orders	Self-employed ¹		Other individuals ¹		
		count	%	count	%		count	%	count	%	
2001	23,477	15,514	66.1	7,963	33.9	23,477	9,839	41.9	13,638	58.1	
2002	24,292	16,955	69.8	7,337	30.2	24,292	8,854	36.4	15,438	63.6	
2003	28,021	19,882	71.0	8,139	29.0	28,021	9,139	32.6	18,882	67.4	
2004	35,898	27,872	77.6	8,026	22.4	35,898	9,564	26.6	26,334	73.4	
2005	47,291	38,131	80.6	9,160	19.4	47,291	10,839	22.9	36,452	77.1	
2006	62,956	53,038	84.2	9,918	15.8	62,956	10,894	17.3	52,062	82.7	
2007	64,480	54,433	84.4	10,047	15.6	64,480	7,058	10.9	57,422	89.1	
2008	67,428	56,600	83.9	10,828	16.1	67,428	8,183	12.1	59,245	87.9	
2009	74,670	63,804	85.4	10,866	14.6	74,670	9,753	13.1	64,917	86.9	
p 2010	59,194	50,652	85.6	8,542	14.4	59,194	
2001	Q1	6,078	3,987	65.6	2,091	34.4	6,078	2,666	43.9	3,412	56.1
	Q2	6,115	3,890	63.6	2,225	36.4	6,115	2,609	42.7	3,506	57.3
	Q3	5,817	3,889	66.9	1,928	33.1	5,817	2,414	41.5	3,403	58.5
	Q4	5,467	3,748	68.6	1,719	31.4	5,467	2,150	39.3	3,317	60.7
2002	Q1	6,027	4,223	70.1	1,804	29.9	6,027	2,261	37.5	3,766	62.5
	Q2	6,269	4,333	69.1	1,936	30.9	6,269	2,235	35.7	4,034	64.3
	Q3	6,249	4,374	70.0	1,875	30.0	6,249	2,244	35.9	4,005	64.1
	Q4	5,747	4,025	70.0	1,722	30.0	5,747	2,114	36.8	3,633	63.2
2003	Q1	6,912	4,892	70.8	2,020	29.2	6,912	2,468	35.7	4,444	64.3
	Q2	6,948	4,851	69.8	2,097	30.2	6,948	2,267	32.6	4,681	67.4
	Q3	7,221	5,148	71.3	2,073	28.7	7,221	2,296	31.8	4,925	68.2
	Q4	6,940	4,991	71.9	1,949	28.1	6,940	2,108	30.4	4,832	69.6
2004	Q1	8,524	6,472	75.9	2,052	24.1	8,524	2,437	28.6	6,087	71.4
	Q2	9,060	7,028	77.6	2,032	22.4	9,060	2,455	27.1	6,605	72.9
	Q3	9,315	7,236	77.7	2,079	22.3	9,315	2,300	24.7	7,015	75.3
	Q4	8,999	7,136	79.3	1,863	20.7	8,999	2,372	26.4	6,627	73.6
2005	Q1	10,188	8,219	80.7	1,969	19.3	10,188	2,446	24.0	7,742	76.0
	Q2	12,338	9,840	79.8	2,498	20.2	12,338	2,835	23.0	9,503	77.0
	Q3	12,256	9,902	80.8	2,354	19.2	12,256	2,850	23.3	9,406	76.7
	Q4	12,509	10,170	81.3	2,339	18.7	12,509	2,708	21.6	9,801	78.4
2006	Q1	16,283	13,492	82.9	2,791	17.1	16,283	3,150	19.3	13,133	80.7
	Q2	15,489	13,086	84.5	2,403	15.5	15,489	2,898	18.7	12,591	81.3
	Q3	15,418	13,036	84.6	2,382	15.4	15,418	2,990	19.4	12,428	80.6
	Q4	15,766	13,424	85.1	2,342	14.9	15,766	1,856	11.8	13,910	88.2
2007	Q1	17,937	15,356	85.6	2,581	14.4	17,937	1,981	11.0	15,956	89.0
	Q2	16,489	13,923	84.4	2,566	15.6	16,489	1,767	10.7	14,722	89.3
	Q3	15,600	13,173	84.4	2,427	15.6	15,600	1,660	10.6	13,940	89.4
	Q4	14,454	11,981	82.9	2,473	17.1	14,454	1,650	11.4	12,804	88.6
2008	Q1	15,814	13,275	83.9	2,539	16.1	15,814	1,915	12.1	13,899	87.9
	Q2	16,373	13,754	84.0	2,619	16.0	16,373	1,828	11.2	14,545	88.8
	Q3	17,237	14,369	83.4	2,868	16.6	17,237	2,115	12.3	15,122	87.7
	Q4	18,004	15,202	84.4	2,802	15.6	18,004	2,325	12.9	15,679	87.1
2009	Q1	20,446	17,606	86.1	2,840	13.9	20,446	2,798	13.7	17,648	86.3
	Q2	18,870	16,265	86.2	2,605	13.8	18,870	2,470	13.1	16,400	86.9
	Q3	18,347	15,616	85.1	2,731	14.9	18,347	2,280	12.4	16,067	87.6
	Q4	17,007	14,317	84.2	2,690	15.8	17,007	2,205	13.0	14,802	87.0
2010	Q1	18,256	15,783	86.5	2,473	13.5	18,256	2,321	12.7	15,935	87.3
	Q2	14,982	12,844	85.7	2,138	14.3	14,982	1,911	12.8	13,071	87.2
	Q3	13,907	11,734	84.4	2,173	15.6	13,907	1,650	11.9	12,257	88.1
	p Q4	12,049	10,291	85.4	1,758	14.6	12,049

p Provisional.

.. Not yet available

¹ Changes have been made to the part of the database used to capture information on trading status and industry codes. From 2006 Q4, "self-employed" includes the categories "self-employed"; "trader but failure not as a result of trading" and "trading partnership" and "other individuals" includes "non-trading"; "non-surrender" and "unknown". The breakdown by trading status from Q4 2006 should not therefore be considered to be entirely consistent with that for the earlier period.

2b. Income payments¹ England & Wales

not seasonally adjusted

Year	Total	Income Payments Orders	Income Payments Agreements
2001	2,396	2,396	:
2002	2,322	2,322	:
2003	2,812	2,720	92
2004	6,238	1,238	5,000
2005	9,102	69	9,033
2006	11,990	86	11,904
2007	13,332	77	13,255
2008	13,265	67	13,198
2009	15,401	64	15,337
p 2010²	13,741
2001			
Q1	565	565	:
Q2	458	458	:
Q3	710	710	:
Q4	663	663	:
2002			
Q1	565	565	:
Q2	458	458	:
Q3	630	630	:
Q4	669	669	:
2003			
Q1	464	462	2
Q2	444	432	12
Q3	917	885	32
Q4	987	941	46
2004			
Q1	783	709	74
Q2	1,257	413	844
Q3	2,140	90	2,050
Q4	2,058	26	2,032
2005			
Q1	1,430	25	1,405
Q2	1,882	11	1,871
Q3	2,900	12	2,888
Q4	2,890	21	2,869
2006			
Q1	1,973	29	1,944
Q2	2,532	21	2,511
Q3	3,798	20	3,778
Q4	3,687	16	3,671
2007			
Q1	2,483	23	2,460
Q2	2,895	27	2,868
Q3	4,244	11	4,233
Q4	3,710	16	3,694
2008			
Q1	2,169	18	2,151
Q2	2,656	12	2,644
Q3	3,923	15	3,908
Q4	4,517	22	4,495
2009			
Q1	2,351	19	2,332
Q2	3,121	13	3,108
Q3	4,989	21	4,968
Q4	4,940	11	4,929
2010			
Q1	2,750	14	2,736
Q2	3,046	14	3,032
p Q3	4,433	12	4,421
p Q4 ²	3,500

p Provisional

r Revised, reflecting routine annual updates.

: Not applicable

.. Not yet available

¹ See "Notes to Editors" paragraph 14.

² This figure is an estimate which will be revised next quarter.

2c. Trading-related bankruptcies by industry (SIC 2003)^{1,4} England & Wales

not seasonally adjusted

Section	Sub-section 2 digit 3 digit		2007 ³		2008				2009				2010			
			Q3	Q4	Q1	Q2	Q3	Q4	Q1	Q2	Q3	Q4	Q1	Q2	Q3	Q4
Section A		AGRICULTURE, HUNTING AND FORESTRY	43	35	31	39	33	44	59	57	47	35	38	42	41	..
Section B		FISHING	3	5	4	2	7	4	9	5	2	5	3	3	1	..
Section C		MINING AND QUARRYING	0	5	1	0	1	0	1	1	2	1	3	0	1	..
Section D		MANUFACTURING														
	DA	Food products, beverages and tobacco	0	0	2	1	1	2	4	3	2	0	1	5	1	..
	DB	Textiles and textile products	2	7	7	6	5	8	2	7	0	8	6	5	8	..
	DC	Leather and leather products	0	0	0	0	0	0	0	0	1	0	0	0	0	..
	DD	Wood and wood products	3	8	12	8	15	10	16	8	10	10	9	14	6	..
	DE	Pulp, paper and paper products publishing and printing	4	5	5	4	5	11	7	8	8	10	9	6	7	..
	DF	Coke, refined petroleum products and nuclear fuel	0	0	1	0	1	0	0	0	0	0	0	0	0	..
	DG	Chemicals, chemical products and man-made fibres	1	0	0	0	1	0	0	0	3	1	0	2	0	..
	DH	Rubber and plastic products	2	1	1	1	2	1	0	1	2	0	4	2	1	..
	DI	Other non-metallic mineral products	3	6	0	2	3	1	8	4	1	2	4	2	0	..
	DJ	Basic metals and fabricated metal products	7	2	8	4	10	5	10	14	7	14	11	7	9	..
	DK	Machinery and equipment not elsewhere classified	3	3	1	2	2	2	2	1	3	1	1	0	2	..
	DL	Electrical and optical equipment	1	1	0	1	3	2	1	3	2	2	1	2	0	..
	DM	Transport equipment	0	1	4	2	0	2	2	6	4	3	1	2	2	..
	DN	Not elsewhere classified	7	6	9	4	5	3	13	8	4	4	7	6	3	..
		Total	33	40	50	35	53	47	65	63	47	55	54	53	39	..
Section E		ELECTRICITY, GAS AND WATER SUPPLY	29	16	36	21	28	19	39	40	42	28	53	28	27	..
Section F	45	CONSTRUCTION														
	451	Site preparation	58	51	58	65	66	61	97	71	78	72	57	64	46	..
	452	Building of complete constructions or parts thereof; civil engineering	73	72	99	80	76	100	136	108	98	118	102	69	75	..
	453	Building installation	111	96	120	106	110	113	156	156	146	122	143	95	94	..
	454	Building completion	133	157	189	178	203	241	315	309	289	252	266	221	181	..
	455	Renting of construction or demolition equipment with operator	4	2	4	0	1	10	0	5	4	5	2	3	2	..
		Total	379	378	470	429	456	525	704	649	615	569	571	451	398	..
Section G		WHOLESALE AND RETAIL TRADE; REPAIR OF MOTOR VEHICLES, MOTOR CYCLES AND PERSONAL AND HOUSEHOLD GOODS														
	50	Sale, maintenance and repair of motor vehicles and motorcycles; retail sale of automotive fuel	43	57	52	45	57	67	71	46	68	66	51	47	36	..
	51	Wholesale trade and commission trade, except of motor vehicles and motorcycles	48	56	59	65	77	63	71	65	74	72	64	62	35	..
	52	Retail trade, except of motor vehicles and motorcycles; repair of personal and household goods	204	180	215	194	241	264	319	259	216	210	202	173	188	..
		Total	295	293	326	304	375	394	461	370	358	348	317	282	259	..
Section H	55	HOTELS AND RESTAURANTS														
	551	Hotels	7	11	14	6	15	14	16	17	11	11	18	20	12	..
	553	Restaurants	39	36	38	40	45	51	73	63	48	49	53	48	31	..
	554	Bars	96	124	139	167	159	192	160	120	132	131	163	134	99	..
		Other	21	16	17	19	32	32	24	40	22	19	31	22	15	..
		Total	163	187	208	232	251	289	273	240	213	210	265	224	157	..
Section I		TRANSPORT, STORAGE AND COMMUNICATION														
	60	Land transport; transport via pipelines	155	135	179	166	201	204	260	210	163	183	178	129	131	..
	61	Water transport	0	1	1	3	0	0	1	1	1	1	1	2	1	..
	62	Air transport	0	2	0	1	0	0	2	2	1	1	1	2	0	..
	63	Supporting and auxiliary transport activities; activities of travel agencies	44	43	52	52	56	74	58	67	61	47	49	53	37	..
	64	Post and telecommunications	30	32	47	42	61	39	56	50	49	51	58	51	37	..
		Total	229	213	279	264	319	317	377	330	275	283	287	237	206	..
Section J		FINANCIAL INTERMEDIATION														
	66	Insurance and pension funding, except compulsory social security	3	0	0	0	4	2	0	5	2	4	5	3	4	..
		Other	29	37	26	36	34	40	53	49	49	42	49	33	38	..
		Total	32	37	26	36	38	42	53	54	51	46	54	36	42	..
Section K		REAL ESTATE, RENTING AND BUSINESS ACTIVITIES														
	70	Real estate activities	19	11	17	30	47	61	61	50	49	57	38	38	32	..
	71	Renting of machinery and equipment without operator and of personal and household goods	4	0	1	2	1	1	2	1	0	1	1	1	2	..
	72	Computer and related activities	9	8	7	6	10	13	10	12	8	8	13	4	6	..
	73	Research and development	0	0	0	0	0	0	0	0	0	1	0	0	1	..
	74	Other business activities	45	46	64	42	77	81	67	80	67	54	99	60	69	..
		Total	77	65	89	80	135	156	140	143	124	121	151	103	110	..
Section L		PUBLIC ADMINISTRATION AND DEFENCE; COMPULSORY SOCIAL SECURITY	3	2	2	3	4	6	7	3	6	9	2	9	3	..
Section M		EDUCATION	20	17	25	14	24	24	31	31	23	25	26	25	19	..
Section N		HEALTH AND SOCIAL WORK	30	47	34	41	39	50	64	55	56	46	36	31	33	..
Section O		OTHER COMMUNITY, SOCIAL & PERSONAL SERVICE ACTIVITIES	283	283	309	302	326	372	474	407	398	394	435	365	301	..
Section P		PRIVATE HOUSEHOLDS EMPLOYING STAFF AND UNDIFFERENTIATED PRODUCTION ACTIVITIES OF HOUSEHOLDS FOR OWN USE	2	6	3	5	3	6	11	4	3	4	1	3	3	..
Section Q		EXTRA-TERRITORIAL ORGANISATIONS AND BODIES	0	3	2	0	3	1	0	4	1	1	0	1	3	..
ALL OTHER ²			21	10	21	19	17	29	30	14	17	25	25	18	7	..
Total			1,642	1,642	1,916	1,826	2,112	2,325	2,798	2,470	2,280	2,205	2,321	1,911	1,650	..

.. Not yet available

¹ The Standard Industrial Classification (SIC 2003) definitions can be found at [http://www.statistics.gov.uk/methods_quality/sic/downloads/UK_SIC_Vol1\(2003\).pdf](http://www.statistics.gov.uk/methods_quality/sic/downloads/UK_SIC_Vol1(2003).pdf)

² Unknown SIC

³ An industry breakdown according to the previously used Insolvency Trade Classifications (ITC) is available up to Q3 2006 at <http://www.insolvency.gov.uk/otherinformation/statistics/200702tables.htm>. The period from Q4 2006 to Q2 2007 is not available broken down by industry.

⁴ Totals for trading-related bankruptcies here are not entirely consistent with the figures under Table 2a. This is because the industrial breakdown has been compiled from a specially selected extract from the live database, whereas the headline figures are produced monthly using a different reporting system.

3. Receiverships, Administrations and Company Voluntary Arrangements¹ England & Wales

not seasonally adjusted

Year	Receivership Appointments ²	Administrator Appointments ³	In Administration (Enterprise Act 2002) ³	Company Voluntary Arrangements
2001	1,914	698	:	597
2002	1,541	643	:	651
2003	1,261	497	247	726
2004	864	1	1,601	597
2005	590	4	2,257	604
2006	588	0	3,560 ⁴	534
2007	337	3	2,509	418
2008	867	2	4,820 ⁵	587
2009	1,468	0	4,161	726
p 2010	1,309	4	2,831	765
2001				
Q1	649	125	:	132
Q2	435	141	:	163
Q3	369	146	:	141
Q4	461	286	:	161
2002				
Q1	455	176	:	151
Q2	346	151	:	151
Q3	377	162	:	181
Q4	363	154	:	168
2003				
Q1	315	160	:	178
Q2	298	167	:	165
Q3	334	154	14	171
Q4	314	16	233	212
2004				
Q1	224	1	331	176
Q2	199	0	392	154
Q3	203	0	421	137
Q4	238	0	457	130
2005				
Q1	114	0	489	179
Q2	167	4	568	183
Q3	170	0	620	130
Q4	139	0	580	112
2006				
Q1	180	0	753	124
Q2	153	0	653	147
Q3	93	0	675	157
Q4	162	0	1,479 ⁴	106
2007				
Q1	88	1	683	96
Q2	77	0	585	102
Q3	80	2	666	129
Q4	92	0	575	91
2008				
Q1	159	1	858	140
Q2	177	0	938	131
Q3	270	1	1,006	167
Q4	261	0	2,018 ⁵	149
2009				
Q1	316	0	1,311	156
Q2	345	0	1,027	157
Q3	410	0	974	194
Q4	397	0	849	219
2010				
Q1	356	4	779	204
Q2	302	0	777	232
Q3	349	0	633	159
p Q4	302	0	642	170

Percentage change, latest quarter on corresponding quarter of previous year

2010	Q4	-23.9	:	-24.4	-22.4
-------------	----	-------	---	-------	-------

p Provisional
: Not applicable

¹ Registered at Companies House

² Includes Law of Property Act receiverships (see "Notes to Editors" Paragraph 9). Receivership figures between Q1 2007 and Q1 2008 were previously revised to remove duplication, and are not consistent with those for the earlier period; see "Notes to Editors" paragraph 10.

³ See paragraph 7 of the Press Release "Notes to Editors" for changes wef 15 September 2003 under the Enterprise Act 2002

⁴ The figure for Q4 2006 includes 844 separate, limited companies created and managed by "Safe Solutions Accountancy Limited" for which Grant Thornton was appointed administrator.

⁵ The figure for Q4 2008 includes 729 separate managed service companies for which BDO Stoy Hayward was appointed administrator. The administrations were approved in September 2008, but the statistics are counted based on the date registered at Companies House (which fell in October 2008, i.e. Q4).

3a. Receiverships by industry (SIC 2003)¹ England & Wales

not seasonally adjusted

Section	Sub-section 2 digit 3 digit	2007		2008				2009				2010			
		Q3	Q4	Q1	Q2	Q3	Q4	Q1	Q2	Q3	Q4	Q1	Q2	Q3	Q4 p
Section A	AGRICULTURE, HUNTING AND FORESTRY	2	0	1	0	0	1	1	0	1	0	0	0	0	0
Section B	FISHING	0	0	0	0	0	0	0	0	0	0	0	0	0	
Section C	MINING AND QUARRYING	0	1	0	0	0	0	1	0	0	0	0	0	0	
Section D	MANUFACTURING														
DA	Food products, beverages and tobacco	0	1	1	0	1	1	1	0	0	0	0	1	0	
DB	Textiles and textile products	1	0	1	0	1	0	1	0	1	0	1	0	0	
DC	Leather and leather products	0	0	0	0	0	0	0	0	0	0	0	0	1	
DD	Wood and wood products	0	0	0	1	0	1	0	0	0	0	1	1	0	
DE	Pulp, paper and paper products publishing and printing	0	1	1	2	2	1	0	3	2	0	2	2	1	
DF	Coke, refined petroleum products and nuclear fuel	0	0	0	0	0	0	0	0	0	0	0	0	0	
DG	Chemicals, chemical products and man-made fibres	0	0	0	1	1	0	0	1	0	0	0	0	0	
DH	Rubber and plastic products	0	2	0	1	0	0	0	0	1	0	1	1	1	
DI	Other non-metallic mineral products	0	0	0	0	0	1	0	0	1	0	1	0	4	
DJ	Basic metals and fabricated metal products	0	2	2	1	1	3	4	2	8	1	4	1	4	
DK	Machinery and equipment not elsewhere classified	1	2	3	0	0	0	1	0	2	0	0	0	0	
DL	Electrical and optical equipment	1	0	0	1	0	0	0	0	2	1	1	0	1	
DM	Transport equipment	1	1	0	0	0	0	0	0	0	0	0	0	1	
DN	Not elsewhere classified	5	2	0	3	0	2	1	1	2	0	4	0	2	
	Total	9	11	8	10	6	9	8	7	19	2	15	6	11	
Section E	ELECTRICITY, GAS AND WATER SUPPLY	0	0	0	0	0	2	0	0	0	0	0	0	0	
Section F	45 CONSTRUCTION														
451	Site preparation	0	0	0	0	1	1	0	1	0	1	1	0	0	
452	Building of complete constructions or parts thereof; civil engineering	7	5	14	17	23	39	36	44	59	57	33	37	30	
453	Building installation	0	0	2	1	1	0	1	2	3	3	7	6	3	
454	Building completion	0	2	4	4	4	4	10	9	7	11	7	6	8	
455	Renting of construction or demolition equipment with operator	0	0	0	0	0	0	1	0	0	0	1	0	0	
	Total	7	7	20	22	29	44	48	56	69	72	49	49	48	
Section G	WHOLESALE AND RETAIL TRADE; REPAIR OF MOTOR VEHICLES, MOTOR CYCLES AND PERSONAL AND HOUSEHOLD GOODS														
50	Sale, maintenance and repair of motor vehicles and motorcycles; retail sale of automotive fuel	3	0	2	5	7	8	8	5	5	2	0	1	5	
51	Wholesale trade and commission trade, except of motor vehicles and motorcycles	1	1	4	3	5	5	2	6	9	8	7	4	2	
52	Retail trade, except of motor vehicles and motorcycles; repair of personal and household goods	0	2	1	2	0	2	3	5	6	6	2	3	5	
	Total	4	3	7	10	12	15	13	16	20	16	9	8	12	
Section H	55 HOTELS AND RESTAURANTS														
551	Hotels	2	1	3	2	0	0	6	5	1	6	7	3	3	
553	Restaurants	6	0	2	2	0	1	5	7	1	0	3	1	0	
554	Bars	3	0	0	2	2	3	2	3	2	4	6	3	5	
	Other	0	0	0	0	2	1	0	3	1	1	1	0	1	
	Total	11	1	5	6	4	5	13	18	5	11	17	7	9	
Section I	TRANSPORT, STORAGE AND COMMUNICATION														
60	Land transport; transport via pipelines	0	0	1	0	0	0	0	1	1	3	1	2	1	
61	Water transport	0	0	0	0	0	0	0	0	0	0	0	0	0	
62	Air transport	0	1	0	0	0	0	0	0	0	4	0	0	1	
63	Supporting and auxiliary transport activities; activities of travel agencies	0	0	1	1	0	0	0	0	2	1	2	1	1	
64	Post and telecommunications	0	1	0	2	0	1	0	0	0	0	1	0	0	
	Total	0	2	2	3	0	1	0	1	3	8	4	3	2	
Section J	FINANCIAL INTERMEDIATION														
66	Insurance and pension funding, except compulsory social security	0	1	0	0	1	0	0	0	2	1	0	0	0	
	Other	0	1	3	5	4	4	2	3	5	3	3	3	1	
	Total	0	2	3	5	5	4	2	3	7	4	3	3	1	
Section K	REAL ESTATE, RENTING AND BUSINESS ACTIVITIES														
70	Real estate activities	23	36	76	74	151	129	172	163	209	192	178	146	193	
71	Renting of machinery and equipment without operator and of personal and household goods	1	1	0	0	1	0	1	0	0	0	0	0	1	
72	Computer and related activities	0	1	2	3	1	2	0	3	1	2	1	0	2	
73	Research and development	0	0	0	0	0	0	0	0	0	0	0	0	0	
74	Other business activities	14	15	19	19	26	28	26	42	31	38	42	37	30	
	Total	38	53	97	96	179	159	199	208	241	232	221	183	225	
Section L	PUBLIC ADMINISTRATION AND DEFENCE; COMPULSORY SOCIAL SECURITY	0	0	0	0	0	0	0	0	0	0	0	0	0	
Section M	EDUCATION	1	0	0	0	1	0	0	1	0	2	0	0	0	
Section N	HEALTH AND SOCIAL WORK	0	1	0	1	0	1	1	1	6	1	1	4	0	
Section O	OTHER COMMUNITY, SOCIAL & PERSONAL SERVICE ACTIVITIES	2	2	10	8	10	9	9	9	8	12	10	9	16	
Section P	PRIVATE HOUSEHOLDS EMPLOYING STAFF AND UNDIFFERENTIATED PRODUCTION ACTIVITIES OF HOUSEHOLDS FOR OWN USE	0	0	0	0	0	0	0	0	0	0	0	0	0	
Section Q	EXTRA-TERRITORIAL ORGANISATIONS AND BODIES	0	0	0	0	0	0	0	0	0	0	0	0	0	
ALL OTHER ²		6	9	6	16	24	11	21	25	31	37	27	30	25	
Total		80	92	159	177	270	261	316	345	410	397	356	302	349	

p Provisional.

¹ The Standard Industrial Classification (SIC 2003) definitions can be found at [http://www.statistics.gov.uk/methods_quality/sic/downloads/UK_SIC_Vol1\(2003\).pdf](http://www.statistics.gov.uk/methods_quality/sic/downloads/UK_SIC_Vol1(2003).pdf)

² Including unknown or invalid SIC codes and non-trading or dormant companies

3b. Administrations (Enterprise Act) by industry (SIC 2003) ¹

England & Wales

not seasonally adjusted

Section	Sub-section 2 digit 3 digit	2007		2008				2009				2010			
		Q3	Q4	Q1	Q2	Q3	Q4 ²	Q1	Q2	Q3	Q4	Q1	Q2	Q3	Q4 p
Section A		AGRICULTURE, HUNTING AND FORESTRY													
		8	3	4	5	4	5	4	3	2	1	2	4	1	4
Section B		FISHING													
		0	0	0	2	0	1	0	1	0	2	0	0	0	0
Section C		MINING AND QUARRYING													
		0	2	1	0	1	2	3	1	2	4	0	1	0	2
Section D		MANUFACTURING													
DA		Food products, beverages and tobacco													
		14	5	8	13	10	15	17	7	7	16	17	12	6	5
DB		Textiles and textile products													
		6	5	7	9	9	11	8	13	15	4	11	7	3	2
DC		Leather and leather products													
		1	0	0	2	1	1	1	1	1	0	0	4	1	0
DD		Wood and wood products													
		5	6	7	5	11	10	13	6	7	4	3	9	3	5
DE		Pulp, paper and paper products publishing and printing													
		28	20	41	27	33	28	51	37	27	25	42	26	24	14
DF		Coke, refined petroleum products and nuclear fuel													
		0	0	0	0	1	2	2	0	0	0	0	0	0	0
DG		Chemicals, chemical products and man-made fibres													
		9	3	1	3	5	6	6	5	4	3	1	3	2	1
DH		Rubber and plastic products													
		6	6	14	10	9	12	20	12	10	6	12	2	4	3
DI		Other non-metallic mineral products													
		1	5	3	4	2	7	9	6	3	5	3	3	1	5
DJ		Basic metals and fabricated metal products													
		21	22	30	38	28	52	64	51	46	31	29	33	21	20
DK		Machinery and equipment not elsewhere classified													
		4	8	10	5	8	11	10	5	10	10	6	5	3	6
DL		Electrical and optical equipment													
		13	5	13	12	9	7	4	11	19	10	11	4	5	5
DM		Transport equipment													
		11	12	4	2	9	9	9	12	4	5	5	3	4	1
DN		Not elsewhere classified													
		16	22	34	27	28	30	43	24	22	20	31	17	19	15
	Total	135	119	172	157	163	201	257	190	175	139	171	128	96	82
Section E		ELECTRICITY, GAS AND WATER SUPPLY													
		2	0	0	1	0	2	0	0	0	1	1	0	1	1
Section F	45	CONSTRUCTION													
451		Site preparation													
		1	3	0	2	2	6	3	2	3	3	4	0	3	1
452		Building of complete constructions or parts thereof; civil engineering													
		42	41	59	48	72	98	70	74	62	53	46	49	33	55
453		Building installation													
		20	13	26	27	15	33	23	20	24	18	24	19	19	16
454		Building completion													
		13	11	17	20	15	16	20	10	15	15	9	14	12	9
455		Renting of construction or demolition equipment with operator													
		1	3	7	2	0	3	4	5	2	1	4	4	1	1
	Total	77	71	109	99	104	156	120	111	106	90	87	86	68	82
Section G		WHOLESALE AND RETAIL TRADE; REPAIR OF MOTOR VEHICLES, MOTOR CYCLES AND PERSONAL AND HOUSEHOLD GOODS													
50		Sale, maintenance and repair of motor vehicles and motorcycles; retail sale of automotive fuel													
		16	10	13	19	21	41	30	22	15	20	9	12	9	22
51		Wholesale trade and commission trade, except of motor vehicles and motorcycles													
		48	36	66	66	48	101	93	68	63	60	57	44	43	32
52		Retail trade, except of motor vehicles and motorcycles; repair of personal and household goods													
		41	25	52	66	53	75	111	49	41	35	32	33	28	26
	Total	105	71	131	151	122	217	234	139	119	115	98	89	80	80
Section H	55	HOTELS AND RESTAURANTS													
551		Hotels													
		0	4	8	5	2	11	31	12	11	14	6	22	11	12
553		Restaurants													
		21	16	27	22	33	26	36	23	28	23	12	10	15	19
554		Bars													
		5	4	5	9	17	13	7	13	8	20	13	11	8	10
	Other	4	2	1	6	4	3	7	2	2	3	0	7	4	6
	Total	30	26	41	42	56	53	81	50	49	60	31	50	38	47
Section I		TRANSPORT, STORAGE AND COMMUNICATION													
60		Land transport; transport via pipelines													
		17	12	14	23	25	25	29	13	21	16	13	28	19	9
61		Water transport													
		0	0	0	1	0	3	4	3	0	0	0	0	0	0
62		Air transport													
		0	1	0	4	2	2	1	2	2	1	2	1	1	0
63		Supporting and auxiliary transport activities; activities of travel agencies													
		9	6	12	8	27	12	14	8	10	16	9	5	7	3
64		Post and telecommunications													
		10	6	4	10	11	12	8	6	16	5	6	10	5	5
	Total	36	25	30	46	65	54	56	32	49	38	30	44	32	17
Section J	66	FINANCIAL INTERMEDIATION													
		Insurance and pension funding, except compulsory social security													
		2	2	6	2	0	5	0	3	3	0	0	2	2	0
	Other	7	5	6	8	15	39	11	12	11	21	11	8	8	13
	Total	9	7	12	10	15	44	11	15	14	21	11	10	10	13
Section K		REAL ESTATE, RENTING AND BUSINESS ACTIVITIES													
70		Real estate activities													
		12	24	31	53	105	116	97	95	69	71	40	72	37	45
71		Renting of machinery and equipment without operator and of personal and household goods													
		2	3	7	6	11	10	8	7	1	12	8	5	6	6
72		Computer and related activities													
		19	17	33	39	28	39	28	31	34	21	20	16	31	13
73		Research and development													
		2	3	0	1	5	6	1	6	4	0	0	0	3	2
74		Other business activities													
		136	119	153	198	191	976	251	209	216	169	187	161	134	129
	Total	171	166	224	297	340	1,147	385	348	324	273	255	254	211	195
Section L		PUBLIC ADMINISTRATION AND DEFENCE; COMPULSORY SOCIAL SECURITY													
		0	0	2	0	2	1	0	0	2	1	1	0	1	1
Section M		EDUCATION													
		5	7	11	5	7	4	1	2	8	5	7	3	4	2
Section N		HEALTH AND SOCIAL WORK													
		7	5	14	8	8	15	12	3	18	21	17	13	11	14
Section O		OTHER COMMUNITY, SOCIAL & PERSONAL SERVICE ACTIVITIES													
		36	27	44	32	48	48	58	76	54	37	30	50	49	31
Section P		PRIVATE HOUSEHOLDS EMPLOYING STAFF AND UNDIFFERENTIATED PRODUCTION ACTIVITIES OF HOUSEHOLDS FOR OWN USE													
		0	0	0	1	0	0	1	0	0	0	0	0	0	0
Section Q		EXTRA-TERRITORIAL ORGANISATIONS AND BODIES													
		0	0	0	0	0	0	0	0	0	0	1	1	0	0
ALL OTHERS ²		45	46	63	82	71	68	88	56	52	41	37	44	31	71
Total		666	575	858	938	1,006	2,018	1,311	1,027	974	849	779	777	633	642

p Provisional.

¹ The Standard Industrial Classification (SIC 2003) definitions can be found at [http://www.statistics.gov.uk/methods_quality/sic/downloads/UK_SIC_Vol1\(2003\).pdf](http://www.statistics.gov.uk/methods_quality/sic/downloads/UK_SIC_Vol1(2003).pdf)

² Including unknown or invalid SIC codes and non-trading or dormant companies

³ The figure for Q4 2008 includes 729 separate managed service companies for which BDO Stoy Hayward was appointed administrator. The administrations were approved in September 2008, but the statistics are counted based on the date registered at Companies House (which fell in October 2008, i.e. Q4).

3c. Company voluntary arrangements by industry (SIC 2003)¹ England & Wales

not seasonally adjusted

Section	Sub-section 2 digit 3 digit		2007		2008				2009				2010			
			Q3	Q4	Q1	Q2	Q3	Q4	Q1	Q2	Q3	Q4	Q1	Q2	Q3	Q4 p
Section A		AGRICULTURE, HUNTING AND FORESTRY	1	0	0	1	1	0	1	0	2	1	0	2	0	1
Section B		FISHING	0	0	0	0	0	0	0	0	0	0	0	0	0	0
Section C		MINING AND QUARRYING	0	0	0	0	2	0	0	1	0	0	0	0	0	0
Section D		MANUFACTURING														
	DA	Food products, beverages and tobacco	0	1	2	1	1	1	2	0	3	2	2	1	1	1
	DB	Textiles and textile products	0	0	2	3	2	1	0	0	0	2	0	3	1	0
	DC	Leather and leather products	0	0	0	0	0	0	0	0	0	0	0	0	0	0
	DD	Wood and wood products	1	0	1	3	0	1	0	2	2	1	1	1	1	3
	DE	Pulp, paper and paper products publishing and printing	1	2	6	3	4	2	7	4	3	4	4	3	3	7
	DF	Coke, refined petroleum products and nuclear fuel	0	0	0	1	0	0	0	0	0	0	0	0	0	0
	DG	Chemicals, chemical products and man-made fibres	0	0	1	1	1	1	1	0	0	1	0	0	0	0
	DH	Rubber and plastic products	4	0	1	2	0	0	1	1	2	2	1	0	1	0
	DI	Other non-metallic mineral products	0	0	0	0	2	0	1	1	0	0	2	1	0	2
	DJ	Basic metals and fabricated metal products	7	3	13	8	6	4	2	3	5	7	12	11	6	3
	DK	Machinery and equipment not elsewhere classified	0	1	0	0	0	1	0	1	0	2	1	3	3	3
	DL	Electrical and optical equipment	6	2	1	1	1	0	1	2	4	1	1	2	3	3
	DM	Transport equipment	0	1	0	0	0	0	0	1	1	0	3	1	1	0
	DN	Not elsewhere classified	6	2	4	5	3	3	3	11	3	5	3	6	2	4
		Total	25	12	31	28	20	14	18	26	23	27	30	32	22	23
Section E		ELECTRICITY, GAS AND WATER SUPPLY	0	0	0	0	0	1	0	0	0	0	1	0	0	0
Section F	45	CONSTRUCTION														
	451	Site preparation	0	1	3	0	0	0	1	0	1	0	2	1	2	0
	452	Building of complete constructions or parts thereof; civil engineering	7	8	11	19	17	15	25	14	26	11	20	16	13	13
	453	Building installation	3	6	3	8	7	5	14	8	6	8	9	19	7	9
	454	Building completion	5	3	6	1	4	4	8	1	11	5	6	6	4	4
	455	Renting of construction or demolition equipment with operator	0	0	1	0	0	0	1	0	0	0	0	0	0	0
		Total	15	18	24	28	28	24	49	23	44	24	37	42	26	26
Section G		WHOLESALE AND RETAIL TRADE; REPAIR OF MOTOR VEHICLES, MOTOR CYCLES AND PERSONAL AND HOUSEHOLD GOODS														
	50	Sale, maintenance and repair of motor vehicles and motorcycles; retail sale of automotive fuel	3	2	5	1	4	2	1	7	2	9	4	4	2	1
	51	Wholesale trade and commission trade, except of motor vehicles and motorcycles	9	3	2	4	10	8	8	5	11	11	10	5	6	9
	52	Retail trade, except of motor vehicles and motorcycles; repair of personal and household goods	8	2	10	3	6	10	9	5	16	11	6	11	17	13
		Total	20	7	17	8	20	20	18	17	29	31	20	20	25	23
Section H	55	HOTELS AND RESTAURANTS														
	551	Hotels	0	0	1	3	1	0	2	4	2	4	2	6	2	3
	553	Restaurants	8	1	3	3	4	8	3	4	5	8	5	14	3	5
	554	Bars	1	3	1	2	10	10	2	3	8	3	4	5	7	4
		Other	1	1	3	0	0	1	1	0	2	2	0	1	0	0
		Total	10	5	8	8	15	19	8	11	17	17	11	26	12	12
Section I		TRANSPORT, STORAGE AND COMMUNICATION														
	60	Land transport, transport via pipelines	4	2	1	2	4	7	2	1	3	8	6	7	8	1
	61	Water transport	0	0	0	0	0	0	0	0	0	0	0	0	0	0
	62	Air transport	0	0	0	0	0	1	0	0	0	0	0	0	1	0
	63	Supporting and auxiliary transport activities; activities of travel agencies	1	2	1	1	0	1	0	1	0	2	3	1	0	0
	64	Post and telecommunications	2	1	3	1	1	0	0	1	2	2	0	3	4	1
		Total	7	5	5	4	5	9	2	3	5	12	9	11	13	2
Section J		FINANCIAL INTERMEDIATION														
	66	Insurance and pension funding, except compulsory social security	0	1	0	0	0	0	0	0	0	1	1	0	0	0
		Other	1	0	2	1	1	2	2	3	2	1	0	4	1	0
		Total	1	1	2	1	1	2	2	3	2	2	1	4	1	0
Section K		REAL ESTATE, RENTING AND BUSINESS ACTIVITIES														
	70	Real estate activities	4	2	0	4	6	4	10	7	2	14	11	9	7	7
	71	Renting of machinery and equipment without operator and of personal and household goods	0	0	1	0	1	0	0	2	2	1	2	1	0	1
	72	Computer and related activities	3	2	10	9	10	4	4	9	6	1	7	11	5	13
	73	Research and development	1	0	1	0	1	1	0	0	2	2	0	0	1	1
	74	Other business activities	32	15	24	24	33	27	29	34	41	61	48	47	30	35
		Total	40	19	36	37	51	36	43	52	53	79	68	68	43	57
Section L		PUBLIC ADMINISTRATION AND DEFENCE; COMPULSORY SOCIAL SECURITY	0	0	0	1	0	0	0	0	0	0	2	0	0	0
Section M		EDUCATION	2	3	1	3	2	3	1	1	2	3	0	0	1	3
Section N		HEALTH AND SOCIAL WORK	1	2	2	1	5	1	2	3	2	4	5	4	3	6
Section O		OTHER COMMUNITY, SOCIAL & PERSONAL SERVICE ACTIVITIES	4	14	9	6	7	11	8	12	10	11	15	17	6	13
Section P		PRIVATE HOUSEHOLDS EMPLOYING STAFF AND UNDIFFERENTIATED PRODUCTION ACTIVITIES OF HOUSEHOLDS FOR OWN USE	0	0	0	0	0	1	0	0	0	0	0	0	0	0
Section Q		EXTRA-TERRITORIAL ORGANISATIONS AND BODIES	0	0	0	0	0	0	0	0	0	0	0	0	0	0
ALL OTHER ²			3	5	5	5	10	8	4	5	5	8	5	6	7	4
Total			129	91	140	131	167	149	156	157	194	219	204	232	159	170

p Provisional.

¹ The Standard Industrial Classification (SIC 2003) definitions can be found at [http://www.statistics.gov.uk/methods_quality/sic/downloads/UK_SIC_Vol1\(2003\).pdf](http://www.statistics.gov.uk/methods_quality/sic/downloads/UK_SIC_Vol1(2003).pdf)

² Including unknown or invalid SIC codes and non-trading or dormant companies

3d. Creditors' Voluntary Liquidations following Administration¹ England & Wales

not seasonally adjusted

Year		Number of new cases
2001		:
2002		:
2003		0
2004		165
2005		681
2006		914
2007		1,095
2008		993
2009		1,469
p 2010		1,483
2001	Q1	:
	Q2	:
	Q3	:
	Q4	:
2002	Q1	:
	Q2	:
	Q3	:
	Q4	:
2003	Q1	:
	Q2	:
	Q3	0
	Q4	0
2004	Q1	12
	Q2	18
	Q3	36
	Q4	99
2005	Q1	204
	Q2	147
	Q3	149
	Q4	181
2006	Q1	212
	Q2	216
	Q3	244
	Q4	242
2007	Q1	276
	Q2	285
	Q3	264
	Q4	270
2008	Q1	270
	Q2	223
	Q3	264
	Q4	236
2009	Q1	340
	Q2	370
	Q3	355
	Q4	404
2010	Q1	469
	Q2	399
	Q3	333
	Q4	282

Percentage change, latest quarter on corresponding quarter of previous year

2010	Q4	-30.2
-------------	----	-------

p Provisional

: Not applicable

¹ Since the revisions to corporate administration under the Enterprise Act, those administrations which resulted in a Creditors' Voluntary Liquidation (CVL) have been separately recorded by Companies House. These post-Administration new case CVLs are not included under the headline CVL figures at Table 1 as they do not represent a new company entering into an insolvency procedure for the first time. Similar information for Administrations converting to a Compulsory Liquidation or to a Company Voluntary Arrangement is not available; however numbers of these are relatively low in comparison.

4. Insolvencies

Scotland

not seasonally adjusted

Year	Individuals ¹			Companies ³		
	Total	Sequestrations (No. of LILA ²)	Protected Trust Deeds	Total	Compulsory Liquidations	Creditors' Voluntary Liquidations ⁴
2001	6,827	3,048	3,779	602	378	224
2002	8,389	3,215	5,174	788	556	232
2003	8,780	3,328	5,452	631	436	195
2004	9,321	3,297	6,024	621	431	190
2005	11,897	5,033	6,864	569	420	149
2006	13,789	5,566	8,223	549	416	133
2007	13,924	6,331	7,593	539	439	100
2008	19,991	12,449 (7,133)	7,542	524	437	87
2009	23,541	14,415 (8,775)	9,126	584	432	152
p 2010	20,329	11,891 (6,801)	8,438	1,041	735	306
2001	Q1 1,503	709	794	166	102	64
	Q2 1,746	750	996	141	82	59
	Q3 1,881	839	1,042	108	75	33
	Q4 1,697	750	947	187	119	68
2002	Q1 1,858	832	1,026	240	170	70
	Q2 2,136	797	1,339	175	123	52
	Q3 2,247	834	1,413	184	139	45
	Q4 2,148	752	1,396	189	124	65
2003	Q1 2,015	799	1,216	183	133	50
	Q2 2,189	858	1,331	168	118	50
	Q3 2,367	845	1,522	154	109	45
	Q4 2,209	826	1,383	126	76	50
2004	Q1 2,154	720	1,434	153	95	58
	Q2 2,160	851	1,309	147	110	37
	Q3 2,441	923	1,518	168	113	55
	Q4 2,566	803	1,763	153	113	40
2005	Q1 2,462	908	1,554	140	103	37
	Q2 2,857	1,334	1,523	159	120	39
	Q3 3,628	1,496	2,132	151	115	36
	Q4 2,950	1,295	1,655	119	82	37
2006	Q1 3,187	1,298	1,889	128	96	32
	Q2 3,500	1,263	2,237	133	99	34
	Q3 3,562	1,489	2,073	156	132	24
	Q4 3,540	1,516	2,024	132	89	43
2007	Q1 3,581	1,617	1,964	166	132	34
	Q2 3,498	1,606	1,892	165	131	34
	Q3 3,527	1,545	1,982	125	105	20
	Q4 3,318	1,563	1,755	83	71	12
2008	Q1 3,324	1,444	1,880	102	95	7
	Q2 4,814	2,932 (1,709)	1,882	132	111	21
	Q3 6,020	4,077 (2,773)	1,943	127	111	16
	Q4 5,833	3,996 (2,651)	1,837	163	120	43
2009	Q1 5,743	3,772 (2,284)	1,971	161	124	37
	Q2 6,328	3,764 (2,394)	2,564	146	107	39
	Q3 5,777	3,514 (2,107)	2,263	123	95	28
	Q4 5,693	3,365 (1,990)	2,328	154	106	48
2010	Q1 5,200	3,167 (1,905)	2,033	275	202	73
	Q2 p 5,378	p 3,139 (1,897)	p 2,239	297	215	82
	Q3 p 5,168	p 3,092 (1,631)	p 2,076	224	154	70
	p Q4 4,583	2,493 (1,368)	2,090	245	164	81

Percentage change, latest quarter on corresponding quarter of previous year

2010	Q4	-19.5	-25.9	(-31.3)	-10.2	59.1	54.7	68.8
-------------	----	-------	-------	---------	-------	------	------	------

p Provisional.

¹ Source: Accountant in Bankruptcy (AiB). Latest News Release <http://www.aib.gov.uk/quarter-3-insolvency-statistics-201011>.

² On 1 April 2008, Part 1 of the Bankruptcy and Diligence etc. (Scotland) Act 2007 came into force making significant changes to some aspects of bankruptcy, debt relief and debt enforcement in Scotland. This included the introduction of the new route into bankruptcy for people with low income and low assets (LILA). Of the number or sequestrations, individuals who meet LILA criteria are shown in brackets (See "Notes to Editors" paragraph 15).

³ Source: Companies House.

⁴ Including those companies which had previously been in administration or other insolvency procedure

4a. Compulsory liquidations by industry (SIC 2003)¹
Scotland

		not seasonally adjusted															
		2007 ²				2008				2009				2010			
Section	Sub-section 2 digit 3 digit	Q1	Q2	Q3	Q4	Q1	Q2	Q3	Q4	Q1	Q2	Q3	Q4	Q1	Q2	Q3	Q4 p
Section A	AGRICULTURE, HUNTING AND FORESTRY	1	0	3	0	0	0	1	2	0	1	0	0	1	1	0	0
Section B	FISHING	0	0	0	0	0	0	0	0	1	2	0	0	0	0	0	0
Section C	MINING AND QUARRYING	0	0	0	1	0	0	0	1	0	0	2	0	0	0	2	1
Section D	MANUFACTURING																
DA	Food products, beverages and tobacco	0	1	0	0	0	1	0	1	1	2	0	2	1	2	0	2
DB	Textiles and textile products	3	1	1	2	0	1	0	0	0	2	0	0	0	2	0	1
DC	Leather and leather products	0	0	0	0	0	0	0	0	0	0	0	0	0	0	0	0
DD	Wood and wood products	0	1	1	0	0	0	1	0	1	1	2	1	1	0	1	2
DE	Pulp, paper and paper products publishing and printing	0	5	2	1	2	1	0	2	0	2	0	1	2	2	2	1
DF	Coke, refined petroleum products and nuclear fuel	0	0	0	0	0	0	0	0	0	0	0	0	0	0	0	0
DG	Chemicals, chemical products and man-made fibres	0	0	0	0	0	0	1	1	0	0	0	0	0	0	0	1
DH	Rubber and plastic products	0	0	0	0	0	0	0	1	1	0	0	0	1	0	0	1
DI	Other non-metallic mineral products	1	0	0	0	0	1	0	0	0	0	0	0	1	2	0	0
DJ	Basic metals and fabricated metal products	3	2	2	0	1	1	2	0	4	3	3	5	3	1	7	2
DK	Machinery and equipment not elsewhere classified	1	0	0	0	0	1	0	0	2	0	0	0	0	2	1	1
DL	Electrical and optical equipment	1	1	0	0	0	0	0	0	0	1	0	0	3	1	0	1
DM	Transport equipment	0	1	0	0	0	0	0	0	0	0	0	0	1	0	0	0
DN	Not elsewhere classified	2	2	1	0	0	2	1	0	10	2	3	2	16	16	13	17
	Total	11	14	7	3	3	8	5	5	10	13	7	12	16	16	13	17
Section E	ELECTRICITY, GAS AND WATER SUPPLY	0	0	0	0	0	1	0	0	0	0	0	0	0	0	1	0
Section F	45 CONSTRUCTION																
451	Site preparation	0	0	1	0	0	1	0	0	0	0	0	0	0	2	0	1
452	Building of complete constructions or parts thereof; civil engineering	9	7	8	5	8	6	8	11	9	6	9	10	18	22	14	17
453	Building installation	2	6	5	4	8	4	5	7	7	1	1	6	14	12	7	10
454	Building completion	4	4	3	3	3	4	2	6	5	6	5	6	9	10	9	10
455	Renting of construction or demolition equipment with operator	2	0	0	0	0	0	0	1	0	1	0	0	1	2	0	0
	Total	17	17	17	12	19	15	15	25	21	14	15	22	42	48	30	38
Section G	WHOLESALE AND RETAIL TRADE; REPAIR OF MOTOR VEHICLES, MOTOR CYCLES AND PERSONAL AND HOUSEHOLD GOODS																
50	Sale, maintenance and repair of motor vehicles and motorcycles; retail sale of automotive fuel	2	1	2	0	2	3	1	4	3	2	2	1	2	2	1	1
51	Wholesale trade and commission trade, except of motor vehicles and motorcycles	2	4	6	1	2	3	3	4	4	5	6	5	7	7	8	4
52	Retail trade, except of motor vehicles and motorcycles; repair of personal and household goods	5	8	8	3	7	5	2	7	6	1	1	3	5	9	8	7
	Total	9	13	16	4	11	11	6	15	13	8	9	10	14	19	13	11
Section H	55 HOTELS AND RESTAURANTS																
551	Hotels	1	2	2	0	0	3	1	0	2	4	2	0	1	3	1	5
553	Restaurants	8	3	2	3	2	4	5	2	3	3	4	5	13	6	7	13
554	Bars	9	6	1	1	1	4	2	3	2	1	1	3	6	6	6	6
	Other	4	2	1	0	0	1	1	3	1	0	1	2	1	6	0	3
	Total	22	13	6	4	3	12	9	8	8	8	8	10	21	21	14	27
Section I	TRANSPORT, STORAGE AND COMMUNICATION																
60	Land transport; transport via pipelines	1	4	2	2	2	2	3	2	3	2	2	1	6	3	7	8
61	Water transport	0	1	0	0	0	0	0	0	0	0	0	0	0	0	0	0
62	Air transport	0	1	0	0	0	0	0	0	0	0	0	0	0	0	0	0
63	Supporting and auxiliary transport activities; activities of travel agencies	0	1	1	0	2	1	1	2	0	0	0	0	0	3	1	0
64	Post and telecommunications	0	0	0	1	1	1	1	2	2	0	0	2	2	1	1	0
	Total	1	7	3	3	5	4	5	6	5	2	2	3	8	7	9	8
Section J	FINANCIAL INTERMEDIATION																
66	Insurance and pension funding, except compulsory social security	0	0	0	0	1	0	0	0	0	0	0	0	0	0	0	0
	Other	0	0	1	0	1	0	2	2	0	0	0	0	2	4	1	2
	Total	0	0	1	0	2	0	2	2	0	0	0	0	2	4	1	2
Section K	REAL ESTATE, RENTING AND BUSINESS ACTIVITIES																
70	Real estate activities	4	8	7	1	3	4	1	7	5	9	6	5	9	17	5	7
71	Renting of machinery and equipment without operator and of personal and household goods	2	1	0	1	1	0	1	1	1	1	0	1	1	1	0	0
72	Computer and related activities	9	2	3	2	3	4	4	4	3	6	3	4	15	6	5	5
73	Research and development	0	0	0	1	2	0	0	0	1	0	0	0	0	0	1	0
74	Other business activities	41	49	31	26	33	37	52	29	34	30	30	32	57	57	40	31
	Total	56	60	41	31	42	45	58	41	44	46	39	42	82	81	51	43
Section L	PUBLIC ADMINISTRATION AND DEFENCE; COMPULSORY SOCIAL SECURITY	1	0	0	0	0	0	0	0	1	0	0	0	0	0	0	0
Section M	EDUCATION	1	2	1	1	2	1	0	0	0	1	1	1	0	1	1	0
Section N	HEALTH AND SOCIAL WORK	0	0	0	1	3	2	1	1	0	3	0	0	1	3	0	1
Section O	OTHER COMMUNITY, SOCIAL & PERSONAL SERVICE ACTIVITIES	8	3	6	6	2	4	7	4	7	8	5	3	6	7	9	6
Section P	PRIVATE HOUSEHOLDS EMPLOYING STAFF AND UNDIFFERENTIATED PRODUCTION ACTIVITIES OF HOUSEHOLDS FOR OWN USE	0	0	0	0	0	0	0	1	0	0	0	0	0	0	0	0
Section Q	EXTRA-TERRITORIAL ORGANISATIONS AND BODIES	0	0	0	0	0	0	0	0	0	0	0	0	0	0	0	0
ALL OTHERS ³		5	2	4	5	3	8	2	9	14	1	7	3	9	7	10	10
	Total	132	131	105	71	95	111	111	120	124	107	95	106	202	215	154	164

p Provisional.
¹ The Standard Industrial Classification (SIC 2003) definitions can be found at [http://www.statistics.gov.uk/methods_quality/sic/downloads/UK_SIC_V01\(2003\).pdf](http://www.statistics.gov.uk/methods_quality/sic/downloads/UK_SIC_V01(2003).pdf)
² Including unknown or invalid SIC codes and non-trading or dormant companies
³ Prior to Q1 2007, company liquidations in Scotland were classified according to the Insolvency Trade Classifications (ITC); these breakdowns are available at <http://www.insolvency.gov.uk/otherinformation/statistics/2007/02/table7.htm> from Q1 1998 to Q4 2006.

4b. Creditors' voluntary liquidations by industry (SIC 2003)^{1,4}
Scotland

Section	Sub-section 2 digit 3 digit	not seasonally adjusted															
		2007 ³				2008				2009				2010			
		Q1	Q2	Q3	Q4	Q1	Q2	Q3	Q4	Q1	Q2	Q3	Q4	Q1	Q2	Q3	Q4 p
Section A	AGRICULTURE, HUNTING AND FORESTRY	0	0	0	0	0	0	0	0	1	0	1	0	0	0	0	0
Section B	FISHING	0	0	0	0	0	0	0	0	0	0	0	0	1	0	0	0
Section C	MINING AND QUARRYING	0	0	0	0	0	0	0	0	1	0	0	0	0	0	1	0
Section D	MANUFACTURING																
DA	Food products, beverages and tobacco	0	0	0	0	0	1	0	1	0	1	0	0	3	0	1	0
DB	Textiles and textile products	1	0	0	0	0	0	0	2	0	0	1	1	0	0	1	1
DC	Leather and leather products	0	0	0	0	0	0	0	0	0	0	0	0	0	0	0	0
DD	Wood and wood products	0	0	0	0	0	0	0	0	1	0	0	0	2	1	1	1
DE	Pulp, paper and paper products publishing and printing	0	0	0	1	0	0	0	0	0	0	0	1	3	1	1	0
DF	Coke, refined petroleum products and nuclear fuel	0	0	0	0	0	0	0	0	0	0	0	0	0	0	0	0
DG	Chemicals, chemical products and man-made fibres	0	0	0	0	0	0	0	0	0	0	0	0	0	0	0	0
DH	Rubber and plastic products	0	0	0	0	0	0	0	0	0	0	0	0	0	0	0	1
DI	Other non-metallic mineral products	0	0	0	1	0	0	0	0	0	0	0	0	0	1	0	0
DJ	Basic metals and fabricated metal products	0	2	0	0	0	0	0	0	2	0	0	0	0	3	1	2
DK	Machinery and equipment not elsewhere classified	0	0	2	0	1	1	0	0	0	1	0	0	1	0	1	0
DL	Electrical and optical equipment	0	0	0	0	0	0	0	0	0	0	0	3	1	0	1	0
DM	Transport equipment	0	1	0	0	0	0	0	0	0	0	1	0	0	1	0	0
DN	Not elsewhere classified	0	2	0	0	0	0	0	0	0	0	1	2	2	0	1	4
	Total	1	4	3	2	1	2	0	3	3	2	3	7	13	6	8	9
Section E	ELECTRICITY, GAS AND WATER SUPPLY	0	1	0	0	0	0	0	0	0	0	0	0	0	0	0	0
Section F	45 CONSTRUCTION																
451	Site preparation	0	0	0	0	0	0	0	0	0	0	0	0	0	1	1	0
452	Building of complete constructions or parts thereof; civil engineering	5	2	2	2	0	1	0	2	0	1	2	3	6	6	6	11
453	Building installation	0	3	1	1	2	0	1	0	1	3	1	1	1	5	3	3
454	Building completion	1	0	0	0	0	1	0	2	3	3	2	1	1	9	1	2
455	Renting of construction or demolition equipment with operator	0	0	0	0	0	0	0	0	0	0	0	0	0	1	0	0
	Total	6	5	3	3	2	2	1	4	4	7	5	5	10	22	11	16
Section G	WHOLESALE AND RETAIL TRADE; REPAIR OF MOTOR VEHICLES, MOTOR CYCLES AND PERSONAL AND HOUSEHOLD GOODS																
50	Sale, maintenance and repair of motor vehicles and motorcycles; retail sale of automotive fuel	2	0	1	0	0	0	0	2	0	1	0	3	1	1	0	0
51	Wholesale trade and commission trade, except of motor vehicles and motorcycles	0	1	1	0	1	0	2	3	4	2	1	3	4	6	3	0
52	Retail trade, except of motor vehicles and motorcycles; repair of personal and household goods	3	5	3	0	1	1	0	3	3	4	1	4	7	5	4	5
	Total	5	6	5	0	2	1	2	8	7	7	2	10	12	12	7	5
Section H	55 HOTELS AND RESTAURANTS																
551	Hotels	0	0	0	0	0	0	0	0	0	0	0	0	0	0	2	1
553	Restaurants	1	1	0	0	0	0	0	0	1	1	0	1	3	1	2	2
554	Bars	1	0	1	0	0	0	1	0	1	0	0	0	0	3	5	2
	Other	1	0	0	0	0	0	0	0	0	0	0	0	2	0	3	2
	Total	3	1	1	0	0	0	1	0	2	1	0	1	5	4	12	7
Section I	60 TRANSPORT, STORAGE AND COMMUNICATION																
60	Land transport; transport via pipelines	0	3	0	1	0	0	0	3	0	2	2	2	2	3	0	3
61	Water transport	0	1	0	0	0	0	0	0	0	0	0	0	0	0	0	0
62	Air transport	0	0	0	0	0	0	0	1	0	0	0	0	0	0	0	0
63	Supporting and auxiliary transport activities; activities of travel agencies	1	0	0	0	0	1	0	0	1	0	1	2	2	1	3	3
64	Post and telecommunications	0	0	0	0	0	0	0	0	0	0	0	0	1	0	0	0
	Total	1	4	0	1	0	1	0	4	1	2	3	4	5	4	3	6
Section J	66 FINANCIAL INTERMEDIATION																
66	Insurance and pension funding, except compulsory social security	1	0	0	0	0	0	0	0	0	0	0	0	0	0	0	0
	Other	0	0	0	0	0	0	2	0	0	1	0	0	0	1	0	0
	Total	1	0	0	0	0	0	2	0	0	1	0	0	0	1	0	0
Section K	70 REAL ESTATE, RENTING AND BUSINESS ACTIVITIES																
70	Real estate activities	2	0	0	0	0	1	0	2	1	1	1	1	2	5	4	4
71	Renting of machinery and equipment without operator and of personal and household goods	0	0	0	0	0	1	0	1	0	1	0	0	1	0	0	1
72	Computer and related activities	0	2	0	0	0	1	1	2	2	1	2	2	1	1	3	1
73	Research and development	1	0	0	1	0	0	0	0	0	0	0	0	1	0	0	1
74	Other business activities	11	9	5	4	2	4	5	10	13	14	9	16	18	14	12	23
	Total	14	11	5	5	2	7	6	15	16	17	12	19	23	20	19	30
Section L	PUBLIC ADMINISTRATION AND DEFENCE; COMPULSORY SOCIAL SECURITY	0	0	0	0	0	1	0	0	0	0	0	0	0	0	0	0
Section M	EDUCATION	0	0	0	0	0	0	0	3	0	0	0	0	0	2	1	0
Section N	HEALTH AND SOCIAL WORK	0	1	0	0	0	0	0	0	0	0	0	0	0	0	0	0
Section O	OTHER COMMUNITY, SOCIAL & PERSONAL SERVICE ACTIVITIES	0	1	3	1	0	0	3	2	1	2	1	2	2	5	5	3
Section P	PRIVATE HOUSEHOLDS EMPLOYING STAFF AND UNDIFFERENTIATED PRODUCTION ACTIVITIES OF HOUSEHOLDS FOR OWN USE	0	0	0	0	0	0	0	0	0	0	0	0	0	0	0	0
Section Q	EXTRA-TERRITORIAL ORGANISATIONS AND BODIES	0	0	0	0	0	0	0	0	0	0	0	0	0	0	0	0
ALL OTHERS ²		3	0	0	0	0	7	1	4	1	0	1	0	2	6	3	5
Total		34	34	20	12	7	21	16	43	37	39	28	48	73	82	70	81

^p Provisional.

¹ The Standard Industrial Classification (SIC 2003) definitions can be found at [http://www.statistics.gov.uk/methods_quality/sic/downloads/UK_SIC_Vol1\(2003\).pdf](http://www.statistics.gov.uk/methods_quality/sic/downloads/UK_SIC_Vol1(2003).pdf)

² Including unknown or invalid SIC codes and non-trading or dormant companies

³ Prior to Q1 2007, company liquidations in Scotland were classified according to the Insolvency Trade Classifications (ITC); these breakdowns are available at <http://www.insolvency.gov.uk/information/statistics/200702table1.htm> from Q1 1998 to Q4 2006.

⁴ Including those companies which had previously been in administration or other insolvency procedure

5. Receiverships, Administrations and Company Voluntary Arrangements¹

Scotland

not seasonally adjusted

Year	Receivership Appointments	Administrator Appointments ²	In Administration (Enterprise Act 2002) ²	Company Voluntary Arrangements	
2001	97	4	:	3	
2002	118	12	:	2	
2003	118	6	3	7	
2004	82	0	31	6	
2005	56	0	55	8	
2006	34	0	86	5	
2007	75	0	37	6	
2008	121	0	123	4	
2009	40	0	134	6	
p 2010	49	2	241	7	
2001	Q1	26	2	:	1
	Q2	27	1	:	1
	Q3	19	1	:	1
	Q4	25	0	:	0
2002	Q1	26	5	:	0
	Q2	26	3	:	1
	Q3	29	3	:	1
	Q4	37	1	:	0
2003	Q1	41	4	:	0
	Q2	21	1	:	3
	Q3	36	1	1	1
	Q4	20	0	2	3
2004	Q1	30	0	9	1
	Q2	23	0	11	4
	Q3	13	0	7	0
	Q4	16	0	4	1
2005	Q1	27	0	8	1
	Q2	9	0	7	4
	Q3	12	0	19	2
	Q4	8	0	21	1
2006	Q1	11	0	28	2
	Q2	16	0	20	1
	Q3	3	0	18	1
	Q4	4	0	20	1
2007	Q1	9	0	15	2
	Q2	22	0	11	1
	Q3	8	0	6	2
	Q4	36	0	5	1
2008	Q1	56	0	12	0
	Q2	17	0	35	2
	Q3	43	0	21	0
	Q4	5	0	55	2
2009	Q1	9	0	67	2
	Q2	8	0	30	2
	Q3	17	0	14	0
	Q4	6	0	23	2
2010	Q1	6	0	92	2
	Q2	22	1	51	1
	Q3	15	1	43	0
	p Q4	6	0	55	4

Percentage change, latest quarter on corresponding quarter of previous year

2010	Q4	0.0	:	139.1	:
------	----	-----	---	-------	---

p Provisional

: Not applicable

¹ Registered at Companies House

² See paragraph 7 of the Press Release "Notes to Editors" for changes wef 15 September 2003 under the Enterprise Act 2002

6. Insolvencies

Northern Ireland

not seasonally adjusted

Year	Individuals ¹			Companies			
	Total	Bankruptcy Orders	Individual Voluntary Arrangements	Total	Compulsory Liquidations ¹	Creditors' Voluntary Liquidations ^{2,3}	
2001	468	292	176	..	60	..	
2002	541	334	207	102	49	53	
2003	835	517	318	142	95	47	
2004	1,115	666	449	121	76	45	
2005	1,454	821	633	138	85	53	
2006	1,809	1,035	774	128	78	50	
2007	1,338	898	440	164	122	42	
2008	1,638	1,079	559	209	158	51	
2009	1,958	1,236	722	247	164	83	
p 2010	2,323	1,321	1,002	382	250	132	
2001	Q1	137	86	51	..	16	..
	Q2	137	88	49	..	18	..
	Q3	79	37	42	..	11	..
	Q4	115	81	34	..	15	..
2002	Q1	121	74	47	24	12	12
	Q2	143	85	58	19	5	14
	Q3	121	74	47	33	17	16
	Q4	156	101	55	26	15	11
2003	Q1	146	90	56	37	30	7
	Q2	219	141	78	42	25	17
	Q3	205	109	96	29	19	10
	Q4	265	177	88	34	21	13
2004	Q1	253	155	98	35	19	16
	Q2	282	173	109	39	27	12
	Q3	286	165	121	28	20	8
	Q4	294	173	121	19	10	9
2005	Q1	302	174	128	29	15	14
	Q2	438	241	197	47	28	19
	Q3	320	193	127	31	19	12
	Q4	394	213	181	31	23	8
2006	Q1	408	245	163	29	19	10
	Q2	494	285	209	41	24	17
	Q3	425	241	184	28	15	13
	Q4	482	264	218	30	20	10
2007	Q1	343	218	125	36	29	7
	Q2	338	228	110	38	29	9
	Q3	338	227	111	42	28	14
	Q4	319	225	94	48	36	12
2008	Q1	330	226	104	42	37	5
	Q2	479	331	148	57	42	15
	Q3	386	229	157	44	27	17
	Q4	443	293	150	66	52	14
2009	Q1	446	302	144	57	34	23
	Q2	560	355	205	65	46	19
	Q3	379	198	181	51	27	24
	Q4	573	381	192	74	57	17
2010	Q1	554	316	238	102	49	53
	Q2	636	363	273	116	92	24
	Q3	551	290	261	79	55	24
	p Q4	582	352	230	85	54	31

Percentage change, latest quarter on corresponding quarter of previous year

2010	Q4	1.6	-7.6	19.8	14.9	-5.3	82.4
-------------	----	-----	------	------	------	------	------

p Provisional

.. Not available

¹ Source: Department for Enterprise, Trade and Investment, Northern Ireland (DETINI)

² Source: Companies House

³ Including those companies which had previously been in administration or other insolvency procedure

7. Rate of company liquidations¹

Year		England & Wales		Scotland	
		% of Active Register	% of Total Register ²	% of Active Register	% of Total Register ²
2001	Q1	1.1	1.0	0.8	0.7
	Q2	1.1	1.0	0.8	0.7
	Q3	1.1	1.0	0.7	0.7
	Q4	1.1	1.0	0.8	0.7
2002	Q1	1.1	1.0	0.9	0.8
	Q2	1.1	1.0	0.9	0.8
	Q3	1.1	1.0	1.0	0.9
	Q4	1.1	1.0	1.0	0.9
2003	Q1	1.1	1.0	0.9	0.8
	Q2	1.0	0.9	0.8	0.8
	Q3	1.0	0.9	0.8	0.7
	Q4	0.9	0.8	0.7	0.6
2004	Q1	0.8	0.8	0.6	0.6
	Q2	0.8	0.7	0.6	0.5
	Q3	0.7	0.7	0.6	0.5
	Q4	0.7	0.6	0.6	0.6
2005	Q1	0.7	0.6	0.6	0.5
	Q2	0.7	0.6	0.6	0.5
	Q3	0.7	0.6	0.6	0.5
	Q4	0.7	0.6	0.5	0.5
2006	Q1	0.7	0.6	0.5	0.5
	Q2	0.7	0.6	0.5	0.4
	Q3	0.7	0.6	0.5	0.4
	Q4	0.6	0.6	0.5	0.4
2007	Q1	0.6	0.6	0.5	0.5
	Q2	0.6	0.5	0.5	0.5
	Q3	0.6	0.5	0.5	0.4
	Q4	0.6	0.5	0.4	0.4
2008	Q1	0.6	0.5	0.4	0.3
	Q2	0.6	0.5	0.3	0.3
	Q3	0.6	0.5	0.3	0.3
	Q4	0.7	0.6	0.4	0.4
2009	Q1	0.8	0.7	0.4	0.4
	Q2	0.8	0.7	0.5	0.4
	Q3	0.9	0.8	0.5	0.4
	Q4	0.9	0.8	0.4	0.4
2010	Q1	0.8	0.7	0.5	0.5
	Q2	0.8	0.7	0.7	0.6
	Q3	0.8	0.7	0.7	0.6
	p Q4	0.7	0.7	0.8	0.7

p provisional

¹ Calculated from company liquidations in the latest twelve month period divided by the average number of companies in that period. As from Q2 2008, register figures supplied by Companies House are counted at the end of each calendar month; previously they were monthly averages.

² The total register includes companies being wound up or dormant.