

STATISTICS RELEASE: INSOLVENCIES IN THE FOURTH QUARTER 2009

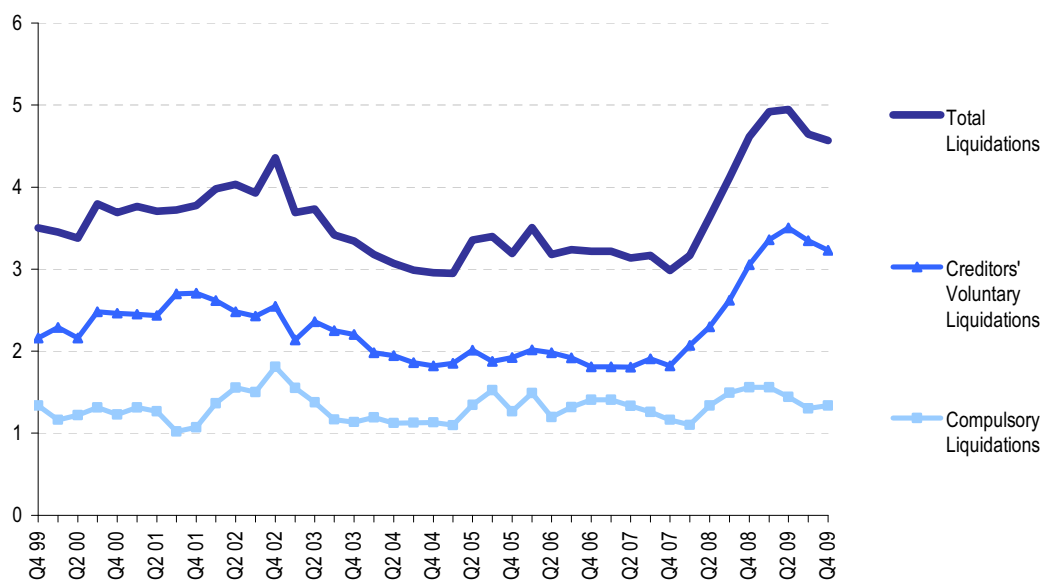
Statistics showing insolvencies in the fourth quarter of 2009 are published today (5 February) by the Insolvency Service.

COMPANY INSOLVENCIES

There were 4,566 compulsory liquidations and creditors' voluntary liquidations in total in England and Wales in the fourth quarter of 2009 (on a seasonally adjusted basis). This was a decrease of 1.7% on the previous quarter and a decrease of 1.1% on the same period a year ago.

Figure 1. Company Liquidations in England & Wales

Thousands, seasonally adjusted



Source: Insolvency Service and Companies House

This was made up of 1,338 compulsory liquidations (which are up 2.7% on the previous quarter but down 14.2% on the corresponding quarter of the previous year), and 3,228 creditors voluntary liquidations (which are down 3.5% on the previous quarter but up 5.7% on the corresponding quarter of the previous year).

In the twelve months ending Q4 2009, approximately 1 in 114 active companies (or 0.9%) went into liquidation, which is approximately the same as the previous quarter.

Table I. Company Liquidations in England and Wales (seasonally adjusted) ¹

	08Q4	09Q1r	09Q2r	09Q3r	09Q4p	% change – Q4 2009 on	
						Q4 2008	Q3 2009
Company Liquidations	4,615	4,919	4,944	4,648	4,566	-1.1	-1.7
of which: Compulsory	1,560	1,560	1,442	1,303	1,338	-14.2	2.7
Creditors' Voluntary ²	3,055	3,359	3,502	3,345	3,228	5.7	-3.5

Source: Insolvency Service and Companies House

p = provisional, r = revised

¹ Longer series back to 2000 are presented in the accompanying detailed tables.

² Where the CVL is the first insolvency procedure entered into (see Notes to Editors).

Additionally, there were 1,465 other corporate insolvencies in the fourth quarter of 2009 (not seasonally adjusted) comprising 397 receiverships, 849 administrations and 219 company voluntary arrangements. In total these represented a decrease of 39.7% on the same period a year ago (this should be interpreted in light of the Q4 2008 figure for administrations, detailed in note 4 to Table II below)

Table II. Other Corporate Insolvencies in England and Wales (not seasonally adjusted) ¹

	08Q4	09Q1	09Q2	09Q3	09Q4p	% change – Q4 2009 on	
						Q4 2008	
Receiverships ²	261	316	345	410	397	52.1	
Administrations ³	2,018 ⁴	1,311	1,027	974	849	-57.9 ⁴	
Company voluntary arrangements	149	156	157	194	219	47.0	

Source: Companies House

p = provisional,

¹ Longer series back to 2000 are presented in the accompanying detailed tables.

² Includes Law of Property Act receivers (see "Notes to Editors" paragraph 9).

³ Includes Administrator Appointments.

⁴ The figure for 08Q4 includes 729 separate managed service companies for which BDO Stoy Hayward was appointed administrator. The administrations were approved in September 2008, but the statistics are counted based on the date registered at Companies House (which fell in October 2008, i.e. Q4).

Note: The figures in Table II are not seasonally adjusted and are not, therefore, on the same basis as the headline figures in Table I. The accompanying detailed tables also include the non-seasonally adjusted series for corporate liquidations.

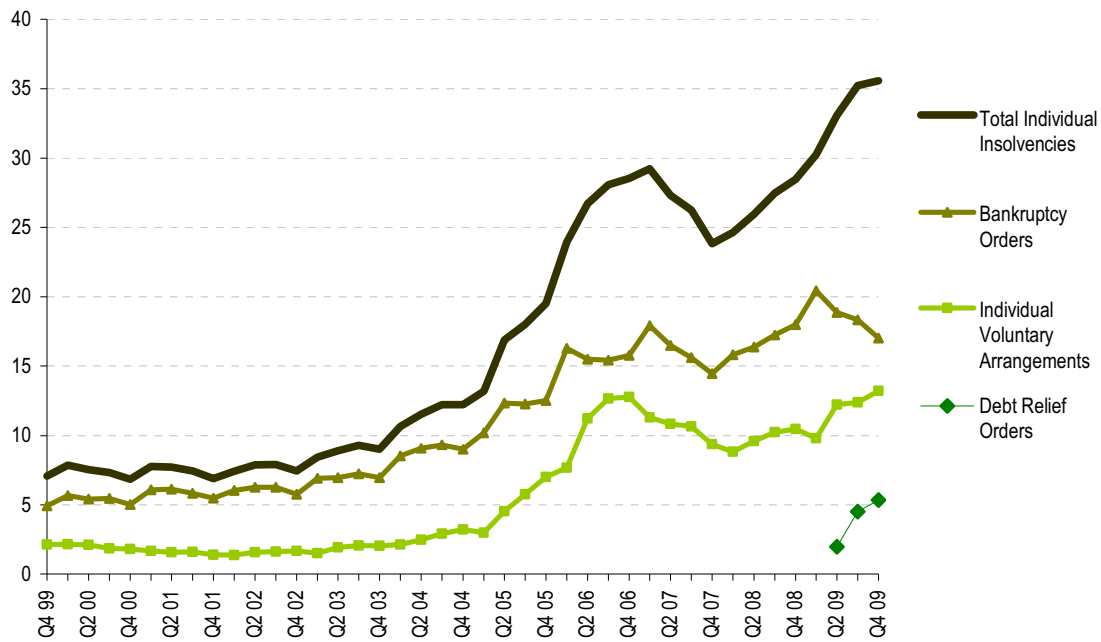
INDIVIDUAL INSOLVENCIES (not seasonally adjusted - see 'Notes to Editors' paragraph 13)

There were 35,574 individual insolvencies in England and Wales in the fourth quarter of 2009. This was an increase of 24.9% on the same period a year ago.

This was made up of 17,007 bankruptcies (which were down 5.5% on the corresponding quarter of the previous year), 13,219 Individual Voluntary Arrangements (IVAs), (which were up 26.3% on the corresponding quarter of the previous year) and 5,348 Debt Relief Orders (DROs) (see 'Notes to Editors' paragraph 12).

Figure 2. Individual insolvencies in England & Wales

Thousands, not seasonally adjusted



Source: Insolvency Service

Total of individual insolvencies for Q2 2009 onwards include Debt Relief Orders, which came into force on 6 April 2009

In the fourth quarter of 2009, 84% of bankruptcies were made on the petition of the debtor, slightly down on the three previous quarters, but comparable with 2008 as a whole. The percentage of bankruptcy orders involving trading debts (self-employed bankruptcies) was 12.4% in the third quarter of 2009 (fourth quarter 2009 figures for trading-related bankruptcies are not yet available), which is a decrease from the previous quarter, but comparable to the level in 2008 as a whole.

Table III. Individual Insolvencies in England and Wales (not seasonally adjusted) ¹

	08Q4	09Q1	09Q2	09Q3	09Q4p	% change – Q4 2009 on
						Q4 2008
Total Individuals	28,471	30,253	33,073	35,242	35,574	24.9
Bankruptcy Orders	18,004	20,446	18,870	18,347	17,007	-5.5
Debt Relief Orders	:	:	1,978	4,505	5,348	:
Individual Voluntary Arrangements	10,467	9,807	12,225	12,390	13,219	26.3

Source: Insolvency Service

p = provisional

: = Not Applicable

¹ Longer series back to 2000 are presented in the accompanying detailed tables, as are seasonally adjusted figures for individual voluntary arrangements (and for bankruptcy orders up to Q1 2009 only)

INSOLVENCIES IN SCOTLAND AND NORTHERN IRELAND

The following tables present recent trends in insolvencies in Scotland and Northern Ireland, complementing those for England and Wales above (longer series back to 2000 are presented in the accompanying detailed tables).

Table IV. Insolvencies in Scotland (not seasonally adjusted)

	08Q4	09Q1	09Q2	09Q3	09Q4p	% change – Q4 2009 on
						Q4 2008
Company Liquidations¹	163	161	146	123	154	-5.5
of which: Compulsory	120	124	107	95	106	-11.7
Creditors' Voluntary	43	37	39	28	48	11.6
Individuals^{2,3}	5,833	5,743 r	6,294	5,767	5,678	-2.7
of which: Sequestrations ³	3,996	3,772 r	3,730	3,504	3,350	-16.2
(of which: LILA)	(2,651)	(2,284)	(2,394)	(2,107) r	(1,990)	(-24.9)
Protected Trust Deeds	1,837	1,971	2,564	2,263	2,328	26.7

p = provisional, r = revised.

¹ Source: Companies House (Scotland)

² Source: Accountant in Bankruptcy (AiB). Latest News Release

<http://www.aib.gov.uk/About/annualtargets/quarterlyreports/Q3insolvencystatistics>

³ The sequestration figures include LILA (Low Income, Low Assets) cases. These were introduced as a new route into bankruptcy under the Bankruptcy and Diligence etc (Scotland) Act 2007, wef 1 April 2008.

Table V. Insolvencies in Northern Ireland (not seasonally adjusted)

	08Q4	09Q1	09Q2	09Q3	09Q4p	% change – Q4 2009 on
						Q4 2008
Company Liquidations	66	57	65	51	74	12.1
of which: Compulsory ¹	52	34	46	27	57	9.6
Creditors' Voluntary ²	14	23	19	24	17	21.4
Individuals¹	443	446	558	381	574	29.6
of which: Bankruptcies	293	302	353	200	382	30.4
IVAs	150	144	205	181	192	28.0

¹ Source: Department for Enterprise, Trade and Investment, Northern Ireland (DETINI)

² Source: Companies House

p = provisional

STATISTICS RELEASE: 2009 SUMMARY, ENGLAND AND WALES

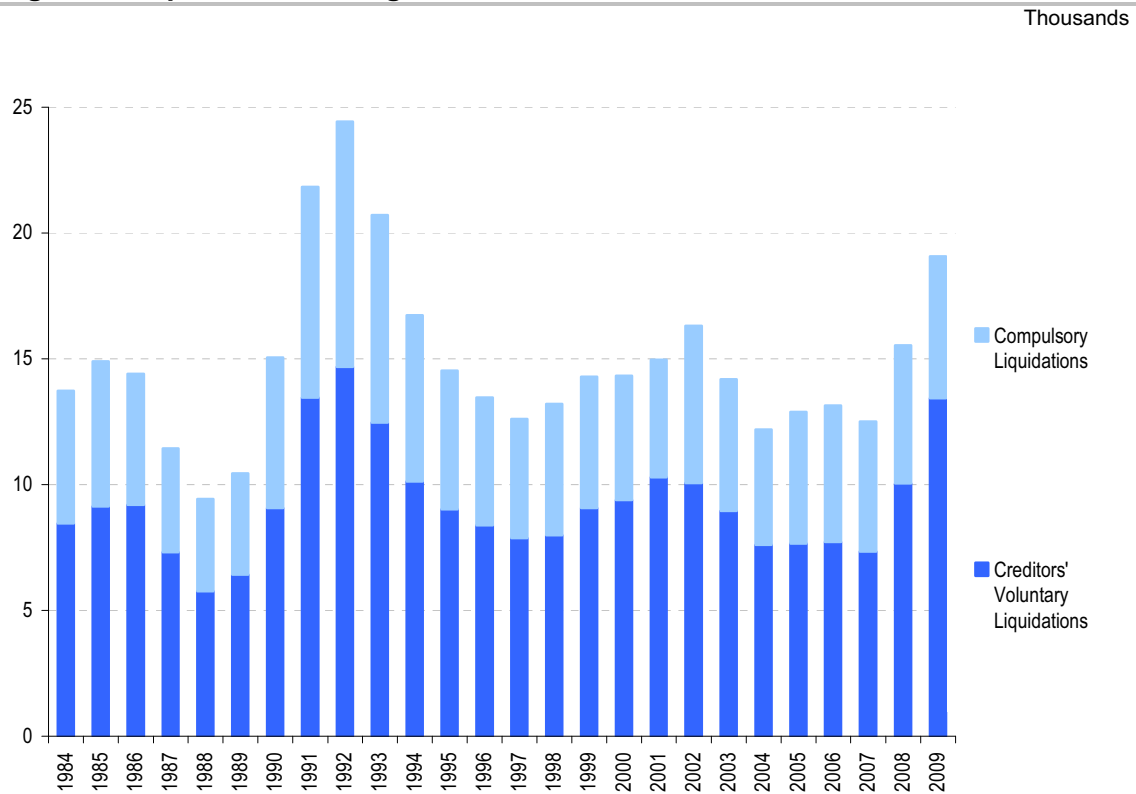
COMPANY INSOLVENCIES

There were 19,077 compulsory liquidations and creditors' voluntary liquidations in total in 2009 - an increase of 22.8% on 2008.

This was made up of 5,643 compulsory liquidations (which are up 2.7% on 2008), and 13,434 creditors' voluntary liquidations (which are up 33.8% on 2008).

Figure 3 shows trends in company liquidations since 1984.

Figure 3. Liquidations in England & Wales, 1984-2009



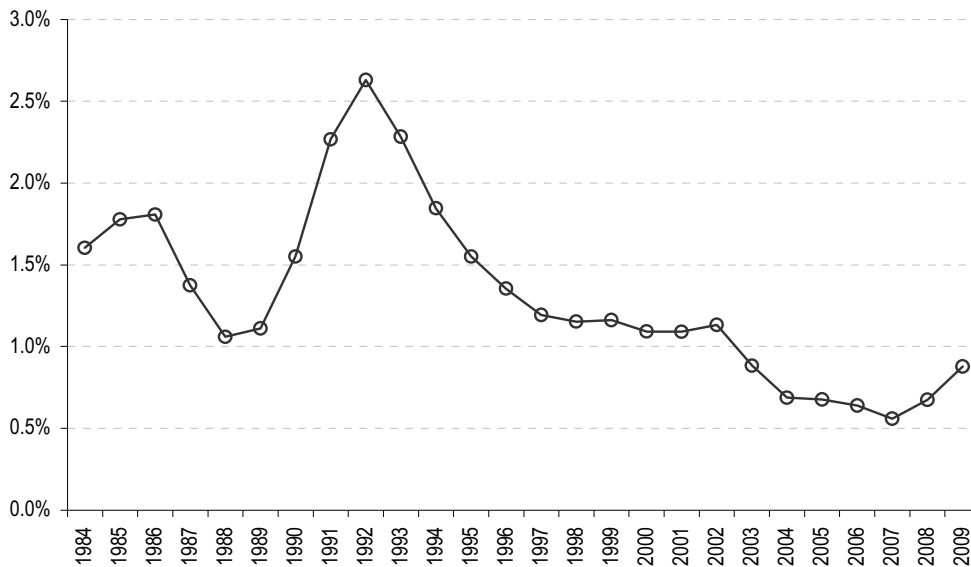
Source: Insolvency Service and Companies House

The number of companies that went into liquidation in 2009 equates to 0.9% of the active register (or approximately 1 in every 114 active companies). This is up on 2008 where 0.7% of companies on the active register went in to liquidation (or around 1 in every 150 active companies). Figure 4 provides a historical view of the liquidation rate in England and Wales since 1984.

In 2009 there were also 6,355 other corporate insolvencies, comprising 1,468 receiverships, 4,161 administrations and 726 company voluntary arrangements. In total these represented an increase of 1.3% on 2008.

Figure 4. Liquidation rate, England & Wales, 1984-2009

Per cent of active register



Source: Insolvency Service calculation based on data from the Insolvency Service and Companies House

INDIVIDUAL INSOLVENCIES

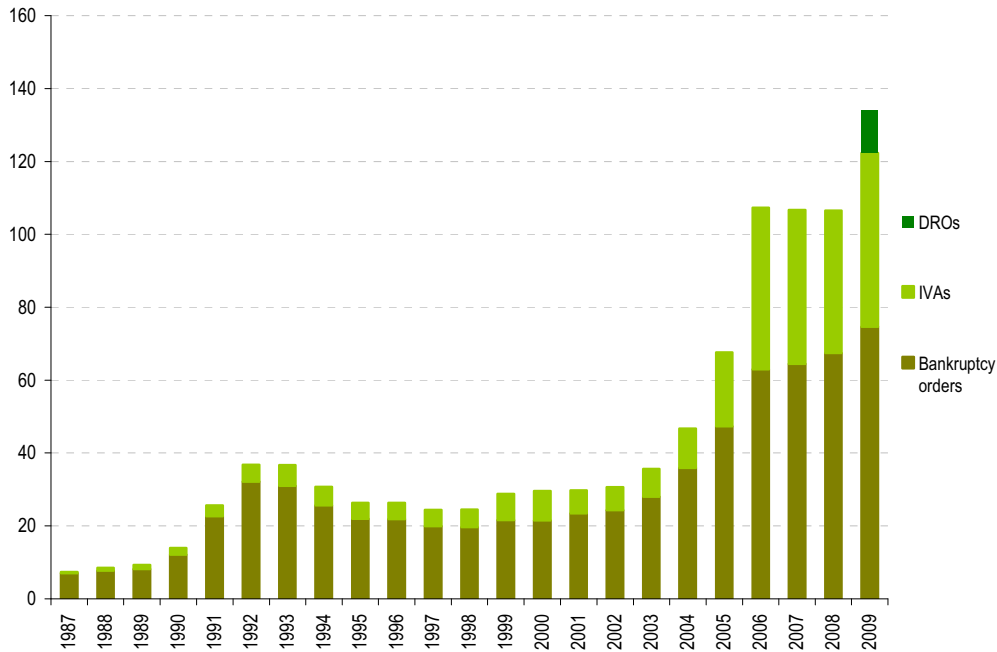
There were 134,142 individual insolvencies in England and Wales in 2009, equating to approximately 1 in every 320 adults (or 0.31%) and an increase of 25.9% from 2008, where there was approximately 1 insolvency in every 400 adults (or 0.25%). Figures 5 and 6 show how the number of insolvencies and the rate have changed since 1987 (when the first IVAs were registered).

The 134,142 insolvencies in 2009 comprised 74,670 bankruptcies (which were up 10.7% on 2008), 47,641 Individual Voluntary Arrangements (IVAs), (which were up 21.8% on 2008) and 11,831 Debt Relief Orders (DROs).

The Debt Relief Order is a new individual insolvency procedure which came into force on 6 April 2009 and which provides an alternative route into personal insolvency for certain categories of over-indebted individuals, subject to some restrictions. Additional details are provided under the "Notes to Editors", paragraph 12 and on the Insolvency Service website. Some of those who had a DRO approved would have been declared bankrupt had the DRO route not been an option, but it is not possible to quantify this proportion.

Figure 5. individual Insolvency in England & Wales, 1987-2009

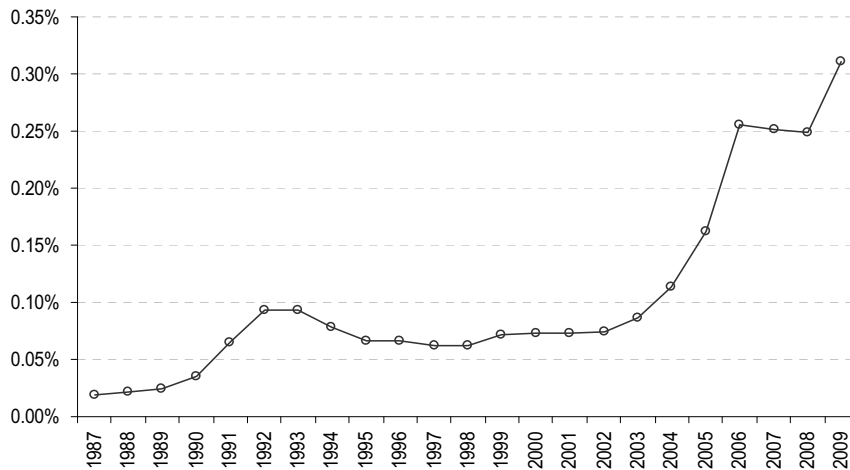
Thousands



Source: Insolvency Service

Figure 6. Rate of individual insolvencies in England & Wales, 1987-2009

Per cent of adult population¹



Source: Insolvency Service and Office for National Statistics

¹ Population estimates, except 2009 which is a projection

In 2009, 85.4% of bankruptcies were made on the petition of the debtor, up marginally from 83.9% in 2008. For bankruptcy orders there has been a pronounced shift towards debtor's petition bankruptcies and away from creditor's petitions in recent years.

Notes to Editors

1. The official Insolvency Statistics are the most comprehensive record of the number of corporate and individual insolvencies in England and Wales. Insolvencies in Scotland and Northern Ireland are also included, but are shown separately as they are covered by separate legislation, there are some differences in definition, and policy responsibility for them lies within the devolved administrations.
2. The statistics for England and Wales are derived from administrative records of the department for Business, Innovation and Skills (BIS) Insolvency Service and Companies House Executive Agencies. For Scotland, the company insolvency statistics are derived from administrative records at Companies House, Scotland. Figures for individual insolvencies in Scotland are sourced from the Office of the Accountant in Bankruptcy (AiB). The Northern Ireland statistics are derived from administrative records of the DETI Insolvency Service and Companies House. Generally speaking, numbers of cases are based on the date the insolvency procedure was registered on the administrative recording system, not on the date of the order or agreement.
3. Numbers of insolvencies are not directly comparable with official estimates of business stock, formations or closures. Statistics of business start-ups and closures that are directly comparable with each other have been assembled from VAT and PAYE registered unit records and are published by the Office for National Statistics (ONS) in the 'Business Demography' report. The latest figures are those for 2008, and were issued in an ONS press notice on 30 November 2009. More detailed figures are available via the on-line database NOMIS. Additionally, the 'Small and Medium Enterprise statistics (SME) for the UK and regions' report, published by BIS, estimates the total number of businesses in the United Kingdom at the start of 2008 at 4.8 million.
4. The X12ARIMA program (developed by Statistics Canada) is used for the seasonal adjustment of the insolvency statistics for England and Wales, this being the recommended program within UK National Statistics. Seasonal adjustment is a process by which changes that are due to seasonal or other calendar influences are removed to produce a clearer picture of the underlying behaviour of the data series. The data series covering Scotland and Northern Ireland do not demonstrate consistent seasonality and only the raw (unadjusted) series are presented.
5. Insolvent companies entering liquidation in England & Wales and Scotland are dealt with under the Insolvency Act of 1986 and, in Northern Ireland, by the Insolvency (Northern Ireland) Order 1989. They can **either** be the subject of a **compulsory liquidation** (winding-up) order obtained from the court by a creditor, shareholder or director **or** themselves pass a resolution, subject to the approval of a creditors' meeting that the company be wound up voluntarily (**creditors voluntary liquidations**, registered at Companies House/Companies Registry). In either case they are said to have been **wound-up**, and numbers are given in Tables 1, 4 and 6. A third type of winding-up, members' voluntary liquidation, is not included because it does not involve insolvency.
6. The Insolvency Act 1986 and, in Northern Ireland, the Insolvency (Northern Ireland) Order 1989 also introduced the procedures of **company administration orders** and **company voluntary arrangements (CVAs)**. The administration procedure gives a period of time during which creditors are restrained from taking action and a court appointed administrator puts forward proposals to deal with the company's financial difficulties. The CVA procedure aids business by enabling a company in financial difficulty to come to a binding agreement with its creditors. These are listed separately under Table 3 for England and Wales and Table 5 for Scotland.
7. The Enterprise Act 2002 introduced revisions to the corporate administration procedures, replacing Part II of the Insolvency Act 1986 with Schedule B1. These include the introduction of additional entry routes into administration that do not require the making of an administration order and a streamlined process for **Administrations** whereby a company can in some circumstances be dissolved without recourse to liquidation. The primary objective of administration (and of CVAs) is the rescue of the company as a going concern. These provisions came into force on 15th September 2003 and **Administrations under the Enterprise Act** have been included on Tables 3 and 5 from Q3 2003 (dissolution follows 3 months after a notice is filed with the Registrar of Companies, if no objections are raised by the court). On 27th March 2006 the Insolvency (Northern Ireland) Order 2005 introduced similar revisions to the corporate administration procedures in Northern Ireland, replacing Part III of the Insolvency (Northern Ireland) Order 1989 with Schedule B1.
8. Since the Enterprise Act 2002, a number of these streamlined administrations have subsequently converted to a creditors' voluntary liquidation. These liquidations in England and Wales are not included under the headline figures here or at Table 1, as they do not represent a new company entering into an

insolvency procedure for the first time. For completeness, however, they are included under Table 3d. It is also possible for the outcome of an administration to be entry into a company voluntary arrangement or a compulsory liquidation, but these cases are not separately identifiable from Companies House' information and will therefore be included within the new case figures for these procedures (the numbers involved are relatively few, compared to those entering CVL).

9. **Receivership appointments** comprise **administrative receivers** appointed under the 1986 Insolvency Act (and the 1989 Order for Northern Ireland) and certain **other receiver appointments, for example under the Law of Property Act 1925** - due to the use of the same statutory documentation for different types of receivership, it is not possible to give a breakdown between them. Law of Property Act receivers are classed as *Enforcement of Security* and are not insolvency procedures under the Insolvency Act of 1986. For this reason levels of, and trends in, receivership appointments should be interpreted with caution. The provisions of the Enterprise Act 2002 [section 250] (Insolvency [Northern Ireland] Order 2005 [Article 5]) have made some changes to the procedures for administrative receivership.

10. Figures sourced from Companies House (E&W) were revised previously (where appropriate) between 2007 Q1 and 2008 Q1. This reflected inaccuracies identified in the counting of cases during validation following the move to a new IT system in February 2008. The most noticeable revisions were to receiverships (where some companies had been counted more than once); the rest of this series prior to 2007 is not available on a revised basis. However, it should also be noted that because the revised counts have been run against a live database, they do not exactly reflect the original numbers of new cases that would have been reported.

11. Individual insolvencies in England and Wales and in Northern Ireland are made up of **bankruptcy orders** and **individual voluntary arrangements (IVAs)** (though see also paragraph 12 below regarding the introduction of **debt relief orders (DROs)** in England and Wales). Insolvent individuals in England and Wales are dealt with mainly under the Insolvency Act 1986. A bankruptcy order is made on the petition of the debtor or one or more of his creditors when the court is satisfied that there is no prospect of the debt being paid. (Figures for bankruptcy orders include orders relating to the estates of deceased debtors). There are also individual voluntary arrangements (IVAs) and deeds of arrangement (the latter under the Deeds of Arrangement Act 1914), which enable debtors to come to an agreement with their creditors. Table 2 summarises the above procedures for England and Wales (IVAs and Deeds of Arrangement are included under a single column) and Table 2a provides bankruptcy orders further split by petition type. Changes to bankruptcy law in England and Wales introduced by the Enterprise Act 2002 came into force on 1 April 2004 – the Act made no changes to the existing individual voluntary arrangement regime.

12. The Tribunals, Courts and Enforcement Act 2007 introduced a new route into personal insolvency called the debt relief order (DRO), which came into effect from 6 April 2009. DROs provide debt relief, subject to some restrictions, and are suitable for people domiciled in England and Wales who do not own their own home, have little surplus income (no more than £50 a month), assets (other than possibly a car) not exceeding £300, and less than £15,000 of debt. DROs do not involve the courts; they are run by The Insolvency Service in partnership with skilled debt advisers, called approved intermediaries. A DRO lasts for a period of one year before discharge and, as for bankruptcy, there are penalties in place for debtors who seek to abuse the process. Additional information may be found on The Insolvency Service website here: <http://www.insolvency.gov.uk/bankruptcy/alternativestobankruptcy.htm>. Table 2 includes DROs from the second quarter of 2009.

13. The series for bankruptcy orders can not be seasonally adjusted from Q2 2009 onwards due to the introduction (wef 6 April 2009) of debt relief orders (DROs). DROs comprise some of those individuals who would have otherwise been declared bankrupt (a subset of DRO-eligible cases, who were advised of the DRO route and chose to take it) and other individuals who, perhaps, could not have afforded the fee to enter into bankruptcy and who may have otherwise been in an informal debt management process, or been unable to access any form of debt resolution. It is not possible to quantify the impact of the introduction of DROs on the number of bankruptcy orders, nor to adjust the latter for it and, as a result, not possible to compile a consistent seasonally adjusted series for bankruptcy orders. Table 2 therefore only shows bankruptcy orders (and the derived "total individual insolvencies") on a seasonally adjusted basis up to the first quarter of 2009.

14. Table 2b records numbers of Income Payments Orders (IPOs) and Income Payments Agreements (IPAs) where the bankrupt makes regular payments from surplus income towards his/her debts for a period of time, either by court order or by agreement. The figures record numbers of IPOs/IPAs made in

each period, they do not, in general, relate to the date of the original bankruptcy order. Table 2b records a number of IPAs before Q2 2004 because the IPA provisions of the Enterprise Act 2002 (commenced on 1 April 2004) were applicable, upon commencement, to pre-commencement bankruptcies.

15. Insolvent individuals in Scotland (Table 4) are subject to **sequestration** (bankruptcy) or **protected trust deeds** under the Bankruptcy (Scotland) Act 1985 (as amended). This Act was amended by the Bankruptcy (Scotland) Act 1993. On April 1 2008 the Bankruptcy and Diligence etc. (Scotland) Act 2007 came into force making significant changes to some aspects of bankruptcy, debt relief and debt enforcement in Scotland. Most notably, as far as these statistics are concerned, it introduced a new route into bankruptcy for people with low income and low assets (LILA). The sequestration figures for Q2 2008 onwards include these new LILA cases; therefore trends in numbers of sequestrations before and after this date should be interpreted with care. Protected trust deeds are voluntary arrangements in Scotland, but although they fulfil much the same role as individual voluntary arrangements, there are important differences in the way they are set up and administered. Details of both sequestrations and protected trust deeds are found on the register of insolvencies, which is maintained by the Accountant in Bankruptcy. Further information about insolvency in Scotland can be found on the Accountant's website at www.aib.gov.uk. It should also be noted that from April 2008, personal insolvency statistics have been extracted from information published on the AiB website; whereas previously it was supplied on request, tailored to our publication requirements.

16. Insolvent individuals in Northern Ireland are dealt with under the Insolvency (Northern Ireland) Order 1989 and are recorded under Table 6. On 27 March 2006 the Insolvency (Northern Ireland) Order 2005 came into operation and implemented similar changes to bankruptcy procedures as the Enterprise Act 2002 introduced in England and Wales. Further information about insolvency in Northern Ireland can be found on their website at <http://www.detini.gov.uk/deti-insolvency-index.htm>.

17. Under the Insolvency Act 1986 and the Insolvent Partnerships Order and, in Northern Ireland, the Insolvency (Northern Ireland) Order 1989 and the Insolvent Partnerships Order (Northern Ireland) 1995, insolvent partnerships may be wound up as an unregistered company or administered following bankruptcy orders against the partners. Insolvent Partnerships can also enter administration or a voluntary arrangement.

18. Company insolvencies and bankruptcy orders (relating to the self-employed) in England and Wales broken down by industry are available from Q3 2007 according to the Standard Industrial Classification (SIC) 2003, bringing them into line with other official statistics. Industry breakdowns for compulsory liquidations and bankruptcies (only) are only available one quarter in arrears of the headline series. Figures according to the previously used Insolvency Trade Classification (ITC) are available up to Q3 2006, but information by industry is not available for the period between Q4 2006 to Q2 2007 (inclusive) on either classification. Additionally, the broad split of bankruptcy orders into self-employed and other individuals is available under Table 2a.

19. Company liquidations in Scotland are available from Q1 2007 based on the SIC2003 industry breakdown and these can be found in Tables 4a and 4b. Earlier data are available separately classified according to the Insolvency Trade Classification (ITC).

20. Information concerning insolvency legislation, policy evaluation and research in England and Wales may be obtained from the Insolvency Service website at www.insolvency.gov.uk.

National Statistics

'National Statistics' is the national standard for official statistics. The 'National Statistics' Quality Mark indicates that the statistics have been produced in accordance with a Code of Practice for Official Statistics. The Code of Practice requires the statistics to be produced, managed and disseminated to high professional standards. They must be well-explained and meet users' needs. The 'National Statistics' standard has statutory backing.

More information about the UK Statistics Authority and a range of National Statistics can be found at www.statistics.gov.uk



Press Enquiries

Insolvency Service Press Office
Lynne Nasti +44 (0)20 7674 6910
Ade Daramy +44 (0)20 7596 6187
Fax: +44 (0)20 7291 6731

Non Media Enquiries

Policy Directorate : Statistics
Gary Mills +44 (0)20 7637 6504
Rebekah Paul +44 (0)20 7637 6314
Margaret Sims +44 (0)20 7291 6858
E-Mail:
rebekah.paul@insolvency.gsi.gov.uk
margaret.sims@insolvency.gsi.gov.uk

Internet:

<http://www.insolvency.gov.uk/otherinformation/statistics/201002/uksa/index.htm>

Out of hours cover

Public Enquiries +44 (0)20 7215 5000
Textphone +44 (0)20 7215 6740
(for those with hearing impairment)

1. Company liquidations¹ England & Wales

Year	Not Seasonally Adjusted			Seasonally Adjusted			
	Total	Compulsory Liquidations	Creditors' Voluntary Liquidations ²	Total	Compulsory Liquidations	Creditors' Voluntary Liquidations ²	
2000	14,317	4,925	9,392				
2001	14,972	4,675	10,297				
2002	16,306	6,231	10,075				
2003	14,184	5,234	8,950				
2004	12,192	4,584	7,608				
2005	12,893	5,233	7,660				
2006	13,137	5,418	7,719				
2007	12,507	5,165	7,342				
2008	15,535	5,494	10,041				
p 2009	19,077	5,643	13,434				
2000	Q1	3,637	1,210	2,427	3,451	1,163	2,289
	Q2	3,370	1,300	2,070	3,379	1,220	2,159
	Q3	3,709	1,231	2,478	3,796	1,313	2,482
	Q4	3,601	1,184	2,417	3,691	1,229	2,462
2001	Q1	3,943	1,359	2,584	3,767	1,316	2,451
	Q2	3,684	1,348	2,336	3,704	1,267	2,437
	Q3	3,640	940	2,700	3,722	1,021	2,701
	Q4	3,705	1,028	2,677	3,779	1,070	2,708
2002	Q1	4,141	1,408	2,733	3,982	1,364	2,618
	Q2	4,066	1,679	2,387	4,037	1,556	2,481
	Q3	3,808	1,390	2,418	3,930	1,502	2,427
	Q4	4,291	1,754	2,537	4,357	1,808	2,549
2003	Q1	3,797	1,585	2,212	3,689	1,552	2,137
	Q2	3,767	1,470	2,297	3,737	1,378	2,359
	Q3	3,314	1,075	2,239	3,418	1,167	2,250
	Q4	3,306	1,104	2,202	3,341	1,137	2,204
2004	Q1	3,248	1,208	2,040	3,178	1,196	1,982
	Q2	3,108	1,197	1,911	3,069	1,125	1,945
	Q3	2,900	1,061	1,839	2,989	1,129	1,859
	Q4	2,936	1,118	1,818	2,956	1,134	1,822
2005	Q1	3,010	1,101	1,909	2,950	1,097	1,853
	Q2	3,407	1,422	1,985	3,355	1,345	2,010
	Q3	3,306	1,454	1,852	3,397	1,524	1,874
	Q4	3,170	1,256	1,914	3,191	1,267	1,924
2006	Q1	3,564	1,473	2,091	3,505	1,491	2,014
	Q2	3,235	1,263	1,972	3,179	1,199	1,979
	Q3	3,172	1,286	1,886	3,236	1,318	1,918
	Q4	3,166	1,396	1,770	3,217	1,409	1,808
2007	Q1	3,274	1,384	1,890	3,217	1,409	1,808
	Q2	3,191	1,399	1,792	3,138	1,334	1,804
	Q3	3,113	1,234	1,879	3,168	1,260	1,908
	Q4	2,929	1,148	1,781	2,984	1,163	1,822
2008	Q1	3,262	1,080	2,182	3,168	1,100	2,068
	Q2	3,689	1,410	2,279	3,635	1,340	2,295
	Q3	4,059	1,467	2,592	4,117	1,494	2,623
	Q4	4,525	1,537	2,988	4,615	1,560	3,055
2009	Q1	5,110	1,555	3,555	r 4,919	r 1,560	r 3,359
	Q2	5,059	1,520	3,539	r 4,944	r 1,442	r 3,502
	Q3	4,536	1,253	3,283	r 4,648	r 1,303	r 3,345
	p Q4	4,372	1,315	3,057	4,566	1,338	3,228

Percentage change, latest quarter on previous quarter

2009	Q4	-3.6	4.9	-6.9	-1.7	2.7	-3.5
------	----	------	-----	------	------	-----	------

Percentage change, latest quarter on corresponding quarter of previous year

2009	Q4	-3.4	-14.4	2.3	-1.1	-14.2	5.7
------	----	------	-------	-----	------	-------	-----

p Provisional.

r Revised, reflecting routine updates to the seasonally adjusted series.

¹ Including partnerships.

² Where the Creditors' Voluntary Liquidation is the first insolvency procedure entered into (see "Notes to Editors" paragraph 8).

1a. Compulsory liquidations by Industry (SIC 2003) ^{1,4}

England & Wales

not seasonally adjusted

Section	Sub-section	2 digit	3 digit	2007				2008				2009			
				Q3	Q4	Q1	Q2	Q3	Q4	Q1	Q2	Q3	Q4		
Section A				7	4	13	5	7	6	11	8	7	-	-	
Section B				0	3	0	3	4	1	1	1	1	-	-	
Section C				2	2	5	2	2	3	2	0	1	-	-	
Section D				2	9	2	2	5	7	3	3	1	-	-	
	AGRICULTURE, HUNTING AND FORESTRY			7	4	13	5	7	6	11	8	7	-	-	
	FISHING			0	3	0	3	4	1	1	1	1	-	-	
	MINING AND QUARRYING			2	2	5	2	2	3	2	0	1	-	-	
	MANUFACTURING			2	9	2	2	5	7	3	3	1	-	-	
	Food products, beverages and tobacco			7	5	6	3	4	6	6	6	9	-	-	
	Textiles and textile products			6	6	11	10	10	10	11	5	9	-	-	
	Leather and leather products			5	5	10	7	11	10	9	4	9	-	-	
	Chemical and allied products			9	8	7	11	8	9	9	4	9	-	-	
	Pulp, paper and paper products publishing and printing			1	1	0	0	0	0	0	2	1	-	-	
	Chemicals, chemical products and nuclear fuel			1	1	1	1	3	4	4	0	3	-	-	
	Rubber and plastic products			1	6	5	4	3	3	4	6	5	-	-	
	Other non-metallic mineral products			6	3	2	5	2	5	9	5	8	-	-	
	Metals and metal products			15	15	16	18	18	15	4	4	3	-	-	
	Machinery and equipment (not elsewhere classified)			5	8	0	6	4	5	7	3	6	-	-	
	Electrical and optical equipment			3	4	3	3	1	3	2	4	4	-	-	
	Transport equipment			10	8	6	10	6	6	12	7	13	-	-	
	Not elsewhere classified			63	80	61	84	69	75	87	83	79	-	-	
	Total			202	197	209	263	292	295	343	381	293	-	-	
Section E				7	6	9	11	9	14	11	19	9	-	-	
Section F				19	23	23	28	35	29	39	47	35	-	-	
	CONSTRUCTION			19	23	23	28	35	29	39	47	35	-	-	
	451 Site preparator			61	62	63	61	60	116	122	123	111	-	-	
	452 Building of complete constructions or parts thereof, civil engineer			44	50	40	53	61	50	77	75	71	-	-	
	453 Building of complete constructions or parts thereof, mechanical engineer			3	4	3	6	8	6	8	12	2	-	-	
	454 Building of complete constructions or parts thereof, electrical engineer			3	4	3	6	8	6	8	12	2	-	-	
	455 Renting of construction or demolition equipment with operator			202	197	209	263	292	295	343	381	293	-	-	
Section G				20	23	22	17	19	27	20	25	28	-	-	
	WHOLESALE AND RETAIL TRADE; REPAIR OF MOTOR VEHICLES, MOTOR CYCLES AND PERSONAL AND HOUSEHOLD GOODS			20	23	22	17	19	27	20	25	28	-	-	
	Sale, maintenance and repair of motor vehicles and motorcycles; retail sale of automotive fu			92	69	53	67	64	65	105	66	67	-	-	
	Wholesale trade and commission trade, except of motor vehicles and motorcycle			178	122	179	191	165	191	208	195	171	-	-	
	Retail trade, except of motor vehicles and motorcycles; repair of personal and household goods			20	23	22	17	19	27	20	25	28	-	-	
	Total			178	122	179	191	165	191	208	195	171	-	-	
Section H				6	6	7	12	10	11	11	4	9	-	-	
	HOTELS AND RESTAURANTS			6	6	7	12	10	11	11	4	9	-	-	
	551 Hotels			6	6	7	12	10	11	11	4	9	-	-	
	553 Restaurants			0	0	0	0	0	0	0	0	0	-	-	
	554 Bars			0	0	0	0	0	0	0	0	0	-	-	
	Other			0	0	0	0	0	0	0	0	0	-	-	
	Total			6	6	7	12	10	11	11	4	9	-	-	
Section I				21	35	37	29	31	38	28	39	32	-	-	
	TRANSPORT, STORAGE AND COMMUNICATION			21	35	37	29	31	38	28	39	32	-	-	
	Land transport, transport via pipeline			1	3	2	1	1	3	3	1	3	-	-	
	Water transport			1	1	1	1	1	1	1	1	1	-	-	
	Other			19	31	34	27	29	34	24	27	21	-	-	
	Supporting and auxiliary transport activities; activities of travel agents			23	23	25	24	21	35	27	20	22	-	-	
	Post and telecommunications			36	31	19	39	39	33	24	30	16	-	-	
	Total			84	92	83	92	94	110	86	92	76	-	-	
Section J				2	3	2	2	2	1	2	4	0	-	-	
	FINANCIAL INTERMEDIATION			2	3	2	2	2	1	2	4	0	-	-	
	Insurance and pension funding, except compulsory social security			30	36	23	26	37	34	48	62	27	-	-	
	Other			32	39	25	28	42	35	50	66	27	-	-	
	Total			32	39	25	28	42	35	50	66	27	-	-	
Section K				41	26	39	56	63	71	71	63	36	-	-	
	REAL ESTATE, RENTING AND BUSINESS ACTIVITIES			41	26	39	56	63	71	71	63	36	-	-	
	Real estate activities			2	0	2	0	3	0	2	0	2	-	-	
	Renting of machinery and equipment without operator and of personal and household goods			1	1	0	0	0	2	0	0	0	-	-	
	Research and development			1	0	0	0	0	0	1	2	1	-	-	
	Other business activities			52	60	69	79	89	70	67	78	78	-	-	
	Total			107	102	122	159	186	162	181	160	132	-	-	
Section L				4	3	1	3	6	3	2	6	5	-	-	
	PUBLIC ADMINISTRATION AND DEFENCE; COMPULSORY SOCIAL SECURITY			4	3	1	3	6	3	2	6	5	-	-	
Section M				16	10	12	14	5	15	15	14	12	-	-	
	EDUCATION			16	10	12	14	5	15	15	14	12	-	-	
Section N				10	17	13	14	14	9	16	17	12	-	-	
	HEALTH AND SOCIAL WORK			10	17	13	14	14	9	16	17	12	-	-	
Section O				108	80	84	82	130	113	108	110	73	-	-	
	OTHER COMMUNITY, SOCIAL & PERSONAL SERVICE ACTIVITIES			108	80	84	82	130	113	108	110	73	-	-	
Section P				2	0	1	0	1	1	2	0	1	-	-	
	PRIVATE HOUSEHOLDS EMPLOYING STAFF AND UNDIFFERENTIATED PRODUCTION ACTIVITIES OF HOUSEHOLDS FOR OWN USE			2	0	1	0	1	1	2	0	1	-	-	
Section Q				1	4	3	2	0	2	1	3	1	-	-	
	EXTRA-TERRITORIAL ORGANISATIONS AND BODIES			1	4	3	2	0	2	1	3	1	-	-	
ALL OTHERS ⁵				355	362	332	436	454	411	378	380	315	-	-	
Total				1,271	1,260	1,227	1,478	1,600	1,635	1,589	1,598	1,290	-	-	

¹ Not available

² The Standard Industrial Classification (SIC 2003) definitions can be found at [http://www.statistics.gov.uk/methods_quality/hsic2003uk/SIC_V41\(2003\).pdf](http://www.statistics.gov.uk/methods_quality/hsic2003uk/SIC_V41(2003).pdf)

³ Unknown SIC

⁴ An industry breakdown according to the previously used Inactivity Trade Classifications (ITC) is available up to Q3 2008 at <http://www.inactivity.gov.uk/information/statistics/2007/2008/itc.htm>. The period from Q4 2008 to Q2 2007 is not available broken down by industry.

⁵ Totals for compulsory liquidations here are not the same as the headline figures under 'Total'. This is because the industrial breakdown has been compiled from a specially selected set of firms from the two databases, whereas the headline figures are produced monthly using a different reporting system.

1b. Creditors' Voluntary Liquidations by Industry (SIC 2003)^{1,3}

England & Wales

not seasonally adjusted

Section	Sub-section	2007			2008			2009			
		Q3	Q4	Q1	Q2	Q3	Q4	Q1	Q2	Q3	Q4 ^p
Section A	AGRICULTURE, HUNTING AND FORESTRY	3	5	7	11	9	7	12	12	12	12
Section B	FISHING	0	0	0	0	1	0	1	0	0	0
Section C	MINING AND QUARRYING	0	1	0	1	3	6	1	3	4	3
Section D	MANUFACTURING	14	7	10	13	16	18	11	17	11	14
DA	Food products, beverages and tobacco	23	19	17	26	29	26	28	35	24	23
DB	Textiles and textile products	0	2	0	1	2	1	3	1	3	2
DC	Leather and leather products	18	13	11	24	21	25	32	36	14	23
DD	Wood and wood products	51	52	54	47	69	62	63	85	89	68
DE	Pulp, paper and paper products publishing and printing	0	0	1	0	0	0	0	0	0	0
DF	Coke, refined petroleum products and nuclear fuel	4	1	6	1	10	6	4	4	5	6
DG	Chemicals, chemical products and man-made fibres	5	21	18	18	13	10	27	28	13	14
DH	Rubber and plastic products	9	12	9	10	13	13	16	12	12	11
DI	Other non-metallic mineral products	53	32	51	37	64	58	108	124	95	117
DJ	Basic metals and fabricated metal products	12	12	12	14	9	15	22	29	28	18
DK	Machinery and equipment not elsewhere classified	20	10	16	17	18	19	28	24	21	15
DL	Electrical and optical equipment	7	5	6	8	8	16	13	8	13	6
DM	Transport equipment	46	36	55	51	42	58	86	77	80	55
DN	Not elsewhere classified	252	222	286	267	314	327	441	480	409	372
	Total	1	3	2	0	2	4	2	6	2	1
Section E	ELECTRICITY, GAS AND WATER SUPPLY										
Section F	CONSTRUCTION	7	8	3	7	5	4	13	15	13	8
451	Site preparation	118	143	171	164	206	255	291	301	261	253
452	Building of complete constructions or parts thereof; civil engineering	76	77	101	117	123	128	193	177	162	167
453	Building installation	68	72	69	61	89	101	144	127	175	113
454	Building completion	2	3	7	7	7	7	8	9	7	8
455	Renting of construction or demolition equipment with operator	270	303	346	312	430	485	649	628	558	549
	Total	44	52	58	57	67	96	92	67	69	78
Section G	WHOLESALE AND RETAIL TRADE; REPAIR OF MOTOR VEHICLES, MOTOR CYCLES AND PERSONAL AND HOUSEHOLD GOODS	113	103	133	148	141	170	234	227	209	169
50	Sale, maintenance and repair of motor vehicles and motorcycles; retail sale of automotive fuel	143	143	190	209	213	232	305	258	214	194
51	Wholesale trade and commission trade, except of motor vehicles and motorcycles	300	298	381	414	421	488	611	552	482	441
52	Retail trade, except of motor vehicles and motorcycles; repair of personal and household goods										
	Total	10	8	3	11	13	19	14	20	16	16
Section H	HOTELS AND RESTAURANTS	68	79	55	80	98	96	112	105	92	105
551	Hotels	26	30	40	47	31	45	64	50	54	46
553	Restaurants	12	18	14	21	17	21	24	20	15	30
554	Bars	116	135	112	159	159	181	214	195	177	197
	Total	43	35	54	63	71	88	83	72	74	74
Section I	TRANSPORT, STORAGE AND COMMUNICATION	1	0	2	0	1	9	2	0	3	1
60	Land transport; transport via pipelines	20	20	19	20	31	35	42	28	25	29
61	Water transport	32	22	23	28	27	27	22	31	21	29
62	Air transport	96	79	101	102	124	145	155	145	121	135
63	Supporting and auxiliary transport activities; activities of travel agencies										
64	Post and telecommunications										
	Total	2	7	4	4	5	7	4	7	4	4
Section J	FINANCIAL INTERMEDIATION	16	8	16	22	38	47	38	45	39	35
66	Insurance and pension funding, except compulsory social security	18	15	20	26	43	54	42	52	43	39
	Total	45	40	51	63	106	116	117	127	106	86
Section K	REAL ESTATE, RENTING AND BUSINESS ACTIVITIES	9	9	8	17	6	12	17	27	14	15
70	Real estate activities	76	69	82	65	78	90	91	116	126	134
71	Renting of machinery and equipment without operator and of personal and household goods	2	4	5	4	4	4	5	2	6	6
72	Computer and related activities	38	38	46	43	51	61	70	76	71	68
73	Research and development	531	458	613	622	707	835	981	1,039	1,024	922
74	Other business activities										
	Total	5	2	2	4	1	5	3	4	5	5
Section L	PUBLIC ADMINISTRATION AND DEFENCE; COMPULSORY SOCIAL SECURITY	12	11	13	15	17	11	15	15	22	18
Section M	EDUCATION	14	14	15	23	18	18	19	30	22	18
Section N	HEALTH AND SOCIAL WORK	112	107	126	115	145	152	188	164	190	173
Section O	OTHER COMMUNITY, SOCIAL & PERSONAL SERVICE ACTIVITIES	1	3	2	2	1	1	3	4	1	5
Section P	PRIVATE HOUSEHOLDS EMPLOYING STAFF AND UNDIFFERENTIATED PRODUCTION ACTIVITIES OF HOUSEHOLDS FOR OWN USE	0	0	2	0	1	0	0	0	0	1
Section Q	EXTRA-TERRITORIAL ORGANISATIONS AND BODIES	138	125	174	166	196	249	203	210	201	165
ALL OTHER ²		1,879	1,781	2,182	2,279	2,592	2,988	3,555	3,539	3,283	3,077
Total		1,879	1,781	2,182	2,279	2,592	2,988	3,555	3,539	3,283	3,077

^p Provisional.

¹ The Standard Industrial Classification (SIC 2003) definitions can be found at [http://www.statistics.gov.uk/methods_quality/sic/downloads/UK_SIC_V041\(2003\).pdf](http://www.statistics.gov.uk/methods_quality/sic/downloads/UK_SIC_V041(2003).pdf)

² Including unknown or invalid SIC codes and non-trading or dormant companies

³ Where the Creditors' Voluntary Liquidation is the first insolvency procedure entered into (see "Notes to Editors" paragraph 5).

2. Individual insolvencies England & Wales

Year		Not Seasonally Adjusted			Seasonally Adjusted ³			
		Total	Bankruptcy Orders	Debt Relief Orders ¹	Individual Voluntary Arrangements ²	Total	Bankruptcy Orders	Individual Voluntary Arrangements ²
2000		29,528	21,550	:	7,978			
2001		29,775	23,477	:	6,298			
2002		30,587	24,292	:	6,295			
2003		35,604	28,021	:	7,583			
2004		46,651	35,898	:	10,752			
2005		67,584	47,291	:	20,293			
2006		107,288	62,956	:	44,332			
2007		106,645	64,480	:	42,165			
2008		106,544	67,428	:	39,116			
p 2009		134,142	74,670	11,831 ¹	47,641			
2000	Q1	7,837	5,667	:	2,170	7,639	5,316	2,323
	Q2	7,532	5,414	:	2,118	7,418	5,318	2,100
	Q3	7,316	5,451	:	1,865	7,208	5,440	1,768
	Q4	6,843	5,018	:	1,825	7,264	5,476	1,788
2001	Q1	7,750	6,078	:	1,672	7,496	5,707	1,788
	Q2	7,714	6,115	:	1,599	7,576	5,995	1,581
	Q3	7,434	5,817	:	1,617	7,348	5,808	1,540
	Q4	6,877	5,467	:	1,410	7,356	5,967	1,389
2002	Q1	7,411	6,027	:	1,384	7,511	6,019	1,492
	Q2	7,861	6,269	:	1,592	7,343	5,769	1,575
	Q3	7,892	6,249	:	1,643	7,815	6,246	1,569
	Q4	7,423	5,747	:	1,676	7,918	6,259	1,659
2003	Q1	8,426	6,912	:	1,514	8,145	6,502	1,643
	Q2	8,889	6,948	:	1,941	8,684	6,764	1,920
	Q3	9,291	7,221	:	2,070	9,202	7,223	1,979
	Q4	8,998	6,940	:	2,058	9,573	7,532	2,041
2004	Q1	10,665	8,524	:	2,141	10,330	8,008	2,322
	Q2	11,536	9,060	:	2,475	11,250	8,810	2,440
	Q3	12,227	9,315	:	2,912	12,122	9,342	2,779
	Q4	12,223	8,999	:	3,224	12,948	9,737	3,211
2005	Q1	13,190	10,188	:	3,002	13,424	10,137	3,286
	Q2	16,873	12,338	:	4,535	15,805	11,318	4,487
	Q3	18,010	12,256	:	5,754	17,857	12,330	5,528
	Q4	19,511	12,509	:	7,002	20,498	13,506	6,992
2006	Q1	23,939	16,283	:	7,656	23,623	15,201	8,422
	Q2	26,722	15,489	:	11,233	26,398	15,276	11,122
	Q3	28,083	15,418	:	12,665	27,780	15,641	12,139
	Q4	28,544	15,766	:	12,778	29,487	16,837	12,650
2007	Q1	29,236	17,937	:	11,299	29,077	16,781	12,296
	Q2	27,327	16,489	:	10,838	27,045	16,451	10,594
	Q3	26,252	15,600	:	10,652	25,993	15,908	10,085
	Q4	23,830	14,454	:	9,376	24,530	15,340	9,190
2008	Q1	24,619	15,814	:	8,805	25,031	15,452	9,579
	Q2	25,966	16,373	:	9,593	24,998	15,568	9,430
	Q3	27,488	17,237	:	10,251	27,214	17,447	9,767
	Q4	28,471	18,004	:	10,467	29,301	18,961	10,341
2009	Q1	30,253	20,446	:	9,807	29,824	19,062	r 10,762
	Q2	33,073	18,870	1,978	12,225	:	:	r 11,953
	Q3	35,242	18,347	4,505	12,390	:	:	r 11,882
	p Q4	35,574	17,007	5,348	13,219	:	:	13,044

Percentage change, latest quarter on previous quarter

2009	Q4	0.9	-7.3	18.7	6.7	:	:	9.8
-------------	----	-----	------	------	-----	---	---	-----

Percentage change, latest quarter on corresponding quarter of previous year

2009	Q4	24.9	-5.5	:	26.3	:	:	26.1
-------------	----	------	------	---	------	---	---	------

p Provisional.

: Not applicable

r Revised, reflecting routine updates to the seasonally adjusted series.

¹ Debt Relief Orders (DROs) came into effect on 6 April 2009 as an alternative route into personal insolvency. See "Notes to Editors" paragraph 12.

² Including Deeds of Arrangement

³ The series for bankruptcy orders is only seasonally adjusted up to Q1 2009; see "Notes to Editors" paragraph 13.

2a. Bankruptcy orders by petition type and trading status England & Wales

not seasonally adjusted

Year	Bankruptcy Orders	Debtor's petitions		Creditor's petitions		Bankruptcy Orders	Self-employed ¹		Other individuals ¹		
		count	%	count	%		count	%	count	%	
2000	21,550	13,312	61.8	8,238	38.2	21,550	9,952	46.2	11,598	53.8	
2001	23,477	15,514	66.1	7,963	33.9	23,477	9,839	41.9	13,638	58.1	
2002	24,292	16,955	69.8	7,337	30.2	24,292	8,854	36.4	15,438	63.6	
2003	28,021	19,882	71.0	8,139	29.0	28,021	9,139	32.6	18,882	67.4	
2004	35,898	27,872	77.6	8,026	22.4	35,898	9,564	26.6	26,334	73.4	
2005	47,291	38,131	80.6	9,160	19.4	47,291	10,839	22.9	36,452	77.1	
2006	62,956	53,038	84.2	9,918	15.8	62,956	10,894	17.3	52,062	82.7	
2007	64,480	54,433	84.4	10,047	15.6	64,480	7,058	10.9	57,422	89.1	
2008	67,428	56,600	83.9	10,828	16.1	67,428	8,183	12.1	59,245	87.9	
p 2009	74,670	63,804	85.4	10,866	14.6	74,670	
2000	Q1	5,667	3,554	62.7	2,113	37.3	5,667	2,571	45.4	3,096	54.6
	Q2	5,414	3,276	60.5	2,138	39.5	5,414	2,519	46.5	2,895	53.5
	Q3	5,451	3,292	60.4	2,159	39.6	5,451	2,518	46.2	2,933	53.8
	Q4	5,018	3,190	63.6	1,828	36.4	5,018	2,344	46.7	2,674	53.3
2001	Q1	6,078	3,987	65.6	2,091	34.4	6,078	2,666	43.9	3,412	56.1
	Q2	6,115	3,890	63.6	2,225	36.4	6,115	2,609	42.7	3,506	57.3
	Q3	5,817	3,889	66.9	1,928	33.1	5,817	2,414	41.5	3,403	58.5
	Q4	5,467	3,748	68.6	1,719	31.4	5,467	2,150	39.3	3,317	60.7
2002	Q1	6,027	4,223	70.1	1,804	29.9	6,027	2,261	37.5	3,766	62.5
	Q2	6,269	4,333	69.1	1,936	30.9	6,269	2,235	35.7	4,034	64.3
	Q3	6,249	4,374	70.0	1,875	30.0	6,249	2,244	35.9	4,005	64.1
	Q4	5,747	4,025	70.0	1,722	30.0	5,747	2,114	36.8	3,633	63.2
2003	Q1	6,912	4,892	70.8	2,020	29.2	6,912	2,468	35.7	4,444	64.3
	Q2	6,948	4,851	69.8	2,097	30.2	6,948	2,267	32.6	4,681	67.4
	Q3	7,221	5,148	71.3	2,073	28.7	7,221	2,296	31.8	4,925	68.2
	Q4	6,940	4,991	71.9	1,949	28.1	6,940	2,108	30.4	4,832	69.6
2004	Q1	8,524	6,472	75.9	2,052	24.1	8,524	2,437	28.6	6,087	71.4
	Q2	9,060	7,028	77.6	2,032	22.4	9,060	2,455	27.1	6,605	72.9
	Q3	9,315	7,236	77.7	2,079	22.3	9,315	2,300	24.7	7,015	75.3
	Q4	8,999	7,136	79.3	1,863	20.7	8,999	2,372	26.4	6,627	73.6
2005	Q1	10,188	8,219	80.7	1,969	19.3	10,188	2,446	24.0	7,742	76.0
	Q2	12,338	9,840	79.8	2,498	20.2	12,338	2,835	23.0	9,503	77.0
	Q3	12,256	9,902	80.8	2,354	19.2	12,256	2,850	23.3	9,406	76.7
	Q4	12,509	10,170	81.3	2,339	18.7	12,509	2,708	21.6	9,801	78.4
2006	Q1	16,283	13,492	82.9	2,791	17.1	16,283	3,150	19.3	13,133	80.7
	Q2	15,489	13,086	84.5	2,403	15.5	15,489	2,898	18.7	12,591	81.3
	Q3	15,418	13,036	84.6	2,382	15.4	15,418	2,990	19.4	12,428	80.6
	Q4	15,766	13,424	85.1	2,342	14.9	15,766	1,856	11.8	13,910	88.2
2007	Q1	17,937	15,356	85.6	2,581	14.4	17,937	1,981	11.0	15,956	89.0
	Q2	16,489	13,923	84.4	2,566	15.6	16,489	1,767	10.7	14,722	89.3
	Q3	15,600	13,173	84.4	2,427	15.6	15,600	1,660	10.6	13,940	89.4
	Q4	14,454	11,981	82.9	2,473	17.1	14,454	1,650	11.4	12,804	88.6
2008	Q1	15,814	13,275	83.9	2,539	16.1	15,814	1,915	12.1	13,899	87.9
	Q2	16,373	13,754	84.0	2,619	16.0	16,373	1,828	11.2	14,545	88.8
	Q3	17,237	14,369	83.4	2,868	16.6	17,237	2,115	12.3	15,122	87.7
	Q4	18,004	15,202	84.4	2,802	15.6	18,004	2,325	12.9	15,679	87.1
2009	Q1	20,446	17,606	86.1	2,840	13.9	20,446	2,798	13.7	17,648	86.3
	Q2	18,870	16,265	86.2	2,605	13.8	18,870	2,470	13.1	16,400	86.9
	Q3	18,347	15,616	85.1	2,731	14.9	18,347	2,280	12.4	16,067	87.6
	p Q4	17,007	14,317	84.2	2,690	15.8	17,007

p Provisional.

.. Not yet available

¹ Changes have been made to the part of the database used to capture information on trading status and industry codes. From 2006 Q4, "self-employed" includes the categories "self-employed"; "trader but failure not as a result of trading" and "trading partnership" and "other individuals" includes "non-trading"; "non-surrender" and "unknown". The breakdown by trading status from Q4 2006 should not therefore be considered to be entirely consistent with that for the earlier period.

2b. Income payments¹

England & Wales

not seasonally adjusted

Year	Total	Income Payments Orders	Income Payments Agreements
2000	2,346	2,346	:
2001	2,396	2,396	:
2002	2,322	2,322	:
2003	2,812	2,720	92
2004	6,238	1,238	5,000
2005	9,102	69	9,033
2006	11,990	86	11,904
2007	13,332	77	13,255
2008	13,265	67	13,198
p 2009	14,777	60	14,717
2000	Q1 486	486	:
	Q2 540	540	:
	Q3 652	652	:
	Q4 668	668	:
2001	Q1 565	565	:
	Q2 458	458	:
	Q3 710	710	:
	Q4 663	663	:
2002	Q1 565	565	:
	Q2 458	458	:
	Q3 630	630	:
	Q4 669	669	:
2003	Q1 464	462	2
	Q2 444	432	12
	Q3 917	885	32
	Q4 987	941	46
2004	Q1 783	709	74
	Q2 1,257	413	844
	Q3 2,140	90	2,050
	Q4 2,058	26	2,032
2005	Q1 1,430	25	1,405
	Q2 1,882	11	1,871
	Q3 2,900	12	2,888
	Q4 2,890	21	2,869
2006	Q1 1,973	29	1,944
	Q2 2,532	21	2,511
	Q3 3,798	20	3,778
	Q4 3,687	16	3,671
2007	Q1 2,483	23	2,460
	Q2 2,895	27	2,868
	Q3 4,244	11	4,233
	Q4 3,710	16	3,694
2008	Q1 2,169	18	2,151
	Q2 2,656	12	2,644
	Q3 3,923	15	3,908
	Q4 4,517	22	4,495
2009	Q1 2,351	19	2,332
	Q2 2,912	11	2,901
	Q3 4,763	19	4,744
	p Q4 4,751	11	4,740

p Provisional

: Not applicable

¹ See "Notes to Editors" paragraph 14.

2C. Trading-related bankruptcies by industry (SIC 2003)^{1,4}

England & Wales

Section	Sub-section	3 digit	2 digit	2007 ²				2008				2009				
				Q3	Q4	Q1	Q2	Q3	Q4	Q1	Q2	Q3	Q4	Q1	Q2	Q3
Section A	AGRICULTURE, HUNTING AND FORESTRY			43	35	31	39	33	44	59	57	47
Section B	FISHING			3	5	4	2	7	4	9	5	2
Section C	MINING AND QUARRYING			0	5	1	0	1	0	1	1	2
Section D	MANUFACTURING			0	0	2	1	1	2	4	3	2
	DA Food products, beverages and tobacco			2	7	7	6	5	8	2	7	0
	DB Textiles and textile products			0	0	0	0	0	0	0	0	1
	DC Leather and leather products			3	8	12	8	15	10	16	8	10
	DD Wood and wood products			4	5	4	5	4	5	7	8	8
	DE Pulp, paper and paper products publishing and printing			0	0	0	0	1	0	0	0	0
	DF Coke, refined petroleum products and nuclear fuel			1	0	0	0	1	0	0	0	0
	DG Chemicals, chemical products and man-made fibres			2	1	1	1	2	1	0	1	2
	DH Rubber and plastic products			3	6	0	2	3	1	8	4	1
	DI Other non-metallic mineral products			2	3	2	2	3	2	10	14	7
	DJ Basic metals and fabricated metal products			3	2	2	2	2	2	10	14	7
	DK Machinery and equipment not elsewhere classified			1	1	0	1	3	2	1	3	2
	DL Electrical and optical equipment			0	1	4	2	0	2	2	6	4
	DM Transport equipment			7	6	9	4	5	3	13	8	4
	DN Not elsewhere classified			33	40	50	35	53	47	65	63	47
	Total			29	16	36	21	28	19	39	40	42
Section E	ELECTRICITY, GAS AND WATER SUPPLY		
Section F	CONSTRUCTION			59	51	59	65	66	61	97	71	79
	451 Site preparation			73	72	99	80	76	100	136	109	99
	452 Building of complete constructions or parts thereof; civil engineering			111	96	120	106	110	113	156	156	146
	453 Building installation			53	57	69	78	203	241	375	309	290
	454 Building completion			4	2	4	4	4	4	0	5	4
	455 Renning of construction or demolition equipment with operator			379	376	470	429	456	525	704	649	616
	Total			43	57	52	45	57	67	71	46	69
Section G	WHOLESALE AND RETAIL TRADE; REPAIR OF MOTOR VEHICLES, MOTOR CYCLES AND PERSONAL AND HOUSEHOLD GOODS			49	56	59	65	77	63	71	65	74
	50 Sale, maintenance and repair of motor vehicles and motorcycles; retail sale of automotive fu			204	180	215	194	241	264	319	259	216
	51 Wholesale trade and commission trade, except of motor vehicles and motorcycle			295	293	326	304	375	394	461	370	358
	52 Retail trade, except of motor vehicles and motorcycles; repair of personal and household good		
	Total			7	11	14	6	15	14	16	17	11
Section H	HOTELS AND RESTAURANTS			39	36	38	40	45	51	73	63	49
	551 Hotels			96	124	139	167	159	192	160	120	131
	553 Restaurants			21	16	17	19	32	32	24	40	22
	554 Bars			163	167	208	232	251	289	273	240	212
	Total			165	135	179	166	201	204	260	210	163
Section I	TRANSPORT, STORAGE AND COMMUNICATION			0	1	1	3	0	0	1	1	1
	60 Land transport; transport via pipelines			0	0	0	0	0	0	0	0	0
	61 Water transport			0	0	0	0	0	0	0	0	0
	62 Air transport			0	0	0	0	0	0	0	0	0
	63 Supporting and auxiliary transport activities; activities of travel agency			44	43	52	52	56	74	58	67	61
	64 Post and telecommunications			30	32	47	42	61	39	56	50	49
	Total			229	213	279	284	319	317	377	330	275
Section J	FINANCIAL INTERMEDIATION			3	0	0	0	4	2	0	5	2
	Insurance and pension funding, except compulsory social security			29	37	26	36	34	40	53	49	49
	Other			32	37	26	36	38	42	53	54	51
	Total			19	11	17	30	47	61	61	50	49
Section K	REAL ESTATE, RENTING AND BUSINESS ACTIVITIES			4	0	1	2	1	1	2	1	0
	Real estate activities			9	8	7	6	10	13	10	12	8
	Renting of machinery and equipment without operator and of personal and household goo			0	0	0	0	0	0	0	0	0
	Computer and related activities			45	46	64	42	77	81	64	67	67
	Research and development			77	65	89	80	135	156	140	143	124
	Other business activities			3	2	2	3	4	6	7	3	6
	Total			20	17	25	14	24	24	31	31	23
Section L	PUBLIC ADMINISTRATION AND DEFENCE; COMPULSORY SOCIAL SECURITY			30	47	34	41	39	50	64	55	56
Section M	EDUCATION			283	283	309	302	326	372	474	407	398
Section N	HEALTH AND SOCIAL WORK			2	6	3	5	3	6	11	4	3
Section O	OTHER COMMUNITY, SOCIAL & PERSONAL SERVICE ACTIVITIES			0	3	2	0	3	1	0	4	1
Section P	PRIVATE HOUSEHOLDS EMPLOYING STAFF AND UNDIFFERENTIATED PRODUCTION ACTIVITIES OF HOUSEHOLDS FOR OWN USE			21	10	21	19	17	28	30	14	17
Section Q	EXTRA-TERRITORIAL ORGANISATIONS AND BODIES		
ALL OTHERS ⁵				1,642	1,642	1,616	1,626	2,112	2,325	2,798	2,470	2,280
Total				1,642	1,642	1,616	1,626	2,112	2,325	2,798	2,470	2,280

.. Not yet available

¹ The Standard Industrial Classification (SIC 2003) definitions can be found at http://www.statistics.gov.uk/methods_quality/sic2003/sic2003.pdf

² Unknown SIC

³ An industry breakdown according to the previously used Industry Trade Classifications (ITC) is available up to Q3 2006 at <http://www.insolvency.gov.uk/cmr/information/statistics/007/02a16c16.htm>. The period from Q4 2006 to Q3 2007 is not available broken down by industry.

⁴ Data are from the Insolvency Statistics (IS) database. The period from Q4 2006 to Q3 2007 is not available broken down by industry. ⁵ Data are from the Insolvency Statistics (IS) database. The period from Q4 2006 to Q3 2007 is not available broken down by industry. ⁶ Data are from the Insolvency Statistics (IS) database. The period from Q4 2006 to Q3 2007 is not available broken down by industry. ⁷ Data are from the Insolvency Statistics (IS) database. The period from Q4 2006 to Q3 2007 is not available broken down by industry. ⁸ Data are from the Insolvency Statistics (IS) database. The period from Q4 2006 to Q3 2007 is not available broken down by industry. ⁹ Data are from the Insolvency Statistics (IS) database. The period from Q4 2006 to Q3 2007 is not available broken down by industry. ¹⁰ Data are from the Insolvency Statistics (IS) database. The period from Q4 2006 to Q3 2007 is not available broken down by industry. ¹¹ Data are from the Insolvency Statistics (IS) database. The period from Q4 2006 to Q3 2007 is not available broken down by industry. ¹² Data are from the Insolvency Statistics (IS) database. The period from Q4 2006 to Q3 2007 is not available broken down by industry. ¹³ Data are from the Insolvency Statistics (IS) database. The period from Q4 2006 to Q3 2007 is not available broken down by industry. ¹⁴ Data are from the Insolvency Statistics (IS) database. The period from Q4 2006 to Q3 2007 is not available broken down by industry. ¹⁵ Data are from the Insolvency Statistics (IS) database. The period from Q4 2006 to Q3 2007 is not available broken down by industry. ¹⁶ Data are from the Insolvency Statistics (IS) database. The period from Q4 2006 to Q3 2007 is not available broken down by industry. ¹⁷ Data are from the Insolvency Statistics (IS) database. The period from Q4 2006 to Q3 2007 is not available broken down by industry. ¹⁸ Data are from the Insolvency Statistics (IS) database. The period from Q4 2006 to Q3 2007 is not available broken down by industry. ¹⁹ Data are from the Insolvency Statistics (IS) database. The period from Q4 2006 to Q3 2007 is not available broken down by industry. ²⁰ Data are from the Insolvency Statistics (IS) database. The period from Q4 2006 to Q3 2007 is not available broken down by industry. ²¹ Data are from the Insolvency Statistics (IS) database. The period from Q4 2006 to Q3 2007 is not available broken down by industry. ²² Data are from the Insolvency Statistics (IS) database. The period from Q4 2006 to Q3 2007 is not available broken down by industry. ²³ Data are from the Insolvency Statistics (IS) database. The period from Q4 2006 to Q3 2007 is not available broken down by industry. ²⁴ Data are from the Insolvency Statistics (IS) database. The period from Q4 2006 to Q3 2007 is not available broken down by industry. ²⁵ Data are from the Insolvency Statistics (IS) database. The period from Q4 2006 to Q3 2007 is not available broken down by industry. ²⁶ Data are from the Insolvency Statistics (IS) database. The period from Q4 2006 to Q3 2007 is not available broken down by industry. ²⁷ Data are from the Insolvency Statistics (IS) database. The period from Q4 2006 to Q3 2007 is not available broken down by industry. ²⁸ Data are from the Insolvency Statistics (IS) database. The period from Q4 2006 to Q3 2007 is not available broken down by industry. ²⁹ Data are from the Insolvency Statistics (IS) database. The period from Q4 2006 to Q3 2007 is not available broken down by industry. ³⁰ Data are from the Insolvency Statistics (IS) database. The period from Q4 2006 to Q3 2007 is not available broken down by industry. ³¹ Data are from the Insolvency Statistics (IS) database. The period from Q4 2006 to Q3 2007 is not available broken down by industry. ³² Data are from the Insolvency Statistics (IS) database. The period from Q4 2006 to Q3 2007 is not available broken down by industry. ³³ Data are from the Insolvency Statistics (IS) database. The period from Q4 2006 to Q3 2007 is not available broken down by industry. ³⁴ Data are from the Insolvency Statistics (IS) database. The period from Q4 2006 to Q3 2007 is not available broken down by industry. ³⁵ Data are from the Insolvency Statistics (IS) database. The period from Q4 2006 to Q3 2007 is not available broken down by industry. ³⁶ Data are from the Insolvency Statistics (IS) database. The period from Q4 2006 to Q3 2007 is not available broken down by industry. ³⁷ Data are from the Insolvency Statistics (IS) database. The period from Q4 2006 to Q3 2007 is not available broken down by industry. ³⁸ Data are from the Insolvency Statistics (IS) database. The period from Q4 2006 to Q3 2007 is not available broken down by industry. ³⁹ Data are from the Insolvency Statistics (IS) database. The period from Q4 2006 to Q3 2007 is not available broken down by industry. ⁴⁰ Data are from the Insolvency Statistics (IS) database. The period from Q4 2006 to Q3 2007 is not available broken down by industry. ⁴¹ Data are from the Insolvency Statistics (IS) database. The period from Q4 2006 to Q3 2007 is not available broken down by industry. ⁴² Data are from the Insolvency Statistics (IS) database. The period from Q4 2006 to Q3 2007 is not available broken down by industry. ⁴³ Data are from the Insolvency Statistics (IS) database. The period from Q4 2006 to Q3 2007 is not available broken down by industry. ⁴⁴ Data are from the Insolvency Statistics (IS) database. The period from Q4 2006 to Q3 2007 is not available broken down by industry. ⁴⁵ Data are from the Insolvency Statistics (IS) database. The period from Q4 2006 to Q3 2007 is not available broken down by industry. ⁴⁶ Data are from the Insolvency Statistics (IS) database. The period from Q4 2006 to Q3 2007 is not available broken down by industry. ⁴⁷ Data are from the Insolvency Statistics (IS) database. The period from Q4 2006 to Q3 2007 is not available broken down by industry. ⁴⁸ Data are from the Insolvency Statistics (IS) database. The period from Q4 2006 to Q3 2007 is not available broken down by industry. ⁴⁹ Data are from the Insolvency Statistics (IS) database. The period from Q4 2006 to Q3 2007 is not available broken down by industry. ⁵⁰ Data are from the Insolvency Statistics (IS) database. The period from Q4 2006 to Q3 2007 is not available broken down by industry. ⁵¹ Data are from the Insolvency Statistics (IS) database. The period from Q4 2006 to Q3 2007 is not available broken down by industry. ⁵² Data are from the Insolvency Statistics (IS) database. The period from Q4 2006 to Q3 2007 is not available broken down by industry. ⁵³ Data are from the Insolvency Statistics (IS) database. The period from Q4 2006 to Q3 2007 is not available broken down by industry. ⁵⁴ Data are from the Insolvency Statistics (IS) database. The period from Q4 2006 to Q3 2007 is not available broken down by industry. ⁵⁵ Data are from the Insolvency Statistics (IS) database. The period from Q4 2006 to Q3 2007 is not available broken down by industry. ⁵⁶ Data are from the Insolvency Statistics (IS) database. The period from Q4 2006 to Q3 2007 is not available broken down by industry. ⁵⁷ Data are from the Insolvency Statistics (IS) database. The period from Q4 2006 to Q3 2007 is not available broken down by industry. ⁵⁸ Data are from the Insolvency Statistics (IS) database. The period from Q4 2006 to Q3 2007 is not available broken down by industry. ⁵⁹ Data are from the Insolvency Statistics (IS) database. The period from Q4 2006 to Q3 2007 is not available broken down by industry. ⁶⁰ Data are from the Insolvency Statistics (IS) database. The period from Q4 2006 to Q3 2007 is not available broken down by industry. ⁶¹ Data are from the Insolvency Statistics (IS) database. The period from Q4 2006 to Q3 2007 is not available broken down by industry. ⁶² Data are from the Insolvency Statistics (IS) database. The period from Q4 2006 to Q3 2007 is not available broken down by industry. ⁶³ Data are from the Insolvency Statistics (IS) database. The period from Q4 2006 to Q3 2007 is not available broken down by industry. ⁶⁴ Data are from the Insolvency Statistics (IS) database. The period from Q4 2006 to Q3 2007 is not available broken down by industry. ⁶⁵ Data are from the Insolvency Statistics (IS) database. The period from Q4 2006 to Q3 2007 is not available broken down by industry. ⁶⁶ Data are from the Insolvency Statistics (IS) database. The period from Q4 2006 to Q3 2007 is not available broken down by industry. ⁶⁷ Data are from the Insolvency Statistics (IS) database. The period from Q4 2006 to Q3 2007 is not available broken down by industry. ⁶⁸ Data are from the Insolvency Statistics (IS) database. The period from Q4 2006 to Q3 2007 is not available broken down by industry. ⁶⁹ Data are from the Insolvency Statistics (IS) database. The period from Q4 2006 to Q3 2007 is not available broken down by industry. ⁷⁰ Data are from the Insolvency Statistics (IS) database. The period from Q4 2006 to Q3 2007 is not available broken down by industry. ⁷¹ Data are from the Insolvency Statistics (IS) database. The period from Q4 2006 to Q3 2007 is not available broken down by industry. ⁷² Data are from the Insolvency Statistics (IS) database. The period from Q4 2006 to Q3

3. Receiverships, Administrations and Company Voluntary Arrangements ¹

England & Wales

Year		Receivership Appointments ²	Administrator Appointments ³	In Administration (Enterprise Act 2002) ³	Company Voluntary Arrangements
not seasonally adjusted					
2000		1,595	438	:	557
2001		1,914	698	:	597
2002		1,541	643	:	651
2003		1,261	497	247	726
2004		864	1	1,601	597
2005		590	4	2,257	604
2006		588	0	3,560 ⁴	534
2007		337	3	2,509	418
2008		867	2	4,820 ⁵	587
p 2009		1,468	0	4,161	726
2000	Q1	454	89	:	124
	Q2	429	135	:	160
	Q3	355	101	:	121
	Q4	357	113	:	152
2001	Q1	649	125	:	132
	Q2	435	141	:	163
	Q3	369	146	:	141
	Q4	461	286	:	161
2002	Q1	455	176	:	151
	Q2	346	151	:	151
	Q3	377	162	:	181
	Q4	363	154	:	168
2003	Q1	315	160	:	178
	Q2	298	167	:	165
	Q3	334	154	14	171
	Q4	314	16	233	212
2004	Q1	224	1	331	176
	Q2	199	0	392	154
	Q3	203	0	421	137
	Q4	238	0	457	130
2005	Q1	114	0	489	179
	Q2	167	4	568	183
	Q3	170	0	620	130
	Q4	139	0	580	112
2006	Q1	180	0	753	124
	Q2	153	0	653	147
	Q3	93	0	675	157
	Q4	162	0	1,479 ⁴	106
2007	Q1	88	1	683	96
	Q2	77	0	585	102
	Q3	80	2	666	129
	Q4	92	0	575	91
2008	Q1	159	1	858	140
	Q2	177	0	938	131
	Q3	270	1	1,006	167
	Q4	261	0	2,018 ⁵	149
2009	Q1	316	0	1,311	156
	Q2	345	0	1,027	157
	Q3	410	0	974	194
	p Q4	397	0	849	219
Percentage change, latest quarter on corresponding quarter of previous year					
2009	Q4	52.1	:	-57.9 ⁵	47.0

p Provisional

¹ Not applicable to Companies House

² Includes Law of Property Act receiverships (see "Notes to Editors" Paragraph 9). Receivership figures between Q1 2007 and Q1 2008 were previously revised to remove duplication, and are not consistent with those for the earlier period; see "Notes to Editors" paragraph 10.

³ See paragraph 7 of the Press Release "Notes to Editors" for changes wef 15 September 2003 under the Enterprise Act 2002

⁴ The figure for Q4 2006 includes 844 separate, limited companies created and managed by "Safe Solutions Accountancy Limited" for which

⁵ From the 1st quarter 2008 onwards, separate managed service companies for which BDO Stoy Hayward was appointed administrator. The administrations were approved in September 2008, but the statistics are counted based on the date registered at Companies House (which fell in October 2008, i.e. Q4).

3a. Receiverships by industry (SIC 2003)¹

England & Wales

Section	Sub-section	3 digit	2007				2008				2009					
			Q3	Q4	Q1	Q2	Q3	Q4	Q1	Q2	Q3	Q4	Q1	Q2	Q3	Q4
Section A	AGRICULTURE, HUNTING AND FORESTRY		2	0	1	0	0	1	0	0	1	1	0	1	0	0
Section B	FISHING		0	0	0	0	0	0	0	0	0	0	0	0	0	0
Section C	MINING AND QUARRYING		0	1	0	0	0	0	0	0	1	0	0	0	0	0
Section D	MANUFACTURING		0	1	1	0	1	1	0	1	1	1	0	0	0	0
	DA Food products, beverages and tobacco		1	0	1	0	1	1	0	1	1	0	0	0	0	0
	DB Textiles and textile products		0	0	1	0	1	0	0	1	0	1	0	1	0	0
	DC Leather and leather products		0	0	0	0	0	0	0	0	0	0	0	0	0	0
	DD Wood and wood products		0	0	1	0	1	0	1	0	0	0	0	0	0	0
	DE Pulp, paper and paper products publishing and printing		0	1	1	2	2	1	0	2	1	0	0	2	0	0
	DF Coke, refined petroleum products and nuclear fuel		0	0	0	0	0	0	0	0	0	0	0	0	0	0
	DG Chemicals, chemical products and man-made fibres		0	0	0	1	1	0	0	1	0	0	1	0	0	0
	DH Rubber and plastic products		0	2	0	1	1	0	0	1	0	0	1	0	0	0
	DI Other non-metallic mineral products		0	0	0	0	0	0	0	0	0	0	0	0	0	0
	DJ Basic metals and fabricated metal products		1	2	3	1	1	3	4	2	3	4	2	3	1	1
	DK Machinery and equipment not elsewhere classified		1	0	2	1	0	0	1	0	0	0	2	1	0	0
	DL Electrical and optical equipment		1	0	1	0	0	0	0	0	0	0	0	0	0	0
	DM Transport equipment		5	1	0	3	0	0	0	0	1	1	2	0	0	0
	DN Not elsewhere classified		9	11	8	10	6	9	8	7	19	2	0	0	0	0
	Total		38	53	97	96	179	159	208	241	232	199	208	241	232	199
Section E	ELECTRICITY, GAS AND WATER SUPPLY		0	0	0	0	0	2	0	0	0	0	0	0	0	0
Section F	CONSTRUCTION		0	0	0	0	1	1	0	1	0	1	0	1	0	1
	451 Site preparation		7	5	14	17	23	39	44	59	57	36	44	59	57	36
	452 Building of complete constructions or parts thereof, civil engineering		0	0	2	1	1	0	1	2	3	3	2	3	3	2
	453 Building installation		0	2	4	4	4	4	4	10	9	7	11	7	11	9
	454 Building completion		0	0	0	0	0	0	0	0	0	0	0	0	0	0
	455 Renting of construction or demolition equipment with operator		7	7	20	22	29	44	48	56	69	48	56	69	48	56
	Total		7	7	20	22	29	44	48	56	69	48	56	69	48	56
Section G	WHOLESALE AND RETAIL TRADE; REPAIR OF MOTOR VEHICLES, MOTOR CYCLES AND PERSONAL AND HOUSEHOLD GOODS		3	0	2	5	7	8	5	5	2	8	5	5	2	2
	50 Sale, maintenance and repair of motor vehicles and motorcycles; retail sale of automotive fuel		1	1	4	3	5	5	2	6	9	8	8	8	8	8
	51 Wholesale trade and commission trade, except of motor vehicles and motorcycles		0	2	1	2	0	2	3	5	6	6	6	6	6	6
	52 Retail trade, except of motor vehicles and motorcycles; repair of personal and household goods		4	3	7	10	12	15	13	16	20	16	20	16	20	16
	Total		7	6	14	17	22	27	26	30	39	30	39	30	39	30
Section H	HOTELS AND RESTAURANTS		2	1	3	2	0	0	6	5	1	6	5	1	6	5
	551 Hotels		6	0	2	2	0	1	5	7	1	0	0	0	0	0
	553 Restaurants		3	0	2	2	0	1	2	3	2	4	3	2	4	3
	554 Bars		0	0	0	0	0	0	0	0	0	0	0	0	0	0
	Other		0	0	0	0	0	0	0	0	0	0	0	0	0	0
	Total		9	1	5	4	0	1	13	10	5	11	10	5	11	10
Section I	TRANSPORT, STORAGE AND COMMUNICATION		0	0	1	0	0	0	0	1	1	0	1	1	0	3
	60 Land transport; transport via pipelines		0	0	0	0	0	0	0	0	0	0	0	0	0	0
	61 Water transport		0	0	0	0	0	0	0	0	0	0	0	0	0	0
	62 Air transport		0	1	0	0	0	0	0	0	0	0	0	0	0	0
	63 Supporting and auxiliary transport activities; activities of travel agencies		0	0	1	1	0	0	0	0	0	0	0	0	0	0
	64 Post and telecommunications		0	1	0	0	0	0	0	0	0	0	0	0	0	0
	Total		0	2	2	3	0	1	0	1	3	0	1	3	0	8
Section J	FINANCIAL INTERMEDIATION		0	1	0	0	1	0	0	0	2	1	0	0	2	1
	66 Insurance and pension funding, except compulsory social security		0	1	3	5	4	4	2	3	5	3	5	3	3	4
	Other		0	2	3	5	5	4	2	3	7	4	2	3	7	4
	Total		0	3	6	10	9	8	4	7	12	7	8	10	7	8
Section K	REAL ESTATE, RENTING AND BUSINESS ACTIVITIES		23	36	76	74	151	129	172	163	209	172	163	209	172	163
	70 Real estate activities		1	1	1	0	1	0	1	0	0	1	0	0	0	0
	71 Renting of machinery and equipment without operator and of personal and household goods		0	1	2	3	1	2	0	3	1	2	0	3	1	2
	72 Computer and related activities		0	0	0	0	0	0	0	0	0	0	0	0	0	0
	73 Research and development		14	15	19	19	28	28	26	42	31	38	26	42	31	38
	74 Other business activities		38	53	97	96	179	159	199	208	241	199	208	241	199	208
	Total		55	85	193	198	366	316	378	370	412	378	370	412	378	412
Section L	PUBLIC ADMINISTRATION AND DEFENCE; COMPULSORY SOCIAL SECURITY		0	0	0	0	0	0	0	0	0	0	0	0	0	0
Section M	EDUCATION		1	0	0	0	1	0	0	1	0	0	1	0	0	2
Section N	HEALTH AND SOCIAL WORK		0	1	0	1	0	1	0	1	1	1	1	6	1	1
Section O	OTHER COMMUNITY, SOCIAL & PERSONAL SERVICE ACTIVITIES		2	2	10	8	10	9	9	9	8	12	9	9	8	12
Section P	PRIVATE HOUSEHOLDS EMPLOYING STAFF AND UNDIFFERENTIATED PRODUCTION ACTIVITIES OF HOUSEHOLDS FOR OWN USE		0	0	0	0	0	0	0	0	0	0	0	0	0	0
Section Q	EXTRA-TERRITORIAL ORGANISATIONS AND BODIES		0	0	0	0	0	0	0	0	0	0	0	0	0	0
ALL OTHERS ²			6	9	6	16	24	11	21	25	31	21	25	31	21	37
Total			80	92	159	177	270	261	316	345	410	316	345	410	316	397

¹ The Standard Industrial Classification (SIC 2003) definitions can be found at [http://www.statistics.gov.uk/methods_quality/sicdownload/uk_sic_1011\(2003\).pdf](http://www.statistics.gov.uk/methods_quality/sicdownload/uk_sic_1011(2003).pdf)

² Including unknown or invalid SIC codes and non-trading or dormant companies

not seasonally adjusted

3b. Administrations (Enterprise Act) by Industry (SIC 2003)¹ England & Wales

Section	Sub-section	3 digit	2007				2008				2009				not seasonally adjusted
			Q3	Q4	Q1	Q2	Q3	Q4	Q1	Q2	Q3	Q4	Q1	Q2	
Section A	AGRICULTURE, HUNTING AND FORESTRY		8	3	4	5	4	5	4	5	4	3	2	1	
Section B	FISHING		0	0	0	2	0	1	0	1	0	1	0	2	
Section C	MINING AND QUARRYING		0	2	1	0	1	0	1	2	3	1	2	4	
Section D	MANUFACTURING		14	5	8	13	10	15	17	7	7	7	7	16	
	Food products, beverages and tobacco	DA	6	5	7	9	9	11	8	13	15	4			
	Textiles and textile products	DB	1	0	0	2	1	1	1	1	0	1	0		
	Leather and leather products	DC	5	6	7	5	11	10	13	6	7	4			
	Wood and wood products	DD	28	20	41	27	33	28	51	37	27	25			
	Pulp, paper and paper products publishing and printing	DE	0	0	0	1	2	0	2	0	0	0			
	Coke, refined petroleum products and nuclear fuel	DF	9	3	1	3	5	6	6	5	4	3			
	Chemicals, chemical products and man-made fibres	DG	6	6	14	10	9	12	20	12	10	6			
	Rubber and plastic products	DH	1	5	3	4	2	7	9	6	3	5			
	Other non-metallic mineral products	DI	21	22	30	38	28	52	64	51	46	31			
	Basic metals and fabricated metal products	DJ	4	8	10	5	8	11	7	5	10	10			
	Machinery and equipment not elsewhere classified	DK	11	12	14	12	9	7	4	12	14	16			
	Electric and optical equipment	DL	12	12	4	5	0	6	0	12	14	16			
	Transport equipment	DM	16	22	34	27	38	30	43	24	22	20			
	Not elsewhere classified	DN	135	119	172	157	163	201	257	190	175	139			
	Total		2	0	0	1	0	2	0	0	0	0	0	1	
Section E	ELECTRICITY, GAS AND WATER SUPPLY														
Section F	CONSTRUCTION		1	3	0	2	2	6	3	2	3	3			
	Site preparation	451	42	41	59	48	72	98	70	74	62	53			
	Building of complete constructions or parts thereof; civil engineering	452	20	13	26	27	15	33	23	20	24	18			
	Building installation	453	13	11	17	20	15	16	20	10	15	15			
	Building completion	454	1	3	7	2	0	3	4	5	2	1			
	Renting of construction or demolition equipment with operator	455	77	71	109	99	104	156	120	111	106	90			
	Total		16	10	13	19	21	41	30	22	15	20			
Section G	WHOLESALE AND RETAIL TRADE; REPAIR OF MOTOR VEHICLES; MOTOR CYCLES AND PERSONAL AND HOUSEHOLD GOODS		48	36	66	66	48	66	68	63	60	60			
	Sale, maintenance and repair of motor vehicles and motorcycles; retail sale of automotive fuel	50	105	71	131	151	122	217	234	139	119	115			
	Wholesale trade and commission trade, except of motor vehicles and motorcycles	51													
	Retail trade, except of motor vehicles and motorcycles; repair of personal and household goods	52													
	Total		0	4	8	5	2	11	31	12	11	14			
Section H	HOTELS AND RESTAURANTS		21	16	27	22	33	26	36	23	28	23			
	Hotels	551	5	4	5	9	17	13	7	13	8	20			
	Restaurants	553	4	2	1	6	4	3	2	2	2	3			
	Bars	554	30	26	41	42	56	53	81	50	49	60			
	Total		17	12	14	20	25	25	29	13	21	16			
Section I	TRANSPORT, STORAGE AND COMMUNICATION		0	0	0	1	0	3	4	3	0	0			
	Land transport; transport via pipelines	60	0	0	0	0	0	2	0	0	0	0			
	Water transport	61	0	0	0	0	0	0	0	0	0	0			
	Air transport	62	0	0	0	0	0	0	0	0	0	0			
	Supporting and auxiliary transport activities; activities of travel agencies	63	0	0	0	0	0	0	0	0	0	0			
	Post and telecommunications	64	10	6	4	10	11	12	8	6	16	6			
	Total		36	25	30	46	65	54	56	32	49	38			
Section J	FINANCIAL INTERMEDIATION		2	2	6	2	0	5	0	3	3	0			
	Insurance and pension funding, except compulsory social security	66	7	5	6	8	15	39	11	12	11	21			
	Other		9	7	12	10	15	44	11	15	14	21			
	Total		12	24	31	53	105	116	97	95	69	71			
Section K	REAL ESTATE, RENTING AND BUSINESS ACTIVITIES		2	3	7	6	11	10	8	7	1	12			
	Real estate activities	70	19	17	33	39	28	39	28	31	34	21			
	Renting of machinery and equipment without operator and of personal and household goods	71	2	3	0	1	5	6	1	6	4	0			
	Computer and related activities	72	136	119	153	198	191	976	251	209	216	169			
	Research and development	73	171	166	224	287	340	1,147	385	348	324	273			
	Other business activities	74	0	0	2	0	2	1	0	0	0	0			
	Total		5	7	11	5	7	4	1	2	8	5			
Section L	PUBLIC ADMINISTRATION AND DEFENCE; COMPULSORY SOCIAL SECURITY		7	5	14	8	8	15	12	3	18	21			
Section M	EDUCATION		36	27	44	32	48	48	58	76	54	37			
Section N	HEALTH AND SOCIAL WORK		0	0	0	1	0	0	1	0	0	0			
Section O	OTHER COMMUNITY, SOCIAL & PERSONAL SERVICE ACTIVITIES		0	0	0	0	0	0	0	0	0	0			
Section P	PRIVATE HOUSEHOLDS EMPLOYING STAFF AND UNDIFFERENTIATED PRODUCTION ACTIVITIES OF HOUSEHOLDS FOR OWN USE		0	0	0	0	0	0	0	0	0	0			
Section Q	EXTRA-TERRITORIAL ORGANISATIONS AND BODIES		45	46	63	82	71	68	88	56	52	41			
	ALL OTHERS²		666	575	658	938	1,006	2,018	1,311	1,027	974	849			
	Total		666	575	658	938	1,006	2,018	1,311	1,027	974	849			

¹ Provisional

² The Standard Industrial Classification (SIC 2003) definitions can be found at [http://www.statistics.gov.uk/methods_quality/downloads/UK_SIC_Vol1\(2003\).pdf](http://www.statistics.gov.uk/methods_quality/downloads/UK_SIC_Vol1(2003).pdf)

³ Including unknown or invalid SIC codes and non-trading or dormant companies

⁴ The figures for Q3 2008 include 728 establishments which BDO Sky View used, was appointed administrator. The administrators were approved in September 2008, but the statistics are counted based on the date registered at Companies House (which fall in October 2008, i.e. Q4).

3C. Company voluntary arrangements by industry (SIC 2003)¹

England & Wales

not seasonally adjusted

Section	Sub-section	2007				2008				2009			
		Q3	Q4	Q1	Q2	Q3	Q4	Q1	Q2	Q3	Q4	Q3 P	
Section A	AGRICULTURE, HUNTING AND FORESTRY	1	0	0	1	1	0	1	0	2	1		
Section B	FISHING	0	0	0	0	0	0	0	0	0	0		
Section C	MINING AND QUARRYING	0	0	0	0	2	0	0	1	0	0		
Section D	MANUFACTURING	0	1	2	1	1	1	2	0	3	2		
	Food products, beverages and tobacco	0	0	2	3	2	1	0	0	0	2		
	Textiles and textile products	0	0	0	0	0	0	0	0	0	0		
	Leather and leather products	1	2	6	3	0	1	0	2	2	1		
	Wood and wood products	0	0	0	1	0	0	7	4	3	4		
	Pulp, paper and paper products publishing and printing	0	0	0	1	0	0	0	0	0	0		
	Coke, refined petroleum products and nuclear fuel	4	0	1	1	1	1	1	0	0	1		
	Chemicals, chemical products and man-made fibres	0	0	1	2	0	0	1	1	0	2		
	Rubber and plastic products	0	0	0	0	0	0	1	1	0	0		
	Other non-metallic mineral products	7	3	13	6	4	2	2	3	0	7		
	Basic metals and fabricated metal products	7	3	13	6	4	2	2	3	0	7		
	Machinery and equipment not elsewhere classified	6	2	1	1	1	0	1	2	4	1		
	Electric and optical equipment	0	1	0	0	0	0	1	1	0	0		
	Transport equipment	6	2	4	5	3	3	3	1	3	5		
	Not elsewhere classified	25	12	31	28	20	14	18	26	23	27		
	Total												
Section E	ELECTRICITY, GAS AND WATER SUPPLY	0	0	0	0	0	1	0	0	0	0		
Section F	CONSTRUCTION	0	1	3	0	0	0	1	0	1	0		
	451 Site preparation	3	6	11	19	17	15	25	14	26	11		
	452 Building of complete constructions or parts thereof; civil engineering	7	8	3	8	7	5	14	8	6	8		
	453 Building installation	5	3	6	1	4	4	8	1	11	5		
	454 Building completion	0	0	1	0	0	0	1	0	0	0		
	455 Renting of construction or demolition equipment with operator	15	18	24	28	28	24	49	23	44	24		
	Total												
Section G	WHOLESALE AND RETAIL TRADE; REPAIR OF MOTOR VEHICLES, MOTOR CYCLES AND PERSONAL AND HOUSEHOLD GOODS	3	2	5	1	4	2	1	7	2	9		
	50 Sale, maintenance and repair of motor vehicles and motorcycles, retail sale of automotive fuel	9	3	2	4	10	8	8	5	11	11		
	51 Wholesale trade and commission trade, except of motor vehicles and motorcycles	8	2	10	3	6	10	9	5	16	11		
	52 Retail trade, except of motor vehicles and motorcycles; repair of personal and household goods	20	7	17	8	20	20	18	17	29	31		
	Total												
Section H	HOTELS AND RESTAURANTS	0	0	1	3	1	0	2	4	2	4		
	551 Hotels	8	1	3	3	4	8	3	4	5	8		
	553 Restaurants	1	3	1	2	10	10	2	3	8	3		
	554 Bars	1	1	3	0	0	1	1	0	2	2		
	Other	10	5	8	8	15	19	6	11	17	17		
	Total												
Section I	TRANSPORT, STORAGE AND COMMUNICATION	4	2	1	2	4	7	2	1	3	8		
	60 Land transport, transport via pipelines	0	0	0	0	0	1	0	0	0	0		
	61 Water transport	0	0	0	0	0	1	0	0	0	0		
	62 Air transport	1	2	1	1	1	1	0	1	0	2		
	63 Supporting and auxiliary transport activities; activities of travel agencies	2	1	3	1	1	0	0	1	2	2		
	64 Post and telecommunications	7	5	5	4	5	9	2	3	5	12		
	Total												
Section J	FINANCIAL INTERMEDIATION	0	1	0	0	0	0	0	0	0	1		
	66 Insurance and pension funding, except compulsory social security	1	0	2	1	1	2	2	3	2	1		
	Other	1	1	2	1	1	2	2	3	2	2		
	Total												
Section K	REAL ESTATE, RENTING AND BUSINESS ACTIVITIES	4	2	0	4	6	4	10	7	2	14		
	70 Real estate activities	0	0	1	0	1	0	0	2	2	1		
	71 Renting of machinery and equipment without operator and of personal and household goods	3	2	10	9	10	4	9	6	1	1		
	72 Computer and related activities	1	0	1	0	1	1	0	0	2	2		
	73 Research and development	32	15	24	24	33	27	29	34	41	61		
	74 Other business activities	40	19	36	37	51	36	43	52	53	79		
	Total												
Section L	PUBLIC ADMINISTRATION AND DEFENCE; COMPULSORY SOCIAL SECURITY	0	0	0	1	0	0	0	0	0	0		
Section M	EDUCATION	2	3	1	3	2	3	1	1	2	3		
Section N	HEALTH AND SOCIAL WORK	1	2	2	1	5	1	2	3	2	4		
Section O	OTHER COMMUNITY, SOCIAL & PERSONAL SERVICE ACTIVITIES	4	14	9	6	7	11	8	12	10	11		
Section P	PRIVATE HOUSEHOLDS EMPLOYING STAFF AND UNDIFFERENTIATED PRODUCTION ACTIVITIES OF HOUSEHOLDS FOR OWN USE	0	0	0	0	0	1	0	0	0	0		
Section Q	EXTRA-TERRITORIAL ORGANISATIONS AND BODIES	0	0	0	0	0	0	0	0	0	0		
ALL OTHERS ²		3	5	5	5	10	8	4	5	5	8		
Total		129	91	140	131	167	149	156	157	194	219		

Provisional

¹ The Standard Industrial Classification (SIC 2003) definitions can be found at http://www.statistics.gov.uk/methods_and_formats/downloads/uk_sic_v0412003.pdf

² Including unknown or invalid SIC codes and non-trading or dormant companies

3d. Creditors' Voluntary Liquidations following Administration¹ England & Wales

not seasonally adjusted

Year		Number of new cases
2000		:
2001		:
2002		:
2003		0
2004		165
2005		681
2006		914
2007		1,095
2008		993
p 2009		1,469
2000	Q1	:
	Q2	:
	Q3	:
	Q4	:
2001	Q1	:
	Q2	:
	Q3	:
	Q4	:
2002	Q1	:
	Q2	:
	Q3	:
	Q4	:
2003	Q1	:
	Q2	:
	Q3	0
	Q4	0
2004	Q1	12
	Q2	18
	Q3	36
	Q4	99
2005	Q1	204
	Q2	147
	Q3	149
	Q4	181
2006	Q1	212
	Q2	216
	Q3	244
	Q4	242
2007	Q1	276
	Q2	285
	Q3	264
	Q4	270
2008	Q1	270
	Q2	223
	Q3	264
	Q4	236
2009	Q1	340
	Q2	370
	Q3	355
	p Q4	404

Percentage change, latest quarter on corresponding quarter of previous year

2009	Q4	71.2
-------------	----	------

p Provisional

: Not applicable

¹ Since the revisions to corporate administration under the Enterprise Act, those administrations which resulted in a Creditors' Voluntary Liquidation (CVL) have been separately recorded by Companies House. These post-Administration new case CVLs are not included under the headline CVL figures at Table 1 as they do not represent a new company entering into an insolvency procedure for the first time. Similar information for Administrations converting to a Compulsory Liquidation or to a Company Voluntary Arrangement is not available; however numbers of these are relatively low in comparison.

4. Insolvencies Scotland

not seasonally adjusted

Year	Individuals ¹			Companies ³		
	Total	Sequestrations (No. of LILA ²)	Protected Trust Deeds	Total	Compulsory Liquidations	Creditors ¹ Voluntary Liquidations
2000	5,766	2,965	2,801	583	344	239
2001	6,827	3,048	3,779	602	378	224
2002	8,389	3,215	5,174	788	556	232
2003	8,780	3,328	5,452	631	436	195
2004	9,321	3,297	6,024	621	431	190
2005	11,846	4,965	6,881	569	420	149
2006	13,638	5,430	8,208	549	416	133
2007	13,814	6,219	7,595	539	439	100
2008	19,912	12,370 (7,133) ²	7,542	524	437	87
p 2009	23,482	14,356 (8,775)	9,126	584	432	152
2000	Q1 1,395	751	644	136	75	61
	Q2 1,527	751	776	153	92	61
	Q3 1,391	712	679	139	85	54
	Q4 1,453	751	702	155	92	63
2001	Q1 1,503	709	794	166	102	64
	Q2 1,746	750	996	141	82	59
	Q3 1,881	839	1,042	108	75	33
	Q4 1,697	750	947	187	119	68
2002	Q1 1,858	832	1,026	240	170	70
	Q2 2,136	797	1,339	175	123	52
	Q3 2,247	834	1,413	184	139	45
	Q4 2,148	752	1,396	189	124	65
2003	Q1 2,015	799	1,216	183	133	50
	Q2 2,189	858	1,331	168	118	50
	Q3 2,367	845	1,522	154	109	45
	Q4 2,209	826	1,383	126	76	50
2004	Q1 2,154	720	1,434	153	95	58
	Q2 2,160	851	1,309	147	110	37
	Q3 2,441	923	1,518	168	113	55
	Q4 2,566	803	1,763	153	113	40
2005	Q1 2,462	908	1,554	140	103	37
	Q2 2,830	1,307	1,523	159	120	39
	Q3 3,593	1,461	2,132	151	115	36
	Q4 2,961	1,289	1,672	119	82	37
2006	Q1 3,111	1,241	1,870	128	96	32
	Q2 3,544	1,305	2,239	133	99	34
	Q3 3,601	1,528	2,073	156	132	24
	Q4 3,382	1,356	2,026	132	89	43
2007	Q1 3,471	1,505	1,966	166	132	34
	Q2 3,498	1,606	1,892	165	131	34
	Q3 3,527	1,545	1,982	125	105	20
	Q4 3,318	1,563	1,755	83	71	12
2008	Q1 3,324	1,444	1,880	102	95	7
	Q2 4,735	2,853 (1,709)	1,882	132	111	21
	Q3 6,020	4,077 (2,773)	1,943	127	111	16
	Q4 5,833	3,996 (2,651)	1,837	163	120	43
2009	Q1 r 5,743	r 3,772 (2,284)	1,971	161	124	37
	Q2 6,294	3,730 (2,394)	2,564	146	107	39
	Q3 5,767	3,504 (2,107) r	2,263	123	95	28
	p Q4 5,678	3,350 (1,990)	2,328	154	106	48

Percentage change, latest quarter on corresponding quarter of previous year

2009	Q4	-2.7	-16.2 (-24.9)	26.7	-5.5	-11.7	11.6
-------------	----	------	---------------	------	------	-------	------

p Provisional, r Revised

¹ Source: Accountant in Bankruptcy (AiB). Latest News Release <http://www.aib.gov.uk/About/annualtargets/quarterlyreports/INSOLVECETHIRDQUARTER>.

² On 1 April 2008, Part 1 of the Bankruptcy and Diligence etc. (Scotland) Act 2007 came into force making significant changes to some aspects of bankruptcy, debt relief and debt enforcement in Scotland. This included the introduction of the new route into bankruptcy for people with low income and low assets (LILA). Of the number or sequestrations, individuals who meet LILA criteria are shown in brackets (See "Notes to Editors" paragraph 15).

³ Source: Companies House, Scotland.

4a. Compulsory liquidations by industry (SIC 2003)¹

Scotland

not seasonally adjusted

Section	Sub-section	3 digit	2007 ²				2008				2009				
			Q1	Q2	Q3	Q4	Q1	Q2	Q3	Q4	Q1	Q2	Q3	Q4	
Section A		AGRICULTURE, HUNTING AND FORESTRY	1	0	3	0	0	0	1	2	0	1	0	0	0
Section B		FISHING	0	0	0	0	0	0	0	0	1	2	0	0	0
Section C		MINING AND QUARRYING	0	0	0	1	0	0	0	1	0	0	2	0	0
Section D	DA	MANUFACTURING	0	1	0	0	0	0	1	0	1	2	0	0	2
	DB	Food, beverages and tobacco	3	1	1	2	0	1	0	0	0	0	2	0	0
	DC	Textiles and leather products	0	0	0	0	0	0	0	0	0	0	0	0	0
	DD	Leather and leather products	0	0	0	0	0	0	0	0	0	0	0	0	0
	DE	Wood and wood products	1	1	1	0	0	0	1	0	1	1	1	2	1
	DF	Pulp, paper and paper products, publishing and printing	0	0	0	0	0	0	0	0	0	0	0	0	0
	DG	Coal, refined petroleum products and nuclear fuel	0	0	0	0	0	0	0	0	0	0	0	0	0
	DH	Chemical and allied products, rubber and plastics	0	0	0	0	0	0	0	0	0	0	0	0	0
	DI	Rubber and plastic products	0	0	0	0	0	0	0	0	0	0	0	0	0
	DJ	Other non-metallic mineral products	1	0	0	0	0	0	0	0	0	0	0	0	0
	DK	Basic metals and fabricated metal products	3	2	2	0	1	2	0	0	4	3	3	5	3
	DL	Machinery and equipment not elsewhere classified	1	0	0	0	0	1	0	0	0	0	0	0	0
	DM	Electrical and optical equipment	1	1	0	0	0	0	0	0	0	0	0	0	0
	DN	Transport equipment	2	1	0	0	0	2	1	0	1	2	3	2	1
		Not elsewhere classified	11	14	7	3	3	8	5	5	10	13	7	12	12
		Total	11	14	7	3	3	8	5	5	10	13	7	12	12
Section E		ELECTRICITY, GAS AND WATER SUPPLY	0	0	0	0	0	1	0	0	0	0	0	0	0
Section F	45	CONSTRUCTION	0	0	1	0	0	0	0	0	0	0	0	0	0
	451	Site preparation	0	0	1	0	0	0	0	0	0	0	0	0	0
	452	Building of complete constructions or parts thereof, civil engineering	9	7	8	5	6	6	6	7	9	6	9	7	10
	453	Building installation	2	6	5	4	6	4	5	7	7	7	7	7	6
	454	Building completion	4	4	3	3	3	4	2	6	5	6	5	6	6
	455	Renewing of construction or demolition equipment with greater	2	0	0	0	0	0	0	0	0	0	0	0	0
		Total	17	17	17	12	19	19	15	25	21	14	19	22	22
Section G	50	WHOLESALE AND RETAIL TRADE; REPAIR OF MOTOR VEHICLES, MOTOR CYCLES AND PERSONAL AND HOUSEHOLD GOODS	2	1	2	0	2	3	1	4	3	2	2	1	2
	51	Sale, maintenance and repair of motor vehicles and motorcycles; retail sale of automotive fuel	2	4	6	1	2	3	3	4	4	5	6	6	6
	52	Wholesale trade and commission trade, except of motor vehicles and motorcycles	5	8	8	3	7	8	7	7	6	7	7	5	7
		Total	9	13	16	4	11	11	6	15	13	6	9	10	10
Section H	55	HOTELS AND RESTAURANTS	1	2	2	0	0	0	3	1	0	2	4	2	0
	551	Hotels	6	3	2	3	2	4	5	2	3	3	4	5	5
	553	Restaurants	9	6	7	1	4	5	2	3	2	1	3	2	3
	554	Bars	2	2	1	1	1	2	3	2	2	1	1	1	1
		Other	2	2	1	0	0	0	0	0	0	0	0	0	0
		Total	22	13	6	4	3	12	9	8	8	8	8	10	10
Section I	60	TRANSPORT, STORAGE AND COMMUNICATION	1	4	2	2	2	2	3	2	3	2	2	1	2
	61	Land transport, transport via pipelines	0	1	0	0	0	0	0	0	0	0	0	0	0
	62	Water transport	0	1	0	0	0	0	0	0	0	0	0	0	0
	63	Air transport	0	1	1	0	0	0	0	0	0	0	0	0	0
	64	Supporting and auxiliary transport activities; activities of travel agencies	0	1	0	0	2	1	1	2	0	0	0	0	0
		Post and telecommunications	1	7	3	3	5	4	5	6	5	2	2	3	3
		Total	1	7	3	3	5	4	5	6	5	2	2	3	3
Section J	66	FINANCIAL INTERMEDIATION	0	0	0	0	1	0	0	0	0	0	0	0	0
		Insurance and pension funding, except compulsory social security	0	0	1	0	0	0	0	0	0	0	0	0	0
		Other	0	0	1	0	0	0	0	0	0	0	0	0	0
		Total	0	0	1	0	2	0	2	0	0	0	0	0	0
Section K	70	REAL ESTATE, RENTING AND BUSINESS ACTIVITIES	4	8	7	1	3	4	1	7	5	9	6	5	5
	71	Real estate activities	2	1	1	0	1	1	0	1	1	1	1	1	1
	72	Renting of motor vehicles and equipment without operator and of personal and household goods	6	2	3	2	3	4	4	4	3	6	3	4	4
	73	Computer and related activities	0	0	0	0	0	0	0	0	0	0	0	0	0
	74	Research and development	41	49	31	28	33	37	52	29	34	30	32	32	32
		Other business activities	56	60	41	31	42	45	58	41	44	46	39	42	42
		Total	103	127	112	62	77	117	146	115	124	117	124	124	124
Section L		PUBLIC ADMINISTRATION AND DEFENCE; COMPULSORY SOCIAL SECURITY	1	0	0	0	0	0	0	0	0	0	0	0	0
Section M		EDUCATION	1	2	1	1	2	1	0	0	0	1	1	1	1
Section N		HEALTH AND SOCIAL WORK	0	0	0	1	3	2	1	1	0	3	0	0	0
Section O		OTHER COMMUNITY, SOCIAL & PERSONAL SERVICE ACTIVITIES	8	3	6	6	2	4	7	4	7	8	5	3	3
Section P		PRIVATE HOUSEHOLDS EMPLOYING STAFF AND UNDIFFERENTIATED PRODUCTION ACTIVITIES OF HOUSEHOLDS FOR OWN USE	0	0	0	0	0	0	0	0	0	0	0	0	0
Section Q		EXTRA-TERRITORIAL ORGANISATIONS AND BODIES	0	0	0	0	0	0	0	0	0	0	0	0	0
		ALL OTHERS³	5	2	4	5	3	6	2	9	14	1	7	3	3
		Total	132	131	108	71	95	111	111	120	124	107	95	108	108

¹ Provisional.

² The Standard Industrial Classification (SIC 2003) definitions can be found at [http://www.statistics.gov.uk/methods_qualify/sectors/uk SIC_V04 \(2003\).pdf](http://www.statistics.gov.uk/methods_qualify/sectors/uk SIC_V04 (2003).pdf)

³ Including unknown or invalid SIC codes and non-trading or dormant companies

⁴ Prior to Q1 2007, company liquidations in Scotland were classified according to the Insolvency Trade Classifications (ITC). These breakdowns are available at <http://www.insolvency.gov.uk/information/insolvency/2007/2007/insol.htm> from Q1 1995 to Q4 2006.

4b. Creditors' voluntary liquidations by industry (SIC 2003)¹

Scotland

not seasonally adjusted

Section	Sub-section	3 digit	2007 ²				2008				2009						
			Q1	Q2	Q3	Q4	Q1	Q2	Q3	Q4	Q1	Q2	Q3	Q4			
Section A	AGRICULTURE, HUNTING AND FORESTRY		0	0	0	0	0	0	0	0	0	0	0	0	0	0	0
Section B	FISHING		0	0	0	0	0	0	0	0	0	0	0	0	0	0	0
Section C	MINING AND QUARRYING		0	0	0	0	0	0	0	0	0	0	0	0	0	0	0
Section D	MANUFACTURING		0	0	0	0	0	0	0	0	0	0	0	0	0	0	0
DA	Beverages and tobacco		0	0	0	0	0	0	0	0	0	0	0	0	0	0	0
DB	Textiles and leather products		0	0	0	0	0	0	0	0	0	0	0	0	0	0	0
DC	Wood and wood products		0	0	0	0	0	0	0	0	0	0	0	0	0	0	0
DD	Pulp, paper and paper products publishing and printing		0	0	0	0	0	0	0	0	0	0	0	0	0	0	0
DE	Coke, refined petroleum products and nuclear fuel		0	0	0	0	0	0	0	0	0	0	0	0	0	0	0
DF	Chemicals and allied products		0	0	0	0	0	0	0	0	0	0	0	0	0	0	0
DG	Rubber and plastic products		0	0	0	0	0	0	0	0	0	0	0	0	0	0	0
DH	Other non-metallic mineral products		0	0	0	0	0	0	0	0	0	0	0	0	0	0	0
DI	Basic metals and fabricated metal products		0	0	0	0	0	0	0	0	0	0	0	0	0	0	0
DJ	Machinery and equipment not elsewhere classified		0	0	0	0	0	0	0	0	0	0	0	0	0	0	0
DK	Electrical and optical equipment		0	0	0	0	0	0	0	0	0	0	0	0	0	0	0
DL	Transport equipment		0	0	0	0	0	0	0	0	0	0	0	0	0	0	0
DM	Other metal products		0	0	0	0	0	0	0	0	0	0	0	0	0	0	0
DN	Not elsewhere classified		1	4	3	2	1	2	0	3	2	3	2	3	2	3	7
	Total		0	0	0	0	0	0	0	0	0	0	0	0	0	0	0
Section E	ELECTRICITY, GAS AND WATER SUPPLY		0	0	0	0	0	0	0	0	0	0	0	0	0	0	0
Section F	CONSTRUCTION		0	0	0	0	0	0	0	0	0	0	0	0	0	0	0
45	Site preparation		0	0	0	0	0	0	0	0	0	0	0	0	0	0	0
451	Building of complete constructions or parts thereof; civil engineering		5	2	2	2	0	1	0	0	0	0	0	0	0	0	0
452	Building installation		0	3	1	1	2	0	0	0	0	0	0	0	0	0	0
453	Building completion		1	0	0	0	0	0	0	0	0	0	0	0	0	0	0
454	Renting of construction or demolition equipment with operator		0	0	0	0	0	0	0	0	0	0	0	0	0	0	0
455	Renting of construction or demolition equipment without operator		0	0	0	0	0	0	0	0	0	0	0	0	0	0	0
	Total		6	5	3	3	2	2	1	4	1	4	1	5	5	5	5
Section G	WHOLESALE AND RETAIL TRADE; REPAIR OF MOTOR VEHICLES, MOTOR CYCLES AND PERSONAL AND HOUSEHOLD GOODS		2	0	1	0	0	0	0	0	0	0	0	0	0	0	0
50	Sale, maintenance and repair of motor vehicles and motorcycles; retail sale of automotive fuel		0	1	0	0	0	0	0	0	0	0	0	0	0	0	0
51	Wholesale trade and commission trade, except of motor vehicles and motorcycles		0	1	0	0	0	0	0	0	0	0	0	0	0	0	0
52	Retail trade, except of motor vehicles and motorcycles; repair of personal and household goods		3	5	3	0	0	0	0	0	0	0	0	0	0	0	0
	Total		5	6	3	0	2	1	2	8	1	7	1	2	10	10	10
Section H	HOTELS AND RESTAURANTS		0	0	0	0	0	0	0	0	0	0	0	0	0	0	0
55	Hotels		0	0	0	0	0	0	0	0	0	0	0	0	0	0	0
551	Hotels		0	0	0	0	0	0	0	0	0	0	0	0	0	0	0
552	Restaurants		0	0	0	0	0	0	0	0	0	0	0	0	0	0	0
553	Restaurants		0	0	0	0	0	0	0	0	0	0	0	0	0	0	0
554	Bars		0	0	0	0	0	0	0	0	0	0	0	0	0	0	0
555	Other		0	0	0	0	0	0	0	0	0	0	0	0	0	0	0
	Total		0	0	0	0	0	0	0	0	0	0	0	0	0	0	0
Section I	TRANSPORT, STORAGE AND COMMUNICATION		0	0	0	0	0	0	0	0	0	0	0	0	0	0	0
60	Land transport, transport via pipelines		0	0	0	0	0	0	0	0	0	0	0	0	0	0	0
61	Water transport		0	0	0	0	0	0	0	0	0	0	0	0	0	0	0
62	Air transport		0	0	0	0	0	0	0	0	0	0	0	0	0	0	0
63	Storage and auxiliary transport activities; activities of travel agencies		0	0	0	0	0	0	0	0	0	0	0	0	0	0	0
64	Post and telecommunications		0	0	0	0	0	0	0	0	0	0	0	0	0	0	0
	Total		0	0	0	0	0	0	0	0	0	0	0	0	0	0	0
Section J	FINANCIAL INTERMEDIATION		1	0	0	0	0	0	0	0	0	0	0	0	0	0	0
66	Insurance and pension funding, except compulsory social security		0	0	0	0	0	0	0	0	0	0	0	0	0	0	0
	Total		1	0	0	0	0	0	0	0	0	0	0	0	0	0	0
Section K	REAL ESTATE, RENTING AND BUSINESS ACTIVITIES		2	0	0	0	0	0	0	0	0	0	0	0	0	0	0
70	Real estate activities		0	0	0	0	0	0	0	0	0	0	0	0	0	0	0
71	Renting of machinery and equipment without operator and of personal and household goods		0	0	0	0	0	0	0	0	0	0	0	0	0	0	0
72	Construction activities		0	0	0	0	0	0	0	0	0	0	0	0	0	0	0
73	Research and development		1	0	0	0	0	0	0	0	0	0	0	0	0	0	0
74	Other business activities		1	0	0	0	0	0	0	0	0	0	0	0	0	0	0
	Total		14	11	5	5	2	7	6	15	17	12	19	12	19	12	19
Section L	PUBLIC ADMINISTRATION AND DEFENCE; COMPULSORY SOCIAL SECURITY		0	0	0	0	0	0	0	0	0	0	0	0	0	0	0
Section M	EDUCATION		0	0	0	0	0	0	0	0	0	0	0	0	0	0	0
Section N	HEALTH AND SOCIAL WORK		0	0	0	0	0	0	0	0	0	0	0	0	0	0	0
Section O	OTHER COMMUNITY, SOCIAL & PERSONAL SERVICE ACTIVITIES		0	1	0	0	0	0	0	0	0	0	0	0	0	0	0
Section P	PRIVATE HOUSEHOLDS EMPLOYING STAFF AND UNDIFFERENTIATED PRODUCTION ACTIVITIES OF HOUSEHOLDS FOR OWN USE		0	1	3	1	0	0	3	2	1	2	1	2	1	2	1
Section Q	EXTRA-TERRITORIAL ORGANISATIONS AND BODIES		0	0	0	0	0	0	0	0	0	0	0	0	0	0	0
	Total		34	34	20	12	7	21	16	43	37	39	28	48	48	48	48

p Provisional.

¹ The Standard Industrial Classification (SIC 2003) definitions can be found at http://www.statistics.gov.uk/methods_qualification/downloads/uk_sic_vs1003.pdf

² Including unknown or invalid SIC codes and non-trading or dormant companies

³ Prior to Q1 2007, company liquidations in Scotland were classified according to the Insolvency Trade Classifications (ITC); these breakdowns are available at http://www.insolvency.gov.uk/insolvencyinformation/statistics/2007/2007table1.htm#annex_01_1998_0_04_2006

5. Receiverships, Administrations and Company Voluntary Arrangements¹

Scotland

not seasonally adjusted

Year	Receivership Appointments	Administrator Appointments ²	In Administration (Enterprise Act 2002) ²	Company Voluntary Arrangements	
2000	108	6	:	2	
2001	97	4	:	3	
2002	118	12	:	2	
2003	118	6	3	7	
2004	82	0	31	6	
2005	56	0	55	8	
2006	34	0	86	5	
2007	75	0	37	6	
2008	121	0	123	4	
p 2009	40	0	134	6	
2000	Q1	24	2	:	1
	Q2	35	1	:	0
	Q3	30	0	:	1
	Q4	19	3	:	0
2001	Q1	26	2	:	1
	Q2	27	1	:	1
	Q3	19	1	:	1
	Q4	25	0	:	0
2002	Q1	26	5	:	0
	Q2	26	3	:	1
	Q3	29	3	:	1
	Q4	37	1	:	0
2003	Q1	41	4	:	0
	Q2	21	1	:	3
	Q3	36	1	1	1
	Q4	20	0	2	3
2004	Q1	30	0	9	1
	Q2	23	0	11	4
	Q3	13	0	7	0
	Q4	16	0	4	1
2005	Q1	27	0	8	1
	Q2	9	0	7	4
	Q3	12	0	19	2
	Q4	8	0	21	1
2006	Q1	11	0	28	2
	Q2	16	0	20	1
	Q3	3	0	18	1
	Q4	4	0	20	1
2007	Q1	9	0	15	2
	Q2	22	0	11	1
	Q3	8	0	6	2
	Q4	36	0	5	1
2008	Q1	56	0	12	0
	Q2	17	0	35	2
	Q3	43	0	21	0
	Q4	5	0	55	2
2009	Q1	9	0	67	2
	Q2	8	0	30	2
	Q3	17	0	14	0
	p Q4	6	0	23	2

Percentage change, latest quarter on corresponding quarter of previous year

2009	Q4	20.0	:	-58.2	0.0
------	----	------	---	-------	-----

p Provisional

: Not applicable

¹ Registered at Companies House (Scotland)

² See paragraph 7 of the Press Release "Notes to Editors" for changes wef 15 September 2003 under the Enterprise Act 2002

6. Insolvencies

Northern Ireland

not seasonally adjusted

Year	Individuals			Companies			
	Total	Bankruptcy Orders	Individual Voluntary Arrangements	Total	Compulsory Liquidations	Creditors' Voluntary Liquidations	
2000	616	349	267	..	83	..	
2001	468	292	176	..	60	..	
2002	541	334	207	102	49	53	
2003	835	517	318	142	95	47	
2004	1,115	666	449	121	76	45	
2005	1,454	821	633	138	85	53	
2006	1,809	1,035	774	128	78	50	
2007	1,338	898	440	164	122	42	
2008	1,638	1,079	559	209	158	51	
p 2009	1,959	1,237	722	247	164	83	
2000	Q1	202	104	98	..	22	..
	Q2	171	116	55	..	27	..
	Q3	110	54	56	..	15	..
	Q4	133	75	58	..	19	..
2001	Q1	137	86	51	..	16	..
	Q2	137	88	49	..	18	..
	Q3	79	37	42	..	11	..
	Q4	115	81	34	..	15	..
2002	Q1	121	74	47	24	12	12
	Q2	143	85	58	19	5	14
	Q3	121	74	47	33	17	16
	Q4	156	101	55	26	15	11
2003	Q1	146	90	56	37	30	7
	Q2	219	141	78	42	25	17
	Q3	205	109	96	29	19	10
	Q4	265	177	88	34	21	13
2004	Q1	253	155	98	35	19	16
	Q2	282	173	109	39	27	12
	Q3	286	165	121	28	20	8
	Q4	294	173	121	19	10	9
2005	Q1	302	174	128	29	15	14
	Q2	438	241	197	47	28	19
	Q3	320	193	127	31	19	12
	Q4	394	213	181	31	23	8
2006	Q1	408	245	163	29	19	10
	Q2	494	285	209	41	24	17
	Q3	425	241	184	28	15	13
	Q4	482	264	218	30	20	10
2007	Q1	343	218	125	36	29	7
	Q2	338	228	110	38	29	9
	Q3	338	227	111	42	28	14
	Q4	319	225	94	48	36	12
2008	Q1	330	226	104	42	37	5
	Q2	479	331	148	57	42	15
	Q3	386	229	157	44	27	17
	Q4	443	293	150	66	52	14
2009	Q1	446	302	144	57	34	23
	Q2	558	353	205	65	46	19
	Q3	381	200	181	51	27	24
	p Q4	574	382	192	74	57	17

Percentage change, latest quarter on corresponding quarter of previous year

2009	Q4	29.6	30.4	28.0	12.1	9.6	21.4
-------------	----	------	------	------	------	-----	------

p Provisional

.. Not available

7. Rate of company liquidations¹

Year		England & Wales		Scotland	
		% of Active Register	% of Total Register ²	% of Active Register	% of Total Register ²
2000	Q1	1.1	1.0	0.8	0.7
	Q2	1.1	1.0	0.8	0.7
	Q3	1.1	1.0	0.8	0.7
	Q4	1.1	1.0	0.8	0.7
2001	Q1	1.1	1.0	0.8	0.7
	Q2	1.1	1.0	0.8	0.7
	Q3	1.1	1.0	0.7	0.7
	Q4	1.1	1.0	0.8	0.7
2002	Q1	1.1	1.0	0.9	0.8
	Q2	1.1	1.0	0.9	0.8
	Q3	1.1	1.0	1.0	0.9
	Q4	1.1	1.0	1.0	0.9
2003	Q1	1.1	1.0	0.9	0.8
	Q2	1.0	0.9	0.8	0.8
	Q3	1.0	0.9	0.8	0.7
	Q4	0.9	0.8	0.7	0.6
2004	Q1	0.8	0.8	0.6	0.6
	Q2	0.8	0.7	0.6	0.5
	Q3	0.7	0.7	0.6	0.5
	Q4	0.7	0.6	0.6	0.6
2005	Q1	0.7	0.6	0.6	0.5
	Q2	0.7	0.6	0.6	0.5
	Q3	0.7	0.6	0.6	0.5
	Q4	0.7	0.6	0.5	0.5
2006	Q1	0.7	0.6	0.5	0.5
	Q2	0.7	0.6	0.5	0.4
	Q3	0.7	0.6	0.5	0.4
	Q4	0.6	0.6	0.5	0.4
2007	Q1	0.6	0.6	0.5	0.5
	Q2	0.6	0.5	0.5	0.5
	Q3	0.6	0.5	0.5	0.4
	Q4	0.6	0.5	0.4	0.4
2008	Q1	0.6	0.5	0.4	0.3
	Q2	0.6	0.5	0.3	0.3
	Q3	0.6	0.5	0.3	0.3
	Q4	0.7	0.6	0.4	0.4
2009	Q1	0.8	0.7	0.4	0.4
	Q2	0.8	0.7	0.5	0.4
	Q3	0.9	0.8	0.5	0.4
	p Q4	0.9	0.8	0.4	0.4

p provisional

¹ Calculated from company liquidations in the latest twelve month period divided by the average number of companies in that period. As from Q2 2008, register figures supplied by Companies House are counted at the end of each calendar month; previously they were monthly averages.

² The total register includes companies being wound up or dormant.