

STATISTICS RELEASE: INSOLVENCIES IN THE THIRD QUARTER 2008

Statistics showing insolvencies in the third quarter of 2008 are published today (7 November) by the Insolvency Service.

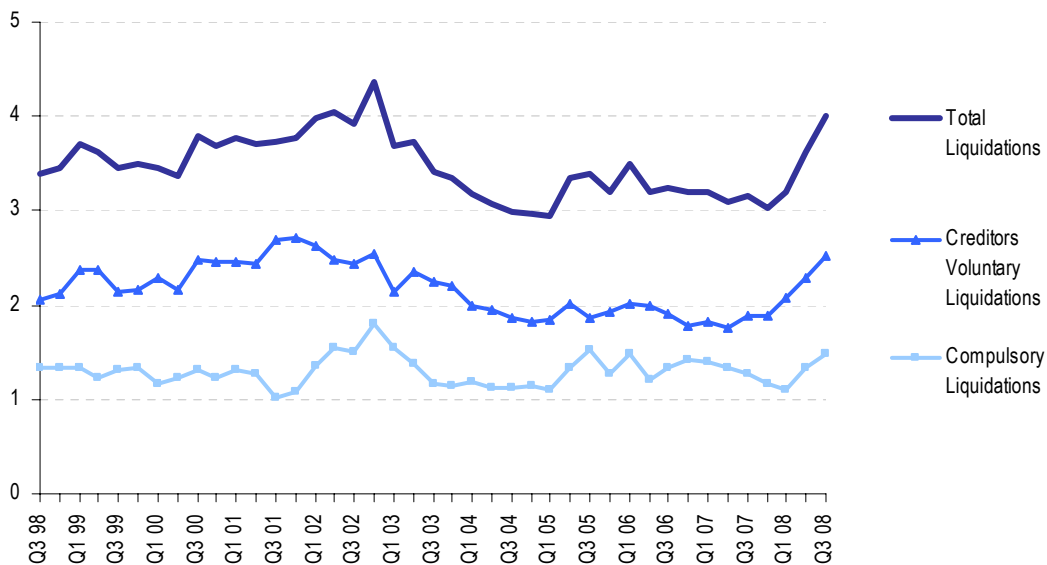
COMPANY INSOLVENCIES

There were 4,001 compulsory liquidations and creditors' voluntary liquidations in total in England and Wales in the third quarter of 2008 (on a seasonally adjusted basis). This was an increase of 10.5% on the previous quarter and an increase of 26.3% on the same period a year ago.

This was made up of 1,483 compulsory liquidations (which are up 10.9% on the previous quarter and 16.1% on the corresponding quarter of the previous year), and 2,518 creditors voluntary liquidations (which are up 10.2% on the previous quarter and 33.2% on the corresponding quarter of the previous year).

Figure 1. Company Liquidations in England & Wales

Thousands, seasonally adjusted



Source: Insolvency Service and Companies House

In the twelve months ending Q3 2008, 0.6% of active companies went into liquidation, the same as the previous quarter and the corresponding quarter of 2007.

Table I. Company Liquidations in England and Wales (seasonally adjusted) ¹

	Q3 2007	Q4 2007	Q1 2008	Q2 2008 r	Q3 2008 p	% change – Q3 2008 on	
						Q3 2007	Q2 2008
Company Liquidations	3,167	3,039	3,189	3,622	4,001	26.3	10.5
of which: Compulsory	1,277	1,162	1,106	1,337	1,483	16.1	10.9
Creditors Voluntary ²	1,890	1,877	2,084	2,285	2,518	33.2	10.2

Source: Insolvency Service and Companies House

p = provisional, r = revised

¹ Longer series back to 1998 are presented in the accompanying detailed tables.

² Where the CVL is the first insolvency procedure entered into (see Notes to Editors).

Additionally, there were 1,444 other corporate insolvencies in the third quarter of 2008 (not seasonally adjusted) comprising 270 receiverships, 1,007 administrations and 167 company voluntary arrangements. In total these represented an increase of 64.7% on the same period a year ago.

Table II. Other Corporate Insolvencies in England and Wales (not seasonally adjusted) ¹

	Q3 2007	Q4 2007	Q1 2008	Q2 2008	Q3 2008 p	% change – Q3 2008 on	
						Q3 2007	Q2 2008
Receiverships ²	80	92	159	177	270	237.5	
Administrations ³	668	575	859	938	1,007	50.7	
Company voluntary arrangements	129	91	140	131	167	29.5	

Source: Companies House

p = provisional, r = revised

¹ Longer series back to 1998 are presented in the accompanying detailed tables.

² Includes Law of Property Act receivers (see "Notes to Editors" paragraph 9).

³ Includes Administrator Appointments.

Note: The figures in Table II are not seasonally adjusted and are not, therefore, on the same basis as the headline figures in Table I. The accompanying detailed tables also include the non-seasonally adjusted series for corporate liquidations.

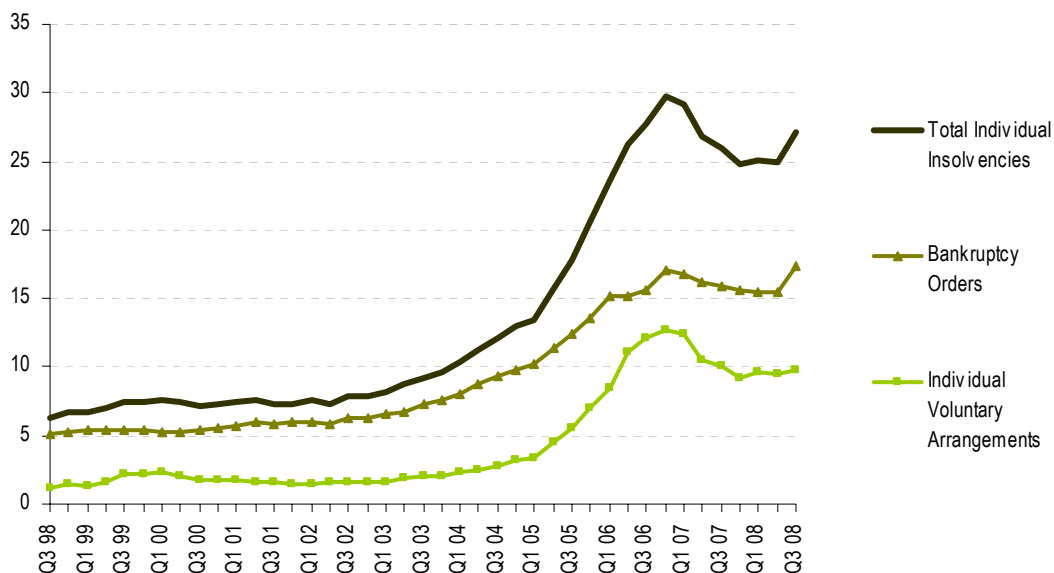
INDIVIDUAL INSOLVENCIES

There were 27,087 individual insolvencies in England and Wales in the third quarter of 2008 on a seasonally adjusted basis. This was an increase of 8.8% on the previous quarter and an increase of 4.6% on the same period a year ago.

This was made up of 17,341 bankruptcies (which were up 12.1% on the previous quarter and 9.5% on the corresponding quarter of the previous year), and 9,746 Individual Voluntary Arrangements (IVAs), (which were up 3.3% on the previous quarter but down 3.1% on the corresponding quarter of the previous year).

Figure 2. Individual insolvencies in England & Wales

Thousands, seasonally adjusted



Source: Insolvency Service

For bankruptcy orders there has been a pronounced shift towards debtor's petition bankruptcies and away from creditor's petitions in recent years. In the third quarter of 2008, 83.4% were made on the petition of the debtor, a similar level to that seen for 2006 and 2007 as a whole.

Table III. Individual Insolvencies in England and Wales (seasonally adjusted) ¹

	Q3 2007	Q4 2007	Q1 2008	Q2 2008 r	Q3 2008 p	% change – Q3 2008 on	
						Q3 2007	Q2 2008
Individuals	25,900	24,854	25,054	24,893	27,087	4.6	8.8
of which: Bankruptcies	15,842	15,636	15,492	15,463	17,341	9.5	12.1
IVAs	10,058	9,218	9,562	9,430	9,746	-3.1	3.3

Source: Insolvency Service

p = provisional, r = revised

¹ Longer series back to 1998 are presented in the accompanying detailed tables

The percentage of bankruptcy orders involving trading debts (self-employed bankruptcies) has fallen from 70% in 1990 (the earliest for which reliable figures exist) to 11.2% in the second



quarter of 2008 (third quarter 2008 figures for trading-related bankruptcies are not yet available). It should be noted, however, that figures for 2007 onwards are based on a revised classification and are not entirely consistent with earlier years figures.

INSOLVENCIES IN SCOTLAND AND NORTHERN IRELAND

The following tables present recent trends in insolvencies in Scotland and Northern Ireland, complementing those for England and Wales above (longer series back to 1998 are presented in the accompanying detailed tables).

Table IV. Insolvencies in Scotland (not seasonally adjusted)

	Q3 2007	Q4 2007	Q1 2008	Q2 2008	Q3 2008 p	% change – Q3 2008 on
						Q3 2007
Company Liquidations	125	83	102	132	127	1.6
of which: Compulsory	105	71	95	111	111	5.7
Creditors Voluntary	20	12	7	21	16	-20.0
Individuals¹	3,527	3,318	3,324 r	4,735	5,998	70.1
of which: Sequestrations ¹	1,545	1,563	1,444 r	2,853	4,055	162.5
Protected Trust Deeds	1,982	1,755	1,880	1,882	1,943	-2.0

Source: Companies House (Scotland) and Accountant in Bankruptcy (AiB)

p = provisional, r = revised

¹ The sequestration figures for 2008 Q2 onwards include LILAs (Low Income, Low Assets) cases. These were introduced as a new route into bankruptcy under the Bankruptcy and Diligence etc (Scotland) Act 2007, wef 1 April 2008.

Table V. Insolvencies in Northern Ireland (not seasonally adjusted)

	Q3 2007	Q4 2007	Q1 2008	Q2 2008	Q3 2008 p	% change – Q3 2008 on
						Q3 2007
Company Liquidations	42	48	42	57	44	4.8
of which: Compulsory	28	36	37	42	27	-3.6
Creditors Voluntary	14	12	5	15	17	21.4
Individuals	338	319	330	479	386	14.2
of which: Bankruptcies	227	225	226	331	229	0.9
IVAs	111	94	104	148	157	41.4

Source: Department for Enterprise, Trade and Investment, Northern Ireland (DETINI)

p = provisional, r = revised

Notes to Editors

1. The official Insolvency Statistics are the most comprehensive record of the number of corporate and individual insolvencies in England and Wales. Insolvencies in Scotland and Northern Ireland are also included, but are shown separately as they are covered by separate legislation, there are some differences in definition, and policy responsibility for them lies within the devolved administrations.
2. The statistics for England and Wales are derived from administrative records of the department for Business Enterprise and Regulatory Reform (BERR), Insolvency Service and Companies House Executive Agencies. For Scotland, the company insolvency statistics are derived from administrative records at Companies House, Scotland. Figures for individual insolvencies in Scotland are sourced from the Office of the Accountant in Bankruptcy (AIB). The Northern Ireland statistics are derived from administrative records of the DETI Insolvency Service and Companies Registry. Generally speaking, numbers of cases are based on the date the insolvency procedure was registered on the administrative recording system, not on the date of the order or agreement.
3. Numbers of insolvencies are not directly comparable with official estimates of business stock, formations or closures. Statistics of business start-ups and closures that are directly comparable with each other have been assembled from VAT records and are published by BERR. The latest figures are those for 2006, and were issued in a BERR press notice on 14 November 2007. More detailed figures are available via the on-line database NOMIS. Additionally, analysis into the number of firms in the United Kingdom estimated the total number of businesses at the start of 2007 at 4.7 million.
4. The X12ARIMA program (developed by Statistics Canada) is used for the seasonal adjustment of the insolvency statistics for England and Wales, this being the recommended program within UK National Statistics. Seasonal adjustment is a process by which changes that are due to seasonal or other calendar influences are removed to produce a clearer picture of the underlying behaviour of the data series. The data series covering Scotland and Northern Ireland do not demonstrate consistent seasonality and only the raw (unadjusted) series are presented.
5. Insolvent companies entering liquidation in England & Wales and Scotland are dealt with under the Insolvency Act of 1986 and, in Northern Ireland, by the Insolvency (Northern Ireland) Order 1989. They can **either** be the subject of a **compulsory liquidation** (winding-up) order obtained from the court by a creditor, shareholder or director **or** themselves pass a resolution, subject to the approval of a creditors' meeting that the company be wound up voluntarily (**creditors voluntary liquidations**, registered at Companies House/Companies Registry). In either case they are said to have been **wound-up**, and numbers are given in Tables 1, 4 and 6. A third type of winding-up, members' voluntary liquidation, is not included because it does not involve insolvency.
6. The Insolvency Act 1986 and, in Northern Ireland, the Insolvency (Northern Ireland) Order 1989 also introduced the procedures of **company administration orders** and **company voluntary arrangements (CVAs)**. The administration procedure gives a period of time during which creditors are restrained from taking action and a court appointed administrator puts forward proposals to deal with the company's financial difficulties. The CVA procedure aids business by enabling a company in financial difficulty to come to a binding agreement with its creditors. These are listed separately under Table 3 for England and Wales and Table 5 for Scotland.
7. The Enterprise Act 2002 introduced revisions to the corporate administration procedures, replacing Part II of the Insolvency Act 1986 with Schedule B1. These include the introduction of additional entry routes into administration that do not require the making of an administration order and a streamlined process for **Administrations** whereby a company can in some circumstances be dissolved without recourse to liquidation. The primary objective of

administration (and of CVAs) is the rescue of the company as a going concern. These provisions came into force on 15th September 2003 and **Administrations under the Enterprise Act** have been included on Tables 3 and 5 from Q3 2003 (dissolution follows 3 months after a notice is filed with the Registrar of Companies, if no objections are raised by the court). On 27th March 2006 the Insolvency (Northern Ireland) Order 2005 introduced similar revisions to the corporate administration procedures in Northern Ireland, replacing Part III of the Insolvency (Northern Ireland) Order 1989 with Schedule B1.

8. Since the Enterprise Act 2002, a number of these streamlined administrations have subsequently converted to a creditors' voluntary liquidation. These liquidations in England and Wales are not included under the headline figures here or at Table 1, as they do not represent a new company entering into an insolvency procedure for the first time. For completeness, however, they are included under Table 3d. It is also possible for the outcome of an administration to be entry into a company voluntary arrangement or a compulsory liquidation, but these cases are not separately identifiable from Companies House' information and will therefore be included within the new case figures for these procedures (the numbers involved are relatively few, compared to those entering CVL).

9. **Receivership appointments** comprise **administrative receivers** appointed under the 1986 Insolvency Act (and the 1989 Order for Northern Ireland) and certain **other receiver appointments, for example under the Law of Property Act 1925** - due to the use of the same statutory documentation for different types of receivership, it is not possible to give a breakdown between them. Law of Property Act receivers are classed as Enforcement of Security and are not insolvency procedures under the Insolvency Act of 1986. For this reason levels of, and trends in, receivership appointments should be interpreted with caution. The provisions of the Enterprise Act 2002 [section 250] (Insolvency [Northern Ireland] Order 2005 [Article 5]) have made some changes to the procedures for administrative receivership.

10. Figures sourced from Companies House (E&W) were revised previously (where appropriate) between 2007 Q1 and 2008 Q1. This reflected inaccuracies identified in the counting of cases during validation following the move to a new IT system in February 2008. The most noticeable revisions were to receiverships (where some companies had been counted more than once); the rest of this series prior to 2007 is not yet available on a revised basis. However, it should also be noted that because the revised counts have been run against a live database, they do not exactly reflect the original numbers of new cases that would have been reported.

11. Individual insolvencies in England and Wales and in Northern Ireland are made up of **bankruptcy orders** and **individual voluntary arrangements (IVAs)**. Insolvent individuals in England and Wales are dealt with mainly under the Insolvency Act 1986. A bankruptcy order is made on the petition of the debtor or one or more of his creditors when the court is satisfied that there is no prospect of the debt being paid. (Figures for bankruptcy orders include orders relating to the estates of deceased debtors). There are also individual voluntary arrangements (IVAs) and deeds of arrangement (the latter under the Deeds of Arrangement Act 1914), which enable debtors to come to an agreement with their creditors. Table 2 summarises the above procedures for England and Wales (IVAs and Deeds of Arrangement are included under a single column) and Table 2a provides bankruptcy orders further split by petition type. Changes to bankruptcy law in England and Wales introduced by the Enterprise Act 2002 came into force on 1 April 2004 – the Act made no changes to the existing individual voluntary arrangement regime.

12. Table 2b records numbers of Income Payments Orders (IPOs) and Income Payments Agreements (IPAs) where the bankrupt makes regular payments from surplus income towards his/her debts for a period of time, either by court order or by agreement. The figures record numbers of IPOs/IPAs made in each period, they do not, in general, relate to the date of the original bankruptcy order. Table 2b records a number of IPAs before Q2 2004 because the IPA provisions of the Enterprise Act 2002 (commenced on 1 April 2004) were applicable, upon commencement, to pre-commencement bankruptcies.



13. Insolvent individuals in Scotland (Table 4) are subject to **sequestration** (bankruptcy) or **protected trust deeds** under the Bankruptcy (Scotland) Act 1985 (as amended). This Act was amended by the Bankruptcy (Scotland) Act 1993. On April 1 2008 the Bankruptcy and Diligence etc. (Scotland) Act 2007 came into force making significant changes to some aspects of bankruptcy, debt relief and debt enforcement in Scotland. Most notably, as far as these statistics are concerned, it introduced a new route into bankruptcy for people with low income and low assets (LILA). The sequestration figures for Q2 2008 onwards include these new LILA cases; therefore trends in numbers of sequestrations before and after this date should be interpreted with care. Protected trust deeds are voluntary arrangements in Scotland, but although they fulfil much the same role as individual voluntary arrangements, there are important differences in the way they are set up and administered. Details of both sequestrations and protected trust deeds are found on the register of insolvencies, which is maintained by the Accountant in Bankruptcy. Further information about insolvency in Scotland can be found on the Accountant's website at www.aib.gov.uk. It should also be noted that from April 2008, personal insolvency statistics have been extracted from information published on the AIB website; whereas previously it was supplied on request, tailored to our publication requirements.

14. Insolvent individuals in Northern Ireland are dealt with under the Insolvency (Northern Ireland) Order 1989 and are recorded under Table 6. On 27 March 2006 the Insolvency (Northern Ireland) Order 2005 came into operation and implemented similar changes to bankruptcy procedures as the Enterprise Act 2002 introduced in England and Wales. Further information about insolvency in Northern Ireland can be found on their website at www.insolvencyservice.detini.gov.uk.

15. Under the Insolvency Act 1986 and the Insolvent Partnerships Order and, in Northern Ireland, the Insolvency (Northern Ireland) Order 1989 and the Insolvent Partnerships Order (Northern Ireland) 1995, insolvent partnerships may be wound up as an unregistered company or administered following bankruptcy orders against the partners. Insolvent Partnerships can also enter administration or a voluntary arrangement.

16. Company insolvencies and bankruptcy orders (relating to the self-employed) in England and Wales broken down by industry are available from Q3 2007 according to the Standard Industrial Classification (SIC) 2003, bringing them into line with other official statistics. Industry breakdowns for compulsory liquidations and bankruptcies (only) are only available one quarter in arrears of the headline series. Figures according to the previously used Insolvency Trade Classification (ITC) are available up to Q3 2006, but information by industry is not available for the period between Q4 2006 to Q2 2007 (inclusive) on either classification. Additionally, the broad split of bankruptcy orders into self-employed and other individuals is available under Table 2a.

17. Company liquidations in Scotland are available from Q1 2007 based on the SIC2003 industry breakdown and these can be found in Tables 4a and 4b. Earlier data are available separately classified according to the Insolvency Trade Classification (ITC).

18. Information concerning insolvency legislation, policy evaluation and research in England and Wales may be obtained from the Insolvency Service website at www.insolvency.gov.uk.

National Statistics

National Statistics are produced to high professional standards set out in the National Statistics Code of Practice. They undergo regular quality assurance reviews to ensure that they meet customer needs. They are produced free from any political interference.

You can find a range of National Statistics on the Internet – www.statistics.gov.uk



Press Enquiries:

Insolvency Service Press Office:

Lorna Dennis Tel: +44 (0)20 7637 6279

Ade Daramy Tel: +44 (0)20 7596 6187

Fax: +44 (0)20 7291 6731

Non Media Enquiries

Policy Directorate : Statistics

Gary Mills +44 (0)20 7637 6504

Martin Kenchatt +44 (0)20 7637 6314

Margaret Sims +44 (0)20 7637 6443

E-Mail:

gary.mills@insolvency.gsi.gov.uk

martin.kenchatt@insolvency.gsi.gov.uk

margaret.sims@insolvency.gsi.gov.uk

Internet:

www.insolvency.gov.uk/otherinformation/statistics/200811/uksa/

Out of hours cover

Public Enquiries +44 (0)20 7215 5000

Textphone +44 (0)20 7215 6740

(for those with hearing impairment)



1. Company liquidations¹ England & Wales

Year		Not Seasonally Adjusted			Seasonally Adjusted		
		Total	Compulsory Liquidations	Creditors' Voluntary Liquidations ²	Total	Compulsory Liquidations	Creditors' Voluntary Liquidations ²
1998		13,203	5,216	7,987			
1999		14,280	5,209	9,071			
2000		14,317	4,925	9,392			
2001		14,972	4,675	10,297			
2002		16,306	6,231	10,075			
2003		14,184	5,234	8,950			
2004		12,192	4,584	7,608			
2005		12,893	5,233	7,660			
2006		13,137	5,418	7,719			
2007		12,507	5,165	7,342			
1998	Q1	3,265	1,333	1,932	3,102	1,290	1,812
	Q2	3,251	1,312	1,939	3,251	1,258	1,993
	Q3	3,323	1,275	2,048	3,394	1,333	2,061
	Q4	3,364	1,296	2,068	3,456	1,335	2,121
1999	Q1	3,912	1,379	2,533	3,714	1,332	2,382
	Q2	3,590	1,294	2,296	3,613	1,231	2,383
	Q3	3,376	1,240	2,136	3,452	1,306	2,145
	Q4	3,402	1,296	2,106	3,501	1,340	2,161
2000	Q1	3,637	1,210	2,427	3,451	1,163	2,289
	Q2	3,370	1,300	2,070	3,379	1,220	2,159
	Q3	3,709	1,231	2,478	3,796	1,313	2,482
	Q4	3,601	1,184	2,417	3,691	1,229	2,462
2001	Q1	3,943	1,359	2,584	3,767	1,316	2,451
	Q2	3,684	1,348	2,336	3,704	1,267	2,437
	Q3	3,640	940	2,700	3,722	1,021	2,701
	Q4	3,705	1,028	2,677	3,779	1,070	2,708
2002	Q1	4,141	1,408	2,733	3,982	1,364	2,618
	Q2	4,066	1,679	2,387	4,037	1,556	2,481
	Q3	3,808	1,390	2,418	3,930	1,502	2,427
	Q4	4,291	1,754	2,537	4,357	1,808	2,549
2003	Q1	3,797	1,585	2,212	3,689	1,552	2,137
	Q2	3,767	1,470	2,297	3,737	1,378	2,359
	Q3	3,314	1,075	2,239	3,418	1,167	2,250
	Q4	3,306	1,104	2,202	3,341	1,137	2,204
2004	Q1	3,248	1,208	2,040	3,178	1,196	1,982
	Q2	3,108	1,197	1,911	3,069	1,125	1,945
	Q3	2,900	1,061	1,839	2,989	1,129	1,859
	Q4	2,936	1,118	1,818	2,956	1,134	1,822
2005	Q1	3,010	1,101	1,909	2,950	1,097	1,853
	Q2	3,407	1,422	1,985	3,355	1,345	2,010
	Q3	3,306	1,454	1,852	3,397	1,524	1,874
	Q4	3,170	1,256	1,914	3,191	1,267	1,924
2006	Q1	3,564	1,473	2,091	3,501	1,478	2,023
	Q2	3,235	1,263	1,972	3,198	1,198	2,000
	Q3	3,172	1,286	1,886	3,241	1,332	1,909
	Q4	3,166	1,396	1,770	3,196	1,410	1,787
2007	Q1	3,274	1,384	1,890	3,207	1,392	1,815
	Q2	3,191	1,399	1,792	3,095	1,334	1,760
	Q3	3,113	1,234	1,879	3,167	1,277	1,890
	Q4	2,929	1,148	1,781	3,039	1,162	1,877
2008	Q1	3,262	1,080	2,182	3,189	1,106	2,084
	Q2	3,689	1,410	2,279	r 3,622	r 1,337	r 2,285
	p Q3	4,059	1,467	2,592	4,001	1,483	2,518
Percentage change, latest quarter on previous quarter							
2008	Q3	10.0	4.0	13.7	10.5	10.9	10.2
Percentage change, latest quarter on corresponding quarter of previous year							
2008	Q3	30.4	18.9	37.9	26.3	16.1	33.2

p Provisional.

r Revised, reflecting routine updates to the seasonally adjusted series.

¹ Including partnerships.

² Where the Creditors' Voluntary Liquidation is the first Insolvency procedure entered into (see "Notes to Editors" paragraph 8).

1a. Compulsory liquidations by industry (SIC 2003)^{1,4}

England & Wales

Section	Sub-section	2 digit	3 digit	2007 ³		2008		
				Q3	Q4	Q1	Q2	Q3
Section A			AGRICULTURE, HUNTING AND FORESTRY	7	4	13	5	..
Section B			FISHING	0	3	0	3	..
Section C			MINING AND QUARRYING	2	2	5	2	..
Section D			MANUFACTURING					
	DA		Food products, beverages and tobacco	2	9	2	2	..
	DB		Textiles and textile products	7	9	5	6	..
	DC		Leather and leather products	0	0	0	0	..
	DD		Wood and wood products	3	5	10	7	..
	DE		Pulp, paper and paper products publishing and printing	9	8	7	11	..
	DF		Coke, refined petroleum products and nuclear fuel	1	1	0	0	..
	DG		Chemicals, chemical products and man-made fibres	1	1	1	1	..
	DH		Rubber and plastic products	1	6	5	4	..
	DI		Other non-metallic mineral products	6	3	2	6	..
	DJ		Basic metals and fabricated metal products	10	13	14	23	..
	DK		Machinery and equipment not elsewhere classified	5	5	6	5	..
	DL		Electrical and optical equipment	5	8	0	6	..
	DM		Transport equipment	3	4	3	3	..
	DN		Not elsewhere classified	10	8	6	10	..
			Total	63	80	61	84	..
Section E			ELECTRICITY, GAS AND WATER SUPPLY	7	6	9	11	..
Section F	45		CONSTRUCTION					
	451		Site preparation	19	23	23	28	..
	452		Building of complete constructions or parts thereof; civil engineering	81	62	83	91	..
	453		Building installation	44	50	40	63	..
	454		Building completion	55	58	60	75	..
	455		Renting of construction or demolition equipment with operator	3	4	3	6	..
			Total	202	197	209	263	..
Section G			WHOLESALE AND RETAIL TRADE; REPAIR OF MOTOR VEHICLES, MOTOR CYCLES AND PERSONAL AND HOUSEHOLD GOODS					
	50		Sale, maintenance and repair of motor vehicles and motorcycles; retail sale of automotive fuel	20	23	22	17	..
	51		Wholesale trade and commission trade, except of motor vehicles and motorcycles	86	80	83	87	..
	52		Retail trade, except of motor vehicles and motorcycles; repair of personal and household goods	72	69	74	87	..
			Total	178	172	179	191	..
Section H	55		HOTELS AND RESTAURANTS					
	551		Hotels	6	8	7	12	..
	553		Restaurants	42	28	27	29	..
	554		Bars	38	37	38	37	..
			Other	7	4	3	9	..
			Total	93	77	75	87	..
Section I			TRANSPORT, STORAGE AND COMMUNICATION					
	60		Land transport; transport via pipelines	21	35	37	29	..
	61		Water transport	1	3	2	1	..
	62		Air transport	3	0	1	0	..
	63		Supporting and auxiliary transport activities; activities of travel agencies	23	23	25	24	..
	64		Post and telecommunications	36	31	18	38	..
			Total	84	92	83	92	..
Section J			FINANCIAL INTERMEDIATION					
	66		Insurance and pension funding, except compulsory social security	2	3	2	2	..
			Other	30	36	23	26	..
			Total	32	39	25	28	..
Section K			REAL ESTATE, RENTING AND BUSINESS ACTIVITIES					
	70		Real estate activities	41	26	38	56	..
	71		Renting of machinery and equipment without operator and of personal and household goods	2	0	2	0	..
	72		Computer and related activities	11	16	16	24	..
	73		Research and development	1	0	0	0	..
	74		Other business activities	52	60	66	79	..
			Total	107	102	122	159	..
Section L			PUBLIC ADMINISTRATION AND DEFENCE; COMPULSORY SOCIAL SECURITY	4	3	1	3	..
Section M			EDUCATION	16	10	12	14	..
Section N			HEALTH AND SOCIAL WORK	10	17	13	14	..
Section O			OTHER COMMUNITY, SOCIAL & PERSONAL SERVICE ACTIVITIES	108	80	84	82	..
Section P			PRIVATE HOUSEHOLDS EMPLOYING STAFF AND UNDIFFERENTIATED PRODUCTION ACTIVITIES OF HOUSEHOLDS FOR OWN USE	2	0	1	0	..
Section Q			EXTRA-TERRITORIAL ORGANISATIONS AND BODIES	1	4	3	2	..
ALL OTHERS ²				355	362	332	436	..
Total				1,271	1,250	1,227	1,476	..

.. Not yet available

¹ The Standard Industrial Classification (SIC 2003) definitions can be found at [http://www.statistics.gov.uk/methods_quality/sic/downloads/UK_SIC_Vol1\(2003\).pdf](http://www.statistics.gov.uk/methods_quality/sic/downloads/UK_SIC_Vol1(2003).pdf)

² Unknown SIC

³ An industry breakdown according to the previously used Insolvency Trade Classifications (ITC) is available up to Q3 2006 at <http://www.insolvency.gov.uk/otherinformation/statistics/200702/table4.htm>. The period from Q4 2006 to Q2 2007 is not available broken down by industry.

⁴ Totals for compulsory liquidations here are not the same as the headline figures under Table 1. This is because the industrial breakdown has been compiled from a specially selected extract from the live database, whereas the headline figures are produced monthly using a different reporting system.

1b. Creditors' Voluntary Liquidations by industry (SIC 2003)^{1,3}

England & Wales

Section	Sub-section 2 digit 3 digit		2007		2008		
			Q3	Q4	Q1	Q2	Q3 p
Section A		AGRICULTURE, HUNTING AND FORESTRY	3	5	7	11	9
Section B		FISHING	0	0	0	0	1
Section C		MINING AND QUARRYING	0	1	0	1	3
Section D		MANUFACTURING					
	DA	Food products, beverages and tobacco	14	7	10	13	16
	DB	Textiles and textile products	23	19	17	26	29
	DC	Leather and leather products	0	2	0	1	2
	DD	Wood and wood products	18	13	11	24	21
	DE	Pulp, paper and paper products publishing and printing	51	52	54	47	69
	DF	Coke, refined petroleum products and nuclear fuel	0	0	1	0	0
	DG	Chemicals, chemical products and man-made fibres	4	1	6	1	10
	DH	Rubber and plastic products	5	21	18	18	13
	DI	Other non-metallic mineral products	9	12	9	10	13
	DJ	Basic metals and fabricated metal products	53	32	51	37	64
	DK	Machinery and equipment not elsewhere classified	12	12	12	14	9
	DL	Electrical and optical equipment	20	10	16	17	18
	DM	Transport equipment	7	5	6	8	8
	DN	Not elsewhere classified	46	36	55	51	42
		Total	262	222	266	267	314
Section E		ELECTRICITY, GAS AND WATER SUPPLY	1	3	2	0	2
Section F	45	CONSTRUCTION					
	451	Site preparation	7	8	3	7	5
	452	Building of complete constructions or parts thereof; civil engineering	118	143	171	164	206
	453	Building installation	76	77	101	117	123
	454	Building completion	68	72	69	81	89
	455	Renting of construction or demolition equipment with operator	1	3	2	3	7
		Total	270	303	346	372	430
Section G		WHOLESALE AND RETAIL TRADE; REPAIR OF MOTOR VEHICLES, MOTOR CYCLES AND PERSONAL AND HOUSEHOLD GOODS					
	50	Sale, maintenance and repair of motor vehicles and motorcycles; retail sale of automotive fuel	44	52	58	57	67
	51	Wholesale trade and commission trade, except of motor vehicles and motorcycles	113	103	133	148	141
	52	Retail trade, except of motor vehicles and motorcycles; repair of personal and household goods	143	143	190	209	213
		Total	300	298	381	414	421
Section H	55	HOTELS AND RESTAURANTS					
	551	Hotels	10	8	3	11	13
	553	Restaurants	68	79	55	80	98
	554	Bars	26	30	40	47	31
		Other	12	18	14	21	17
		Total	116	135	112	159	159
Section I		TRANSPORT, STORAGE AND COMMUNICATION					
	60	Land transport; transport via pipelines	43	35	54	54	63
	61	Water transport	1	0	2	0	1
	62	Air transport	0	2	3	0	2
	63	Supporting and auxiliary transport activities; activities of travel agencies	20	20	19	20	31
	64	Post and telecommunications	32	22	23	28	27
		Total	96	79	101	102	124
Section J		FINANCIAL INTERMEDIATION					
	66	Insurance and pension funding, except compulsory social security	2	7	4	4	5
		Other	16	8	16	22	38
		Total	18	15	20	26	43
Section K		REAL ESTATE, RENTING AND BUSINESS ACTIVITIES					
	70	Real estate activities	45	40	51	63	106
	71	Renting of machinery and equipment without operator and of personal and household goods	9	9	8	17	6
	72	Computer and related activities	76	69	82	85	78
	73	Research and development	2	4	5	1	4
	74	Other business activities	399	336	467	436	513
		Total	531	458	613	602	707
Section L		PUBLIC ADMINISTRATION AND DEFENCE; COMPULSORY SOCIAL SECURITY	5	2	2	4	1
Section M		EDUCATION	12	11	13	15	17
Section N		HEALTH AND SOCIAL WORK	14	14	15	23	18
Section O		OTHER COMMUNITY, SOCIAL & PERSONAL SERVICE ACTIVITIES	112	107	126	115	145
Section P		PRIVATE HOUSEHOLDS EMPLOYING STAFF AND UNDIFFERENTIATED PRODUCTION ACTIVITIES OF HOUSEHOLDS FOR OWN USE	1	3	2	2	1
Section Q		EXTRA-TERRITORIAL ORGANISATIONS AND BODIES	0	0	2	0	1
ALL OTHERS ²			138	125	174	166	196
Total			1,879	1,781	2,182	2,279	2,592

p Provisional.

¹ The Standard Industrial Classification (SIC 2003) definitions can be found at [http://www.statistics.gov.uk/methods_quality/sic/downloads/UK_SIC_Vol1\(2003\).pdf](http://www.statistics.gov.uk/methods_quality/sic/downloads/UK_SIC_Vol1(2003).pdf)

² Including unknown or invalid SIC codes and non-trading or dormant companies

³ Where the Creditors Voluntary Liquidation is the first insolvency procedure entered into (see "Notes to Editors" paragraph 8).

2. Individual insolvencies England & Wales

Year	Not Seasonally Adjusted			Seasonally Adjusted			
	Total	Bankruptcy Orders	Individual Voluntary Arrangements ¹	Total	Bankruptcy Orders	Individual Voluntary Arrangements ¹	
1998	24,549	19,647	4,902				
1999	28,806	21,611	7,195				
2000	29,528	21,550	7,978				
2001	29,775	23,477	6,298				
2002	30,587	24,292	6,295				
2003	35,604	28,021	7,583				
2004	46,650	35,898	10,752				
2005	67,584	47,291	20,293				
2006	107,288	62,956	44,332				
2007	106,645	64,480	42,165				
1998	Q1	5,953	4,938	1,015	5,694	4,612	1,082
	Q2	5,855	4,755	1,100	5,779	4,676	1,103
	Q3	6,380	5,113	1,267	6,299	5,088	1,211
	Q4	6,361	4,841	1,520	6,778	5,272	1,506
1999	Q1	7,025	5,799	1,226	6,760	5,436	1,324
	Q2	7,120	5,527	1,593	7,053	5,446	1,607
	Q3	7,592	5,365	2,227	7,493	5,356	2,138
	Q4	7,069	4,920	2,149	7,500	5,374	2,127
2000	Q1	7,837	5,667	2,170	7,639	5,316	2,323
	Q2	7,532	5,414	2,118	7,418	5,318	2,100
	Q3	7,316	5,451	1,865	7,208	5,440	1,768
	Q4	6,843	5,018	1,825	7,264	5,476	1,788
2001	Q1	7,750	6,078	1,672	7,496	5,707	1,788
	Q2	7,714	6,115	1,599	7,576	5,995	1,581
	Q3	7,434	5,817	1,617	7,348	5,808	1,540
	Q4	6,877	5,467	1,410	7,356	5,967	1,389
2002	Q1	7,411	6,027	1,384	7,511	6,019	1,492
	Q2	7,861	6,269	1,592	7,343	5,769	1,575
	Q3	7,892	6,249	1,643	7,815	6,246	1,569
	Q4	7,423	5,747	1,676	7,918	6,259	1,659
2003	Q1	8,426	6,912	1,514	8,145	6,502	1,643
	Q2	8,889	6,948	1,941	8,684	6,764	1,920
	Q3	9,291	7,221	2,070	9,202	7,223	1,979
	Q4	8,998	6,940	2,058	9,573	7,532	2,041
2004	Q1	10,665	8,524	2,141	10,330	8,008	2,322
	Q2	11,535	9,060	2,475	11,250	8,810	2,440
	Q3	12,227	9,315	2,912	12,122	9,342	2,779
	Q4	12,223	8,999	3,224	12,948	9,737	3,211
2005	Q1	13,190	10,188	3,002	13,424	10,137	3,286
	Q2	16,873	12,338	4,535	15,805	11,318	4,487
	Q3	18,010	12,256	5,754	17,857	12,330	5,528
	Q4	19,511	12,509	7,002	20,498	13,506	6,992
2006	Q1	23,939	16,283	7,656	23,680	15,235	8,445
	Q2	26,722	15,489	11,233	26,210	15,115	11,095
	Q3	28,083	15,418	12,665	27,682	15,568	12,114
	Q4	28,544	15,766	12,778	29,715	17,038	12,678
2007	Q1	29,236	17,937	11,299	29,116	16,788	12,328
	Q2	27,327	16,489	10,838	26,774	16,214	10,561
	Q3	26,252	15,600	10,652	25,900	15,842	10,058
	Q4	23,830	14,454	9,376	24,854	15,636	9,218
2008	Q1	24,619	15,814	8,805	25,054	15,492	9,562
	Q2	r 25,966	16,373	r 9,593	r 24,893	r 15,463	r 9,430
	p Q3	27,488	17,237	10,251	27,087	17,341	9,746
Percentage change, latest quarter on previous quarter							
2008	Q3	5.9	5.3	6.9	8.8	12.1	3.3
Percentage change, latest quarter on corresponding quarter of previous year							
2008	Q3	4.7	10.5	-3.8	4.6	9.5	-3.1

p Provisional.

r Revised, reflecting amendments to raw data or routine updates to the seasonally adjusted series.

¹ Including Deeds of Arrangements

2a. Bankruptcy orders by petition type and trading status England & Wales

not seasonally adjusted

Year	Bankruptcy Orders	Debtor's petitions		Creditor's petitions		Bankruptcy Orders	Self-employed ¹		Other individuals ¹		
		count	%	count	%		count	%	count	%	
1998	19,647	10,497	53.4	9,150	46.6	19,647	10,420	53.0	9,227	47.0	
1999	21,611	12,327	57.0	9,284	43.0	21,611	10,723	49.6	10,888	50.4	
2000	21,550	13,312	61.8	8,238	38.2	21,550	9,952	46.2	11,598	53.8	
2001	23,477	15,514	66.1	7,963	33.9	23,477	9,839	41.9	13,638	58.1	
2002	24,292	16,955	69.8	7,337	30.2	24,292	8,854	36.4	15,438	63.6	
2003	28,021	19,882	71.0	8,139	29.0	28,021	9,139	32.6	18,882	67.4	
2004	35,898	27,872	77.6	8,026	22.4	35,898	9,564	26.6	26,334	73.4	
2005	47,291	38,131	80.6	9,160	19.4	47,291	10,839	22.9	36,452	77.1	
2006	62,956	53,038	84.2	9,918	15.8	62,956	10,894	17.3	52,062	82.7	
2007	64,480	54,433	84.4	10,047	15.6	64,480	7,058	10.9	57,422	89.1	
1998	Q1	4,938	2,771	56.1	2,167	43.9	4,938	2,637	53.4	2,301	46.6
	Q2	4,755	2,476	52.1	2,279	47.9	4,755	2,521	53.0	2,234	47.0
	Q3	5,113	2,613	51.1	2,500	48.9	5,113	2,672	52.3	2,441	47.7
	Q4	4,841	2,637	54.5	2,204	45.5	4,841	2,590	53.5	2,251	46.5
1999	Q1	5,799	3,336	57.5	2,463	42.5	5,799	2,996	51.7	2,803	48.3
	Q2	5,527	3,096	56.0	2,431	44.0	5,527	2,721	49.2	2,806	50.8
	Q3	5,365	3,102	57.8	2,263	42.2	5,365	2,614	48.7	2,751	51.3
	Q4	4,920	2,793	56.8	2,127	43.2	4,920	2,392	48.6	2,528	51.4
2000	Q1	5,667	3,554	62.7	2,113	37.3	5,667	2,571	45.4	3,096	54.6
	Q2	5,414	3,276	60.5	2,138	39.5	5,414	2,519	46.5	2,895	53.5
	Q3	5,451	3,292	60.4	2,159	39.6	5,451	2,518	46.2	2,933	53.8
	Q4	5,018	3,190	63.6	1,828	36.4	5,018	2,344	46.7	2,674	53.3
2001	Q1	6,078	3,987	65.6	2,091	34.4	6,078	2,666	43.9	3,412	56.1
	Q2	6,115	3,890	63.6	2,225	36.4	6,115	2,609	42.7	3,506	57.3
	Q3	5,817	3,889	66.9	1,928	33.1	5,817	2,414	41.5	3,403	58.5
	Q4	5,467	3,748	68.6	1,719	31.4	5,467	2,150	39.3	3,317	60.7
2002	Q1	6,027	4,223	70.1	1,804	29.9	6,027	2,261	37.5	3,766	62.5
	Q2	6,269	4,333	69.1	1,936	30.9	6,269	2,235	35.7	4,034	64.3
	Q3	6,249	4,374	70.0	1,875	30.0	6,249	2,244	35.9	4,005	64.1
	Q4	5,747	4,025	70.0	1,722	30.0	5,747	2,114	36.8	3,633	63.2
2003	Q1	6,912	4,892	70.8	2,020	29.2	6,912	2,468	35.7	4,444	64.3
	Q2	6,948	4,851	69.8	2,097	30.2	6,948	2,267	32.6	4,681	67.4
	Q3	7,221	5,148	71.3	2,073	28.7	7,221	2,296	31.8	4,925	68.2
	Q4	6,940	4,991	71.9	1,949	28.1	6,940	2,108	30.4	4,832	69.6
2004	Q1	8,524	6,472	75.9	2,052	24.1	8,524	2,437	28.6	6,087	71.4
	Q2	9,060	7,028	77.6	2,032	22.4	9,060	2,455	27.1	6,605	72.9
	Q3	9,315	7,236	77.7	2,079	22.3	9,315	2,300	24.7	7,015	75.3
	Q4	8,999	7,136	79.3	1,863	20.7	8,999	2,372	26.4	6,627	73.6
2005	Q1	10,188	8,219	80.7	1,969	19.3	10,188	2,446	24.0	7,742	76.0
	Q2	12,338	9,840	79.8	2,498	20.2	12,338	2,835	23.0	9,503	77.0
	Q3	12,256	9,902	80.8	2,354	19.2	12,256	2,850	23.3	9,406	76.7
	Q4	12,509	10,170	81.3	2,339	18.7	12,509	2,708	21.6	9,801	78.4
2006	Q1	16,283	13,492	82.9	2,791	17.1	16,283	3,150	19.3	13,133	80.7
	Q2	15,489	13,086	84.5	2,403	15.5	15,489	2,898	18.7	12,591	81.3
	Q3	15,418	13,036	84.6	2,382	15.4	15,418	2,990	19.4	12,428	80.6
	Q4	15,766	13,424	85.1	2,342	14.9	15,766	1,856	11.8	13,910	88.2
2007	Q1	17,937	15,356	85.6	2,581	14.4	17,937	1,981	11.0	15,956	89.0
	Q2	16,489	13,923	84.4	2,566	15.6	16,489	1,767	10.7	14,722	89.3
	Q3	15,600	13,173	84.4	2,427	15.6	15,600	1,660	10.6	13,940	89.4
	Q4	14,454	11,981	82.9	2,473	17.1	14,454	1,650	11.4	12,804	88.6
2008	Q1	15,814	13,275	83.9	2,539	16.1	15,814	1,915	12.1	13,899	87.9
	Q2	16,373	13,754	84.0	2,619	16.0	16,373	1,828	11.2	14,545	88.8
	Q3	17,237	14,369	83.4	2,868	16.6	17,237

p Provisional.

.. Not yet available

¹ Changes have been made to the part of the database used to capture information on trading status and industry codes. From 2006 Q4, "self-employed" includes the categories "self-employed"; "trader but failure not as a result of trading" and "trading partnership" and "other individuals" includes "non-trading"; "non-surrender" and "unknown". The breakdown by trading status from Q4 2006 should not therefore be considered to be entirely consistent with that for the earlier period.

2b. Income payments¹

England & Wales

not seasonally adjusted

Year	Total	Income Payments Orders	Income Payments Agreements
1998	:
1999	2,451	2,451	:
2000	2,346	2,346	:
2001	2,396	2,396	:
2002	2,322	2,322	:
2003	2,812	2,720	92
2004	6,238	1,238	5,000
2005	9,102	69	9,033
2006	11,990	86	11,904
2007	13,332	77	13,255
1998			
Q1	:
Q2	506	506	:
Q3	648	648	:
Q4	621	621	:
1999			
Q1	522	522	:
Q2	543	543	:
Q3	690	690	:
Q4	696	696	:
2000			
Q1	486	486	:
Q2	540	540	:
Q3	652	652	:
Q4	668	668	:
2001			
Q1	565	565	:
Q2	458	458	:
Q3	710	710	:
Q4	663	663	:
2002			
Q1	565	565	:
Q2	458	458	:
Q3	630	630	:
Q4	669	669	:
2003			
Q1	464	462	2
Q2	444	432	12
Q3	917	885	32
Q4	987	941	46
2004			
Q1	783	709	74
Q2	1,257	413	844
Q3	2,140	90	2,050
Q4	2,058	26	2,032
2005			
Q1	1,430	25	1,405
Q2	1,882	11	1,871
Q3	2,900	12	2,888
Q4	2,890	21	2,869
2006			
Q1	1,973	29	1,944
Q2	2,532	21	2,511
Q3	3,798	20	3,778
Q4	3,687	16	3,671
2007			
Q1	2,483	23	2,460
Q2	2,895	27	2,868
Q3	4,244	11	4,233
Q4	3,710	16	3,694
2008			
Q1	2,169	18	2,151
Q2	2,490	11	2,479
p Q3	3,622	15	3,607

p Provisional

: Not applicable

.. Not available

¹ See "Notes to Editors" paragraph 12.

2c. Trading-related bankruptcies by industry (SIC 2003)^{1,4} England & Wales

		not seasonally adjusted					
Section	Sub-section 2 digit 3 digit		2007 ³		2008		
			Q3	Q4	Q1	Q2	Q3 p
Section A		AGRICULTURE, HUNTING AND FORESTRY	43	35	31	39	..
Section B		FISHING	3	5	4	2	..
Section C		MINING AND QUARRYING	0	5	1	0	..
Section D		MANUFACTURING					
	DA	Food products, beverages and tobacco	0	0	2	1	..
	DB	Textiles and textile products	2	7	7	6	..
	DC	Leather and leather products	0	0	0	0	..
	DD	Wood and wood products	3	8	12	8	..
	DE	Pulp, paper and paper products publishing and printing	4	5	5	4	..
	DF	Coke, refined petroleum products and nuclear fuel	0	0	1	0	..
	DG	Chemicals, chemical products and man-made fibres	1	0	0	0	..
	DH	Rubber and plastic products	2	1	1	1	..
	DI	Other non-metallic mineral products	3	6	0	2	..
	DJ	Basic metals and fabricated metal products	7	2	8	4	..
	DK	Machinery and equipment not elsewhere classified	3	3	1	2	..
	DL	Electrical and optical equipment	1	1	0	1	..
	DM	Transport equipment	0	1	4	2	..
	DN	Not elsewhere classified	7	6	9	4	..
		Total	33	40	50	35	..
Section E		ELECTRICITY, GAS AND WATER SUPPLY	29	16	36	21	..
Section F	45	CONSTRUCTION					
	451	Site preparation	58	51	58	65	..
	452	Building of complete constructions or parts thereof, civil engineering	73	72	99	80	..
	453	Building installation	111	96	120	106	..
	454	Building completion	133	157	189	178	..
	455	Renting of construction or demolition equipment with operator	4	2	4	0	..
		Total	379	378	470	429	..
Section G		WHOLESALE AND RETAIL TRADE; REPAIR OF MOTOR VEHICLES, MOTOR CYCLES AND PERSONAL AND HOUSEHOLD GOODS					
	50	Sale, maintenance and repair of motor vehicles and motorcycles; retail sale of automotive fuel	43	57	52	45	..
	51	Wholesale trade and commission trade, except of motor vehicles and motorcycles	48	56	59	65	..
	52	Retail trade, except of motor vehicles and motorcycles; repair of personal and household goods	204	180	215	194	..
		Total	295	293	326	304	..
Section H	55	HOTELS AND RESTAURANTS					
	551	Hotels	7	11	14	6	..
	553	Restaurants	39	36	38	40	..
	554	Bars	96	124	139	167	..
		Other	21	16	17	19	..
		Total	163	187	208	232	..
Section I		TRANSPORT, STORAGE AND COMMUNICATION					
	60	Land transport; transport via pipelines	155	135	179	166	..
	61	Water transport	0	1	1	3	..
	62	Air transport	0	2	0	1	..
	63	Supporting and auxiliary transport activities; activities of travel agencies	44	43	52	52	..
	64	Post and telecommunications	30	32	47	42	..
		Total	229	213	279	264	..
Section J		FINANCIAL INTERMEDIATION					
	66	Insurance and pension funding, except compulsory social security	3	0	0	0	..
		Other	29	37	26	36	..
		Total	32	37	26	36	..
Section K		REAL ESTATE, RENTING AND BUSINESS ACTIVITIES					
	70	Real estate activities	19	11	17	30	..
	71	Renting of machinery and equipment without operator and of personal and household goods	4	0	1	2	..
	72	Computer and related activities	9	8	7	6	..
	73	Research and development	0	0	0	0	..
	74	Other business activities	45	46	64	42	..
		Total	77	65	89	80	..
Section L		PUBLIC ADMINISTRATION AND DEFENCE; COMPULSORY SOCIAL SECURITY	3	2	2	3	..
Section M		EDUCATION	20	17	25	14	..
Section N		HEALTH AND SOCIAL WORK	30	47	34	41	..
Section O		OTHER COMMUNITY, SOCIAL & PERSONAL SERVICE ACTIVITIES	283	283	309	302	..
Section P		PRIVATE HOUSEHOLDS EMPLOYING STAFF AND UNDIFFERENTIATED PRODUCTION ACTIVITIES OF HOUSEHOLDS FOR OWN USE	2	6	3	5	..
Section Q		EXTRA-TERRITORIAL ORGANISATIONS AND BODIES	0	3	2	0	..
ALL OTHERS ²			21	10	21	19	..
Total			1,642	1,642	1,916	1,826	..

.. Not yet available

¹ The Standard Industrial Classification (SIC 2003) definitions can be found at [http://www.statistics.gov.uk/methods_quality/sic/downloads/UK_SIC_Vol1\(2003\).pdf](http://www.statistics.gov.uk/methods_quality/sic/downloads/UK_SIC_Vol1(2003).pdf)

² Unknown SIC

³ An industry breakdown according to the previously used Insolvency Trade Classifications (ITC) is available up to Q3 2006 at <http://www.insolvency.gov.uk/otherinformation/statistics/200702/table5.htm>. The period from Q4 2006 to Q2 2007 is not available broken down by industry.

⁴ Totals for trading-related bankruptcies here are not entirely consistent with the headline figures under Table 2a. This is because the industrial breakdown has been compiled from a specially selected extract from the live database, whereas the headline figures are produced monthly using a different reporting system.

3. Receiverships, Administrations and Company Voluntary Arrangements¹ England & Wales

not seasonally adjusted

Year	Receivership Appointments ²	Administrator Appointments ³	In Administration (Enterprise Act 2002) ^{3,4}	Company Voluntary Arrangements	
1998	1,713	338	:	470	
1999	1,618	440	:	475	
2000	1,595	438	:	557	
2001	1,914	698	:	597	
2002	1,541	643	:	651	
2003	1,261	497	247	726	
2004	864	1	1,601	597	
2005	590	4	2,257	604	
2006	588	0	3,560	534	
2007	337	3	2,509	418	
1998					
Q1	516	85	:	54	
Q2	395	46	:	127	
Q3	443	105	:	153	
Q4	359	102	:	136	
1999					
Q1	419	193	:	106	
Q2	397	81	:	128	
Q3	375	64	:	120	
Q4	427	102	:	121	
2000					
Q1	454	89	:	124	
Q2	429	135	:	160	
Q3	355	101	:	121	
Q4	357	113	:	152	
2001					
Q1	649	125	:	132	
Q2	435	141	:	163	
Q3	369	146	:	141	
Q4	461	286	:	161	
2002					
Q1	455	176	:	151	
Q2	346	151	:	151	
Q3	377	162	:	181	
Q4	363	154	:	168	
2003					
Q1	315	160	:	178	
Q2	298	167	:	165	
Q3	334	154	14	171	
Q4	314	16	233	212	
2004					
Q1	224	1	331	176	
Q2	199	0	392	154	
Q3	203	0	421	137	
Q4	238	0	457	130	
2005					
Q1	114	0	489	179	
Q2	167	4	568	183	
Q3	170	0	620	130	
Q4	139	0	580	112	
2006					
Q1	180	0	753	124	
Q2	153	0	653	147	
Q3	93	0	675	157	
Q4	162	0	1,479	106	
2007					
Q1	88	1	683	96	
Q2	77	0	585	102	
Q3	80	2	666	129	
Q4	92	0	575	91	
2008					
Q1	159	1	858	140	
Q2	177	0	938	131	
p Q3	270	1	1,006	167	
Percentage change, latest quarter on corresponding quarter of previous year					
2008	Q3	237.5	-50.0	51.1	29.5

p Provisional

: Not applicable

¹ Registered at Companies House

² Includes Law of Property Act receiverships (see "Notes to Editors" Paragraph 9). Receivership figures from Q1 2007 are not consistent with those for the earlier period; re-run figures from 1998-2006 inclusive are awaited from Companies House (see "Notes to Editors" paragraph 10)

³ See paragraph 7 of the Press Release "Notes to Editors" for changes wef 15 September 2003 under the Enterprise Act 2002

⁴ The figure for Q4 2006 includes 844 separate, limited companies created and managed by "Safe Solutions Accountancy Limited" for which Grant Thornton was appointed administrator.

3a. Receiverships by industry (SIC 2003)¹ England & Wales

not seasonally adjusted

Section	Sub-section 2 digit 3 digit		2007		2008		
			Q3	Q4	Q1	Q2	Q3 p
Section A		AGRICULTURE, HUNTING AND FORESTRY	2	0	1	0	0
Section B		FISHING	0	0	0	0	0
Section C		MINING AND QUARRYING	0	1	0	0	0
Section D		MANUFACTURING					
	DA	Food products, beverages and tobacco	0	1	1	0	1
	DB	Textiles and textile products	1	0	1	0	1
	DC	Leather and leather products	0	0	0	0	0
	DD	Wood and wood products	0	0	0	1	0
	DE	Pulp, paper and paper products publishing and printing	0	1	1	2	2
	DF	Coke, refined petroleum products and nuclear fuel	0	0	0	0	0
	DG	Chemicals, chemical products and man-made fibres	0	0	0	1	1
	DH	Rubber and plastic products	0	2	0	1	0
	DI	Other non-metallic mineral products	0	0	0	0	0
	DJ	Basic metals and fabricated metal products	0	2	2	1	1
	DK	Machinery and equipment not elsewhere classified	1	2	3	0	0
	DL	Electrical and optical equipment	1	0	0	1	0
	DM	Transport equipment	1	1	0	0	0
	DN	Not elsewhere classified	5	2	0	3	0
		Total	9	11	8	10	6
Section E		ELECTRICITY, GAS AND WATER SUPPLY	0	0	0	0	0
Section F	45	CONSTRUCTION					
	451	Site preparation	0	0	0	0	1
	452	Building of complete constructions or parts thereof; civil engineering	7	5	14	17	23
	453	Building installation	0	0	2	1	1
	454	Building completion	0	2	4	4	4
	455	Renting of construction or demolition equipment with operator	0	0	0	0	0
		Total	7	7	20	22	29
Section G		WHOLESALE AND RETAIL TRADE; REPAIR OF MOTOR VEHICLES, MOTOR CYCLES AND PERSONAL AND HOUSEHOLD GOODS					
	50	Sale, maintenance and repair of motor vehicles and motorcycles; retail sale of automotive fuel	3	0	2	5	7
	51	Wholesale trade and commission trade, except of motor vehicles and motorcycles	1	1	4	3	5
	52	Retail trade, except of motor vehicles and motorcycles; repair of personal and household goods	0	2	1	2	0
		Total	4	3	7	10	12
Section H	55	HOTELS AND RESTAURANTS					
	551	Hotels	2	1	3	2	0
	553	Restaurants	6	0	2	2	0
	554	Bars	3	0	0	2	2
		Other	0	0	0	0	2
		Total	11	1	5	6	4
Section I		TRANSPORT, STORAGE AND COMMUNICATION					
	60	Land transport; transport via pipelines	0	0	1	0	0
	61	Water transport	0	0	0	0	0
	62	Air transport	0	1	0	0	0
	63	Supporting and auxiliary transport activities; activities of travel agencies	0	0	1	1	0
	64	Post and telecommunications	0	1	0	2	0
		Total	0	2	2	3	0
Section J		FINANCIAL INTERMEDIATION					
	66	Insurance and pension funding, except compulsory social security	0	1	0	0	1
		Other	0	1	3	5	4
		Total	0	2	3	5	5
Section K		REAL ESTATE, RENTING AND BUSINESS ACTIVITIES					
	70	Real estate activities	23	36	76	74	151
	71	Renting of machinery and equipment without operator and of personal and household goods	1	1	0	0	1
	72	Computer and related activities	0	1	2	3	1
	73	Research and development	0	0	0	0	0
	74	Other business activities	14	15	19	19	26
		Total	38	53	97	96	179
Section L		PUBLIC ADMINISTRATION AND DEFENCE; COMPULSORY SOCIAL SECURITY	0	0	0	0	0
Section M		EDUCATION	1	0	0	0	1
Section N		HEALTH AND SOCIAL WORK	0	1	0	1	0
Section O		OTHER COMMUNITY, SOCIAL & PERSONAL SERVICE ACTIVITIES	2	2	10	8	10
Section P		PRIVATE HOUSEHOLDS EMPLOYING STAFF AND UNDIFFERENTIATED PRODUCTION ACTIVITIES OF HOUSEHOLDS FOR OWN USE	0	0	0	0	0
Section Q		EXTRA-TERRITORIAL ORGANISATIONS AND BODIES	0	0	0	0	0
ALL OTHERS ²			6	9	6	16	24
Total			80	92	159	177	270

p Provisional.

¹ The Standard Industrial Classification (SIC 2003) definitions can be found at [http://www.statistics.gov.uk/methods_quality/sic/downloads/UK_SIC_Vol1\(2003\).pdf](http://www.statistics.gov.uk/methods_quality/sic/downloads/UK_SIC_Vol1(2003).pdf)

² Including unknown or invalid SIC codes and non-trading or dormant companies

3b. Administrations (Enterprise Act) by industry (SIC 2003)¹ England & Wales

not seasonally adjusted

Section	Sub-section 2 digit 3 digit		2007		2008		
			Q3	Q4	Q1	Q2	Q3 p
Section A		AGRICULTURE, HUNTING AND FORESTRY	8	3	4	5	4
Section B		FISHING	0	0	0	2	0
Section C		MINING AND QUARRYING	0	2	1	0	1
Section D		MANUFACTURING					
	DA	Food products, beverages and tobacco	14	5	8	13	10
	DB	Textiles and textile products	6	5	7	9	9
	DC	Leather and leather products	1	0	0	2	1
	DD	Wood and wood products	5	6	7	5	11
	DE	Pulp, paper and paper products publishing and printing	28	20	41	27	33
	DF	Coke, refined petroleum products and nuclear fuel	0	0	0	0	1
	DG	Chemicals, chemical products and man-made fibres	9	3	1	3	5
	DH	Rubber and plastic products	6	6	14	10	9
	DI	Other non-metallic mineral products	1	5	3	4	2
	DJ	Basic metals and fabricated metal products	21	22	30	38	28
	DK	Machinery and equipment not elsewhere classified	4	8	10	5	8
	DL	Electrical and optical equipment	13	5	13	12	9
	DM	Transport equipment	11	12	4	2	9
	DN	Not elsewhere classified	16	22	34	27	28
		Total	135	119	172	157	163
Section E		ELECTRICITY, GAS AND WATER SUPPLY	2	0	0	1	0
Section F	45	CONSTRUCTION					
	451	Site preparation	1	3	0	2	2
	452	Building of complete constructions or parts thereof; civil engineering	42	41	59	48	72
	453	Building installation	20	13	26	27	15
	454	Building completion	13	11	17	20	15
	455	Renting of construction or demolition equipment with operator	1	3	7	2	0
		Total	77	71	109	99	104
Section G		WHOLESALE AND RETAIL TRADE; REPAIR OF MOTOR VEHICLES, MOTOR CYCLES AND PERSONAL AND HOUSEHOLD GOODS					
	50	Sale, maintenance and repair of motor vehicles and motorcycles; retail sale of automotive fuel	16	10	13	19	21
	51	Wholesale trade and commission trade, except of motor vehicles and motorcycles	48	36	66	66	48
	52	Retail trade, except of motor vehicles and motorcycles; repair of personal and household goods	41	25	52	66	53
		Total	105	71	131	151	122
Section H	55	HOTELS AND RESTAURANTS					
	551	Hotels	0	4	8	5	2
	553	Restaurants	21	16	27	22	33
	554	Bars	5	4	5	9	17
		Other	4	2	1	6	4
		Total	30	26	41	42	56
Section I		TRANSPORT, STORAGE AND COMMUNICATION					
	60	Land transport; transport via pipelines	17	12	14	23	25
	61	Water transport	0	0	0	1	0
	62	Air transport	0	1	0	4	2
	63	Supporting and auxiliary transport activities; activities of travel agencies	9	6	12	8	27
	64	Post and telecommunications	10	6	4	10	11
		Total	36	25	30	46	65
Section J		FINANCIAL INTERMEDIATION					
	66	Insurance and pension funding, except compulsory social security	2	2	6	2	0
		Other	7	5	6	8	15
		Total	9	7	12	10	15
Section K		REAL ESTATE, RENTING AND BUSINESS ACTIVITIES					
	70	Real estate activities	12	24	31	53	105
	71	Renting of machinery and equipment without operator and of personal and household goods	2	3	7	6	11
	72	Computer and related activities	19	17	33	39	28
	73	Research and development	2	3	0	1	5
	74	Other business activities	136	119	153	198	191
		Total	171	166	224	297	340
Section L		PUBLIC ADMINISTRATION AND DEFENCE; COMPULSORY SOCIAL SECURITY	0	0	2	0	2
Section M		EDUCATION	5	7	11	5	7
Section N		HEALTH AND SOCIAL WORK	7	5	14	8	8
Section O		OTHER COMMUNITY, SOCIAL & PERSONAL SERVICE ACTIVITIES	36	27	44	32	48
Section P		PRIVATE HOUSEHOLDS EMPLOYING STAFF AND UNDIFFERENTIATED PRODUCTION ACTIVITIES OF HOUSEHOLDS FOR OWN USE	0	0	0	1	0
Section Q		EXTRA-TERRITORIAL ORGANISATIONS AND BODIES	0	0	0	0	0
ALL OTHERS ²			45	46	63	82	71
Total			666	575	858	938	1,006

p Provisional.

¹ The Standard Industrial Classification (SIC 2003) definitions can be found at [http://www.statistics.gov.uk/methods_quality/sic/downloads/UK_SIC_Vol1\(2003\).pdf](http://www.statistics.gov.uk/methods_quality/sic/downloads/UK_SIC_Vol1(2003).pdf)

² Including unknown or invalid SIC codes and non-trading or dormant companies

3c. Company voluntary arrangements by industry (SIC 2003)¹ England & Wales

not seasonally adjusted

Section	Sub-section 2 digit 3 digit		2007		2008		
			Q3	Q4	Q1	Q2	Q3 p
Section A		AGRICULTURE, HUNTING AND FORESTRY	1	0	0	1	1
Section B		FISHING	0	0	0	0	0
Section C		MINING AND QUARRYING	0	0	0	0	2
Section D		MANUFACTURING					
	DA	Food products, beverages and tobacco	0	1	2	1	1
	DB	Textiles and textile products	0	0	2	3	2
	DC	Leather and leather products	0	0	0	0	0
	DD	Wood and wood products	1	0	1	3	0
	DE	Pulp, paper and paper products publishing and printing	1	2	6	3	4
	DF	Coke, refined petroleum products and nuclear fuel	0	0	0	1	0
	DG	Chemicals, chemical products and man-made fibres	0	0	1	1	1
	DH	Rubber and plastic products	4	0	1	2	0
	DI	Other non-metallic mineral products	0	0	0	0	2
	DJ	Basic metals and fabricated metal products	7	3	13	8	6
	DK	Machinery and equipment not elsewhere classified	0	1	0	0	0
	DL	Electrical and optical equipment	6	2	1	1	1
	DM	Transport equipment	0	1	0	0	0
	DN	Not elsewhere classified	6	2	4	5	3
		Total	25	12	31	28	20
Section E		ELECTRICITY, GAS AND WATER SUPPLY	0	0	0	0	0
Section F	45	CONSTRUCTION					
	451	Site preparation	0	1	3	0	0
	452	Building of complete constructions or parts thereof; civil engineering	7	8	11	19	17
	453	Building installation	3	6	3	8	7
	454	Building completion	5	3	6	1	4
	455	Renting of construction or demolition equipment with operator	0	0	1	0	0
		Total	15	18	24	28	28
Section G		WHOLESALE AND RETAIL TRADE; REPAIR OF MOTOR VEHICLES, MOTOR CYCLES AND PERSONAL AND HOUSEHOLD GOODS					
	50	Sale, maintenance and repair of motor vehicles and motorcycles; retail sale of automotive fuel	3	2	5	1	4
	51	Wholesale trade and commission trade, except of motor vehicles and motorcycles	9	3	2	4	10
	52	Retail trade, except of motor vehicles and motorcycles; repair of personal and household goods	8	2	10	3	6
		Total	20	7	17	8	20
Section H	55	HOTELS AND RESTAURANTS					
	551	Hotels	0	0	1	3	1
	553	Restaurants	8	1	3	3	4
	554	Bars	1	3	1	2	10
		Other	1	1	3	0	0
		Total	10	5	8	8	15
Section I		TRANSPORT, STORAGE AND COMMUNICATION					
	60	Land transport; transport via pipelines	4	2	1	2	4
	61	Water transport	0	0	0	0	0
	62	Air transport	0	0	0	0	0
	63	Supporting and auxiliary transport activities; activities of travel agencies	1	2	1	1	0
	64	Post and telecommunications	2	1	3	1	1
		Total	7	5	5	4	5
Section J		FINANCIAL INTERMEDIATION					
	66	Insurance and pension funding, except compulsory social security	0	1	0	0	0
		Other	1	0	2	1	1
		Total	1	1	2	1	1
Section K		REAL ESTATE, RENTING AND BUSINESS ACTIVITIES					
	70	Real estate activities	4	2	0	4	6
	71	Renting of machinery and equipment without operator and of personal and household goods	0	0	1	0	1
	72	Computer and related activities	3	2	10	9	10
	73	Research and development	1	0	1	0	1
	74	Other business activities	32	15	24	24	33
		Total	40	19	36	37	51
Section L		PUBLIC ADMINISTRATION AND DEFENCE; COMPULSORY SOCIAL SECURITY	0	0	0	1	0
Section M		EDUCATION	2	3	1	3	2
Section N		HEALTH AND SOCIAL WORK	1	2	2	1	5
Section O		OTHER COMMUNITY, SOCIAL & PERSONAL SERVICE ACTIVITIES	4	14	9	6	7
Section P		PRIVATE HOUSEHOLDS EMPLOYING STAFF AND UNDIFFERENTIATED PRODUCTION ACTIVITIES OF HOUSEHOLDS FOR OWN USE	0	0	0	0	0
Section Q		EXTRA-TERRITORIAL ORGANISATIONS AND BODIES	0	0	0	0	0
ALL OTHERS ²			3	5	5	5	10
			129	91	140	131	167

p Provisional.

¹ The Standard Industrial Classification (SIC 2003) definitions can be found at [http://www.statistics.gov.uk/methods_quality/sic/downloads/UK_SIC_Vol1\(2003\).pdf](http://www.statistics.gov.uk/methods_quality/sic/downloads/UK_SIC_Vol1(2003).pdf)

² Including unknown or invalid SIC codes and non-trading or dormant companies

3d. Creditors' Voluntary Liquidations following Administration¹

England & Wales

not seasonally adjusted

Year		Number of new cases
1998		:
1999		:
2000		:
2001		:
2002		:
2003		0
2004		165
2005		681
2006		914
2007		1,095
1998	Q1	:
	Q2	:
	Q3	:
	Q4	:
1999	Q1	:
	Q2	:
	Q3	:
	Q4	:
2000	Q1	:
	Q2	:
	Q3	:
	Q4	:
2001	Q1	:
	Q2	:
	Q3	:
	Q4	:
2002	Q1	:
	Q2	:
	Q3	:
	Q4	:
2003	Q1	:
	Q2	:
	Q3	0
	Q4	0
2004	Q1	12
	Q2	18
	Q3	36
	Q4	99
2005	Q1	204
	Q2	147
	Q3	149
	Q4	181
2006	Q1	212
	Q2	216
	Q3	244
	Q4	242
2007	Q1	276
	Q2	285
	Q3	264
	Q4	270
2008	Q1	270
	Q2	223
p	Q3	264
Percentage change, latest quarter on corresponding quarter of previous year		
2008	Q3	0.0

p Provisional
: Not applicable

¹ Since the revisions to corporate administration under the Enterprise Act, those administrations which resulted in a Creditors' Voluntary Liquidation (CVL) have been separately recorded by Companies House. These post-Administration new case CVLs are not included under the headline CVL figures at Table 1 as they do not represent a new company entering into an insolvency procedure for the first time. Similar information for Administrations converting to a Compulsory Liquidation or to a Company Voluntary Arrangement is not available; however numbers of these are relatively low in comparison.

4. Insolvencies

Scotland

not seasonally adjusted

Year	Individuals			Companies ¹		
	Total	Sequestrations (No. of LILA ²)	Protected Trust Deeds	Total	Compulsory Liquidations	Creditors' Voluntary Liquidations
1998	4,465	3,016	1,449	566	338	228
1999	5,339	3,195	2,144	572	364	208
2000	5,766	2,965	2,801	583	344	239
2001	6,827	3,048	3,779	602	378	224
2002	8,389	3,215	5,174	788	556	232
2003	8,780	3,328	5,452	631	436	195
2004	9,321	3,297	6,024	621	431	190
2005	11,846	4,965	6,881	569	420	149
2006	13,638	5,430	8,208	549	416	133
2007	r 13,814	r 6,219	7,595	539	439	100
1998	Q1 1,016	702	314	150	79	71
	Q2 1,171	756	415	151	93	58
	Q3 1,172	830	342	124	82	42
	Q4 1,106	728	378	141	84	57
1999	Q1 1,213	776	437	153	83	70
	Q2 1,311	807	504	136	89	47
	Q3 1,451	842	609	144	98	46
	Q4 1,364	770	594	139	94	45
2000	Q1 1,395	751	644	136	75	61
	Q2 1,527	751	776	153	92	61
	Q3 1,391	712	679	139	85	54
	Q4 1,453	751	702	155	92	63
2001	Q1 1,503	709	794	166	102	64
	Q2 1,746	750	996	141	82	59
	Q3 1,881	839	1,042	108	75	33
	Q4 1,697	750	947	187	119	68
2002	Q1 1,858	832	1,026	240	170	70
	Q2 2,136	797	1,339	175	123	52
	Q3 2,247	834	1,413	184	139	45
	Q4 2,148	752	1,396	189	124	65
2003	Q1 2,015	799	1,216	183	133	50
	Q2 2,189	858	1,331	168	118	50
	Q3 2,367	845	1,522	154	109	45
	Q4 2,209	826	1,383	126	76	50
2004	Q1 2,154	720	1,434	153	95	58
	Q2 2,160	851	1,309	147	110	37
	Q3 2,441	923	1,518	168	113	55
	Q4 2,566	803	1,763	153	113	40
2005	Q1 2,462	908	1,554	140	103	37
	Q2 2,830	1,307	1,523	159	120	39
	Q3 3,593	1,461	2,132	151	115	36
	Q4 2,961	1,289	1,672	119	82	37
2006	Q1 3,111	1,241	1,870	128	96	32
	Q2 3,544	1,305	2,239	133	99	34
	Q3 3,601	1,528	2,073	156	132	24
	Q4 3,382	1,356	2,026	132	89	43
2007	Q1 3,471	1,505	1,966	166	132	34
	Q2 r 3,498	r 1,606	1,892	165	131	34
	Q3 3,527	1,545	1,982	125	105	20
	Q4 3,318	1,563	1,755	83	71	12
2008	Q1 r 3,324	r 1,444	1,880	102	95	7
	Q2 4,735	2,853 (1,709)	1,882	132	111	21
p	Q3 5,998	4,055 (2,773)	1,943	127	111	16

Percentage change, latest quarter on corresponding quarter of previous year

2008	Q3	70.1	162.5	-2.0	1.6	5.7	-20.0
-------------	----	------	-------	------	-----	-----	-------

p Provisional.

r Revised, reflecting amendments to raw data

¹ Including partnerships.

² On 1 April 2008, Part 1 of the Bankruptcy and Diligence etc. (Scotland) Act 2007 came into force making significant changes to some aspects of bankruptcy, debt relief and debt enforcement in Scotland. This included the introduction of the new route into bankruptcy for people with low income and low assets (LILA). Of the number or sequestrations, individuals who meet LILA criteria are shown in brackets (See "Notes to Editors" paragraph 13).

4a. Compulsory liquidations by industry (SIC 2003) ¹

Scotland

not seasonally adjusted

Section	Sub-section 2 digit	3 digit	2007 ²				2008		
			Q1	Q2	Q3	Q4	Q1	Q2	Q3 p
Section A			1	0	3	0	0	0	1
Section B			0	0	0	0	0	0	0
Section C			0	0	0	1	0	0	0
Section D			MANUFACTURING						
	DA		0	1	0	0	0	1	0
	DB		3	1	1	2	0	1	0
	DC		0	0	0	0	0	0	0
	DD		0	1	1	0	0	0	1
	DE		0	5	2	1	2	1	0
	DF		0	0	0	0	0	0	0
	DG		0	0	0	0	0	0	1
	DH		0	0	0	0	0	0	0
	DI		1	0	0	0	0	1	0
	DJ		3	2	2	0	1	1	2
	DK		1	0	0	0	0	1	0
	DL		1	1	0	0	0	0	0
	DM		0	1	0	0	0	0	0
	DN		2	2	1	0	0	2	1
		Total	11	14	7	3	3	8	5
Section E			0	0	0	0	0	1	0
Section F	45		CONSTRUCTION						
	451		0	0	1	0	0	1	0
	452		9	7	8	5	8	6	8
	453		2	6	5	4	8	4	5
	454		4	4	3	3	3	4	2
	455		2	0	0	0	0	0	0
		Total	17	17	17	12	19	15	15
Section G			WHOLESALE AND RETAIL TRADE; REPAIR OF MOTOR VEHICLES, MOTOR CYCLES AND PERSONAL AND HOUSEHOLD GOODS						
	50		2	1	2	0	2	3	1
	51		2	4	6	1	2	3	3
	52		5	8	8	3	7	5	2
		Total	9	13	16	4	11	11	6
Section H	55		HOTELS AND RESTAURANTS						
	551		1	2	2	0	0	3	1
	553		8	3	2	3	2	4	5
	554		9	6	1	1	1	4	2
		Total	4	2	1	0	0	1	1
		Total	22	13	6	4	3	12	9
Section I			TRANSPORT, STORAGE AND COMMUNICATION						
	60		1	4	2	2	2	2	3
	61		0	1	0	0	0	0	0
	62		0	1	0	0	0	0	0
	63		0	1	1	0	2	1	1
	64		0	0	0	1	1	1	1
		Total	1	7	3	3	5	4	5
Section J			FINANCIAL INTERMEDIATION						
	66		0	0	0	0	1	0	0
		Total	0	0	1	0	1	0	2
Section K			REAL ESTATE, RENTING AND BUSINESS ACTIVITIES						
	70		4	8	7	1	3	4	1
	71		2	1	0	1	1	0	1
	72		9	2	3	2	3	4	4
	73		0	0	0	1	2	0	0
	74		41	49	31	26	33	37	52
		Total	56	60	41	31	42	45	58
Section L			1	0	0	0	0	0	0
Section M			1	2	1	1	2	1	0
Section N			0	0	0	1	3	2	1
Section O			8	3	6	6	2	4	7
Section P			0	0	0	0	0	0	0
Section Q			0	0	0	0	0	0	0
ALL OTHERS ²			5	2	4	5	3	8	2
Total			132	131	105	71	95	111	111

p Provisional.

¹ The Standard Industrial Classification (SIC 2003) definitions can be found at [http://www.statistics.gov.uk/methods_quality/sic/downloads/UK_SIC_Vol1\(2003\).pdf](http://www.statistics.gov.uk/methods_quality/sic/downloads/UK_SIC_Vol1(2003).pdf)

² Including unknown or invalid SIC codes and non-trading or dormant companies

³ Prior to Q1 2007, company liquidations in Scotland were classified according to the Insolvency Trade Classifications (ITC); these breakdowns are available at <http://www.insolvency.gov.uk/otherinformation/statistics/200702/table7.htm> from Q1 1998 to Q4 2006.

4b. Creditors' voluntary liquidations by industry (SIC 2003) ¹

Scotland

not seasonally adjusted

Section	Sub-section 2 digit 3 digit	2007 ³				2008		
		Q1	Q2	Q3	Q4	Q1	Q2	Q3 p
Section A		AGRICULTURE, HUNTING AND FORESTRY						
		0	0	0	0	0	0	0
Section B		FISHING						
		0	0	0	0	0	0	0
Section C		MINING AND QUARRYING						
		0	0	0	0	0	0	0
Section D		MANUFACTURING						
	DA	0	0	0	0	0	1	0
	DB	1	0	0	0	0	0	0
	DC	0	0	0	0	0	0	0
	DD	0	0	0	0	0	0	0
	DE	0	0	0	1	0	0	0
	DF	0	0	0	0	0	0	0
	DG	0	0	0	0	0	0	0
	DH	0	0	0	0	0	0	0
	DI	0	0	0	1	0	0	0
	DJ	0	2	0	0	0	0	0
	DK	0	0	2	0	1	1	0
	DL	0	0	0	0	0	0	0
	DM	0	0	1	0	0	0	0
	DN	0	2	0	0	0	0	0
	Total	1	4	3	2	1	2	0
Section E		ELECTRICITY, GAS AND WATER SUPPLY						
		0	1	0	0	0	0	0
Section F	45	CONSTRUCTION						
	451	0	0	0	0	0	0	0
	452	5	2	2	2	0	1	0
	453	0	3	1	1	2	0	1
	454	1	0	0	0	0	1	0
	455	0	0	0	0	0	0	0
	Total	6	5	3	3	2	2	1
Section G		WHOLESALE AND RETAIL TRADE; REPAIR OF MOTOR VEHICLES, MOTOR CYCLES AND PERSONAL AND HOUSEHOLD GOODS						
	50	2	0	1	0	0	0	0
	51	0	1	1	0	1	0	2
	52	3	5	3	0	1	1	0
	Total	5	6	5	0	2	1	2
Section H	55	HOTELS AND RESTAURANTS						
	551	0	0	0	0	0	0	0
	553	1	1	0	0	0	0	0
	554	1	0	1	0	0	0	1
	Other	1	0	0	0	0	0	0
	Total	3	1	1	0	0	0	1
Section I		TRANSPORT, STORAGE AND COMMUNICATION						
	60	0	3	0	1	0	0	0
	61	0	1	0	0	0	0	0
	62	0	0	0	0	0	0	0
	63	1	0	0	0	0	1	0
	64	0	0	0	0	0	0	0
	Total	1	4	0	1	0	1	0
Section J		FINANCIAL INTERMEDIATION						
	66	1	0	0	0	0	0	0
	Other	0	0	0	0	0	0	2
	Total	1	0	0	0	0	0	2
Section K		REAL ESTATE, RENTING AND BUSINESS ACTIVITIES						
	70	2	0	0	0	0	1	0
	71	0	0	0	0	0	1	0
	72	0	2	0	0	0	1	1
	73	1	0	0	1	0	0	0
	74	11	9	5	4	2	4	5
	Total	14	11	5	5	2	7	6
Section L		PUBLIC ADMINISTRATION AND DEFENCE; COMPULSORY SOCIAL SECURITY						
		0	0	0	0	0	1	0
Section M		EDUCATION						
		0	0	0	0	0	0	0
Section N		HEALTH AND SOCIAL WORK						
		0	1	0	0	0	0	0
Section O		OTHER COMMUNITY, SOCIAL & PERSONAL SERVICE ACTIVITIES						
		0	1	3	1	0	0	3
Section P		PRIVATE HOUSEHOLDS EMPLOYING STAFF AND UNDIFFERENTIATED PRODUCTION ACTIVITIES OF HOUSEHOLDS FOR OWN USE						
		0	0	0	0	0	0	0
Section Q		EXTRA-TERRITORIAL ORGANISATIONS AND BODIES						
		0	0	0	0	0	0	0
ALL OTHERS ²		3	0	0	0	0	7	1
Total		34	34	20	12	7	21	16

³ Provisional.

¹ The Standard Industrial Classification (SIC 2003) definitions can be found at [http://www.statistics.gov.uk/methods_quality/sic/downloads/UK_SIC_Vol1\(2003\).pdf](http://www.statistics.gov.uk/methods_quality/sic/downloads/UK_SIC_Vol1(2003).pdf)

² Including unknown or invalid SIC codes and non-trading or dormant companies

³ Prior to Q1 2007, company liquidations in Scotland were classified according to the Insolvency Trade Classifications (ITC); these breakdowns are available at <http://www.insolvency.gov.uk/otherinformation/statistics/200702/table7.htm> from Q1 1998 to Q4 2006.

5. Receiverships, Administrations and Company Voluntary Arrangements¹

Scotland

not seasonally adjusted

Year	Receivership Appointments	Administrator Appointments ²	In Administration (Enterprise Act 2002) ²	Company Voluntary Arrangements	
1998	83	3	:	2	
1999	69	3	:	0	
2000	108	6	:	2	
2001	97	4	:	3	
2002	118	12	:	2	
2003	118	6	3	7	
2004	82	0	31	6	
2005	56	0	55	8	
2006	34	0	86	5	
2007	75	0	37	6	
1998	Q1	16	2	:	0
	Q2	17	1	:	2
	Q3	19	0	:	0
	Q4	31	0	:	0
1999	Q1	22	3	:	0
	Q2	21	0	:	0
	Q3	17	0	:	0
	Q4	9	0	:	0
2000	Q1	24	2	:	1
	Q2	35	1	:	0
	Q3	30	0	:	1
	Q4	19	3	:	0
2001	Q1	26	2	:	1
	Q2	27	1	:	1
	Q3	19	1	:	1
	Q4	25	0	:	0
2002	Q1	26	5	:	0
	Q2	26	3	:	1
	Q3	29	3	:	1
	Q4	37	1	:	0
2003	Q1	41	4	0	0
	Q2	21	1	0	3
	Q3	36	1	1	1
	Q4	20	0	2	3
2004	Q1	30	0	9	1
	Q2	23	0	11	4
	Q3	13	0	7	0
	Q4	16	0	4	1
2005	Q1	27	0	8	1
	Q2	9	0	7	4
	Q3	12	0	19	2
	Q4	8	0	21	1
2006	Q1	11	0	28	2
	Q2	16	0	20	1
	Q3	3	0	18	1
	Q4	4	0	20	1
2007	Q1	9	0	15	2
	Q2	22	0	11	1
	Q3	8	0	6	2
	Q4	36	0	5	1
2008	Q1	56	0	12	0
	Q2	17	0	35	2
	p Q3	43	0	21	0
Percentage change, latest quarter on corresponding quarter of previous year					
2008	Q3	437.5	-	250.0	-100.0

p Provisional

: Not applicable

¹ Registered at Companies House (Scotland)

² See paragraph 7 of the Press Release "Notes to Editors" for changes wef 15 September 2003 under the Enterprise Act 2002

6. Insolvencies

Northern Ireland

not seasonally adjusted

Year	Individuals			Companies			
	Total	Bankruptcy Orders	Individual Voluntary Arrangements	Total	Compulsory Liquidations	Creditors' Voluntary Liquidations	
1998	517	394	123	..	63	..	
1999	573	401	172	..	58	..	
2000	616	349	267	..	83	..	
2001	468	292	176	..	60	..	
2002	541	334	207	102	49	53	
2003	835	517	318	142	95	47	
2004	1,115	666	449	121	76	45	
2005	1,454	821	633	138	85	53	
2006	1,809	1,035	774	128	78	50	
2007	1,338	898	440	164	122	42	
1998	Q1	130	99	31	..	17	..
	Q2	150	118	32	..	22	..
	Q3	108	82	26	..	12	..
	Q4	129	95	34	..	12	..
1999	Q1	147	110	37	..	16	..
	Q2	131	100	31	..	14	..
	Q3	108	68	40	..	14	..
	Q4	187	123	64	..	14	..
2000	Q1	202	104	98	..	22	..
	Q2	171	116	55	..	27	..
	Q3	110	54	56	..	15	..
	Q4	133	75	58	..	19	..
2001	Q1	137	86	51	..	16	..
	Q2	137	88	49	..	18	..
	Q3	79	37	42	..	11	..
	Q4	115	81	34	..	15	..
2002	Q1	121	74	47	24	12	12
	Q2	143	85	58	19	5	14
	Q3	121	74	47	33	17	16
	Q4	156	101	55	26	15	11
2003	Q1	146	90	56	37	30	7
	Q2	219	141	78	42	25	17
	Q3	205	109	96	29	19	10
	Q4	265	177	88	34	21	13
2004	Q1	253	155	98	35	19	16
	Q2	282	173	109	39	27	12
	Q3	286	165	121	28	20	8
	Q4	294	173	121	19	10	9
2005	Q1	302	174	128	29	15	14
	Q2	438	241	197	47	28	19
	Q3	320	193	127	31	19	12
	Q4	394	213	181	31	23	8
2006	Q1	408	245	163	29	19	10
	Q2	494	285	209	41	24	17
	Q3	425	241	184	28	15	13
	Q4	482	264	218	30	20	10
2007	Q1	343	218	125	36	29	7
	Q2	338	228	110	38	29	9
	Q3	338	227	111	42	28	14
	Q4	319	225	94	48	36	12
2008	Q1	330	226	104	42	37	5
	Q2	479	331	148	57	42	15
	p Q3	386	229	157	44	27	17
Percentage change, latest quarter on corresponding quarter of previous year							
2008	Q3	14.2	0.9	41.4	4.8	-3.6	21.4

p Provisional

.. Not available

7. Rate of company liquidations¹

Year		England & Wales		Scotland	
		% of Active Register	% of Total Register ²	% of Active Register	% of Total Register ²
1998	Q1	1.2	1.0	0.8	0.7
	Q2	1.2	1.0	0.8	0.7
	Q3	1.2	1.0	0.8	0.7
	Q4	1.2	1.0	0.9	0.8
1999	Q1	1.2	1.1	0.8	0.8
	Q2	1.2	1.1	0.8	0.7
	Q3	1.2	1.1	0.8	0.8
	Q4	1.2	1.0	0.8	0.7
2000	Q1	1.1	1.0	0.8	0.7
	Q2	1.1	1.0	0.8	0.7
	Q3	1.1	1.0	0.8	0.7
	Q4	1.1	1.0	0.8	0.7
2001	Q1	1.1	1.0	0.8	0.7
	Q2	1.1	1.0	0.8	0.7
	Q3	1.1	1.0	0.7	0.7
	Q4	1.1	1.0	0.8	0.7
2002	Q1	1.1	1.0	0.9	0.8
	Q2	1.1	1.0	0.9	0.8
	Q3	1.1	1.0	1.0	0.9
	Q4	1.1	1.0	1.0	0.9
2003	Q1	1.1	1.0	0.9	0.8
	Q2	1.0	0.9	0.8	0.8
	Q3	1.0	0.9	0.8	0.7
	Q4	0.9	0.8	0.7	0.6
2004	Q1	0.8	0.8	0.6	0.6
	Q2	0.8	0.7	0.6	0.5
	Q3	0.7	0.7	0.6	0.5
	Q4	0.7	0.6	0.6	0.6
2005	Q1	0.7	0.6	0.6	0.5
	Q2	0.7	0.6	0.6	0.5
	Q3	0.7	0.6	0.6	0.5
	Q4	0.7	0.6	0.5	0.5
2006	Q1	0.7	0.6	0.5	0.5
	Q2	0.7	0.6	0.5	0.4
	Q3	0.7	0.6	0.5	0.4
	Q4	0.6	0.6	0.5	0.4
2007	Q1	0.6	0.6	0.5	0.5
	Q2	0.6	0.5	0.5	0.5
	Q3	0.6	0.5	0.5	0.4
	Q4	0.6	0.5	0.4	0.4
2008	Q1	0.6	0.5	0.4	0.3
	Q2	0.6	0.5	0.3	0.3
	Q3	0.6	0.5	0.3	0.3

p provisional

¹ Calculated from company liquidations in the latest twelve month period divided by the average number of companies in that period. As from Q2 2008, register figures supplied by Companies House are counted at the end of each calendar month; previously they were monthly averages.

² The total register includes companies being wound up or dormant.