

**STRICTLY EMBARGOED UNTIL 9.30 AM, 1 August 2008**

## STATISTICS RELEASE: INSOLVENCIES IN THE SECOND QUARTER 2008

Statistics showing insolvencies in the second quarter 2008 are published today (1 August) by the Insolvency Service.

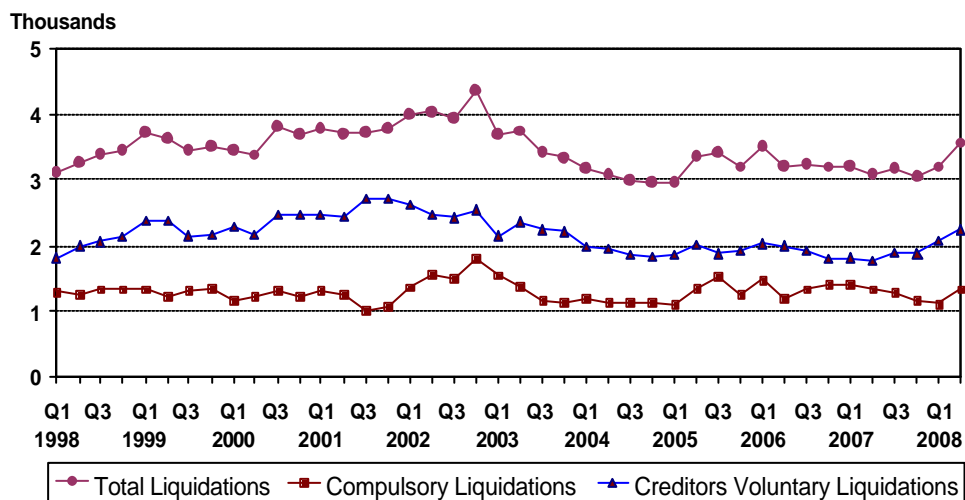
### COMPANY INSOLVENCIES

(Trends based on recent quarters' data for all corporate insolvency procedures, except compulsory liquidations, have been affected by revisions received from Companies House to the 2007 and 2008 Q1 figures.)

There were 3,560 compulsory liquidations and creditor's voluntary liquidations (CVLs) in total in England and Wales in the second quarter of 2008 on a seasonally adjusted basis. This was an increase of 11.6% on the previous quarter and an increase of 15.0% on the same period a year ago.

This was made up of 1,324 compulsory liquidations, an increase of 19.8% on the previous quarter but a decrease of 0.7% on the corresponding quarter of the previous year, and 2,236 CVLs, an increase of 7.3% on the previous quarter and an increase of 27.0% on the corresponding quarter of the previous year.

**Number of Company Liquidations in England and Wales**  
(Seasonally Adjusted)



Source: Insolvency Service and Companies House

In the twelve months ending Q2 2008, 0.6% of active companies went into liquidation, the same as the previous quarter and the corresponding quarter of 2007.

## Number of Company Liquidations in England and Wales (seasonally adjusted) <sup>1,2</sup>

	2007 Q2r	2007 Q3r	2007 Q4r	2008 Q1r	2008 Q2p	Percentage change	
						Q1 2008	Q2 2007
<b>Company Liquidations</b>	<b>3,095</b>	<b>3,167</b>	<b>3,039</b>	<b>3,189</b>	<b>3,560</b>	<b>11.6</b>	<b>15.0</b>
of which: <b>Compulsory</b>	1,334	1,277	1,162	1,106	1,324	19.8	-0.7
<b>Creditors</b>	1,760	1,890	1,877	2,084	2,236	7.3	27.0
<b>Voluntary</b> <sup>3</sup>							

Source: Insolvency Service and Companies House

p = provisional, r = revised

<sup>1</sup> Longer series back to 1998 are presented in the accompanying detailed tables.

<sup>2</sup> Trends for CVLs reflect revisions to figures for 2007 and Q1 2008 by Companies House.

<sup>3</sup> Where the CVL is the first insolvency procedure entered into (see Notes to Editors).

Additionally, there were 1,246 other corporate insolvencies in the second quarter of 2008, comprising 177 receiverships, 938 administrations and 131 company voluntary arrangements (not seasonally adjusted). In total these represented an increase of 7.6% on the previous quarter and an increase of 63.1% on the same period a year ago.

It should be noted that these figures are not seasonally adjusted and are not, therefore, on the same basis as the headline liquidation figures above. The accompanying detailed tables also include the non-seasonally adjusted series for corporate liquidations.

## Other corporate insolvencies in England and Wales (not seasonally adjusted) <sup>1,2</sup>

	2007 Q2r	2007 Q3r	2007 Q4r	2008 Q1r	2008 Q2p	Percentage change	
						Q1 2008	Q2 2007
<b>Receiverships</b>	77	80	92	159	177	11.3	129.9
<b>Administrations</b> <sup>3</sup>	585	668	575	859	938	9.2	60.3
<b>Company voluntary arrangements</b>	102	129	91	140	131	-6.4	28.4

Source: Companies House

p = provisional, r = revised

<sup>1</sup> Longer series back to 1998 are presented in the accompanying detailed tables.

<sup>2</sup> Trends reflect revisions to figures for 2007 and Q1 2008 by Companies House.

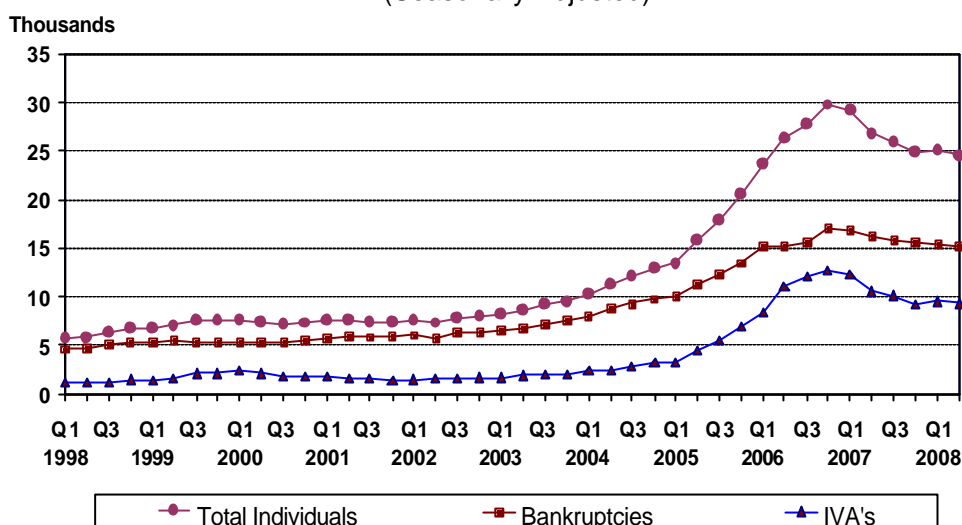
<sup>3</sup> Including Administrator Appointments.

## INDIVIDUAL INSOLVENCIES

There were 24,553 individual insolvencies in England and Wales in the second quarter of 2008 on a seasonally adjusted basis. This was a decrease of 2.0% on the previous quarter and a decrease of 8.3% on the same period a year ago.

This was made up of 15,297 bankruptcies, a decrease of 1.3% on the previous quarter and a decrease of 5.7% on the corresponding quarter of the previous year, and 9,256 Individual Voluntary Arrangements (IVAs), a decrease of 3.2% on the previous quarter and a decrease of 12.4% on the corresponding quarter of the previous year.

## Number of Individual Insolvencies in England and Wales (Seasonally Adjusted)



Source: Insolvency Service

For bankruptcy orders there has been a pronounced shift towards debtor's petition bankruptcies and away from creditor's petitions in recent years. By the second quarter of 2008, 84% were made on the petition of the debtor.

The percentage of bankruptcy orders involving trading debts (self-employed bankruptcies) has fallen from 61% in 1995 to 12.1% in the first quarter of 2008 (second quarter 2008 figures for trading-related bankruptcies are not yet available). It should be noted, however, that figures for 2007 onwards are based on a revised classification and are not entirely consistent with earlier years figures.

### Number of individual insolvencies in England and Wales (seasonally adjusted) <sup>1</sup>

						Percentage change	
	2007 Q2	2007 Q3	2007 Q4	2008 Q1r	2008 Q2p	Q2 2008 on: Q1 2008	Q2 2007
<b>Individuals</b>	<b>26,774</b>	<b>25,900</b>	<b>24,854</b>	<b>25,054</b>	<b>24,553</b>	<b>-2.0</b>	<b>-8.3</b>
of which:							
<b>Bankruptcies</b>	16,214	15,842	15,636	15,492	15,297	-1.3	-5.7
<b>IVAs</b>	10,561	10,058	9,218	9,562	9,256	-3.2	-12.4

Source: Insolvency Service

p = provisional, r = revised

<sup>1</sup> Longer series back to 1998 are presented in the accompanying detailed tables

## INSOLVENCIES IN SCOTLAND AND NORTHERN IRELAND

The following tables present recent trends in insolvencies in Scotland and Northern Ireland, complementing those for England and Wales above (longer series back to 1998 are presented in the accompanying detailed tables).

### Number of Insolvencies in Scotland (not seasonally adjusted)

						<i>Percentage change</i>	
						<i>Q2 2008 on:</i>	
						<i>Q1 2008</i>	<i>Q2 2007</i>
	2007	2007	2007	2008	2008		
	Q2r	Q3	Q4	Q1	Q2p		
<b>Company Liquidations</b>	<b>165</b>	<b>125</b>	<b>83</b>	<b>102</b>	<b>132</b>	<b>29.4</b>	<b>-20.0</b>
of which:							
<b>Compulsory</b>	131	105	71	95	111	16.8	-15.3
<b>Creditors</b>	34	20	12	7	21	200.0	-38.2
<b>Voluntary</b>							
<b>Individuals<sup>1</sup></b>	<b>3,492</b>	<b>3,527</b>	<b>3,318</b>	<b>3,275</b>	<b>4,735</b>	<b>44.6</b>	<b>35.6</b>
of which:							
<b>Sequestrations<sup>1</sup></b>	1,600	1,545	1,563	1,395	2,853	104.5	78.3
<b>Protected Trust</b>	1,892	1,982	1,755	1,880	1,882	0.1	-0.5
<b>Deeds</b>							

Source: Companies House (Scotland) and Accountant in Bankruptcy.

p = provisional, r = revised

<sup>1</sup> The sequestration figure for 2008 Q2 includes 1,709 LILA (Low Income, Low Assets) cases, introduced as a new route into bankruptcy under the Bankruptcy and Diligence etc (Scotland) Act 2007, wef 1 April 2008.

### Number of Insolvencies in Northern Ireland (not seasonally adjusted)

						<i>Percentage change</i>	
						<i>Q2 2008 on:</i>	
						<i>Q1 2008</i>	<i>Q2 2007</i>
	2007	2007	2007	2008	2008		
	Q2	Q3	Q4	Q1	Q2p		
<b>Company Liquidations</b>	<b>38</b>	<b>42</b>	<b>48</b>	<b>42</b>	<b>57</b>	<b>35.7</b>	<b>50.0</b>
of which:							
<b>Compulsory</b>	29	28	36	37	42	13.5	44.8
<b>Creditors</b>	9	14	12	5	15	200.0	66.7
<b>Voluntary</b>							
<b>Individuals</b>	<b>338</b>	<b>338</b>	<b>319</b>	<b>330</b>	<b>479</b>	<b>45.2</b>	<b>41.7</b>
of which:							
<b>Bankruptcies</b>	228	227	225	226	331	46.5	45.2
<b>IVAs</b>	110	111	94	104	148	42.3	34.5

Source: Department for Enterprise, Trade and Investment, Northern Ireland

p = provisional, r = revised

## Notes to Editors

1. The official Insolvency Statistics are the most comprehensive record of the number of corporate and individual insolvencies in England and Wales. Insolvencies in Scotland and Northern Ireland are also included, but are shown separately as they are covered by separate legislation, there are some differences in definition, and policy responsibility for them lies within the devolved administrations.
2. The statistics for England and Wales are derived from administrative records of the department for Business Enterprise and Regulatory Reform (BERR), Insolvency Service and Companies House Executive Agencies. For Scotland, the company insolvency statistics are derived from administrative records at Companies House, Scotland. Figures for individual insolvencies in Scotland are sourced from the Office of the Accountant in Bankruptcy (AIB). The Northern Ireland statistics are derived from administrative records of the DETI Insolvency Service and Companies Registry.
3. Numbers of insolvencies are not directly comparable with official estimates of business stock, formations or closures. Statistics of business start-ups and closures that are directly comparable with each other have been assembled from VAT records and are published by BERR. The latest figures are those for 2006, and were issued in a BERR press notice on 22 August 2007. More detailed figures are available via the on-line database NOMIS. Additionally, analysis into the number of firms in the United Kingdom estimated the total number of businesses at the start of 2006 at 4.5 million.
4. The X12ARIMA program (developed by Statistics Canada) is used for the seasonal adjustment of the insolvency statistics for England and Wales, this being the recommended program within UK National Statistics. Seasonal adjustment is a process by which changes that are due to seasonal or other calendar influences are removed to produce a clearer picture of the underlying behaviour of the data series. The data series covering Scotland and Northern Ireland do not demonstrate consistent seasonality and only the raw (unadjusted) series are presented.
5. Insolvent companies entering liquidation in England & Wales and Scotland are dealt with under the Insolvency Act of 1986 and, in Northern Ireland, by the Insolvency (Northern Ireland) Order 1989. They can **either** be the subject of a **compulsory liquidation** (winding-up) order obtained from the court by a creditor, shareholder or director **or** themselves pass a resolution, subject to the approval of a creditors' meeting that the company be wound up voluntarily (**creditors voluntary liquidations**, registered at Companies House/Companies Registry). In either case they are said to have been **wound-up**, and numbers are given in Tables 1, 4 and 6. A third type of winding-up, members' voluntary liquidation, is not included because it does not involve insolvency.
6. The Insolvency Act 1986 and, in Northern Ireland, the Insolvency (Northern Ireland) Order 1989 also introduced the procedures of **company administration orders** and **company voluntary arrangements (CVAs)**. The administration procedure gives a period of time during which creditors are restrained from taking action and a court appointed administrator puts forward proposals to deal with the company's financial difficulties. The CVA procedure aids business by enabling a company in financial difficulty to come to a binding agreement with its creditors. These are listed separately under Table 3 for England and Wales and Table 5 for Scotland.
7. The Enterprise Act 2002 introduced revisions to the corporate administration procedures, replacing Part II of the Insolvency Act 1986 with Schedule B1. These include the introduction of additional entry routes into administration that do not require the making of an administration order and a streamlined process for **Administrations** whereby a company can in some circumstances

be dissolved without recourse to liquidation. The primary objective of administration (and of CVAs) is the rescue of the company as a going concern. These provisions came into force on 15<sup>th</sup> September 2003 and **Administrations under the Enterprise Act** have been included on Tables 3 and 5 from Q3 2003 (dissolution follows 3 months after a notice is filed with the Registrar of Companies, if no objections are raised by the court). On 27th March 2006 the Insolvency (Northern Ireland) Order 2005 introduced similar revisions to the corporate administration procedures in Northern Ireland, replacing Part III of the Insolvency (Northern Ireland) Order 1989 with Schedule B1.

8. Since the Enterprise Act 2002, a number of these streamlined administrations have subsequently converted to a creditors' voluntary liquidation. These liquidations in England and Wales are not included under the headline figures here or at Table 1, as they do not represent a new company entering into an insolvency procedure for the first time. For completeness, however, they are included under Table 3d. It is also possible for the outcome of an administration to be entry into a company voluntary arrangement or a compulsory liquidation, but these cases are not separately identifiable from Companies House' information and will therefore be included within the new case figures for these procedures (the numbers involved are relatively few, compared to those entering CVL).

9. **Receivership appointments** comprise **administrative receivers** appointed under the 1986 Act (and the 1989 Order for Northern Ireland) and certain other receivership appointments, for example under the Law of Property Act 1925. Due to the use of the same statutory documentation for different types of receivership, it is not possible to give a breakdown between them. The provisions of the Enterprise Act 2002 [section 250] (Insolvency [Northern Ireland] Order 2005 [Article 5]) have made some changes to the procedures for administrative receivership.

10. Figures sourced from Companies House (E&W) have been revised (where appropriate) between 2007 Q1 and 2008 Q1. This reflects inaccuracies identified in the counting of cases during validation following the move to a new IT system in February 2008. The most noticeable revisions are to receiverships (where some companies had been counted more than once); the rest of this series prior to 2007 is not yet available on a revised basis. However, it should also be noted that because the revised counts have been run against a live database, they will not exactly reflect the true, original numbers of new cases that would have been reported.

11. Individual insolvencies in England and Wales and in Northern Ireland are made up of **bankruptcy orders** and **individual voluntary arrangements (IVAs)**. Insolvent individuals in England and Wales are dealt with mainly under the Insolvency Act 1986. A bankruptcy order is made on the petition of the debtor or one or more of his creditors when the court is satisfied that there is no prospect of the debt being paid. (Figures for bankruptcy orders include orders relating to the estates of deceased debtors). There are also individual voluntary arrangements (IVAs) and deeds of arrangement (the latter under the Deeds of Arrangement Act 1914), which enable debtors to come to an agreement with their creditors. Table 2 summarises the above procedures for England and Wales (IVAs and Deeds of Arrangement are included under a single column) and Table 2a provides bankruptcy orders further split by petition type. Changes to bankruptcy law in England and Wales introduced by the Enterprise Act 2002 came into force on 1 April 2004 – the Act made no changes to the existing individual voluntary arrangement regime.

12. Table 2b records numbers of Income Payments Orders (IPOs) and Income Payments Agreements (IPAs) where the bankrupt makes regular payments from surplus income towards his/her debts for a period of time, either by court order or by agreement. The figures record numbers of IPOs/IPAs made in each period, they do not, in general, relate to the date of the original bankruptcy order. Table 2b records a number of IPAs before Q2 2004 because the IPA provisions

of the Enterprise Act 2002 (commenced on 1 April 2004) were applicable, upon commencement, to pre-commencement bankruptcies.

13. Insolvent individuals in Scotland (Table 4) are subject to **sequestration** (bankruptcy) or **protected trust deeds** under the Bankruptcy (Scotland) Act 1985 (as amended). This Act was amended by the Bankruptcy (Scotland) Act 1993. On April 1, 2008 the Bankruptcy and Diligence etc. (Scotland) Act 2007 came into force making significant changes to some aspects of bankruptcy, debt relief and debt enforcement in Scotland. Most notably, as far as these statistics are concerned, it introduced a new route into bankruptcy for people with low income and low assets (LILA). The sequestration figures for Q2 2008 onwards include these new LILA cases; therefore trends in numbers of sequestrations before and after this date should be interpreted with care. Protected trust deeds are voluntary arrangements in Scotland, but although they fulfil much the same role as individual voluntary arrangements, there are important differences in the way they are set up and administered. Details of both sequestrations and protected trust deeds are found on the register of insolvencies, which is maintained by the Accountant in Bankruptcy. Further information about insolvency in Scotland can be found on the Accountant's website at [www.aib.gov.uk](http://www.aib.gov.uk). It should also be noted that from April 2008, personal insolvency statistics have been extracted from information published on the AIB website; whereas previously it was supplied on request, tailored to our publication requirements.

14. Insolvent individuals in Northern Ireland are dealt with under the Insolvency (Northern Ireland) Order 1989 and are recorded under Table 6. On 27 March 2006 the Insolvency (Northern Ireland) Order 2005 came into operation and implemented similar changes to bankruptcy procedures as the Enterprise Act 2002 introduced in England and Wales. Further information about insolvency in Northern Ireland can be found on their website at [www.insolvencyservice.detini.gov.uk](http://www.insolvencyservice.detini.gov.uk).

15. Under the Insolvency Act 1986 and the Insolvent Partnerships Order and, in Northern Ireland, the Insolvency (Northern Ireland) Order 1989 and the Insolvent Partnerships Order (Northern Ireland) 1995, insolvent partnerships may be wound up as an unregistered company or administered following bankruptcy orders against the partners. Insolvent Partnerships can also enter administration or a voluntary arrangement.

16. Company insolvencies and bankruptcy orders (relating to the self-employed) in England and Wales broken down by industry are now available according to the Standard Industrial Classification (SIC) 2003, bringing them into line with other official statistics. Industry breakdowns for compulsory liquidations and bankruptcies (only) are only available one quarter in arrears of the headline series. Figures according to the previously used Insolvency Trade Classification (ITC) are available up to Q3 2006, but information by industry is not available for the period between Q4 2006 to Q2 2007 (inclusive) on either classification. Additionally, the broad split of bankruptcy orders into self-employed and other individuals is available under Table 2a.

17. Company liquidations in Scotland are available from Q1 2007 based on the SIC2003 industry breakdown and these can be found in Tables 4a and 4b. Earlier data are available separately classified according to the Insolvency Trade Classification (ITC).

18. Information concerning insolvency legislation, policy evaluation and in England and Wales may be obtained from the Insolvency Service website at [www.insolvency.gov.uk](http://www.insolvency.gov.uk).

## National Statistics

National Statistics are produced to high professional standards set out in the National Statistics Code of Practice. They undergo regular quality assurance reviews to ensure that they meet customer needs. They are produced free from any political interference.

You can find a range of National Statistics on the Internet – [www.statistics.gov.uk](http://www.statistics.gov.uk)

### **Press Enquiries:** Lorna Dennis

Insolvency Service Press Officer

Tel: +44 (0)20 7637 6279

Fax: +44 (0)20 7291 6731

### **Non Media Enquiries**

Policy Directorate : Statistics

**Gary Mills** +44 (0)20 7637 6504

**Martin Kenchatt** +44 (0)20 7637 6443

E-Mail:

[gary.mills@insolvency.qsi.gov.uk](mailto:gary.mills@insolvency.qsi.gov.uk)

[martin.kenchatt@insolvency.qsi.gov.uk](mailto:martin.kenchatt@insolvency.qsi.gov.uk)

[margaret.sims@insolvency.qsi.gov.uk](mailto:margaret.sims@insolvency.qsi.gov.uk)

Internet:

[www.insolvency.gov.uk/otherinformation/statistics/200808/uksa/index.htm](http://www.insolvency.gov.uk/otherinformation/statistics/200808/uksa/index.htm)

Out of hours cover

**Public Enquiries** +44 (0)20 7215 5000

**Textphone** +44 (0)20 7215 6740

(for those with hearing impairment)

# 1 Company liquidations<sup>1</sup>

England & Wales

Year	Not Seasonally Adjusted			Seasonally Adjusted			
	Total	Compulsory Liquidations	Creditors' Voluntary Liquidations <sup>2</sup>	Total	Compulsory Liquidations	Creditors' Voluntary Liquidations <sup>2</sup>	
<b>1998</b>	13,203	5,216	7,987				
<b>1999</b>	14,280	5,209	9,071				
<b>2000</b>	14,317	4,925	9,392				
<b>2001</b>	14,972	4,675	10,297				
<b>2002</b>	16,306	6,231	10,075				
<b>2003</b>	14,184	5,234	8,950				
<b>2004</b>	12,192	4,584	7,608				
<b>2005</b>	12,893	5,233	7,660				
<b>2006</b>	13,137	5,418	7,719				
<b>2007</b>	r 12,507	5,165	r 7,342				
<b>1998</b>	Q1	3,265	1,333	1,932	3,102	1,290	1,812
	Q2	3,251	1,312	1,939	3,251	1,258	1,993
	Q3	3,323	1,275	2,048	3,394	1,333	2,061
	Q4	3,364	1,296	2,068	3,456	1,335	2,121
<b>1999</b>	Q1	3,912	1,379	2,533	3,714	1,332	2,382
	Q2	3,590	1,294	2,296	3,613	1,231	2,383
	Q3	3,376	1,240	2,136	3,452	1,306	2,145
	Q4	3,402	1,296	2,106	3,501	1,340	2,161
<b>2000</b>	Q1	3,637	1,210	2,427	3,451	1,163	2,289
	Q2	3,370	1,300	2,070	3,379	1,220	2,159
	Q3	3,709	1,231	2,478	3,796	1,313	2,482
	Q4	3,601	1,184	2,417	3,691	1,229	2,462
<b>2001</b>	Q1	3,943	1,359	2,584	3,767	1,316	2,451
	Q2	3,684	1,348	2,336	3,704	1,267	2,437
	Q3	3,640	940	2,700	3,722	1,021	2,701
	Q4	3,705	1,028	2,677	3,779	1,070	2,708
<b>2002</b>	Q1	4,141	1,408	2,733	3,982	1,364	2,618
	Q2	4,066	1,679	2,387	4,037	1,556	2,481
	Q3	3,808	1,390	2,418	3,930	1,502	2,427
	Q4	4,291	1,754	2,537	4,357	1,808	2,549
<b>2003</b>	Q1	3,797	1,585	2,212	3,689	1,552	2,137
	Q2	3,767	1,470	2,297	3,737	1,378	2,359
	Q3	3,314	1,075	2,239	3,418	1,167	2,250
	Q4	3,306	1,104	2,202	3,341	1,137	2,204
<b>2004</b>	Q1	3,248	1,208	2,040	3,178	1,196	1,982
	Q2	3,108	1,197	1,911	3,069	1,125	1,945
	Q3	2,900	1,061	1,839	2,989	1,129	1,859
	Q4	2,936	1,118	1,818	2,956	1,134	1,822
<b>2005</b>	Q1	3,010	1,101	1,909	2,950	1,097	1,853
	Q2	3,407	1,422	1,985	3,355	1,345	2,010
	Q3	3,306	1,454	1,852	3,397	1,524	1,874
	Q4	3,170	1,256	1,914	3,191	1,267	1,924
<b>2006</b>	Q1	3,564	1,473	2,091	3,501	1,478	2,023
	Q2	3,235	1,263	1,972	3,198	1,198	2,000
	Q3	3,172	1,286	1,886	3,241	1,332	1,909
	Q4	3,166	1,396	1,770	3,196	1,410	1,787
<b>2007</b>	Q1	r 3,274	1,384	r 1,890	r 3,207	1,392	r 1,815
	Q2	r 3,191	1,399	r 1,792	r 3,095	1,334	r 1,760
	Q3	r 3,113	1,234	r 1,879	r 3,167	1,277	r 1,890
	Q4	r 2,929	1,148	r 1,781	r 3,039	1,162	r 1,877
<b>2008</b>	Q1	r 3,262	1,080	r 2,182	r 3,189	r 1,106	r 2,084
	p Q2	3,689	1,410	2,279	3,560	1,324	2,236
<b>Percentage change, latest qtr on corresponding qtr of previous year</b>							
<b>2008</b>	Q2	15.6%	0.8%	27.2%	15.0%	-0.7%	27.0%

p Provisional.

r Revised, reflecting amendments to raw data from Companies House (see "Notes to Editors" paragraph 10 ) or routine updates to the seasonally adjusted series.

<sup>1</sup> Including partnerships.

<sup>2</sup> Where the Creditors' Voluntary Liquidation is the first Insolvency procedure entered into (see "Notes to Editors" paragraph 8).

# 1a. Compulsory liquidations by industry (SIC 2003)<sup>1,4</sup> England & Wales

		SIC 2003	2007 <sup>2</sup>		2008	
Section	Sub-section	description	Q3	Q4	Q1	Q2
Section A		AGRICULTURE, HUNTING AND FORESTRY	7	4	13	-
Section B		FISHING	0	3	0	-
Section C		MINING AND QUARRYING	2	2	5	-
Section D		MANUFACTURING				
	DA	Food products, beverages and tobacco	2	9	2	-
	DB	Textiles and textile products	7	9	5	-
	DC	Leather and leather products	0	0	0	-
	DD	Wood and wood products	3	5	10	-
	DE	Pulp, paper and paper products publishing and printing	9	8	7	-
	DF	Coke, refined petroleum products and nuclear fuel	1	1	0	-
	DG	Chemicals, chemical products and man-made fibres	1	1	1	-
	DH	Rubber and plastic products	1	6	5	-
	DI	Other non-metallic mineral products	6	3	2	-
	DJ	Basic metals and fabricated metal products	10	13	14	-
	DK	Machinery and equipment not elsewhere classified	5	5	6	-
	DL	Electrical and optical equipment	5	8	0	-
	DM	Transport equipment	3	4	3	-
	DN	Not elsewhere classified	10	8	6	-
		<b>Total</b>	<b>63</b>	<b>80</b>	<b>61</b>	<b>-</b>
Section E		ELECTRICITY, GAS AND WATER SUPPLY	7	6	9	-
Section F	45	CONSTRUCTION				
	451	Site preparation	19	23	23	-
	452	Building of complete constructions or parts thereof: civil engineering	81	62	83	-
	453	Building installation	44	50	40	-
	454	Building completion	55	58	60	-
	455	Renting of construction or demolition equipment with operator	3	4	3	-
		<b>Total</b>	<b>202</b>	<b>197</b>	<b>209</b>	<b>-</b>
Section G		WHOLESALE AND RETAIL TRADE; REPAIR OF MOTOR VEHICLES, MOTOR CYCLES AND PERSONAL AND HOUSEHOLD GOODS				
	50	Sale, maintenance and repair of motor vehicles and motorcycles; retail sale of automotive fuel	20	23	22	-
	51	Wholesale trade and commission trade, except of motor vehicles and motorcycles	86	80	83	-
	52	Retail trade, except of motor vehicles and motorcycles: repair of personal and household goods	72	69	74	-
		<b>Total</b>	<b>178</b>	<b>172</b>	<b>179</b>	<b>-</b>
Section H	55	HOTELS AND RESTAURANTS				
	551	Hotels	6	8	7	-
	553	Restaurants	42	28	27	-
	554	Bars	38	37	38	-
		Other	7	4	3	-
		<b>Total</b>	<b>93</b>	<b>77</b>	<b>75</b>	<b>-</b>
Section I		TRANSPORT, STORAGE AND COMMUNICATION				
	60	Land transport: transport via pipelines	21	35	37	-
	61	Water transport	1	3	2	-
	62	Air transport	3	0	1	-
	63	Supporting and auxiliary transport activities: activities of travel agencies	23	23	25	-
	64	Post and telecommunications	36	31	18	-
		<b>Total</b>	<b>84</b>	<b>92</b>	<b>83</b>	<b>-</b>
Section J		FINANCIAL INTERMEDIATION				
	66	Insurance and pension funding, except compulsory social security	2	3	2	-
		Other	30	36	23	-
		<b>Total</b>	<b>32</b>	<b>39</b>	<b>25</b>	<b>-</b>
Section K		REAL ESTATE, RENTING AND BUSINESS ACTIVITIES				
	70	Real estate activities	41	26	38	-
	71	Renting of machinery and equipment without operator and of personal and household goods	2	0	2	-
	72	Computer and related activities	11	16	16	-
	73	Research and development	1	0	0	-
	74	Other business activities	52	60	66	-
		<b>Total</b>	<b>107</b>	<b>102</b>	<b>122</b>	<b>-</b>
Section L		PUBLIC ADMINISTRATION AND DEFENCE; COMPULSORY SOCIAL SECURITY	4	3	1	-
Section M		EDUCATION	16	10	12	-
Section N		HEALTH AND SOCIAL WORK	10	17	13	-
Section O		OTHER COMMUNITY, SOCIAL & PERSONAL SERVICE ACTIVITIES	108	80	84	-
Section P		PRIVATE HOUSEHOLDS EMPLOYING STAFF AND UNDIFFERENTIATED PRODUCTION ACTIVITIES OF HOUSEHOLDS FOR OWN USE	2	0	1	-
Section Q		EXTRA-TERRITORIAL ORGANISATIONS AND BODIES	1	4	3	-
ALL OTHERS <sup>3</sup>			355	362	332	-
<b>Total</b>			<b>1,271</b>	<b>1,250</b>	<b>1,227</b>	<b>-</b>

- Not yet available

<sup>1</sup> The Standard Industrial Classification (SIC 2003) definitions can be found at [http://www.statistics.gov.uk/methods\\_quality/sic/downloads/UK\\_SIC\\_V41\(2003\).pdf](http://www.statistics.gov.uk/methods_quality/sic/downloads/UK_SIC_V41(2003).pdf)

<sup>2</sup> Unknown SIC

<sup>3</sup> An industry breakdown according to the previously used Insolvency Trade Classifications (ITC) is available up to Q3 2006 at <http://www.insolvency.gov.uk/otherinformation/statistics/2007/02/table4.htm>. The period from Q4 2006 to Q2 2007 is not available broken down by industry.

<sup>4</sup> Totals for compulsory liquidations here are not the same as the headline figures under Table 1. This is because the industrial breakdown has been compiled from a specially selected extract from the live database, whereas the headline figures are produced monthly using a different reporting system.

# 1b Creditors' Voluntary Liquidations by industry (SIC 2003)<sup>1,3</sup>

England & Wales

			SIC 2003		2007		2008	
Section	Sub-section	2 digit	3 digit	Q3	Q4	Q1	Q2 p	
Section A			AGRICULTURE, HUNTING AND FORESTRY	3	5	7	11	
Section B			FISHING	0	0	0	0	
Section C			MINING AND QUARRYING	0	1	0	1	
Section D			MANUFACTURING					
	DA		Food products, beverages and tobacco	14	7	10	13	
	DB		Textiles and textile products	23	19	17	26	
	DC		Leather and leather products	0	2	0	1	
	DD		Wood and wood products	18	13	11	24	
	DE		Pulp, paper and paper products publishing and printing	51	52	54	47	
	DF		Coke, refined petroleum products and nuclear fuel	0	0	1	0	
	DG		Chemicals, chemical products and man-made fibres	4	1	6	1	
	DH		Rubber and plastic products	5	21	18	18	
	DI		Other non-metallic mineral products	9	12	9	10	
	DJ		Basic metals and fabricated metal products	53	32	51	37	
	DK		Machinery and equipment not elsewhere classified	12	12	12	14	
	DL		Electrical and optical equipment	20	10	16	17	
	DM		Transport equipment	7	5	6	8	
	DN		Not elsewhere classified	46	36	55	51	
			Total	262	222	266	267	
Section E			ELECTRICITY, GAS AND WATER SUPPLY	1	3	2	0	
Section F	45		CONSTRUCTION					
		451	Site preparation	7	8	3	7	
		452	Building of complete constructions or parts thereof: civil engineering	118	143	171	164	
		453	Building installation	76	77	101	117	
		454	Building completion	68	72	69	81	
		455	Renting of construction or demolition equipment with operator	1	3	2	3	
			Total	270	303	346	372	
Section G			WHOLESALE AND RETAIL TRADE; REPAIR OF MOTOR VEHICLES, MOTOR CYCLES AND PERSONAL AND HOUSEHOLD GOODS					
		50	Sale, maintenance and repair of motor vehicles and motorcycles: retail sale of automotive fuel	44	52	58	57	
		51	Wholesale trade and commission trade, except of motor vehicles and motorcycles	113	103	133	148	
		52	Retail trade, except of motor vehicles and motorcycles: repair of personal and household goods	143	143	190	209	
			Total	300	298	381	414	
Section H	55		HOTELS AND RESTAURANTS					
		551	Hotels	10	8	3	11	
		553	Restaurants	68	79	55	80	
		554	Bars	26	30	40	47	
			Other	12	18	14	21	
			Total	116	135	112	159	
Section I			TRANSPORT, STORAGE AND COMMUNICATION					
		60	Land transport: transport via pipelines	43	35	54	54	
		61	Water transport	1	0	2	0	
		62	Air transport	0	2	3	0	
		63	Supporting and auxiliary transport activities; activities of travel agencies	20	20	19	20	
		64	Post and telecommunications	32	22	23	28	
			Total	96	79	101	102	
Section J			FINANCIAL INTERMEDIATION					
		66	Insurance and pension funding, except compulsory social security	2	7	4	4	
			Other	16	8	16	22	
			Total	18	15	20	26	
Section K			REAL ESTATE, RENTING AND BUSINESS ACTIVITIES					
		70	Real estate activities	45	40	51	63	
		71	Renting of machinery and equipment without operator and of personal and household goods	9	9	8	17	
		72	Computer and related activities	76	69	82	85	
		73	Research and development	2	4	5	1	
		74	Other business activities	399	336	467	436	
			Total	531	458	613	602	
Section L			PUBLIC ADMINISTRATION AND DEFENCE; COMPULSORY SOCIAL SECURITY	5	2	2	4	
Section M			EDUCATION	12	11	13	15	
Section N			HEALTH AND SOCIAL WORK	14	14	15	23	
Section O			OTHER COMMUNITY, SOCIAL & PERSONAL SERVICE ACTIVITIES	112	107	126	115	
Section P			PRIVATE HOUSEHOLDS EMPLOYING STAFF AND UNDIFFERENTIATED PRODUCTION ACTIVITIES OF HOUSEHOLDS FOR OWN USE	1	3	2	2	
Section Q			EXTRA-TERRITORIAL ORGANISATIONS AND BODIES	0	0	2	0	
ALL OTHERS <sup>p</sup>				138	125	174	166	
<b>Total</b>				<b>*****</b>	<b>*****</b>	<b>*****</b>	<b>*****</b>	

<sup>p</sup> Provisional.

<sup>1</sup> The Standard Industrial Classification (SIC 2003) definitions can be found at [http://www.statistics.gov.uk/methods\\_quality/sic/downloads/UK\\_SIC\\_Vol1\(2003\).pdf](http://www.statistics.gov.uk/methods_quality/sic/downloads/UK_SIC_Vol1(2003).pdf)

<sup>2</sup> Including unknown or invalid SIC codes and non-trading or dormant companies

<sup>3</sup> Where the Creditors Voluntary Liquidation is the first insolvency procedure entered into (see "Notes to Editors" paragraph 8).

## 2. Individual insolvencies

### England & Wales

Year	Not Seasonally Adjusted			Seasonally Adjusted			
	Total	Bankruptcy Orders	Individual Voluntary Arrangements <sup>1</sup>	Total	Bankruptcy Orders	Individual Voluntary Arrangements <sup>1</sup>	
<b>1998</b>	24,549	19,647	4,902				
<b>1999</b>	28,806	21,611	7,195				
<b>2000</b>	29,528	21,550	7,978				
<b>2001</b>	29,775	23,477	6,298				
<b>2002</b>	30,587	24,292	6,295				
<b>2003</b>	35,604	28,021	7,583				
<b>2004</b>	46,650	35,898	10,752				
<b>2005</b>	67,584	47,291	20,293				
<b>2006</b>	107,288	62,956	44,332				
<b>2007</b>	106,645	64,480	42,165				
<b>1998</b>	Q1	5,953	4,938	1,015	5,694	4,612	1,082
	Q2	5,855	4,755	1,100	5,779	4,676	1,103
	Q3	6,380	5,113	1,267	6,299	5,088	1,211
	Q4	6,361	4,841	1,520	6,778	5,272	1,506
<b>1999</b>	Q1	7,025	5,799	1,226	6,760	5,436	1,324
	Q2	7,120	5,527	1,593	7,053	5,446	1,607
	Q3	7,592	5,365	2,227	7,493	5,356	2,138
	Q4	7,069	4,920	2,149	7,500	5,374	2,127
<b>2000</b>	Q1	7,837	5,667	2,170	7,639	5,316	2,323
	Q2	7,532	5,414	2,118	7,418	5,318	2,100
	Q3	7,316	5,451	1,865	7,208	5,440	1,768
	Q4	6,843	5,018	1,825	7,264	5,476	1,788
<b>2001</b>	Q1	7,750	6,078	1,672	7,496	5,707	1,788
	Q2	7,714	6,115	1,599	7,576	5,995	1,581
	Q3	7,434	5,817	1,617	7,348	5,808	1,540
	Q4	6,877	5,467	1,410	7,356	5,967	1,389
<b>2002</b>	Q1	7,411	6,027	1,384	7,511	6,019	1,492
	Q2	7,861	6,269	1,592	7,343	5,769	1,575
	Q3	7,892	6,249	1,643	7,815	6,246	1,569
	Q4	7,423	5,747	1,676	7,918	6,259	1,659
<b>2003</b>	Q1	8,426	6,912	1,514	8,145	6,502	1,643
	Q2	8,889	6,948	1,941	8,684	6,764	1,920
	Q3	9,291	7,221	2,070	9,202	7,223	1,979
	Q4	8,998	6,940	2,058	9,573	7,532	2,041
<b>2004</b>	Q1	10,665	8,524	2,141	10,330	8,008	2,322
	Q2	11,535	9,060	2,475	11,250	8,810	2,440
	Q3	12,227	9,315	2,912	12,122	9,342	2,779
	Q4	12,223	8,999	3,224	12,948	9,737	3,211
<b>2005</b>	Q1	13,190	10,188	3,002	13,424	10,137	3,286
	Q2	16,873	12,338	4,535	15,805	11,318	4,487
	Q3	18,010	12,256	5,754	17,857	12,330	5,528
	Q4	19,511	12,509	7,002	20,498	13,506	6,992
<b>2006</b>	Q1	23,939	16,283	7,656	23,680	15,235	8,445
	Q2	26,722	15,489	11,233	26,210	15,115	11,095
	Q3	28,083	15,418	12,665	27,682	15,568	12,114
	Q4	28,544	15,766	12,778	29,715	17,038	12,678
<b>2007</b>	Q1	29,236	17,937	11,299	29,116	16,788	12,328
	Q2	27,327	16,489	10,838	26,774	16,214	10,561
	Q3	26,252	15,600	10,652	25,900	15,842	10,058
	Q4	23,830	14,454	9,376	24,854	15,636	9,218
<b>2008</b>	Q1	24,619	15,814	8,805	r 25,054	r 15,492	r 9,562
	p Q2	25,783	16,373	9,410	24,553	15,297	9,256
<b>Percentage change, latest qtr on corresponding qtr of previous year</b>							
<b>2008</b>	Q2	-5.7%	-0.7%	-13.2%	-8.3%	-5.7%	-12.4%

p Provisional.

r Revised, routine updates to the seasonally adjusted series.

<sup>1</sup> Including Deeds of Arrangements

## 2a. Bankruptcy orders by petition type and trading status

England & Wales

not seasonally adjusted

Year	Bankruptcy Orders	Debtor's petitions		Creditor's petitions		Bankruptcy Orders	Self-employed <sup>1</sup>		Other individuals <sup>1</sup>		
		count	%	count	%		count	%	count	%	
<b>1998</b>	19,647	10,497	53.4	9,150	46.6	19,647	10,420	53.0	9,227	47.0	
<b>1999</b>	21,611	12,327	57.0	9,284	43.0	21,611	10,723	49.6	10,888	50.4	
<b>2000</b>	21,550	13,312	61.8	8,238	38.2	21,550	9,952	46.2	11,598	53.8	
<b>2001</b>	23,477	15,514	66.1	7,963	33.9	23,477	9,839	41.9	13,638	58.1	
<b>2002</b>	24,292	16,955	69.8	7,337	30.2	24,292	8,854	36.4	15,438	63.6	
<b>2003</b>	28,021	19,882	71.0	8,139	29.0	28,021	9,139	32.6	18,882	67.4	
<b>2004</b>	35,898	27,872	77.6	8,026	22.4	35,898	9,564	26.6	26,334	73.4	
<b>2005</b>	47,291	38,131	80.6	9,160	19.4	47,291	10,839	22.9	36,452	77.1	
<b>2006</b>	62,956	53,038	84.2	9,918	15.8	62,956	10,894	17.3	52,062	82.7	
<b>2007</b>	64,480	54,433	84.4	10,047	15.6	64,480	7,058	10.9	57,422	89.1	
<b>1998</b>	Q1	4,938	2,771	56.1	2,167	43.9	4,938	2,637	53.4	2,301	46.6
	Q2	4,755	2,476	52.1	2,279	47.9	4,755	2,521	53.0	2,234	47.0
	Q3	5,113	2,613	51.1	2,500	48.9	5,113	2,672	52.3	2,441	47.7
	Q4	4,841	2,637	54.5	2,204	45.5	4,841	2,590	53.5	2,251	46.5
<b>1999</b>	Q1	5,799	3,336	57.5	2,463	42.5	5,799	2,996	51.7	2,803	48.3
	Q2	5,527	3,096	56.0	2,431	44.0	5,527	2,721	49.2	2,806	50.8
	Q3	5,365	3,102	57.8	2,263	42.2	5,365	2,614	48.7	2,751	51.3
	Q4	4,920	2,793	56.8	2,127	43.2	4,920	2,392	48.6	2,528	51.4
<b>2000</b>	Q1	5,667	3,554	62.7	2,113	37.3	5,667	2,571	45.4	3,096	54.6
	Q2	5,414	3,276	60.5	2,138	39.5	5,414	2,519	46.5	2,895	53.5
	Q3	5,451	3,292	60.4	2,159	39.6	5,451	2,518	46.2	2,933	53.8
	Q4	5,018	3,190	63.6	1,828	36.4	5,018	2,344	46.7	2,674	53.3
<b>2001</b>	Q1	6,078	3,987	65.6	2,091	34.4	6,078	2,666	43.9	3,412	56.1
	Q2	6,115	3,890	63.6	2,225	36.4	6,115	2,609	42.7	3,506	57.3
	Q3	5,817	3,889	66.9	1,928	33.1	5,817	2,414	41.5	3,403	58.5
	Q4	5,467	3,748	68.6	1,719	31.4	5,467	2,150	39.3	3,317	60.7
<b>2002</b>	Q1	6,027	4,223	70.1	1,804	29.9	6,027	2,261	37.5	3,766	62.5
	Q2	6,269	4,333	69.1	1,936	30.9	6,269	2,235	35.7	4,034	64.3
	Q3	6,249	4,374	70.0	1,875	30.0	6,249	2,244	35.9	4,005	64.1
	Q4	5,747	4,025	70.0	1,722	30.0	5,747	2,114	36.8	3,633	63.2
<b>2003</b>	Q1	6,912	4,892	70.8	2,020	29.2	6,912	2,468	35.7	4,444	64.3
	Q2	6,948	4,851	69.8	2,097	30.2	6,948	2,267	32.6	4,681	67.4
	Q3	7,221	5,148	71.3	2,073	28.7	7,221	2,296	31.8	4,925	68.2
	Q4	6,940	4,991	71.9	1,949	28.1	6,940	2,108	30.4	4,832	69.6
<b>2004</b>	Q1	8,524	6,472	75.9	2,052	24.1	8,524	2,437	28.6	6,087	71.4
	Q2	9,060	7,028	77.6	2,032	22.4	9,060	2,455	27.1	6,605	72.9
	Q3	9,315	7,236	77.7	2,079	22.3	9,315	2,300	24.7	7,015	75.3
	Q4	8,999	7,136	79.3	1,863	20.7	8,999	2,372	26.4	6,627	73.6
<b>2005</b>	Q1	10,188	8,219	80.7	1,969	19.3	10,188	2,446	24.0	7,742	76.0
	Q2	12,338	9,840	79.8	2,498	20.2	12,338	2,835	23.0	9,503	77.0
	Q3	12,256	9,902	80.8	2,354	19.2	12,256	2,850	23.3	9,406	76.7
	Q4	12,509	10,170	81.3	2,339	18.7	12,509	2,708	21.6	9,801	78.4
<b>2006</b>	Q1	16,283	13,492	82.9	2,791	17.1	16,283	3,150	19.3	13,133	80.7
	Q2	15,489	13,086	84.5	2,403	15.5	15,489	2,898	18.7	12,591	81.3
	Q3	15,418	13,036	84.6	2,382	15.4	15,418	2,990	19.4	12,428	80.6
	Q4	15,766	13,424	85.1	2,342	14.9	15,766	1,856	11.8	13,910	88.2
<b>2007</b>	Q1	17,937	15,356	85.6	2,581	14.4	17,937	1,981	11.0	15,956	89.0
	Q2	16,489	13,923	84.4	2,566	15.6	16,489	1,767	10.7	14,722	89.3
	Q3	15,600	13,173	84.4	2,427	15.6	15,600	1,660	10.6	13,940	89.4
	Q4	14,454	11,981	82.9	2,473	17.1	14,454	1,650	11.4	12,804	88.6
<b>2008</b>	Q1	15,814	13,275	83.9	2,539	16.1	15,814	1,915	12.1	13,899	87.9
	p Q2	16,373	13,754	84.0	2,619	16.0	16,373	..	..	..	..

p Provisional.

.. Not yet available

<sup>1</sup> Changes have been made to the part of the database used to capture information on trading status and industry codes. From 2006 Q4, "self-employed" includes the categories "self-employed"; "trader but failure not as a result of trading" and "trading partnership" and "other individuals" includes "non-trading"; "non-surrender" and "unknown". The breakdown by trading status from Q4 2006 should not therefore be considered to be entirely consistent with that for the earlier period.

## 2b. Income payments<sup>1</sup> England & Wales

Year	Total	not seasonally adjusted		
		Income Payments Orders	Income Payments Agreements	
<b>1998</b>	..	..	:	
<b>1999</b>	2,451	2,451	:	
<b>2000</b>	2,346	2,346	:	
<b>2001</b>	2,396	2,396	:	
<b>2002</b>	2,322	2,322	:	
<b>2003</b>	2,812	2,720	92	
<b>2004</b>	6,238	1,238	5,000	
<b>2005</b>	9,102	69	9,033	
<b>2006</b>	11,990	86	11,904	
<b>2007</b>	13,332	77	13,255	
<b>1998</b>	Q1	..	..	:
	Q2	506	506	:
	Q3	648	648	:
	Q4	621	621	:
<b>1999</b>	Q1	522	522	:
	Q2	543	543	:
	Q3	690	690	:
	Q4	696	696	:
<b>2000</b>	Q1	486	486	:
	Q2	540	540	:
	Q3	652	652	:
	Q4	668	668	:
<b>2001</b>	Q1	565	565	:
	Q2	458	458	:
	Q3	710	710	:
	Q4	663	663	:
<b>2002</b>	Q1	565	565	:
	Q2	458	458	:
	Q3	630	630	:
	Q4	669	669	:
<b>2003</b>	Q1	464	462	2
	Q2	444	432	12
	Q3	917	885	32
	Q4	987	941	46
<b>2004</b>	Q1	783	709	74
	Q2	1,257	413	844
	Q3	2,140	90	2,050
	Q4	2,058	26	2,032
<b>2005</b>	Q1	1,430	25	1,405
	Q2	1,882	11	1,871
	Q3	2,900	12	2,888
	Q4	2,890	21	2,869
<b>2006</b>	Q1	1,973	29	1,944
	Q2	2,532	21	2,511
	Q3	3,798	20	3,778
	Q4	3,687	16	3,671
<b>2007</b>	Q1	2,483	23	2,460
	Q2	2,895	27	2,868
	Q3	4,244	11	4,233
	Q4	3,710	16	3,694
<b>2008</b>	Q1	2,169	18	2,151
p	Q2	2,490	11	2,479

p Provisional

: Not applicable

.. Not available

<sup>1</sup> See "Notes to Editors" paragraph 12.

## 2c. Trading-related bankruptcies by industry (SIC 2003)<sup>1-4</sup>

England & Wales

not seasonally adjusted

		SIC 2003		2007 <sup>1</sup>		2008	
Section	Section number	2 digit	3 digit	Q3	Q4	Q1	Q2
Section A			AGRICULTURE, HUNTING AND FORESTRY	43	35	31	..
Section B			FISHING	3	5	4	..
Section C			MINING AND QUARRYING	0	5	1	..
Section D			MANUFACTURING				
	DA		Food products, beverages and tobacco	0	0	2	..
	DB		Textiles and textile products	2	7	7	..
	DC		Leather and leather products	0	0	0	..
	DD		Wood and wood products	3	8	12	..
	DE		Pulp, paper and paper products publishing and printing	4	5	5	..
	DF		Coke, refined petroleum products and nuclear fuel	0	0	1	..
	DG		Chemicals, chemical products and man-made fibres	1	0	0	..
	DH		Rubber and plastic products	2	1	1	..
	DI		Other non-metallic mineral products	3	6	0	..
	DJ		Basic metals and fabricated metal products	7	2	8	..
	DK		Machinery and equipment not elsewhere classified	3	3	1	..
	DL		Electrical and optical equipment	1	1	0	..
	DM		Transport equipment	0	1	4	..
	DN		Not elsewhere classified	7	6	9	..
			<b>Total</b>	<b>33</b>	<b>40</b>	<b>50</b>	<b>..</b>
Section E			ELECTRICITY, GAS AND WATER SUPPLY	29	16	36	..
Section F	45		CONSTRUCTION				
	451		Site preparation	58	51	58	..
	452		Building of complete constructions or parts thereof: civil engineering	73	72	99	..
	453		Building installation	111	96	120	..
	454		Building completion	133	157	189	..
	455		Renting of construction or demolition equipment with operator	4	2	4	..
			<b>Total</b>	<b>379</b>	<b>378</b>	<b>470</b>	<b>..</b>
Section G			WHOLESALE AND RETAIL TRADE: REPAIR OF MOTOR VEHICLES, MOTOR CYCLES AND PERSONAL AND HOUSEHOLD GOODS				
	50		Sale, maintenance and repair of motor vehicles and motorcycles: retail sale of automotive fuel	43	57	52	..
	51		Wholesale trade and commission trade, except of motor vehicles and motorcycles	48	56	59	..
	52		Retail trade, except of motor vehicles and motorcycles: repair of personal and household goods	204	180	215	..
			<b>Total</b>	<b>295</b>	<b>293</b>	<b>326</b>	<b>..</b>
Section H	55		HOTELS AND RESTAURANTS				
	551		Hotels	7	11	14	..
	553		Restaurants	39	36	38	..
	554		Bars	96	124	139	..
			Other	21	16	17	..
			<b>Total</b>	<b>163</b>	<b>187</b>	<b>208</b>	<b>..</b>
Section I			TRANSPORT, STORAGE AND COMMUNICATION				
	60		Land transport: transport via pipelines	155	135	179	..
	61		Water transport	0	1	1	..
	62		Air transport	0	2	0	..
	63		Supporting and auxiliary transport activities: activities of travel agencies	44	43	52	..
	64		Post and telecommunications	30	32	47	..
			<b>Total</b>	<b>229</b>	<b>213</b>	<b>279</b>	<b>..</b>
Section J			FINANCIAL INTERMEDIATION				
	66		Insurance and pension funding, except compulsory social security	3	0	0	..
			Other	29	37	26	..
			<b>Total</b>	<b>32</b>	<b>37</b>	<b>26</b>	<b>..</b>
Section K			REAL ESTATE, RENTING AND BUSINESS ACTIVITIES				
	70		Real estate activities	19	11	17	..
	71		Renting of machinery and equipment without operator and of personal and household goods	4	0	1	..
	72		Computer and related activities	9	8	7	..
	73		Research and development	0	0	0	..
	74		Other business activities	45	46	64	..
			<b>Total</b>	<b>77</b>	<b>65</b>	<b>89</b>	<b>..</b>
Section L			PUBLIC ADMINISTRATION AND DEFENCE: COMPULSORY SOCIAL SECURITY	3	2	2	..
Section M			EDUCATION	20	17	25	..
Section N			HEALTH AND SOCIAL WORK	30	47	34	..
Section O			OTHER COMMUNITY, SOCIAL & PERSONAL SERVICE ACTIVITIES	283	283	309	..
Section P			PRIVATE HOUSEHOLDS EMPLOYING STAFF AND UNDIFFERENTIATED PRODUCTION ACTIVITIES OF HOUSEHOLDS FOR OWN USE	2	6	3	..
Section Q			EXTRA-TERRITORIAL ORGANISATIONS AND BODIES	0	3	2	..
ALL OTHERS <sup>2</sup>				21	10	21	..
<b>Total</b>				<b>1,642</b>	<b>1,642</b>	<b>1,916</b>	<b>..</b>

.. Not yet available

<sup>1</sup> The Standard Industrial Classification (SIC 2003) definitions can be found at [http://www.statistics.gov.uk/methods\\_quality/sic/downloads/UK\\_SIC\\_V01\(2003\).pdf](http://www.statistics.gov.uk/methods_quality/sic/downloads/UK_SIC_V01(2003).pdf)

<sup>2</sup> Unknown SIC

<sup>3</sup> An industry breakdown according to the previously used Insolvency Trade Classifications (ITC) is available up to Q3 2006 at <http://www.insolvency.gov.uk/otherinformation/statistics/200702table5.htm>. The period from Q4 2006 to Q2 2007 is not available broken down by industry.

<sup>4</sup> Totals for trading-related bankruptcies here are not entirely consistent with the headline figures under Table 2b. This is because the industrial breakdown has been compiled from a specially selected extract from the live database, whereas the headline figures are produced monthly using a different reporting system.

### 3. Receiverships, Administrations and Company Voluntary Arrangements England & Wales

not seasonally adjusted

Year	Receivership Appointments <sup>2</sup>	Administrator Appointments <sup>3</sup>	In Administration (Enterprise Act 2002) <sup>3,4</sup>	Company Voluntary Arrangements	
1998	1,713	338	:	470	
1999	1,618	440	:	475	
2000	1,595	438	:	557	
2001	1,914	698	:	597	
2002	1,541	643	:	651	
2003	1,261	497	247	726	
2004	864	1	1,601	597	
2005	590	4	2,257	604	
2006	588	0	3,560	534	
2007	r 337	r 3	r 2,509	r 418	
1998	Q1	516	85	:	54
	Q2	395	46	:	127
	Q3	443	105	:	153
	Q4	359	102	:	136
1999	Q1	419	193	:	106
	Q2	397	81	:	128
	Q3	375	64	:	120
	Q4	427	102	:	121
2000	Q1	454	89	:	124
	Q2	429	135	:	160
	Q3	355	101	:	121
	Q4	357	113	:	152
2001	Q1	649	125	:	132
	Q2	435	141	:	163
	Q3	369	146	:	141
	Q4	461	286	:	161
2002	Q1	455	176	:	151
	Q2	346	151	:	151
	Q3	377	162	:	181
	Q4	363	154	:	168
2003	Q1	315	160	:	178
	Q2	298	167	:	165
	Q3	334	154	14	171
	Q4	314	16	233	212
2004	Q1	224	1	331	176
	Q2	199	0	392	154
	Q3	203	0	421	137
	Q4	238	0	457	130
2005	Q1	114	0	489	179
	Q2	167	4	568	183
	Q3	170	0	620	130
	Q4	139	0	580	112
2006	Q1	180	0	753	124
	Q2	153	0	653	147
	Q3	93	0	675	157
	Q4	162	0	1,479	106
2007	Q1	r 88	r 1	r 683	r 96
	Q2	r 77	0	r 585	r 102
	Q3	r 80	2	r 666	r 129
	Q4	r 92	0	r 575	91
2008	Q1	r 159	1	858	140
	p Q2	177	0	938	131

p Provisional

r Revised, reflecting amendments to raw data from Companies House (see "Notes to Editors" paragraph 10)

:

<sup>1</sup> Registered at Companies House

<sup>2</sup> Receivership figures from Q1 2007 are not consistent with those for the earlier period (see "Notes to Editors" paragraph 10)

<sup>3</sup> See paragraph 7 of the Press Release "Notes to Editors" for changes wef 15 September 2003 under the Enterprise Act 2002

<sup>4</sup> The figure for Q4 2006 includes 844 separate, limited companies created and managed by "Safe Solutions Accountancy Limited" for which Grant Thornton was appointed administrator.

# 3a Receiverships by industry (SIC 2003)<sup>1</sup>

England & Wales

not seasonally adjusted

		SIC 2003		2007		2008	
Section	Sub-section 2 digit 3 digit			Q3	Q4	Q1	Q2 p
Section A		AGRICULTURE, HUNTING AND FORESTRY		2	0	1	0
Section B		FISHING		0	0	0	0
Section C		MINING AND QUARRYING		0	1	0	0
Section D		MANUFACTURING					
	DA	Food products, beverages and tobacco		0	1	1	0
	DB	Textiles and textile products		1	0	1	0
	DC	Leather and leather products		0	0	0	0
	DD	Wood and wood products		0	0	0	1
	DE	Pulp, paper and paper products publishing and printing		0	1	1	2
	DF	Coke, refined petroleum products and nuclear fuel		0	0	0	0
	DG	Chemicals, chemical products and man-made fibres		0	0	0	1
	DH	Rubber and plastic products		0	2	0	1
	DI	Other non-metallic mineral products		0	0	0	0
	DJ	Basic metals and fabricated metal products		0	2	2	1
	DK	Machinery and equipment not elsewhere classified		1	2	3	0
	DL	Electrical and optical equipment		1	0	0	1
	DM	Transport equipment		1	1	0	0
	DN	Not elsewhere classified		5	2	0	3
		Total		9	11	8	10
Section E		ELECTRICITY, GAS AND WATER SUPPLY		0	0	0	0
Section F	45	CONSTRUCTION					
	451	Site preparation		0	0	0	0
	452	Building of complete constructions or parts thereof; civil engineering		7	5	14	17
	453	Building installation		0	0	2	1
	454	Building completion		0	2	4	4
	455	Renting of construction or demolition equipment with operator		0	0	0	0
		Total		7	7	20	22
Section G		WHOLESALE AND RETAIL TRADE; REPAIR OF MOTOR VEHICLES, MOTOR CYCLES AND PERSONAL AND HOUSEHOLD GOODS					
	50	Sale, maintenance and repair of motor vehicles and motorcycles; retail sale of automotive fuel		3	0	2	5
	51	Wholesale trade and commission trade, except of motor vehicles and motorcycles		1	1	4	3
	52	Retail trade, except of motor vehicles and motorcycles; repair of personal and household goods		0	2	1	2
		Total		4	3	7	10
Section H	55	HOTELS AND RESTAURANTS					
	551	Hotels		2	1	3	2
	553	Restaurants		6	0	2	2
	554	Bars		3	0	0	2
		Other		0	0	0	0
		Total		11	1	5	6
Section I		TRANSPORT, STORAGE AND COMMUNICATION					
	60	Land transport; transport via pipelines		0	0	1	0
	61	Water transport		0	0	0	0
	62	Air transport		0	1	0	0
	63	Supporting and auxiliary transport activities; activities of travel agencies		0	0	1	1
	64	Post and telecommunications		0	1	0	2
		Total		0	2	2	3
Section J		FINANCIAL INTERMEDIATION					
	66	Insurance and pension funding, except compulsory social security		0	1	0	0
		Other		0	1	3	5
		Total		0	2	3	5
Section K		REAL ESTATE, RENTING AND BUSINESS ACTIVITIES					
	70	Real estate activities		23	36	76	74
	71	Renting of machinery and equipment without operator and of personal and household goods		1	1	0	0
	72	Computer and related activities		0	1	2	3
	73	Research and development		0	0	0	0
	74	Other business activities		14	15	19	19
		Total		38	53	97	96
Section L		PUBLIC ADMINISTRATION AND DEFENCE; COMPULSORY SOCIAL SECURITY		0	0	0	0
Section M		EDUCATION		1	0	0	0
Section N		HEALTH AND SOCIAL WORK		0	1	0	1
Section O		OTHER COMMUNITY, SOCIAL & PERSONAL SERVICE ACTIVITIES		2	2	10	8
Section P		PRIVATE HOUSEHOLDS EMPLOYING STAFF AND UNDIFFERENTIATED PRODUCTION ACTIVITIES OF HOUSEHOLDS FOR OWN USE		0	0	0	0
Section Q		EXTRA-TERRITORIAL ORGANISATIONS AND BODIES		0	0	0	0
ALL OTHERS <sup>2</sup>				6	9	6	16
<b>Total</b>				<b>80</b>	<b>92</b>	<b>159</b>	<b>177</b>

p Provisional.

<sup>1</sup> The Standard Industrial Classification (SIC 2003) definitions can be found at [http://www.statistics.gov.uk/methods\\_quality/sic/downloads/UK\\_SIC\\_Vol1\(2003\).pdf](http://www.statistics.gov.uk/methods_quality/sic/downloads/UK_SIC_Vol1(2003).pdf)

<sup>2</sup> Including unknown or invalid SIC codes and non-trading or dormant companies

### 3b. Administrations (Enterprise Act) by industry (SIC 2003)<sup>1</sup>

England & Wales

not seasonally adjusted

		SIC 2003	2007		2008		
Section	Sub-section	2 digit	3 digit	Q3	Q4	Q1	Q2 p
Section A		AGRICULTURE, HUNTING AND FORESTRY		8	3	4	5
Section B		FISHING		0	0	0	2
Section C		MINING AND QUARRYING		0	2	1	0
Section D		MANUFACTURING					
	DA	Food products, beverages and tobacco		14	5	8	13
	DB	Textiles and textile products		6	5	7	9
	DC	Leather and leather products		1	0	0	2
	DD	Wood and wood products		5	6	7	5
	DE	Pulp, paper and paper products publishing and printing		28	20	41	27
	DF	Coke, refined petroleum products and nuclear fuel		0	0	0	0
	DG	Chemicals, chemical products and man-made fibres		9	3	1	3
	DH	Rubber and plastic products		6	6	14	10
	DI	Other non-metallic mineral products		1	5	3	4
	DJ	Basic metals and fabricated metal products		21	22	30	38
	DK	Machinery and equipment not elsewhere classified		4	8	10	5
	DL	Electrical and optical equipment		13	5	13	12
	DM	Transport equipment		11	12	4	2
	DN	Not elsewhere classified		16	22	34	27
		Total		135	119	172	157
Section E		ELECTRICITY, GAS AND WATER SUPPLY		2	0	0	1
Section F	45	CONSTRUCTION					
	451	Site preparation		1	3	0	2
	452	Building of complete constructions or parts thereof, civil engineering		42	41	59	48
	453	Building installation		20	13	26	27
	454	Building completion		13	11	17	20
	455	Renting of construction or demolition equipment with operator		1	3	7	2
		Total		77	71	109	99
Section G		WHOLESALE AND RETAIL TRADE; REPAIR OF MOTOR VEHICLES, MOTOR CYCLES AND PERSONAL AND HOUSEHOLD GOODS					
	50	Sale, maintenance and repair of motor vehicles and motorcycles; retail sale of automotive fuel		16	10	13	19
	51	Wholesale trade and commission trade, except of motor vehicles and motorcycles		48	36	66	66
	52	Retail trade, except of motor vehicles and motorcycles; repair of personal and household goods		41	25	52	66
		Total		105	71	131	151
Section H	55	HOTELS AND RESTAURANTS					
	551	Hotels		0	4	8	5
	553	Restaurants		21	16	27	22
	554	Bars		5	4	5	9
		Other		4	2	1	6
		Total		30	26	41	42
Section I		TRANSPORT, STORAGE AND COMMUNICATION					
	60	Land transport; transport via pipelines		17	12	14	23
	61	Water transport		0	0	0	1
	62	Air transport		0	1	0	4
	63	Supporting and auxiliary transport activities; activities of travel agencies		9	6	12	8
	64	Post and telecommunications		10	6	4	10
		Total		36	25	30	46
Section J		FINANCIAL INTERMEDIATION					
	66	Insurance and pension funding, except compulsory social security		2	2	6	2
		Other		7	5	6	8
		Total		9	7	12	10
Section K		REAL ESTATE, RENTING AND BUSINESS ACTIVITIES					
	70	Real estate activities		12	24	31	53
	71	Renting of machinery and equipment without operator and of personal and household goods		2	3	7	6
	72	Computer and related activities		19	17	33	39
	73	Research and development		2	3	0	1
	74	Other business activities		136	119	153	198
		Total		171	166	224	297
Section L		PUBLIC ADMINISTRATION AND DEFENCE; COMPULSORY SOCIAL SECURITY		0	0	2	0
Section M		EDUCATION		5	7	11	5
Section N		HEALTH AND SOCIAL WORK		7	5	14	8
Section O		OTHER COMMUNITY, SOCIAL & PERSONAL SERVICE ACTIVITIES		36	27	44	32
Section P		PRIVATE HOUSEHOLDS EMPLOYING STAFF AND UNDIFFERENTIATED PRODUCTION ACTIVITIES OF HOUSEHOLDS FOR OWN USE		0	0	0	1
Section Q		EXTRA-TERRITORIAL ORGANISATIONS AND BODIES		0	0	0	0
ALL OTHERS <sup>2</sup>				45	46	63	82
<b>Total</b>				<b>666</b>	<b>575</b>	<b>858</b>	<b>938</b>

<sup>p</sup> Provisional

<sup>1</sup> The Standard Industrial Classification (SIC 2003) definitions can be found at [http://www.statistics.gov.uk/methods\\_quality/sic/downloads/UK\\_SIC\\_V01\(2003\).pdf](http://www.statistics.gov.uk/methods_quality/sic/downloads/UK_SIC_V01(2003).pdf)

<sup>2</sup> Including unknown or invalid SIC codes and non-trading or dormant companies

# 3c. Company voluntary arrangements by industry (SIC 2003)<sup>1</sup>

England & Wales

not seasonally adjusted

SIC 2003			2007		2008		
Section	Sub-section	2 digit	3 digit	Q3	Q4	Q1	Q2 p
Section A			AGRICULTURE, HUNTING AND FORESTRY	1	0	0	1
Section B			FISHING	0	0	0	0
Section C			MINING AND QUARRYING	0	0	0	0
Section D			MANUFACTURING				
	DA		Food products, beverages and tobacco	0	1	2	1
	DB		Textiles and textile products	0	0	2	3
	DC		Leather and leather products	0	0	0	0
	DD		Wood and wood products	1	0	1	3
	DE		Pulp, paper and paper products publishing and printing	1	2	6	3
	DF		Coke, refined petroleum products and nuclear fuel	0	0	0	1
	DG		Chemicals, chemical products and man-made fibres	0	0	1	1
	DH		Rubber and plastic products	4	0	1	2
	DI		Other non-metallic mineral products	0	0	0	0
	DJ		Basic metals and fabricated metal products	7	3	13	8
	DK		Machinery and equipment not elsewhere classified	0	1	0	0
	DL		Electrical and optical equipment	6	2	1	1
	DM		Transport equipment	0	1	0	0
	DN		Not elsewhere classified	6	2	4	5
			<b>Total</b>	<b>25</b>	<b>12</b>	<b>31</b>	<b>28</b>
Section E			ELECTRICITY, GAS AND WATER SUPPLY	0	0	0	0
Section F	45		CONSTRUCTION				
		451	Site preparation	0	1	3	0
		452	Building of complete constructions or parts thereof; civil engineering	7	8	11	19
		453	Building installation	3	6	3	8
		454	Building completion	5	3	6	1
		455	Renting of construction or demolition equipment with operator	0	0	1	0
			<b>Total</b>	<b>15</b>	<b>18</b>	<b>24</b>	<b>28</b>
Section G			WHOLESALE AND RETAIL TRADE; REPAIR OF MOTOR VEHICLES, MOTOR CYCLES AND PERSONAL AND HOUSEHOLD GOODS				
		50	Sale, maintenance and repair of motor vehicles and motorcycles; retail sale of automotive fuel	3	2	5	1
		51	Wholesale trade and commission trade, except of motor vehicles and motorcycles	9	3	2	4
		52	Retail trade, except of motor vehicles and motorcycles; repair of personal and household goods	8	2	10	3
			<b>Total</b>	<b>20</b>	<b>7</b>	<b>17</b>	<b>8</b>
Section H	55		HOTELS AND RESTAURANTS				
		551	Hotels	0	0	1	3
		553	Restaurants	8	1	3	3
		554	Bars	1	3	1	2
			Other	1	1	3	0
			<b>Total</b>	<b>10</b>	<b>5</b>	<b>8</b>	<b>8</b>
Section I			TRANSPORT, STORAGE AND COMMUNICATION				
		60	Land transport: transport via pipelines	4	2	1	2
		61	Water transport	0	0	0	0
		62	Air transport	0	0	0	0
		63	Supporting and auxiliary transport activities; activities of travel agencies	1	2	1	1
		64	Post and telecommunications	2	1	3	1
			<b>Total</b>	<b>7</b>	<b>5</b>	<b>5</b>	<b>4</b>
Section J			FINANCIAL INTERMEDIATION				
		66	Insurance and pension funding, except compulsory social security	0	1	0	0
			Other	1	0	2	1
			<b>Total</b>	<b>1</b>	<b>1</b>	<b>2</b>	<b>1</b>
Section K			REAL ESTATE, RENTING AND BUSINESS ACTIVITIES				
		70	Real estate activities	4	2	0	4
		71	Renting of machinery and equipment without operator and of personal and household goods	0	0	1	0
		72	Computer and related activities	3	2	10	9
		73	Research and development	1	0	1	0
		74	Other business activities	32	15	24	24
			<b>Total</b>	<b>40</b>	<b>19</b>	<b>36</b>	<b>37</b>
Section L			PUBLIC ADMINISTRATION AND DEFENCE; COMPULSORY SOCIAL SECURITY	0	0	0	1
Section M			EDUCATION	2	3	1	3
Section N			HEALTH AND SOCIAL WORK	1	2	2	1
Section O			OTHER COMMUNITY, SOCIAL & PERSONAL SERVICE ACTIVITIES	4	14	9	6
Section P			PRIVATE HOUSEHOLDS EMPLOYING STAFF AND UNDIFFERENTIATED PRODUCTION ACTIVITIES OF HOUSEHOLDS FOR OWN USE	0	0	0	0
Section Q			EXTRA-TERRITORIAL ORGANISATIONS AND BODIES	0	0	0	0
ALL OTHERS <sup>2</sup>				3	5	5	5
				<b>129</b>	<b>91</b>	<b>140</b>	<b>131</b>

p Provisional.

<sup>1</sup> The Standard Industrial Classification (SIC 2003) definitions can be found at [http://www.statistics.gov.uk/methods\\_quality/sic/downloads/UK\\_SIC\\_Vol1\(2003\).pdf](http://www.statistics.gov.uk/methods_quality/sic/downloads/UK_SIC_Vol1(2003).pdf)

<sup>2</sup> Including unknown or invalid SIC codes and non-trading or dormant companies

### 3d. Creditors' Voluntary Liquidations following England & Wales

not seasonally adjusted

Year		Number of new cases
<b>1998</b>		:
<b>1999</b>		:
<b>2000</b>		:
<b>2001</b>		:
<b>2002</b>		:
<b>2003</b>		0
<b>2004</b>		165
<b>2005</b>		681
<b>2006</b>		914
<b>2007</b>		1,095
<b>1998</b>	Q1	:
	Q2	:
	Q3	:
	Q4	:
<b>1999</b>	Q1	:
	Q2	:
	Q3	:
	Q4	:
<b>2000</b>	Q1	:
	Q2	:
	Q3	:
	Q4	:
<b>2001</b>	Q1	:
	Q2	:
	Q3	:
	Q4	:
<b>2002</b>	Q1	:
	Q2	:
	Q3	:
	Q4	:
<b>2003</b>	Q1	:
	Q2	:
	Q3	0
	Q4	0
<b>2004</b>	Q1	12
	Q2	18
	Q3	36
	Q4	99
<b>2005</b>	Q1	204
	Q2	147
	Q3	149
	Q4	181
<b>2006</b>	Q1	212
	Q2	216
	Q3	244
	Q4	242
<b>2007</b>	Q1	276
	Q2	285
	Q3	264
	Q4	270
<b>2008</b>	Q1	270
	p Q2	223

p Provisional  
: Not applicable

<sup>1</sup> Since the revisions to corporate administration under the Enterprise Act, those administrations which resulted in a Creditors' Voluntary Liquidation (CVL) have been separately recorded by Companies House. These post-Administration new case CVLs are not included under the headline CVL figures at Table 1 as they do not represent a new company entering into an

## 4. Insolvencies Scotland

not seasonally adjusted

Year	Individuals			Companies <sup>1</sup>			
	Total	Sequestrations (No. of LILA <sup>2</sup> )	Protected Trust Deeds	Total	Compulsory Liquidations	Creditors' Voluntary Liquidations	
<b>1998</b>	4,465	3,016	1,449	566	338	228	
<b>1999</b>	5,339	3,195	2,144	572	364	208	
<b>2000</b>	5,766	2,965	2,801	583	344	239	
<b>2001</b>	6,827	3,048	3,779	602	378	224	
<b>2002</b>	8,389	3,215	5,174	788	556	232	
<b>2003</b>	8,780	3,328	5,452	631	436	195	
<b>2004</b>	9,321	3,297	6,024	621	431	190	
<b>2005</b>	11,846	4,965	6,881	569	420	149	
<b>2006</b>	13,638	5,430	8,208	549	416	133	
<b>2007</b>	13,808	6,213	7,595	539	439	100	
<b>1998</b>	Q1	1,016	702	314	150	79	71
	Q2	1,171	756	415	151	93	58
	Q3	1,172	830	342	124	82	42
	Q4	1,106	728	378	141	84	57
<b>1999</b>	Q1	1,213	776	437	153	83	70
	Q2	1,311	807	504	136	89	47
	Q3	1,451	842	609	144	98	46
	Q4	1,364	770	594	139	94	45
<b>2000</b>	Q1	1,395	751	644	136	75	61
	Q2	1,527	751	776	153	92	61
	Q3	1,391	712	679	139	85	54
	Q4	1,453	751	702	155	92	63
<b>2001</b>	Q1	1,503	709	794	166	102	64
	Q2	1,746	750	996	141	82	59
	Q3	1,881	839	1,042	108	75	33
	Q4	1,697	750	947	187	119	68
<b>2002</b>	Q1	1,858	832	1,026	240	170	70
	Q2	2,136	797	1,339	175	123	52
	Q3	2,247	834	1,413	184	139	45
	Q4	2,148	752	1,396	189	124	65
<b>2003</b>	Q1	2,015	799	1,216	183	133	50
	Q2	2,189	858	1,331	168	118	50
	Q3	2,367	845	1,522	154	109	45
	Q4	2,209	826	1,383	126	76	50
<b>2004</b>	Q1	2,154	720	1,434	153	95	58
	Q2	2,160	851	1,309	147	110	37
	Q3	2,441	923	1,518	168	113	55
	Q4	2,566	803	1,763	153	113	40
<b>2005</b>	Q1	2,462	908	1,554	140	103	37
	Q2	2,830	1,307	1,523	159	120	39
	Q3	3,593	1,461	2,132	151	115	36
	Q4	2,961	1,289	1,672	119	82	37
<b>2006</b>	Q1	3,111	1,241	1,870	128	96	32
	Q2	3,544	1,305	2,239	133	99	34
	Q3	3,601	1,528	2,073	156	132	24
	Q4	3,382	1,356	2,026	132	89	43
<b>2007</b>	Q1	3,471	1,505	1,966	166	132	34
	Q2	r 3,492	r 1,600	1,892	165	131	34
	Q3	3,527	1,545	1,982	125	105	20
	Q4	3,318	1,563	1,755	83	71	12
<b>2008</b>	Q1	3,275	1,395	1,880	102	95	7
	p Q2	4,735	2,853 (1,709)	1,882	132	111	21

### Percentage change, latest qtr on corresponding qtr of previous year

<b>2008</b>	Q2	35.6%	78.3%	-0.5%	-20.0%	-15.3%	-38.2%
-------------	----	-------	-------	-------	--------	--------	--------

p Provisional.

r Revised, reflecting amendments to raw data

<sup>1</sup> Including partnerships.

<sup>2</sup> On 1 April 2008, Part 1 of the Bankruptcy and Diligence etc. (Scotland) Act 2007 came into force making significant changes to some aspects of bankruptcy, debt relief and debt enforcement in Scotland. This included the introduction of the new route into bankruptcy for people with low income and low assets (LILA). Of the number or sequestrations, individuals who meet LILA criteria are shown in brackets (See "Notes to Editors" paragraph 13).

# 4a Compulsory liquidations by industry (SIC 2003)<sup>1</sup>

Scotland

not seasonally adjusted

		SIC 2003		2007 <sup>2</sup>				2008		
Section	Sub-section n	2 digit	3 digit							
					Q1	Q2	Q3	Q4	Q1	Q2 p
Section A				AGRICULTURE, HUNTING AND FORESTRY	1	0	3	0	0	0
Section B				FISHING	0	0	0	0	0	0
Section C				MINING AND QUARRYING	0	0	0	1	0	0
Section D				MANUFACTURING						
	DA			Food products, beverages and tobacco	0	1	0	0	0	1
	DB			Textiles and textile products	3	1	1	2	0	1
	DC			Leather and leather products	0	0	0	0	0	0
	DD			Wood and wood products	0	1	1	0	0	0
	DE			Pulp, paper and paper products publishing and printing	0	5	2	1	2	1
	DF			Coke, refined petroleum products and nuclear fuel	0	0	0	0	0	0
	DG			Chemicals, chemical products and man-made fibres	0	0	0	0	0	0
	DH			Rubber and plastic products	0	0	0	0	0	0
	DI			Other non-metallic mineral products	1	0	0	0	0	1
	DJ			Basic metals and fabricated metal products	3	2	2	0	1	1
	DK			Machinery and equipment not elsewhere classified	1	0	0	0	0	1
	DL			Electrical and optical equipment	1	1	0	0	0	0
	DM			Transport equipment	0	1	0	0	0	0
	DN			Not elsewhere classified	2	2	1	0	0	2
				<b>Total</b>	<b>11</b>	<b>14</b>	<b>7</b>	<b>3</b>	<b>3</b>	<b>8</b>
Section E				ELECTRICITY, GAS AND WATER SUPPLY	0	0	0	0	0	1
Section F	45			CONSTRUCTION						
	451			Site preparation	0	0	1	0	0	1
	452			Building of complete constructions or parts thereof, civil engineering	9	7	8	5	8	6
	453			Building installation	2	6	5	4	8	4
	454			Building completion	4	4	3	3	3	4
	455			Renting of construction or demolition equipment with operator	2	0	0	0	0	0
				<b>Total</b>	<b>17</b>	<b>17</b>	<b>17</b>	<b>12</b>	<b>19</b>	<b>15</b>
Section G				WHOLESALE AND RETAIL TRADE; REPAIR OF MOTOR VEHICLES, MOTOR CYCLES AND PERSONAL AND HOUSEHOLD GOODS						
	50			Sale, maintenance and repair of motor vehicles and motorcycles; retail sale of automotive fuel	2	1	2	0	2	3
	51			Wholesale trade and commission trade, except of motor vehicles and motorcycles	2	4	6	1	2	3
	52			Retail trade, except of motor vehicles and motorcycles; repair of personal and household goods	5	8	8	3	7	5
				<b>Total</b>	<b>9</b>	<b>13</b>	<b>16</b>	<b>4</b>	<b>11</b>	<b>11</b>
Section H	55			HOTELS AND RESTAURANTS						
	551			Hotels	1	2	2	0	0	3
	553			Restaurants	8	3	2	3	2	4
	554			Bars	9	6	1	1	1	4
				Other	4	2	1	0	0	1
				<b>Total</b>	<b>22</b>	<b>13</b>	<b>6</b>	<b>4</b>	<b>3</b>	<b>12</b>
Section I				TRANSPORT, STORAGE AND COMMUNICATION						
	60			Land transport; transport via pipelines	1	4	2	2	2	2
	61			Water transport	0	1	0	0	0	0
	62			Air transport	0	1	0	0	0	0
	63			Supporting and auxiliary transport activities; activities of travel agencies	0	1	1	0	2	1
	64			Post and telecommunications	0	0	0	1	1	1
				<b>Total</b>	<b>1</b>	<b>7</b>	<b>3</b>	<b>3</b>	<b>5</b>	<b>4</b>
Section J				FINANCIAL INTERMEDIATION						
	66			Insurance and pension funding, except compulsory social security	0	0	0	0	1	0
				Other	0	0	1	0	1	0
				<b>Total</b>	<b>0</b>	<b>0</b>	<b>1</b>	<b>0</b>	<b>2</b>	<b>0</b>
Section K				REAL ESTATE, RENTING AND BUSINESS ACTIVITIES						
	70			Real estate activities	4	8	7	1	3	4
	71			Renting of machinery and equipment without operator and of personal and household goods	2	1	0	1	1	0
	72			Computer and related activities	9	2	3	2	3	4
	73			Research and development	0	0	0	1	2	0
	74			Other business activities	41	49	31	26	33	37
				<b>Total</b>	<b>56</b>	<b>60</b>	<b>41</b>	<b>31</b>	<b>42</b>	<b>45</b>
Section L				PUBLIC ADMINISTRATION AND DEFENCE; COMPULSORY SOCIAL SECURITY	1	0	0	0	0	0
Section M				EDUCATION	1	2	1	1	2	1
Section N				HEALTH AND SOCIAL WORK	0	0	0	1	3	2
Section O				OTHER COMMUNITY, SOCIAL & PERSONAL SERVICE ACTIVITIES	8	3	6	6	2	4
Section P				PRIVATE HOUSEHOLDS EMPLOYING STAFF AND UNDIFFERENTIATED PRODUCTION ACTIVITIES OF HOUSEHOLDS	0	0	0	0	0	0
Section Q				EXTRA-TERRITORIAL ORGANISATIONS AND BODIES	0	0	0	0	0	0
ALL OTHERS <sup>2</sup>					5	2	4	5	3	8
<b>Total</b>					<b>132</b>	<b>131</b>	<b>105</b>	<b>71</b>	<b>95</b>	<b>111</b>

p Provisional.

<sup>1</sup> The Standard Industrial Classification (SIC 2003) definitions can be found at [http://www.statistics.gov.uk/methods\\_quality/sic/downloads/UK\\_SIC\\_Vol1\(2003\).pdf](http://www.statistics.gov.uk/methods_quality/sic/downloads/UK_SIC_Vol1(2003).pdf)

<sup>2</sup> Including unknown or invalid SIC codes and non-trading or dormant companies

<sup>3</sup> Prior to Q1 2007, company liquidations in Scotland were classified according to the Insolvency Trade Classifications (ITC); these breakdowns are available at <http://www.insolvency.gov.uk/otherinformation/statistics/200702/table7.htm> from Q1 1998 to Q4 2006.

# 4b Creditors' voluntary liquidations by industry (SIC 2003)<sup>1</sup>

Scotland

not seasonally adjusted

		SIC 2003		2007 <sup>2</sup>				2008	
Section	Sub-section n	2 digit	3 digit	Q1	Q2	Q3	Q4	Q1	Q2 p
Section A			AGRICULTURE, HUNTING AND FORESTRY	0	0	0	0	0	0
Section B			FISHING	0	0	0	0	0	0
Section C			MINING AND QUARRYING	0	0	0	0	0	0
Section D			MANUFACTURING						
	DA		Food products, beverages and tobacco	0	0	0	0	0	1
	DB		Textiles and textile products	1	0	0	0	0	0
	DC		Leather and leather products	0	0	0	0	0	0
	DD		Wood and wood products	0	0	0	0	0	0
	DE		Pulp, paper and paper products publishing and printing	0	0	0	1	0	0
	DF		Coke, refined petroleum products and nuclear fuel	0	0	0	0	0	0
	DG		Chemicals, chemical products and man-made fibres	0	0	0	0	0	0
	DH		Rubber and plastic products	0	0	0	0	0	0
	DI		Other non-metallic mineral products	0	0	0	1	0	0
	DJ		Basic metals and fabricated metal products	0	2	0	0	0	0
	DK		Machinery and equipment not elsewhere classified	0	0	2	0	1	1
	DL		Electrical and optical equipment	0	0	0	0	0	0
	DM		Transport equipment	0	0	1	0	0	0
	DN		Not elsewhere classified	0	2	0	0	0	0
			<b>Total</b>	<b>1</b>	<b>4</b>	<b>3</b>	<b>2</b>	<b>1</b>	<b>2</b>
Section E			ELECTRICITY, GAS AND WATER SUPPLY	0	1	0	0	0	0
Section F	45		CONSTRUCTION						
	451		Site preparation	0	0	0	0	0	0
	452		Building of complete constructions or parts thereof, civil engineering	5	2	2	2	0	1
	453		Building installation	0	3	1	1	2	0
	454		Building completion	1	0	0	0	0	1
	455		Renting of construction or demolition equipment with operator	0	0	0	0	0	0
			<b>Total</b>	<b>6</b>	<b>5</b>	<b>3</b>	<b>3</b>	<b>2</b>	<b>2</b>
Section G			WHOLESALE AND RETAIL TRADE; REPAIR OF MOTOR VEHICLES, MOTOR CYCLES AND PERSONAL AND HOUSEHOLD GOODS						
	50		Sale, maintenance and repair of motor vehicles and motorcycles; retail sale of automotive fuel	2	0	1	0	0	0
	51		Wholesale trade and commission trade, except of motor vehicles and motorcycles	0	1	1	0	1	0
	52		Retail trade, except of motor vehicles and motorcycles; repair of personal and household goods	3	5	3	0	1	1
			<b>Total</b>	<b>5</b>	<b>6</b>	<b>5</b>	<b>0</b>	<b>2</b>	<b>1</b>
Section H	55		HOTELS AND RESTAURANTS						
	551		Hotels	0	0	0	0	0	0
	553		Restaurants	1	1	0	0	0	0
	554		Bars	1	0	1	0	0	0
			Other	1	0	0	0	0	0
			<b>Total</b>	<b>3</b>	<b>1</b>	<b>1</b>	<b>0</b>	<b>0</b>	<b>0</b>
Section I			TRANSPORT, STORAGE AND COMMUNICATION						
	60		Land transport; transport via pipelines	0	3	0	1	0	0
	61		Water transport	0	1	0	0	0	0
	62		Air transport	0	0	0	0	0	0
	63		Supporting and auxiliary transport activities; activities of travel agencies	1	0	0	0	0	1
	64		Post and telecommunications	0	0	0	0	0	0
			<b>Total</b>	<b>1</b>	<b>4</b>	<b>0</b>	<b>1</b>	<b>0</b>	<b>1</b>
Section J			FINANCIAL INTERMEDIATION						
	66		Insurance and pension funding, except compulsory social security	1	0	0	0	0	0
			Other	0	0	0	0	0	0
			<b>Total</b>	<b>1</b>	<b>0</b>	<b>0</b>	<b>0</b>	<b>0</b>	<b>0</b>
Section K			REAL ESTATE, RENTING AND BUSINESS ACTIVITIES						
	70		Real estate activities	2	0	0	0	0	1
	71		Renting of machinery and equipment without operator and of personal and household goods	0	0	0	0	0	1
	72		Computer and related activities	0	2	0	0	0	1
	73		Research and development	1	0	0	1	0	0
	74		Other business activities	11	9	5	4	2	4
			<b>Total</b>	<b>14</b>	<b>11</b>	<b>5</b>	<b>5</b>	<b>2</b>	<b>7</b>
Section L			PUBLIC ADMINISTRATION AND DEFENCE: COMPULSORY SOCIAL SECURITY	0	0	0	0	0	1
Section M			EDUCATION	0	0	0	0	0	0
Section N			HEALTH AND SOCIAL WORK	0	1	0	0	0	0
Section O			OTHER COMMUNITY, SOCIAL & PERSONAL SERVICE ACTIVITIES	0	1	3	1	0	0
Section P			PRIVATE HOUSEHOLDS EMPLOYING STAFF AND UNDIFFERENTIATED PRODUCTION ACTIVITIES OF HOUSEHOLDS	0	0	0	0	0	0
Section Q			EXTRA-TERRITORIAL ORGANISATIONS AND BODIES	0	0	0	0	0	0
ALL OTHERS <sup>2</sup>				3	0	0	0	0	7
<b>Total</b>				<b>34</b>	<b>34</b>	<b>20</b>	<b>12</b>	<b>7</b>	<b>21</b>

p Provisional.

<sup>1</sup> The Standard Industrial Classification (SIC 2003) definitions can be found at [http://www.statistics.gov.uk/methods\\_quality/sic/downloads/UK\\_SIC\\_Vol1\(2003\).pdf](http://www.statistics.gov.uk/methods_quality/sic/downloads/UK_SIC_Vol1(2003).pdf)

<sup>2</sup> Including unknown or invalid SIC codes and non-trading or dormant companies

<sup>3</sup> Prior to Q1 2007, company liquidations in Scotland were classified according to the Insolvency Trade Classifications (ITC); these breakdowns are available at <http://www.insolvency.gov.uk/otherinformation/statistics/200702/table7.htm> from Q1 1998 to Q4 2006.

## 5. Receiverships, Administrations and Company Voluntary Arrangements<sup>1</sup>

Scotland

not seasonally adjusted

Year		Receivership Appointments	Administrator Appointments <sup>2</sup>	In Administration (Enterprise Act 2002) <sup>2</sup>	Company Voluntary Arrangements
<b>1998</b>		83	3	:	2
<b>1999</b>		69	3	:	0
<b>2000</b>		108	6	:	2
<b>2001</b>		97	4	:	3
<b>2002</b>		118	12	:	2
<b>2003</b>		118	6	3	7
<b>2004</b>		82	0	31	6
<b>2005</b>		56	0	55	8
<b>2006</b>		34	0	86	5
<b>2007</b>		75	0	37	6
<b>1998</b>	Q1	16	2	:	0
	Q2	17	1	:	2
	Q3	19	0	:	0
	Q4	31	0	:	0
<b>1999</b>	Q1	22	3	:	0
	Q2	21	0	:	0
	Q3	17	0	:	0
	Q4	9	0	:	0
<b>2000</b>	Q1	24	2	:	1
	Q2	35	1	:	0
	Q3	30	0	:	1
	Q4	19	3	:	0
<b>2001</b>	Q1	26	2	:	1
	Q2	27	1	:	1
	Q3	19	1	:	1
	Q4	25	0	:	0
<b>2002</b>	Q1	26	5	:	0
	Q2	26	3	:	1
	Q3	29	3	:	1
	Q4	37	1	:	0
<b>2003</b>	Q1	41	4	0	0
	Q2	21	1	0	3
	Q3	36	1	1	1
	Q4	20	0	2	3
<b>2004</b>	Q1	30	0	9	1
	Q2	23	0	11	4
	Q3	13	0	7	0
	Q4	16	0	4	1
<b>2005</b>	Q1	27	0	8	1
	Q2	9	0	7	4
	Q3	12	0	19	2
	Q4	8	0	21	1
<b>2006</b>	Q1	11	0	28	2
	Q2	16	0	20	1
	Q3	3	0	18	1
	Q4	4	0	20	1
<b>2007</b>	Q1	9	0	15	2
	Q2	22	0	11	1
	Q3	8	0	6	2
	Q4	36	0	5	1
<b>2008</b>	Q1	56	0	12	0
	p Q2	17	0	35	2

p Provisional

: Not applicable

<sup>1</sup> Registered at Companies House (Scotland)

<sup>2</sup> See paragraph 7 of the Press Release "Notes to Editors" for changes wef 15 September 2003 under the Enterprise Act 2002

## 6. Insolvencies Northern Ireland

not seasonally adjusted

Year		Individuals		Companies			
		Total	Bankruptcy Orders	Individual Voluntary Arrangements	Total	Compulsory Liquidations	Creditors' Voluntary Liquidations
<b>1998</b>		517	394	123	..	63	..
<b>1999</b>		573	401	172	..	58	..
<b>2000</b>		616	349	267	..	83	..
<b>2001</b>		468	292	176	..	60	..
<b>2002</b>		541	334	207	102	49	53
<b>2003</b>		835	517	318	142	95	47
<b>2004</b>		1,115	666	449	121	76	45
<b>2005</b>		1,454	821	633	138	85	53
<b>2006</b>		1,809	1,035	774	128	78	50
<b>2007</b>		1,338	898	440	164	122	42
<b>1998</b>	Q1	130	99	31	..	17	..
	Q2	150	118	32	..	22	..
	Q3	108	82	26	..	12	..
	Q4	129	95	34	..	12	..
<b>1999</b>	Q1	147	110	37	..	16	..
	Q2	131	100	31	..	14	..
	Q3	108	68	40	..	14	..
	Q4	187	123	64	..	14	..
<b>2000</b>	Q1	202	104	98	..	22	..
	Q2	171	116	55	..	27	..
	Q3	110	54	56	..	15	..
	Q4	133	75	58	..	19	..
<b>2001</b>	Q1	137	86	51	..	16	..
	Q2	137	88	49	..	18	..
	Q3	79	37	42	..	11	..
	Q4	115	81	34	..	15	..
<b>2002</b>	Q1	121	74	47	24	12	12
	Q2	143	85	58	19	5	14
	Q3	121	74	47	33	17	16
	Q4	156	101	55	26	15	11
<b>2003</b>	Q1	146	90	56	37	30	7
	Q2	219	141	78	42	25	17
	Q3	205	109	96	29	19	10
	Q4	265	177	88	34	21	13
<b>2004</b>	Q1	253	155	98	35	19	16
	Q2	282	173	109	39	27	12
	Q3	286	165	121	28	20	8
	Q4	294	173	121	19	10	9
<b>2005</b>	Q1	302	174	128	29	15	14
	Q2	438	241	197	47	28	19
	Q3	320	193	127	31	19	12
	Q4	394	213	181	31	23	8
<b>2006</b>	Q1	408	245	163	29	19	10
	Q2	494	285	209	41	24	17
	Q3	425	241	184	28	15	13
	Q4	482	264	218	30	20	10
<b>2007</b>	Q1	343	218	125	36	29	7
	Q2	338	228	110	38	29	9
	Q3	338	227	111	42	28	14
	Q4	319	225	94	48	36	12
<b>2008</b>	Q1	330	226	104	42	37	5
	p Q2	479	331	148	57	42	15
<b>Percentage change, latest qtr on corresponding qtr of previous year</b>							
<b>2008</b>	Q2	41.7%	45.2%	34.5%	50.0%	44.8%	66.7%

p Provisional  
.. Not available

## 7. Rate of company liquidations<sup>1</sup>

Year		England & Wales		Scotland	
		% of Active Register	% of Total Register <sup>2</sup>	% of Active Register	% of Total Register <sup>2</sup>
1998	Q1	1.2	1.0	0.8	0.7
	Q2	1.2	1.0	0.8	0.7
	Q3	1.2	1.0	0.8	0.7
	Q4	1.2	1.0	0.9	0.8
1999	Q1	1.2	1.1	0.8	0.8
	Q2	1.2	1.1	0.8	0.7
	Q3	1.2	1.1	0.8	0.8
	Q4	1.2	1.0	0.8	0.7
2000	Q1	1.1	1.0	0.8	0.7
	Q2	1.1	1.0	0.8	0.7
	Q3	1.1	1.0	0.8	0.7
	Q4	1.1	1.0	0.8	0.7
2001	Q1	1.1	1.0	0.8	0.7
	Q2	1.1	1.0	0.8	0.7
	Q3	1.1	1.0	0.7	0.7
	Q4	1.1	1.0	0.8	0.7
2002	Q1	1.1	1.0	0.9	0.8
	Q2	1.1	1.0	0.9	0.8
	Q3	1.1	1.0	1.0	0.9
	Q4	1.1	1.0	1.0	0.9
2003	Q1	1.1	1.0	0.9	0.8
	Q2	1.0	0.9	0.8	0.8
	Q3	1.0	0.9	0.8	0.7
	Q4	0.9	0.8	0.7	0.6
2004	Q1	0.8	0.8	0.6	0.6
	Q2	0.8	0.7	0.6	0.5
	Q3	0.7	0.7	0.6	0.5
	Q4	0.7	0.6	0.6	0.6
2005	Q1	0.7	0.6	0.6	0.5
	Q2	0.7	0.6	0.6	0.5
	Q3	0.7	0.6	0.6	0.5
	Q4	0.7	0.6	0.5	0.5
2006	Q1	0.7	0.6	0.5	0.5
	Q2	0.7	0.6	0.5	0.4
	Q3	0.7	0.6	0.5	0.4
	Q4	0.6	0.6	0.5	0.4
2007	Q1	0.6	0.6	0.5	0.5
	Q2	0.6	0.5	0.5	0.5
	Q3	0.6	0.5	0.5	0.4
	Q4	0.6	0.5	0.4	0.4
2008	Q1	0.6	0.5	0.4	0.3
	p Q2	0.6	0.5	0.3	0.3

p provisional

<sup>1</sup> Calculated from company liquidations in the latest twelve month period divided by the average number of companies in that period. As from Q2 2008, register figures supplied

by Companies House are counted at the end of each calendar month; previously they were monthly averages

<sup>2</sup> The total register includes companies being wound up or dormant.