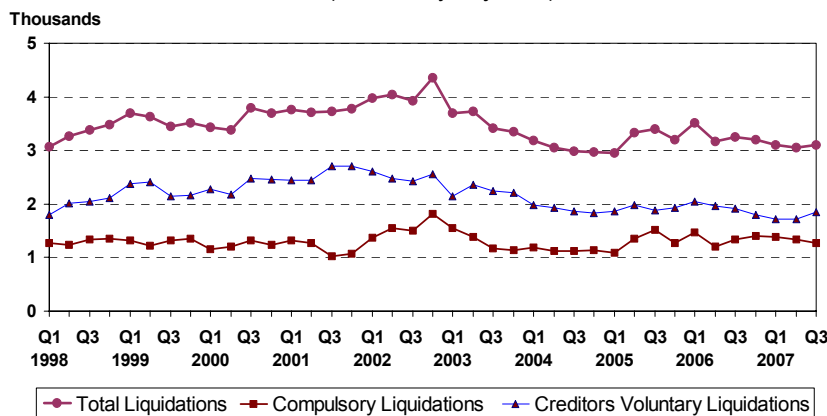


STRICTLY EMBARGOED UNTIL 9.30 AM, 2 November 2007

STATISTICS RELEASE: INSOLVENCIES IN THE THIRD QUARTER 2007

Statistics showing insolvencies in the second quarter 2007 are published today (2 November) by the Insolvency Service.

Number of Company Liquidations in England and Wales
(Seasonally Adjusted)



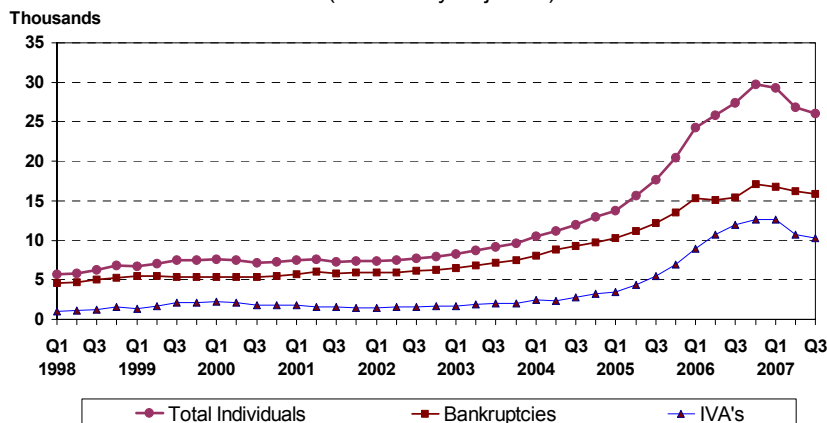
Source: Insolvency Service

COMPANY LIQUIDATIONS

There were 3,106 liquidations in England and Wales in the third quarter of 2007 on a seasonally adjusted basis. This was an increase of 1.8% on the previous quarter and a decrease of 4.4% on the same period a year ago.

This was made up of 1,264 compulsory liquidations, a decrease of 5.8% on the previous quarter and a decrease of 5.4% on the corresponding quarter of the previous year, and 1,842 creditors voluntary liquidations, an increase of 7.7% on the previous quarter and a decrease of 3.8% on the corresponding quarter of the previous year.

Number of Individual Insolvencies in England and Wales
(Seasonally Adjusted)



Source: Insolvency Service

0.6% of active companies went into liquidation in the twelve months ended Q3 2007, the same as the previous quarter and down from 0.7% in the corresponding quarter of 2006.

INDIVIDUAL INSOLVENCIES

There were 26,072 individual insolvencies in England and Wales in the third quarter of 2007 on a seasonally adjusted basis. This was a decrease of 3.0% on the previous quarter and a decrease of 5.0% on the same period a year ago.

This was made up of 15,833 bankruptcies, a decrease of 2.1% on the previous quarter and an increase of 2.2% on the corresponding quarter of the previous year, and 10,239 Individual Voluntary Arrangements (IVAs), a decrease of 4.3% on the previous quarter and a decrease of 14.3% on the corresponding quarter of the previous year.

Number of Insolvencies in England and Wales (seasonally adjusted) ¹

		2006 Q3	2006 Q4	2007 Q1	2007 Q2r	2007 Q3p	Percentage change	
							Q3 2007 on: Q2 2007	Q3 2007 on: Q3 2006
Company Liquidations		3,250	3,202	3,097	3,051	3,106	1.8	-4.4
of which:	Compulsory	1,335	1,406	1,382	1,341	1,264	-5.8	-5.4
	Creditors	1,914	1,796	1,714	1,710	1,842	7.7	-3.8
	Voluntary							
Individuals		27,430	29,715	29,338	26,869	26,072	-3.0	-5.0
of which:	Bankruptcies	15,486	17,070	16,742	16,170	15,833	-2.1	2.2
	IVAs	11,944	12,645	12,597	10,699	10,239	-4.3	-14.3

p = provisional, r = revised

1. Longer series back to 1998 are presented in the accompanying detailed tables

INSOLVENCIES IN SCOTLAND AND NORTHERN IRELAND

The following tables present recent trends in insolvencies in Scotland and Northern Ireland, complementing those for England and Wales above (longer series back to 1998 are presented in the accompanying detailed tables).

Number of Insolvencies in Scotland (not seasonally adjusted)

		2006 Q3	2006 Q4	2006 Q1	2007 Q2	2007 Q3p	Percentage change	
							Q3 2007 on: Q2 2007	Q3 2007 on: Q3 2006
Company Liquidations		156	132	166	165	125	-24.2	-19.9
of which:	Compulsory	132	89	132	131	105	-19.8	-20.5
	Creditors	24	43	34	34	20	-41.2	-16.7
	Voluntary							
Individuals		3,601	3,382	3,471	3,498	3,527	0.8	-2.1
of which:	Sequestrations	1,528	1,356	1,505	1,606	1,545	-3.8	1.1
	Protected Trust Deeds	2,073	2,026	1,966	1,892	1,982	4.8	-4.4

p = provisional

Number of Insolvencies in Northern Ireland (not seasonally adjusted)

		2006 Q3	2006 Q4	2007 Q1	2007 Q2	2007 Q3p	Percentage change	
							Q3 2007 on: Q2 2007	Q3 2007 on: Q3 2006
Company Liquidations		28	30	36	38	42	10.5	50.0
of which:	Compulsory	15	20	29	29	28	-3.4	86.7
	Creditors	13	10	7	9	14	55.6	7.7
	Voluntary							
Individuals		425	482	343	338	337	-0.3	-20.7
of which:	Bankruptcies	241	264	218	228	226	-0.9	-6.2
	IVAs	184	218	125	110	111	0.9	-39.7

p = provisional

Notes to Editors

1. The official Insolvency Statistics are the most comprehensive record of the number of corporate and individual insolvencies in England and Wales. Insolvencies in Scotland and Northern Ireland are also included, but are shown separately as they are covered by separate legislation, there are some differences in definition, and policy responsibility for them lies within the devolved administrations.
2. The statistics for England and Wales are derived from administrative records of the department for Business Enterprise and Regulatory Reform (BERR), Insolvency Service and Companies House Executive Agencies. For Scotland, the company insolvency statistics are derived from administrative records at Companies House, Scotland. Figures for individual insolvencies in Scotland are provided by the Office of the Accountant in Bankruptcy (AIB). The Northern Ireland statistics are derived from administrative records of the DETI Insolvency Service and Companies Registry.
3. Numbers of insolvencies are not directly comparable with official estimates of business stock, formations or closures. Statistics of business start-ups and closures that are directly comparable with each other have been assembled from VAT records and are published by BERR. The latest figures are those for 2006, and were issued in a BERR press notice on 22 August 2007. More detailed figures are available via the on-line database NOMIS. Additionally, analysis into the number of firms in the United Kingdom estimated the total number of businesses at the start of 2006 at 4.5 million.
4. The X11ARIMA program (developed by Statistics Canada) is used for the seasonal adjustment of the insolvency statistics for England and Wales, this being the recommended program within UK National Statistics. The data series covering Scotland and Northern Ireland do not demonstrate consistent seasonality and only the raw (unadjusted) series are presented.
5. Insolvent companies in England & Wales and Scotland are dealt with under the Insolvency Act of 1986 and, in Northern Ireland, by the Insolvency (Northern Ireland) Order 1989. They can **either** be the subject of a **compulsory liquidation** (winding-up) order obtained from the court by a creditor, shareholder or director **or** themselves pass a resolution, subject to the approval of a creditors' meeting that the company be wound up voluntarily (**creditors voluntary liquidations**, registered at Companies House/Companies Registry). In either case they are said to have been **wound-up**, and numbers are given in Tables 1, 6 and 8. A third type of winding-up, members' voluntary liquidation, is not included because it does not involve insolvency.
6. The Insolvency Act 1986 and, in Northern Ireland, the Insolvency (Northern Ireland) Order 1989 also introduced the procedures of **company administration orders** and **company voluntary arrangements (CVAs)**. The administration procedure gives a period of time during which creditors are restrained from taking action and a court appointed administrator puts forward proposals to deal with the company's financial difficulties. The CVA procedure aids business by enabling a company in financial difficulty to come to a binding agreement with its creditors. These are listed separately under Table 3 for England and Wales and Table 7 for Scotland.
7. The Enterprise Act 2002 introduced revisions to the corporate administration procedures, replacing Part II of the Insolvency Act 1986 with Schedule B1. These include the introduction of additional entry routes into administration that do not require the making of an administration order and a streamlined process for **Administrations** whereby a company can in some circumstances be dissolved without recourse to liquidation. The

primary objective of administration (and of CVAs) is the rescue of the company as a going concern; where liquidation does result these cases will be recorded under the insolvency figures at Tables 1 and 6. These provisions came into force on 15th September 2003 and **Administrations under the Enterprise Act** have been included on Tables 3 and 7 from Q3 2003 (dissolution follows 3 months after a notice is filed with the Registrar of Companies, if no objections are raised by the court). On 27th March 2006 the Insolvency (Northern Ireland) Order 2005 introduced similar revisions to the corporate administration procedures in Northern Ireland, replacing Part III of the Insolvency (Northern Ireland) Order 1989 with Schedule B1.

8. **Receivership appointments** comprise **administrative receivers** appointed under the 1986 Act (and the 1989 Order for Northern Ireland) and certain other receivership appointments, for example under the Law of Property Act 1925. Due to the use of the same statutory documentation for different types of receivership, it is not possible to give a breakdown between them. The provisions of the Enterprise Act 2002 [section 250] (Insolvency [Northern Ireland] Order 2005 [Article 5]) have made some changes to the procedures for administrative receivership.

9. Individual insolvencies in England and Wales and in Northern Ireland are made up of **bankruptcy orders** and **individual voluntary arrangements (IVAs)**. Insolvent individuals in England and Wales are dealt with mainly under the Insolvency Act 1986. A bankruptcy order is made on the petition of the debtor or one or more of his creditors when the court is satisfied that there is no prospect of the debt being paid. (Figures for bankruptcy orders include orders relating to the estates of deceased debtors). There are also individual voluntary arrangements (IVAs) and deeds of arrangement (the latter under the Deeds of Arrangement Act 1914), which enable debtors to come to an agreement with their creditors. Table 2 summarises the above procedures (IVAs and Deeds of Arrangement are now included under a single column) and Table 2b provides bankruptcy orders further split by petition type. Changes to bankruptcy law in England and Wales introduced by the Enterprise Act 2002 came into force on 1 April 2004 – the Act made no changes to the existing individual voluntary arrangement regime.

10. Table 2c records numbers of Income Payments Orders (IPOs) and Income Payments Agreements (IPAs) where the bankrupt makes regular payments from surplus income towards his/her debts for a period of time, either by court order or by agreement. The figures record numbers of IPOs/IPAs made in each period, they do not, in general, relate to the date of the original bankruptcy order. Table 2c records a number of IPAs before Q2 2004 because the IPA provisions of the Enterprise Act 2002 (commenced on 1 April 2004) were applicable, upon commencement, to pre-commencement bankruptcies. The revision made to numbers of IPOs between 1998 Q2 and 2004 Q1, to bring them into line with figures published in The Insolvency Service Annual Reports, is considered to provide a more accurate measure of the actual numbers of IPOs obtained and reported by the Official Receivers for this period than those previously published here. Series covering numbers of Bankruptcy Restriction Orders and Undertakings previously also recorded under Table 2c have been temporarily withdrawn while the underlying data are reviewed.

11. Insolvent individuals in Scotland (Table 6) are subject to **sequestration** (bankruptcy) or **protected trust deeds** under the Bankruptcy (Scotland) Act 1985 (as amended). This Act was amended by the Bankruptcy (Scotland) Act 1993. Protected trust deeds are voluntary arrangements in Scotland, but although they fulfil much the same role as individual voluntary arrangements, there are important differences in the way they are set up and administered. Details of both sequestrations and protected trust deeds are

found on the register of insolvencies, which is maintained by the Accountant in Bankruptcy. Further information about insolvency in Scotland can be found on the Accountant's website at www.aib.gov.uk.

12. Insolvent individuals in Northern Ireland are dealt with under the Insolvency (Northern Ireland) Order 1989 and are recorded under Table 8. On 27 March 2006 the Insolvency (Northern Ireland) Order 2005 came into operation and implemented similar changes to bankruptcy procedures as the Enterprise Act 2002 introduced in England and Wales. Further information about insolvency in Northern Ireland can be found on their website at www.insolvencyservice.detini.gov.uk.

13. Under the Insolvency Act 1986 and the Insolvent Partnerships Order and, in Northern Ireland, the Insolvency (Northern Ireland) Order 1989 and the Insolvent Partnerships Order (Northern Ireland) 1995, insolvent partnerships may be wound up as an unregistered company or administered following bankruptcy orders against the partners. Insolvent Partnerships can also enter administration or a voluntary arrangement.

14. Company liquidations and bankruptcy orders (relating to the self-employed) in England and Wales broken down by industry are not currently available due to development work to update the classification of new cases to the Standard Industrial Classification (SIC) 2003. This will bring them into line with other official statistics. Industry breakdowns for England and Wales are published one quarter in arrears of the headline series and figures according to the previously used Insolvency Trade Classification (ITC) are available up to Q3 2006. However, the broad split of bankruptcy orders into self-employed and other individuals is available under Table 2b.

15. Company liquidations in Scotland are now available based on the SIC2003 industry breakdown and these can be found in Table 6b. Earlier data are available separately classified according to the Insolvency Trade Breakdown (ITC).

16. Information concerning insolvency legislation and procedure in England and Wales may be obtained from the Insolvency Service website at www.insolvency.gov.uk. Additionally, details of recent insolvency research and policy evaluation can be found at <http://www.insolvency.gov.uk/insolvencyprofessionandlegislation/insolvencylaw.htm>.

National Statistics

National Statistics are produced to high professional standards set out in the National Statistics Code of Practice. They undergo regular quality assurance reviews to ensure that they meet customer needs. They are produced free from any political interference.

You can find a range of National Statistics on the Internet – www.statistics.gov.uk

Press Enquiries: Lorna Dennis
Insolvency Service Press Officer
Tel: +44 (0)20 7637 6279
Fax: +44 (0)20 7291 6731

Non Media Enquiries

Policy Directorate : Statistics
Gary Mills +44 (0)20 7637 6504
Mita Kerai +44 (0)20 7637 6443
Margaret Sims +44 (0)20 7637 6443
E-Mail:
gary.mills@insolvency.gsi.gov.uk
mita.kerai@insolvency.gsi.gov.uk
margaret.sims@insolvency.gsi.gov.uk

Internet:
<http://www.insolvency.gov.uk/otherinformation/statistics/insolv.htm>

Out of hours cover
Public Enquiries +44 (0)20 7215 5000
Textphone +44 (0)20 7215 6740
(for those with hearing impairment)

1. COMPANY LIQUIDATIONS* IN ENGLAND AND WALES

Years	Not Seasonally Adjusted			Seasonally Adjusted		
	Total	Compulsory Liquidations	Creditors' Voluntary Liquidations	Total	Compulsory Liquidations	Creditors' Voluntary Liquidations
1998	13,203	5,216	7,987			
1999	14,280	5,209	9,071			
2000	14,317	4,925	9,392			
2001	14,972	4,675	10,297			
2002	16,306	6,231	10,075			
2003	14,184	5,234	8,950			
2004	12,192	4,584	7,608			
2005	12,893	5,233	7,660			
2006	13,137	5,418	7,719			
1998 Q1	3,265	1,333	1,932	3,077	1,276	1,801
Q2	3,251	1,312	1,939	3,262	1,242	2,021
Q3	3,323	1,275	2,048	3,387	1,341	2,046
Q4	3,364	1,296	2,068	3,477	1,358	2,119
1999 Q1	3,912	1,379	2,533	3,691	1,320	2,371
Q2	3,590	1,294	2,296	3,624	1,220	2,404
Q3	3,376	1,240	2,136	3,451	1,313	2,139
Q4	3,402	1,296	2,106	3,514	1,356	2,158
2000 Q1	3,637	1,210	2,427	3,438	1,157	2,281
Q2	3,370	1,300	2,070	3,385	1,213	2,172
Q3	3,709	1,231	2,478	3,797	1,316	2,480
Q4	3,601	1,184	2,417	3,698	1,239	2,459
2001 Q1	3,943	1,359	2,584	3,759	1,314	2,445
Q2	3,684	1,348	2,336	3,709	1,263	2,446
Q3	3,640	940	2,700	3,723	1,023	2,701
Q4	3,705	1,028	2,677	3,781	1,076	2,706
2002 Q1	4,141	1,408	2,733	3,979	1,364	2,615
Q2	4,066	1,679	2,387	4,035	1,552	2,483
Q3	3,808	1,390	2,418	3,928	1,502	2,426
Q4	4,291	1,754	2,537	4,364	1,813	2,551
2003 Q1	3,797	1,585	2,212	3,688	1,551	2,137
Q2	3,767	1,470	2,297	3,733	1,379	2,355
Q3	3,314	1,075	2,239	3,413	1,165	2,248
Q4	3,306	1,104	2,202	3,349	1,140	2,210
2004 Q1	3,248	1,208	2,040	3,181	1,194	1,987
Q2	3,108	1,197	1,911	3,059	1,127	1,933
Q3	2,900	1,061	1,839	2,987	1,127	1,860
Q4	2,936	1,118	1,818	2,964	1,136	1,829
2005 Q1	3,010	1,101	1,909	2,959	1,094	1,865
Q2	3,407	1,422	1,985	3,336	1,349	1,987
Q3	3,306	1,454	1,852	3,398	1,522	1,876
Q4	3,170	1,256	1,914	3,200	1,268	1,932
2006 Q1	3,564	1,473	2,091	3,520	1,475	2,044
Q2	3,235	1,263	1,972	3,165	1,201	1,964
Q3	3,172	1,286	1,886	3,250	1,335	1,914
Q4	3,166	1,396	1,770	3,202	1,406	1,796
2007 Q1	3,146	1,384	1,762	3,097	1,382	1,714
Q2	3,087	1,399	1,688	3,051 r	1,341 r	1,710 r
Q3 p	3,082	1,234	1,848	3,106	1,264	1,842
Percentage change, latest qtr on corresponding qtr of previous year						
2007 Q3 p	-2.8	-4.0	-2.0	-4.4	-5.4	-3.8

* including partnerships.

p provisional.

r revised, reflecting update of seasonally adjusted figures.

2. INDIVIDUAL INSOLVENCIES IN ENGLAND AND WALES

Years	Not Seasonally Adjusted			Seasonally Adjusted		
	Total	Bankruptcy Orders	Individual Voluntary Arrangements *	Total	Bankruptcy Orders	Individual Voluntary Arrangements *
1998	24,549	19,647	4,902			
1999	28,806	21,611	7,195			
2000	29,528	21,550	7,978			
2001	29,775	23,477	6,298			
2002	30,587	24,292	6,295			
2003	35,604	28,021	7,583			
2004	46,650	35,898	10,752			
2005	67,584	47,291	20,293			
2006	107,288	62,956	44,332			
1998 Q1	5,953	4,938	1,015	5,680	4,620	1,061
Q2	5,855	4,755	1,100	5,795	4,681	1,114
Q3	6,380	5,113	1,267	6,265	5,059	1,206
Q4	6,361	4,841	1,520	6,809	5,287	1,522
1999 Q1	7,025	5,799	1,226	6,738	5,447	1,291
Q2	7,120	5,527	1,593	7,082	5,458	1,624
Q3	7,592	5,365	2,227	7,451	5,322	2,130
Q4	7,069	4,920	2,149	7,535	5,384	2,150
2000 Q1	7,837	5,667	2,170	7,604	5,332	2,272
Q2	7,532	5,414	2,118	7,464	5,334	2,129
Q3	7,316	5,451	1,865	7,167	5,400	1,767
Q4	6,843	5,018	1,825	7,294	5,484	1,810
2001 Q1	7,750	6,078	1,672	7,499	5,730	1,769
Q2	7,714	6,115	1,599	7,604	6,011	1,593
Q3	7,434	5,817	1,617	7,297	5,762	1,535
Q4	6,877	5,467	1,410	7,376	5,974	1,401
2002 Q1	7,411	6,027	1,384	7,391	5,892	1,500
Q2	7,861	6,269	1,592	7,511	5,938	1,573
Q3	7,892	6,249	1,643	7,754	6,196	1,558
Q4	7,423	5,747	1,676	7,931	6,266	1,664
2003 Q1	8,426	6,912	1,514	8,222	6,529	1,693
Q2	8,889	6,948	1,941	8,675	6,781	1,894
Q3	9,291	7,221	2,070	9,124	7,165	1,960
Q4	8,998	6,940	2,058	9,583	7,547	2,036
2004 Q1	10,665	8,524	2,141	10,473	8,042	2,431
Q2	11,535	9,060	2,475	11,208	8,825	2,383
Q3	12,227	9,315	2,912	12,020	9,275	2,745
Q4	12,223	8,999	3,224	12,950	9,756	3,193
2005 Q1	13,190	10,188	3,002	13,778	10,274	3,504
Q2	16,873	12,338	4,535	15,609	11,232	4,377
Q3	18,010	12,256	5,754	17,703	12,244	5,459
Q4	19,511	12,509	7,002	20,494	13,540	6,953
2006 Q1	23,939	16,283	7,656	24,274	15,310	8,964
Q2	26,722	15,489	11,233	25,869	15,090	10,779
Q3	28,083	15,418	12,665	27,430	15,486	11,944
Q4	28,544	15,766	12,778	29,715	17,070	12,645
2007 Q1	29,236	17,937	11,299	29,338	16,742	12,597
Q2	27,327	16,489	10,838	26,869 r	16,170 r	10,699 r
Q3 p	26,252	15,600	10,652	26,072	15,833	10,239
Percentage change, latest qtr on corresponding qtr of previous year						
2007 Q3 p	-6.5	1.2	-15.9	-5.0	2.2	-14.3

* including Deeds of Arrangement

p provisional.

r revised, reflecting update of seasonally adjusted figures.

**2b. BANKRUPTCY ORDERS IN ENGLAND AND WALES - BY PETITION TYPE AND TRADING STATUS
(not seasonally adjusted)**

Years	Total Bankruptcy Orders	Debtor's petitions	Creditor's petitions	Total Bankruptcy Orders	Self-employed	Other individuals
1998	19,647	10,497	9,150	19,647	10,420	9,227
1999	21,611	12,327	9,284	21,611	10,723	10,888
2000	21,550	13,312	8,238	21,550	9,952	11,598
2001	23,477	15,514	7,963	23,477	9,839	13,638
2002	24,292	16,955	7,337	24,292	8,854	15,438
2003	28,021	19,882	8,139	28,021	9,139	18,882
2004	35,898	27,872	8,026	35,898	9,564	26,334
2005	47,291	38,131	9,160	47,291	10,839	36,452
2006	62,956	53,038	9,918	62,956	10,894	52,062
1998 Q1	4,938	2,771	2,167	4,938	2,637	2,301
Q2	4,755	2,476	2,279	4,755	2,521	2,234
Q3	5,113	2,613	2,500	5,113	2,672	2,441
Q4	4,841	2,637	2,204	4,841	2,590	2,251
1999 Q1	5,799	3,336	2,463	5,799	2,996	2,803
Q2	5,527	3,096	2,431	5,527	2,721	2,806
Q3	5,365	3,102	2,263	5,365	2,614	2,751
Q4	4,920	2,793	2,127	4,920	2,392	2,528
2000 Q1	5,667	3,554	2,113	5,667	2,571	3,096
Q2	5,414	3,276	2,138	5,414	2,519	2,895
Q3	5,451	3,292	2,159	5,451	2,518	2,933
Q4	5,018	3,190	1,828	5,018	2,344	2,674
2001 Q1	6,078	3,987	2,091	6,078	2,666	3,412
Q2	6,115	3,890	2,225	6,115	2,609	3,506
Q3	5,817	3,889	1,928	5,817	2,414	3,403
Q4	5,467	3,748	1,719	5,467	2,150	3,317
2002 Q1	6,027	4,223	1,804	6,027	2,261	3,766
Q2	6,269	4,333	1,936	6,269	2,235	4,034
Q3	6,249	4,374	1,875	6,249	2,244	4,005
Q4	5,747	4,025	1,722	5,747	2,114	3,633
2003 Q1	6,912	4,892	2,020	6,912	2,468	4,444
Q2	6,948	4,851	2,097	6,948	2,267	4,681
Q3	7,221	5,148	2,073	7,221	2,296	4,925
Q4	6,940	4,991	1,949	6,940	2,108	4,832
2004 Q1	8,524	6,472	2,052	8,524	2,437	6,087
Q2	9,060	7,028	2,032	9,060	2,455	6,605
Q3	9,315	7,236	2,079	9,315	2,300	7,015
Q4	8,999	7,136	1,863	8,999	2,372	6,627
2005 Q1	10,188	8,219	1,969	10,188	2,446	7,742
Q2	12,338	9,840	2,498	12,338	2,835	9,503
Q3	12,256	9,902	2,354	12,256	2,850	9,406
Q4	12,509	10,170	2,339	12,509	2,708	9,801
2006 Q1	16,283	13,492	2,791	16,283	3,150	13,133
Q2	15,489	13,086	2,403	15,489	2,898	12,591
Q3	15,418	13,036	2,382	15,418	2,990	12,428
Q4	15,766	13,424	2,342	15,766	1,856 *	13,910 *
2007 Q1	17,937	15,356	2,581	17,937	1,981 *	15,956 *
Q2	16,489	13,923	2,566	16,489	1,767 *	14,722 *
Q3 p	15,600	13,173	2,427	15,600

p provisional.

* Changes have been made to the part of the database used to capture information on trading status and industry codes. From 2006 Q4, "self-employed" includes the categories "self-employed"; "trader but failure not as a result of trading" and "trading partnership" and "other individuals" includes "non-trading"; "non-surrender" and "unknown". The breakdown by trading status from Q4 2006 should not therefore be considered to be entirely consistent with that for the earlier period.

.. not yet available

2c. INCOME PAYMENTS IN ENGLAND AND WALES *

Years	Total	Income Payments Orders **	Income Payments Agreements
1998	.. r	.. r	:
1999	2,451 r	2,451 r	:
2000	2,346 r	2,346 r	:
2001	2,396 r	2,396 r	:
2002	2,322 r	2,322 r	:
2003	2,720 r	2,720 r	92
2004	6,238 r	1,238 r	5,000
2005	9,102	69	9,033
2006	11,990	86	11,904
1998 Q1	.. r	.. r	:
Q2	506 r	506 r	:
Q3	648 r	648 r	:
Q4	621 r	621 r	:
1999 Q1	522 r	522 r	:
Q2	543 r	543 r	:
Q3	690 r	690 r	:
Q4	696 r	696 r	:
2000 Q1	486 r	486 r	:
Q2	540 r	540 r	:
Q3	652 r	652 r	:
Q4	668 r	668 r	:
2001 Q1	565 r	565 r	:
Q2	458 r	458 r	:
Q3	710 r	710 r	:
Q4	663 r	663 r	:
2002 Q1	565 r	565 r	:
Q2	458 r	458 r	:
Q3	630 r	630 r	:
Q4	669 r	669 r	:
2003 Q1	464 r	462 r	2
Q2	444 r	432 r	12
Q3	917 r	885 r	32
Q4	987 r	941 r	46
2004 Q1	783 r	709 r	74
Q2	1,257	413	844
Q3	2,140	90	2,050
Q4	2,058	26	2,032
2005 Q1	1,430	25	1,405
Q2	1,882	11	1,871
Q3	2,900	12	2,888
Q4	2,890	21	2,869
2006 Q1	1,973	29	1,944
Q2	2,532	21	2,511
Q3	3,798	20	3,778
Q4	3,687	16	3,671
2007 Q1	2,483	23	2,460
Q2	2,870 r	26 r	2,844 r
Q3 p	4,110	11	4,099

p provisional

r revised

: not applicable

.. not available

* See "Notes to Editors" paragraph 10.

** Revised between 1998 Q2 and 2004 Q1 in line with figures published in The Insolvency Service Annual Reports.

**3. RECEIVERSHIPS, ADMINISTRATIONS AND COMPANY
VOLUNTARY ARRANGEMENTS IN ENGLAND AND WALES
REGISTERED AT COMPANIES HOUSE (not seasonally adjusted)**

Year	Receivership Appointments	Administrator Appointments*	In Administration (Enterprise Act 2002)*	Company Voluntary Arrangements	
1998	1,713	338	:	470	
1999	1,618	440	:	475	
2000	1,595	438	:	557	
2001	1,914	698	:	597	
2002	1,541	643	:	651	
2003	1,261	497	247	726	
2004	864	1	1,601	597	
2005	590	4	2,257	604	
2006	588	0	3,560	534	
1998	Q1	516	85	:	54
	Q2	395	46	:	127
	Q3	443	105	:	153
	Q4	359	102	:	136
1999	Q1	419	193	:	106
	Q2	397	81	:	128
	Q3	375	64	:	120
	Q4	427	102	:	121
2000	Q1	454	89	:	124
	Q2	429	135	:	160
	Q3	355	101	:	121
	Q4	357	113	:	152
2001	Q1	649	125	:	132
	Q2	435	141	:	163
	Q3	369	146	:	141
	Q4	461	286	:	161
2002	Q1	455	176	:	151
	Q2	346	151	:	151
	Q3	377	162	:	181
	Q4	363	154	:	168
2003	Q1	315	160	:	178
	Q2	298	167	:	165
	Q3	334	154	14	171
	Q4	314	16	233	212
2004	Q1	224	1	331	176
	Q2	199	0	392	154
	Q3	203	0	421	137
	Q4	238	0	457	130
2005	Q1	114	0	489	179
	Q2	167	4	568	183
	Q3	170	0	620	130
	Q4	139	0	580	112
2006	Q1	180	0	753	124
	Q2	153	0	653	147
	Q3	93	0	675	157
	Q4	162	0	1,479	106
2007	Q1	111	0	699	100
	Q2	129	0	565	99
	Q3 p	90	2	506	109

p provisional
: not applicable

* See paragraph 7 of the Press Release "Notes to Editors" for changes wef 15 September 2003 under the Enterprise Act 2002

4. COMPANY LIQUIDATIONS* IN ENGLAND AND WALES - INDUSTRIAL ANALYSIS

NOT SEASONALLY ADJUSTED

INDUSTRY

AGRICULTURE AND HORTICULTURE

MANUFACTURING

Food, drink and tobacco
Chemicals
Metals and engineering
Textiles and clothing
Timber and furniture
Paper, printing and publishing
Other

TOTAL

CONSTRUCTION AND TRANSPORT

Construction
Transport and Communication

TOTAL

WHOLESALE

Food, drink and tobacco
Motor vehicles
Other

TOTAL

RETAILING

Food, drink and tobacco
Motor vehicles and filling stations
Other

TOTAL

SERVICES

Insurance
Other financial & business services
Hotels and Catering

TOTAL

OTHERS

TOTAL

Company Liquidations by industry are currently under development to adhere to the Standard Industrial Classification 2003 (SIC 2003). Data according to this breakdown are not yet available. The breakdown according to the previously used Insolvency Trade Classification (ITC) is available up to 2006 Quarter 3 and can be found at <http://www.insolvency.gov.uk/otherinformation/statistics/200702/table4.htm>.

* including partnerships.

5. BANKRUPTCIES IN ENGLAND AND WALES - INDUSTRIAL ANALYSIS

NOT SEASONALLY ADJUSTED

INDUSTRY

SELF EMPLOYED

AGRICULTURE AND HORTICULTURE

MANUFACTURING

Food, drink and tobacco
Chemicals
Metals and engineering
Textiles and clothing
Timber and furniture
Paper, printing and publishing
Other

TOTAL

CONSTRUCTION AND TRANSPORT

Construction
Transport and communication

TOTAL

WHOLESALE

Food, drink and tobacco
Motor vehicles
Other

TOTAL

RETAILING

Food, drink and tobacco
Motor vehicles and filling stations
Other

TOTAL

SERVICES

Insurance
Other financial & business services
Hotels and catering

TOTAL

OTHER

TOTAL SELF-EMPLOYED

OTHER INDIVIDUALS

Employees
No occupation and unemployed
Directors & promoters of companies
Occupation unknown

TOTAL OTHER INDIVIDUALS

TOTAL BANKRUPTCIES

Bankruptcies by industry are currently under development to adhere to the Standard Industrial Classification 2003 (SIC 2003). Data according to this breakdown are not yet available. The breakdown according to the previously used Insolvency Trade Classification (ITC) is available up to 2006 Quarter 3 and can be found at <http://www.insolvency.gov.uk/otherinformation/statistics/200702/table5.htm>.

However, bankruptcy orders split into self-employed and other individuals may be seen under Table 2b, up to and including Quarter 2 2007.

6. INSOLVENCIES IN SCOTLAND (not seasonally adjusted)

Years	Individuals			Companies		
	Total	Sequestrations	Protected Trust Deeds	Total	Compulsory Liquidations	Creditors' Voluntary Liquidations
1998	4,465	3,016	1,449	566	338	228
1999	5,339	3,195	2,144	572	364	208
2000	5,766	2,965	2,801	583	344	239
2001	6,827	3,048	3,779	602	378	224
2002	8,389	3,215	5,174	788	556	232
2003	8,780	3,328	5,452	631	436	195
2004	9,321	3,297	6,024	621	431	190
2005	11,846	4,965	6,881	569	420	149
2006	13,638	5,430	8,208	549	416	133
1998 Q1	1,016	702	314	150	79	71
Q2	1,171	756	415	151	93	58
Q3	1,172	830	342	124	82	42
Q4	1,106	728	378	141	84	57
1999 Q1	1,213	776	437	153	83	70
Q2	1,311	807	504	136	89	47
Q3	1,451	842	609	144	98	46
Q4	1,364	770	594	139	94	45
2000 Q1	1,395	751	644	136	75	61
Q2	1,527	751	776	153	92	61
Q3	1,391	712	679	139	85	54
Q4	1,453	751	702	155	92	63
2001 Q1	1,503	709	794	166	102	64
Q2	1,746	750	996	141	82	59
Q3	1,881	839	1,042	108	75	33
Q4	1,697	750	947	187	119	68
2002 Q1	1,858	832	1,026	240	170	70
Q2	2,136	797	1,339	175	123	52
Q3	2,247	834	1,413	184	139	45
Q4	2,148	752	1,396	189	124	65
2003 Q1	2,015	799	1,216	183	133	50
Q2	2,189	858	1,331	168	118	50
Q3	2,367	845	1,522	154	109	45
Q4	2,209	826	1,383	126	76	50
2004 Q1	2,154	720	1,434	153	95	58
Q2	2,160	851	1,309	147	110	37
Q3	2,441	923	1,518	168	113	55
Q4	2,566	803	1,763	153	113	40
2005 Q1	2,462	908	1,554	140	103	37
Q2	2,830	1,307	1,523	159	120	39
Q3	3,593	1,461	2,132	151	115	36
Q4	2,961	1,289	1,672	119	82	37
2006 Q1	3,111	1,241	1,870	128	96	32
Q2	3,544	1,305	2,239	133	99	34
Q3	3,601	1,528	2,073	156	132	24
Q4	3,382	1,356	2,026	132	89	43
2007 Q1	3,471	1,505	1,966	166	132	34
Q2	3,498	1,606	1,892	165	131	34
Q3 p	3,527	1,545	1,982	125	105	20
Percentage change, latest qtr on corresponding qtr of previous year						
2007 Q3 p	-2.1	1.1	-4.4	-19.9	-20.5	-16.7

p provisional

6b. COMPANY LIQUIDATIONS IN SCOTLAND - STANDARD INDUSTRIAL CLASSIFICATION (SIC 2003) ANALYSIS

NOT SEASONALLY ADJUSTED

SIC(03)				2007 *			
Section	Sub section	2 digit	3 digit	Description	Q1	Q2	Q3 p
Section A				<i>AGRICULTURE, HUNTING AND FORESTRY</i>	<i>1</i>	<i>0</i>	<i>3</i>
Section B				<i>FISHING</i>	<i>0</i>	<i>0</i>	<i>0</i>
Section C				<i>MINING AND QUARRYING</i>	<i>0</i>	<i>0</i>	<i>0</i>
Section D				<i>MANUFACTURING</i>			
	DA			Food products, beverages and tobacco	0	1	0
	DB			Textiles and textile products	4	1	1
	DC			Leather and leather products	0	0	0
	DD			Wood and wood products	0	1	1
	DE			Pulp, paper and paper products publishing and printing	0	5	2
	DF			Coke, refined petroleum products and nuclear fuel	0	0	0
	DG			Chemicals, chemical products and man-made fibres	0	0	0
	DH			Rubber and plastic products	0	0	0
	DI			Other non-metallic mineral products	1	0	0
	DJ			Basic metals and fabricated metal products	3	4	2
	DK			Machinery and equipment not elsewhere classified	1	0	2
	DL			Electrical and optical equipment	1	1	0
	DM			Transport equipment	0	1	1
	DN			Not elsewhere classified	2	4	1
				<i>TOTAL</i>	<i>12</i>	<i>18</i>	<i>10</i>
Section E				<i>ELECTRICITY, GAS AND WATER SUPPLY</i>	<i>0</i>	<i>1</i>	<i>0</i>
Section F		45		<i>CONSTRUCTION</i>			
			451	Site preparation	0	0	1
			452	Building of complete constructions or parts thereof; civil engineering	14	9	10
			453	Building installation	2	9	6
			454	Building completion	5	4	3
			455	Renting of construction or demolition equipment with operator	2	0	0
				<i>TOTAL</i>	<i>23</i>	<i>22</i>	<i>20</i>
Section G				<i>WHOLESALE AND RETAIL TRADE; REPAIR OF MOTOR VEHICLES, MOTOR CYCLES AND PERSONAL AND HOUSEHOLD GOODS</i>			
			50	Sale, maintenance and repair of motor vehicles and motorcycles; retail sale of automotive fuel	4	1	3
			51	Wholesale trade and commission trade, except of motor vehicles and motorcycles	2	5	7
			52	Retail trade, except of motor vehicles and motorcycles; repair of personal and household goods	8	13	11
				<i>TOTAL</i>	<i>14</i>	<i>19</i>	<i>21</i>

Section H	55	<i>HOTELS AND RESTAURANTS</i>			
	551	Hotels	1	2	2
	553	Restaurants	9	4	2
	554	Bars	10	6	2
		Other	5	2	1
		TOTAL	25	14	7
Section I		<i>TRANSPORT, STORAGE AND COMMUNICATION</i>			
	60	Land transport; transport via pipelines	1	7	2
	61	Water transport	0	2	0
	62	Air transport	0	1	0
	63	Supporting and auxiliary transport activities; activities of travel agencies	1	1	1
	64	Post and telecommunications	0	0	0
		TOTAL	2	11	3
Section J		<i>FINANCIAL INTERMEDIATION</i>			
	66	Insurance and pension funding, except compulsory social security	1	0	0
		Other	0	0	1
		TOTAL	1	0	1
Section K		<i>REAL ESTATE, RENTING AND BUSINESS ACTIVITIES</i>			
	70	Real estate activities	6	8	7
	71	Renting of machinery and equipment without operator and of personal and household goods	2	1	0
	72	Computer and related activities	10	4	3
	73	Research and development	1	0	0
	74	Other business activities	52	58	37
		TOTAL	71	71	47
Section L		<i>PUBLIC ADMINISTRATION AND DEFENCE; COMPULSORY SOCIAL SECURITY</i>	1	0	0
Section M		<i>EDUCATION</i>	1	2	1
Section N		<i>HEALTH AND SOCIAL WORK</i>	0	1	0
Section O		<i>OTHER COMMUNITY, SOCIAL & PERSONAL SERVICE ACTIVITIES</i>	8	4	9
		ALL OTHERS	7	2	3
		TOTAL	166	165	125

* Prior to Q1 2007, company liquidations in Scotland were classified according to the Insolvency Trade Classifications (ITC); these breakdowns are available at <http://www.insolvency.gov.uk/otherinformation/statistics/200702/table7.htm> from Q1 1998 to Q4 2006.
p provisional

**7. RECEIVERSHIPS, ADMINISTRATIONS AND COMPANY
VOLUNTARY ARRANGEMENTS IN SCOTLAND REGISTERED AT
COMPANIES HOUSE (SCOTLAND) (not seasonally adjusted)**

Year	Receivership Appointments	Administrator Appointments*	In Administration (Enterprise Act 2002)*	Company Voluntary Arrangements	
1998	83	3	:	2	
1999	69	3	:	0	
2000	108	6	:	2	
2001	97	4	:	3	
2002	118	12	:	2	
2003	118	6	3	7	
2004	82	0	31	6	
2005	56	0	55	8	
2006	34	0	86	5	
1998	Q1	16	2	:	0
	Q2	17	1	:	2
	Q3	19	0	:	0
	Q4	31	0	:	0
1999	Q1	22	3	:	0
	Q2	21	0	:	0
	Q3	17	0	:	0
	Q4	9	0	:	0
2000	Q1	24	2	:	1
	Q2	35	1	:	0
	Q3	30	0	:	1
	Q4	19	3	:	0
2001	Q1	26	2	:	1
	Q2	27	1	:	1
	Q3	19	1	:	1
	Q4	25	0	:	0
2002	Q1	26	5	:	0
	Q2	26	3	:	1
	Q3	29	3	:	1
	Q4	37	1	:	0
2003	Q1	41	4	:	0
	Q2	21	1	:	3
	Q3	36	1	1	1
	Q4	20	0	2	3
2004	Q1	30	0	9	1
	Q2	23	0	11	4
	Q3	13	0	7	0
	Q4	16	0	4	1
2005	Q1	27	0	8	1
	Q2	9	0	7	4
	Q3	12	0	19	2
	Q4	8	0	21	1
2006	Q1	11	0	28	2
	Q2	16	0	20	1
	Q3	3	0	18	1
	Q4	4	0	20	1
2007	Q1	9	0	15	2
	Q2	22	0	11	1
	Q3 p	8	0	6	2

p provisional
: not applicable

* See paragraph 7 of the Press Release "Notes to Editors" for changes wef 15 September 2003 under the Enterprise Act 2002

8. INSOLVENCIES IN NORTHERN IRELAND (not seasonally adjusted)

Years	Individuals			Companies		
	Total	Bankruptcy Orders	Individual Voluntary Arrangements	Total	Compulsory Liquidations	Creditors' Voluntary Liquidations
1998	517	394	123	..	63	..
1999	573	401	172	..	58	..
2000	616	349	267	..	83	..
2001	468	292	176	..	60	..
2002	541	334	207	102	49	53
2003	835	517	318	142	95	47
2004	1,115	666	449	121	76	45
2005	1,454	821	633	138	85	53
2006	1,810	1,036	774	128	78	50
1998 Q1	130	99	31	..	17	..
Q2	150	118	32	..	22	..
Q3	108	82	26	..	12	..
Q4	129	95	34	..	12	..
1999 Q1	147	110	37	..	16	..
Q2	131	100	31	..	14	..
Q3	108	68	40	..	14	..
Q4	187	123	64	..	14	..
2000 Q1	202	104	98	..	22	..
Q2	171	116	55	..	27	..
Q3	110	54	56	..	15	..
Q4	133	75	58	..	19	..
2001 Q1	137	86	51	..	16	..
Q2	137	88	49	..	18	..
Q3	79	37	42	..	11	..
Q4	115	81	34	..	15	..
2002 Q1	121	74	47	24	12	12
Q2	143	85	58	19	5	14
Q3	121	74	47	33	17	16
Q4	156	101	55	26	15	11
2003 Q1	146	90	56	37	30	7
Q2	219	141	78	42	25	17
Q3	205	109	96	29	19	10
Q4	265	177	88	34	21	13
2004 Q1	253	155	98	35	19	16
Q2	282	173	109	39	27	12
Q3	286	165	121	28	20	8
Q4	294	173	121	19	10	9
2005 Q1	302	174	128	29	15	14
Q2	438	241	197	47	28	19
Q3	320	193	127	31	19	12
Q4	394	213	181	31	23	8
2006 Q1	408	245	163	29	19	10
Q2	495	286	209	41	24	17
Q3	425	241	184	28	15	13
Q4	482	264	218	30	20	10
2007 Q1	343	218	125	36	29	7
Q2	338	228	110	38	29	9
Q3 p	337	226	111	42	28	14
Percentage change, latest qtr on corresponding qtr of previous year						
2007 Q3 p	-20.7	-6.2	-39.7	50.0	86.7	7.7

p provisional
.. not available

9. ANNUAL RATE OF COMPANY LIQUIDATIONS (for latest 12 months) - COMPANY LIQUIDATIONS AS A PERCENTAGE OF THE NUMBER OF COMPANIES REGISTERED

Years	England & Wales		Scotland		
	% of Active Register	% of Total Register	% of Active Register	% of Total Register	
1998	Q1	1.2	1.0	0.8	0.7
	Q2	1.2	1.0	0.8	0.7
	Q3	1.2	1.0	0.8	0.7
	Q4	1.2	1.0	0.9	0.8
1999	Q1	1.2	1.1	0.8	0.8
	Q2	1.2	1.1	0.8	0.7
	Q3	1.2	1.1	0.8	0.8
	Q4	1.2	1.0	0.8	0.7
2000	Q1	1.1	1.0	0.8	0.7
	Q2	1.1	1.0	0.8	0.7
	Q3	1.1	1.0	0.8	0.7
	Q4	1.1	1.0	0.8	0.7
2001	Q1	1.1	1.0	0.8	0.7
	Q2	1.1	1.0	0.8	0.7
	Q3	1.1	1.0	0.7	0.7
	Q4	1.1	1.0	0.8	0.7
2002	Q1	1.1	1.0	0.9	0.8
	Q2	1.1	1.0	0.9	0.8
	Q3	1.1	1.0	1.0	0.9
	Q4	1.1	1.0	1.0	0.9
2003	Q1	1.1	1.0	0.9	0.8
	Q2	1.0	0.9	0.8	0.8
	Q3	1.0	0.9	0.8	0.7
	Q4	0.9	0.8	0.7	0.6
2004	Q1	0.8	0.8	0.6	0.6
	Q2	0.8	0.7	0.6	0.5
	Q3	0.7	0.7	0.6	0.5
	Q4	0.7	0.6	0.6	0.6
2005	Q1	0.7	0.6	0.6	0.5
	Q2	0.7	0.6	0.6	0.5
	Q3	0.7	0.6	0.6	0.5
	Q4	0.7	0.6	0.5	0.5
2006	Q1	0.7	0.6	0.5	0.5
	Q2	0.7	0.6	0.5	0.4
	Q3	0.7	0.6	0.5	0.4
	Q4	0.6	0.6	0.5	0.4
2007	Q1	0.6	0.6	0.5	0.5
	Q2	0.6	0.5	0.5	0.5
	Q3 p	0.6	0.5	0.5	0.4

p provisional

Notes:

1. The total register includes companies being wound up or dormant.
2. Calculated from company liquidations in the latest twelve month period divided by the average number of companies in that period.