

Forecasts for the UK Economy

A comparison of independent forecasts

Compiled by the Macroeconomic Prospects Team

March 2006

www.hm-treasury.gov.uk/forecasts



HM TREASURY

No.227

CONTENTS

Page 3	: Summary Page
Page 4	: Table 1 - 2006: Growth in GDP and its components (% change)
Page 5	: Table 2 - 2006: Growth in prices and monetary indicators (% change)
Page 6	: Table 3 - 2006: Growth in other selected variables (% change)
Page 7	: Table 4 - 2007: Growth in GDP and its components (% change)
Page 8	: Table 5 - 2007: Growth in prices and monetary indicators (% change)
Page 9	: Table 6 - 2007: Growth in other selected variables (% change)
Page 10	: Average of independent forecasts for 2006; GDP growth, CPI & RPIX Inflation and Claimant Unemployment
Page 11	: Average of independent forecasts for 2006; Current account and PSNB (2006-07, £billion)
Page 12	: Average of independent forecasts for 2007; GDP growth, CPI & RPIX Inflation and Claimant Unemployment
Page 13	: Average of independent forecasts for 2007; Current account and PSNB (2007-08, £billion)
Page 14	: Range of Forecasts for 2006; GDP, CPI and Claimant Unemployment (millions) made in last 3 months
Page 15	: Range of Forecasts for 2006; Current Account (£bn) and PSNB (2006-07, £bn) made in last 3 months
Page 16	: Range of Forecasts for 2007; GDP, CPI and Claimant Unemployment (millions) made in last 3 months
Page 17	: Range of Forecasts for 2007; Current Account (£bn) and PSNB (2007-08, £bn) made in last 3 months
Page 18	: ANNEX 1: Forecasting institutions referred to in charts and tables
Page 19	: ANNEX 2: Data Definitions
Page 20	: ANNEX 3: Notation used in tables
Page 21	: ANNEX 4: Organisation Contact Details

Please note that Forecasts for the UK Economy is a summary of published material reflecting the views of the forecasting organisations themselves and does not in any way provide new information on the Treasury's own views. It contains only a selection of forecasters, which is subject to review. No significance should be attached to the inclusion or exclusion of any particular forecasting organisation. HM Treasury accepts no responsibility for the accuracy of material published in this comparison.

The averages and ranges in this document may be reproduced free of charge in any format or medium providing that it is reproduced accurately and not used in a misleading context. The data remain the copyright of those organisations providing it - permission to reproduce it must be sought from both HM Treasury and the providers of the original data.

Users should note that the Treasury crest (which incorporates the Royal Coat of Arms) may not be used or reproduced for any purpose without specific permission. Permission to use or reproduce the Treasury crest should be sought from HM Treasury.

Payment of the subscription fee is £75. Cheques should be made payable to "HM Treasury votes cash Account", and should be sent to Tessa Caruth, Public Enquiry Unit, 2/S2, HM Treasury, 1 Horse Guards Road, London, SW1A 2HQ. Could fee paying subscribers direct enquiries to Tessa Caruth on 020 7270 4858. Free subscribers should contact Robin Duffy on 020 7270 5404. "Forecasts for the UK Economy" is compiled and coordinated by Robin Duffy. Please direct enquiries on the contents of this issue to Robin Duffy (020 7270 5404, robin.duffy@hm-treasury.x.gsi.gov.uk).

The next edition will be published on 19th April 2006. It will also be available on the Treasury's Internet site: <http://www.hm-treasury.gov.uk> under 'Economic Data and Tools'.

FORECASTS FOR THE UK ECONOMY
A comparison of independent forecasts, March 2006

This edition of the comparison contains 23 new forecasts, all of which were received between the 28th of February and the 9th of March. The tables below summarise the average and range of independent forecasts for 2006 and 2007 and show the average of this month's new forecasts.

Forecasts for 2006	Independent ⁺				Average of new* forecasts
	Averages		March		
	March	February	Lowest	Highest	
GDP growth (per cent)	2.2	2.1	1.4	2.8	2.2
Inflation rate (Q4: per cent)					
- CPI	1.9	1.9	1.4	2.4	1.9
- RPI	2.3	2.2	1.4	3.5	2.3
Claimant unemployment (Q4: mn)	0.97	0.99	0.83	1.10	0.96
Current account (£bn)	-28.4	-27.5	-45.7	-18.7	-27.9
PSNB (2006-07: £bn)	38.2	38.2	33.3	46.8	38.3

Forecasts for 2007	Independent ⁺				Average of new* forecasts
	Averages		March		
	March	February	Lowest	Highest	
GDP growth (per cent)	2.4	2.5	0.1	2.9	2.3
Inflation rate (Q4: per cent)					
- CPI	2.0	1.9	1.6	2.8	1.9
- RPI	2.5	2.5	1.7	3.6	2.4
Claimant unemployment (Q4: mn)	0.98	0.98	0.80	1.40	0.98
Current account (£bn)	-29.3	-29.5	-45.2	-15.0	-28.4
PSNB (2007-08: £bn)	37.4	37.4	28.7	55.6	36.6

+ Independent and City averages, and the range of forecasts, are based on forecasts made in the last three months (March: 23 institutions, February: 6 institutions, January: 7 institutions)

*Calculated from new forecasts received for the comparison this month

Note: All the averages exclude non-standard entries (see footnotes a to ss)

Table 1 - 2006: Growth in GDP and its components (% change)

March 2006 Comparison

Forecasters & dates of forecasts		GDP	Private Consumption	Government Consumption	Fixed Investment	Change in Inventories (£bn)	Domestic Demand	Total Exports	Total Imports	Net Trade Contribution
City Forecasters										
ABN AMRO	Jan	2.2	1.5	2.4	3.2 f	-	-	6.9	6.0	-
Bank of America	Mar *	2.0	1.8	2.1	2.3	2.1	2.0	4.2	3.5	0.0
Barclays Capital	Mar *	2.7	2.5	2.0	5.8	2.0	2.8	5.6	5.4	-0.2
BNP Paribas	Feb	2.3	2.3	2.3	2.8	0.3	2.1	5.2	4.3	0.1
Bridgewell	Mar *	2.6	2.8	2.6	2.8	2.3	2.7	5.6	5.6	-0.2
Capital Economics	Mar *	2.0	2.0	2.0	3.0	0.0	2.0	4.0	3.5	0.0
Citigroup	Jan	2.5	2.4	2.1	6.2	0.8	2.8	4.6	5.4	-0.4
Credit Suisse First Boston	Jan	2.3	2.5	2.2	4.5	1.6	2.6	5.8	6.3	-0.4
Daiwa Institute of Research	Mar *	2.0	1.7	2.1	3.1	3.3	2.1	5.7	5.5	-
Daiwa Securities SMBC	Feb	1.7	1.7	1.6	3.6	-0.4	1.8	5.2	5.0	-0.1
Deutsche Bank	Jan	2.0	1.8	2.0	3.3	5.3	2.0	4.6	5.0	-0.3
Dresdner Kleinwort Wasserstein	Dec	1.7	1.6	2.0	2.5	-	1.9	4.0	4.3	-0.1
Economic Perspectives	Mar *	1.4	1.1	3.1	-0.6	0.4	1.0	2.9	1.6	0.3
Fortis Bank	Dec	2.5	2.1	2.0	5.2	-	2.4	8.1	6.8	0.2
Goldman Sachs	Mar *	2.5	2.1	2.6	2.8	-0.1 h	2.3	5.9	4.8	0.1
Hermes	Mar *	1.8	1.8	2.5	2.1	-0.5	1.8	4.6	4.2	0.0
HSBC	Dec	1.8	1.1	2.6	2.4	0.7	1.4	3.5	2.4	0.2
ING Financial Markets	Mar *	2.0	1.7	2.3	2.0	0.7	2.0	5.6	5.2	-0.1
J P Morgan	Mar *	2.2	2.3	3.1	3.2	-2.7	2.2	5.6	4.9	0.0
Lehman Brothers	Mar *	1.8	1.8	1.9	1.6	2.7	1.8	4.4	3.9	0.0
Lombard Street	Mar *	2.6	2.2	2.2	3.7	2.5	2.3	6.4	5.0	0.2
MacroEcon.com	Mar *	2.2	2.5	2.7	3.4	3.0	-	5.2	5.8	-
Morgan Stanley	Mar *	2.3	1.9	1.9	3.2	-0.3	2.2	4.9	4.5	0.0
RBS Financial Markets	Mar *	2.3	2.4	2.8	2.8	2.0	2.5	3.9	4.3	-0.2
Schroders Investment Management	Jan	1.7	1.6	1.9	2.3	-	1.8	4.9	4.8	-0.1
Standard Chartered Bank	Mar *	2.1	1.7	2.5	4.6	2.5	2.2	3.7	3.9	-0.2
UBS	Feb	2.3	2.1	2.2	3.7	0.1	2.5	4.8	5.0	-0.3
WestLB AG	Mar *	1.9	1.8	1.3	2.3	4.0	1.8	4.3	4.0	-0.1
Williams de Broe	Feb	2.8	2.2	2.0	5.7	3.4	2.7	6.0	5.4	0.0
Non-City Forecasters										
Cambridge Econometrics	Dec	2.0	1.8	2.8	2.7	1.3	2.2	3.9	4.1	-0.2
CBI	Nov	2.2	2.0	2.9	3.9	3.9	2.5	4.1	4.7	-0.3
CEBR	Mar *	2.5	2.3	2.1	2.3	4.7	2.3	4.3	3.1	-
Experian Business Strategies	Mar *	2.3	2.2	1.7	2.3	2.3	1.9	5.8	4.1	0.3
EIU	Jan	1.8	1.7	1.7	2.4	-	1.7	4.6	3.9	0.1
Global Insight	Mar *	2.2	2.1	2.8	3.3	-	2.1	5.5	4.7	0.1
ITEM Club	Feb	2.3	2.0	2.3	5.1	0.0	2.6	6.5	6.5	-0.2
Liverpool Macro Research	Feb	1.7	1.2 c	4.6 d	1.0 e	-	-	-	-	-
Moody's Economy.com	Mar *	2.4	3.0	2.7	2.2	6.3	2.8	4.0	5.3	-
NIESR	Jan	2.3	2.0	2.3	3.9	4.4 r	2.4	4.7	4.8	-0.2
OEF	Mar *	2.2	2.2	2.9	2.6	1.9	2.4	5.3	5.6	-0.3
EC	Nov	2.4	1.8	1.8	3.9	2.3	2.1	5.1	3.9	0.2 h
OECD	Oct	2.4	1.8	2.0	5.4	0.1 h	2.5	7.7	7.4	-0.2
IMF	Mar *	2.5	2.4	1.6	3.8	-0.1 h	2.4	5.5	4.8	0.0
Average of Forecasts made in the last 3 months										
Independent		2.2	2.1	2.2	3.2	1.8	2.2	5.0	4.7	-0.1
New (marked *)		2.2	2.1	2.3	2.8	2.0	2.2	4.9	4.5	0.0
City		2.2	2.0	2.2	3.2	1.5	2.2	5.0	4.7	-0.1
Range of Forecasts made in the last 3 months										
Highest		2.8	3.0	3.1	6.2	6.3	2.8	6.9	6.5	0.3
Lowest		1.4	1.1	1.3	-0.6	-2.7	1.0	2.9	1.6	-0.4
Median		2.2	2.1	2.2	3.1	2.0	2.2	5.2	4.8	-0.1
HM Treasury	Dec	2 to 2½	1½ to 2¼	2	3½ to 4¼	2.4 to 3.4	2 to 2½	5 to 5½	4½ to 5	0

Table 2 - 2006: Growth in prices and monetary indicators (% change)

March 2006 Comparison

Forecasters & dates of forecasts		CPI (Q4)	RPI (Q4)	RPIX (Q4)	Average Earnings	Sterling Index (Q4)	Bank of England Repo Rate (Q4,%)	Oil price (\$)	M4
City Forecasters									
ABN AMRO	Jan	1.9	-	1.9	4.5 gg	-	4.50	-	-
Bank of America	Mar *	1.5	-	1.8	4.3	-	4.00	56.0	-
Barclays Capital	Mar *	2.0	2.8	2.4	4.9	97.5	4.75	-	-
BNP Paribas	Feb	2.0	3.3	2.9	4.4	-	4.75	-	-
Bridgewell	Mar *	2.3	3.5	2.9	4.0	99.9	5.00	-	12.2
Capital Economics	Mar *	1.4	1.5	1.7	4.4	91.7	4.00	50.0	8.0
Citigroup	Jan	1.7	2.1	2.1	4.3	98.7	4.00	56.8	-
Credit Suisse First Boston	Jan	1.8	2.1	1.8	-	-	4.50	-	-
Daiwa Institute of Research	Mar *	2.1	2.5	2.5	4.6	99.4	4.25	62.4	-
Daiwa Securities SMBC	Feb	1.8	2.0	1.8	3.8	-	4.00	56.0	-
Deutsche Bank	Jan	1.6	2.0	2.0	4.2	97.2	4.00	60.0	6.4
Dresdner Kleinwort Wasserstein	Dec	1.8	2.1	2.3	4.3	-	4.25	55.0	-
Economic Perspectives	Mar *	2.2	2.2	2.2	3.8	95.0	4.00	55.0	10.0
Fortis Bank	Dec	1.8	-	-	4.2	-	4.50	60.0	-
Goldman Sachs	Mar *	2.2	-	2.3	4.6	97.0 j	4.90 js	60.0	8.4 j
Hermes	Mar *	1.8	2.3	2.3	4.2	98.0	4.00	-	-
HSBC	Dec	1.9	1.5	1.8	4.0	94.2	4.00	-	-
ING Financial Markets	Mar *	1.4	1.7	1.7	4.0	-	4.00	58.0	-
J P Morgan	Mar *	1.6	-	-	-	-	4.50	-	-
Lehman Brothers	Mar *	1.8	1.9	2.0	4.1	92.0	3.75	-	-
Lombard Street	Mar *	2.1	2.4	2.3	4.3	102.2	4.75	50.0	7.9
MacroEcon.com	Mar *	2.4	2.9	2.7	4.5	-	4.60	50.0	3.4
Morgan Stanley	Mar *	2.0	2.4	2.2	4.0	95.1 j	4.75	61.2	-
RBS Financial Markets	Mar *	2.1	2.4	2.3	4.0	97.8	4.50	57.4	-
Schroders Investment Management	Jan	1.8	1.8	1.6	4.0	-	3.75	50.5	-
Standard Chartered Bank	Mar *	1.5	-	-	4.0	-	4.00	60.0	-
UBS	Feb	1.7	2.0	2.1	3.8	-	4.50	-	-
WestLB AG	Mar *	1.7	2.4	2.0	4.0	-	4.00	65.0	10.0
Williams de Broe	Feb	1.9	2.5	2.5	4.4	97.7 r	4.70	62.5	10.9
Non-City Forecasters									
Cambridge Econometrics	Dec	2.0 k	2.5 k	2.1 k	4.2 n	104.9 k	4.30 ks	65.0	-
CBI	Nov	1.9	2.2	2.1	4.4	99.3 r	4.25	55.5 ii	-
CEBR	Mar *	1.6	1.4	1.4	3.4	-	4.50	59.7	-
Experian Business Strategies	Mar *	2.4	2.6	2.7	4.0	96.4	4.25	51.5	-
EIU	Jan	1.9	-	-	3.9	97.4	4.25	55.0	-
Global Insight	Mar *	1.8	1.8	2.0	4.3	-	4.25	59.3	9.3
ITEM Club	Feb	2.1	2.7	2.5	5.1	97.0	4.50	60.0	7.5
Liverpool Macro Research	Feb	-	-	1.9	3.8	103.4	4.00	-	-
Moody's Economy.com	Mar *	1.7	3.1	3.2	-	-	4.75	58.0	8.1
NIESR	Jan	2.2	2.8 k	2.6 k	4.5 r	100.6	4.50 s	61.1 v	-
OEF	Mar *	2.0	2.5	2.3	4.5	102.2	4.25	62.4	11.1
EC	Nov	2.0	2.6	-	4.5 gg	-	-	61.4	-
OECD	Oct	2.1 k	-	-	-	-	4.50 s	-	-
IMF	Mar *	1.9 k	-	-	-	-	-	-	-
Average of Forecasts made in the last 3 months									
Independent		1.9	2.3	2.2	4.2	98.0	4.31	57.4	8.7
New (marked *)		1.9	2.3	2.2	4.2	97.5	4.33	57.4	8.9
City		1.9	2.3	2.2	4.2	97.2	4.30	57.1	8.6
Range of Forecasts made in the last 3 months									
Highest		2.4	3.5	3.2	5.1	103.4	5.00	65.0	12.2
Lowest		1.4	1.4	1.4	3.4	91.7	3.75	50.0	3.4
Median		1.9	2.4	2.2	4.2	97.8	4.25	58.0	8.7
HM Treasury	Dec	1%	-	-	-	-	-	-	-

Table 3 - 2006: Growth in other selected variables (% change)

March 2006 Comparison

Forecasters & dates of forecasts		Real Household Disposable Income	Employment Growth	Claimant Unemployment (Q4,millions)	Manufacturing Output	World Trade in Manufactures	Current account (£bn)	PSNB (£bn 2006-07)
City Forecasters								
ABN AMRO	Jan	2.2	-	1.50 a	-	-	-40.1	33.3
Bank of America	Mar *	-	-	-	0.4	7.4	-18.7	46.8
Barclays Capital	Mar *	2.6	0.4	0.96	2.0	-	-33.5	38.0 cc
BNP Paribas	Feb	2.7	0.5	0.83	1.6	-	-25.1	37.5
Bridgewell	Mar *	2.7	0.6	0.87	0.8	-	-33.3	36.8
Capital Economics	Mar *	2.6	-0.2	1.00	1.0	7.5	-22.0	34.0
Citigroup	Jan	2.1	0.5	1.01	0.8	-	-33.6	36.8
Credit Suisse First Boston	Jan	-	-	1.10	-	-	-30.0	35.0
Daiwa Institute of Research	Mar *	2.0	0.2	0.97	0.4	7.3	-24.5	36.6
Daiwa Securities SMBC	Feb	-	-0.2	1.00	-	-	-25.0	43.0 cc
Deutsche Bank	Jan	-	0.5	1.02	-0.6	-	-26.0	38.0
Dresdner Kleinwort Wasserstein	Dec	-	-	-	-	-	-	38.0
Economic Perspectives	Mar *	0.5	-0.4	1.10	0.3	6.0	-19.0	46.0
Fortis Bank	Dec	-	-	0.95	-	7.0	-25.0	34.0
Goldman Sachs	Mar *	-	0.2	1.64 a	0.5	-	-27.1	37.5
Hermes	Mar *	-	0.0	1.00	-	-	-23.0	-
HSBC	Dec	-	-	1.10	1.1	-	-30.0	41.0
ING Financial Markets	Mar *	-	-	-	0.5	-	-27.5	40.0
J P Morgan	Mar *	-	-	-	-	-	-45.7	39.6
Lehman Brothers	Mar *	2.9	0.1	1.02	0.1	-	-27.7	42.0
Lombard Street	Mar *	1.9	0.5	0.95	-	-	-19.9	36.5
MacroEcon.com	Mar *	-	-	0.85	-	3.4	-27.0	37.0
Morgan Stanley	Mar *	2.0	0.7	-	-0.4	-	-	37.9
RBS Financial Markets	Mar *	2.2	0.2	0.93	-0.5	5.1	-31.6	36.7
Schroders Investment Management	Jan	-	-0.2	1.10	0.9	-	-21.0	44.0
Standard Chartered Bank	Mar *	-	-	0.95	-	-	-27.0	35.0
UBS	Feb	-	-	0.90	0.6	-	-25.4	36.0
WestLB AG	Mar *	-	0.8	-	1.0	-	-28.7	-
Williams de Broe	Feb	-	0.7	0.96	-0.2	8.6	-36.5	44.2
Non-City Forecasters								
Cambridge Econometrics	Dec	2.2	0.3 r	0.90 k	0.5	3.4 hh	-25.4	39.3 kcc
CBI	Nov	2.1	0.4	0.94	0.8	9.0	-28.3	39.2
CEBR	Mar *	2.0	0.3	0.98	0.6	-	-26.3	35.4 cc
Experian Business Strategies	Mar *	1.4	0.3	0.97	1.0	7.7	-35.4	33.7
EIU	Jan	1.9	0.2	1.06	0.8	7.0	-25.2	38.9
Global Insight	Mar *	3.2	0.2	0.94	1.0	-	-28.0	39.5
ITEM Club	Feb	2.4	0.3	0.94	0.5	8.0	-31.2	40.0
Liverpool Macro Research	Feb	-	-	0.92	-	-	-27.7	37.0 cc
Moody's Economy.com	Mar *	2.2	1.1	0.89	1.7	-	-28.0	-
NIESR	Jan	2.5	0.3	0.94 k	1.3	6.4 w	-32.6	36.4
OEF	Mar *	2.1	0.2	0.94	0.4	7.8	-30.8	35.3
EC	Nov	-	0.4	1.49 ak	2.2	-	-24.4	3.2 qq
OECD	Oct	-	0.3	5.10 aak	-	-	-2.3 g	3.0 eeg
IMF	Mar *	-	0.5	4.80 aak	-	-	-29.9	2.8 eeg
Average of Forecasts made in the last 3 months								
Independent		2.2	0.3	0.97	0.6	6.9	-28.4	38.2
New (marked *)		2.2	0.3	0.96	0.6	6.5	-27.9	38.3
City		2.2	0.3	0.97	0.5	6.5	-28.0	38.5
Range of Forecasts made in the last 3 months								
Highest		3.2	1.1	1.10	2.0	8.6	-18.7	46.8
Lowest		0.5	-0.4	0.83	-0.6	3.4	-45.7	33.3
Median		2.2	0.3	0.96	0.6	7.4	-27.7	37.3
HM Treasury	Dec	1½ to 2	-	-	1 to 1¼	7¼ w	-30	34

Table 4 - 2007: Growth in GDP and its components (% change)

March 2006 Comparison

Forecasters & dates of forecasts		GDP	Private Consumption	Government Consumption	Fixed Investment	Change in Inventories (£bn)	Domestic Demand	Total Exports	Total Imports	Net Trade Contribution
City Forecasters										
ABN AMRO	Jan	2.1	1.6	2.2	2.9 f	-	-	6.2	5.3	-
Bank of America	Mar *	2.2	2.0	1.2	2.8	3.2	2.0	3.9	3.1	0.1
Barclays Capital	Mar *	2.9	2.8	2.5	3.8	2.0	3.0	5.0	5.1	-0.2
BNP Paribas	Feb	2.6	2.4	2.6	4.4	0.0	2.7	4.3	4.5	-0.2
Bridgewell	Mar *	2.6	2.9	2.3	3.7	2.5	2.9	5.2	5.7	-0.4
Capital Economics	Mar *	2.5	2.3	2.5	2.5	0.0	2.3	3.0	2.0	0.2
Citigroup	Jan	-	-	-	-	-	-	-	-	-
Credit Suisse First Boston	Jan	-	-	-	-	-	-	-	-	-
Daiwa Institute of Research	Mar *	2.9	2.5	2.5	3.8	1.8	2.6	6.4	5.0	-
Daiwa Securities SMBC	Feb	2.3	2.0	2.0	4.4	0.0	2.4	3.7	4.0	-0.3
Deutsche Bank	Jan	-	-	-	-	-	-	-	-	-
Dresdner Kleinwort Wasserstein	Dec	-	-	-	-	-	-	-	-	-
Economic Perspectives	Mar *	0.1	-0.2	1.3	-2.2	0.0	-0.3	1.8	0.6	0.3
Fortis Bank	Dec	-	-	-	-	-	-	-	-	-
Goldman Sachs	Mar *	2.5	2.2	2.2	2.4	0.0 h	2.2	4.5	3.3	0.2
Hermes	Mar *	1.8	1.9	2.0	2.0	-0.8	1.9	4.5	4.7	-0.2
HSBC	Dec	-	-	-	-	-	-	-	-	-
ING Financial Markets	Mar *	2.4	2.1	2.0	3.0	3.1	2.5	6.8	6.5	-0.2
J P Morgan	Mar *	2.7	2.6	3.0	3.8	-9.4	2.3	6.8	5.1	0.3
Lehman Brothers	Mar *	2.2	0.9	1.7	2.3	2.4	1.3	6.5	3.0	0.9
Lombard Street	Mar *	1.4	1.5	2.9	1.2	2.5	1.7	1.3	2.5	-0.4
MacroEcon.com	Mar *	2.5	3.0	2.9	3.1	3.2	-	4.5	5.7	-
Morgan Stanley	Mar *	2.6	2.1	2.5	3.1	1.7	2.5	4.1	3.5	0.0
RBS Financial Markets	Mar *	2.6	2.4	4.2	4.2	2.0	2.8	3.8	4.1	-0.1
Schroders Investment Management	Jan	2.4	2.5	1.5	2.8	-	2.6	4.6	4.6	-0.2
Standard Chartered Bank	Mar *	2.5	1.8	2.0	4.8	2.8	2.4	3.8	3.3	0.0
UBS	Feb	2.8	2.9	2.7	4.0	-0.1	3.0	4.1	4.7	-0.4
WestLB AG	Mar *	1.9	1.8	1.1	2.6	3.7	1.9	3.9	3.4	0.0
Williams de Broe	Feb	2.9	2.3	2.5	2.5	3.3	2.4	7.2	5.0	0.5
Non-City Forecasters										
Cambridge Econometrics	Dec	2.8	2.5	2.8	3.8	1.9	2.8	5.7	5.4	-0.1
CBI	Nov	2.5	2.2	2.8	3.1	4.7	2.5	4.2	4.1	-0.1
CEBR	Mar *	2.1	1.8	1.9	2.2	4.6	2.1	2.9	2.6	-
Experian Business Strategies	Mar *	2.5	2.2	1.4	1.0	3.7	2.0	5.3	3.3	0.4
EIU	Jan	-	-	-	-	-	-	-	-	-
Global Insight	Mar *	2.6	2.4	2.2	3.4	-	2.8	5.0	5.4	-0.2
ITEM Club	Feb	2.9	2.3	3.0	4.3	0.0	2.8	7.0	6.2	0.0
Liverpool Macro Research	Feb	2.1	2.1 c	4.6 d	1.6 e	-	-	-	-	-
Moody's Economy.com	Mar *	2.5	2.5	3.5	3.7	2.0	2.6	5.5	5.8	-
NIESR	Jan	2.7	2.2	2.6	4.1	4.8 r	2.6	6.0	5.2	0.0
OEF	Mar *	2.8	2.6	2.5	4.0	2.6	2.9	5.7	5.7	-0.2
EC	Nov	2.8	2.1	2.7	4.2	2.7	2.6	5.2	4.4	0.1 h
OECD	Oct	2.7	2.1	2.3	5.2	0.0 h	2.6	7.5	6.8	-0.1
IMF	Mar *	2.7	2.6	2.4	3.5	0.0 h	2.6	4.9	4.2	0.0
Average of Forecasts made in the last 3 months										
Independent		2.4	2.2	2.3	3.0	1.5	2.3	4.8	4.3	0.0
New (marked *)		2.3	2.1	2.3	2.8	1.7	2.2	4.6	4.1	0.0
City		2.3	2.1	2.3	3.0	1.2	2.2	4.6	4.1	0.0
Range of Forecasts made in the last 3 months										
Highest		2.9	3.0	4.2	4.8	4.6	3.0	7.2	6.5	0.9
Lowest		0.1	-0.2	1.1	-2.2	-9.4	-0.3	1.3	0.6	-0.4
Median		2.5	2.3	2.4	3.3	2.0	2.5	4.6	4.6	0.0
HM Treasury	Dec	2½ to 3¼	2¼ to 2¾	2½	4¾ to 5¼	2.1 to 4.3	2¾ to 3¼	5¼ to 5¾	4¾ to 5¼	0

Table 5 - 2007: Growth in prices and monetary indicators (% change)

March 2006 Comparison

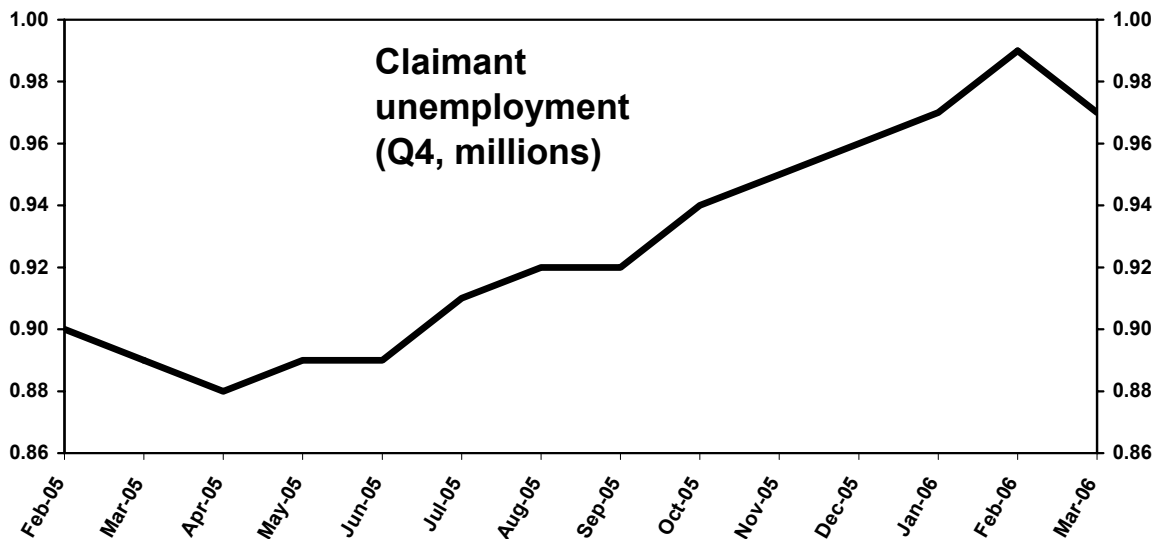
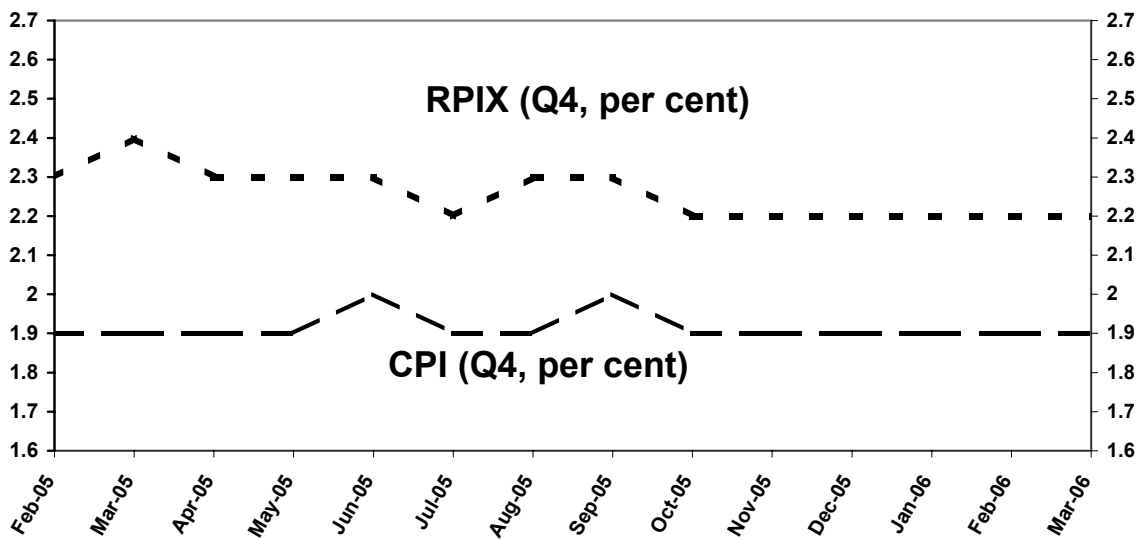
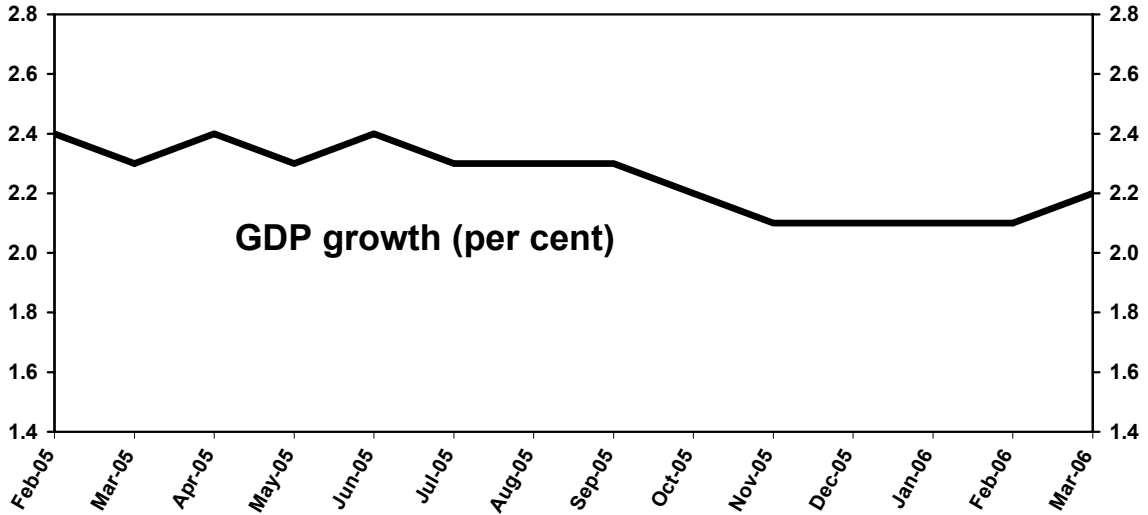
Forecasters & dates of forecasts		CPI (Q4)	RPI (Q4)	RPIX (Q4)	Average Earnings	Sterling Index (Q4)	Bank of England Repo Rate (Q4,%)	Oil price (\$)	M4
City Forecasters									
ABN AMRO	Jan	1.9	-	1.8	4.2 gg	-	4.50	-	-
Bank of America	Mar *	1.7	-	2.0	3.6	-	4.00	52.0	-
Barclays Capital	Mar *	2.0	2.5	2.3	4.7	96.6	4.75	-	-
BNP Paribas	Feb	2.0	2.8	2.3	4.2	-	4.75	-	-
Bridgewell	Mar *	2.4	3.1	3.0	4.3	99.9	5.50	-	11.7
Capital Economics	Mar *	1.6	2.0	1.8	4.0	97.9	4.00	45.0	7.0
Citigroup	Jan	-	-	-	-	-	-	-	-
Credit Suisse First Boston	Jan	-	-	-	-	-	-	-	-
Daiwa Institute of Research	Mar *	1.8	2.9	2.5	4.3	99.2	4.25	53.7	-
Daiwa Securities SMBC	Feb	2.0	2.4	2.2	4.2	-	4.50	50.0	-
Deutsche Bank	Jan	-	-	-	-	-	-	-	-
Dresdner Kleinwort Wasserstein	Dec	-	-	-	-	-	-	-	-
Economic Perspectives	Mar *	2.4	2.5	2.2	3.5	92.0	4.00	65.0	7.0
Fortis Bank	Dec	-	-	-	-	-	-	-	-
Goldman Sachs	Mar *	1.9	-	2.4	4.5	94.0 j	4.90 js	60.0	7.6 j
Hermes	Mar *	2.0	2.8	2.5	4.6	94.0	4.00	-	-
HSBC	Dec	-	-	-	-	-	-	-	-
ING Financial Markets	Mar *	1.9	2.5	2.1	4.1	-	4.75	48.0	-
J P Morgan	Mar *	1.7	-	-	-	-	4.75	-	-
Lehman Brothers	Mar *	2.0	2.0	1.9	3.6	92.0	3.75	-	-
Lombard Street	Mar *	1.9	1.9	2.1	3.9	102.2	3.50	40.0	7.5
MacroEcon.com	Mar *	2.8	3.3	3.2	4.6	-	4.20	44.0	3.1
Morgan Stanley	Mar *	2.0	2.6	2.0	4.4	-	5.00	47.9	-
RBS Financial Markets	Mar *	1.8	2.5	2.4	4.0	96.4	4.50	55.0	-
Schroders Investment Management	Jan	1.9	2.5	2.5	4.2	-	4.00	50.0	-
Standard Chartered Bank	Mar *	2.0	-	-	4.2	-	4.50	-	-
UBS	Feb	2.1	2.4	2.4	4.2	-	4.50	-	-
WestLB AG	Mar *	1.6	1.7	1.4	3.9	-	4.00	60.0	9.5
Williams de Broe	Feb	2.6	3.6	3.3	4.8	89.7 r	5.70	63.0	8.4
Non-City Forecasters									
Cambridge Econometrics	Dec	1.9 k	2.5 k	1.8 k	4.3 n	103.6 k	4.60 ks	63.4	-
CBI	Nov	2.0	2.3	1.9	4.4	99.1 r	4.25	51.5 ii	-
CEBR	Mar *	1.7	1.8	1.7	3.4	-	4.00	55.7	-
Experian Business Strategies	Mar *	1.9	2.3	2.4	3.8	95.7	4.00	50.3	-
EIU	Jan	-	-	-	-	-	-	-	-
Global Insight	Mar *	1.8	2.2	2.1	4.3	-	4.50	57.0	7.7
ITEM Club	Feb	2.0	2.9	2.7	5.1	95.4	4.50	55.0	5.7
Liverpool Macro Research	Feb	-	-	1.8	3.3	104.3	4.10	-	-
Moody's Economy.com	Mar *	1.9	2.9	3.0	-	-	5.00	47.3	7.8
NIESR	Jan	1.9	2.6 k	2.5 k	4.5 r	100.1 r	4.30 s	57.8 v	-
OEF	Mar *	1.8	2.6	2.4	4.2	102.1	4.25	53.9	5.7
EC	Nov	2.0	2.6	-	4.5 gg	-	-	60.3	-
OECD	Oct	1.6 k	-	-	-	-	4.50 s	-	-
IMF	Mar *	1.9 k	-	-	-	-	-	-	-
Average of Forecasts made in the last 3 months									
Independent		2.0	2.5	2.3	4.1	97.5	4.41	52.6	7.4
New (marked *)		1.9	2.4	2.3	4.1	97.1	4.34	52.2	7.4
City		2.0	2.5	2.3	4.2	96.7	4.43	52.4	7.7
Range of Forecasts made in the last 3 months									
Highest		2.8	3.6	3.3	5.1	104.3	5.70	65.0	11.7
Lowest		1.6	1.7	1.4	3.3	92.0	3.50	40.0	3.1
Median		1.9	2.5	2.3	4.2	96.6	4.50	52.9	7.5
HM Treasury	Dec	2	-	-	-	-	-	-	-

Table 6 - 2007: Growth in other selected variables (% change)

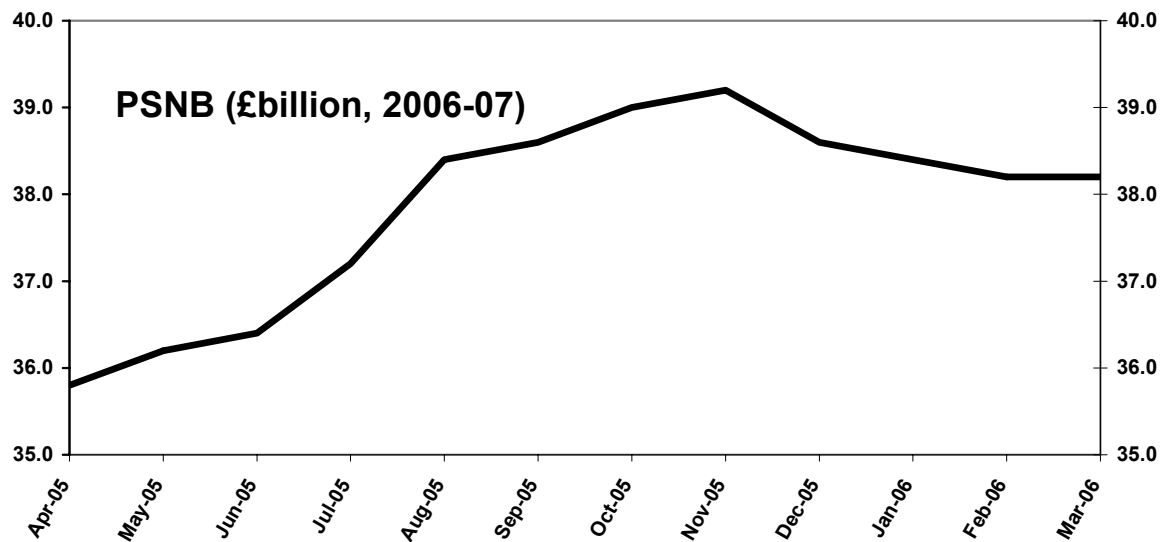
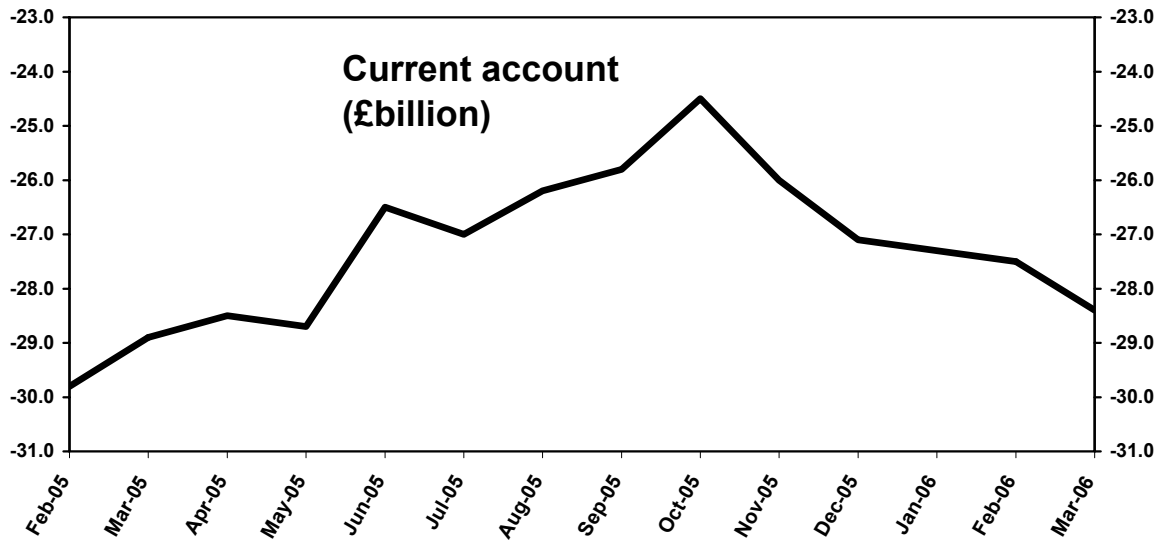
March 2006 Comparison

Forecasters & dates of forecasts		Real Household Disposable Income	Employment Growth	Claimant Unemployment (Q4, millions)	Manufacturing Output	World Trade in Manufactures	Current account (£bn)	PSNB (£bn 2007-08)
City Forecasters								
ABN AMRO	Jan	2.1	-	1.53 a	-	-	-41.4	28.7
Bank of America	Mar *	-	-	-	1.8	7.0	-16.9	48.6
Barclays Capital	Mar *	2.6	0.5	0.92	3.4	-	-31.3	37.0 cc
BNP Paribas	Feb	3.0	0.8	0.80	2.0	-	-23.6	35.0
Bridgewell	Mar *	2.8	1.0	0.83	2.0	-	-36.7	35.7
Capital Economics	Mar *	2.4	0.3	1.00	1.5	7.0	-20.0	29.0
Citigroup	Jan	-	-	-	-	-	-	-
Credit Suisse First Boston	Jan	-	-	-	-	-	-	-
Daiwa Institute of Research	Mar *	3.0	0.7	0.94	1.4	6.5	-24.5	36.2
Daiwa Securities SMBC	Feb	-	0.1	1.05	-	-	-27.0	40.0 cc
Deutsche Bank	Jan	-	-	-	-	-	-	-
Dresdner Kleinwort Wasserstein	Dec	-	-	-	-	-	-	-
Economic Perspectives	Mar *	-0.5	-1.3	1.40	1.0	4.0	-15.0	51.0
Fortis Bank	Dec	-	-	-	-	-	-	-
Goldman Sachs	Mar *	-	0.2	1.69 a	1.9	-	-27.9	34.6
Hermes	Mar *	-	0.1	1.10	-	-	-24.5	-
HSBC	Dec	-	-	-	-	-	-	-
ING Financial Markets	Mar *	-	-	-	1.4	-	-29.0	37.0
J P Morgan	Mar *	-	-	-	-	-	-45.2	35.4
Lehman Brothers	Mar *	1.7	-0.1	1.06	0.5	-	-25.5	38.0
Lombard Street	Mar *	0.8	0.5	1.02	-	-	-34.5	38.0
MacroEcon.com	Mar *	-	-	0.84	-	-	-27.0	33.0
Morgan Stanley	Mar *	2.4	0.7	-	0.5	-	-	36.2
RBS Financial Markets	Mar *	2.9	0.6	0.90	0.7	4.7	-32.3	36.1
Schroders Investment Management	Jan	-	0.0	1.10	1.9	-	-29.0	45.0
Standard Chartered Bank	Mar *	-	-	1.00	-	-	-23.0	32.0
UBS	Feb	-	-	0.90	2.0	-	-26.7	33.0
WestLB AG	Mar *	-	1.0	-	0.8	-	-29.5	-
Williams de Broe	Feb	-	0.9	1.00	0.2	8.6	-43.5	55.6
Non-City Forecasters								
Cambridge Econometrics	Dec	2.7	0.7	1.00 k	1.7	3.3 hh	-24.9	38.6 kcc
CBI	Nov	2.2	1.1	0.94	1.3	9.4	-28.1	37.0
CEBR	Mar *	1.8	0.2	1.05	0.4	-	-28.3	35.2 cc
Experian Business Strategies	Mar *	1.8	0.3	0.96	2.2	5.9	-38.4	32.0
EIU	Jan	-	-	-	-	-	-	-
Global Insight	Mar *	2.5	0.5	0.91	2.0	-	-28.3	33.6
ITEM Club	Feb	2.8	0.5	0.93	1.8	7.0	-28.0	41.0
Liverpool Macro Research	Feb	-	-	1.02	-	-	-34.5	39.8 cc
Moody's Economy.com	Mar *	2.9	0.9	0.87	2.8	-	-23.1	-
NIESR	Jan	2.9	0.4	1.02 k	2.4	6.5 w	-30.8	36.9
OEF	Mar *	2.9	0.8	0.93	0.8	6.6	-34.2	35.0
EC	Nov	-	0.6	1.46 ak	2.4	-	-21.5	3.0 qq
OECD	Oct	-	0.3	5.60 aa	-	-	-2.7 g	3.2 eeg
IMF	Mar *	-	0.6	4.70 aak	-	-	-29.6	2.6 eeg
Average of Forecasts made in the last 3 months								
Independent		2.3	0.4	0.98	1.5	6.4	-29.3	37.4
New (marked *)		2.1	0.4	0.98	1.5	6.0	-28.4	36.6
City		2.1	0.4	0.99	1.4	6.3	-28.8	37.8
Range of Forecasts made in the last 3 months								
Highest		3.0	1.0	1.40	3.4	8.6	-15.0	55.6
Lowest		-0.5	-1.3	0.80	0.2	4.0	-45.2	28.7
Median		2.5	0.5	0.96	1.8	6.6	-28.3	35.9
HM Treasury	Dec	2¼ to 2¾	-	-	1¼ to 2¼	7¼ w	-32¾	31

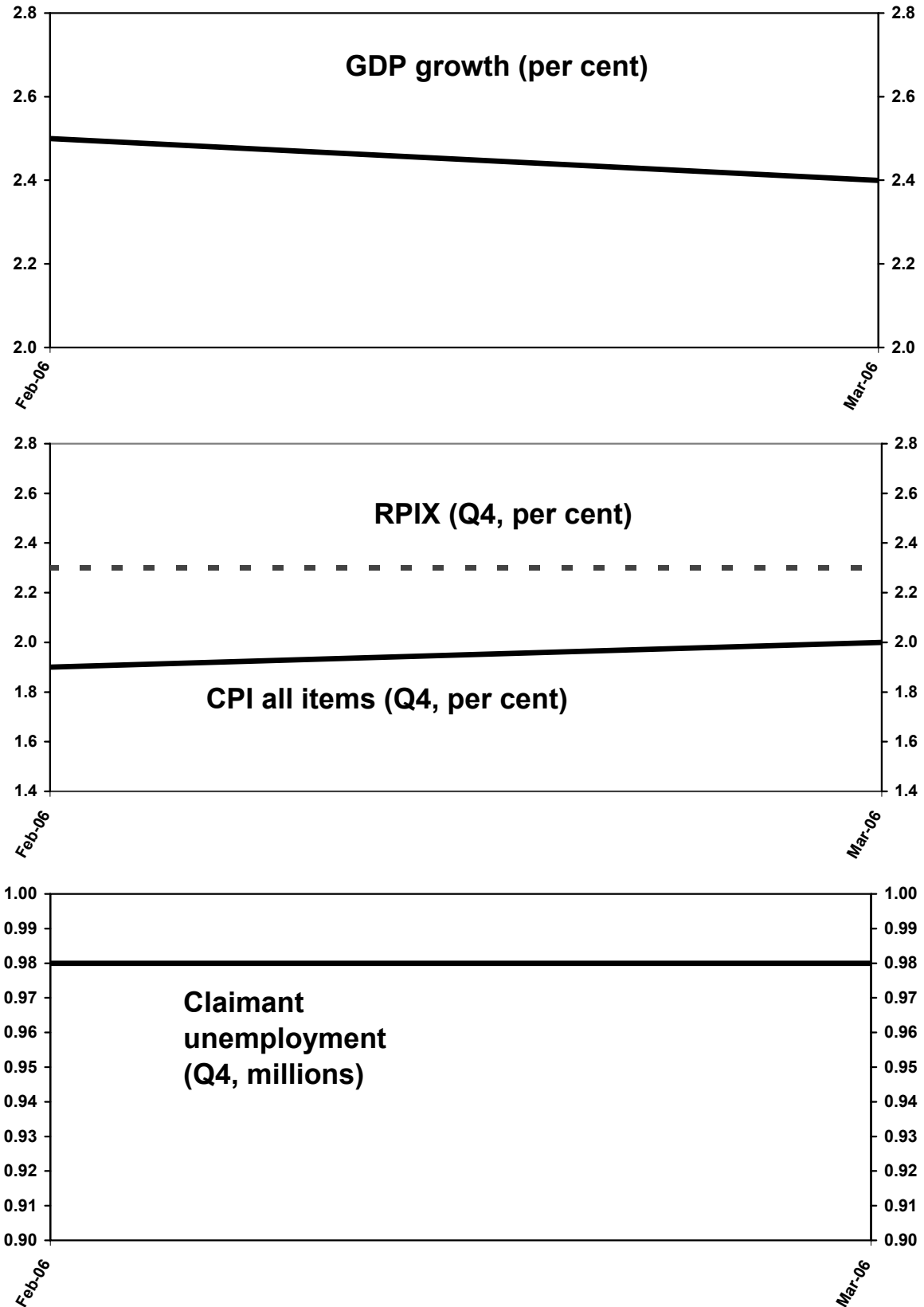
Average of independent forecasts for 2006; GDP growth, CPI & RPIX Inflation and Claimant Unemployment



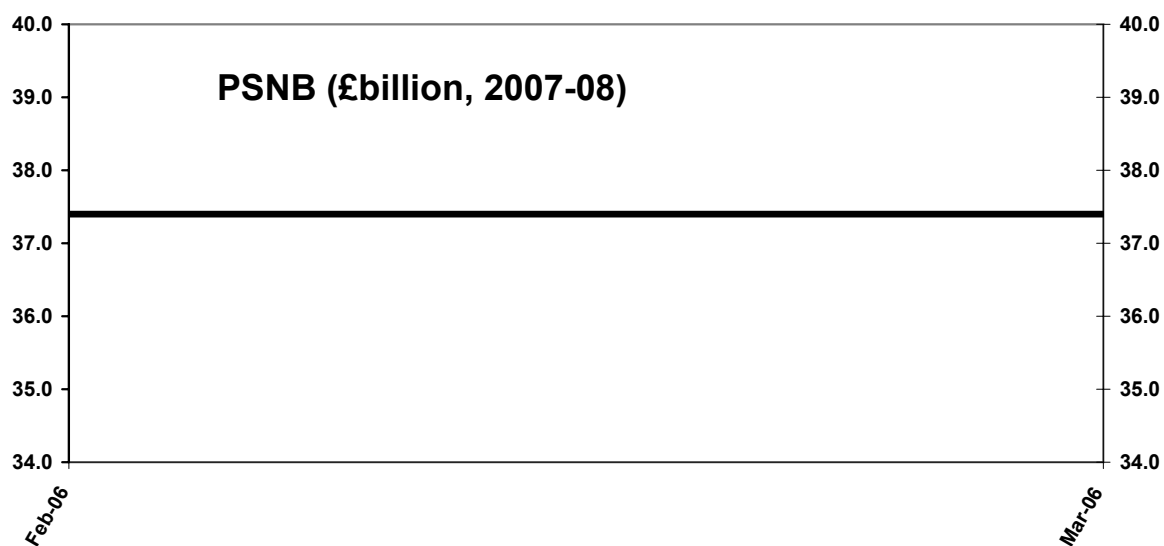
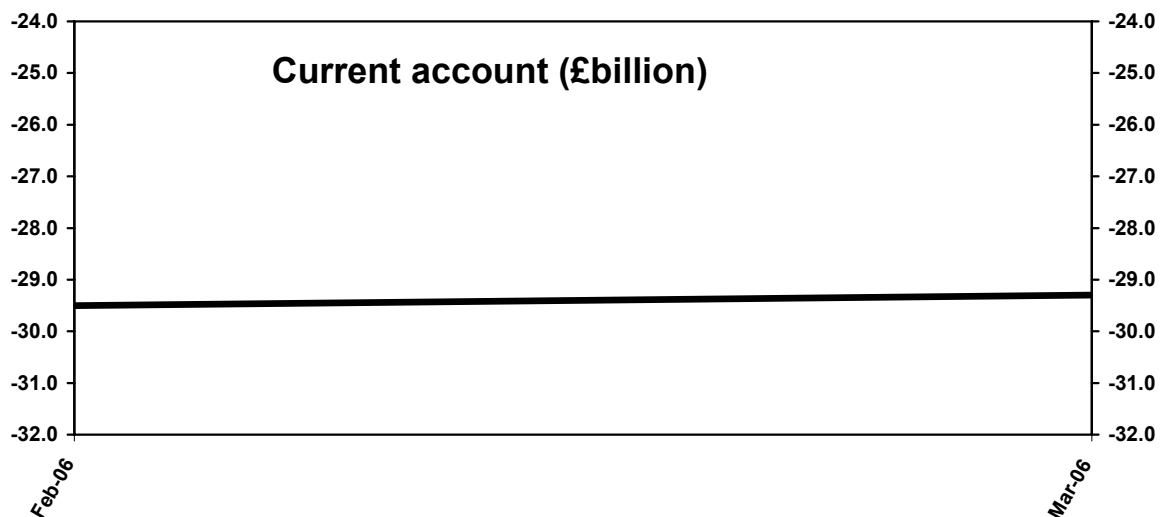
Average of independent forecasts for 2006; Current account and PSNB (2006-07, £billion)



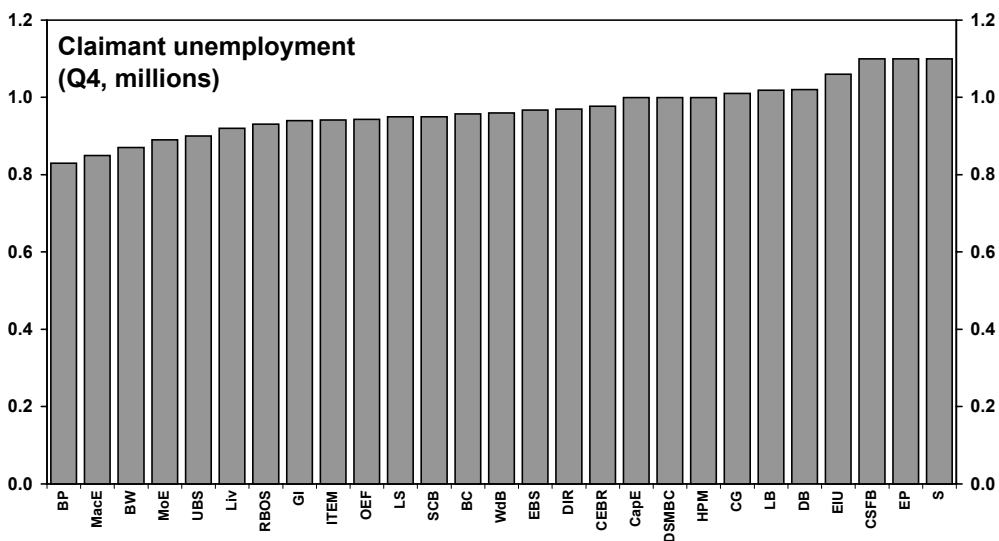
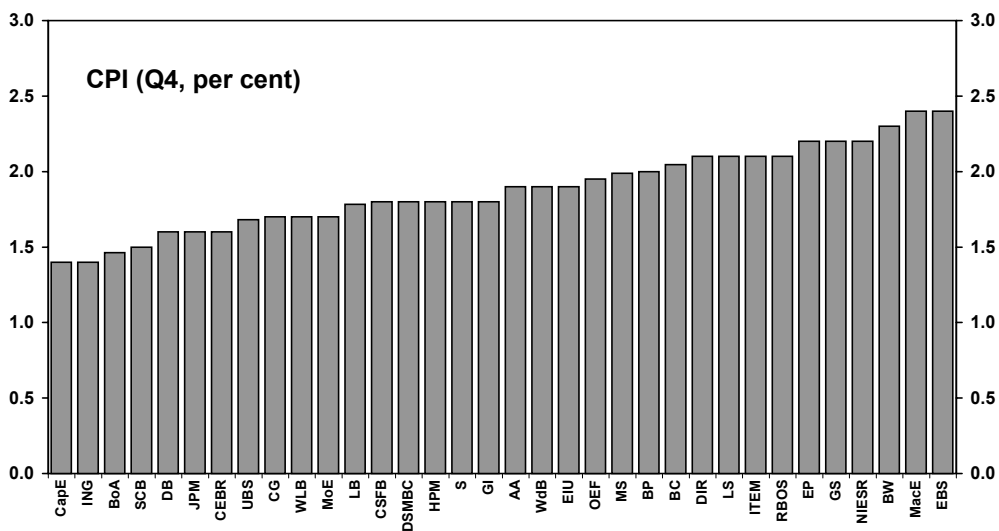
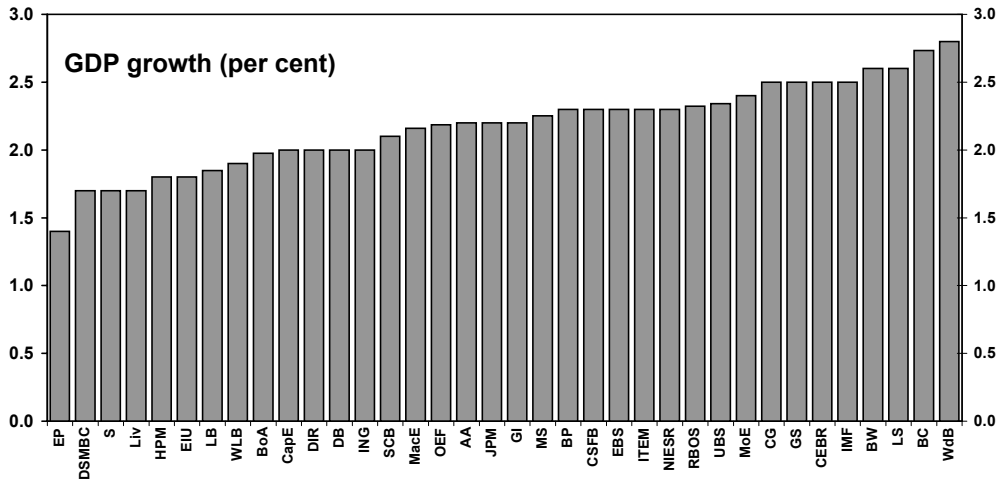
Average of independent forecasts for 2007; GDP growth, CPI & RPIX Inflation and Claimant Unemployment



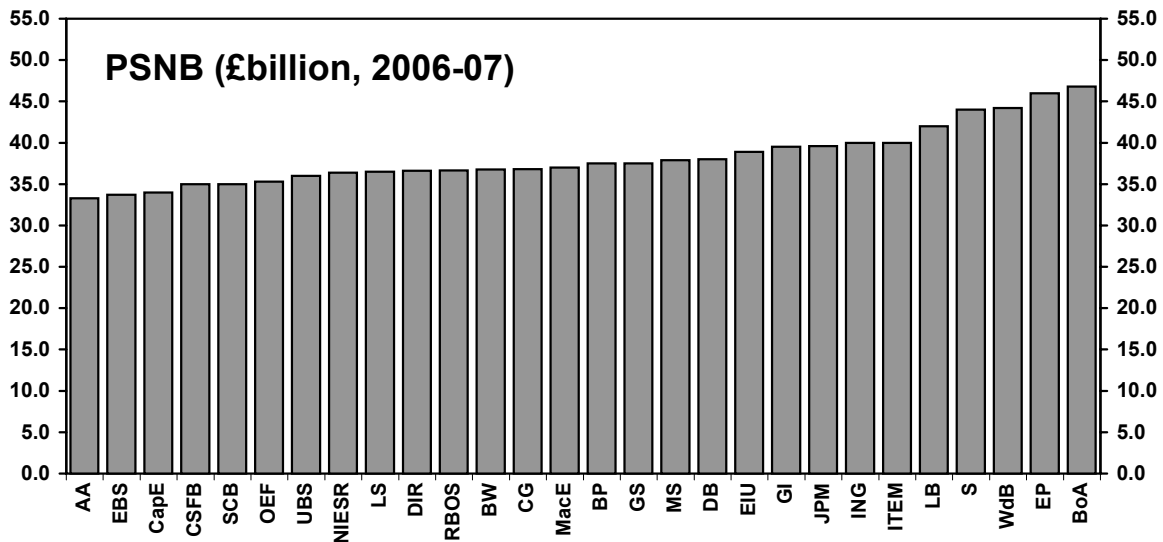
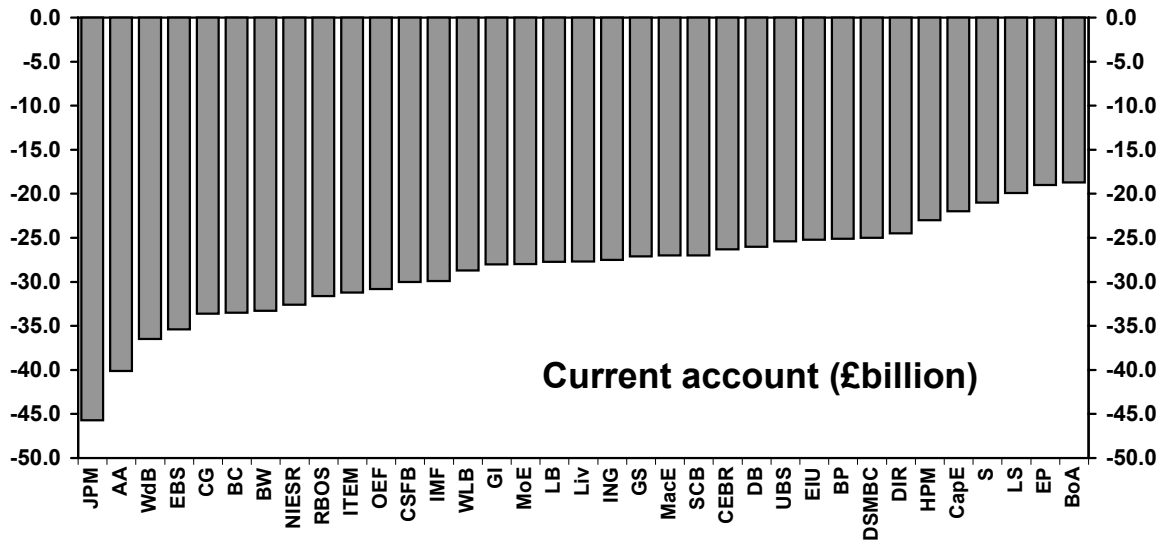
Average of independent forecasts for 2007; Current account and PSNB (2007-08, £billion)



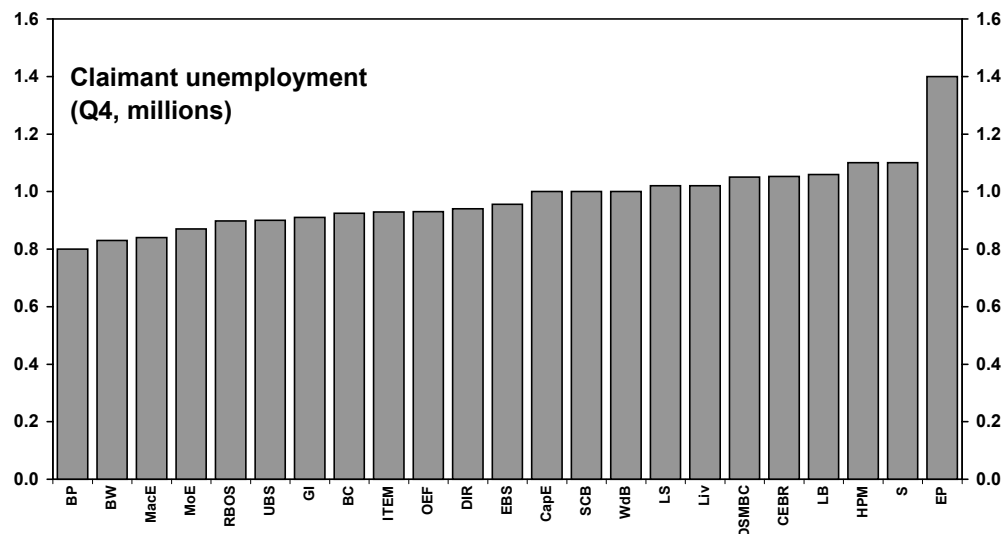
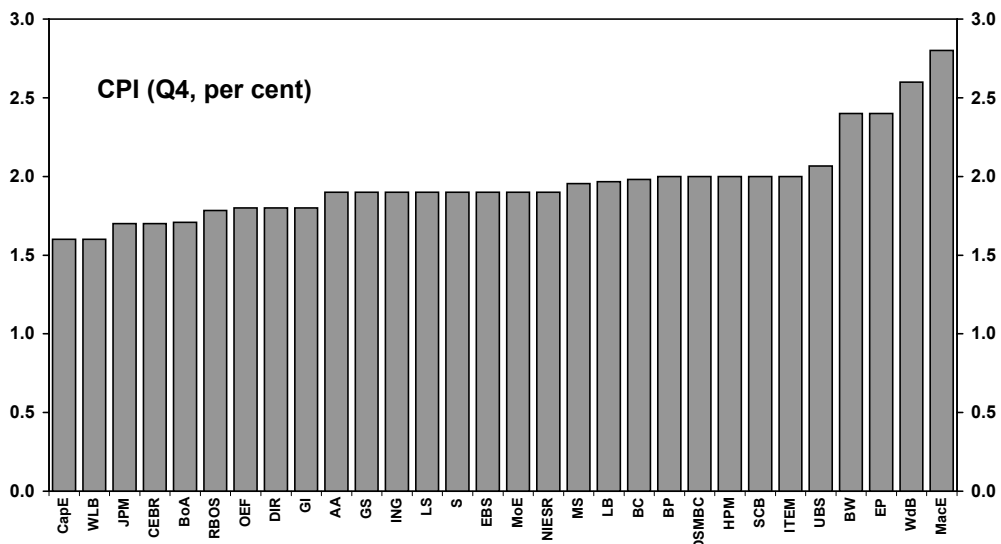
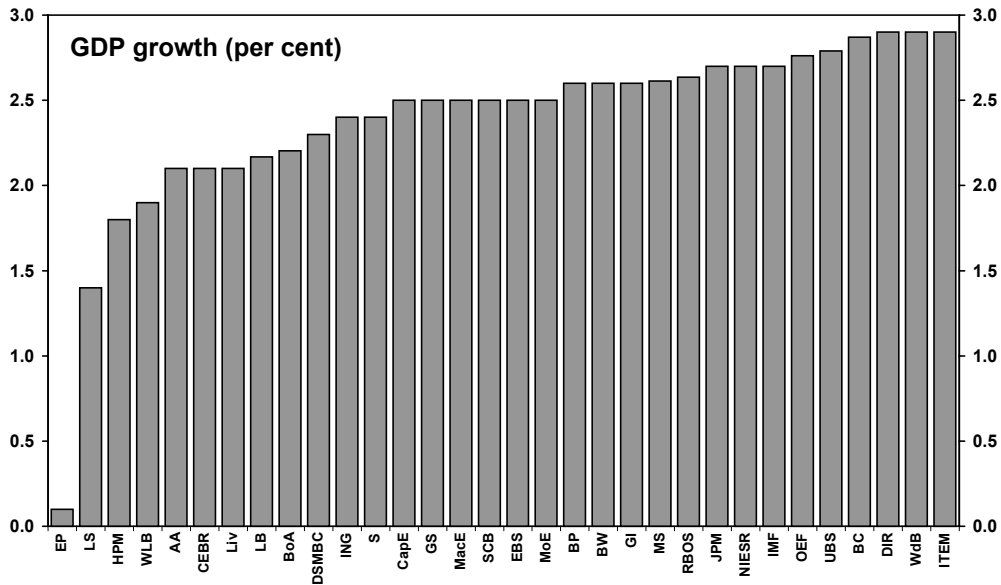
Range of Forecasts for 2006; GDP, CPI and Claimant Unemployment (millions) made in last 3 months



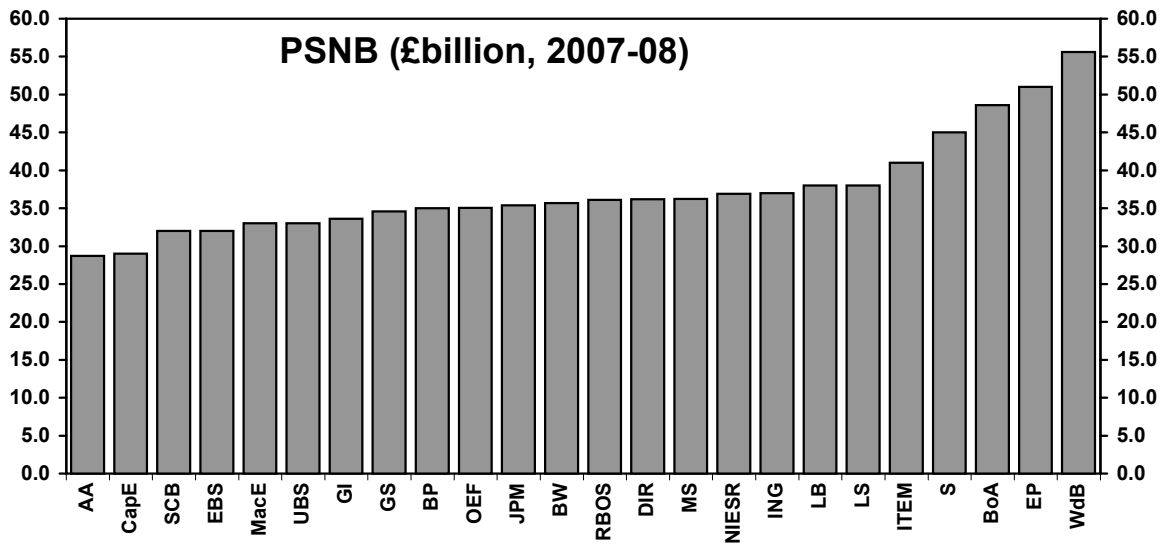
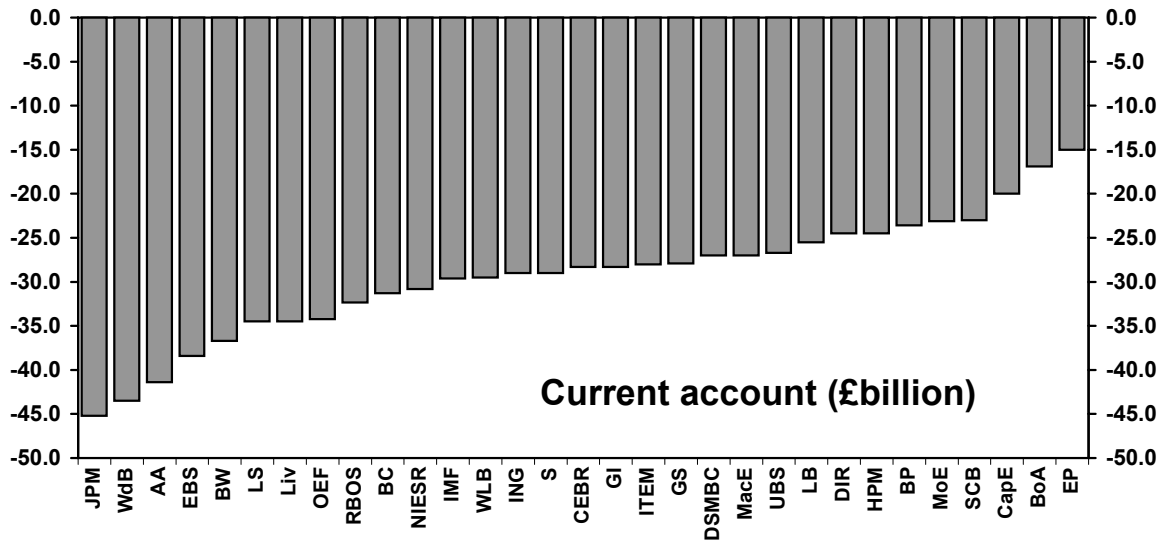
Range of Forecasts for 2006; Current Account (£bn) and PSNB (2006-07, £bn) made in last 3 months



Range of Forecasts for 2007; GDP, CPI and Claimant Unemployment (millions) made in last 3 months



Range of Forecasts for 2007; Current Account (£bn) and PSNB (2007-08, £bn) made in last 3 months



ANNEX 1: Forecasting institutions referred to in charts and tables

AA:	ABN AMRO
BoA:	Bank of America
BC:	Barclays Capital
BP:	BNP Paribas
BW:	Bridgewell
CamE:	Cambridge Econometrics
CapE:	Capital Economics Ltd
CG:	Citigroup
CBI:	Confederation of British Industry
CEBR:	Centre for Economics and Business Research Ltd
CSFB:	Credit Suisse First Boston
DIR:	Daiwa Institute of Research
DSMBC:	Daiwa Securities SMBC
DB:	Deutsche Bank
DKW:	Dresdner Kleinwort Wasserstein
EBS:	Experian Business Strategies (previously BSL)
EC:	European Commission
EIU:	Economist Intelligence Unit
EP:	Economic Perspectives
FB:	Fortis Bank
GI:	Global Insight (previously DRI-WEFA)
GS:	Goldman Sachs
HSBC:	HSBC Economics and Strategy
HPM:	Hermes Pension Management Ltd
ING:	ING Financial Markets
IMF:	International Monetary Fund
ITEM:	ITEM Club
JPM:	JP Morgan Chase
LB:	Lehman Brothers
Liv:	Liverpool Macro Research
LS:	Lombard Street Research Ltd
MacE:	MacroEcon.com
MoE:	Moody's Economy.com Inc (previously Economy.com)
MS:	Morgan Stanley
NIESR:	National Institute for Economic and Social Research
OECD:	Organisation for Economic Cooperation and Development
OEF:	Oxford Economic Forecasting
RBOS:	Royal Bank Of Scotland Financial Markets
S:	Schroders Investment Management
SCB:	Standard Chartered Bank
UBS:	UBS
WLB:	WestLB AG
WdB:	Williams de Broë

ANNEX 2: Data Definitions

GDP	National accounts table C2: Code ABMI
Private Consumption	Households + NPISH, National accounts table C2, Code ABRJ+HAYO
General Govt consumption	National accounts table C2, Code NMRY
Gross fixed investment	National accounts table C2, Code NPQT
Change in inventories (2000, £bn)	National accounts table C2, Code CAFU
Domestic Demand	National accounts table C2, Code YBIM
Exports (Goods & Services)	National accounts table C2, Code IKBK
Imports (Goods & Services)	National accounts table C2, Code IKBL
CPI (Q4)	Consumer Price Indices release, Table 1, Code CJYR
RPI (Q4)	Consumer Price Indices release, Table 1, Code CZBH
RPIX (Q4)	Consumer Price Indices release, Table 1, Code CDKQ
Headline average Earnings	Labour Market Statistics table 15, Code LNNC
Sterling Index (Q4, 1990=100)	ONS code AGBG
Bank of England repo rate (Q4)	(Previously 3 month interbank rate (Q4))
Oil price (\$ per barrel)	Brent crude, annual average
M4 growth	Bank of England Monetary and Financial statistics division Code VQJW, Calendar year (previously financial year)
RHDI	National accounts table J2, Code NRJR
Employment growth	Workforce jobs, Labour Market statistics table 4, Code DYDC
Claimant Unemployment (Q4, mn)	Labour market statistics table 10, code BCJD
Manufacturing Output	National accounts table B1, Code CKYY
World trade in Manufactures	
Current account (£bn)	Balance of payments release table A, Code HBOP
Public Sector Net Borrowing	Public sector finances release table PSF 1 / Public sector accounts table PSAT 1, Code ANNX

ANNEX 3: Notation used in tables

- a: ILO unemployment - millions
- b: underlying consumers expenditure deflator
- c: non-durable consumption
- d: current and capital expenditure, including stockbuilding
- e: private sector investment, stockbuilding and durable consumption
- f: investment and stockbuilding combined
- g: as a percentage of GDP
- h: contribution to GDP growth - percentage points
- i: growth in hourly earnings
- j: end period
- k: calendar year
- m: Average of UK Brent, Dubai, and West Texas Intermediate crude spot oil prices
- n: compensation of employees/head
- o: consumer price deflator to Q4
- p: calculated from general government financial deficit figures adjusted for privatisation proceeds
- q: forecast growth rates for Q4
- r: various definitions; refer to forecasters for details
- s: 3 month interbank rate
- u: general government current and capital expenditure plus stockbuilding
- v: average of spot price of Brent crude and Dubai light crude
- w: world trade in goods and services
- x: claimant unemployment rate
- z: OECD real imports of goods and services
- aa: ILO unemployment rate
- bb: households only
- cc: PSNCR (Formerly PSBR)
- dd: harmonized index of consumer prices (HICP)
- ee: general government financial balance
- ff: gross disposable income deflated by implicit price of private consumption
- gg: Compensation of employees (code DTWM)
- hh: World GDP
- ii: OPEC average
- jj: Industrial output
- kk: Final domestic demand
- ll: GDP deflator
- nn: VAT fraud adjusted
- pp: % change on previous year
- qq: budget deficit as % of GDP
- rr: employee jobs (code BCAJ)
- ss: financial year- end

ANNEX 4: Organisation Contact Details

<u>Organisation</u>	<u>Contact</u>	<u>Telephone number</u>
ABN AMRO	James Carrick	020 7678 8199
Bank of America	Lorenzo Codogno	020 7174 4101
Barclays Capital	George Johns	020 7773 4308
BNP Paribas	Alan Clarke	020 7595 8476
Bridgewell	Richard Jeffrey	020 7003 3500
Cambridge Econometrics	Rachel Beaven	01223 460 760
Capital Economics Ltd	Jonathan Loynes	020 7808 4983
Citigroup	Michael Saunders	020 7986 9297
CBI	Lai Wah Co	020 7395 8101
CEBR	Jonathan Said	020 7324 2840
Credit Suisse First Boston	Neville Hill	020 7888 1334
Daiwa Institute of Research	Don Egginton	020 7597 8470
Daiwa Securities SMBC	Grant Lewis	020 7597 8334
Deutsche Bank	George Buckley	020 7545 1372
Dresdner Kleinwort Wasserstein	Marchel Alexandrovich	020 7475 2472
Experian Business Strategies (previously BSL)	Neil Blake	020 7355 8233
EC	John Sheehy	0032 2 299 33 99
EIU	Phillip Whyte	020 7830 1287
Economic Perspectives	Peter Warburton	01582 539 861
Fortis Bank	Nick Kounis	0031 20535 7106
Global Insight (previously DRI-WEFA)	Howard Archer	020 8544 7893
Goldman Sachs	Ann Terry	020 7774 1166
Hermes Pensions Management Ltd	Yasushi Okuda	020 7680 2395
HSBC	John Butler	020 7991 6718
ING Financial Markets	James Knightley	020 7767 6614
ITEM club	Peter Spencer	01904 433771
J P Morgan	Malcolm Barr	020 7777 4792
Lehman Brothers	Alan Castle	020 7102 7745
Liverpool Macro Research	David Meenagh	029 2087 5198
Lombard St Research Ltd	Michael Taylor	020 7382 5930
MacroEcon.com	Mark Nielson	646 621 6828 (USA)
Moody's Economy.com (previously Economy.com)	Paul Guest	020 8785 5616
Morgan Stanley	Melanie Baker	020 7425 8607
Morgan Stanley	Vladimir Pillonca	020 7425 5839
NIESR	Rebecca Riley	020 7222 7665
Oxford Economic Forecasting	Adrian Cooper	01865 268 900
Royal Bank of Scotland	Geoffrey Dicks	020 7085 4277
Schroders Investment Management	Richard Batley	020 7658 2011
Standard Chartered Bank	Gavin Redknap	020 7280 6071
UBS	Amit Kara	020 7568 3522
WestLB AG	Alexander Krueger	0049 211 8267 1749
Williams de Broë	David Smith	020 7898 2402