



HM Treasury

FORECASTS FOR THE UK ECONOMY

A comparison of independent forecasts

Please note that Forecasts for the UK Economy is a summary of published material reflecting the views of the forecasting organisations themselves and does not in any way provide new information on the Treasury's own views. It contains only a selection of forecasters, which is subject to review. No significance should be attached to the inclusion or exclusion of any particular forecasting organisation. HM Treasury accepts no responsibility for the accuracy of material published in this comparison.

Payment of the subscription fee of £75, made out to " HM Treasury Votes Cash Account", should be sent with your order to Miss C T Coast-Smith, Public Enquiry Unit, HM Treasury, Room 110/2, Parliament Street, London, SW1P 3AG (Tel: 0207 270 4558), to whom subscription enquiries should also be addressed. A proforma invoice can be sent if requested.

Forecasts for the UK Economy are compiled and coordinated by Ruby Islam (0207 270 5403).

Please direct enquiries on the contents of this issue to Alice Kaphan (0207 270 5404).

The next edition will be published on 19 July 2000. It will also be made available at the Treasury's internet site: <http://www.hm-treasury.gov.uk>.

A comparison of independent forecasts, June 2000

This edition of the comparison contains 22 new forecasts. The tables below summarise the average and range of independent forecasts for 2000 and 2001 and show the average of this month's new forecasts.

Forecasts for 2000

	Independent ⁺				Average of new* forecasts
	Averages		June range		
	June	May	Lowest	Highest	
GDP growth (per cent)	3.1	3.1	2.3	3.6	3.0
Inflation rate (Q4: per cent)					
- RPI	3.1	3.0	2.3	4.5	3.1
- RPI exc MIPs	2.0	2.0	1.4	2.8	2.0
Claimant unemployment (Q4: mn)	1.08	1.07	0.96	1.20	1.10
Current account (£bn)	-17.5	-17.4	-27.0	-10.0	-17.6
PSNB** (2000-01: £bn)	-9.0	-8.2	-19.4	-5.0	-9.6

Forecasts for 2001

	Independent ⁺				Average of new* forecasts
	Averages		June range		
	June	May	Lowest	Highest	
GDP growth (per cent)	2.6	2.6	1.8	3.3	2.5
Inflation rate (Q4: per cent)					
- RPI	2.4	2.3	1.4	3.3	2.4
- RPI exc MIPs	2.4	2.4	1.3	2.7	2.3
Claimant unemployment (Q4: mn)	1.04	1.03	0.80	1.23	1.06
Current account (£bn)	-19.3	-19.4	-37.0	-8.0	-19.0
PSNB** (2001-02 : £bn)	-6.5	-5.9	-21.5	3.0	-6.8

Independent and City averages, and the range of forecasts, are based on forecasts made in the last three months (June institutions 20, May 9 institutions, April 10 institutions).

*Based on new forecasts received for the comparison this month

**PSNB: Public Sector Net Borrowing (Treasury forecast excluding windfall taxes and associated spending).

Note: All the averages exclude non-standard entries (see footnotes a to ff).

Forecasters & date of forecasts	2000		June 2000		Table 1				
	GDP & its components, at constant prices								
	Percentage changes on a year earlier unless stated otherwise								
	GDP	Private Consumption	Government expenditure	Fixed Investment	Change in Inventories	Domestic demand	Exports (goods & services)	Imports	
					'(£bn)				
City forecasters									
Abn Amro	May	3.0	3.4	3.5	4.4	1.0	4.0	6.6	8.8
Barclays Bank	Jun*	3.0	4.0	3.1	1.0	0.5	3.5	5.0	6.4
Barclays Capital	Jun*	3.1	3.4	2.4	2.7	2.1	3.5	8.0	8.2
Charterhouse	Jun*	3.6	3.6	4.0	3.8	1.7	4.0	7.2	7.6
Chase Manhattan	Jun*	2.9	3.0	3.4	3.6	3.2	3.7	7.3	7.5
Credit Lyonnais	Jun*	2.7	3.0	3.0	3.5	0.5	3.3	7.8	9.0
Credit Suisse First Boston	Jun*	2.8	3.3	2.2	3.5	2.6	3.6	6.0	5.5
Daiwa Institute of Research	Jun*	3.0	3.4	3.8	4.1	-0.8	3.6	6.2	7.0
Deutsche Bank	Apr	3.5	4.2	4.5	5.5	3.7	5.1	5.4	9.3
Dresdner Kleinwort Benson	Apr	3.1	3.6	3.5	4.8	1.2	4.1	5.7	8.2
Economic Perspectives	Jun*	2.3	3.5	2.9	0.2	1.0	3.0	2.1	4.7
Goldman Sachs	Jun*	3.0	3.7	3.8	4.0	2.2	4.4	7.1	9.5
Greenwich Natwest	Jun*	2.9	3.0	3.1	4.2	1.6	3.5	7.4	8.2
Hermes	May	3.0	3.5	4.0	3.1	-0.4	3.7	4.8	6.5
HSBC Econ & Strategy	Jun*	3.0	4.2	3.5	3.0	2.7	4.7	3.0	7.5
J P Morgan	May	3.2	4.0	4.7	3.3	0.7	4.2	4.3	7.3
Lehman Brothers	Apr	3.4	4.0	2.7	4.6	-1.3	3.8	7.8	8.5
Lombard St	Apr	3.1	3.3	2.8	5.0	1.5	3.7	4.5	6.0
Merrill Lynch	May	3.0	-	-	4.0	-	-	-	-
Morgan Stanley Dean Witter	Jun*	2.9	3.4	3.0	3.6	2.6	3.8	8.3	9.7
Natwest Group	Apr	3.0	3.2	3.5	4.2	1.3	3.7	4.9	6.6
Salomon S Barney/Citibank	May	3.4	3.7	3.8	5.6	-1.2	4.1	7.6	9.2
Schroders	Jun*	3.3	4.2	3.6	4.8	-	4.6	4.3	7.5
S.G.	Apr	3.3	3.2	4.0	3.3	1.7	4.0	5.5	5.4
Standard Chartered	Apr	3.4	3.8	3.7	6.0	2.0	4.5	3.8	6.8
Warburg Dillon Read	Jun*	2.7	3.1	1.8	3.0	2.6	3.2	7.2	8.0
WestLB Panmure	Mar	3.7	4.0	2.5	5.8	-1.9	3.9	7.3	7.4
Williams de Broe	Jun*	3.2	3.5	2.5	4.2	3.2	4.1	6.5	8.0
Non-City forecasters									
BSL	Jun*	2.9	3.4	2.9	1.7	0.2	3.2	7.6	7.8
Cambridge Econ	Jun*	2.8	3.6	3.5	3.2	0.4	3.7	5.0	7.3
CBI	May*	3.0	3.5	4.0	2.8	-0.9	3.5	5.1	6.2
CEBR	Mar	3.2	3.7	2.9	6.1	1.7	4.4	4.2	6.7
DRI	Jun*	3.2	4.2	4.5	3.2	1.5 gg	4.4	5.0	7.6
EIU	Jan	2.9	3.5	2.1	1.5	1.6	3.0	5.9	5.6
Henley	May	2.7	2.6	2.0	1.2	2.9	2.7	6.7	5.8
ITEM Club	May*	3.2	3.7	4.0	3.5	0.4	4.2	6.2	8.7
Liverpool Macro Research	May	3.3	1.5 c	5.7 d	4.9 e	-	-	-	-
NIESR	Apr	2.8	3.4	3.6	3.1	2.4	3.9	5.3	8.2
OEF	Jun*	3.2	3.6	3.8	4.5	1.6	4.2	6.2	7.9
Primark WEFA	Dec	3.0	3.0	2.4	0.9	1.1	2.9	7.3	6.1
EC	Apr	3.3	3.1	3.1	5.2	-0.4	3.6	6.9	7.3
OECD	Jun*	2.9	3.3	3.8	3.8	-	3.5	8.5	9.8
IMF	Apr	3.0	2.6	2.8	3.3	0.4	2.7	6.2	5.8
Average of Forecast made in last 3 months									
Independent		3.1	3.5	3.4	3.7	1.3	3.8	6.0	7.5
New (marked *)		3.0	3.5	3.3	3.3	1.4	3.8	6.2	7.7
City		3.1	3.5	3.3	3.8	1.4	3.9	5.9	7.6
Range of Forecasts made in last 3 months									
Highest		3.6	4.2	4.7	6.0	3.7	5.1	8.5	9.8
Lowest		2.3	2.6	1.8	0.2	-1.3	2.7	2.1	4.7
HM Treasury	Mar	2¼-3¼	3½-3¾	4	3¼-3¾	¼	3¼-4	5½-6	7¾-8¼

2000

June 2000

Table 2

Inflation and monetary indicators

Percentage changes on a year earlier unless stated otherwise

Forecasters & date of forecasts		RPI (Q4)	RPI exc MIPs (Q4)	Average earnings	Sterling index(Q4)	3- month interest rate(Q4,%)	Oil price \$	M0 (2000-1)	M4
City forecasters									
Abn Amro	May	3.2	1.9	5.1	108.4	6.35	23.2	5.2	3.1
Barclays Bank	Jun*	3.2	2.0	5.2	-	6.50	23.0	6.0	4.0
Barclays Capital	Jun*	3.1	1.9	5.5	111.7	6.50	-	-	-
Charterhouse	Jun*	4.5	2.8	5.9	102.1	7.15	-	7.7	8.9
Chase Manhattan	Jun*	2.6	1.9	5.4	107.5	6.20	23.0	-	-
Credit Lyonnais	Jun*	3.1	2.0	5.2	102.5	6.00	27.0	-	-
Credit Suisse First Boston	Jun*	3.0	2.0	5.3	-	-	-	7.5	5.0
Daiwa Institute of Research	Jun*	3.5	2.0	5.5	104.3	7.00	25.2	-	-
Deutsche Bank	Apr	3.0	2.0	5.9	104.6	6.60	-	7.8	6.6
Dresdner Kleinwort Benson	Apr	3.0	2.0	5.2	103.7	6.50	22.0	-	-
Economic Perspectives	Jun*	2.3	1.6	5.0	106.0	5.75	23.3	6.5	5.5
Goldman Sachs	Jun*	3.0	2.1	5.0	96.0	6.50	24.0	5.0 jk	9.1 jk
Greenwich Natwest	Jun*	3.2	2.1	5.4	103.9	6.25	25.0	-	-
Hermes	May	3.2	2.0	5.1	107.9	6.50	-	-	-
HSBC Econ & Strategy	Jun*	2.9	1.8	5.4	104.3	6.20	24.0	6.5	3.5
J P Morgan	May	3.0	2.0	5.5	-	6.70	-	-	-
Lehman Brothers	Apr	3.3	1.9	6.0	104.2	7.20	23.6	7.3	5.1
Lombard St	Apr	2.4	2.2	4.8	105.0	6.75	27.0	-	6.5
Merrill Lynch	May	-	1.9	5.4	-	6.30	-	-	-
Morgan Stanley Dean Witter	Jun*	3.6	2.3	5.0	106.2	6.70	-	-	5.8
Natwest Group	Apr	3.1	2.4	5.8	103.0	6.80	22.0	6.5	5.5
Salomon S Barney/Citibank	May	4.0	2.4	5.3	106.0	7.00	22.0	-	-
Schroders	Jun*	2.5	1.4	4.8	-	6.00	-	-	-
S.G.	Apr	-	1.8	5.5	103.0	6.90	27.0	10.0	6.0
Standard Chartered	Apr	2.5	2.2	4.2	97.0	6.50	23.0	13.0	7.0
Warburg Dillon Read	Jun*	2.9	1.7	5.2	-	6.00	25.0	-	-
WestLB Panmure	Mar	2.4	2.2	5.1	115.3	6.80	-	5.3	7.0
Williams de Broe	Jun*	2.6	1.7	5.1	105.4	6.50	25.4	4.9	9.1
Non-City forecasters									
BSL	Jun*	3.1	2.1	5.3	105.0	6.00	25.6	-	-
Cambridge Econ	Jun*	3.0 k	2.1 k	5.4	107.8 k	6.20 ks	24.0	-	-
CBI	May*	3.4	2.3	5.6	106.0	6.30 s	23.4	-	-
CEBR	Mar	2.2	1.6	5.0	107.3	6.50 s	28.0	-	-
DRI	Jun*	2.6	2.3	5.3	106.4	6.35	26.5	1.2	10.7
EIU	Jan	2.8	2.1	4.6	103.9	6.25	20.0	-	-
Henley	May	2.8	2.3	5.3	-	6.60	-	-	-
ITEM Club	May*	3.3	2.0	6.0	105.0	6.50	25.0	2.2 k	8.1 k
Liverpool Macro Research Group	May	-	2.2	3.9	108.0	6.10	-	-	-
NIESR	Apr	3.4	1.8	5.5	108.7	6.70	23.0	7.7	7.8
OEF	Jun*	3.3	2.0	5.6	104.8	6.50	25.9	6.5	8.6
Primark WEFA	Dec	2.9	2.2	4.6	-	6.50	20.6	-	-
EC	Apr	-	-	5.0	-	-	24.2	-	-
OECD	Jun*	-	-	-	-	6.60	-	-	-
IMF	Apr	-	2.1	4.7 i	-	-	-	-	-
Average of Forecasts made in last 3 months									
Independent		3.1	2.0	5.3	105.0	6.49	24.5	7.0	6.4
New (marked *)		3.1	2.0	5.3	104.8	6.38	24.7	5.9	6.8
City		3.1	2.0	5.3	104.4	6.51	24.2	7.4	5.8
Range of Forecasts made in last 3 months									
Highest		4.5	2.8	6.0	111.7	7.20	27.0	13.0	10.7
Lowest		2.3	1.4	3.9	96.0	5.8	22.0	1.2	3.1
HM Treasury	Mar	-	2¼	-	-	-	-	-	-

2000

June 2000

Table 3

Other variables

Percentage changes on a year earlier unless stated otherwise

Forecasters & dates of forecasts		RHDI	Employment	Claimant unemp. (Q4-mns)	Industrial production	Manuf'g output	World Trade	Current account (£bn	PSNB (£bn 00-01)
City forecasters									
Abn Amro	May	3.5	0.8	1.10	1.8	1.9	9.0	-16.5	-11.6
Barclays Bank	Jun*	3.4	0.9	1.10	-	1.0	-	-17.0	-10.0
Barclays Capital	Jun*	3.7	0.9	1.10	1.3	1.9	-	-13.7	-23.0 cc
Charterhouse	Jun*	3.0	1.6	0.96	1.9	2.2	-	-16.9	-18.7
Chase Manhattan	Jun*	4.8	-0.6	1.20	-	-	7.5	-27.0	-10.0
Credit Lyonnais	Jun*	-	-	1.00	0.9	0.7	7.0	-16.1	-7.5 cc
Credit Suisse First Boston	Jun*	3.0	0.3	1.10	1.1	-	-	-15.0	-5.0
Daiwa Institute of Research	Jun*	3.1	0.5	1.10	-	-	-	-15.0	-8.0
Deutsche Bank	Apr	4.0	-	1.06	2.1	2.2	-	-16.6	-8.8
Dresdner Kleinwort Benson	Apr	3.6	1.0	1.03	1.5	1.7	-	-18.6	-8.5
Economic Perspectives	Jun*	2.9	0.2	1.15	1.5	1.0	5.5	-21.0	-9.0
Goldman Sachs	Jun*	3.9	0.8	1.11	1.8	2.4	-	-20.3	-7.3
Greenwich Natwest	Jun*	2.6	1.1	1.67 aa	1.4	1.7	4.7	-16.1	-6.1
Hermes	May	3.3	0.8	1.08	-	1.5	-	-16.0	-8.0
HSBC Econ & Strategy	Jun*	4.0	0.9	1.04	1.5	1.5	6.6	-21.0	-7.0
J P Morgan	May	-	-	1.00	-	1.3	-	-17.0	-6.0
Lehman Brothers	Apr	4.0	1.5	1.04	2.3	3.5	8.5	-21.5	-
Lombard St	Apr	3.3	1.0	1.00	-	-	-	-17.9	0.0 cc
Merrill Lynch	May*	-	-	-	-	1.8	-	-18.0	-
Morgan Stanley Dean Witter	Jun*	4.1	1.2	1.12	1.1	1.2	-	-16.0	-6.0 cc
Natwest Group	Apr	5.4	-	1.11	0.7	1.0	-	-12.3	-7.0
Salomon S Barney/Citibank	May	3.1	1.1	0.99	0.8	1.3	-	-21.6	-8.4
Schroders	Jun*	-	-	-	3.0	1.2	-	-10.0	-6.0
S.G.	Apr	3.6	0.5	1.10	1.1	1.3	6.5	-18.0	-6.0
Standard Chartered	Apr	-	1.2	1.00	3.0	2.7	-	-17.0	-9.0
Warburg Dillon Read	Jun*	-	1.0	1.10	1.0	1.6	-	-10.0	-9.0
WestLB Panmure	Mar	3.5	1.8	1.00	2.6	2.7	-	-11.0	-7.00
Williams de Broe	Jun*	-	0.9	1.11	1.8	2.4	9.3	-18.0	-12.3
Non-City forecasters									
BSL	Jun*	4.2	0.9	1.09	0.6	0.9	8.2	-12.1	-8.9
Cambridge Econ	Jun*	3.2	1.0	1.30 k	1.5	1.3	3.6 hh	-16.9	2.7 kcc
CBI	May*	3.6	0.9	1.10	0.9	0.5	7.0	-18.6	-8.7
CEBR	Mar	4.3	1.4	1.10	-	2.3	-	-18.3	-4.6 cc
DRI	Jun*	4.4	1.1	4.00 x	2.5	-	-	-22.4	-19.4
EIU	Jan	4.5	0.5	1.06	2.1	1.9	6.7	-9.3	27.4 eek
Henley	May	2.8	0.8	1.00	-	2.9	-	-10.3	-
ITEM Club	May*	3.7	3.1	1.16	0.9	1.0	8.3	-20.1	-11.4
Liverpool Macro Research	May	-	-	1.03	-	-	-	-22.5	-14.1 cc
NIESR	Apr	3.5	0.7	1.14	-	1.2	8.4	-15.8	-6.1
OEF	Jun*	3.2	0.5	1.10	0.9	1.1	10.0	-18.2	-7.2
Primark WEFA	Dec	2.8	0.5	1.21	3.2	3.0	8.8	-10.0	-3.5 cc
EC	Apr	2.7 ff	1.0	1.65 aa	2.3	2.4	8.1	-13.8	-8.5
OECD	Jun*	-	0.9	5.7 x	-	2.0	-	-26.0	-
IMF	Apr	-	-0.3	4.30 x	-	-	-	-22.1	-
Average of Forecasts made in last 3 months									
Independent		3.6	0.9	1.08	1.5	1.7	7.6	-17.5	-9.0
New (marked *)		3.6	0.9	1.10	1.4	1.4	7.4	-17.6	-9.6
City		3.6	0.8	1.07	1.6	1.7	7.2	-17.2	-8.7
Range of Forecasts made in last 3 months									
Highest		5.4	3.1	1.20	3.0	3.5	10.0	-10.0	-5.0
Lowest		2.6	-0.6	0.96	0.6	0.5	4.7	-27.0	-19.4

Forecasters & date of forecasts	2001					June 2000		Table 4	
	GDP & its components, at constant prices					Change in Inventories (£bn)	Domestic demand	Exports (goods & services)	Imports
	Percentage changes on a year earlier unless stated otherwise								
	GDP	Private Consumption	Government expenditure	Fixed investment					
City forecasters									
Abn Amro	May	2.4	2.5	3.2	4.5	1.0	3.0	5.6	6.7
Barclays Bank	Jun*	2.0	1.8	2.7	0.5	0.5	1.7	6.2	5.0
Barclays Capital	Jun*	2.9	2.9	2.9	3.3	2.0	2.9	4.5	4.3
Charterhouse	Jun*	2.5	2.6	3.8	3.0	0.0	2.7	5.0	4.9
Chase Manhattan	Jun*	3.0	3.4	4.0	5.8	4.2	4.0	9.1	9.9
Credit Lyonnais	Jun*	2.3	2.6	3.5	4.2	0.5	3.0	5.0	6.6
Credit Suisse First Boston	Jun*	2.5	2.8	2.0	4.5	2.0	2.8	7.5	6.0
Daiwa Institute of Research	Jun*	3.3	2.4	3.0	4.1	0.6	3.0	7.1	5.5
Deutsche Bank	Apr	3.1	3.4	5.0	3.9	2.6	3.2	6.0	6.0
Dresdner Kleinwort Benson	Apr	2.9	2.8	3.6	3.3	2.3	3.2	5.5	6.0
Economic Perspectives	Jun*	1.8	2.9	2.6	-2.7	1.4	1.9	1.8	2.1
Goldman Sachs	Jun*	2.4	2.7	3.3	6.8	1.3	3.5	5.5	8.1
Greenwich Natwest	Jun*	2.3	2.2	3.2	2.8	2.0	2.5	4.7	4.8
Hermes	May	2.9	2.7	3.2	2.9	-0.2	2.9	5.2	4.8
HSBC Econ & Strategy	Jun*	2.0	3.0	3.5	2.0	1.8	2.9	2.0	4.5
J P Morgan	May	3.0	3.5	4.5	2.1	2.0	3.6	3.0	4.3
Lehman Brothers	Apr	2.9	3.3	3.0	2.9	-1.6	3.0	7.1	6.8
Lombard St	Apr	2.4	2.4	2.4	2.5	2.4	2.5	5.0	5.0
Merrill Lynch	May	2.4	-	-	4.0	-	-	-	-
Morgan Stanley Dean Whitter	Jun*	2.6	3.3	4.2	3.8	1.1	3.4	6.3	7.4
Natwest Group	Apr	2.4	2.1	3.2	2.8	1.7	2.4	5.1	4.4
Salomon S Barney/Citibank	May	3.0	3.5	3.6	4.0	1.2	3.9	7.0	8.9
Schroders	Jun*	3.0	3.5	4.1	6.5	-	4.1	3.5	6.1
S.G.	Apr	2.6	2.8	3.6	2.9	2.0	3.0	5.1	5.5
Standard Chartered	Apr	2.9	3.0	4.0	5.0	2.3	3.1	4.2	5.0
Warburg Dillon Read	Jun*	2.5	2.9	2.0	2.8	3.2	2.7	4.7	4.8
WestLB Panmure	Mar	3.8	3.6	2.4	7.1	-1.9	4.0	6.4	6.3
Williams de Broe	Jun*	2.7	2.8	3.3	3.2	2.4	2.9	3.2	3.7
Non-City forecasters									
BSL	Jun*	2.6	2.8	3.3	2.3	2.4	3.1	7.0	7.7
Cambridge Econ	Jun*	2.3	2.4	3.1	2.8	0.6	2.6	4.5	5.0
CBI	May*	2.6	2.4	3.0	3.2	1.9	3.0	4.6	5.4
CEBR	Mar	2.7	2.4	3.0	3.7	1.4	2.7	3.6	3.6
DRI	Jun*	3.0	3.5	2.9	3.0	1.1 gg	3.2	7.5	7.1
EIU	Jan	2.1	2.3	1.9	3.0	2.2	2.4	5.7	6.0
Henley	May	3.1	2.9	2.4	3.3	3.9	3.0	5.4	4.8
ITEM Club	May*	2.7	2.8	2.8	5.2	0.1	3.5	5.5	6.8
Liverpool Macro Research	May	3.2	2.0 c	3.7 d	6.0 e	-	-	-	-
NIESR	Apr	2.5	2.5	3.0	3.9	3.2	2.9	5.9	6.6
OEF	Jun*	2.5	2.5	3.0	4.2	1.8	2.9	5.6	6.3
Primark WEFA	Dec	2.6	2.2	2.5	3.4	1.2	2.5	5.5	4.9
EC	Apr	3.0	2.6	3.5	4.0	-0.4	3.0	6.1	5.7
OECD	Jun*	2.3	2.6	3.2	3.4	-	2.9	6.7	7.7
IMF	Apr	2.0	1.8	2.7	2.9	-0.2	2.1	4.9	4.4
Average of Forecasts made in last 3 months									
Independent		2.6	2.7	3.3	3.5	1.6	3.0	5.3	5.7
New (marked *)		2.5	2.8	3.2	3.4	1.5	3.0	5.3	5.9
City		2.6	2.8	3.4	3.4	1.5	3.0	5.2	5.7
Range of Forecasts made in last 3 months									
Highest		3.3	3.5	5.0	6.8	4.2	4.1	9.1	9.9
Lowest		1.8	1.8	2.0	-2.7	-1.6	1.7	1.8	2.1
HM Treasury	Mar	2¼-2½	2-2½	2¼	3¼-4¼	0	2½-3	5½-6	5½-6

2001

June 2000

Table 5

Inflation and monetary indicators

Percentage changes on a year earlier unless stated otherwise

Forecasters & date of forecasts		RPI (Q4)	RPI exc MIPs (Q4)	Average earnings	Sterling index(Q4)	3-month interest rate(Q4,%)	Oil price(\$)	M0 (2001-2002)	M4
City forecasters									
Abn Amro	May	3.0	2.6	5.1	105.0	6.80	20.0	5.7	6.4
Barclays Bank	Jun*	2.2	2.5	4.2	-	6.00	19.0	5.0	5.0
Barclays Capital	Jun*	2.0	2.4	4.5	107.9	6.00	-	-	-
Charterhouse	Jun*	2.7	2.6	5.2	99.1	6.78	-	7.9	8.0
Chase Manhattan	Jun*	3.3	2.4	5.1	106.4	7.20	23.0	-	-
Credit Lyonnais	Jun*	1.9	2.0	4.6	99.0	5.50	24.0	-	-
Credit Suisse First Boston	Jun*	2.3	2.0	4.5	-	-	-	5.0	4.0
Daiwa Institute of Research	Jun*	3.2	2.5	5.4	99.8	7.30	21.8	-	-
Deutsche Bank	Apr	2.4	2.5	4.0	102.1	6.00	-	6.9	5.4
Dresdner Kleinwort Benson	Apr	2.0	2.3	4.8	100.0	6.00	19.0	-	-
Economic Perspectives	Jun*	1.6	1.3	4.5	100.0	5.00	21.0	5.0	6.5
Goldman Sachs	Jun*	2.9	2.5	4.6	95.0	6.40	21.5	5.5 jk	8.7 jk
Greenwich Natwest	Jun*	2.6	2.5	4.5	99.8	6.08	23.0	-	-
Hermes	May	2.3	2.2	4.8	100.0	6.00	-	-	-
HSBC Econ & Strategy	Jun*	1.4	2.3	4.5	98.6	5.00	20.0	5.5	4.0
J P Morgan	May	2.5	2.5	5.0	-	7.20	-	-	-
Lehman Brothers	Apr	2.1	2.7	5.1	110.6	6.09	20.0	4.1	9.6
Lombard St	Apr	2.6	2.7	5.2	100.0	6.50	27.0	-	6.2
Merrill Lynch	May	-	2.6	4.9	-	5.70	-	-	-
Morgan Stanley Dean Witter	Jun*	2.8	2.4	4.7	103.5	6.40	-	-	3.1
Natwest Group	Apr	1.9	2.3	4.3	99.5	6.00	19.0	6.0	6.0
Salomon S Barney/Citibank	May	3.3	2.7	5.2	104.0	7.60	22.0	-	-
Schroders	Jun*	2.0	2.5	3.6	-	5.50	-	-	-
S.G.	Apr	-	2.3	5.0	98.0	5.50	23.5	8.5	7.0
Standard Chartered	Apr	2.7	1.9	3.8	92.0	6.00	20.0	9.0	5.0
Warburg Dillon Read	Jun*	1.7	2.0	4.5	-	5.50	20.5	-	-
WestLB Panmure	Mar	2.5	2.3	4.9	114.0	6.80	-	6.0	6.8
Williams de Broe	Jun*	2.1	2.3	4.7	104.4	6.10	25.5	3.4	9.3
Non-City forecasters									
BSL	Jun*	2.1	2.4	5.0	104.0	5.25	21.4	-	-
Cambridge Econ	Jun*	2.3 k	2.4 k	4.6	107.4 k	5.90 ks	24.0	-	-
CBI	May*	2.5	2.4	5.2	103.0	6.30 s	20.0	-	-
CEBR	Mar	2.6	2.3	4.9	104.3	7.00 s	29.5	-	-
DRI	Jun*	2.8	2.6	5.1	102.3	6.00	22.6	2.3	8.1
EIU	Jan	2.4	2.5	4.5	103.5	5.75	17.8	-	-
Henley	May	2.2	2.3	4.9	-	6.00	-	-	-
ITEM Club	May*	2.4	2.3	5.1	99.00	6.30	24.0	3.8 k	8.0 k
Liverpool Macro Research	May	-	2.5	5.1	108.3	5.80	-	-	-
NIESR	Apr	2.7	2.2	4.4	107.2	7.00	23.0	5.4	9.7
OEF	Jun*	2.6	2.2	4.9	104.0	6.30	22.0	7.1	10.7
Primark WEFA	Dec	1.2	2.5	4.5	-	5.75	20.6	-	-
EC	Apr	-	-	4.7	-	-	21.2	-	-
OECD	Jun*	-	-	-	-	7.00	-	-	-
IMF	Apr	-	2.5	4.1 i	-	-	-	-	-
Average of Forecasts made in last 3 months									
Independent		2.4	2.4	4.7	102.0	6.17	22.1	5.8	6.7
New (marked *)		2.4	2.3	4.7	101.6	6.08	22.1	5.2	6.5
City		2.4	2.4	4.7	101.2	6.16	21.7	6.0	6.1
Range of Forecasts made in last 3 months									
Highest		3.3	2.7	5.4	110.6	7.60	27.0	9.0	10.7
Lowest		1.4	1.3	3.6	92.0	5.00	19.0	2.3	3.1
HM Treasury	Mar	-	2½	-	-	-	-	-	-

2001

June 2000

Table 6

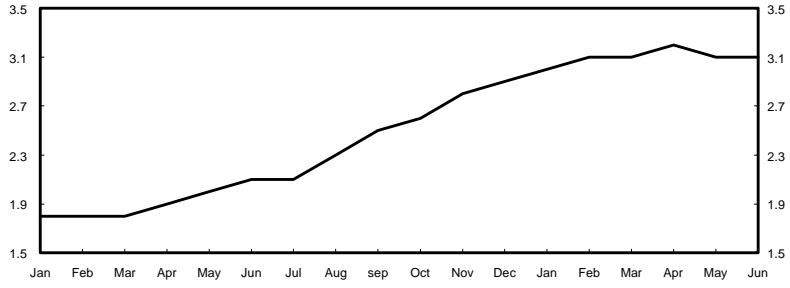
Other variables

Forecasters & dates of forecasts	Percentage changes on a year earlier unless stated otherwise								
	RHDI	Employment	Claimant unemp. (Q4-mns)	Industrial production	Manuf'g output	World Trade	Current account (£ bn)	PSNB (£bn 01-02)	
City forecasters									
Abn Amro	May	2.4	0.5	1.10	1.8	1.8	7.6	-21.5	-6.2
Barclays Bank	Jun*	2.2	0.2	1.20	-	2.0	-	-14.0	-7.0
Barclays Capital	Jun*	2.7	0.2	1.10	2.7	2.7	-	-14.8	-7.5 cc
Charterhouse	Jun*	2.4	0.1	0.89	2.0	2.0	-	-21.5	-21.5
Chase Manhattan	Jun*	5.6	0.5	1.00	-	-	8.7	-37.0	-10.0
Credit Lyonnais	Jun*	-	-	1.00	1.6	1.2	5.0	-18.6	-3.5 cc
Credit Suisse First Boston	Jun*	2.8	0.1	1.00	2.5	-	-	-15.0	0.0
Daiwa Institute of Research	Jun*	2.6	0.3	1.10	-	-	-	-11.3	-5.0
Deutsche Bank	Apr	3.2	-	1.00	2.5	2.6	-	-19.7	-8.8
Dresdner Kleinwort Benson	Apr	2.5	1.0	0.91	2.5	2.8	-	-22.4	-4.5
Economic Perspectives	Jun*	2.2	0.3	1.15	2.2	2.0	5.0	-18.0	3.0
Goldman Sachs	Jun*	2.9	0.5	1.03	2.7	2.8	-	-30.6	-4.7
Greenwich Natwest	Jun*	3.2	0.3	1.66 aa	2.4	2.2	5.1	-13.5	-5.5
Hermes	May	3.1	0.8	1.08	-	2.8	-	-17.0	-6.0
HSBC Econ & Strategy	Jun*	2.5	0.8	1.00	1.0	1.0	4.7	-20.0	-2.0
J P Morgan	May	-	-	1.10	-	2.5	-	-21.0	-3.0
Lehman Brothers	Apr	3.0	1.0	1.10	2.8	2.9	7.5	-19.5	-
Lombard St	Apr	3.1	0.6	1.10	-	-	-	-19.4	-7.0 cc
Merrill Lynch	May	-	-	-	-	2.3	-	-21.0	-
Morgan Stanley Dean Witter	Jun*	3.6	1.3	1.09	1.5	1.4	-	-16.0	-5.0 cc
Natwest Group	Apr	5.3	-	1.07	2.6	2.4	-	-10.8	-5.5
Salomon S Barney/Citibank	May	3.5	1.5	0.80	1.9	2.0	-	-31.1	-7.0
Schroders	Jun*	-	-	-	2.8	2.3	-	-8.0	-5.0
S.G.	Apr	2.7	0.4	1.10	1.5	1.5	7.5	-20.0	-6.0
Standard Chartered	Apr	-	0.9	1.20	3.4	3.5	-	-15.0	-7.0
Warburg Dillon Read	Jun*	-	1.0	0.90	2.0	2.2	-	-10.0	-6.0
WestLB Panmure	Mar	2.8	1.2	0.90	2.5	2.4	-	-9.0	-11.0
Williams de Broe	Jun*	-	0.6	1.09	3.7	3.7	6.9	-19.3	-12.3
Non-City forecasters									
BSL	Jun*	3.7	0.5	1.10	1.8	1.9	6.2	-23.6	-5.4
Cambridge Econ	Jun*	2.8	0.5	1.40 k	1.4	1.7	3.1 hh	-18.6	8.6 kcc
CBI	May*	3.5	0.9	1.10	2.2	1.9	5.1	-17.4	-6.9
CEBR	Mar	2.2	0.8	0.90	-	0.9	-	-18.6	-13.6 cc
DRI	Jun*	3.2	1.0	4.20 x	3.8	-	-	-21.0	-15.3
EIU	Jan	3.5	0.2	1.15	2.0	2.0	6.8	-9.5	24.7 eek
Henley	May	3.0	1.0	0.90	-	2.9	-	-9.2	-
ITEM Club	May*	3.2	-1.7	1.23	2.0	1.9	7.2	-20.5	-6.8
Liverpool Macro Research	May	-	-	0.84	-	-	-	-27.0	-24.0 cc
NIESR	Apr	2.7	0.6	1.10	-	1.6	7.5	-18.3	-1.8
OEF	Jun*	2.6	0.2	1.10	1.9	2.2	7.4	-18.2	-5.4
Primark WEFA	Dec	2.4	0.3	1.19	2.5	2.5	7.0	-8.0	-
EC	Apr	3.5 ff	1.0	1.62 aa	2.0	2.0	7.2	-13.4	-7.3
OECD	Jun*	-	0.5	5.80 x	-	2.6	-	-31.0	-
IMF	Apr	-	-	4.50 x	-	-	-	-30.5	-
Average of Forecasts made in last 3 months									
Independent		3.0	0.6	1.04	2.3	2.2	6.5	-19.3	-6.5
New (marked *)		3.0	0.4	1.06	2.2	2.1	6.1	-19.0	-6.8
City		3.1	0.6	1.05	2.3	2.3	6.4	-18.7	-6.4
Range of Forecasts made in last 3 months									
Highest		5.6	1.5	1.23	3.8	3.7	8.7	-8.0	3.0
Lowest		2.2	-1.7	0.80	1.0	1.0	4.7	-37.0	-21.5
HM Treasury	Mar	2¼-3¼	-	-	-	1¼-2¼	6½	-21	-5.0

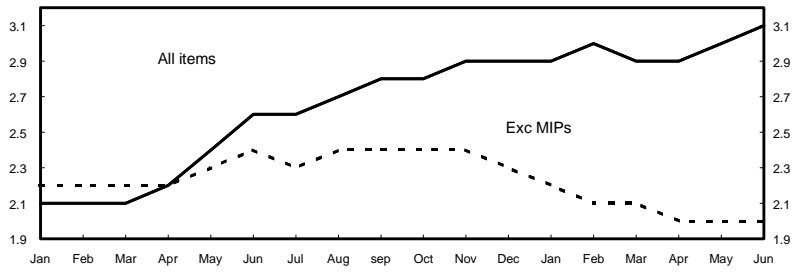
Forecasts for 2000

Independent average, January 1999 - June 2000

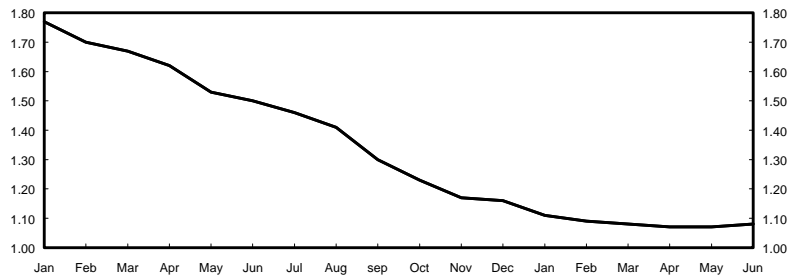
GDP growth (per cent)



Retail price inflation (Q4, per cent)



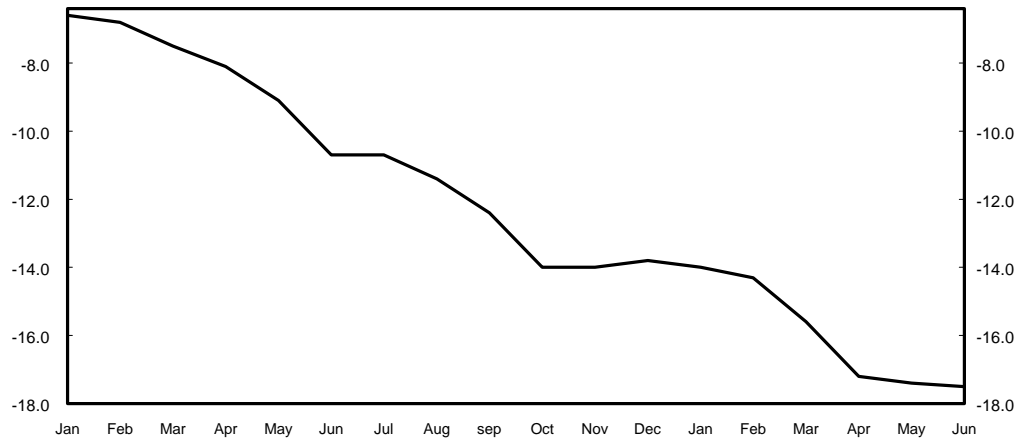
Claimant unemployment (Q4, millions)



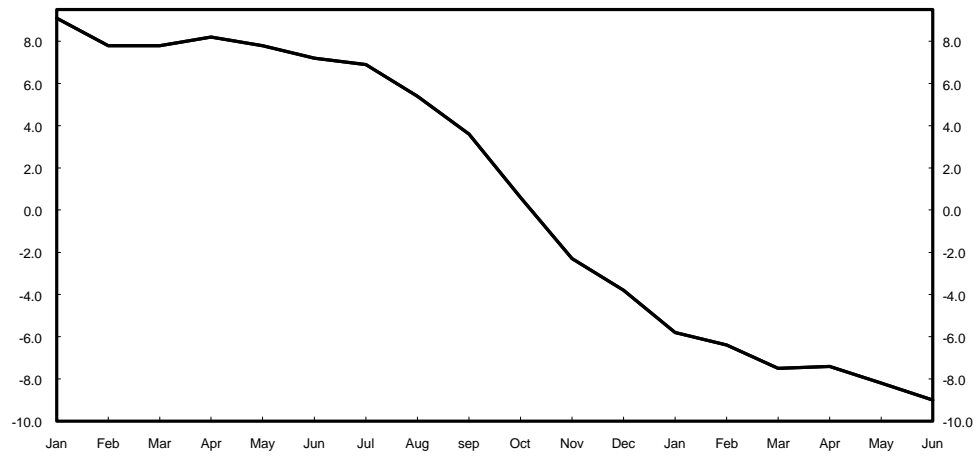
Forecasts for 2000

Independent average, January 1999 - June 2000

Current account
(£ billion)



PSNB 2000-01
(£ billion)



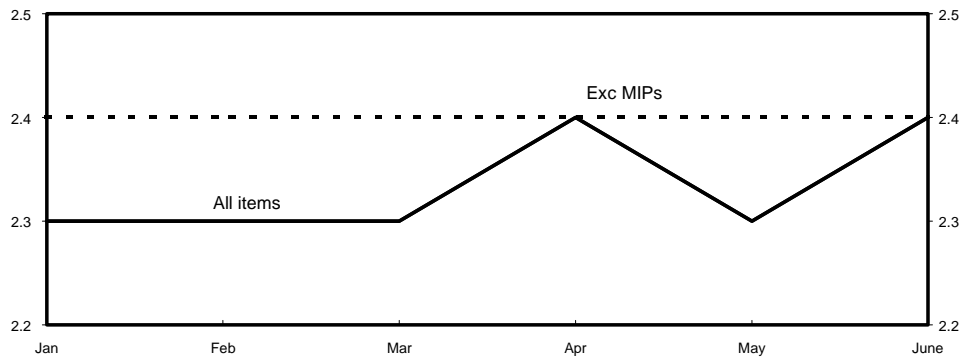
Forecasts for 2001

Independent average, January 2000 - June 2000

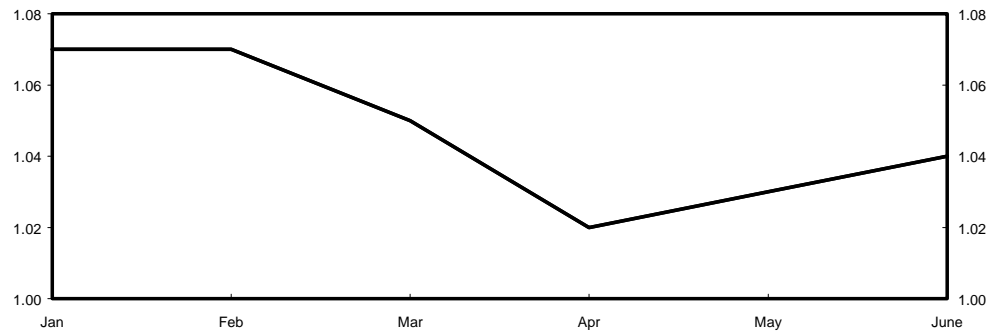
GDP growth
(per cent)



Retail price inflation
(Q4, per cent)



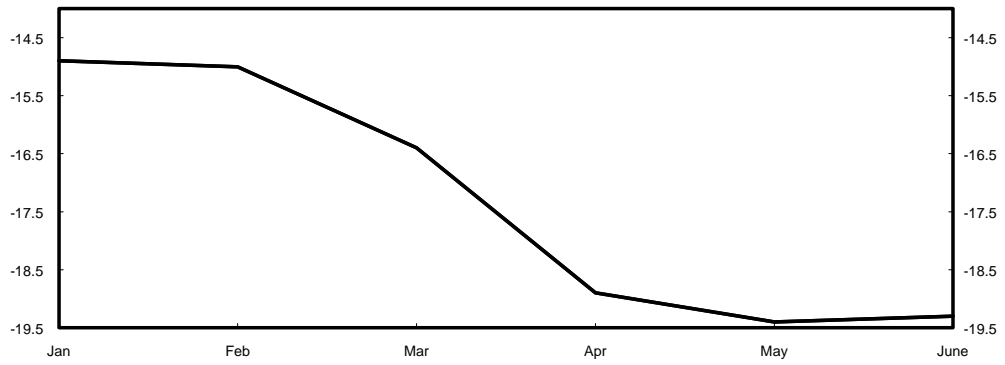
Claimant unemployment
(Q4, millions)



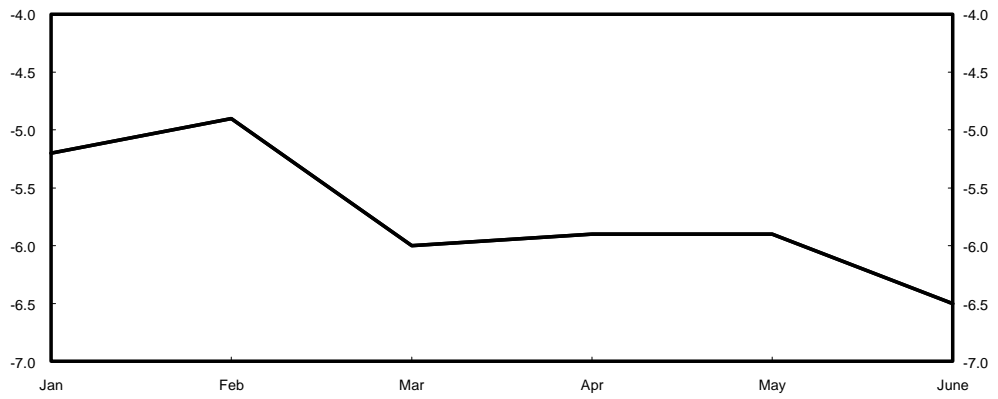
Forecasts for 2001

Independent average, January 2000 - June 2000

Current account
(£ billion)

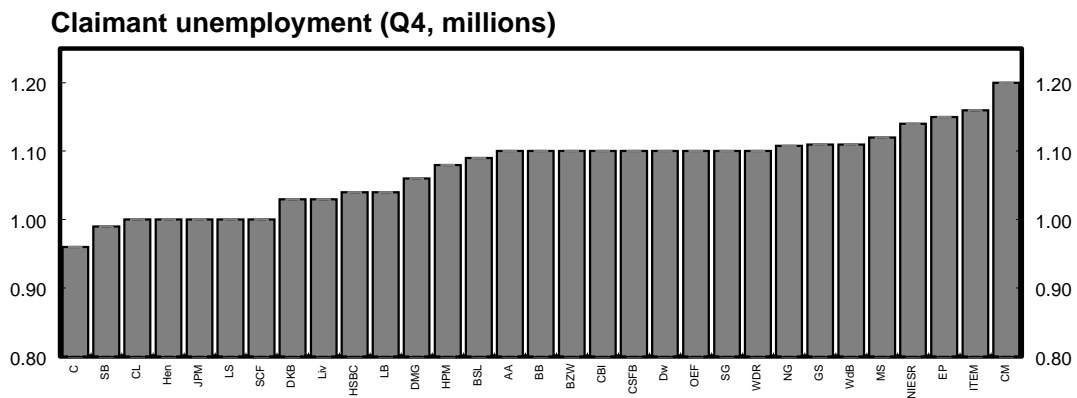
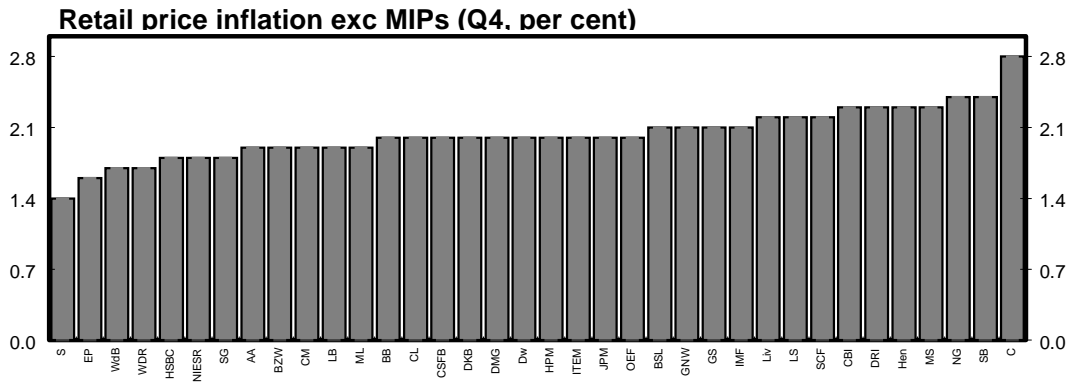
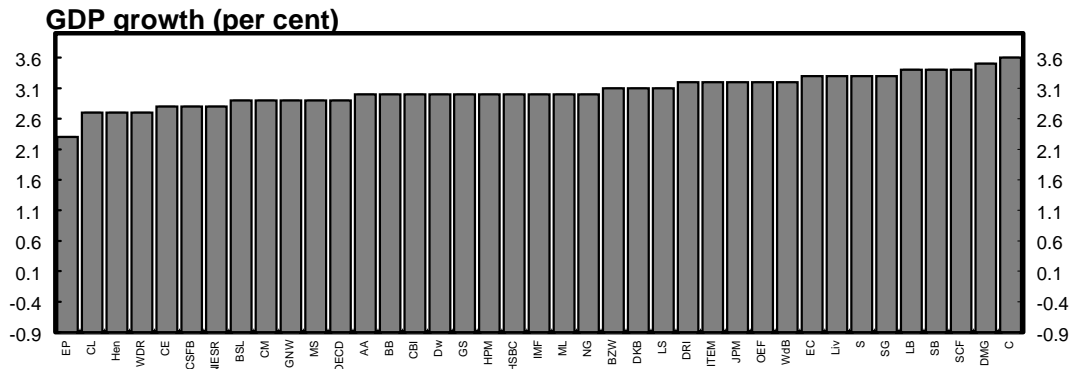


PSNB 2000-01
(£ billion)



Forecasts for 2000

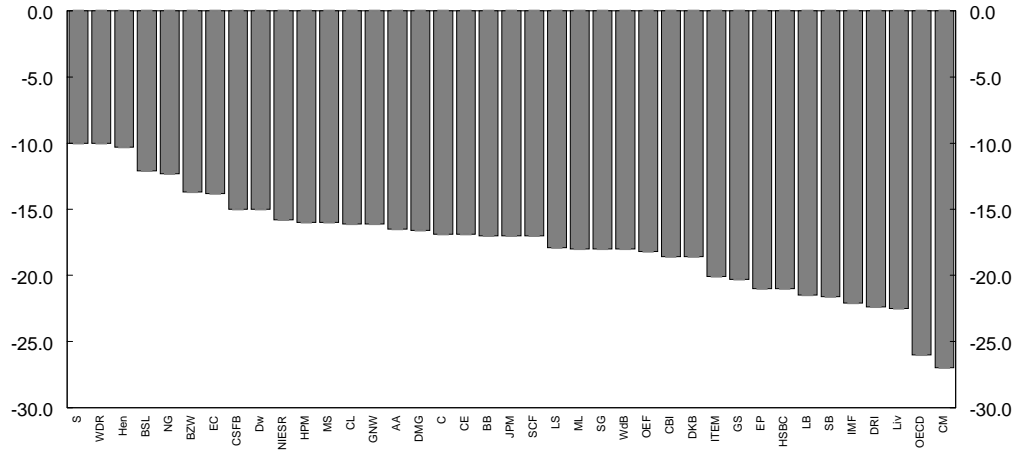
June 2000 range of forecasts (made in last 3 months)



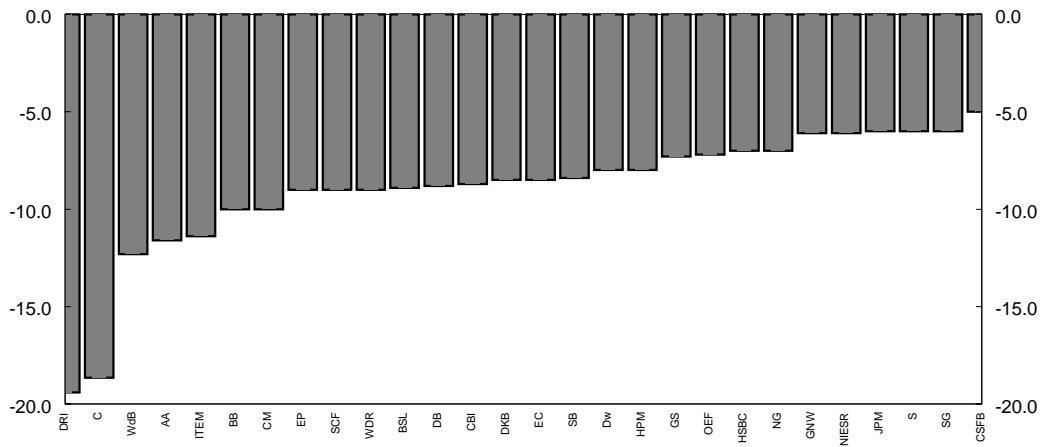
Forecasts for 2000

June 2000 range of forecasts (made in last 3 months)

Current account (£ billion)

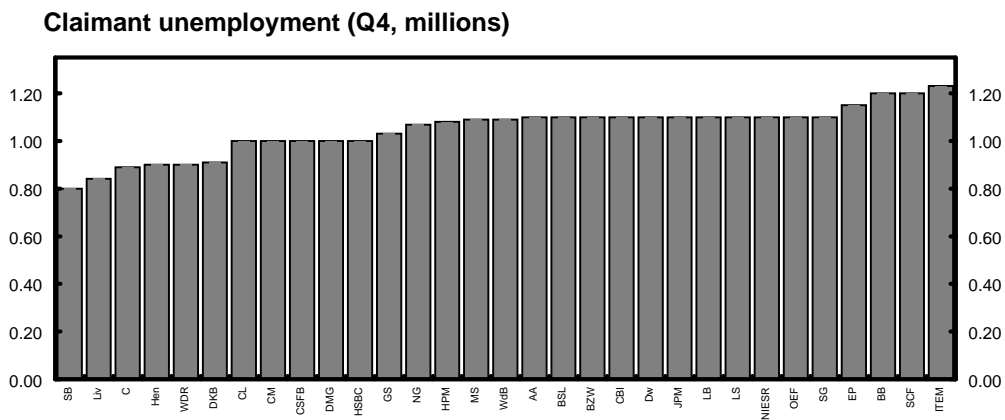
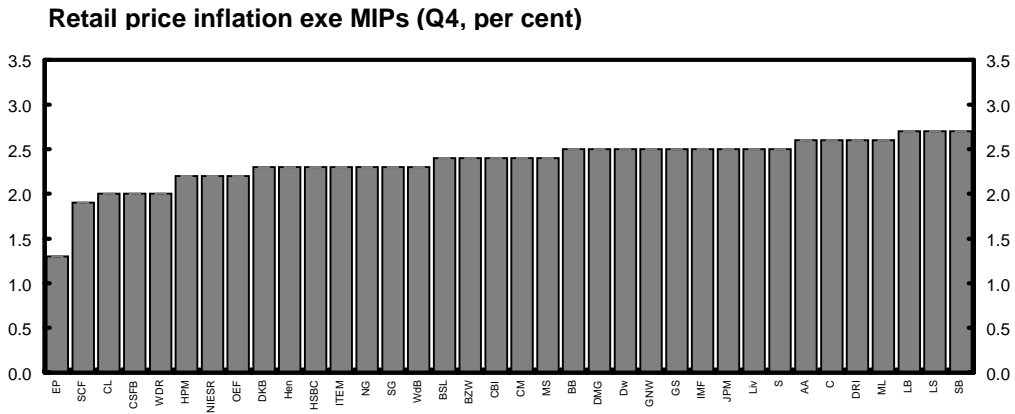
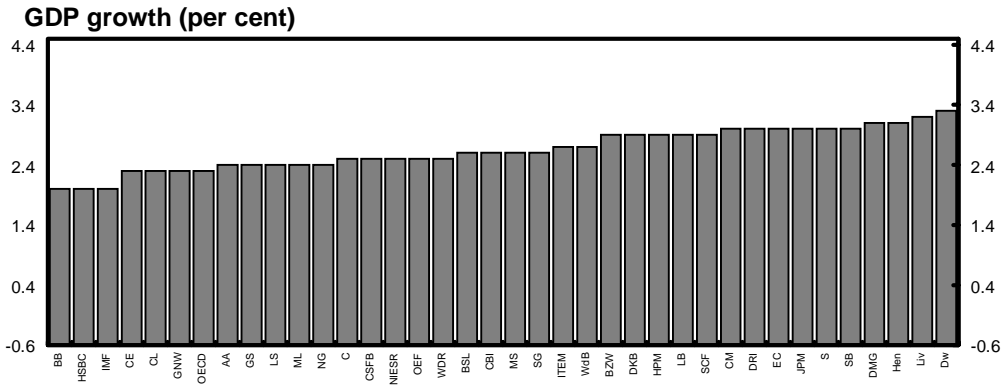


PSNB (2000 - 01, £ billion)



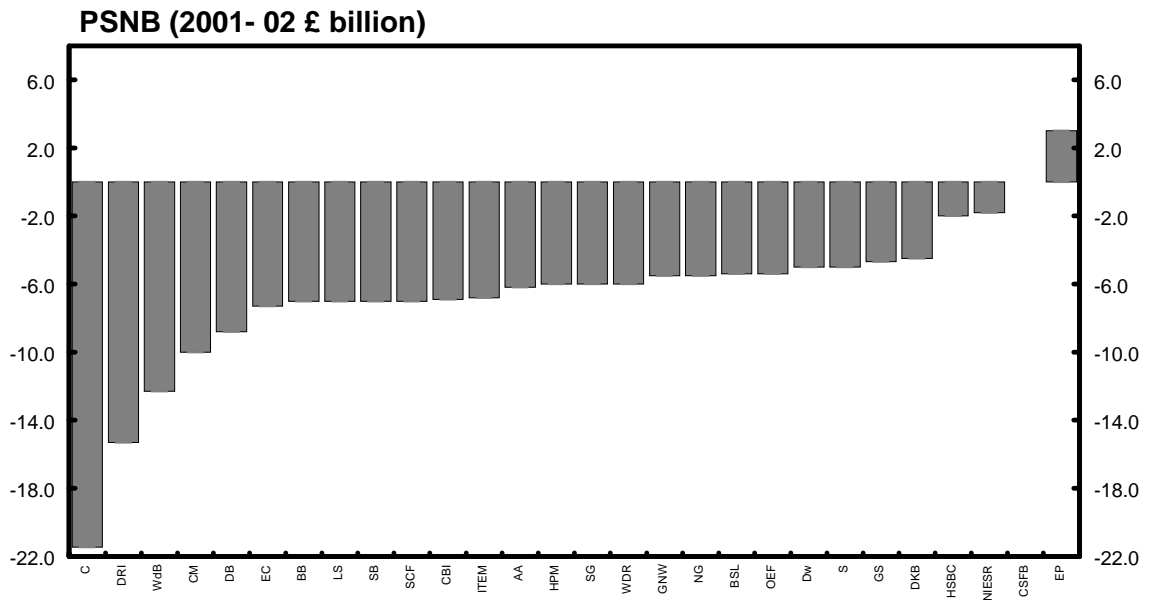
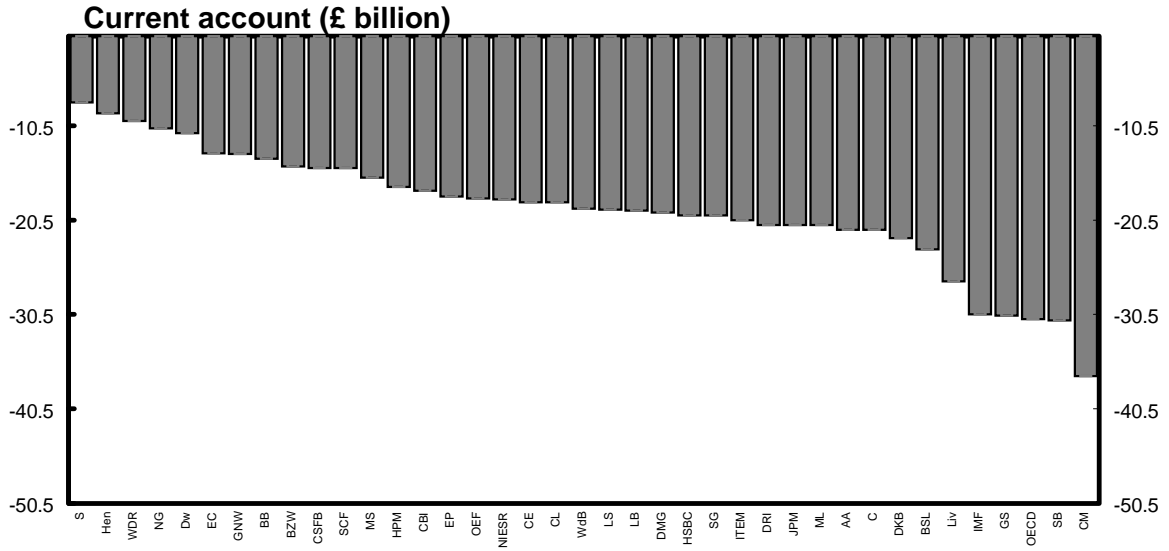
Forecasts for 2001

June 2000 range of forecasts (made in last 3 months)



Forecasts for 2001

June 2000 range of forecasts (made in last 3 months)



ANNEX 1: Forecasting institutions referred to in charts and tables:

AA:	Abn Amro
BB:	Barclays Bank
BZW:	Barclays Capital
BSL:	Business Strategies Ltd
CE:	Cambridge Econometrics
C	Charterhouse
CM:	Chase Manhattan
CBI:	Confederation of British Industry
CEBR:	Centre for Economics and Business Research Ltd
CL:	Credit Lyonnais
CSFB:	Credit Suisse First Boston
Dw:	Daiwa Europe Ltd/DIR
DB :	Deutsche Bank
DKB:	Dresdner Kleinwort Benson
DRI:	Data Resources Inc. Europe
EC	European Commission
EIU:	Economist Intelligence Unit
EP:	Economic Perspectives
GNW:	Greenwich Natwest
GS:	Goldman Sachs
Hen	Henley Forecasting Centre
HSBC:	HSBC Economics and Strategy
HPM:	Hermes Pensions Management Ltd
IMF	International Monetary Fund
ITEM:	ITEM Club
JPM	J P Morgan
LB:	Lehman Brothers
Liv:	Liverpool Mecro Research
LS:	Lombard Street Research Ltd
ML:	Merrill Lynch
MSDW:	Morgan Stanley Dean Witter
NIESR:	National Institute for Economic and Social Research
NG:	Natwest Group
NE:	Nikko Europe
NUIM:	Norwich Union Investment Management
OECD	Organisation for Economic Cooperation and Development
OEF:	Oxford Economic Forecasting
SB:	Saloman Smith Barney
S:	Schroders
SG:	Societe Generale
WDR:	Warburg Dillon Read
WLBP:	WestLB Panmure
WdB:	Williams de Broë
WEFA:	Primark WEFA

Notation used in tables:

- a: consumers' expenditure deflator
- b: underlying consumers' expenditure deflator
- c: non-durable consumption
- d: current and capital expenditure, including stockbuilding
- e: private sector investment, stockbuilding and durable consumption
- f: investment and stockbuilding combined
- g: as a percentage of GDP
- h: contribution to GDP growth - per cent
- i: hourly rate
- j: end period
- k: calendar year
- m: non-oil trade
- n: wages and salaries divided by employees in employment
- o: consumer price deflator to Q4
- p: calculated from general government financial deficit figures adjusted for privatisation proceeds
- q: forecast growth rates for Q4
- r: various definitions; refer to forecasters for details
- s: base rate
- t: billions of dollars
- u: general government current and capital expenditure plus stockbuilding
- v: average of spot price of Brent crude and Dubai light crude
- w: UK export markets
- x: claimant unemployment rate
- y: derived from the consumer price index
- z: OECD real imports of goods and services
- aa: ILO Unemployment
- bb: households only
- cc: PSNCR (Formerly PSBR)
- dd: harmonized index of consumer prices (HICP)
- ee: general government financial balance
- ff: gross disposable income deflated by implicit price of private consumption
- gg: 1990 Prices
- hh: World GDP

Contact lists:

Organisation	Contact	Telephone number
Abn Amro	Richard Iley	0171 374 7171
Barclays Bank	Mark Joint	01202 344 112
Barclays Capital	David Hillier	0171 773 4307
BSL	Neil Blake	0171 630 5959
Cambridge Econometrics	Rachel Beaven	01223 460 760
Charterhouse	Richard Jeffrey	0171 246 2472
Chase Manhattan	Adrian Schmidt	0171 777 4033
CBI	Ranjiv Mann	0171 395 8101
	Sudhir Junankar	0171 395 8100
CEBR	Solomon Peters	0171 600 6661
Credit Lyonnais	Glenn Davies	0171 214 5388
Credit Suisse First Boston	Robert Barrie	0171 888 7536
Daiwa Europe Ltd/DIR	Don Eggington	0171 597 8000
Deutsche Morgan Grenfell	Ciaran Barr	0171 545 2088
Dresdner Kleinwort Benson	Leo Doyle	0171 956 8074
DRI	Darren Rawcliffe	0181 545 6225
EC	Keith Vernon	(00 322) 299 3446
EIU	Phillip Whyte	0171 830 1287
Economic Perspectives	Peter Warburton	0171 382 8317
Goldman Sachs	Ann Terry	0171 774 1166
Greenwich Natwest	Geoffrey Dicks	0171 389 3892
Henley Centre	David Martin	0171 955 1868
Hermes Pensions Man. Ltd	James Walsh	0171 680 2144
HSBC	Jonathan Loynes	0171 336 4147
	Roger Bootle	0171 336 3888
ITEM club	John Gaster	01865 268913
J P Morgan	Danny Gabay	0171 325 5335
Lehman Brothers	Mike Dicks	0171 260 2783
Liverpool Mecro Research	Patrick Minford	01222 875728
Lombard Street Research Ltd	Stewart Robertson	0171 337 2800
Merrill Lynch	Ian Stewart	0171 772 1512
Morgan Stanley Dean Witter	Mark Miller	0171 513 6643
NIESR	Garry Young	0171 222 7665
Natwest Group	Elisabeth Hall	0171 726 1912
Norwich Union IM	Mike Collins	01603 683680
Oxford Economic Forecasting	Adrian Cooper	01865 202 828
Saloman Smith Barney	Michael Saunders	0171 721 3924
Schroders	Sharda Dean	0171 658 6439
S.G. (Societe Generale)	Brian Hilliard	0171 762 5014
Warburg Dillon Read	Darren Winder	0171 568 4412
Primark WEFA	Paul Robson	0207 5660 07963
WestLB Panmure	Stuart Weatherby	0171 860 3659
Williams de Broë	David Smith	0171 588 7511 ext 402