

HM Treasury

FORECASTS FOR THE UK ECONOMY

A comparison of independent forecasts

**Compiled by
Economic Assessment Team
September 2000**

No. 161

Please note that Forecasts for the UK Economy is a summary of published material reflecting the views of the forecasting organisations themselves and does not in any way provide new information on the Treasury's own views. It contains only a selection of forecasters, which is subject to review. No significance should be attached to the inclusion or exclusion of any particular forecasting organisation. HM Treasury accepts no responsibility for the accuracy of material published in this comparison.

Payment of the subscription fee of £75, made out to HM Treasury Votes Cash Account, should be sent with your order to Miss C T Coast-Smith, Public Enquiry Unit, HM Treasury, Room 110/2, Parliament Street, London, SW1P 3AG (Tel: 020 7270 4558), to whom subscription enquiries should also be addressed. A proforma invoice can be sent if requested.

Forecasts for the UK Economy are compiled and coordinated by Ruby Islam (020 7270 5403).

Please direct enquiries on the contents of this issue to Jamie Bird (020 7270 5404).

The next edition will be published on 18 October 2000. It will also be made available at the Treasury's internet site: <http://www.hm-treasury.gov.uk>.

FORECASTS FOR THE UK ECONOMY

A comparison of independent forecasts, September 2000

This edition of the comparison contains 22 new forecasts. The tables below summarise the average and range of independent forecasts for 2000 and 2001 and show the average of this month's new forecasts.

Forecasts for 2000	Independent ⁺				Average of new* forecasts
	Averages		September range		
	September	August	Lowest	Highest	
GDP growth (per cent)	3.0	3.0	2.5	3.3	3.0
Inflation rate (Q4: per cent)					
- RPI	3.2	3.1	2.4	4.1	3.1
- RPI exc MIPs	2.1	2.1	1.5	2.9	2.1
Claimant unemployment (Q4: mn)	1.06	1.08	1.00	1.13	1.05
Current account (, bn)	-16.9	-17.7	-27.5	-11.4	-16.7
PSNB** (2000-01: , bn)	-11.6	-10.6	-21.0	-6.0	-11.5

Forecasts for 2001	Independent ⁺				Average of new* forecasts
	Averages		September range		
	September	August	Lowest	Highest	
GDP growth (per cent)	2.7	2.6	1.5	3.6	2.6
Inflation rate (Q4: per cent)					
- RPI	2.5	2.5	1.6	3.4	2.5
- RPI exc MIPs	2.4	2.4	1.3	2.9	2.4
Claimant unemployment (Q4: mn)	1.02	1.04	0.76	1.26	1.00
Current account (, bn)	-18.3	-18.9	-28.0	-7.2	-19.2
PSNB** (2001-02: , bn)	-8.5	-7.3	-22.0	0.0	-8.4

⁺ Independent and City averages, and the range of forecasts, are based on forecasts made in the last three months (September institutions 21, August institutions 6, July institutions 7).

*Based on new forecasts received for the comparison this month

**PSNB: Public Sector Net Borrowing (Treasury forecast excluding windfall taxes and associated spending)

Note: All the averages exclude non-standard entries (see footnotes a to ff).

Forecasters & date of forecasts	2000		September 2000				Table 1			
	GDP & its components, at constant prices									
	Percentage changes on a year earlier unless stated otherwise									
		GDP	Private Consumption	Government expenditure	Fixed Investment	Change in Inventories '(£bn)	Domestic demand	Exports (goods & services)	Imports	
City forecasters										
Abn Amro	Jul	3.0	3.6	1.6	2.7	2.0	3.5	6.7	8.0	
Barclays Bank	Sep*	3.0	3.6	3.4	1.0	1.7	3.3	7.1	7.9	
Barclays Capital	Sep*	2.9	3.5	2.1	1.1	2.4	3.3	8.0	8.4	
Capital Economic	Aug	2.8	4.0	3.0	1.5	1.0	3.6	6.0	8.0	
Charterhouse	Sep*	3.3	3.9	1.3	2.1	2.1	3.5	8.1	8.3	
Chase Manhattan	Sep*	3.1	3.8	2.4	2.8	3.5	3.9	7.6	9.5	
Credit Lyonnais	Sep*	2.9	3.5	2.4	1.1	2.1	3.3	8.2	8.9	
Credit Suisse First Boston	Sep*	2.8	3.5	1.7	1.5	2.5	3.3	7.5	8.3	
Daiwa Institute of Research	Aug*	3.1	3.7	3.6	2.8	1.9	3.9	6.2	7.9	
Deutsche Bank	Sep*	3.0	3.8	2.4	1.4	3.0	3.6	7.9	9.1	
Dresdner Kleinwort Benson	Sep*	2.8	3.2	2.0	1.6	2.9	3.2	6.9	7.9	
Economic Perspectives	Sep*	2.5	3.8	1.5	-1.3	2.0	2.8	6.3	6.9	
Goldman Sachs	Sep*	3.0	3.6	2.5	1.9	1.4	3.6	7.7	8.8	
Hermes	Aug	3.0	3.6	4.1	2.7	1.2	3.8	5.8	7.5	
HSBC Econ & Strategy	Sep*	2.5	4.0	2.0	2.0	1.6	3.6	4.0	7.0	
J P Morgan	Sep*	3.2	3.6	1.4	2.5	1.5	3.5	7.0	7.7	
Lehman Brothers	Sep*	3.1	3.8	2.0	1.5	2.8	3.6	8.2	8.9	
Lombard St	Sep*	3.3	3.3	4.5	4.0	1.5	3.9	7.0	8.5	
Merrill Lynch	Jul	3.0	3.5	-	4.0	-	-	-	-	
Morgan Stanley Dean Witter	Aug	2.9	3.4	3.8	2.0	0.6	3.4	7.6	9.2	
Natwest Group	Apr	3.0	3.2	3.5	4.2	1.3	3.7	4.9	6.6	
RBSFM	Jul	2.8	3.3	2.2	2.2	1.7	3.2	6.4	7.5	
Salomon S Barney/Citibank	Sep*	3.2	3.7	2.1	2.6	1.8	3.6	8.3	9.0	
Schroders	Sep*	3.3	3.7	-	4.3	-	3.7	6.3	7.8	
S.G.	Apr	3.3	3.2	4.0	3.3	1.7	4.0	5.5	5.4	
Standard Chartered	Apr	3.4	3.8	3.7	6.0	2.0	4.5	3.8	6.8	
Warburg Dillon Read	Sep*	2.9	3.6	1.3	1.6	3.8	3.1	6.9	7.1	
WestLB Panmure	Mar	3.7	4.0	2.5	5.8	-1.9	3.9	7.3	7.4	
Williams de Broe	Sep*	3.2	3.7	2.6	3.1	2.8	3.9	7.1	8.7	
Non-City forecasters										
BSL	Sep*	2.9	3.6	2.1	0.8	3.2	3.3	7.9	8.6	
Cambridge Econ	Jun	2.8	3.6	3.5	3.2	0.4	3.7	5.0	7.3	
CBI	Jul	3.0	3.5	4.0	2.8	-0.9	3.5	5.1	6.2	
CEBR	Jun	2.9	2.8	2.9	4.7	0.1	3.8	7.3	8.9	
DRI	Jul	3.1	3.4	4.0	3.5	1.5 gg	4.2	7.0	7.6	
EIU	Jan	2.9	3.5	2.1	1.5	1.6	3.0	5.9	5.6	
Henley	Aug	3.1	3.6	2.9	1.9	3.1	3.7	5.8	7.2	
ITEM Club	Aug	3.1	3.7	3.8	2.8	0.4	3.5	8.1	10.0	
Liverpool Macro Research	Sep*	2.7	2.0 c	3.9 d	2.5 e	-	-	-	-	
NIESR	Jul	3.2	3.6	2.0	3.3	3.0	3.8	6.9	8.3	
OEF	Sep*	3.1	3.7	3.6	2.1	2.2	3.8	6.9	8.5	
Primark WEFA	Jul	2.8	3.6	1.8	1.7	1.8	3.3	6.3	7.0	
EC	Apr	3.3	3.1	3.1	5.2	-0.4	3.6	6.9	7.3	
OECD	Jun	2.9	3.3	3.8	3.8	-	3.5	8.5	9.8	
IMF	Apr	3.0	2.6	2.8	3.3	0.4	2.7	6.2	5.8	
Average of Forecast made in last 3 months										
Independent		3.0	3.6	2.6	2.2	2.0	3.5	7.0	8.1	
New (marked *)		3.0	3.6	2.3	1.9	2.3	3.5	7.2	8.3	
City		3.0	3.6	2.4	2.1	2.1	3.5	7.0	8.2	
Range of Forecasts made in last 3 months										
Highest		3.3	4.0	4.5	4.3	3.8	4.2	8.3	10.0	
Lowest		2.5	3.2	1.3	-1.3	-0.9	2.8	4.0	6.2	
HM Treasury	Mar	2 ³ / ₄ -3 ¹ / ₄ 3 ¹ / ₂ -3 ³ / ₄		4	3 ¹ / ₄ -3 ¹ / ₄		1/4	3 ³ / ₄ -4	5 ¹ / ₂ -6	7 ³ / ₄ -8 ¹ / ₄

Forecasters & date of forecasts	2000				September 2000		Table 2		
	Inflation and monetary indicators				Sterling index(Q4)	3- month interest rate(Q4,%)	Oil price \$	M0 (2000-1)	M4 (2000-1)
	Percentage changes on a year earlier unless stated otherwise								
		RPI (Q4)	RPI exc MIPs (Q4)	Average earnings					
City forecasters									
Abn Amro	Jul	3.2	2.0	4.9	104.5	6.35	26.0	6.5	5.8
Barclays Bank	Sep*	3.3	2.2	4.5	-	6.10	-	6.0	5.0
Barclays Capital	Sep*	3.3	2.1	4.6	107.6	6.40	-	-	-
Capital Economic	Aug	2.9	2.0	4.7	102.0	6.00	24.0	7.0	5.0
Charterhouse	Sep*	4.1	2.9	4.7	102.1	6.78	-	6.8	8.8
Chase Manhattan	Sep*	2.4	1.8	4.9	104.8	6.60	29.4	-	-
Credit Lyonnais	Sep*	2.9	1.9	4.7	103.5	6.25	28.0	-	-
Credit Suisse First Boston	Sep*	3.0	2.0	4.9	-	6.25	-	7.8	5.4
Daiwa Institute of Research	Aug*	3.4	2.1	5.0	106.1	6.30	27.5	-	-
Deutsche Bank	Sep*	3.2	2.0	4.5	104.0	6.50	28.0	6.7	6.7
Dresdner Kleinwort Benson	Sep*	2.8	2.0	4.7	104.5	6.00	-	-	-
Economic Perspectives	Sep*	2.6	1.6	4.8	106.0	6.00	26.0	6.5	5.8
Goldman Sachs	Sep*	3.0	2.1	4.8	101.0	6.50	28.4	5.0 jk	9.1
Hermes	Aug	3.3	2.0	4.9	104.2	6.40	-	-	-
HSBC Econ & Strategy	Sep*	2.9	2.0	4.8	105.0	5.80	26.0	6.5	4.0
J P Morgan	Sep*	3.6	2.3	5.2	-	6.70	-	-	-
Lehman Brothers	Sep*	3.0	1.9	4.8	104.0	6.25	27.9	7.5	6.0
Lombard St	Sep*	3.2	2.2	5.1	105.0	6.50	26.0	-	7.1
Merrill Lynch	Jul	-	1.9	4.9	-	6.25	-	-	-
Morgan Stanley Dean Witter	Aug	3.3	2.3	4.6	104.0	6.70	-	-	-
Natwest Group	Apr	3.1	2.4	5.8	103.0	6.80	22.0	6.5	5.5
RBSFM	Jul	3.3	2.2	5.3	104.0	6.25	25.0	-	-
Salomon S Barney/Citibank	Sep*	3.6	2.5	4.8	104.0	6.60	27.0	-	-
Schroders	Sep*	2.5	1.5	4.5	-	6.30	-	-	-
S.G.	Apr	-	1.8	5.5	103.0	6.90	27.0	10.0	6.0
Standard Chartered	Apr	2.5	2.2	4.2	97.0	6.50	23.0	13.0	7.0
Warburg Dillon Read	Sep*	3.1	2.1	4.7	-	6.00	26.5	6.6	6.9
WestLB Panmure	Mar	2.4	2.2	5.1	115.3	6.80	-	5.3	7.0
Williams de Broe	Sep*	3.1	2.3	4.6	106.4	6.10	28.9	5.8	7.9
Non-City forecasters									
BSL	Sep*	3.2	2.2	4.6	104.0	6.00	26.4	-	-
Cambridge Econ	Jun	3.0 k	2.1 k	5.4	107.8 k	6.20 ks	24.0	-	-
CBI	Jul	3.4	2.3	5.6	106.0	6.30 s	23.4	-	-
CEBR	Jun	2.6	1.8	5.6	102.1	6.20 s	27.0	-	-
DRI	Jul	2.6	2.4	5.0	105.0	6.35	28.0	1.3	10.7
EIU	Jan	2.8	2.1	4.6	103.9	6.25	20.0	-	-
Henley	Aug*	3.3	2.4	4.9	-	6.50	-	-	-
ITEM Club	Aug	3.2	2.0	5.1	104.0	6.30	28.0	4.5 k	8.1
Liverpool Macro Research	Sep*	-	2.3	4.9	105.8	6.10	-	-	-
NIESR	Jul	3.3	1.8	5.1	104.8	6.40	26.6	6.0	9.5
OEF	Sep*	3.4	2.1	4.6	103.1	6.40	26.5	6.7	7.7
Primark WEFA	Jul	3.4	2.1	5.0	-	6.50	-	-	-
EC	Apr	-	-	5.0	-	-	24.2	-	-
OECD	Jun	-	-	-	-	6.60	-	-	-
IMF	Apr	-	2.1	4.7 i	-	-	-	-	-
Average of Forecasts made in last 3 months									
Independent		3.2	2.1	4.8	104.4	6.32	26.8	6.3	6.8
New (marked *)		3.1	2.1	4.8	104.5	6.30	27.3	6.7	6.5
City		3.1	2.1	4.8	104.4	6.32	27.0	6.7	6.2
Range of Forecasts made in last 3 months									
Highest		4.1	2.9	5.6	107.6	6.8	29.4	7.8	10.7
Lowest		2.4	1.5	4.5	101.0	5.8	23.4	1.3	4.0
HM Treasury	Mar	-	2¼	-	-	-	-	-	-

2000

September 2000

Table 3

Other variables

Percentage changes on a year earlier unless stated otherwise

Forecasters & dates of forecasts		RHDI	Employment	Claimant unemp. (Q4-mns)	Industrial production	Manufg output	World Trade	Current account (£bn)	PSNB (£bn 00-01)	PSNB (£bn -1999-00)
City forecasters										
Abn Amro	Jul	2.6	0.6	1.10	1.6	1.3	8.9	-12.3	-15.3	
Barclays Bank	Sep*	3.5	0.7	1.05	-	1.3	-	-17.0	-12.0	-17.3
Barclays Capital	Sep*	2.5	0.7	1.07	1.7	1.4	-	-13.9	-23.0 cc	-8.7 cc
Capital Economic	Aug	3.0	0.5	1.10	1.0	1.0	7.0	-19.0	-10.0	
Charterhouse	Sep*	3.2	1.2	1.01	1.7	1.5	-	-15.4	-19.0	
Chase Manhattan	Sep*	3.7	0.5	1.09	1.2	1.2	8.5	-14.0	-10.0	-15.0
Credit Lyonnais	Sep*	-	-	1.00	1.5	1.1	7.0	-18.1	-24.4 cc	
Credit Suisse First Boston	Sep*	3.0	0.3	1.00	2.3	-	-	-15.0	-30.0 cc	
Ciwiwa Institute of Research	Aug*	2.7	0.5	1.10	-	-	-	-17.2	-15.0	-17.3
Deutsche Bank	Sep*	2.6	0.8	1.02	1.7	1.0	-	-15.0	-30.0 cc	-8.7 cc
Dresdner Kleinwort Benson	Sep*	2.0	0.8	1.02	1.4	1.2	-	-19.4	-10.9	
Economic Perspectives	Sep*	2.7	0.2	1.10	1.5	1.3	6.5	-23.0	-10.0	-16.8
Goldman Sachs	Sep*	2.8	0.8	1.09	1.9	1.7	-	-15.0	-9.7	-17.3
Hermes	Aug	2.6	0.5	1.07	1.1	-	-	-16.6	-8.4	
HSBC Econ & Strategy	Sep*	3.0	0.4	1.12	0.6	0.6	8.1	-19.0	-10.0	-17.4
J.P. Morgan	Sep*	-	-	1.10	1.4	1.5	-	-13.7	-6.0	-12.0
Lehman Brothers	Sep*	3.5	1.5	1.04	1.6	1.7	10.6	-27.5	-10.0	
Morgan Stanley	Sep*	3.0	1.0	1.00	-	-	-	-13.8	-29.0 cc	
Merrill Lynch	Jul	-	-	-	-	1.8	-	-18.0	-	
Morgan Stanley Dean Witter	Aug	2.5	1.2	1.10	1.3	1.2	-	-18.0	-8.0	-9.0 cc
Natwest Group	Apr	5.4	-	1.11	0.7	1.0	-	-12.3	-7.0	
RBSFM	Jul	2.3	1.1	1.68 aa	1.2	1.2	4.7	-16.0	-8.0	-17.3
Salomon S Barney/Citibank	Sep*	3.4	0.6	1.01	1.6	1.3	-	-22.0	-8.2	-17.3
Schroders	Sep*	-	-	-	2.5	2.5	-	-19.0	-6.0	-17.3
S.G.	Apr	3.6	0.5	1.10	1.1	1.3	6.5	-18.0	-6.0	-12.0
Standard Chartered	Apr	-	1.2	1.00	3.0	2.7	-	-17.0	-9.0	
Warburg Dillon Read	Sep*	-	1.0	1.10	1.8	1.5	-	-12.0	-20.0	-12
VestLB Panmure	Mar	3.5	1.8	1.00	2.6	2.7	-	-11.0	-7.00	
Williams de Broe	Sep*	-	0.7	1.07	1.5	1.2	10.4	-17.2	-16.1	-
Non-City forecasters										
BSL	Sep*	2.9	0.7	1.06	1.2	1.1	8.8	-11.4	-12.5	-17.3
Cambridge Econ	Jun	3.2	1.0	1.30 k	1.5	1.3	3.6 hh	-16.9	2.7 kcc	-6.3 kcc
CEBI	Jul	3.6	0.9	1.10	0.9	0.5	7.0	-18.6	-8.7	-15
CEBR	Jun	3.5	1.4	1.00	-	1.1	-	-17.0	-38.6 cc	- cc
ERI	Jul	4.0	1.0	-	2.0	-	-	-22.0	-21.0	-17.4
EU	Jan	4.5	0.5	1.06	2.1	1.9	6.7	-9.3	27.4 eek	
Finley	Aug	3.0	0.8	1.10	-	1.0	-	-17.4	-	
TEM Club	Aug	-	0.9	1.64 aa	1.7	1.5	10.7	-17.8	-12.0	-11.1
Liverpool Macro Research	Sep*	-	-	1.05	-	-	-	-13.8	32.5 cc	-17.3 cc
NIESR	Jul	3.0	0.8	1.05	-	1.5	10.1	-14.6	-10.1	-17.3
DEF	Sep*	2.7	0.5	1.00	1.2	1.2	11.1	-15.2	-9.3	-8.7
Primark WEFA	Jul	3.2	0.4	1.13	1.7	1.6	8.9	-16.1	-16.0	
EC	Apr	2.7 ff	1.0	1.65 aa	2.3	2.4	8.1	-13.8	-8.5	
OECD	Jun	-	0.9	5.70 x	-	2.0	-	-26.0	-	
VIF	Apr	-	-0.3	4.30 x	-	-	-	-22.1	-	
Average of Forecasts made in last 3 months										
Independent		3.0	0.7	1.06	1.5	1.3	8.6	-16.9	-11.6	
Low (marked *)		3.0	0.7	1.05	1.6	1.4	8.9	-16.7	-11.5	
City		2.9	0.7	1.06	1.5	1.4	8.0	-17.1	-11.2	
Range of Forecasts made in last 3 months										
Highest		4.0	1.5	1.1	2.5	2.5	11.1	-11.4	-6.0	
Lowest		2.0	0.2	1.0	0.6	0.5	4.7	-27.5	-21.0	
HM Treasury	Mar	3 ³ / ₄	-	-	-	1 ³ / ₄ -2 ¹ / ₄	7.0	-20 ¹ / ₂	-6	

2001

September 2000

Table 4

GDP & its components, at constant prices

Percentage changes on a year earlier unless stated otherwise

Forecasters & date of forecasts		2001		September 2000		Change in Inventories (£bn)	Domestic demand	Exports (goods & services)	Imports
		GDP	Private Consumption	Government expenditure	Fixed investment				
City forecasters									
Abn Amro	Jul	2.6	2.5	4.0	5.1	0.3	3.0	5.2	5.8
Barclays Bank	Sep*	2.0	2.2	3.5	0.5	0.5	2.1	5.7	5.8
Barclays Capital	Sep*	2.9	2.6	4.3	3.6	2.0	3.0	4.8	4.9
Capital Economic	Aug	2.5	3.0	4.0	2.5	0.6	3.0	3.5	5.0
Charterhouse	Sep*	2.8	3.2	2.7	3.7	0.0	2.9	5.5	5.5
Chase Manhattan	Sep*	3.0	3.4	4.0	9.4	4.5	4.7	6.1	10.1
Credit Lyonnais	Sep*	2.3	2.6	4.0	3.9	0.3	2.8	5.6	6.7
Credit Suisse First Boston	Sep*	2.5	2.8	2.6	4.1	1.2	2.8	7.3	7.5
Daiwa Institute of Research	Aug*	2.7	2.6	4.8	5.1	0.3	3.3	5.2	6.4
Deutsche Bank	Sep*	3.0	3.3	4.8	3.3	3.3	3.6	6.2	7.1
Dresdner Kleinwort Benson	Sep*	2.8	2.7	3.8	3.3	1.2	2.7	5.1	4.8
Economic Perspectives	Sep*	1.5	2.7	2.6	-2.7	2.4	1.8	4.2	4.5
Goldman Sachs	Sep*	2.5	2.7	3.9	6.0	1.1	3.5	5.7	8.2
Hermes	Aug	3.3	2.6	4.3	5.7	0.9	3.4	6.6	6.4
HSBC Econ & Strategy	Sep*	2.0	3.0	4.0	3.0	0.4	3.0	1.5	4.5
J P Morgan	Sep*	3.0	3.0	4.0	4.2	0.6	3.2	3.9	4.2
Lehman Brothers	Sep*	3.1	3.7	4.3	4.1	1.5	3.7	6.5	7.6
Lombard St	Sep*	2.7	2.4	3.5	3.0	2.2	2.8	5.5	5.5
Merrill Lynch	Jul	2.4	2.6	-	4.0	-	-	-	-
Morgan Stanley Dean Witter	Aug	2.6	2.6	4.2	3.2	-0.2	2.8	5.9	6.1
Natwest Group	Apr	2.4	2.1	3.2	2.8	1.7	2.4	5.1	4.4
RBSFM	Jul	2.4	2.3	4.0	2.7	2.0	2.6	4.6	4.9
Salomon S Barney/Citibank	Sep*	3.2	3.0	5.6	4.7	0.8	3.7	7.5	8.2
Schroders	Sep*	3.2	3.0	-	6.4	-	3.8	4.1	5.6
S.G.	Apr	2.6	2.8	3.6	2.9	2.0	3.0	5.1	5.5
Standard Chartered	Apr	2.9	3.0	4.0	5.0	2.3	3.1	4.2	5.0
Warburg Dillon Read	Sep*	2.7	2.9	2.5	2.9	3.8	2.7	4.9	4.7
WestLB Panmure	Mar	3.8	3.6	2.4	7.1	-1.9	4.0	6.4	6.3
Williams de Broe	Sep*	2.6	2.5	6.6	4.0	2.6	3.5	3.4	5.8
Non-City forecasters									
BSL	Sep*	2.1	2.7	4.0	4.1	3.1	3.2	7.4	8.1
Cambridge Econ	Jun	2.3	2.4	3.1	2.8	0.6	2.6	4.5	5.0
CBI	Jul	2.6	2.4	3.0	3.2	1.9	3.0	4.6	5.4
CEBR	Jun	1.9	1.9	3.0	4.5	0.8	2.7	6.5	8.1
DRI	Jul	3.0	3.1	2.9	3.0	1.1 gg	3.2	7.2	6.8
EIU	Jan	2.1	2.3	1.9	3.0	2.2	2.4	5.7	6.0
Henley	Aug	2.7	2.6	4.6	3.8	2.3	3.1	3.8	4.7
ITEM Club	Aug	2.6	2.6	3.4	5.5	0.0	3.3	6.6	8.0
Liverpool Macro Research	Sep*	2.7	0.6 c	5.7 d	1.2 e	-	-	-	-
NIESR	Jul	3.6	2.9	4.5	5.2	3.2	3.6	7.6	7.0
OEF	Sep*	2.7	2.4	4.8	4.8	2.9	3.4	5.8	7.2
Primark WEFA	Jul	2.7	2.3	4.1	3.6	1.2	2.8	5.7	5.5
EC	Apr	3.0	2.6	3.5	4.0	-0.4	3.0	6.1	5.7
OECD	Jun	2.3	2.6	3.2	3.4	-	2.9	6.7	7.7
IMF	Apr	2.0	1.8	2.7	2.9	-0.2	2.1	4.9	4.4
Average of Forecasts made in last 3 months									
Independent		2.7	2.8	4.0	3.9	1.5	3.1	5.4	6.2
New (marked *)		2.6	2.8	4.0	3.9	1.7	3.2	5.3	6.3
City		2.7	2.8	4.0	3.8	1.4	3.1	5.2	6.1
Range of Forecasts made in last 3 months									
Highest		3.6	3.7	6.6	9.4	4.5	4.7	7.6	10.1
Lowest		1.5	2.2	2.5	-2.7	-0.2	1.8	1.5	4.2
HM Treasury	Mar	2¼-2¾	'2-2½	2¾	3¾-4¼	0	2½-3	5½-6	5½-6

Inflation and monetary indicators

Percentage changes on a year earlier unless stated otherwise

Forecasters & date of forecasts		RPI (Q4)	RPI exc MIPs (Q4)	Average earnings	Sterling 3-month interest index(Q4)	Oil price(\$)	M0 (2001-2002)	M4	
City forecasters									
Abn Amro	Jul	3.3	2.9	5.0	101.7	6.80	22.0	6.2	8.6
Barclays Bank	Sep*	2.5	2.5	4.2	-	6.00	-	5.0	5.0
Barclays Capital	Sep*	2.4	2.5	4.3	106.6	6.35	-	-	-
Capital Economic	Aug	1.8	2.1	4.5	97.0	5.50	18.0	6.0	6.0
Charterhouse	Sep*	3.0	2.7	5.2	97.9	6.78	-	6.7	8.3
Chase Manhattan	Sep*	3.4	2.3	4.9	103.7	7.30	28.0	-	-
Credit Lyonnais	Sep*	2.0	2.2	4.6	100.0	5.75	25.0	-	-
Credit Suisse First Boston	Sep*	2.3	2.0	4.5	-	6.25	-	5.0	4.0
Daiwa Institute of Research	Aug*	3.0	2.6	5.0	102.5	6.30	23.8	-	-
Deutsche Bank	Sep*	2.5	2.5	4.6	102.5	6.20	20.0	5.5	6.0
Dresdner Kleinwort Benson	Sep*	2.0	2.2	4.8	103.0	6.10	-	-	-
Economic Perspectives	Sep*	1.6	1.3	4.5	100.0	5.50	22.0	5.0	6.5
Goldman Sachs	Sep*	3.1	2.5	4.6	95.0	6.40	25.0	5.5 jk	8.7 j
Hermes	Aug	2.6	2.2	4.6	100.7	6.50	-	-	-
HSBC Econ & Strategy	Sep*	1.7	2.3	4.5	101.5	5.00	22.0	6.0	6.0
J P Morgan	Sep*	3.0	2.7	5.0	-	7.20	-	-	-
Lehman Brothers	Sep*	2.9	2.7	5.0	101.0	6.75	22.9	4.1	5.6
Lombard St	Sep*	2.5	2.8	5.4	98.0	7.00	27.0	-	6.7
Merrill Lynch	Jul	-	2.6	4.6	-	5.75	-	-	-
Morgan Stanley Dean Witter	Aug	2.4	2.4	4.6	101.8	6.40	-	-	-
Natwest Group	Apr	1.9	2.3	4.3	99.5	6.00	19.0	6.0	6.0
RBSFM	Jul	2.6	2.6	4.6	99.9	6.08	23.0	-	-
Salomon S Barney/Citibank	Sep*	3.2	2.5	5.5	101.0	7.20	27.0	-	-
Schroders	Sep*	2.4	2.4	4.2	-	6.30	-	-	-
S.G.	Apr	-	2.3	5.0	98.0	5.50	23.5	8.5	7.0
Standard Chartered	Apr	2.7	1.9	3.8	92.0	6.00	20.0	9.0	5.0
Warburg Dillon Read	Sep*	1.7	2.0	4.5	-	5.50	21.5	6.0	7.5
WestLB Panmure	Mar	2.5	2.3	4.9	114.0	6.80	-	6.0	6.8
Williams de Broe	Sep*	2.8	2.8	4.9	104.7	6.50	31.5	4.5	9.2

Non-City forecasters

BSL	Sep*	2.2	2.1	5.1	102.5	6.00	21.8	-	-
Cambridge Econ	Jun	2.3 k	2.4 k	4.6	107.4 k	5.90 ks	24.0	-	-
CBI	Jul	2.5	2.4	5.2	103.0	6.30 s	20.0	-	-
CEBR	Jun	3.1	2.4	5.5	100.2	6.50 s	28.8	-	-
DRI	Jul	2.8	2.6	5.2	102.3	6.25	24.0	2.3	8.1
EIU	Jan	2.4	2.5	4.5	103.5	5.75	17.8	-	-
Henley	Aug	2.2	2.2	4.0	-	6.00	-	-	-
ITEM Club	Aug	2.5	2.3	5.1	99.0	6.10	26.0	2.0 k	8.4 l
Liverpool Macro Research	Sep*	-	2.4	4.2	106.1	6.00	-	-	-
NIESR	Jul	3.0	2.4	5.4	103.9	6.60	25.1	6.0	10.4
OEF	Sep*	2.6	2.2	4.8	97.6	6.30	23.8	7.1	7.1
Primark WEFA	Jul	2.2	2.4	4.1	-	5.75	-	-	-
EC	Apr	-	-	4.7	-	-	21.2	-	-
OECD	Jun	-	-	-	-	7.00	-	-	-
IMF	Apr	-	2.5	4.1 i	-	-	-	-	-

Average of Forecasts made in last 3 months

Independent		2.5	2.4	4.7	101.3	6.25	23.8	5.4	7.0
New (marked *)		2.5	2.4	4.7	101.4	6.30	24.4	5.5	6.5
City		2.5	2.4	4.7	101.0	6.30	23.9	5.5	6.6

Range of Forecasts made in last 3 months

Highest		3.4	2.9	5.5	106.6	7.30	31.5	7.1	10.4
Lowest		1.6	1.3	4.0	95.0	5.00	18.0	2.3	4.0

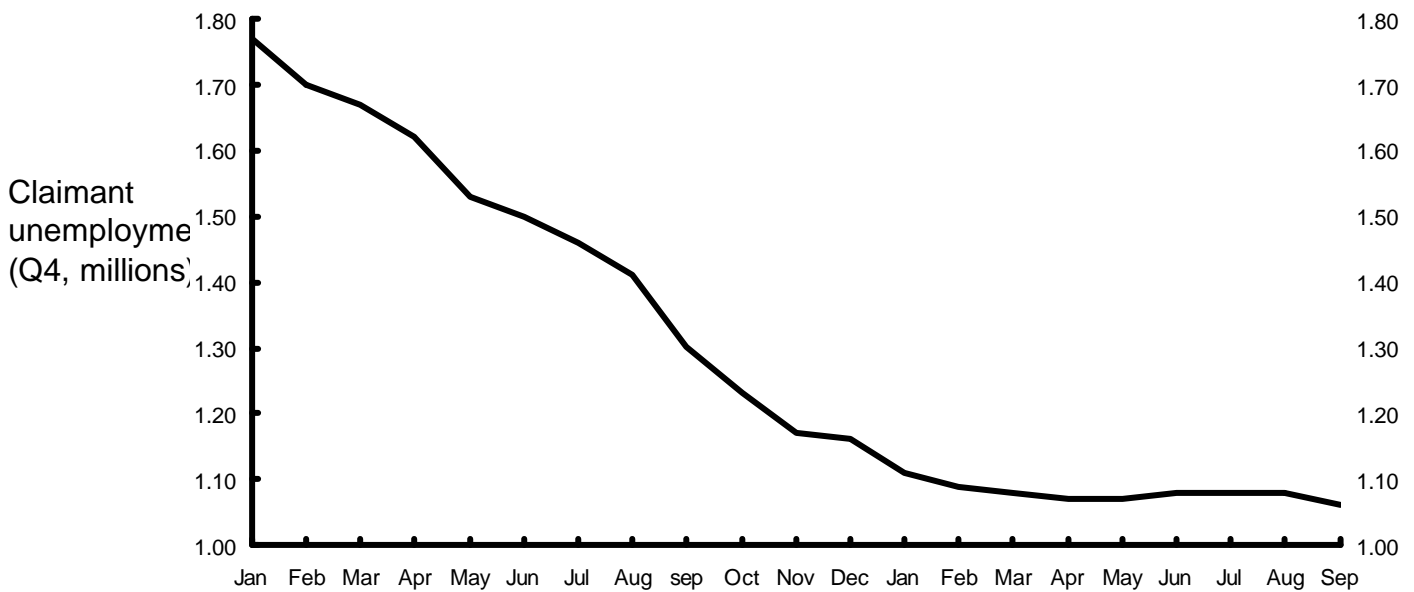
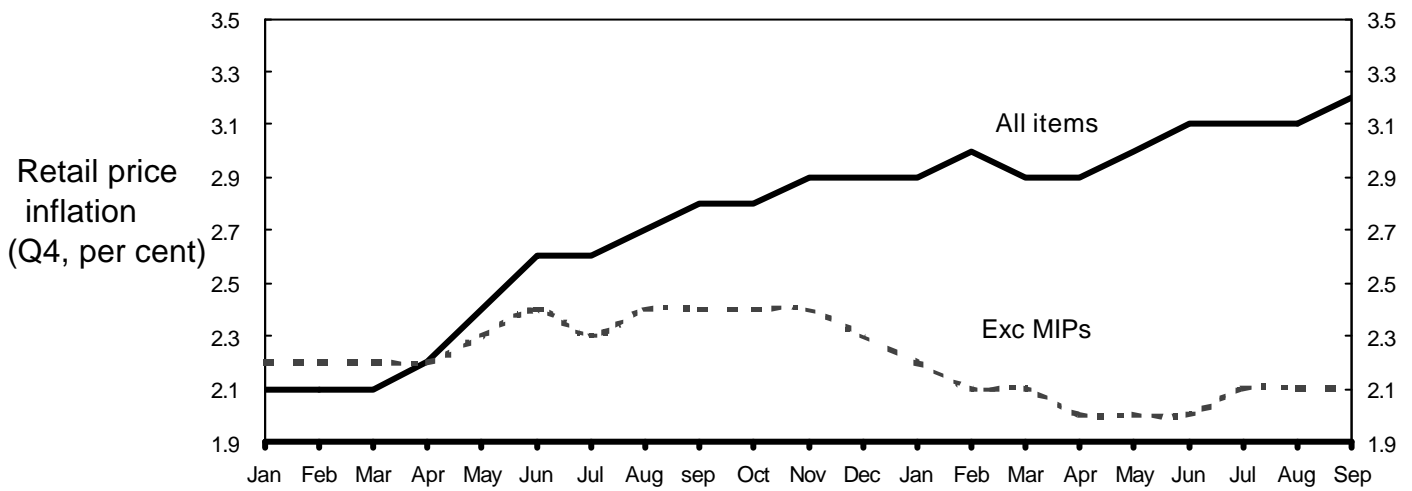
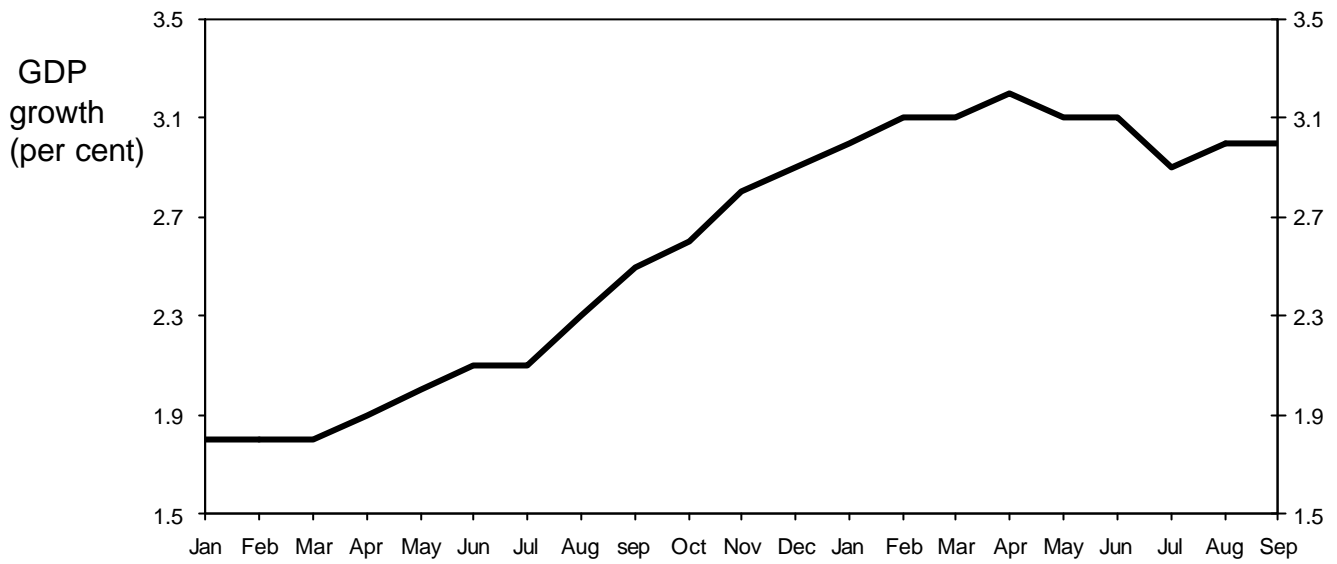
HM Treasury	Mar	-	2½	-	-	-	-	-	-
-------------	-----	---	----	---	---	---	---	---	---

2001

September 2000

Table 6

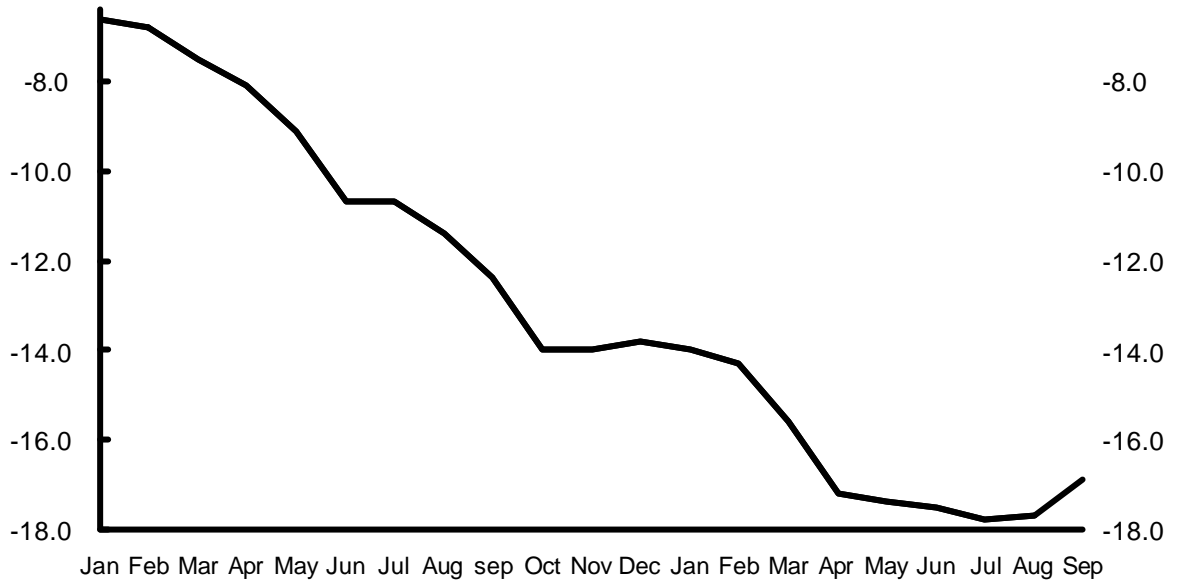
Forecasters & dates of forecasts	Other variables							Current account (£ bn)	PSNB (£bn 01-02)
	RHDI	Employment	Claimant unemp. (Q4-mns)	Industrial production	Manuf'g output	World Trade			
City forecasters									
Abn Amro	Jul	2.2	0.5	1.10	2.1	1.8	8.0	-15.3	-7.1
Barclays Bank	Sep*	2.3	0.2	1.15	-	2.0	-	-19.0	-8.0
Barclays Capital	Sep*	2.7	0.2	1.07	3.1	2.9	-	-14.3	-7.5 cc
Capital Economic	Aug	3.0	0.3	1.00	2.0	2.0	5.5	-16.0	-5.0
Charterhouse	Sep*	3.1	0.9	0.76	1.8	1.7	-	-19.3	-22.0
Chase Manhattan	Sep*	3.8	0.5	0.98	1.2	1.2	7.0	-25.0	-10.0
Credit Lyonnais	Sep*	-	-	1.00	1.8	1.3	5.0	-22.5	-5.0 cc
Credit Suisse First Boston	Sep*	2.8	0.1	1.00	2.5	-	-	-15.0	-5.0 cc
Daiwa Institute of Research	Aug*	3.0	0.5	1.00	-	-	-	-18.4	-10.0
Deutsche Bank	Sep*	3.1	0.5	0.95	2.6	2.4	-	-19.0	-7.3 cc
Dresdner Kleinwort Benson	Sep*	3.1	0.7	0.94	2.0	2.1	-	-24.7	-3.4
Economic Perspectives	Sep*	2.2	0.3	1.05	2.2	2.0	5.0	-19.0	-3.0
Goldman Sachs	Sep*	2.8	0.8	1.00	2.6	2.6	-	-24.9	-5.6
Hermes	Aug	3.0	0.5	1.00	-	-	-	-15.5	-9.2
HSBC Econ & Strategy	Sep*	3.0	0.2	1.26	1.0	1.0	4.6	-17.0	0.0
J P Morgan	Sep*	-	-	3.80	2.6	2.5	-	-15.4	-3.0
Lehman Brothers	Sep*	3.0	1.0	0.93	2.4	2.9	7.9	-28.0	-10.0
Lombard St	Sep*	2.9	0.6	1.00	-	-	-	-16.3	5.0 cc
Merrill Lynch	Jul	-	-	-	-	2.3	-	-21.0	-
Morgan Stanley Dean Witte	Aug	3.6	1.0	1.10	1.4	1.2	-	-16.0	-7.0
Natwest Group	Apr	5.3	-	1.07	2.6	2.4	-	-10.8	-5.5
RBSFM	Jul	2.9	0.4	1.65 aa	2.4	2.2	5.1	-14.4	-7.3
Salomon S Barney/Citibank	Sep*	1.7	0.7	0.79	2.2	2.0	-	-25.1	-2.1
Schroders	Sep*	-	-	-	-1.2	-1.2	-	-22.0	-5.0
S.G.	Apr	2.7	0.4	1.10	1.5	1.5	7.5	-20.0	-6.0
Standard Chartered	Apr	-	0.9	1.20	3.4	3.5	-	-15.0	-7.0
Warburg Dillon Read	Sep*	-	1.0	1.00	2.0	2.2	-	-10.0	-16.0
WestLB Panmure	Mar	2.8	1.2	0.90	2.5	2.4	-	-9.0	-11.0
Williams de Broe	Sep*	-	0.5	1.05	3.6	3.4	7.3	-25.8	-14.8
Non-City forecasters									
BSL	Sep*	3.9	0.6	1.08	1.6	1.9	5.1	-18.1	-8.2
Cambridge Econ	Jun	2.8	0.5	1.40 k	1.4	1.7	3.1 hh	-18.6	8.6 kc
CBI	Jul	3.5	0.9	1.10	2.2	1.9	5.1	-17.4	-6.9
CEBR	Jun	3.1	1.2	0.90	-	2.0	-	-18.8	-17.6 cc
DRI	Jul	3.2	0.9	-	3.8	-	-	-20.0	-15.0
EIU	Jan	3.5	0.2	1.15	2.0	2.0	6.8	-9.5	24.7 eel
Henley	Aug	3.0	0.1	1.10 aa	-	2.2	-	-19.2	-
ITEM Club	Aug	-	-0.1	1.70 aa	2.1	2.2	7.7	-18.5	-6.0
Liverpool Macro Research	Sep*	-	-	0.90	-	-	-	-7.2	-16.6 cc
NIESR	Jul	3.6	0.7	1.08	-	2.4	7.4	-12.3	-8.2
OEF	Sep*	3.0	0.3	1.00	1.7	2.1	7.5	-16.1	-7.5
Primark WEFA	Jul	2.4	0.3	1.11	2.5	2.5	7.1	-15.2	-14.2
EC	Apr	3.5 ff	1.0	1.62 aa	2.0	2.0	7.2	-13.4	-7.3
OECD	Jun	-	0.5	5.80 x	-	2.6	-	-31.0	-
IMF	Apr	-	-	4.50 x	-	-	-	-30.5	-
Average of Forecasts made in last 3 months									
Independent		3.0	0.5	1.02	2.1	2.0	6.4	-18.3	-8.5
New (marked *)		2.9	0.5	1.00	2.0	1.9	6.2	-19.2	-8.4
City		2.9	0.5	1.01	2.0	1.9	6.2	-19.2	-8.1
Range of Forecasts made in last 3 months									
Highest		3.9	1.0	1.26	3.8	3.4	8.0	-7.2	0.0
Lowest		1.7	-0.1	0.76	-1.2	-1.2	4.6	-28.0	-22.0
HM Treasury	Mar	¾-3¼	-	-	-	1¾-2¼	6½	-21	-5.0



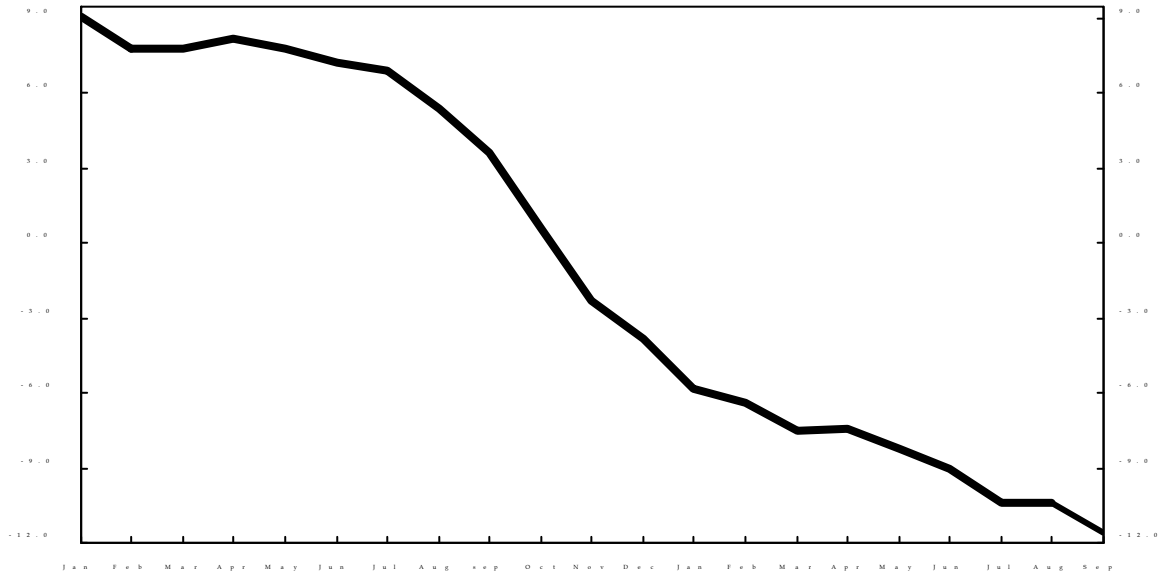
Forecasts for 2000

Independent average January 1999 -September 2000

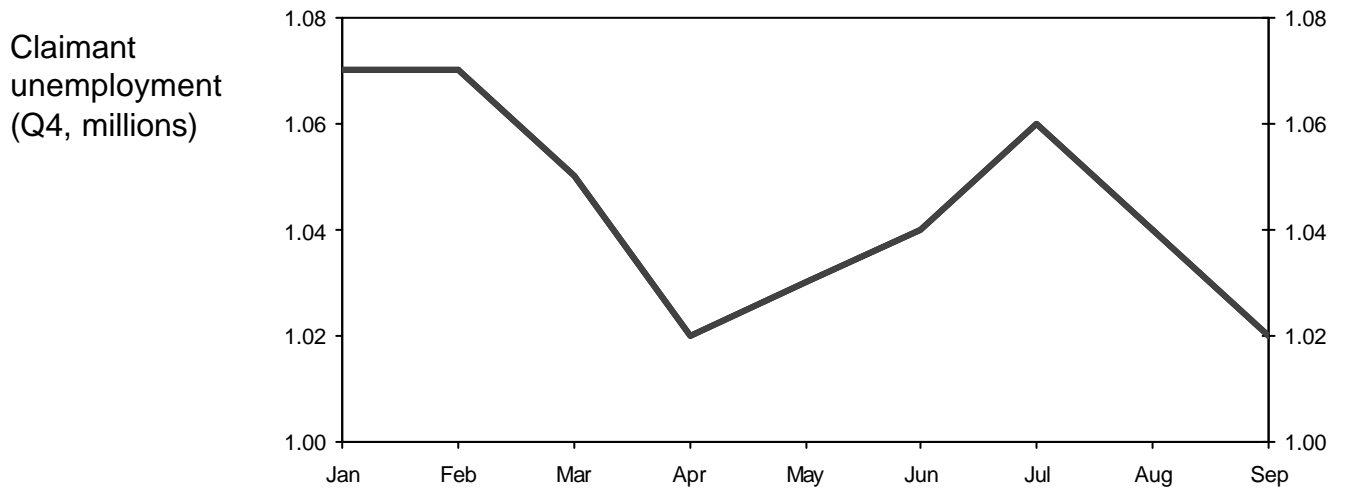
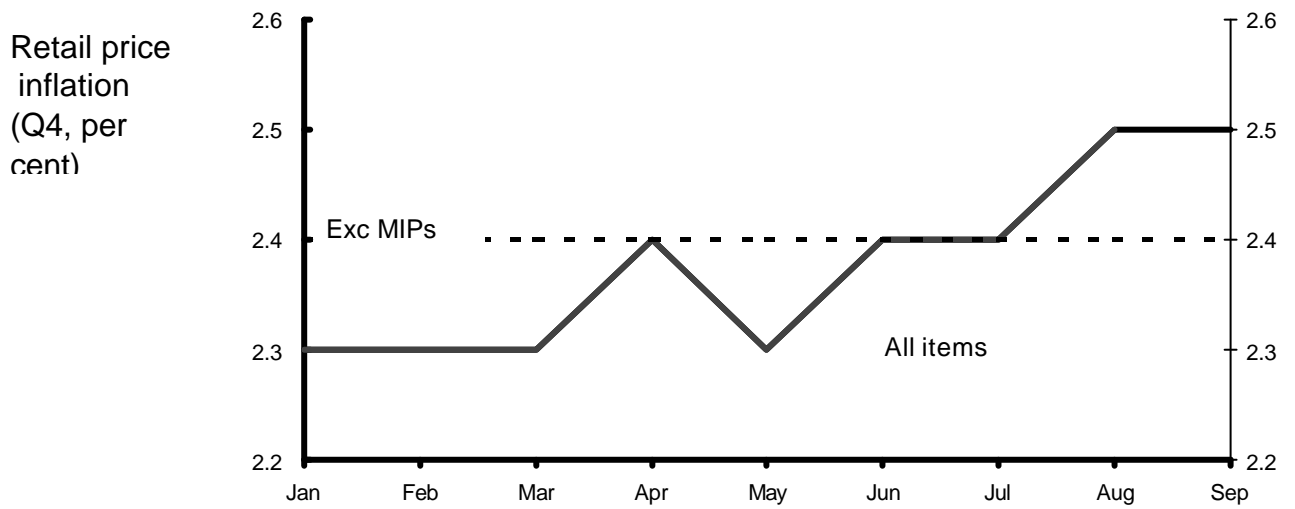
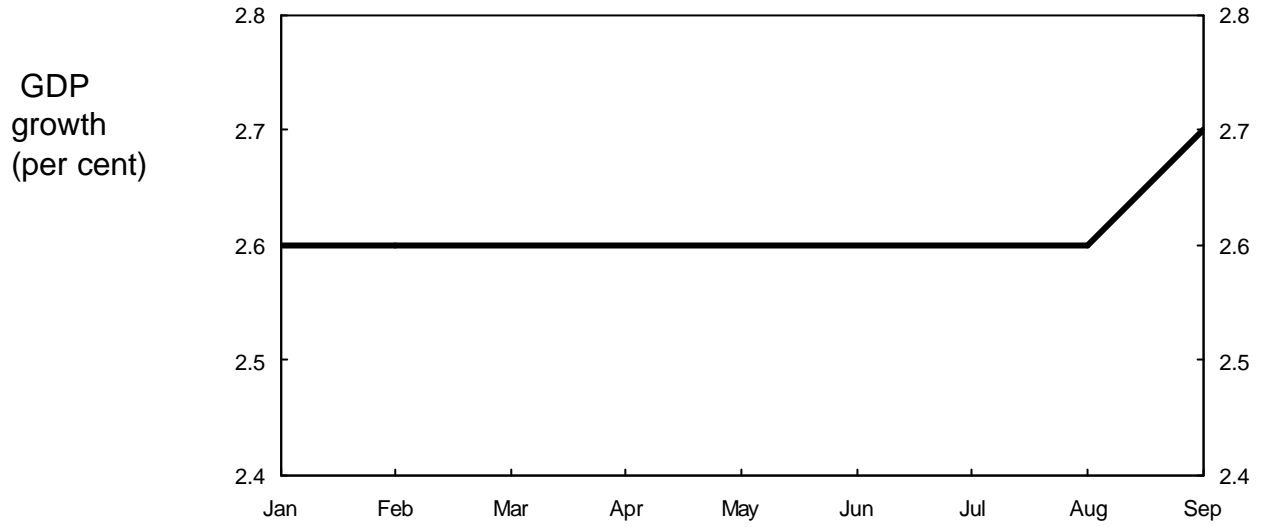
Current account
(£ billion)



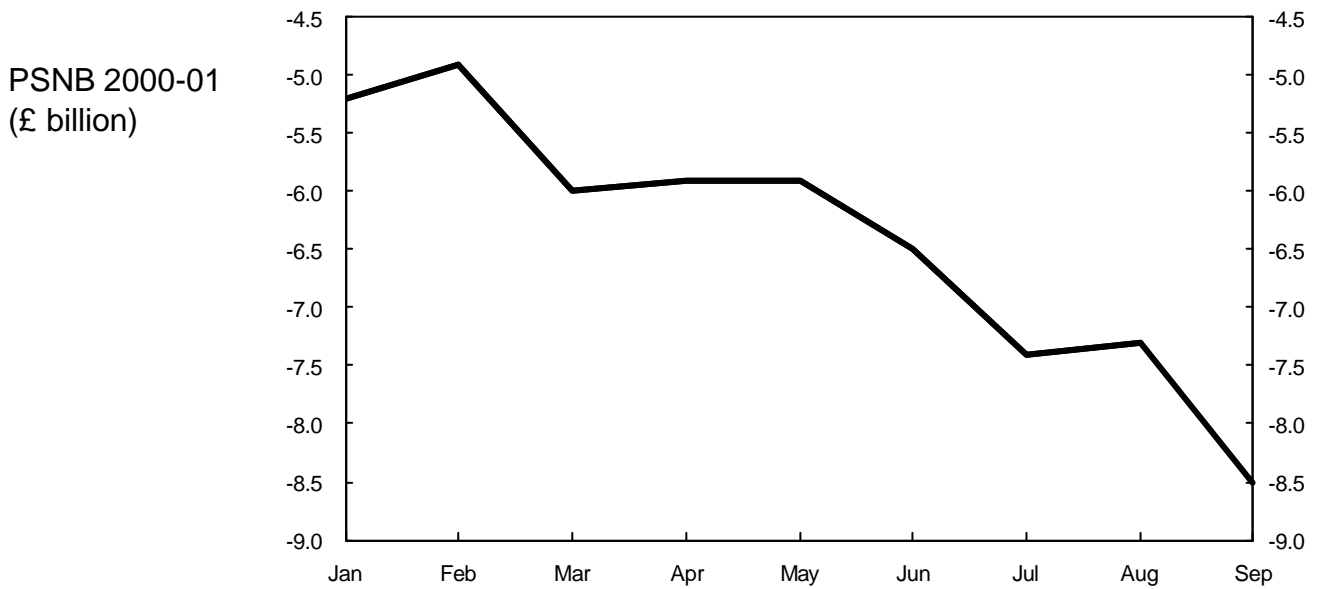
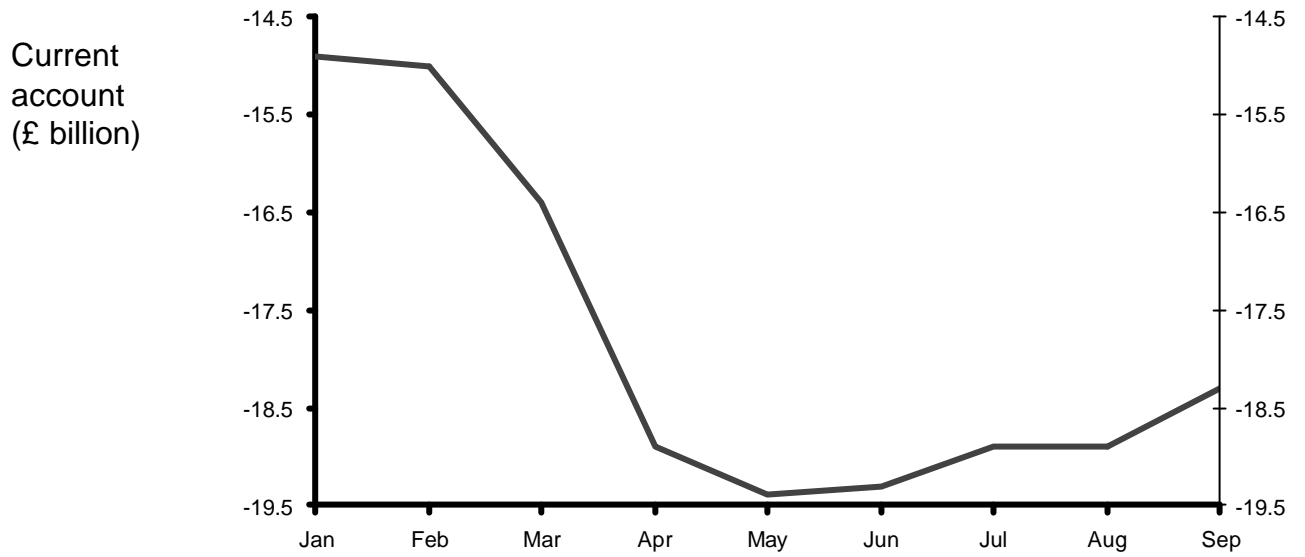
NB 2000-01
(billion)



Forecasts for 2001
Independent average, January 2000 - September 2000

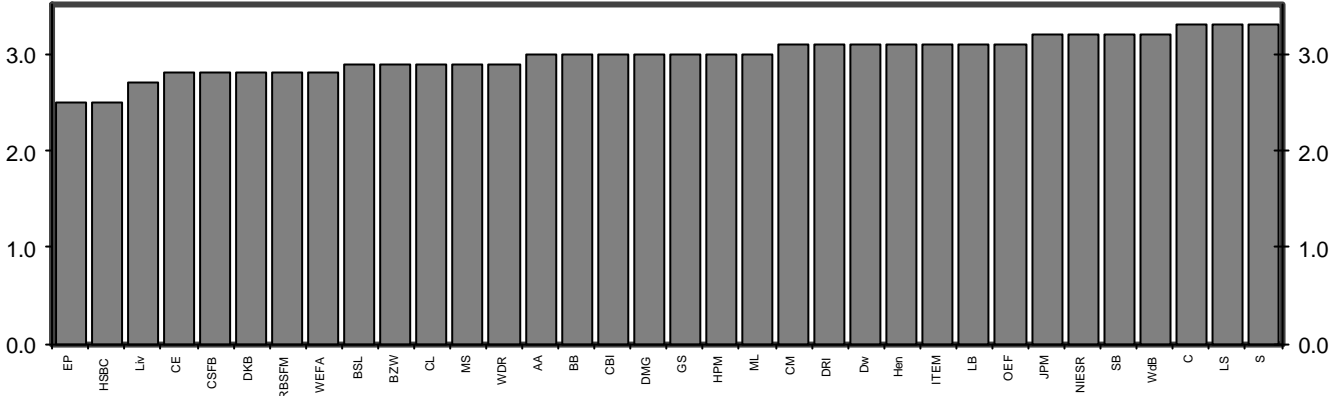


Forecasts for 2001
Independent average, January 2000 - September 2000

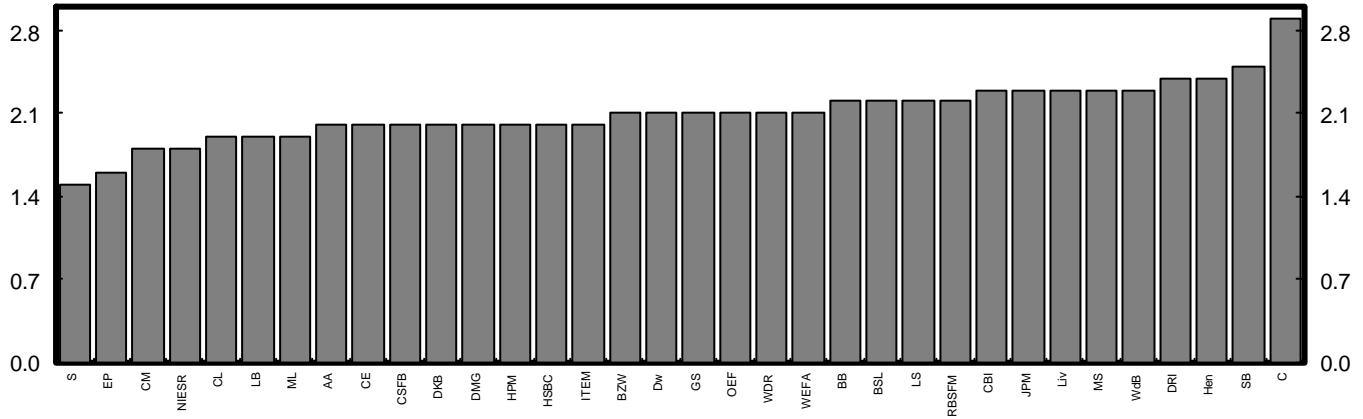


Forecasts for 2000
September 2000 range of forecasts (made in last 3 months)

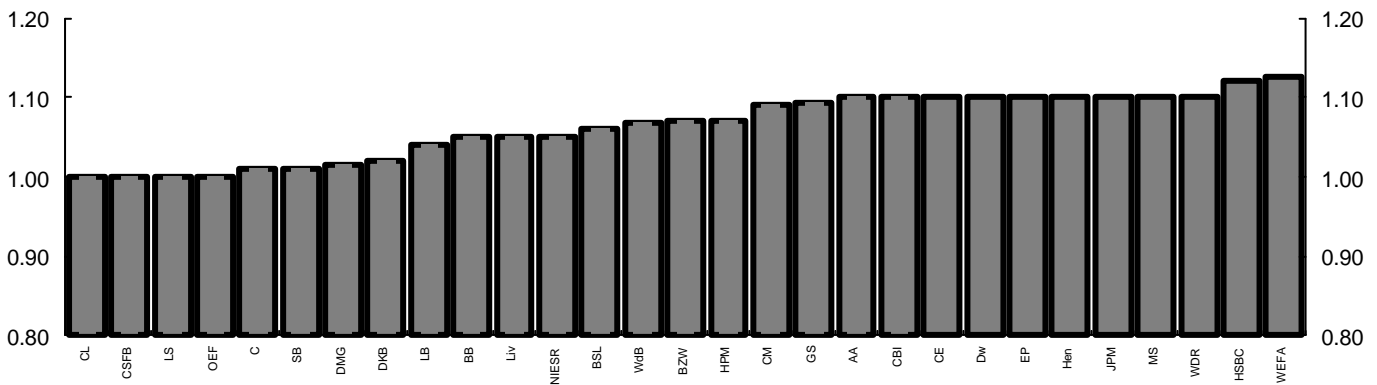
GDP growth (per cent)



Retail price inflation exc MIPs (Q4, per cent)



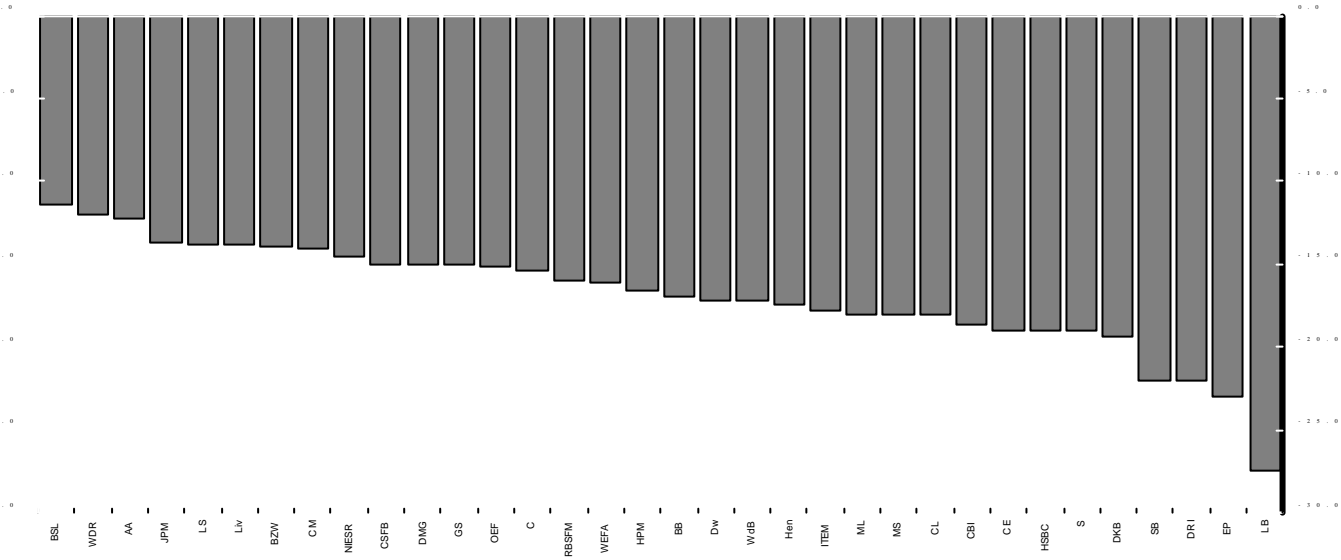
Claimant unemployment (Q4, millions)



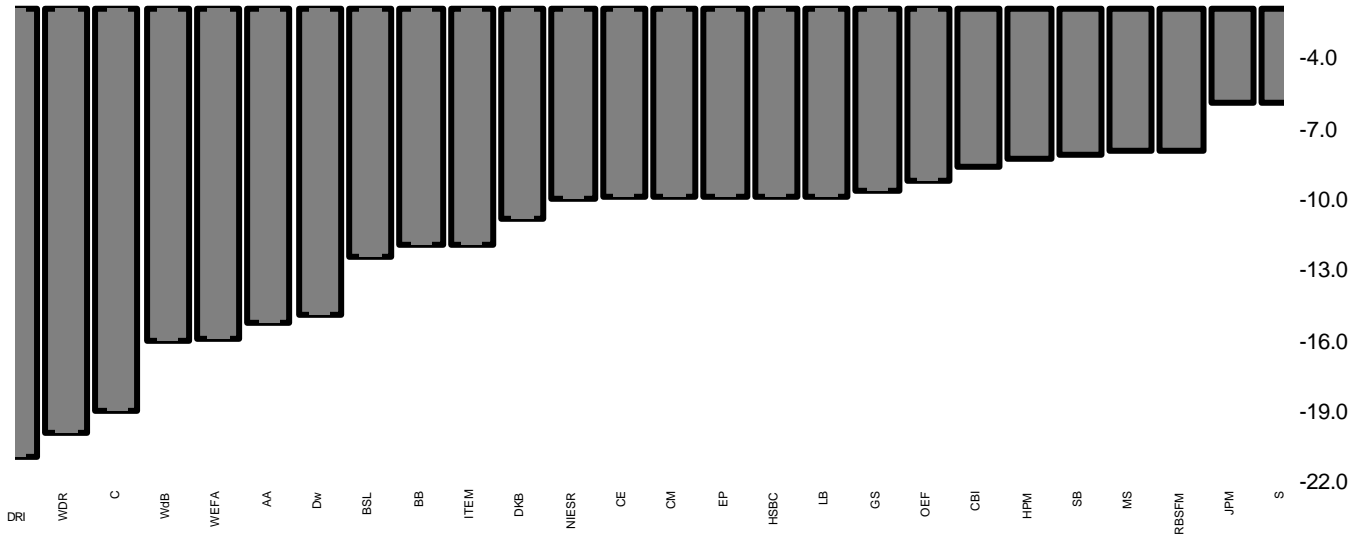
Forecasts for 2000

September 2000 range of forecasts (made in last 3 months)

Current account (£ billion)

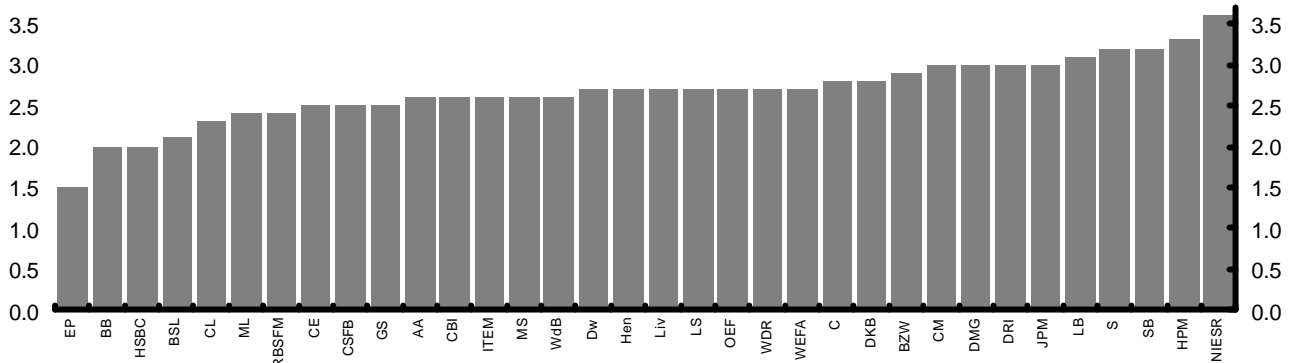


PSNB (2000 - 01, £ billion)

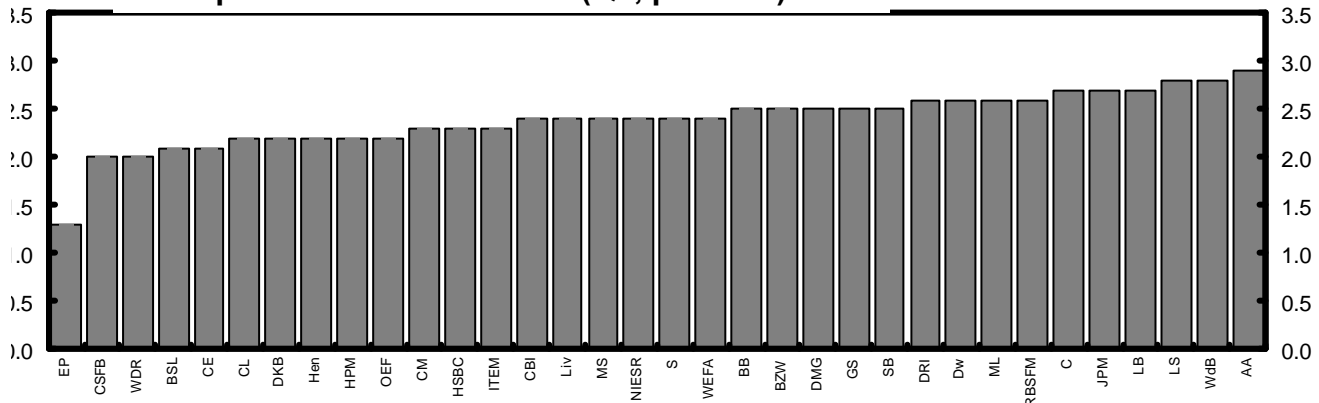


Forecasts for 2001
September 2000 range of forecasts (made in last 3 months)

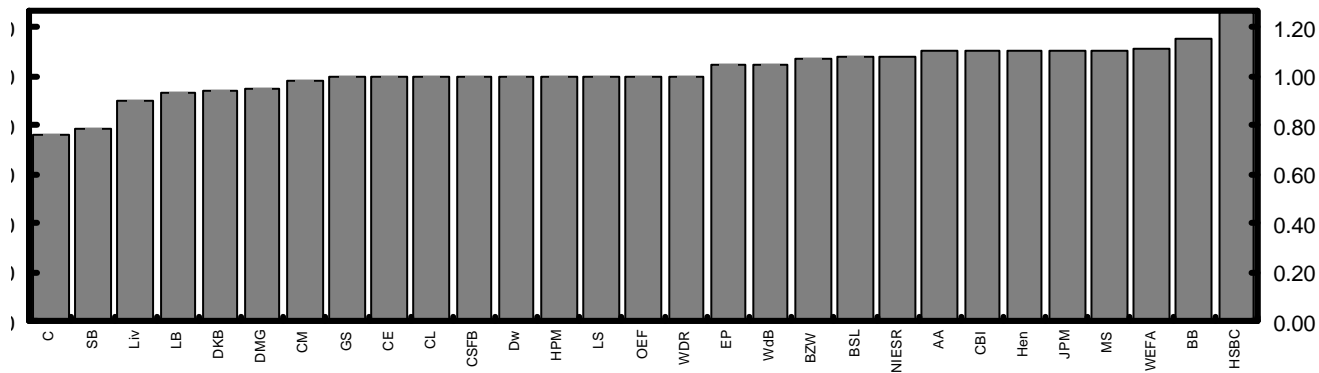
GDP growth (per cent)



Retail price inflation exe MIPs (Q4, per cent)

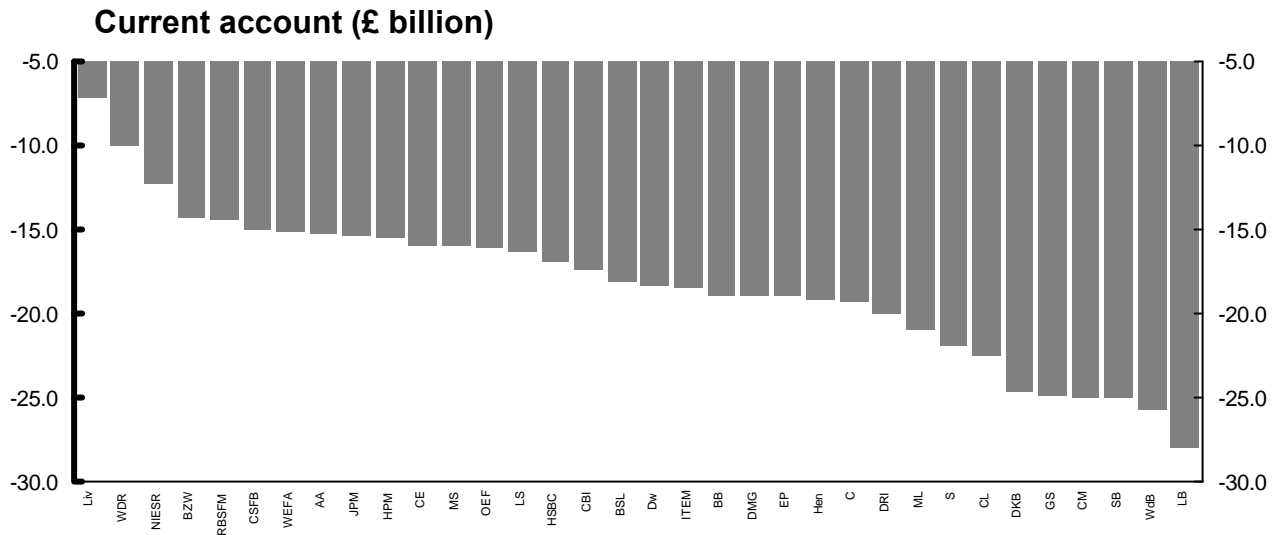


Claimant unemployment (Q4, millions)

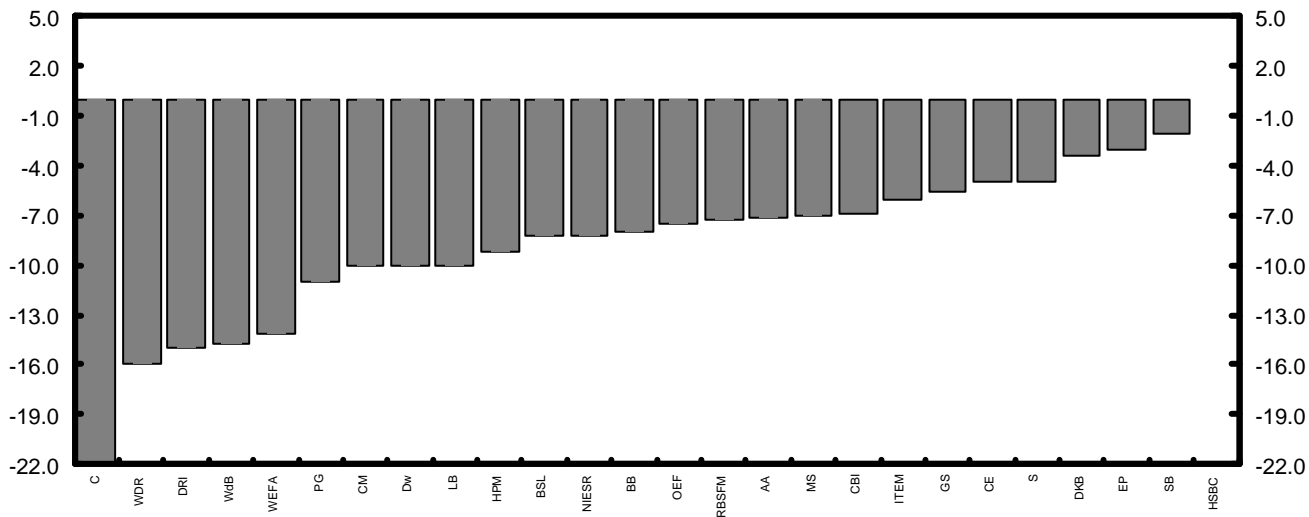


Forecasts for 2001

September 2000 range of forecasts (made in last 3 months)



PSNB (2001- 02 £ billion)



ANNEX 1: Forecasting institutions referred to in charts and tables:

AA:	Abn Amro
BB:	Barclays Bank
BZW:	Barclays Capital
BSL:	Business Strategies Ltd
CamE:	Cambridge Econometrics
CapE:	Capital Economics
C:	Charterhouse
CM:	Chase Manhattan
CBI:	Confederation of British Industry
CEBR:	Centre for Economics and Business Research Ltd
CL:	Credit Lyonnais
CSFB:	Credit Suisse First Boston
Dw:	Daiwa Europe Ltd/DIR
DB :	Deutsche Bank
DKB:	Dresdner Kleinwort Benson
DRI:	Data Resources Inc. Europe
EC:	European Commission
EIU:	Economist Intelligence Unit
EP:	Economic Perspectives
GNW:	Greenwich Natwest
GS:	Goldman Sachs
Hen:	Henley Forecasting Centre
HSBC:	HSBC Economics and Strategy
HPM:	Hermes Pensions Management Ltd
IMF:	International Monetary Fund
ITEM:	ITEM Club
JPM:	J P Morgan
LB:	Lehman Brothers
Liv:	Liverpool Mecro Research
LS:	Lombard Street Research Ltd
ML:	Merrill Lynch
MSDW:	Morgan Stanley Dean Witter
NIESR:	National Institute for Economic and Social Research
NG:	Natwest Group
NE:	Nikko Europe
NUIM:	Norwich Union Investment Management
OECD	Organisation for Economic Cooperation and Development
OEF:	Oxford Economic Forecasting
SB:	Saloman Smith Barney
S:	Schroders
SG:	Societe Generale
WDR:	Warburg Dillon Read
WLBP:	WestLB Panmure
WdB:	Williams de Broë
WEFA:	Primark WEFA

Notation used in tables:

- a: consumers=expenditure deflator
- b: underlying consumers=expenditure deflator
- c: non-durable consumption
- d: current and capital expenditure, including stockbuilding
- e: private sector investment, stockbuilding and durable consumption
- f: investment and stockbuilding combined
- g: as a percentage of GDP
- h: contribution to GDP growth - per cent
- i: hourly rate
- j: end period
- k: calendar year
- m: non-oil trade
- n: wages and salaries divided by employees in employment
- o: consumer price deflator to Q4
- p: calculated from general government financial deficit figures adjusted for privatisation proceeds
- q: forecast growth rates for Q4
- r: various definitions; refer to forecasters for details
- s: base rate
- t: billions of dollars
- u: general government current and capital expenditure plus stockbuilding
- v: average of spot price of Brent crude and Dubai light crude
- w: UK export markets
- x: claimant unemployment rate
- y: derived from the consumer price index
- z: OECD real imports of goods and services
- aa: ILO Unemployment
- bb: households only
- cc: PSNCR (FormerlyPSBR)
- dd: harmonized index of consumer prices (HICP)
- ee: general government financial balance
- ff: gross disposable income deflated by implicit price of private consumption
- gg: **1990 Prices**
- hh: **World GDP**

Contact lists:

Organisation	Contact	Telephone number
Abn Amro	Richard Iley	020 7374 7171
Barclays Bank	Mark Joint	01202 344 112
Barclays Capital	David Hillier	020 7773 4307
BSL	Neil Blake	020 7630 5959
Cambridge Econometrics	Rachel Beaven	01223 460 760
Capital Economics	Jonathan Loynes	020 7823 6666
Charterhouse	Richard Jeffrey	020 7246 2472
Chase Manhattan	Adrian Schmidt	020 7777 4033
CBI	Ranjiv Mann	020 7395 8101
CEB	Solomon Peters	020 7600 6661
Credit Lyonnais	Glenn Davies	020 7214 5388
Credit Suisse First Boston	Robert Barrie	020 7888 7536
Daiwa Europe Ltd/DIR	Don Eggington	020 7597 8000
Deutsche Morgan Grenfell	Ciaran Barr	020 7545 2088
Dresdner Kleinwort Benson	Leo Doyle	020 7956 8074
DRI	Darren Rawcliffe	020 8545 6225
EC 3446	Keith Vernon	(00 322) 299
EIU	Phillip Whyte	020 7830 1287
Economic Perspectives	Peter Warburton	020 7382 8317
Goldman Sachs	Ann Terry	020 7774 1166
Greenwich Natwest	Geoffrey Dicks	020 7389 3892
Henley Centre	David Martin	020 7955 1868
Hermes Pensions Man. Ltd	James Walsh	020 7680 2144
HSBC	Dharshini Davides	020 7336 4147
ITEM club	John Gaster	01865 268913
J P Morgan	Danny Gabay	020 7325 5335
Lehman Brothers	Mike Dicks	020 78260 2783
Liverpool Mecro Research	Patrick Minford	01222 875728
Lombard Street Research Ltd	Stewart Robertson	020 7337 2800
Merrill Lynch	Ian Stewart	0020 7772 1512
Morgan Stanley Dean Witter	Mark Miller	0020 7513 6643
NIESR	Garry Young	0020 7222 7665
Natwest Group	Elisabeth Hall	0020 7726 1912
Norwich Union IM	Mike Collins	01603 683680
Oxford Economic Forecasting	Adrian Cooper	01865 202 828
Saloman Smith Barney	Michael Saunders	020 7721 3924
Schroders	Sharda Dean	020 7658 6439
S.G. (Societe Generale)	Brian Hilliard	020 7762 5014
Warburg Dillon Read	Darren Winder	020 7568 4412
Primark WEFA	Paul Robson	0207 5660 07963
WestLB Panmure	Stuart Weatherby	020 7860 3659
Williams de Broë ext 402	David Smith	020 7588 7511

ANNEX 1: Forecasting institutions referred to in charts and tables:

AA:	Abn Amro
BB:	Barclays Bank
BZW:	Barclays Capital
BSL:	Business Strategies Ltd
CamE:	Cambridge Econometrics
CapE:	Capital Economics
C:	Charterhouse
CM:	Chase Manhattan
CBI:	Confederation of British Industry
CEBR:	Centre for Economics and Business Research Ltd
CL:	Credit Lyonnais
CSFB:	Credit Suisse First Boston
Dw:	Daiwa Europe Ltd/DIR
DB :	Deutsche Bank
DKB:	Dresdner Kleinwort Benson
DRI:	Data Resources Inc. Europe
EC:	European Commission
EIU:	Economist Intelligence Unit
EP:	Economic Perspectives
GNW:	Greenwich Natwest
GS:	Goldman Sachs
Hen:	Henley Forecasting Centre
HSBC:	HSBC Economics and Strategy
HPM:	Hermes Pensions Management Ltd
IMF:	International Monetary Fund
ITEM:	ITEM Club
JPM:	J P Morgan
LB:	Lehman Brothers
Liv:	Liverpool Mecro Research
LS:	Lombard Street Research Ltd
ML:	Merrill Lynch
MSDW:	Morgan Stanley Dean Witter
NIESR:	National Institute for Economic and Social Research
NG:	Natwest Group
NE:	Nikko Europe
NUIM:	Norwich Union Investment Management
OECD	Organisation for Economic Cooperation and Development
OEF:	Oxford Economic Forecasting
SB:	Saloman Smith Barney
S:	Schroders
SG:	Societe Generale
WDR:	Warburg Dillon Read
WLBP:	WestLB Panmure
WdB:	Williams de Broë
WEFA:	Primark WEFA

Notation used in tables:

- a: consumers=expenditure deflator
- b: underlying consumers=expenditure deflator
- c: non-durable consumption
- d: current and capital expenditure, including stockbuilding
- e: private sector investment, stockbuilding and durable consumption
- f: investment and stockbuilding combined
- g: as a percentage of GDP
- h: contribution to GDP growth - per cent
- i: hourly rate
- j: end period
- k: calendar year
- m: non-oil trade
- n: wages and salaries divided by employees in employment
- o: consumer price deflator to Q4
- p: calculated from general government financial deficit figures adjusted for privatisation proceeds
- q: forecast growth rates for Q4
- r: various definitions; refer to forecasters for details
- s: base rate
- t: billions of dollars
- u: general government current and capital expenditure plus stockbuilding
- v: average of spot price of Brent crude and Dubai light crude
- w: UK export markets
- x: claimant unemployment rate
- y: derived from the consumer price index
- z: OECD real imports of goods and services
- aa: ILO Unemployment
- bb: households only
- cc: PSNCR (FormerlyPSBR)
- dd: harmonized index of consumer prices (HICP)
- ee: general government financial balance
- ff: gross disposable income deflated by implicit price of private consumption
- gg: **1990 Prices**
- hh: **World GDP**

Contact lists:

Organisation	Contact	Telephone number
Abn Amro	Richard Iley	020 7374 7171
Barclays Bank	Mark Joint	01202 344 112
Barclays Capital	David Hillier	020 7773 4307
BSL	Neil Blake	020 7630 5959
Cambridge Econometrics	Rachel Beaven	01223 460 760
Capital Economics	Jonathan Loynes	020 7823 6666
Charterhouse	Richard Jeffrey	020 7246 2472
Chase Manhattan	Adrian Schmidt	020 7777 4033
CBI	Ranjiv Mann	020 7395 8101
CEB	Solomon Peters	020 7600 6661
Credit Lyonnais	Glenn Davies	020 7214 5388
Credit Suisse First Boston	Robert Barrie	020 7888 7536
Daiwa Europe Ltd/DIR	Don Eggington	020 7597 8000
Deutsche Morgan Grenfell	Ciaran Barr	020 7545 2088
Dresdner Kleinwort Benson	Leo Doyle	020 7956 8074
DRI	Darren Rawcliffe	020 8545 6225
EC	Keith Vernon	(00 322) 299 3446
EIU	Phillip Whyte	020 7830 1287
Economic Perspectives	Peter Warburton	020 7382 8317
Goldman Sachs	Ann Terry	020 7774 1166
Greenwich Natwest	Geoffrey Dicks	020 7389 3892
Henley Centre	David Martin	020 7955 1868
Hermes Pensions Man. Ltd	James Walsh	020 7680 2144
HSBC	Dharshini Davides	020 7336 4147
ITEM club	John Gaster	01865 268913
J P Morgan	Danny Gabay	020 7325 5335
Lehman Brothers	Mike Dicks	020 78260 2783
Liverpool Mecro Research	Patrick Minford	01222 875728
Lombard Street Research Ltd	Stewart Robertson	020 7337 2800
Merrill Lynch	Ian Stewart	0020 7772 1512
Morgan Stanley Dean Witter	Mark Miller	0020 7513 6643
NIESR	Garry Young	0020 7222 7665
Natwest Group	Elisabeth Hall	0020 7726 1912
Norwich Union IM	Mike Collins	01603 683680
Oxford Economic Forecasting	Adrian Cooper	01865 202 828
Saloman Smith Barney	Michael Saunders	020 7721 3924
Schroders	Sharda Dean	020 7658 6439
S.G. (Societe Generale)	Brian Hilliard	020 7762 5014
Warburg Dillon Read	Darren Winder	020 7568 4412
Primark WEFA	Paul Robson	0207 5660 07963
WestLB Panmure	Stuart Weatherby	020 7860 3659
Williams de Broë	David Smith	020 7588 7511 ext 402