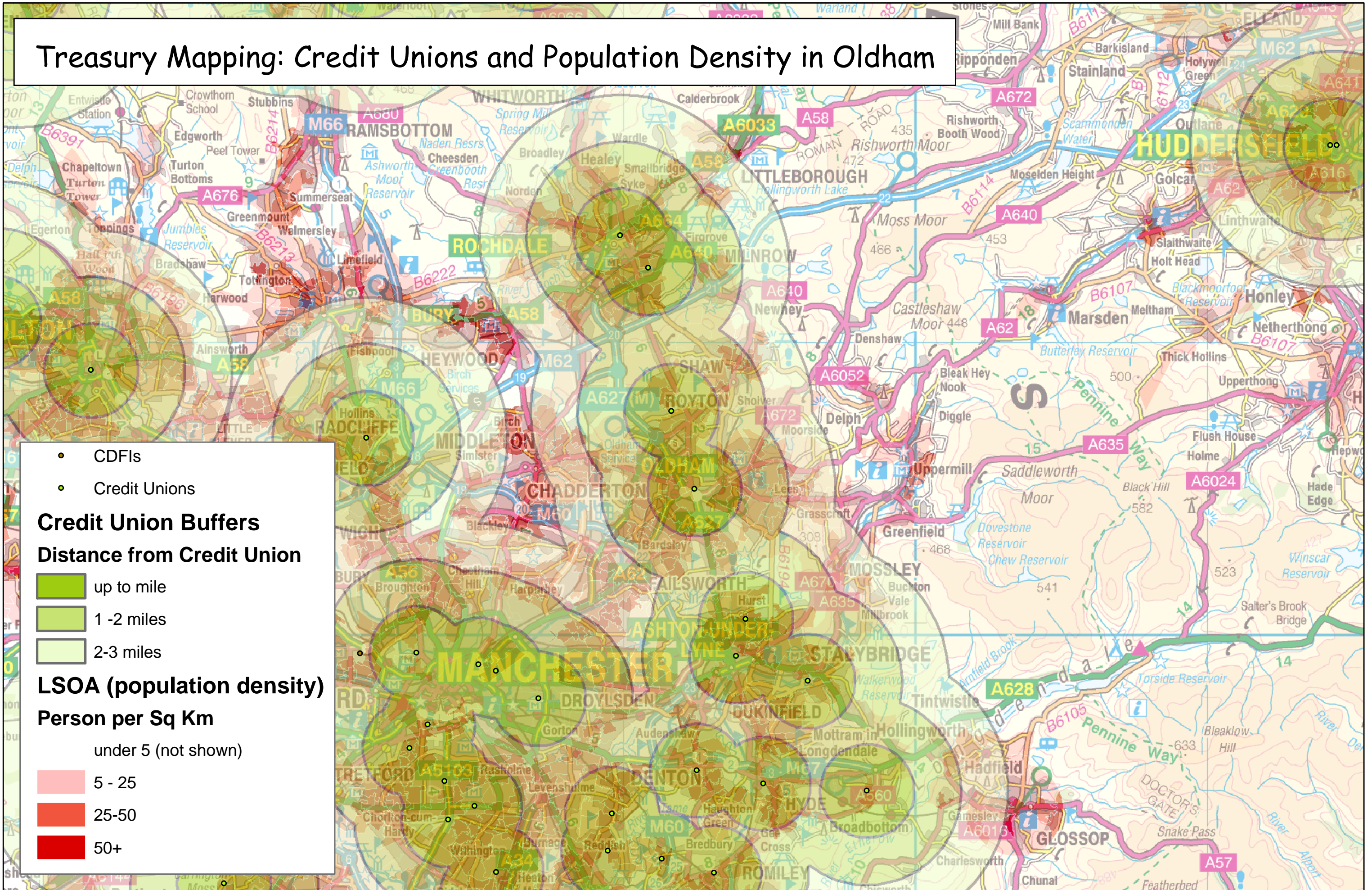


# Treasury Mapping: Credit Unions and Population Density in Oldham



- CDFIs
- Credit Unions

**Credit Union Buffers**

**Distance from Credit Union**

- up to mile
- 1 -2 miles
- 2-3 miles

**LSOA (population density)**

**Person per Sq Km**

- under 5 (not shown)
- 5 - 25
- 25-50
- 50+

This map is reproduced from Ordnance Survey material with the permission of Ordnance Survey on behalf of the Controller of Her Majesty's Stationery Office © Crown copyright. Unauthorised reproduction infringes Crown copyright and may lead to prosecution or civil proceedings (ONS.GD272183.2005).