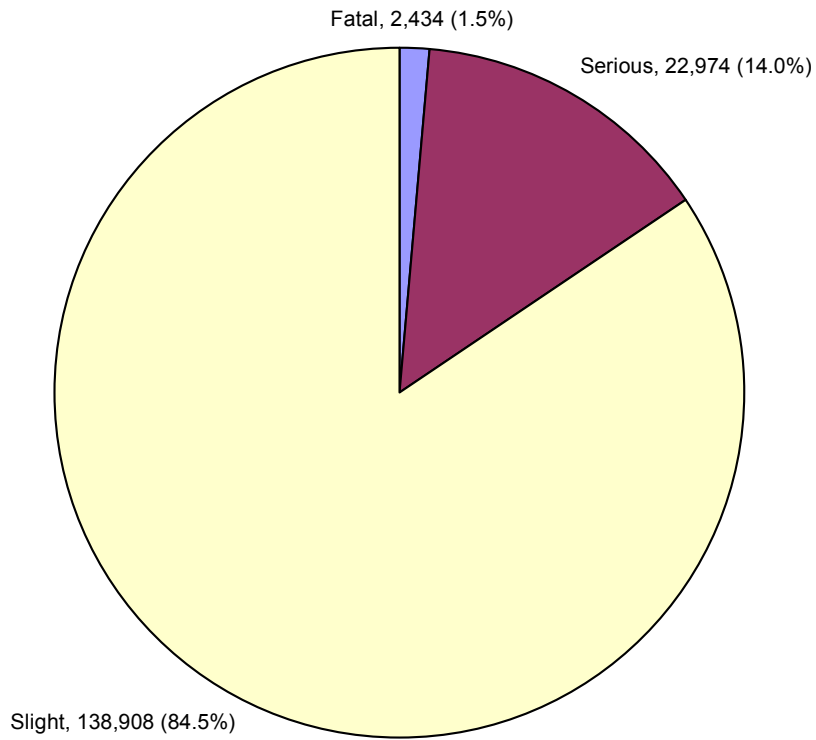
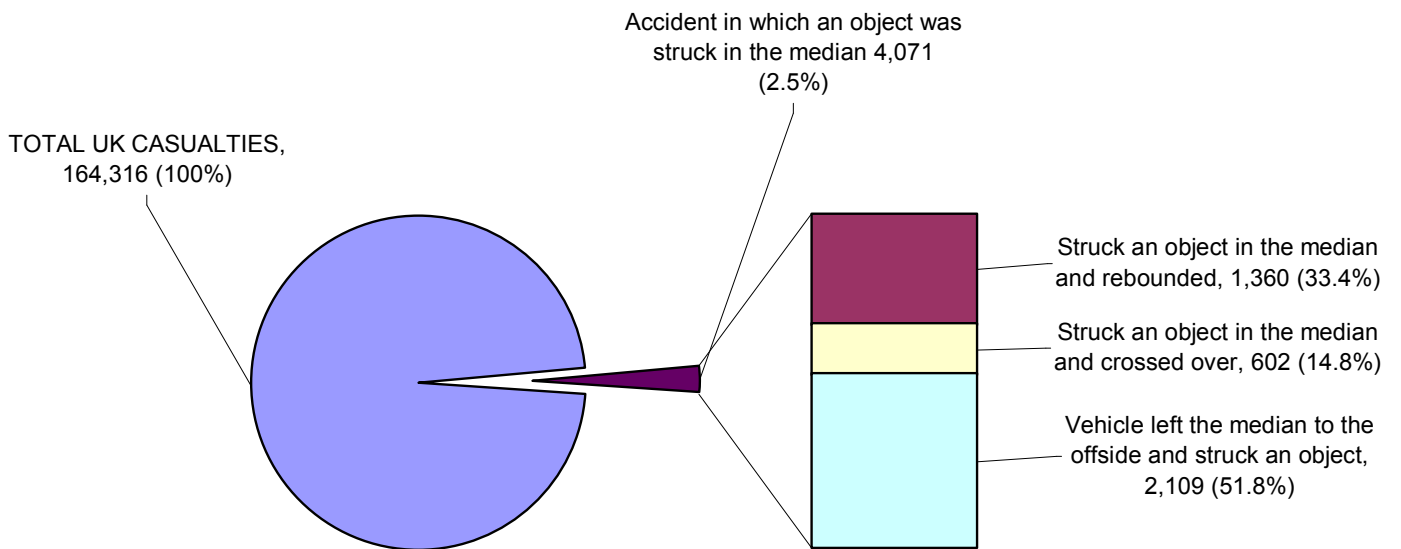


ANNEX I

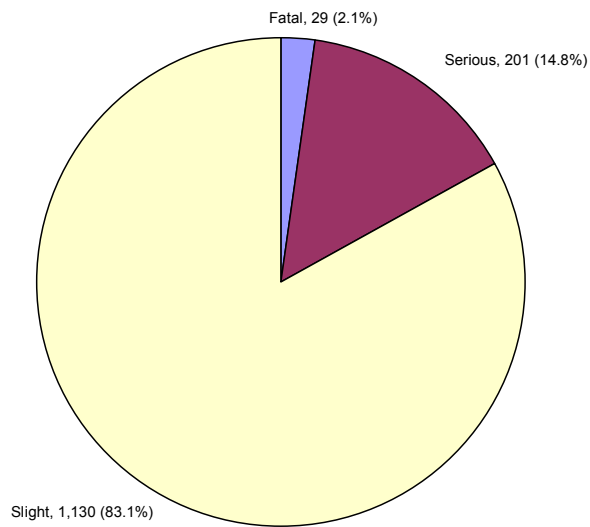
STATS19 GRAPHS: CASUALTY STATISTICS



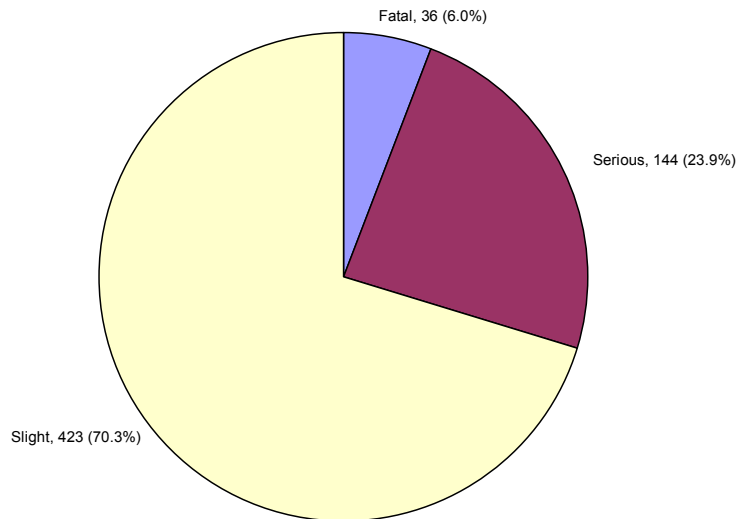
**Graph I1: Number of casualties occurring on major roads in Great Britain, 1990 to 2002
– Refer to Table H1**



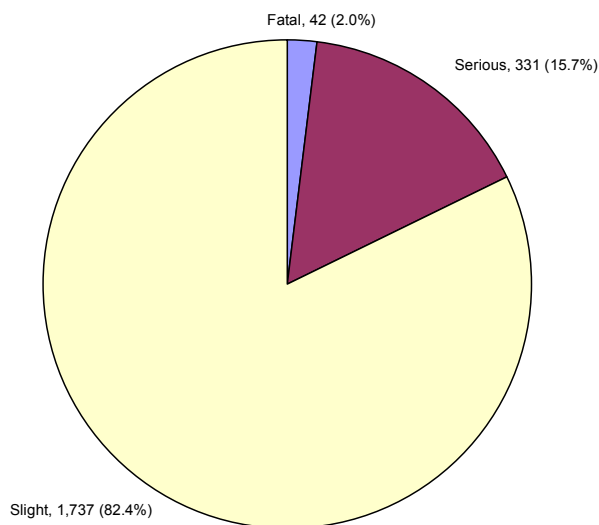
**Graph I2: Breakdown of Casualties in which an Object has been struck in the Median –
Refer to Table H2**



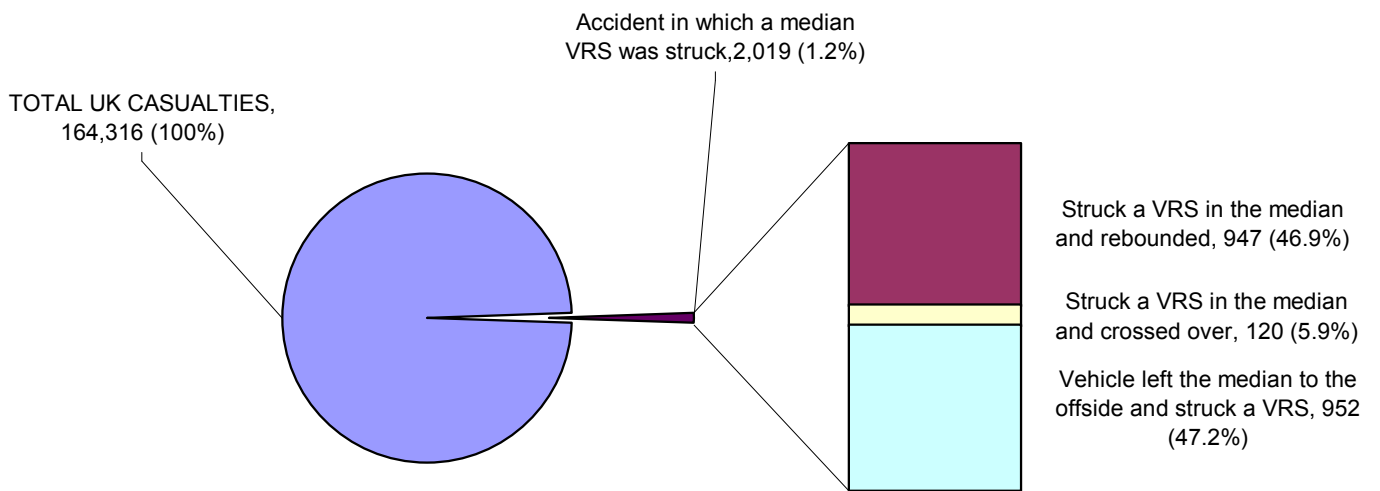
Graph I3: Number of casualties, by severity, resulting from accidents in which an object is struck in the median and the vehicle is rebounded (total – 1,360)



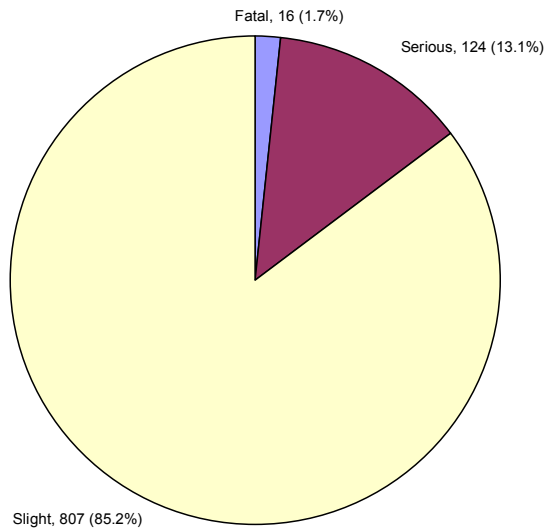
Graph I4: Number of casualties, by severity, resulting from accidents in which an object is struck in the median and the vehicle crosses through the median (total - 602)



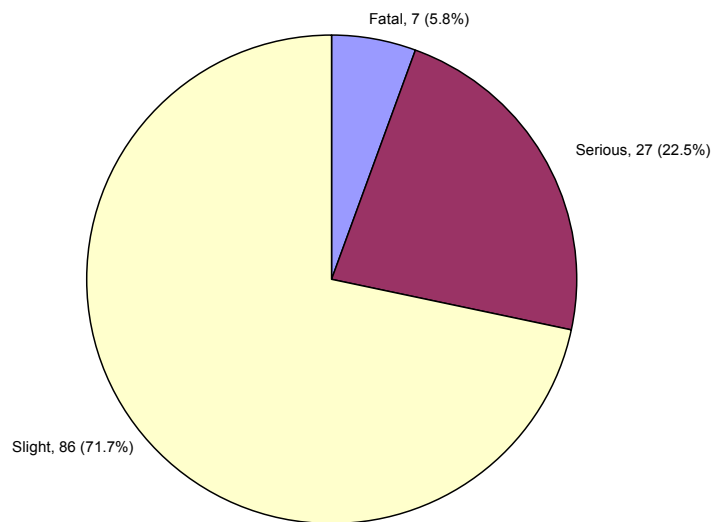
Graph I5: Number of casualties, by severity, resulting from accidents in which an object is struck in the median and the vehicle is retained in the close vicinity of the median (total – 2,109)



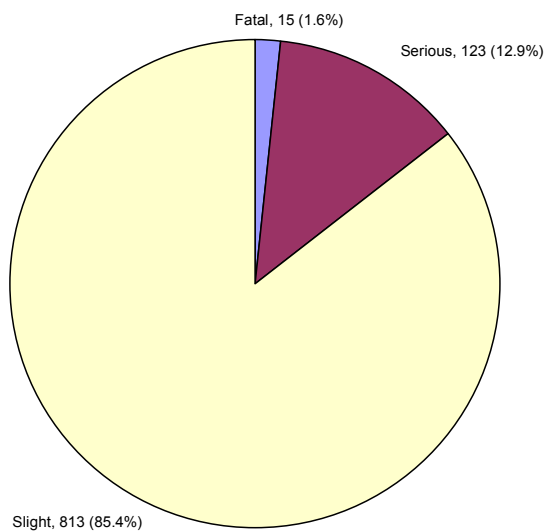
Graph I6: Breakdown of Casualties resulting from accidents in which a median safety barrier has been struck – Refer to Table H3



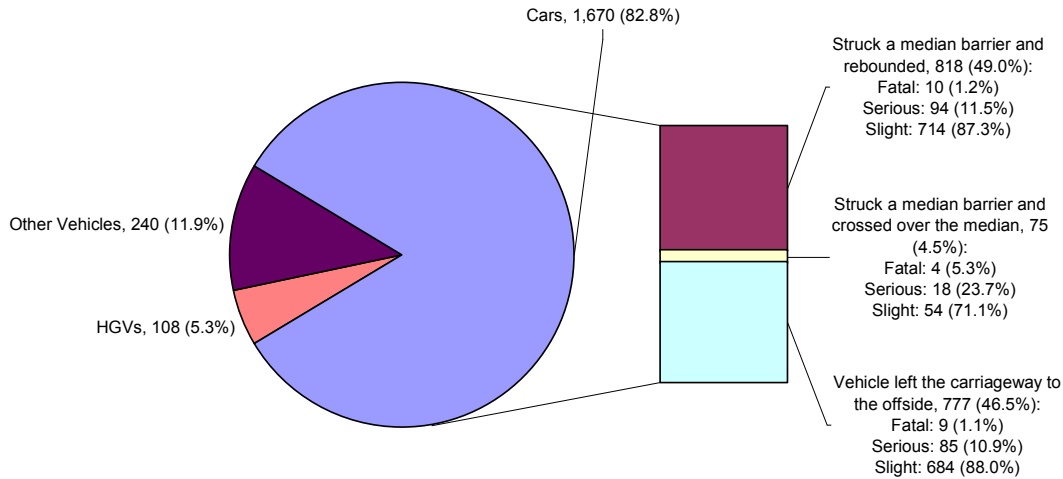
Graph I7: Severity of Casualties in accident in which a median safety barrier is struck and the vehicle is rebounded (total – 947)



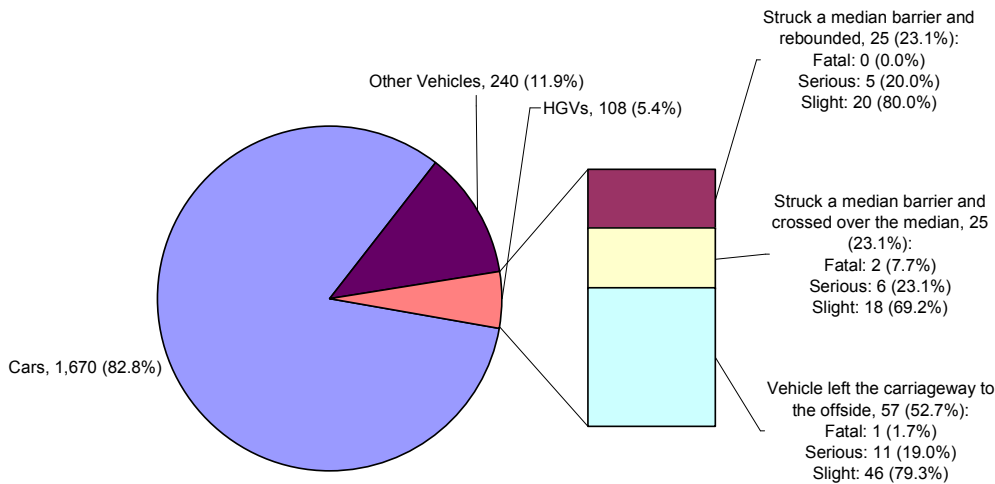
Graph I8: Severity of Casualties in accident in which a median safety barrier is struck and the vehicle crosses through the median (total – 120)



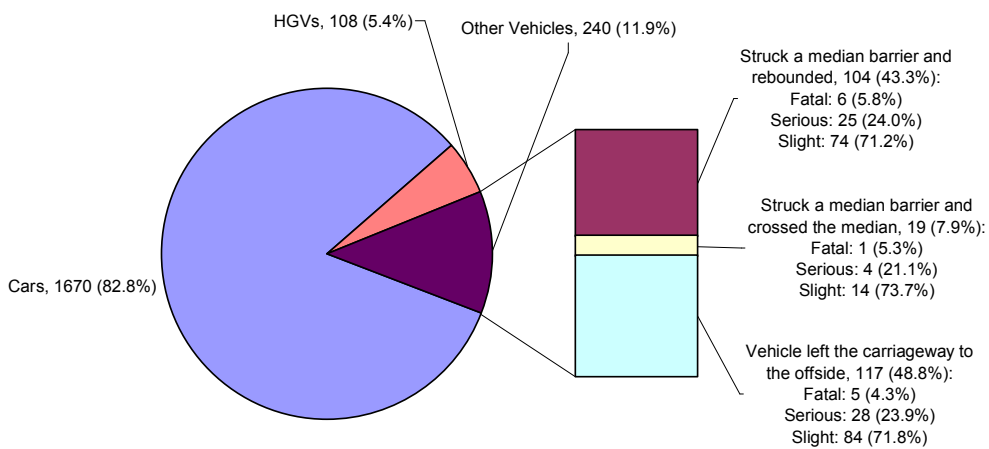
Graph I9: Severity of Casualties in accident in which a median safety barrier is struck and the vehicle is retained in the close vicinity of the median (total - 952)



Graph I10: Breakdown of Casualties arising from accidents involving Cars impacting a median safety barrier



Graph I11: Breakdown of Casualties arising from accidents involving HGVs impacting a median safety barrier



Graph I12: Breakdown of Casualties arising from accidents involving 'Other Vehicles' impacting a median safety barrier