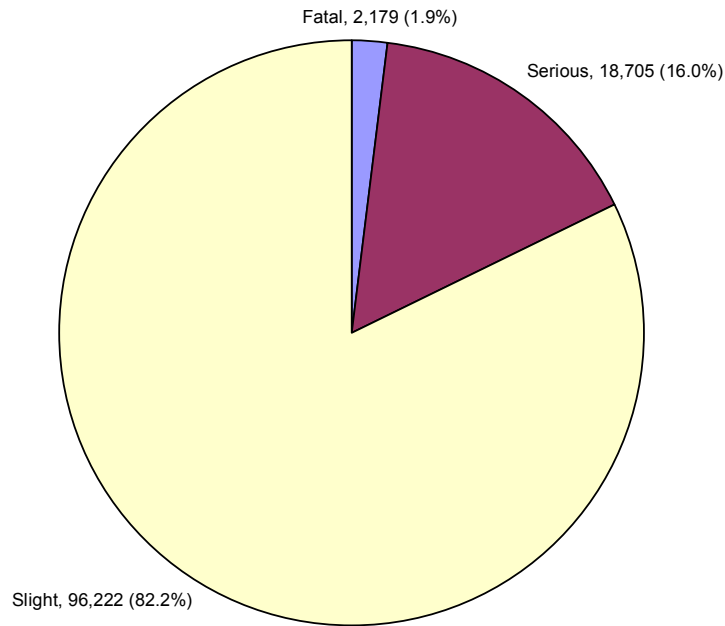
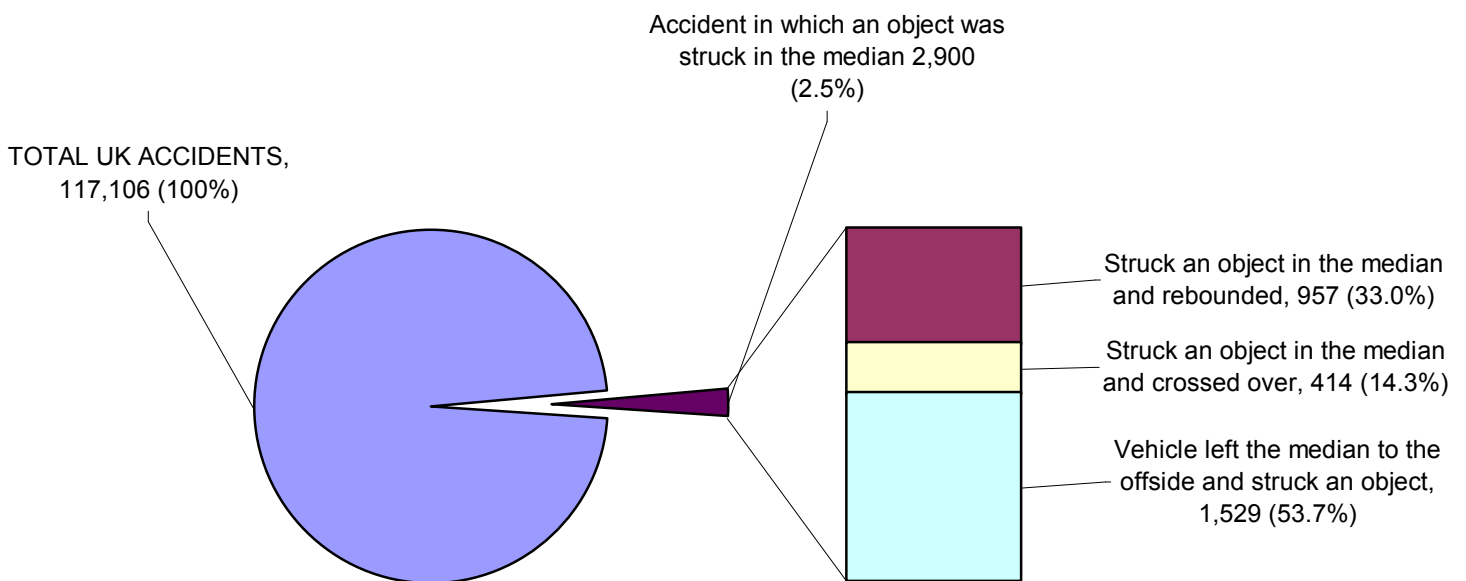


ANNEX G

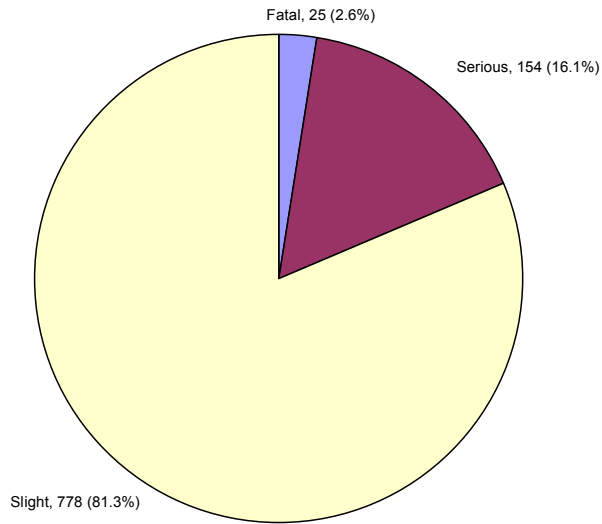
STATS19 GRAPHS: ACCIDENT STATISTICS



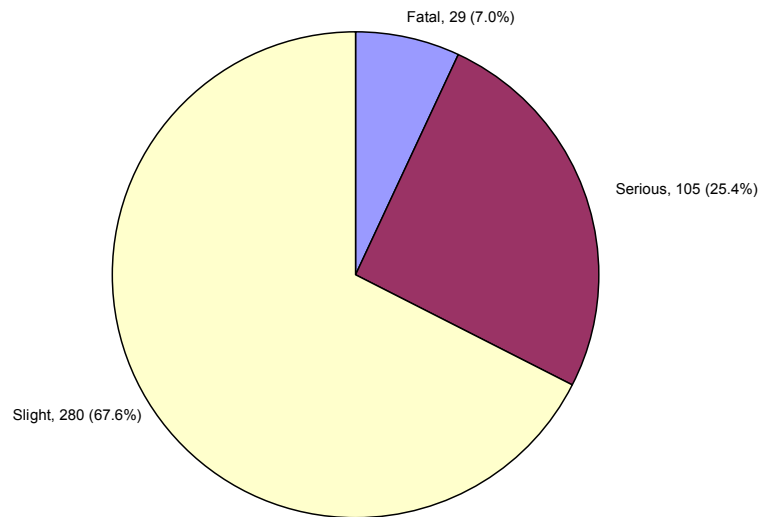
Graph G1: Number of accidents occurring on major roads in Great Britain, 1990 to 2002 – Refer to Table F1



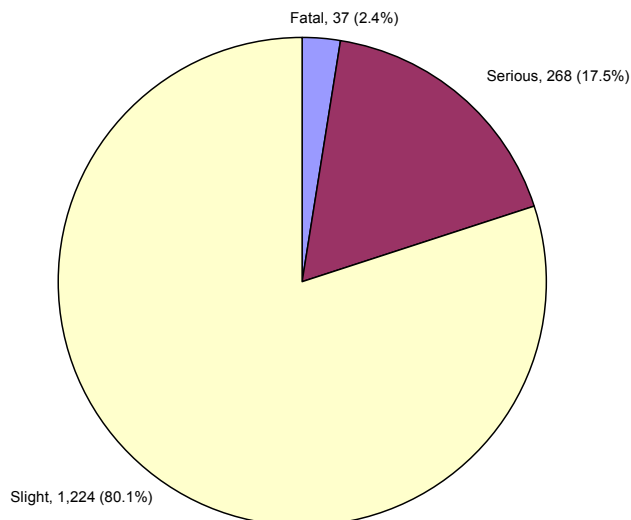
Graph G2: Breakdown of Accidents in which an Object has been struck in the Median – Refer to Table F2



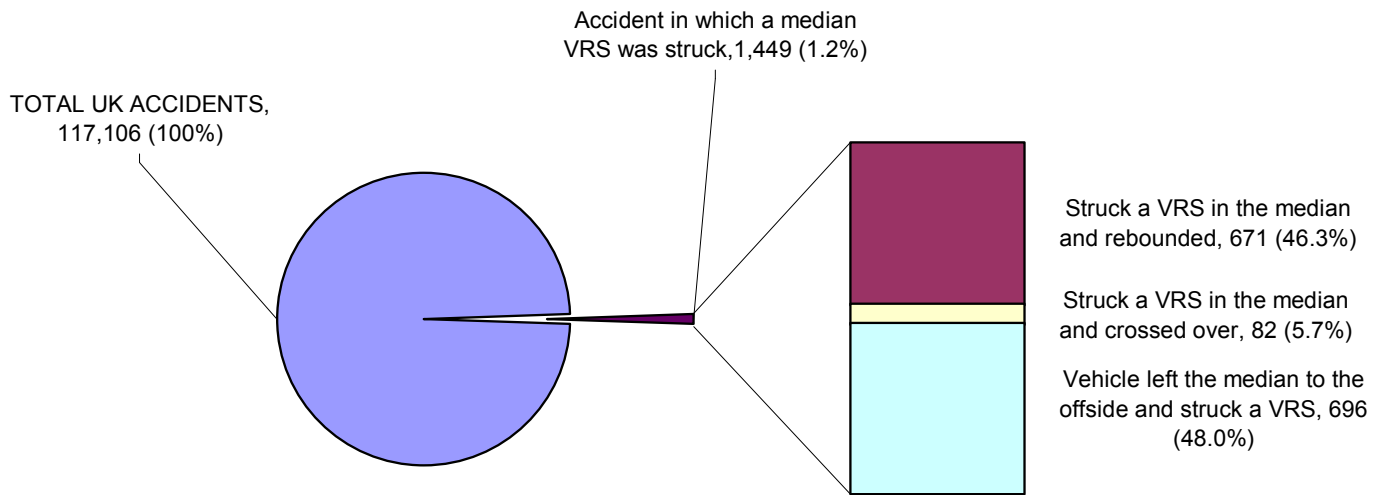
Graph G3: Severity of accidents in which an object is struck in the median and the vehicle is rebounded (total – 957)



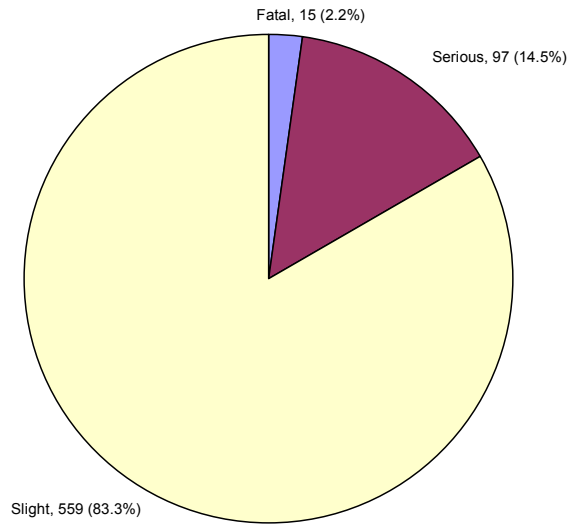
Graph G4: Severity of accidents in which an object is struck in the median and the vehicle crosses through the median (total – 414)



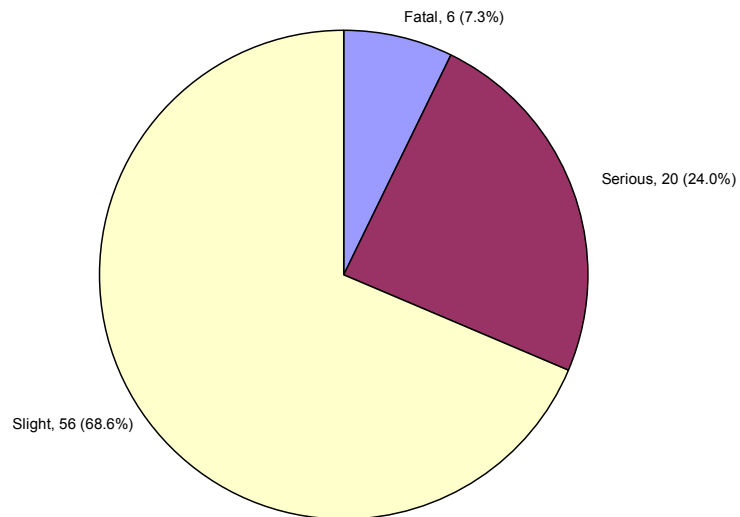
Graph G5: Severity of accidents in which an object is struck in the median and the vehicle is retained in the close vicinity of the median (total – 1,529)



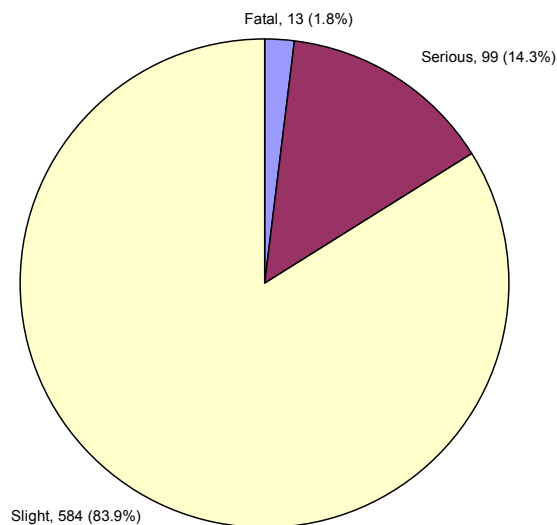
Graph G6: Breakdown of Accidents in which an Object has been struck in the Median – Refer to Table F3



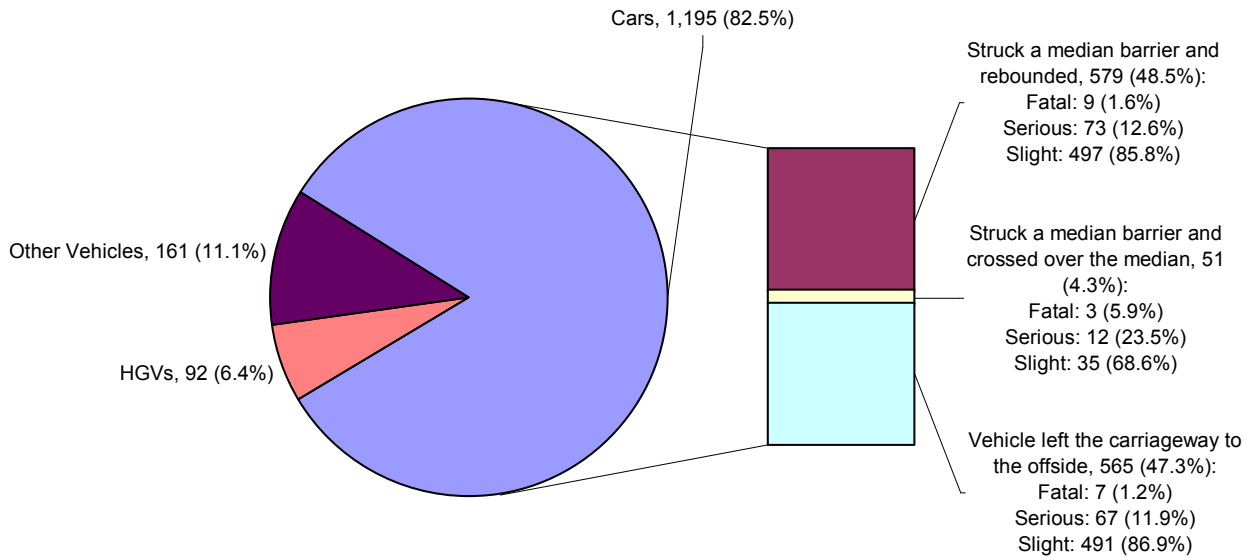
Graph G7: Severity of accidents in which a VRS is struck in the median and the vehicle is rebounded (total – 671)



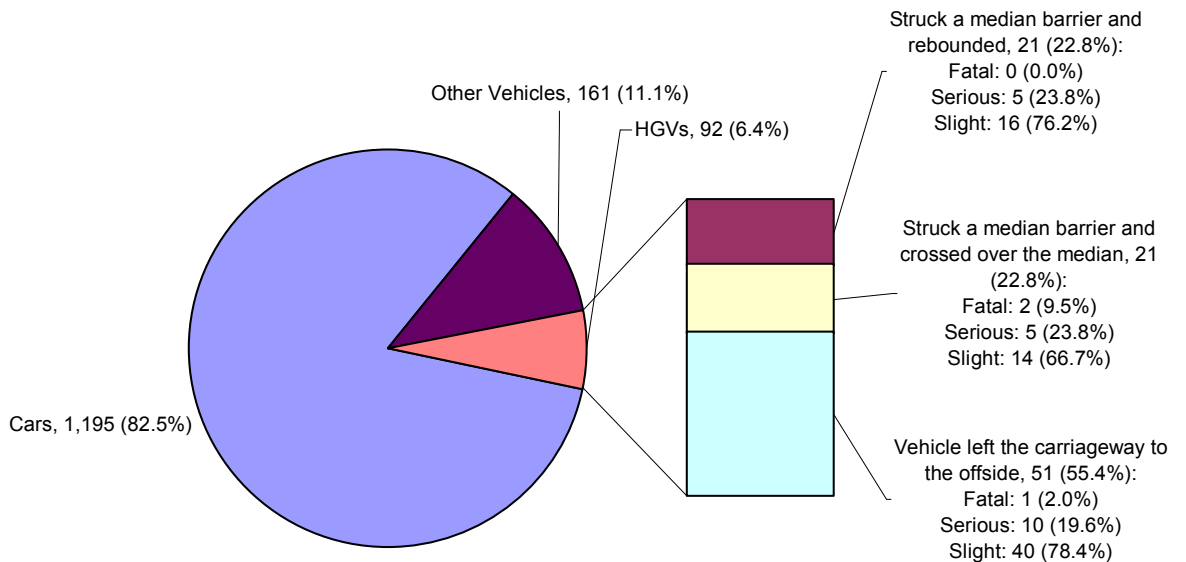
Graph G8: Severity of accidents in which a VRS is struck in the median and the vehicle crosses through the median (total – 82)



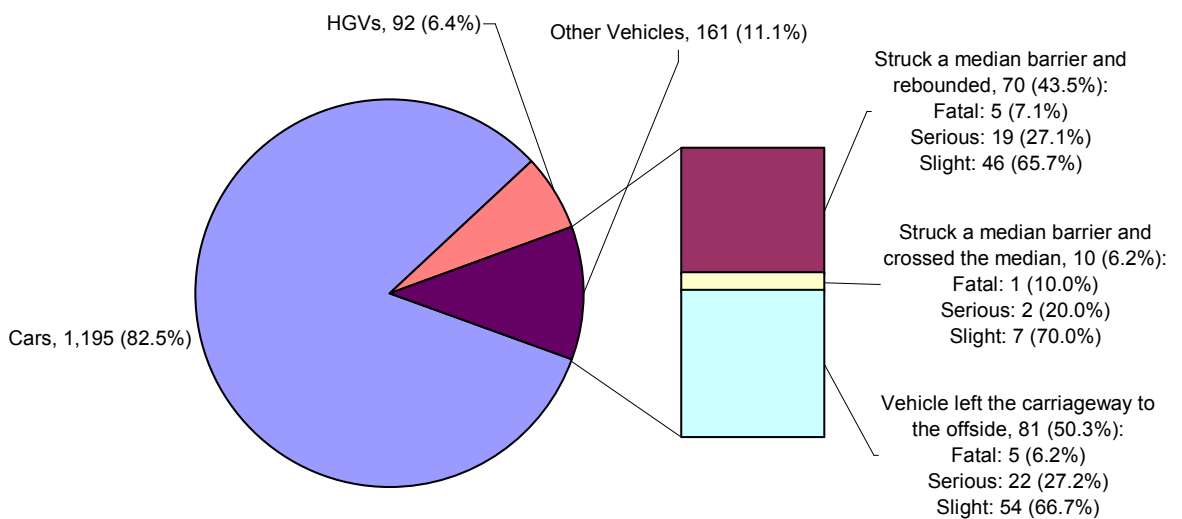
Graph G9: Severity of accidents in which a VRS is struck in the median and the vehicle is retained in the close vicinity of the median (total – 696)



Graph G10: Breakdown of accidents involving Cars impacting a median safety barrier



Graph G11: Breakdown of accidents involving HGVs impacting a median safety barrier



Graph G12: Breakdown of accidents involving 'Other Vehicles' impacting a median safety barrier