

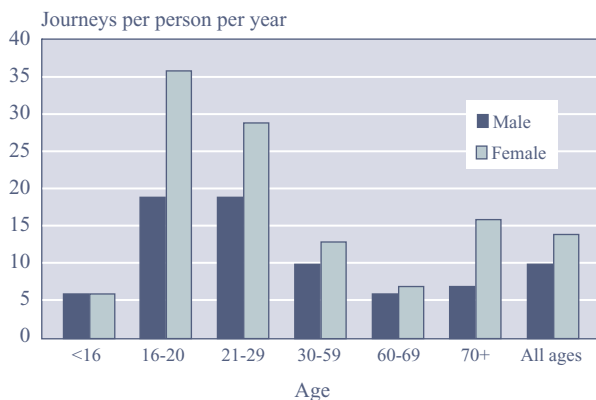
## Recent trends in taxi use

- Levels of taxi use have not changed much since the late-1980s. In 1999/2001, taxi and private hire vehicle use averaged 12 trips per person per year (1.2% of all trips), compared with 11 per year in 1989/1991 (1.0%).
- However, use of taxis is more widespread: 59% of people reported using a taxi at least once a year, compared with 51% in 1989/1991.
- The total distance travelled by taxi (including taxi stages made as part of a trip with another main mode) increased by almost a half from 42 miles per person per year in 1989/1991 to 61 miles in 1999/2001.
- The average length of a taxi trip in 1999/2001 was 4.7 miles, 40% longer than in 1989/1991 when the average was 3.4 miles. In contrast, the average length of all trips has increased by 13% over this period, from 5.9 miles to 6.7 miles.

## Who uses taxis?

- Women use taxis more than men: 11% of men and 13% of women in the National Travel Survey (NTS) sample said they used a taxi at least once a week.
- In every age group, women make more taxi trips than men (Chart 1). Taxi use is greatest among young people – for example, women aged 16-20 each make 36 taxi trips per year on average, compared with an average of 14 for all women. Taxi use declines with age until 70, after which it increases again.

**Chart 1 Taxi trips by age and sex: 1999/2001**



- Men make much longer taxi trips than women, averaging 5.8 miles compared with 4.0 miles for women.

*Note: Unless otherwise stated the figures quoted are an average of the years 1999-2001, and are derived from the National Travel Survey for Great Britain. 'Taxi' includes private hire vehicles (PHVs, also known as minicabs) unless otherwise stated. By law, taxis are allowed to 'ply for hire', but PHVs must be booked in advance*

## Car availability and taxi use

- Taxis are used more when no car is available. Adults (aged 17 and over) living in households without a car made more taxi trips on average than those living in households with a car: 30 trips a year (3.9% of all trips) compared with 9 (0.8%).
- In households with a car, the 'main drivers' made only 6 taxi trips a year, compared with 10 trips for 'other drivers', and 20 for non-drivers.

## Taxi use by income

- People in low income groups make most taxi trips. On average, people living in households in the lowest income quintile make 17 taxi trips a year (2.1% of all trips). The lowest use is recorded by those in the second highest income quintile, 10 trips a year, rising to 12 (1.0% of all trips) in the highest income group.
- The average length of taxi trips also varied by income. People in the lowest income quintile travelled 3.8 miles on average compared with 4.4 miles for those in the highest quintile. Those in the second highest group travelled furthest on average (8.2 miles per trip).

## Taxis used as part of journeys by other modes

- In addition to the 12 'main mode' taxi trips per person per year described in the rest of this factsheet, 1 taxi stage is made on average as part of a trip with another main mode. 7 out of 10 of these are part of a rail trip.

## Taxi use in urban and rural areas

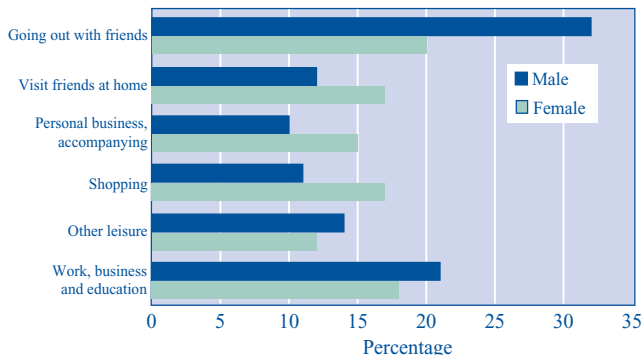
- Residents of the built-up areas of the former metropolitan counties used taxis most, averaging 17 trips a year per person (1.7% of all trips), compared with 15 trips a year for London residents, 10-13 in other urban areas, and 7 in villages and rural areas.

## Why do people use taxis?

- The four main reasons for a taxi trip were going out with friends (25% of taxi trips), visiting friends at home (15%), shopping (15%), and commuting (13%).

- The purposes of trips made by men and women differed (Chart 2). Nearly a third of men's taxi trips are to go out with friends, compared with a fifth of trips by women. Women are more likely to use taxis to visit friends in their homes, and for shopping trips.

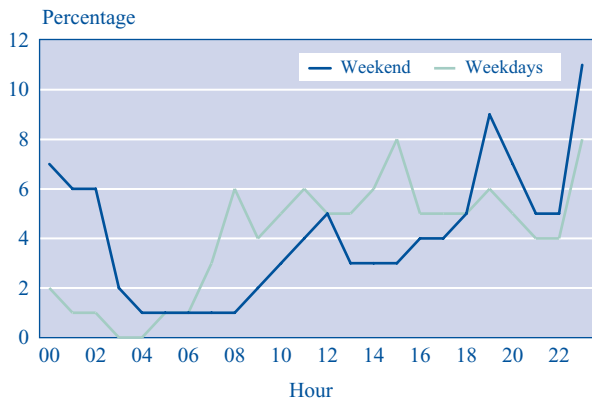
**Chart 2 Taxi trips by sex and purpose: 1999/2001**



### Taxi use by time and day

- Taxis are used least on Mondays and Tuesdays (11% of trips), increasing through the week to 18% of trips on Fridays, and 21% on Saturdays, with 13% of trips occurring on Sundays.

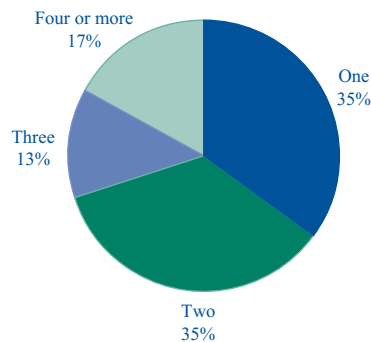
**Chart 3 Taxi trips by start time of day: 1999/2001**



- Patterns of use vary by the day of week (Chart 3). Weekdays have peaks of taxi trips starting from 8-9am (6% of the days' trips), from 11am-noon (6%), from 3-4pm (8%), from 7-8pm (6%) and from 11pm-midnight (8%). At weekends, the first peak is from 7-8pm (9%), followed by the main peak from 11pm-midnight (13%). Weekend taxi use continues into the early hours, with 6% of trips starting from 2-3am.

### Number of people sharing a taxi

**Chart 4 Number of passengers in taxi: 1999/2001**



- About a third of taxi trips (35%) were taken by one person alone, another third shared by two people (35%), and just under a third (30%) shared by parties of three or more (Chart 4). People in low income groups were a little more likely to travel in larger parties.

### Cost\* of taxi trips

- The average recorded cost of a taxi trip was £3.78 per person in 1999/2001. The average cost of trips by men was £4.52, compared with £3.30 for women, reflecting the greater distance they travelled.
- For single occupancy trips, the average GB cost was £4.77, with London residents paying £8.25.

### Taxis and private hire vehicles (PHVs)

- Taxis (rather than PHVs) accounted for 73% of taxi and PHV trips. PHV use was more common in London, metropolitan built-up areas and rural areas, where taxis were used for only about 6 in 10 of these trips.
- Women aged 16-29 were slightly more likely to use taxis than PHVs (77% of these trips) than women aged 30-59 (75%). There was little variation overall between men and women, or by age among men.
- PHV trips were longer than taxi trips: 6.3 miles compared with 4.1 miles.

\*Note these costs include tips. Trips where no cost was recorded are excluded from the analysis.

The text and charts are available from the DfT website at [www.transtat.dft.gov.uk/personal](http://www.transtat.dft.gov.uk/personal). Other NTS publications include 12 further factsheets on a number of topics; the main results of the NTS in "National Travel Survey: Update 1999/2001" and in "Focus on Personal Travel: 2001 Edition" (1998/2000 data) and the Technical Report. These are all available from the website. For further information, copies of the factsheets, Bulletin and any queries please contact [national.travelsurvey@dft.gov.uk](mailto:national.travelsurvey@dft.gov.uk) or telephone on 020 7944 3097.