

Annex 25 Examples of DEFRA noise maps

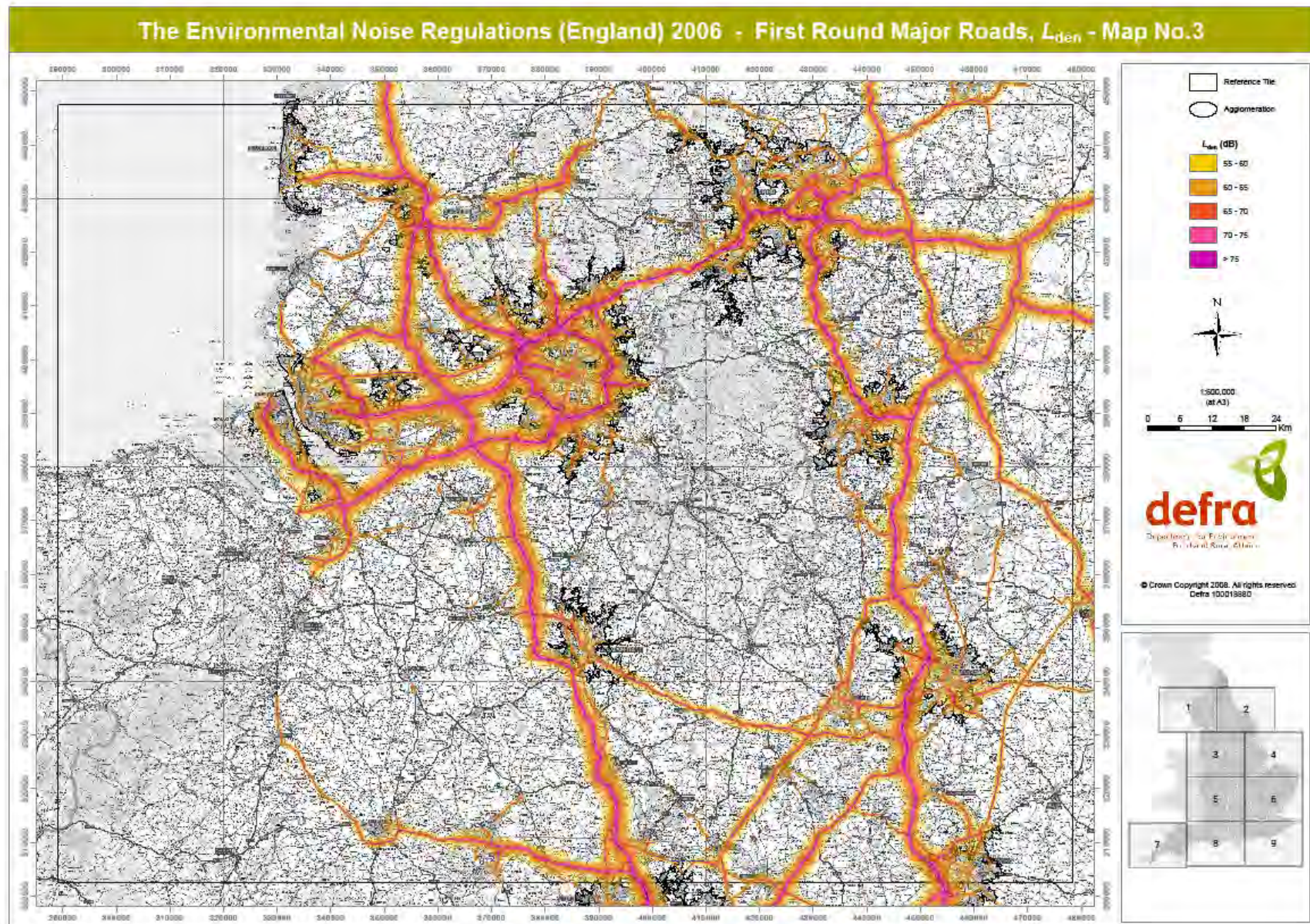
DEFRA produce noise maps to meet the requirements of the Environmental Noise (England) Regulations 2006. They are intended to inform the production of noise action plans for large urban areas, major transport sources, and significant industrial sites in England. They can be found at <http://noisemapping.defra.gov.uk/cara/wps/portal/noise>. This annex contains two examples of those maps.

Contents

Map A25.1	Noise mapping major roads in North West England and the Midlands, Decibels	2
Map A25.2	Noise contours at Leeds Bradford Airport, Decibels	3

Map A25.1 Noise mapping major roads in North West England and the Midlands, Decibels

DEFRA, 2008



Map A25.2 Noise contours at Leeds Bradford Airport, Decibels

DEFRA, 2008

