

Annex 2 Commuting trips to and from cities in each region

This annex contains eight maps, one for each English Government Office Region (GOR), excluding London.

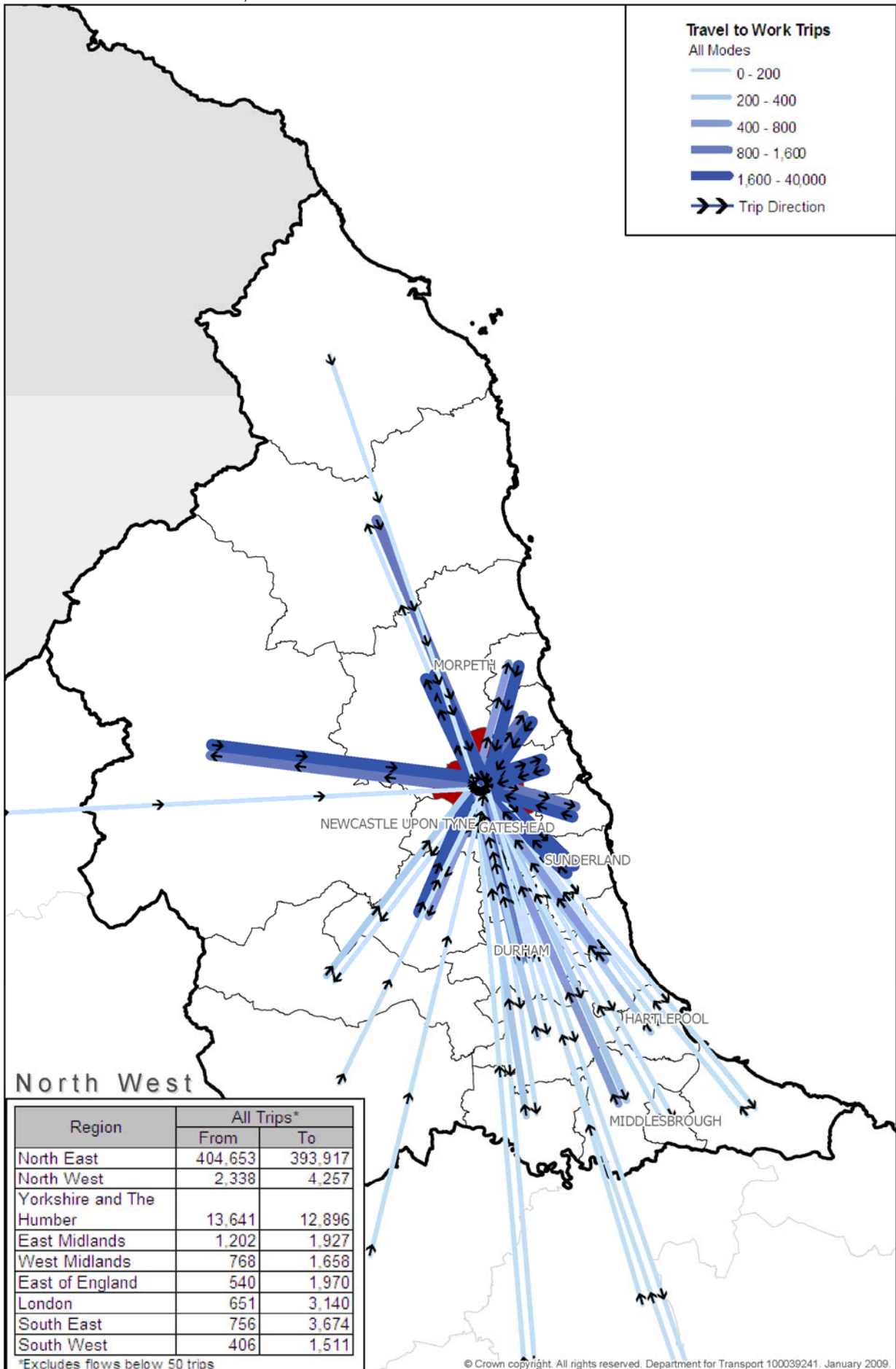
These maps are based on 2001 Census travel to work data from the Office of National Statistics (ONS).

Contents

Map A2.1	Commuting trips into and out of Newcastle upon Tyne	2
Map A2.2	Commuting trips into and out of Manchester	3
Map A2.3	Commuting trips into and out of Leeds.....	4
Map A2.4	Commuting trips into and out of Nottingham	5
Map A2.5	Commuting trips into and out of Birmingham.....	6
Map A2.6	Commuting trips into and out of Luton.....	7
Map A2.7	Commuting trips into and out of Portsmouth	8
Map A2.8	Commuting trips into and out of Bristol.....	9

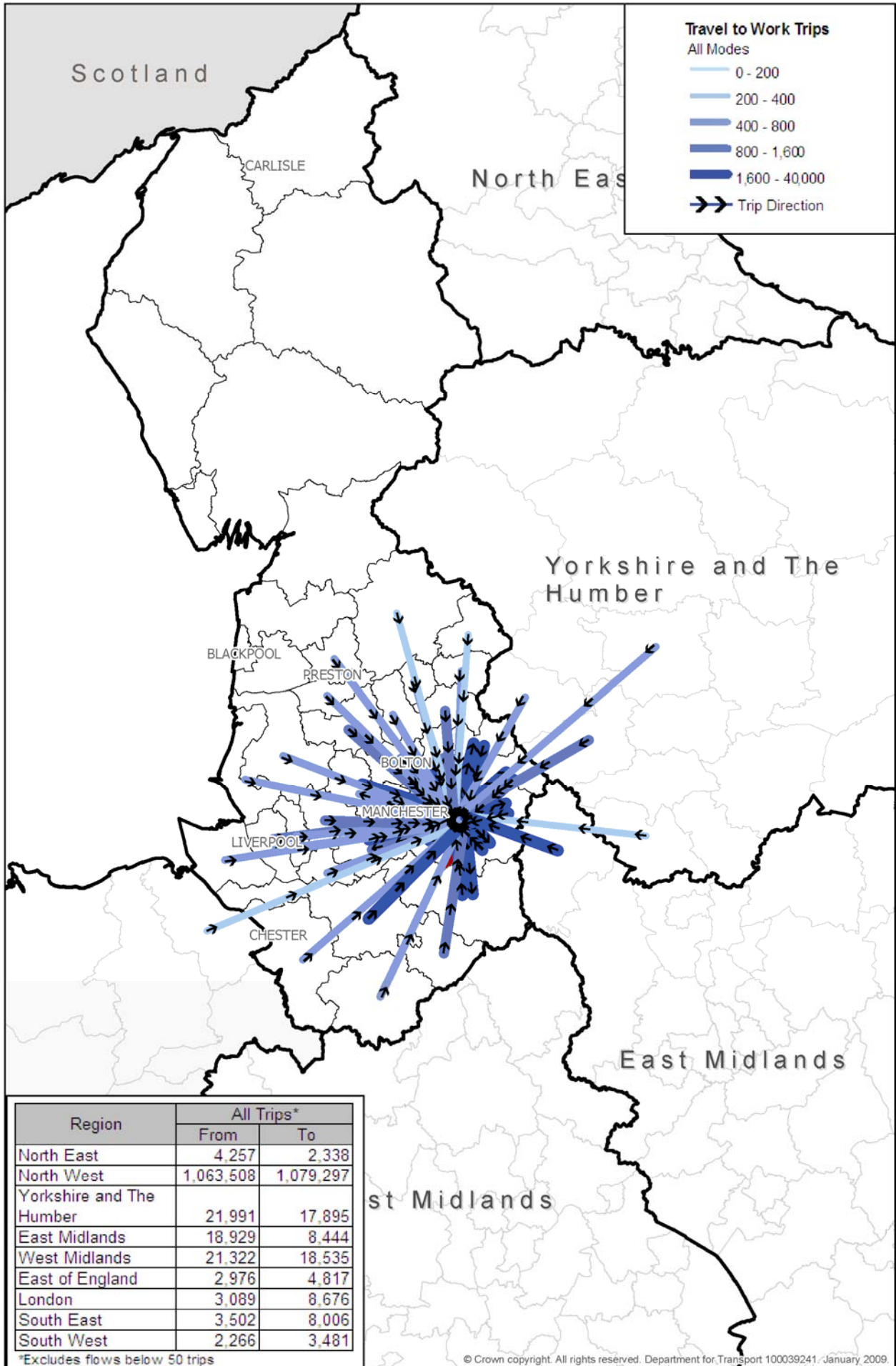
Map A2.1 Commuting trips into and out of Newcastle upon Tyne

2001 Census, ONS



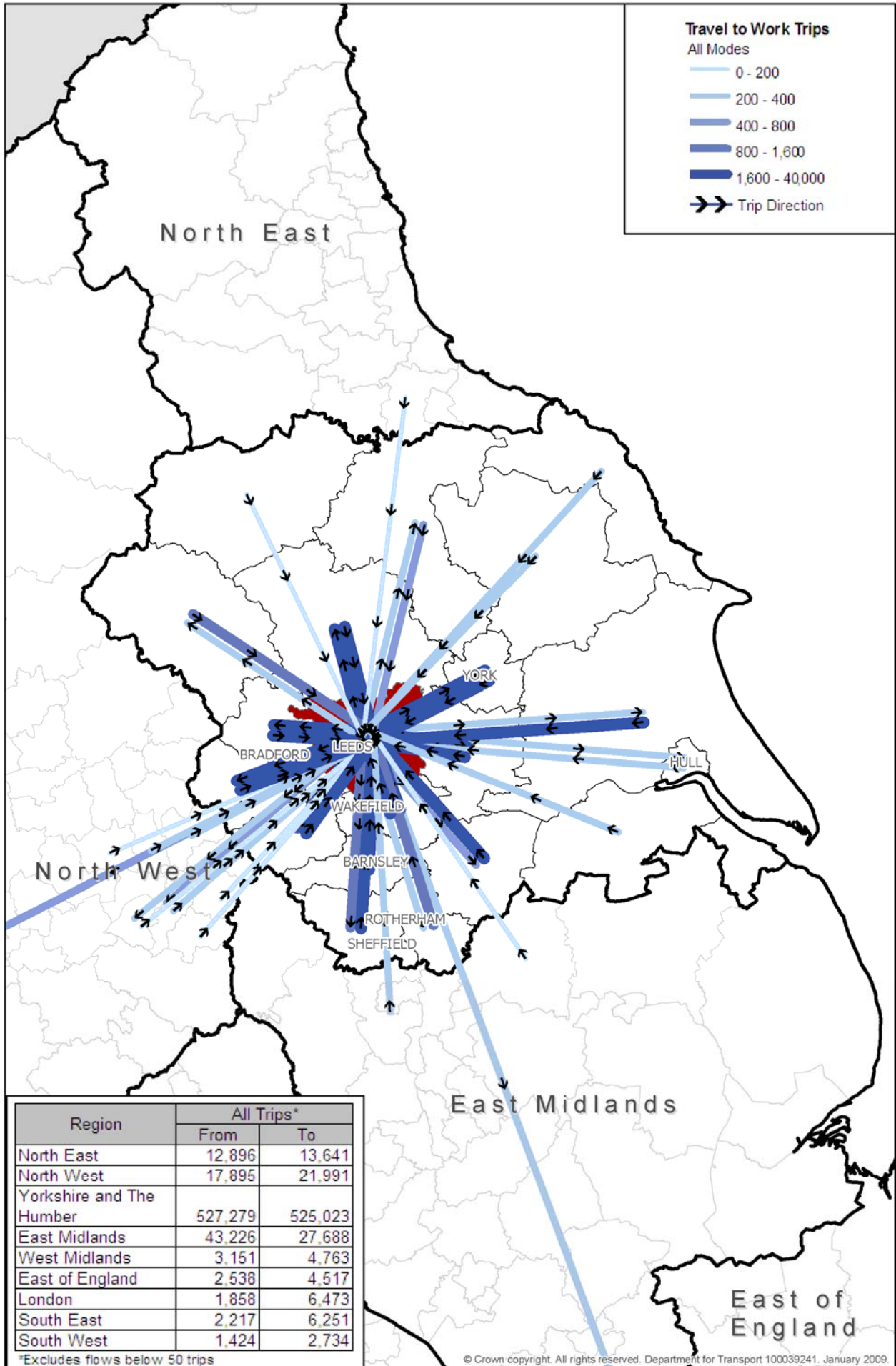
Map A2.2 Commuting trips into and out of Manchester

2001 Census, ONS



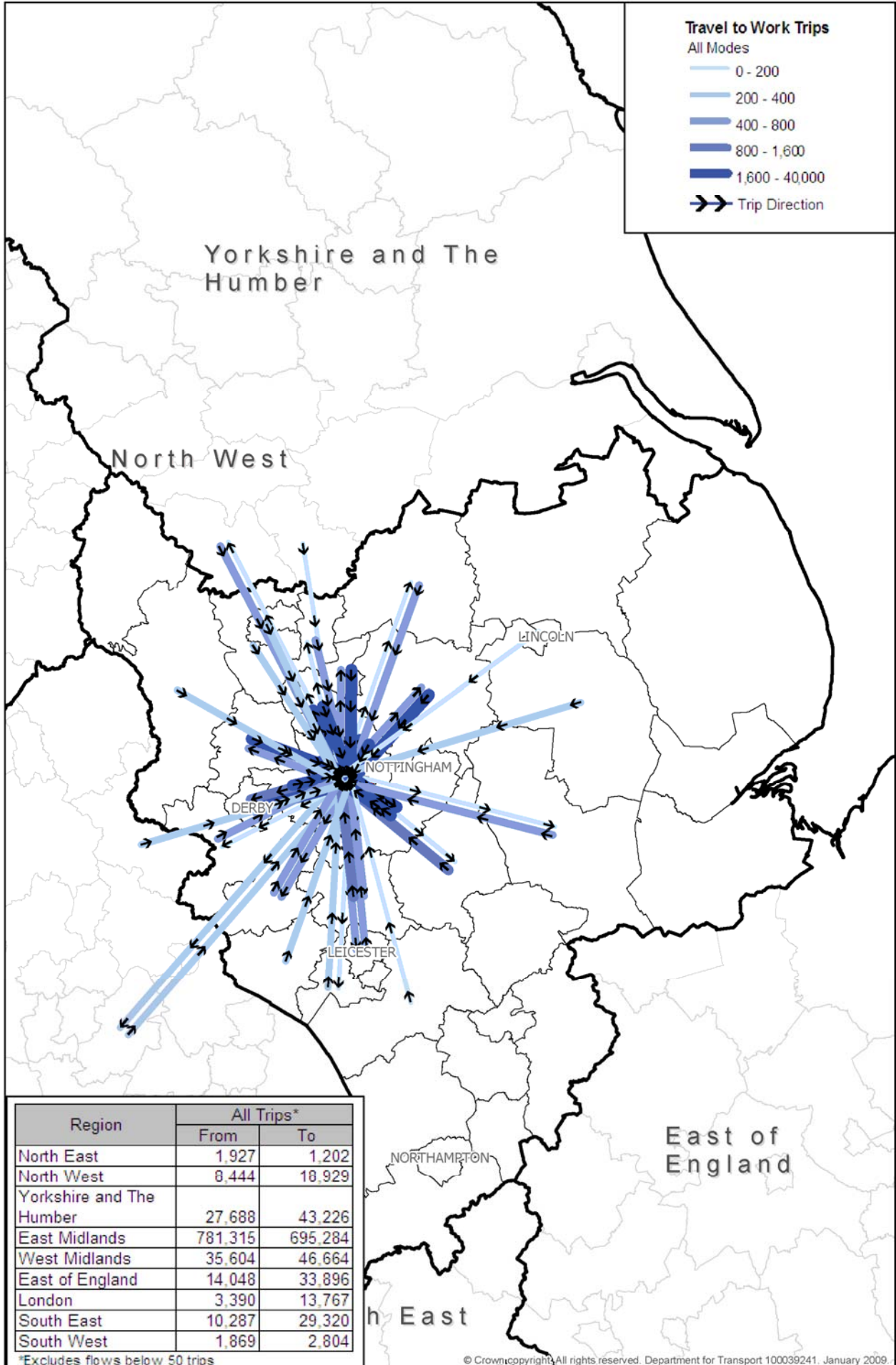
Map A2.3 Commuting trips into and out of Leeds

2001 Census, ONS



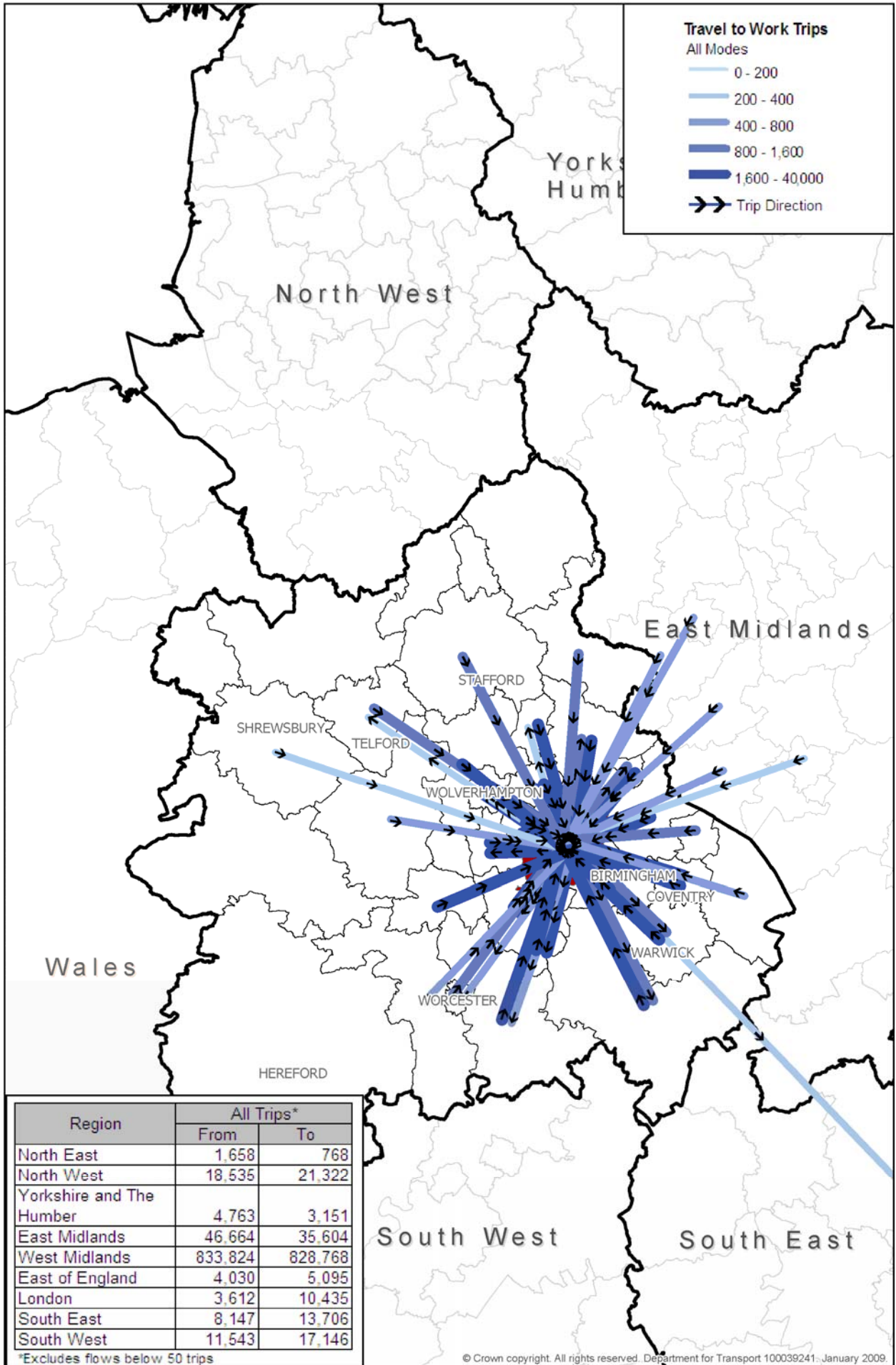
Map A2.4 Commuting trips into and out of Nottingham

2001 Census, ONS



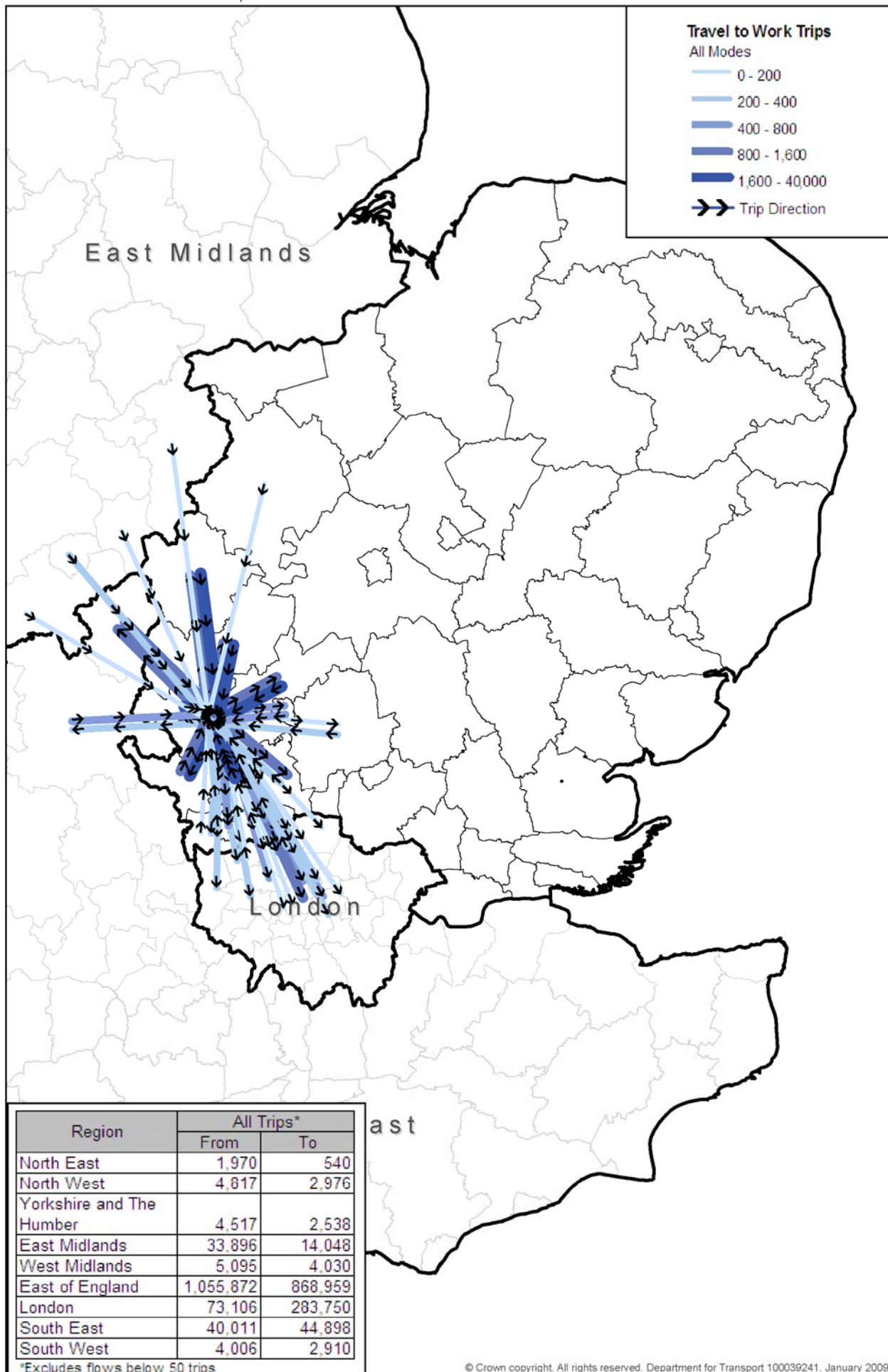
Map A2.5 Commuting trips into and out of Birmingham

2001 Census, ONS



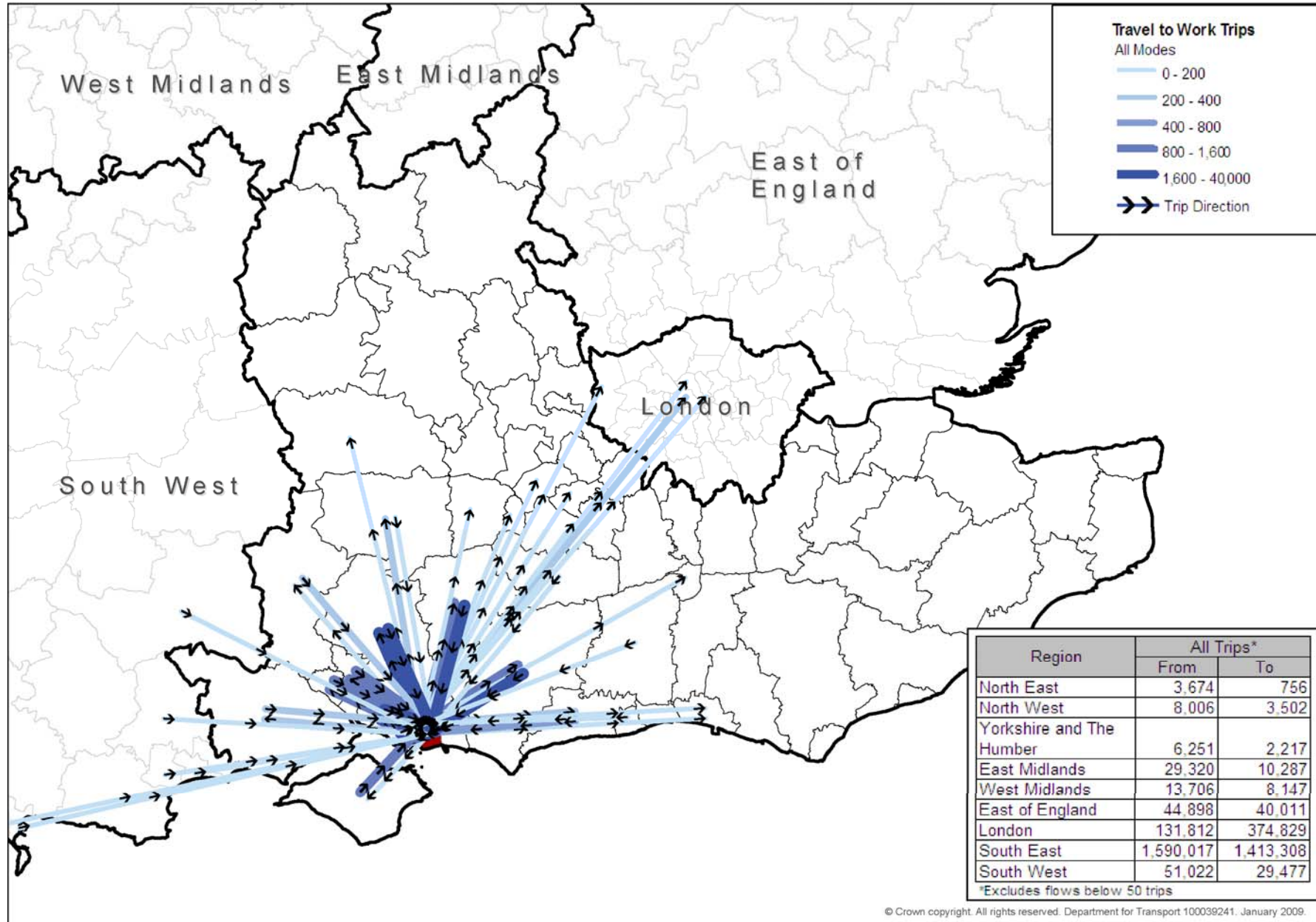
Map A2.6 Commuting trips into and out of Luton

2001 Census, ONS



Map A2.7 Commuting trips into and out of Portsmouth

2001 Census, ONS



Map A2.8 Commuting trips into and out of Bristol

2001 Census, ONS

