

Appendix 1: Tables

List of data tables

There are six data tables for each heading (e.g. 1.1, 1.2, 1.3 etc.). The data contained in these tables are as follows:

- x.1 by year
- x.2 by sex
- x.3 by age
- x.4 by region
- x.5 by socio-economic classification (NS-SEC group)
- x.6 by highest educational qualification

- 1 Respondents' attitudes towards levels of poverty in developing countries
- 2 Respondents' agreement with the statement "poverty in developing countries is a moral issue"
- 3 Respondents' agreement with the statement "poverty in developing countries could have consequences that may affect me personally"
- 4 Respondents' agreement with the statement "poverty in developing countries could have effects which damage the interests of this country"
- 5 Ways in which respondents thought that the United Kingdom can be affected by poverty in developing countries
- 6 Respondents' perception of the level of contribution towards the reduction of poverty by the United Nations, the International Monetary Fund and the World Bank, individual governments of richer countries, the European Union, governments of the developing countries themselves, international charities, business and private investors, and the World Trade Organisation.
- 7 (7.1 - 7.6) Respondents' perception of the level of commitment of the UK government to poverty reduction in developing countries

(7.7 - 7.12) Three ways in which respondents thought the UK government should be contributing to reducing poverty in developing countries
- 8 Extent to which respondents thought that each Millennium Development Goal would be achieved by 2015
- 9 Respondents' sources of information about the developing world
- 10 Ways in which the respondent, as an individual, felt that they could most effectively contribute to the reduction of poverty in developing countries

Appendix 2: The National Statistics Omnibus Survey

The Omnibus Survey is a multi-purpose survey carried out by the Office for National Statistics for use by Government departments and other public non-profit making bodies. Interviewing is carried out most months and each month's questionnaire covers a variety of topics, reflecting different users' requirements.

The Sample

Interviews are conducted with approximately 1,800 adult individuals (aged 16 or over) in private households in Great Britain each month. The Omnibus Survey uses the Postcode Address File of "small users" as its sampling frame, all private household addresses in Great Britain are included in this frame. A new sample of 100 postal sectors is selected each month and is stratified by: region; the proportion of households renting from local authorities; and the proportion in which the household reference person is in Socio-Economic Group 1-5 or 13 (i.e. a professional, employer or manager). The postal sectors are selected with probability proportionate to size and, within each sector, 30 addresses (delivery points) are selected randomly.

If an address contains more than one household, the interviewer uses a standard ONS procedure to randomly select just one household. Within households, with more than one adult member, just one person aged 16 or over is selected with the use of random number tables. The interviewers endeavour to interview that person - proxy interviews are not taken.

Weighting the data

Weighting factors are applied to Omnibus data to correct for unequal probability of selection caused by interviewing only one adult per household, or restricting the eligibility of the module to certain types of respondent. It should be noted that this weighting corrects for unequal probabilities of selection; it does not attempt to correct for any non-response bias.

Percentages shown in this report have been calculated using weighted data, while the bases shown in tables are the number of actual cases

Field Work

All interviews are carried out face-to-face by members of the general field force of interviewers trained to carry out National Statistics surveys. Advance letters are sent to all addresses, prior to the interview, giving a brief account of the survey. The interviewing period starts during the last two weeks of the month and continues into the first week of the following month. Interviewers call at all the selected addresses unless a refusal has been made beforehand in response to the advanced letter. The

interviewer makes at least three calls at an address at different times of the day and week before coding the household as a non-contact.

As with all National Statistics surveys, a quality check on field work is carried out through recall interviews with a proportion of respondents to make sure that the interviews actually took place with those respondents and that responses to questions are consistent.

Calculation of Response Rate

The small users' postcode address file includes some business addresses and other addresses, such as new and empty properties, at which no private households are living. The expected proportion of such addresses, which are classified as ineligible, is about 11-12%. They are eliminated from the set sample before response rates are calculated.

A responding individual may be ineligible for certain modules and may not have answered every single question.

Response Rate for July 2004

The response rate is calculated as the number of achieved interviews as a percentage of the eligible sample.

The response rate for July was 62% as shown below:

	Number	%
<i>Selected addresses</i>	<i>3,000</i>	<i>100</i>
Ineligible addresses	242	8
Eligible addresses	2758	92
<i>Refusals</i>	<i>769</i>	<i>28</i>
<i>Non-Contacts</i>	<i>281</i>	<i>10</i>
<i>Interviews Achieved</i>	<i>1708</i>	<i>62</i>

Of the 1708 respondents to the Omnibus survey, 1698 answered the module on attitudes to international development.

Appendix 3: Distribution of key respondent characteristics

There were 751 male and 947 female actual respondents giving a weighted equivalent of 775 male and 921 female respondents.

Figure 1 *Distribution of sex by age*

Great Britain: July 2004

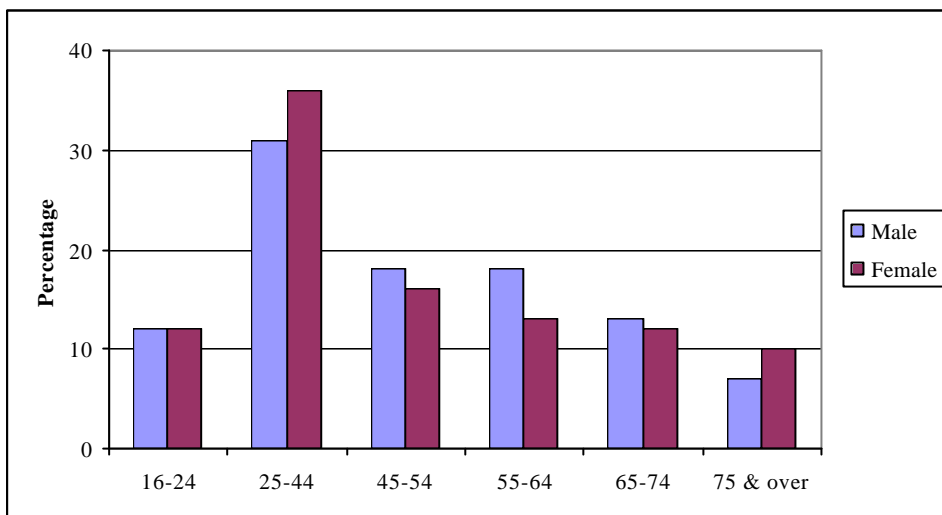


Figure 2 *Distribution of region*

Great Britain: July 2004

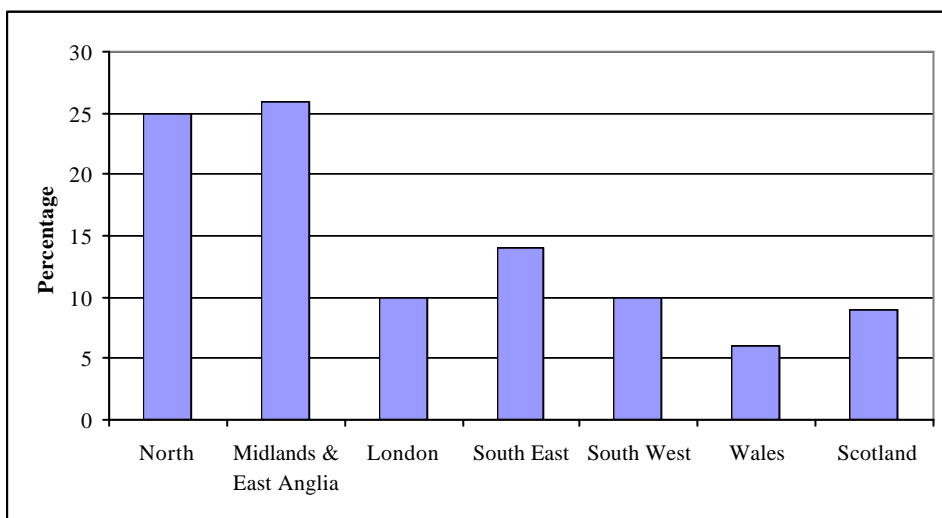


Figure 3 *Distribution of NS-SEC group*

Great Britain: July 2004

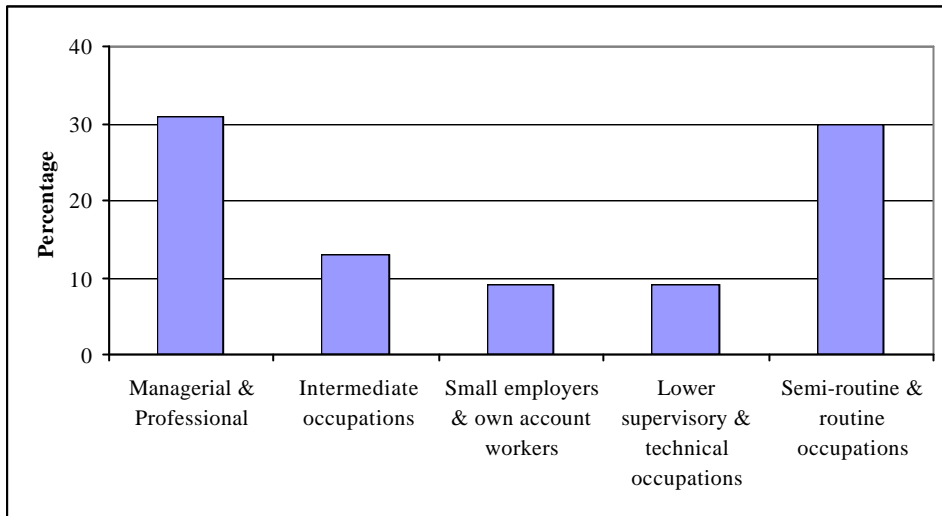
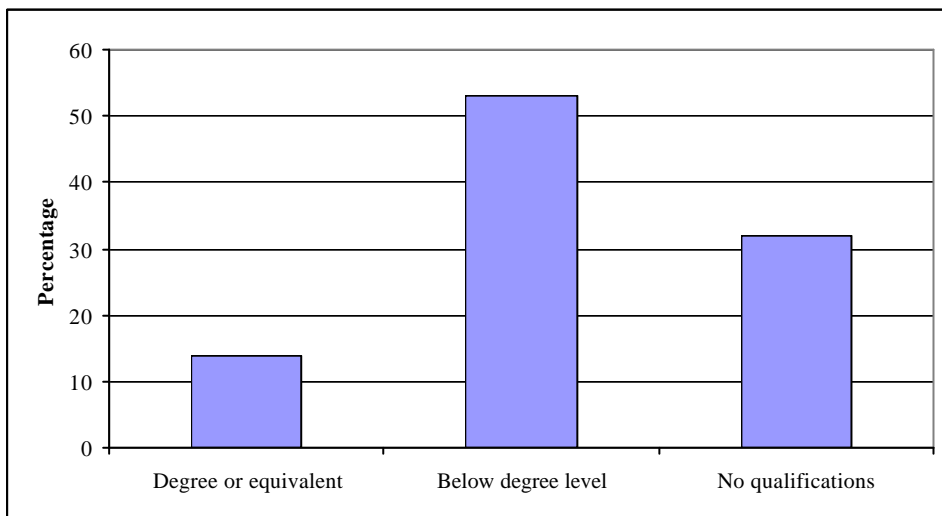


Figure 4 *Distribution of highest educational qualification*

Great Britain: July 2004



Appendix 4: The ONS Omnibus questionnaire

ASK ALWAYS:

INTRO

Now we have some questions that are being asked on behalf of the Department for International Development. They are about poverty in developing countries. By developing countries we mean poor countries in Africa, parts of Asia and regions such as Central America where substantial numbers of people live below the internationally recognised poverty line of less than 65p per day.

(1) Continue Press <1> to continue

ASK ALWAYS:

M236_1

SHOWCARD C236_1

* Which item on this card best describes how you feel about levels of poverty in developing countries?

- | | | |
|-----|----------|---------------------------------------|
| (1) | VConcer | Very concerned |
| (2) | FConcern | Fairly concerned |
| (3) | Neither | No strong feelings one way or another |
| (4) | NotVery | Not very concerned |
| (5) | NotAtAll | Not at all concerned |
| (6) | Q1DK | Don't Know (Spontaneous only) |
-

ASK ALWAYS:

INTRO2

I am going to read out three statements about poverty in developing countries and I would like you to tell me to what extent you agree or disagree with them, choosing your answers from the card.

(1) Continue Press <1> to continue

ASK ALWAYS:

M236_2

SHOWCARD C236_2

* 'Poverty in developing countries is a moral issue'

- | | | |
|-----|----------|-------------------------------|
| (1) | StronAg | Agree strongly |
| (2) | Agree | Agree |
| (3) | Neither | Neither agree nor disagree |
| (4) | Disagree | Disagree |
| (5) | DisStron | Disagree strongly |
| (6) | QAgreeDK | Don't Know (Spontaneous only) |

ASK ALWAYS:

M236_3

SHOWCARD C236_2

* 'Poverty in developing countries could have consequences that may affect me personally'

- | | | |
|-----|----------|-------------------------------|
| (1) | StronAg | Agree strongly |
| (2) | Agree | Agree |
| (3) | Neither | Neither agree nor disagree |
| (4) | Disagree | Disagree |
| (5) | DisStron | Disagree strongly |
| (6) | QAgreeDK | Don't Know (Spontaneous only) |

ASK ALWAYS:

M236_4

SHOWCARD C236_2

* 'Poverty in developing countries could have effects which damage the interests of this country'

- | | | |
|-----|----------|-------------------------------|
| (1) | StronAg | Agree strongly |
| (2) | Agree | Agree |
| (3) | Neither | Neither agree nor disagree |
| (4) | Disagree | Disagree |
| (5) | DisStron | Disagree strongly |
| (6) | QAgreeDK | Don't Know (Spontaneous only) |

ASK ALWAYS:

M236_5M

* In what ways, if any, do you think we in the United Kingdom can be affected by poverty in developing countries?

INTERVIEWER: If you code as 'Other ways' please record verbatim at next question

Code all that apply - Do not prompt

SET [12] OF

- | | | |
|------|----------|--|
| (1) | EarthEnv | By damaging the earth's environment |
| (2) | UKJobs | By affecting UK jobs and exports |
| (3) | War | By leading to conflict and war |
| (4) | Disease | Increasing risk of tropical / other diseases |
| (5) | Travel | Increasing the risks associated with foreign travel |
| (6) | Aid | Financial cost of providing aid/ cancelling debt |
| (7) | Immig | Immigration / refugees |
| (8) | Trade | Trade (general) |
| (9) | CheapImp | Cheap imports |
| (10) | Oblig | Feel obliged to do something |
| (11) | Global | Global effects |
| (12) | Oth5M | Other ways (Please record verbatim at next question) |
| (13) | NotAff | Not affected |

WARN IF: *NotAff IN M236_5M*
M236_5M.CARDINAL = 1

'Not affected' should be single coded

ASK IF: *Oth5M IN M236_5M*

Spec5M

INTERVIEWER: Please record other ways in which the UK might be affected verbatim.

Remember to recode into M236_5M, 1 to 11 where possible

STRING[255]

ASK ALWAYS:

INTRO7

SHOWCARD C236_7

The following organisations could all contribute to the reduction of poverty in developing countries.

* For each organisation please tell me whether you think it makes a major contribution, some contribution or little or no contribution to the reduction of poverty in developing countries.

(1) Continue Press <1> to continue

ASK ALWAYS:

M236_7

SHOWCARD C236_7

(* Please tell me whether you think it makes a major contribution, some contribution or little or no contribution to the reduction of poverty in developing countries).

... The United Nations (UN)?

- | | | |
|-----|---------|----------------------------|
| (1) | MajCon | A major contribution |
| (2) | SomeCon | Some contribution |
| (3) | LitCon | Little or no contribution |
| (4) | ConDk | Don't know (Do not prompt) |

ASK ALWAYS:

M236_8

SHOWCARD C236_7

(* Please tell me whether you think they make a major contribution, some contribution or little or no contribution to the reduction of poverty in developing countries).

... The International Monetary Fund (IMF) and the World Bank?

- | | | |
|-----|---------|----------------------------|
| (1) | MajCon | A major contribution |
| (2) | SomeCon | Some contribution |
| (3) | LitCon | Little or no contribution |
| (4) | ConDk | Don't know (Do not prompt) |

ASK ALWAYS:

M236_9

SHOWCARD C236_7

(* Please tell me whether you think they make a major contribution, some contribution or little or no contribution to the reduction of poverty in developing countries).

... Individual governments of richer countries like those in Western Europe, Japan, the United States and Australia?

- | | | |
|-----|---------|----------------------------|
| (1) | MajCon | A major contribution |
| (2) | SomeCon | Some contribution |
| (3) | LitCon | Little or no contribution |
| (4) | ConDk | Don't know (Do not prompt) |

ASK ALWAYS:

M236_10

SHOWCARD C236_7

(* Please tell me whether you think it makes a major contribution, some contribution or little or no contribution to the reduction of poverty in developing countries).

... The European Union (EU)?

- | | | |
|-----|---------|----------------------------|
| (1) | MajCon | A major contribution |
| (2) | SomeCon | Some contribution |
| (3) | LitCon | Little or no contribution |
| (4) | ConDk | Don't know (Do not prompt) |

ASK ALWAYS:

M236_11

SHOWCARD C236_7

(* Please tell me whether you think they make a major contribution, some contribution or little or no contribution to the reduction of poverty in developing countries).

... The governments of the developing countries themselves?

- | | | |
|-----|---------|----------------------------|
| (1) | MajCon | A major contribution |
| (2) | SomeCon | Some contribution |
| (3) | LitCon | Little or no contribution |
| (4) | ConDk | Don't know (Do not prompt) |

ASK ALWAYS:

M236_12

SHOWCARD C236_7

(* Please tell me whether you think they make a major contribution, some contribution or little or no contribution to the reduction of poverty in developing countries).

... International charities such as the Red Cross, OXFAM, or Save the Children Fund?

- | | | |
|-----|---------|----------------------------|
| (1) | MajCon | A major contribution |
| (2) | SomeCon | Some contribution |
| (3) | LitCon | Little or no contribution |
| (4) | ConDk | Don't know (Do not prompt) |

ASK ALWAYS:

M236_13

SHOWCARD C236_7

(* Please tell me whether you think they make a major contribution, some contribution or little or no contribution to the reduction of poverty in developing countries).

... Business and private investors?

- | | | |
|-----|---------|----------------------------|
| (1) | MajCon | A major contribution |
| (2) | SomeCon | Some contribution |
| (3) | LitCon | Little or no contribution |
| (4) | ConDk | Don't know (Do not prompt) |

ASK ALWAYS:

M236_14

SHOWCARD C236_7

(* Please tell me whether you think it makes a major contribution, some contribution or little or no contribution to the reduction of poverty in developing countries).

... The World Trade Organisation (WTO)?

- | | | |
|-----|---------|----------------------------|
| (1) | MajCon | A major contribution |
| (2) | SomeCon | Some contribution |
| (3) | LitCon | Little or no contribution |
| (4) | ConDk | Don't know (Do not prompt) |

ASK ALWAYS:

M236_15

* Do you think the level of commitment of the UK Government to poverty reduction in developing countries is ...

Running prompt

- | | | |
|-----|---------|----------------------------|
| (1) | Toohigh | too high, |
| (2) | TooLow | too low, |
| (3) | ABright | or about right? |
| (4) | Q15Dk | Don't know (Do not prompt) |

ASK ALWAYS:

M236_16

SHOWCARD C236_16

On this card is a list of ways in which the UK Government could contribute to reducing poverty in developing countries.

*I'd like you to tell me in which three ways, if any, you think they should be contributing to reducing poverty, starting with the most important and then the next most important and so on.

INTERVIEWER: Enter most important

- | | | |
|-----|---------|--|
| (1) | FinSupp | Providing financial support and other types of aid such as training and/or expertise |
| (2) | Intrade | Working for a fairer world trading system |
| (3) | RedWar | Encouraging increased private sector investment |
| (4) | War | Reducing conflict and war |
| (5) | ImpEff | Working to improve the effectiveness of international organisations like the World Bank, the UN and the European Union |
| (6) | Debt | Working to cancel the debts owed by developing countries |
| (7) | Q16Oth | Other (please specify) |
| (8) | Q16Non | None of these |

ASK IF: Other specified

Spec16

INTERVIEWER: Please specify other
Remember to recode into M236_16, 1 to 6 where possible

STRING[200]

ASK IF: Not none of these at M236_16

M236_17

SHOWCARD C236_16

* And what is the next most important?

- (1) FinSupp Providing financial support and other types of aid such as training and/or expertise
 - (2) Inctrade Working for a fairer world trading system
 - (3) RedWar Encouraging increased private sector investment
 - (4) War Reducing conflict and war
 - (5) ImpEff Working to improve the effectiveness of international organisations like the World Bank, the UN and the European Union
 - (6) Debt Working to cancel the debts owed by developing countries
 - (7) Q16Oth Other (please specify)
 - (8) Q16Non None of these
-

ASK IF: Not none of these at M236_16

AND: Other specified

Spec17

INTERVIEWER: Please specify other

Remember to recode into M236_16, 1 to 6 where possible

STRING[200]

ASK IF: Not none of these at M236_16

AND: Not none of these at M236_17

M236_18

SHOWCARD C236_16

* And can you tell me which is the third most important?

- (1) FinSupp Providing financial support and other types of aid such as training and/or expertise
- (2) Inctrade Working for a fairer world trading system
- (3) RedWar Encouraging increased private sector investment
- (4) War Reducing conflict and war
- (5) ImpEff Working to improve the effectiveness of international organisations like the World Bank, the UN and the European Union
- (6) Debt Working to cancel the debts owed by developing countries
- (7) Q16Oth Other (please specify)
- (8) Q16Non None of these

ASK IF: Not none of these at M236_16
AND: Not none of these at M236_17
AND: Other specified

Spec18

INTERVIEWER: Please specify other

Remember to recode into M236_16, 1 to 6 where possible

STRING[200]

WARN IF: Not none of these at M236_16
M236_16 <> M236_17

Different answers should be given at M236_16 & M236_17

WARN IF: Not none of these at M236_16
M236_16 <> M236_18

Different answers should be given at M236_16 & M236_18

WARN IF: Not none of these at M236_16
M236_17 <> M236_18

Different answers should be given at M236_17 & M236_18

ASK ALWAYS:

Intro19

Governments throughout the world have agreed a set of Millennium Development Goals which they have pledged to achieve by the year 2015.

I'm going to read out each of these Millennium Goals and I'd like you to say whether you think that the world's governments will achieve the goal by 2015, make significant progress towards achieving the goal by 2015, make some progress or will make no progress at all.

(1) Continue Press <1> to continue

ASK ALWAYS:

M236_19A

SHOWCARD C236_19

* The proportion of people who live in extreme poverty will be half what it was in 1990.

- | | | |
|-----|--------|---|
| (1) | Goal | Goal achieved by the year 2015 |
| (2) | Sig | Significant progress made towards achieving the goal by the year 2015 |
| (3) | sompro | Some progress made towards achieving the goal by the year 2015 |
| (4) | Nopro | No progress made towards achieving the goal by the year 2015 |
| (5) | Donk | Don't Know (Spontaneous only) |

ASK ALWAYS:

M236_19B

SHOWCARD C236_19

* Children everywhere will be able to complete a full course of primary schooling and that girls will have the same educational opportunities as boys.

- | | | |
|-----|--------|---|
| (1) | Goal | Goal achieved by the year 2015 |
| (2) | Sig | Significant progress made towards achieving the goal by the year 2015 |
| (3) | sompro | Some progress made towards achieving the goal by the year 2015 |
| (4) | Nopro | No progress made towards achieving the goal by the year 2015 |
| (5) | Donk | Don't Know (Spontaneous only) |
-

ASK ALWAYS:

M236_19C

SHOWCARD C236_19

* The proportion of children who die under the age of five will be reduced by two thirds.

- | | | |
|-----|--------|---|
| (1) | Goal | Goal achieved by the year 2015 |
| (2) | Sig | Significant progress made towards achieving the goal by the year 2015 |
| (3) | sompro | Some progress made towards achieving the goal by the year 2015 |
| (4) | Nopro | No progress made towards achieving the goal by the year 2015 |
| (5) | Donk | Don't Know (Spontaneous only) |
-

ASK ALWAYS:

M236_19D

SHOWCARD C236_19

* The proportion of women dying as a result of having children will be reduced by three quarters.

- | | | |
|-----|--------|---|
| (1) | Goal | Goal achieved by the year 2015 |
| (2) | Sig | Significant progress made towards achieving the goal by the year 2015 |
| (3) | sompro | Some progress made towards achieving the goal by the year 2015 |
| (4) | Nopro | No progress made towards achieving the goal by the year 2015 |
| (5) | Donk | Don't Know (Spontaneous only) |
-

ASK ALWAYS:

M236_19E

SHOWCARD C236_19

* Men and women of appropriate ages will have access to family planning services.

- | | | |
|-----|--------|---|
| (1) | Goal | Goal achieved by the year 2015 |
| (2) | Sig | Significant progress made towards achieving the goal by the year 2015 |
| (3) | sompro | Some progress made towards achieving the goal by the year 2015 |
| (4) | Nopro | No progress made towards achieving the goal by the year 2015 |
| (5) | Donk | Don't Know (Spontaneous only) |

ASK ALWAYS:

M236_19F

SHOWCARD C236_19

* The incidence of Malaria, HIV/AIDS and other major diseases will have begun to decline.

- | | | |
|-----|--------|---|
| (1) | Goal | Goal achieved by the year 2015 |
| (2) | Sig | Significant progress made towards achieving the goal by the year 2015 |
| (3) | sompro | Some progress made towards achieving the goal by the year 2015 |
| (4) | Nopro | No progress made towards achieving the goal by the year 2015 |
| (5) | Donk | Don't Know (Spontaneous only) |
-

ASK ALWAYS:

M236_19G

SHOWCARD C236_19

* Current trends in the loss of environmental resources will be effectively reversed.

- | | | |
|-----|--------|---|
| (1) | Goal | Goal achieved by the year 2015 |
| (2) | Sig | Significant progress made towards achieving the goal by the year 2015 |
| (3) | sompro | Some progress made towards achieving the goal by the year 2015 |
| (4) | Nopro | No progress made towards achieving the goal by the year 2015 |
| (5) | Donk | Don't Know (Spontaneous only) |
-

ASK ALWAYS:

M236_19H

SHOWCARD C236_19

* A global partnership for development will be established to promote fair trade and tackle the debt problems facing developing countries.

- | | | |
|-----|--------|---|
| (1) | Goal | Goal achieved by the year 2015 |
| (2) | Sig | Significant progress made towards achieving the goal by the year 2015 |
| (3) | sompro | Some progress made towards achieving the goal by the year 2015 |
| (4) | Nopro | No progress made towards achieving the goal by the year 2015 |
| (5) | Donk | Don't Know (Spontaneous only) |

ASK ALWAYS:

M236_24M

How, if at all, do you personally find out what is happening in developing countries?

Code up to three responses

SET [3] OF

- | | | |
|------|----------|-----------------------------------|
| (1) | TV | TV News |
| (2) | TVoth | Other TV programmes |
| (3) | Radio | Radio |
| (4) | NewsMags | Newspapers/magazines |
| (5) | Educatio | School/education |
| (6) | Church | Church or other religious groups |
| (7) | Charity | Charities |
| (8) | Books | Books |
| (9) | Travel | Foreign travel / holidays |
| (10) | Famfrnd | Family or friends |
| (11) | Internt | Internet |
| (12) | Films | Films at cinema |
| (13) | Q24Oth | Other (please specify) |
| (14) | Q24Non | I don't find out what's happening |

WARN IF: Q24Non IN M236_24M

M236_24M.CARDINAL = 1

'I don't find out what's happening' should be single coded

ASK IF: Other specified

SPEC24

INTERVIEWER: Please specify other

Remember to recode into M236_24M, 1 to 12 where possible

STRING[150]

ASK ALWAYS:

M236_25M

SHOWCARD C236_25M

* In which ways, if any, do you think you as an individual can most effectively contribute to reducing poverty in developing countries? Please choose up to three ways. Starting with the most important and then the next most important and so on.

INTERVIEWER: Code up to three only

SET [3] OF

- | | | |
|------|----------|---|
| (1) | Pay | Paying taxes - a proportion of which is spent on International Aid by the Government |
| (2) | Don | Donating to charities or other appeals on behalf of developing countries |
| (3) | Sup | Supporting socially responsible business and investment |
| (4) | Buy | Buying Fair trade goods |
| (5) | Work | Working in a developing country to promote development |
| (6) | Being | Being involved in church or campaign groups working on behalf of developing countries |
| (7) | Putting | Putting pressure on politicians to increase the assistance which the Government gives to developing countries |
| (8) | Travelli | Travelling to a developing country as a tourist |
| (9) | Other | Other (please specify) |
| (10) | Donot | Do not think can contribute effectively as an individual to reducing poverty in developing countries (Spontaneous only) |

WARN IF: *Donot IN M236_25M*

M236_25M.CARDINAL = 1

'Do not think can contribute effectively as an individual to reducing poverty in developing countries' should be single coded'

ASK IF: *Other IN M236_25M*

Spec25

INTERVIEWER: Record other way (s).

Please remember to recode into M236_25M where possible

STRING[255]