

Appendix 1 Tables

List of data tables

There are six data tables for each heading (e.g. 1.1, 1.2, 1.3 etc.). The data contained in these tables are as follows:

- x.1 by year
- x.2 by sex
- x.3 by age
- x.4 by region
- x.5 by socio-economic classification (NS-SEC group)
- x.6 by highest educational qualification

- 1 Respondents' attitudes towards levels of poverty in developing countries
- 2 Respondents' agreement with the statement "Poverty in developing countries is a moral issue"
- 3 Respondents' agreement with the statement "Poverty in developing countries could have consequences that may affect me personally"
- 4 Respondents' agreement with the statement "Poverty in developing countries could have effects which damage the interests of this country"
- 5 Ways in which respondents thought that the United Kingdom can be affected by poverty in developing countries
- 6 Respondents' perception of the level of contribution towards the reduction of poverty by the United Nations, the International Monetary Fund and the World Bank, individual governments of richer countries, the European Union, governments of the developing countries themselves, international charities, business and private investors, and the World Trade Organisation.
- 7 (7.1 - 7.6) Respondents' perception of the level of commitment of the UK government to poverty reduction in developing countries

 (7.7 - 7.12) Three ways in which respondents thought the UK government should be contributing to reducing poverty in developing countries
- 8 Extent to which respondents thought that each Millennium Development Goal would be achieved by 2015
- 9 Respondents' sources of information about the developing world
- 10 Ways in which the respondent, as an individual, felt that they could most effectively contribute to the reduction of poverty in developing countries

Summary table of significant sex, age, region, NS-SEC group and highest educational qualification effect

Variable	Sex	Age	Region	NS-SEC	Highest educational qualification
M236_1 Level of concern about poverty	*	*	*	*	*
M236_2 Is poverty a moral issue	*	*	*	*	*
M236_3 Impact of poverty on the respondent	*	*		*	*
M236_4 Impact on this country	*	*		*	*
M236_5 How might this country be affected	*	*	*	*	*
Contributions to the reduction of poverty by:-					
M236_7 United Nations	*	*			*
M236_8 The IMF and World Bank	*	*		*	*
M236_9 Governments of richer countries	*	*		*	*
M236_10 The European Union	*	*		*	*
M236_11 Governments of developing countries	*	*	*	*	*
M236_12 International Charities	*	*			*
M236_13 Business and private investors	*	*		*	*
M236_14 The World Trade Organisation	*	*		*	*
M236_15 UK government contribution	*	*	*	*	*
M236_16-M236_18 Most important strategies for reducing poverty	*	*	*	*	*
Expectation of meeting Millennium Development Goals:-					
M236_19a Lifting 600 million people out of poverty	*	*	*		*
M236_19b Access to primary education	*	*	*	*	*
M236_19c Reduction in mortality of under 5s	*	*	*	*	*
M236_19d Reduction of deaths from child birth	*	*	*	*	*
M236_19e Access to family planning services	*	*	*	*	*
M236_19f Incidence of major diseases will have begun to decline	*	*	*		*
M236_19g Loss of environmental resources will be reversed	*	*	*		*
M236_19h Global partnership will be established	*	*	*	*	*
M236_24 Sources of information	*	*	*	*	*
M236_25 Ways of helping developing countries	*	*	*	*	*

Appendix 2: The Omnibus Survey

The Omnibus Survey is a multi-purpose survey carried out by the Office for National Statistics for use by Government departments and other public or non-profit making bodies. Interviewing is carried out most months and each month's questionnaire covers a variety of topics, reflecting different user's requirements.

The sample

A random probability sample of 3,000 private households in Great Britain is selected each month using the Postcode Address File as a sampling frame. One hundred new postal sectors are selected and are stratified by region, the proportion of households renting from the local authorities and the proportion in which the head of household is in Socio-Economic Groups 1-5 or 13 (that is a professional employer or manager). The postal sectors are selected with probability proportional to size and within each sector 30 addresses are selected randomly.

At multi-household addresses, interviewers use a standard ONS procedure to select just one household randomly. Within households with more than one adult, one person aged 16 or over is randomly selected for interview. No proxy interviews are taken.

Weighting

Because only one household member is interviewed at each address, people in households containing few adults have a higher probability of selection than those in households with many. Where the unit of analysis is individual adults, as it is for this module, a weighting factor is applied to correct for this unequal probability of selection. Percentages shown in this report have been calculated using weighted data, while the bases shown in the Tables are the number of actual cases within each category.

Fieldwork

Interviews are carried out in respondents' homes by interviewers who have been trained to carry out a range of ONS surveys. Advance letters are sent to all addresses giving a brief account of the survey. Interviewers must make at least three to four calls at an address at different times of the day and week.

As with all ONS surveys, a quality check on fieldwork is carried out through recall interviews with a proportion of respondents.

The Omnibus Survey uses computer assisted interviewing which has well documented effects on the quality of the data.

Questions

The module of questions (which are shown in appendix 3) was developed in conjunction with the Department for International Development.

Response Rates

The small users' Postal Address File includes some business addresses and other addresses, such as new and empty properties, at which no private households are living. The expected proportion of such addresses, which are classified as ineligible, is about 11-12%. This figure is removed before the response rate is calculated.

The response rate for the July 2003 Omnibus survey was 68%, as shown below:

Set sample	3,000	100%
Ineligible addresses	261	9%
Eligible addresses	2,739	100%
Refusals	663	24%
Non-contacts	300	11%
Respondents	1,776	68%

A total of 1,772 interviewees (more than 99% of the total sample) responded to at least one question concerning poverty in developing countries.

Note on socio-economic classification

From April 2001 the National Statistics social-economic Classification (NS-NSEC) was used for all official statistics and surveys. It replaced Social Class based on Occupation (SC, formerly Registrar General's Social Class) and socio-economic Groups (SEG).

In the past, this series of reports has presented information on public attitudes towards developing countries by grouping Social Class into non-manual and manual classes.

The table below provides examples of occupations within each NS-SEC group.

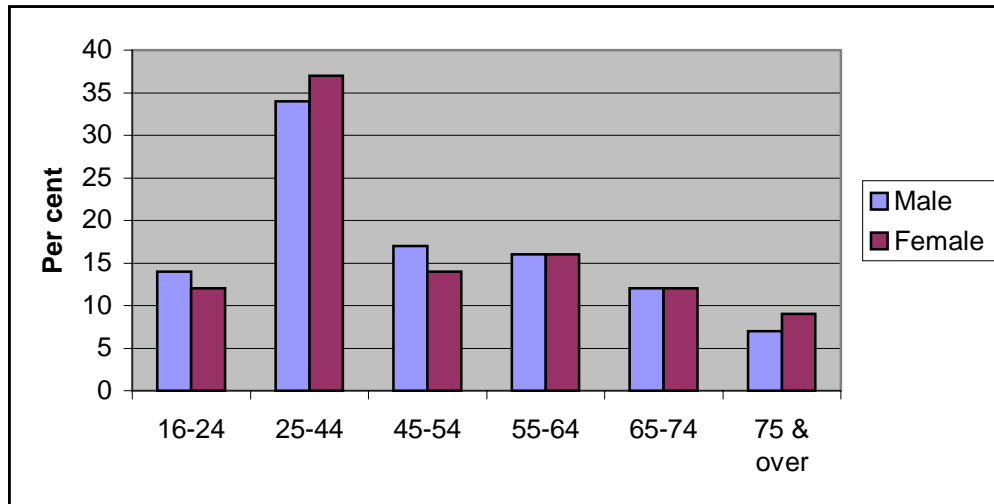
Managerial & professional occupations	Accountant, artist, civil engineer, medical practitioner, musician, nurse, police officer (sergeant or above), physiotherapist, scientist, social worker, software designer, solicitor, teacher, welfare officer. Those usually responsible for planning, organising and co-ordinating work and for finance - e.g. finance manager, chief executive
Intermediate occupations	Call centre agent, clerical worker, nursery nurse, nursing auxillary, office clerk, secretary
Small employers & own account workers	Farmer, hairdresser, publican, shopkeeper, taxi driver, window cleaner
Lower supervisory technical occupations	Electrician, fitter, gardener, inspector, plumber, printer, train driver, tool maker
Semi-routine & routine occupations	Bar staff, caretaker, catering assistant, cleaner, farm worker, HGV driver, labourer, machine operative, messenger, packer, porter, postal worker, receptionist, sales assistant, security guard, sewing machinist, van driver, waiter/waitress

The same job title could appear in different NS-SEC classifications depending upon the employment conditions.

Appendix 3: Distribution of key respondent characteristics

There were 823 male and 949 female actual respondents giving a weighted equivalent of 872 male and 901 female respondents.

Figure 1 Distribution of sex by age



(Base: All n=1772)

Figure 2 Distribution of region

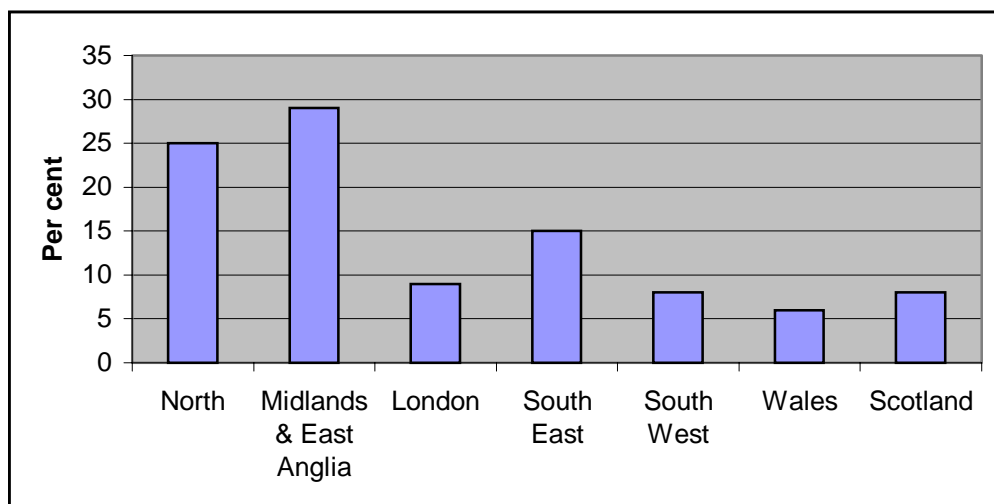


Figure 3 *Distribution of NS-SEC group*

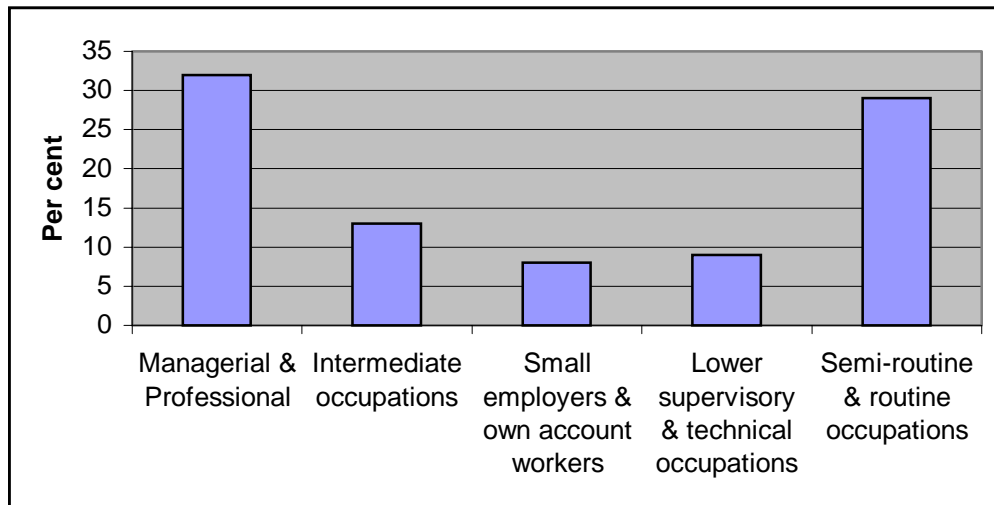
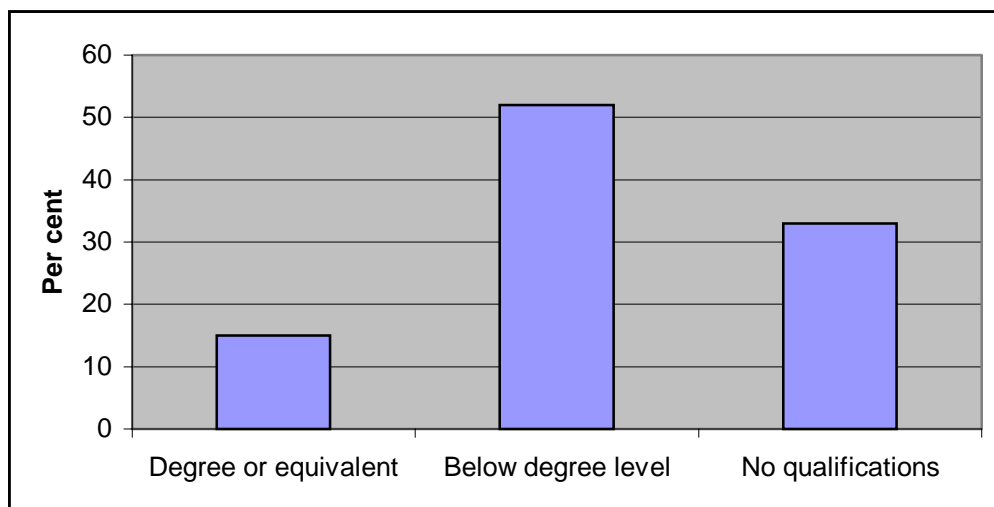


Figure 4 *Distribution of highest educational qualification*



Appendix 4: The ONS Omnibus questionnaire

DFID Module 236

Public Attitudes towards development

ASK ALWAYS:

INTRO

Now we have some questions that are being asked on behalf of the Department for International Development. They are about poverty in developing countries. By developing countries we mean poor countries in Africa, parts of Asia and regions such as Central America where substantial numbers of people live below the internationally recognised poverty line of less than 65p per day.

(1) PRESS <1> TO CONTINUE

ASK ALWAYS:

M236_1

SHOWCARD C236.1

[*] Which item on this card best describes how you feel about levels of poverty in developing countries?

- (1) Very Concerned
 - (2) Fairly concerned
 - (3) No strong feelings one way or another
 - (4) Not very concerned
 - (5) Not at all concerned
 - (6) Don't Know (Spontaneous)
-

ASK ALWAYS:

INTRO2

I am going to read out three statements about poverty in developing countries and I would like you to tell me to what extent you agree or disagree with them, choosing your answers from the card.

(1) PRESS <1> TO CONTINUE

ASK ALWAYS:

M236_2

SHOWCARD C236.2

[*] 'Poverty in developing countries is a moral issue'

- (1) Agree strongly
 - (2) Agree
 - (3) Neither agree nor disagree
 - (4) Disagree
 - (5) Disagree strongly
 - (6) Don't Know
-

ASK ALWAYS:

M236_3

SHOWCARD C236.2

[*] 'Poverty in developing countries could have consequences that may affect me personally'

- (1) Agree strongly
 - (2) Agree
 - (3) Neither agree nor disagree
 - (4) Disagree
 - (5) Disagree strongly
 - (6) Don't Know
-

ASK ALWAYS:

M236_4

SHOWCARD C236.2

[*] 'Poverty in developing countries could have effects which damage the interests of this country'

- (1) Agree strongly
- (2) Agree
- (3) Neither agree nor disagree
- (4) Disagree
- (5) Disagree strongly
- (6) Don't Know

ASK ALWAYS:

M236_5M

[*] In what ways, if any, do you think we in the United Kingdom can be affected by poverty in developing countries?

INTERVIEWER: CODE ALL THAT APPLY - DO NOT PROMPT

IF YOU CODE AS 'OTHER WAYS' PLEASE RECORD VERBATIM AT NEXT QUESTION

SET [12] OF

- (1) By damaging the earth's environment
- (2) By affecting UK jobs and exports
- (3) By leading to conflict and war
- (4) Increasing risk of tropical / other diseases
- (5) Increasing the risks associated with foreign travel
- (6) Financial cost of providing aid/ cancelling debt
- (7) Immigration / refugees
- (8) Trade (general)
- (9) Cheap imports
- (10) Feel obliged to do something
- (11) Global effects
- (12) Other ways - INTERVIEWER PLEASE RECORD VERBATIM AT NEXT QUESTION
- (13) Not affected

ASK IF: *Oth5M IN M236_5M*

Spec5M

INTERVIEWER: Please record other ways in which the UK might be affected VERBATIM.

Remember to recode into M236_5M, 1 to 11 where possible

STRING[255]

ASK ALWAYS:

INTRO7

SHOWCARD C236.7

The following organisations could all contribute to the reduction of poverty in developing countries.

For each organisation please tell me whether you think it makes a major contribution, some contribution or little or no contribution to the reduction of poverty in developing countries.

- (1) PRESS <1> TO CONTINUE

ASK ALWAYS:

M236_7

SHOWCARD C236.7

[*] ... The United Nations (UN)?

- (1) A major contribution,
 - (2) Some contribution,
 - (3) Little or no contribution
 - (4) Don't know (DO NOT PROMPT)
-

ASK ALWAYS:

M236_8

SHOWCARD C236.7

[*] ... The International Monetary Fund (IMF) and the World Bank? (Please tell me whether you think they make a major contribution, some contribution or little or no contribution to the reduction of poverty in developing countries).

- (1) A major contribution,
 - (2) Some contribution,
 - (3) Little or no contribution
 - (4) Don't know (DO NOT PROMPT)
-

ASK ALWAYS:

M236_9

SHOWCARD C236.7

[*] ... Individual governments of richer countries like those in Western Europe, Japan, the United States and Australia? (Please tell me whether you think they make a major contribution, some contribution or little or no contribution to the reduction of poverty in developing countries).

- (1) A major contribution,
 - (2) Some contribution,
 - (3) Little or no contribution
 - (4) Don't know (DO NOT PROMPT)
-

ASK ALWAYS:

M236_10

SHOWCARD C236.7

[*] ... The European Union (EU)? (Please tell me whether you think it makes a major contribution, some contribution or little or no contribution to the reduction of poverty in developing countries).

- (1) A major contribution,
- (2) Some contribution,
- (3) Little or no contribution
- (4) Don't know (DO NOT PROMPT)

ASK ALWAYS:

M236_11

SHOWCARD C236.7

[*] ... The governments of the developing countries themselves? (Please tell me whether you think they make a major contribution, some contribution or little or no contribution to the reduction of poverty in developing countries).

- (1) A major contribution,
 - (2) Some contribution,
 - (3) Little or no contribution
 - (4) Don't know (DO NOT PROMPT)
-

ASK ALWAYS:

M236_12

SHOWCARD C236.7

[*] ... International charities such as the Red Cross, OXFAM, or Save the Children Fund? (Please tell me whether you think they make a major contribution, some contribution or little or no contribution to the reduction of poverty in developing countries).

- (1) A major contribution,
 - (2) Some contribution,
 - (3) Little or no contribution
 - (4) Don't know (DO NOT PROMPT)
-

ASK ALWAYS:

M236_13

SHOWCARD C236.7

[*] ... Business and private investors? (Please tell me whether you think they make a major contribution, some contribution or little or no contribution to the reduction of poverty in developing countries).

- (1) A major contribution,
 - (2) Some contribution,
 - (3) Little or no contribution
 - (4) Don't know (DO NOT PROMPT)
-

ASK ALWAYS:

M236_14

SHOWCARD C236.7

[*] ... The World Trade Organisation (WTO)? (Please tell me whether you think it makes a major contribution, some contribution or little or no contribution to the reduction of poverty in developing countries).

- (1) A major contribution,
- (2) Some contribution,
- (3) Little or no contribution
- (4) Don't know (DO NOT PROMPT)

ASK ALWAYS:

M236_15

[*] Do you think the level of commitment of the UK Government to poverty reduction in developing countries is ...

RUNNING PROMPT

- (1) Too high,
- (2) too low,
- (3) or about right?
- (4) Don't know (DO NOT PROMPT)

ASK ALWAYS:

M236_16

SHOWCARD C236.16

[*] On this card is a list of ways in which the UK Government could contribute to reducing poverty in developing countries.

I'd like you to tell me in which three ways, if any, you think they should be contributing to reducing poverty, starting with the most important and then the next most important and so on.

ENTER MOST IMPORTANT

- (1) Providing financial support and other types of aid such as training and/or expertise
- (2) Working for a fairer world trading system
- (3) Encouraging increased private sector investment
- (4) Reducing conflict and war
- (5) Working to improve the effectiveness of international organisations like the World Bank, the UN and the European Union
- (6) Working to cancel the debts owed by developing countries
- (7) Other (please specify)
- (8) None of these

ASK IF: *Other specified*

Spec16

Please specify other

Remember to recode into M236_16, 1 to 6 where possible

STRING[200]

ASK IF: Not none of these at M236_16

M236_17

SHOWCARD C236.16

[*] And what is the next most important?

- (1) Providing financial support and other types of aid such as training and/or expertise
- (2) Working for a fairer world trading system
- (3) Encouraging increased private sector investment
- (4) Reducing conflict and war
- (5) Working to improve the effectiveness of international organisations like the World Bank, the UN and the European Union
- (6) Working to cancel the debts owed by developing countries
- (7) Other (please specify)
- (8) None of these

ASK IF: Not none of these at M236_16

AND: Other specified

Spec17

Please specify other

Remember to recode into M236_16, 1 to 6 where possible

STRING[200]

ASK IF: Not none of these at M236_16

AND: Not none of these at M236_17

M236_18

SHOWCARD C236.16

[*] And can you tell me which is the third most important?

- (1) Providing financial support and other types of aid such as training and/or expertise
- (2) Working for a fairer world trading system
- (3) Encouraging increased private sector investment
- (4) Reducing conflict and war
- (5) Working to improve the effectiveness of international organisations like the World Bank, the UN and the European Union
- (6) Working to cancel the debts owed by developing countries
- (7) Other (please specify)
- (8) None of these

ASK IF: Not none of these at M236_16

AND: Not none of these at M236_17

AND: Other specified

Spec18

Please specify other

Remember to recode into M236_16, 1 to 6 where possible

STRING[200]

ASK ALWAYS:

Intro19

Governments throughout the world have agreed a set of Millennium Development Goals which they have pledged to achieve by the year 2015.

I'm going to read out each of these Millennium Goals and I'd like you to say whether you think that the Worlds Governments' will achieve the goal by 2015, make significant progress towards achieving the goal by 2015, make some progress or will make no progress at all.

- (1) PRESS <1> TO CONTINUE
-

ASK ALWAYS:

M236_19A

SHOWCARD C236_19

The proportion of people who live in extreme poverty will be half what it was in 1990.

- (1) Goal achieved by the year 2015
(2) Significant progress made towards achieving the goal by the year 2015
(3) Some progress made towards achieving the goal by the year 2015
(4) No progress made towards achieving the goal by the year 2015
(5) Don't Know (Spontaneous)
-

ASK ALWAYS:

M236_19B

SHOWCARD C236_19

Children everywhere will be able to complete a full course of primary schooling and that girls will have the same educational opportunities as boys.

- (1) Goal achieved by the year 2015
(2) Significant progress made towards achieving the goal by the year 2015
(3) Some progress made towards achieving the goal by the year 2015
(4) No progress made towards achieving the goal by the year 2015
(5) Don't Know (Spontaneous)

ASK ALWAYS:

M236_19C

SHOWCARD C236_19

The proportion of children who die under the age of five will be reduced by two thirds.

- (1) Goal achieved by the year 2015
 - (2) Significant progress made towards achieving the goal by the year 2015
 - (3) Some progress made towards achieving the goal by the year 2015
 - (4) No progress made towards achieving the goal by the year 2015
 - (5) Don't Know (Spontaneous)
-

ASK ALWAYS:

M236_19D

SHOWCARD C236_19

The proportion of women dying as a result of having children will be reduced by three quarters.

- (1) Goal achieved by the year 2015
 - (2) Significant progress made towards achieving the goal by the year 2015
 - (3) Some progress made towards achieving the goal by the year 2015
 - (4) No progress made towards achieving the goal by the year 2015
 - (5) Don't Know (Spontaneous)
-

ASK ALWAYS:

M236_19E

SHOWCARD C236_19

Men and women of appropriate ages will have access to family planning services.

- (1) Goal achieved by the year 2015
- (2) Significant progress made towards achieving the goal by the year 2015
- (3) Some progress made towards achieving the goal by the year 2015
- (4) No progress made towards achieving the goal by the year 2015
- (5) Don't Know (Spontaneous)

ASK ALWAYS :

M236_19F

SHOWCARD C236_19

The incidence of Malaria, HIV/AIDS and other major diseases will have begun to decline.

- (1) Goal achieved by the year 2015
- (2) Significant progress made towards achieving the goal by the year 2015
- (3) Some progress made towards achieving the goal by the year 2015
- (4) No progress made towards achieving the goal by the year 2015
- (5) Don't Know (Spontaneous)

ASK ALWAYS :

M236_19G

SHOWCARD C236_19

Current trends in the loss of environmental resources will be effectively reversed.

- (1) Goal achieved by the year 2015
- (2) Significant progress made towards achieving the goal by the year 2015
- (3) Some progress made towards achieving the goal by the year 2015
- (4) No progress made towards achieving the goal by the year 2015
- (5) Don't Know (Spontaneous)

ASK ALWAYS :

M236_19H

SHOWCARD C236_19

A global partnership for development will be established to promote fair trade and tackle the debt problems facing developing countries.

- (1) Goal achieved by the year 2015
- (2) Significant progress made towards achieving the goal by the year 2015
- (3) Some progress made towards achieving the goal by the year 2015
- (4) No progress made towards achieving the goal by the year 2015
- (5) Don't Know (Spontaneous)

ASK ALWAYS:

M236_24M

How, if at all, do you personally find out what is happening in developing countries?

CODE UP TO THREE RESPONSES

SET [3] OF

- (1) TV News
- (2) Other TV programmes
- (3) Radio
- (4) Newspapers/magazines
- (5) School/education
- (6) Church or other religious groups
- (7) Charities
- (8) Books
- (9) Foreign travel / holidays
- (10) Family or friends
- (11) Internet
- (12) Films at cinema
- (13) Other (please specify)
- (14) I don't find out what's happening

ASK IF: *Other specified*

SPEC24

Please specify other

Remember to recode into M236_24M, 1 to 12 where possible

STRING[150]

ASK ALWAYS:

M236_25M

SHOWCARD C236_25M

[*] In which ways, if any, do you think you as an individual can most effectively contribute to reducing poverty in developing countries? Please choose up to three ways. Starting with the most important and then the next most important and so on.

INTERVIEWER: CODE UP TO THREE ONLY

SET [3] OF

- (1) Paying taxes - a proportion of which is spent on International Aid by the Government
- (2) Donating to charities or other appeals on behalf of developing countries
- (3) Supporting socially responsible business and investment
- (4) Buying Fair trade goods
- (5) Working in a developing country to promote development
- (6) Being involved in church or campaign groups working on behalf of developing countries
- (7) Putting pressure on politicians to increase the assistance which the Government gives to developing countries
- (8) Travelling to a developing country as a tourist
- (9) Other (please specify)
- (10) Do not think can contribute effectively as an individual to reducing poverty in developing countries (spontaneous)

ASK IF: Other IN M236_25M

Spec25

INTERVIEWER:RECORD OTHER WAY(S).

Please remember to recode into M236_25M where possible

STRING[255]