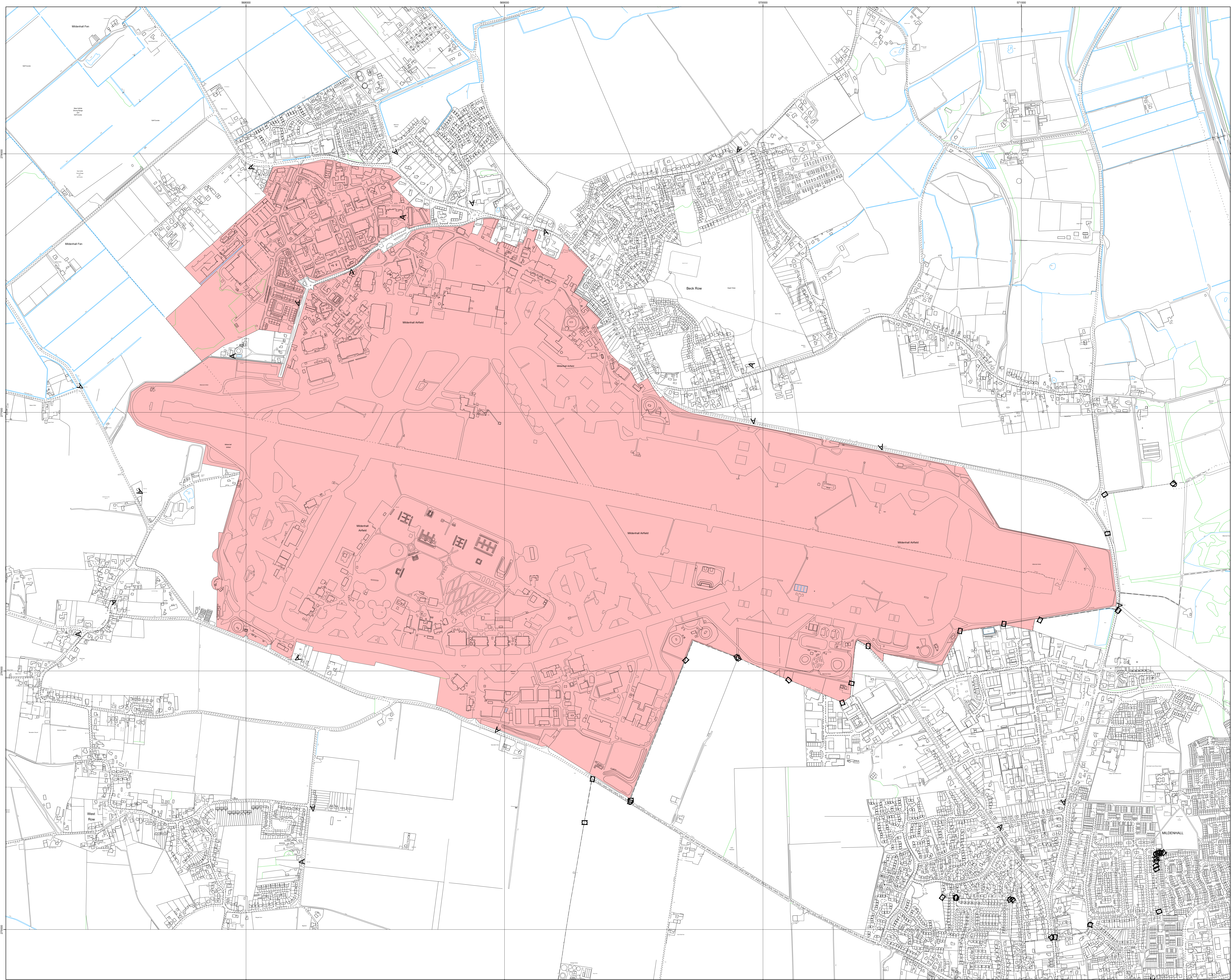


SOCAP PLAN
RAF MILDENHALL
SUFFOLK
Grid Reference: TL 685776



N
Scale 1:5,000 @ A0

The scale ratio stated is accurate when reproduced at size stated by the Geographic Information Unit, Waterbeach. Any other reproduction by conventional or electronic means, e.g. printing from a PDF, may alter the scale of the map. Please check the dimensions of the grid to confirm any change in scale before taking measurements.

Plan Reference: SOCAP_Mapping_A0L
Plan Dated : 06 December 2005
Produced By : GM
Revised : Title

IMPORTANT
Due to the Ordnance Survey's Positional Accuracy Improvement (PAI) Programme, some data on this map may be misaligned with its related OS feature. The originating GI office will be able to advise you of the PAI data conversion programme, its impact on this map and any further information you may require.

This map is © Copyright DE 2005 and may not be copied or reproduced in any form, nor added to or otherwise altered in any way without the express permission of the Geographic Information Unit, DE Waterbeach
This map is reproduced from Ordnance Survey material with the permission of Ordnance Survey on behalf of the Controller of Her Majesty's Stationery Office © Crown Copyright. Unauthorised reproduction infringes Crown Copyright and may lead to prosecution or civil proceedings.
Defence Estates Licence No. 1000250, 2005.

MOD, DE OPERATIONS NORTH
STIRLING HOUSE, DENNY END ROAD,
WATERBEACH, CAMBS. CB5 9QE
Tel : 01223 255414