

STATISTICAL RELEASE

15 December 2005



Taking Part: The National Survey of Culture, Leisure & Sport

Provisional results from the first three months of the 2005/2006 survey

One of the Department's aims is to improve the quality of life for everyone by providing people with the chance to get involved with a variety of sports, arts and cultural activities. The Taking Part Survey is a key tool for monitoring our performance and informing our delivery in this area.

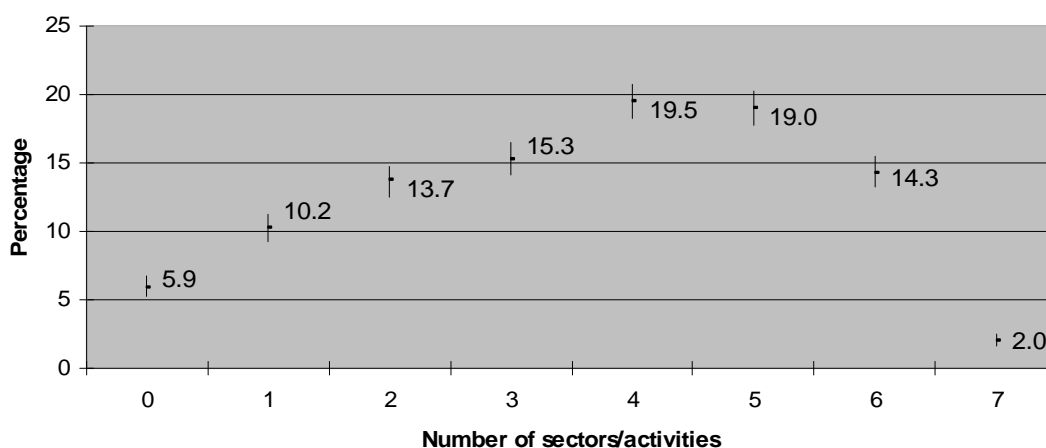
Taking Part is a continuous national survey of adults (aged 16 and over) who live in a representative cross-section of private households in England. This release presents *provisional* headline findings on the level of participation and attendance in and across activities within the Department's remit.

Culture and Sport

An estimated 94 per cent¹ of all adults had engaged in at least one cultural or sporting activity during the past twelve months.²

Of all adults, over two-thirds had engaged in three or more sectors/activities, over half had engaged in four or more and over one-third had engaged in five or more.³

Chart 1: Number of sectors/activities engaged with during the past 12 months



Note:

A. The confidence interval is represented by the vertical line.

¹ The estimate is 94.1%. The confidence interval = 93.3% – 94.8%.

² This is at least one of the following: attendance at a historic environment site, museum/gallery, library, archive or arts event, or participation in an arts activity or an active sport.

³ The estimates of engagement in two or more sectors/activities are likely to be maximum estimates. See Background Note 9 for more information.

Summary

Of all adults:

Culture and Sport

- 69% attended at least one type of historic environment site during the past 12 months.
- 43% attended a museum/gallery at least once during the past 12 months.
- 49% attended a library at least once during the past 12 months.
- 6% attended an archive at least once during the past 12 months.
- 67% attended at least one type of arts event during the past 12 months.
- 67% participated in at least one type of arts activity during the past 12 months.
- 56% participated on at least one occasion in an active sport during the past 4 weeks.
- 53% participated on at least one occasion in a moderate intensity level sport during the past 4 weeks.
- 7% had volunteered in a culture or sport sector during the past 12 months.

Gambling and Broadcasting

- 65% participated in at least one type of gambling activity during the past 12 months.
- 67% lived in a household where the main television was connected to a digital system.

Historic Environment

This section examines visits to historic environment sites, such as cities with historic character or historic parks.⁴

The data show that 69 per cent of all adults attended at least one type of historic environment site during the past twelve months. The highest proportion of visitors attended once or twice during that period (Table 1).

Table 1: Frequency of attending types of historic environment sites during the past 12 months

	Percentage	Range (%)
Number of types of sites		
0	30.6	29.1 – 32.1
1	17.1	15.8 – 18.3
2	11.3	10.3 – 12.3
3+	41.0	39.4 – 42.6
Frequency of visits^A		
1-2 times a year	39.4	37.4 – 41.3
At least 3-4 times a year	37.0	35.1 – 38.9
At least once a month	19.2	17.7 – 20.8
At least once a week	4.3	3.5 – 5.1

Note:

A. This column does not total 100%. The remaining estimate is for those who did not know their frequency.

Table 2 shows a breakdown of those who attended at least one type of historic environment site during the past twelve months by different subgroups of the population. The *statistically significant* findings are:

- Those in the youngest age group had significantly lower rates of attendance than those in all other age groups, except the oldest. Those in the oldest age group had significantly lower rates of attendance than all remaining age groups. Finally, those aged 45-64 reported significantly higher rates of attendance than those aged 65-74.
- There was no significant difference in the attendance rates between males and females.
- Adults with a limiting disability/illness had significantly lower rates of attendance than both those with a non-limiting and no disability/illness.
- Adults from white ethnic backgrounds had significantly higher rates of attendance than those from black and minority ethnic backgrounds.
- Those from higher socio-economic groups had significantly higher rates of attendance than those from lower socio-economic groups.
- Adults living in rural areas had significantly higher rates of attendance than those living in urban areas.

⁴ For the full list of types of historic environment sites see Appendix Part A.

Table 2: Attendance to at least one type of designated historic environment site during the past 12 months

	Percentage	Range (%)
Age		
16-24	58.3	53.5 – 63.2
25-44	73.2	70.8 – 75.6
45-64	74.9	72.4 – 77.5
65-74	69.9	65.9 – 74.0
75+	51.6	46.5 – 56.6
Gender		
Male	70.3	68.1 – 72.6
Female	68.5	66.5 – 70.5
Disability		
Limiting disability/illness	56.5	53.2 – 59.7
Non limiting disability/illness	77.1	72.1 – 82.2
No disability/ illness	72.7	71.0 – 74.5
Ethnicity		
White	71.9	70.3 – 73.4
Black and minority ethnic	45.0	40.8 – 49.2
Socio-economic group		
Higher	79.2	77.3 – 81.1
Lower	57.6	55.1 – 60.0
Area		
Urban	66.8	65.1 – 68.5
Rural	79.4	76.6 – 82.3
All adults	69.4	67.9 – 70.9

During the past twelve months 17 per cent⁵ of adults visited a historical or heritage website, of which 24 per cent⁶ took a virtual tour of a historical site.

⁵ The estimate is 17.1%. The confidence interval = 15.8% – 18.3%.

⁶ The estimate is 24.5%. The confidence interval = 20.9% – 28.0%.

Museums and Galleries

This section examines visits to museums and galleries, such as the National Museums (e.g. the Tate Modern, Imperial War Museum, and the Royal Armouries) or regional or local museums/galleries (e.g. Birmingham Museum and Art Gallery, the Millennium Galleries in Sheffield, and Luton Museum).

The data show that 43 per cent of all adults attended a museum/gallery at least once during the past twelve months. The highest proportion of visitors attended once or twice during that period (Table 3).

Table 3: Frequency of attending museums and galleries during the past 12 months

	Percentage	Range (%)
Number of visits		
0	57.3	55.7 – 58.9
1+	42.7	41.1 – 44.3
Frequency of visits^A		
1-2 times a year	59.7	57.2 – 62.2
At least 3-4 times a year	31.0	28.7 – 33.4
At least once a month	8.3	6.9 – 9.7
At least once a week	0.9	0.4 – 1.4

Note:

A. This column does not total 100%. The remaining estimate is for those who did not know their frequency.

Table 4 shows a breakdown of those who attended at least one museum/gallery during the past twelve months by different subgroups of the population. The *statistically significant* findings are:

- Those in the youngest age group had significantly lower rates of attendance than both those aged 25-44 and 45-64. Those in the oldest age group had significantly lower rates of attendance than all their younger counterparts. Those aged 65-74 had significantly lower rates of attendance than both those aged 25-44 and 45-64.
- There was no significant difference in the attendance rates between males and females.
- Adults with a limiting disability/illness had significantly lower rates of attendance than both those with a non-limiting and no disability/illness.
- Adults from white ethnic backgrounds had significantly higher rates of attendance than those from black and minority ethnic backgrounds.
- Those from higher socio-economic groups had significantly higher rates of attendance than those from lower socio-economic groups.
- Adults living in rural areas had significantly higher rates of attendance than those living in urban areas.

Table 4: Attendance to at least one museum or gallery during the past 12 months

	Percentage	Range (%)
Age		
16-24	38.2	33.4 – 42.9
25-44	47.3	44.6 – 50.0
45-64	45.7	42.7 – 48.6
65-74	39.2	34.9 – 43.6
75+	24.3	20.0 – 28.7
Gender		
Male	43.5	41.0 – 45.9
Female	42.0	39.9 – 44.1
Disability		
Limiting disability/illness	31.5	28.4 – 34.5
Non limiting disability/illness	45.7	39.7 – 51.7
No disability/ illness	46.0	44.0 – 47.9
Ethnicity		
White	43.6	41.8 – 45.3
Black and minority ethnic	34.3	30.3 – 38.3
Socio-economic group		
Higher	51.6	49.3 – 53.9
Lower	30.6	28.4 – 32.9
Area		
Urban	41.8	40.0 – 43.6
Rural	46.2	42.7 – 49.7
All adults	42.7	41.1 – 44.3

During the past twelve months 14 per cent⁷ of adults visited a museum/gallery website, of which a 33 per cent⁸ looked at an item from a collection.

⁷ The estimate is 14.0%. The confidence interval = 12.9% – 15.1%.

⁸ The estimate is 32.9%. The confidence interval = 28.6% – 37.2%.

Libraries

This section examines visits to a library, such as the national library (the British Library), a large central library, a local branch library or a mobile library.

The data show that 49 per cent of all adults attended a library at least once during the past twelve months. The highest proportion of visitors attended at least once a month during that period (Table 5).

Table 5: Frequency of attending libraries during the past 12 months

	Percentage	Range (%)
Number of visits		
0	50.9	49.3 – 52.5
1+	49.1	47.5 – 50.7
Frequency of visits^A		
1-2 times a year	18.8	17.0 – 20.6
At least 3-4 times a year	27.8	25.8 – 29.9
At least once a month	34.9	32.7 – 37.1
At least once a week	18.3	16.5 – 20.1

Note:

A. This column does not total 100%. The remaining estimate is for those who did not know their frequency.

Table 6 shows a breakdown of those who attended at least one library during the past twelve months by different subgroups of the population. The *statistically significant* findings are:

- Those in the youngest age group had significantly higher rates of attendance than each of their older counterparts, except those aged 25-44. Those aged 25-44 had significantly higher rates of attendance than each of their older counterparts.
- Females had significantly higher rates of attendance than males.
- Adults with no disability/illness had significantly higher rates of attendance than those with a limiting disability/illness.
- Adults from black and minority ethnic backgrounds had significantly higher rates of attendance than those from white ethnic backgrounds.
- Those from higher socio-economic groups had significantly higher rates of attendance than those from lower socio-economic groups.
- Adults living in rural areas had significantly higher rates of attendance than those living in urban areas.

Table 6: Attendance to at least one library during the past 12 months

	Percentage	Range (%)
Age		
16-24	53.4	48.5 – 58.3
25-44	51.3	48.5 – 54.0
45-64	46.9	44.0 – 49.9
65-74	45.3	40.9 – 49.6
75+	44.1	39.1 – 49.2
Gender		
Male	46.0	43.5 – 48.4
Female	51.9	49.8 – 54.1
Disability		
Limiting disability/ illness	42.9	39.6 – 46.1
Non limiting disability/ illness	46.6	40.6 – 52.6
No disability/illness	51.2	49.3 – 53.2
Ethnicity		
White	48.4	46.7 – 50.2
Black and minority ethnic	55.4	51.2 – 59.6
Socio-economic group		
Higher	52.8	50.5 – 55.1
Lower	41.9	39.4 – 44.3
Area		
Urban	48.1	46.3 – 50.0
Rural	52.7	49.2 – 56.2
All adults	49.1	47.5 – 50.7

Archives

This section examines visits to archives, such as record offices or archive centres.⁹

The data show that 6 per cent of all adults attended an archive at least once during the past twelve months. The highest proportion of visitors attended once or twice during that period (Table 7).

Table 7: Frequency of attending archives during the past year

	Percentage	Range (%)
Number of visits		
0	93.8	93.0 – 94.6
1+	6.2	5.4 – 7.0
Frequency of visits^A		
1-2 times a year	70.5	64.4 – 76.6
At least 3-4 times a year	15.6	10.8 – 20.4
At least once a month	9.5	5.6 – 13.4
At least once a week	4.2	1.5 – 6.8

Note:

A. This column does not total 100%. The remaining estimate is for those who did not know their frequency.

Table 8 shows a breakdown of those who attended an archive at least once during the past twelve months by different subgroups of the population. The *statistically significant* findings are:

- Those aged 75 and over had significantly lower rates of attendance than those aged 45-64 and 65-74. Also, those aged 25-44 reported significantly lower rates of attendance than those aged 45-64.
- Males had significantly higher rates of attendance than females.
- Adults with no disability/illness had significantly higher rates of attendance than those with a limiting disability/illness.
- There was no significant difference in the attendance rates between adults from white ethnic backgrounds compared to those from black and minority ethnic backgrounds.
- Those from higher socio-economic groups had significantly higher rates of attendance than those from lower socio-economic groups.
- There was no significant difference in the rates of attendance between those adults living in rural areas compared to those living in urban areas.

⁹ For a definition of an archive see Appendix Part B.

Table 8: Attendance to at least one archive during the past 12 months

	Percentage	Range (%)
Age		
16-24	5.6	3.4 – 7.9
25-44	5.4	4.2 – 6.7
45-64	7.8	6.2 – 9.3
65-74	7.6	5.3 – 9.9
75+	3.4	1.5 – 5.2
Gender		
Male	7.2	5.9 – 8.5
Female	5.2	4.3 – 6.2
Disability		
Limiting disability/illness	4.8	3.4 – 6.2
Non limiting disability/illness	7.4	4.3 – 10.6
No disability/illness	6.5	5.6 – 7.5
Ethnicity		
White	6.3	5.5 – 7.2
Black and minority ethnic	4.5	2.7 – 6.2
Socio-economic group		
Higher	7.4	6.2 – 8.6
Lower	4.1	3.1 – 5.0
Area		
Urban	5.9	5.1 – 6.8
Rural	7.2	5.4 – 9.0
All adults	6.2	5.4 – 7.0

Arts Opportunities

This section looks at attendance at arts events and participation in arts activities.

Arts attendance

This includes attending events such as exhibitions or collections of art, photography or sculpture or attending a theatre performance.¹⁰

The data show that 67 per cent of all adults attended at least one type of arts event during the past twelve months. The highest proportion of visitors attended once or twice during that period (Table 9).

Table 9: Frequency of attending types of arts events during the past 12 months

	Percentage	Range (%)
Number of types of arts events		
0	33.1	31.6 – 34.6
1	24.3	22.9 – 25.7
2	14.8	13.6 – 15.9
3+	27.9	26.4 – 29.3
Frequency of visits^A		
1-2 times a year	48.3	46.3 – 50.3
At least 3-4 times a year	34.8	32.9 – 36.7
At least once a month	12.8	11.4 – 14.1
At least once a week	3.9	3.1 – 4.7

Note:

A. This column does not total 100%. The remaining estimate is for those who did not know their frequency.

Table 10 shows a breakdown of those who attended at least one type of arts event during the past twelve months by different subgroups of the population. The *statistically significant* findings are:

- Those aged 75 and over had significantly lower rates of attendance than all their younger counterparts. Those aged 65-74 also had significantly lower rates of attendance than those aged 25-44.
- There was no significant difference in attendance rates between males and females.
- Adults with a limiting disability/illness had significantly lower rates of attendance than both those with a non-limiting and no disability/illness.
- Adults from white ethnic backgrounds had significantly higher rates of attendance than those from black and minority ethnic backgrounds.
- Those from higher socio-economic groups had significantly higher rates of attendance than those from lower socio-economic groups.
- Adults living in rural areas had significantly higher rates of attendance than those living in urban areas.

¹⁰ For the full list of types of arts events see Appendix Part C.

Table 10: Attendance to at least one type of arts event during the past 12 months

	Percentage	Range (%)
Age		
16-24	68.5	63.9 – 73.0
25-44	70.7	68.2 – 73.2
45-64	69.0	66.2 – 71.7
65-74	64.4	60.2 – 68.7
75+	44.0	39.0 – 49.1
Gender		
Male	66.1	63.8 – 68.4
Female	67.6	65.6 – 69.6
Disability		
Limiting disability/illness	53.1	49.8 – 56.3
Non limiting disability/illness	72.9	67.5 – 78.2
No disability/illness	70.7	68.9 – 72.5
Ethnicity		
White	68.0	66.3 – 69.6
Black and minority ethnic	55.9	51.7 – 60.1
Socio-economic group		
Higher	76.2	74.2 – 78.1
Lower	54.5	52.0 – 56.9
Area		
Urban	64.6	62.8 – 66.3
Rural	75.7	72.7 – 78.7
All adults	66.9	65.4 – 68.4

Arts participation

This includes participating in activities such as playing musical instruments for pleasure or writing stories, music or poetry.¹¹

The data show that 67 per cent of all adults participated in at least one type of arts activity during the past twelve months. The highest proportion of participants engaged at least once a week during that period (table 11).

¹¹For the full list of types of arts activities see Appendix Part D

Table 11: Frequency of participating in types of arts activities during the past 12 months

	Percentage	Range (%)
Number of types of arts activities		
0	33.1	31.6 – 34.6
1	26.6	25.2 – 28.0
2	15.1	14.0 – 16.3
3+	25.2	23.8 – 26.6
Frequency of participation^A		
1-2 times a year	11.8	10.3 – 13.4
At least 3-4 times a year	18.4	16.5 – 20.3
At least once a month	23.9	21.8 – 26.0
At least once a week	45.4	42.9 – 47.8

Note:

A. This column does not total 100%. The remaining estimate is for those who did not know their frequency.

Table 12 shows a breakdown of those who participated in at least one type of arts activity during the past twelve months by different population subgroups. The *statistically significant* findings are:

- Those aged 75 and over had significantly lower rates of participation than all their younger counterparts. Those aged 65-74 also had significantly lower rates of participation than those aged 25-44.
- Females had significantly higher rates of participation than males.
- Adults with a limiting disability/illness had significantly lower rates of participation than both those with a non-limiting and no disability/illness.
- Adults from white ethnic backgrounds had significantly higher rates of participation than those from black and minority ethnic backgrounds.
- Those from higher socio-economic groups had significantly higher rates of participation than those from lower socio-economic groups.
- Adults living in rural areas had significantly higher rates of participation than those living in urban areas.

Table 12: Participation in at least one type of arts activity during the past 12 months

	Percentage	Range (%)
Age		
16-24	65.5	60.8 – 70.2
25-44	70.5	68.0 – 73.0
45-64	68.7	66.0 – 71.4
65-74	64.4	60.2 – 68.7
75+	51.1	46.1 – 56.2
Gender		
Male	61.5	59.2 – 63.9
Female	71.9	70.0 – 73.8
Disability		
Limiting disability/illness	59.1	55.8 – 62.3
Non limiting disability/illness	70.3	64.8 – 75.8
No disability/illness	69.2	67.4 – 71.0
Ethnicity		
White	68.5	66.9 – 70.1
Black and minority ethnic	51.1	46.8 – 55.3
Socio-economic group		
Higher	76.5	74.6 – 78.5
Lower	54.1	51.7 – 56.5
Area		
Urban	65.2	63.4 – 66.9
Rural	73.6	70.5 – 76.7
All adults	66.9	65.4 – 68.4

Sports Opportunities

This section looks at participation in active and moderate intensity level sport.

Active Sport

This includes participation in a wide range of sports and active recreation activities, but excludes walking.¹²

The data show that 56 per cent of all adults participated on at least one occasion in an active sport during the past four weeks. The highest proportion of participants engaged on 1-7 days during that period (Table 13).

Table 13: Frequency of participating in types of active sport during the past four weeks

	Percentage	Range (%)
Number of types of active sports		
0	44.4	42.8 – 46.0
1	23.0	21.7 – 24.4
2	13.3	12.2 – 14.4
3+	19.3	18.1 – 20.6
Frequency of participation^A		
1-7 days	53.5	51.2 – 55.8
8-14 days	32.6	30.4 – 34.7
15-21 days	6.7	5.5 – 7.8
22-28 days	6.0	4.9 – 7.1

Note:

A. This column does not total 100%. The remaining estimate is for those who did not know their frequency.

Table 14 shows a breakdown of those who participated on at least one occasion in an active sport during the past four weeks by different population subgroups. The *statistically significant* findings are:

- Those in younger age groups had significantly higher rates of participation than each of their older counterparts.
- Males had significantly higher rates of participation than females.
- Adults with a limiting disability/illness had significantly lower rates of participation than both those with a non-limiting or no disability/ illness. Also, adults with a non-limiting disability/illness had significantly lower rates of participation than those no disability/illness.
- Those from white ethnic backgrounds had significantly higher rates of participation than those from black and minority ethnic backgrounds.
- Those from higher socio-economic groups had significantly higher rates of participation than those from lower socio-economic groups.
- There was no significant difference in the participation rates between those adults living in rural areas compared to those living in urban areas.

¹² For the full list of types of active sports see Appendix Part E.

Table 14: Participation in at least one type of active sport during the past four weeks

	Percentage	Range (%)
Age		
16-24	75.8	71.6 – 80.0
25-44	67.4	64.9 – 70.0
45-64	50.7	47.7 – 53.6
65-74	36.1	31.9 – 40.3
75+	13.3	9.8 – 16.7
Gender		
Male	62.7	60.3 – 65.0
Female	49.1	47.0 – 51.3
Disability		
Limiting disability/illness	33.2	30.1 – 36.3
Non limiting disability/illness	55.4	49.4 – 61.4
No disability/illness	62.6	60.7 – 64.5
Ethnicity		
White	56.3	54.6 – 58.0
Black and minority ethnic	49.0	44.8 – 53.3
Socio-economic group		
Higher	61.0	58.7 – 63.3
Lower	46.1	43.7 – 48.6
Area		
Urban	55.5	53.7 – 57.3
Rural	56.1	52.6 – 59.6
All adults	55.6	54.0 – 57.2

Moderate Intensity Level Sport

As with active sport, this includes participation in a wide range of sports and active recreation activities, however walking is included. Also, the effort put into each sport or activity has to be enough to raise the person's breathing rate.¹³

The data show that 53 per cent of all adults participated on at least one occasion in a moderate intensity level sport during the past four weeks. The highest proportion of participants engaged on 1-7 days during that period (Table 15).

¹³ For more information see Appendix Part F.

Table 15: Frequency of participating in types of moderate intensity level sport during the past four weeks

	Percentage	Range (%)
Number of types of moderate intensity level sport		
0	47.4	45.8 – 49.1
1	24.5	23.1 – 25.9
2	13.1	12.0 – 14.2
3+	15.0	13.8 – 16.1
Frequency of participation^A		
1 – 7 days	36.0	33.8 – 38.3
8 – 14 days	26.7	24.6 – 28.8
15 – 21 days	15.6	13.9 – 17.3
22 – 28 days	20.7	18.8 – 22.6

Notes:

A. This column does not total 100%. The remaining estimate is for those who did not know their frequency.

Table 16 shows a breakdown of those who participated on at least one occasion in a moderate intensity level sport during the past four weeks by different population subgroups. The *statistically significant* findings are:

- Those in younger age groups had significantly higher rates of participation than each of their older counterparts.
- Males had significantly higher rates of participation than females.
- Adults with a limiting disability/illness had significantly lower rates of participation than both those with a non-limiting and no disability/illness.
- Those from white ethnic backgrounds had significantly higher rates of participation than those from black and minority ethnic backgrounds.
- Those from higher socio-economic groups had significantly higher rates of participation than those from lower socio-economic groups.
- There was no significant difference in the participation rates between those adults living in rural areas compared to those living in urban areas.

Table 16: Participation in at least one type of moderate intensity level sport during the past four weeks

	Percentage	Range (%)
Age		
16-24	72.1	67.7 – 76.5
25-44	64.0	61.4 – 66.7
45-64	49.0	46.0 – 51.9
65-74	32.5	28.3 – 36.6
75+	9.2	6.3 – 12.2
Gender		
Male	59.1	56.7 – 61.5
Female	46.5	44.4 – 48.7
Disability		
Limiting disability/illness	29.6	26.6 – 32.6
Non limiting disability/illness	53.6	47.5 – 59.6
No disability/illness	59.6	57.7 – 61.5
Ethnicity		
White	53.3	51.5 – 55.0
Black and minority ethnic	45.4	41.2 – 49.6
Socio-economic group		
Higher	59.4	57.1 – 61.7
Lower	41.6	39.2 – 44.0
Area		
Urban	52.1	50.2 – 53.9
Rural	54.6	51.0 – 58.1
All adults	52.6	50.9 – 54.2

Gambling

This section looks at participation in gambling activities, such as the National Lottery or football pools.¹⁴

The data show that 65 per cent of all adults participated in at least one type of gambling activity during the past twelve months. The highest proportion of participants engaged in just one type during that period (Table 17).

Table 17: Number of types of gambling activities participated in during the past 12 months

	Percentage	Range (%)
Number of types of activities		
0	35.3	33.8 – 36.9
1	36.1	34.6 – 37.7
2	16.5	15.3 – 17.7
3+	12.0	10.9 – 13.0

Table 18 shows a breakdown of those who participated in at least one type of gambling activity during the past twelve months by different population subgroups. The *statistically significant* findings are:

- Those in the oldest age group had significantly lower rates of participation than each of their younger counterparts, except those aged 16-24. Those in the youngest age group had significantly lower rates of participation than those aged 25-44 and 45-64.
- Males had significantly higher rates of participation than females.
- Adults with a non-limiting disability/ illness had significantly higher rates of participation than both those with a limiting and no disability/ illness.
- Those from white ethnic backgrounds had significantly higher rates of participation than those from black and minority ethnic backgrounds.
- Those from higher socio-economic groups had significantly lower rates of participation than those from lower socio-economic groups.
- Adults living in urban areas had significantly higher rates of participation than those living in rural areas.

¹⁴ For the full list of types of gambling activities see Appendix Part G.

Table 18: Participation in at least one type of gambling activity during the past 12 months

	Percentage	Range (%)
Age		
16-24	58.0	53.2 – 62.9
25-44	67.9	65.3 – 70.4
45-64	68.2	65.4 – 70.9
65-74	63.1	58.9 – 67.4
75+	51.8	46.7 – 56.9
Gender		
Male	66.7	64.4 – 69.1
Female	62.8	60.7 – 64.9
Disability		
Limiting disability/ illness	63.5	60.3 – 66.7
Non limiting disability/ illness	72.0	66.6 – 77.4
No disability/ illness	64.4	62.5 – 66.3
Ethnicity		
White	66.9	65.2 – 68.5
Black and minority ethnic	43.1	38.9 – 47.3
Socio-economic group		
Higher	63.0	60.8 – 65.3
Lower	69.2	66.9 – 71.5
Area		
Urban	65.6	63.8 – 67.3
Rural	61.3	57.9 – 64.7
All adults	64.7	63.1 – 66.2

Broadcasting

This section looks at ownership of/subscription to digital television.

The data show that 67 per cent of all adults live in a household where the main television is connected to a system that allows them to watch additional channels other than terrestrial.¹⁵ The highest proportion of ownership/subscription is via satellite (Table 19).

Table 19: Connection to a digital system and mode of connection

	Percentage	Range (%)
Connection to a digital system		
Not connected	32.8	31.3 – 34.3
Connected to a digital system	67.2	65.7 – 68.7
Type of digital system^A		
Satellite	50.2	48.2 – 52.2
Cable	16.5	15.1 – 18.0
Freeview	32.6	30.8 – 34.5
Broadband	0.4	0.1 – 0.6

Notes:

A. This column does not total 100%. The remaining estimate is for those who did not know their frequency.

Table 20 shows a breakdown of those who are connected to a digital system by different population subgroups. The *statistically significant* findings are:

- Those in younger age groups had significantly higher rates of connection than each of their older counterparts, except when comparing those aged 16-24 with those aged 25-44.
- There was no significant difference in the connection rates between males and females.
- Adults with a limiting disability/ illness had significantly lower rates of connection than both those with a non-limiting and no disability/ illness.
- There was no significant difference in the connection rates between adults from white ethnic backgrounds compared to those from black and minority ethnic backgrounds.
- There was no significant difference in the connection rates between those adults from higher socio-economic groups compared to those from lower socio-economic groups.
- Adults living in rural areas had significantly lower rates of connection than those living in urban areas.

¹⁵ Terrestrial channels include BBC 1, BBC 2, ITV/channel 3, channel 4, and channel 5.

Table 20: Connection to a digital system

	Percentage	Range (%)
Age		
16-24	73.8	69.5 – 78.2
25-44	75.8	73.4 – 78.1
45-64	67.7	64.9 – 70.5
65-74	54.6	50.2 – 59.0
75+	33.9	29.0 – 38.7
Gender		
Male	68.6	66.3 – 70.8
Female	65.9	63.9 – 68.0
Disability		
Limiting disability/ illness	59.4	56.1 – 62.6
Non limiting disability/ illness	70.0	64.5 – 75.5
No disability/ illness	69.3	67.5 – 71.1
Ethnicity		
White	67.3	65.6 – 68.9
Black and minority ethnic	66.2	62.2 – 70.2
Socio-economic group		
Higher	68.4	66.2 – 70.5
Lower	65.5	63.2 – 67.8
Area		
Urban	68.4	66.7 – 70.1
Rural	62.5	59.0 – 65.9
All adults	67.2	65.7 – 68.7

Appendix

Part A: Historic environment sites

1. A city or town with historic character
2. A historic building open to the public (non religious)
3. A historic park, garden or landscape open to the public
4. A place connected with industrial history (i.e. an old factory, dockyard or mine) or historic transport system (i.e. old ship or railway)
5. A historic place of worship attended as a visitor (not to worship)
6. A monument such as a castle, fort or ruin
7. A site of archaeological interest (i.e. roman villa, ancient burial site)
8. A site connected with sports heritage (i.e. Wimbledon) (not visited for the purpose of watching sport)

Part B: Archives

Places that keep archives are usually called a record office or archive centre. Archives are documents that have been created by families, individuals, businesses or organisations and have been specially chosen to keep permanently. They can be written papers such as letters or diaries, maps, photographs or film or sound recordings. Archives are historical documents but do not have to be very old.

Part C: Arts attendance events

1. Exhibition or collection of art, photography or sculpture
2. Craft exhibitions (not crafts market)
3. Event which included video or electronic art
4. Event connected with books or writing
5. Street arts (art in everyday surroundings like parks, streets or shopping centre) or circus (not animals)
6. Carnival
7. Culturally specific festival (for example Mela, Baisakhi, Navratri)
8. Play/drama
9. Other theatre performance (for example musical, pantomime)
10. Opera/opera
11. Classical music performance
12. Jazz performance
13. Other live music event
14. Ballet
15. Contemporary dance
16. African people's dance or south Asian and Chinese dance
17. Other live dance event

Part D: Arts participation activities

1. Ballet
2. Other dance (not for fitness)
3. Sang to an audience or rehearse for a performance (not karaoke)
4. Played a musical instrument to an audience or rehearse for a performance
5. Played a musical instrument for your own pleasure
6. Written music
7. Rehearsed or performed in play/drama
8. Rehearsed or performed in opera/opera
9. Painting, drawing, printmaking or sculpture

10. Photography as an artistic activity (not family or holiday 'snaps')
11. Made films or videos as an artistic activity (not family or holidays)
12. Used a computer to create original artworks or animation
13. Textile crafts such as embroidery, crocheting or knitting
14. Wood crafts such as wood turning, carving or furniture making
15. Other crafts such as calligraphy, pottery or jewellery making
16. Bought any original works of art for yourself
17. Bought any original/handmade crafts such as pottery or jewellery for yourself
18. Bought a novel, or book of stories, poetry or plays for yourself
19. Written any stories or plays
20. Written any poetry

Part E: Active sports

1. Swimming or diving [INDOORS]
2. Swimming or diving [OUTDOORS]
3. BMX, cyclo-cross, mountain biking
4. Cycling [HEALTH, RECREATION, TRAINING, COMPETITION]
5. Bowls [INDOORS]
6. Bowls (lawn) [OUTDOORS]
7. Tenpin bowling
8. Health, fitness, gym or conditioning activities
9. Keepfit, aerobics, dance exercise (include exercise bike)
10. Judo
11. Karate
12. Taekwondo
13. Other Martial Arts (include self-defence, tai chi)
14. Weight training (include body building)
15. Weightlifting
16. Gymnastics
17. Snooker, pool, billiards (exclude bar billiards)
18. Darts
19. Rugby League
20. Rugby Union
21. American football
22. Football (include 5-a-side and 6-a-side) [INDOORS]
23. Football (include 5-a-side and 6-a-side) [OUTDOORS]
24. Gaelic sport (e.g. camogie, Gaelic football, hurling, Irish handball and shinty)
25. Cricket
26. Hockey (exclude ice, roller and street hockey, but include in 'other')
27. Archery
28. Baseball/softball
29. Netball
30. Tennis
31. Badminton
32. Squash
33. Basketball
34. Table tennis
35. Track and field athletics
36. Jogging, cross-country, road running
37. Angling or fishing
38. Yachting or dingy sailing
39. Canoeing
40. Windsurfing or boardsailing
41. Ice skating

42. Curling
43. Golf, pitch and putt, putting
44. Skiing (on snow or on artificial surface; on slopes or grass)
45. Horse riding
46. Climbing/mountaineering (include indoor climbing)
47. Hill trekking or backpacking
48. Motor sports
49. Shooting
50. Volleyball
51. Orienteering
52. Rounders
53. Rowing
54. Triathlon
55. Boxing
56. Waterskiing
57. Lacrosse
58. Yoga
59. Fencing
60. Other type of sport for example roller-blading, street hockey, skateboarding, water polo, surfing, scuba diving, gliding, hang/paragliding, parachuting or parascending

Part F: Moderate intensity level sports

The list of moderate intensity level sports is the same as the list provide in Part E, however, snooker, darts, archery, fishing, shooting and yoga are excluded as they are only ever classified as 'light activities'

To count as a moderate intensity level sport the effort put into the sport needs to be enough to have raised a person's breathing rate.

Part G: Gambling activities

- A. Tickets in the National Lottery Draw (not scratchcards)
- B. Tickets for any other lottery (not scratchcards)
- C. Scratchcards (not those from a newspaper)
- D. Football pools or 'fixed odds' coupons
- E. Bets on horse racing
- F. Bets on dog racing
- G. Bets on events for example football matches or elections
- H. Table games (roulette, cards or dice)
- I. Bingo tickets
- J. Gaming/fruit machines
- K. Private bets (not with a bookmaker) for example playing card games
- L. Other
- M. None of these

BACKGROUND INFORMATION

1. The Taking Part Survey is a new survey that has been commissioned by the DCMS and its partner Non-Departmental Public Bodies: Arts Council England; English Heritage; Museums, Libraries and Archives Council; and, Sport England.
2. The survey was launched in mid-July 2005 and the results in this release contain data from interviews achieved up until mid-October 2005. The total sample size for this period is 5,135.
3. The estimates contained in this release are provisional. The primary reasons for this are because the final weights will not be applied to the data until the full year has been gathered. In the interim period, temporary weights have been applied. Also, the estimates in this release are based on interviews achieved over a three month period. Given this timescale and the nature of the activities, certain estimates will be influenced by this seasonality.
4. Socio-economic group is defined according to the National Statistical Socio Economic Classification (NS-SEC), see http://www.statistics.gov.uk/methods_quality/ns_sec/default.asp. Those in groups 1-4 are classified as higher and those in groups 5-8 are classified as lower. Those whose socio-economic group cannot be classified have been excluded. These variables, and also ethnicity, disability and area type, are measured using the Office for National Statistics harmonised classifications, see <http://www.statistics.gov.uk/about/data/harmonisation> for more information.
5. The survey measures involvement in activities where the purpose is for recreation or leisure, including voluntary work. It excludes involvement in activities where the prime motivation is paid work or academic study. The exceptions to this are attendance to historic environment sites which include visits made for academic study and sports opportunities which exclude refereeing, officiating and coaching.
6. Estimates in the tables have been rounded to one decimal place.
7. The range has been calculated using a 95% confidence interval. This means there is a 95% probability the true percentage lies in the range given. A design factor of 1.18 has been applied.
8. In this report a statistical significance level of 95% has been used. Findings are said to be *statistically significant* if the probability of finding the difference between groups by chance is low (1 in 20).
9. The survey asks about engagement in each sector/activity in turn. As there may be occasions where one participation/attendance covers more than one sector, the proportion of cross-sector culture and sport engagement in two or more sectors/activities are likely to be maximum estimates.
10. For more information about the Taking Part Survey, see: http://www.culture.gov.uk/global/research/taking_part_survey.
11. The fieldwork for the survey is being conducted by BMRB: Social research, see <http://www.bmr.co.uk> for more information.
12. The Department has a Public Service Agreement which relates to a subset of the data included within this report, for more information see: http://www.culture.gov.uk/global/research/taking_part_survey/survey_outputs.

13. National Statistics are produced to high professional standards set out in the *National Statistics Code of Practice*. They undergo regular quality assurance reviews to ensure they meet customer needs. They are produced free from any political interference. See http://www.statistics.gov.uk/about/national_statistics/cop for more information.

14. This report has been produced by Rebecca Aust and Lisa Vine. Acknowledgement goes to colleagues within the DCMS, partner NDPBs and BMRB for their assistance with the quality assurance. For enquiries contact:

Department for Culture Media & Sport
2-4 Cockspur Street
London SW1Y 5DH
enquiries@culture.gov.uk

For enquiries on this release telephone: 0207 211 6112

For general enquiries telephone: 0207 211 6200