



Taking Part: The National Survey of Culture, Leisure and Sport PSA21: Indicator 6 – Rolling annual estimates from the Taking Part survey

Statistical Release

18 March 2010

Contents

1. Key findings	2
2. Background	3
3. PSA21: Indicator 6 – Headline measure	5
4. PSA21: Indicator 6 – Participation by sector	6
5. Headline measure – Trends	7
6. Participation by sector – Trends	9
7. Background note	11

1. Key findings

- In the 12 months to December 2009, 67.3 per cent of adults participated in two or more different cultural or sport sectors.
- While there has been no statistically significant change in the overall participation measure since the baseline year, the latest figures represent a positive upward trend.
- Among the individual sectors:
 - 60.3 per cent engaged in the arts at least three times in the past 12 months
 - 59.2 per cent visited at least two historic environment sites in the past 12 months
 - 45.8 per cent attended a museum, gallery or archive at least once in the past 12 months
 - 37.6 per cent used a public library service at least once in the past 12 months
 - 24.3 per cent participated in moderate intensity level sport and active recreation for at least 30 minutes on at least three separate days during the past week
- Since April 2008 to March 2009, the proportion of people attending a public library decreased significantly (from 39.7 per cent to 37.6 per cent). Meanwhile, the proportion attending at least two historic environment sites increased significantly from 56.9 per cent to 59.2 per cent. Participation in other sectors did not change significantly.

2. Background

The Taking Part Survey measures participation in culture and sport in England. It is the key evidence source for the Department for Culture, Media and Sport, providing reliable national estimates of participation. More broadly, the Taking Part Survey contributes to the evidence base across a wide range of topics including participation in culture and sport, satisfaction and enjoyment with culture and sport, social capital, volunteering and barriers to participation. It also collects an in-depth range of socio-demographic information on respondents.

The Survey is also used to measure progress against Public Service Agreement (PSA) 21's Indicator 6: to increase the percentage of adults (aged 16 and over) who participate in culture or sport by 2010/11. More information on PSA21 can be found in the Background Note at the end of this release.

For the purposes of the PSA indicator, participation is defined as taking part in two or more different cultural or sport sectors at the required frequency of participation:

1. Used a **public library service** at least once in the past 12 months
2. Attended a **museum, gallery or archive** at least once in the past 12 months
3. Engaged in the **arts** at least three times in the past 12 months
4. Visited at least two **historic environment sites** in the past 12 months
5. Participated in 30 minutes of **moderate intensity level sport and active recreation** on three or more days in the past week

The target for Indicator 6 is a statistically significant increase in participation. The minimum movement required to record a statistically significant increase in participation is 2 percentage points¹.

Rolling annual estimates

This report presents updated rolling annual estimates for each element of Indicator 6 using Taking Part data collected from interviews issued between January 2009 and December 2009. Trend data are available from 2005, the first year of the Taking Part survey. Any changes in data collection during this time are detailed in the Technical Note.

Each estimate in this report is based on interviews achieved over a 12-month period, for example October 2006 to September 2007, and uses final weights based on the full year's interviews.

¹ For further details regarding the target and its measurement, see the accompanying Technical Note.

Revisions to the 08/09 Final Baseline

The December 2009 release included a small revision to the baseline results for PSA21 Indicator 6, published in August 2009. This incorporated updated mid-year population estimates and increased the measure of participation in two or more different culture or sport sectors to 66.1 per cent for the 12 month period to April 2009 (compared to 65.9 per cent previously published).

PSA21 Assessment

The next Taking Part survey update will be published in summer 2010 and will be based on the complete results for year 5 (2009/10), providing interim progress against the baseline. A final assessment will be published in summer 2011.

Report structure

The report sets out an estimate for the overall indicator and then presents results for each sector in turn. Supplementary information then provides trends for the overall indicator and for participation in each sector. The Technical Note sets out the definitions of each sector and the methodology used in combining these datasets.

3. PSA21: Indicator 6 – Headline measure

Participation in culture or sport is defined as taking part in two or more different cultural or sport sectors. Table A shows that **67.3** per cent of adults had participated in two or more different cultural or sport sectors during the last 12 months to December 2009. This is not a statistically significant increase from the baseline of 66.1 per cent for the 12 months to April 2009.

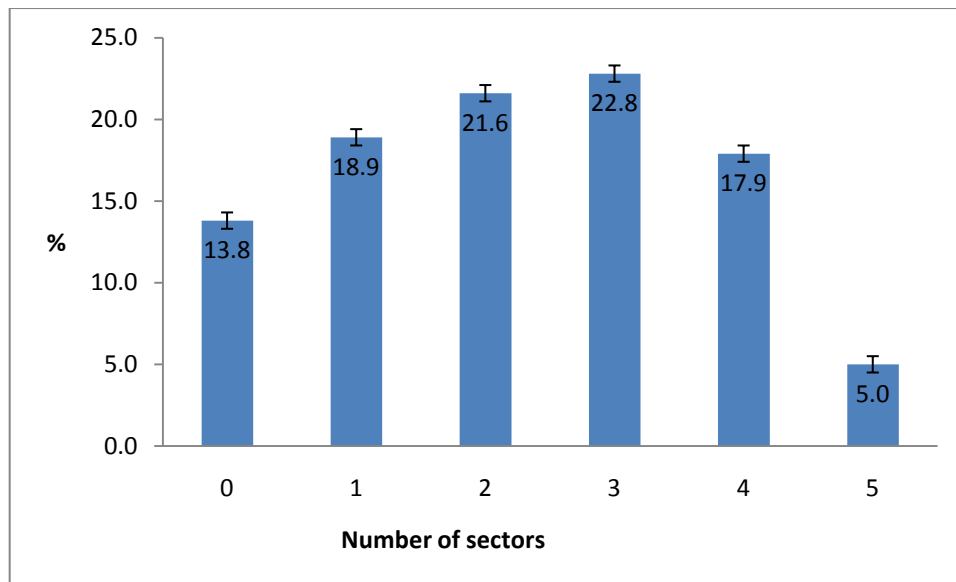
The target for Indicator 6 is a statistically significant improvement by 2010/11. The minimal detectable change in the survey between the baseline year and final assessment year is 2 percentage points.

Table A: Participation in two or more sectors, January 2009 to December 2009

	Percentage	Range
All adults	67.3	+/- 1.5

Chart A shows the number of different cultural or sport sectors in which adults had participated in the past 12 months to December 2009. Of those who did not participate in two or more sectors, 18.9 per cent had participated in one sector and 13.8 per cent had not participated in any sectors. The ranges are from **+/-0.7 to +/- 1.4**.

Chart A: Number of cultural or sport sectors, January 2009 to December 2009



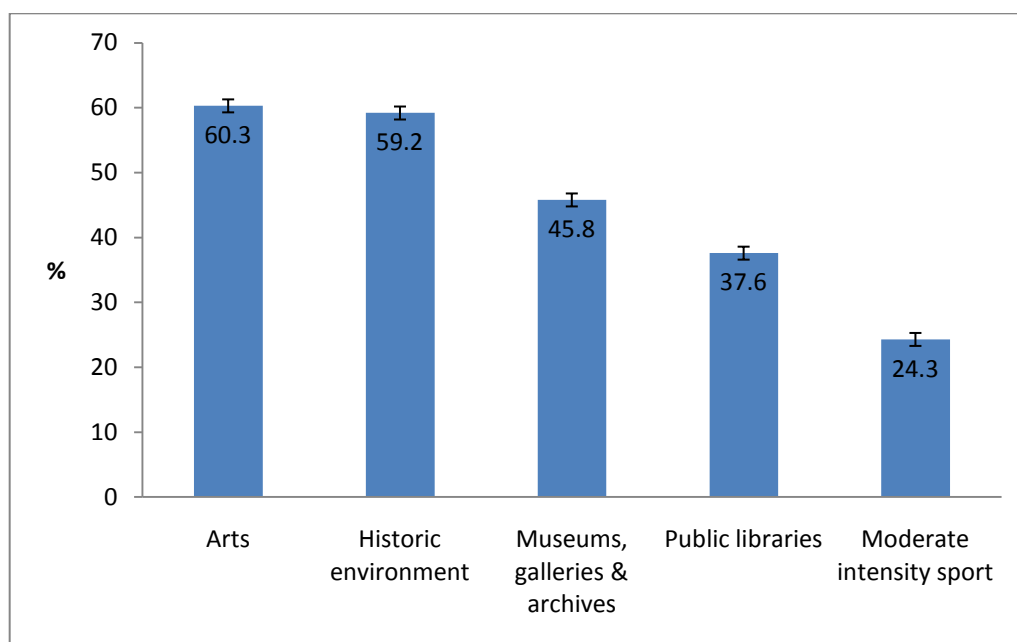
4. PSA21: Indicator 6 - Participation by sector

There are five sector components to Indicator 6. Chart B shows participation in each cultural and sport sector at the required thresholds for the period of January 2009 to December 2009:

- 60.3 per cent of adults had engaged in the arts at least three times in the past 12 months²
- 59.2 per cent of adults had visited at least two historic environment sites in the past 12 months
- 45.8 per cent of adults had attended a museum, gallery or archive at least once in the past 12 months
- 37.6 per cent of adults had used a public library service at least once in the past 12 months
- 24.3 per cent of adults had participated in moderate intensity level sport and active recreation for at least 30 minutes on at least three separate days during the past week³ (see the Background Note for information on DCMS's DSO measure)

The ranges are from **+/-1.4 to +/- 1.6**.

Chart B: All adult participation in individual cultural and sport sectors, January 2009 to December 2009



² For more information about eligible cultural activities, see the accompanying Technical Note.

³ A list of qualifying sports and active recreation activities can be found in the Technical Note. To count towards this indicator, the effort put into the activity needs to be of moderate intensity, i.e. raises their breathing rate (or for walking it needs to be done at a brisk or fast pace). The only exception to this is for those adults aged 65 and over, where some light activities are in scope – indoor and outdoor bowls, yoga, Pilates, croquet and archery.

5. Headline measure - Trends

Participation in culture or sport is defined as taking part in two or more different cultural or sport sectors. The rolling annual series has been created using sector definitions from Taking Part survey for PSA21: Indicator 6. Where the measure of participation for the previous PSA3 target had different sector requirements, survey data for this period has been re-aggregated to match the new definition. See the Background Note for further information on the differences between PSA3 and PSA21.

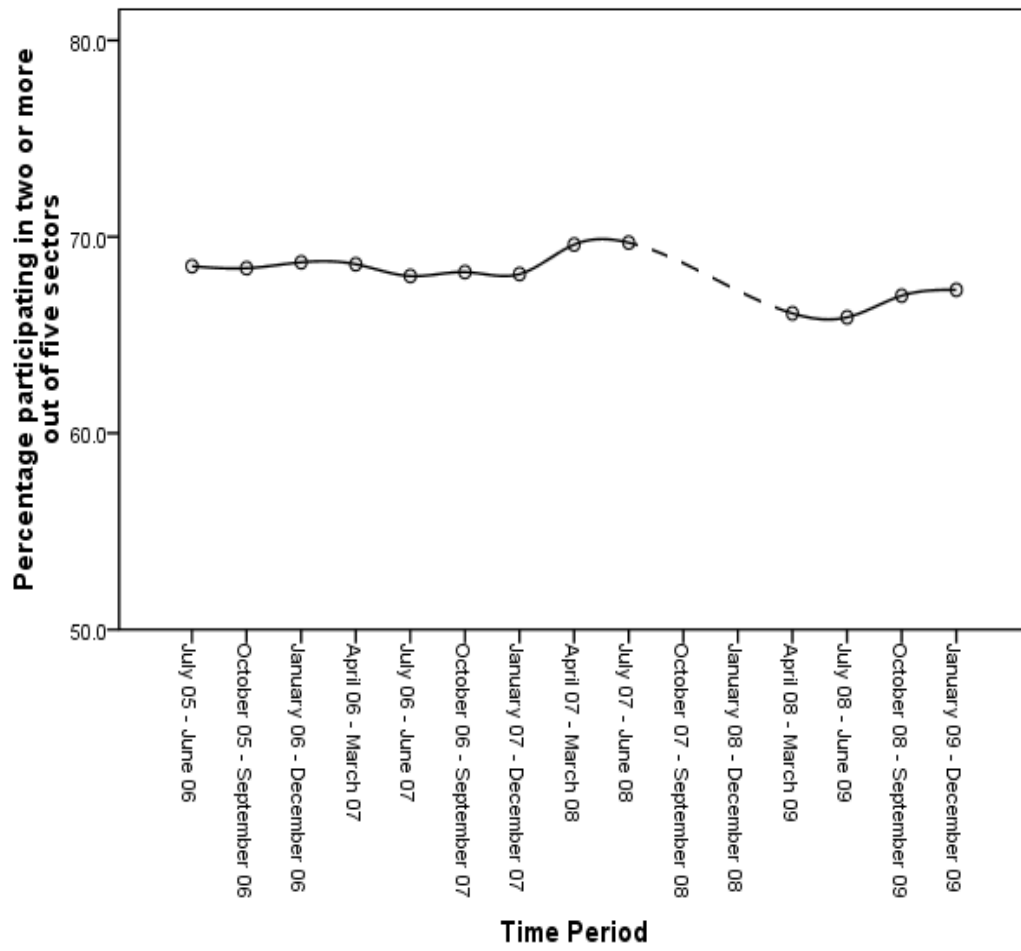
Table B shows changes in participation since July 2005.

Table B: Rolling annual trend in participation in two or more sectors, July 2005 to December 2009

	Percentage
July 2005 – June 2006	68.5
October 2005 – September 2006	68.4
January 2006 – December 2006	68.7
April 2006 – March 2007	68.6
July 2006 – June 2007	68.0
October 2006 – September 2007	68.2
January 2007 – December 2007	68.1
April 2007 – March 2008	69.6
July 2007 – June 2008	69.7
October 2007 – September 2008	na
January 2008 – December 2008	na
April 2008 – March 2009	66.1
July 2008 – June 2009	65.9
October 2008 – September 2009	67.0
January 2009 – December 2009	67.3

It is not possible to construct rolling estimates for the period October 2007 to December 2008 due to this survey period measuring both PSA3 and PSA21 targets. A trend line has been applied to Chart C to address this.

Chart C: Trend of participation in two or more different cultural or sport sectors, July 2005 to December 2009



6. Participation by sector - Trends

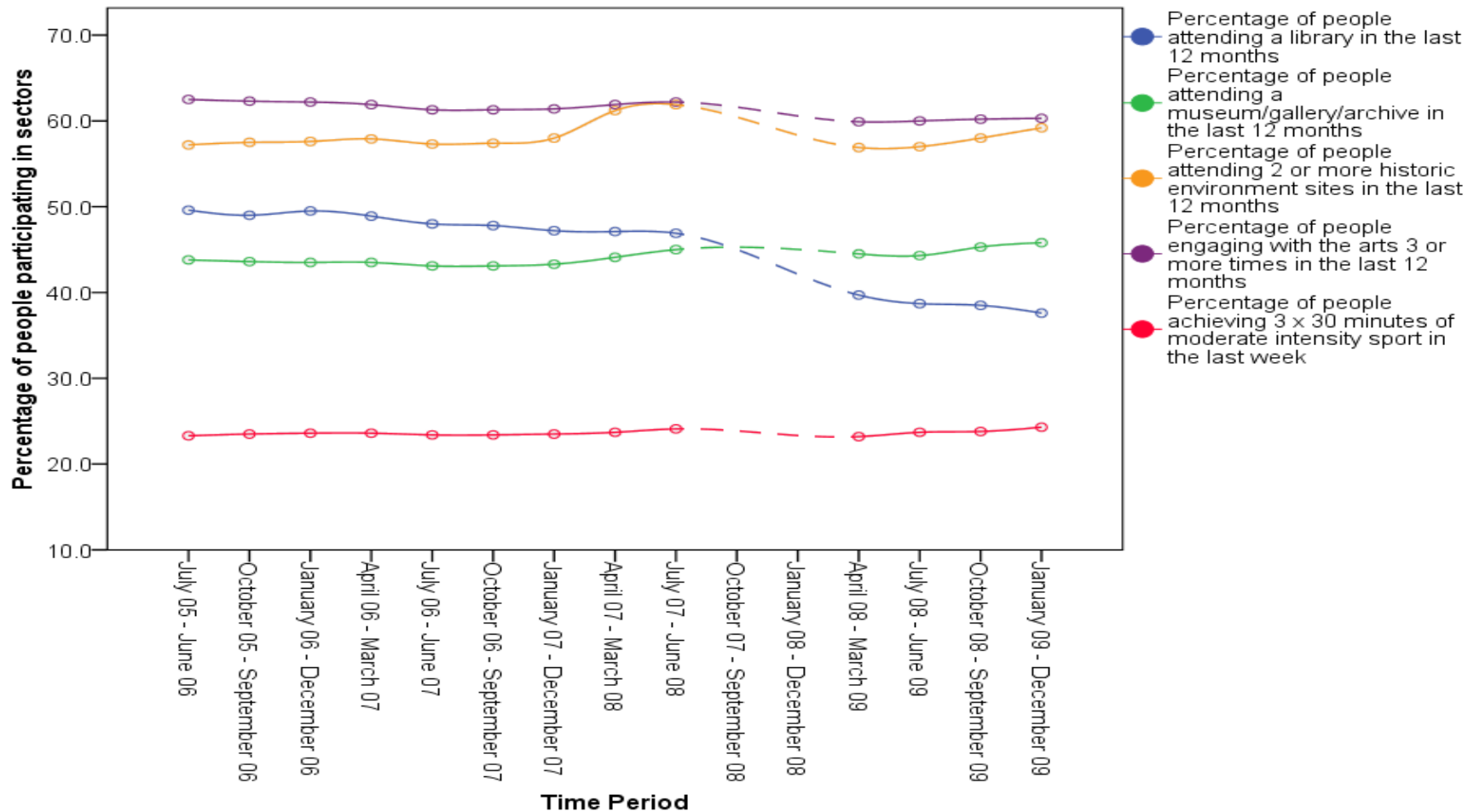
There are five sector components to Indicator 6. Table C and Chart D (overleaf) shows participation in each cultural and sport sector at the required thresholds for the quarters to December 2009. The following table presents this data with the PSA21: Indicator 6 baseline period shown in bold:

Table C: Trend of participation in cultural or sport sectors, July 2005 to December 2009

Quarter	Arts Engagement	Libraries	Museums, galleries, archives	Historic environment	Moderate Intensity Sport
July 2005 – June 2006	62.5	49.6	43.8	57.2	23.3
October 2005 – September 2006	62.3	49.0	43.6	57.5	23.5
January 2006 – December 2006	62.2	49.5	43.5	57.6	23.6
April 2006 – March 2007	61.9	48.9	43.5	57.9	23.6
July 2006 – June 2007	61.3	48.0	43.1	57.3	23.4
October 2006 – September 2007	61.3	47.8	43.1	57.4	23.4
January 2007 – December 2007	61.4	47.2	43.3	58.0	23.5
April 2007 – March 2008	61.9	47.1	44.1	61.2	23.7
July 2007 – June 2008	62.2	46.9	45	61.9	24.1
October 2007 – September 2008	na	na	na	na	na
January 2008 – December 2008	na	na	na	na	na
April 2008 – March 2009	59.9	39.7	44.5	56.9	23.2
July 2008 – June 2009	60.0	38.7	44.3	57.0	23.7
October 2008 – September 2009	60.2	38.5	45.3	58.0	23.8
January 2009 – December 2009	60.3	37.6	45.8	59.2	24.3

Between April 2008 to March 2009 and January 09 to December 09, there was a significant decrease from 39.7 per cent to 37.6 per cent in the percentage of adults who had used a library in the last 12 months. In the same period, there was a significant increase in the proportion of adults attending at least two historic environment sites from 56.9 per cent to 59.2 per cent. There were no significant changes against the baseline for the other sectors.

Chart D: Trend of participation in cultural or sport sectors, July 2005 to December 2009



7. Background note

1. The Taking Part survey was commissioned by the Department for Culture, Media and Sport (DCMS) and its partner Non-Departmental Public Bodies (NDPBs): Arts Council England, English Heritage, Sport England, and the Museums, Libraries and Archives Council.
2. Taking Part is a National Statistic and as such has been produced to the high professional standards set out in the Code of Practice for Official Statistics. National Statistics undergo regular quality assurance reviews to ensure they meet customer needs and are produced free from any political interference. For more information, see <http://www.statisticsauthority.gov.uk/assessment/code-of-practice/code-of-practice-for-official-statistics.pdf>
3. The results presented here are based on interviews issued between July 2005 and December 2009. The total sample size for this period is 97,670. The sample size for the latest period reported, January 2009 to December 2009 is 8,751.
4. Taking Part reported PSA3 estimates on a July to July data collection period. However, for the purposes of PSA21 it has moved to an April to April collection period. Data collection began in the final quarter of the 2007/08 survey year (April 2008) using split sampling.
5. Other differences for PSA21 from PSA3 are:
 - Library attendance was not included in PSA3
 - Archive attendance was not included in PSA3. This is now asked alongside museum and gallery attendance.
 - Attendance at only one type of historic environment site was required for PSA3
 - Arts participation and attendance were measured separately for PSA3 and, for the attendance target, attendance at two different events was required. Additional activities are now eligible for participation in the arts.
 - Additional sport activities are now included for those aged 65 and over where these are deemed equivalent to moderate intensity for older people, for example croquet and archery.
6. The survey measures participation by adults (aged 16 and over) living in private households in England. No geographical restriction is placed on where the activity or event occurred. For the purposes of PSA21: Indicator 6, participation in these activities must be for the purpose of recreation or leisure, including voluntary work. It excludes involvement in activities where the prime motivation is paid work or academic studies. The exceptions to this are attendance at historic environment sites which includes visits made for academic study, and sports participation which exclude volunteering, teaching, coaching and refereeing.
7. For more information about eligible cultural and sporting activities, please see the accompanying Technical Note.
8. The range has been calculated using a 95% confidence interval. This means there is a 95% probability the true percentage lies in the range given. All estimates have been rounded to one decimal place. An overall design factor of **1.56** has been applied to the dataset for the period January 2009 to December 2009. Individual design factors have been calculated for each sector in this period, ranging from **1.43**

to 1.72. Statistical significance tests have been run at the 95% level. This means the probability that the difference happened by chance is low (1 in 20).

9. The data are weighted to ensure the representativeness of the Taking Part sample. There are two types of weighting: i) to compensate for unequal probabilities of selection; and ii) to adjust for differential non-response.

10. A small number of cases in the 2008/09 estimates (19) are affected by a minor error measuring frequency of voluntary engagement with the historic environment and the arts in the first three quarters of the fieldwork year. The impact on the provisional baselines is less than 0.1 per cent, which is not a statistically significant difference. This error was rectified for the final quarter of the year.

11. PSA21: to build more cohesive, empowered and active communities was agreed as part of the 2008-11 spending review period. While Communities and Local Government are the lead department for PSA 21, DCMS have responsibility for Indicator 6: to increase the percentage of adults (aged 16 and over) who participate in culture and sport by 2010/11.

12. PSA21: Indicator 6 also forms one of DCMS's Departmental Strategic Objectives (DSO1: Indicator 3). However, recreational walking and recreational cycling are excluded from the DSO definition of moderate intensity sport. When these activities are excluded, participation in moderate intensity sport on three occasions during the past week is reduced but does not have a statistically significant impact on the composite indicator.

13. For more information about the Taking Part survey, including previous publications, see http://www.culture.gov.uk/reference_library/research_and_statistics/4828.aspx

14. For more information about the Department's PSA targets, see http://www.culture.gov.uk/about_us/our_priorities_and_targets/default.aspx

15. The fieldwork for the survey is being conducted by TNS-BMRB. For more information, see <http://www.tns-bmr.co.uk>

16. This report has been produced by Neil Wilson, Christopher McKee and Reannan Rottier. Acknowledgement goes to colleagues within the DCMS, partner NDPBs and BMRB for their assistance with the quality assurance.

17. For enquiries contact:

Department for Culture Media and Sport
2-4 Cockspur Street
London
SW1Y 5DH
enquiries@culture.gov.uk

The responsible statistician for this release is Neil Wilson
For enquiries on this release telephone: 0207 211 6968
For general enquiries telephone: 0207 211 6200