



Taking Part: The National Survey of Culture, Leisure and Sport PSA21: Indicator 6 – Final baseline results from the 2008/09 Taking Part survey

Statistical Release

13 August 2009

Contents

1. Background to PSA21	2
2. Key findings	3
3. PSA21: Indicator 6 – Final baseline	4
4. Participation by sector	5
5. Sector contributions to the target	10
6. Participation by population sub-groups	12
7. Cohesive, empowered and active communities – linking cultural and sporting participation to other indicators in PSA21	14
8. Background note	18

1. Background to PSA21

Public Service Agreement target 21 (PSA21), “Build more cohesive, empowered and active communities”, was agreed as part of the 2008-11 spending period. The lead Department for PSA21 is Communities and Local Government. The PSA is made up of six indicators, and DCMS leads on Indicator 6.

The aim of Indicator 6 is to increase the percentage of adults (aged 16 and over) who participate in culture or sport by 2010/11. Participation is defined as taking part in two or more different cultural or sport sectors at the required frequency of participation (threshold level):

1. Used a **public library service** at least once in the past 12 months
2. Attended a **museum, gallery or archive** at least once in the past 12 months
3. Engaged in the **arts** at least three times in the past 12 months
4. Visited at least two **historic environment sites** in the past 12 months
5. Participated in 30 minutes of **moderate intensity level sport and active recreation** on three or more days in the past week

Performance assessment will be measured using the level of change recorded by the Taking Part survey. The target for Indicator 6 is a statistically significant improvement in participation. The minimum movement required for the survey to record a statistically significant increase in participation is 2 percentage points¹.

Final baseline results

This report presents final baseline results for each element of the indicator. It uses Taking Part data collected from interviews issued between mid-April 2008 and mid-April 2009. Previous interim baseline estimates published in April 2009 are superseded by the new results.

The estimates in this report are based on interviews achieved over the 12-month period and use final weights based on the full year’s interviews.

Final assessment

Interim progress against this baseline will be assessed in summer 2010, with the final assessment published in summer 2011.

Report structure

The report sets out a final baseline estimate for the overall indicator and then presents results for each sector in turn. Supplementary information then provides further depth on the participation data collected. This includes:

- analysis of the contribution by sector to the composite indicator
- a breakdown of participation by key population sub-groups
- participation with respect to social and civic engagement and volunteering levels

¹ For further details regarding the target and its measurement, see the accompanying Technical Note.

2. Key findings

Key findings are as follows:

- 65.9 per cent of adults had taken part in two or more different cultural or sport sectors at the required frequency of participation (threshold level) during the past 12 months. Of the 65.9 per cent:
 - More than four-fifths (80.8%) had participated in the arts in the past 12 months
 - Almost the same proportion (78.6%) had visited historic environment sites
 - Two-thirds (64.9%) had visited a museum, gallery or archive
 - More than half (53.5%) had used a public library
 - Just under a third (30.9%) had participated in moderate intensity sport in the past week.

Please see section 4 for estimates of participation in individual sectors for the whole population.

- Around a fifth (20.2%) of adults had participated in just one cultural or sport sector and more than one in 10 (13.9%) had not participated in any sectors
- Of the 20.2 per cent of adults who participated in only one sector, the most common sector for participation at the required threshold was the arts (32.7%), followed by the historic environment (25.5%)
- There were statistically significant differences in those meeting the overall participation threshold within population sub-groups, for example:
 - Females had significantly higher rates of participation than males
 - Those from White backgrounds had significantly higher rates of participation than those from Black or minority ethnic backgrounds
 - Adults from upper socio-economic groups had significantly higher rates of participation than those from lower socio-economic groups
 - Adults aged 25-64 had significantly higher rates of participation than those aged 16-24 and those aged 65 and over
- Adults who had met the participation threshold (two or more different cultural or sport sectors) gave different responses to a range of 'social capital' questions to those who had not met it, for instance:
 - Those who met the participation threshold were significantly more likely than those who did not to say that many of the people in their neighbourhood could be trusted
 - They also had significantly higher levels of being fairly or very satisfied with their area as a place to live
 - Those who met the threshold were significantly more likely than those who did not to have been involved in clubs, groups or organisations
 - They were also significantly more likely to feel they had a small amount or lot of influence over the quality and variety of local cultural and sporting facilities

It should be noted that these factors show a correlation in the relationships but do not determine causality between them.

3. PSA21: Indicator 6 – Final baseline

Participation in culture or sport is defined as taking part in two or more different cultural or sport sectors. Table A shows that **65.9** per cent of adults had participated in two or more different cultural or sport sectors during the past 12 months.

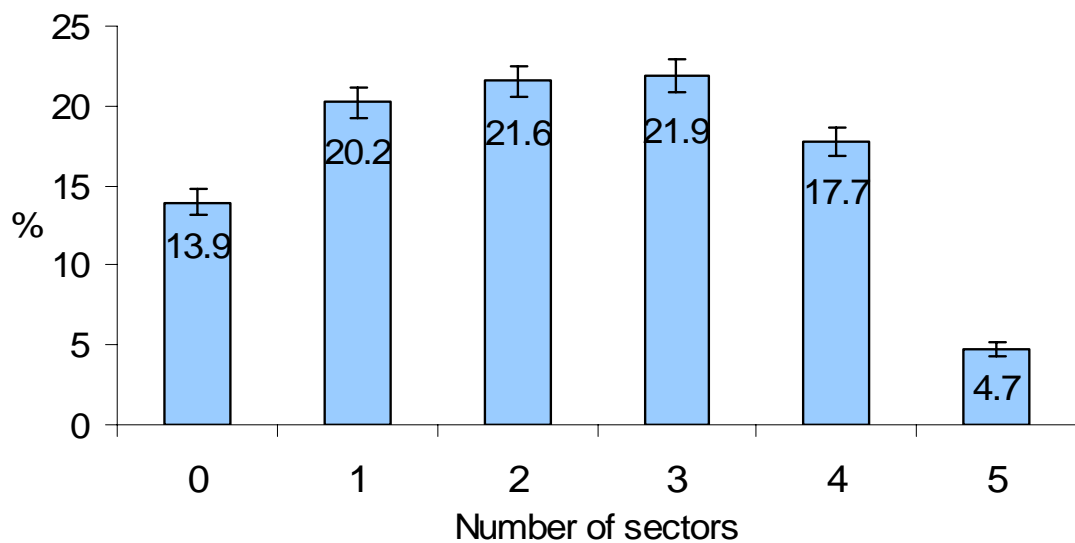
The target for Indicator 6 is a statistically significant improvement by 2010/11. The minimal detectable change in the survey is 2 percentage points.

Table A: Final baseline estimate – participation in two or more sectors

	Percentage	Range
All adults	65.9	+/- 1.1

Chart A shows the number of different cultural or sport sectors in which adults had participated in the past 12 months. 13.9 per cent had not participated in any sectors and 20.2 per cent had participated in one sector. The ranges are from +/- 0.5 to +/- 1.0.

Chart A: Number of cultural or sport sectors



4. Participation by sector

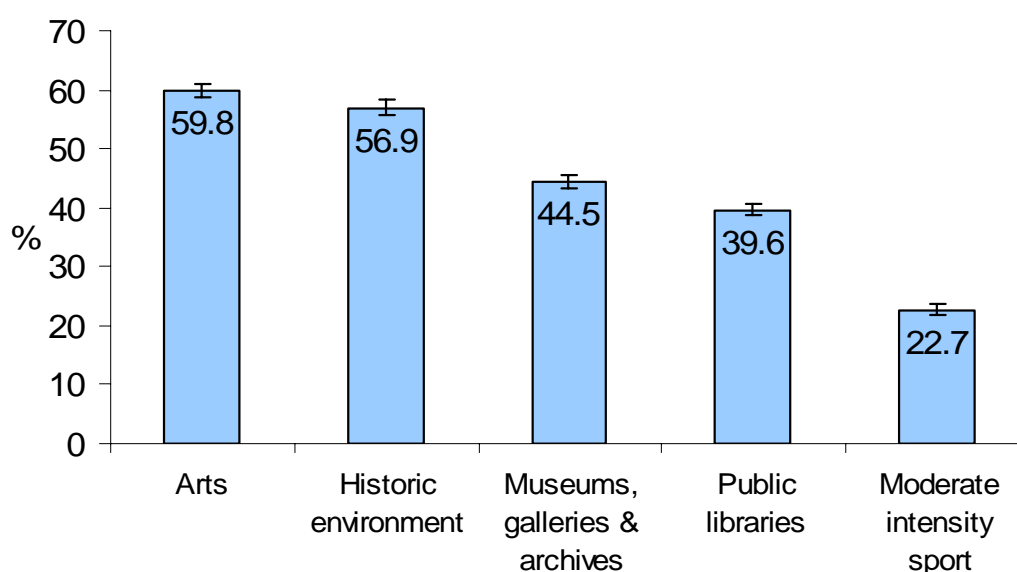
4.1 Participation in individual sectors

There are five sector components to Indicator 6. Chart B shows participation in each cultural and sport sector at the required thresholds:

- 59.8 per cent of adults had engaged in the arts at least three times in the past 12 months²
- 56.9 per cent of adults had visited at least two historic environment sites in the past 12 months
- 44.5 per cent of adults had attended a museum, gallery or archive at least once in the past 12 months
- 39.6 per cent of adults had used a public library service at least once in the past 12 months
- 22.7 per cent of adults had participated in moderate intensity level sport and active recreation for at least 30 minutes on at least three separate days during the past week³ (see Background Note 11 for information on DCMS's DSO measure)

The ranges are from +/- 0.9 to +/- 1.3.

Chart B: All adult participation in individual cultural and sport sectors



² For more information about eligible cultural activities, see the accompanying Technical Note.

³ A list of qualifying sports and active recreation activities can be found in the Technical Note. To count towards this indicator, the effort put into the activity needs to be of moderate intensity, i.e. raises their breathing rate (or for walking it needs to be done at a brisk or fast pace). The only exception to this is for those adults aged 65 and over, where some light activities are in scope – indoor and outdoor bowls, yoga, Pilates, croquet and archery.

4.2 Engagement in the arts – further information

Chart C shows the number of times adults had engaged in the arts in the past 12 months. Around a fifth (24.3%) had not engaged in the arts at all, almost one in ten (8.9%) had engaged once and only a small percentage (7.0%) had engaged twice. Confidence interval ranges are shown in brackets.

Chart C: Number of arts engagements

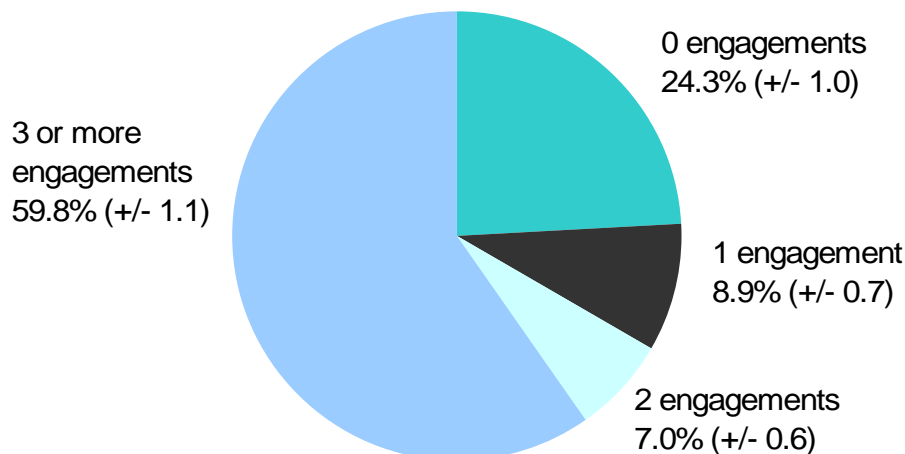


Table B shows that, of all adults, the most common type of arts activity participated in was craft (e.g. textiles, wood, metal work, pottery, calligraphy etc) (16.9%), followed by playing a musical instrument (10.9%) and doing visual arts (e.g. painting, drawing, printmaking or sculpture) (10.8%).

Table B: Participation in arts activities

Arts activities	Percentage	Range
Craft	16.9	+/- 0.8
Musical instrument	10.9	+/- 0.6
Visual art	10.8	+/- 0.6
Photography	8.6	+/- 0.6
Dance	8.2	+/- 0.6
Digital art	8.2	+/- 0.5
Creative writing	5.0	+/- 0.4
Singing	3.1	+/- 0.4
Book club	2.7	+/- 0.3
Written music	2.4	+/- 0.3
Film or video-making	1.9	+/- 0.3
Theatre	1.8	+/- 0.3
Carnival	1.6	+/- 0.2
Circus	1.3	+/- 0.2
Opera or musical theatre	0.9	+/- 0.2
Street arts	0.7	+/- 0.2

Similarly, Table C shows that, of all adults, the most common type of arts event attended was a live music performance (34.2%), followed by the theatre (28.3%) and opera or musical theatre (24.1%).

Table C: Attendance at arts events

Arts events	Percentage	Range
Live music performance	34.2	+/- 1.0
Theatre	28.3	+/- 0.9
Opera or musical theatre	24.1	+/- 0.9
Visual art exhibition	18.2	+/- 0.8
Street arts	16.4	+/- 0.7
Carnival	12.1	+/- 0.7
Craft exhibition	11.2	+/- 0.6
Live dance event	11.0	+/- 0.6
Circus	4.2	+/- 0.4
Event with video or digital art	3.9	+/- 0.4
Culturally specific festival	3.8	+/- 0.4
Event connected to books or writing	3.1	+/- 0.3

4.3 Visits to historic environment sites – further information

Chart D shows the number of historic environment sites that adults had visited. Almost a third (31.6%) had not visited any sites and around one in ten (11.4%) had visited one site. Ranges are shown in brackets.

Chart D: Number of visits to historic environment sites

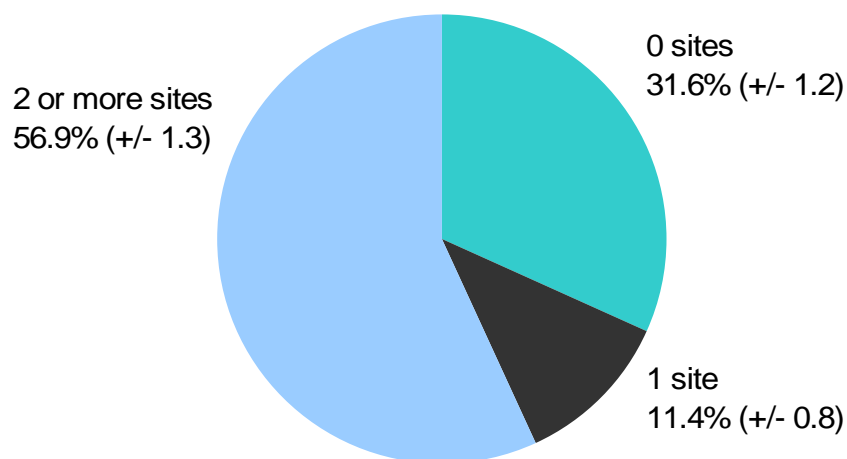


Table D shows that just over half (51.0%) of all adults had visited a city or town with historic character in the past 12 months, and more than a third (38.0%) had visited a historic park or garden open to the public.

Table D: Types of historic environment site visited

Historic environment sites ⁴	Percentage	Range
A city or town with historic character	51.0	+/- 1.2
A historic park, garden or landscape open to the public	38.0	+/- 1.1
A monument such as a castle, fort or ruin	35.9	+/- 1.1
A historic building open to the public (non religious)	35.3	+/- 1.1
A historic place of worship attended as a visitor	25.8	+/- 1.0
A place connected with history or historic transport system	19.9	+/- 0.9
A site of archaeological interest	15.1	+/- 0.8
A site connected with sports heritage	5.0	+/- 0.5

4.4 Sport and active recreation – further information

Chart E shows the number of days in the past week on which adults had participated in moderate intensity sport for at least 30 minutes. More than half (58.5%) had not participated on any days, one in ten (10.8%) had participated on one day and fewer than one in ten (8.0%) had participated on two days. Ranges are shown in brackets.

Chart E: Number of days of moderate intensity level sport

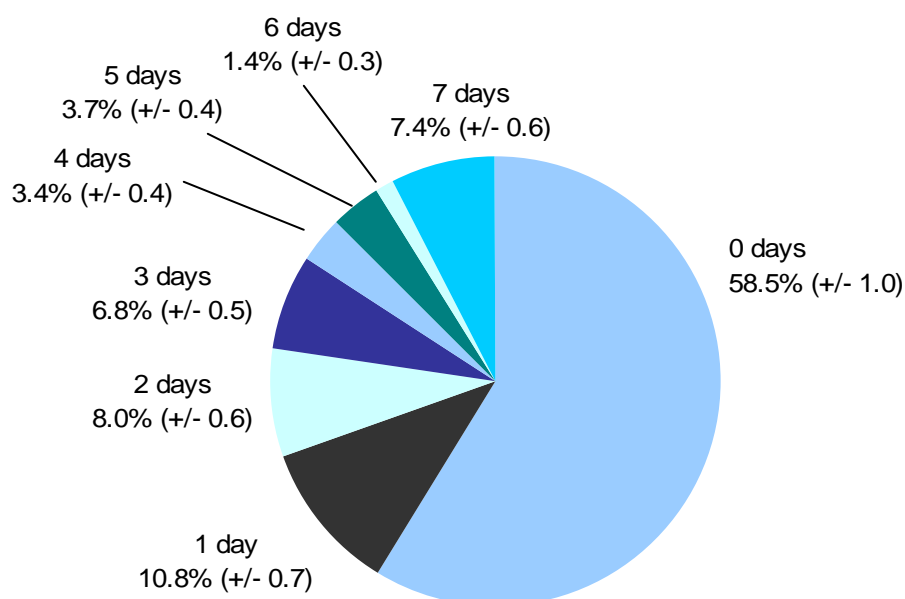


Table E shows that, of all adults, the most common sport participated in at moderate intensity level at least once in the past week was recreational walking (16.2%). The second most common sport was health, fitness, gym or conditioning activities (10.9%) followed by swimming or diving (6.3%).

⁴ Note that, due to the routing of questions in the survey, information on visits to *individual* historic environment sites relates to any purpose (i.e. leisure time, paid work, academic study or work). Visits to historic sites more generally – for the PSA21 definition – exclude visits for the purposes of work.

Table E: Top ten sports participated in for at least 30 minutes on at least one occasion in the past week at moderate intensity level

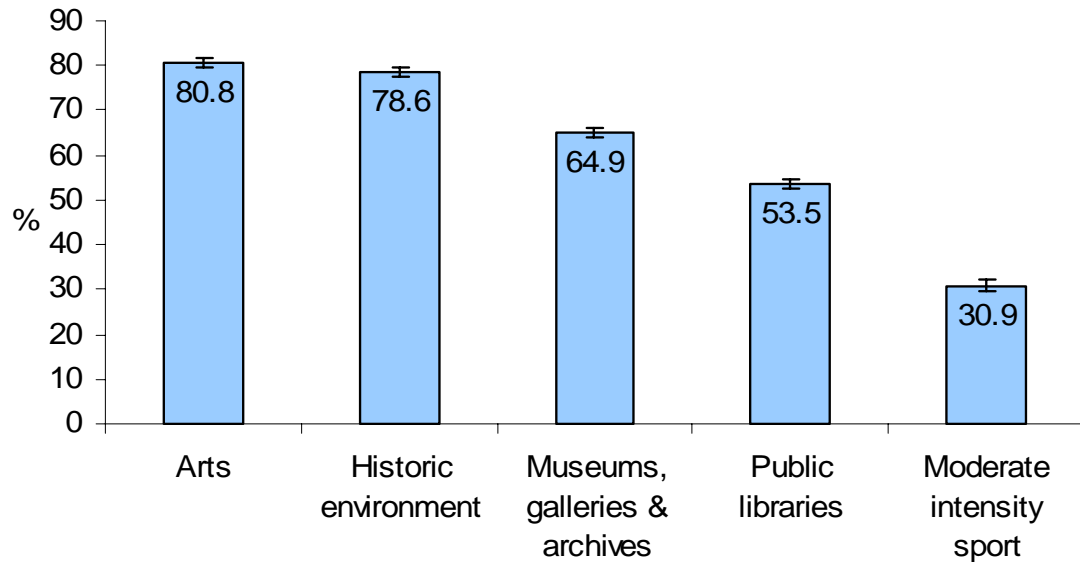
Type of sport	Percentage	Range
Recreational walking	16.2	+/- 0.7
Health, fitness, gym, conditioning & weightlifting	10.9	+/- 0.6
Swimming or diving – indoor or outdoor	6.3	+/- 0.5
Cycling – including recreational, training, competition, BMX, mountain biking etc	5.4	+/- 0.5
Football – indoor or outdoor (including 5 & 6-a-side)	4.6	+/- 0.4
Athletics – track or field, also jogging, cross-country and road running	3.9	+/- 0.4
Keep-fit, aerobics, dance exercise	3.8	+/- 0.4
Badminton	1.2	+/- 0.2
Golf	1.1	+/- 0.2
Tennis	0.9	+/- 0.2

5. Sector contributions to the target

The PSA21: Indicator 6 target focuses on participation in two or more cultural or sport sectors. This section considers the level of contribution by each sector to the baseline estimate.

The PSA21: Indicator 6 final baseline shows that 65.9 per cent of adults participated in two or more cultural or sport sectors at the required sector thresholds. Chart F shows levels of participation in each sector by this group. More than four-fifths (80.8%) participated in the arts in the past 12 months, and almost the same proportion (78.6%) visited historic environment sites.

Chart F: Participation in culture and sport sectors by those adults meeting the PSA21 target of two or more different sectors



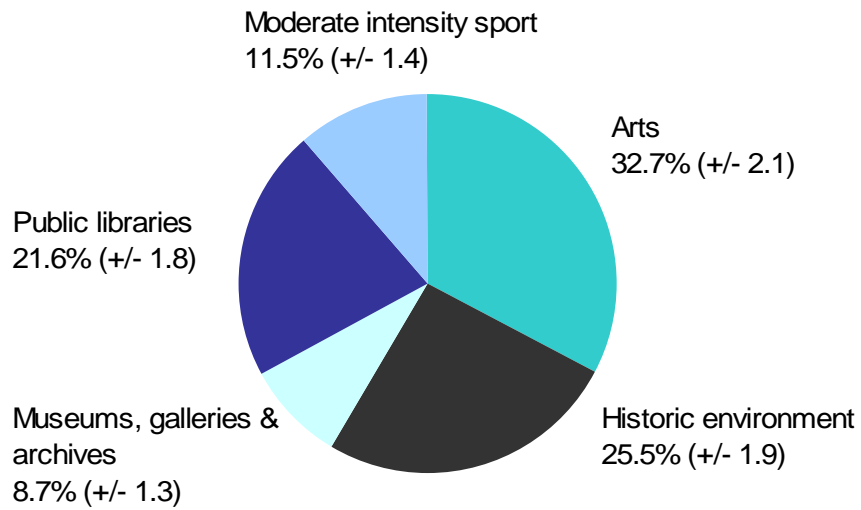
For those adults who participated in two or more different sectors, Table F shows what the most common and least common second sector was. For example, for those people who visited a museum, gallery or archive in the past 12 months, the most common other sector they participated in was the arts (78.5%) and the least common other sector they participated in was moderate intensity sport (27.8%). Arts was the most common second activity for all sectors (for arts, the most common was historic environment), and moderate intensity sport was the least common for all sectors (for sport, the least common was libraries).

Table F: Of those doing one sector, what other sectors had they participated in?

First sector	Most common other sector (%)	Least common other sector (%)
Arts	Historic environment 69.9	Moderate intensity sport 26.2
Historic environment	Arts 73.5	Moderate intensity sport 26.7
Museums, galleries & archives	Arts 78.5	Moderate intensity sport 27.8
Libraries	Arts 69.7	Moderate intensity sport 25.2
Moderate intensity sport	Arts 69.0	Libraries 43.9

Of the 20.2 per cent of adults who participated in only one cultural or sport sector, Chart G shows that the most common sector for participation was the arts (32.7%), followed by the historic environment (25.5%).

Chart G: Of adults participating in one sector, which sector they have participated in



6. Participation by population sub-groups

PSA21: Indicator 6 measures participation by adults overall, rather than focusing on any population sub-groups. However, it can be useful to see where variations in participation occur.

Table G shows participation in two or more sectors by key population sub-groups, based on gender, disability/illness, ethnicity, religion, socio-economic group, age and qualifications. There are the following statistically significant differences:

- *Gender*: Females had significantly higher rates of participation than males
- *Disability/illness*: Adults with a non-limiting or no disability/illness had significantly higher rates of participation than those with a limiting disability/illness
- *Ethnicity*: Those from White backgrounds had significantly higher rates of participation than those from Black or minority ethnic backgrounds
- *Socio-economic group*: Adults from upper socio-economic groups had significantly higher rates of participation than those from lower socio-economic groups
- *Religion*: Adults who reported their religion as Muslim had significantly lower rates of participation than all of the remaining religious groups. Those who reported to have no religion had significantly higher rates of participation than those who reported their religion as Christian
- *Age*: Adults aged 25-44 and 45-64 had significantly higher rates of participation than those aged 16-24 and those aged 65 and over. Those aged 75 and over had significantly lower rates of participation than all other age groups
- *Qualifications*: Adults with no formal qualifications had significantly lower rates of participation than those with some form of qualification. Adults with A-levels or above had significantly higher rates of participation than all other groups. Those with some form of other qualification (the level of which is unknown) had lower levels of participation than those with below A-level qualifications

Table G: Participation in two or more cultural or sport sectors during the past 12 months, by key population sub-groups

Population sub-groups ⁵	Percentage	Range
<i>Gender:</i>		
Male	64.6	+/- 1.5
Female	67.1	+/- 1.3
<i>Disability/illness:</i>		
Limiting disability/illness	51.9	+/- 2.4
Non-limiting disability/illness	69.4	+/- 1.0
<i>Ethnicity:</i>		
Black or minority ethnic	57.4	+/- 3.5
White	66.8	+/- 1.2
<i>Socio-economic group:</i>		
Upper socio-economic group	75.1	+/- 1.2
Lower socio-economic group	52.5	+/- 1.6

⁵ See Background Note 10 for definitions of population sub-groups.

Population sub-groups⁵	Percentage	Range
<i>Religion:</i>		
No religion	68.9	+/- 1.9
Christian	65.5	+/- 1.2
Hindu	62.9	+/- 8.9
Muslim	50.5	+/- 5.5
Other religion	61.9	+/- 8.7
<i>Age:</i>		
16-24	62.6	+/- 3.0
25-44	70.3	+/- 1.7
45-64	69.3	+/- 1.6
65-74	64.5	+/- 2.5
75+	45.2	+/- 2.8
<i>Qualifications:</i>		
No qualifications	41.3	+/- 2.0
Other qualifications – level unknown	54.2	+/- 5.2
Below A-levels	61.2	+/- 2.2
Trade apprenticeships	57.6	+/- 4.6
A-levels and above	80.3	+/- 1.2

7. Cohesive, empowered and active communities – linking cultural and sporting participation to other indicators in PSA21

PSA21 has the overall agenda of building more cohesive, empowered and active communities. The six indicators within this target are:

- Indicator 1: The percentage of people who believe people from different backgrounds get on well together in their local area
- Indicator 2: The percentage of people who have meaningful interactions with people from different backgrounds
- Indicator 3: The percentage of people who feel that they belong to their neighbourhood
- Indicator 4: The percentage of people who feel that they can influence decisions in their locality
- Indicator 5: A thriving third sector
- Indicator 6: The percentage of people who participate in culture and sport

The Taking Part survey provides the measure for Indicator 6 but also asks respondents a number of questions around the topic of social capital⁶. These questions can be analysed with respect to whether or not people have met the participation target (defined as taking part in two or more of the different cultural and sport sectors to the required threshold level). It should be noted that these factors show a correlation in the relationships but do not determine causality between them.

7.1 Attitudes towards neighbourhood

Table H shows a comparison between those who met the PSA21 participation threshold and those who did not across some of the survey questions that relate to neighbourhoods. There are the following statistically significant differences:

- Those who met the participation threshold were significantly more likely than those who did not to say that many of the people in their neighbourhood could be trusted
- Those who met the threshold also had significantly higher levels of being fairly or very satisfied with their area as a place to live compared to those who did not meet it

Table H: Comparison of neighbourhood measures between those who met the participation threshold and those who did not

Question	Percentage	Range
<i>Would you say you know many of the people in your neighbourhood?</i>		
Met participation threshold	31.7	+/- 1.2
Not met participation threshold	30.1	+/- 1.7

⁶ Social capital has been defined as 'features of social organisation, such as trust, norms and networks that can improve the efficiency of society by facilitating co-ordinated actions'. Putnam, R. D., with R. Leonardi and R. Y. Nanetti (1993). *Making democracy work: Civic traditions in modern Italy*. Princeton, NJ: Princeton University Press

Question	Percentage	Range
<i>Would you say that many of the people in your neighbourhood can be trusted?</i>		
Met participation threshold	44.4	+/- 1.3
Not met participation threshold	32.6	+/- 1.7
<i>Are you fairly/very satisfied with this area as a place to live?</i>		
Met participation threshold	89.6	+/- 0.8
Not met participation threshold	86.2	+/- 1.2

7.2 Involvement in clubs, groups and organisations

Table I shows a similar comparison between those who met the participation threshold and those who do not, but across levels of involvement clubs, groups and organisations within the past 12 months. There are the following statistically significant differences:

- Those who met the participation threshold were significantly more likely than those who did not to have been involved in clubs, groups or organisations
- Of those involved in groups, people who met the participation threshold were significantly more likely than those who did not to be involved in local community and neighbourhood groups, groups for children or young people, and adult education groups
- There was no significant difference in levels of involvement in groups for older people

Table I: Comparison of club, group and organisation involvement between those who met the participation threshold and those who did not

Question	Percentage	Range
<i>Have you been involved in clubs, groups or organisations in the past 12 months?</i>		
Met participation threshold	53.0	+/- 1.4
Not met participation threshold	29.3	+/- 1.8
<i>Have you been involved in local community or neighbourhood groups?</i>		
Met participation threshold	14.4	+/- 1.4
Not met participation threshold	9.6	+/- 2.2
<i>Have you been involved in groups for children or young people?</i>		
Met participation threshold	13.2	+/- 1.3
Not met participation threshold	8.6	+/- 2.1
<i>Have you been involved in adult education groups?</i>		
Met participation threshold	7.7	+/- 1.1
Not met participation threshold	3.1	+/- 1.3

Have you been involved in groups for older people?

Met participation threshold	4.9	+/- 0.9
Not met participation threshold	5.9	+/- 1.7

7.3 Influencing local decision-making

Table J compares the level of influence people feel they have over local sporting and cultural facilities, by whether or not they have met the participation threshold. For the purposes of this analysis, people who feel they have either a small amount of influence or a lot of influence are grouped together (those who feel they have no influence are excluded). There are the following statistically significant differences:

- Those who met the participation threshold were significantly more likely than those who did not to feel they had a small amount or lot of influence over the quality and variety of local cultural facilities
- Those who met the participation threshold were also significantly more likely to feel they had a small amount or lot of influence over the quality and variety of local sporting facilities

Table J: Comparison of level of influence people feel they have over local sporting and cultural facilities between those who met the participation threshold and those who did not

Question	Percentage	Range
<i>Do you have a small amount/ lot of influence over the quality and variety of local cultural facilities?</i>		
Met participation threshold	12.7	+/- 0.8
Not met participation threshold	5.8	+/- 0.8
<i>Do you have a small amount/ lot of influence over the quality and variety of local sporting facilities?</i>		
Met participation threshold	12.5	+/- 0.8
Not met participation threshold	8.1	+/- 0.9

7.4 Volunteering

Table K shows a comparison between volunteering activity by those who met the participation threshold and those who did not. There are the following statistically significant differences:

- There were significantly higher levels of volunteering in both the 'culture or sport' and 'non culture and sport' areas for those who met the participation threshold compared to those who did not

Table K: Comparison of volunteering activity between those who had met the participation threshold and those who did not

Question	Percentage	Range
<i>During the past 12 months have you volunteered in culture or sport?</i>		
Met participation threshold	10.0	+/- 0.7
Not met participation threshold	3.6	+/- 0.6
<i>During the past 12 months have you volunteered in areas that were not culture or sport?</i>		
Met participation threshold	21.3	+/- 1.0
Not met participation threshold	9.2	+/- 1.0

8. Background note

1. The Taking Part survey was commissioned by the Department for Culture, Media and Sport (DCMS) and its partner Non-Departmental Public Bodies (NDPBs): Arts Council England, English Heritage, Sport England, and the Museums, Libraries and Archives Council.

2. Taking Part is a National Statistic and as such has been produced to the high professional standards set out in the Code of Practice for Official Statistics. National Statistics undergo regular quality assurance reviews to ensure they meet customer needs and are produced free from any political interference. For more information, see <http://www.statisticsauthority.gov.uk/assessment/code-of-practice/code-of-practice-for-official-statistics.pdf>

3. The results presented here are based on interviews issued between mid-April 2008 and mid-April 2009. The total sample size for this period is 14,452. Sample sizes for the sub-groups presented in the supplementary information section are presented below.

Male	6,438	Upper socio-economic group	7,796
Female	8,014	Lower socio-economic group	5,855
Limiting disability/illness	3,388	16-24	1,275
Non-limiting disability/illness	11,023	25-44	4,990
		45-64	4,537
Black or minority ethnic	1,451	65-74	1,935
White	12,979	75+	1,712
No religion	3,616	No qualifications	3,616
Christian	9,886	Below A-levels	2,867
Hindu	170	Trade apprenticeships	680
Muslim	487	A-levels and above	6,725
Other religion	183	Other qualifications - level unknown	540

4. Taking Part reported PSA3 estimates on a July to July data collection period. However, for the purposes of PSA21 it has moved to an April to April collection period. Data collection began in the final quarter of the 2007/08 survey year (April 2008) using split sampling.

5. The survey measures participation by adults (aged 16 and over) living in private households in England. No geographical restriction is placed on where the activity or event occurred. For the purposes of PSA21: Indicator 6, participation in these activities must be for the purpose of recreation or leisure, including voluntary work. It excludes involvement in activities where the prime motivation is paid work or academic studies. The exceptions to this are attendance at historic environment sites which includes visits made for academic study, and sports participation which exclude volunteering, teaching, coaching and refereeing.

6. For more information about eligible cultural and sports activities, see the accompanying Technical Note.

7. The range has been calculated using a 95% confidence interval. This means there is a 95% probability the true percentage lies in the range given. All estimates have been rounded to one decimal place. An overall design factor of 1.23 has been applied to the dataset. Individual design factors have been calculated for each demographic group, ranging from 1.15 to 1.46, and for each sector, ranging from 1.25 to 1.58. Statistical significance tests have been run at the 95% level. This means the probability that the difference happened by chance is low (1 in 20).

8. The data are weighted to ensure the representativeness of the Taking Part sample. There are two types of weighting: i) to compensate for unequal probabilities of selection, and ii) to adjust for differential non-response.

9. A small number of cases in these estimates (19) are affected by a minor error measuring frequency of voluntary engagement with the historic environment and the arts in the first three quarters of the fieldwork year. The impact on the provisional baselines is less than 0.1 per cent, which is not a statistically significant difference. This error was rectified for the final quarter of the year.

10. Limiting disability is defined as those with a long-standing illness, disability or infirmity that limits their activities. Lower socio-economic is defined as those in groups 5 to 8 according to the National Statistical Socio-economic Classification (NS-SEC), see http://www.statistics.gov.uk/methods_quality/ns_sec/default.asp for more information. Black and minority ethnic is defined by cultural background. Religion is based on religious identity. Educational attainment seeks the highest level of qualification achieved. All of these are measured using the Office for National Statistics harmonised classifications, see <http://www.statistics.gov.uk/about/data/harmonisation> for more information.

11. PSA21: Indicator 6 also forms one of DCMS's Departmental Strategic Objectives (DSO1: Indicator 3). However, recreational walking and recreational cycling are excluded from the DSO definition of moderate intensity sport. When these activities are excluded, participation in moderate intensity sport on three occasions during the past week is 19.8 per cent (+/- 0.8). This has a small but not statistically significant impact on the composite indicator. For DSO1: Indicator 3, the final baseline estimate of adults who had participated in two or more different cultural or sports sectors during the past 12 months is 65.4% (+/- 1.0).

12. For more information about the Taking Part survey, including previous publications, see http://www.culture.gov.uk/reference_library/research_and_statistics/4828.aspx

13. For more information about the Department's PSA targets, see http://www.culture.gov.uk/about_us/our_priorities_and_targets/default.aspx

14. The fieldwork for the survey is being conducted by BMRB: Social Research. For more information, see <http://www.bmr.co.uk>

15. This report has been produced by Neil Wilson and Michelle Jobson. Acknowledgement goes to colleagues within the DCMS, partner NDPBs and BMRB for their assistance with the quality assurance.

16. For enquiries contact:

Department for Culture Media and Sport
2-4 Cockspur Street
London
SW1Y 5DH
enquiries@culture.gov.uk

For enquiries on this release telephone: 0207 211 6968
For general enquiries telephone: 0207 211 6200