

Bibliography

Chapter 3: The Central Dilemma

Better Regulation Task Force (2000) *Submission to the Gambling Review Body*

Rothschild Commission (July 1978) *Royal Commission on Gambling: Final Report*, Cmnd. 7200, London: Stationery Office

Chapter 4: Legislation on Gambling

Metropolitan Police (2000) *Submission to the Gambling Review Body*

Rothschild Commission (July 1978) *Royal Commission on Gambling: Final Report*, Cmnd. 7200, London: Stationery Office

Smith, C. M., & S. P. Monkcom (1987) *The Law of Betting, Gaming and Lotteries*, London: Butterworths

Chapter 5: The British Gambling Industry

Abbott, Max Wenden & Rachel Ann Volberg (2000) *Taking the Pulse on Gambling and Problem Gambling in New Zealand: A Report on Phase One of the 1999 National Prevalence Survey*, Department of Internal Affairs

Australian Institute for Gambling Research (2000) *The Australian Gambling Market – Fact Sheet*, 9 May 2000, www.fassweb.macarthur.uws.edu.au/AIGR/

Department of Internal Affairs (2001) *Gaming Reform in New Zealand – Towards a New Legislative Framework*, Wellington: Author

King J. R. B. (1997) Participation in the National Lottery, *Journal of the Royal Statistical Society Series A*, 160, 207-212 in Grun, Lucia & Paul McKeigue (2000) Prevalence of excessive gambling before and after introduction of a national lottery in the United Kingdom, *Addiction*, 95(6), 959-966

Miers, D. (1996) The implementation and effects of Great Britain's National Lottery, *Journal of Gambling Studies*, 12, 343-373 in Grun, Lucia & Paul McKeigue (2000) Prevalence of excessive gambling before and after introduction of a national lottery in the United Kingdom, *Addiction*, 95(6), 959-966

National Audit Office (2000) *Revenue from Gambling Duties*, HC 352 Session 1999-2000, London: Stationery Office

National Gambling Impact Study Commission (1999) *National Gambling Impact Study Commission Final Report*, www.ngisc.gov

National Opinion Research Center (2000) *Report to the National Gambling Impact Study Commission*, www.norc.uchicago.edu, (viewed 23/10/00)

Office of National Statistics, www.statistics.gov.uk, viewed 18th May 2001

Productivity Commission (1999) *Report of the Inquiry into Australia's Gambling Industries*, Canberra: Author, www.pc.gov.au

Sproston, K., B. Erens and J. Orford (2000) *Gambling Behaviour in Britain: Results from the British Gambling Prevalence Survey*, London: National Centre for Social Research

Chapter 6: Gaming Machines

BACTA (1997) *Amusing Britain*, Author

BACTA (2000) *Submission to the Gambling Review Body*

Bass Leisure Retail (2000) *Submission to the Gambling Review Body*

Bell Fruit Games Limited (2000) *Submission to the Gambling Review Body*

Bingo Association (2000) Oral evidence hearing with the Gambling Review Body, November 2000

BISL (2000) *The Economic Value & Public Perceptions of Gambling and the UK*, London: KPMG Consulting

BLRA (2000) *Submission to the Gambling Review Body*

BOLA (2000) *Submission to the Gambling Review Body*

British Casino Association (2000) *Submission to the Gambling Review Body*

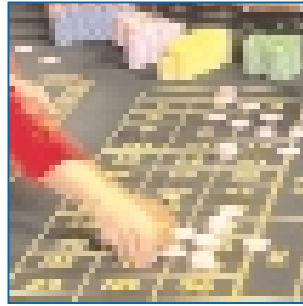
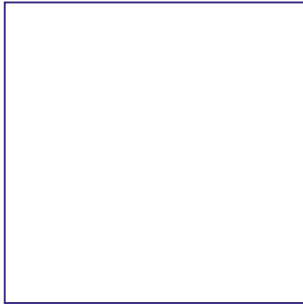
British Resorts Association, *UK Seaside Resorts – Behind the façade*, Author

Gaming Board for Great Britain (2000) *Report of the Gaming Board for Great Britain, 1999-2000*, London: Stationery Office

Kunick plc (2000) *Submission to the Gambling Review Body*

Leisure Link Group Ltd (2000) *Submission to the Gambling Review Body*

Maygay Machines Ltd (2000) *Submission to the Gambling Review Body*



Select Committee on Deregulation, Fourth Report, *Proposal for the Deregulation (Bingo and Other Gaming) Order 2001*

Sproston, K., B. Erens, J. Orford (2000) *Gambling Behaviour in Britain : Results from the British Gambling Prevalence Study*, London: National Centre for Social Research

Thomas Estates (2000) *Submission to the Gambling Review Body*

Chapter 7: Table Games

British Casino Association (2000) *Submission to the Gambling Review Body*

Fisher, Dr. S. (1996) *Gambling and Problem Gambling among Casino Patrons*, University of Plymouth

Gaming Board for Great Britain (2000) *Report of the Gaming Board for Great Britain 1999-2000*, London: Stationery Office

Green, L., S. Mehigan QC, J. Phillips & L. Stevens (2000) *Paterson's Licensing Acts 2000*, London: Butterworths

Hilton Group plc (2000) *Submission to the Gambling Review Body*

Office of National Statistics (2001) *Attitudes to gambling in Great Britain*, January 2001, London: Author

Rothschild Commission (1978) *Royal Commission on Gambling – Final Report*, Cmnd. 7200, London: Stationery Office

Smith, C. M. & S. P. Monkcom (1987) *The Law of Betting, Gaming & Lotteries*, London: Butterworths

Sproston, K., B. Erens & J. Orford (2000) *Gambling Behaviour in Britain : Results from the British Gambling Prevalence Study*, London: National Centre for Social Research

Chapter 8: Bingo

Bingo Association (1) (2000) Oral evidence to the Gambling Review Body, November 2000

Bingo Association (2) (2000) *Submission to the Gambling Review Body*

Gala Leisure (2000) *Submission to the Gambling Review Body*

Gaming Board for Great Britain (2000) *Report of the Gaming Board for Great Britain 1999-2000*, London: Stationery Office

Gaming Board website, www.gbgb.org.uk, viewed 8 May 2001

Home Office website, www.homeoffice.gov.uk, viewed 8 May 2001

Office of National Statistics (2001) *Attitudes to gambling in Great Britain*, January 2001, London: Author

Rank Group (2000) *Submission to the Gambling Review Body*

Smith, C. M. & S. P. Monkcom (1987) *The Law of Betting, Gaming & Lotteries*, London: Butterworths

Sproston, K., B. Erens & J. Orford (2000) *Gambling Behaviour in Britain : Results from the British Gambling Prevalence Study*, London: National Centre for Social Research

Chapter 9: Betting

Arthur Andersen (2000) *Report of our findings from our review of the starting price system*, London: Arthur Andersen

BBOA (2000) *Submission to the Gambling Review Body*

BGRB (2000) *Submission to the Gambling Review Body*

BGRF Limited (1999) *1999 Annual Report*, Author

BISL (2000) *The Economic Value & Public Perceptions of Gambling and the UK*, London: KPMG Consulting

BOLA (2000) *Submission to the Gambling Review Body*

British Horseracing Board (1) (2000) *1999 Report*, London: Author

British Horseracing Board (2) (2000) *Submission to the Gambling Review Body*

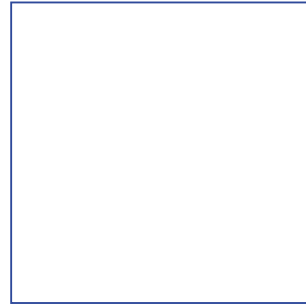
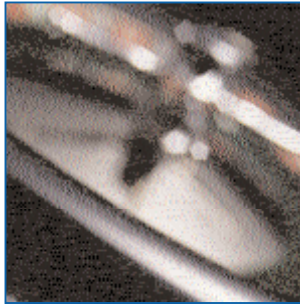
British Horseracing Board website, www.bhb.co.uk, viewed on 3 April 2001

Customs & Excise (7/3/01) *Budget 2001 – PN 602*

Europe Economics (2000) *An Assessment of the Options for Modernising Betting Taxation : Final Report*, Author

Financial Services Authority (2000) *Submission to the Gambling Review Body*

Green, L., S. Mehigan QC, J. Phillips & L. Stevens, (1999) *Paterson's Licensing Acts 2000*, London: Butterworths



HBLB (2000) *Submission to the Gambling Review Body*

HBLB (1999) *Annual Report 1998-1999*, London: Author

HBLB (2000) *Annual Report 1999-2000*, London: Author

Home Office (2000) *A Consultation Paper on the Proposed Abolition of the Horseracing Betting Levy Board and the Licensing of Racecourse Betting and Pool Betting on Horseracing*, London: Author

Home Office website, www.homeoffice.gov.uk, viewed 5 April 2001

IBAS (1) (2000) *IBAS Report, Number 2*, Nov 1998 – Nov 2000, Author

IBAS (2) (2000) Oral Evidence to the Gambling Review Body, December 2000

IBAS (3) (2000) *Submission to the Gambling Review Body*

IG Index (2000) *Submission to the Gambling Review Body*

IG Index (1) (2001) Stock Exchange announcement, www.igindex.co.uk, viewed on 26 April 2001

IG Index (2) (2001) Three Year Summary figures, www.igindex.co.uk, viewed on 26 April 2001

Jockey Club (2000) *Submission to the Gambling Review Body*

Monopolies and Mergers Commission (1998) *Ladbroke Group PLC and the Coral betting business : A report on the merger situation*, Cm 4030, London: Stationery Office

NAB (2000) *Submission to the Gambling Review Body*

NJPC (2000) *Submission to the Gambling Review Body*

Observer (29/4/01) 'Betting shops are 40 years old this week and bear no resemblance to the dives of 1961. There are more changes to come', Graham Rock in the *Observer*

Paton, Dr D., Professor D. Siegel & Dr L. Vaughan Williams (2000) *An Economic Analysis of the Options for Taxing Betting*, commissioned by HM Customs & Excise, available at www.hmce.gov.uk

Racing Post (20/3/2001), 'Annual Tote Figures', *Racing Post*, 54

Racing Post (30/3/01) 'Why Tatts bookies are in pole position', *Racing Post*, 6

Rothschild Commission (1978) *Royal Commission on Gambling – Final Report*, Cmnd. 7200, London: Stationery Office

Smith, A., R. Allen & D. Moraes (2000) Betting Licensing, Great Britain, June 1999-May 2000, *Home Office Statistical Bulletin*, 25/00

Smith, C. M. & S. P. Monkcom (1987) *The Law of Betting, Gaming & Lotteries*, London: Butterworths

Sproston, K., B. Erens & J. Orford (2000) *Gambling Behaviour in Britain : Results from the British Gambling Prevalence Study*, London: National Centre for Social Research

Chapter 10: Lotteries

Camelot website (1) Fast facts page : 7, www.camelotplc.com, 26 February 2001

Camelot website (2) *National Lottery : The Games*, www.camelotplc.com, 28 February 2001

Creigh-Tyte, Stephen (1997) Building a National Lottery: Reviewing British Experience, *Journal of Gambling Studies* Vol 13 (4) : 322

Department for Culture, Media and Sport – Economics Branch (2000) *The National Lottery : The Wider Gambling Context*

Gaming Board for Great Britain (1991) *Report of the Gaming Board for Great Britain 1990-91*, London: Stationery Office

Gaming Board for Great Britain (1999) *Report of the Gaming Board for Great Britain 1998-99*, London: Stationery Office

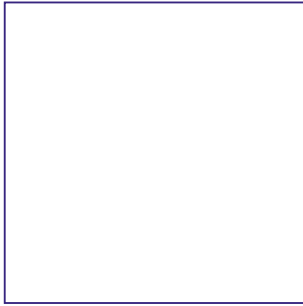
Gaming Board for Great Britain (2000) *Report of the Gaming Board for Great Britain 1999-2000*, London: Stationery Office

Henley Centre report (1996) *The Impact of the National Lottery on UK Job Creation* quoted in Camelot (2000) *Submission to the Gambling Review Body*

Lotteries Council (2000) Evidence to the Gambling Review Body

National Audit Office (2000) *Revenue from Gambling Duties*, HC 352 Session 1999-2000, London: Stationery Office

National Lottery Commission (1999) *Social Research Programme Report No 1 : 3-4*



National Lottery Commission (1) website, *Information Note 6 : Retailers and the National Lottery*, www.natlotcomm.gov.uk, 19 February 2001

National Lottery Commission (2) website *Information Note 9 : Facts and figures*, www.natlotcomm.gov.uk, 19 February 2001

Sproston, K., B. Erens & J. Orford (2000) *Gambling Behaviour in Britain : Results from the British Gambling Prevalence Study*, London: National Centre for Social Research

Chapter 11: Pool Competitions

BISL (2000) *The Economic Value & Public Perceptions of Gambling and the UK*, London: KPMG Consulting

Littlewoods Organisation plc (1999) *Report and Financial Statements 1999*, Liverpool: Author

Littlewoods Leisure (2000) *Submission to the Gambling Review Body*

Lowe, Jonquil & Terry Clark (1999) *The Which? Guide to Gambling*, London: Which? Consumer Guides

Pools Promoters' Association (2000) *Submission to the Gambling Review Body*

Rothschild Commission (1978) *Royal Commission on Gambling – Final Report*, Cmnd. 7200, London: Stationery Office

Smith, C. M. & S. P. Monkcom (1987) *The Law of Betting, Gaming & Lotteries*, London: Butterworths

Sproston, K., B. Erens & J. Orford (2000) *Gambling Behaviour in Britain : Results from the British Gambling Prevalence Study*, London: National Centre for Social Research

Chapter 12: On-Line Gambling

Broadband Media (9 April 2001) 'Sector Profile – Broadband Gambling', *Broadband Media*, 9 April 2001

Christiansen Capital Advisors LLC (2000) *Submission to the Gambling Review Body*

Europe Economics (2000) *An Assessment of the options for modernising betting taxation : Final Report for the Bookmakers Committee*, Author.

Gaming Board for Great Britain (2000) *Report of the Gaming Board for Great Britain 1999-2000*, London: Stationery Office

Kelly, Joseph M (2000) Internet Gambling Law, *William Mitchell Law Review*, Vol 26, No 1, p.117-177

Merril Lynch (2001), 'Women fuel the fever for a flutter', reported in the *Express* newspaper, 4 June 2001

Mobile Communications, 20 March 2001, Informa Telecoms Group

National Gambling Impact Study Commission (1999) *National Gambling Impact Study Commission Final Report*, www.ngisc.gov

National Office for the Information Economy (2001) *Report of the investigation into the feasibility and consequences of banning interactive gambling*, www.noie.gov.au

Oftel (2001) *Management Plan 2001/02*, www.oftel.gov.uk

Racing Post (13 April 2001) 'Net Prophet', *Racing Post*, 12

Retail E-Commerce Task Force (2000) *Clicks & Mortar : The New Store Fronts*, London: DTI

Sproston, K., B. Erens & J. Orford (2000) *Gambling Behaviour in Britain : Results from the British Gambling Prevalence Study*, London: National Centre for Social Research

Senate Select Committee on Information Technologies (2000) *Netbets : A Review of on-line gambling in Australia, Commonwealth of Australia*, www.aph.gov.au/senate/committee/it_ctte/

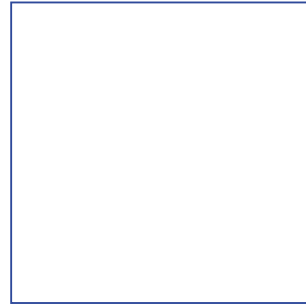
Sutherland, J. (16 April 2001) 'Forget pornography and hackers – gambling is the real danger on the net', in the *Guardian* newspaper

Chapter 13: Relationship with the Underlying Activities

BGRB (2000) Oral evidence to the Gambling Review Body, November 2000

Littlewoods Organisation plc (1999) *Report and Financial Statements 1999*, Liverpool: Author

Rothschild Commission (1978) *Royal Commission on Gambling – Final Report*, Cmnd. 7200, London: Stationery Office



Chapter 14: Attitudes to Gambling

BACTA & BALPPA (2000) *The Importance of amusement arcades to the economic well being and sustainability of seaside towns*, Authors

BISL (2000) *The Economic Value & Public Perceptions of Gambling and the UK*, London: KPMG Consulting

British Horseracing Board (2000) *Submission to the Gambling Review Body*

Fisher, Dr S. (2000) *Submission to the Gambling Review Body*

Office of National Statistics (2000) *General Household Survey 2000*, London: Author

Private individual (2000) *Submission to the Gambling Review Body*

Productivity Commission (1999) *Inquiry into Australia's Gambling Industries*, Canberra: Author, www.pc.gov.au/inquiry/gambling/

Rothschild Commission (1978) *Royal Commission on Gambling – Final Report*, Cmnd. 7200, London: Stationery Office

Sproston, K., B. Erens & J. Orford (2000) *Gambling Behaviour in Britain : Results from the British Gambling Prevalence Study*, London: National Centre for Social Research

Test Research (2000) *Changes to Bingo Regulations – The Views of the Public and Bingo Players*, A Study conducted for the Bingo Association, October 2000

Union of Muslim Organisations of UK & Eire (2000) *Submission to the Gambling Review Body*

Volberg Dr. R. & S. Sinclair (2000) *Submission to the Gambling Review Body* (Cristiansen Capital Advisers, LLC & Germini Research Ltd)

Walker R. (1993) *Controlling Fruit Machines – A survey*, July 1993

Chapter 15: Keeping Crime Out of Gambling

Gaming Board for Great Britain (2000) *Submission to the Gambling Review Body*

Chapter 16: Fairness to the Punter

Arena Leisure plc (2000) *Submission to the Gambling Review Body*

Arthur Andersen (2000) *Report of our findings from our review of the starting price system*, Author

BCA (2000) *Submission to the Gambling Review Body*

Collins, Professor P (2000) *Submission to the Gambling Review Body*, Centre for Study of Gambling & Commercial Gaming, University of Salford

Gaming Board for Great Britain (2000) *Report of the Gaming Board for Great Britain 1999-2000*, London: Stationery Office

HBLB (2000) *Submission to the Gambling Review Body*

Home Office (2000) *Consultation paper on the proposed abolition of the Horserace Betting Levy Board and the licensing of racecourse betting and pool betting on horseracing*, November 2000

Monopolies and Mergers Commission (1998) *Ladbroke Group PLC and the Coral betting business : A report on the merger situation*, Cm 4030, London: Stationery Office

Monopolies and Mergers Commission (1989) *Grand Metropolitan plc and William Hill Organisation Limited : A Report on the merger situation*, Cm 776, London: Stationery Office

National Lottery Commission, www.natlottcomm.org.uk, viewed 19 February 2001

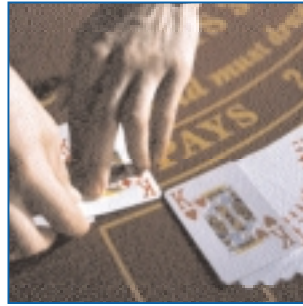
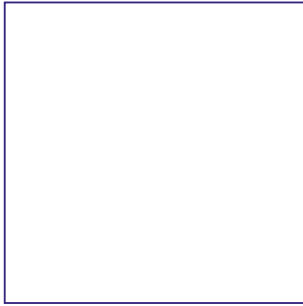
Chapter 17 : Protecting the Vulnerable

Abbott M.W., Sullivan S., & McAvoy B., (1994) *The Compulsive Gambling Society of New Zealand National Telephone hotline and Clinics: Report on their first year of operation*. Auckland: Compulsive Gambling Society of New Zealand Cited in the New Zealand Gaming Survey

Abbott M.W., & Volberg R.A., (1992) *Frequent gamblers and problem gamblers in New Zealand*, Research series number 14, Wellington: Department of Internal Affairs

Abbott M.W., & Volberg R.A. (1999) *Gambling and Problem Gambling in the Community: An International Overview and Critique*. (Volume 1 of the New Zealand Gaming Survey) Wellington: Department of Internal Affairs

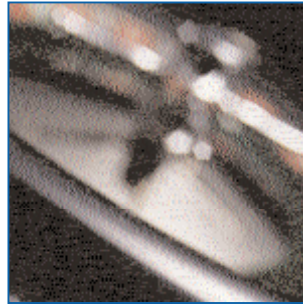
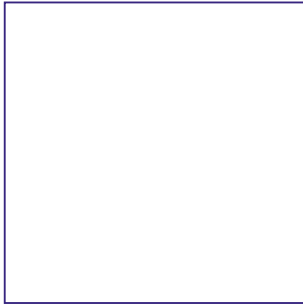
Adams H.B. (1988) Studies in REST:III. REST, Arousability, and the nature of alcohol and substance abuse. *Journal of Substance Abuse Treatment* Vol 5 (2) 77-81



- Baron E. and Dickerson M. Alcohol consumption and self-control of Gambling Behaviour, *Journal of Gambling Studies* 2000 Vol 15 pp3-15
- BBOA (2000) *Submission to the Gambling Review Body*
- Bellringer P. (1999) *Understanding Problem Gamblers*, London: Free Association Books
- Blaszczynski A., Steel Z., McConaghy N. (1997) Impulsivity in pathological gambling. The antisocial impulsivist, *Addiction*, Vol 92 (1) 75-87
- Blaszczynski A. (1999) Pathological gambling and obsessive-compulsive spectrum disorders. *Psychological Reports*, Vol 84(1) 107-113
- Blaszczynski A. P. (2000) Pathways to Pathological Gambling: Identifying Typologies E-Gambling; *The Electronic Journal of Gambling*, Issue 1, (March 2000) www.camh.net/egambling
- Bulkeley W. M. (1992) Video betting, called Crack of Gambling, is spreading, *Wall Street Journal*, (July 14 1992)
- Business in Sport & Leisure (2000) *The Economic Value and Public Perceptions of Gambling in the UK*, London: KPMG
- Collins, P (2001) *Submission to the Gambling Review Body* (supplementary), University of Salford
- Commings D. E., Gade R., Wu S., Chieu C., Dietz G., Muhllemann D., Saucier G., Ferry L., Rosenthal R. J., Lesieur H. R., Rugie L. J., and MacMurray P., (1997) Studies of the potential role of the dopamine D1 receptor gene in addictive behaviours, *Molecular Psychiatry* Vol 2 pp44-56)
- Crockford D. N., and el-Guebaly N. (1998) Psychiatric comorbidity in pathological gambling: A critical review, *Canadian Journal of Psychiatry* 43: 43-50
- De Caria C. M., Bergaz T., & Hollander E. 1998 Serotnergic and Noradrnergic Function in Pathological Gambling, *CNS Spectrums*, Vol 3 No 6
- Dickerson, M. (1989) Gambling: A dependence without a drug, *International Review of Psychiatry*, 1 (1-2):157-171
- Dickerson M., Hinchy J., and England S. I. (1990) Minimal treatments and problem gamblers: A preliminary investigation, *Journal of Gambling Studies*, 6:87-102
- Dickerson M., McMillen J., Hallebone E., Volberg R., and Woolley R. (1997) *Definition and incidence of problem gambling, including the socio-economic distribution of gamblers*, Melbourne: Victorian Casino and Gaming Authority
- Elster Jon (1999) 'Gambling and Addiction' in *Getting Hooked*. Jon Elster and Ole-Jorgen Skog, Cambridge: University Press
- Emerson M. O., & Laudergeran J. C. (1996) Gambling and problem gambling among adult Minnesotans: Changes 1990-1994, *Journal of Gambling Studies*, 12, 291-304
- Fisher S. (1996) *Gambling and Problem Gambling Among Casino Patrons*,
- Fisher S. (1998) *Gambling and problem gambling among young people in England and Wales*. Report to the Office of the National Lottery.
- Fisher S. E. & Griffiths M. (1995) Current Trends in Slot Machine Gambling: Research and Policy issues. Special issue: Slot Machine Gambling, *Journal of Gambling Studies*, 11(3): 239-249 Cited in the National Research Council's Report on Pathological Gambling page 255
- GamCare (2000) Oral evidence to the Gambling Review Body, November 2000
- Gerstein, D. R., Volberg R. A., Harwood R., Christiansen E. M. et al (1999) *Gambling Impact and Behavior Study: Report to the National Gambling Impact Study Commission*. Chicago IL: National Opinion Research Center at the University of Chicago
- Giacopassi D., Stitt B., and Vandiver M. (1998) An Analysis of the Relationship of Alcohol to Casino Gambling among College Students: *Journal of Gambling Studies* Vol 14 pp135-149
- Griffiths M. (1995) *Clinical Psychology Forum* Vol 76 pp14-19
- Griffiths M. (1997) The National Lottery and Scratchcards, *The Psychologist*, January pp23-26
- Griffiths M. (1999) Gambling Technologies: Prospects for Problem Gambling, *Journal of Gambling Studies*, Vol 15(3)
- Griffiths M., and Wood R. T. A. Risk Factors in Adolescence: The case of gambling, video-game playing and the internet, *Journal of Gambling Studies* forthcoming



- Gupta R. & Deverensky J.L. (1998) An examination of the correlates associated with excessive gambling among adolescents. Paper presented at the annual meeting of the National Council on Compulsive Gambling, Las Vegas, NV
- Hickey J.E. & C.A. Haerten (1986) Simulation of gambling responses on the Addiction Research Center. *Inventory Addictive Behaviour* 11. 345-349
- Jacobs D.F. (1989) 'Illegal and undocumented: a review of teenage gambling and the plight of children of problem gamblers in America', in *Compulsive Gambling Theory, Research and Practice*, Shaffer H.J., Stein S.A. Gambino B. & Cummings T.N. (eds) Boston: Lexington Books.
- Kyndon A., and M.G. Dickerson (1998) An experimental study of the effects of prior consumption of alcohol on a simulated gaming activity. Paper submitted for publication.
- Leary K. & M.G. Dickerson (1985) Levels of arousal in high and low frequency gamblers. *Behaviour Research and Therapy*, 23, 635-640
- Lefevre R. (1990) Compulsive Gambling and addictions – Implications for treatment. Paper presented at the Eighth International Conference on Risk and Gambling, London, August 1990. Cited in M.Walker 1992, *The Psychology of Gambling*.
- Lesieur H.R. (1984) *The Chase: The Compulsive Gambler*, Rochester V.T.: Schenkman Books
- Lesieur H.R., S.B. Blume and R. Zoppa (1986) Alcoholism, drug abuse and gambling. *Alcoholism: Clinical and Experimental Research*, 10:33-38
- Maden T., M. Swinton, and J. Gunn (1992) Gambling in Young Offenders, *Criminal Behaviour and Mental Health* 2, pp300-308
- National Research Council (1999) *Pathological Gambling a Critical Review*, Published by the National Academy Press
- Neal, Mark. (1998) 'You Lucky Punters: A study of Gambling in Betting Shops' *Sociology* 32 pp581-600
- Orford, Professor J. (2000) Oral evidence to the Gambling Review Body, November 2000
- Orford J., S. Dalston et al. (1998) *The Birmingham Untreated Heavy Drinkers Project: Report on Wave 1*, 1998, Report to the Department of Health
- Polzin P.E., Baldrige J., Doyle D., Sylvester J.T., Volberg R.A., and Morre W.L. (1998) *From convenience stores to casinos: Gambling – Montana style*, Montana Business Quarterly 36 (4) 2.14
- Productivity Commission (1999) *Inquiry into Australia's Gambling Industries*, Canberra: Author, www.pc.gov.au/inquiry/gambling/
- Ricketts T., Bliss P., MacDonald H. and Rayner C. (2000) *The Extent of Gambling Among Offenders on Probation*, Community Health Sheffield NHS Trust
- Rönnenberg S., Volberg R.A., Abbott M.W., Moore W.L., Andrén A., Munck J., Jonsson J., Nilsson T. & Svensson O. (1999) *Gambling and Problem Gambling in Sweden*, Report No 2 of the National Institute of Public Health Series on Gambling, Stockholm National Institute of Public Health
- Shaffer H.J., Hall M.N., Bilt J.V. (1997) *Estimating the Prevalence of Disordered Gambling Behavior in the Untied States and Canada: A Meta-analysis*, Boston MA Published by the Harvard Medical School Division on Addiction
- Smart R. G. and Ferris J. (1996) Alcohol, drugs and gambling in the Ontario adult population, *Canadian Journal of Psychiatry*, 41: 36-45
- Specker S.M., Carlson G.A., Edmonson K.M., Johnson P.E. & Marcotte M. (1996) Psychopathology in Problem Gamblers seeking treatment. *Journal of Gambling Studies*, 12 p67-81
- Sproston K., B. Erens & J. Orford (2000) *Gambling Behaviour in Britain: Results from the British Gambling Prevalence Survey*, London: National Centre for Social Research
- Spunt B., Lesieur H., Hunt D., and Cahill L. (1995) Gambling among methadone patients, *International Journal of the Addictions*, 30: 929-962
- Thompson W.N., Gazel R. & Rickman D. (1997) The social costs of gambling in Wisconsin, *Gaming Law Review*, No 1 Vol 1
- Toneatto T. (1999) Cognitive psychopathology of problem gambling, *Substance use and misuse* 34 (11) 1593-1604
- Vitaro F., Arseneault L., & Tremblay R.E. (1997) Dispositional predictors of problem gambling in male adolescents, *American Journal of Psychiatry*, 154 (12) 1769-1770



Volberg R. (1995) *Gambling and Problem Gambling in Iowa: A Replication Survey*, A report to the Iowa Department of Human Services

Volberg R. (1996) Prevalence Studies of Problem Gambling in the US, *Journal of Gambling Studies*, 12: p111-128

Volberg R. (1997) *Gambling and Problem Gambling in Oregon*, Report to the Oregon Gambling Addiction Treatment Foundation.

Volberg R. (2000) The future of gambling in the UK, *British Medical Journal*, 320: 1556. Cited in the British Gambling Prevalence Survey Follow-up Qualitative Study 2001

Volberg R. (2001) *Changes in Gambling and Problem Gambling in Oregon: Results from a Replication Study 1997-2000*, Salem: Oregon Gambling Foundation

Volberg, Dr R. & Sebastian Sinclair (2000) *Submission to the Gambling Review Body*, (Christiansen Capital Advisers, LLC & Gemini Research Ltd)

Volberg R.A. & R. M. Stuefen (1994) *Gambling and Problem Gambling in south Dakota: A follow-up survey*, A report to Citizens Uniting for Gambling Reform

Walker Douglas M. and A. H. Barnett (2000) The Social costs of gambling: An Economic Perspective, *Journal of Gambling Studies*, 15, 3 pp181-215

Walker, R. (1993) *Controlling Fruit Machines – a Survey*

Chapter 18: Regulation Introduction

Better Regulation Task Force (2000) *Submission to the Gambling Review Body*

Betting Office Licensees Association (2000) *Submission to the Gambling Review Body*

Home Office (2000) *Time for Reform: Proposals for the Modernisation of our Licensing Laws*, Cm 4696, London: Stationery Office

Horserace Betting Levy Board (2000) *Submission to the Gambling Review Body*

Chapter 19: Licensing of Individuals and Corporate Bodies

Gaming Board for Great Britain (1999) *Report of the Gaming Board for Great Britain 1998-99*, London: Stationery Office

Gaming Board for Great Britain (2000) *Report of the Gaming Board for Great Britain 1999-00*, London: Stationery Office

Home Office (1999) Circular no. 29/1999, 15 June 1999

Home Office (2000) *Consultation paper on the proposed abolition of the Horserace Betting Levy Board and the licensing of racecourse betting and pool betting on horseracing*, November 2000

Horserace Betting Levy Board (2000) *Submission to the Gambling Review Body*

National Audit Office (2000) *The Gaming Board: Better Regulation*, HC 537 Session 1999-2000, London: Stationery Office

Chapter 20: Licensing of Premises: General Issues

Better Regulation Task Force (2000) *Submission to the Gambling Review Body*

Bingo Association (2000) *Submission to the Gambling Review Body*

British Casino Association (2000) *Submission to the Gambling Review Body*

Gaming Board for Great Britain (2000) *Submission to the Gambling Review Body*

Home Office (1996) *Casinos and Bingo Clubs: A Consultation Paper*, February 1996

Ritz Club (2000) *Submission to the Gambling Review Body*

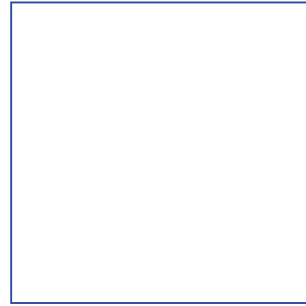
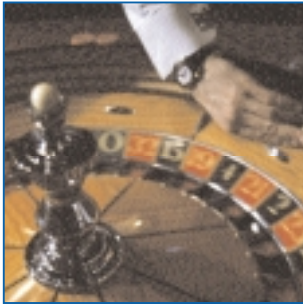
Chapter 21: Licensing of Premises, Role of the Local Authority

Home Office (2000) *Time for Reform: Proposals for the Modernisation of our Licensing Laws*, Cm 4696, London: Stationery Office

Home Office (2nd May 2001) 'Home Office announces it is 'time for reform' of licensing laws', www.homeoffice.gov.uk

Chapter 22: Gambling Activities: Common Issues

Advertising Standards Authority (2000) *Submission to the Gambling Review Body*



Charles River Associates Ltd (2001) *An Economic Impact Study on the Liberalisation of Sports Betting into Pubs*, commissioned by the British Horseracing Board

Independent Television Commission (2000) *Submission to the Gambling Review Body*

Chapter 23: Gaming Machines

Betting Office Licensees Association Limited (2000) *Submission to the Gambling Review Body*

Casino International magazine, March 2001

Home Office (March 2001) *Gaming Machines: Methods of payment. A consultation paper*

Office of National Statistics (2001) *Attitudes to gambling in Great Britain*, January 2001

National Audit Office (2000) *Revenue from Gambling Duties*, HC 352, Session 1999-2000, London: Stationery Office

Chapter 24: Casinos

Ladbroke Betting and Gaming (2000) *Submission to the Gambling Review Body*

Chapter 25: Bingo

Bingo Association (2000) Oral evidence to the Gambling Review Body, November 2000

Business in Sport & Leisure (2000) *The Economic Value & Public Perceptions of Gambling and the UK*, KPMG Consulting

Chapter 26: Betting

Arthur Andersen (2000) *Report of our findings from our review of the starting price system*, London: Arthur Andersen

BISL (2000) *The Economic Value & Public Perceptions of Gambling and the UK*, London: KPMG Consulting

Jockey Club (2000) *Submission to the Gambling Review Body*

Miers, Professor D. (2000) *Submission to the Gambling Review Body*

Chapter 27: Spread Betting

Financial Services Authority (2000) *Submission to the Gambling Review Body*

Chapter 28: Lotteries

Associated Newspapers (2000) *Submission to the Gambling Review Body*

Home Office: (7 January 1998) *The Lotteries and Amusements Act 1976 - Draft Bill to restrict the frequency of on-line lottery draws.*"

Littlewoods Leisure (2000) *Submission to the Gambling Review Body*

Metropolitan Police (2000) *Submission to the Gambling Review Body*

Rothschild Commission (July 1978) *Royal Commission on Gambling: Final Report*, Cmnd. 7200, London: Stationery Office, para 12.135

Select Committee on Culture, Media and Sport (2001) *First Report*, March 2001

Woodland Trust (2000) *Submission to Gambling Review Body*

Chapter 29: Pool Competitions

Littlewoods Leisure (2000) *Submission to the Gambling Review Body*

Chapter 30: On-Line Gambling

Casino International (1) (April 2001) *Antigua to regulate Internet betting*, *Casino International*, 4

Casino International (2) (April 2001) *Big US resorts looking to regulate internet casinos*, *Casino International*, 6

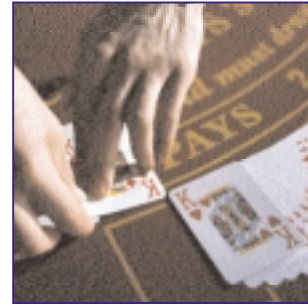
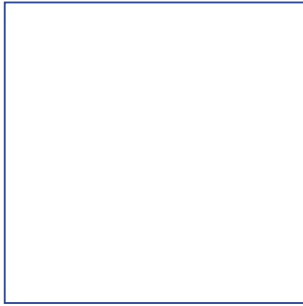
Kelly, Joseph M (2000) *Internet Gambling Law*, *William Mitchell Law Review*, Vol 26, No 1, 117-177

National Gambling Impact Study Commission (1999) *National Gambling Impact Study Commission Final Report*, www.ngisc.gov, viewed 3 April 2000

National Office for the Information Economy (1), viewed 30 March 2001, www.noie.gov.au

National Office for the Information Economy (2) (2001) *Report of the investigation into the feasibility and consequences of banning interactive gambling*, www.noie.gov.au

Sutherland, J. (2001) 'Forget pornography and hackers – gambling is the real danger on the net', in the *Guardian* newspaper, 16 April 2001



Chapter 31: Clubs

Gaming Board for Great Britain (2001) Letter, January 2001

Smith, C. M., & S. P. Monkcom (1987) *The Law of Betting, Gaming and Lotteries*, London: Butterworths

WMCIU (2000) *Submission to the Gambling Review Body*

Chapter 32 : Researching, Limiting and Treating Problem Gambling

Department of Health (2001) www.drugs.gov.uk/research.htm, viewed May 2001

Department of Internal Affairs (2001) *Gaming Reform in New Zealand – Towards a New Legislative Framework*, Wellington: Author

Collins, P. (2000 & 2001) *Submission to the Gambling Review Body*, and supplementary evidence, University of Salford

Griffiths M. (forthcoming) *Gambling Market and Supporting Services for Problem Gambling in the United Kingdom*

Griffiths M. & H. F. MacDonald (1999) Counselling in the treatment of pathological gambling: an overview. *British Journal of Guidance and Counselling* Vol 27(2)

National Research Council (1999) *Pathological Gambling : a Critical Review*, National Academy Press

Oakley-Brown M.A., P. Adams & P.M. Mobberly (2000) Interventions for pathological gambling (Cochrane Review) *The Cochrane Library*, Issue 2 2001. Cited in *The extent of gambling among offenders on probation*, (November 2000) Community Health Sheffield NHS Trust

Orford, Professor J. (2000) Oral evidence to the Gambling Review Body, November 2000

Productivity Commission (1999) *Report of the Inquiry into Australia's Gambling Industries*, Canberra: Author, www.pc.gov.au

Ricketts, T. (2000) *Submission to the Gambling Review Body*

Rönneberg S., R. Volberg, M.W. Abbott, W.L. Moore, A. Andrén, J. Munck, J. Jonsson, T. Nilsson & O. Svensson (1999) *Gambling and Problem Gambling in Sweden*, Report No 2 of the National Institute of Public Health Series on Gambling. Stockholm National Institute of Public Health

Shaffer H.J., M. N. Hall & J.V. Bilt (1997) Estimating the

prevalence of Disordered Gambling Behavior in the United States and Canada: A Meta-analysis of Disordered Gambling in the US and Canada. *The Wager* published by the Harvard Medical School Division on Addictions

Stewart and Brown (1998) An outcome study of Gamblers Anonymous, *British Journal of Psychiatry* Vol 152

HM Treasury (2001) *Spending Review 2000*, www.hm-treasury.gov.uk/sr2000/report/chap29html, viewed May 2001

Chapter 33 : Gambling Commission: Powers and Functions

Home Office (2000) *A Consultation Paper on the Proposed Abolition of the Horseracing Betting Levy Board and the Licensing of Racecourse Betting and Pool Betting on Horseracing*, London: Author

National Audit Office (2000) *The Gaming Board : Better Regulation*, HC 352 Session 1999-2000, London: Stationery Office

Chapter 34: Funding the Gambling Commission and its Likely Workload

Gaming Board for Great Britain (2000) *Report of the Gaming Board for Great Britain 1999/2000*, London: Stationery Office

National Audit Office (2000) *The Gaming Board : Better Regulation*, HC 352 Session 1999-2000, London: Stationery Office

HM Treasury (2000) *Government Accounting 2000 : A Guide to Accounting and Financial Procedures for the use of Government Departments*, London: Stationery Office

Chapter 35: Implications for the National Lottery

Office of National Statistics (2001) *Attitudes to gambling in Great Britain*, January 2001

Sproston, K., B. Erens and J. Orford (2000) *Gambling Behaviour in Britain : Results from the British Gambling Prevalence Survey*, London: National Centre for Social Research

Chapter 36: The Business Environment

HM Customs & Excise (7 March 2001) *Budget 2001 – PN 602*

National Audit Office (2000) *Revenue from Gambling Duties*, HC 352 Session 1999-2000, London: Stationery Office

