

*(Above)* Plate I

Case 25: Two Late Bronze Age gold hair rings, c.1100–750 BC (Courtesy of the Visitors of the Ashmolean Museum)

*(Below)* Plate II

Case 10: A manuscript treatise of 1530 by Giacomo Calco, addressed and presented to Henry VIII

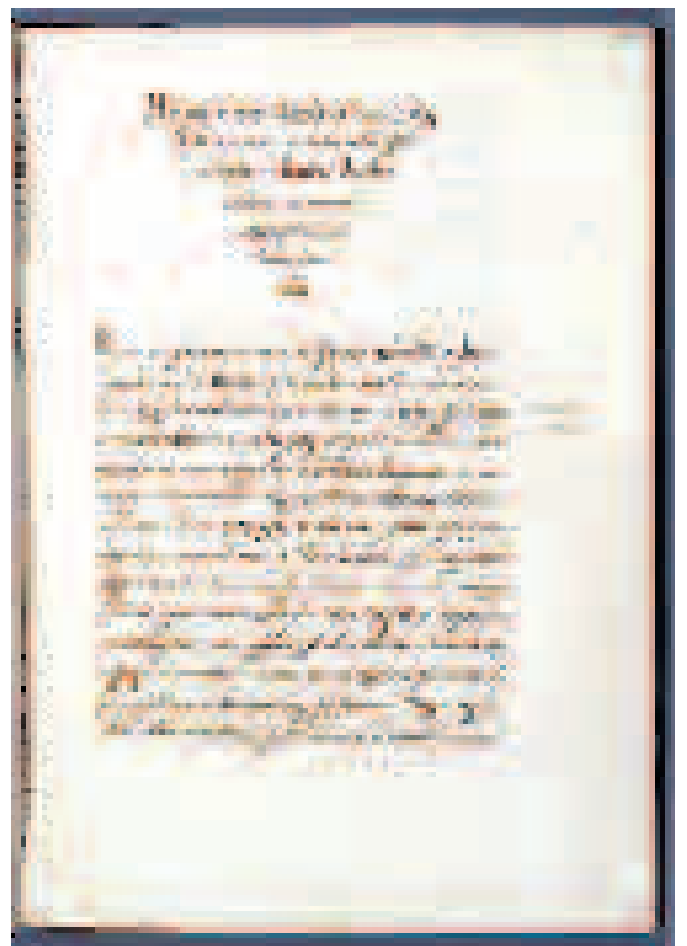




Plate III  
Case 32: A fifteenth-century Middle English physician's handbook



Plate IV

Case 4: A drawing, *The Risen Christ*, by Michelangelo Buonarroti (1475–1564)

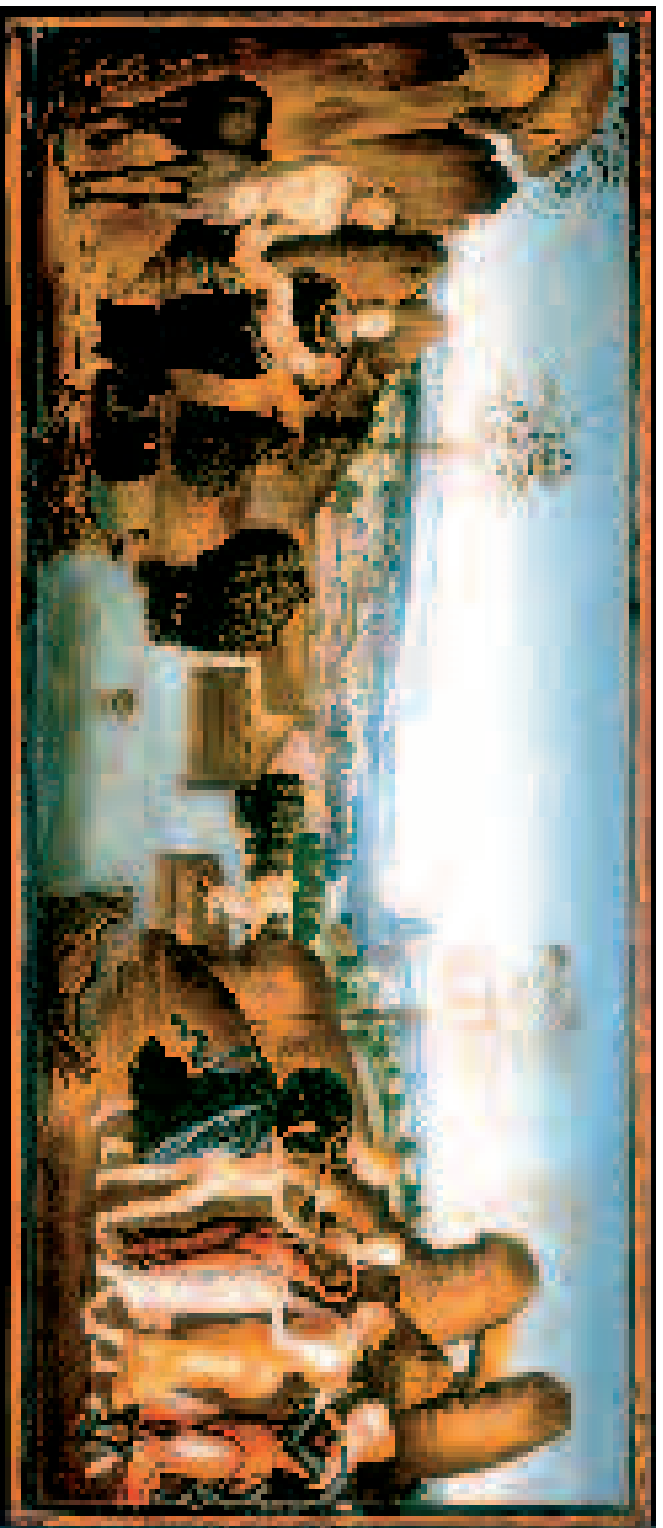


Plate V  
Case 34: A pair of Italian fifteenth-century *spalliera* panels showing scenes from the life of Achilles



Plate VI

Case 6: *A Travelling Companion*, a double-sided *Portrait of a Woman*, attributed to Vincenzo Catena (c.1480–1531) (above) and *Portrait of a Boy*, attributed to Zorzi da Castelfranco, called Giorgione (c.1477–1510) (below)



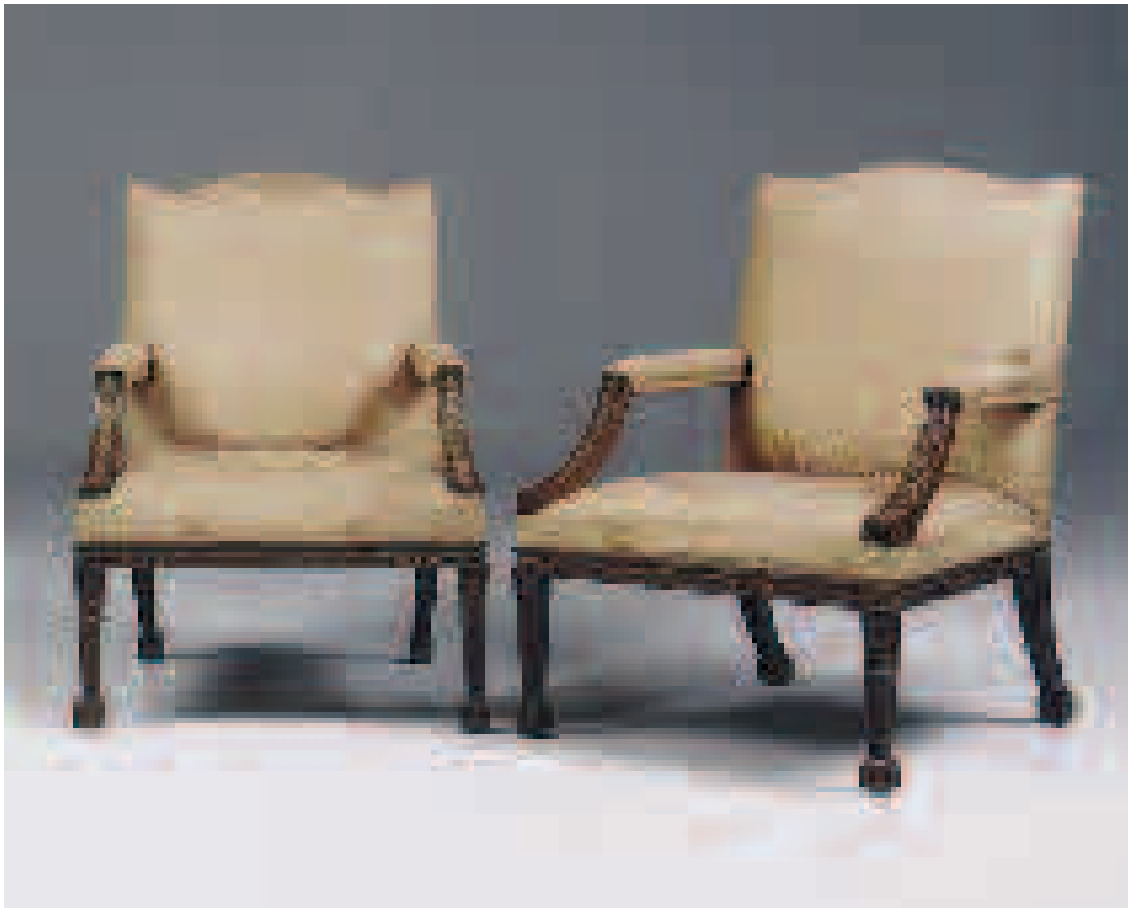
*(Above)* Plate VII

Case 7: A pair of George I walnut and marquetry side chairs, possibly by John Belchier

*(Below)* Plate VIII

Case 28: One of a pair of George II walnut upholstered side chairs by William Hallett, photographed after 1922 (Courtesy of Leeds Museums and Galleries (Temple Newsam))





*(Above)* Plate IX

Case 8: Two chairs from a group of four George III mahogany and pear wood library open armchairs, from Hagley Hall

*(Below)* Plate X

Case 27: One of a pair of George III mahogany side tables from Hagley Hall





Plate XI

Case 9: A drawing, *Study for the Institution of the Eucharist*, by Federico Barocci (1528/35–1612)



Plate XII  
Case 26: *A Portrait of Sir Joseph Banks with Omai and Doctor Solander* by William Parry (1742–91)



Plate XIII

Case 5: A pair of George III carved stone sphinxes, after cleaning (Courtesy of Birmingham Museums and Art Gallery)



*(Above)*

Plate XIV

Case 2: A bronze and ormolu hanging light by James Deville (1776–1846), from Gawthorpe Hall

*(Below)*

Plate XV

Case 33: A spring-driven astronomical table clock by Thomas Barry and James Moorcroft of Ormskirk, 1787





Plate XVI

Case 1: A watercolour, *Near Beddgelert (A Grand View of Snowdon)*, by Thomas Girtin, c.1799



*(Above)*

Plate XVII

Case 29: An emerald and diamond tiara by Bapst of Paris, 1819–20

*(Below)*

Plate XVIII

Case 30: The Kelso archive, c.1750–1850





Plate XIX Case 11: *Edith, Ina and Alice on a sofa*



Plate XX Case 18: *Edith Liddell lying on a sofa*



Plate XXI Case 15: *Alice Liddell as 'The Beggar Maid'*



Plate XXII Case 13: *Alice, Lorina, Harry and Edith Liddell*



Plate XXIII Case 21: *Photographic triptych of the three sisters*

Plates XIX–XXVII

A selection from cases 11–24: Albumen prints by Charles Lutwidge Dodgson (1832–98) ('Lewis Carroll')



Plate XXIV Case 22: *Ina Liddell holding a doll, seated*



Plate XXV Case 20: *Lorina Liddell, aged twenty*



Plate XXVI Case 17: *Alice Liddell seated beside a potted fern*



Plate XXVII Case 19: *Alice Liddell, aged eighteen*

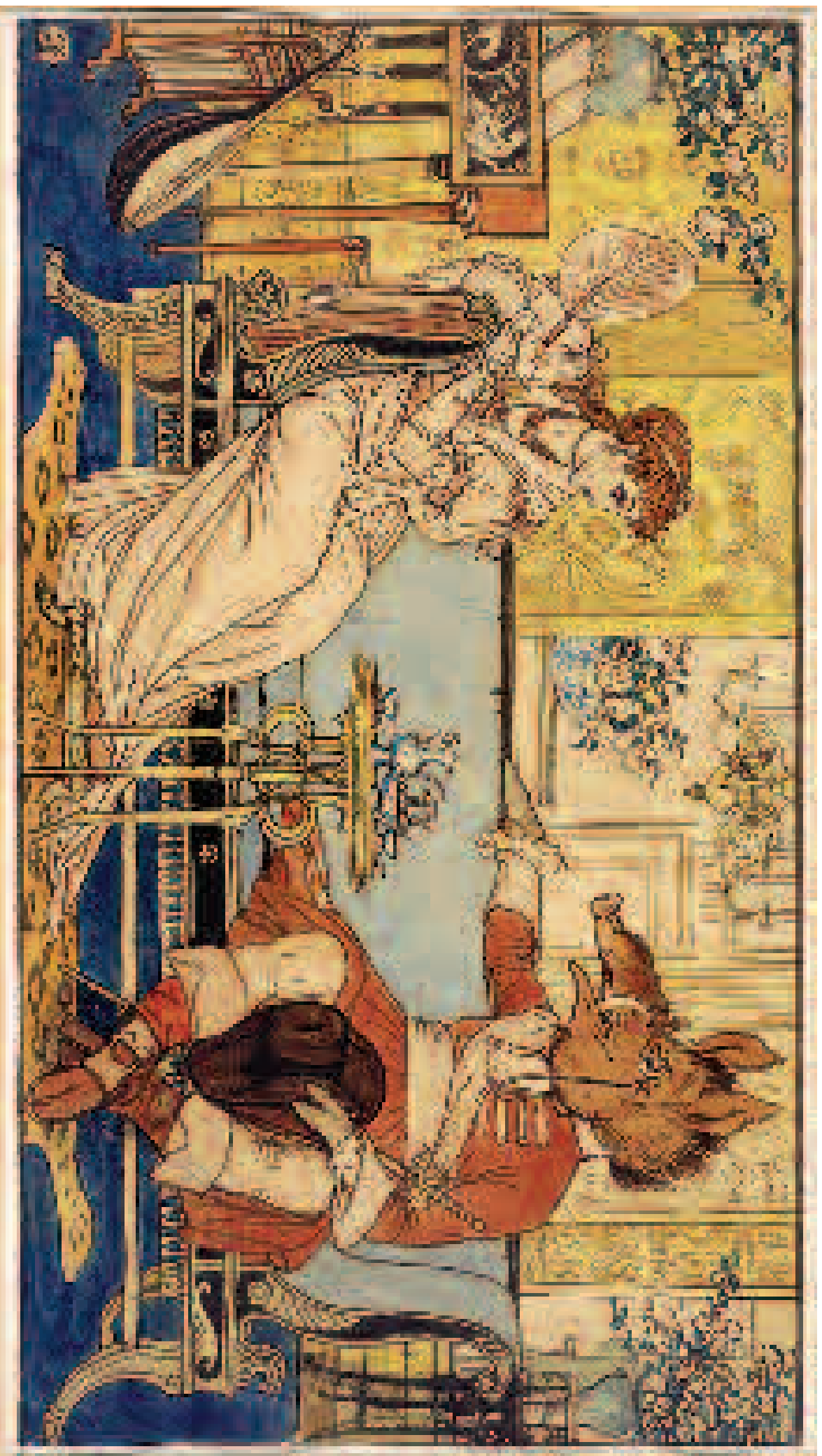


Plate XXVIII

Case 31: *Beauty and the Beast*, illustration for a Toy Book, 1874, from the archive of Walter Crane (1845–1915) (Courtesy of The Whitworth Art Gallery, The University of Manchester)